

OWNER:
Revolutionary Clinics, LLC

ARCHITECT:
Elton + Hampton Architects
103 Terrace Street
Roxbury, MA 02120
(617) 708-1071

PLUMBING, HVAC & ELECTRICAL ENGINEER:
CSI Engineering
125 Aviation Avenue
Suite 4
Portsmouth, NH 03801
(603) 319-8244

SECURITY:
Lan-Tel Communications, Inc.
1400 Providence Highway
Suite 3100
Norwood, MA 02062
(857) 939-8181

DRAWING LIST

Cover Page

A-000.00 Site Plan
A-001.00 Proposed Floor Plan
A-001.01 Reflected Ceiling Plan
A-001.02 Roof Plan
A-002.00 Building Elevations
A-003.00 Schedules, Wall Types & Interior Signage
A-003.01 Interior Elevations
A-004.00 Life Safety Plan
A-005.00 Existing Conditions Map
A-005.01 Site Context Plans
A-005.02 Existing Conditions Photographs
A-005.03 Existing Conditions Photographs
A-005.04 Proposed Interior Rendering
A-005.05 Illustrative Sections

P1.0 Plumbing Legend
P2.0 Plumbing Basement Plan
P2.1 Plumbing Floor Plan
P2.2 Plumbing Basement Plan
P3.0 Plumbing Details
P4.0 Plumbing Specifications

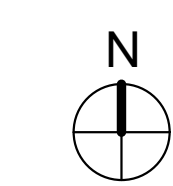
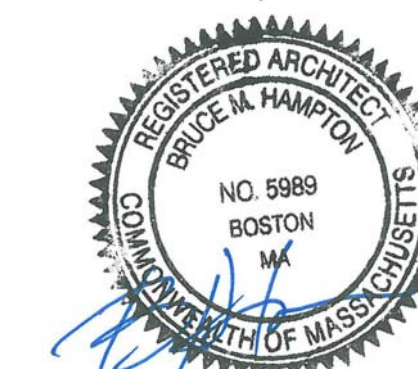
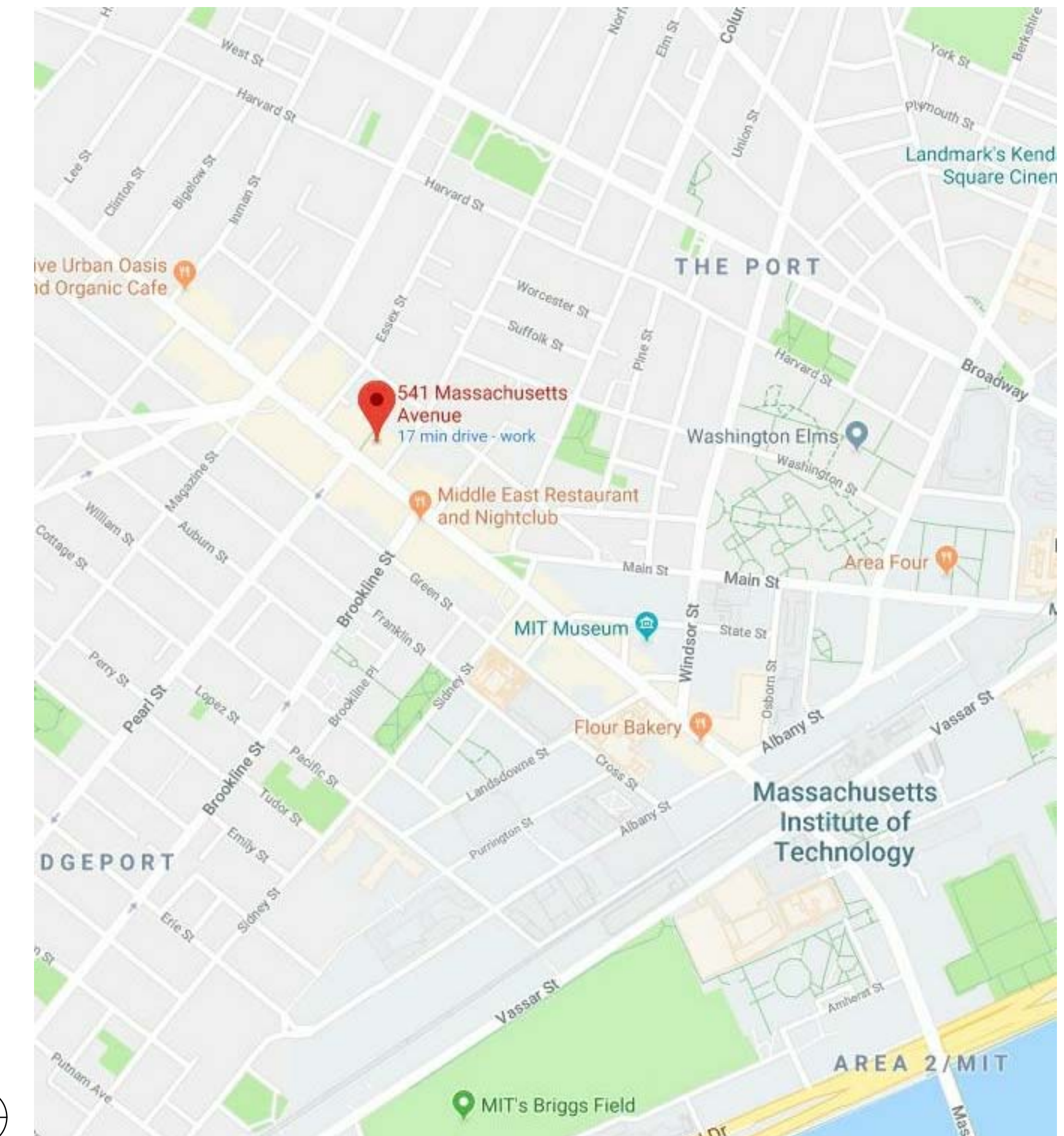
H1.0 HVAC Legend
H2.0 HVAC Floor Plan
H2.1 HVAC Roof Plan
H3.0 HVAC Details
H4.0 HVAC Schedules & Controls
H5.0 HVAC Specifications

E1.0 Legends, Details, Notes & Abbreviations
E2.0 Lighting Plan - First Floor
E3.0 Power & Data Plan - First Floor
E3.1 Fire Alarm Plan - First Floor
E4.0 Panel Board Schedules
E4.1 Equipment Schedules
E5.0 Specifications

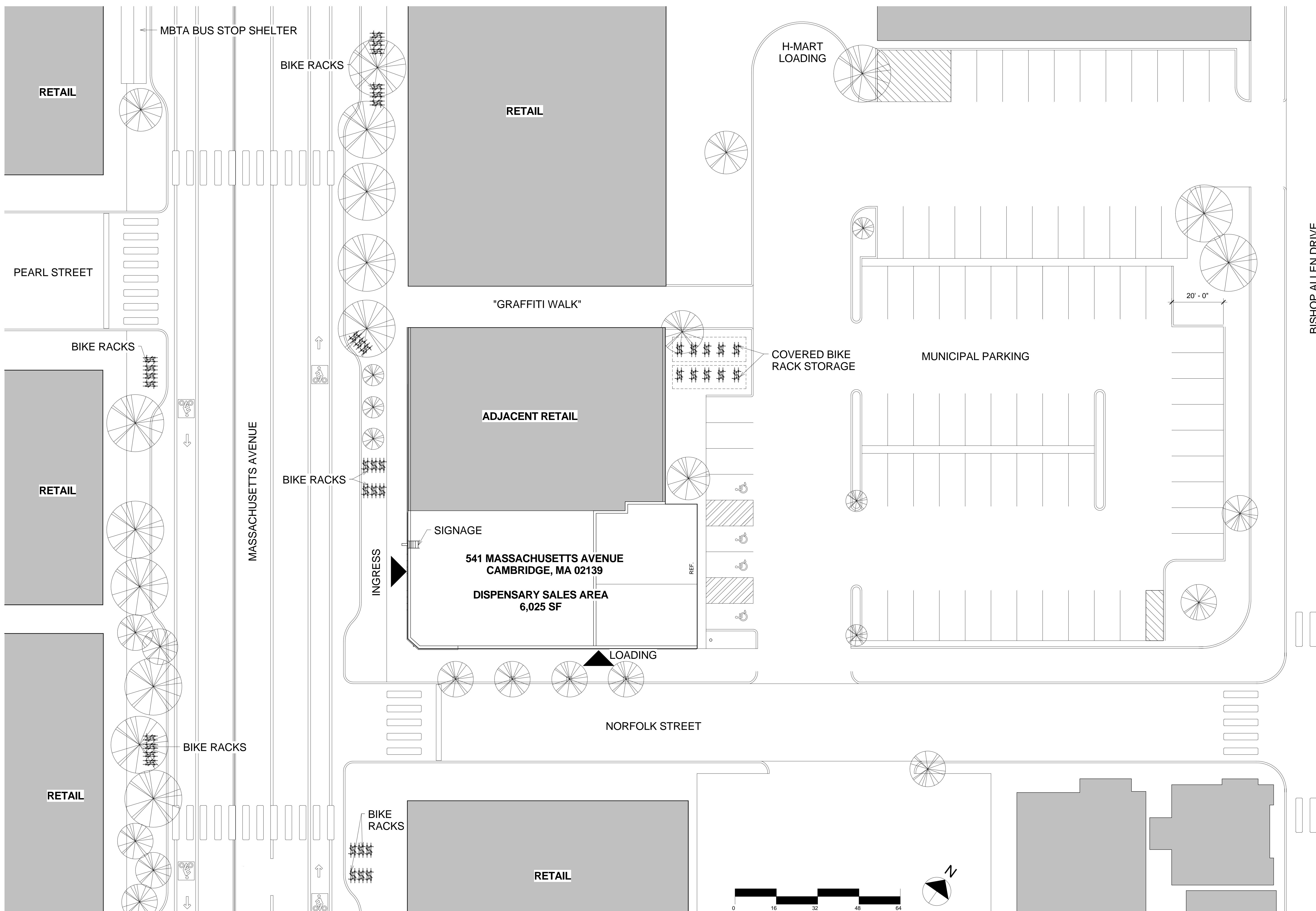
SEC-01 Proposed Security Plan

BUILDING CODE SUMMARY			
USE/ OCCUPANCY		USE GROUP M _MERCANTILE	
BUILDING CODE		780 CMR	MASSACHUSETTS STATE BUILDING CODE (MSBC) - 9TH EDITION MSBC IS AMENDED VERSION OF 2015 IBC
OTHER APPLICABLE CODES		521 CMR NFPA-1 NFPA-101 NFPA-70 NFPA-72 248 CMR IMC 2015 IECC 2015 780 CMR	AMERICANS WITH DISABILITIES ACT (ADA) ACCESSIBILITY GUIDELINES, 2010 EDITION MASSACHUSETTS ARCHITECTURAL ACCESS BOARD (MAAB) FIRE CODE, 2014 EDITION OF NEC LIFE SAFETY CODE NATIONAL ELECTRICAL CODE, 2017 EDITION FIRE ALARM COMMONWEALTH OF MASSACHUSETTS FUEL GAS AND PLUMBING CODE INTERNATIONAL MECHANICAL CODE INTERNATIONAL ENERGY CONSERVATION CODE MA STRETCH CODE AMENDMENT: APPENDIX 115AA
CONSTRUCTION TYPE/ GENERAL BUILDING LIMITATIONS		TYPE III-B	
CONSTRUCTION TYPE		TYPE III-B	
ITEM	ALLOWED	PROVIDED	COMMENTS
BUILDING HEIGHT	55'	15'-9"	IBC 2015: TABLE 504.3
BUILDING AREA (PER STORY)	12,500 SF	6025 SF	IBC 2015: TABLE 506.2
FIRE RESISTANCE RATINGS OF STRUCTURAL ELEMENTS			
ITEM	REQUIRED	PROVIDED	COMMENTS
PRIMARY STRUCTURAL FRAME	0 HR	0 HR	IBC 2015: TABLE 601
LOADBEARING WALL (EXTERIOR)	2 HR	2 HR	IBC 2015: TABLE 601
LOADBEARING WALL (INTERIOR)	0 HR	1 HR	IBC 2015: TABLE 601
NON-LOADBEARING WALL	0 HR	1 HR	IBC 2015: TABLE 601
FLOOR CONSTRUCTION	0 HR	1 HR	IBC 2015: TABLE 601
ROOF CONSTRUCTION	0 HR	0 HR	IBC 2015: TABLE 601
MEANS OF EGRESS			
ITEM	REQUIRED	PROVIDED	COMMENTS
MAXIMUM TRAVEL DISTANCE, GROUP M	200'	100'	IBC 2015: SECTION 1017.2
DEAD END CORRIDOR	20' MAX	None	IBC 2015: SECTION 1020.4
EXIT ENCLOSURE RATING	1 HR	1 HR	IBC 2015: SECTION 1020.1
CORRIDOR RATING	0 HR	1 HR	IBC 2015: TABLE 1020.1
AREA	GROSS SF	SF/ OC.	REQUIRED OCCUPANT LOAD
MERCANTILE	4,547 SF	60	92
BUSINESS	1582 SF	100	76
			16
			EGRESS CAPACITY PROVIDED
			1800 (2 - 36" HORIZONTAL EXITS)
			COMMENTS
			IBC 2015: SECTION 1005

REVOLUTIONARY CLINICS RMD
541 Massachusetts Avenue, Cambridge, MA 02139



July 25th, 2018



ELTON HAMPTON ARCHITECTS
 103 Terrace Street
 Boston, MA 02120
 617-708-1071

OWNER:
 Revolutionary Growers, LLC
 1 Oak Hill Road
 Fitchburg, MA 01420

No.	Description	Date



PROJECT
 541 Mass Ave
 Cambridge, MA 02139
 Site Plan

Date 07.25.18
 Project number CAS
 Drawn by L.P. WORTH
 Checked by B. HAMPTON

A-000.00

1 SITE PLAN
 1/16" = 1'-0"

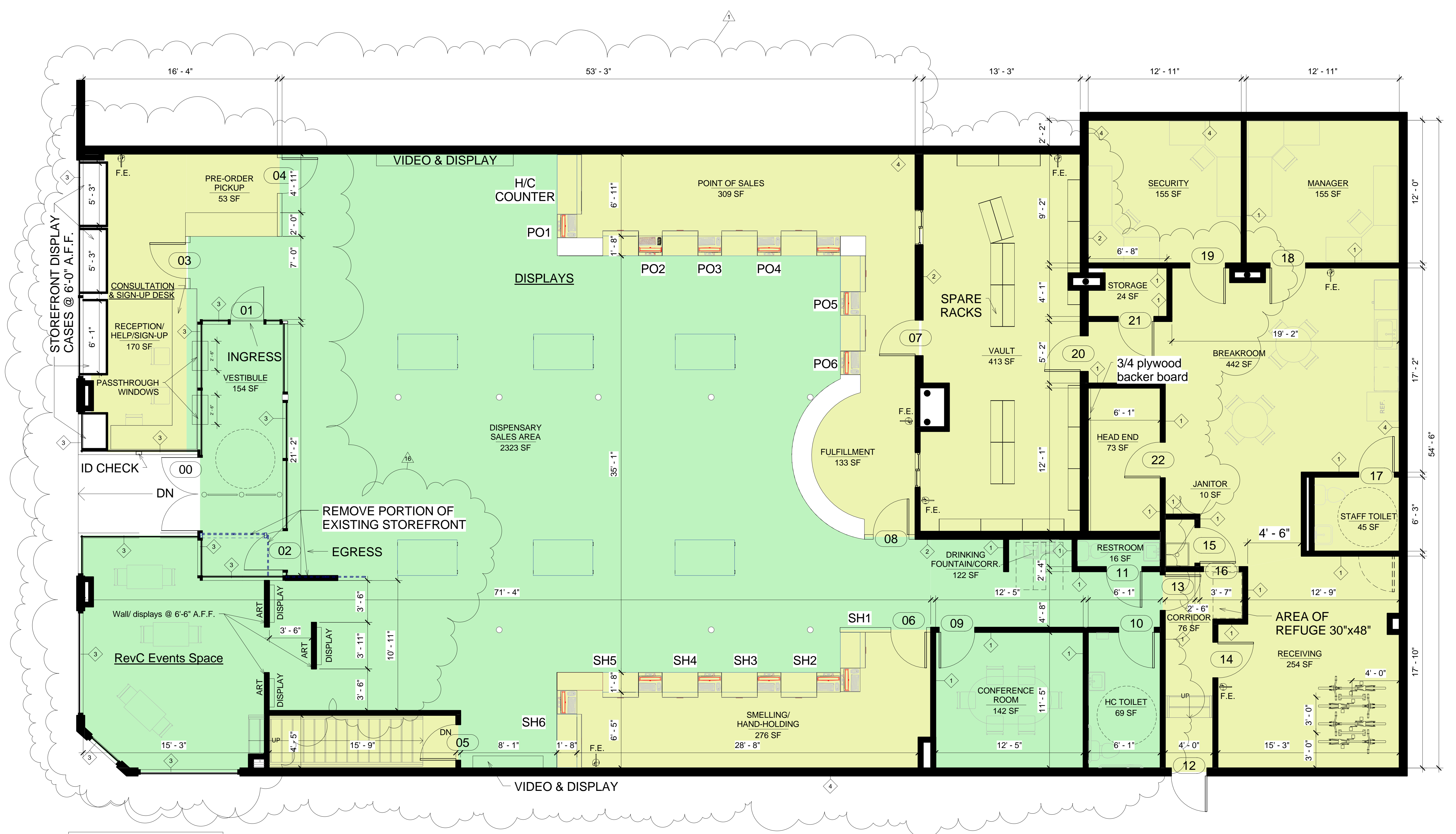
No.	Description	Date
1	Revised Floor Plan	06.06.18
16	Art gallery and storefront display cases	07.20.18



PROJECT
541 Mass Ave
 Cambridge, MA 02139
 Proposed Floor Plan

Date	07.25.18
Project number	CAS
Drawn by	L.P. WORTH
Checked by	B. HAMPTON

A-001.00
 1 of



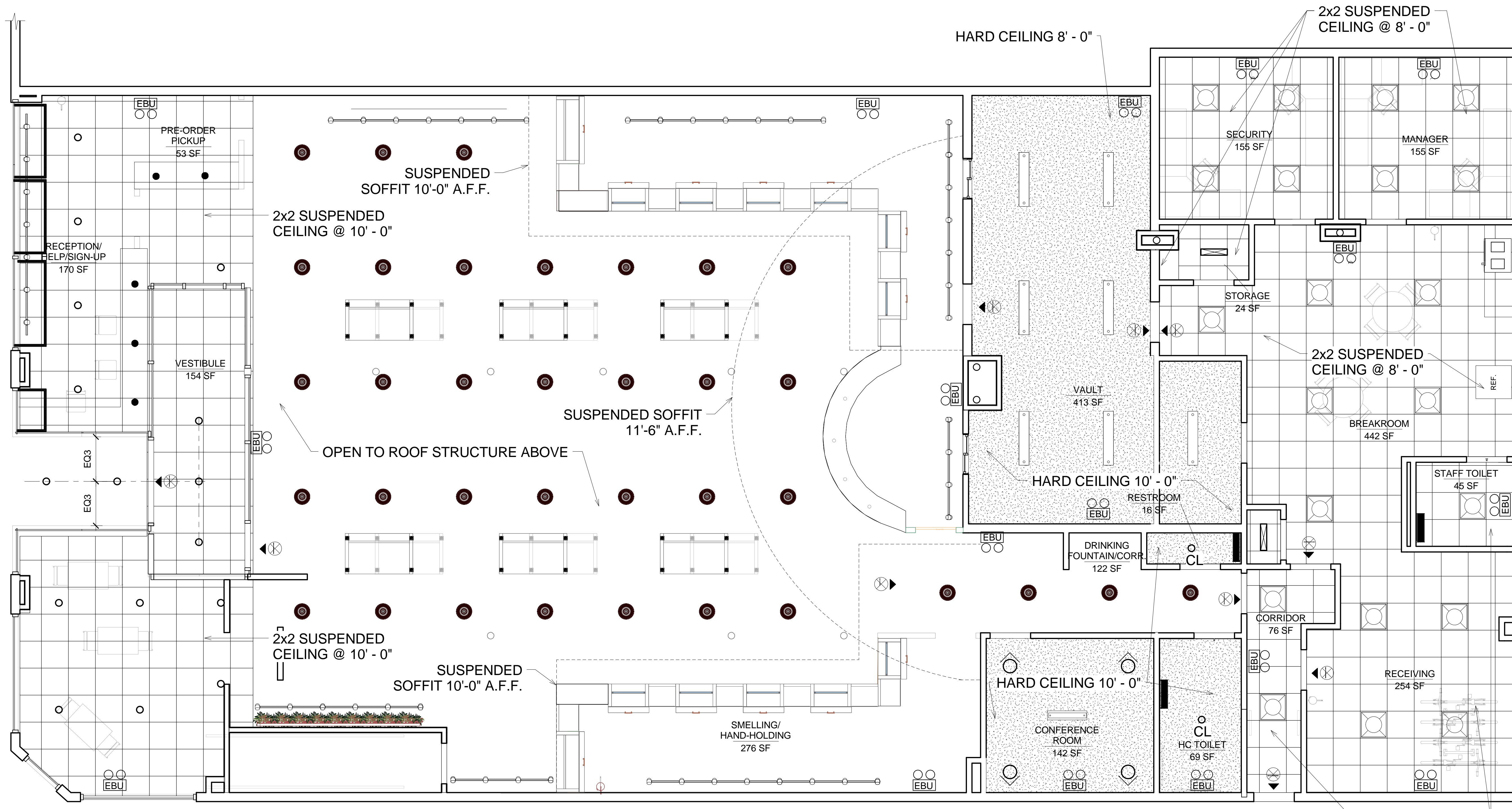
Floor Plan Legend

- Limited Access
- Restricted Area



1 PROPOSED FLOOR PLAN
 1/4" = 1'-0"

No.	Description	Date



Light Fixture Legend

	General barn light pendant fixture		Recessed wall washer fixture
	2'x2' Parabolic troffer light		4' Work light
	Wall sconce uplight		2' Work light
	6" Recessed can light		EBU
	Directional Exit Signs		Accent pendant light fixture
	Track lights		Linear pendant light fixture
			Rectangular pendant lamp

Ceiling Finish Legend

	2x2 Suspended Ceiling Tiles Style I
	2x2 Suspended Ceiling Tiles Style II
	GWB Hard Ceiling

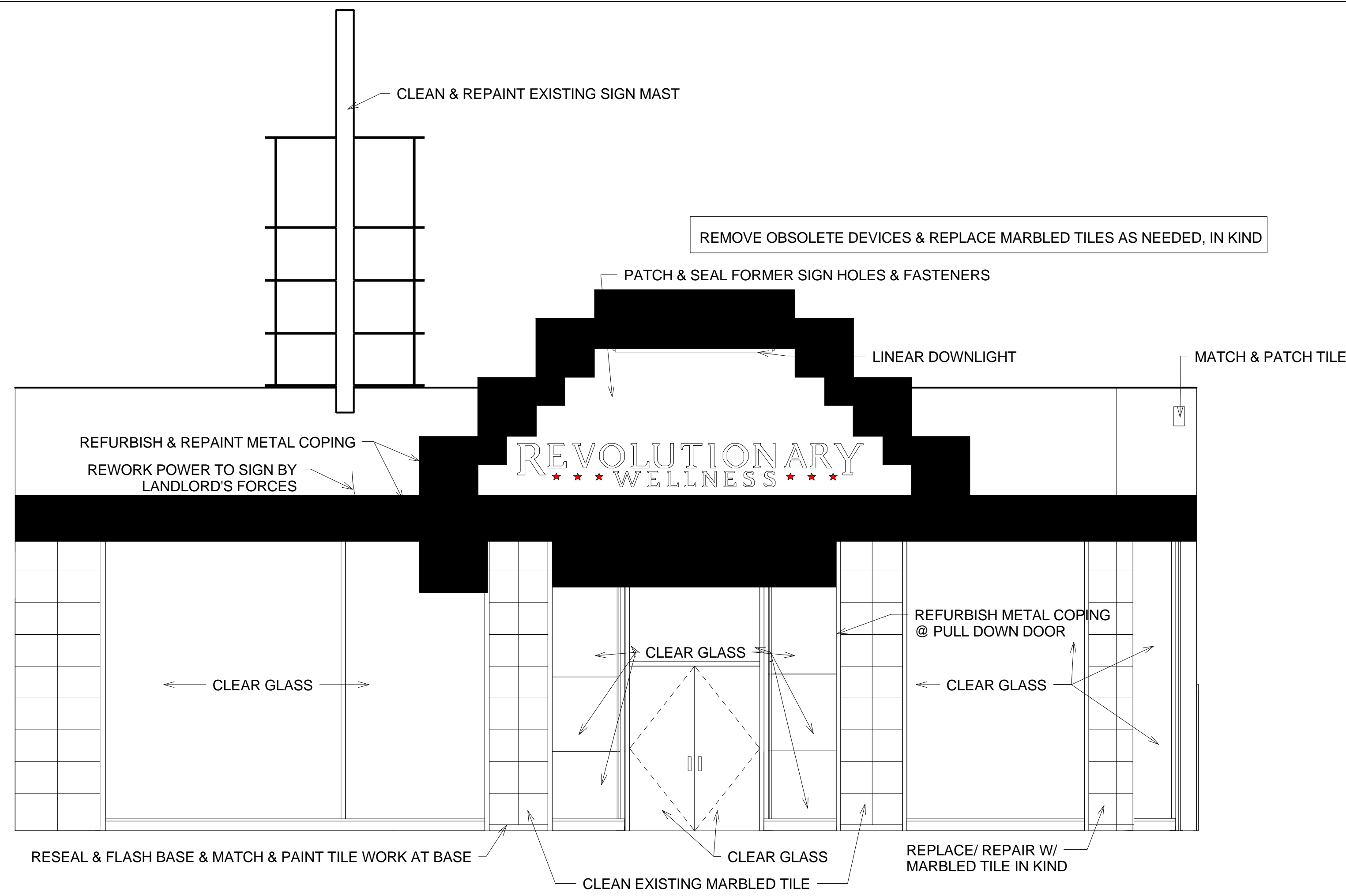
1 PROPOSED REFLECTED CEILING PLAN
 1/4" = 1'-0"



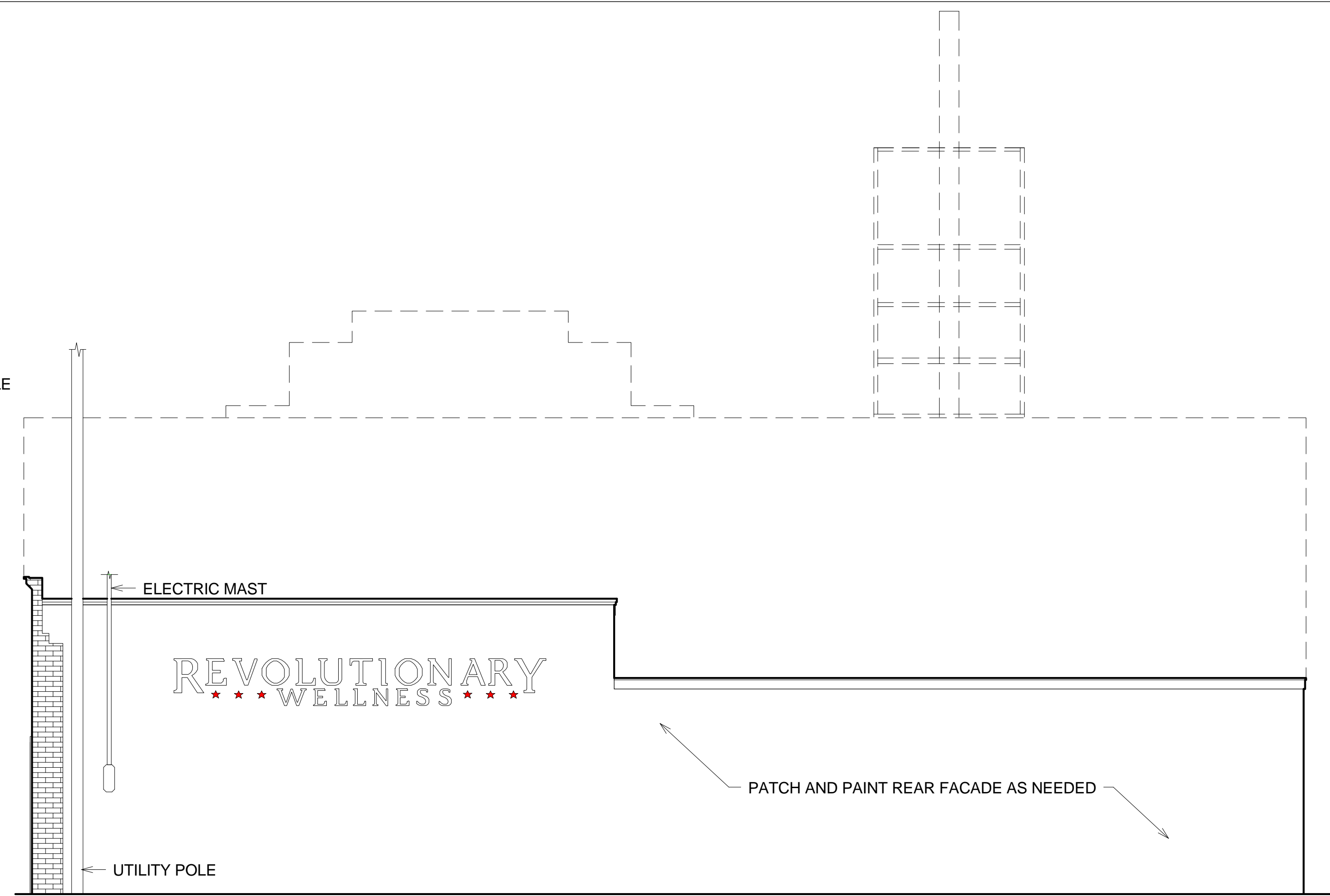
PROJECT
 541 Mass Ave
 Cambridge, MA 02139
 Reflected Ceiling Plan

Date	07.25.18
Project number	CAS
Drawn by	Author
Checked by	Checker

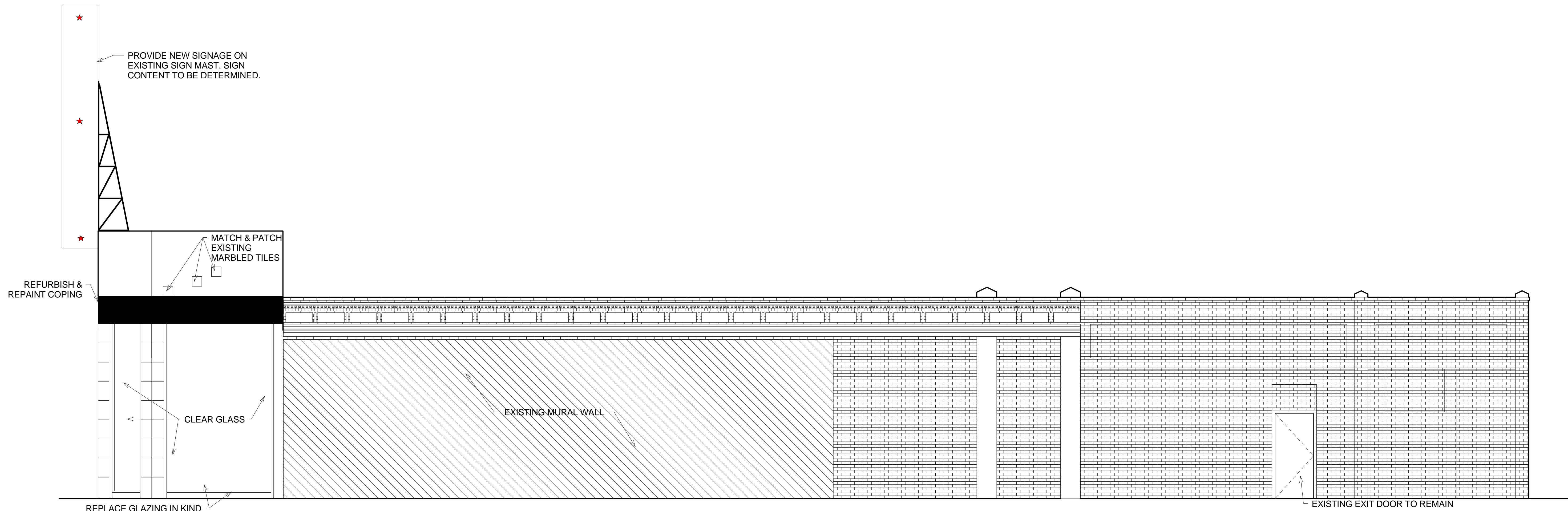
A-001.01



1 PROPOSED FRONT ELEVATION
 1/4" = 1' - 0"



2 PROPOSED REAR ELEVATION
 1/4" = 1' - 0"



3 PROPOSED SIDE ELEVATION
 1/4" = 1' - 0"

No.	Description	Date



PROJECT
 541 Mass Ave
 Cambridge, MA 02139

Building Elevations

Date	07.25.18
Project number	CAS
Drawn by	Author
Checked by	Checker

A-002.00

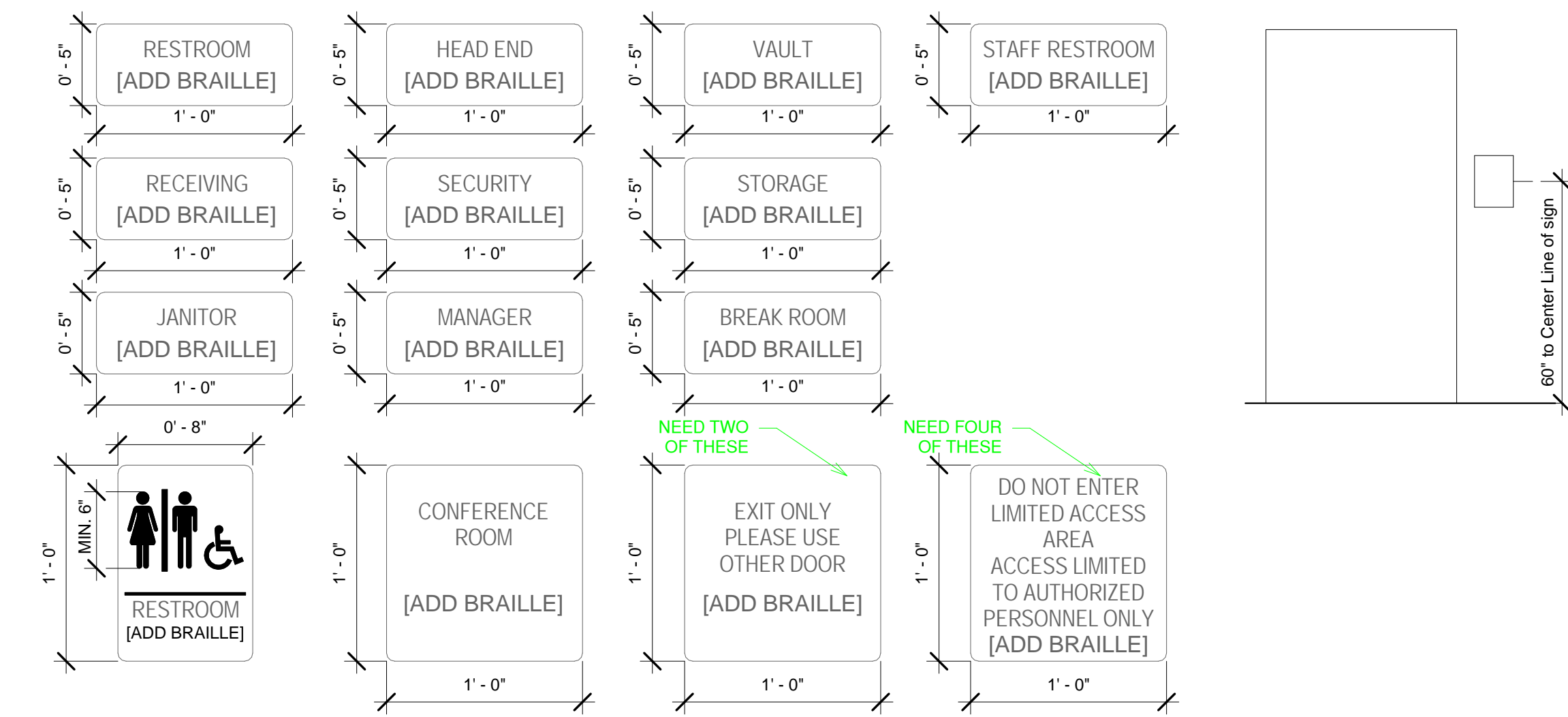
OWNER:

Revolutionary Growers, LLC
1 Oak Hill Road
Fitchburg, MA 01420

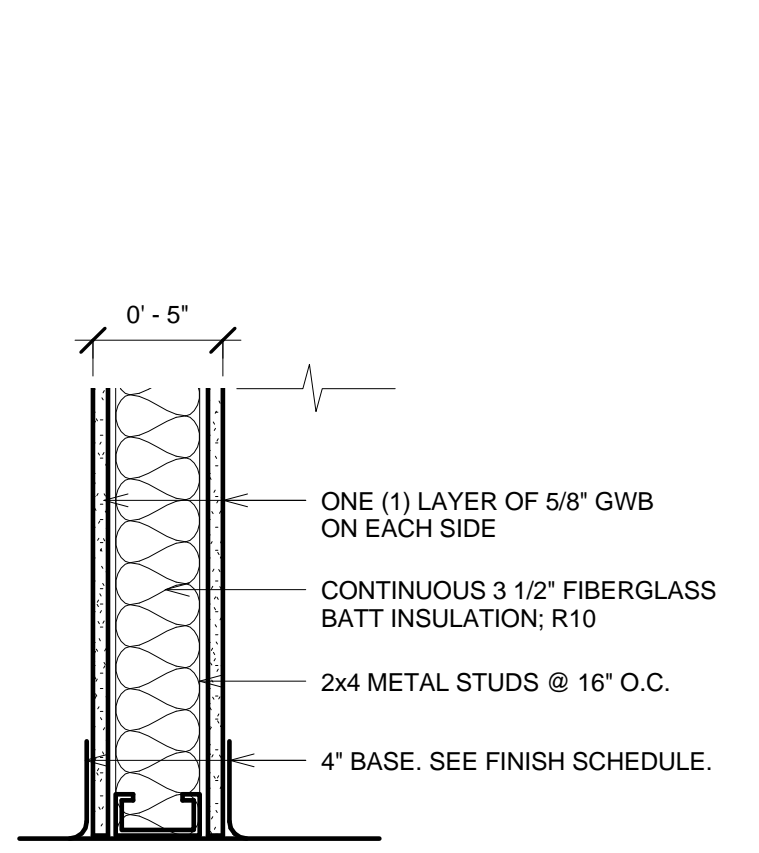
No.	Description	Date

Door Schedule																
Mark	Location	Construction Type	Type	Thickness	Fire Rating	Material	Door Type	Frame Type	Finish	Hinges	Category	ANSI	Kick Plates	Panic Bar	Closer	Comments
00	Dispensary Exit	Swing	Curtain Wall Dbl Glass	0' - 2"		Full Glass	Storefront	Aluminum	Anodized	3	Storeroom	F86		Yes	Yes	Secure, alarmed, bronze finish, transom, weather stripping
01	Dispensary Entrance Door	Swing	Curtain Wall Sgl Glass	0' - 2"		Full Glass	Storefront	Aluminum	Anodized	3	Storeroom	F86			Yes	Secure, alarmed, bronze finish, transom, weather stripping
02	Exit Vestibule Door	Swing	Curtain Wall Sgl Glass	0' - 2"		Full Glass	Storefront	Aluminum	Anodized	3	Storeroom	F86		Yes	Yes	Secure, alarmed, bronze finish, transom, weather stripping
03	Reception	Swing	36" x 48" Half Door	0' - 1 3/4"		Metal	Flush	Metal	Painted	2	Storeroom	F86				FOB access, secure, alarmed, spring hinges
04	Pre-Order	Swing	36" x 48" Half Door	0' - 1 3/4"		Metal	Flush	Metal	Painted	3	Storeroom	F86				FOB access, secure, alarmed, spring hinges
05	Basement Stair	Swing	36" x 80"	0' - 1 3/4"		Metal	Flush	Metal	Painted	3	Storeroom	F86			Yes	FOB access, secure, alarmed
06	Clone/ Seed	Swing	36" x 48" Half Door	0' - 1 3/4"		Metal	Flush	Metal	Painted	2	Storeroom	F86				FOB access, secure, alarmed, spring hinges
07	Vault	Swing	36" x 80"	0' - 1 3/4"		Metal	Flush	Metal	Painted	3	Storeroom	F86	Yes		Yes	FOB access, secure, alarmed
08	Fulfillment	Swing	36" x 48" Half Door	0' - 1 3/4"		Metal	Flush	Metal	Painted	3	Storeroom	F86				FOB access, secure, alarmed, spring hinges
09	Conference Room	Swing	36" x 80"	0' - 1 3/4"		Metal	Flush	Metal	Painted	3	Passage	F75				
10	HC Toilet	Swing	36" x 80"	0' - 1 3/4"		Metal	Flush	Metal	Painted	3	Privacy	F76			Yes	
11	Restroom	Swing	36" x 80"	0' - 1 3/4"		Metal	Flush	Metal	Painted	3	Privacy	F76			Yes	
12	Egress Exit	Swing	36" x 80"	0' - 1 3/4"		Metal	Flush	Metal	Painted	3	Storeroom	F86		Yes	Yes	FOB access, secure, alarmed
13	Rear Corridor	Swing	36" x 80"	0' - 1 3/4"		Metal	Flush	Metal	Painted	3	Storeroom	F86		Yes	Yes	FOB access, secure, alarmed
14	Receiving	Swing	36" x 80"	0' - 1 3/4"		Metal	Flush	Metal	Painted	3	Storeroom	F86			Yes	FOB access, secure, alarmed
15	Janitor	Swing	36" x 80"	0' - 1 3/4"		Metal	Flush	Metal	Painted	3	Storeroom	F86		Yes	Yes	FOB access, secure, alarmed
16	Break Room	N/A	36" x 80"	N/A		N/A	N/A	N/A	N/A							Cased opening
17	Staff Toilet	Swing	36" x 80"	0' - 1 3/4"		Metal	Flush	Metal	Painted	3	Privacy	F76			Yes	
18	Manager	Swing	36" x 80"	0' - 1 3/4"		Metal	Flush	Metal	Painted	3	Storeroom	F86			Yes	FOB access, secure, alarmed
19	Security	Swing	36" x 80"	0' - 1 3/4"		Metal	Flush	Metal	Painted	3	Storeroom	F86			Yes	FOB access, secure, alarmed
20	Vault	Swing	36" x 80"	0' - 1 3/4"		Metal	Flush	Metal	Painted	3	Storeroom	F86			Yes	FOB access, secure, alarmed
21	Storage 2	Swing	36" x 80"	0' - 1 3/4"		Metal	Flush	Metal	Painted	3	Storeroom	F86				
22	Head End	Swing	36" x 80"	0' - 1 3/4"		Metal	Flush	Metal	Painted	3	Storeroom	F86	Yes		Yes	FOB access, secure, alarmed

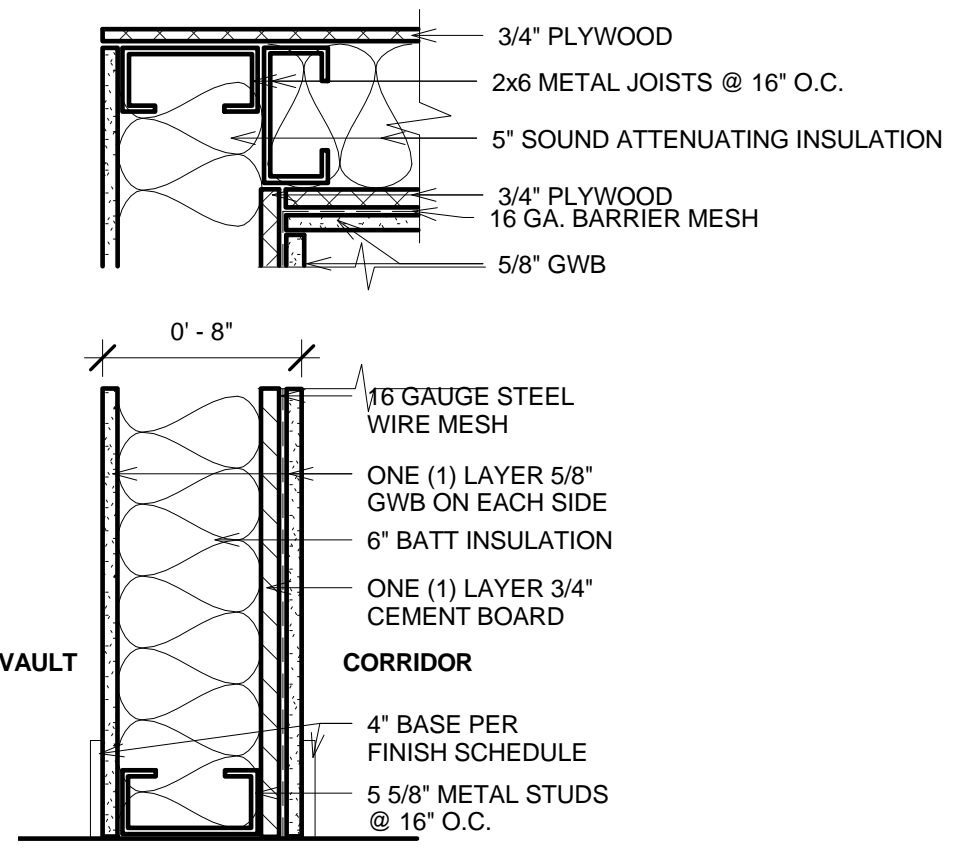
Room Finish Schedule							
Name	Floor Finish	Floor Base Finish	Wall Material	Wall Finish	Ceiling	Ceiling Finish	Comments
SECURITY	Resilient Tile	Rubber	GWB	Painted	ACT	White	
MANAGER	Resilient Tile	Rubber	GWB	Painted	ACT	White	
STAFF TOILET	Porcelain Tile	Tile	GWB	Painted	ACT	White	
VAULT	Resilient Tile	Rubber	GWB/ Cement Board	Painted	ACT	White	GWB + 3/4" Cement board and 16 GA steel mesh. See Wall Type 2
CONFERENCE ROOM	Ceramic Tile	Tile	GWB	Painted	ACT	White	
HC TOILET	Porcelain Tile	Tile	GWB	Painted	ACT	White	
RESTROOM	Porcelain Tile	Tile	GWB	Painted	ACT	White	
JANITOR	Resilient Tile	Rubber	GWB	Painted	ACT	White	
CORRIDOR	Resilient Tile	Rubber	GWB	Painted	ACT	White	
SMELLING/ HAND-HOLDING	Marathon flooring	Tile	GWB	Painted	ACT	White	
STORAGE	Resilient Tile	Rubber	GWB	Painted	ACT	White	
BREAKROOM	Resilient Tile	Rubber	GWB	Painted	ACT	White	
RECEIVING	Resilient Tile	Rubber	GWB	Painted	ACT	White	
DRINKING FOUNTAIN/CORR.	Ceramic Tile	Tile	GWB	Painted	ACT	White	
VESTIBULE	Ceramic Tile	Tile	GWB	Painted	ACT	White	Walk off mat, privacy film
PRE-ORDER PICKUP	Marathon flooring	Tile	GWB	Painted	ACT	White	
RECEPTION/ HELP/SIGN-UP	Marathon flooring	Tile	Storefront	Privacy film	ACT	White	
FULFILLMENT	Marathon flooring	Tile	GWB	Painted	Suspended	White	
POINT OF SALES	Marathon flooring	Tile	GWB	Painted	Suspended	White	
HEAD END	Resilient Tile	Tile	GWB	Painted	GWB	Painted	
DISPENSARY SALES AREA	Ceramic Tile	Tile	GWB	Painted	Open	Black	Matte finish paint, exposed duct work
BASEMENT STAIR	Existing to remain	ETR	ETR	ETR	ETR	ETR	



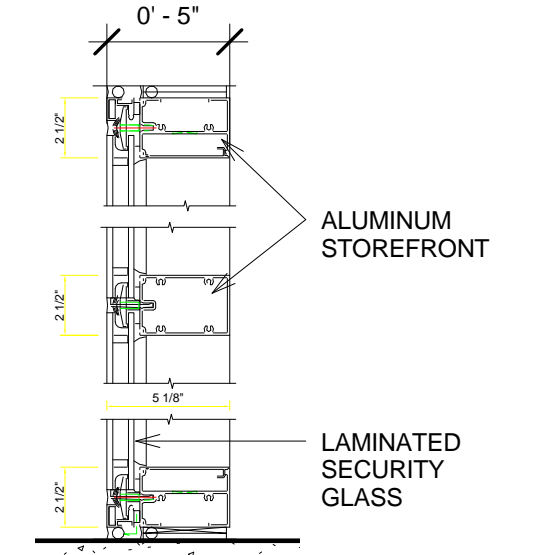
6 INTERIOR SIGNAGE
1 1/2" = 1'-0"



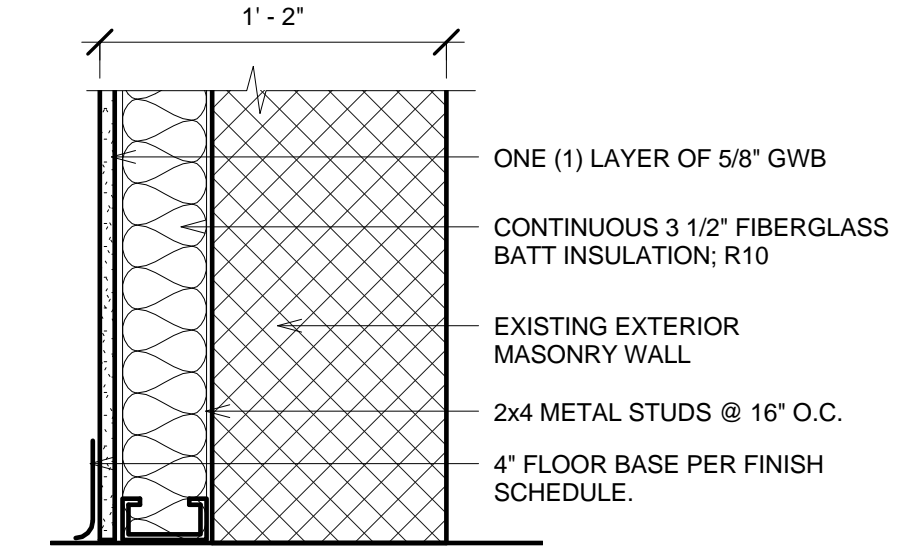
1 WALL TYPE 1
1 1/2" = 1'-0"



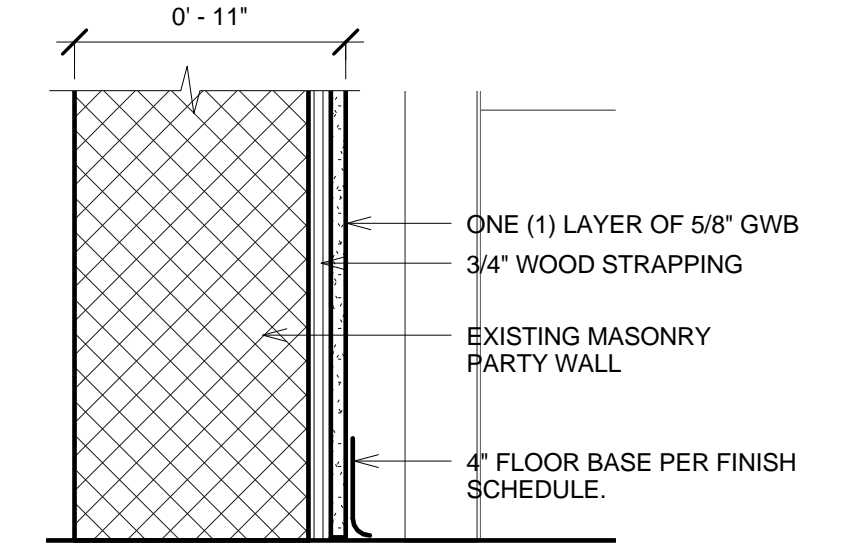
2 WALL TYPE 2
1 1/2" = 1'-0"



3 WALL TYPE 3
1 1/2" = 1'-0"



4 WALL TYPE 4
1 1/2" = 1'-0"



5 WALL TYPE 5
1 1/2" = 1'-0"

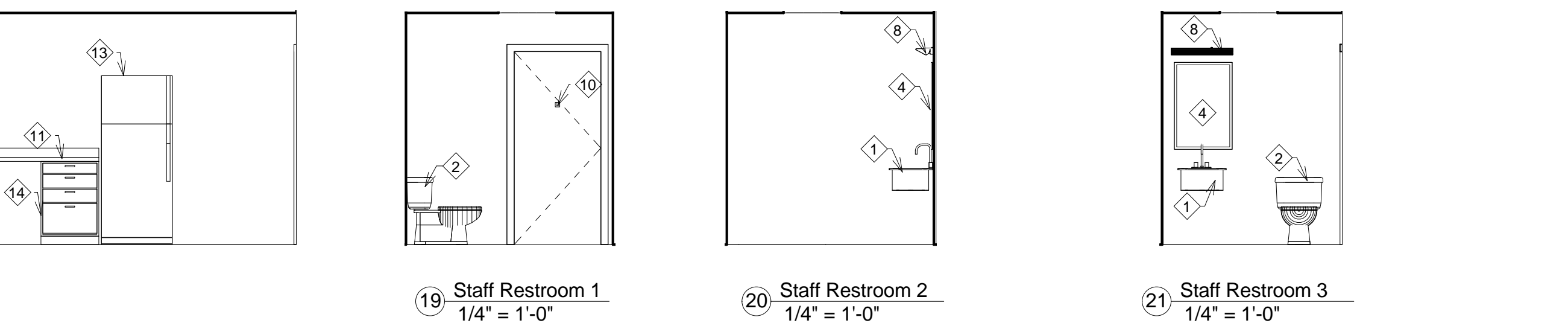
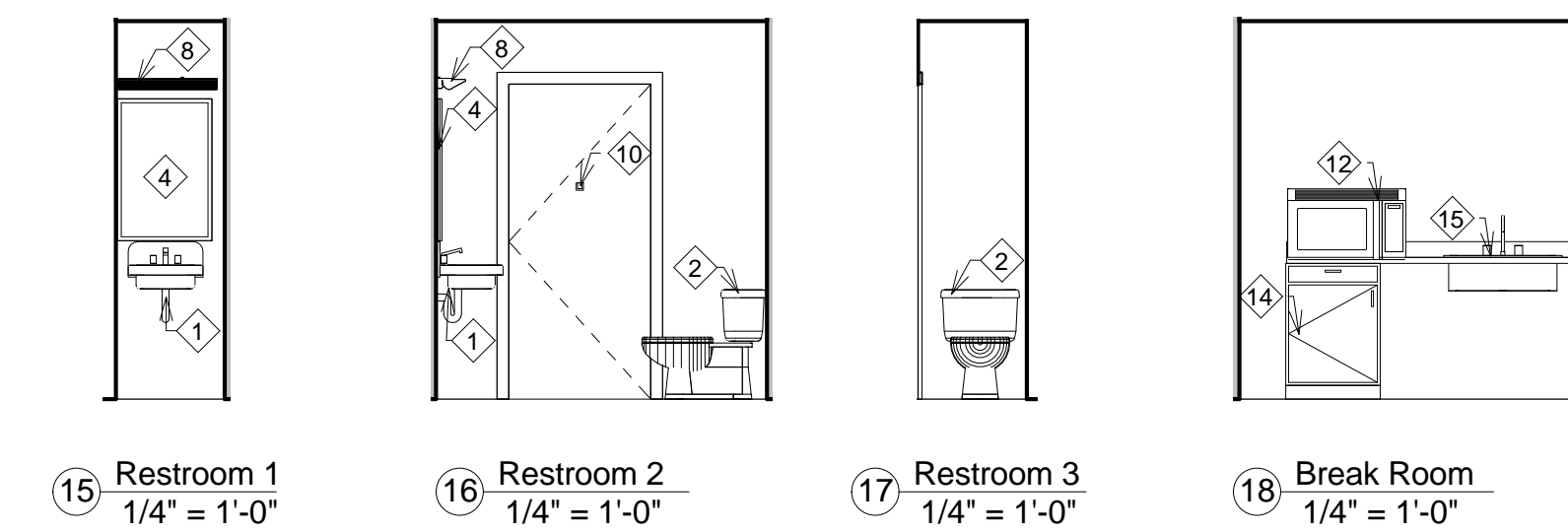
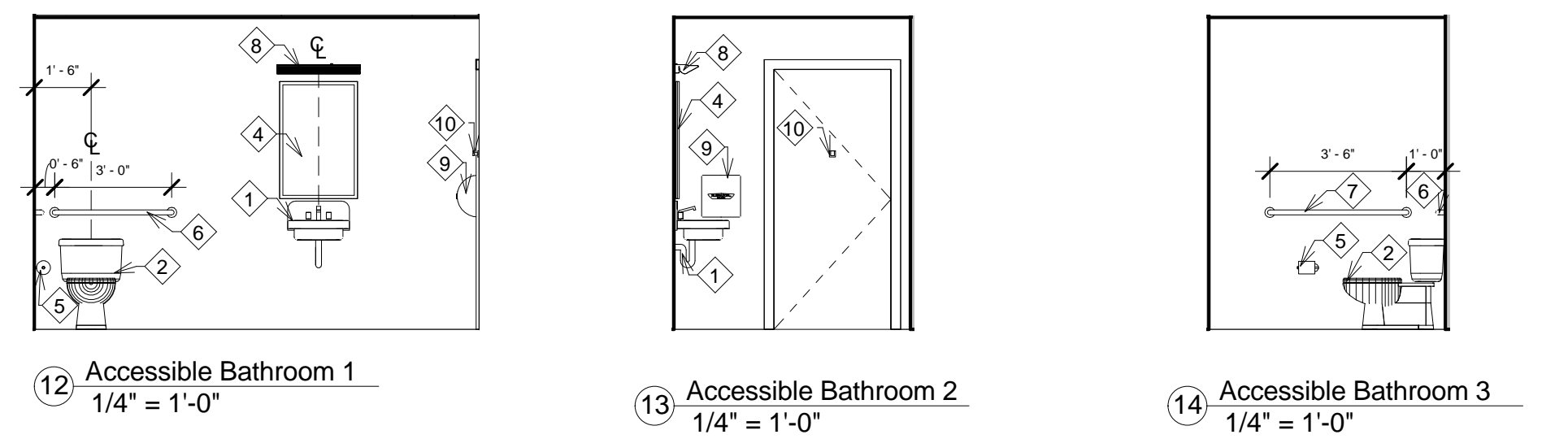
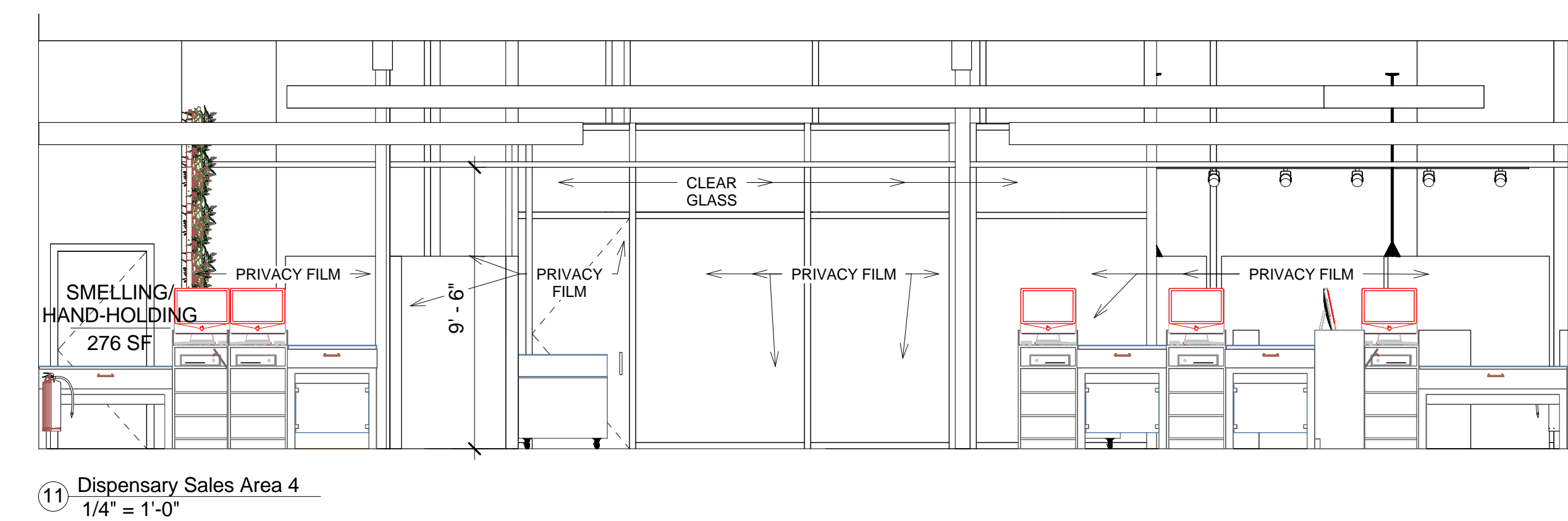
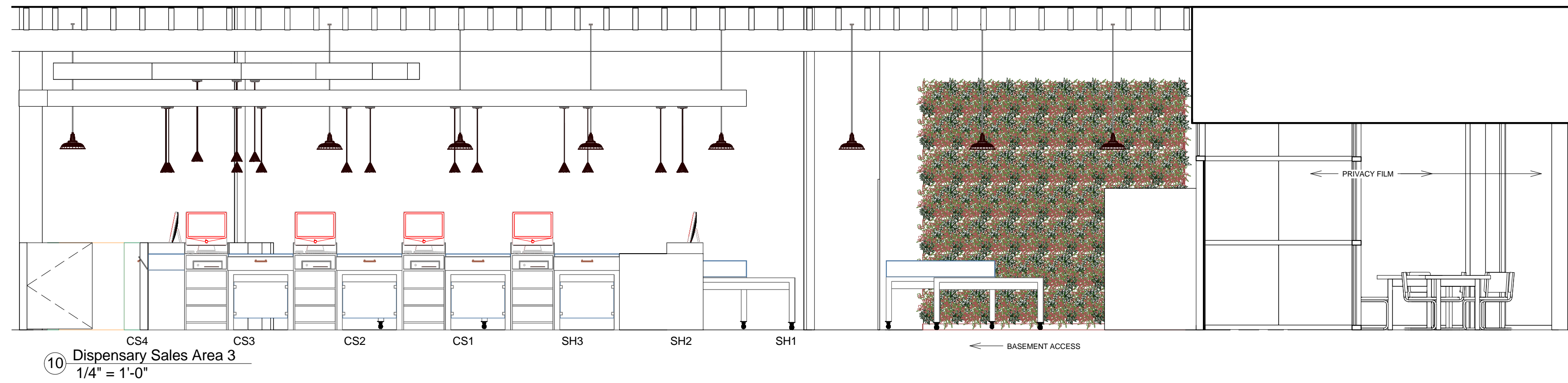
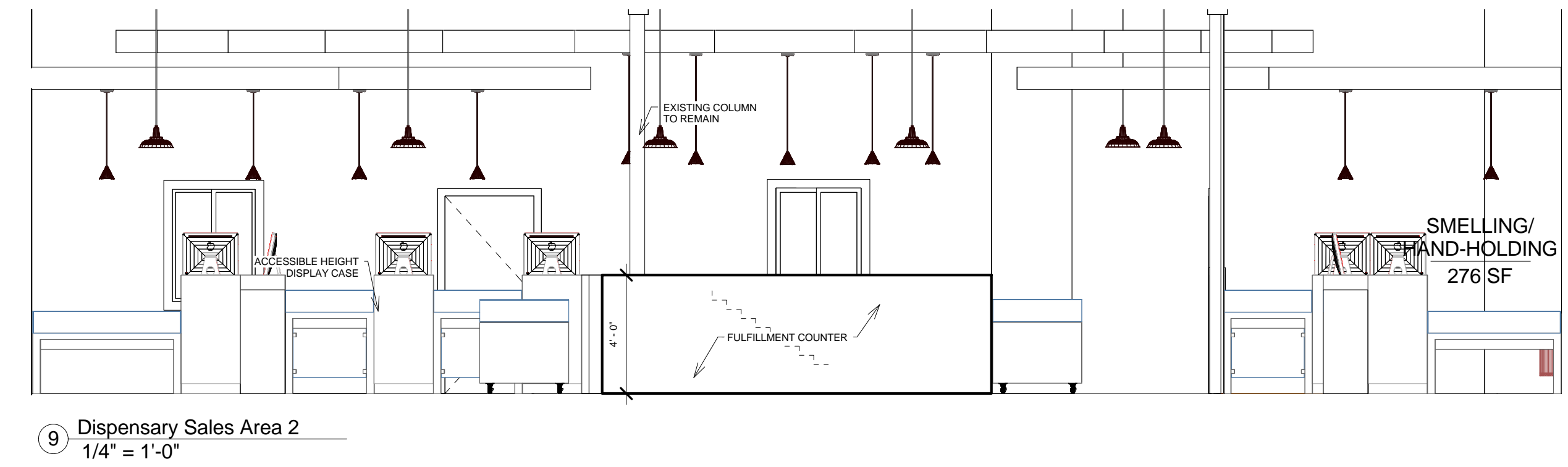
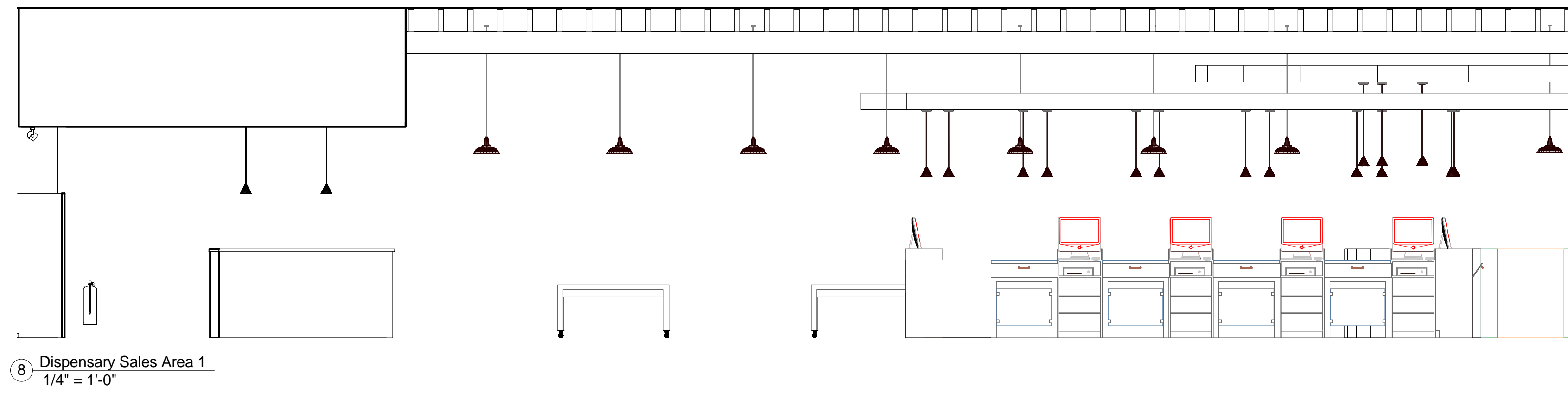
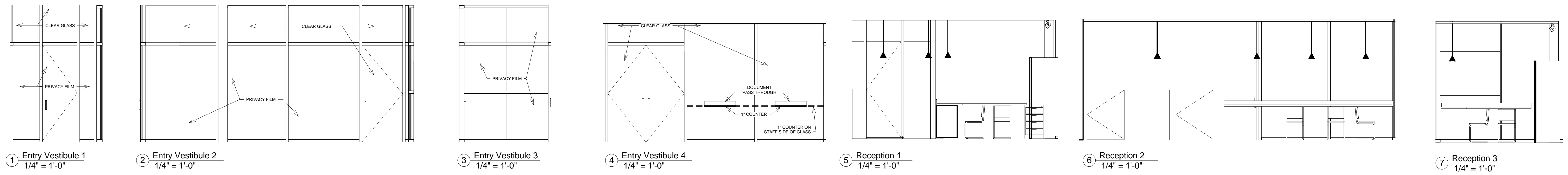


PROJECT
541 Mass Ave
Cambridge, MA 02139
Schedules, Wall Types, Interior Signage

Date 07.25.18
Project number CAS
Drawn by Author
Checked by Checker

A-003.00

OWNER:
Revolutionary Growers, LLC
1 Oak Hill Road
Fitchburg, MA 01420



- ACCESSIBLE BATHROOM INTERIOR ELEVATIONS NOTES
- ① Wall hung MAAB approved, lavatory sink with lever faucet @ 34" A.F.F. Kohler Greenwich K-2031 or approved equal.
 - ② 1.28 gallon "water saving", comfort height water closet. See specification.
 - ③ 4" Wall Base. See Finish Schedule.
 - ④ 24x36 ADA wall mount mirror. Bottom of mirror mounted 40" A.F.F.
 - ⑤ Surface mounted chrome toilet paper dispenser.
 - ⑥ 36" chrome grab bar mounted 3'-0" A.F.F.
 - ⑦ 42" chrome grab bar mounted 3'-0" A.F.F.
 - ⑧ Sconce light fixture mounted 6'-8" A.F.F.
 - ⑨ Wall mount ADA Xlerator hand dryer. See specifications.
 - ⑩ Chrome robe hook mounted 4'-6" A.F.F.
 - ⑪ 24" deep countertop. See spec.
 - ⑫ Microwave. See spec.
 - ⑬ Refrigerator. See spec.
 - ⑭ 24" wide base cabinets. See spec.
 - ⑮ 30" single bay sink. See spec.

No.	Description	Date



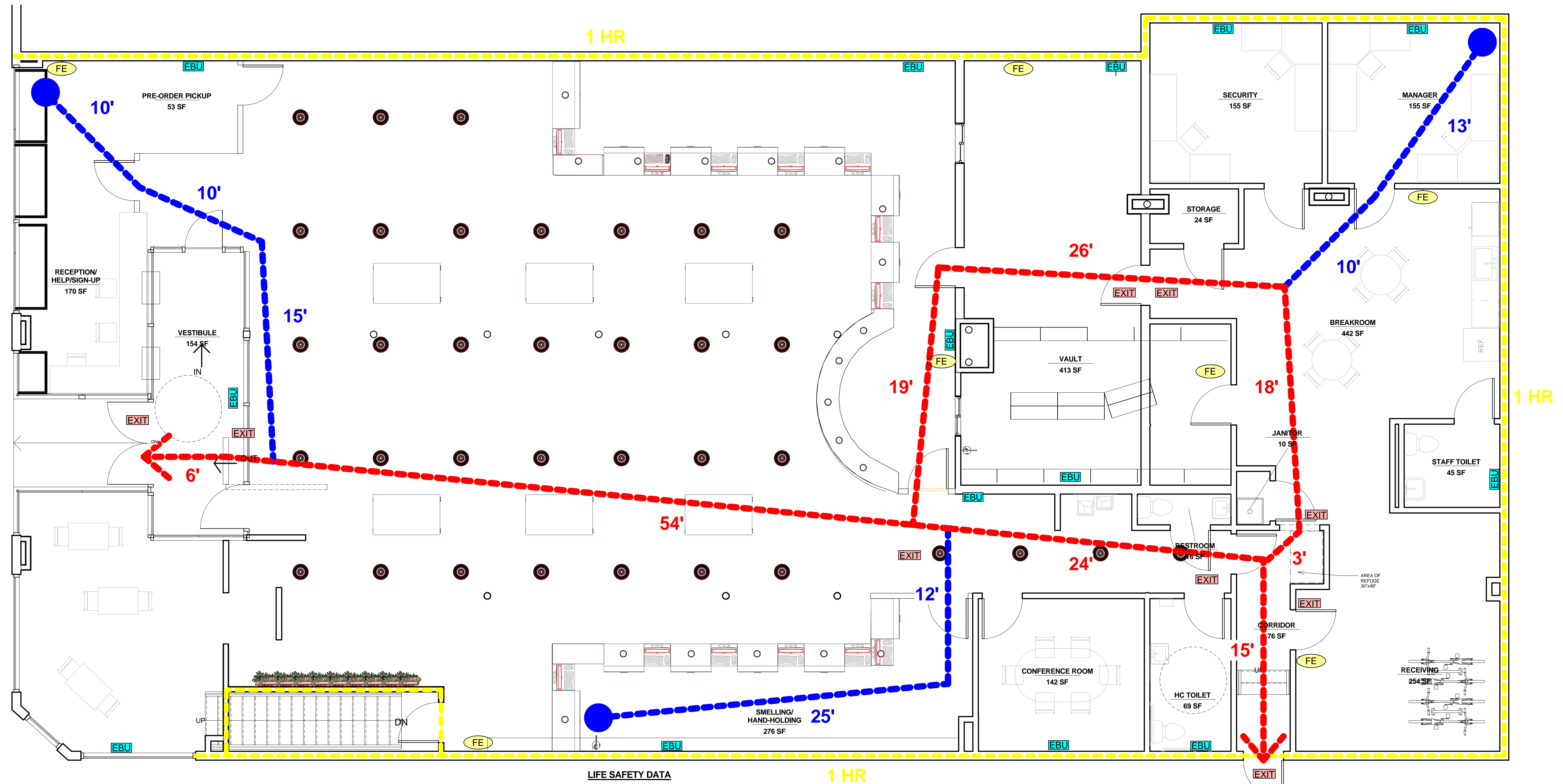
PROJECT
541 Mass Ave
Cambridge, MA 02139

Interior Elevations

Date 07.25.18
Project number CAS
Drawn by Author
Checked by Checker

A-003.01

OWNER:
 Revolutionary Growers, LLC
 1 Oak Hill Road
 Fitchburg, MA 01420

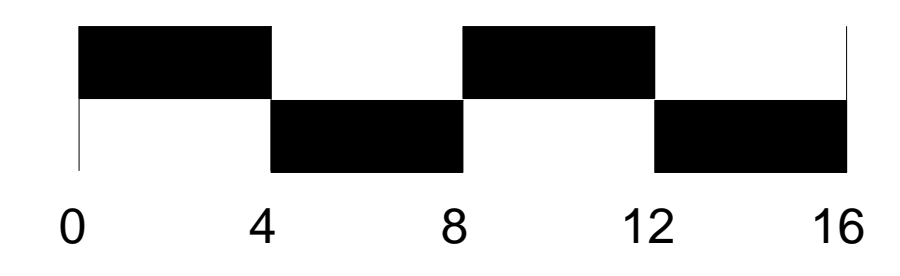


No.	Description	Date

1 PROPOSED LIFE SAFETY PLAN
 1/4" = 1'-0"

LIFE SAFETY DATA

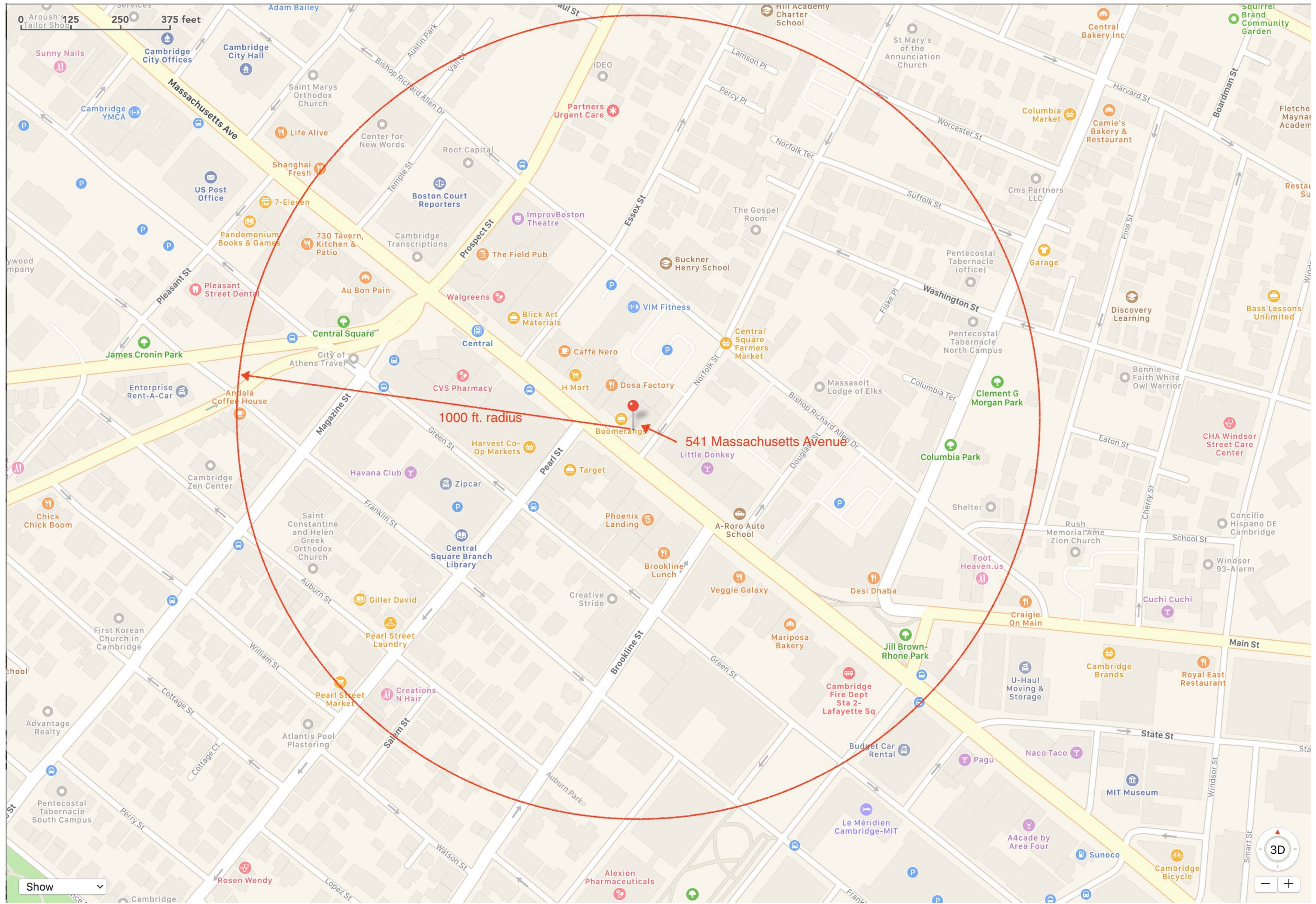
OCCUPANT LOAD		99
NUMBER OF EXITS	REQUIRED	MIN. 2
	PROVIDED	4
EXIT COMPONENT WIDTH	STAIRS	
	REQUIRED	MIN. 3'-0"
PROVIDED	4'-0"	
CORRIDORS	REQUIRED	MIN. 3'-0"
	PROVIDED	4'-0"
DOORS	REQUIRED	MIN. 32"x80"
	PROVIDED	36"x80"
DEAD END CORRIDOR	REQUIRED	MAX 50'
	PROVIDED	N/A
MAXIMUM TRAVEL DISTANCE	REQUIRED	200'
	PROVIDED	110'
COMMON PATH OF TRAVEL	REQUIRED	75'
	PROVIDED	45'
FIRE RATED WALL		---
EBU EBU	EXIT SIGN EXIT	FIRE EXTINGUISHER FE



PROJECT
541 Mass Ave
 Cambridge, MA 02139
 Proposed Life Safety Plan

Date	07.25.18
Project number	CAS
Drawn by	L.P. WORTH
Checked by	B. HAMPTON

A-004.00



ELTON HAMPTON ARCHITECTS
103 Terrace Street
Boston, MA 02120
617-708-1071

OWNER:
Revolutionary Growers, LLC
1 Oak Hill Road
Fitchburg, MA 01420

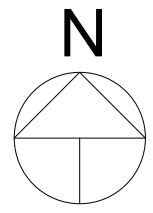
No.	Description	Date

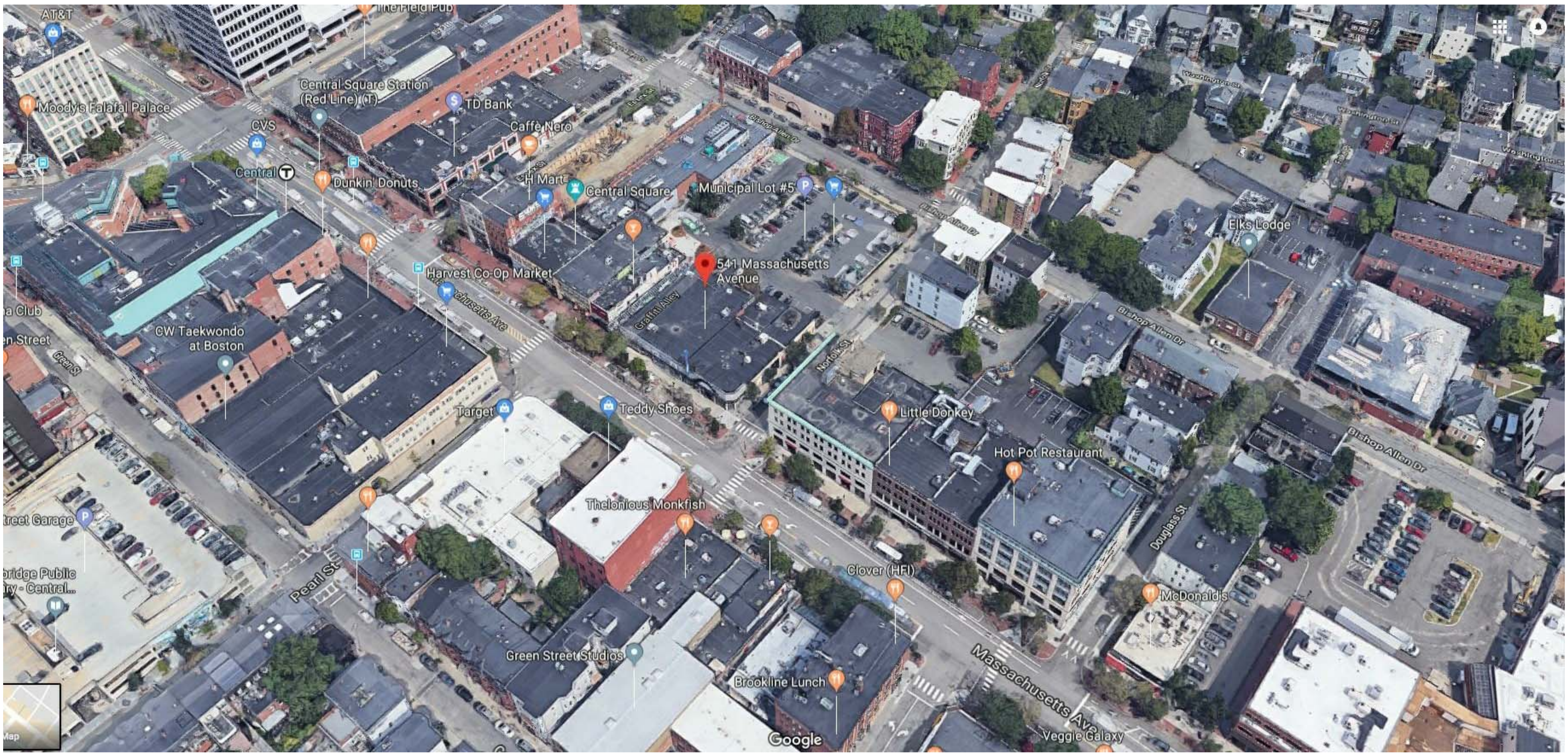
PROJECT
541 Mass Ave
Cambridge, MA 02139
Existing Conditions Map

Date	07.25.18
Project number	CAS
Drawn by	L.P. WORTH
Checked by	B. HAMPTON

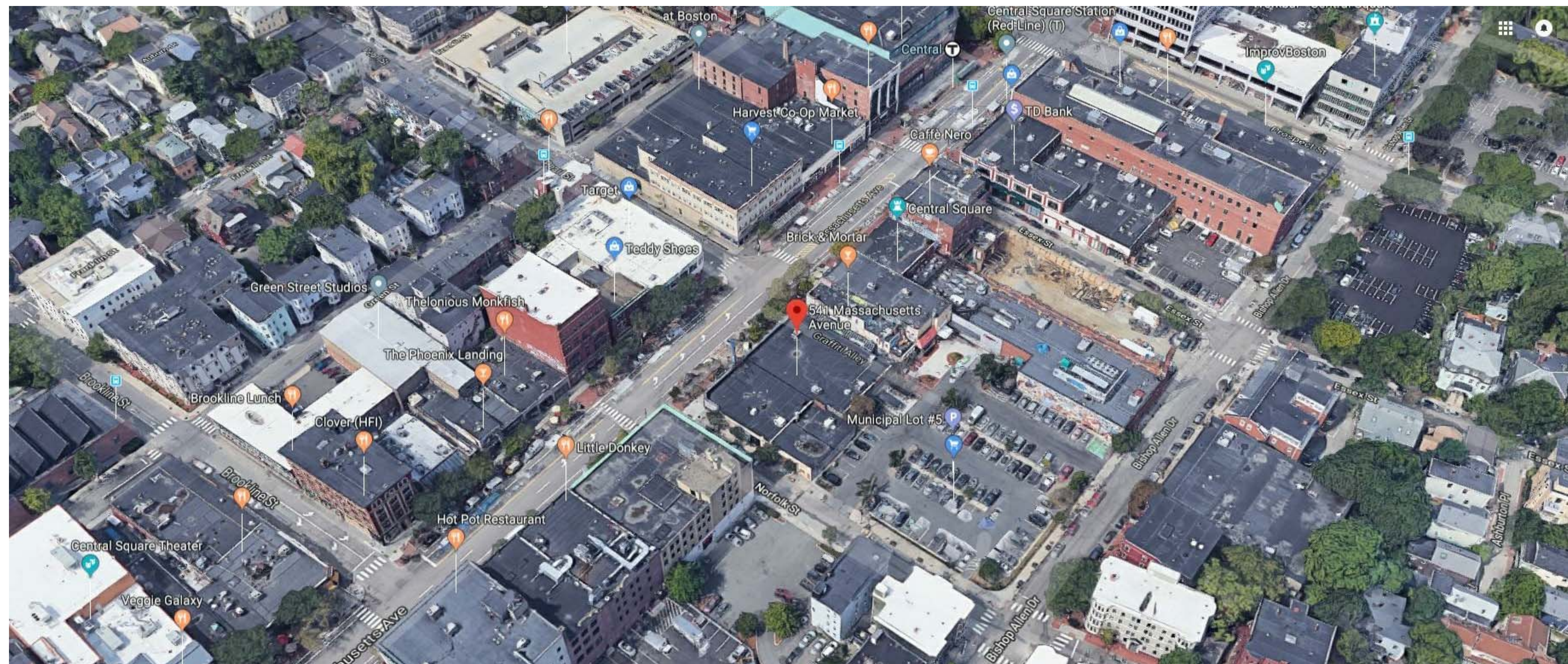
A-005.00

1 of





LOOKING NORTH



LOOKING WEST

OWNER:

Revolutionary Growers, LLC
 1 Oak Hill Road
 Fitchburg, MA 01420

No.	Description	Date

PROJECT
541 Mass Ave
 Cambridge, MA 02139
 Site Context Plans

Date 07.25.18
 Project number CAS
 Drawn by L.P. WORTH
 Checked by B. HAMPTON

A-005.01

OWNER:

Revolutionary Growers, LLC
1 Oak Hill Road
Fitchburg, MA 01420



No.	Description	Date

PROJECT
541 Mass Ave
Cambridge, MA 02139
Proposed Interior Rendering

Date	07.25.18
Project number	CAS
Drawn by	L.P. WORTH
Checked by	B. HAMPTON

A-005.04

