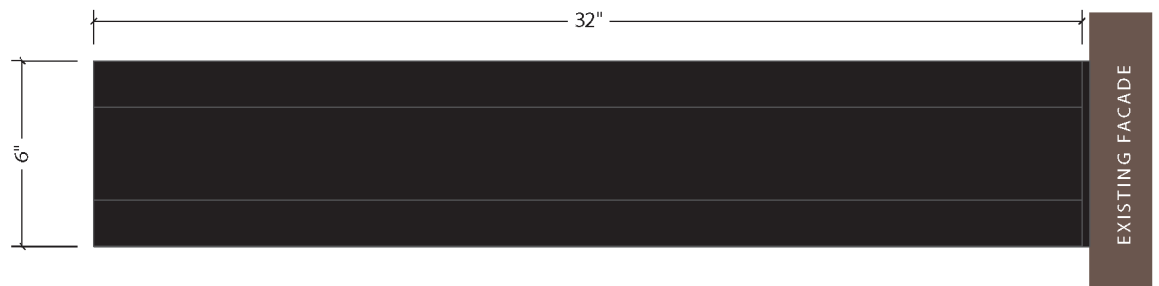
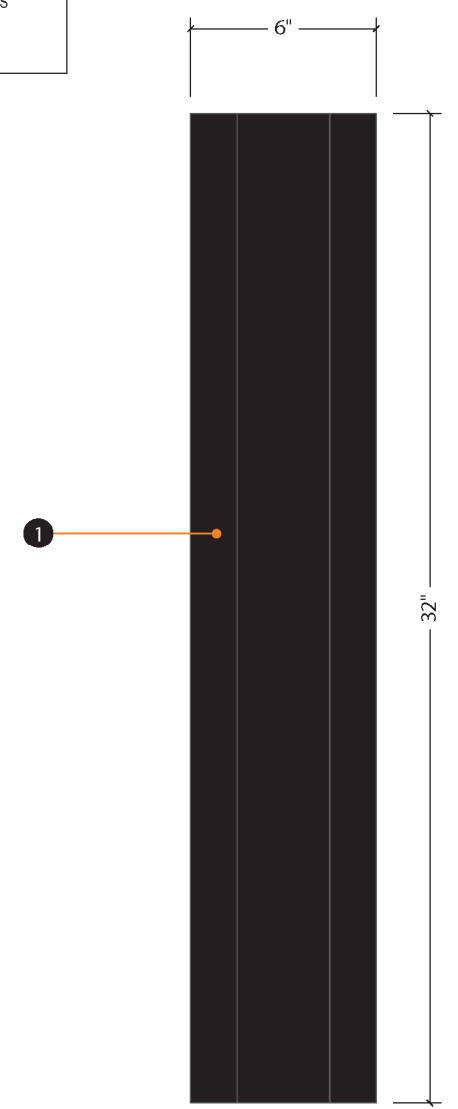


Internally Illuminated Flagmounted Sign

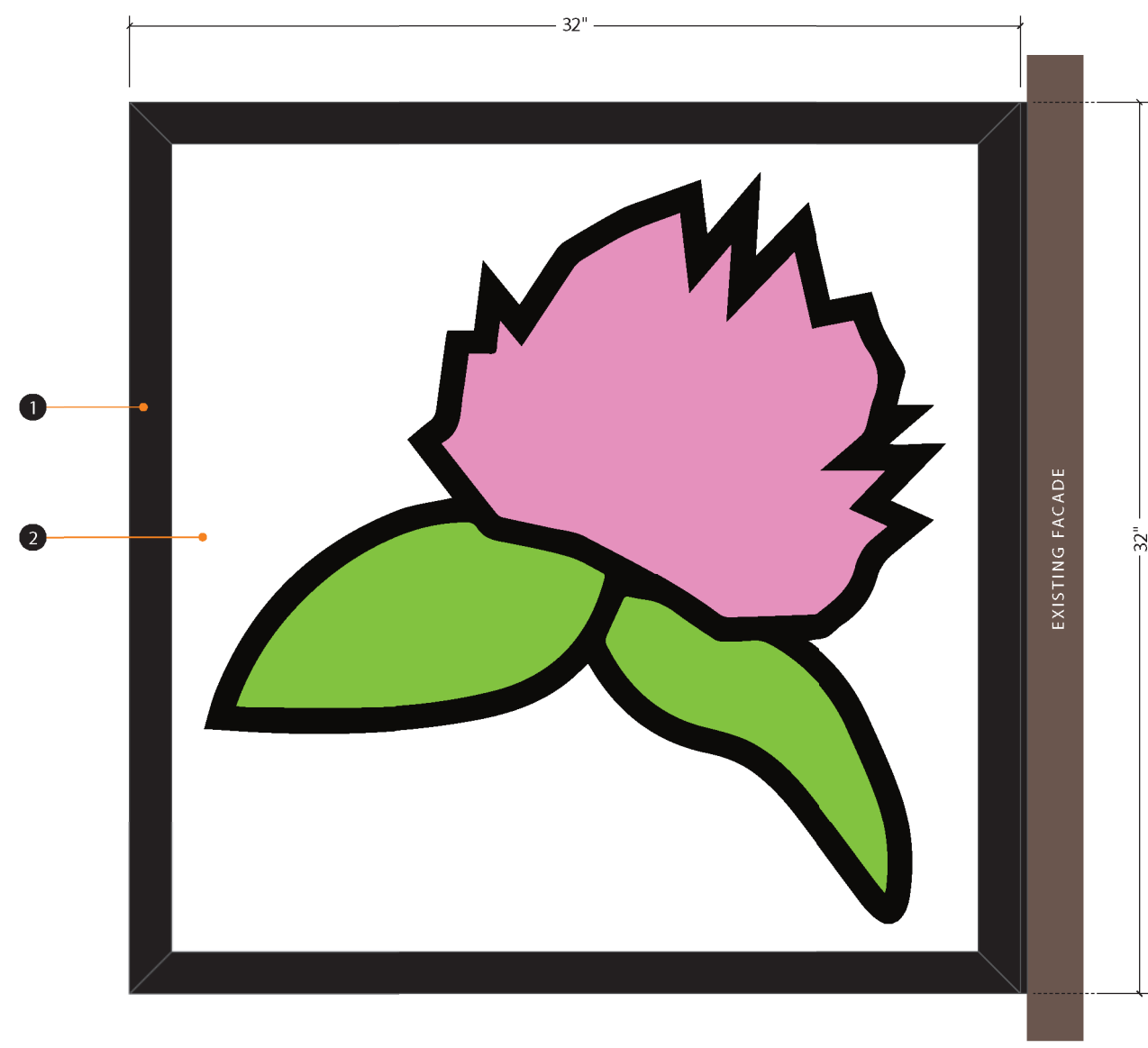
- Quantity: 1 Double-Sided
- 1 Internally-Lit Sign Cabinet
(All Visible Painted Black with Satin Finish)
 - Excellart Extrusion EC-9 Top/Bottom, ECR-9 Sides
 - 1.5" LF Moulding
 - TetraMax Doubles LEDs; 24 Volt Power Supply
 - 2 3/16" White Polycarbonate Face with Translucent Pressure-Sensitive Vinyl Graphics (Avery A7 Black, Trans FDC 108 Pink, Trans FDC 136 Lime Green or Digitally Printed (Latex) with 3M Lustre Lamination)
 - 3 Mechanically Fastened flush to facade with kwik bolts and self tappers



3 Plan View
Scale: 1:4
Fabrication



2 End View
Scale: 1:4
Fabrication



1 Elevation
Scale: 1:4
Fabrication

This sign is intended to be installed in accordance with the requirements of Article 600 of the National Electrical Code and/or other applicable local codes. This includes proper grounding and bonding of the sign.



170 Liberty Street
Brockton, MA 02301
508-580-0094

SALES REPRESENTATIVE
Tom Hannon

PROJECT MANAGER
Ashley Jimenez

ACCOUNT COORDINATOR
Myles Devaney

DESIGNER
CW/DJB

SCALE 1:4

SHEET
01 of 03

©2015 This document and the designs herein were produced expressly for this project and remain the property of Sign Design, Inc. They may not be reproduced or used for any other purpose without the written consent/authorization of Sign Design, Inc.
The colors printed on this page are strictly representational and should not be copied or reproduced in any way and/or used in connection with this project. Refer to color spec sheet for proper number match and system selection.

116810

Version 06
04.08.19

Clover Food Lab
496 Massachusetts Ave



PROPOSED | Photo Scale 1:10

EXISTING | Photo Scale 1:10



170 Liberty Street
Brockton, MA 02301
508-580-0094

SALES REPRESENTATIVE
Tom Hannon

PROJECT MANAGER
Ashley Jimenez

ACCOUNT COORDINATOR
Myles Devaney

DESIGNER
CW/DJB

SCALE 1:10

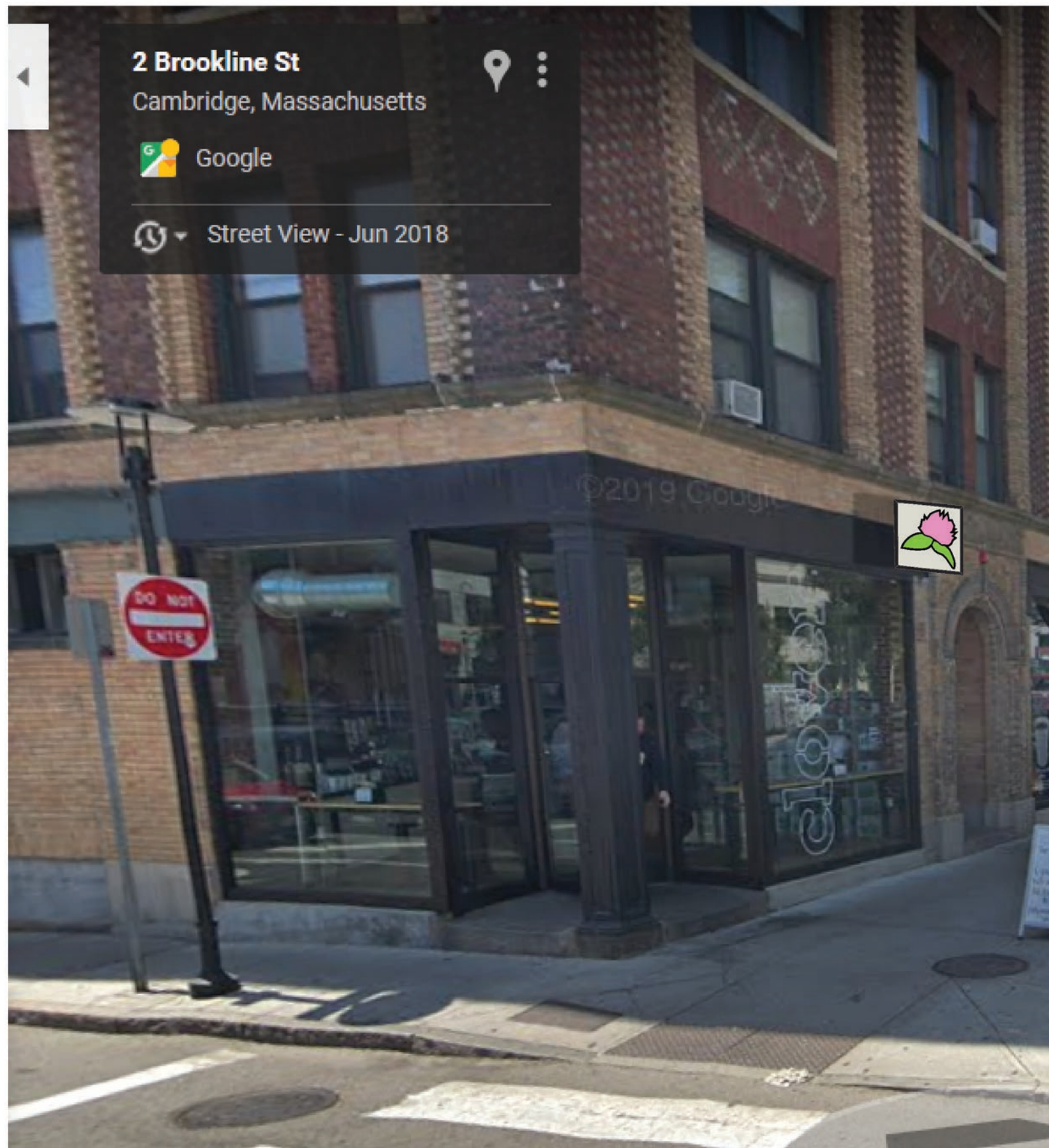
SHEET
02 of 03

©2015 This document and the designs herein were produced expressly for this project and remain the property of Sign Design, Inc. They may not be reproduced or used for any other purpose without the written consent/authorization of Sign Design, Inc.
The colors printed on this page are strictly representational and should not be copied or reproduced in any way and/or used in connection with this project. Refer to color spec sheet for proper number, mch and system selection.

116810

Version 06
04.08.19

Clover Food Lab
496 Massachusetts Ave



170 Liberty Street
Brockton, MA 02301
508-580-0094

SALES REPRESENTATIVE
Tom Hannon

PROJECT MANAGER
Ashley Jimenez

ACCOUNT COORDINATOR
Myles Devaney

DESIGNER
CW/DJB

SCALE 1:10

SHEET
03 of 03

©2015 This document and the designs herein were produced expressly for this project and remain the property of Sign Design, Inc. They may not be reproduced or used for any other purpose without the written consent/authorization of Sign Design, Inc.
The colors printed on this page are strictly representational and should not be copied or reproduced in any way and/or used in connection with this project. Refer to color spec sheet for proper number match and system selection.