

Updated Set.
for CHC Jan 6, 2022
hearing



THE GARAGE

36 John F. Kennedy St. - 81 Mt. Auburn St. - 33 Dunster St.
Cambridge, MA

Volume 2

Planning Board Special Permit Application
December 6, 2021

CHC Supplement
January 6, 2022

Bruner/Cott
ARCHITECTS

TRINITY PROPERTY
MANAGEMENT, INC.
Established In 1960

VOLUME 2 - TABLE OF CONTENTS

Cover	
Table of Contents	2
Overview	3
Harvard Sq Conservation District Plan	4
Site Plan	5
Existing Condition	6-7
Proposed Site Plan	8
Ground Floor Condition	9
Bike Parking	10
Building History	11-13
Massing Diagram	14
Renderings	15-32
Materials	33-35
Elevations	36-47
Building Stepbacks	48-51
Survey Plan	52
Floor Plans	53-54
Building Section	55
Green Roof Plan	56

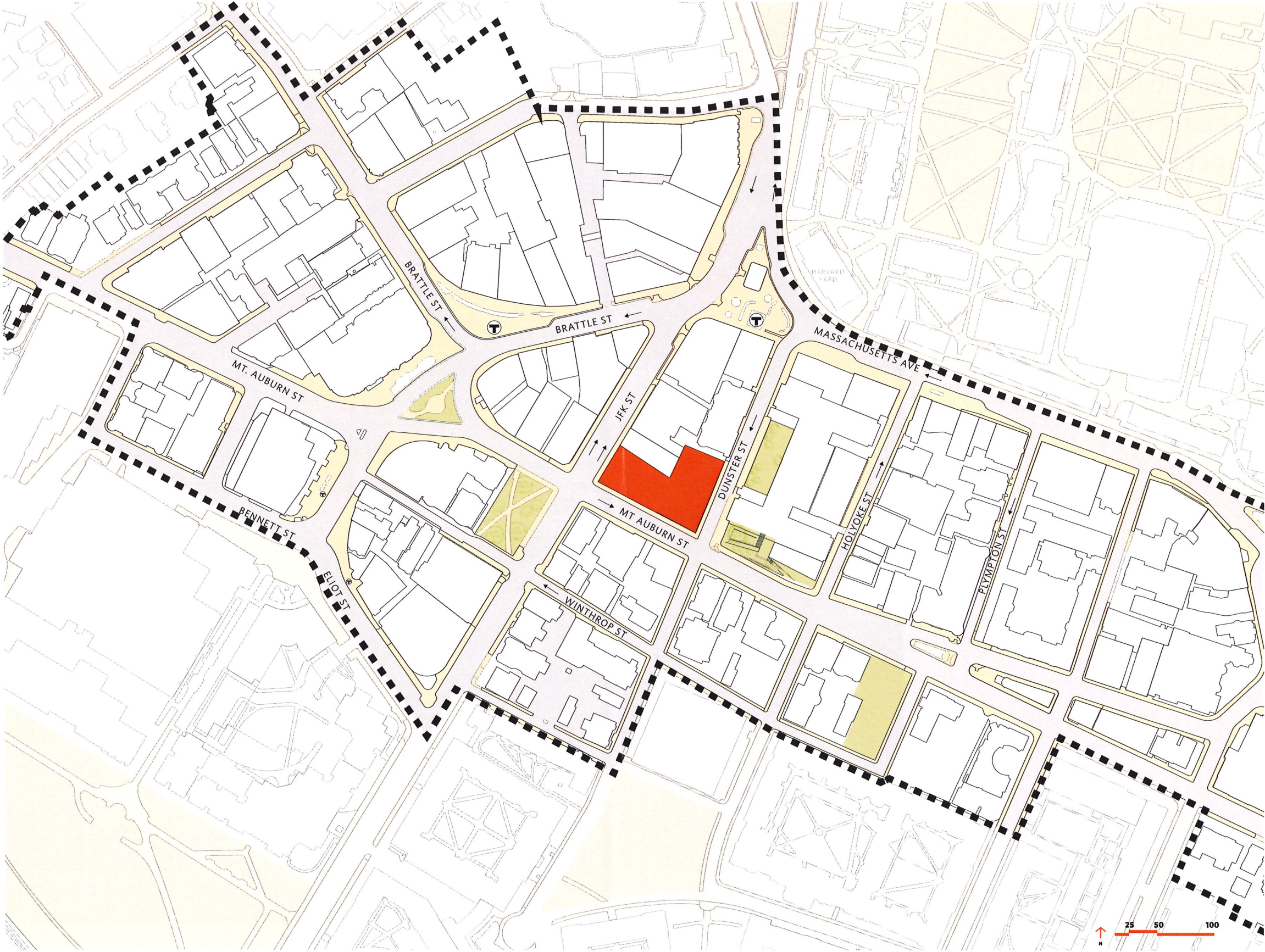
OVERVIEW

The project recognizes the importance of its location in the heart of Harvard Square, and the distinction of the building frontage on three streets.

The building design highlights both its history and re-imagined future as memorable and active contributor to the Harvard Square District.



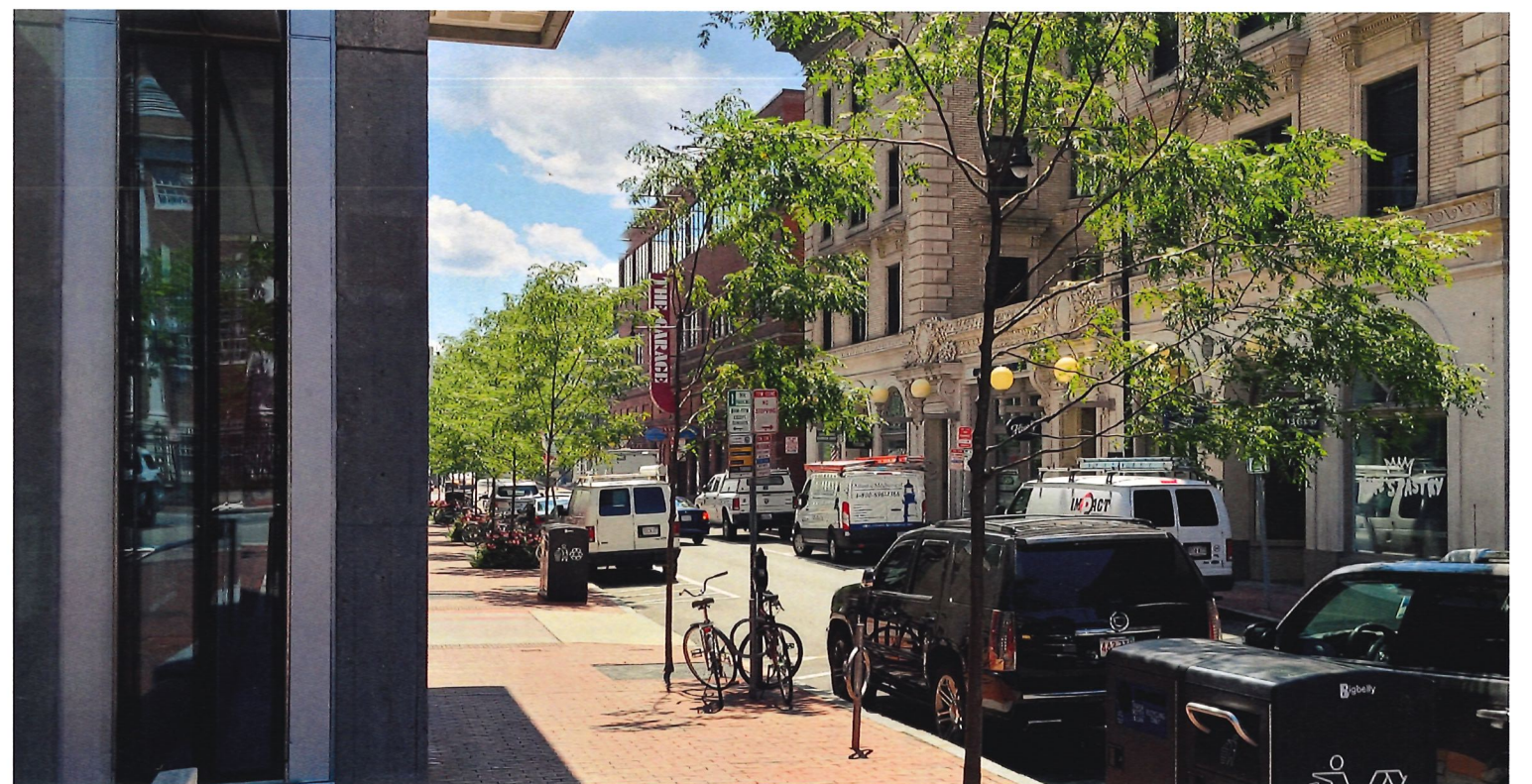
HARVARD SQ CONSERVATION DISTRICT



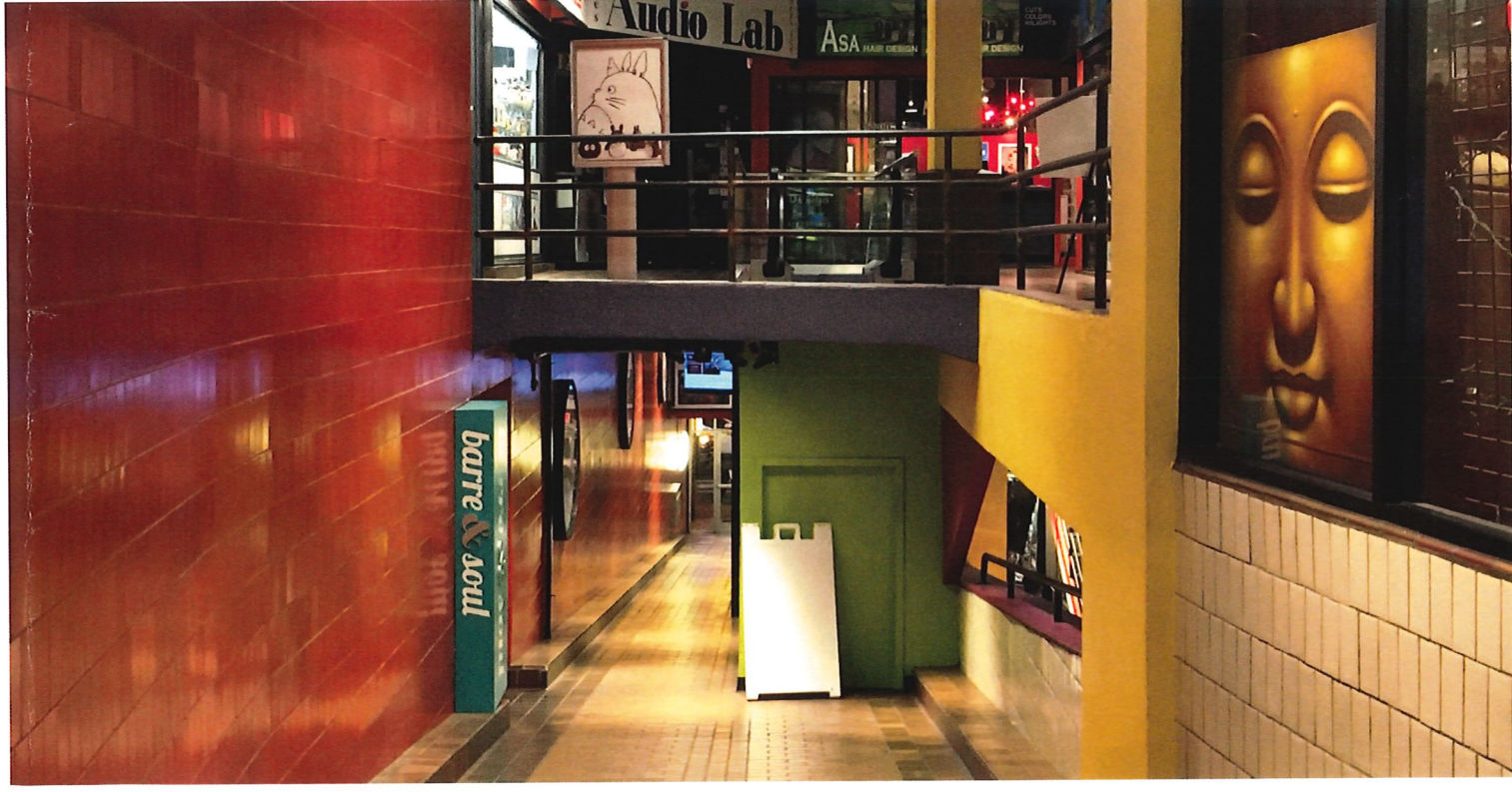
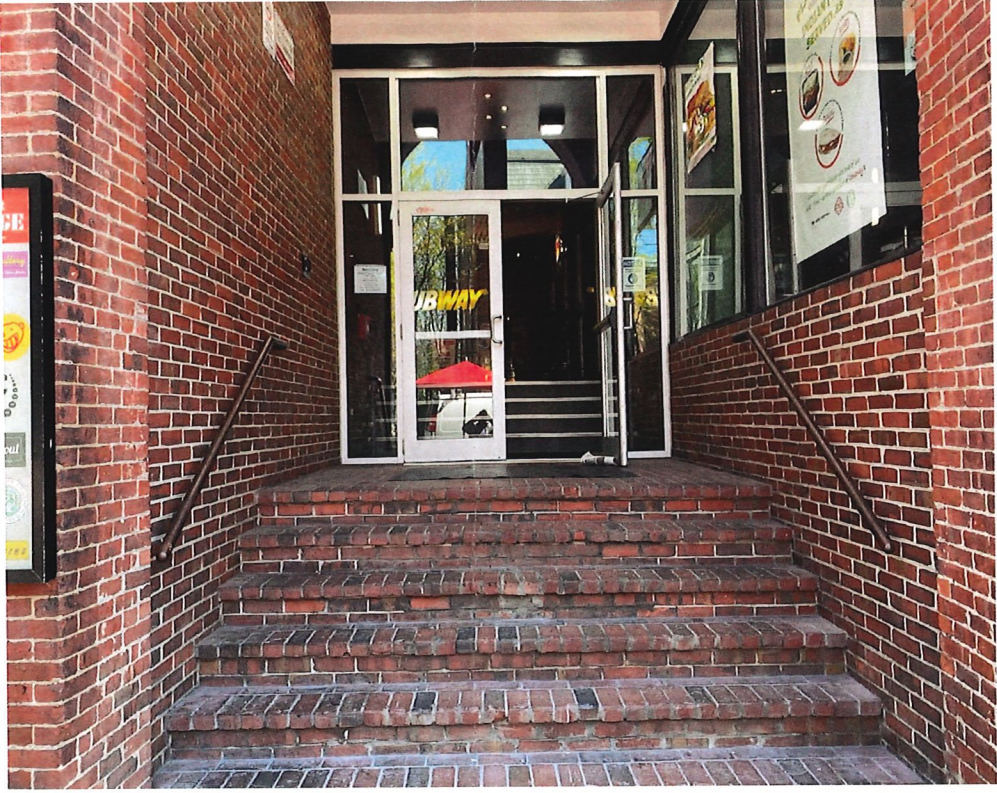
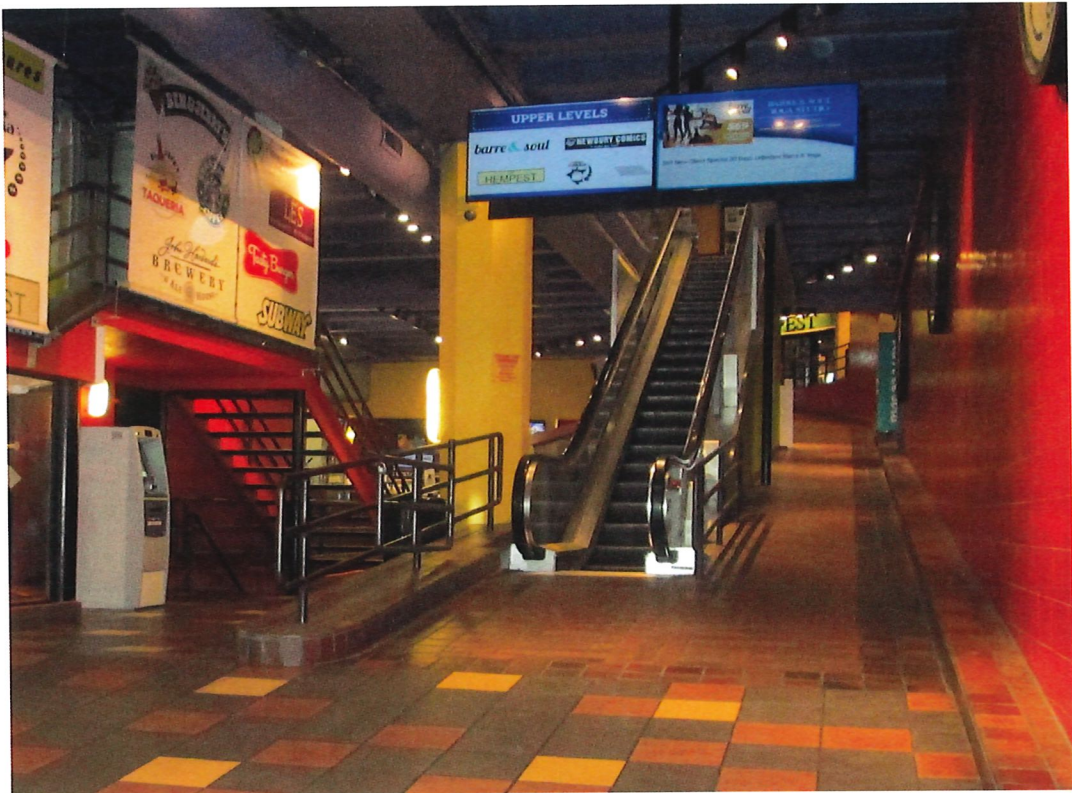
SITE PLAN



EXISTING CONDITION



EXISTING CONDITION



PROPOSED SITE PLAN

CONTEXT

LEGEND

- Property Line
- Existing Traffic Light
- Existing Streelight
- Existing Fire Hydrant



Existing City Trees

Existing Planters

0' 8' 16' 32'



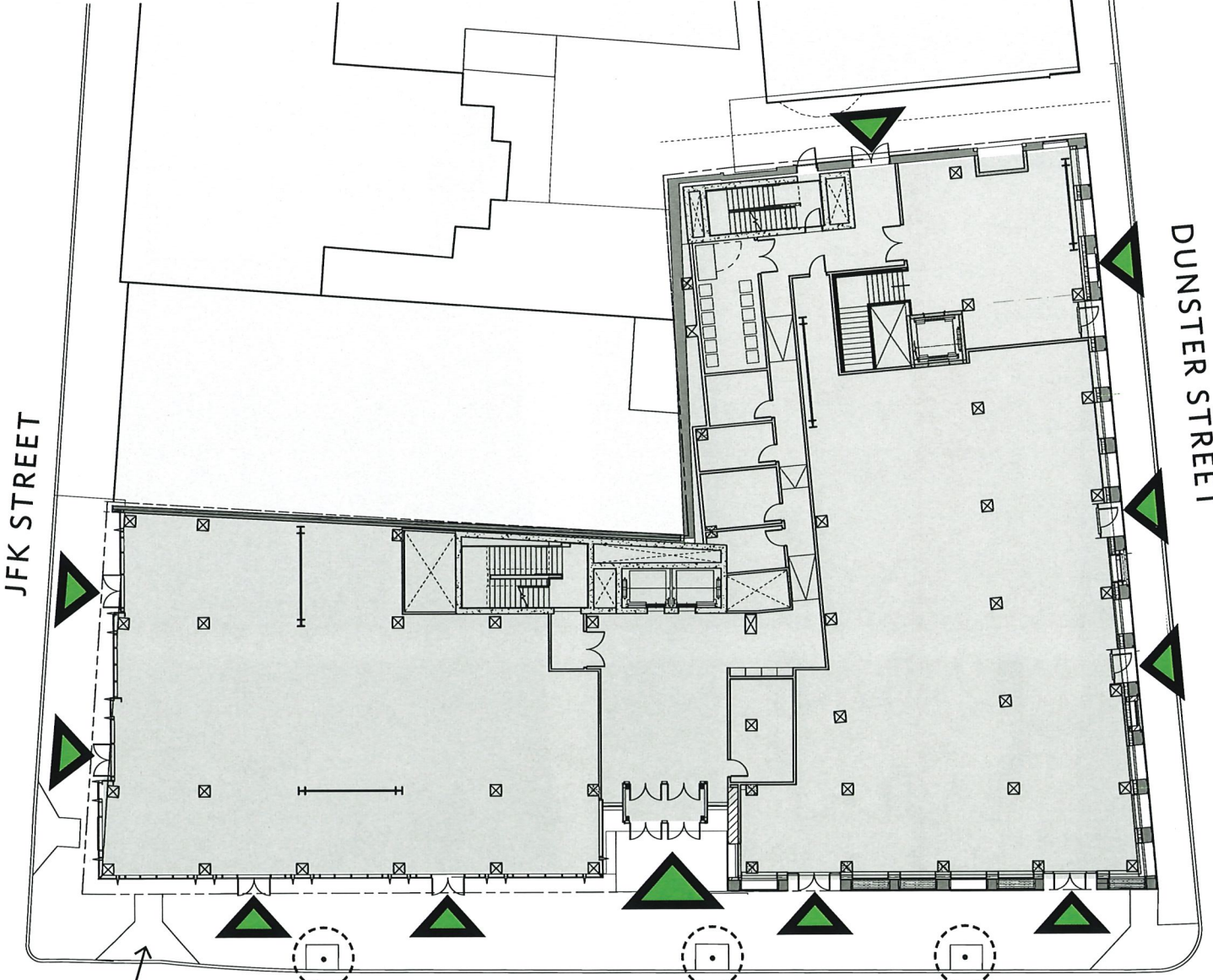
GROUND FLOOR PLAN

ENTRIES

-  Non Accessible Entry
-  Accessible Entry



EXISTING GROUND FLOOR



PROPOSED GROUND FLOOR

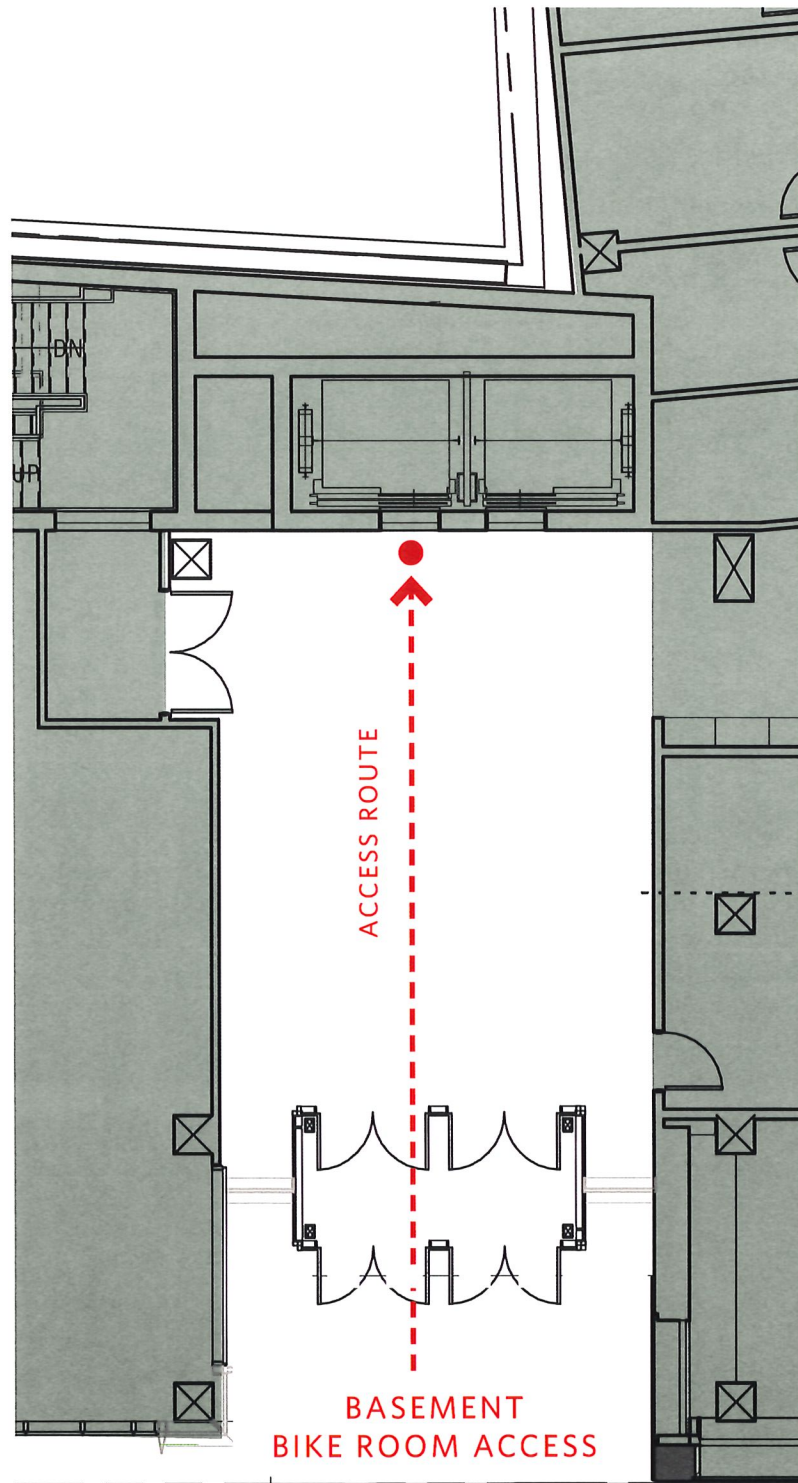
Existing City Curb Cuts
Existing City Trees

0' 8' 16' 32'

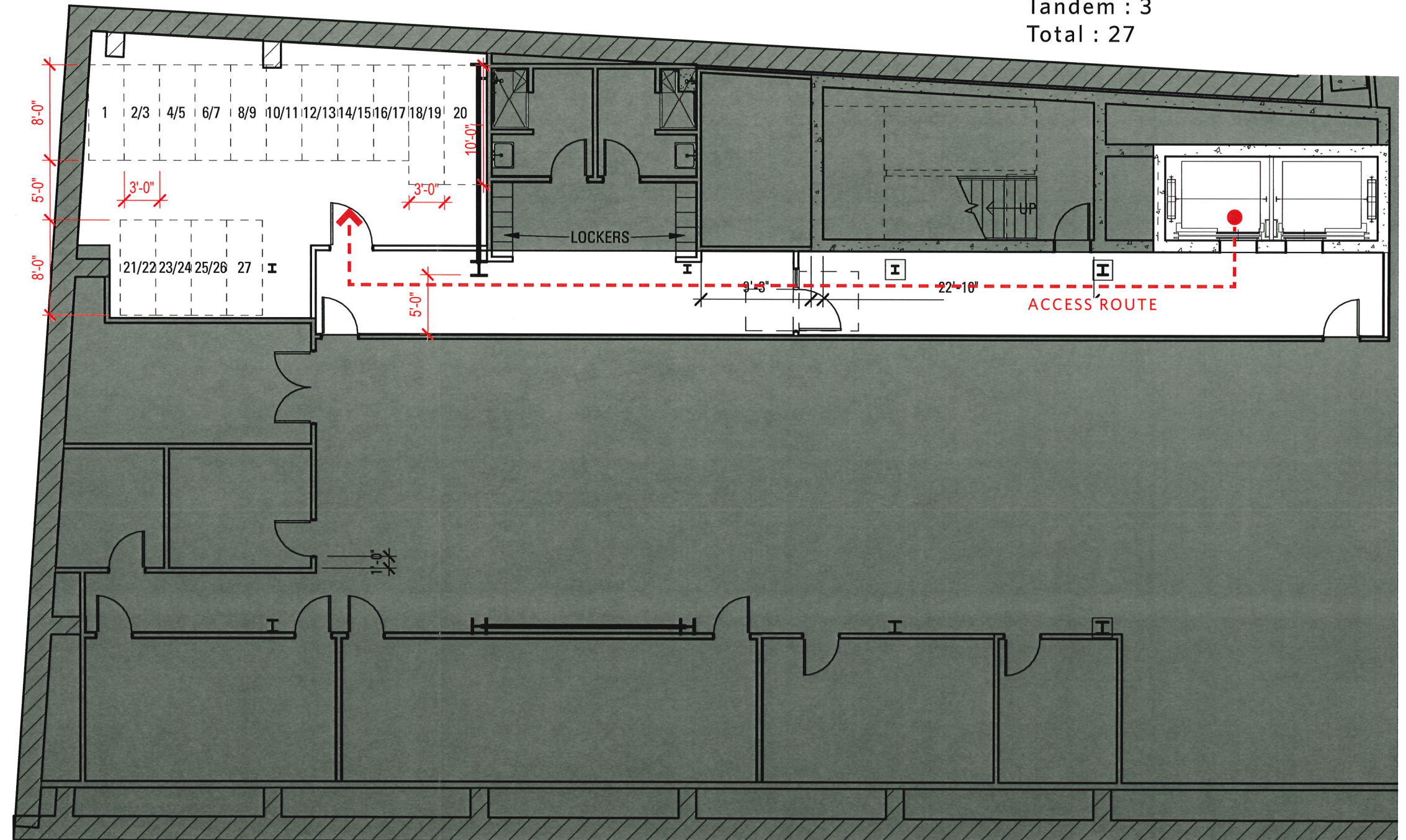


PROPOSED BIKE PARKING

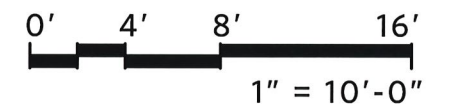
- Short Term Bike Parking**
 Total : 0
 Project to contribute to
 Public Bicycle Parking Fund
- Long Term Bike Parking**
 Regular : 24
 Tandem : 3
 Total : 27



GROUND FL PLAN



BASEMENT PLAN - BIKE ROOM



BUILDING HISTORY

TIMELINE

1860-1897 HORSE STABLE



HORSE HOUSE NO. 6.

1897-1924 HORSE STABLE



UNION RAILWAY STABLE

1924-1972 PARKING GARAGE



THE HARVARD SQUARE GARAGE

1972-2021 SHOPPING CENTER



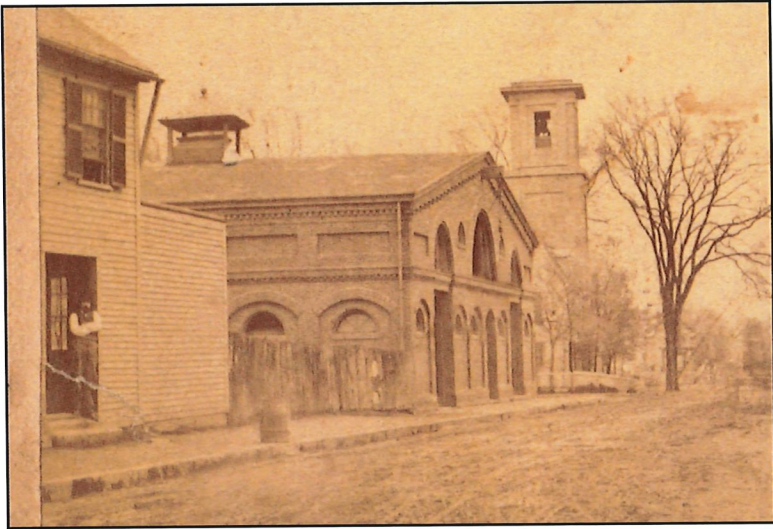
THE GARAGE

EXISTING CONDITION



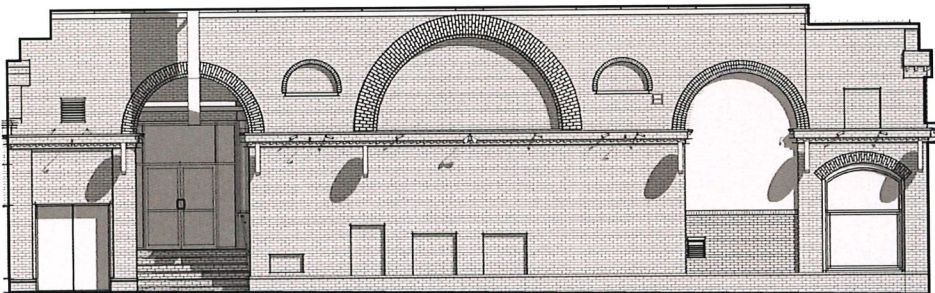
DIAGRAM

TIMELINE

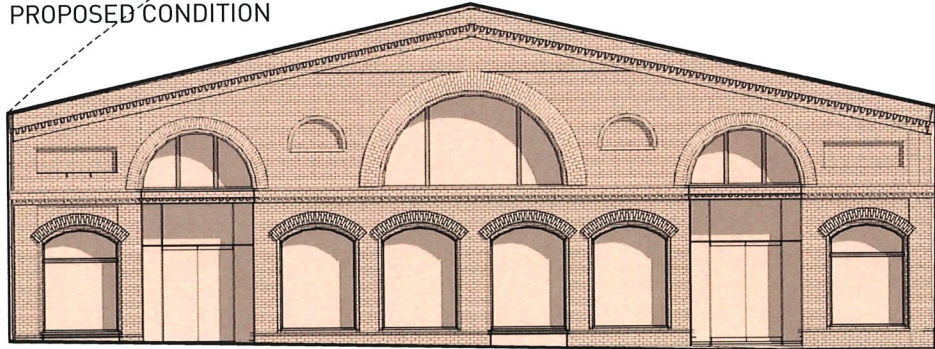


1860 HORSE STABLE

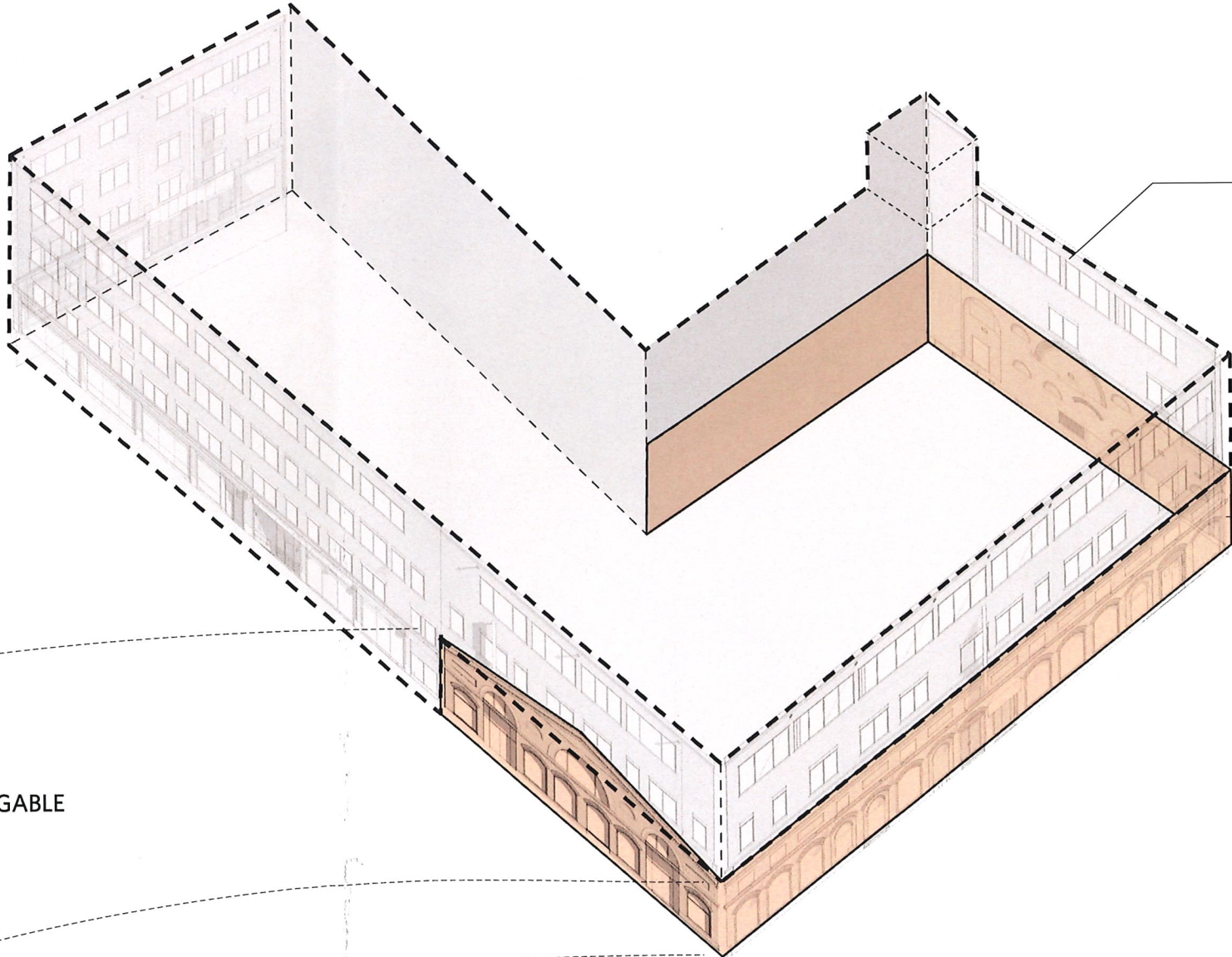
EXISTING CONDITION



PROPOSED CONDITION



1860'S FACADE AND GABLE
PROFILE TO BE
RECONSTRUCTED

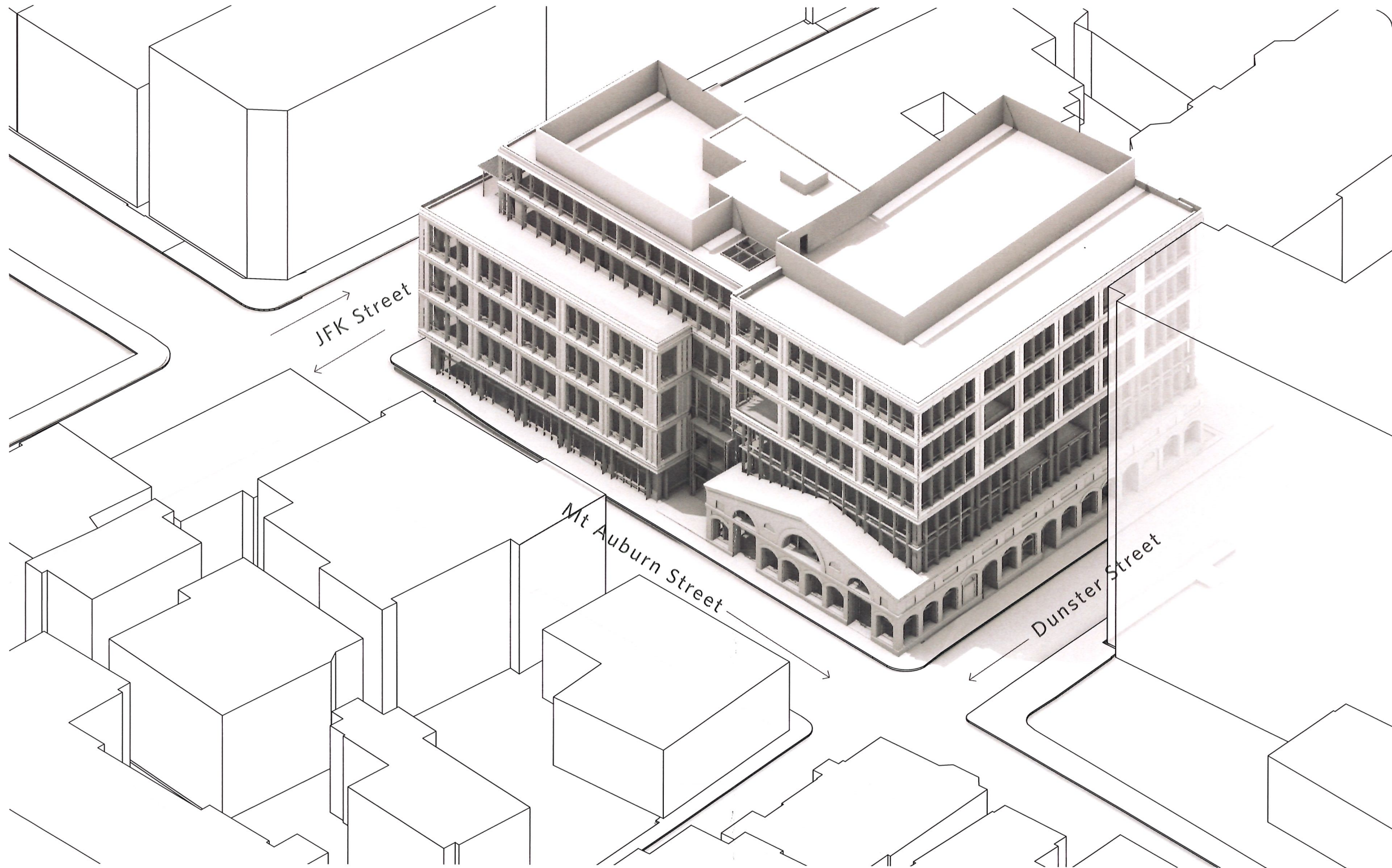


EXISTING BUILDING
TO BE DEMOLISHED

EXISTING MASONRY
TO REMAIN

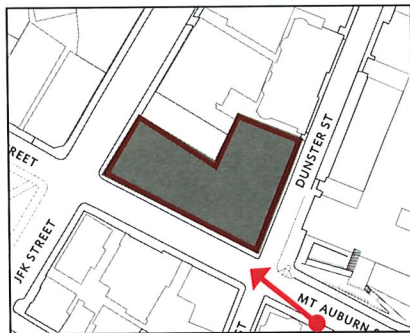
DIAGRAM

MASSING



EXISTING

MT AUBURN VIEW LOOKING WEST

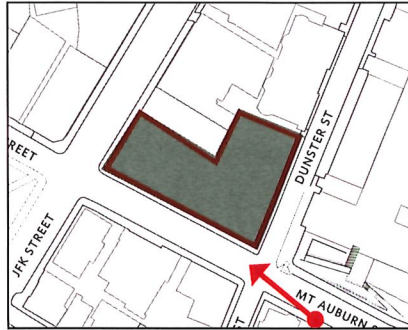


KEY PLAN



PROPOSED

MT AUBURN VIEW LOOKING WEST

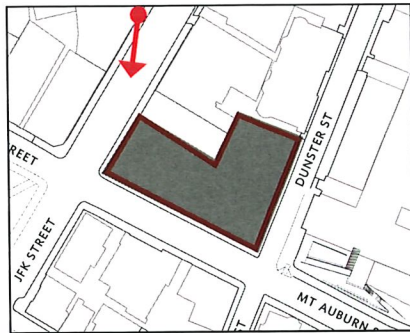


KEY PLAN



EXISTING

JFK VIEW LOOKING SOUTH

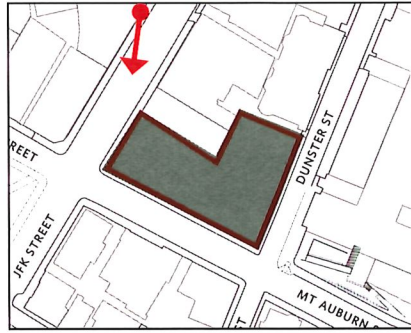


KEY PLAN



PROPOSED

JFK VIEW LOOKING SOUTH

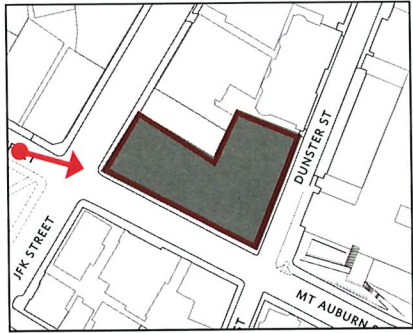


KEY PLAN



EXISTING

MT AUBURN VIEW LOOKING EAST

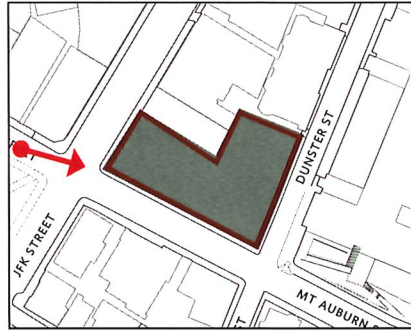


KEY PLAN



PROPOSED

MT AUBURN VIEW LOOKING EAST

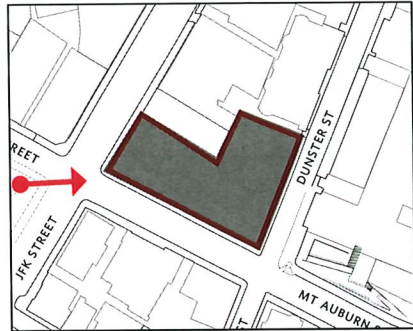


KEY PLAN



EXISTING

VIEW FROM WINTHROP PARK

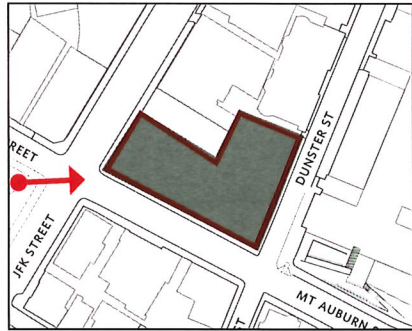


KEY PLAN



PROPOSED

VIEW FROM WINTHROP PARK

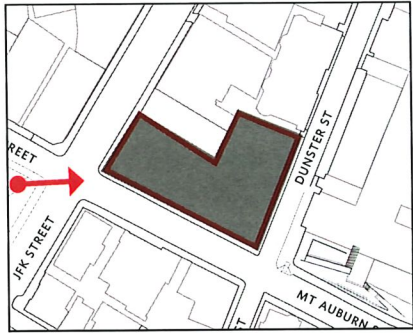


KEY PLAN



PROPOSED - NIGHT

VIEW FROM WINTHROP PARK



KEY PLAN

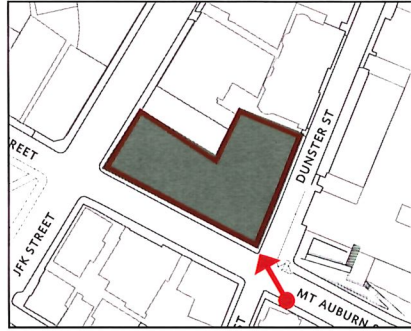
EXTERIOR BUILDING LIGHTING DESCRIPTION:

Building mounted, shielded LED accent lights to highlight the architectural features of the project.



EXISTING

MT AUBURN LOOKING NORTH WEST

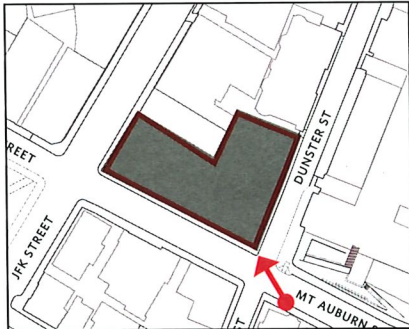


KEY PLAN



PROPOSED

MT AUBURN LOOKING NORTH WEST

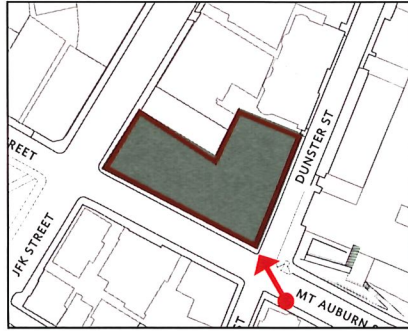


KEY PLAN



PROPOSED - NIGHT

MT AUBURN LOOKING NORTH WEST



KEY PLAN

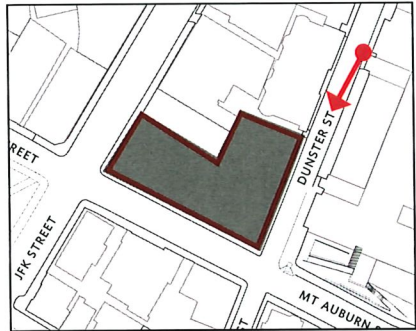
EXTERIOR BUILDING LIGHTING DESCRIPTION:

Building mounted, shielded LED accent lights to highlight the architectural features of the project.



EXISTING

DUNSTER VIEW LOOKING SOUTH

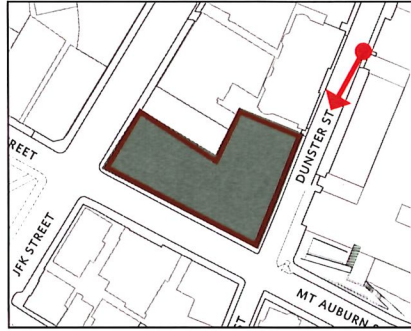


KEY PLAN



PROPOSED

DUNSTER VIEW LOOKING SOUTH

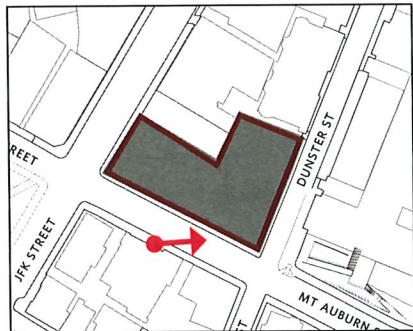


KEY PLAN



EXISTING

MT. AUBURN LOOKING EAST

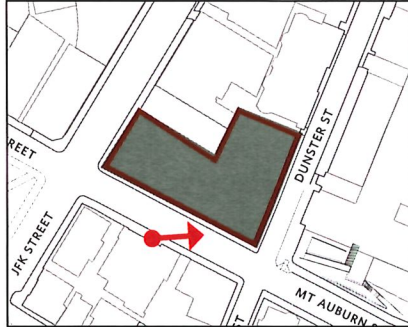


KEY PLAN



PROPOSED

MT. AUBURN LOOKING EAST

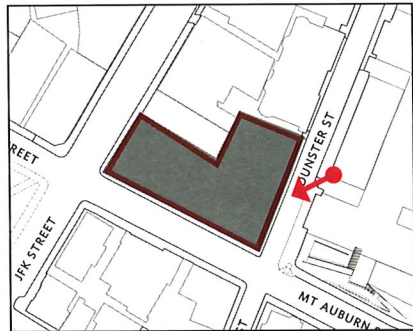


KEY PLAN



EXISTING

DUNSTER VIEW LOOKING SOUTH

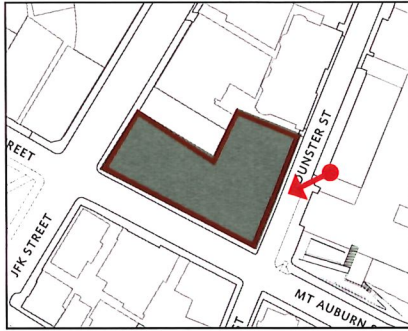


KEY PLAN



PROPOSED

DUNSTER VIEW LOOKING SOUTH



KEY PLAN

