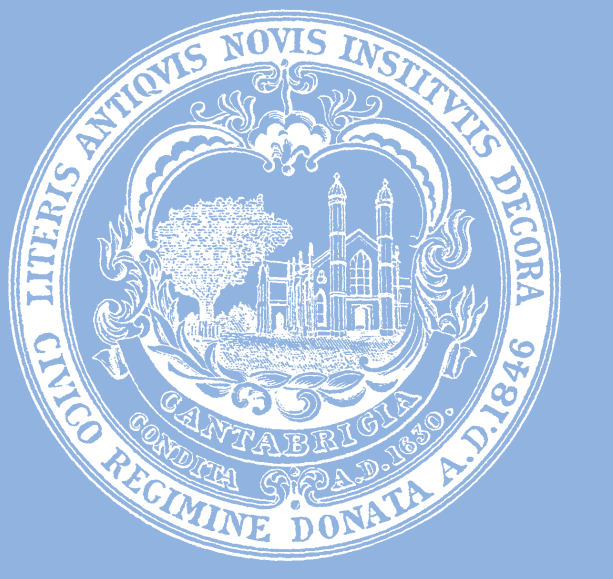




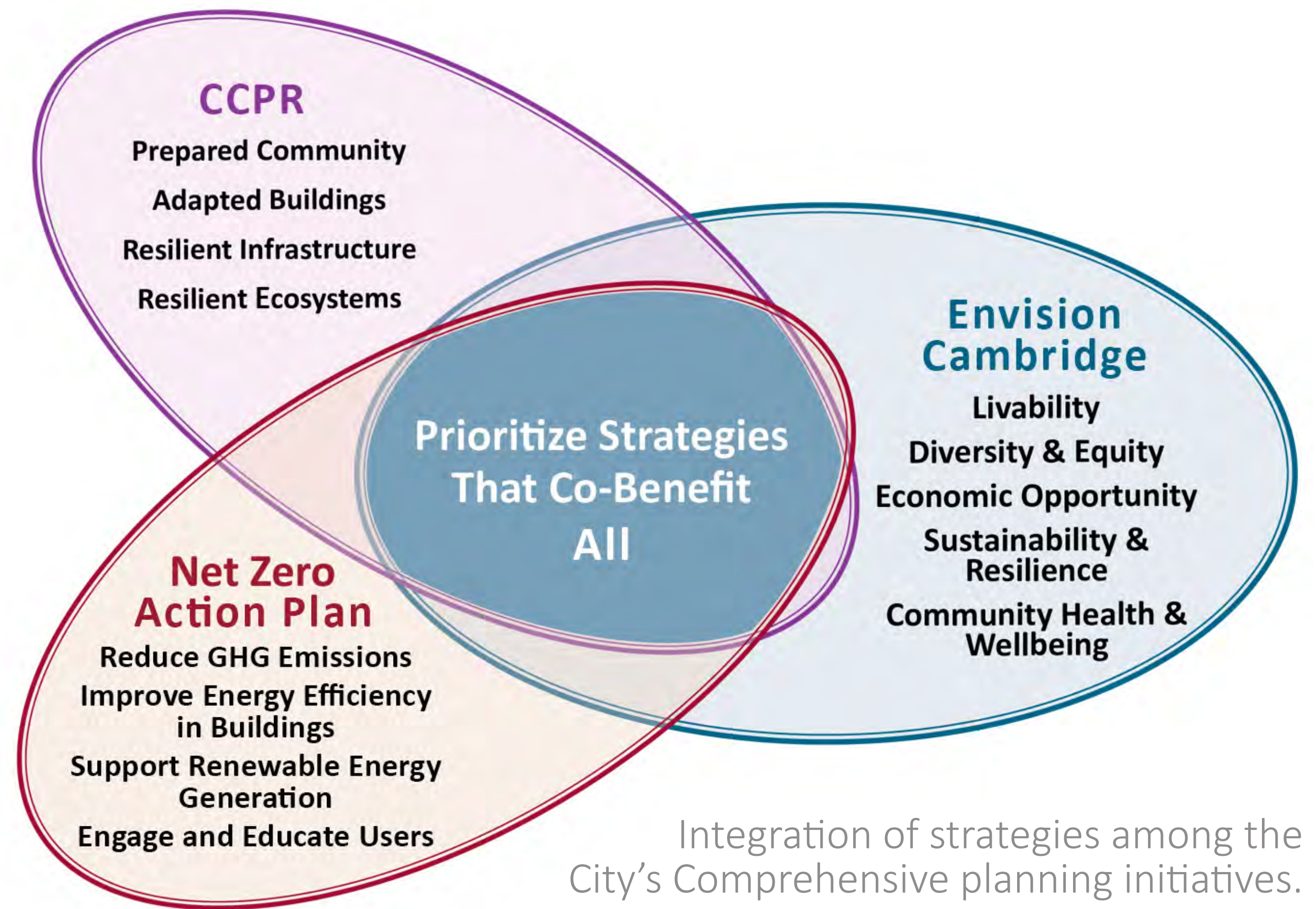
OVERVIEW

CLIMATE CHANGE PREPAREDNESS & RESILIENCE (CCPR) PLAN



HOW IS CAMBRIDGE PREPARING FOR CLIMATE CHANGE?

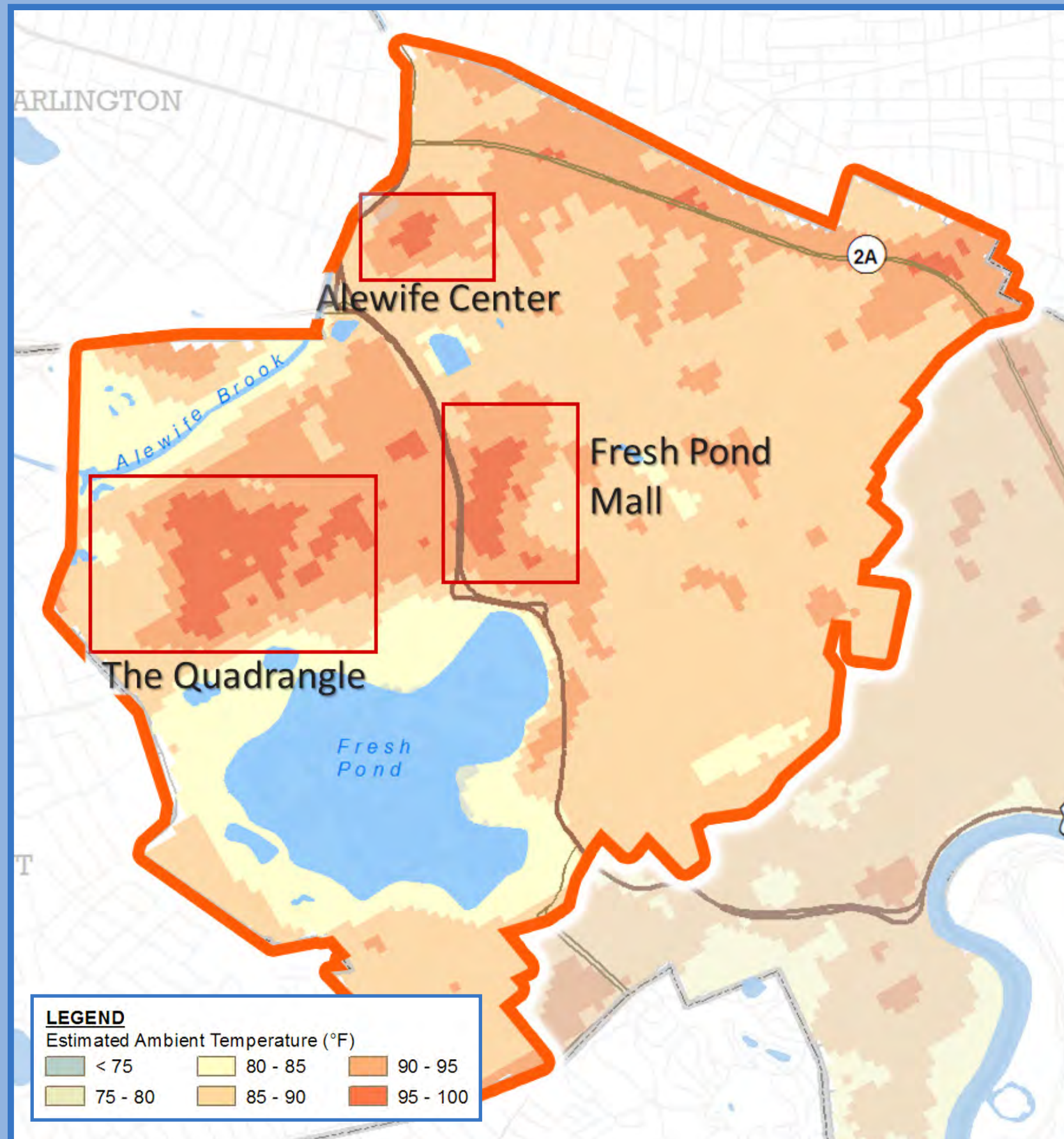
Based on the Vulnerability Assessment, the Climate Change Preparedness and Resilience (CCPR) Plan is being developed as a practical guide for the City of Cambridge (the City) to implement specific strategies in response to climate change threats: **heat**, flooding from **precipitation**, flooding from **sea level rise** and **storm surge** (SLR/SS).



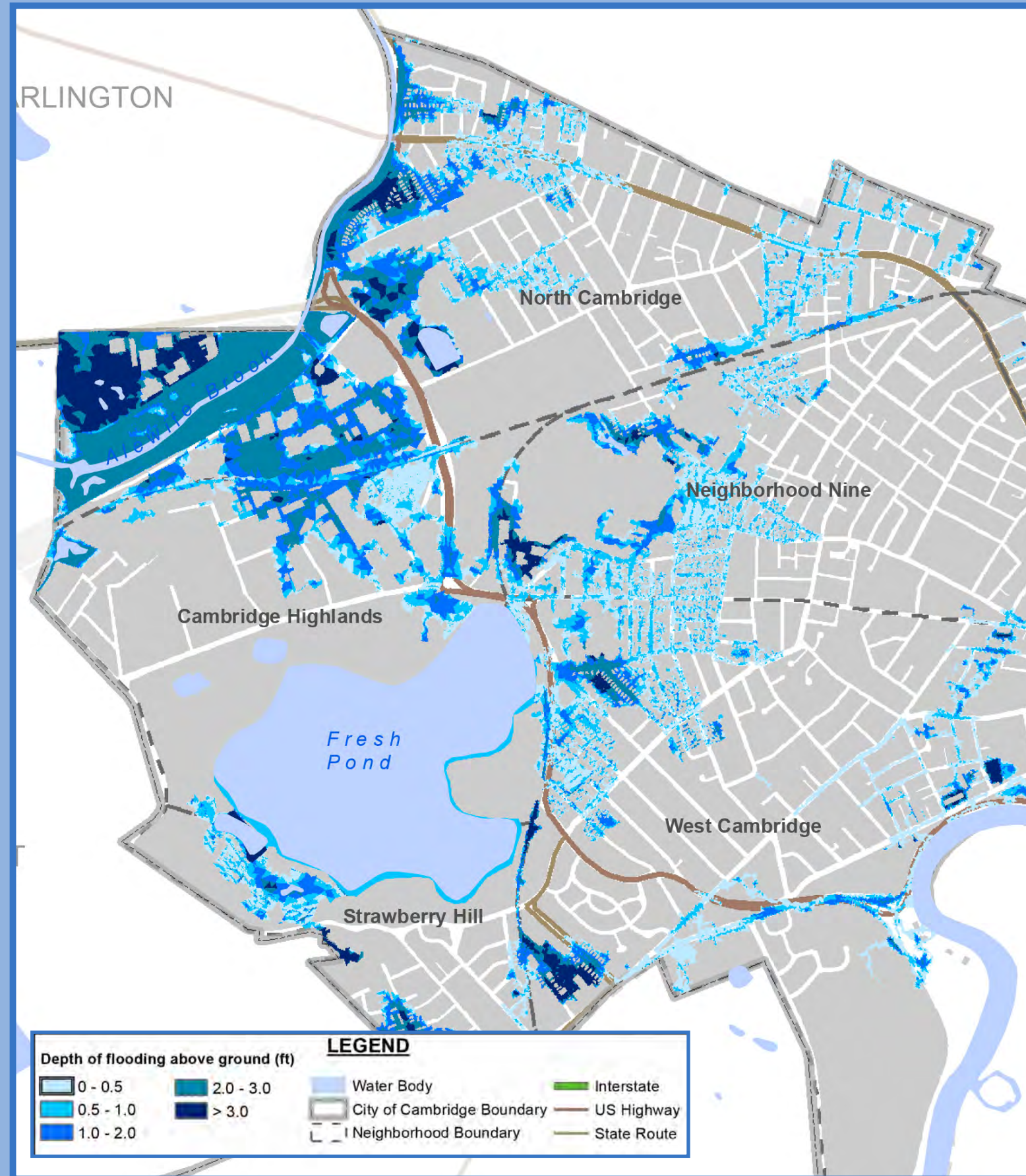
Integration of strategies among the City's Comprehensive planning initiatives.
CCPR, 2017

HOW WILL ALEWIFE BE IMPACTED?

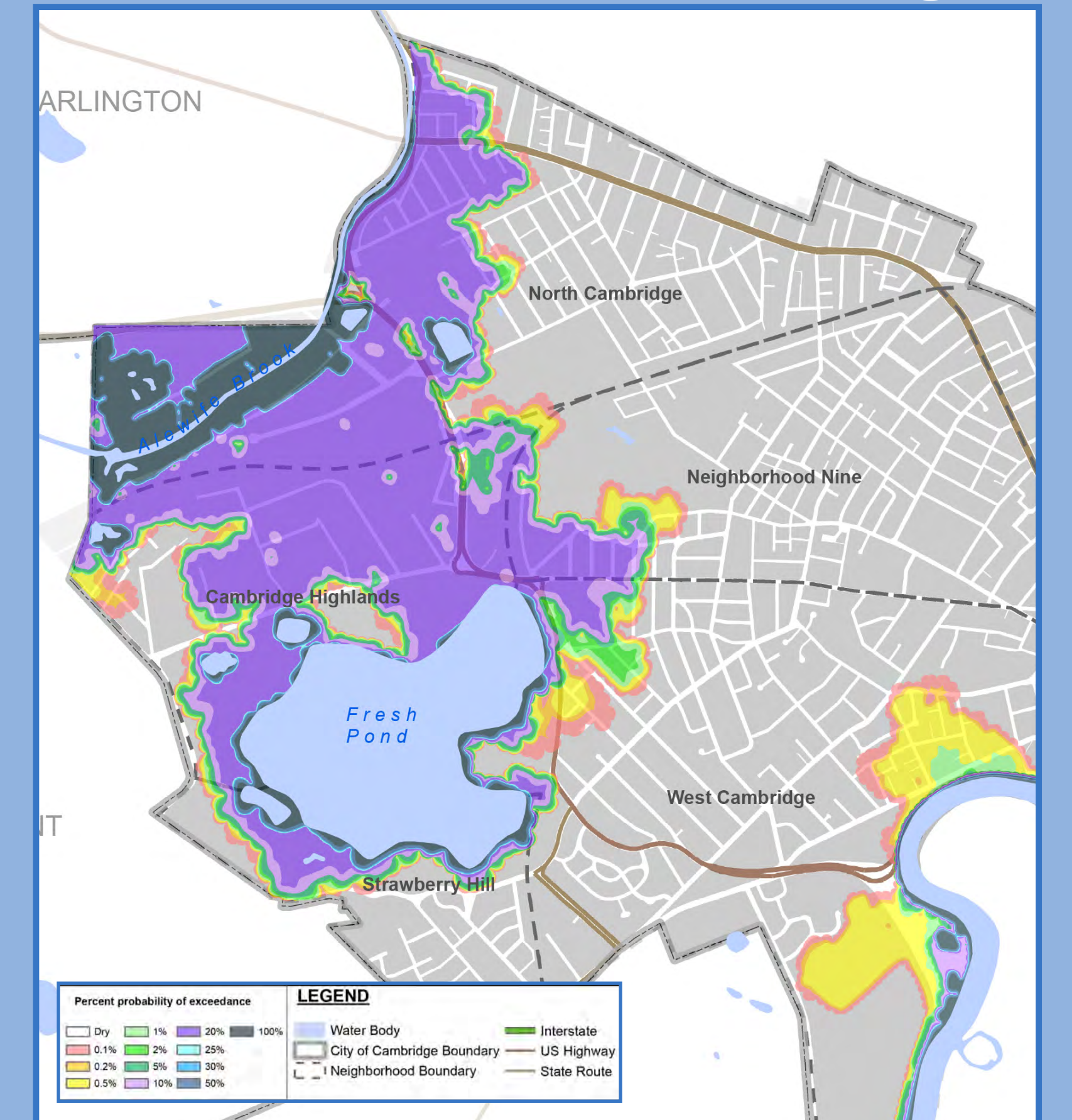
Heat



Precipitation



Sea Level Rise/Storm Surge



WHERE CAN I LEARN MORE?

ALEWIFE PREPAREDNESS PLAN:
www.cambridgema.gov/climateprep

CCPR HANDBOOK:
www.cambridgema.gov/climateprep

FLOOD VIEWER:
<http://www.cambridgema.gov/Services/FloodMap>

