

Harvard Square Kiosks 1912, 1927, 1983

Cambridge Historical Commission
September 28, 2016



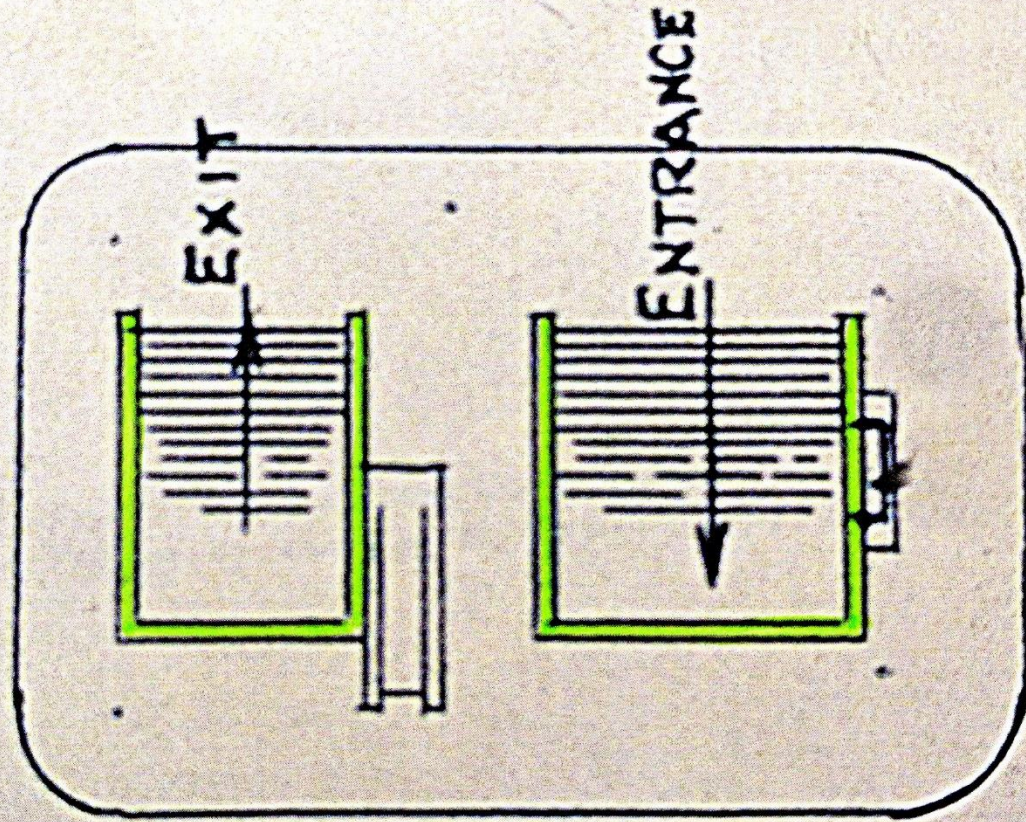
Harvard Square in 1890, looking east



Harvard Square about 1912

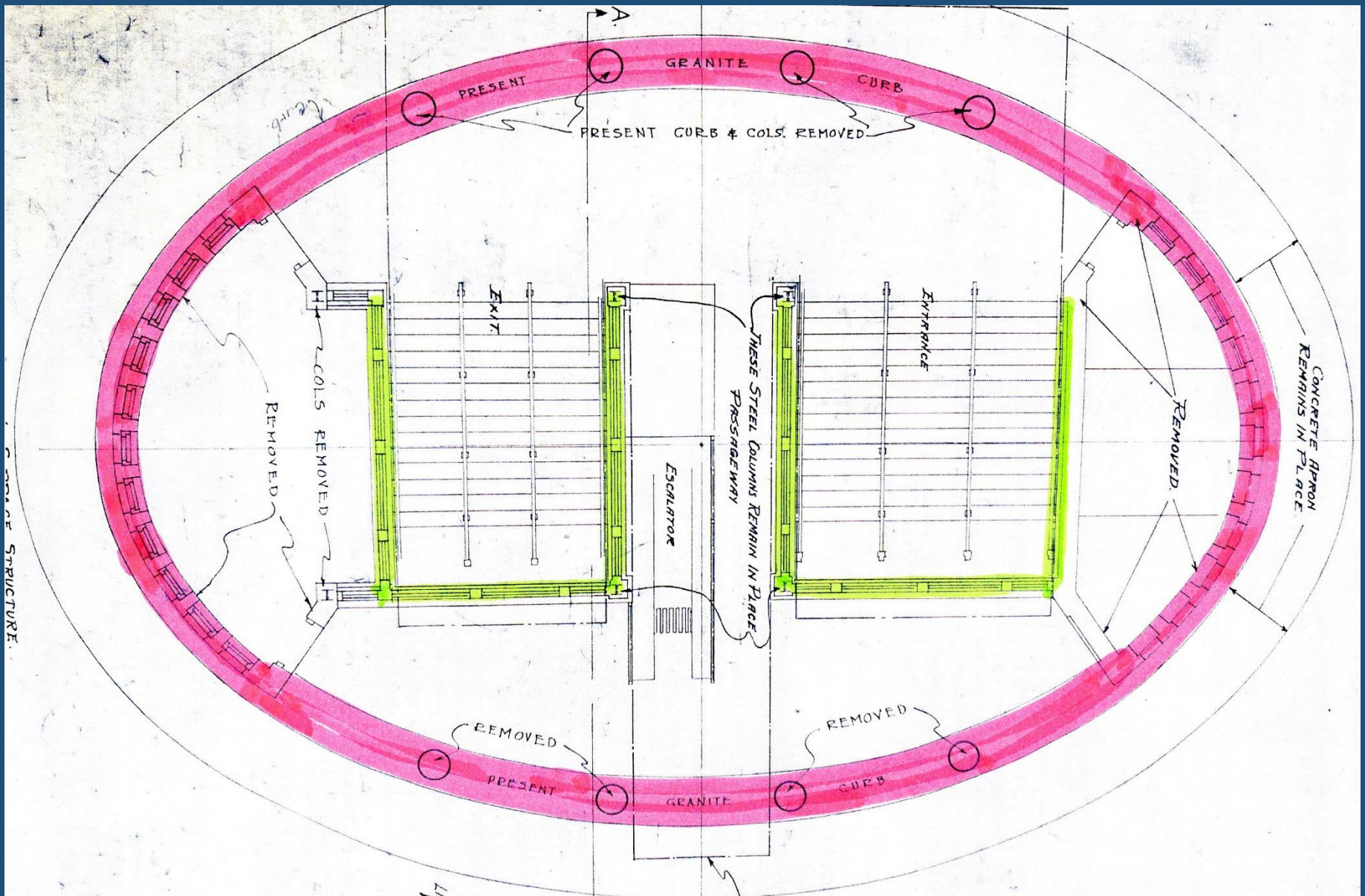


The first headhouse (kiosk), ca. 1925



HARVARD
SQ.

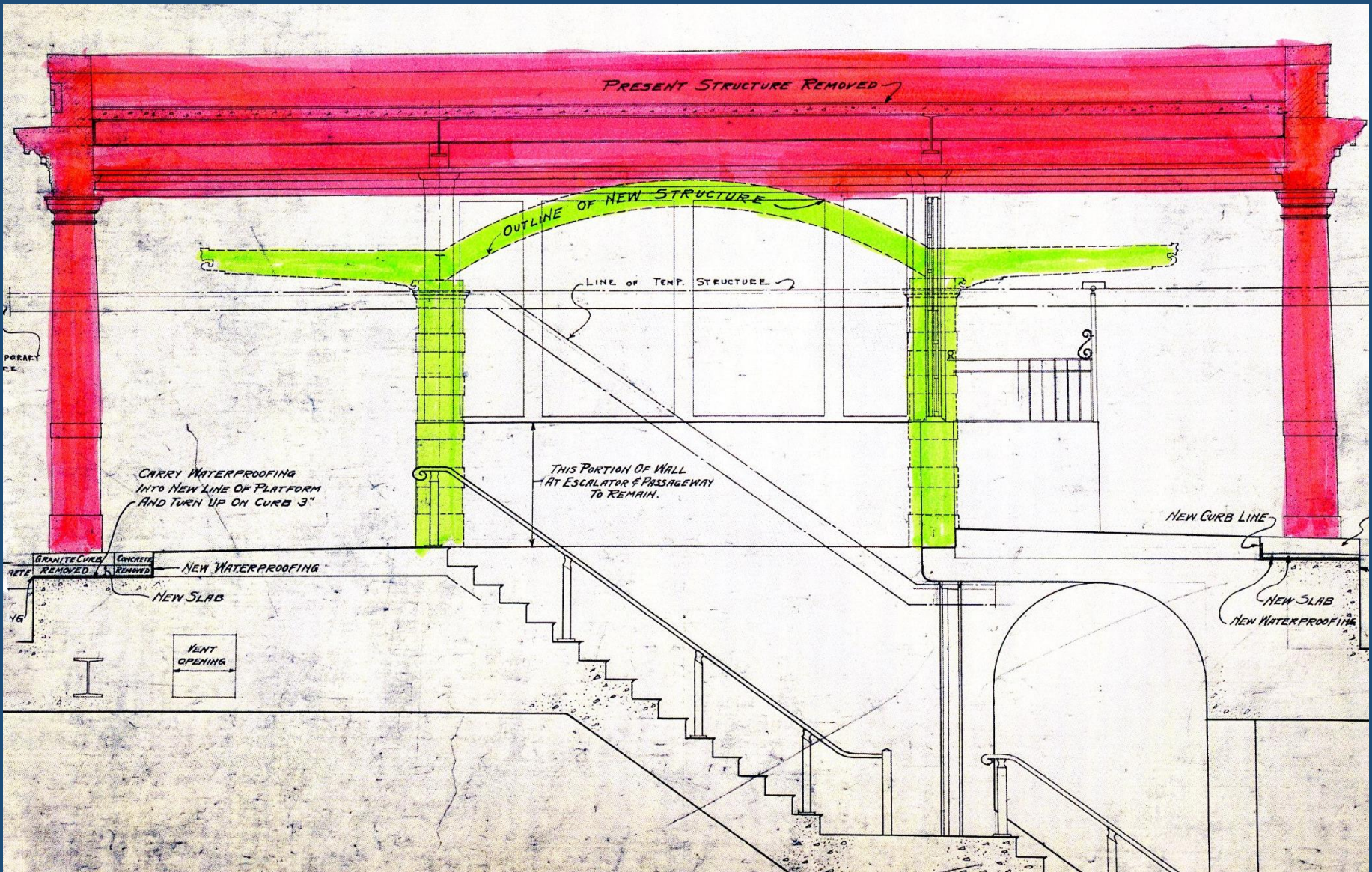
Functional Schematic of Harvard Square Headhouse



Demolition plan, 1927

Green = glass partitions around stairs to remain

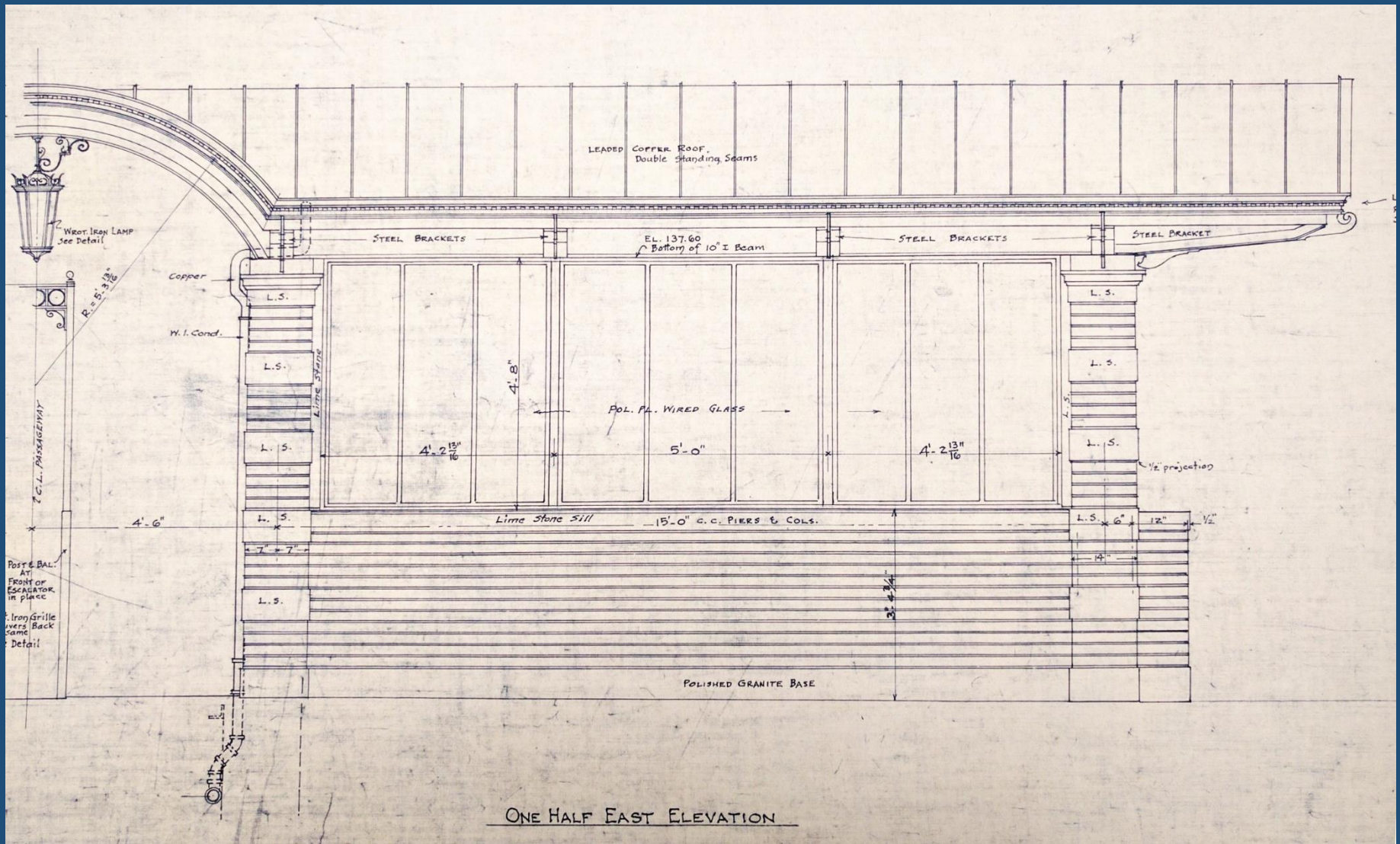
Pink = brick structure to be removed



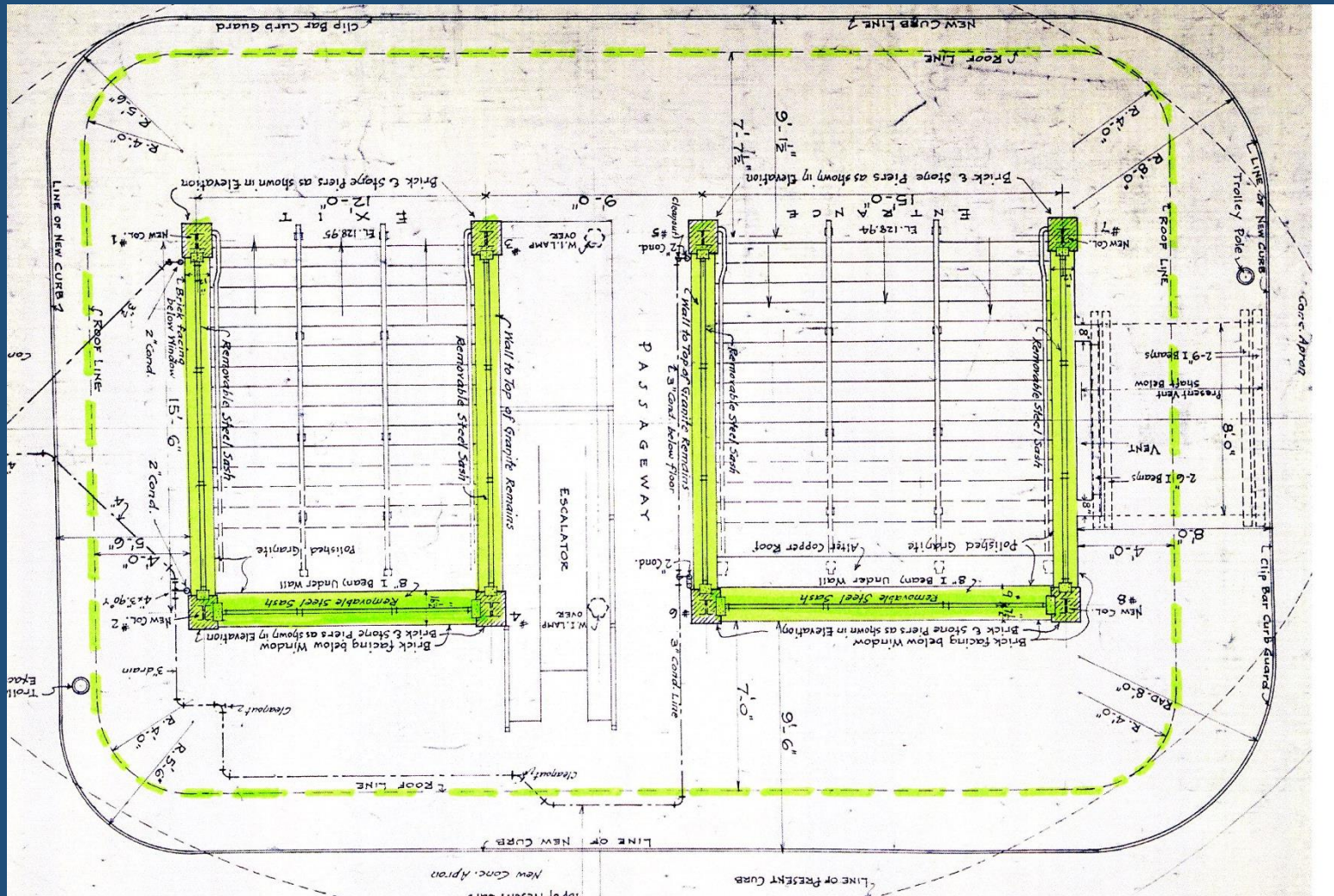
Demolition plan, 1927
Green = outline of new structure
Pink = brick structure to be removed



Harvard Square kiosk, ca. 1928



East Elevation, north side



Plan showing glazed walls around stairs and roof perimeter



Harvard Square kiosk, February 1928



Harvard Square kiosk , ca. 1938



Harvard Square kiosk, ca. 1955



Harvard Square kiosk, 1977



1961 (aerial photo)



1978 (model)



Harvard Square kiosk, west elevation, 1977



Harvard Square kiosk, west elevation, 2016
as remodeled in 1983



Harvard Square kiosk, schematic redesign proposal
Galante Architecture Studio, 2016