

WATERTOWN/CAMBRIDGE  
MULTI-USE PATH CONSTRUCTION (PHASE II)

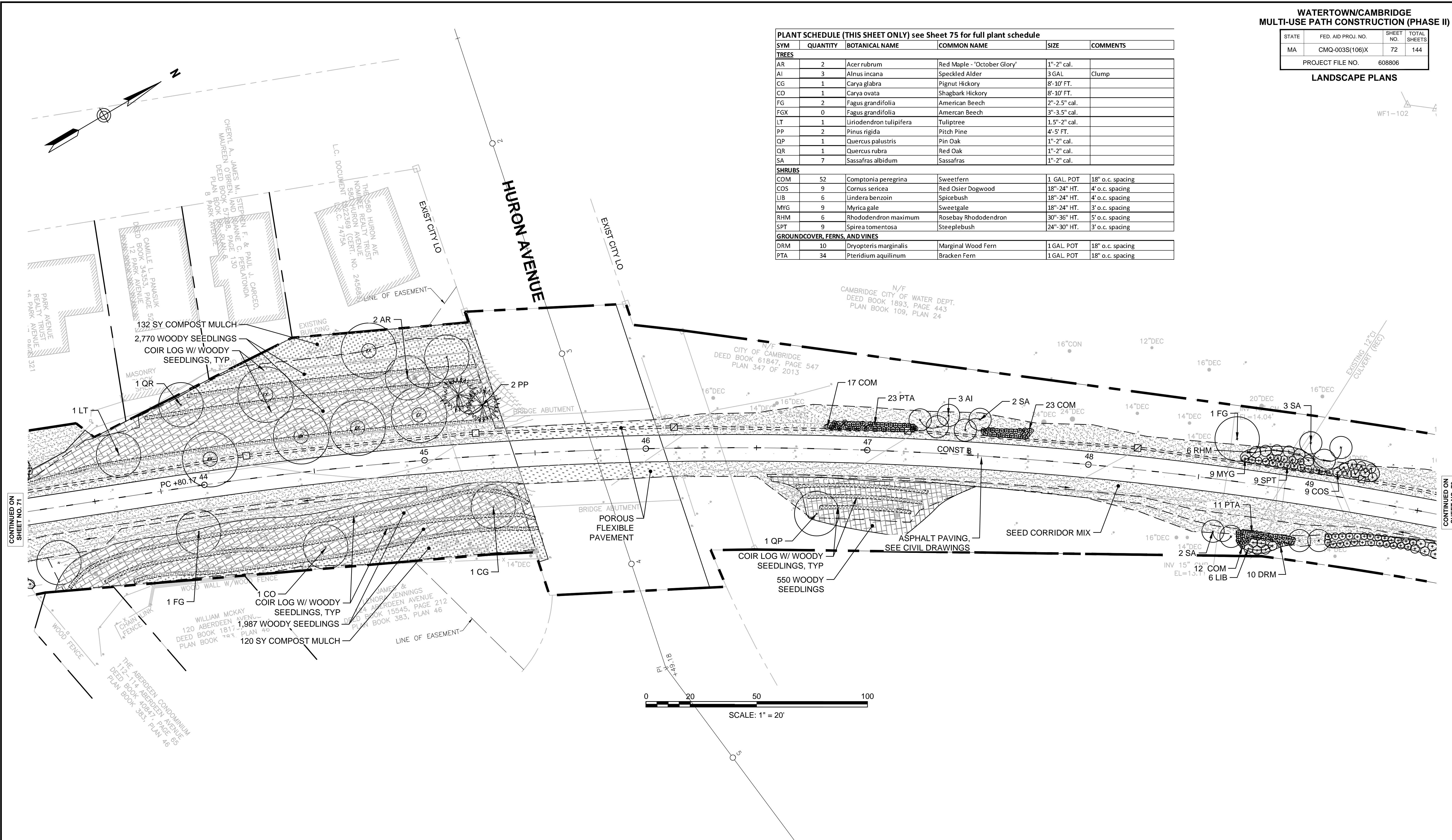
STATE	FED. AID PROJ. NO.	SHEET NO.	TOTAL SHEETS
MA	CMQ-003S(106)X	72	144
PROJECT FILE NO.		608806	

LANDSCAPE PLANS



PLANT SCHEDULE (THIS SHEET ONLY) see Sheet 75 for full plant schedule

SYM	QUANTITY	BOTANICAL NAME	COMMON NAME	SIZE	COMMENTS
<b>TREES</b>					
AR	2	Acer rubrum	Red Maple - 'October Glory'	1"-2" cal.	
AI	3	Alnus incana	Speckled Alder	3 GAL	Clump
CG	1	Carya glabra	Pignut Hickory	8'-10' FT.	
CO	1	Carya ovata	Shagbark Hickory	8'-10' FT.	
FG	2	Fagus grandifolia	American Beech	2"-2.5" cal.	
FGX	0	Fagus grandifolia	American Beech	3"-3.5" cal.	
LT	1	Liriodendron tulipifera	Tuliptree	1.5"-2" cal.	
PP	2	Pinus rigida	Pitch Pine	4'-5' FT.	
QP	1	Quercus palustris	Pin Oak	1"-2" cal.	
QR	1	Quercus rubra	Red Oak	1"-2" cal.	
SA	7	Sassafras albidum	Sassafras	1"-2" cal.	
<b>SHRUBS</b>					
COM	52	Comptonia peregrina	Sweetfern	1 GAL. POT	18" o.c. spacing
COS	9	Cornus sericea	Red Osier Dogwood	18"-24" HT.	4' o.c. spacing
LIB	6	Lindera benzoin	Spicebush	18"-24" HT.	4' o.c. spacing
MYG	9	Myrica gale	Sweetgale	18"-24" HT.	3' o.c. spacing
RHM	6	Rhododendron maximum	Rosebay Rhododendron	30"-36" HT.	5' o.c. spacing
SPT	9	Spiraea tomentosa	Steeplebush	24"-30" HT.	3' o.c. spacing
<b>GROUNDCOVER, FERNS, AND VINES</b>					
DRM	10	Dryopteris marginalis	Marginal Wood Fern	1 GAL. POT	18" o.c. spacing
PTA	34	Pteridium aquilinum	Bracken Fern	1 GAL. POT	18" o.c. spacing



LEGEND

- PROPERTY LINE

--- PROPOSED BIKEWAY

--- LIMIT OF GRADING

== PROPOSED DRAINAGE
- CEMCONC PAVING, SEE CIVIL

POROUS FLEXIBLE PAVING

GRANITE PIER AND CONCRETE UNIT PAVING

GRANITE SETT PAVING WITH FLUSH GRANITE CURB BORDER
- GRANITE TREAD STAIR WITH STAINLESS STEEL HANDRAIL

SITE BENCH W/ CONCRETE PAD

SITE BENCH W/ CONCRETE PAD AND COMPANION SPACE

COIR LOG W/ WOODY SEEDLINGS

ENGRAVED BOULDER
- SEED CORRIDOR MIX

WOODY SEEDLINGS WITH SEED CORRIDOR MIX

COMPOST MULCH AND SEED CORRIDOR MIX

CONTINUOUS MULCH BED

VINE
- EXISTING TREE OF NOTE TO REMAIN AND BE PROTECTED

DECIDUOUS TREE

EVERGREEN TREE

FLOWERING TREE

SHRUBS

NOTE: REFER TO SHEET 75 FOR OVERALL PLANTING SCHEDULE

== □ == LIGHTING HANDHOLE AND CONDUIT

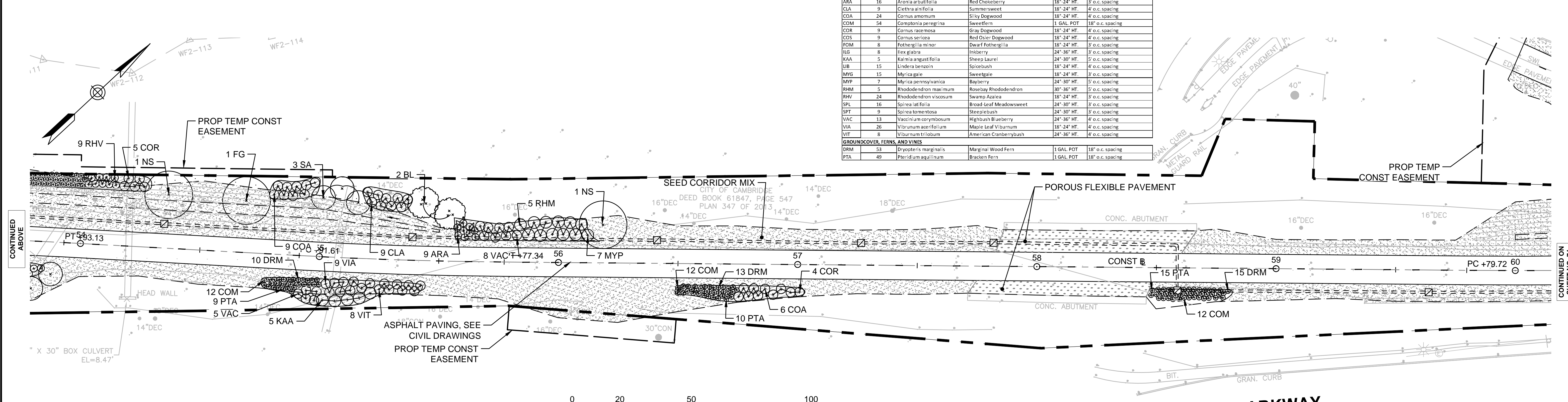
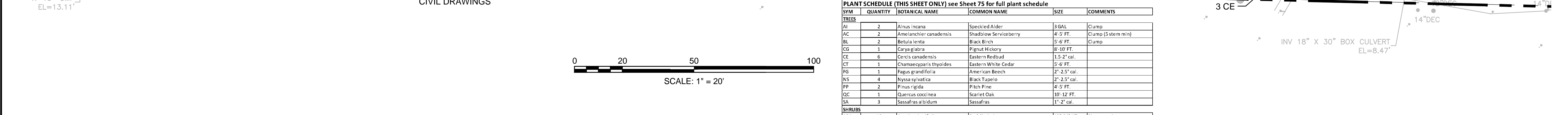
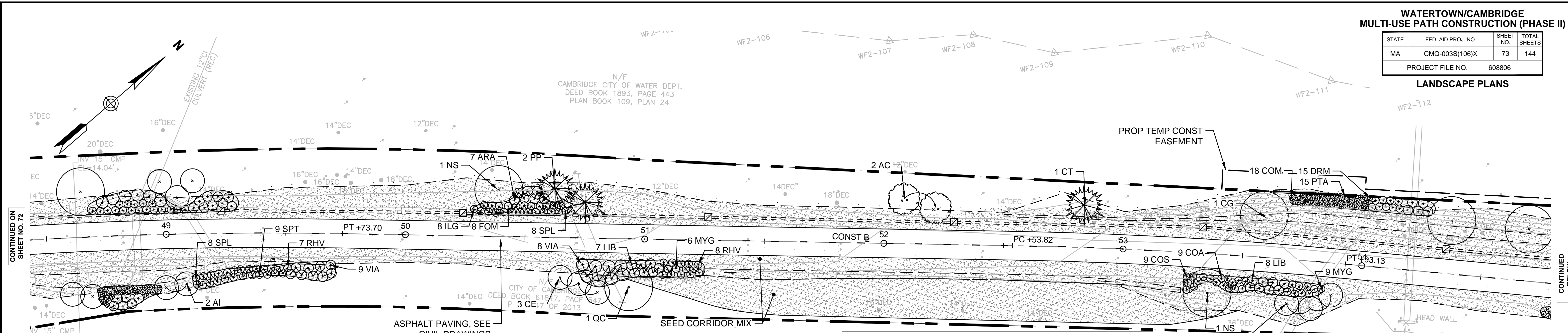
CONTINUED ON SHEET NO. 71

CONTINUED ON SHEET NO. 73

**WATERTOWN/CAMBRIDGE  
MULTI-USE PATH CONSTRUCTION (PHASE II)**

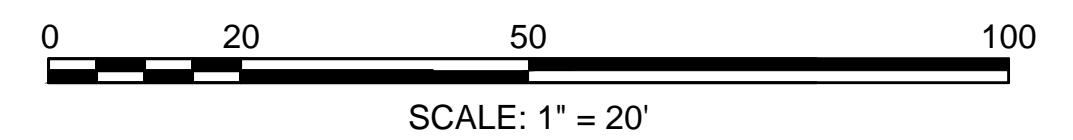
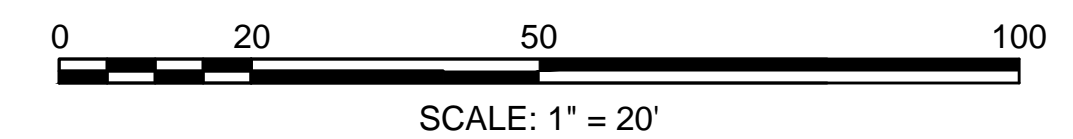
STATE	FED. AID PROJ. NO.	SHEET NO.	TOTAL SHEETS
MA	CMQ-003S(106)X	73	144
PROJECT FILE NO.		608806	

**LANDSCAPE PLANS**



**PLANT SCHEDULE (THIS SHEET ONLY) see Sheet 75 for full plant schedule**

SYM	QUANTITY	BOTANICAL NAME	COMMON NAME	SIZE	COMMENTS
<b>TREES</b>					
AI	2	<i>Alnus incana</i>	Speckled Alder	3 GAL	Cump
AC	2	<i>Amelanchier canadensis</i>	Shadblow Serviceberry	4.5 FT.	Cump (5 stem min)
BL	2	<i>Betula lenta</i>	Black Birch	5-6 FT.	Cump
CG	1	<i>Carya glabra</i>	Pignut Hickory	8-10 FT.	
CE	6	<i>Cercis canadensis</i>	Eastern Redbud	1.5-2" cal.	
CT	1	<i>Chamaecyparis thyoides</i>	Eastern White Cedar	5-6 FT.	
FG	1	<i>Fagus grandifolia</i>	American Beech	2'-2.5" cal.	
NS	4	<i>Nyssa sylvatica</i>	Black Tupelo	2'-2.5" cal.	
PP	2	<i>Pinus rigida</i>	Pitch Pine	4-5 FT.	
QC	1	<i>Quercus coccinea</i>	Scarlet Oak	10-12 FT.	
SA	3	<i>Sassafras albidum</i>	Sassafras	1'-2" cal.	
<b>SHRUBS</b>					
ARA	16	<i>Anonidium arbutifolia</i>	Red Chokeberry	18"-24" HT.	3' o.c. spacing
CLA	9	<i>Celastrus alifolia</i>	Summer Sweet	18"-24" HT.	4' o.c. spacing
COA	24	<i>Cornus amomum</i>	Silky Dogwood	18"-24" HT.	4' o.c. spacing
COM	54	<i>Comptonia peregrina</i>	Sweetfern	1 GAL POT	18" o.c. spacing
COR	9	<i>Cornus racemosa</i>	Gray Dogwood	18"-24" HT.	4' o.c. spacing
COS	9	<i>Cornus sericea</i>	Red Osier Dogwood	18"-24" HT.	4' o.c. spacing
FOM	8	<i>Fothergilla minor</i>	Dwarf Fothergilla	18"-24" HT.	3' o.c. spacing
ILG	8	<i>Ilex glabra</i>	Inkberry	24"-36" HT.	3' o.c. spacing
KAA	5	<i>Kalmia angustifolia</i>	Sheep Laurel	24"-30" HT.	5' o.c. spacing
LIB	15	<i>Lindera benzoin</i>	Spicebush	18"-24" HT.	4' o.c. spacing
MYG	15	<i>Myrica gale</i>	Sweetgale	18"-24" HT.	3' o.c. spacing
MYP	7	<i>Myrica pennsylvanica</i>	Bayberry	24"-30" HT.	5' o.c. spacing
RHM	5	<i>Rhododendron maximum</i>	Rosebay Rhododendron	30"-36" HT.	5' o.c. spacing
RHV	24	<i>Rhododendron viscosum</i>	Swamp Azalea	18"-24" HT.	3' o.c. spacing
SPL	16	<i>Spiraea latifolia</i>	Broad-Leaf Meadowsweet	24"-30" HT.	3' o.c. spacing
SPT	9	<i>Sorirea tomentosa</i>	Steeplesbush	24"-30" HT.	3' o.c. spacing
VAC	13	<i>Vaccinium corymbosum</i>	Highbush Blueberry	24"-36" HT.	4' o.c. spacing
VIA	26	<i>Viburnum acerifolium</i>	Maple Leaf Viburnum	18"-24" HT.	4' o.c. spacing
VIT	8	<i>Viburnum trilobum</i>	American Cranberrybush	24"-36" HT.	4' o.c. spacing
<b>GROUNDCOVER, FERNS, AND VINES</b>					
DRM	53	<i>Dryopteris marginalis</i>	Marginal Wood Fern	1 GAL POT	18" o.c. spacing
PTA	49	<i>Pteridium aquilinum</i>	Bracken Fern	1 GAL POT	18" o.c. spacing



**LEGEND**

PROPERTY LINE	CEMCONC PAVING, SEE CIVIL	GRANITE TREAD STAIR WITH STAINLESS STEEL HANDRAIL	SEED CORRIDOR MIX	EXISTING TREE OF NOTE TO REMAIN AND BE PROTECTED
PROPOSED BIKEWAY	POROUS FLEXIBLE PAVING	SITE BENCH W/ CONCRETE PAD	WOODY SEEDLINGS WITH SEED CORRIDOR MIX	DECIDUOUS TREE
LIMIT OF GRADING	GRANITE PIER AND CONCRETE UNIT PAVING	SITE BENCH W/ CONCRETE PAD AND COMPANION SPACE	COMPOST MULCH AND SEED CORRIDOR MIX	EVERGREEN TREE
PROPOSED DRAINAGE	GRANITE SETT PAVING WITH FLUSH GRANITE CURB BORDER	COIR LOG W/ WOODY SEEDLINGS	CONTINUOUS MULCH BED	FLOWERING TREE
	ENGRAVED BOULDER	VINE	SHRUBS	LIGHTING HANDHOLE AND CONDUIT

NOTE: REFER TO SHEET 75 FOR OVERALL PLANTING SCHEDULE

== □ == LIGHTING HANDHOLE AND CONDUIT

CONTINUED ON SHEET NO. 72

CONTINUED ABOVE

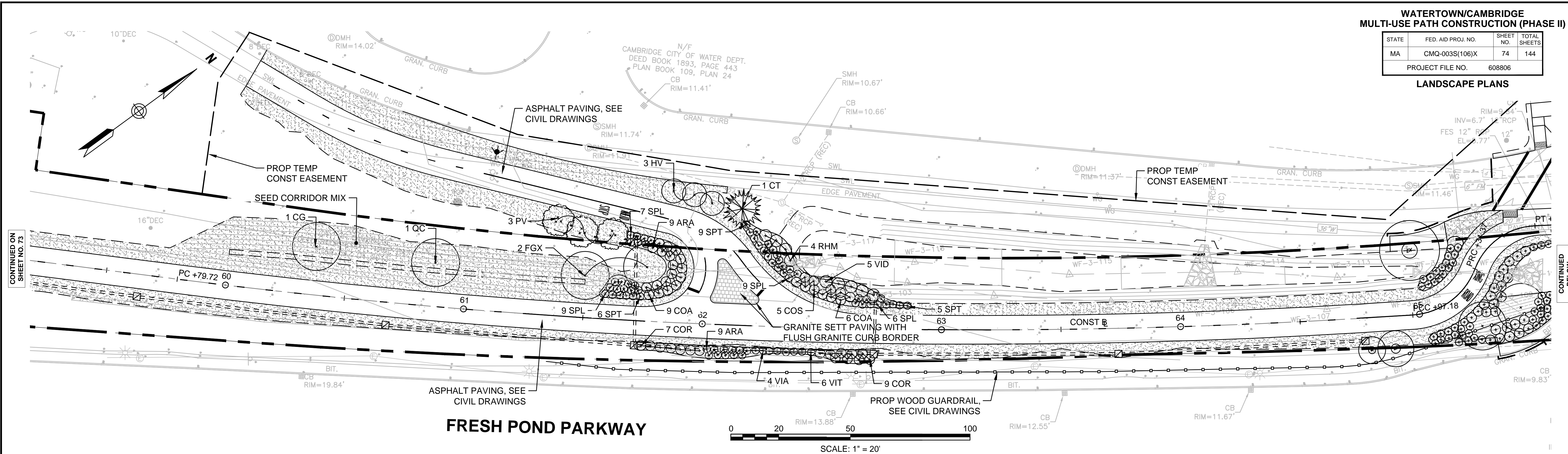
CONTINUED BELOW

CONTINUED ON SHEET NO. 74

**WATERTOWN/CAMBRIDGE  
MULTI-USE PATH CONSTRUCTION (PHASE II)**

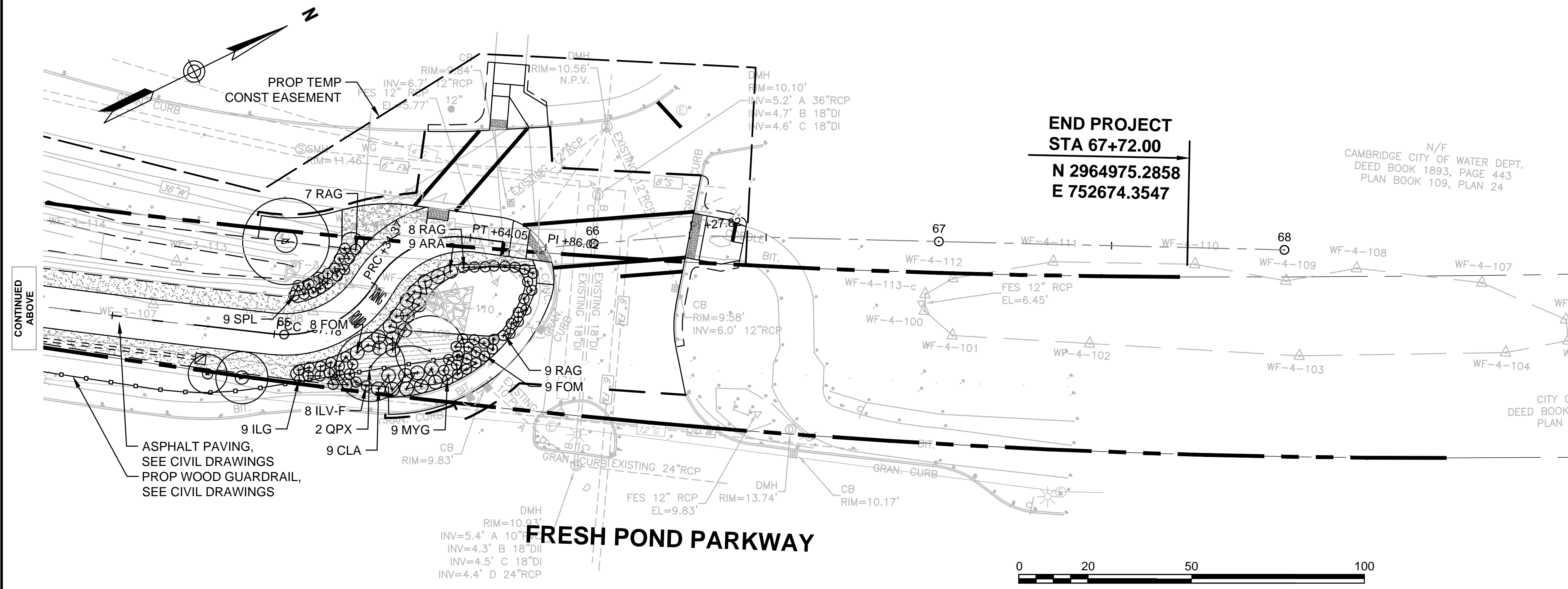
STATE	FED. AID PROJ. NO.	SHEET NO.	TOTAL SHEETS
MA	CMQ-0035(106)X	74	144
PROJECT FILE NO.		608806	

**LANDSCAPE PLANS**



CONTINUED ON  
SHEET NO. 73

CONTINUED  
BELOW



**END PROJECT  
STA 67+72.00  
N 2964975.2858  
E 752674.3547**

**PLANT SCHEDULE (THIS SHEET ONLY) see Sheet 75 for full plant schedule**

SYM	QUANTITY	BOTANICAL NAME	COMMON NAME	SIZE	COMMENTS
<b>TREES</b>					
CG	1	Carya glabra	Pignut Hickory	8'-10' FT.	
CT	1	Chamaecyparis thyoides	Eastern White Cedar	5'-6' FT.	
FGX	2	Fagus grandifolia	American Beech	3"-3.5" cal.	
HV	3	Hamamelis virginiana	Common Witchhazel	3'-4' FT.	Clump
PV	3	Prunus virginiana 'Shubert'	Shubert' Choke Cherry	1.5"-2" cal.	
QC	1	Quercus coccinea	Scarlet Oak	10'-12' FT.	
QPX	2	Quercus palustris	Pin Oak	2"-2.5" cal.	
<b>SHRUBS</b>					
ARA	27	Aronia arbutifolia	Red Chokeberry	18"-24" HT.	3' o.c. spacing
CLA	9	Clethra alnifolia	Summersweet	18"-24" HT.	4' o.c. spacing
COA	15	Cornus amomum	Silky Dogwood	18"-24" HT.	4' o.c. spacing
COR	16	Cornus racemosa	Gray Dogwood	18"-24" HT.	4' o.c. spacing
COS	5	Cornus sericea	Red Osier Dogwood	18"-24" HT.	4' o.c. spacing
FOM	17	Fothergilla minor	Dwarf Fothergilla	18"-24" HT.	3' o.c. spacing
ILG	9	Ilex glabra	Inkberry	24"-36" HT.	3' o.c. spacing
ILV-f	8	Ilex verticillata (female)	Winterberry (female)	18"-24" HT.	3' o.c. spacing
MYG	9	Myrica gale	Sweetgale	18"-24" HT.	3' o.c. spacing
RAG	24	Rhus aromatica 'Gro-Low'	Gro-Low Fragrant Sumac	18"-24" HT.	4' o.c. spacing
RHM	4	Rhododendron maximum	Rosebay Rhododendron	30"-36" HT.	5' o.c. spacing
SPL	40	Spirea latifolia	Broad-Leaf Meadowsweet	24"-30" HT.	3' o.c. spacing
SPT	20	Spirea tomentosa	Steeplebush	24"-30" HT.	3' o.c. spacing
VIA	4	Viburnum acerifolium	Maple Leaf Viburnum	18"-24" HT.	4' o.c. spacing
VID	5	Viburnum dentatum	Arrowwood Viburnum	24"-30" HT.	5' o.c. spacing
VIT	6	Viburnum trilobum	American Cranberrybush	24"-36" HT.	4' o.c. spacing

**LEGEND**

- PROPERTY LINE
- PROPOSED BIKEWAY
- LIMIT OF GRADING
- PROPOSED DRAINAGE
- CEMCONC PAVING, SEE CIVIL
- POROUS FLEXIBLE PAVING
- GRANITE PIER AND CONCRETE UNIT PAVING
- GRANITE SETT PAVING WITH FLUSH GRANITE CURB BORDER
- GRANITE TREAD STAIR WITH STAINLESS STEEL HANDRAIL
- SITE BENCH W/ CONCRETE PAD
- SITE BENCH W/ CONCRETE PAD AND COMPANION SPACE
- COIR LOG W/ WOODY SEEDLINGS
- ENGRAVED BOULDER
- SEED CORRIDOR MIX
- WOODY SEEDLINGS WITH SEED CORRIDOR MIX
- COMPOST MULCH AND SEED CORRIDOR MIX
- CONTINUOUS MULCH BED
- VINE
- EXISTING TREE OF NOTE TO REMAIN AND BE PROTECTED
- DECIDUOUS TREE
- EVERGREEN TREE
- FLOWERING TREE
- SHRUBS

**NOTE: REFER TO SHEET 75 FOR OVERALL PLANTING SCHEDULE**

== □ == LIGHTING HANDHOLE AND CONDUIT

WATERTOWN/CAMBRIDGE  
MULTI-USE PATH CONSTRUCTION (PHASE II)

STATE	FED. AID PROJ. NO.	SHEET NO.	TOTAL SHEETS
MA	CMQ-003S(106)X	75	144
PROJECT FILE NO.		608806	

LANDSCAPE PLANS

PLANT SCHEDULE				
QTY	BOTANICAL NAME	COMMON NAME	SIZE	COMMENTS
<b>WOODY SEEDLINGS for upland slope stabilization</b>				
598	Aronia arbutifolia	Red Chokeberry	5" Seedling	18" o.c. spacing, container
598	Comptonia peregrina	Sweetfern	5" Seedling	18" o.c. spacing, container
598	Cornus racemosa	Grey Dogwood	5" Seedling	18" o.c. spacing, container
598	Hamamelis virginiana	Common Witchhazel	5" Seedling	18" o.c. spacing, container
598	Myrica pensylvanica	Bayberry	5" Seedling	18" o.c. spacing, container
598	Rhus aromatica 'Gro-low'	Gro-low Fragrant Sumac	5" Seedling	18" o.c. spacing, container
598	Viburnum acerifolium	Mapleleaf Viburnum	5" Seedling	18" o.c. spacing, container
<b>SEED MIXES</b>				
	Seed Corridor Mix			Refer to spec.

PLANT SCHEDULE						PLANT QUANTITIES BY SHEET											
SYM	PROJECT QUANTITY	BOTANICAL NAME	COMMON NAME	SIZE	COMMENTS	64	65	66	67	68	69	70	71	72	73	74	
<b>TREES</b>																	
AR	5	Acer rubrum	Red Maple - 'October Glory'	1"-2" cal.								1	1	1	2		
ARX	2	Acer rubrum	Red Maple - 'October Glory'	3"-3.5" cal.		2											
AI	5	Alnus incana	Speckled Alder	3 GAL	Clump									3	2		
AC	7	Amelanchier canadensis	Shadblow Serviceberry	4'-5' FT.	Clump (5 stem min)	1	2					2			2		
BA	9	Betula alleghaniensis	Yellow Birch	5'-6' FT.	Clump		2	3		2				2			
BAX	3	Betula alleghaniensis	Yellow Birch	8'-10' FT.	Clump	3											
BL	6	Betula lenta	Black Birch	5'-6' FT.	Clump		2	2							2		
BLX	2	Betula lenta	Black Birch	8'-10' FT.	Clump	2											
CC	4	Carpinus caroliniana	American Hornbeam	8'-10' FT.		1				3							
CG	4	Carya glabra	Pignut Hickory	8'-10' FT.					1					1	1	1	
CO	7	Carya ovata	Shagbark Hickory	8'-10' FT.		1	1	2	1		1			1			
CE	13	Cercis canadensis	Eastern Redbud	1.5"-2" cal.		3					2	2			6		
CT	19	Chamaecyparis thuyoides	Eastern White Cedar	5'-6' FT.			7	2	3			5			1	1	
CR	3	Cornus x rutgersensis	Stellar Pink Dogwood	1.5"-2" cal.			3										
FG	8	Fagus grandifolia	American Beech	2"-2.5" cal.					1	2			2		2	1	
FGX	3	Fagus grandifolia	American Beech	3"-3.5" cal.							1					2	
HV	12	Hamamelis virginiana	Common Witchhazel	3'-4' FT.	Clump					7	2					3	
IO-f	11	Ilex opaca (female)	American Holly (female)	6'-7' FT.				2	2	2			4	1			
IO-m	2	Ilex opaca (male)	American Holly (male)	6'-7' FT.					1					1			
JV	7	Juniperus virginiana	Eastern Red Cedar	4'-5' FT.		3		2						2			
LT	5	Liriodendron tulipifera	Tuliptree	1.5"-2" cal.		2							1	1	1		
LTX	2	Liriodendron tulipifera	Tuliptree	3"-3.5" cal.						2							
NS	10	Nyssa sylvatica	Black Tupelo	2"-2.5" cal.		2			2				1	1		4	
OV	4	Ostrya virginiana	Hop Hornbeam	8'-10' FT.		2		1					1				
PG	11	Picea glauca	White Spruce	5'-6' FT.		2	3	2						2	2		
PGX	3	Picea glauca	White Spruce	7'-8' FT.		3											
PM	29	Picea mariana	Black Spruce	5'-6' FT.		4	3	2	3		9	4	4				
PR	12	Pinus resinosa	Red Pine	5'-6' FT.		2	2	2	4				3	1			
PPX	2	Pinus rigida	Pitch Pine	7'-8' FT.		2											
PP	13	Pinus rigida	Pitch Pine	4'-5' FT.			3	2				2	2	2	2		
PS	15	Pinus strobus	Eastern White Pine	5'-6' FT.			4		3	2		6					
PV	5	Prunus virginiana 'Shubert'	Shubert' Choke Cherry	1.5"-2" cal.			2									3	
QA	1	Quercus alba	White Oak	1.5"-2" cal.										1			
QB	5	Quercus bicolor	Swamp White Oak	1.5"-2" cal.		1	1		1					1			
QBX	1	Quercus bicolor	Swamp White Oak	2"-2.5" cal.							1						
QC	5	Quercus coccinea	Scarlet Oak	10'-12' FT.			1		1				1			1	
QCX	1	Quercus coccinea	Scarlet Oak	2"-2.5" cal.						1							
QP	3	Quercus palustris	Pin Oak	1"-2" cal.		1							1	1			
QPX	5	Quercus palustris	Pin Oak	2"-2.5" cal.						3						2	
QR	1	Quercus rubra	Red Oak	1"-2" cal.										1			
QRX	4	Quercus rubra	Red Oak	2"-2.5" cal.		2				2							
SA	10	Sassafras albidum	Sassafras	1"-2" cal.										7	3		
Total all Trees						279	37	36	21	26	24	18	37	21	21	25	13

**SHRUBS**

Handle Moist Conditions																	
SYM	PROJECT QUANTITY	BOTANICAL NAME	COMMON NAME	SIZE	COMMENTS	64	65	66	67	68	69	70	71	72	73	74	
ARA	105	Aronia arbutifolia	Red Chokeberry	18"-24" HT.	3' o.c. spacing	22			9				8	23		16	27
CLA	31	Clethra alnifolia	Summersweet	18"-24" HT.	4' o.c. spacing			5						8			9
COA	58	Cornus amomum	Silky Dogwood	18"-24" HT.	4' o.c. spacing	3								16			15
COR	60	Cornus racemosa	Gray Dogwood	18"-24" HT.	4' o.c. spacing			5						30			16
COS	49	Cornus sericea	Red Osier Dogwood	18"-24" HT.	4' o.c. spacing	8				4				14		9	5
FOM	89	Fothergilla minor	Dwarf Fothergilla	18"-24" HT.	3' o.c. spacing	20					7	8	29				17
ILG	55	Ilex glabra	Inkberry	24"-36" HT.	3' o.c. spacing			14				7	17				9
ILV-f	48	Ilex verticillata (female)	Winterberry (female)	18"-24" HT.	3' o.c. spacing						27			13			8
ILV-m	4	Ilex verticillata (male)	Winterberry (male)	18"-24" HT.	3' o.c. spacing						2			2			
LJB	33	Lindera benzoin	Spicebush	18"-24" HT.	4' o.c. spacing			7						5	6		15
RHV	70	Rhododendron viscosum	Swamp Azalea	18"-24" HT.	3' o.c. spacing							31		15			24
SPL	99	Spirea latifolia	Broad-Leaf Meadowsweet	24"-30" HT.	3' o.c. spacing							23	13	7			40
SPT	74	Spirea tomentosa	Steeplebush	24"-30" HT.	3' o.c. spacing			8						15	13	9	20
VAC	45	Vaccinium corymbosum	Highbush Blueberry	24"-36" HT.	4' o.c. spacing							4	7	21			13
VID	21	Viburnum dentatum	Arrowwood Viburnum	24"-30" HT.	5' o.c. spacing					5			5	6			5

**Handle Drier Conditions**

SYM	PROJECT QUANTITY	BOTANICAL NAME	COMMON NAME	SIZE	COMMENTS	64	65	66	67	68	69	70	71	72	73	74	
CAF	65	Calycanthus floridus	Carolina Allspice	24"-30" HT.	4' o.c. spacing							22	23	20			
COM	114	Comptonia peregrina	Sweetfern	1 GAL. POT	18" o.c. spacing								8		52	54	
KAL	31	Kalmia latifolia	Mountain Laurel	24"-30" HT.	5' o.c. spacing							13	18				
KAA	31	Kalmia angustifolia	Sheep Laurel	24"-30" HT.	5' o.c. spacing								20	6		5	
MYG	75	Myrica gale	Sweetgale	18"-24" HT.	3' o.c. spacing						12			30	9	15	
MYP	65	Myrica pensylvanica	Bayberry	24"-30" HT.	5' o.c. spacing	9								34	15	7	
RHM	58	Rhododendron maximum	Rosebay Rhododendron	30"-36" HT.	5' o.c. spacing								22	21	6	5	
RAG	76	Rhus aromatica 'Gro-Low'	Gro-Low Fragrant Sumac	18"-24" HT.	4' o.c. spacing	27				16	9					24	
VIA	59	Viburnum acerifolium	Maple Leaf Viburnum	18"-24" HT.	4' o.c. spacing			5					8		16	26	
VIT	50	Viburnum trilobum	American Cranberrybush	24"-36" HT.	4' o.c. spacing								15	6	15	8	
Total						1465	89	0	53	0	25	180	264	265	91	280	218

**GROUND COVER, FERNS, AND VINES**

SYM	PROJECT QUANTITY	BOTANICAL NAME	COMMON NAME	SIZE	COMMENTS	64	65	66	67	68	69	70	71	72	73	74	
DRM	87	Dryopteris marginalis	Marginal Wood Fern	1 GAL. POT	18" o.c. spacing									24	10	53	
JCC	79	Juniper conferta	Shore Juniper	2 GAL. POT	24" o.c. spacing	40		39									
HAP	20	Hydrangea anomala petiolaris	Climbing Hydrangea	1 GAL. POT	As Shown						20						
PTA	83	Pteridium aquilinum	Bracken Fern	1 GAL. POT	18" o.c. spacing										34	49	
Total						269	40	0	39	0	0	20	0	24	44	102	0