

Gold Star Mothers Park (Gore Street Park) Court Area Renovation

Community Meeting #2
October 5, 2023

City of Cambridge



PROJECT TEAM

CITY OF CAMBRIDGE

Gary Chan Neighborhood Planner,
Community Development

Lillian Hsu Director of Public Art,
Cambridge Arts Council

Kevin Beuttell Supervising Landscape
Architect, Public Works

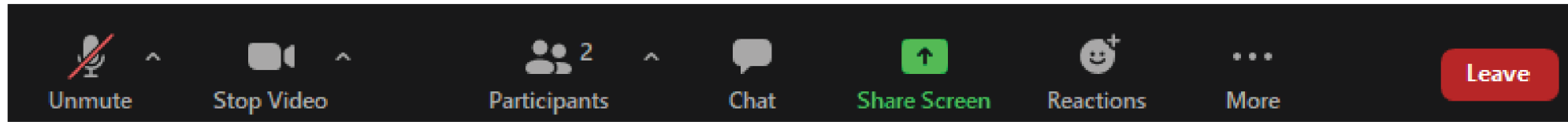
WESTON & SAMPSON

Cassie Bethoney Project Manager and
Landscape Architect

Yuanbin Wang Landscape Designer

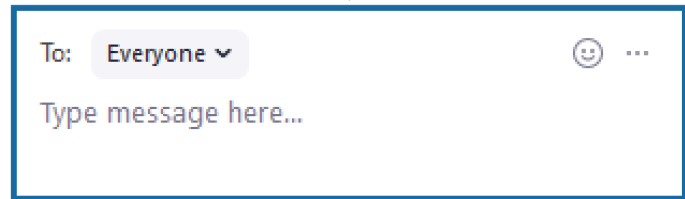


Using Zoom

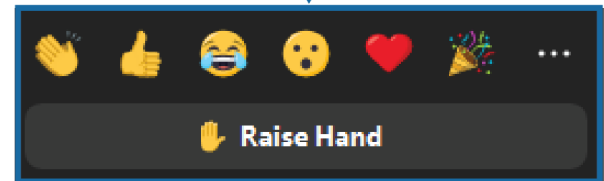


↑ ↑
Please leave your **audio muted** and video on (if comfortable)

↑
Click to open the **Chat** box. This will allow you to chat with the Hosts and Participants.



↑
Click to open the **Reactions** box. This will allow you to give nonverbal feedback.



For Zoom-related questions reach out to Kevin Beuttell via chat or email kbeuttell@cambridgema.gov



If you're having connectivity issues, call in at
Phone Number: (929) 436-2866
Meeting ID: 897 9321 5730



We're recording!

AGENDA

- PROJECT INTRODUCTION
- OPEN SPACE AND PROJECT GOALS
- WHAT WE'VE HEARD SO FAR
- **REFINED DESIGN CONCEPTS**
- DISCUSSION



Project Area

- Project focus is the paved court area
- Potential for modest improvements (e.g., planting, trees, seating) for entry from Winter Street and planted north of courts

Complement existing park features/uses:

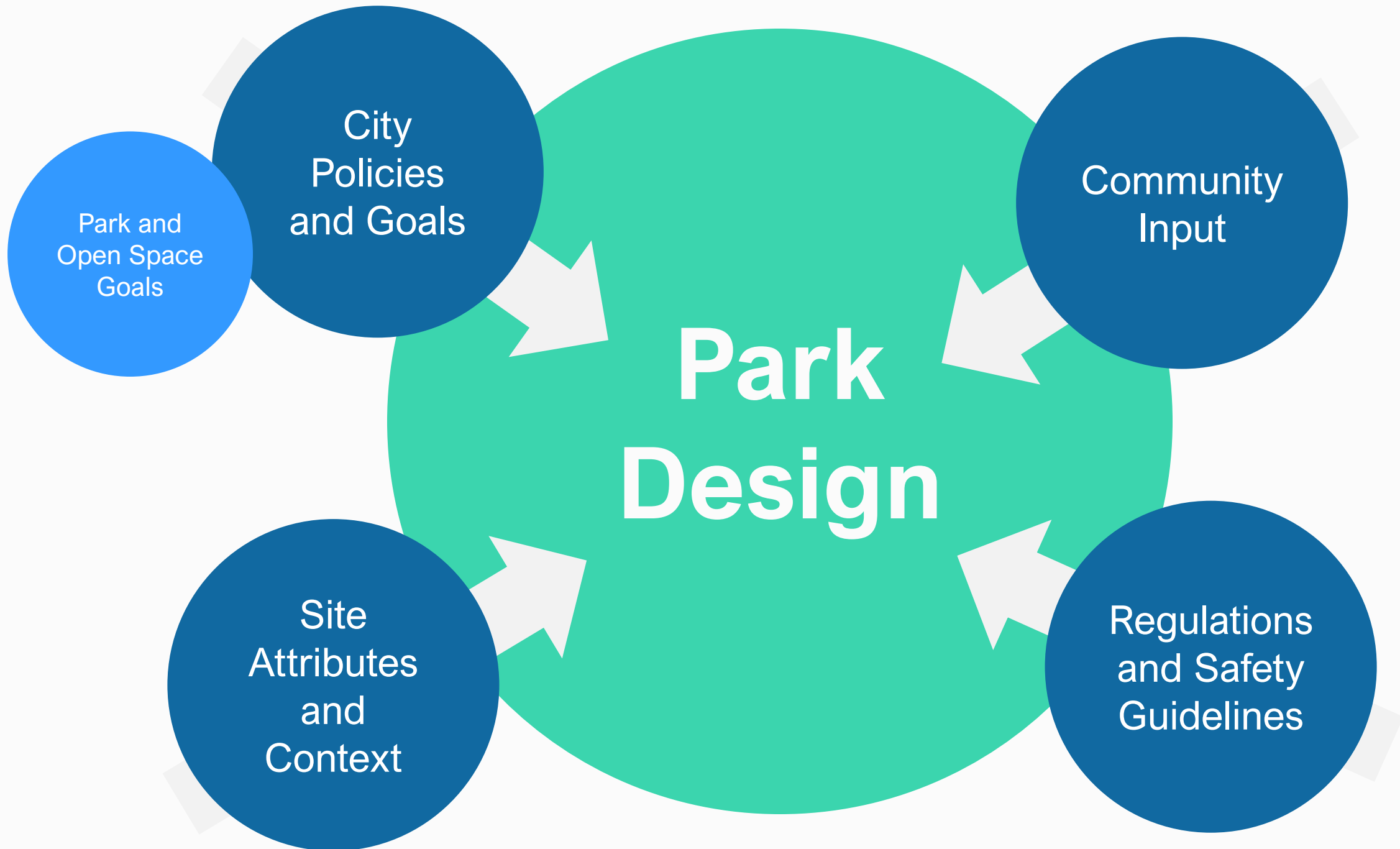
- Playground
- Athletic/passive use field
- Morning shared use off leash dog hours
- Seating (standalone benches and tables)



Anticipated Project Schedule



Open Space and Project Goals



Project Goals

- Enhance visibility and activate the space
- Clarify service access through the space
- Ensure seamless connections to larger Gold Star Mother's Park area
- Prioritize accessibility and inclusion
- Protect and enhance existing tree canopy and buffer planting
- Ensure sustainable and resilient design
- Integrate public art into site design
- Confirm the programming aligns with community needs



What We've Heard So Far

40%

Use the basketball court area regularly

33%

Use the park regularly, but rarely or never use the basketball court area

20%

Pass through the park regularly, but do not often stay and use it

Themes:

- Basketball courts need renovation
- Need more seating/picnicking and trees for shading, or add canopy structure
- Consider noise impacts on nearby residences
- Explore multi-sports courts
- Remove unused sports equipment

What We've Heard So Far








Themes:

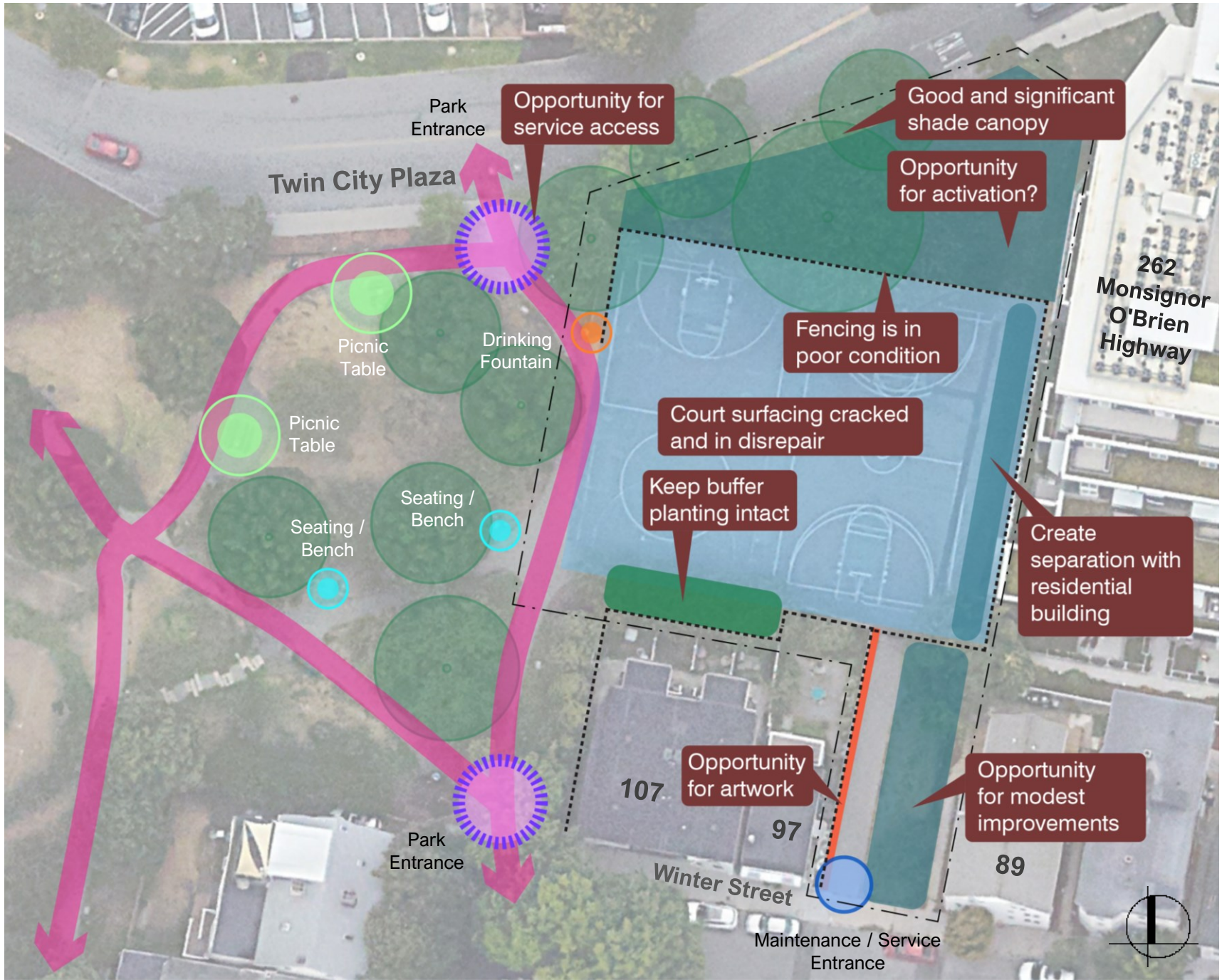
- Noise impacts on nearby residences
- Making this space feel like a part of the park
- Interest in exploring a fitness loop path
- Plantings, greening
- **Keep in mind existing challenges**
 - Cleanliness and upkeep
 - Late-night use



Site Analysis

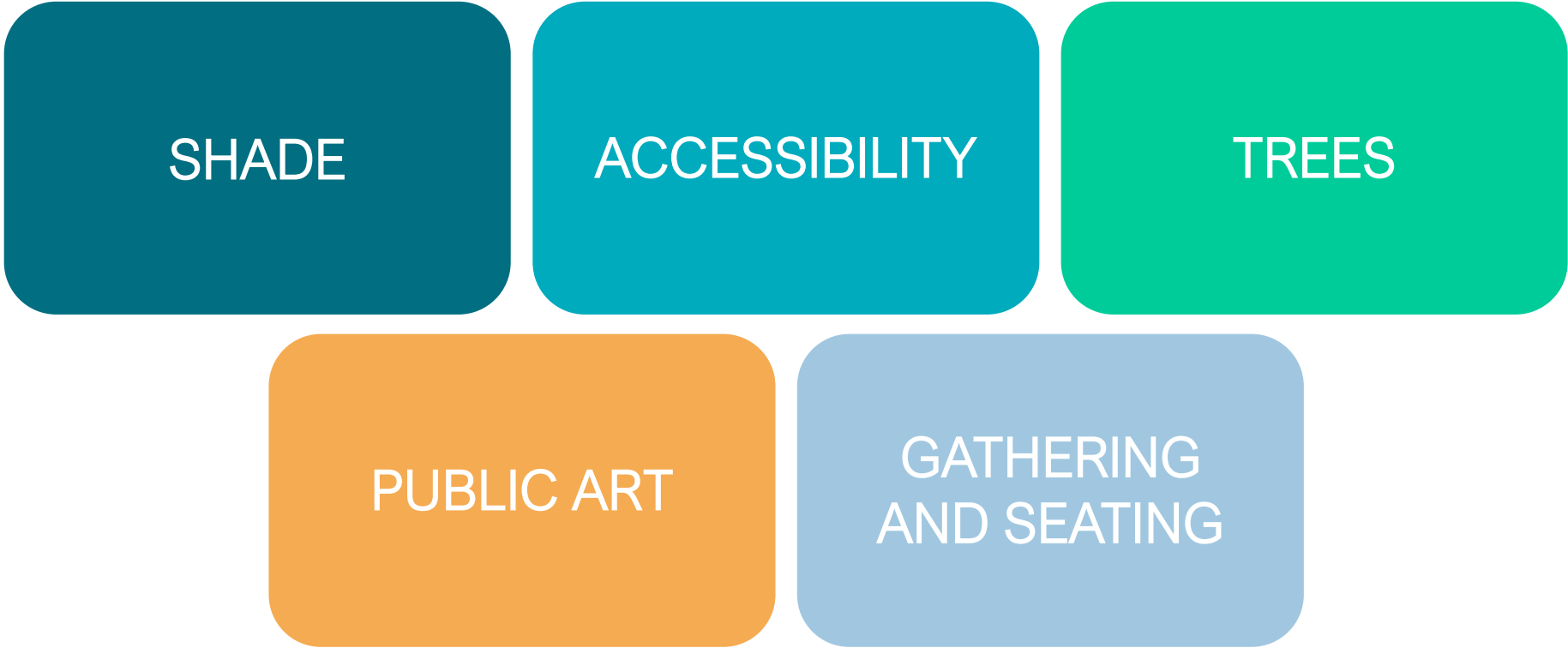
LEGEND

-  Major Circulation Routes
-  Existing Fence
-  Picnic Table
-  Seating / Bench
-  Drinking Fountain
-  Main Entrance
-  Maintenance / Service Entrance



Refined Design Concepts

Conceptual Design “Givens”

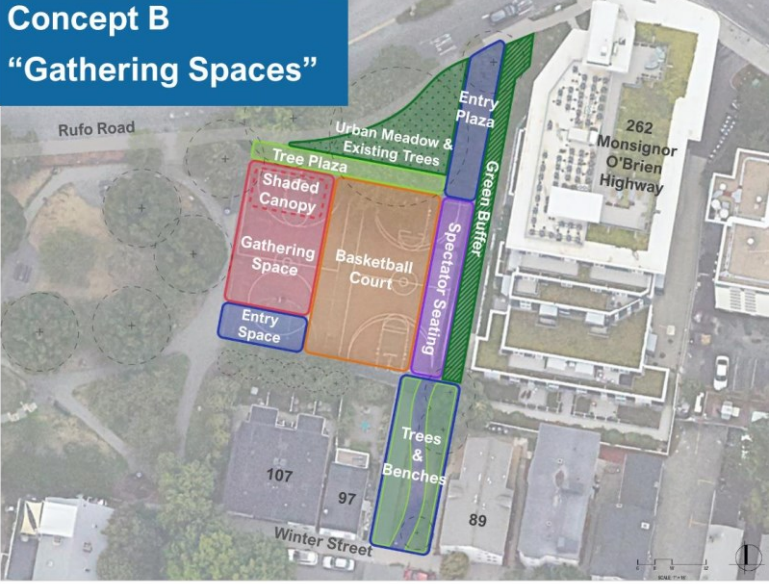


Conceptual Ideas – Previous Options

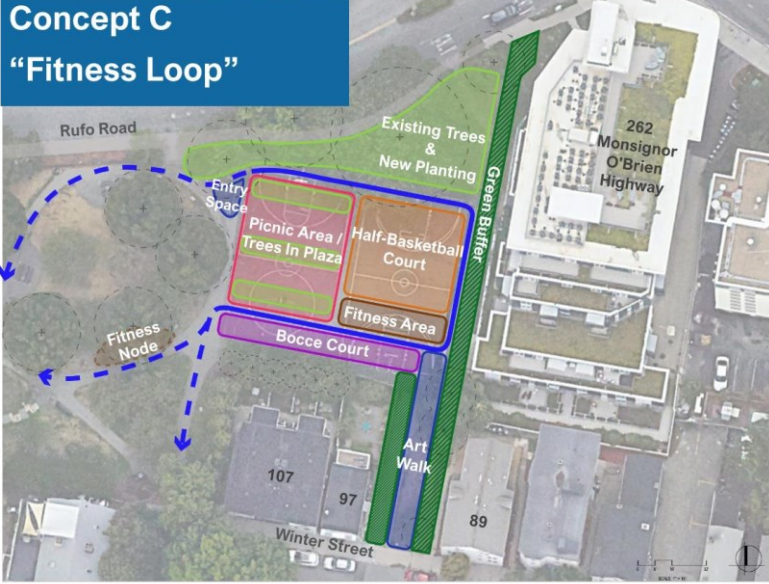
Concept A
“Social Exercise”



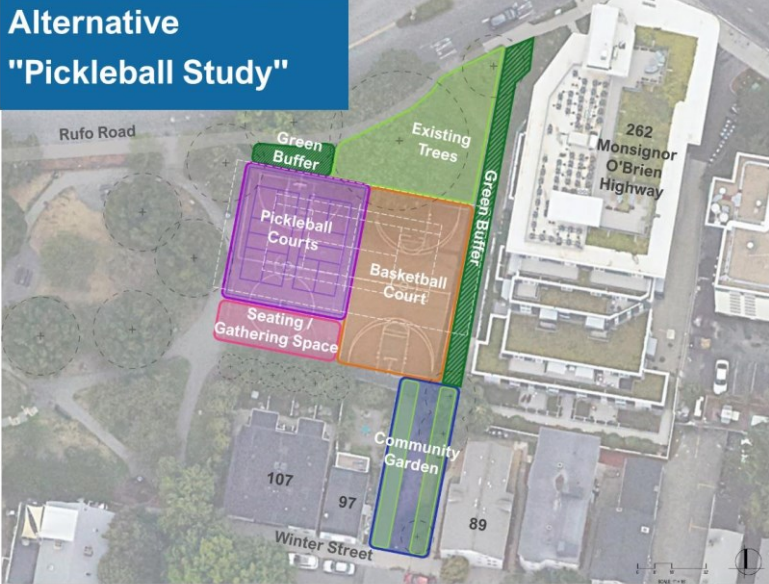
Concept B
“Gathering Spaces”



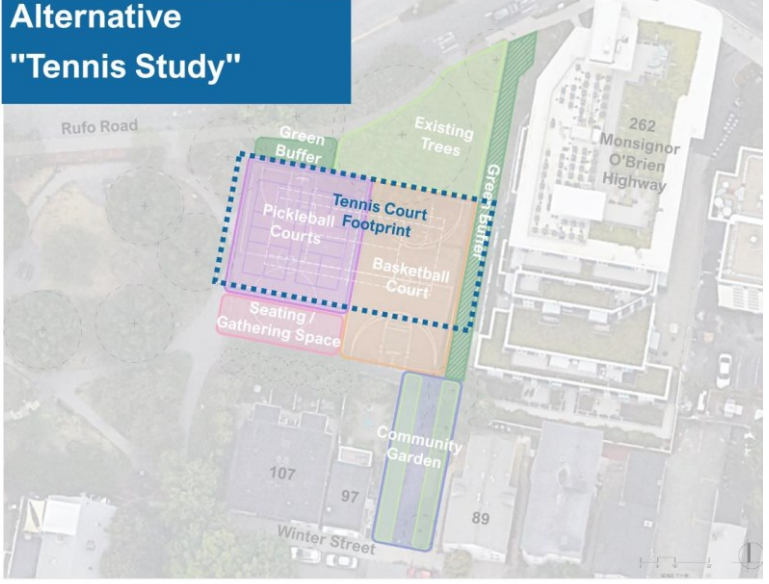
Concept C
“Fitness Loop”



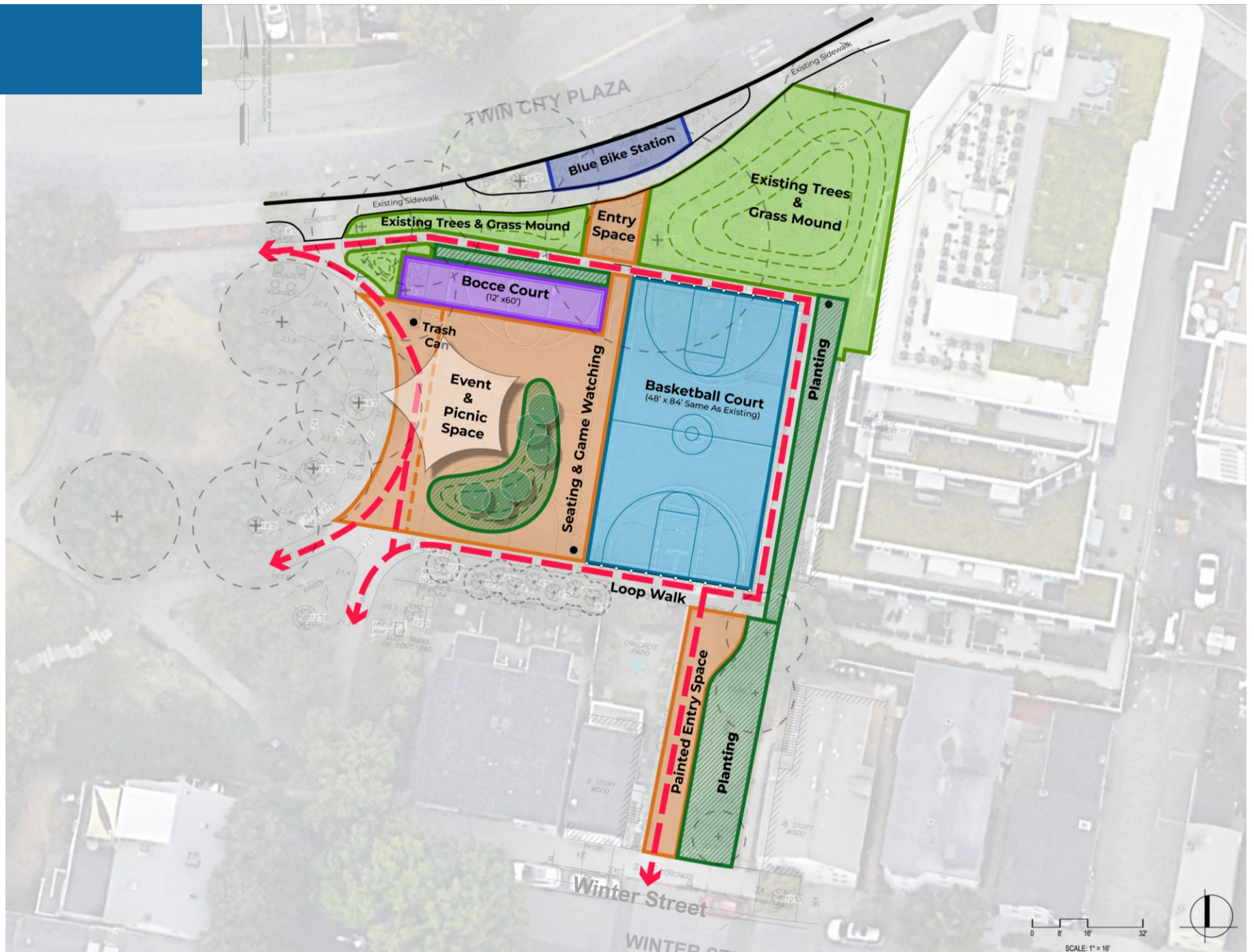
Alternative
“Pickleball Study”



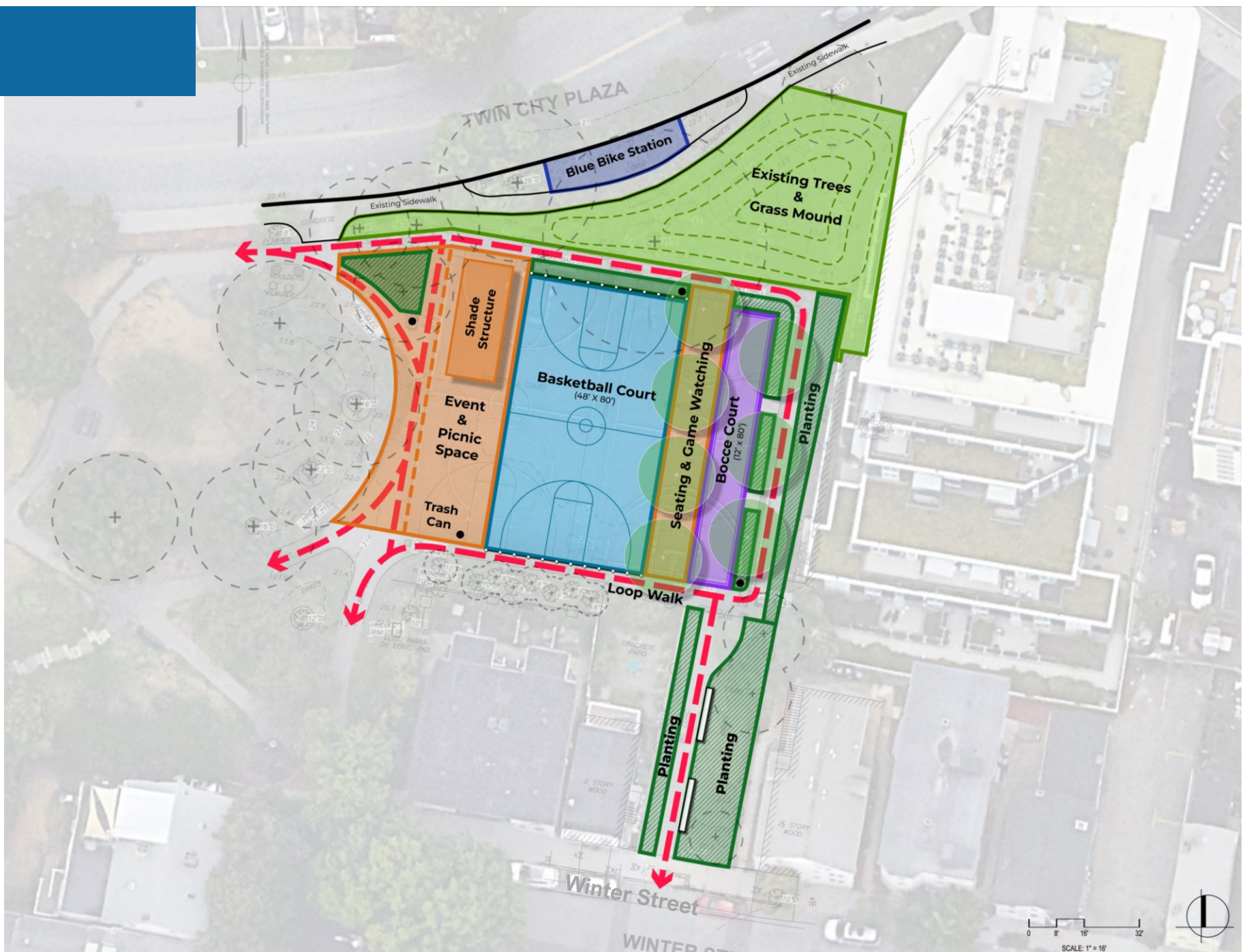
Alternative
“Tennis Study”



Concept 1A



Concept 1B



Concept 2



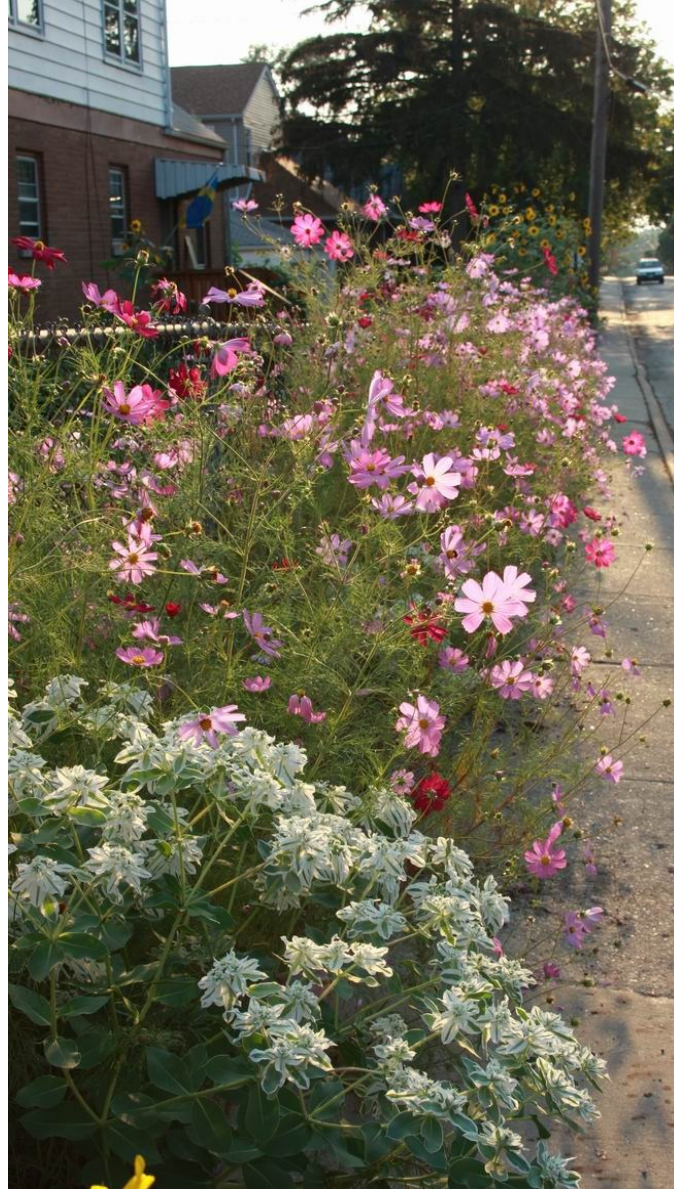
Event & Gathering Space



Seating & Game Watching



Planting



Court Mural & Loop Walk



Thank you!

Questions?
Comments?

For more information:

Gary Chan, Neighborhood Planner

gchan@cambridgema.gov

