

A decorative graphic on the left side of the slide consists of a grid of colorful squares in shades of red, orange, yellow, green, and blue. Some squares contain white icons: a group of three people, a bus, a building with columns, a network of nodes, and a checklist.

# Town Gown Report 2018

Presentation to the Planning  
Board  
February 5, 2019



# Highlights

Israel Ruiz

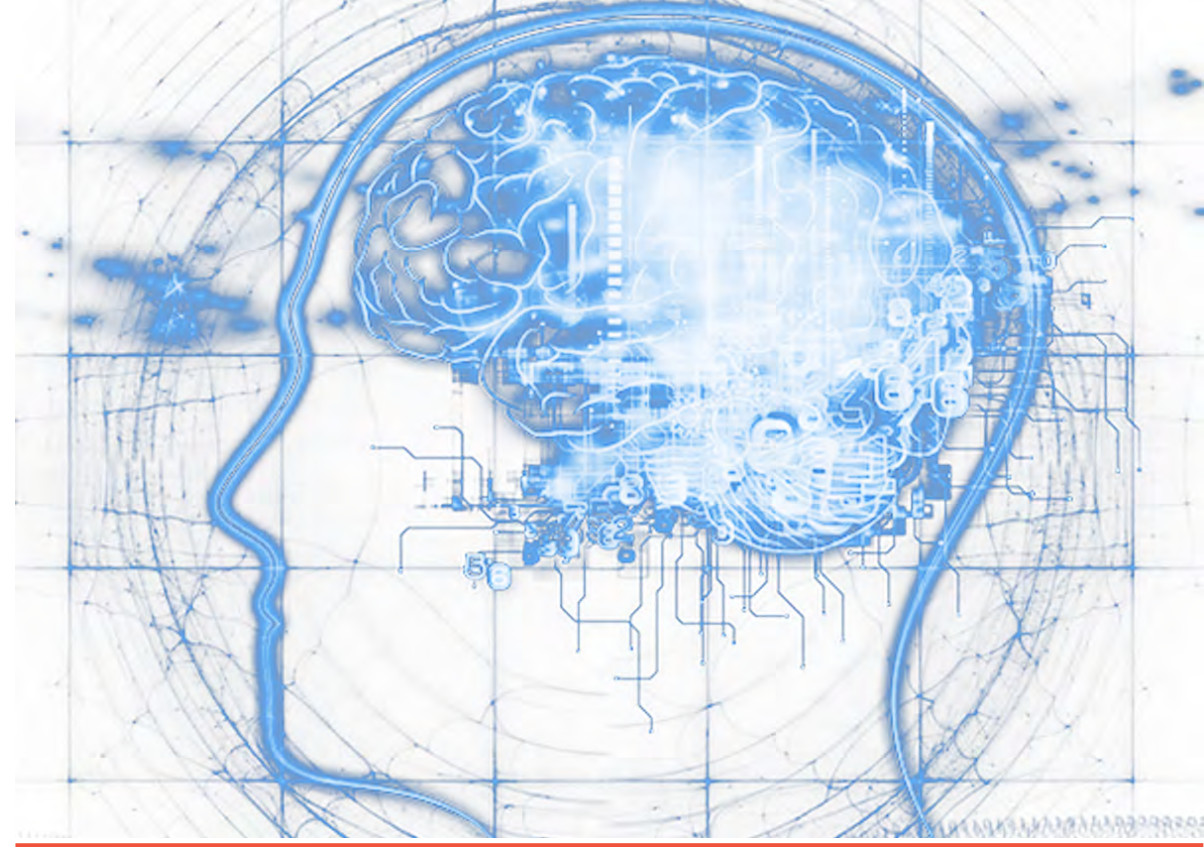
# MIT.nano

- Historic commitment to research at MIT
- State-of-the-art facility that will serve over 2,000 MIT faculty and researchers
- Located in the campus core, the building was completed in June 2018



# MIT Stephen A. Schwarzman \$ College of Computing \$

- An interdisciplinary hub for work in computer science, artificial intelligence, data science and related fields
- Vassar Street site promotes connectivity to MIT campus
- Building design expected to begin in early 2019



# The Engine

- A home for Tough Tech founders "
- The Engine provides capital, labs, equipment, tools, space, and connections
- Building the next generation of world-changing companies





# Campus Planning (

Jon Alvarez



# Housing

Vassar Street  
Residence



70 Amherst Street



Kendall Square  
Site 4



Volpe Development

KENDALL SQUARE AT MIT

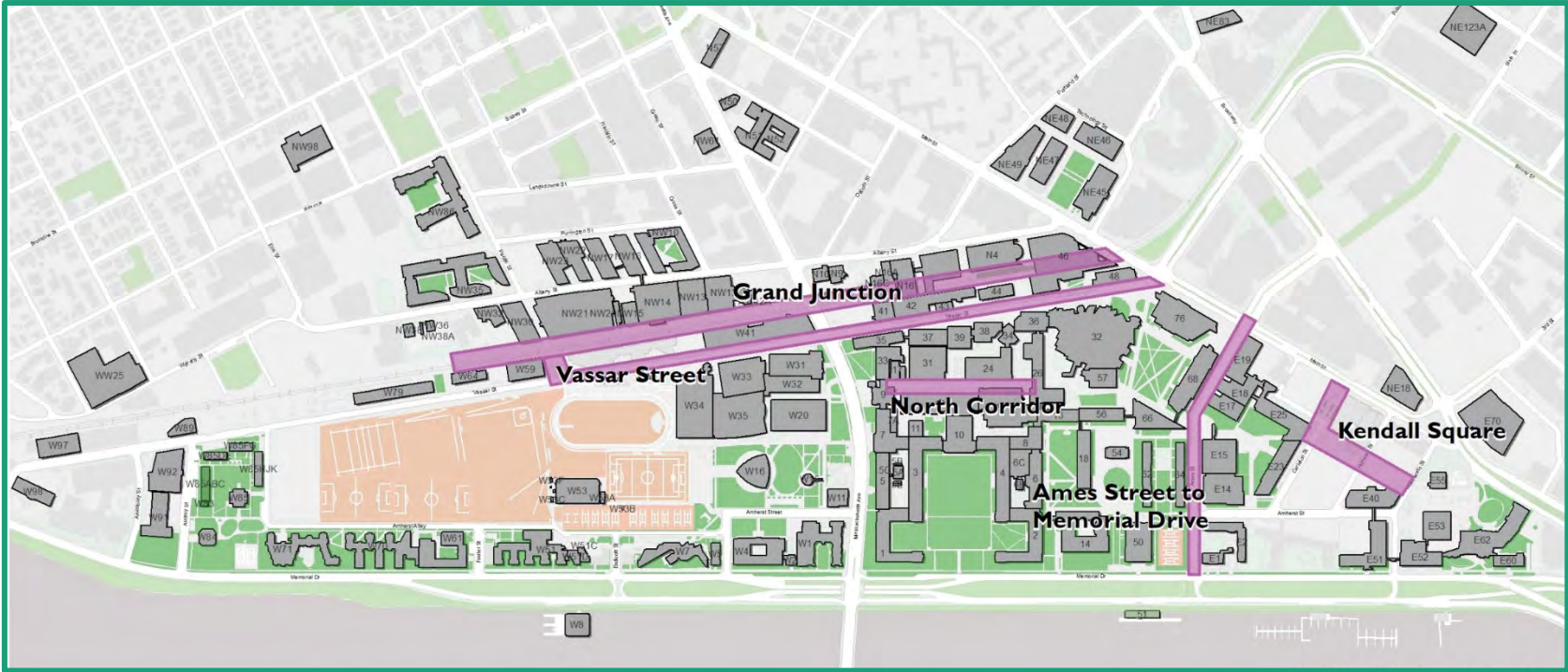


Kendall Square  
One Broadway Residence

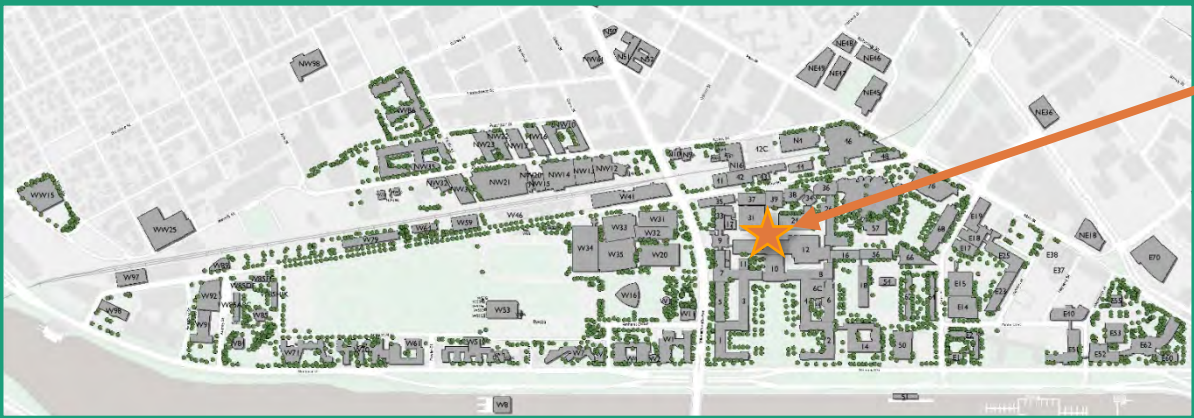


Massachusetts  
Institute of  
Technology

# Streetscape & Open Space



*~2,300 trees on campus*

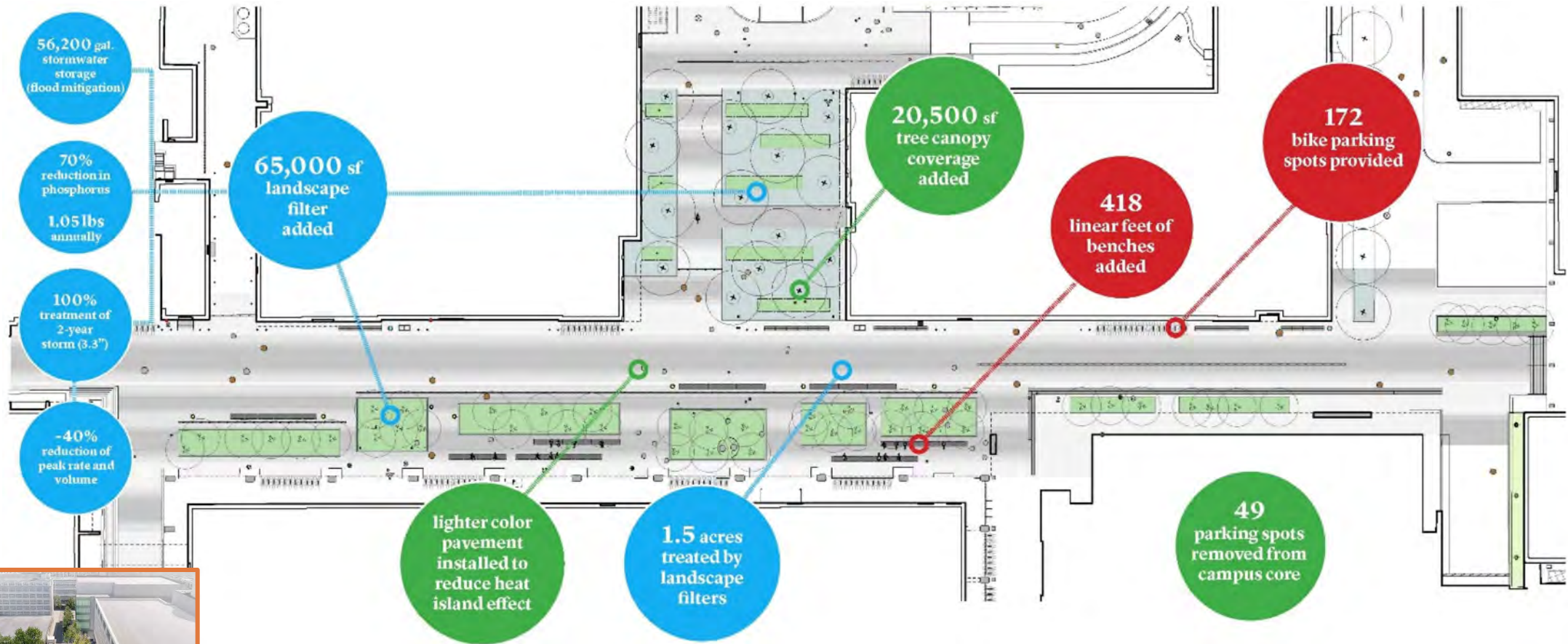


*100+ trees added in North Corridor this year*

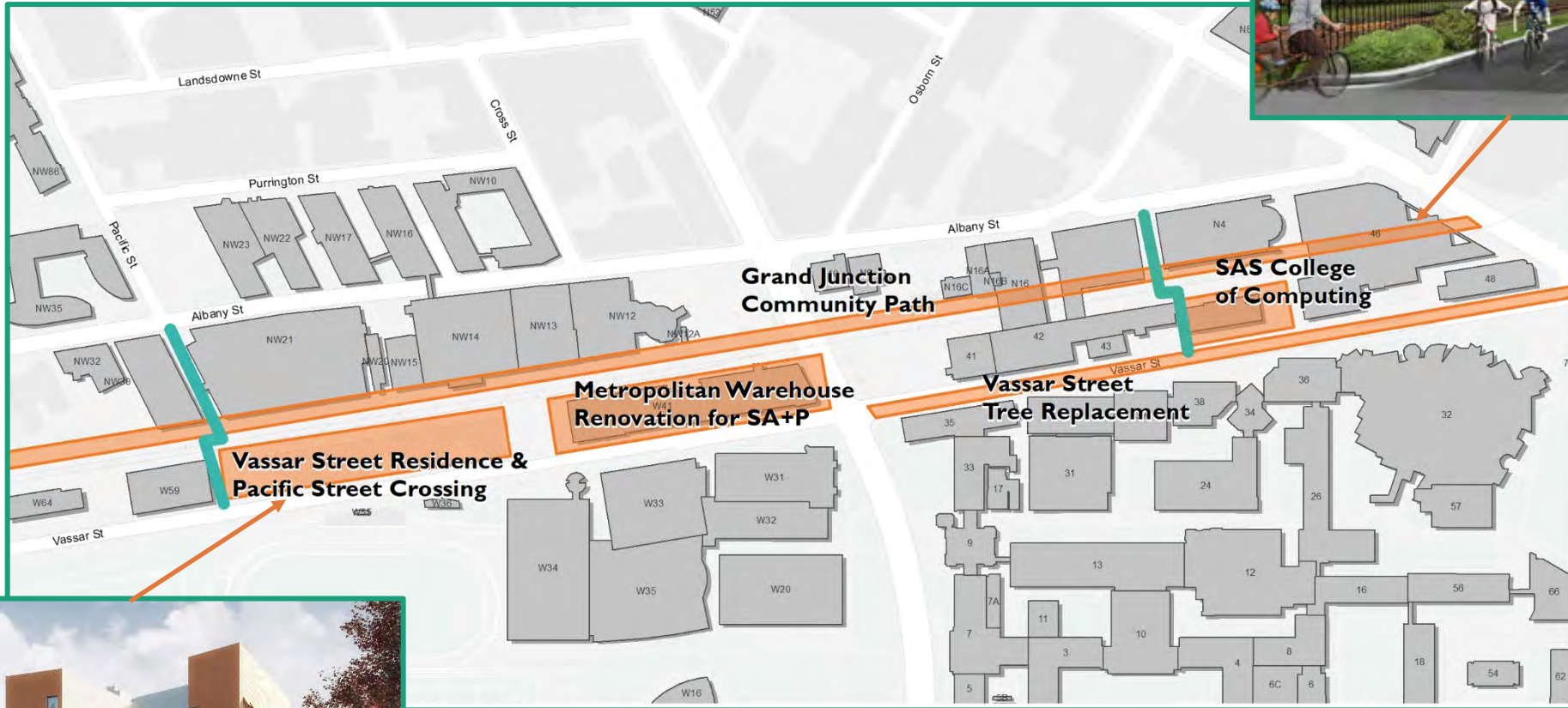




# North Corridor &



# Vassar Street



# Current Projects '

Central Utility Plant  
Expansion



Metropolitan  
Warehouse  
Renovation



New Music Building





# Sustainability & Resiliency

Julie Newman



# Scales of Impact



Individual



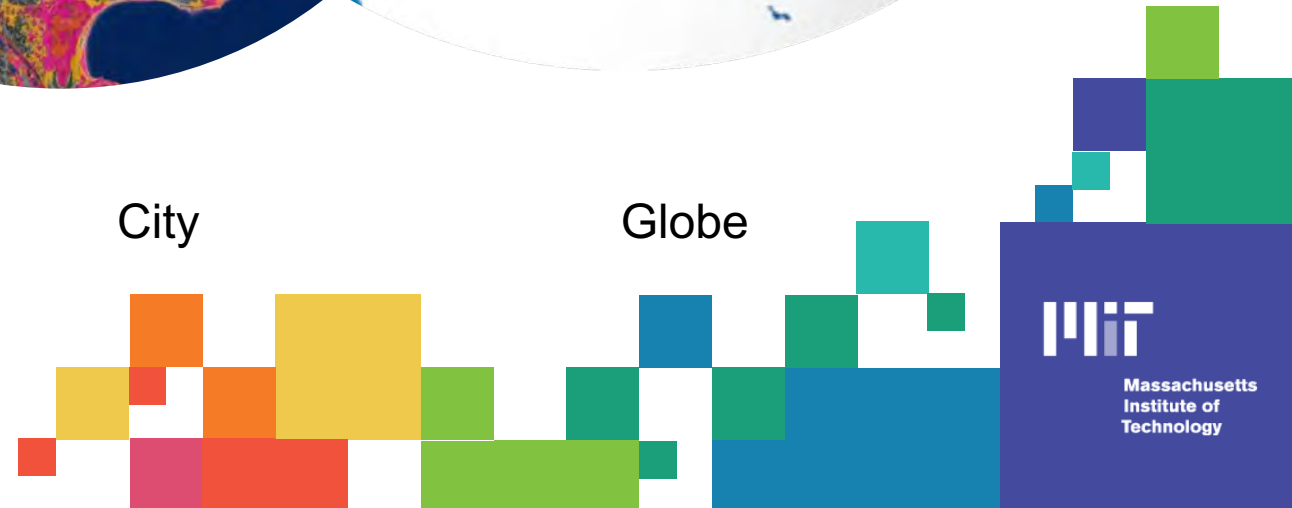
Campus

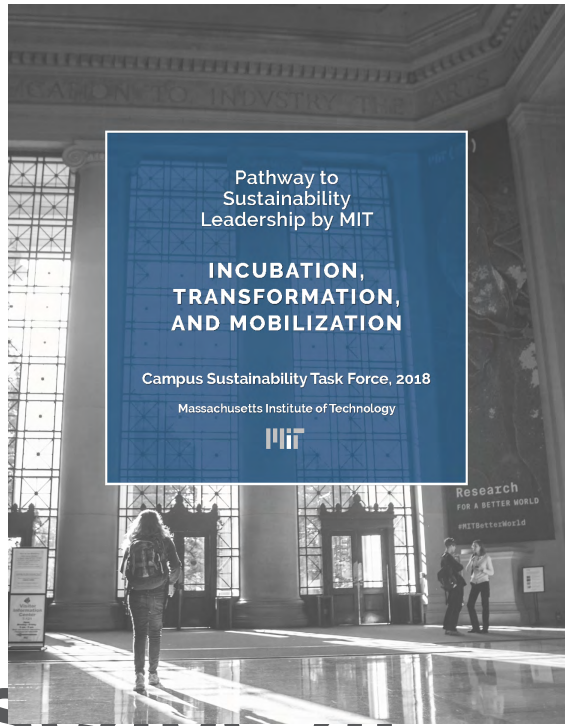
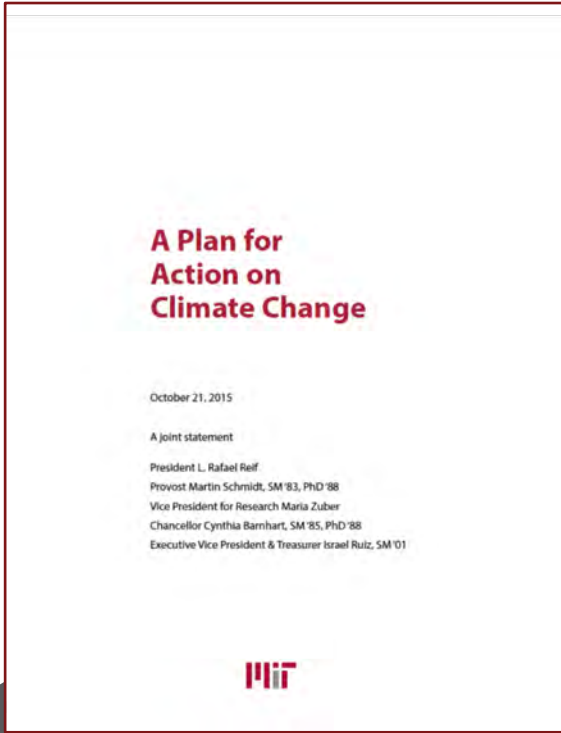
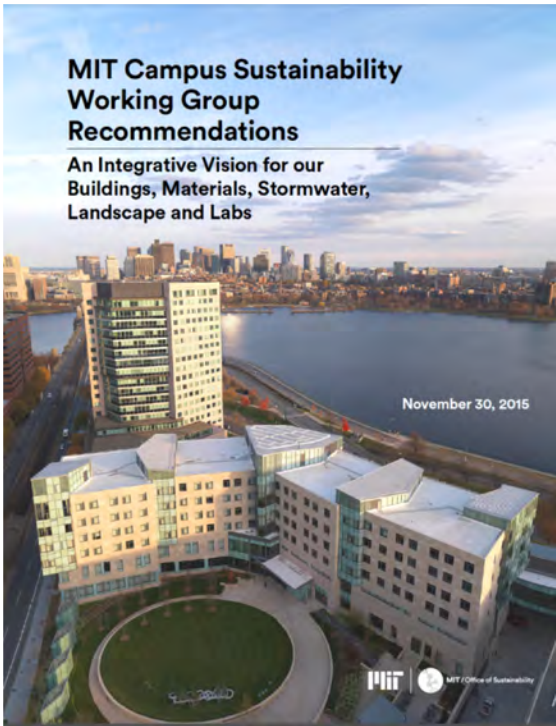


City



Globe

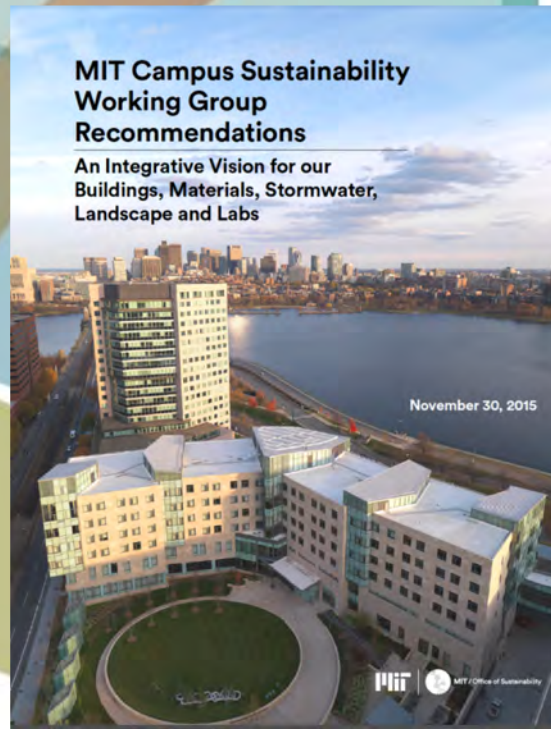
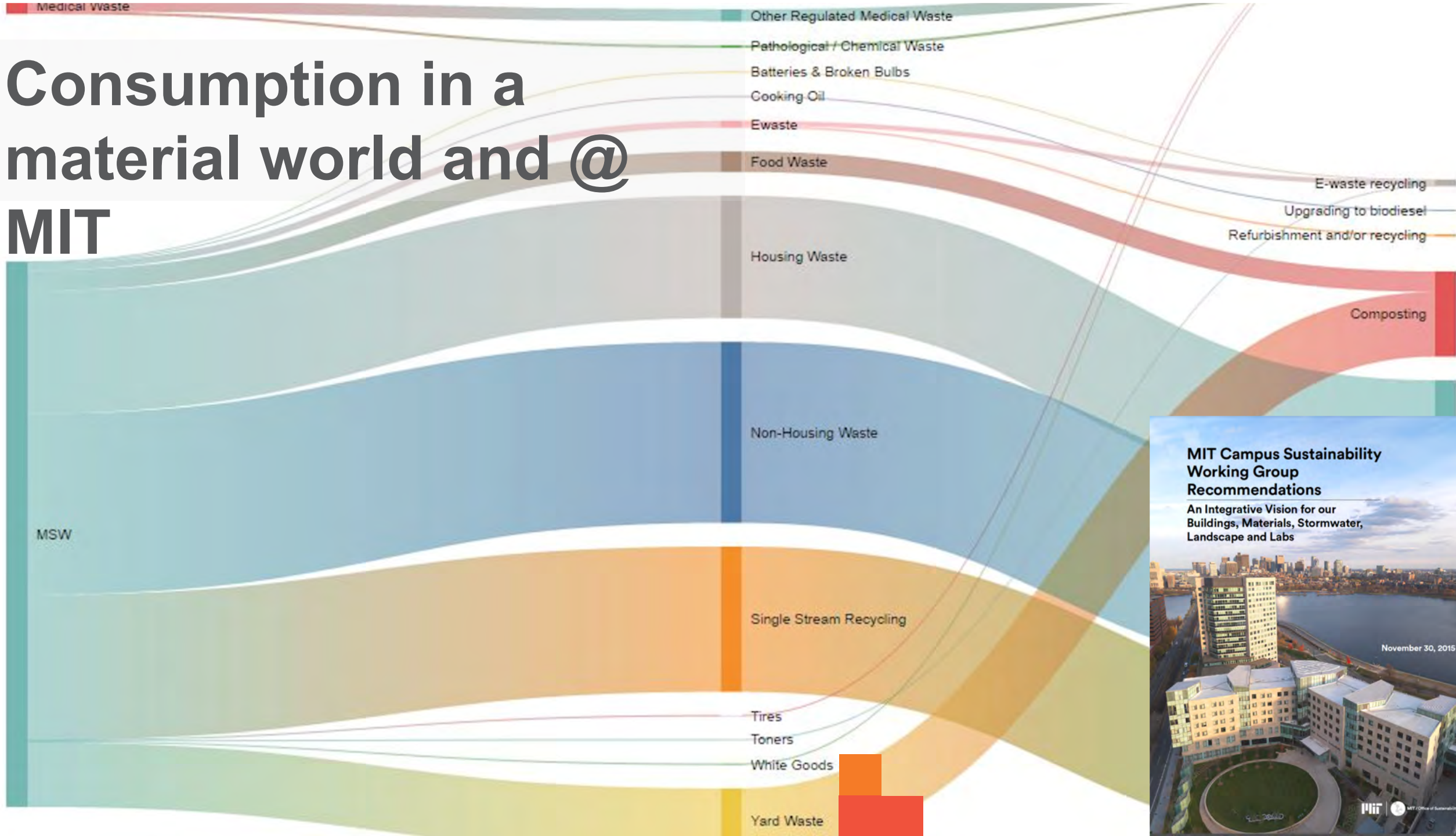




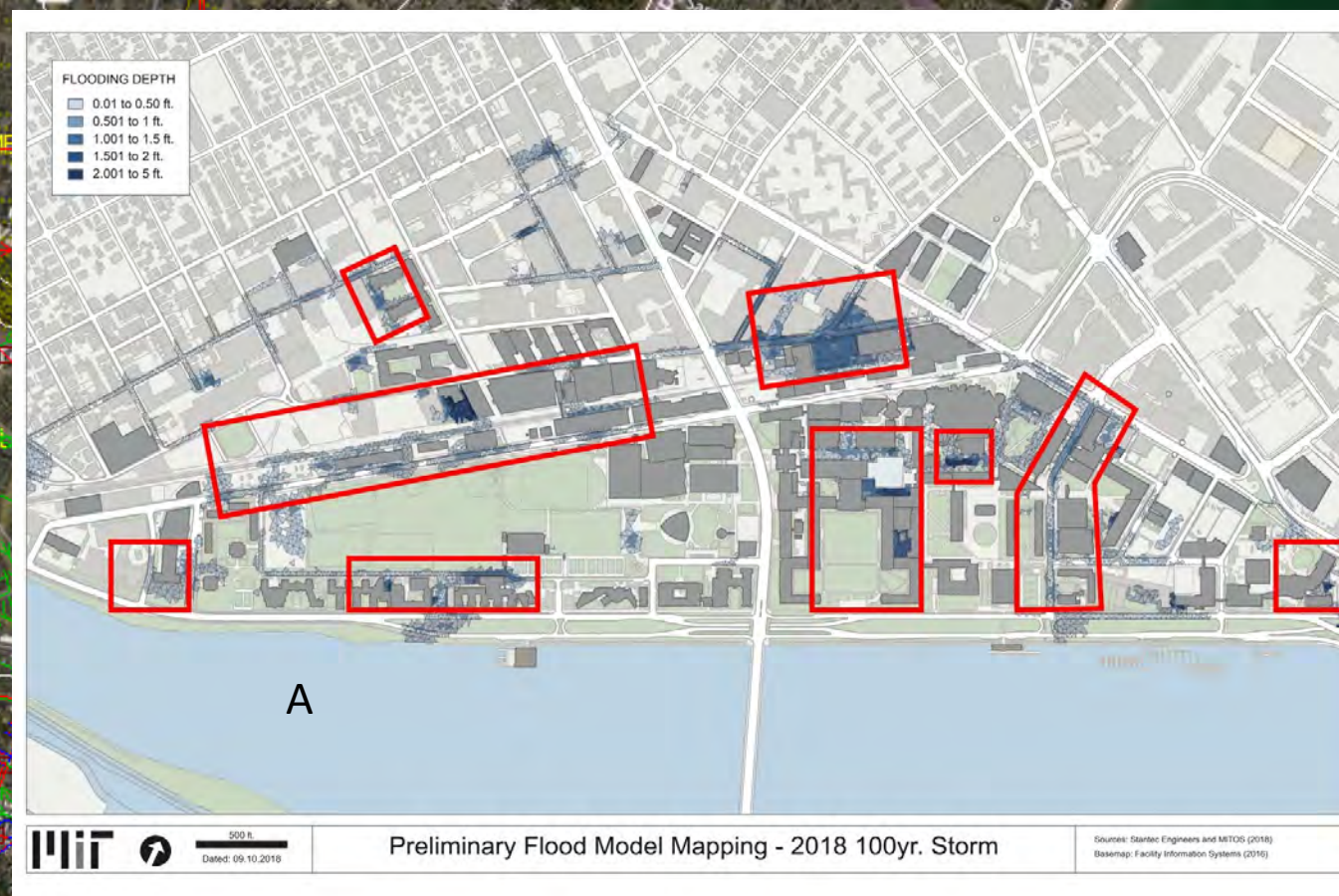
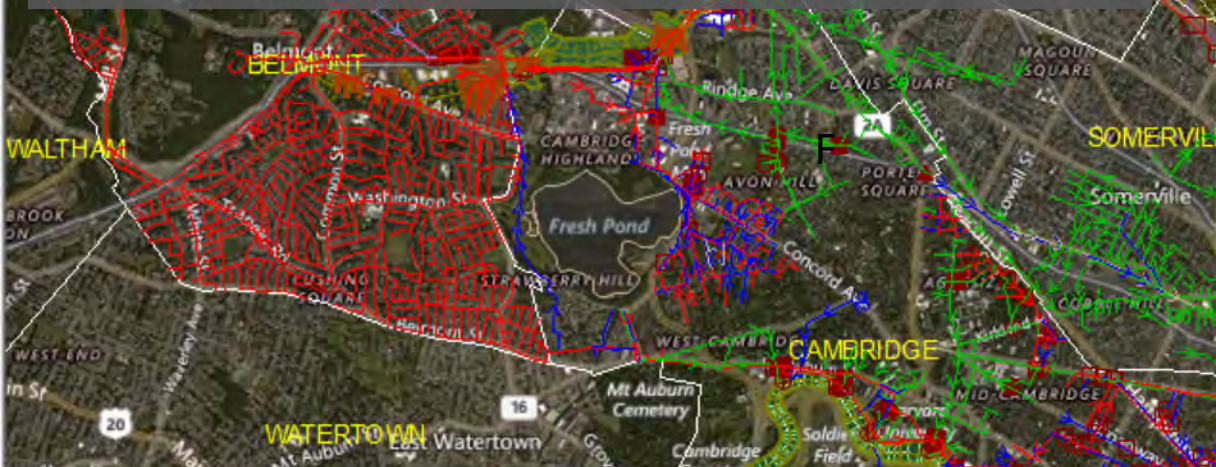
# Sustainability, Climate, & Food Landscape at MIT,



# Consumption in a material world and @ MIT



# Climate Resiliency: Modeling to Planning

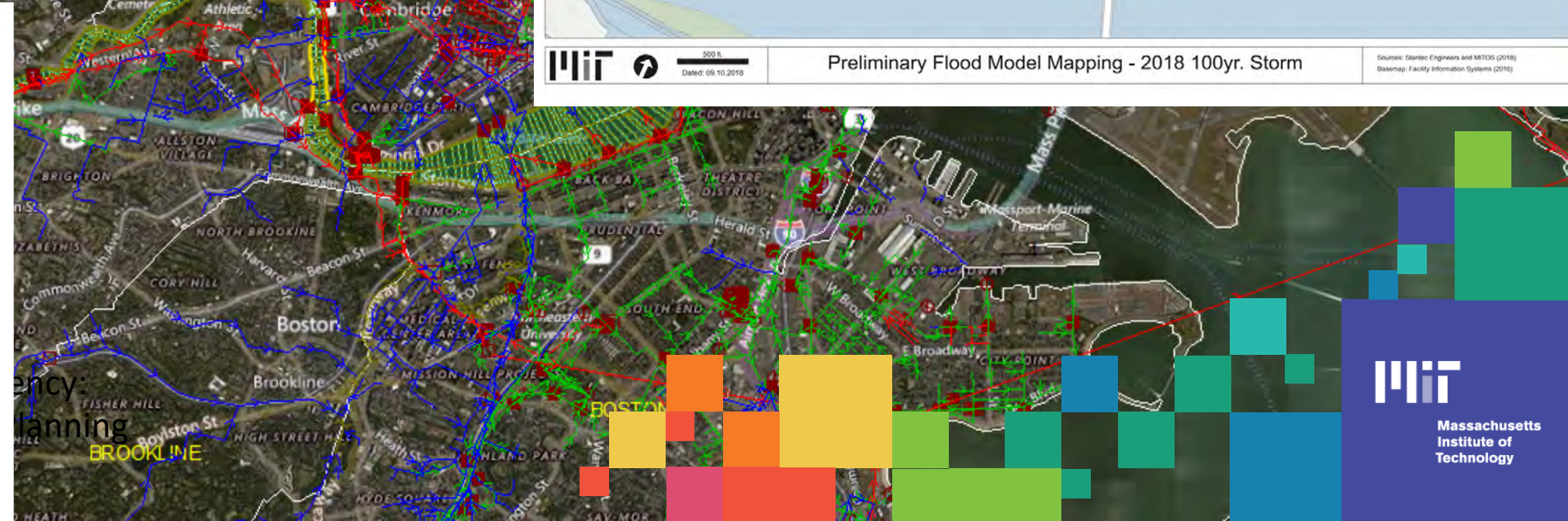


## A Plan for Action on Climate Change

October 21, 2015

A joint statement

President L. Rafael Reif  
 Provost Martin Schmidt, SM '83, PhD '88  
 Vice President for Research Maria Zuber  
 Chancellor Cynthia Barnhart, SM '85, PhD '88  
 Executive Vice President & Treasurer Israel Ruiz, SM '01



Massachusetts  
 Institute of  
 Technology



# Scales of Impact: Renewable energy growth



2016

60  
MW

10X

## Fast following organizations

*Examples*

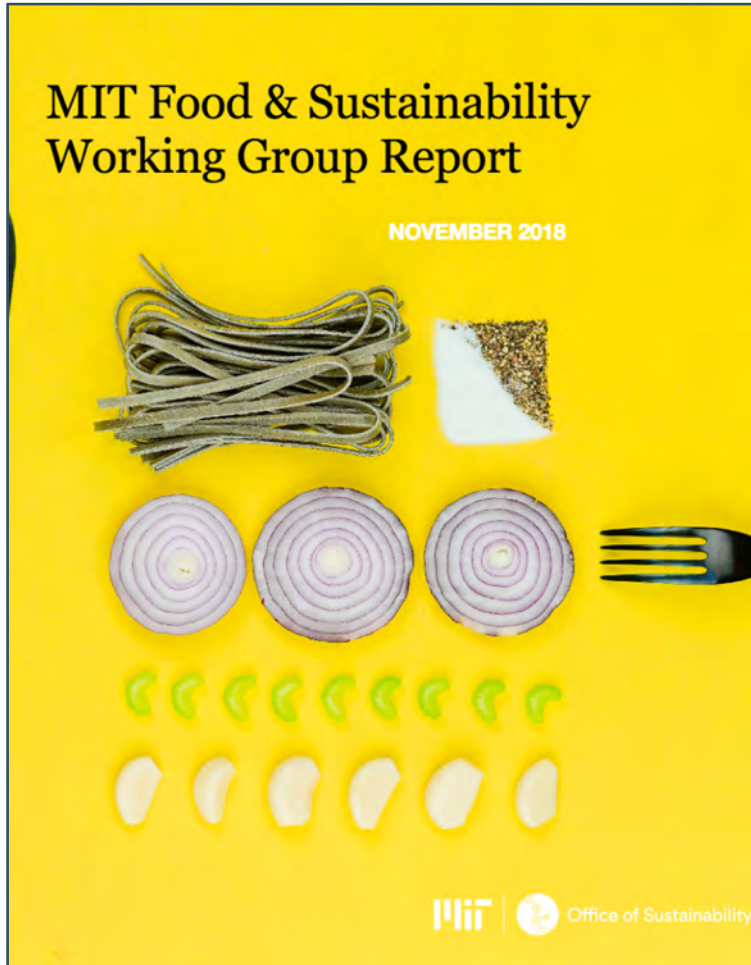
- Arizona State University
- Boston University
- Brown University
- Elizabeth City State University
- Envision Charlotte
- Green Health Exchange
- Green Sports Alliance
- Johns Hopkins
- New York State Schools and Agencies
- Northern Virginia Regional Commission
- University of North Carolina System
- Washington University
- Temple University
- Vanderbilt University

50X

2018



# Food Systems & Sustainability \$



## 5 Focus Areas for Campus Transformation

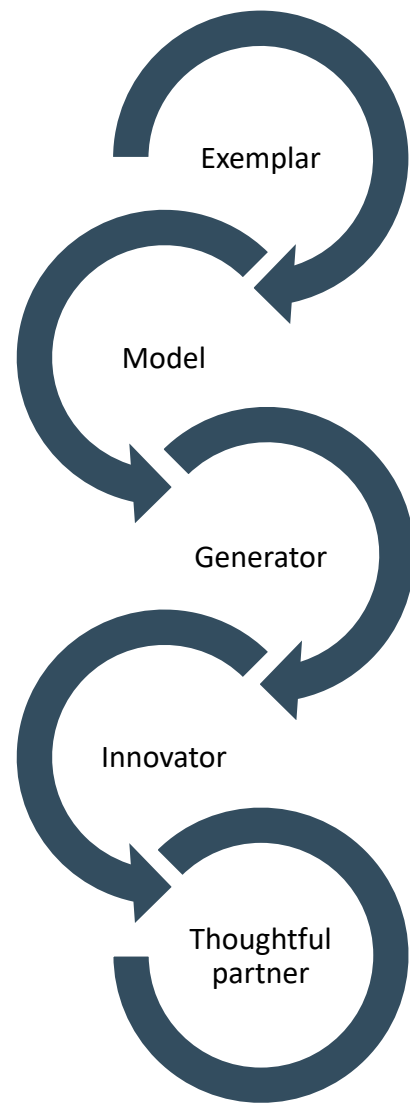
**Access to affordable, sustainable, and culturally meaningful** food and empowerment to make informed choices.

**Standards for food vendors** according to shared environmental, economic, and socially just standards.

**Comprehensive waste reduction strategies** within the MIT food system.

**Vibrant indoor and outdoor spaces** on campus that foster strong social connections and incorporate localized production of food.

**Innovation and experimentation** to create a model campus food system of the future.





# Kendall Square '

Steve Marsh



# Ecosystem Opportunities



SUSTAINABILITY



PROGRAMMING

OPEN SPACE



R&D CAPACITY



HOUSING



CONNECTIONS



RETAIL



# Kendall Square Construction '17

- Construction is progressing on the underground garage and Sites 4 and Site 5
- Site 4 will house 450+ graduate students \*
- Site 5 will be home to the MIT Museum and innovation tenants like Boeing



# Kendall/Volpe Community Contributions To-Date

**\$7.0 million** in community fund payments #

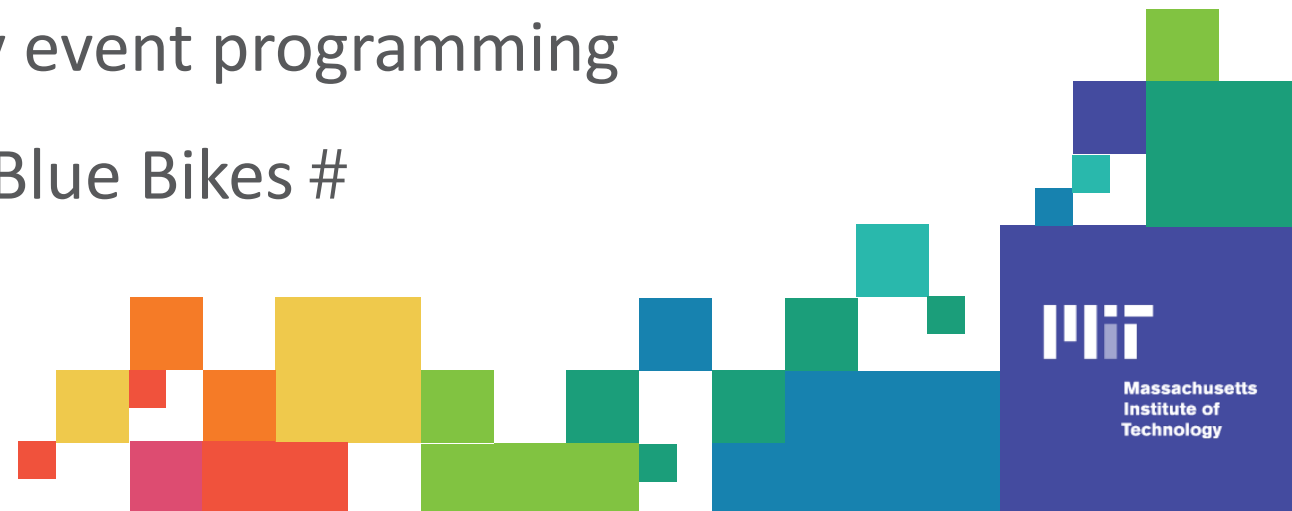
**\$1.7 million** for public “Kendall WiFi” in the Square, Newtowne Court, and Washington Elms #

**\$1.0 million** for Grand Junction multi-use path #

**\$500,000** for the community center design #

**\$230,000** for community event programming

**\$180,000** for Blue Bikes #



# Staying Connected with the Community (



Volpe Block Party



Hubweek/Site 5 groundbreaking





# Volpe Community Benefit Commitments &

**\$25.5 million** for a community center \$

**\$8.5 million** to community fund for nonprofits \$

**\$8.5 million** for transit improvements \$

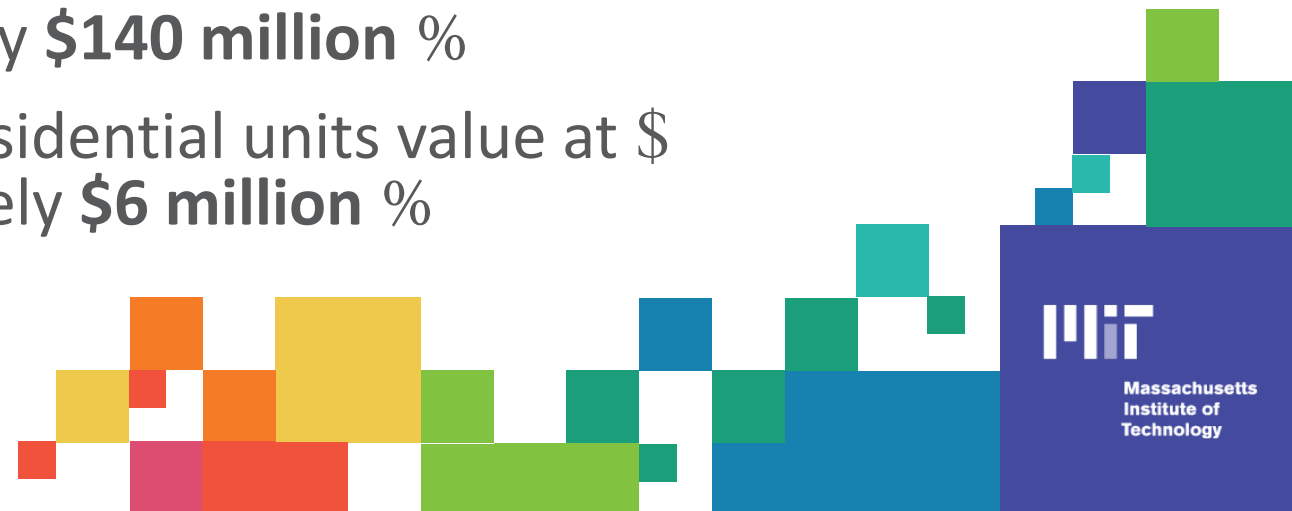
**\$8.5 million** for Grand Junction multi-use path \$

**\$1.5 million** to support the job connector program \$

**\$1.0 million** for an innovation arts program \$

**280** affordable residential units valued at \$  
approximately **\$140 million** %

**20** middle-income residential units value at \$  
approximately **\$6 million** %



# New DOT Volpe Facility



Volpe conceptual massing – 2017 &



Volpe proposed massing – 2019



# New DOT Volpe Facility \$



Site Plan



East Façade facing public walkway



# New DOT Volpe Facility \$



View from Fifth Street %



Landscape Art by Maya Lin



# New DOT Volpe Facility \$



View from Binney Street %



Landscape Art by Maya Lin



# Historic Renovation (



139 Main St.



750 Main St. \$

Renovation of historic )  
buildings will continue to  
activate the Main Street )  
corridor





# Educational Initiatives

Sarah Gallop

# MIT Impact Scholarships \$

- \$10,000 scholarship to help defray college costs
- Now in its 2<sup>nd</sup> year, 20 Cambridge residents are putting MIT's scholarships to work
- Ten new scholarships are awarded each year
- Criteria: personal impact in the community





# Pathways to Invention

*Starting early at Fletcher-Maynard Academy (*



# Pathways to Invention

*Continuing through middle school & beyond (*



# K-12 Community Outreach %

- New K-12 Community Outreach Administrator is a direct connection between Cambridge educators and MIT's K-12 initiatives
- We look forward to growing collaborations and strengthening reciprocal partnerships to provide equitable access for youth to MIT programming



A decorative graphic on the left side of the slide consists of a grid of colorful squares in shades of red, orange, yellow, green, and blue. Some squares contain white icons: a group of people, a bus, a building, a network of nodes, and a calendar. The squares are arranged in a stepped pattern that descends from the top left towards the bottom right.

# Thank you!

**Presentation to the Planning  
Board  
February 5, 2019**