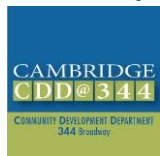


City of Cambridge  
Community Development Department

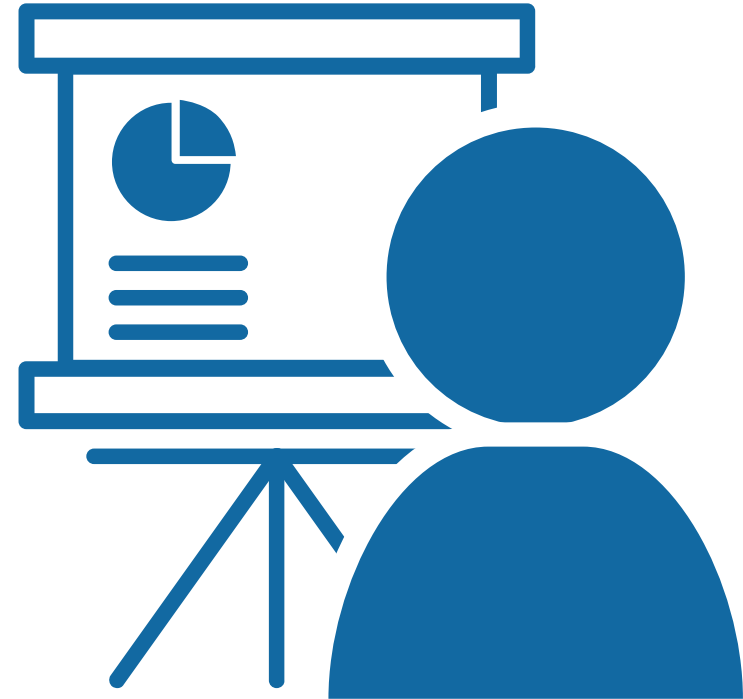
# Joint Meeting of Bicycle, Pedestrian, Transit Advisory Committees

January 20, 2021



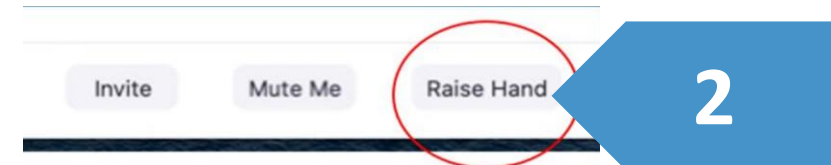
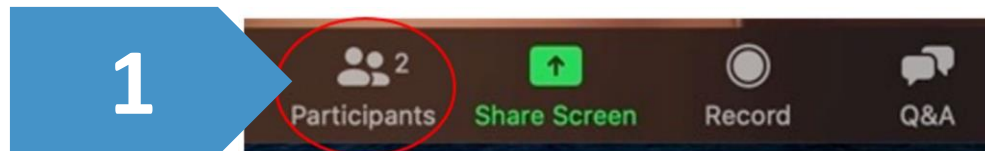
# Meeting Agenda

1. Zoom meeting protocols
2. Street projects
  1. Huron Ave/Glacken Field
3. Public Comment
4. Development Project Review
  1. Alewife Park
  2. 51 Vassar St - MIT
  3. 269-301 Vassar St - MIT
  4. Other Development Project Updates
5. Public Comment
6. Other Updates and Announcements



# Committee Member Instructions

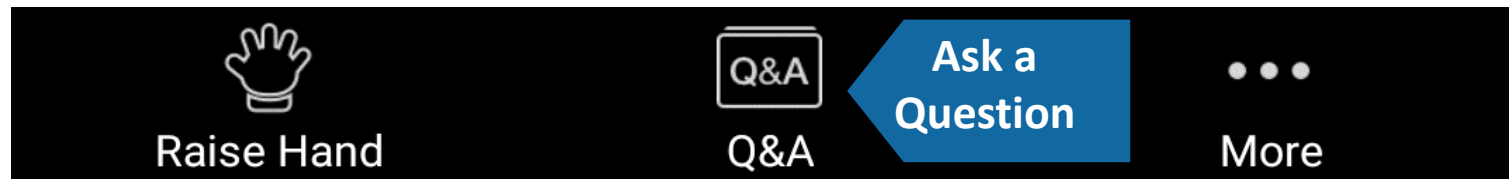
- Committee members may speak and show webcam video
  - Use "Raise Hand" button to help manage discussion
  - *New location* for "Raise Hand" for some users in "Reactions" button
  - \*9 to Raise Hand by phone
- Please stay muted unless speaking
  - \*6 to mute/unmute by phone



# Public Comment Instructions

- Members of the public are muted and cannot show webcam video
- Public can write questions or ask for assistance in Q&A window at any time
  - Questions may be submitted at any time and will be addressed as time allows, during discussion/comment periods
- During the Public Comment period, use the "Raise Hand" button to signal you have a question/comment. A staff member will then enable you to unmute yourself.
  - \*9 to Raise Hand by phone
  - \*6 to Mute/Unmute by phone
- Please be respectful! Participants will be removed for inappropriate behavior

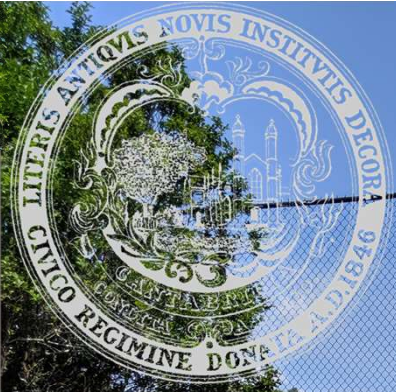
Bottom Panel of  
Zoom Screen





# Huron Ave/Glacken Field

*Kathy Watkins, Dept. of Public Works*



**THE WORKS**  
CAMBRIDGE  
DEPARTMENT  
OF PUBLIC

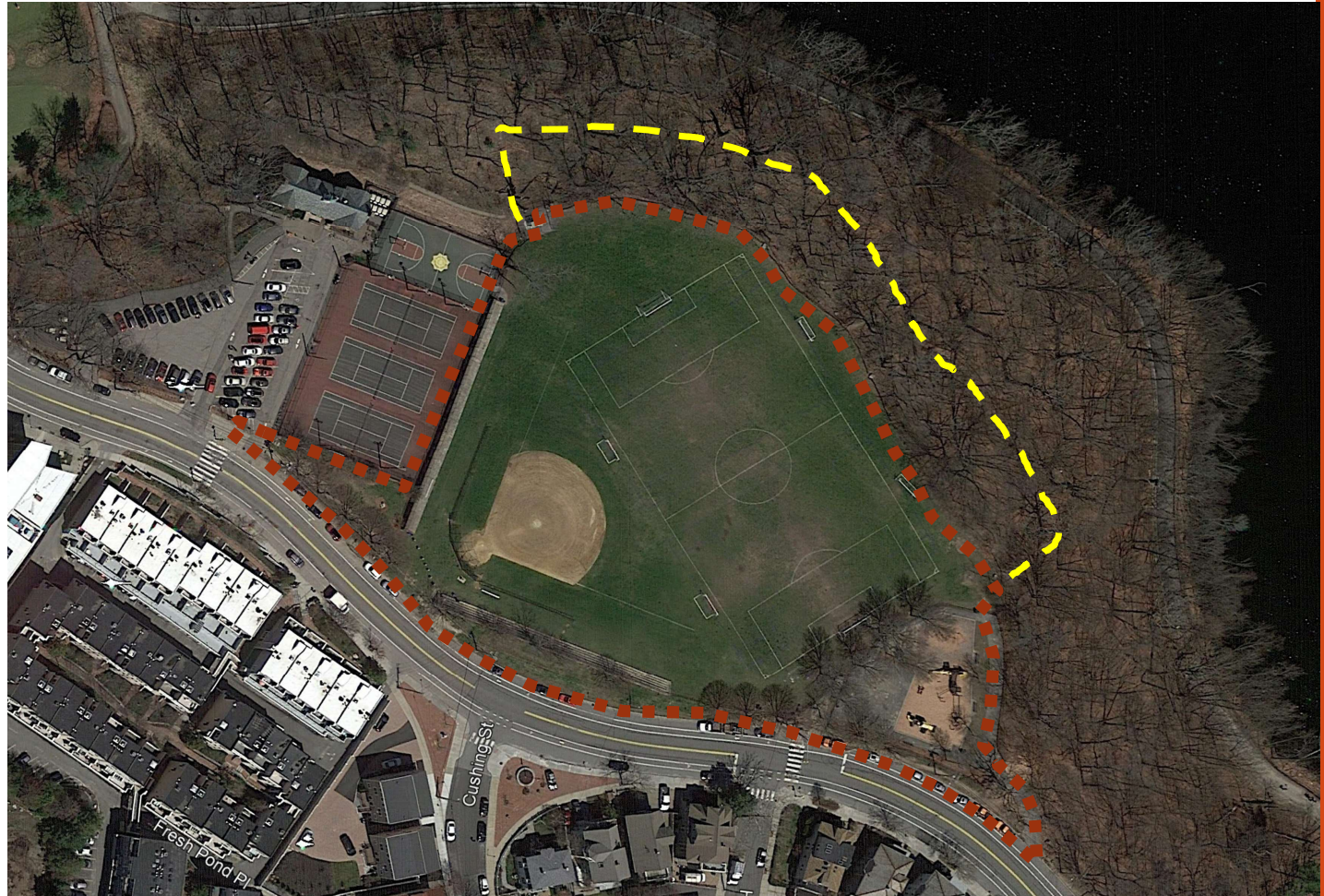
# Glacken Field Renovation

## Joint Committee Meeting

January 20, 2021

# Project Overview

GLACKEN FIELD





NATURALIZED PLANTING



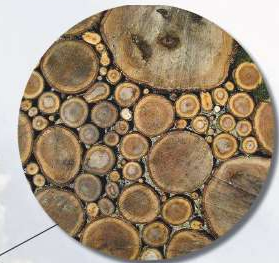
SPECTATOR SEATING



BALL NETTING



LOG SCRAMBLES



LOG PAVERS



POROUS PAVING



STONE SCRAMBLE



PORTABLE TOILET ENCLOSURE



BULL PEN

TOT LOT REFER TO PLAN ENLARGEMENT



PLAYER SEATING

# Glacken Field- Site Plan

February 13, 2020



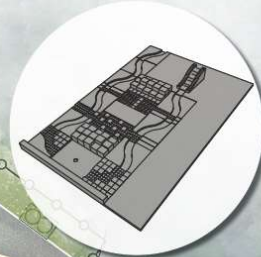




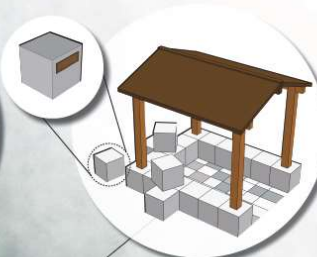
WAVE CURB



SPRAY PAD



RUNNEL



SHADE STRUCTURE



5-12 PLAY STRUCTURE



POROUS PAVING



PLAY SURFACING



SWINGS

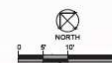


2-5 PLAY STRUCTURE



# Glacken Field- *Playground Plan*

February 13, 2020



# Project Overview and Schedule

Playing fields, tot-lot, site improvements, slope restoration

- Construction on-going
- Fields Playable April 30, 2021, subject to weather and COVID
- Project complete fall 2021, subject to weather and COVID

**Design Focus: Safe connections for people walking, biking and taking the bus along Huron Ave to access neighborhood, Fresh Pond Reservation and Glacken. Meet ADA and Cycling Ordinance.**

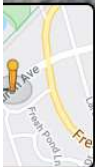




Provide safe and comfortable connections for pedestrians, cyclists and bus riders.

Accessible sidewalk, additional crosswalks, protected bike lanes, floating bus stops.

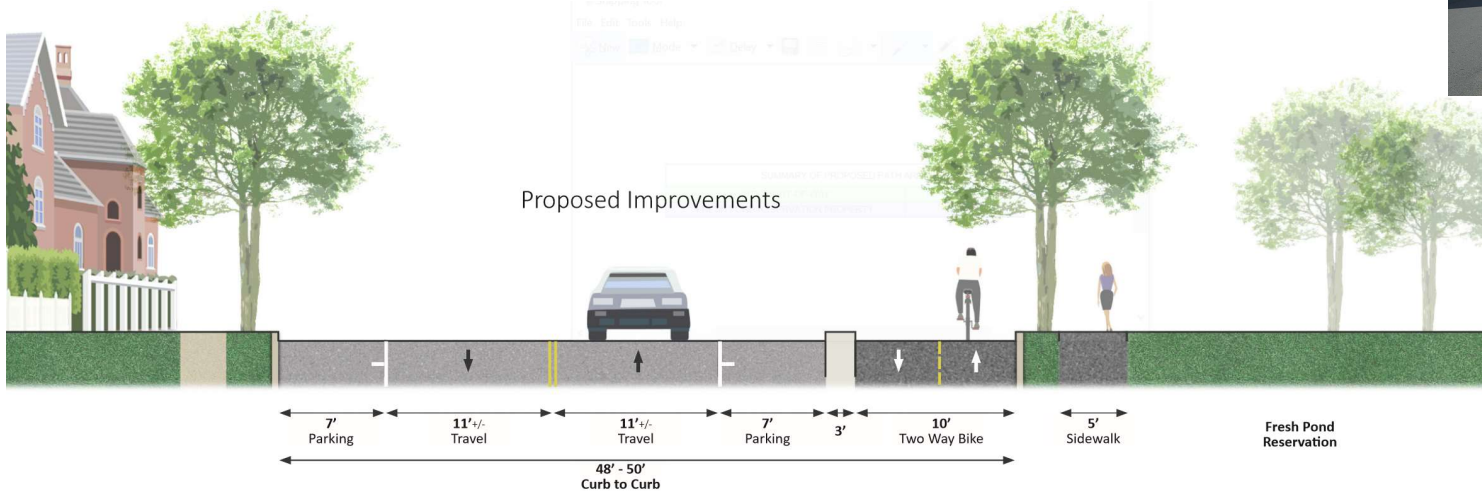
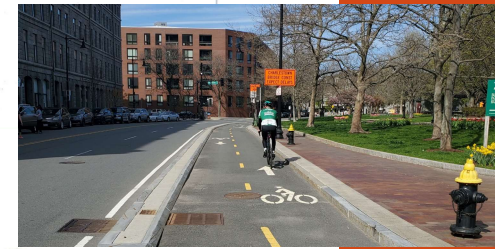
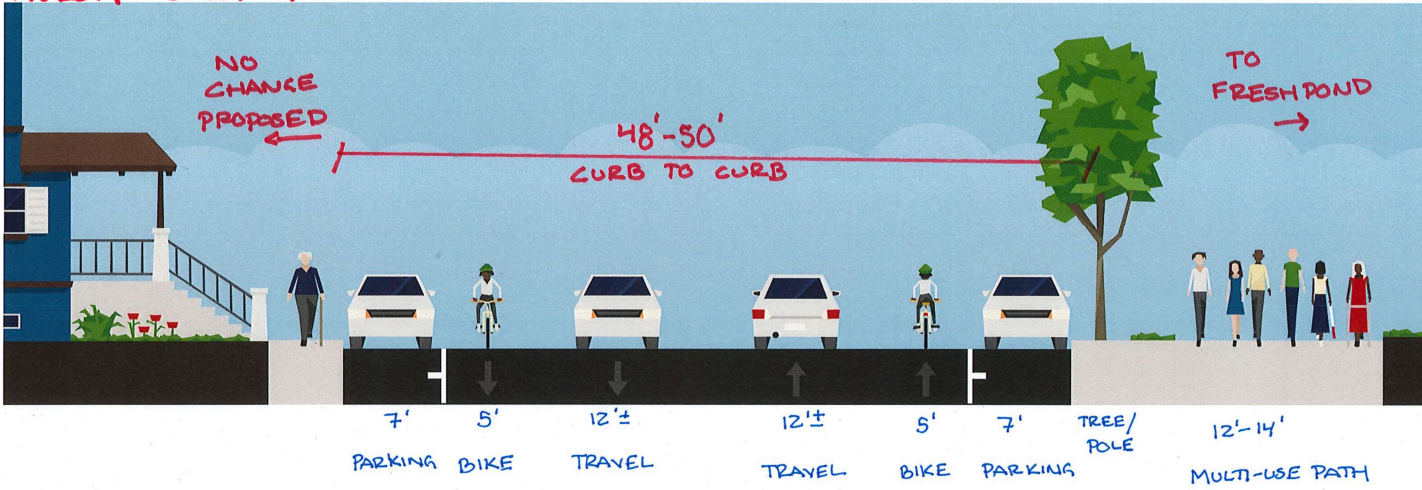
High level overview tonight. Detailed design review in March.



Google



HURON CONCEPT → FEB 2020





- Accessible porous asphalt sidewalk
- 2-way protected bike lane, street level with 2' to 3' wide raised island
- Floating bus stops

Maintains 85% of parking

Uses existing drainage and does not require full-depth roadway reconstruction



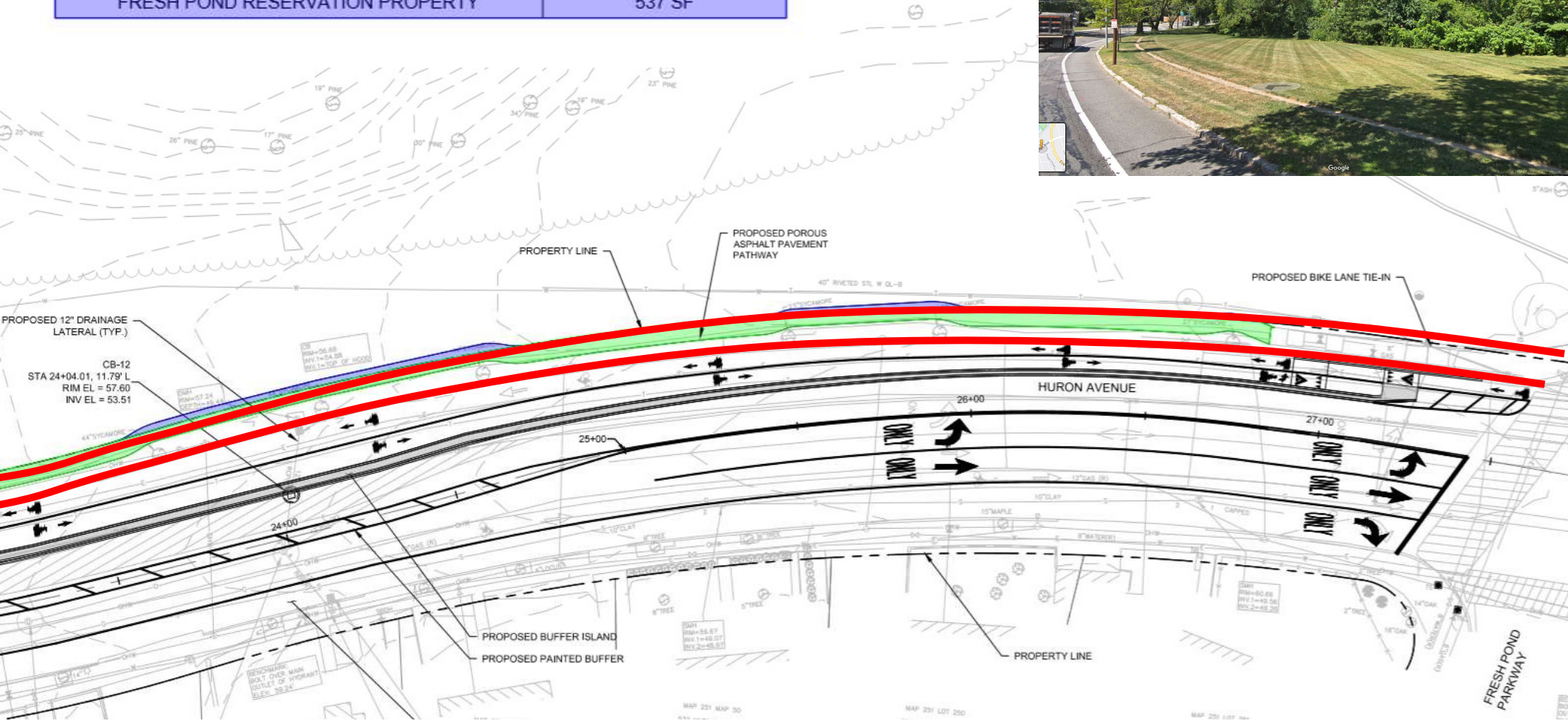
# How much of the sidewalk is location in the Reservation?



	SF in Right-of-Way	SF in Reservation	% on Reservation
Assuming all of it on Reservation		7000	<b>100%</b>
Using GIS	4442	2512	<b>36%</b>
Modifying design to shift sidewalk closer to the road and completing accurate property line survey	6509	537	<b>&lt; 8%</b>



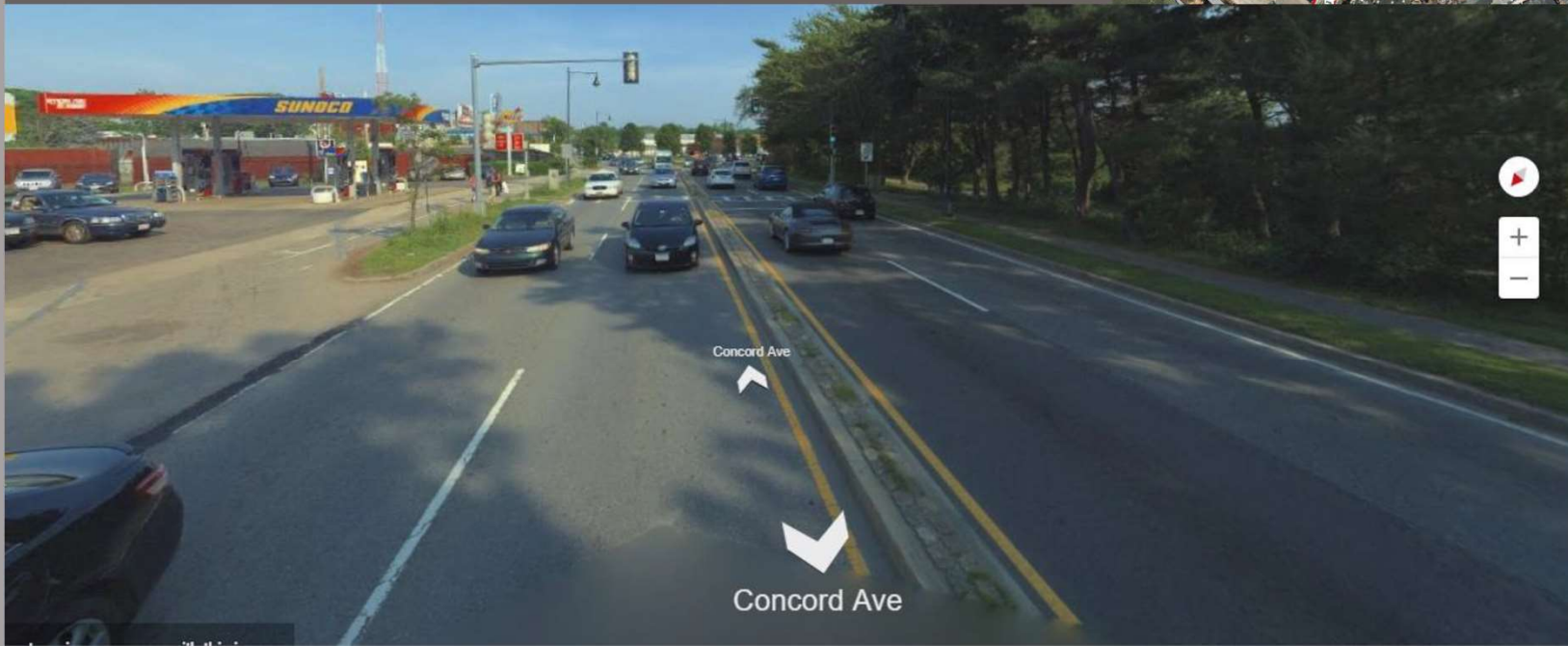
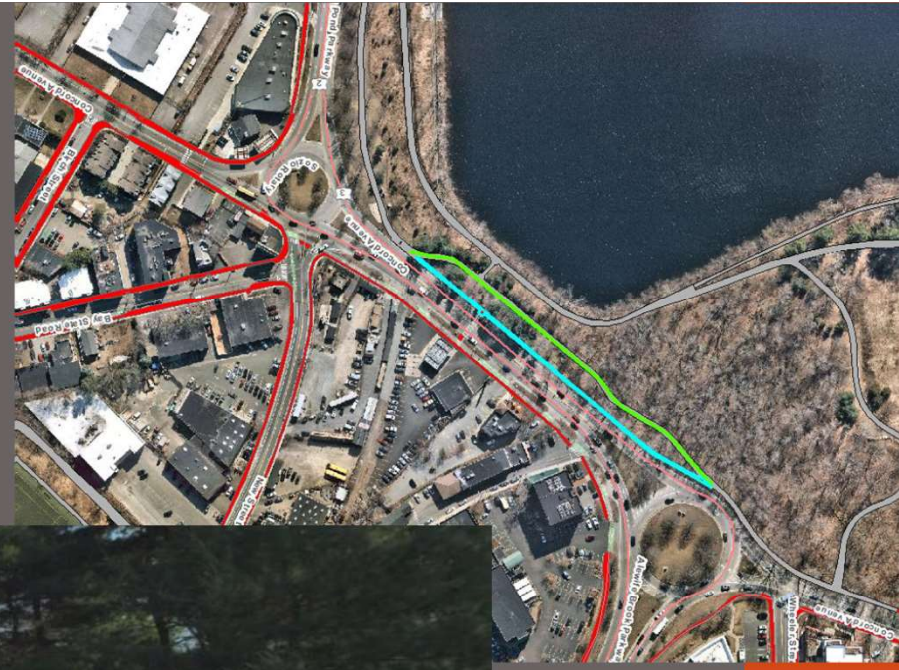
SUMMARY OF PROPOSED PATH AREA	
CITY RIGHT-OF-WAY	6,509 SF
FRESH POND RESERVATION PROPERTY	537 SF



## Potential offsets for the 550 sf of paving in Reservation and 6,500 in right-of-way

Location of Future Improvements	Square Footage of Depaving
Pine Forest Path Phase 1 Reduce perimeter road width to uniform 12', add 3' of vegetation	Potential for 5,700
Remove redundant sidewalk opposite Sunoco (DCR), with upcoming Path Project	Potential for 2,400

# Redundant sidewalk opposite Sunoco



# Existing Crosswalks

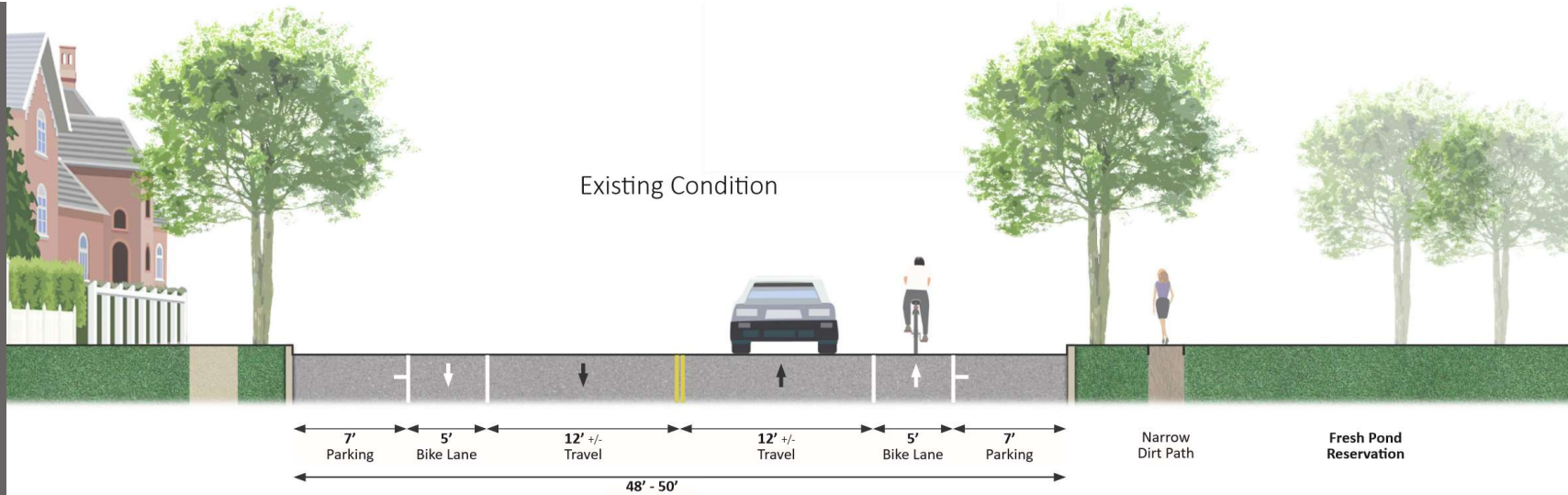


# Existing Crosswalks



# Existing Crosswalks & New Crosswalks















## Unanimous Support From Water Board!!

Minimized impact on Reservation and identified potential offsets for increased paving.

- Minimal sidewalk proposed on the Reservation (537 +/- sq ft).
- Sidewalk porous asphalt.
- Water Department will maintain the path for winter use with minimizing chlorides and salt.
- Identified offsets that can be implemented as part of future projects.
- Work with Water Board, Advisory Board, and staff.
- Worked hard to also minimize the loss of parking. Maintaining 85% of parking (100+/- out of 119+/- spaces).

## Community Process

- Water Board, Jan 12<sup>th</sup>
- Transportation Committees, Jan 20<sup>th</sup>
- Fresh Pond Advisory Board, Jan 21<sup>st</sup>
- Community Meeting, February
- Detailed review with Transportation Committees, March 2021



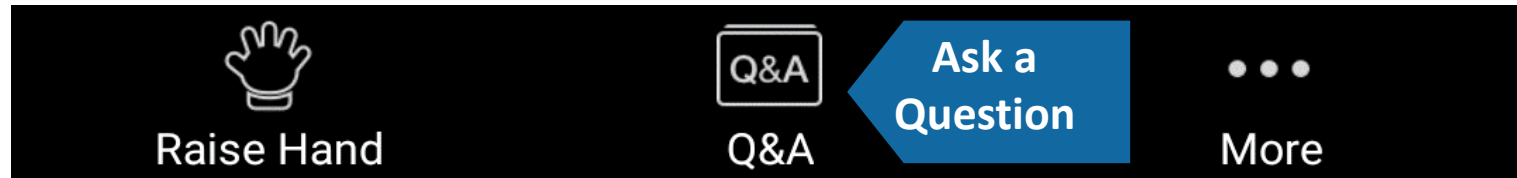


# Public comment

# Public Comment Instructions

- Use the "Raise Hand" button to signal you have a question/comment. A staff member will then enable you to unmute yourself.
  - \*9 to Raise Hand by phone
  - \*6 to Mute/Unmute by phone
- Questions can also be submitted using the Q&A button.

Bottom Panel of  
Zoom Screen



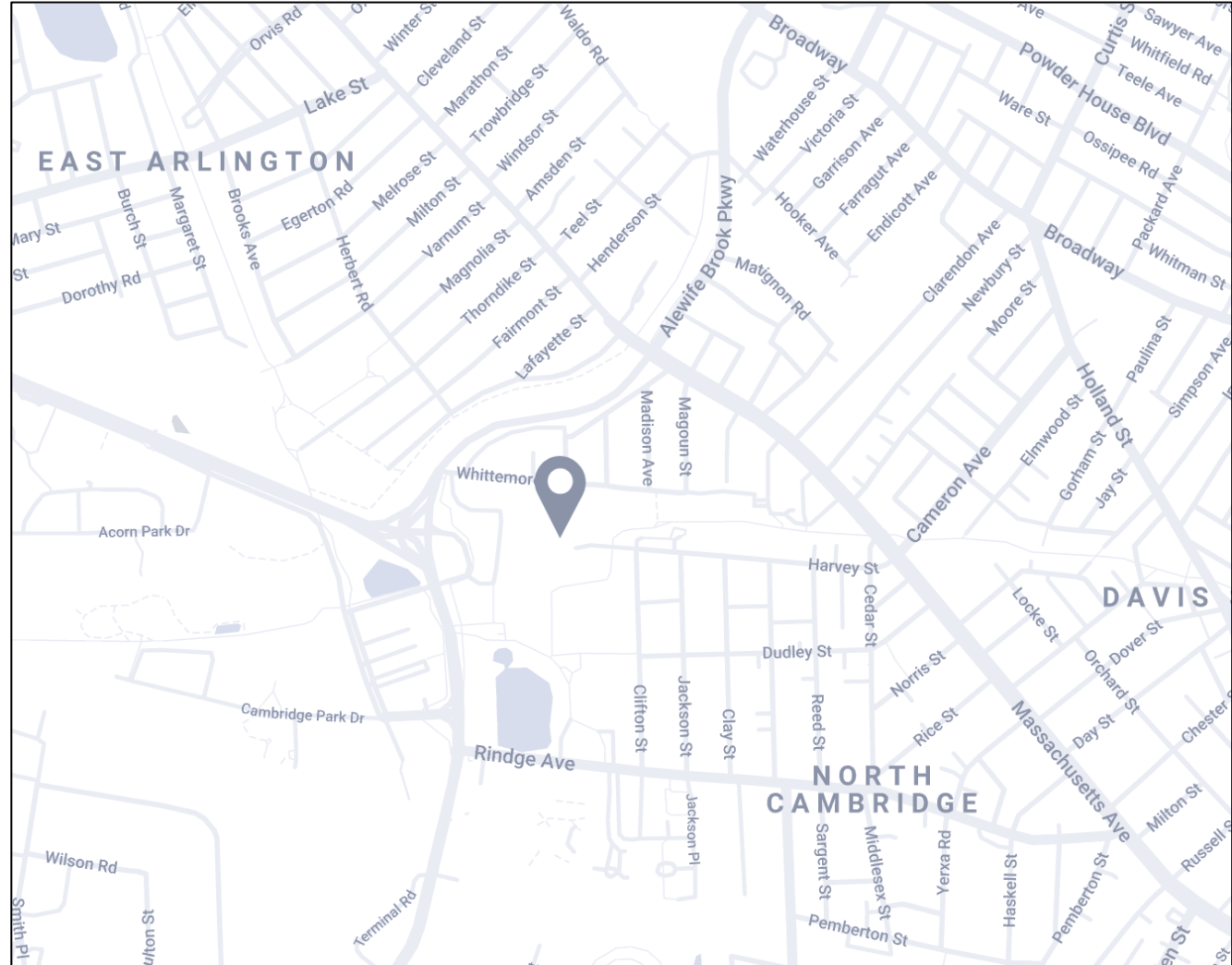


# Development Preview: Alewife Park

*IQHQ*

# Alewife Park

- 26.5-acre site
- Between Rindge Ave and Whittemore Ave
- Includes Jerry's Pond
- Adjacent to Alewife Station, Linear Path, and Russell Field
- Virtual public meeting tomorrow (January 21) at 6:30 PM



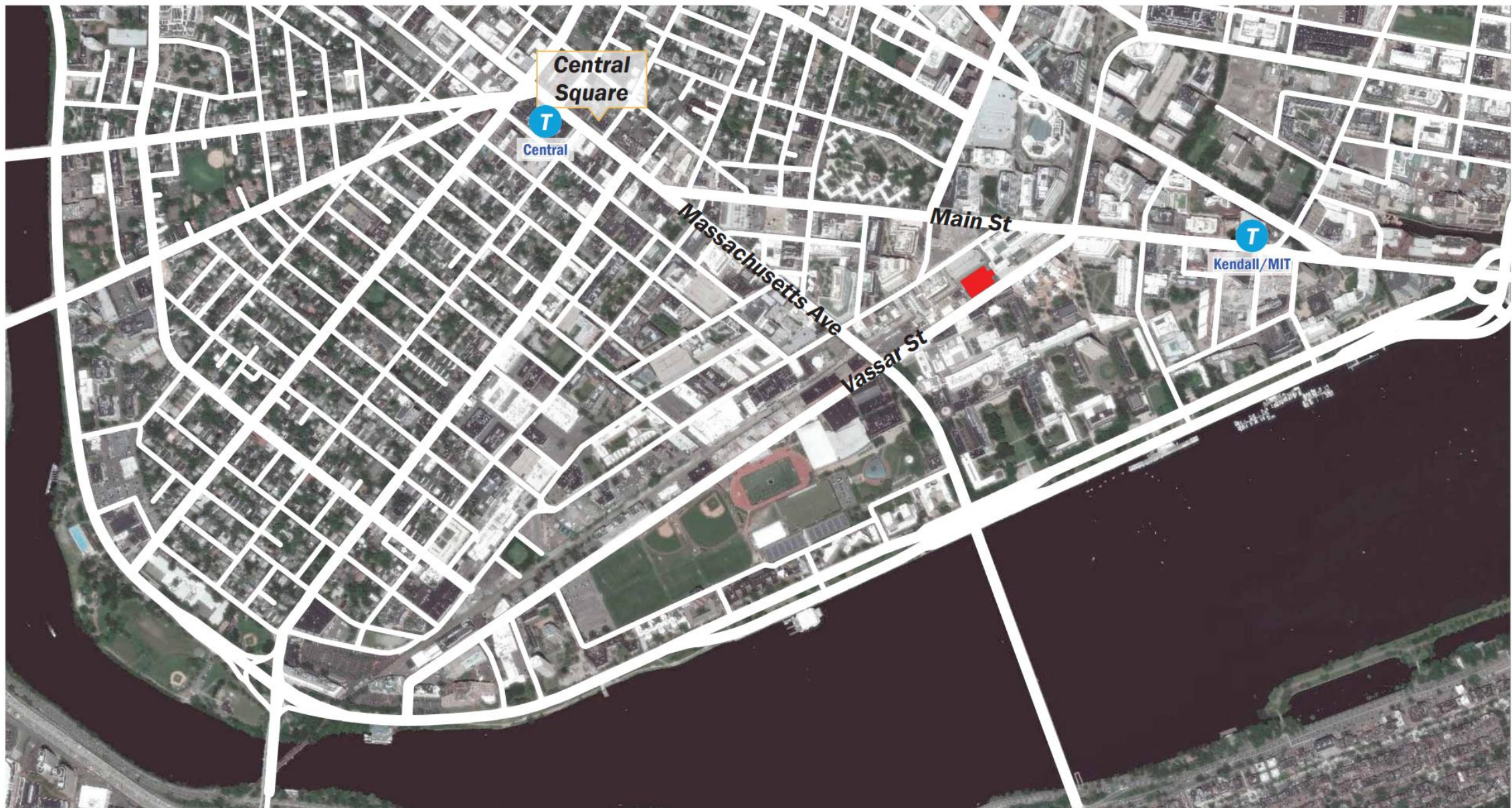






# Development Review: 51 Vassar St

*MIT*



Source Info: SOM

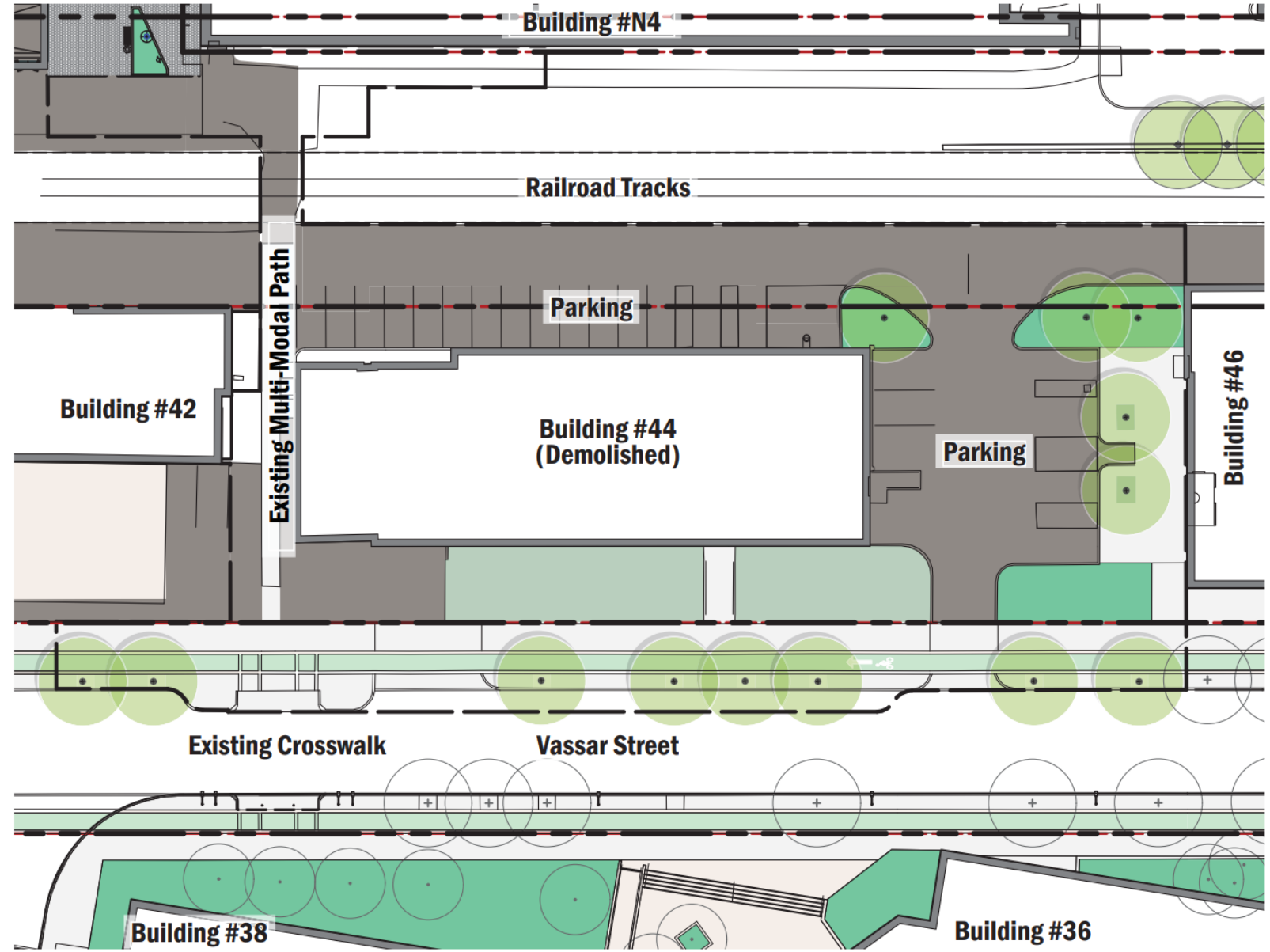
 Project Site

 Transit Station

Figure #1.1  
Site Context

SOM

MIT Stephen A. Schwarzman  
College of Computing  
Cambridge, Massachusetts



Source Info: SOM

- Line of Work
- Property Line
- Vegetation / Landscape

Figure #1.3a  
Existing Conditions Plan



MIT Stephen A. Schwarzman  
College of Computing  
Cambridge, Massachusetts



Source Info: SOM

Figure #1.4b  
Existing Conditions Site Photos  
Building #44  
MIT Stephen A. Schwarzman  
College of Computing  
Cambridge, Massachusetts

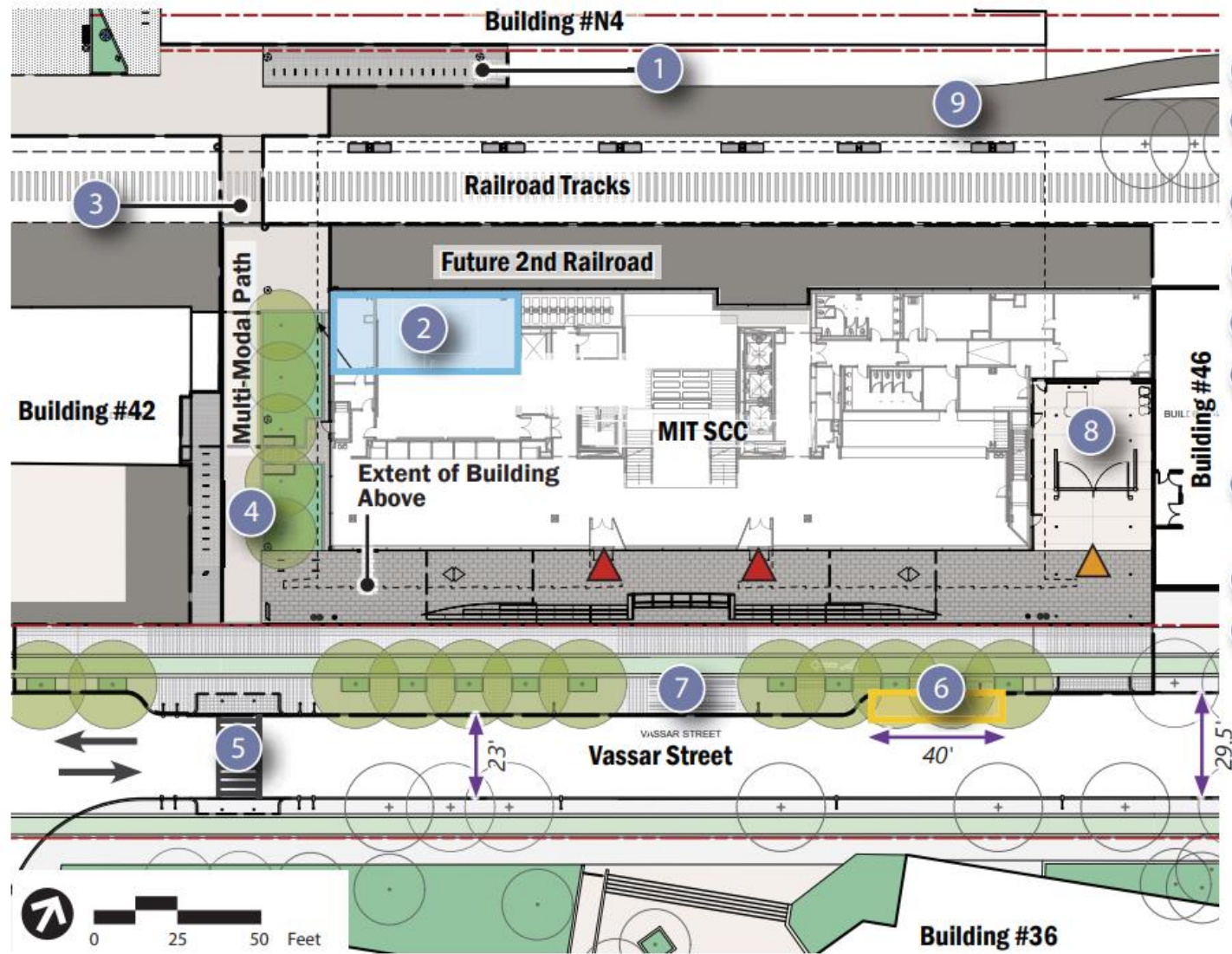




Source Info: SOM

Figure #1.4c  
Existing Conditions Site Photos  
Multi-modal Paths  
**MIT Stephen A. Schwarzman  
College of Computing  
Cambridge, Massachusetts**

SOM



Site Planning Accomodations

- 1 Short-term bike parking spaces area 1
- 2 Bike parking room located in the base-ment level.
- 3 Retain crossing and future connections to the Grand Junction Multi-use Path.
- 4 Short-term bike parking spaces area 2
- 5 Existing crosswalk to remain.
- 6 Two 2-hour metered parking spaces to be re-assigned as a 15-minute loading zone (passenger pick-up/drop-off).
- 7 Curb Extension to replace three 2-hour metered parking spaces and existing curb cut.
- 8 Proposed Loading Dock
- 9 Future Grand Junction Multi-use Path

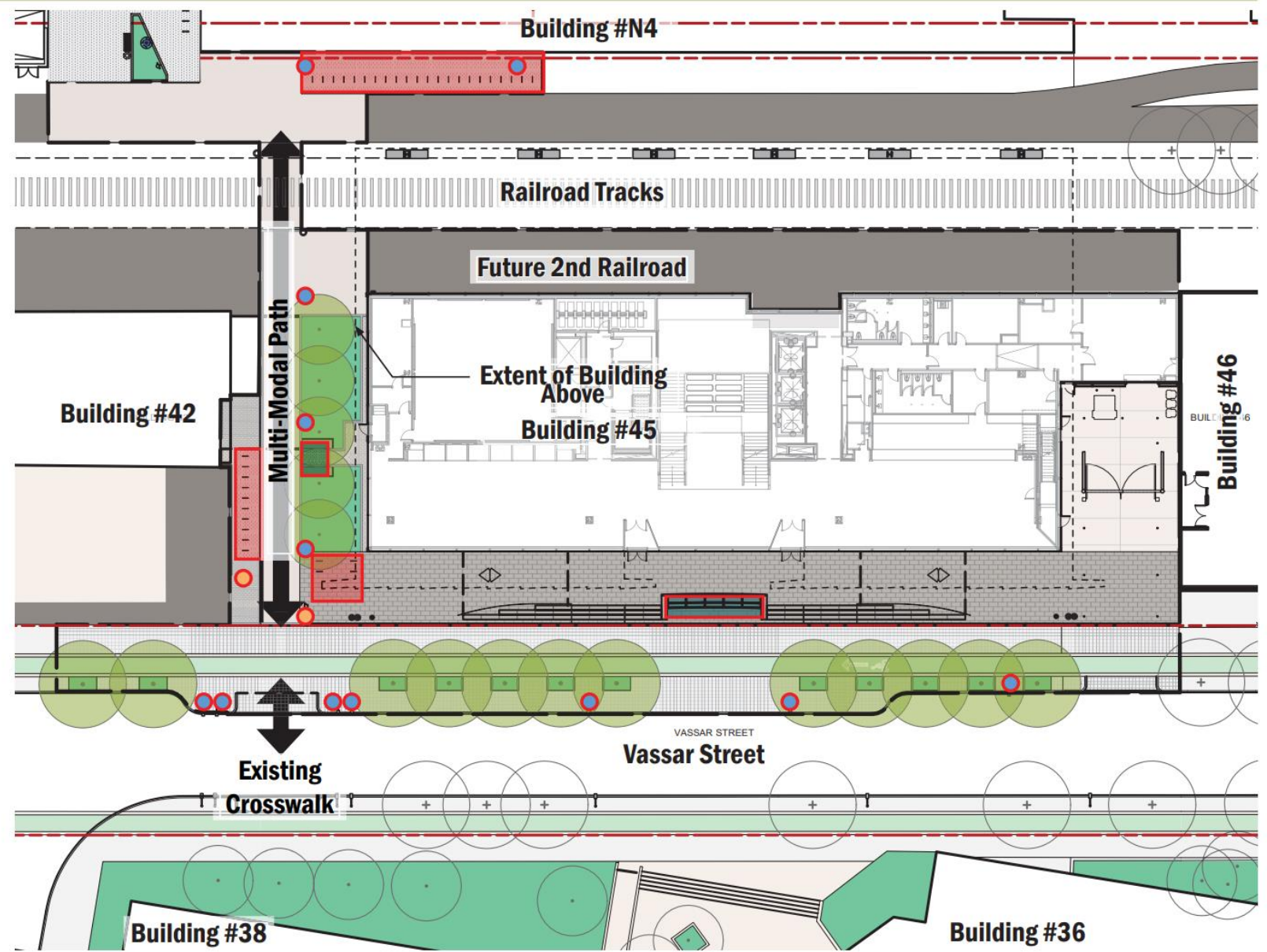
Base provided by SOM

- |   |   |
|---|---|
|  Pedestrian Access |  Property Line |
|  Loading Dock      |  Line of Work  |



Figure 3  
Site Plan

**MIT Stephen A. Schwarzman  
College of Computing  
Cambridge, Massachusetts**



Source Info: SOM

- Line of Work
- Property Line
- Vegetation / Landscape
- Bike Parking
- Seating

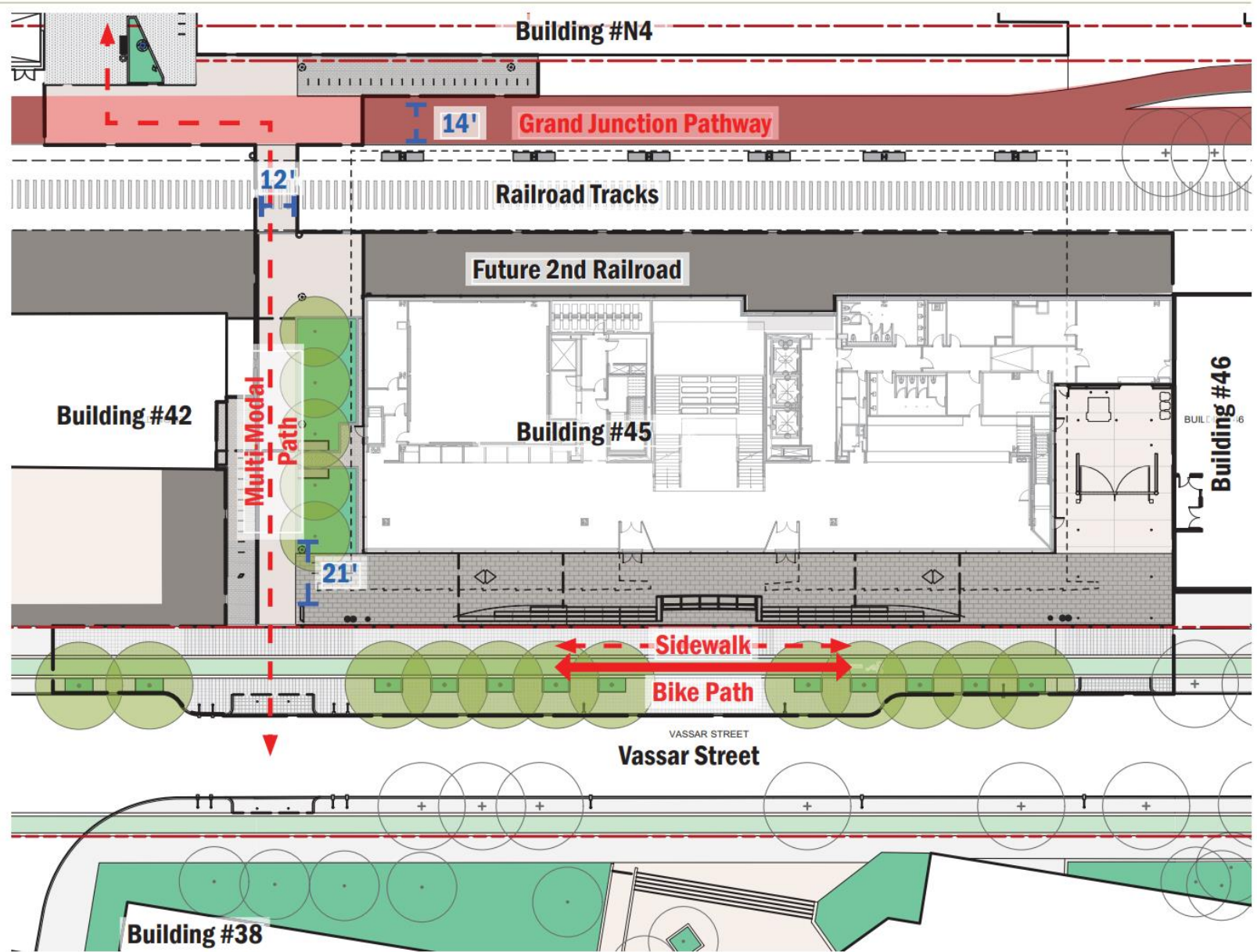
- Lighting
- Signage

Figure #1.11  
Landscape Plan

SOM

MIT Stephen A. Schwarzman  
College of Computing  
Cambridge, Massachusetts

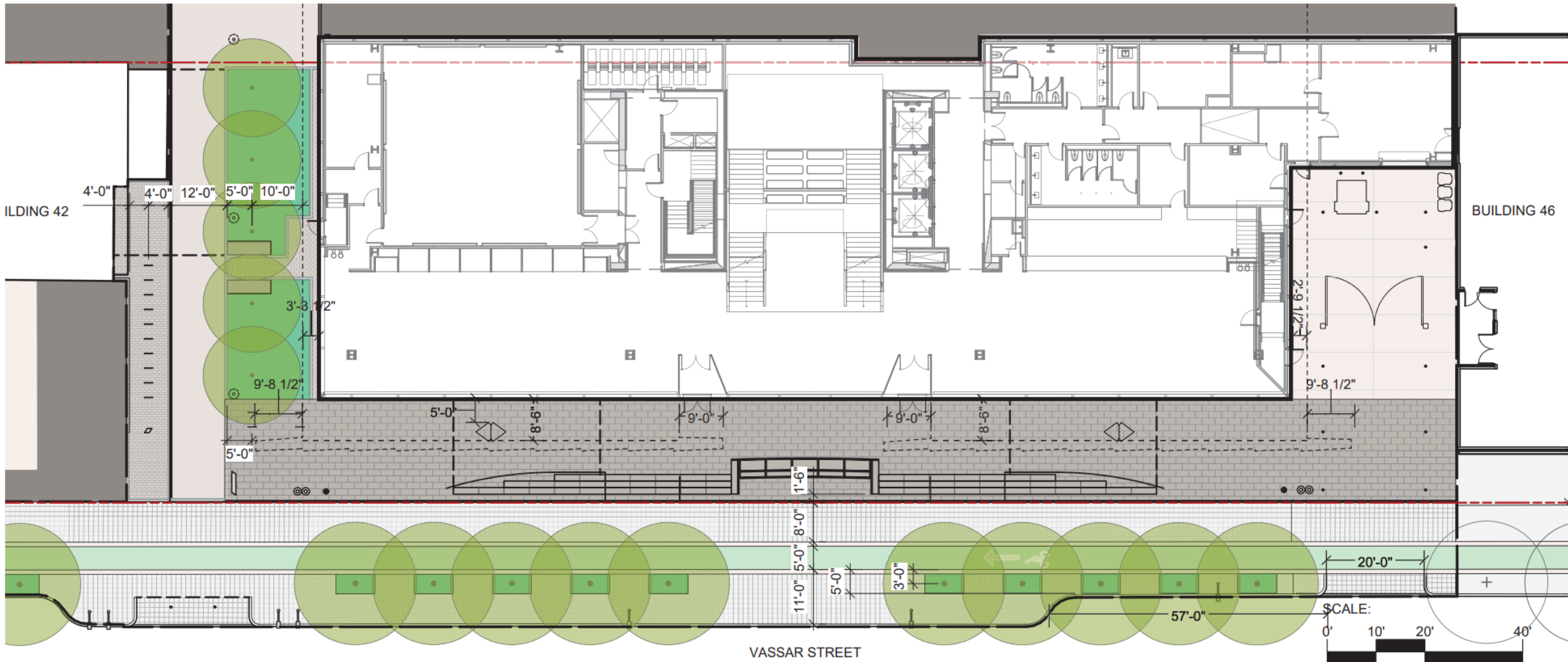




Source Info: SOM

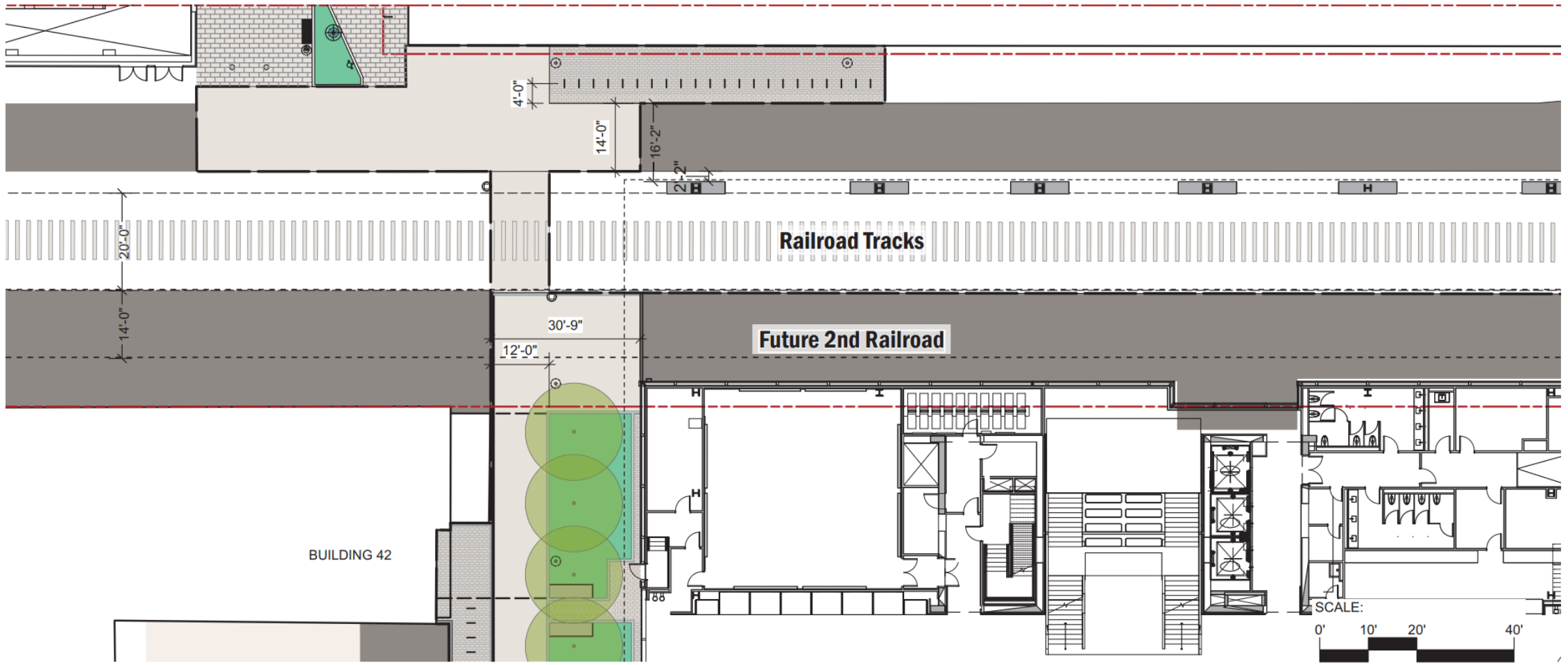
- Line of Work
- Property Line
- Vegetation / Landscape

Figure #1.13  
Site Circulation Plan



- Source Info: SOM
- Line of Work
  - Property Line
  - Vegetation / Landscape

Figure #1.112a  
 Enlarged Plan - Vassar Street



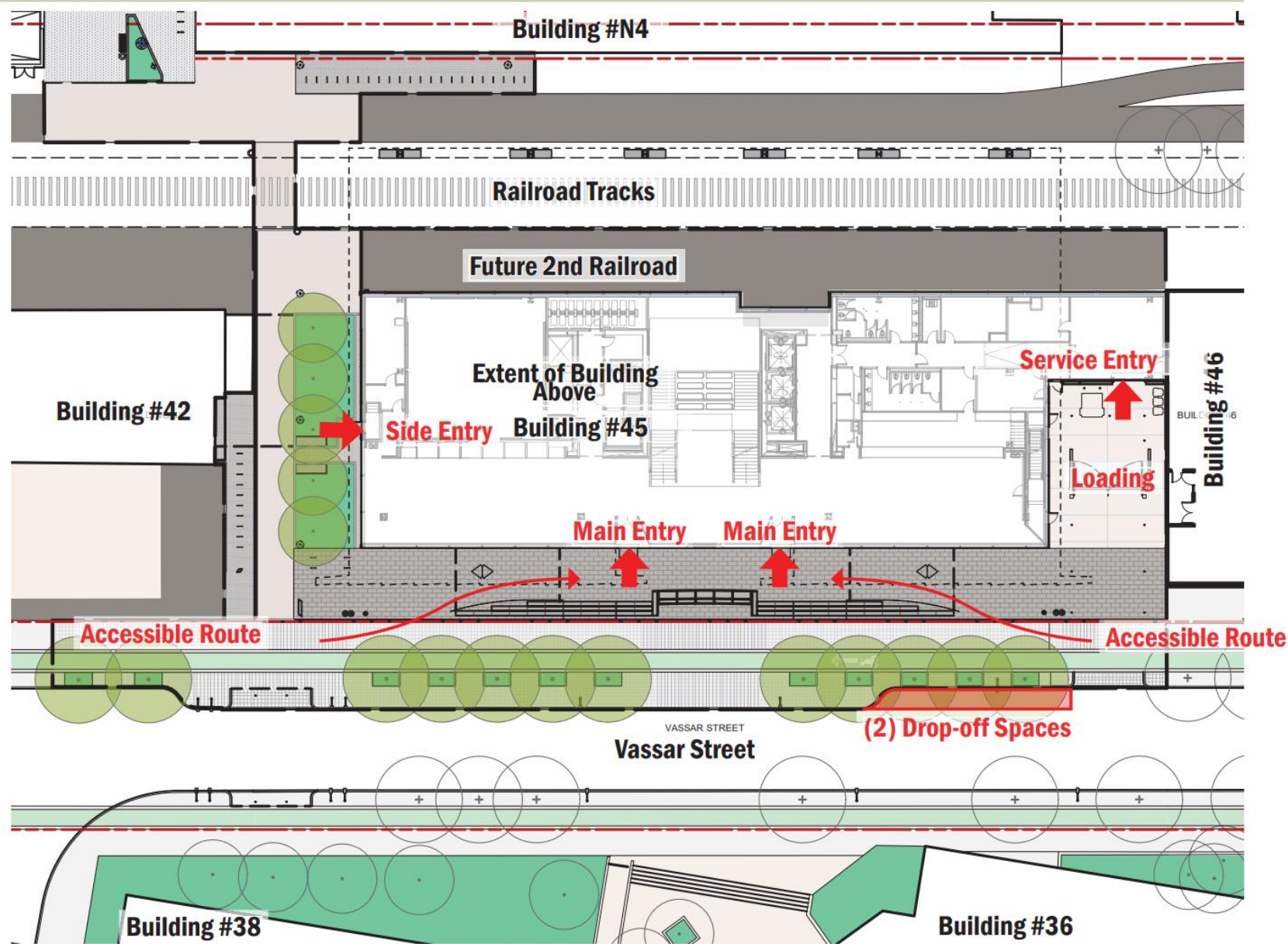
Source Info: SOM

- Line of Work
- - - Property Line
- Vegetation / Landscape

Figure #1.12b  
Enlarged Plan - Grand Junction Pathway



MIT Stephen A. Schwarzman  
College of Computing  
Cambridge, Massachusetts



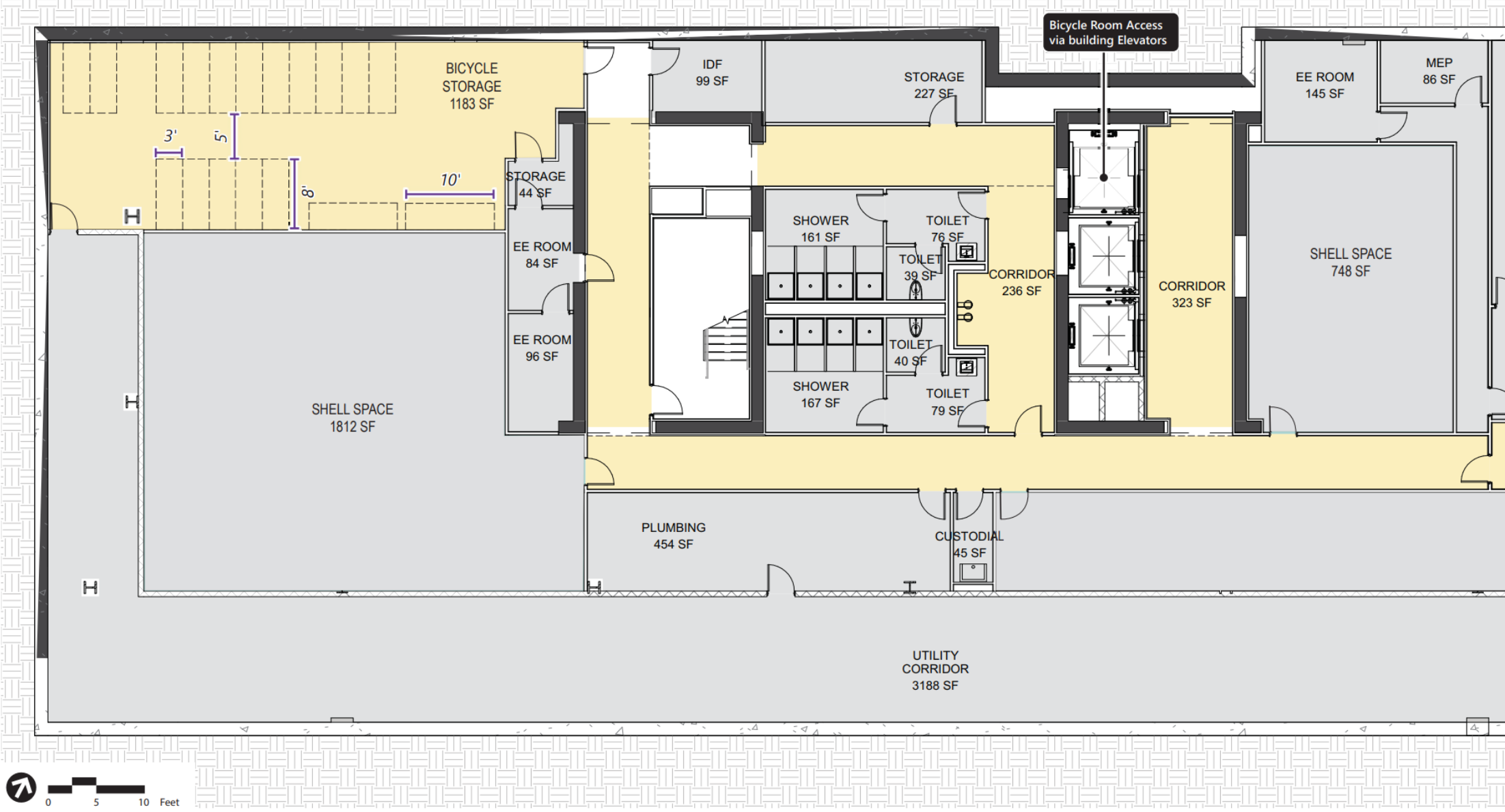
Source Info: SOM

- Line of Work
- Property Line
- Vegetation / Landscape

Figure #1.14  
Building Access



MIT Stephen A. Schwarzman  
College of Computing  
Cambridge, Massachusetts



Base provided by SOM



Figure 3a  
Bicycle Storage Room Plan

MIT Stephen A. Schwarzman  
College of Computing  
Cambridge, Massachusetts



Source Info: SOM

Figure #1.9a  
South Building Elevation

SOM

MIT Stephen A. Schwarzman  
College of Computing  
Cambridge, Massachusetts



Source Info: SOM

Figure #1.9b  
West Building Elevations

SOM

MIT Stephen A. Schwarzman  
College of Computing  
Cambridge, Massachusetts



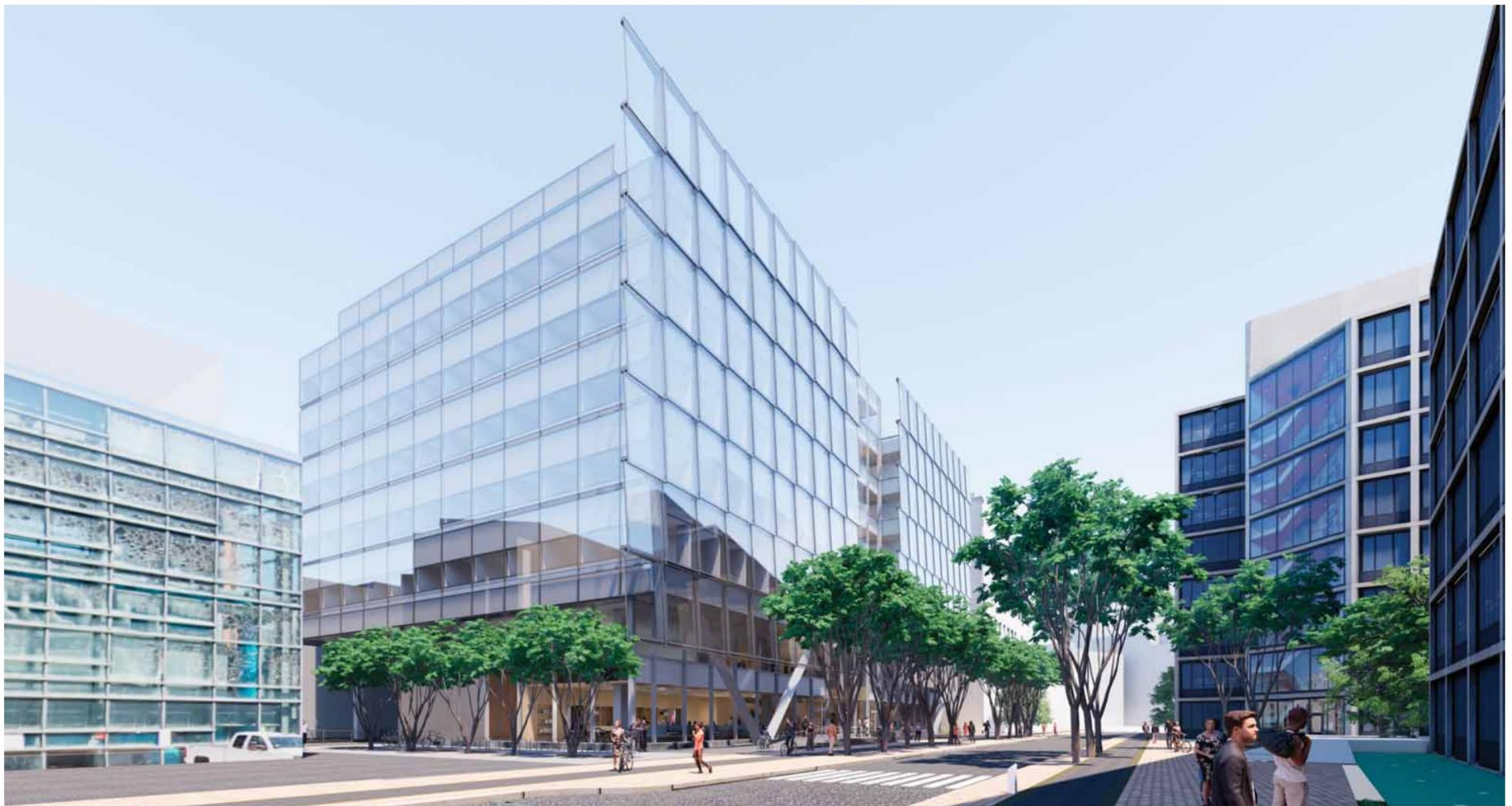
Source Info: SOM

Figure #1.9c  
North Building Elevation

SOM

MIT Stephen A. Schwarzman  
College of Computing  
Cambridge, Massachusetts





Source Info: SOM

Figure #1.10c  
Project Renderings & Perspectives  
West Approach  
**MIT Stephen A. Schwarzman  
College of Computing  
Cambridge, Massachusetts**

SOM



Source Info: SOM

Figure #1.10d  
Project Renderings & Perspectives  
Grand Junction Pathway  
**MIT Stephen A. Schwarzman  
College of Computing  
Cambridge, Massachusetts**

SOM



Source Info: SOM

Figure #1.10f  
Project Renderings & Perspectives  
West Entry  
**MIT Stephen A. Schwarzman  
College of Computing  
Cambridge, Massachusetts**

SOM



Source Info: SOM

Figure #1.10h  
Project Renderings & Perspectives  
Vassar Street Frontage  
**MIT Stephen A. Schwarzman  
College of Computing  
Cambridge, Massachusetts**

SOM



**Development Review:  
269-301 Vassar St**

*MIT*



**1.3 EXISTING CONDITIONS** SITE CONTEXT MAP  
MIT WEST CAMPUS GRADUATE DORMITORY PROJECT



① MIT POLICE STATION

② WESTGATE CAMPUS

③ FORT WASHINGTON PARK

④ VASSAR STREET TREES

⑤ SIMMONS COURTYARD

⑥ CHILDCARE CENTER

⑦ MIT HOUSING



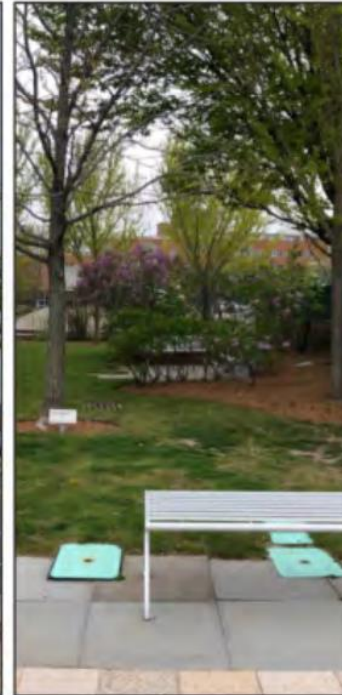
URBAN APPROACH



Google



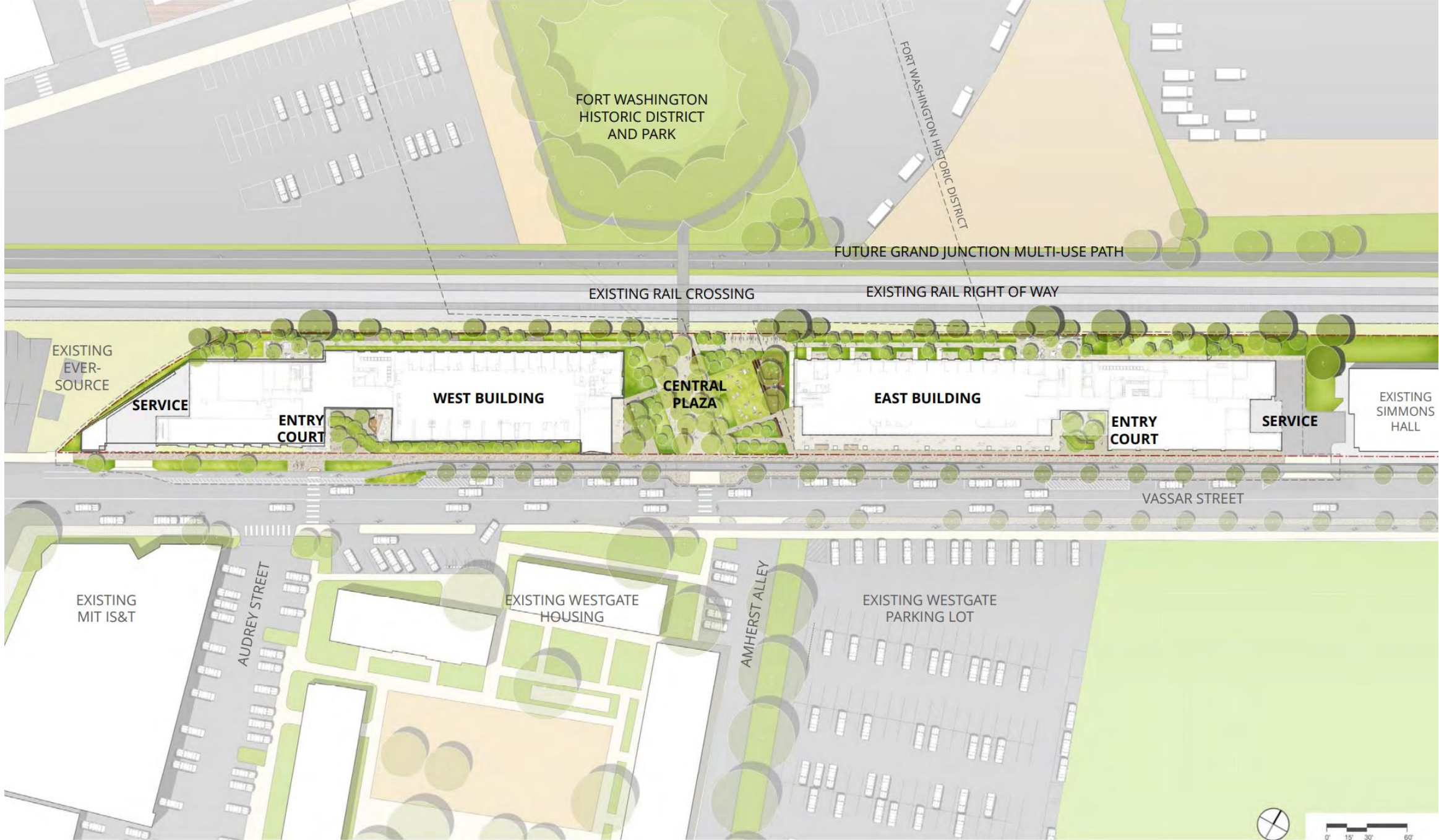
CIVIC APPROACH



FRONT YARD APPROACH

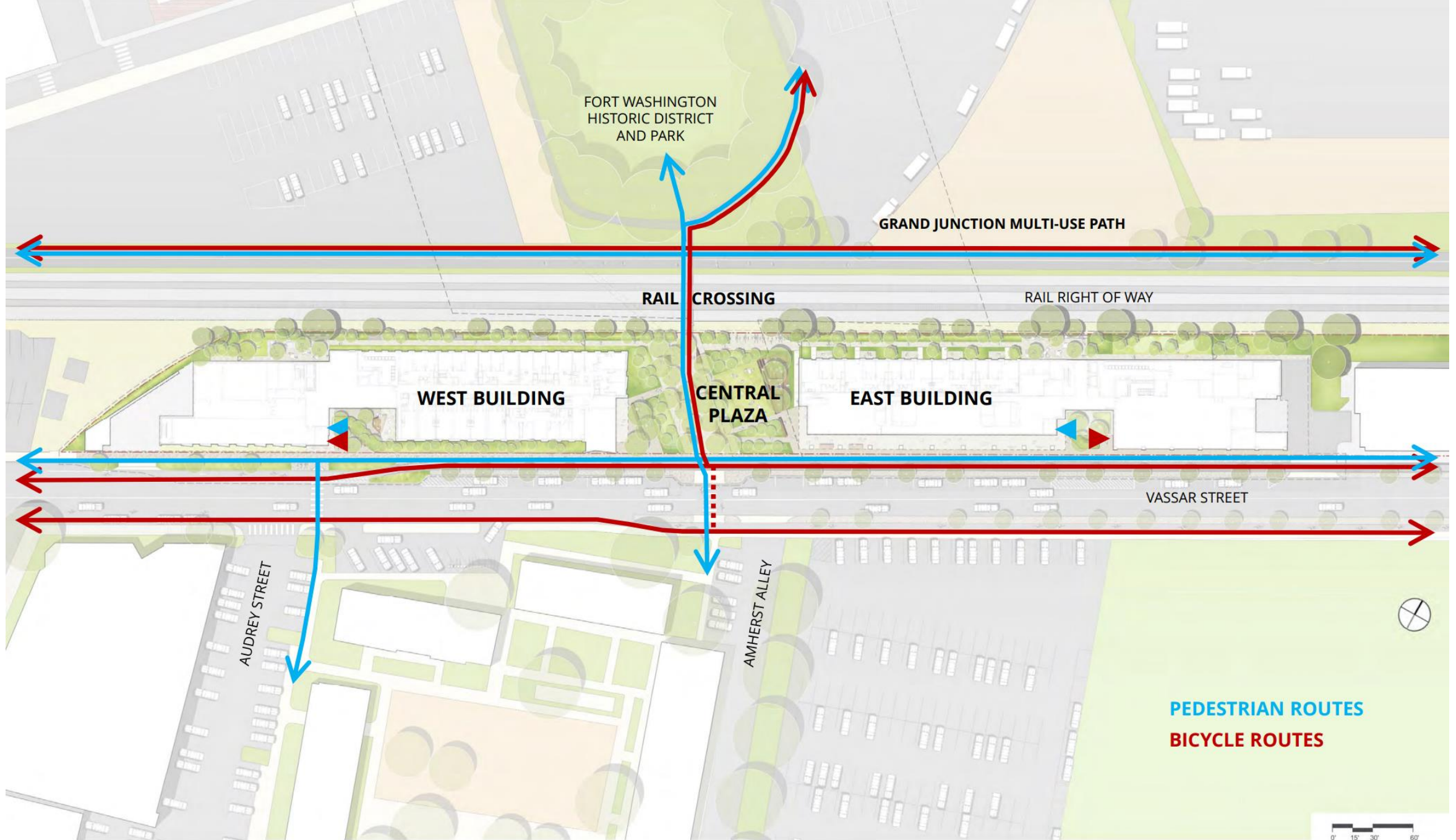


1.4 EXISTING CONDITIONS SITE PHOTOS



**2.2 PROPOSED DESIGN** OVERALL SITE PLAN  
 MIT WEST CAMPUS GRADUATE DORMITORY PROJECT

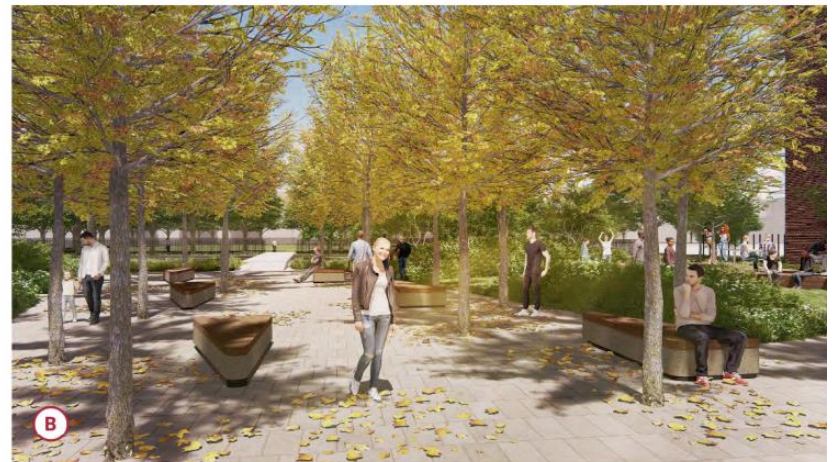




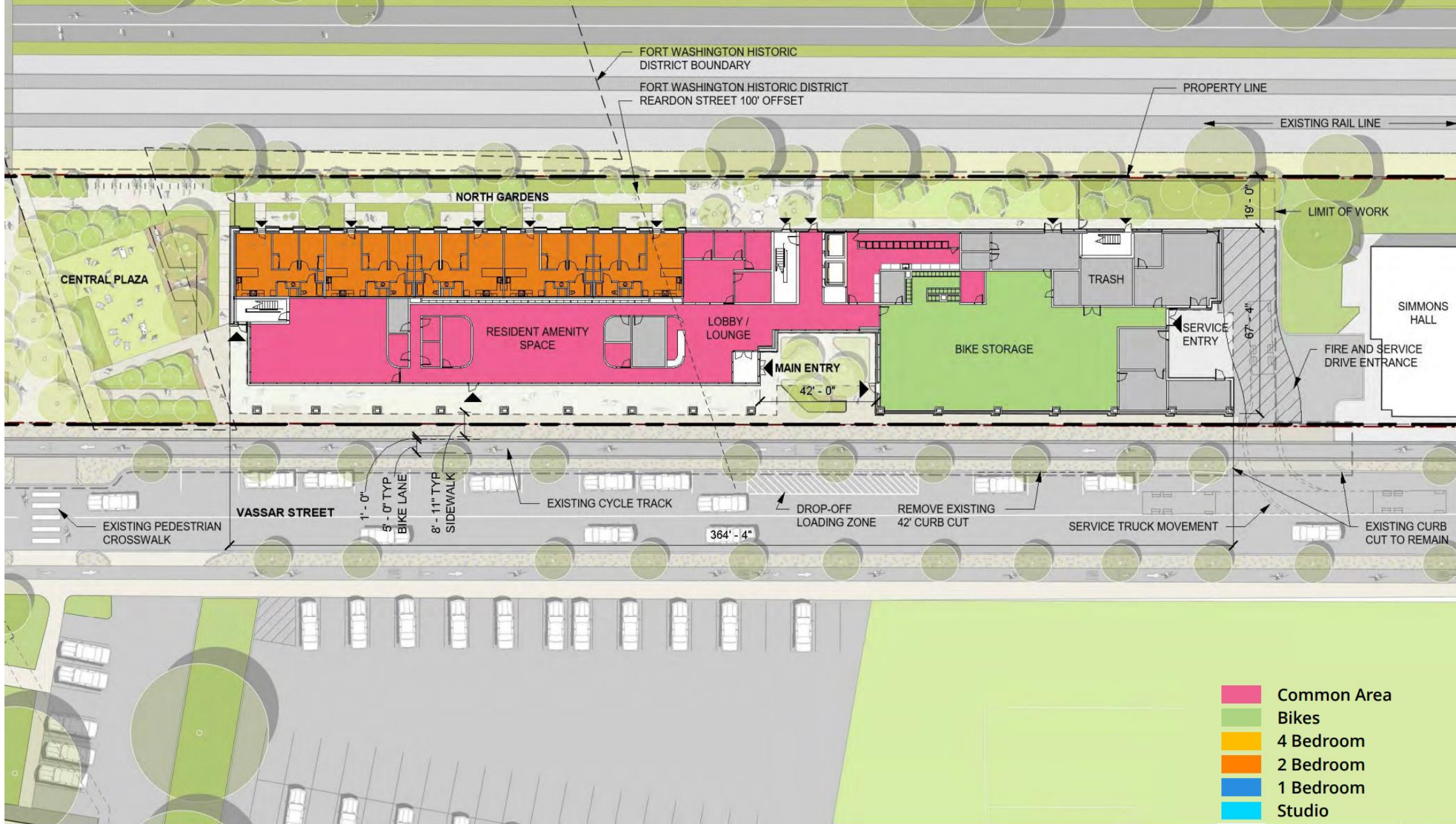


\*ALL TREES WITHIN PAVEMENT TO BE PLANTED WITHIN CONTINUOUS AREA OF STRUCTURAL SOIL BELOW

**2.5 PROPOSED DESIGN** CENTRAL PLAZA  
MIT WEST CAMPUS GRADUATE DORMITORY PROJECT

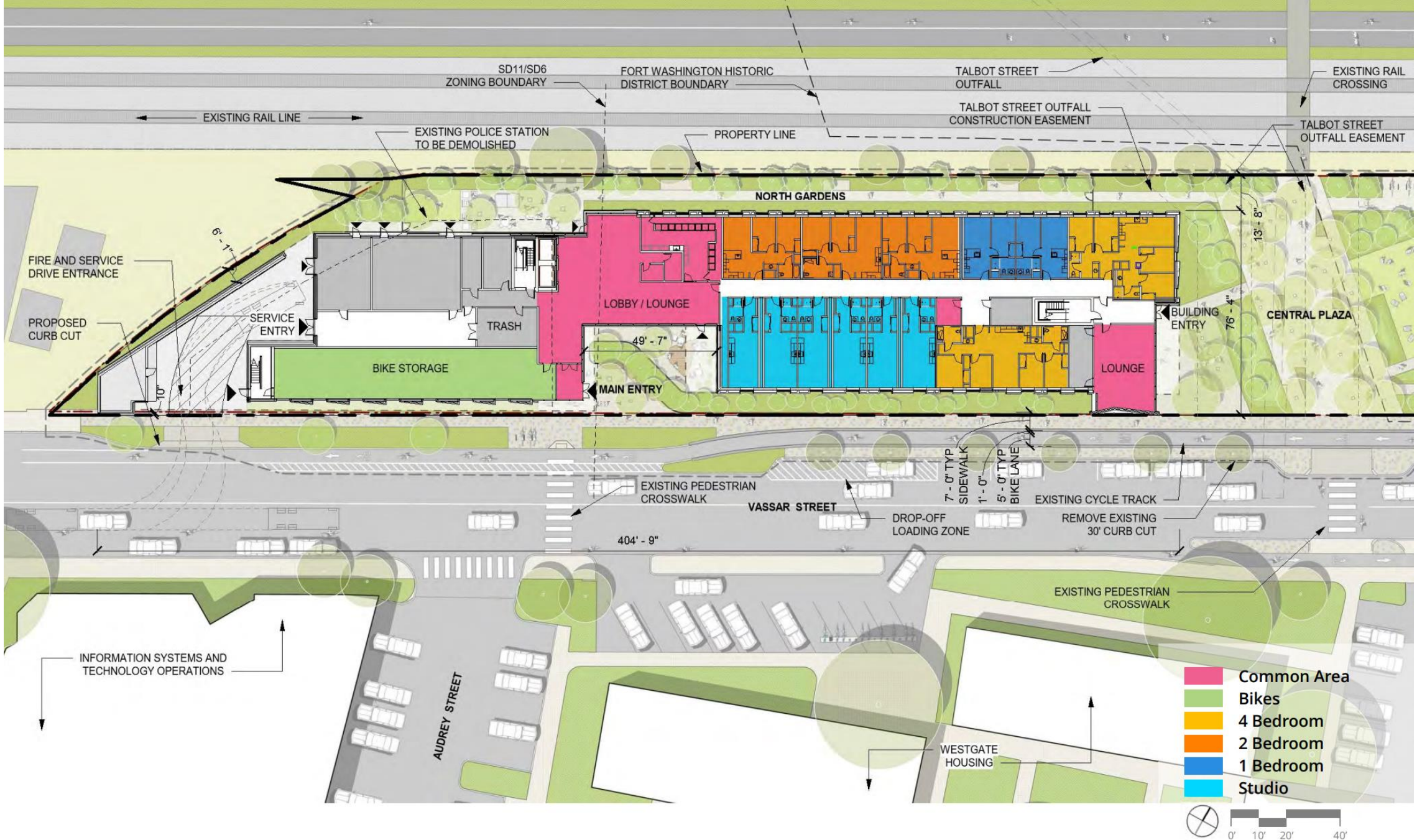


- ① PLAZA PATH
- ② URBAN GROVE
- ③ SEATING GROVE
- ④ LAWN
- ⑤ RAISED PLATFORM
- ⑥ PLANTED MOUND
- ⑦ ENTRY PLAZA



**2.6 PROPOSED DESIGN** GROUND FLOOR PLAN - EAST  
MIT WEST CAMPUS GRADUATE DORMITORY PROJECT





**2.7 PROPOSED DESIGN** GROUND FLOOR PLAN - WEST  
MIT WEST CAMPUS GRADUATE DORMITORY PROJECT

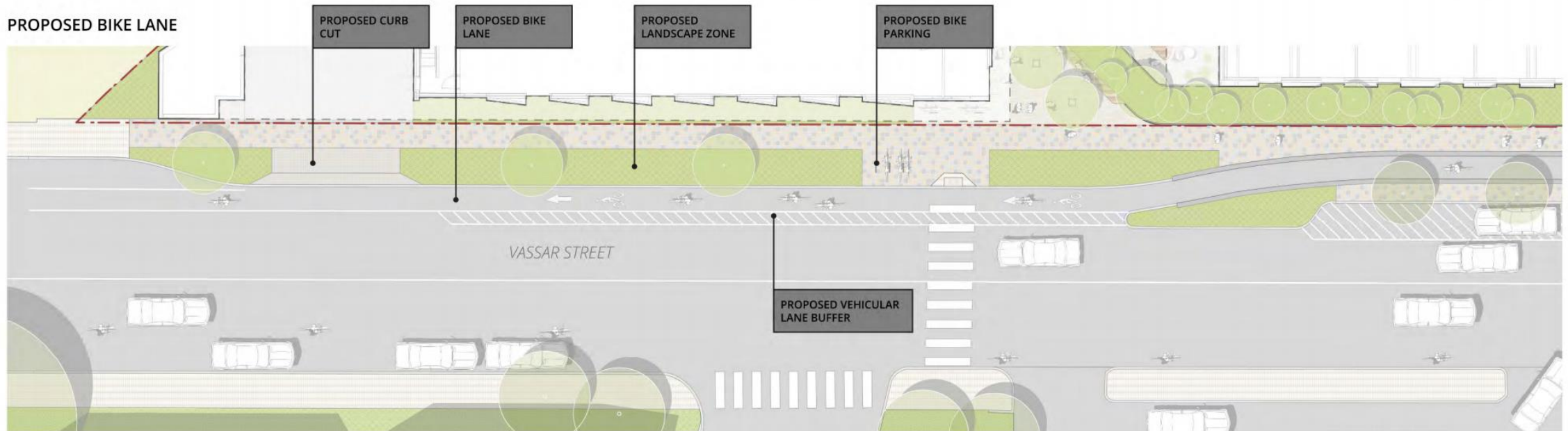
- Common Area
- Bikes
- 4 Bedroom
- 2 Bedroom
- 1 Bedroom
- Studio

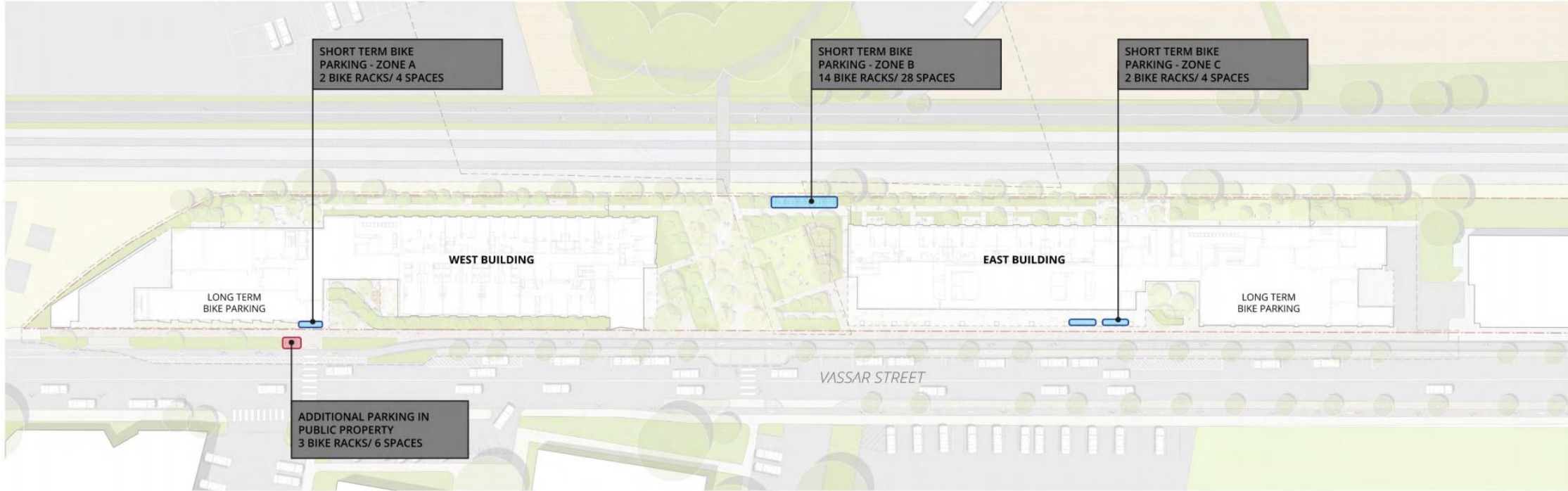


**EXISTING BIKE LANE**

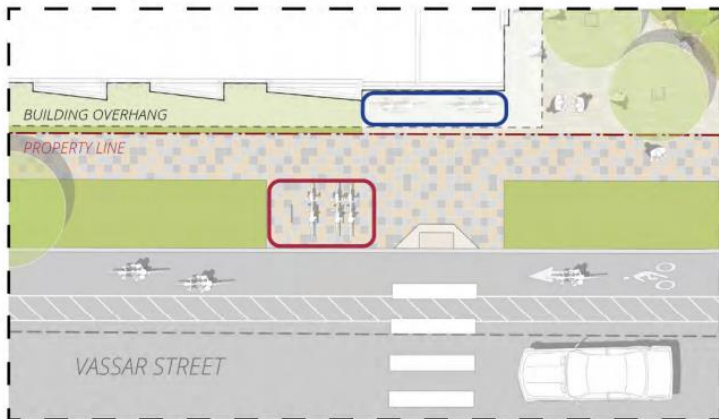


**PROPOSED BIKE LANE**

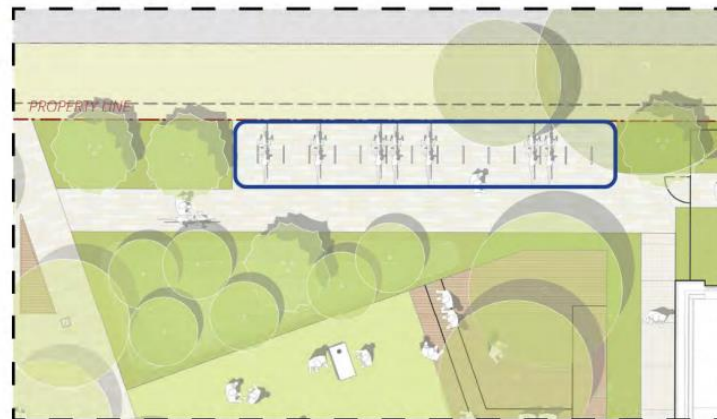




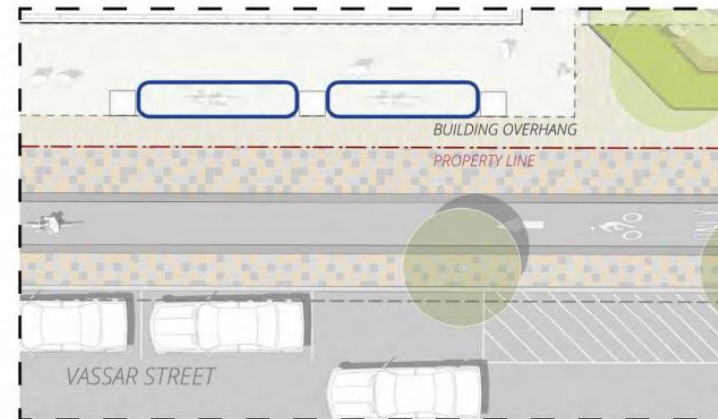
SHORT TERM BIKE PARKING A  
2 BIKE RACKS/ 4 SPACES

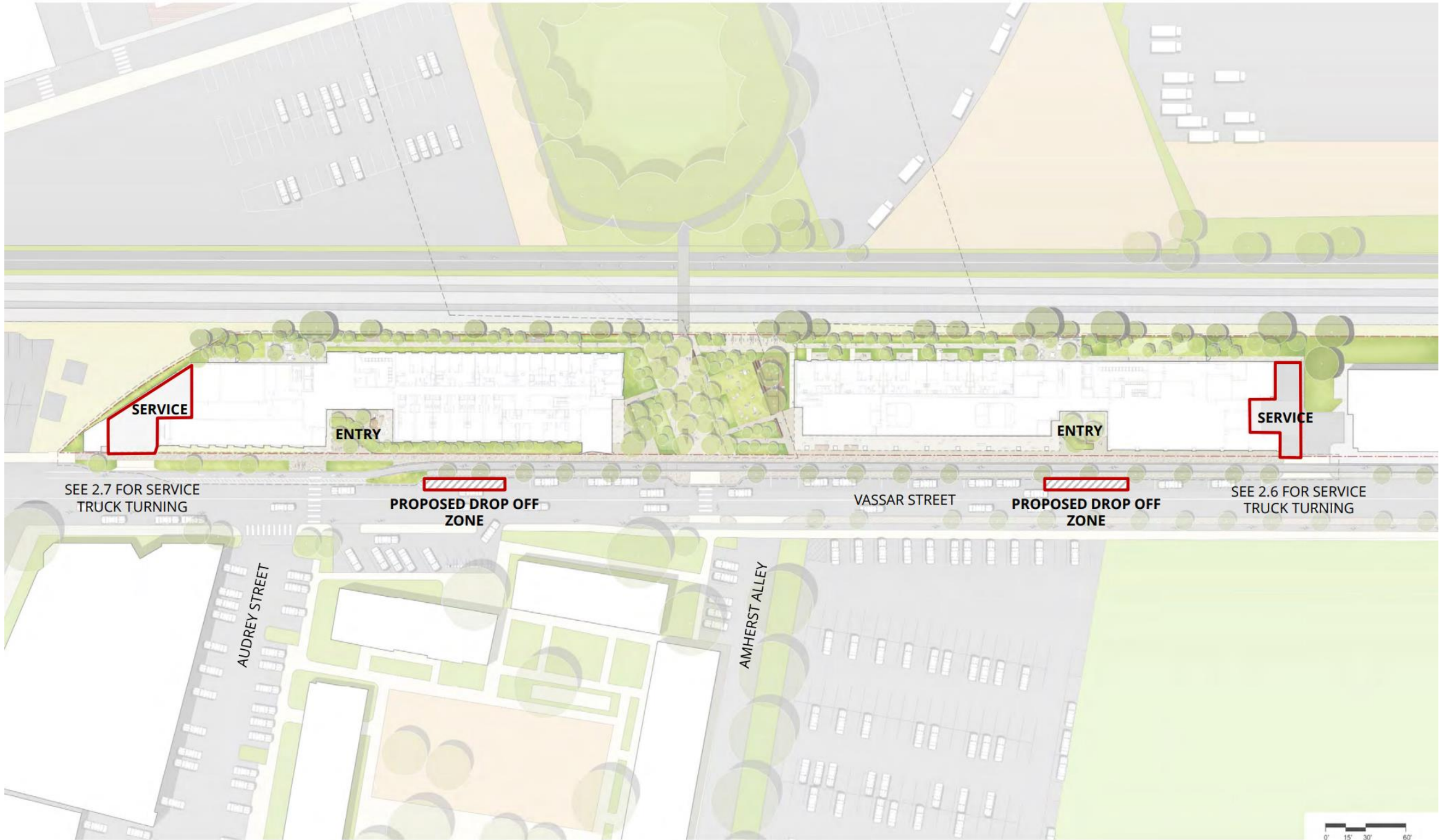


SHORT TERM BIKE PARKING B  
14 BIKE RACKS/ 28 SPACES



SHORT TERM BIKE PARKING C  
2 BIKE RACKS/ 4 SPACES







**3.4 RENDERING** WEST BUILDING LOUNGE AT CENTRAL PLAZA  
MIT WEST CAMPUS GRADUATE DORMITORY PROJECT







**3.3 RENDERING** EAST BUILDING LOGGIA  
MIT WEST CAMPUS GRADUATE DORMITORY PROJECT





**3.9 RENDERING** CENTRAL PLAZA AERIAL  
MIT WEST CAMPUS GRADUATE DORMITORY PROJECT





**3.10 RENDERING** CENTRAL PLAZA LOOKING NORTHWEST  
MIT WEST CAMPUS GRADUATE DORMITORY PROJECT





# **Other Development Project Reviews**

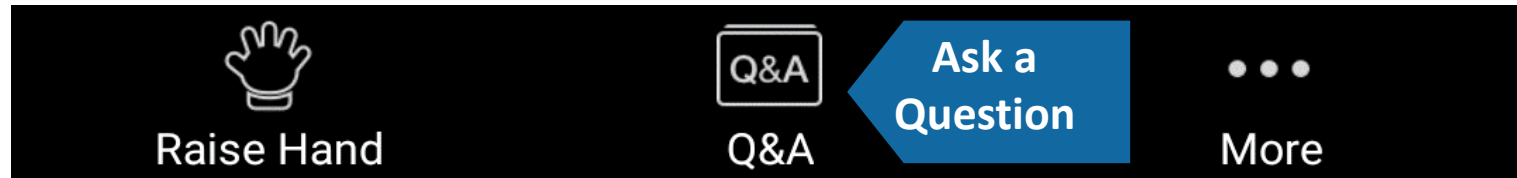


# Public comment

# Public Comment Instructions

- Use the "Raise Hand" button to signal you have a question/comment. A staff member will then enable you to unmute yourself.
  - \*9 to Raise Hand by phone
  - \*6 to Mute/Unmute by phone
- Questions can also be submitted using the Q&A button.

Bottom Panel of  
Zoom Screen





# Other Announcements



**Thank You**