

City of Cambridge

# Net Zero Transportation Plan: Advisory Group Meeting #6

Wednesday, August 9, 2023





# Welcome!

*Check-in question: What is one thing you have seen, read, or watched that has changed how you think about equity?*

Meeting purpose:

Discuss how to center racial equity and mobility justice in the Net Zero Transportation Plan

1. Clarify what outcomes we are working toward to make transportation more equitable; and
2. Think about ways to measure whether strategies meet these outcomes.

How should the Net Zero  
Transportation Plan make  
transportation more equitable?



# Improving mobility options for everyone requires equity-focused planning

How we set up our city affects *what options* we have, *how it works*, and *who has access* to it.

For this reason, planning with an **anti-racist** and **equitable** focus will lead to *more options* that work *more often* for *more people*.

This is the foundational principle of our effort, as we work to achieve the project goals of:



Improving  
Mobility




Reducing  
Emissions



# Ideas you have raised so far about improving transportation equity

- Make predictable and reliable transportation available to everyone
    - Unreliable transportation is harder for people who are already marginalized
  - Give people many good options to get where they need to go
    - Reduce costs of transportation (e.g., Charlie Cards that are free or free for those with demonstrated low income)
  - Ensure that benefits and costs are distributed equitably
    - Larger institutions that have built wealth and made climate change worse should take more responsibility for reducing emissions
    - People should feel safe and like they belong as they move around the city
- ... This is just a beginning of a framework. When we get to discussion, please add to this list

How have others thought  
about equity in transportation  
planning?



# Examples of equity frameworks

The next slides outline two frameworks:

1. The Greenlining Institute's Mobility Equity Framework
2. Los Angeles Metro (public transit)'s Equity Platform and Rapid Equity Assessment tool

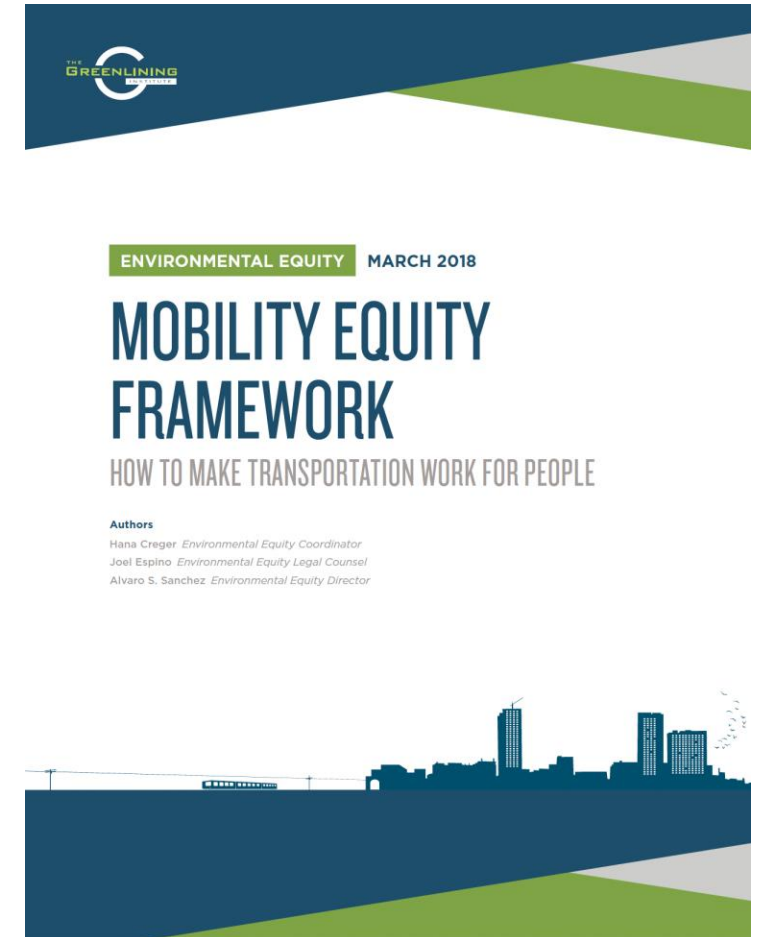
As you listen, think about:

- What you like about each example
- What might be missing
- What might be important for us to consider in Cambridge
- What additional questions these frameworks bring up



# Greenlining Institute Mobility Equity Framework

- Under this framework, transportation that has *mobility equity*:
  - increases access to high quality mobility options
  - reduces air pollution
  - enhances economic opportunity in low-income communities of color
- To achieve mobility equity, we must prioritize:
  - **Social equity** – the fair and just distribution of societal benefits and burdens
  - **Community power** – the ability of marginalized communities to influence decisions in a way that addresses their needs and concerns

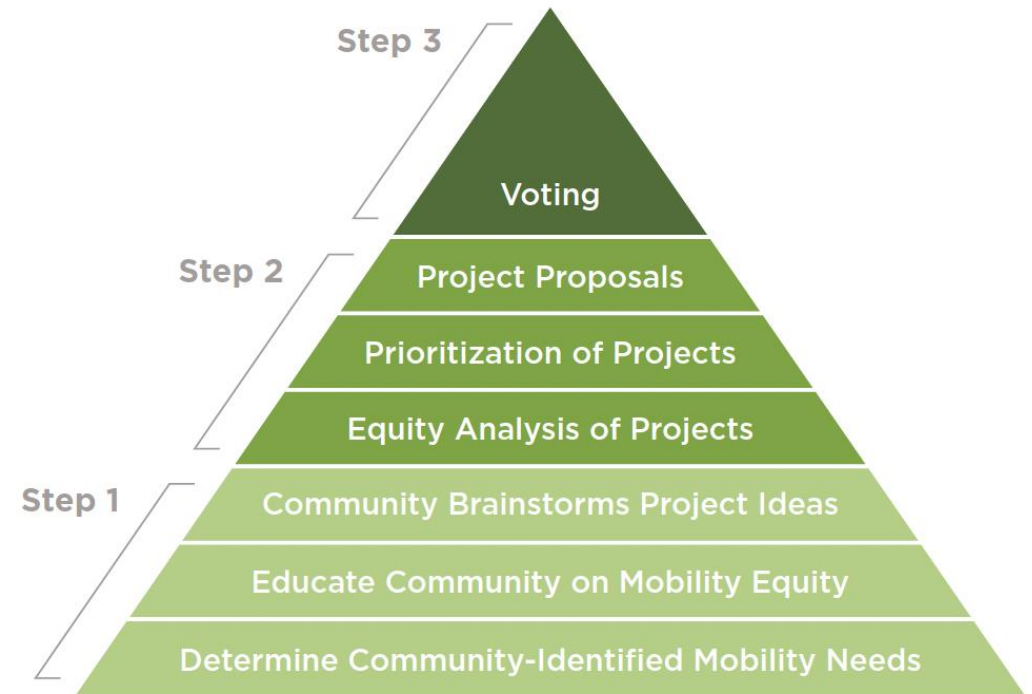




# Greenlining Institute Mobility Equity Framework: 3-step process

The *Mobility Equity Framework* uses a three-step process for making transportation planning decisions:

1. Identify the **mobility needs** of a specific low-income community of color.
2. Conduct the **mobility equity analysis** to prioritize the transportation modes that best meet those needs while maximizing benefits and minimizing burdens.
3. Place **decision-making power** in the hands of the local community



# Greenlining Institute Mobility Equity Framework: 12 equity indicators

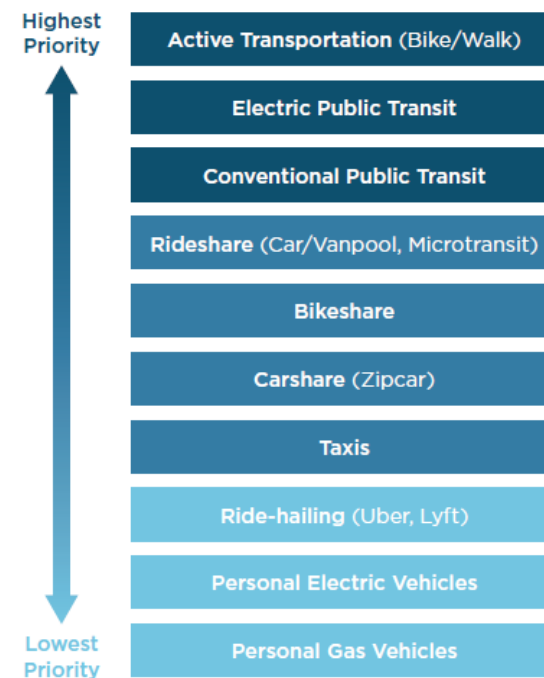
- The *Mobility Equity Framework* proposes 12 **indicators\*** that can be used to evaluate transportation options for equity

\*An indicator is something you can measure to track progress toward a goal

Goal	Equity indicator
I. Increase access to mobility	1. Affordability
	2. Accessibility
	3. Efficiency
	4. Reliability
	5. Safety
II. Reduce air pollution	6. Clean air and positive health benefits
	7. Reduction in greenhouse gases
	8. Reduction in Vehicle Miles Travelled
III. Enhance economic opportunity	9. Connectivity to places of employment, education, services, and recreation
	10. Fair labor practices
	11. Transportation-related employment opportunities
	12. Inclusive local business & economic activity

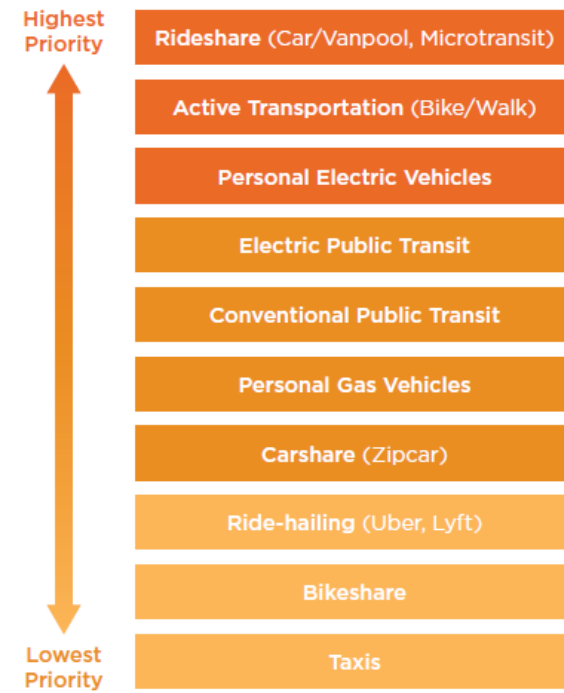
# Greenlining Institute Mobility Equity Framework: Prioritizing options based on indicators

- Communities can use these indicators to evaluate and prioritize travel modes and projects
  - Communities can change indicators and weight them differently based on their needs and context
  - The examples on the right show how options *could* be prioritized for **urban** and **suburban** settings
- \*Any proposal would go before the community to decide



\*Illustrative example when all 12 equity indicators are weighted equally

\*Assuming that all transportation modes are available in urban areas

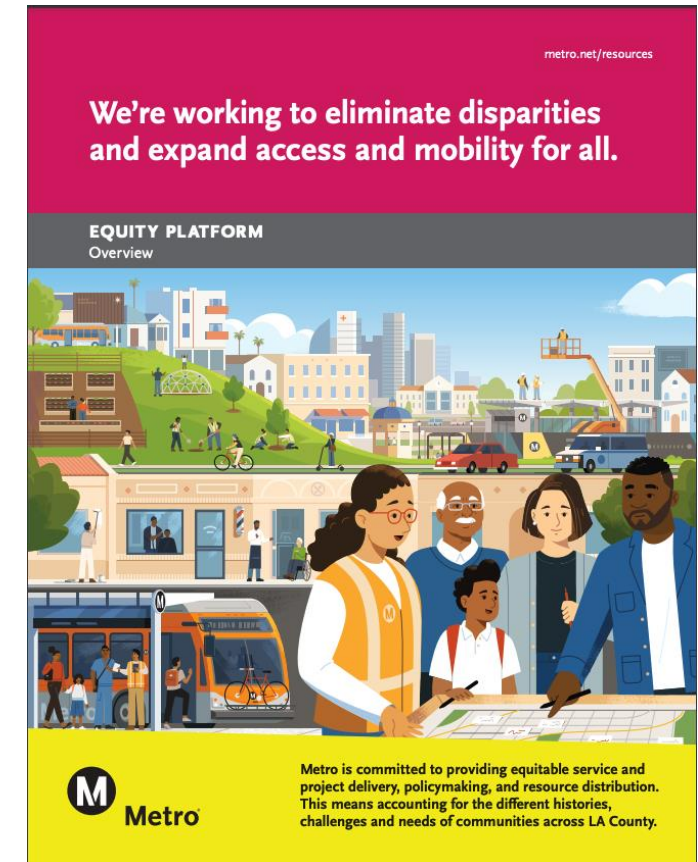


\*Illustrative example when all 12 equity indicators are weighted equally

\*Assuming that all transportation modes are available in rural areas

# Los Angeles Metro's Equity Platform

- LA Metro's *Equity Platform* guides how the agency:
  - Addresses inequities
  - Creates more equitable access to opportunity
- It has 4 main areas of action:
  - Define and Measure
  - Listen and Learn
  - Focus and Deliver
  - Train and Grow



# Los Angeles Metro's Equity Platform

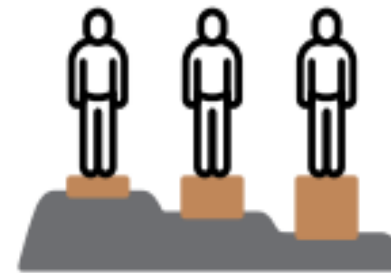
The reality of historical inequities has led LA Metro to strive for justice to achieve communities where:

- underlying barriers are removed,
- all people enjoy access to opportunities, and
- disparities do not exist.

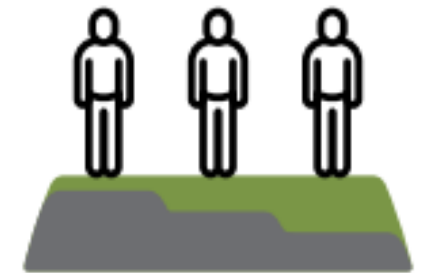
*Equality is not the same as equity, and ultimately we're striving for justice.*



**EQUALITY**



**EQUITY**



**JUSTICE**

# LA Metro's Rapid Equity Assessment

- LA Metro developed the tool during the COVID-19 pandemic to allow for **fast-paced** decisions
- The tool assists Metro staff in quickly prioritizing **equity opportunities**, which **enhance positive outcomes** or **reduce negative consequences**
  - Staff use it as a first step for Metro projects, programs, services, and decisions
  - Staff also have access to longer-term equity assessment tools for situations that require them



# LA Metro's Rapid Equity Assessment questions (September 2022)

**1. Will the decision being made benefit or impact any of the following groups?** Will these impacts be employee or public-facing?  Employee  Public

- |  |   |
|--|---|
| <input type="checkbox"/> Black, Indigenous, and/or People of Color   | <input type="checkbox"/> People with disabilities   |
| <input type="checkbox"/> Low Income Households (Avg. income < \$60K)   | <input type="checkbox"/> Equity Focus Communities**   |
| <input type="checkbox"/> Other marginalized communities or communities facing disparities (Limited English Proficiency, LGBTQ+, women, Older Adults, etc.) | <input type="checkbox"/> Minority or Women Owned Businesses, Disadvantaged Business Enterprises, or Disabled Veterans Business Enterprise |

**2. Who will benefit from and/or be burdened by this decision?** Are there barriers that will prevent some people from benefiting from this decision? (Ex: physical ability, affordability, etc.) Also explain the benefits of the decision.



# LA Metro's Rapid Equity Assessment questions (September 2022)

**3. Who may be harmed or burdened by this decision, even if unintentionally?** (Ex: certain users of the service, people living along the project area, etc.)

**4. How will this improve equity outcomes?** Are there any positive impacts for marginalized or vulnerable groups? Will this reduce negative impacts?

**5. What are your strategies to mitigate any potential negative consequences of this decision?** Please include specific examples related to community engagement, messaging, outreach, etc. If unknown now, revisit this tool if unintended negative consequences occur.



# LA Metro's Rapid Equity Assessment questions (September 2022)

**6. What community engagement and data informed your REA and how will you proceed to ensure equitable outcomes?** Discuss how community members, including those more vulnerable to negative impacts, were and will continue to be engaged, and how you will track impacts to impacted people over time.

**7. Summarize the impacts of your action, including potential benefits (Q2) and burdens (Q3) to marginalized or vulnerable groups, ability to improve equity outcomes (Q4), mitigation strategies, if needed, (Q5), and data and community engagement considerations (Q6).** Use this summary for any report, including a board report, or other document explaining the decision or recommendation.



# Questions and discussion about the examples

- *What do you like about these examples?*
- *What might be missing?*
- *What might be important for us to consider in Cambridge?*
- *What additional questions these frameworks bring up?*



# Ideas you have raised so far about improving transportation equity

- Make predictable and reliable transportation available to everyone
  - Unreliable transportation is harder for people who are already marginalized
- Give people many good options to get where they need to go
  - Reduce costs of transportation (e.g., Charlie Cards that are free or free for those with demonstrated low income)
- Ensure that benefits and costs are distributed equitably
  - Larger institutions that have built wealth and made climate change worse should take more responsibility for reducing emissions
- People should feel safe and like they belong as they move around the city



# Advisory Group brainstorm discussion

How can we make transportation in Cambridge more equitable through the Net Zero Plan Transportation Plan?

- What aspects of equity should we be thinking about?
- What features of Cambridge and its population are important to consider?

# Wrap-Up, Public Comment, & Next Steps





# Looking ahead in the Advisory Group process

- We've learned a lot and have much more to discuss! We don't want to rush.
- Given all we are learning and discussing, we think the group and process would benefit from adding a few more meetings into next spring
- We would like to add a few more members to the group to help ensure we represent as many perspectives as possible and have a robust group.

*Do you have any concerns with any of these changes?*



# Planning upcoming conversations

Future topics that will be discussed with the AG:

- How should we engage other community members as part of this process? How should we invite their input?
  - How can communities beyond Cambridge learn from the NZTP process?
  - How can we learn from other cities that have faced similar challenges?
- 
- ***What other topics would you like to discuss?***



# Public comment

- Public comments are welcome
  - Share thoughts in Zoom Q&A or verbally
  - To comment verbally, **raise your virtual “hand”** (or actual hand if in person)
  - Please limit your comments to **2 minutes** (we may reduce this time if the queue fills up)
- Please keep all comments...
  - **Relevant to the topics discussed today**
  - **Respectful**
  - **Focused on issues (not individuals)**





## Next steps

- ✓ We'll share follow-up materials and a draft meeting summary
- ✓ Next meeting: **Wednesday, September 27 @ 8:45 AM**
- ✓ Others?

# Check out question

- *What is one thing you learned from our conversations today?*





**Thank You**