

City of Cambridge
Community Development Department

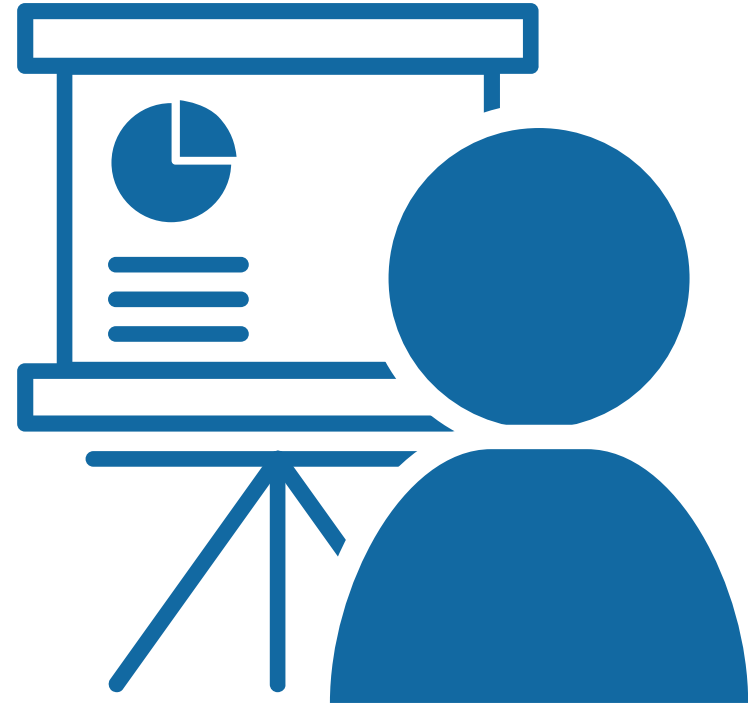
Pedestrian Committee Meeting

December 17, 2020



Meeting Agenda

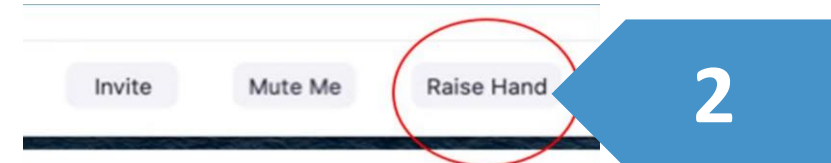
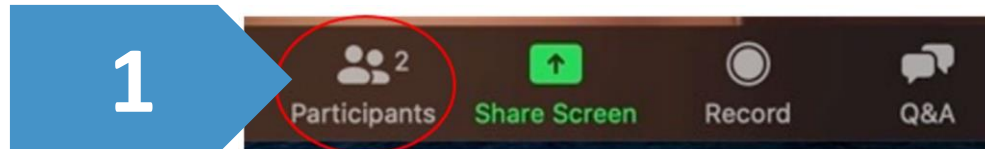
1. Zoom meeting protocols, minutes
2. Grand Junction Path
3. CambridgeSide Development
4. Tobin/Vassal Lane Schools Project
5. MIT Volpe Development
6. Other Project Updates
7. Public Comment
8. Subcommittees
9. Other Announcements



Minute taker: ?

Committee Member Instructions

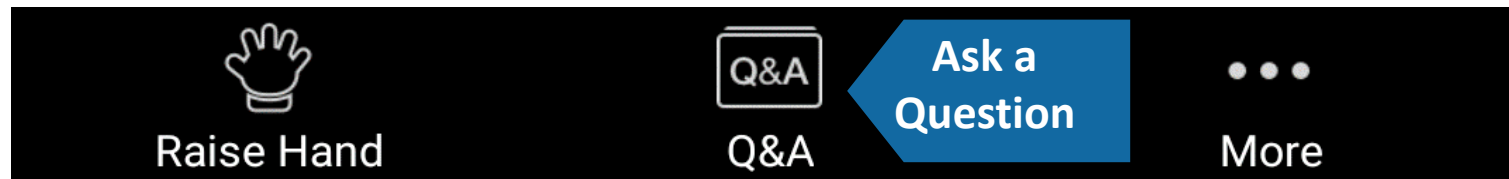
- Committee members may speak and show webcam video
 - Use "Raise Hand" button to help manage discussion
 - *9 to Raise Hand by phone
- Please stay muted unless speaking
 - *6 to mute/unmute by phone



Public Comment Instructions

- Members of the public are muted and cannot show webcam video
- Public can write questions or ask for assistance in Q&A window at any time
 - Questions may be submitted at any time and will be addressed as time allows, during discussion/comment periods
- During the Public Comment period, use the "Raise Hand" button to signal you have a question/comment. A staff member will then enable you to unmute yourself.
 - *9 to Raise Hand by phone
 - *6 to Mute/Unmute by phone
- Please be respectful! Participants will be removed for inappropriate behavior

Bottom Panel of
Zoom Screen





Minutes



Grand Junction Path

Bill Deignan, *Community Development Dept*

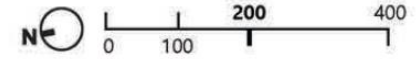


CambridgeSide Development

Connectivity Plan Pedestrian Circulation Plan

PUD-8 Special Permit
CambridgeSide
Cambridge, MA

VOLUME II
EXHIBIT CP.1

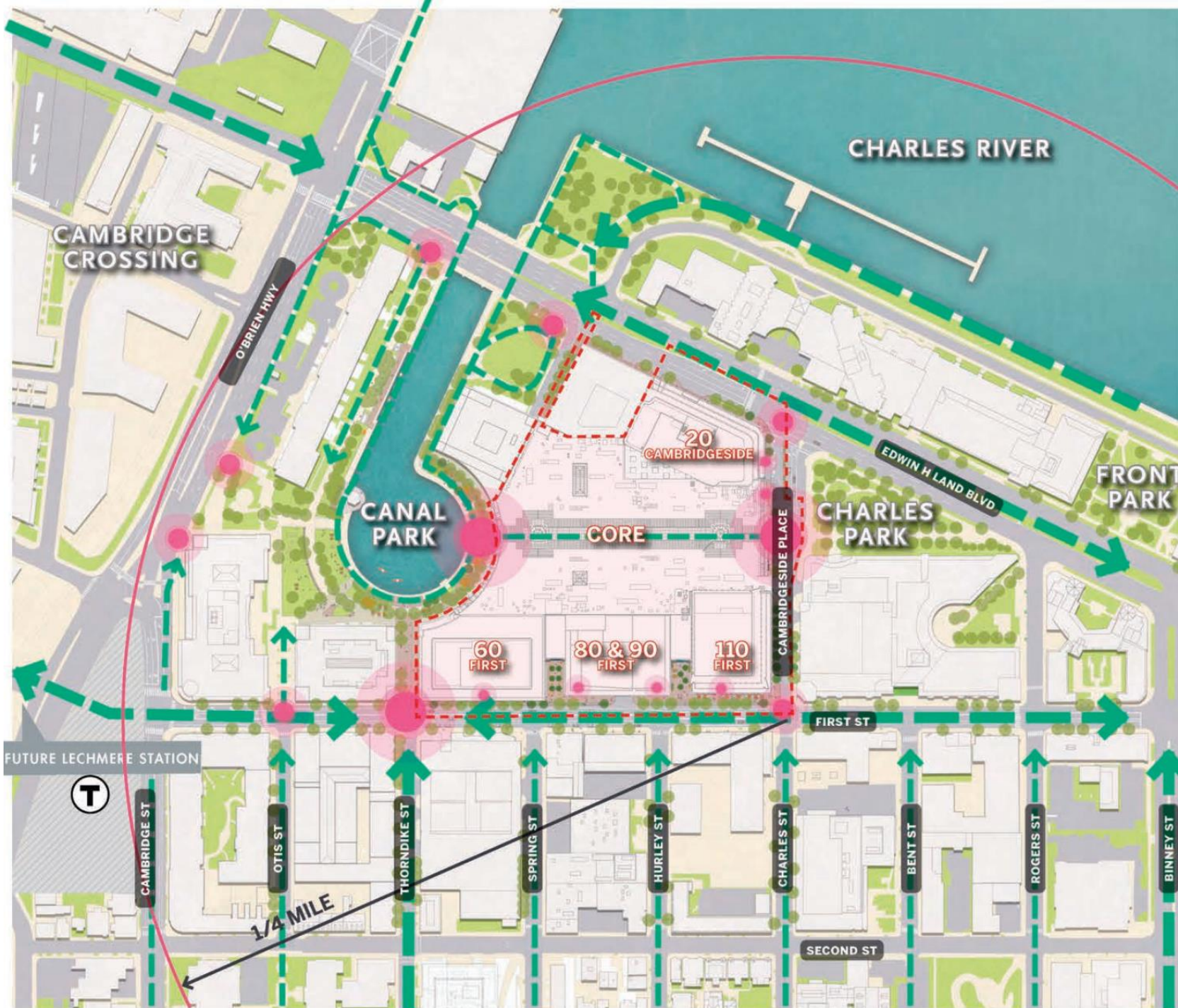


Legend

PUD-8 DEVELOPMENT PARCEL

ENTRY POINTS

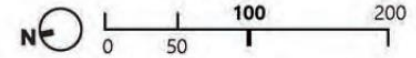
PEDESTRIAN CIRCULATION



Connectivity Plan Pedestrian Access Plan

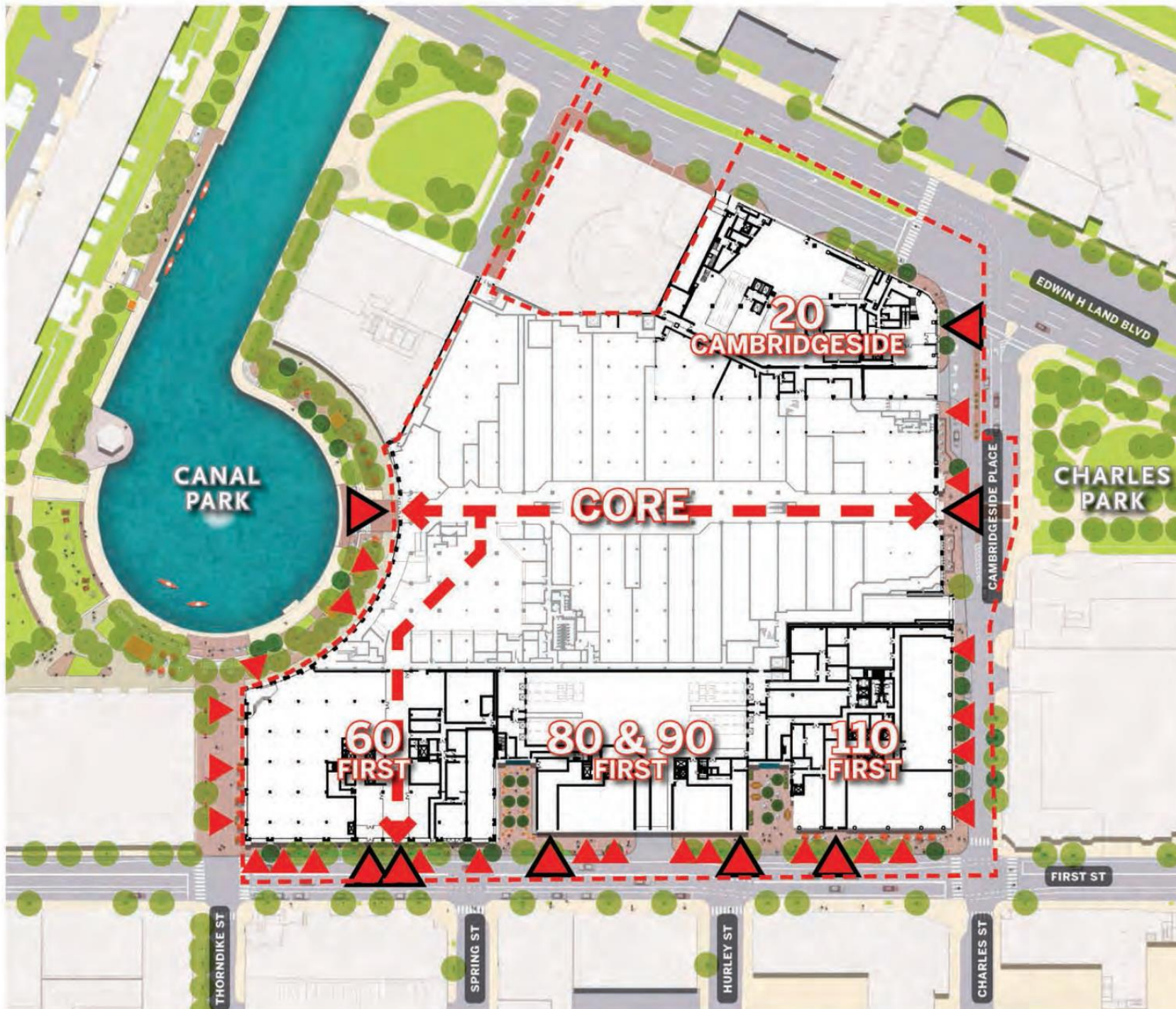
PUD-8 Special Permit
CambridgeSide
Cambridge, MA

VOLUME II
EXHIBIT CP.2



Legend

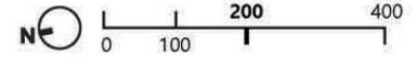
- PUD-8 DEVELOPMENT PARCEL
- PEDESTRIAN ENTRY
- PEDESTRIAN PATH



Site Development Plan Open Space Overview

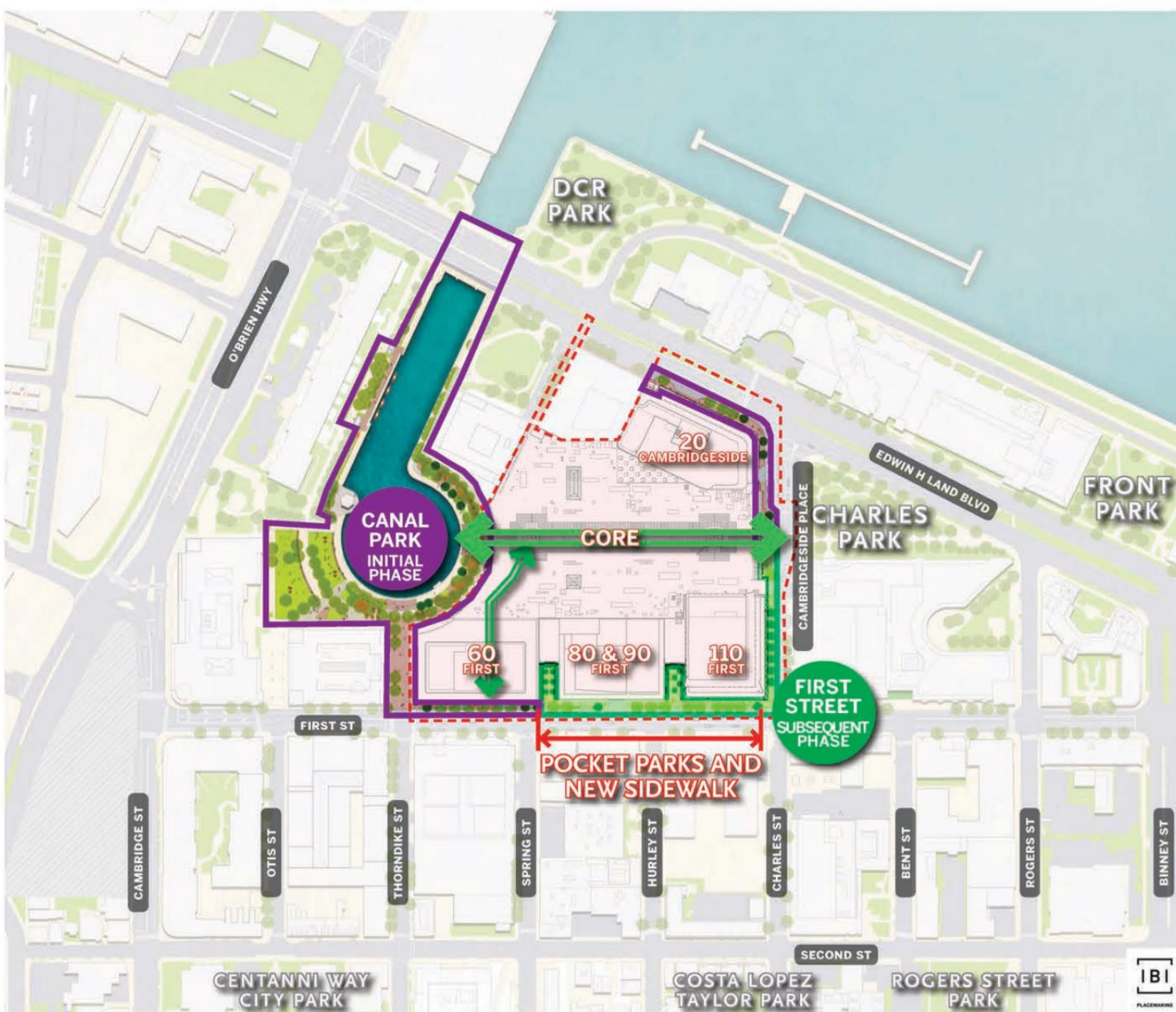
PUD-8 Special Permit
CambridgeSide
Cambridge, MA

VOLUME II
EXHIBIT SDP.14



Legend

- PUD-8 DEVELOPMENT PARCEL
- STREETScape AND CANAL PARK
- NEW SIDEWALK AND POCKET PARKS

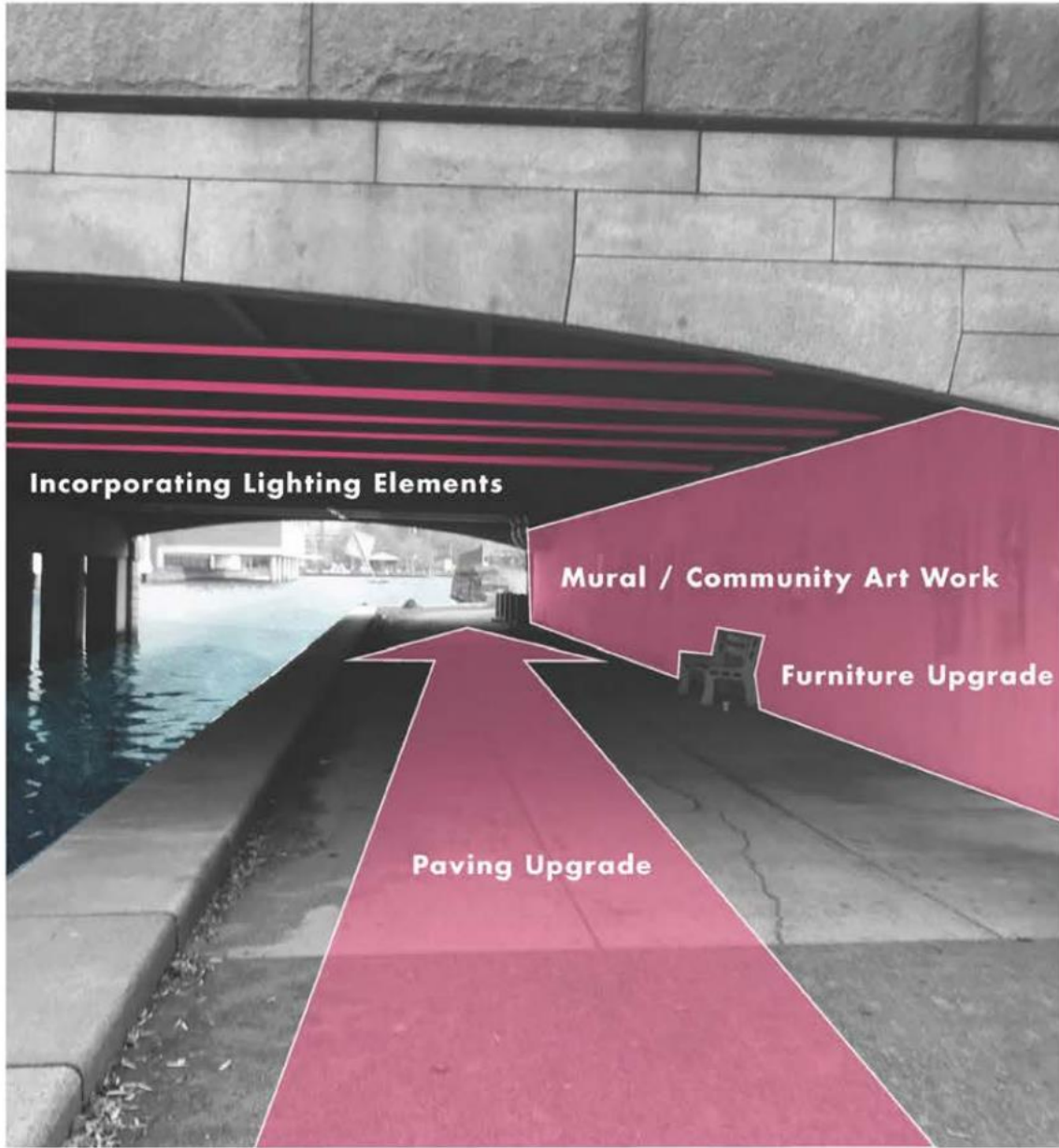


NEW ENGLAND
DEVELOPMENT

ELKUS

MANFREDI
ARCHITECTS



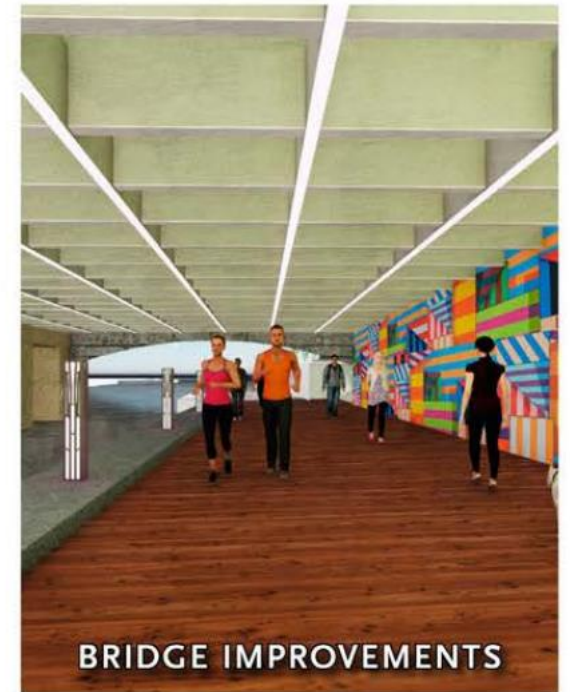


Open Space Plan Landscape Plan

OPPORTUNITIES DIAGRAM : BRIDGE

PUD-8 Special Permit
CambridgeSide
Cambridge, MA

SUPPLEMENT
EXHIBIT 9

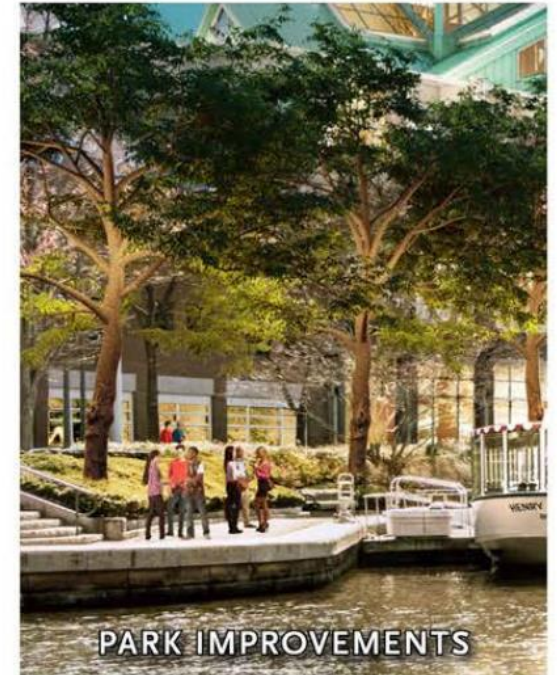
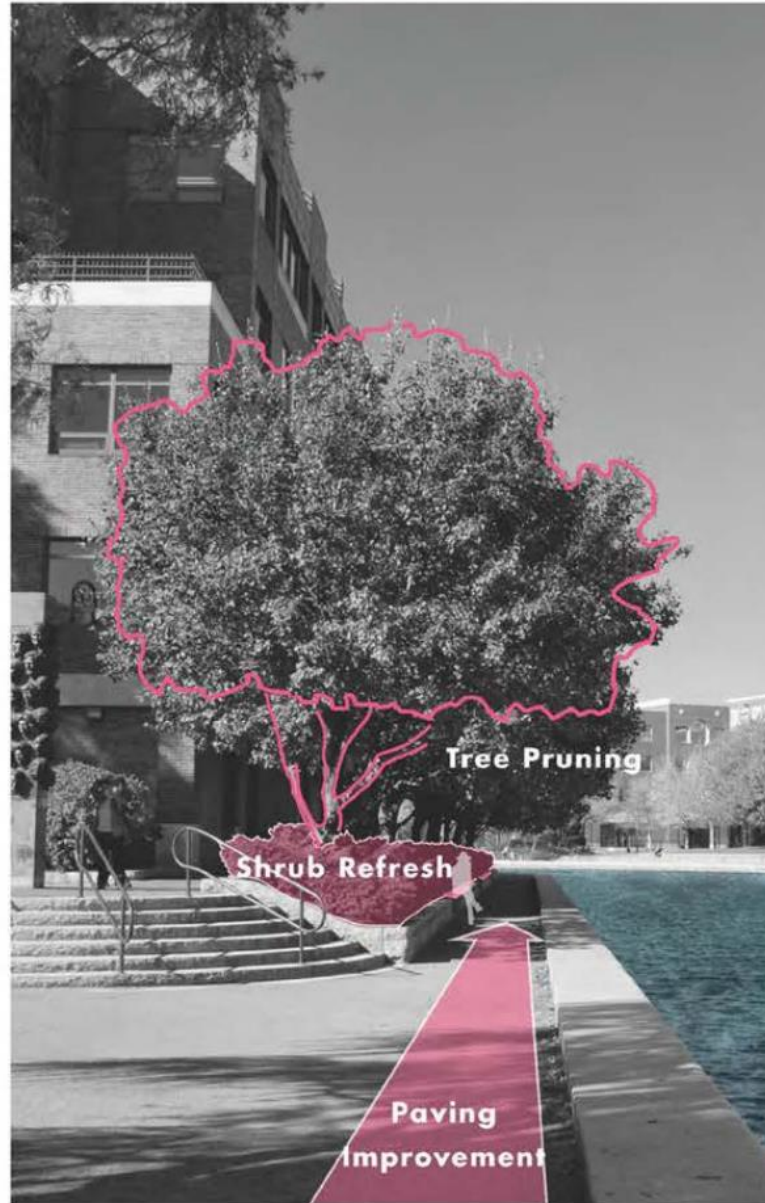


Open Space Plan Landscape Plan

OPPORTUNITIES DIAGRAM : LANDSCAPE

PUD-8 Special Permit
CambridgeSide
Cambridge, MA

SUPPLEMENT
EXHIBIT 10



NEW ENGLAND
DEVELOPMENT

ELKUS

MANFREDI
ARCHITECTS



Open Space Plan Landscape Plan

OPPORTUNITIES DIAGRAM : HARDSCAPE

PUD-8 Special Permit
CambridgeSide
Cambridge, MA

SUPPLEMENT
EXHIBIT 11



NEW ENGLAND
DEVELOPMENT

ELKUS

MANFREDI
ARCHITECTS





SCULPTURE



2+3

WATER SPORTS



SEATING



SEATING

Open Space Plan Conceptual Illustrations Lower Canal

INITIAL PHASE
PUD-8 Special Permit
CambridgeSide
Cambridge, MA

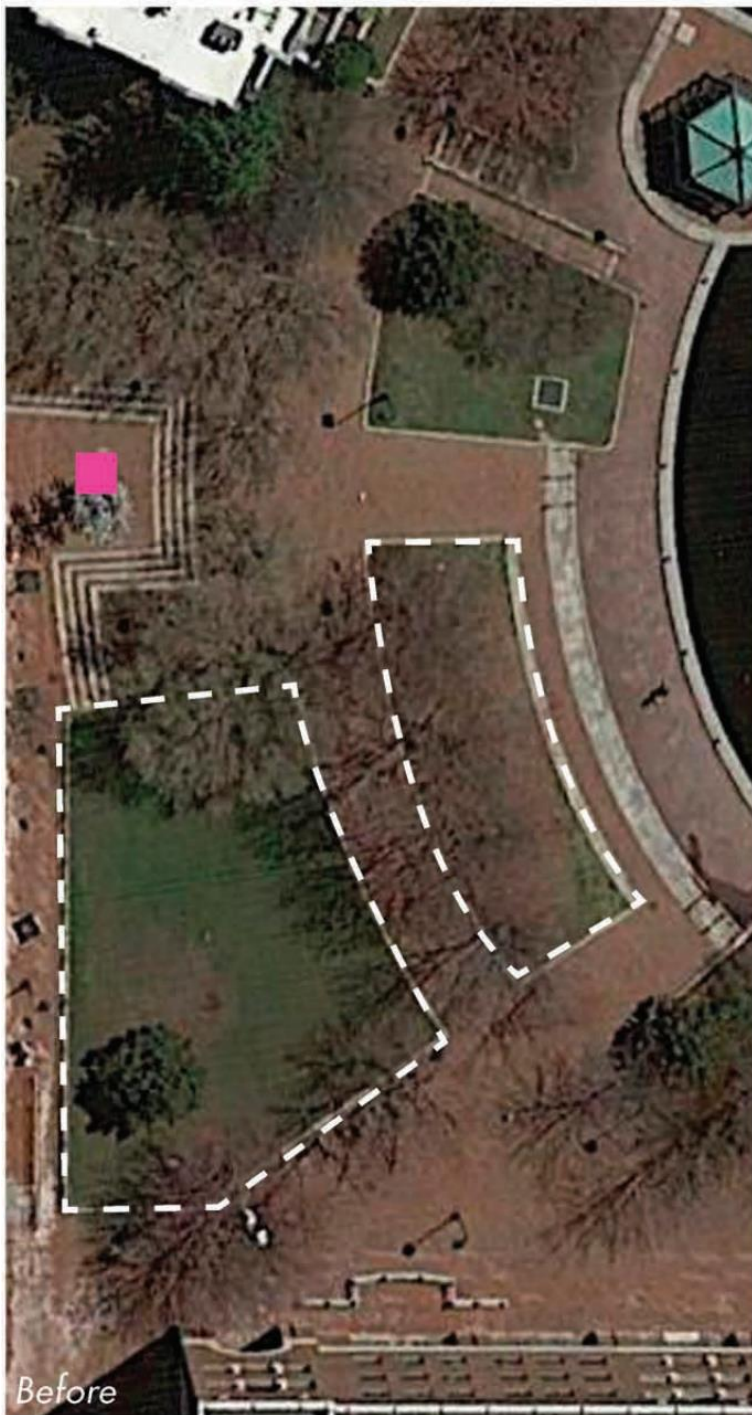
VOLUME II
EXHIBIT OSP.5



THOMAS GRAVES LANDING

CANAL PARK





Before



After

Approx. 750 People Capacity



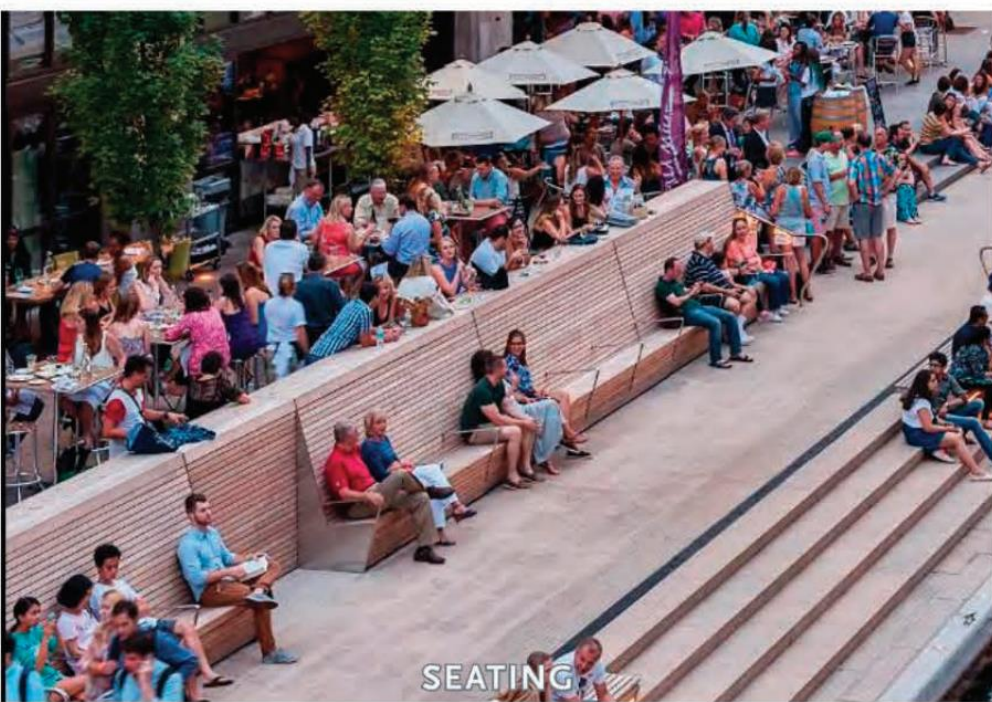
4

Open Space Plan Conceptual Illustrations Great Lawn

INITIAL PHASE
PUD-8 Special Permit
CambridgeSide
Cambridge, MA

VOLUME II
EXHIBIT OSP.6





SEATING



POP-UP CAFE



OVERHEAD LIGHTING

5

Open Space Plan Conceptual Illustrations Upper Canal

INITIAL PHASE
PUD-8 Special Permit
CambridgeSide
Cambridge, MA

VOLUME II
EXHIBIT OSP.7





LOCAL ART



OUTDOOR SEATING



LIGHTING



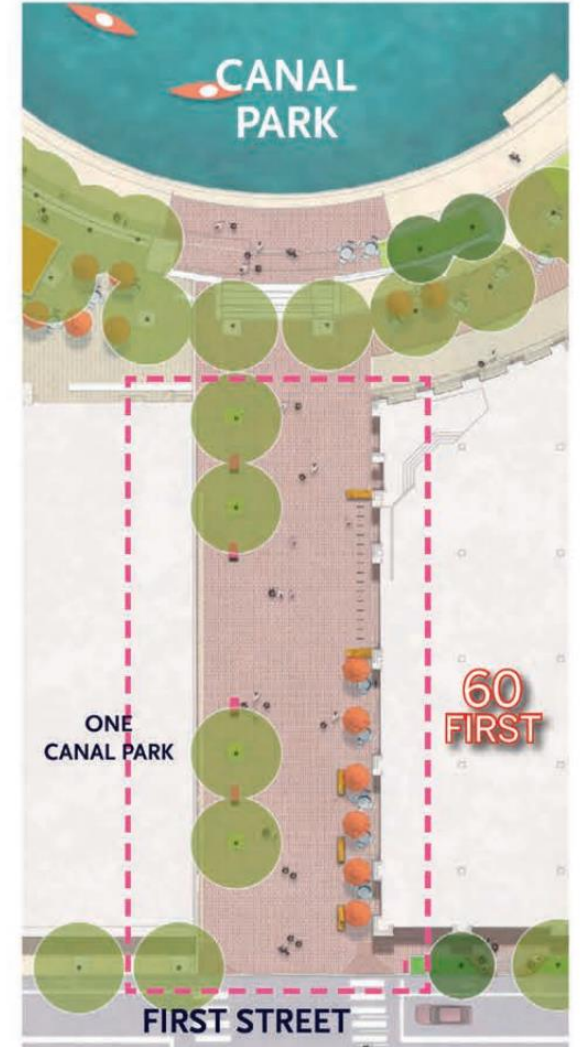
THORNDIKE WAY

6

Open Space Plan Conceptual Illustrations Thorndike Way

INITIAL PHASE
PUD-8 Special Permit
CambridgeSide
Cambridge, MA

VOLUME II
EXHIBIT OSP.8





POCKET PARKS



WORK



REST



GATHER



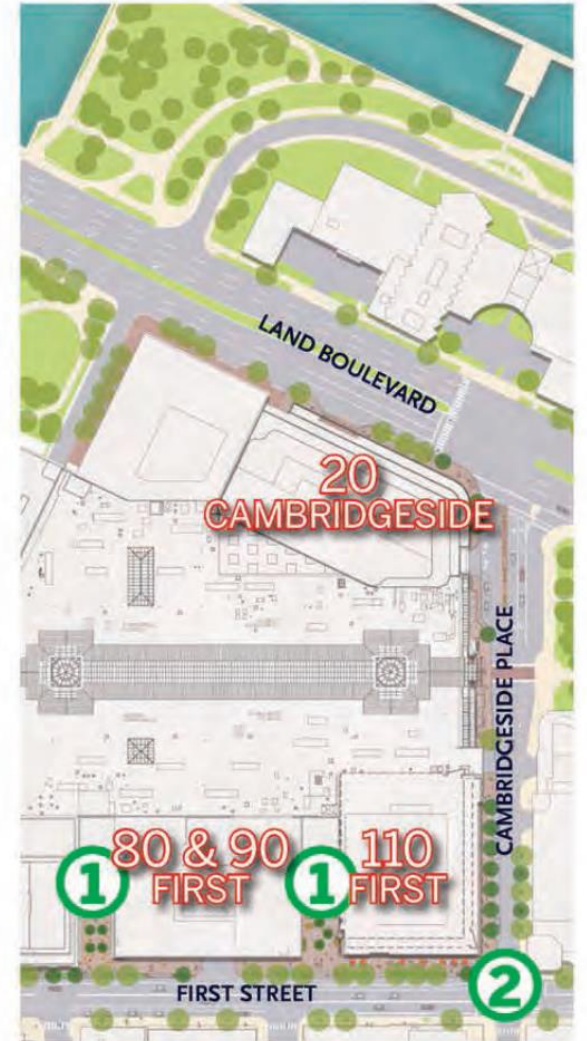
STREETSCAPE

2

Open Space Plan
Conceptual Illustrations
First Street

INITIAL PHASE
PUD-8 Special Permit
CambridgeSide
Cambridge, MA

VOLUME II
EXHIBIT OSP.10



IBI
PLANNING

NEW ENGLAND
DEVELOPMENT

ELKUS

MANFREDI
ARCHITECTS

CS
CAMBRIDGE



ACTIVE STOREFRONTS AND POCKET PARKS

Ground Floor & Activation Plan Streetscape View

80 & 90 FIRST STREET

PUD-8 Special Permit
CambridgeSide
Cambridge, MA

VOLUME II
EXHIBIT AP.7



CAMBRIDGESIDE

**80 & 90
FIRST**

FIRST STREET



EXISTING FIRST STREET



**NEW ENGLAND
DEVELOPMENT**

ELKUS

**MANFREDI
ARCHITECTS**





ARTFUL



SOCIAL



PLAYFUL



MOVE



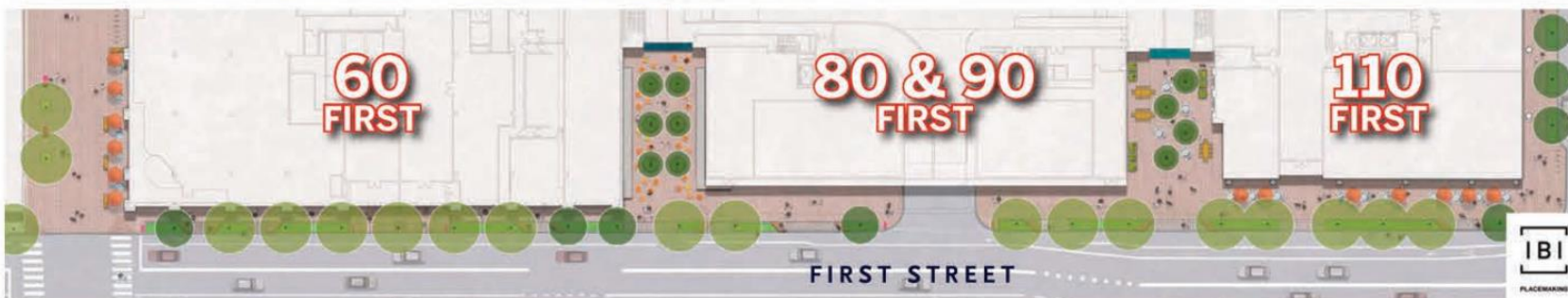
READ



PAUSE



SHOP



**60
FIRST**

**80 & 90
FIRST**

**110
FIRST**

FIRST STREET



**Open Space Plan
Conceptual Illustrations**

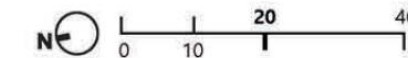
First Street

POCKET PARKS SUBSEQUENT PHASE

PUD-8 Special Permit
CambridgeSide
Cambridge, MA

VOLUME II

EXHIBIT OSP.11



**60
FIRST**

**80 & 90
FIRST**

FIRST STREET



A NEW ENTRY ON FIRST STREET



EXISTING FIRST STREET

**Ground Floor & Activation Plan
Streetscape View**

60 FIRST STREET

PUD-8 Special Permit
CambridgeSide
Cambridge, MA

VOLUME II
EXHIBIT AP.5





RECOGNIZABLE, ACTIVE AND TRANSPARENT BASE

Ground Floor & Activation Plan Streetscape View

110 FIRST STREET

PUD-8 Special Permit
CambridgeSide
Cambridge, MA

VOLUME II
EXHIBIT AP.9



EXISTING FIRST STREET

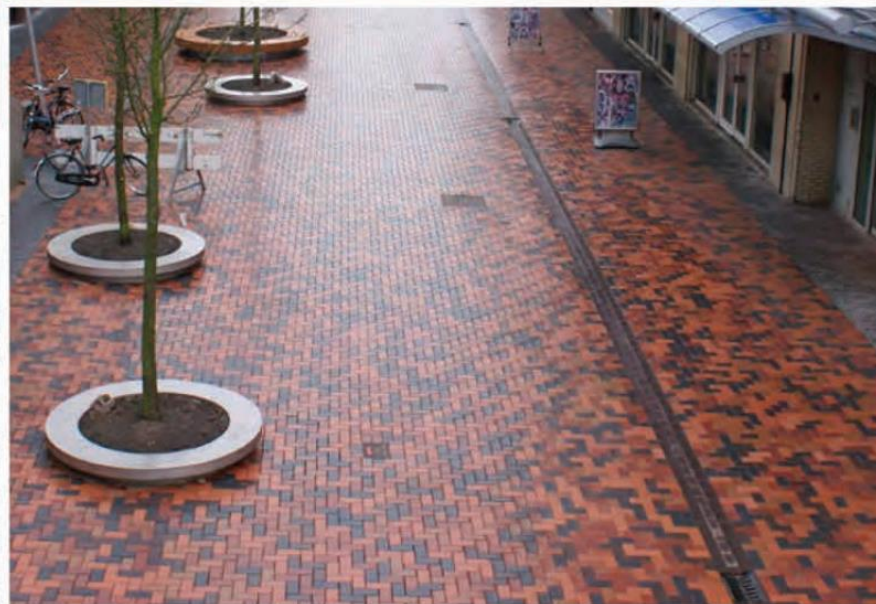


NEW ENGLAND
DEVELOPMENT

ELKUS

MANFREDI
ARCHITECTS





Open Space Plan Conceptual Illustrations Site Paving

PUD-8 Special Permit
CambridgeSide
Cambridge, MA

VOLUME II
EXHIBIT OSP.12



Open Space Plan Conceptual Illustrations Site Furnishings

PUD-8 Special Permit
CambridgeSide
Cambridge, MA

VOLUME II
EXHIBIT OSP.13





Open Space Plan Conceptual Illustrations Site Lighting

PUD-8 Special Permit
CambridgeSide
Cambridge, MA

VOLUME II
EXHIBIT OSP.14



NEW ENGLAND
DEVELOPMENT

ELKUS

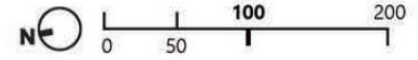
MANFREDI
ARCHITECTS



Open Space Plan Conceptual Illustrations Art and Activity Plan

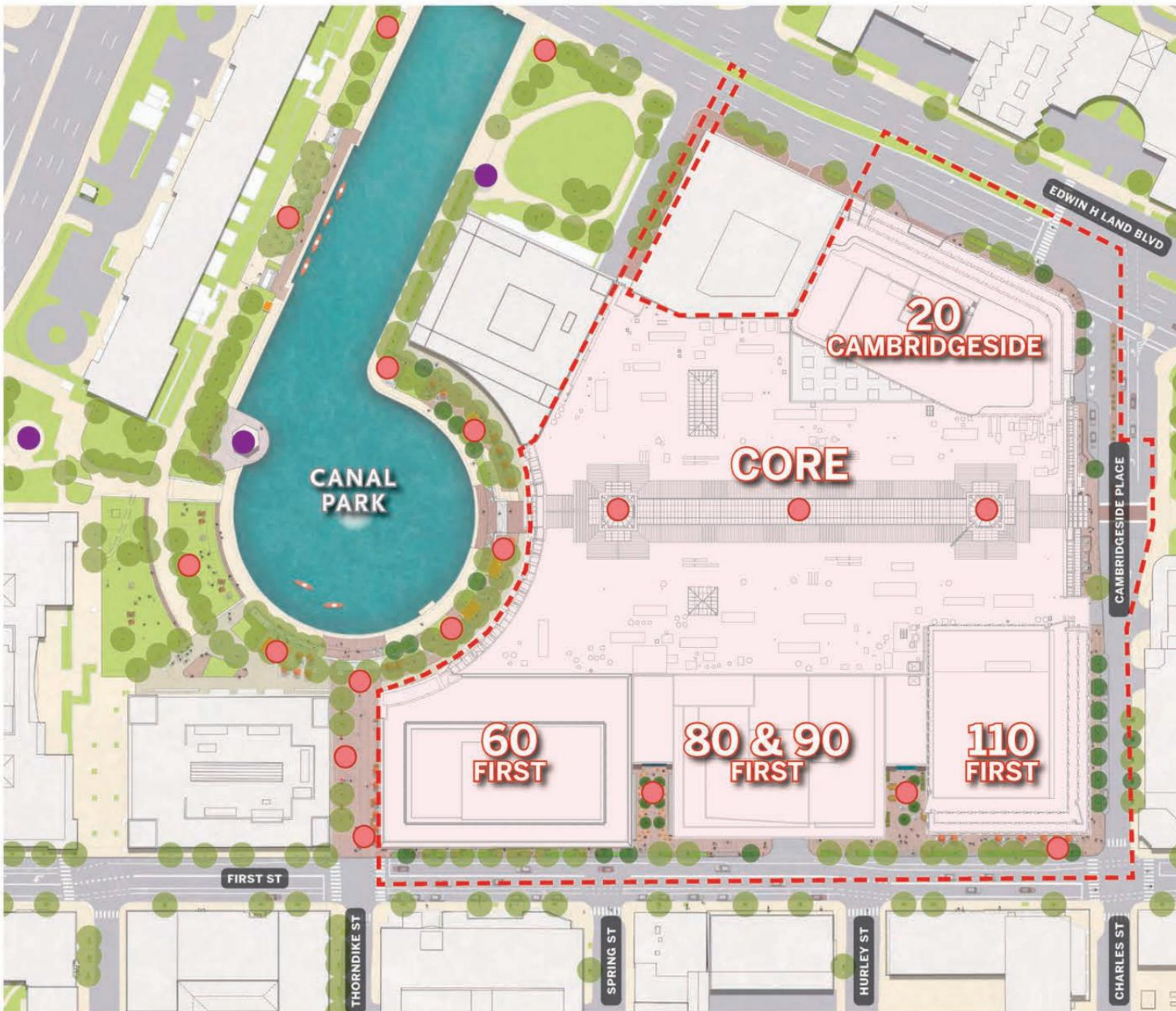
PUD-8 Special Permit
CambridgeSide
Cambridge, MA

VOLUME II
EXHIBIT OSP.15



Legend

- PUD-8 DEVELOPMENT PARCEL
- ART / ACTIVITY LOCATION
- EXISTING ART

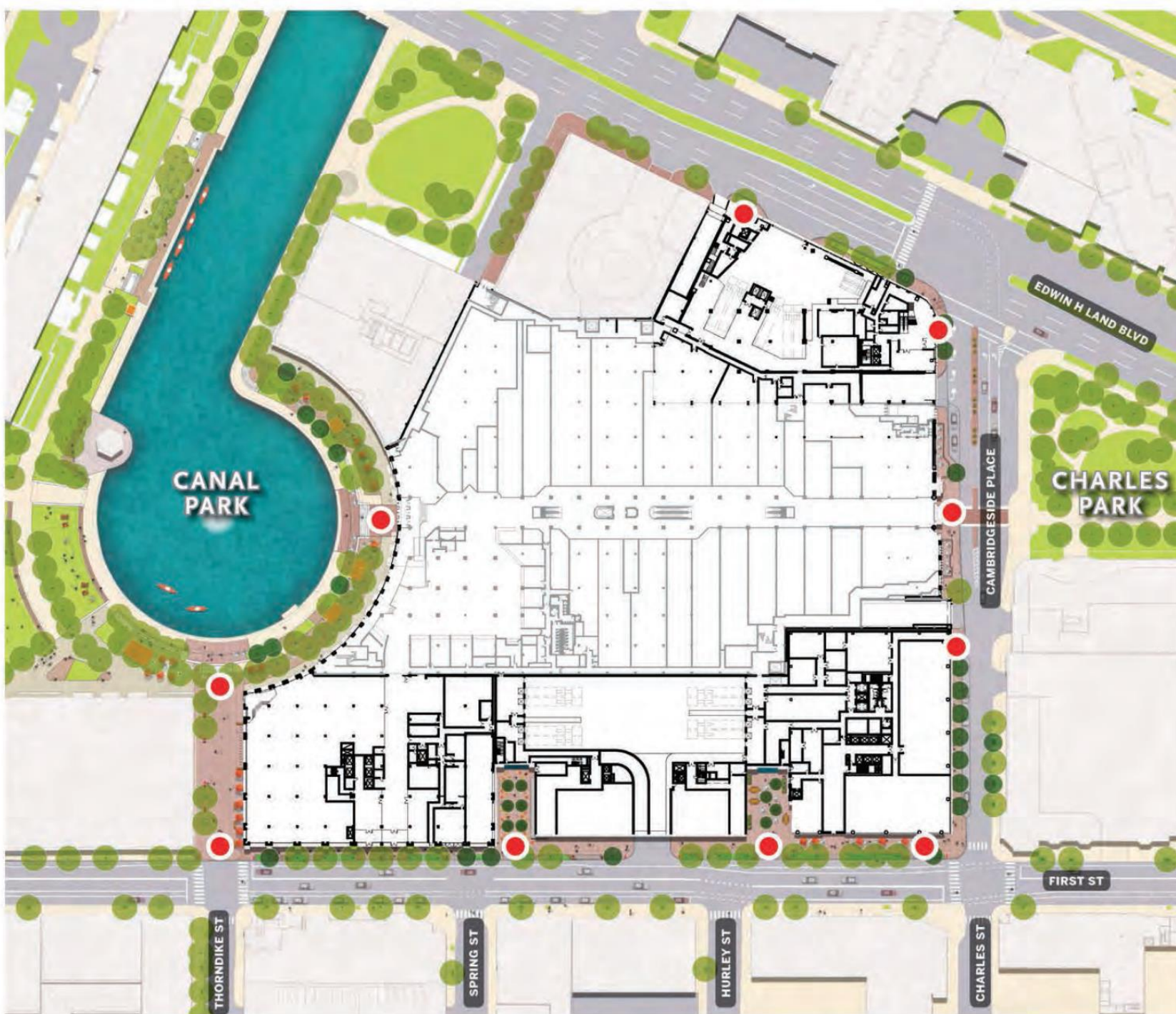


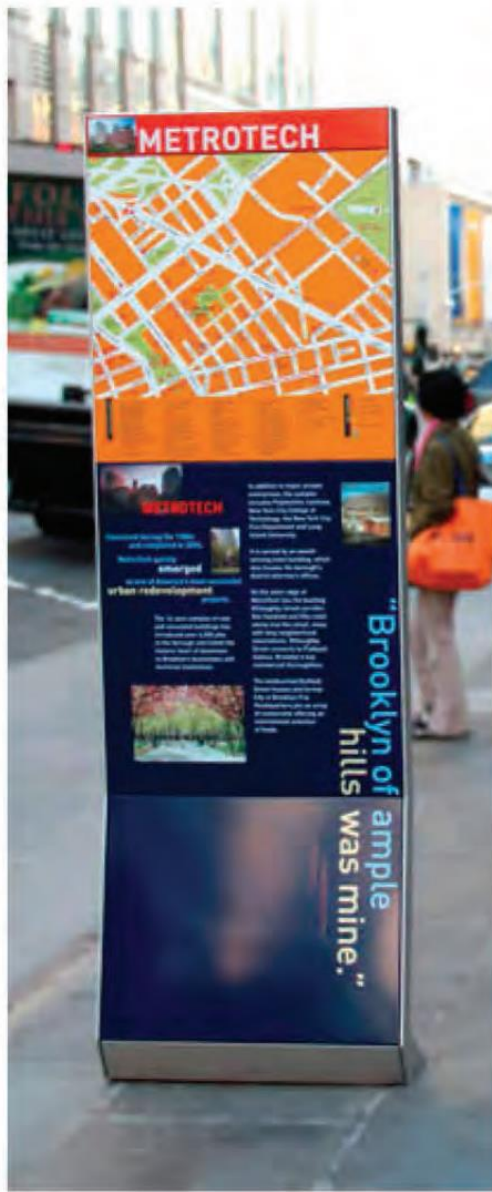
Comprehensive Signage Plan Conceptual Wayfinding Signage Plan

PUD-8 Special Permit
CambridgeSide
Cambridge, MA

VOLUME II
EXHIBIT CSP.5

● CONCEPTUAL LOCATION
OF WAYFINDING SIGNAGE





Comprehensive Signage Plan
**Examples of
 Conceptual Signage**
 PUD-8 Special Permit
 CambridgeSide
 Cambridge, MA
VOLUME II
EXHIBIT CSP.6

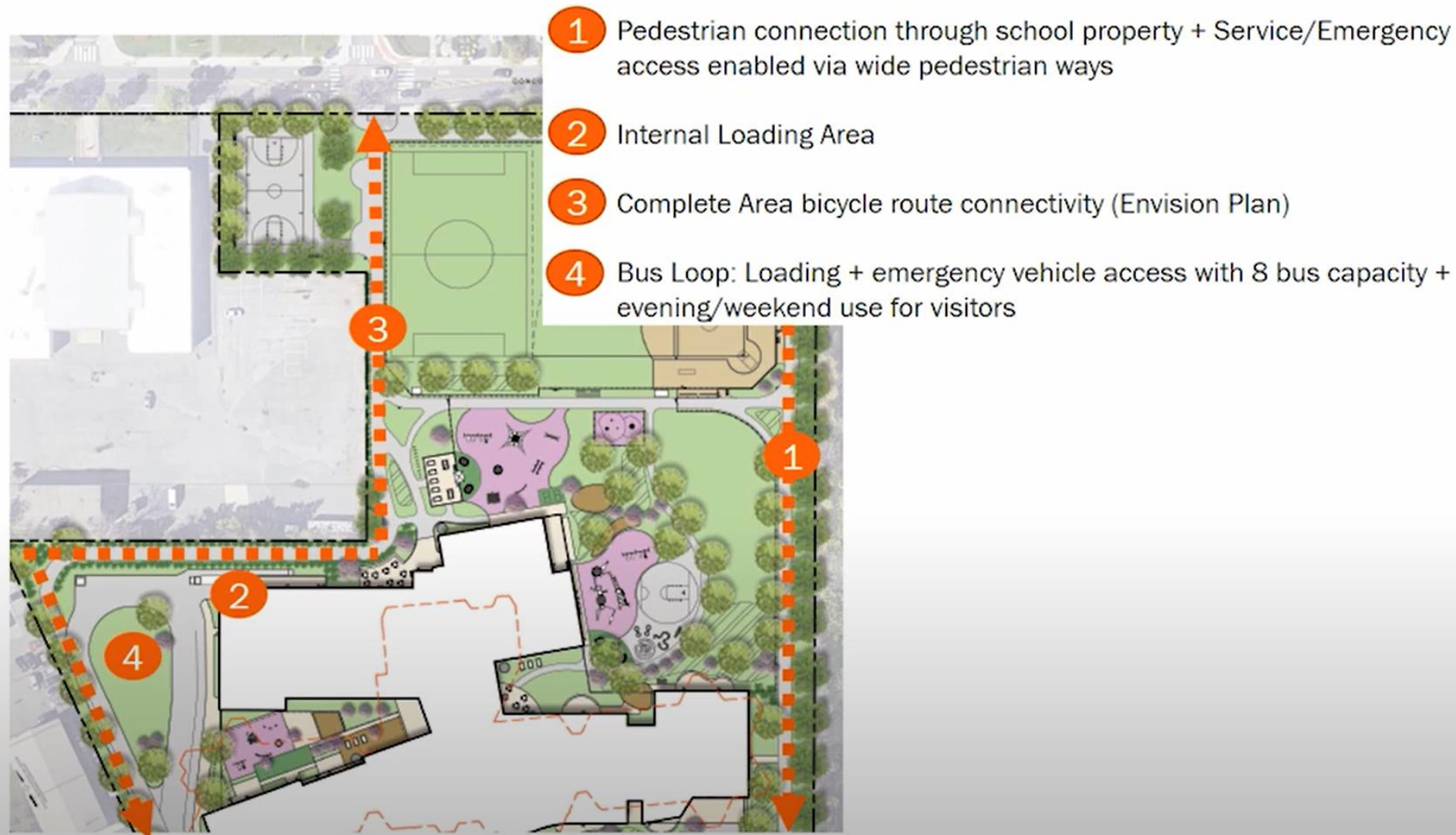
**Free Standing
 SITE, WAYFINDING,
 AND DIRECTORY**



Tobin and Vassal Lane Schools

MITIGATION + IMPROVEMENT ACTIONS

SITE PLANNING



AREA IMPROVEMENTS

STUDENT DROP OFF AND PICK UP

- 1 Bike and bike share parking
- 2 Below grade parking
- 3 Parent drop-off/pick-up separated from busses
- 4 Eliminate on-street drop-off

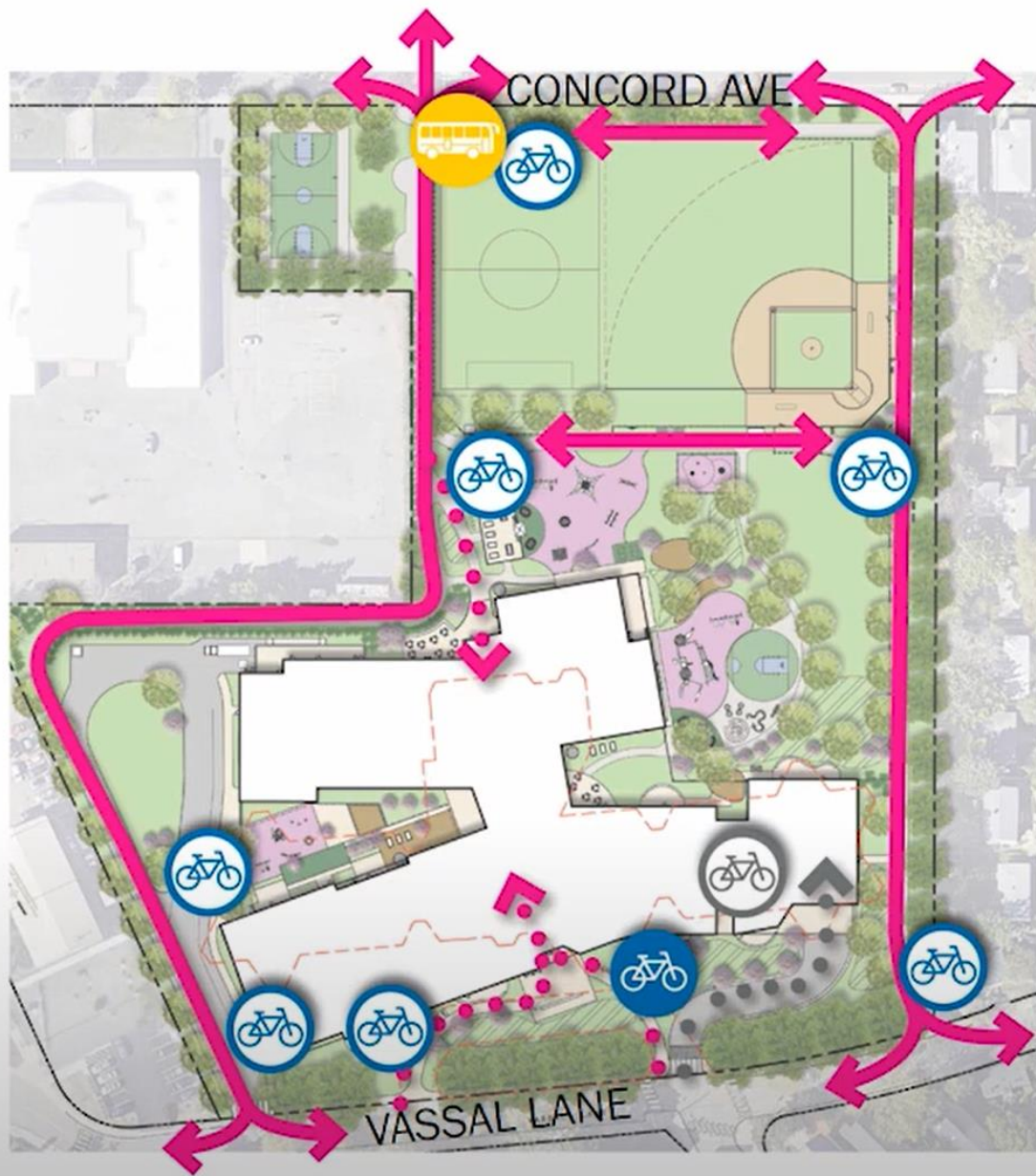


AREA IMPROVEMENTS



VASSAL LANE IMPROVEMENTS

- 1 School zone flashers
- 2 Sidewalk and pedestrian improvements
- 3 Traffic calming measures
- 4 Safety measures at Standish intersection

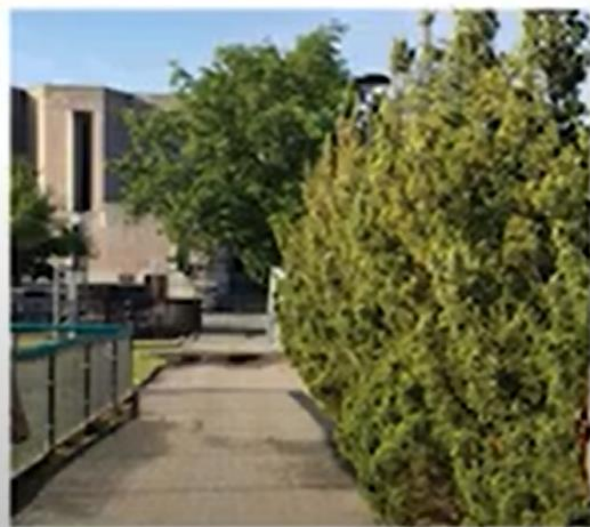




LEGEND

-  MAIN ROUTE TO BUILDING
-  MULTI-USE PATHS
-  BIKE ACCESS TO UNDERGROUND
-  BIKE RACKS
-  BLUE BIKE DOCKING
-  UNDERGROUND BIKE STORAGE
-  BUS STOP





1

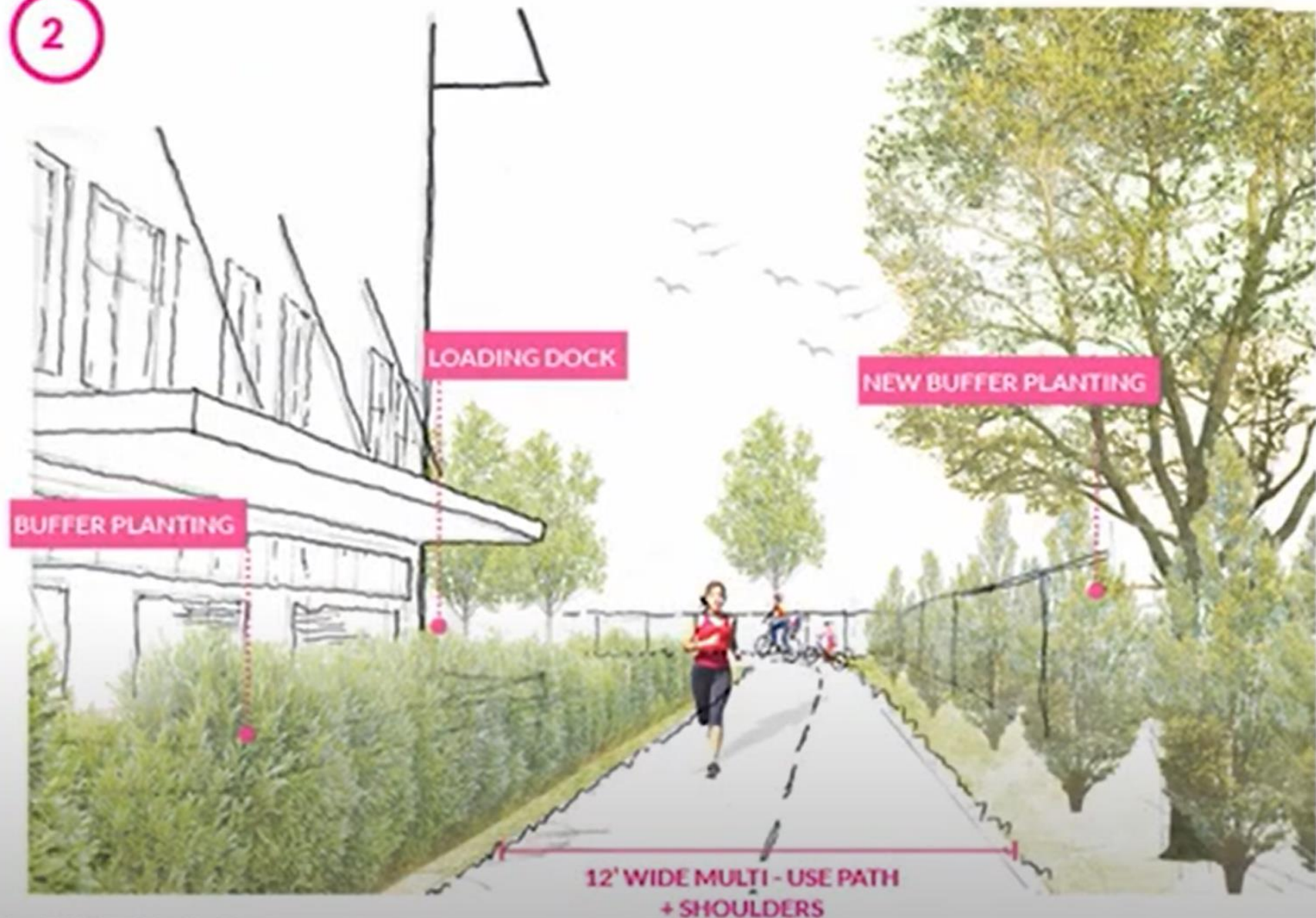


PROPOSED VIEW

TRAVERSE



2



PROPOSED VIEW

TRAVERSE



3

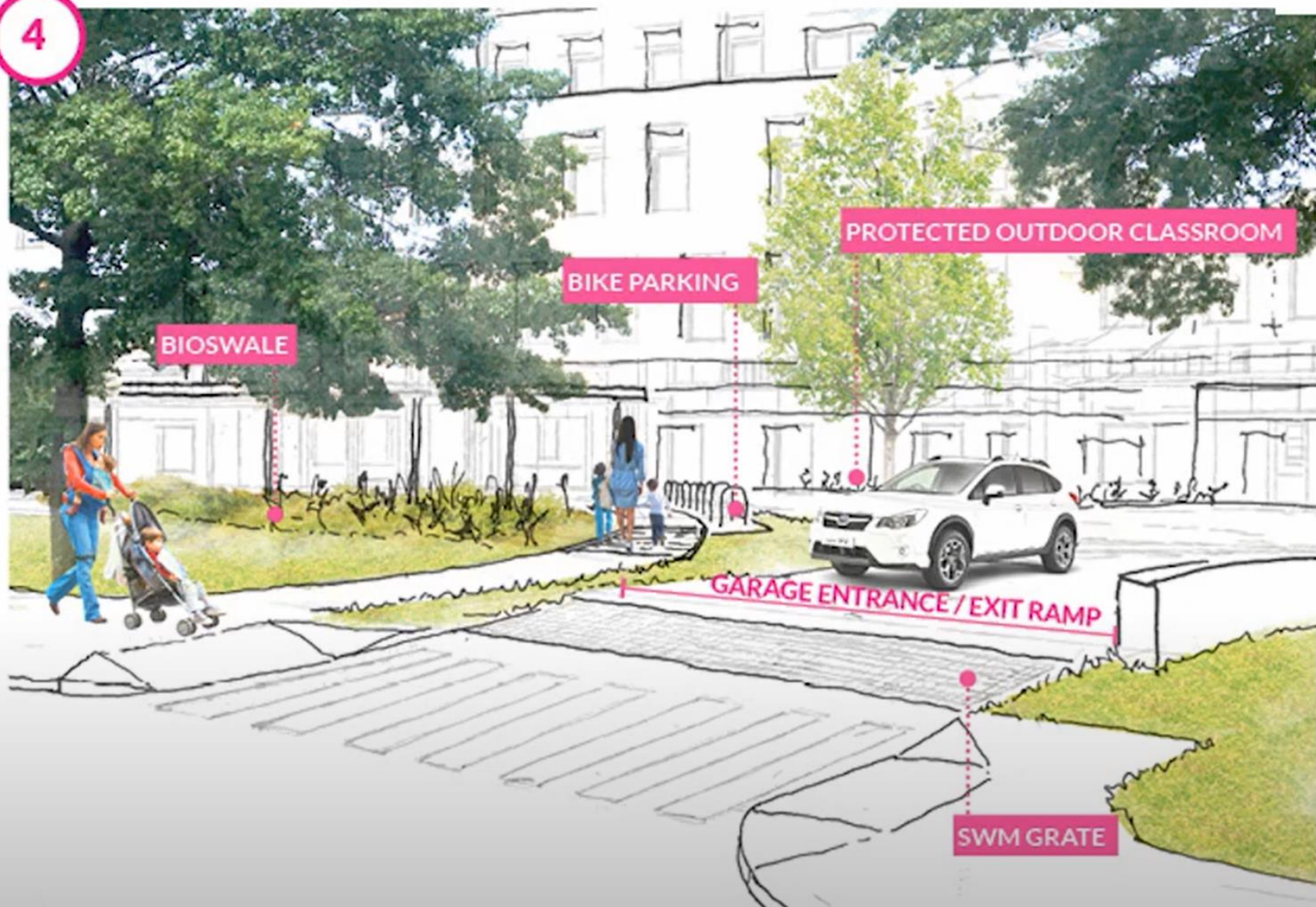


PROPOSED VIEW

TRAVERSE



4



PROPOSED VIEW

TRAVERSE



5



PROPOSED VIEW

TRAVERSE



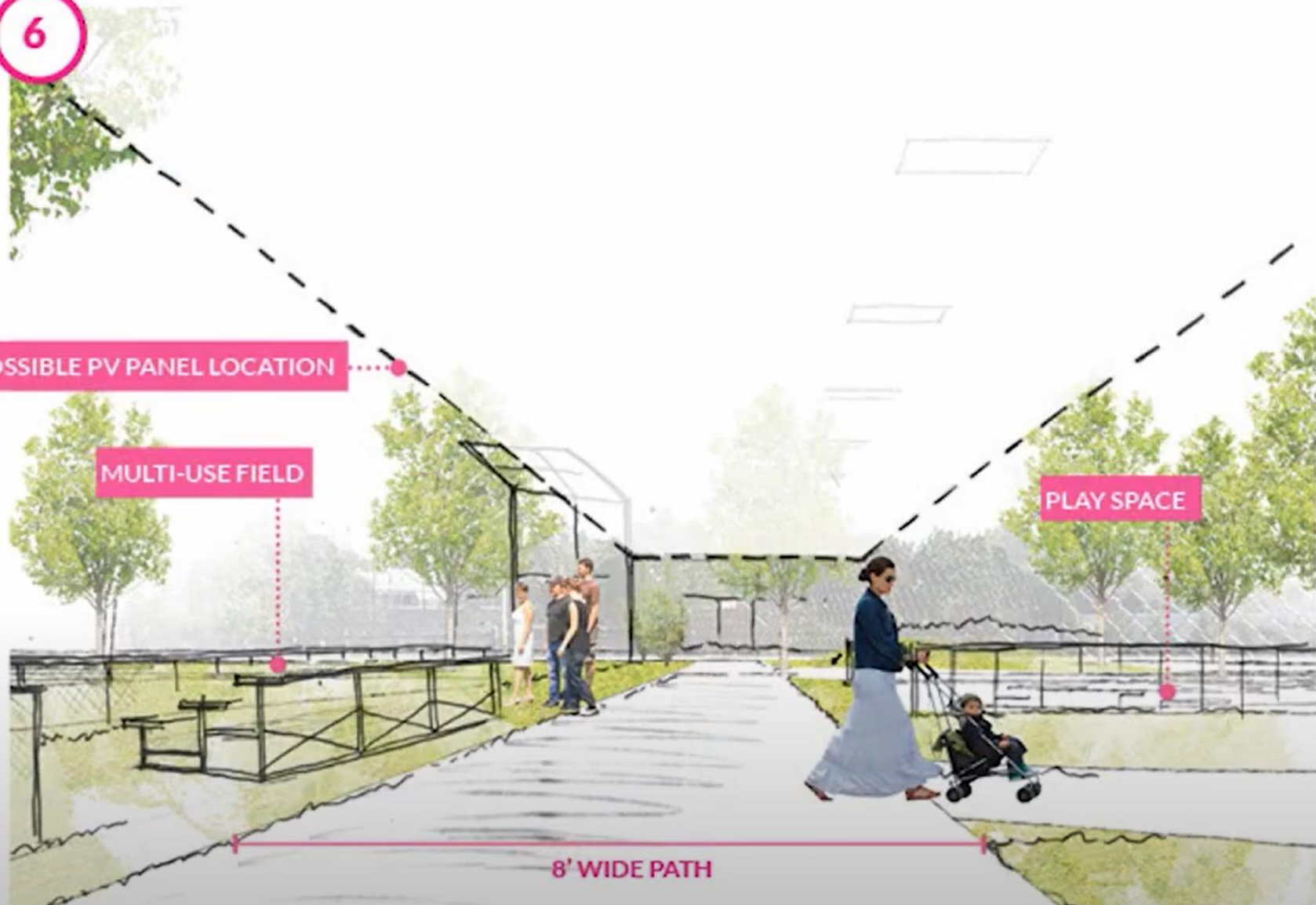
6

POSSIBLE PV PANEL LOCATION

MULTI-USE FIELD

PLAY SPACE

8' WIDE PATH



PROPOSED VIEW

TRAVERSE



7

CONCORD AVE
STREET AND
SIDEWALK

VEGETATIVE BUFFER

MULTI-USE FIELD

10' WIDE PATH



PROPOSED VIEW

TRAVERSE



MIT Volpe Development

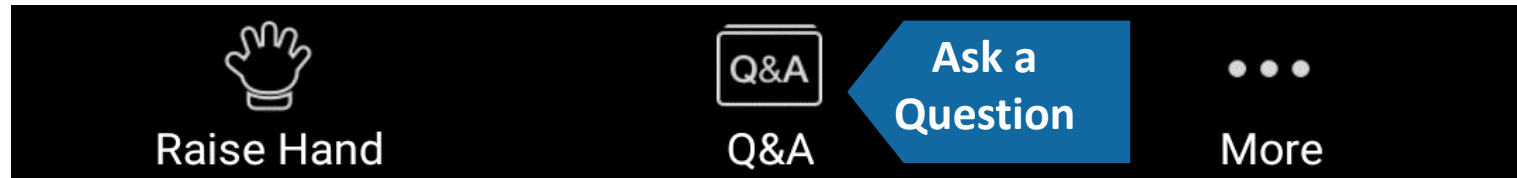


Public comment

Public Comment Instructions

- Use the "Raise Hand" button to signal you have a question/comment. A staff member will then enable you to unmute yourself.
 - *9 to Raise Hand by phone
- Questions can also be submitted using the Q&A button.

Bottom Panel of
Zoom Screen





Subcommittee Work



Other Announcements



Thank You