



2023 Municipal Election Voter Guide

IN THE CITY OF CAMBRIDGE



Election Day is Tuesday, November 7, 2023!

The deadline to register to vote is **Saturday, October 28, 2023!** The Election Commission Office at 51 Inman St will be open from 9 a.m. to 5 p.m.

Voter Registration

Check your Voter Registration Status at [RegisterToVoteMA.com](https://www.RegisterToVoteMA.com) or call 617-349-4361

Online: Register at www.registertovotema.com if you have a Massachusetts Driver's License or ID. If you don't, you can still use the website but you must print your form, sign it, and mail it to the Election Commission office.

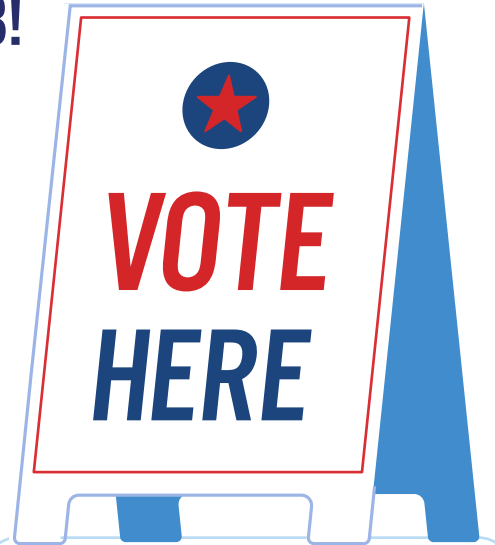
By Mail: You can obtain a mail-in registration form from the City Clerk's office, any Cambridge Post Office or any branch of the Cambridge Public Library. Mail completed registration forms to: *Cambridge Election Commission, 51 Inman Street, Cambridge, MA 02139*

In Person: If you would like to register in-person, you may do so at the Election Commission office at *51 Inman Street*. Voter registration is also available as part of every transaction at the Registry of Motor Vehicles and at certain public assistance agencies.

Eligibility: To register to vote in the City of Cambridge, You must:

- Be a citizen of the United States
- Be a resident of Cambridge
- Be 18 years of age or older (Cambridge citizens who are 16 or 17 years of age can pre-register.)

Already registered to vote? You only need to re-register when you change your name, residential address, mailing address, or political party



Ways to Vote!

Vote By Mail:

All Cambridge voters can vote by mail for this election. See page 3 for more details.

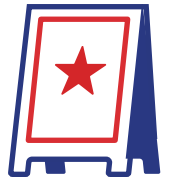
Vote Early In-Person:

Early voting will be available at three locations from October 28th through November 3rd at any of the three locations during designated hours (see page 2).

Vote On Election Day:

Polls are open from 7 a.m. until 8 p.m. on Tuesday, November 7th. Voters must vote at their designated polling location (see page 4).

EARLY VOTING IN PERSON



Any registered voter can vote early. Unlike Election Day, you are not assigned to a polling location during the early voting period. You can go to any of the three Cambridge early voting locations during the times designated below.

The Election Commission office at 51 Inman Street will NOT be an early voting location for the Municipal Election.

In Person Early Voting Times and Locations

SAT	SUN	MON	TUES	WED	THUR	FRI
OCT 28	OCT 29	OCT 30	OCT 31	NOV 1	NOV 2	NOV 3
9 A.M. - 3 P.M.	9 A.M. - 3 P.M.	8:30 A.M. - 8 P.M.	8:30 A.M. - 5 P.M.	8:30 A.M. - 5 P.M.	8:30 A.M. - 5 P.M.	8:30 A.M. - 12 P.M.

Valente Library – 826 Cambridge Street, Side Entrance on Berkshire Street

Cambridge Water Department – 250 Fresh Pond Parkway

Main Library – 449 Broadway

VOTING ON ELECTION DAY



What if I want to vote on Election Day instead?

You can only vote once—if you cast an early voting ballot, either by mail or in-person, you cannot vote on Election Day.

If you don't vote early, you can still vote at your assigned polling location on Election Day. Polls will be open from 7 a.m. until 8 p.m. on Tuesday, November 7th. You will receive a voter notification card with your assigned polling location prior to Election Day.

You must vote at the precinct where you are registered to vote. Look up your polling location at www.sec.state.ma.us/VoterRegistrationSearch, or call the Election Commission office at 617-349-4361. **Please be advised that some polling sites may have been relocated.** A list of polling locations is provided on page 4.



EARLY VOTING BY MAIL

Important Deadlines

Ballots will be mailed beginning the second week of October.

The Election Commission recommends submitting your application **no later than Tuesday, October 17th** to ensure the timely delivery of your ballots. Ballots cannot be mailed to you if your application reaches the Election Commission after **5 p.m. on Tuesday, October 31st**.

Ballots must be received by the Election Commission Office by **8 p.m. on Tuesday, November 7th** to be counted.

Postcard applications are being mailed to Cambridge voters who were registered by August 2nd. If you did not receive a postcard, you can still apply to vote by mail. Ballots will only be mailed to voters who apply in writing.



1. Get an Application

Download an application from www.cambridgema.gov/earlyvoting or send a written request for a ballot with your name, Cambridge address, address where you want the ballot sent, and your signature.

2. Send Application

Send your signed application by email, fax, or mail.

Email: elections@cambridgema.gov

Fax: 617-349-4366

Mail: Cambridge Election Commission, 51 Inman Street
Cambridge, MA 02139

3. Return Your Ballot

Options for returning your ballot:

Return the ballot by mail using the postage-paid envelope provided with your ballot

Return the ballots in person to the Election Commission office at 51 Inman Street

Return the ballots in the sealed envelope to an election official at a designated Early Voting location during prescribed Early Voting hours.

Deliver your ballots to any one of the six (6) ballot drop boxes located in Cambridge. Drop box locations are listed on the last page of this guide.

POLLING SITES FOR ELECTION DAY

- 1-1 222 JACOBS STREET**, *Conference Center*
- 1-2 M.I.T. KRESGE AUDITORIUM**, *70 Massachusetts Avenue, Behind Stratton Center*
- 1-2A M.I.T. KRESGE AUDITORIUM**, *70 Massachusetts Avenue, Behind Stratton Center*
- 1-3 MILLERS RIVER APARTMENTS**, *15 Lambert Street, Cambridge Street Entrance*

- 2-1 VALENTE BRANCH LIBRARY**, *826 Cambridge Street, Side Entrance on Berkshire Street*
- 2-2 TRUMAN APARTMENTS**, *25 Eighth Street, Community Room, Thorndike Street Entrance*
- 2-3 O'CONNELL BRANCH LIBRARY**, *48 Sixth Street, Corner of Thorndike Street, Rear Entrance*
- 2-3A O'CONNELL BRANCH LIBRARY**, *48 Sixth Street, Corner of Thorndike Street, Rear Entrance*

- 3-1 PISANI CENTER**, *131 Washington Street*
- 3-2 MOSES YOUTH CENTER**, *243 Harvard Street, Lower Level, Rear Entrance*
- 3-3 CITY HALL**, *795 Massachusetts Avenue, Driveway Entrance*
- 3-3A CITY HALL**, *795 Massachusetts Avenue, Driveway Entrance*

- 4-1 MORSE SCHOOL**, *40 Granite Street, Main Entrance*
- 4-2 SAINT PETER'S EPISCOPAL CHURCH**, *838 Massachusetts Ave, Entrance on Sellers Street*
- 4-2A SAINT PETER'S EPISCOPAL CHURCH**, *838 Massachusetts Ave, Entrance on Sellers Street*
- 4-3 MARTIN LUTHER KING, JR. SCHOOL**, *102 Putnam Avenue, Playground Gym Entrance*

- 5-1 SALVATION ARMY HEADQUARTERS**, *402 Massachusetts Avenue*
- 5-2 M.I.T. KRESGE AUDITORIUM**, *70 Massachusetts Avenue, Behind Stratton Center*
- 5-3 MORSE SCHOOL**, *40 Granite Street, Main Entrance*

- 6-1 CITY HALL ANNEX**, *344 Broadway, Second Floor, Conference Room*
- 6-1A CITY HALL ANNEX**, *344 Broadway, Second Floor, Conference Room*
- 6-2 CAMBRIDGE RINDGE & LATIN SCHOOL**, *459 Broadway, Media Cafeteria, Cambridge Street Entrance*
- 6-3 CAMBRIDGE RINDGE & LATIN SCHOOL**, *459 Broadway, Media Cafeteria, Cambridge Street Entrance*

- 7-1 BALDWIN SCHOOL**, *Community Floor, 85 Oxford Street, Sacramento Street Entrance*
- 7-2 BALDWIN SCHOOL**, *Community Floor, 85 Oxford Street, Sacramento Street Entrance*
- 7-2A BALDWIN SCHOOL**, *Community Floor, 85 Oxford Street, Sacramento Street Entrance*
- 7-3 GUND HALL**, *48 Quincy Street, Cambridge Street Entrance*

- 8-1 GRAHAM AND PARKS SCHOOL**, *44 Linnaean Street., Playground Entrance*
- 8-2 FRIENDS CENTER**, *5 Longfellow Park, Community Room*
- 8-3 MARTIN LUTHER KING, JR. SCHOOL**, *102 Putnam Avenue, Playground Gym Entrance*

- 9-1 HOLY TRINITY ARMENIAN CHURCH**, *145 Brattle Street, Parking Lot Entrance on Sparks Street*
- 9-2 CAMBRIDGE WATER DEPARTMENT**, *250 Fresh Pond Parkway*
- 9-3 RUSSELL YOUTH CENTER**, *680 Huron Avenue, Second Floor*

- 10-1 PEABODY SCHOOL GYM**, *70 Rindge Avenue, Rear Entrance*
- 10-1A PEABODY SCHOOL GYM**, *70 Rindge Avenue, Rear Entrance*
- 10-2 GRAHAM AND PARKS SCHOOL**, *44 Linnaean Street., Playground Entrance*
- 10-3 CADBURY COMMONS**, *66 Sherman Street, Patio Entrance on Cadbury Rd*

- 11-1 RESERVOIR CHURCH**, *170 Rindge Avenue, Rear Entrance*
- 11-1A RESERVOIR CHURCH**, *170 Rindge Avenue, Rear Entrance*
- 11-2 RESERVOIR CHURCH**, *170 Rindge Avenue, Rear Entrance*
- 11-3 BURNS APARTMENTS**, *50 Churchill Avenue, Community Room*
- 11-3A BURNS APARTMENTS**, *50 Churchill Avenue, Community Room*

2023 CANDIDATES

City Council * Candidate for Re-election

Ayah A. Al-Zubi	2 B Dodge Street
Burhan Azeem*	96 Berkshire Street
Douglas P. Brown	35 Standish Street
John Hanratty	15 Mount Vernon Street
Peter Hsu	70 Gore Street
Adrienne Klein	7 Beech Street
Marc C. McGovern*	17 Pleasant Street
Joe McGuirk	314 Columbia Street
Gregg J. Moree	25 Fairfield Street
Federico Muchnik	82 Richdale Avenue
Patricia M. Nolan*	184 Huron Avenue
Carrie E. Pasquarello	230 Upland Road
Joan F. Pickett	59 Ellery Street
Frantz Pierre	22 Water Street
Sumbul Siddiqui*	283 Sidney Street
E. Denise Simmons*	188 Harvard Street
Jivan G. Sobrinho-Wheeler	187 Brookline Street
Paul F. Toner*	24 Newman Street
Dan J. Totten	54 Bishop Allen Drive
Vernon K. Walker	165 Main Street
Hao Wang	1 Longfellow Road
Ayesha M. Wilson	15 Concord Avenue
Robert Winters	366 Broadway
Catherine Zusy	202 Hamilton Street

School Committee

Alborz Bejnood	166 Auburn Street
Richard Harding, Jr.	189 Windsor Street
Elizabeth Clark Polner Hudson	236 Walden Street
Caroline M. Hunter*	23 Rockwell Street
Andrew R. King	71 Chilton Street
Frantz Pierre	22 Water Street
José Luis Rojas Villarreal*	19 Cornelius Way
Eugenia Schraa Huh	259 Washington Street
Robert Vincent Travers, Jr.	54 Fulkerson Street
David J. Weinstein*	45 S. Normandy Avenue
Rachel B. Weinstein*	60 Standish Street

What will the ballots look like?

There will be two ballots: one for City Council and one for School Committee. Specimen ballots are posted online at www.cambridgema.gov/elections

More Information On Candidates

Newspapers, websites, and local organizations are good sources of information about the candidates. Many candidates have campaign websites that you can find by searching online.

Except as required by law, the City of Cambridge Board of Election Commissioners does not participate in any campaign activities, including but not limited to:

- ▶ Providing information about candidates' beliefs or positions
- ▶ Regulating or fact-checking campaign materials
- ▶ Organizing or advertising candidate debates

Campaign Finance

City Council candidates file campaign finance reports with the Office of Campaign and Political Finance (OCPF), a state office.

School Committee candidates file campaign finance reports with the Election Commission.

To view Campaign Finance Reports, visit: www.cambridgema.gov/cfr

MARKING YOUR BALLOT

Voting is easy! The City Council and School Committee ballots list candidates with numbered ovals next to their names. Just rank the candidates in order of preference by filling in the numbered ovals.

Valid Markings

Mark your choices by completely filling in the numbered ovals.

Fill in the number one (1) oval next to your first choice. Fill in the number two (2) oval next to your second choice, and so on.

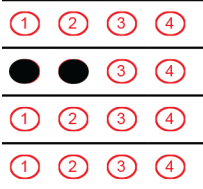
You don't need to rank all the candidates: you may fill in as many or as few choices as you please.

Only one vote per candidate. Only one vote per column.

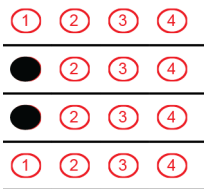
DO NOT US

JUNIOR MINTS, 95 Movie Road	(1)	(2)	(3)	●	(5)	(6)
THREE MUSKETEERS, 333 Nougat Street	(1)	●	(3)	(4)	(5)	(6)
WERTHER ORIGINAL, 753 Caramel Avenue	(1)	(2)	(3)	(4)	(5)	(6)
YORK PEPPERMINT PATTIE, 1940 Sensation Street	●	(2)	(3)	(4)	(5)	(6)
MARSHMALLOW PEEP, 432 Seasonal Lane	(1)	(2)	(3)	(4)	(5)	(6)
GOOD A. PLENTY, 35 Licorice Street	(1)	(2)	●	(4)	(5)	(6)

Invalid Markings



Filling in more than one choice for a candidate



Giving more than one candidate the same ranking



Ovals that are not filled in completely and cannot be read by the machine

Just be aware that each ballot might have the candidates in a different order! The candidates' names are rotated in alphabetical order on the ballot so that each candidate appears in the desirable top-of-the ballot position on an equal number of ballots.

If you make a mistake, you can return your ballot to the election worker and receive another one. You are limited to three attempts at completing your ballot.

Proportional Representation

Since 1941 the City of Cambridge has elected its City Council and School Committee by Proportional Representation (PR).

Elections for nine members of the City Council and six members of the School Committee are held in November in odd-numbered years.

PR elections ensure the fair representation of all voters. Any group of voters that number more than one-tenth of the votes cast can be sure of electing at least one member of a nine-member Council, but a majority group of voters can be sure of electing a majority of the Council. The majority elect a majority of seats, but minority groupings also win their fair share of representation.

PR elections also ensure that no ballot is wasted. Your ballot will only count for one candidate. If the candidate you rank first loses, or already has enough votes to win, your ballot will be transferred to the next choice you marked.

Ranking only one candidate does not give that candidate an advantage, so rank as many candidates as you like.

HOW THE BALLOTS ARE COUNTED

First Count:

The ballots are sorted by the number one (#1) vote on each ballot. Candidates are ranked according to the number of first choice votes received.

Calculate Quota:

Quota is determined by the following formula:

$$\text{Quota} = \frac{\text{Number of valid Ballots}}{\text{Number to elect} + 1} + 1$$

For example, if 24,990 valid ballots are cast for City Council, the quota will be 2,500 (24,990 divided by 10, plus 1).

Distribute the Surplus:

Any candidates who reach the necessary quota with number one (#1) votes are declared elected. Any extra ballots they receive beyond the quota are redistributed to the candidates marked next in preference on the ballot. For example, if quota is 2,500 and a candidate receives 3,000 first choice ballots, 500 ballots will be transferred.

Eliminating Candidates:

The count continues with the elimination of candidates who have fewer than fifty number one (#1) votes. Their ballots are redistributed to the other candidates according to the next preference marked. After each distribution, each candidate's new vote total is established. Then the candidate with the lowest number of votes is declared defeated and that candidate's ballots are redistributed to the voter's next indicated preference.

Electing Candidates:

As candidates reach the quota through the addition of redistributed ballots to their totals, they are declared elected and no further ballots are transferred to them. This process continues until all candidates have been eliminated except the nine winners for city council or six winners for school committee.

Interested in Working on Election Day?

The Election Commission accepts applications throughout the year from registered voters who are interested in working at the polls on Election Day.

Download an application at:

www.cambridgema.gov/ElectionWorkers

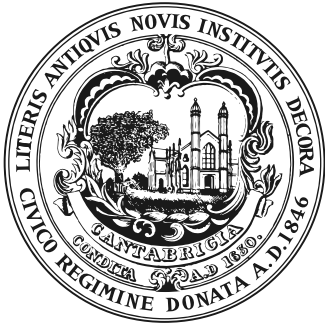
Applications are also available at the Election Commission office.

Election Results:

On Election Night, all of the ballots that went through the scanners on Election Day, including absentee ballots, will be tabulated. Preliminary results will be posted on the City of Cambridge homepage at www.cambridgema.gov on Election Night, once every precinct has reported to the Central Tabulation Center at the Senior Center.

Beginning the day after the election, the Commissioners will review all write-in ballots and auxiliary ballots by hand and add these to the results. Auxiliary ballots are ballots that cannot be read by the scanners. These results are unofficial results because they still do not include all ballots.

The Election Commission will meet 10 days after the election to count any overseas absentee ballots or provisional ballot that are determined to be valid. Once these final ballots have been added to the results, the count will be complete and the Election Commission will release the official results.



City of Cambridge Board of Election Commissioners

51 Inman Street, Cambridge, MA 02139 • Phone: 617-349-4361
Fax: 617-349-4366 • Email: elections@cambridgema.gov

PRESORTED STD
US POSTAGE
PAID
CAMBRIDGE MA
PERMIT NO 58215

Commissioners:
Ethrige A. King, Jr.
Larry W. Ward
Charles J. Marquardt
Victoria A. Harris

Executive Director:
Tanya L. Ford

Assistant Director:
Lesley Waxman

Residential Customer
Cambridge, MA

ELECTION COMMISSION 24-HOUR OFFICIAL BALLOT DROP BOX LOCATIONS FOR THE NOVEMBER 7, 2023 MUNICIPAL ELECTION

MAIN DROP BOX LOCATION

The following location will be open from Friday, October 13, 2023 to Election Day, Tuesday, November 7, 2023 at 8 p.m. **This drop box location will be the ONLY one open on Election Day, November 7, 2023.**

Coffon Building

51 Inman Street
Right-side of the front entrance

SATELLITE DROP BOX LOCATIONS

The following locations will be open from Friday, October 13, 2023, to Monday, November 6, 2023, at 8pm. **Satellite locations will NOT be open on Election Day, November 7, 2023.**

City Hall

795 Massachusetts Avenue
Near the rear door

Morse School

40 Granite Street
Near the front entrance

Cambridge Police Headquarters

125 6th Street
Near the front of the building

Maria L. Baldwin School

85 Oxford Street
Right-side of the Oxford Street entrance

O'Neill Library

70 Rindge Avenue
Adjacent to the entrance stairs

Multilingual Resources:



বাংলা



हिन्दी



عربي



ESPAÑOL



中文



PORTUGUÊS



KREYÒL AYISYEN



ENGLISH

Please make sure your voted ballot is sealed inside of the jurat envelope (yellow envelope) and the affirmation on the jurat envelope has been signed prior to inserting the envelope into the drop box.