



City of Cambridge
Community Development Department

Clarendon Avenue Playground

North Cambridge Stabilization Committee - Wednesday, March 27, 2019



About Us

Cambridge Community Development Department

CITY HALL ANNEX - 344 BROADWAY, CAMBRIDGE, MA 02139

As the planning agency for the City of Cambridge, the Community Development Department (CDD) guides the future growth of the community to promote a more **livable, sustainable, and equitable** Cambridge. CDD includes five programmatic divisions – *Community Planning, Zoning and Development, Housing, Economic Development, and Environmental and Transportation Planning* – that work together to enhance the character and diversity of the city's neighborhoods, preserve and create affordable housing, promote accessible and sustainable mobility, build environmental resilience, and foster economic vitality.

Learn more @ www.cambridgema.gov/CDD

About Cambridge

With over 110,000 people located within a 6.4 square mile area, Cambridge is a unique community with a strong mix of cultural, demographic and social diversity, intellectual vitality and technological innovation. Located across the Charles River from Boston, Cambridge is home to world-renowned educational institutions, Harvard University and Massachusetts Institute of Technology (MIT), Cambridge has developed into an international community with 27% of residents being foreign born, representing over 70 countries and speaking more than 40 different languages.

Welcome!

The Clarendon Avenue Playground will undergo targeted repair work and equipment upgrades to improve play conditions for and the safety of its users.

This work is consistent with the City's ongoing commitment to the *Healthy Parks and Playgrounds Initiative*, which guides all improvements to the City's playgrounds, parks, and open spaces. The goals of the *Healthy Parks and Playgrounds Initiative* are to provide a diverse range of play opportunities throughout the city that are fun, physically challenging, creatively stimulating and socially engaging, and that serve children and adults of all different age groups, ability levels, and interests.

Agenda:

- **Healthy Parks & Playground Initiative**
- **Clarendon Avenue Playground – Conceptual Design**
- **Questions & Answers**





Healthy Parks & Playgrounds Initiative

What Is It?

- the *Healthy Parks & Playground Initiative (2009)* guides all improvements to the City's playgrounds, parks, and open spaces
- explored the role of parks and playgrounds in the health, learning, and overall development of children, and the ways in which they support strong families and communities
- created recommendations for new and innovative approaches to the design and operation of future public parks and playgrounds in Cambridge



Healthy Parks & Playgrounds – Goals

These goals aim to provide a diverse range of play opportunities throughout the city that are fun, physically challenging, creatively stimulating and socially engaging, and that serve children and adults of all different age groups, ability levels, and interests:

- parks and playgrounds should be **integrated play environments**, not just collections of play features in an enclosed area
- play environments should **balance the need for a reasonable level of safety with the need for challenge, adventure and risk-taking**
- play environments should support **curiosity, creativity and imagination**
- play environments should **stimulate physical activity** with many different types and combinations of movements



Healthy Parks & Playgrounds – Goals *(cont.)*

These goals aim to provide a diverse range of play opportunities throughout the city that are fun, physically challenging, creatively stimulating and socially engaging, and that serve children and adults of all different age groups, ability levels, and interests:

- a diverse range of play environments should be provided across the city to serve a **full range of age groups and interests**
- play environments should be **community places**
- meaningful play opportunities should be **available to children of all levels of ability**
- play opportunities should be provided during **all seasons of the year and all weather conditions**



What To Expect?

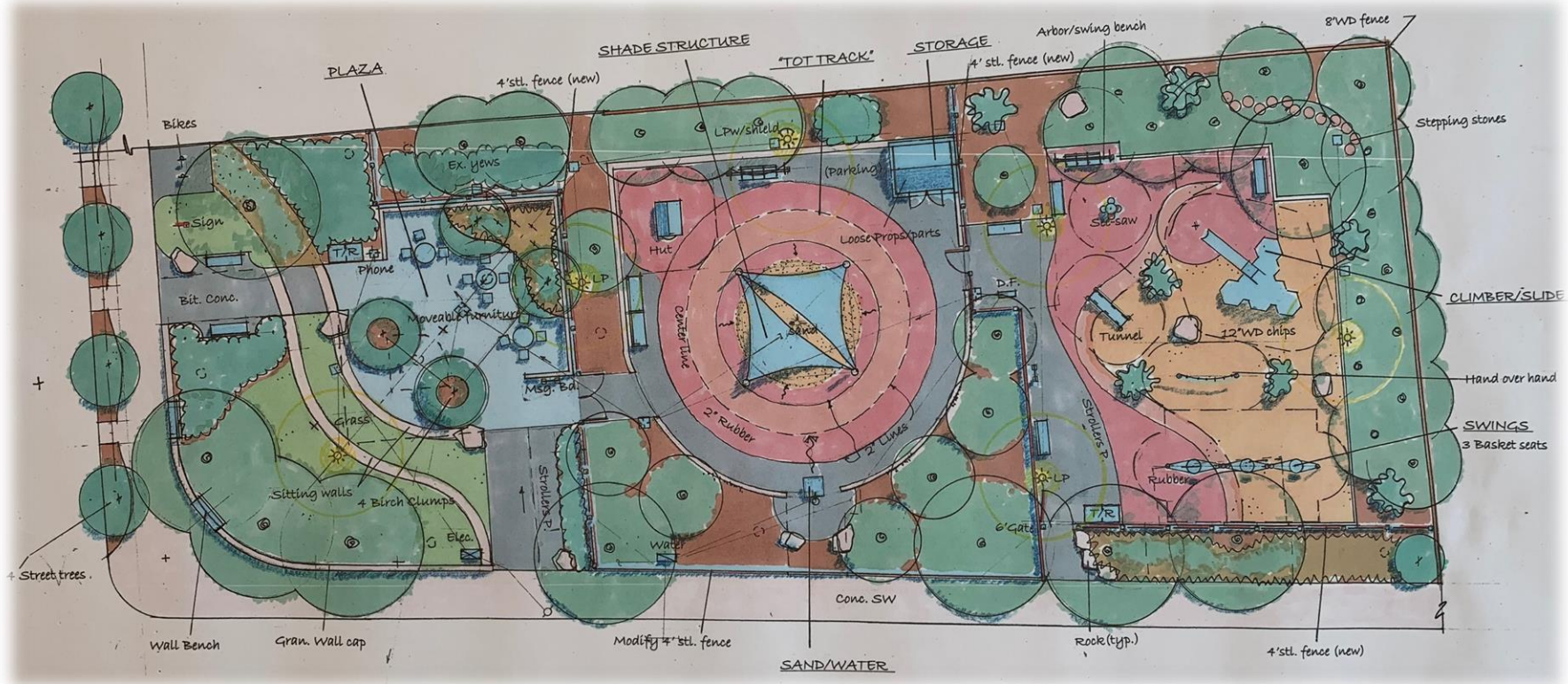
In keeping with the *Healthy Parks & Playgrounds Initiative*, the following items are some of what the City looks to incorporate in our playgrounds, parks, and open spaces:

- different parks for different needs
- more focus on “environment” than “equipment”
- more “moveable,” less “fixed” (e.g. swinging, spinning, building)
- age-appropriate challenges
- spaces to explore and learn, spaces to socialize
- natural materials and plantings
- imaginative, creative, and artistic elements
- play outside of playgrounds (e.g., sidewalks, plazas)

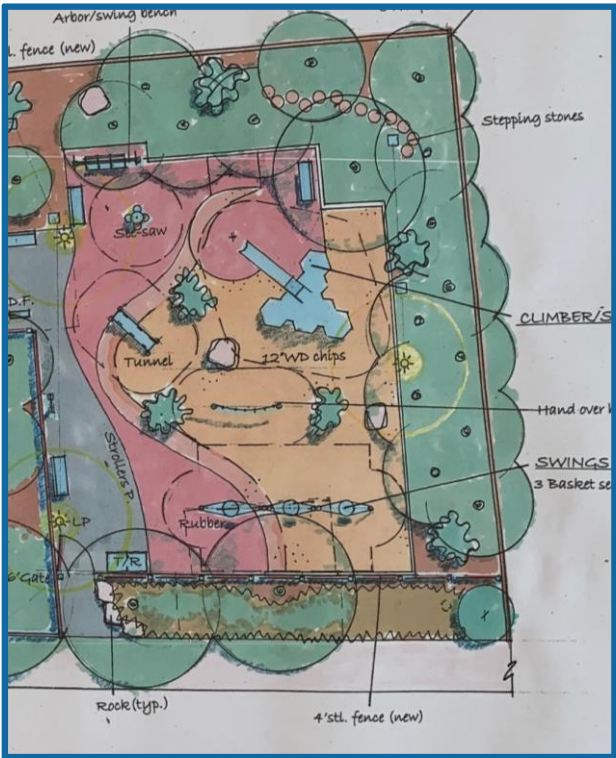
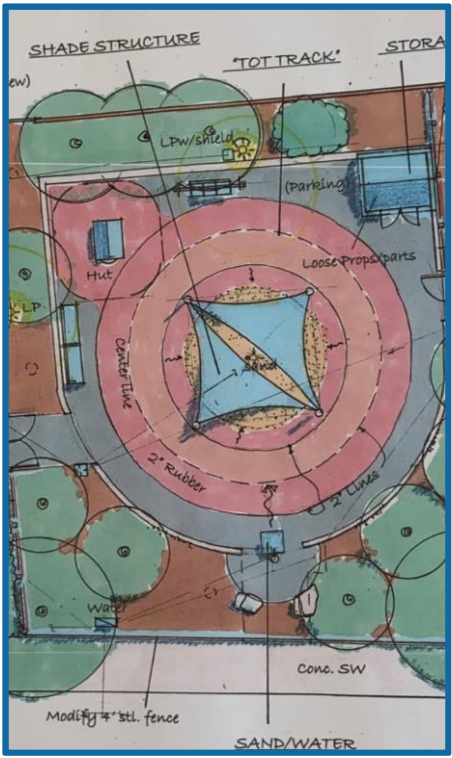
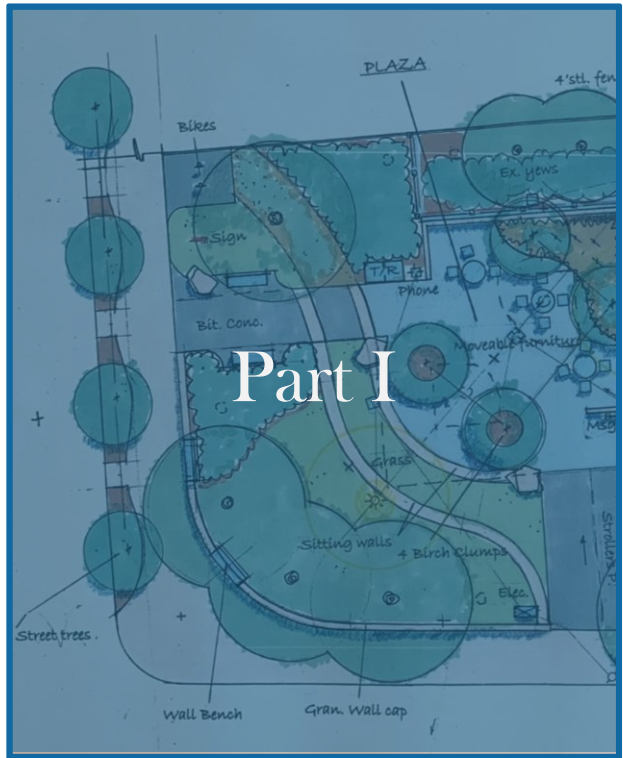




Conceptual Design



- Clarendon Ave Park is already great park that is accessible, interesting, enjoyable, and fun. There's a strong sense of community and shared ownership.
- The park is in need of a “make over” – targeted repairs and equipment upgrades and other improvements – but not a complete renovation.

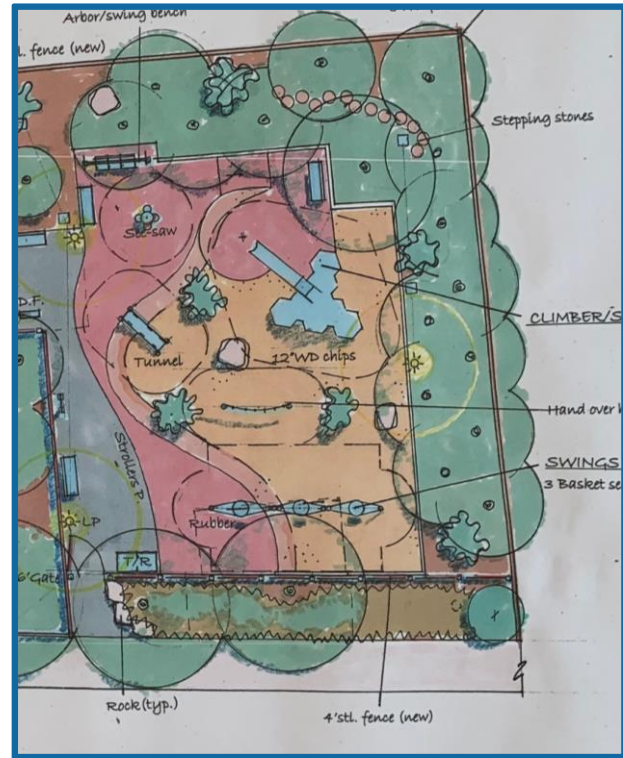
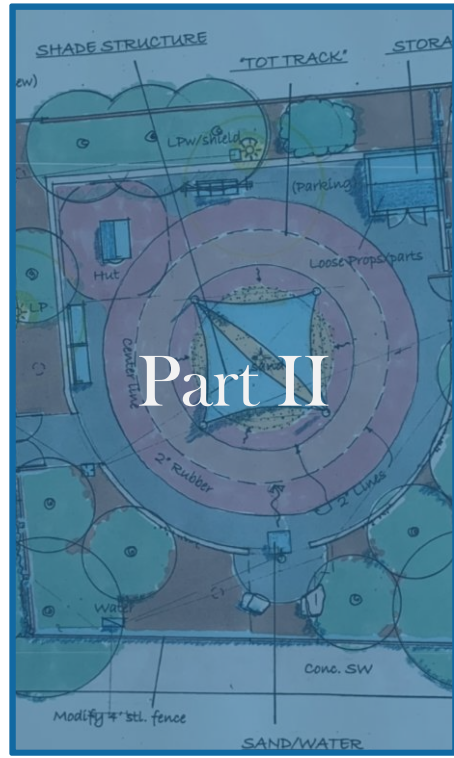
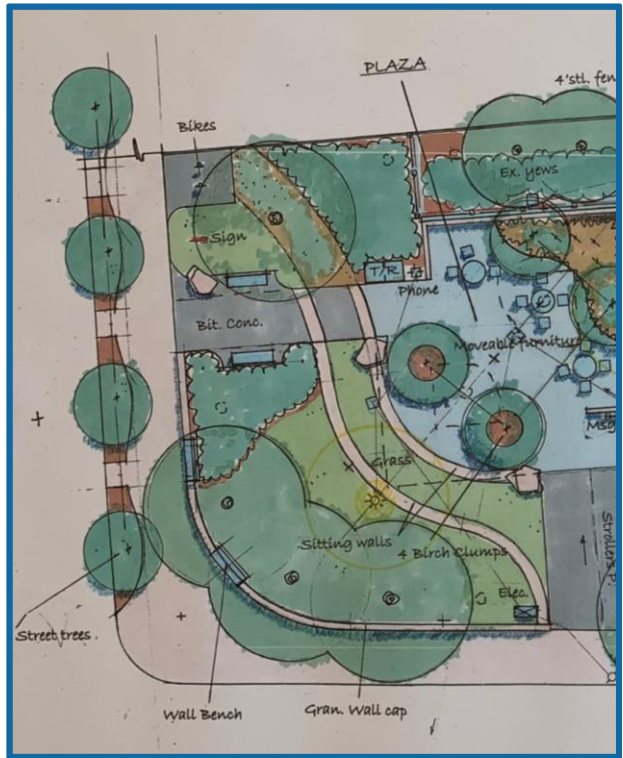


a more energized passive area that accommodates a variety of uses

Part I - Mass Ave

- this “front” or more visible side of the park shall become a more “energized”, flexible use space, with more comfortable moveable furniture and new plantings, more connected and generally more welcoming
- the existing masonry walls will be repaired, a granite wall cap added, and seats will be integrated into the sitting wall



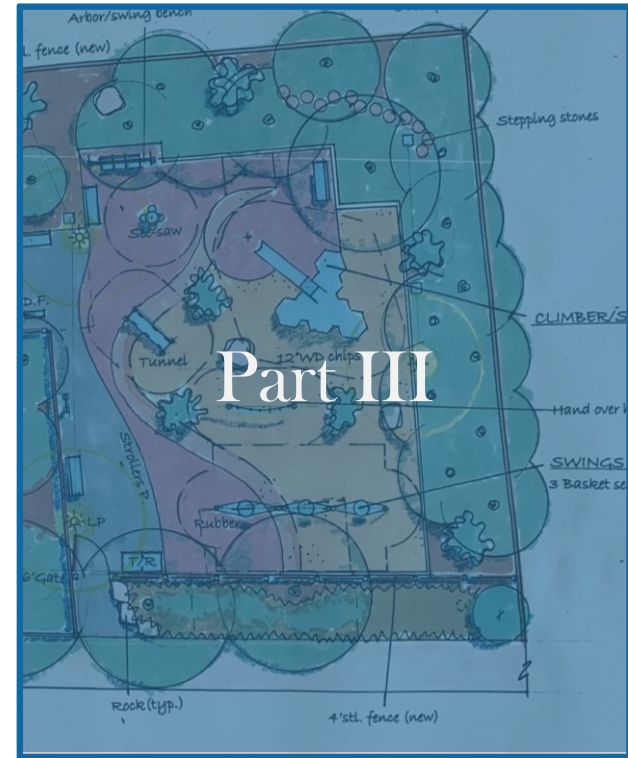
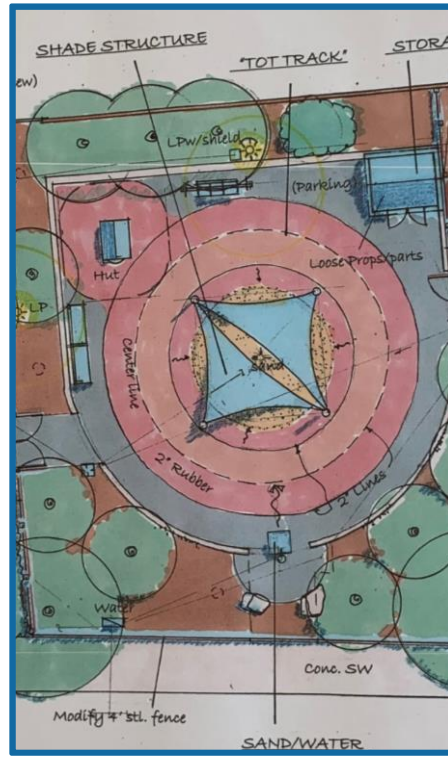
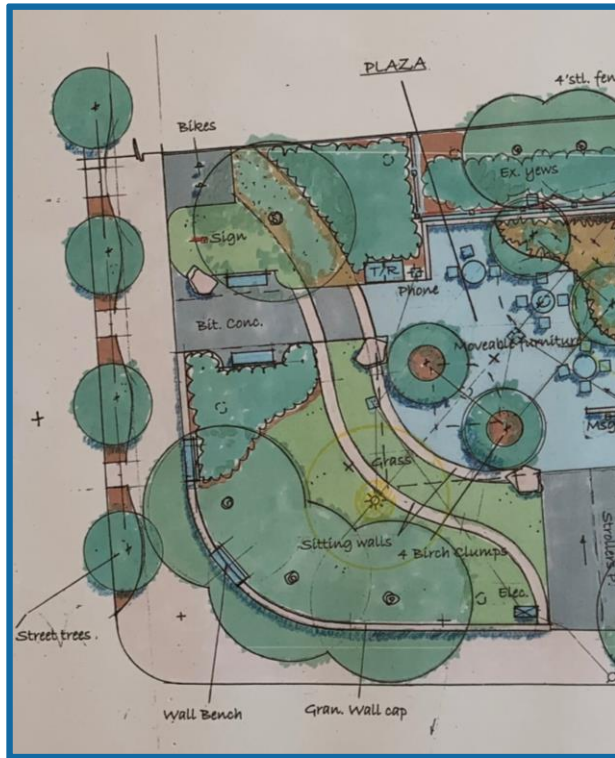


an enhanced play space for younger children ages 0-4

Part II - Center Play Space

- a new, shaded sand & water play pit, play house, storage shed (for loose play props & blocks), a sand/water play table (with farm pump), and more comfortable seating (including swing benches) will be added





a more active playground for kids ages 5-12

Part III - Active Playground

- the playground will include a unique modular climbing structure with a slide, three “basket” style swings for group use, a small see-saw, short tunnel with peek-a-boo windows, and hand over hand rings
- the priority here is to provide movement and more challenging climbing experiences, something almost totally lacking with the current playground

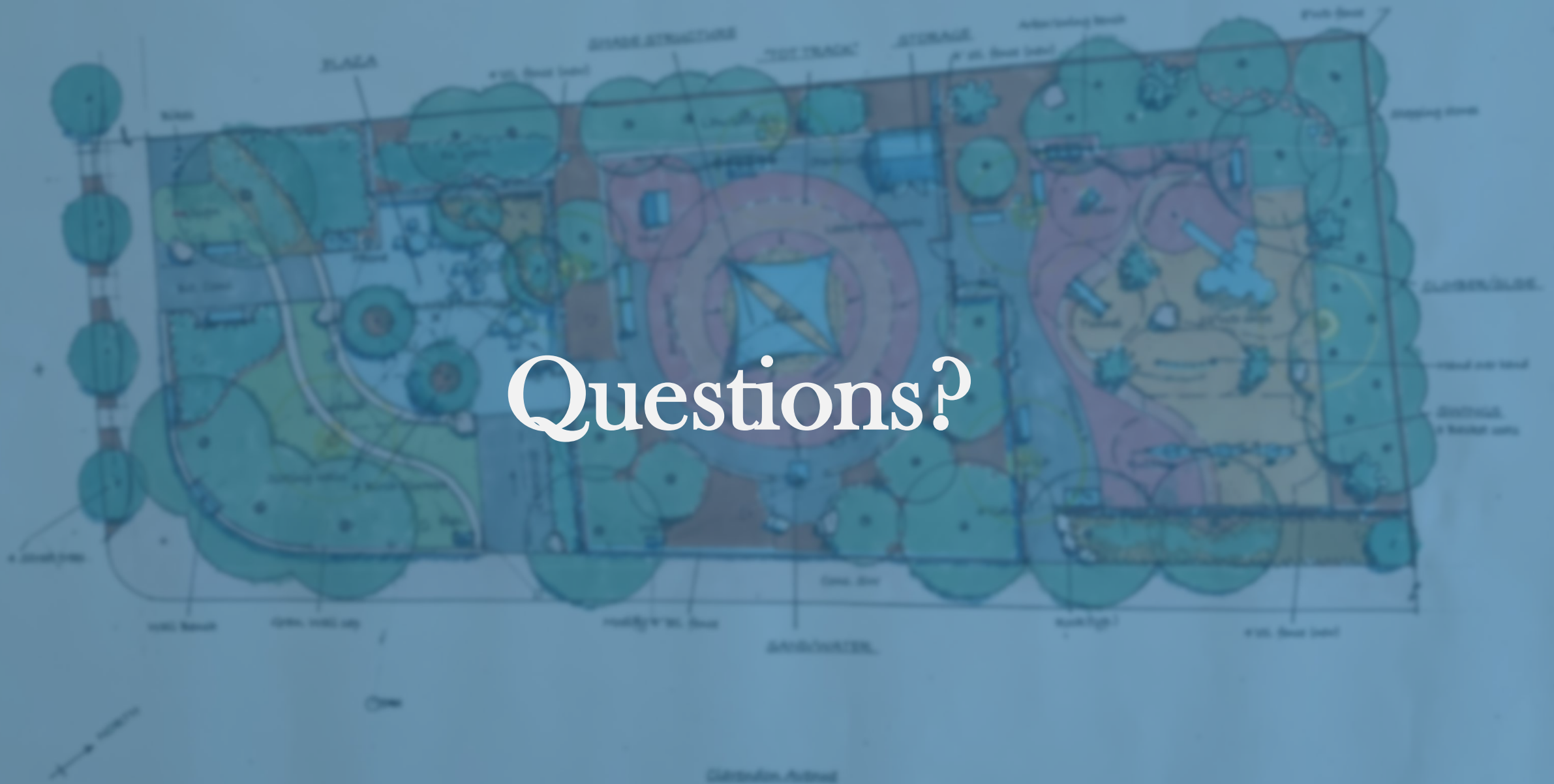


Part III - Active Playground

- the playground will include a unique modular climbing structure with a slide, three “basket” style swings for group use, a small see-saw, short tunnel with peek-a-boo windows, and hand over hand rings
- the priority here is to provide movement and more challenging climbing experiences, something almost totally lacking with the current playground



Questions?



For More Information:

www.cambridgema.gov/clarendonave

Contact Information:

Wendell T. Joseph

wjoseph@cambridgema.gov – (617) 349-9462

Thank You!!