





Working Group Meeting 1

January 29, 2019

Today's Agenda

- **Introductions** 15 min.
- **Scope & Schedule** 20 min.
- **Working Group Overview** 15 min.
- **City Policies and Past Planning** 15 min.
- **Icebreaker** 30 min.
- **Questions & Comments** 10 min.
- **Next Steps** 5 min.

Please note: Doors open at 5:45pm, meeting starts at 6pm on the dot!

Introductions

Project Team

City Team

- **Jerry Friedman**
Public Works
- **Tegin Teich**
Community Development
- **Patrick Baxter**
Traffic, Parking & Transportation

Consultant Team

- HDR Engineering
- Halvorson Design Partnership
- McMahon Associates
- Project for Public Spaces
- GEI Consultants
- BSI Engineering
- Feldman Land Surveyors

The Working Group

- Dan Beaulieu
- Seanna Berry
- Sai Boddupali
- Valerie Bonds
- Matthew Ciborowski
- Gabriel Cira
- Abby Duker
- Samuel Gebru
- Melissa Greene
- Kai Long
- Neil Rodriguez
- Randy Stern
- Andrew Tarsy
- Christopher Tassone
- Annie Tuan
- Olivia Turner

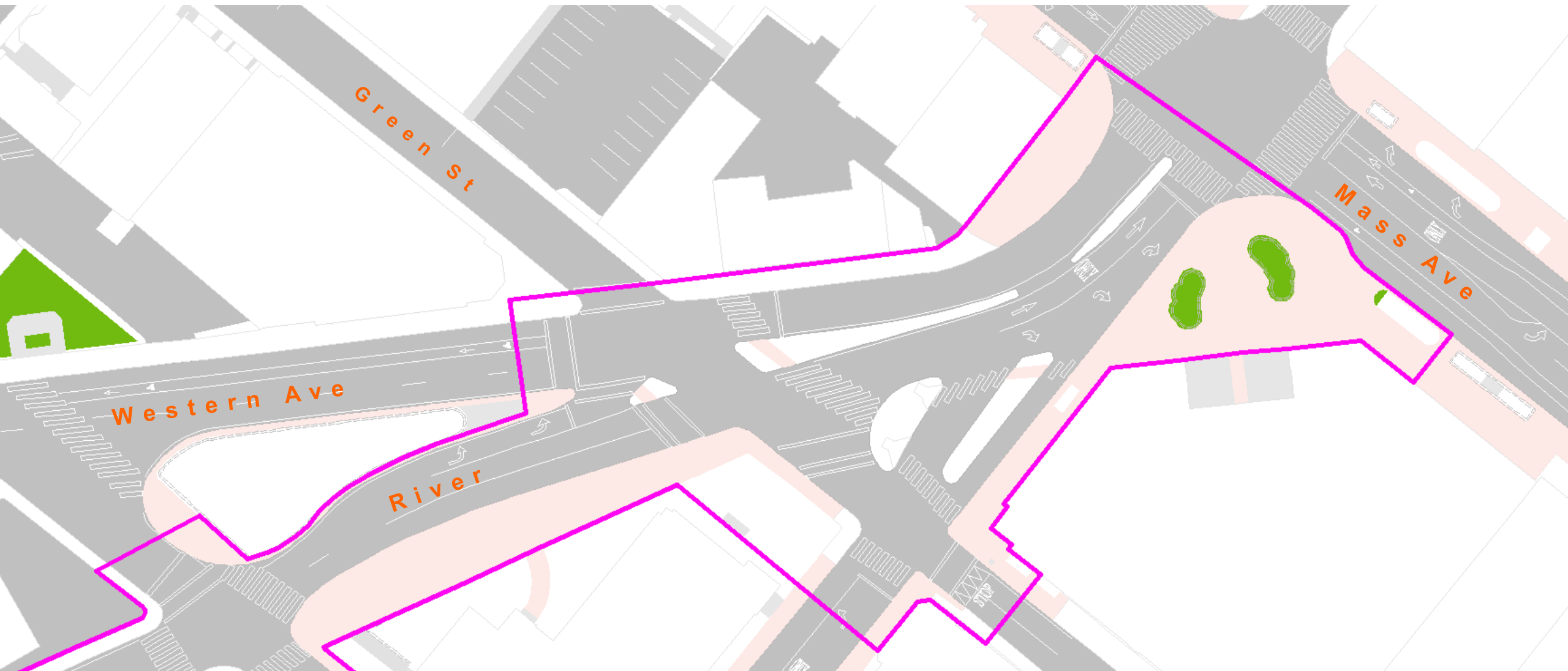


Scope & Schedule

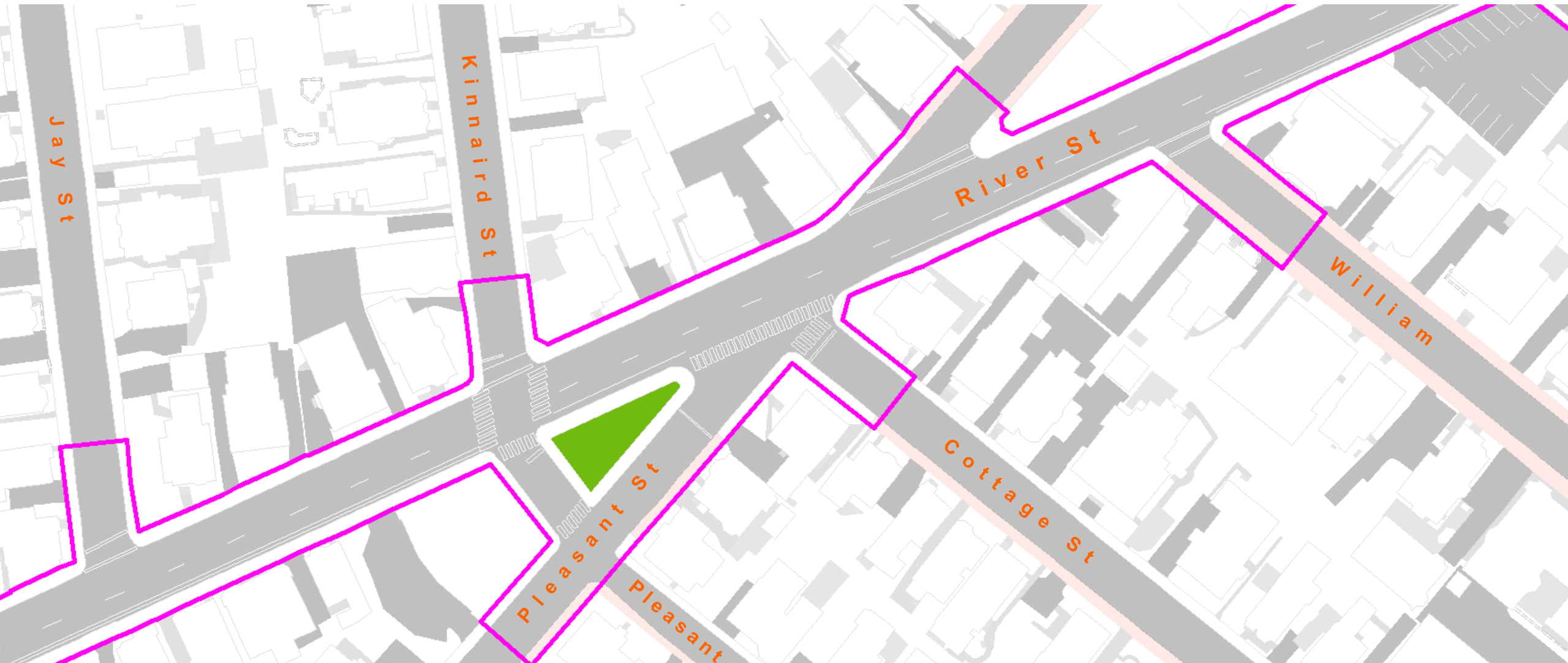
Project Limits



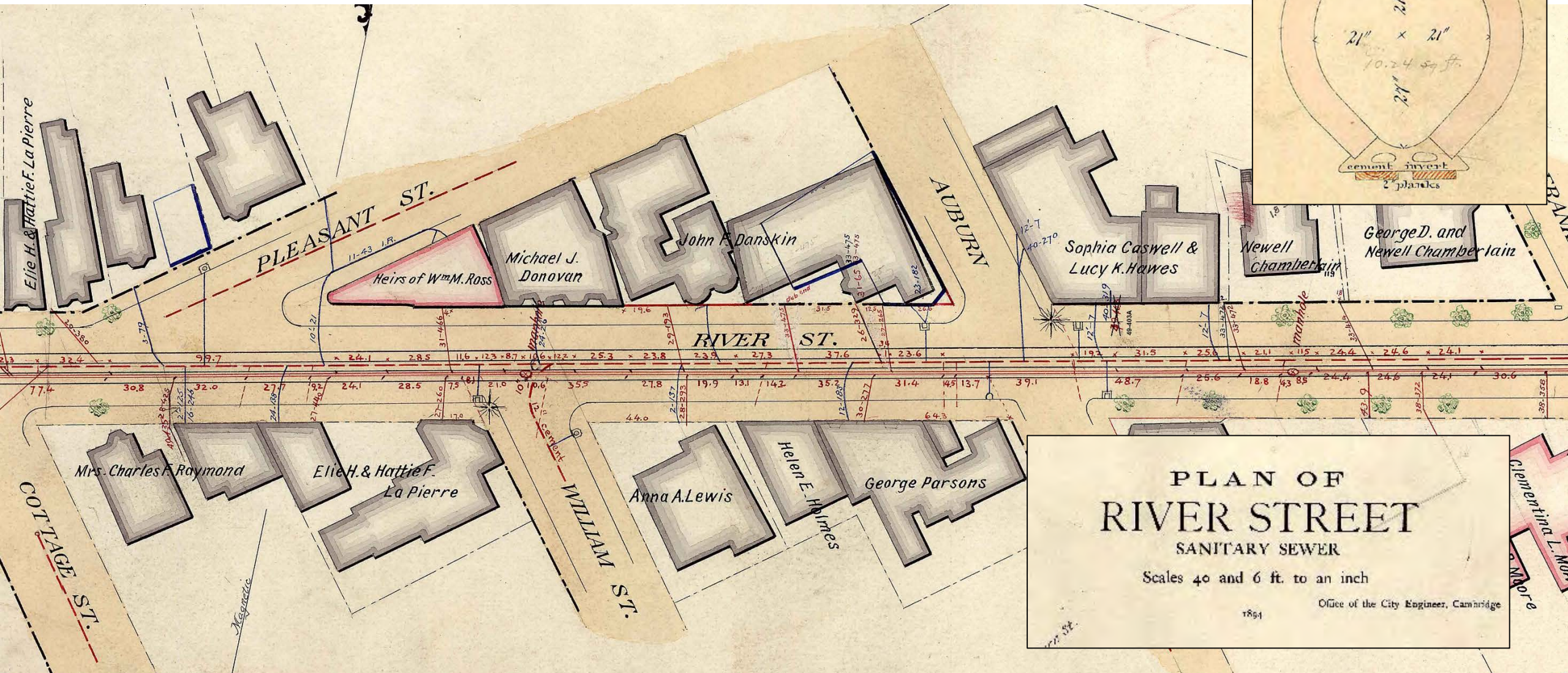
Project Limits - Carl Barron Plaza



Project Limits - Tubman Square



Project Purpose: Infrastructure Renewal



Consider planning for greater electricity, natural gas, and telecom needs?

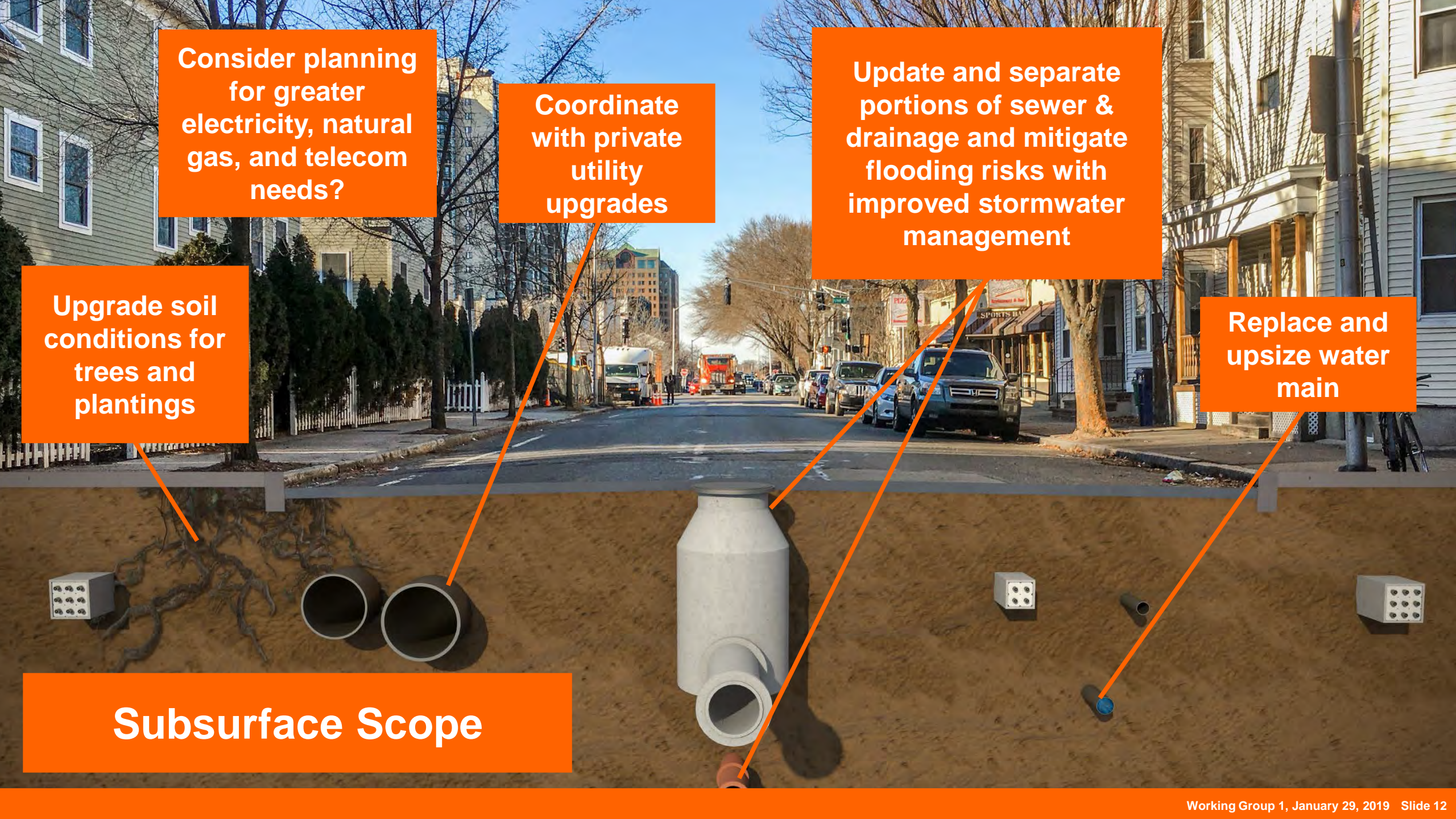
Coordinate with private utility upgrades

Update and separate portions of sewer & drainage and mitigate flooding risks with improved stormwater management

Upgrade soil conditions for trees and plantings

Replace and upsize water main

Subsurface Scope



Improve tree canopy

Improve sidewalks and crosswalks

Provide separated bicycle facility

Optimize bus stops, improve amenities, and address bus reliability and delay

Consider opportunities to support local businesses with "flex space"

Reduce speeding & maintain appropriate vehicle operations

Surface Scope



Maintain an inclusive space

Update & reconfigure street furniture and landscaping

Consider “edge quality” and circulation

Consider public art

Urban Design includes:

- Carl Barron Plaza
- Tubman Square
- All of River Street’s edges

Urban Design Opportunities

The Design Process

Collect Data & Issues

- Survey
- Counts (all users)
- Level of service, level of comfort (multi-modal)
- Vehicle Storage
- MBTA bus data
- Sewer & drain
- Utility connections
- Flow-metering
- Soil & tree
- Urban design
- Identified by Public




Establish Vision

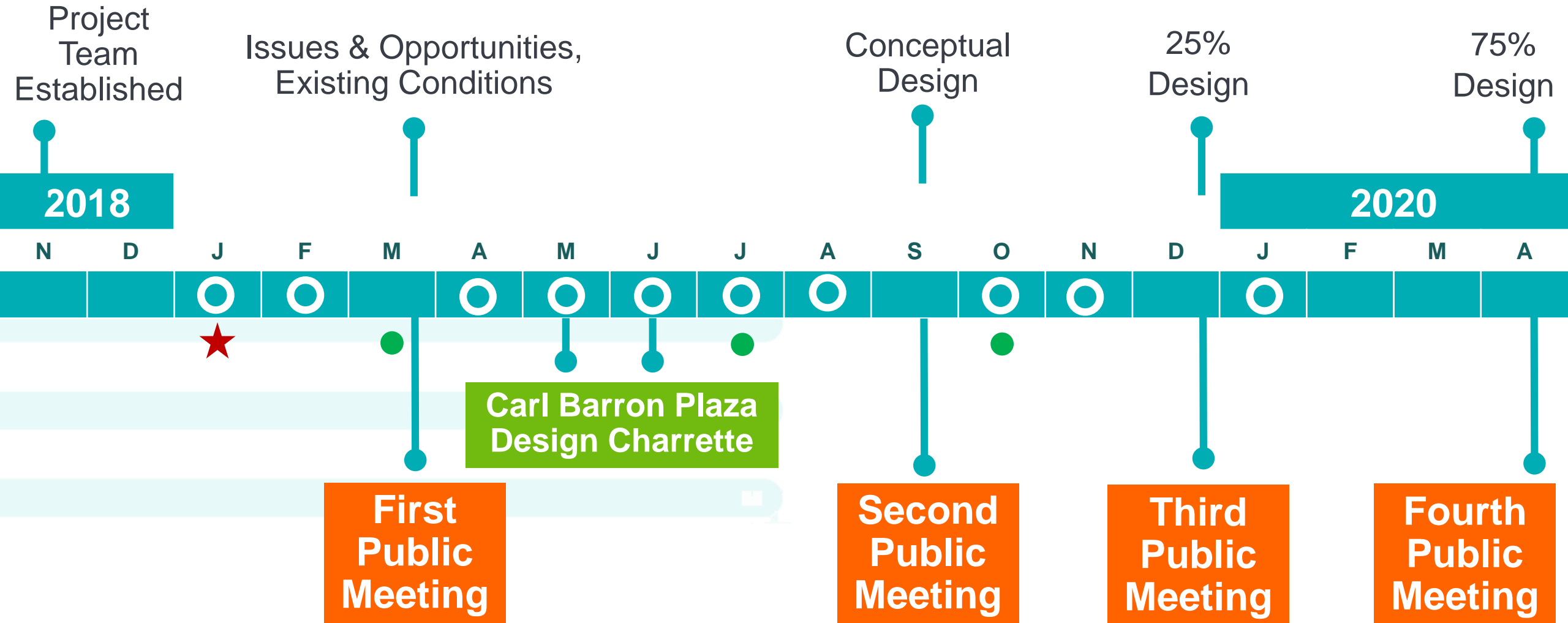
- Gather existing planning & policies, adapt to local context
- Gather community goals, ideas, and aspirations through a broad and inclusive process

Complete Design

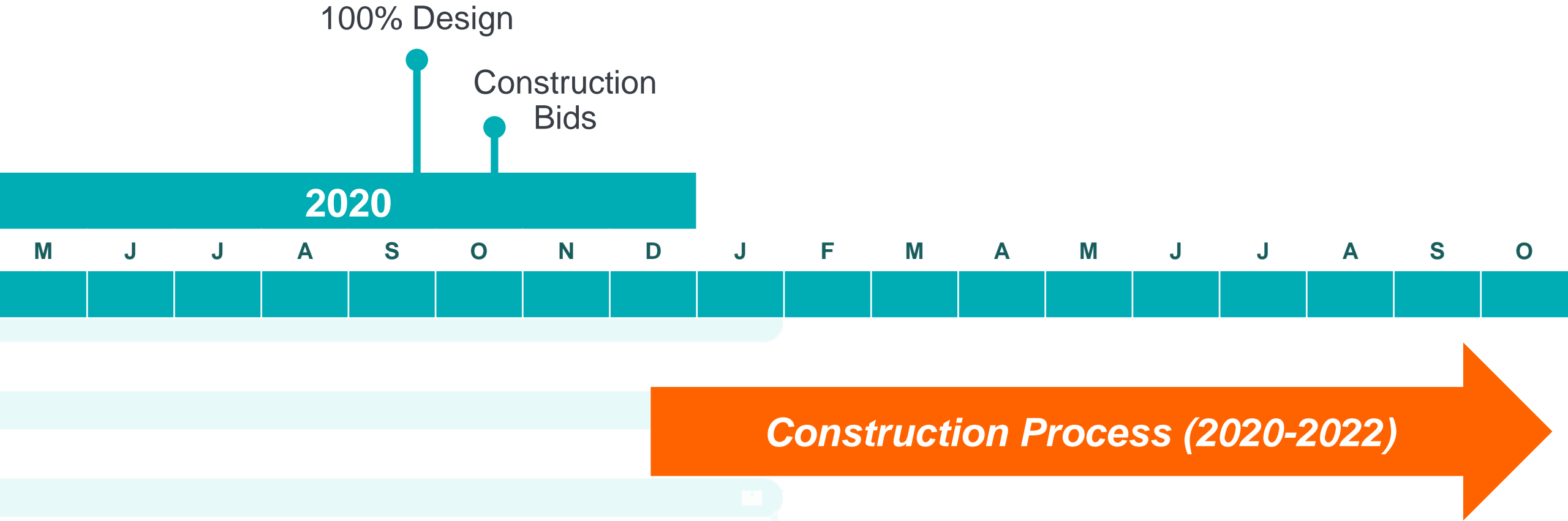
- Develop design alternatives
- Analyze alternatives
- Select alternative
- 25%, 75%, and 100% design
- Construction documents & permitting

Expected Timeline

-  Working Group Meetings
-  Community Walks
-  Today



Expected Timeline



Working Group Overview

The Working Group

- Dan Beaulieu
- Seanna Berry
- Sai Boddupali
- Valerie Bonds
- Matthew Ciborowski
- Gabriel Cira
- Abby Duker
- Samuel Gebru
- Melissa Greene
- Kai Long
- Neil Rodriguez
- Randy Stern
- Andrew Tarsy
- Christopher Tassone
- Annie Tuan
- Olivia Turner

Working Group Logistics

Working Group or Public Meeting will generally happen every 4th Tuesday (*Alternate date)

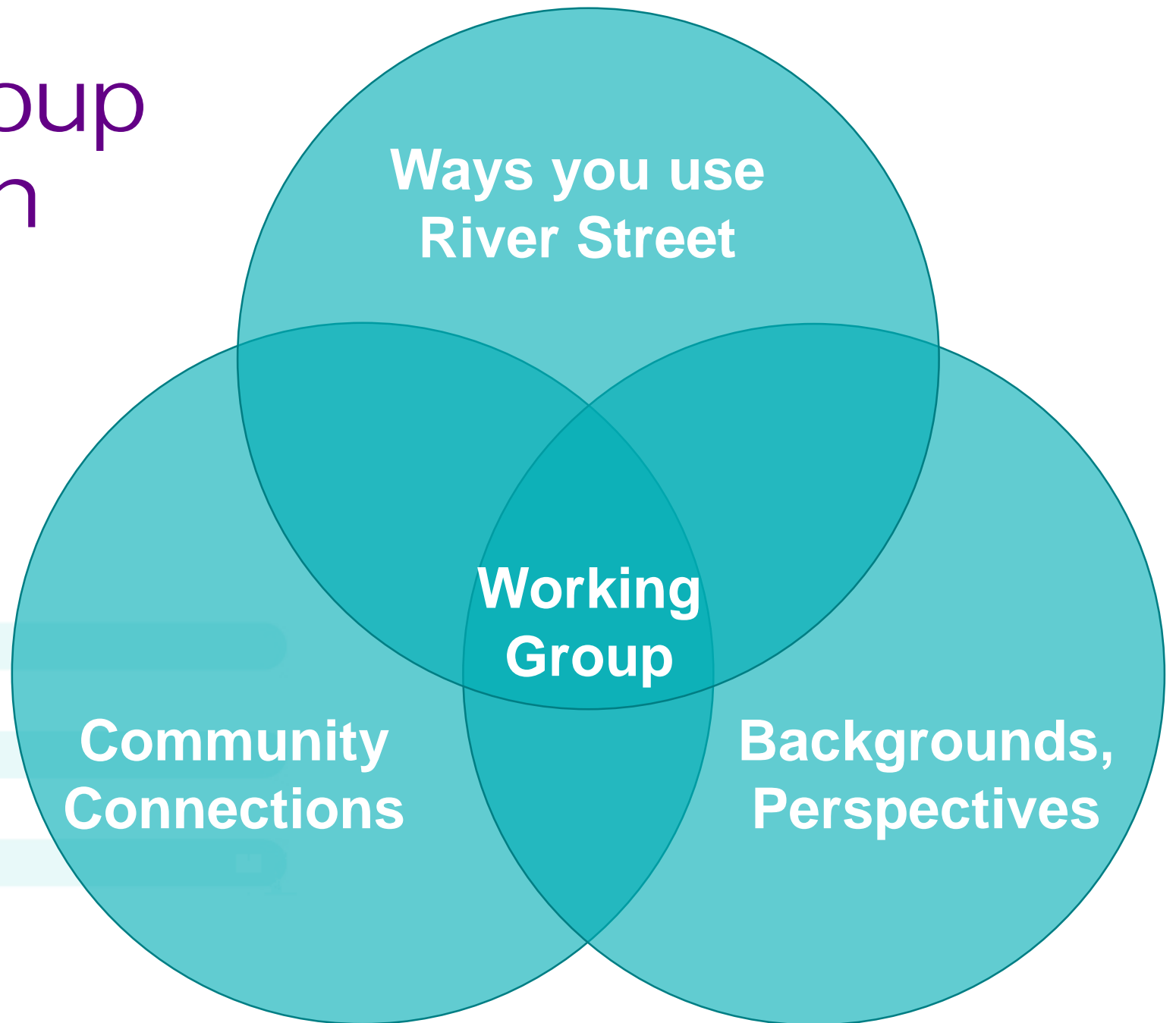
Meeting Notification: 2 weeks

2019 Working Group Meetings: 1/29, 2/26, 4/23, 5/28, 6/25, 7/23, 8/27, 10/22, 11/19*.

2019 Proposed Public Meetings: March, September, December

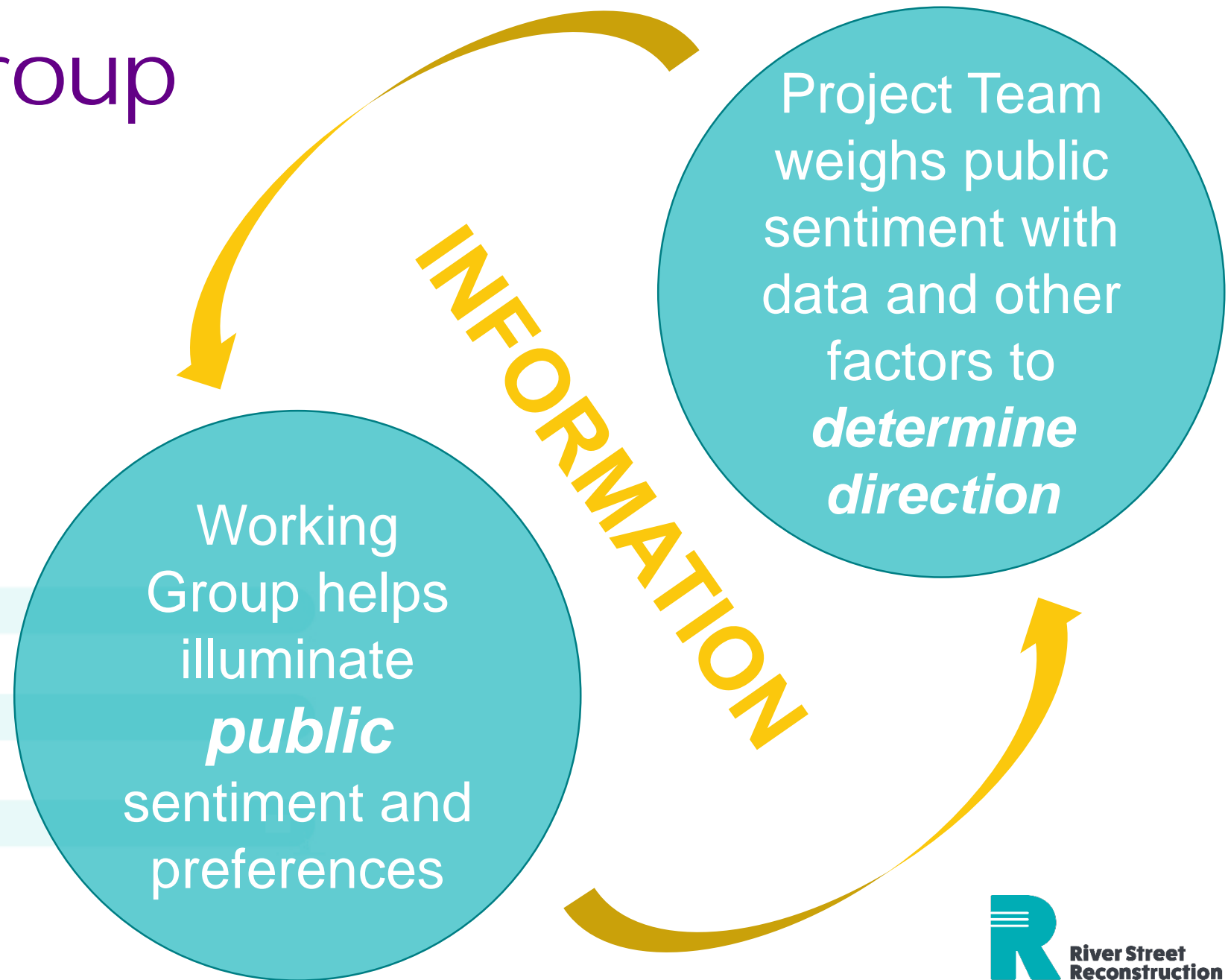
***Note:** there will also be public walks, street teams, and information tables at other community events throughout this design effort.*

Working Group Composition



Working Group Role

Public (noun)
All the people,
esp. all those in
one place or
country.



Balancing Diverse Needs

When conversing with this group and the broader community, needs or goals need to be balanced to lead to good outcomes. Considerations:

- Many needs, limited space
- Respect all needs
- Solutions must reach beyond individual preferences
- Count people (regardless of the way they choose to travel)

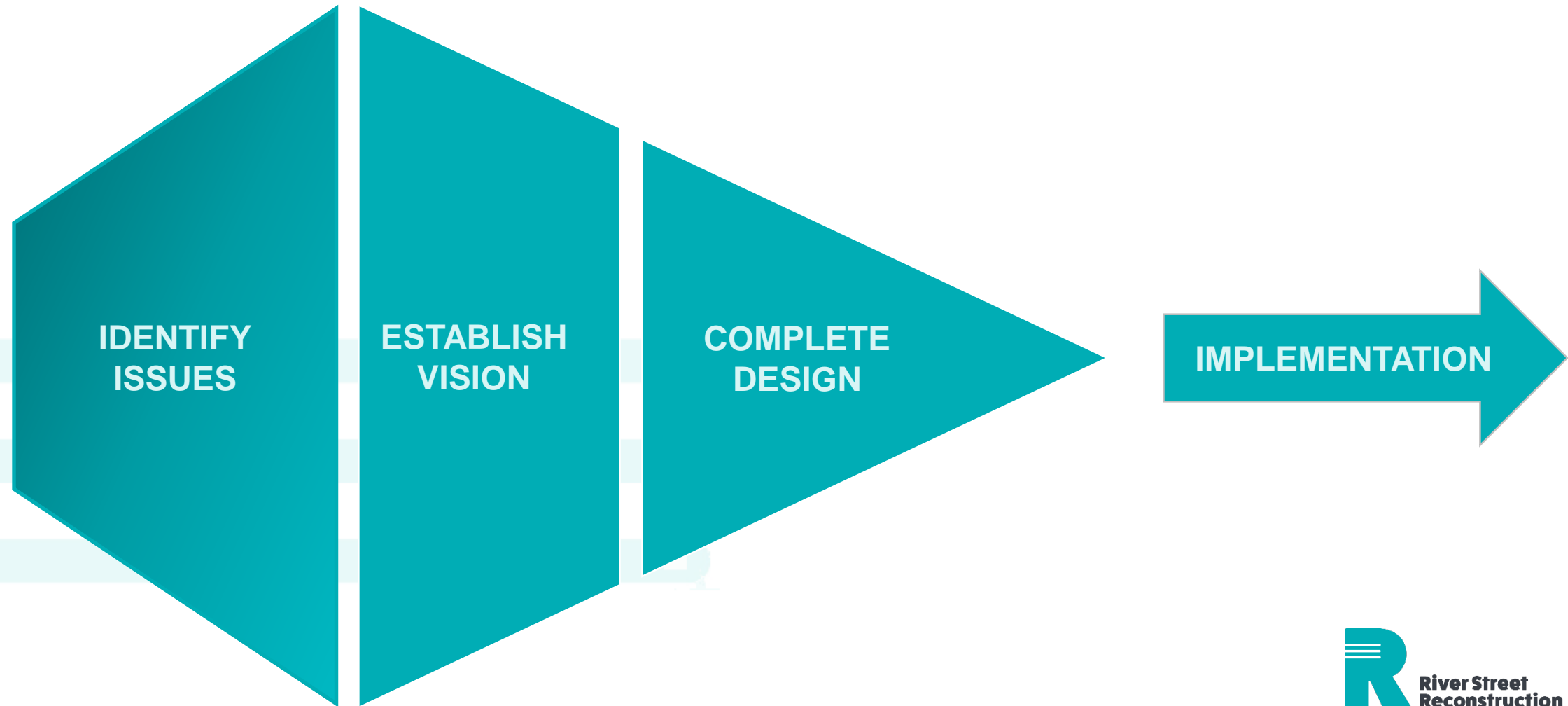
A Few Working Group Guidelines

- Keep an open mind and respect other opinions
- Speak, and let others be heard
- Read agenda and materials before the meeting
- Request agenda changes prior to meeting
- Help us stay on schedule

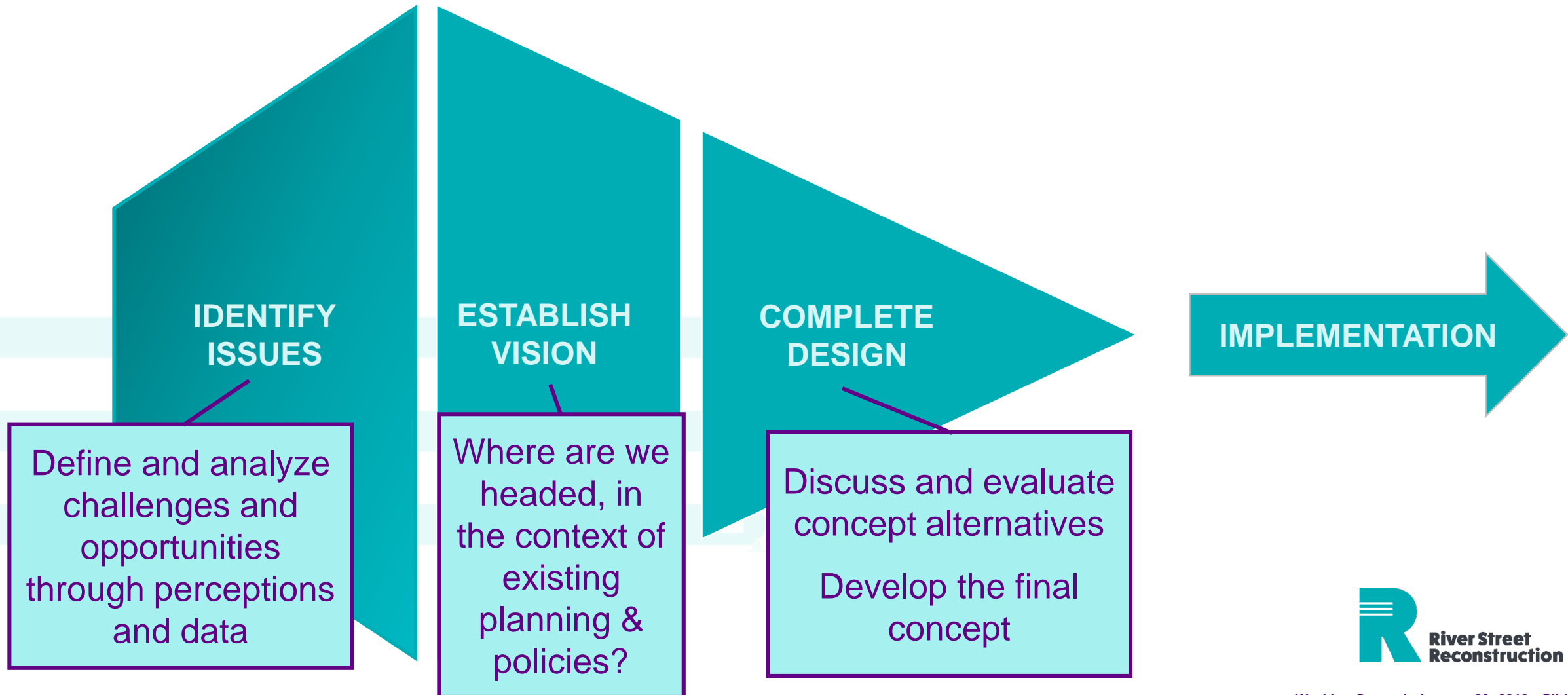
Any other good-meeting guidelines to add?

NOTE: Members of the public are welcome to listen and comment. To focus on facilitating the input of the working group, we will hold public comment to a set period and ask that they be related to the topics discussed.

Steps in the Design Process



Steps in the Design Process





City Policies and Past Planning

River Street is a.....

- Infrastructure spine *and*
- Regional roadway *and*
- Neighborhood street *and*
- Retail district *and*
- Place to be *and*
- Front yard.

Existing City Policies



Vehicle Trip Reduction Ordinance (1992) prioritizes alternatives to single-occupancy vehicle travel.

Toward A Sustainable Future

Cambridge Growth Policy

UPDATE 2007

Cambridge Growth Policy (1993/2007) emphasize walking, biking, transit, and low emission vehicles and establishes urban design and open space objectives.



Complete Streets (2016) emphasizes designing city streets for users of all ages, abilities, or modes of transportation.

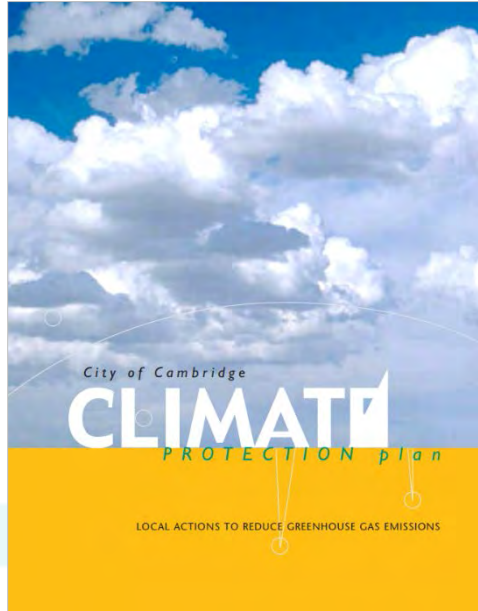


**VISION
ZERO**

CAMBRIDGE

Vision Zero (2016) eliminate traffic-related fatalities and serious injuries through prevention strategies.

Climate and Environment



2002
Climate



Ongoing
Climate Change Preparedness &
Resilience



Ongoing
Urban Forest
Master Plan

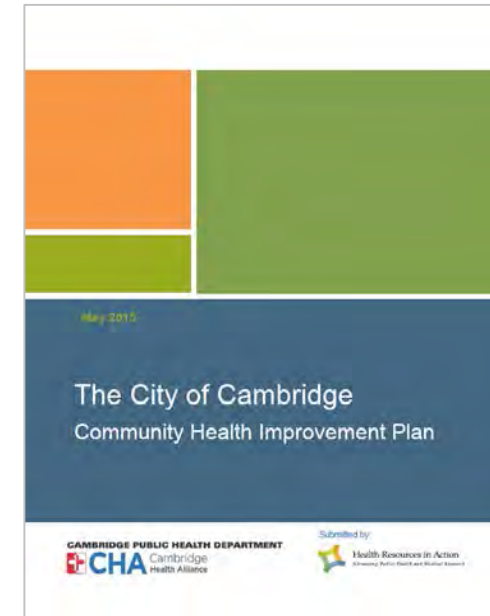
Open Space and Health



2000 and 2010
Open Space

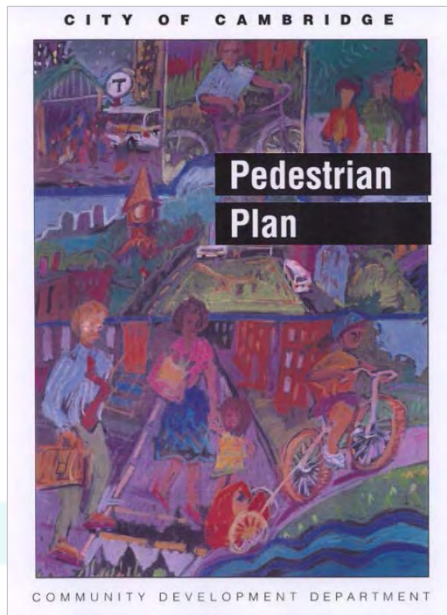


2014
Playing in the Public Realm



2015
Health

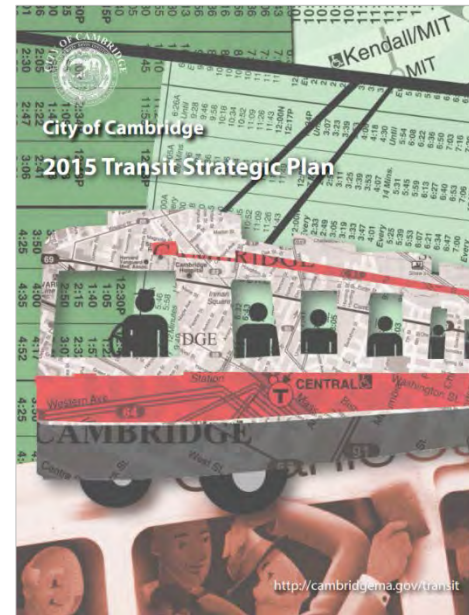
Transportation



2000
Walking



2015
Cycling



2015
Transit

COMING SOON

Future of
Mobility Plan

Infrastructure Reconstruction Plans



- Living documents
- Incorporate several city policies and plans



- River Street is one of many projects planned

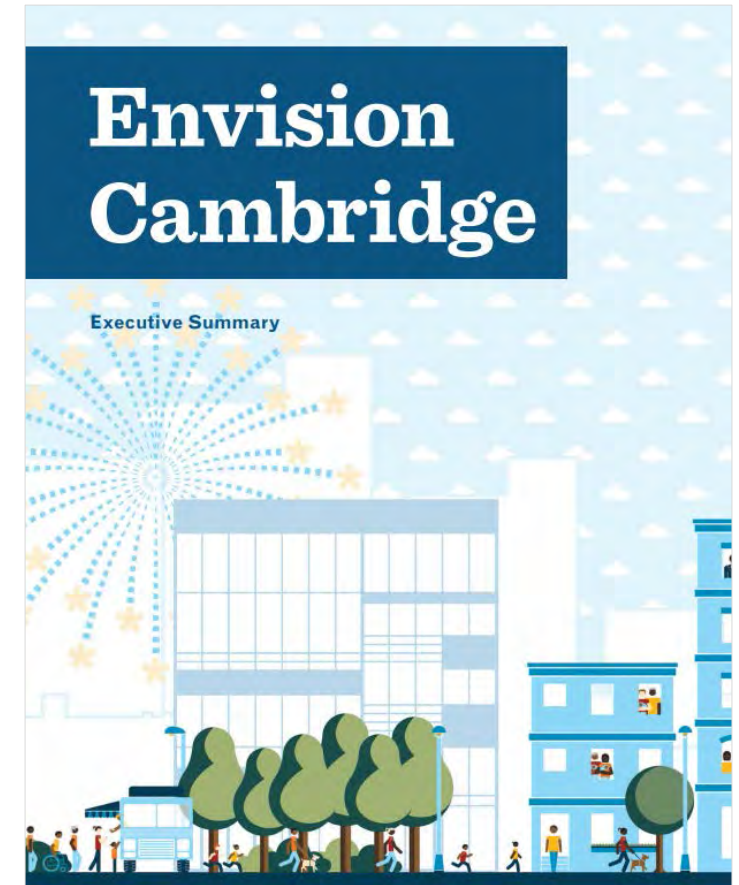
Other Ongoing Planning



MBTA: Better
Bus Project



MassDOT
I-90
Interchange



Envision
Cambridge

Sample Envision Cambridge Goals

CLIMATE AND ENVIRONMENT

- **Climate Change Preparedness:** Protect the lives and livelihoods of the Cambridge community from the impacts of climate change

COMMUNITY WELLBEING

- **Sense of Belonging:** Strengthen our social connections and provide a safe and welcoming community

URBAN FORM

- **Open Space:** Create a connected network of high-quality open spaces that links all residents to local and regional natural assets, provides a range of activities and experiences, is inclusive of all people, and encourages social connections

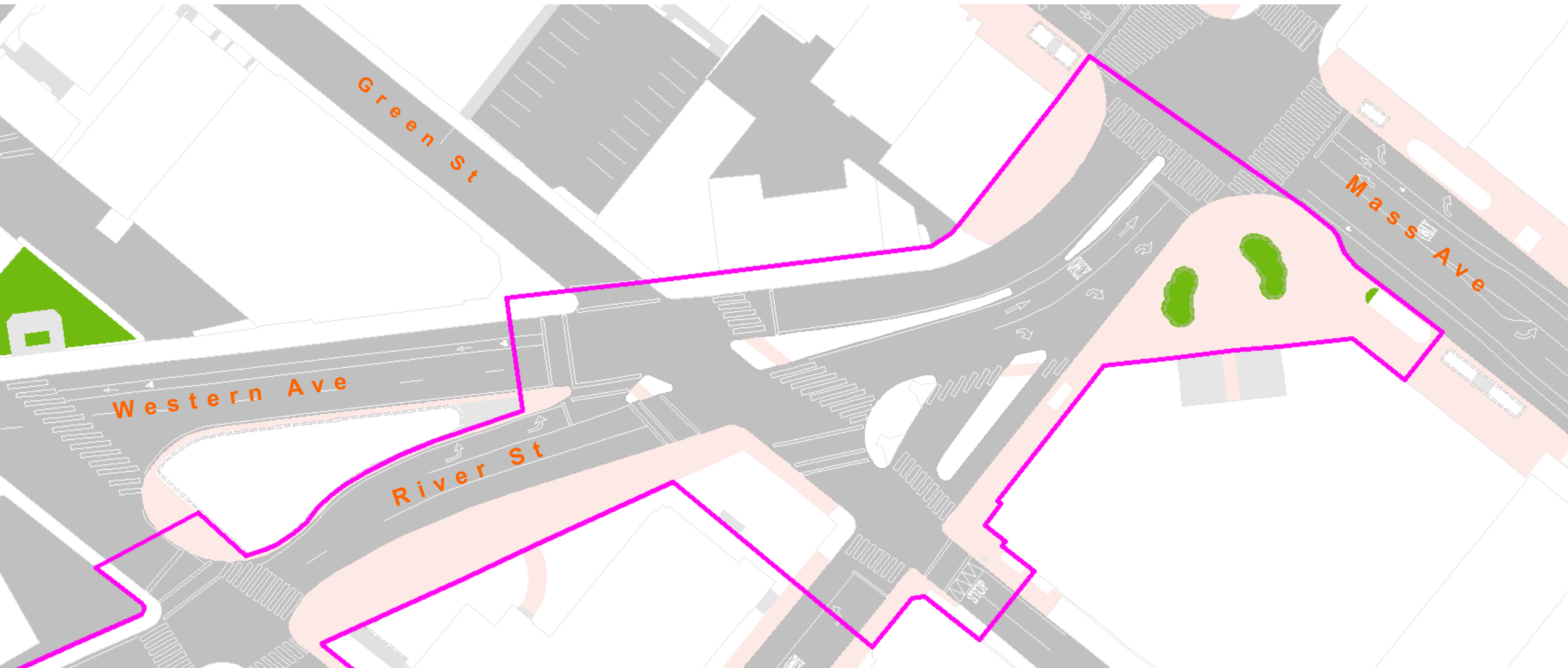
ECONOMIC DEVELOPMENT

- **Great Commercial Districts:** Preserve and enhance the distinctive character of Cambridge's commercial districts, especially its major squares and mixed use corridors

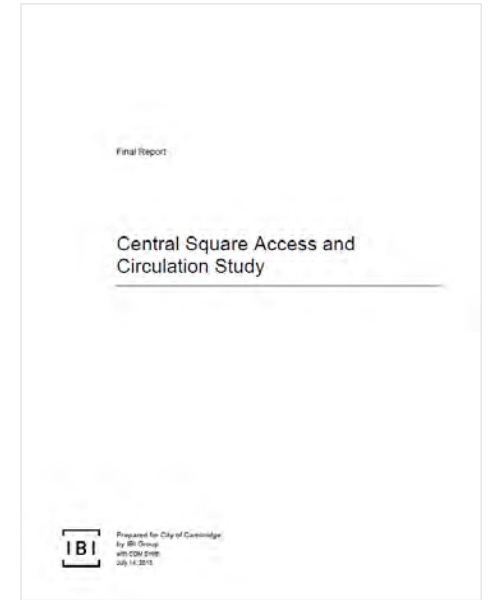
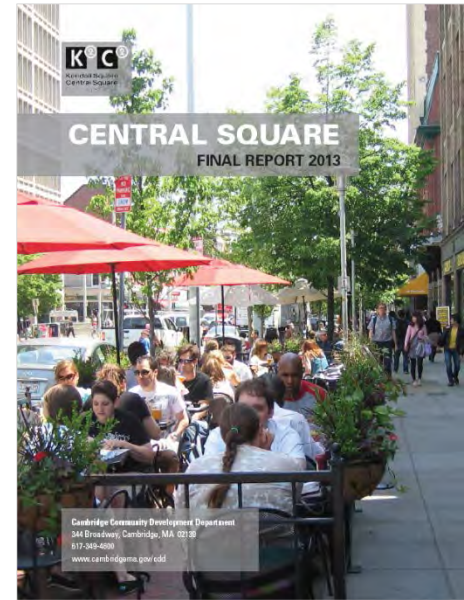
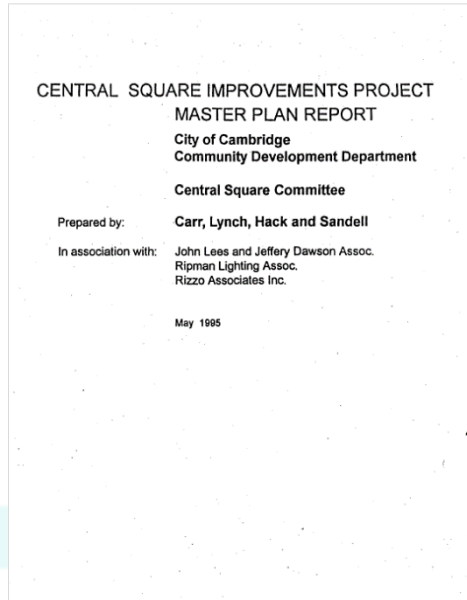
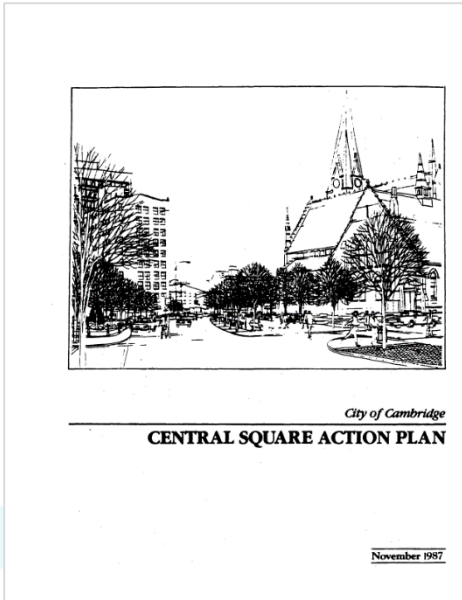
MOBILITY

- **Reliability and Efficiency:** Ensure people and goods can reliably move within Cambridge and around the region, and encourage space-efficient transportation choices like walking, biking, transit, and carpooling.
- **Safe and Active Transportation:** Eliminate traffic fatalities and serious injuries while encouraging active living and improving comfort for people of all ages and abilities

Carl Barron Plaza and MBTA Busway



Central Square Planning



1987

1995

2011

2013

2015

Central Square
Action Plan

Central Square
Master Plan
Report

Central, Squared
Red Ribbon
Commission

K2C2 Central
Square Report

Central Square
Access and
Circulation Study

Carl Barron Plaza Evolution



1920s



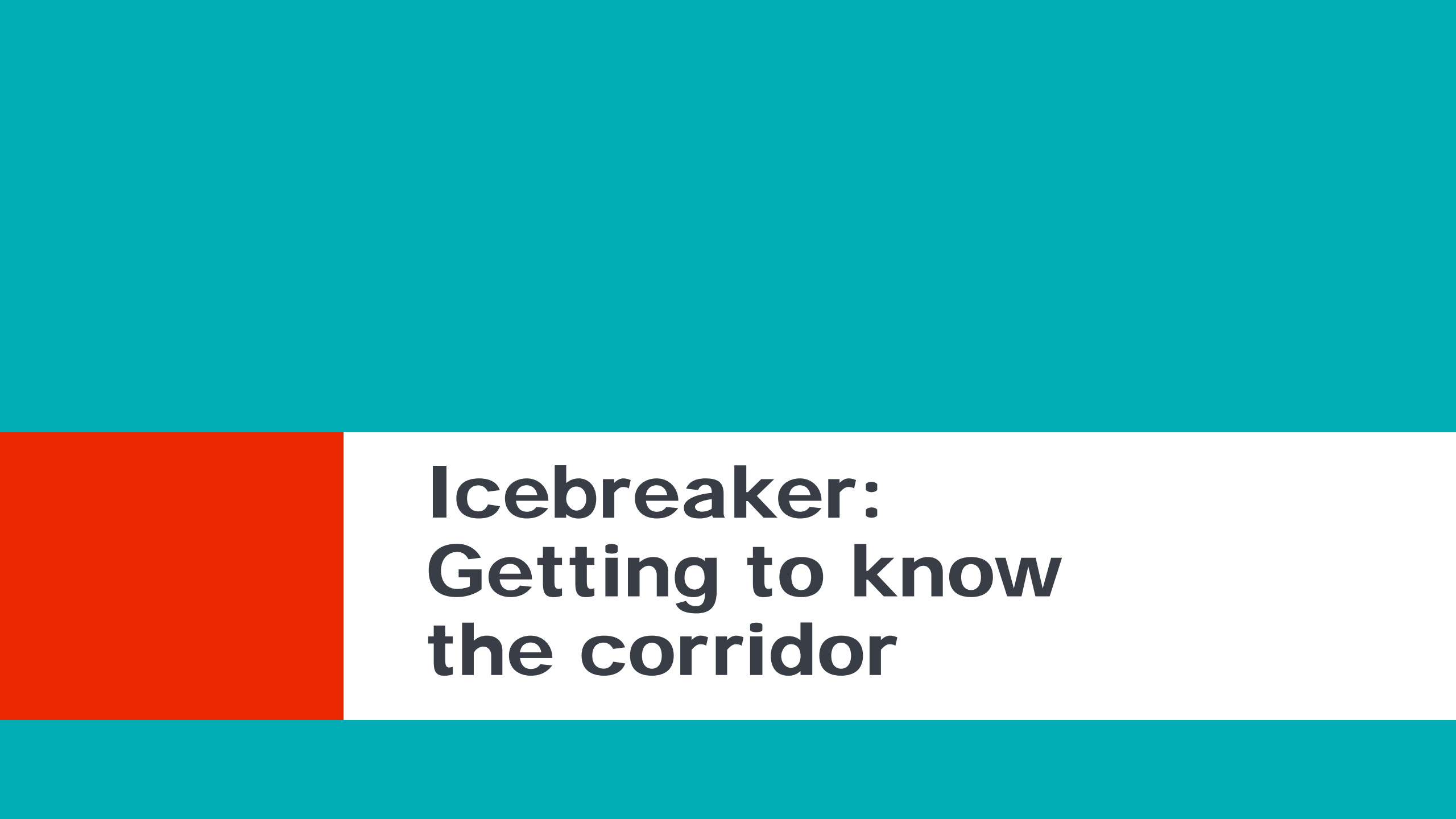
1970s



1990s



2010s



Icebreaker:
Getting to know
the corridor

Draw your issues & opportunities on the map!



Where else can we take the map?



Project Wikimap (Draft)

The screenshot displays the Project Wikimap interface for River Street Reconstruction. At the top left, a teal banner features a large white 'R' logo and the text 'River Street Reconstruction' and 'Where would you make improvements to River Street?'. To the right is a green banner with the text 'Click Add points to add to the map.' Below this is a purple navigation bar with 'About & Help' and 'Add Points' (with a location pin icon), and a 'Share 0' button. The main map area shows a street grid with various colored icons representing different improvement categories: Greenery (green leaf), Social Space (blue people icon), Commerce (yellow dollar sign), Mobility (orange double arrows), Access to Mobility (purple location pin), Safety (red checkmark), and Other (purple dots). A 'View Options' panel on the right includes checkboxes for 'Turn On/Off layers', 'Turn On/Off Other Peoples' Responses', and 'Access to Mobility'. A large red box with the text 'Coming Soon' is overlaid on the bottom right of the map.

Questions and
Comments?



Next Steps

Next Working Group Meeting

Tuesday, February 26

- A brief history of River Street
- Adapting goals to project context
- Existing conditions
- Preview of Carl Barron Plaza design charrette

Project Website

CAMBRIDGE
CDD@344

Community Development Calendar | Projects | Publications | Forms | Contact Us | cambridgema.gov

Text Size: A A A Enter keyword(s)

COMMUNITY DEVELOPMENT DEPARTMENT
344 Broadway

CLIMATE & ENERGY | ECONOMIC DEVELOPMENT | FACTS & MAPS | HOUSING | PARKS & PLAYGROUNDS | PLANNING & URBAN DESIGN | TRANSPORTATION | ZONING & DEVELOPMENT

CDD > Projects > River Street Infrastructure and Streetscape Design

River Street Infrastructure and Streetscape Design

The River Street Infrastructure and Streetscape Design Project will upgrade the sanitary sewer, stormwater and water subsurface infrastructure while developing a new surface design for River Street, the bus terminal area at River and Magazine Streets near Central Square, and Carl Barron Plaza. The project aims to create a streetscape design that meets the needs of all the various users and in a way that engages the local community, contributes to overall enhancement of the neighborhood, and meets the City's goals related to infrastructure, transportation, and urban design.

The concurrent design of Carl Barron Plaza, the significant open space at the heart of Central Square will include consideration of public art, fixed and/or unfixed furniture, access, plantings, and landscaping. The design must also consider the complexity of transportation needs related to the bus bays adjacent to the Plaza and people moving through the plaza.

The community outreach and design processes will occur throughout 2019 and into early 2020. Construction is anticipated to begin in Spring 2020.

To be included on the email list for this project, [sign up here](#).

The Latest | Schedule | Description | Community Process | Contact

December 2018

The City has appointed a working group to represent a cross-section of resident and business interests in the corridor, as well as representatives from relevant citizen advisory committees. Please click on the 'Community Process' tab for more details.

Quick Links

I'd like to learn more about...

Select a Topic

Neighborhood or Square

Select One

Current Projects...

Select One



Cambridgema.gov/riverstreet

A 5-STAR Community
and National Leader in

