



# Working Group # 11

**Thursday, May 6 2021**

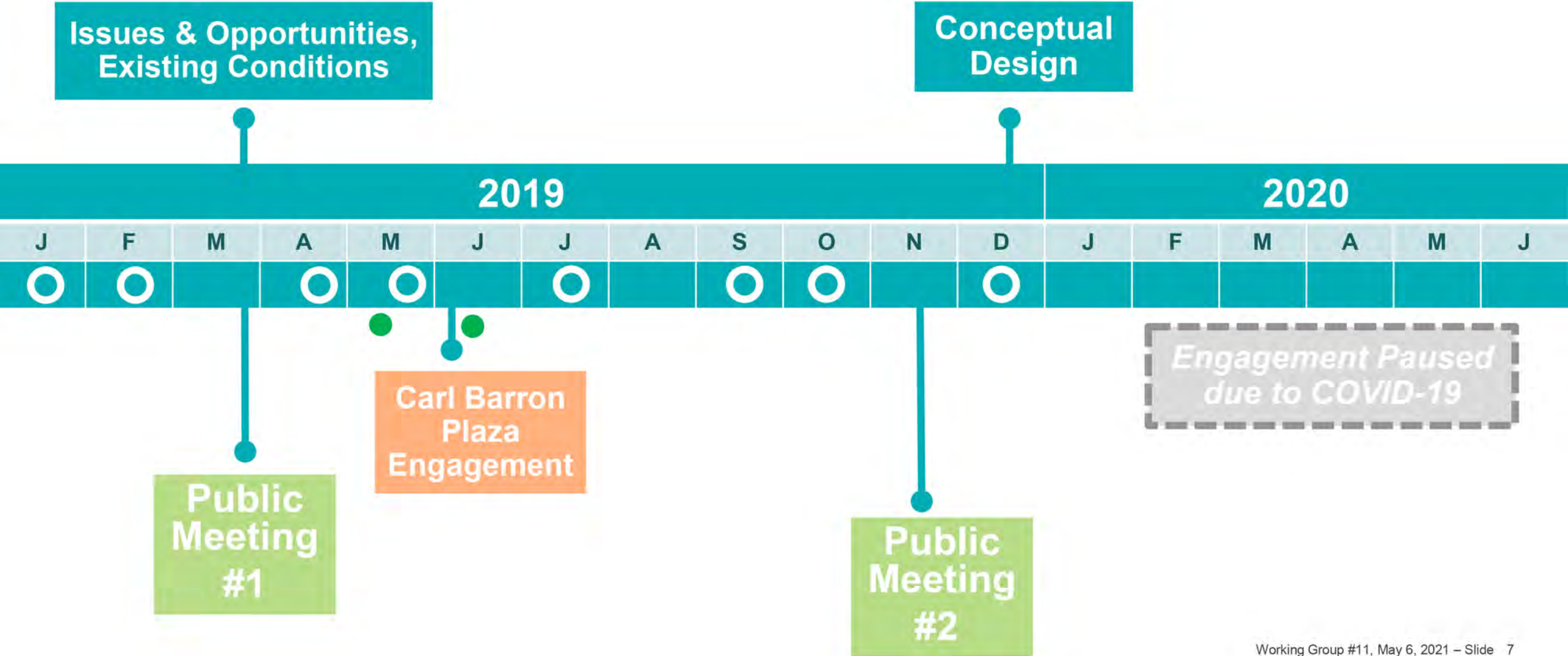
# Welcome and Overview

# Today's Agenda

- **Welcome and Overview** 5 minutes
- **Project Status and Schedule** 5 minutes
- **Corridor Design Feedback Recap | Key Themes** 10 minutes
- **Tubman Square Design** 15 minutes
- **Carl Barron Plaza Design** 30 minutes
- **Working Group Discussion** 15 minutes
- **Public Comment** 10 minutes
- **Next Steps** 5 minutes

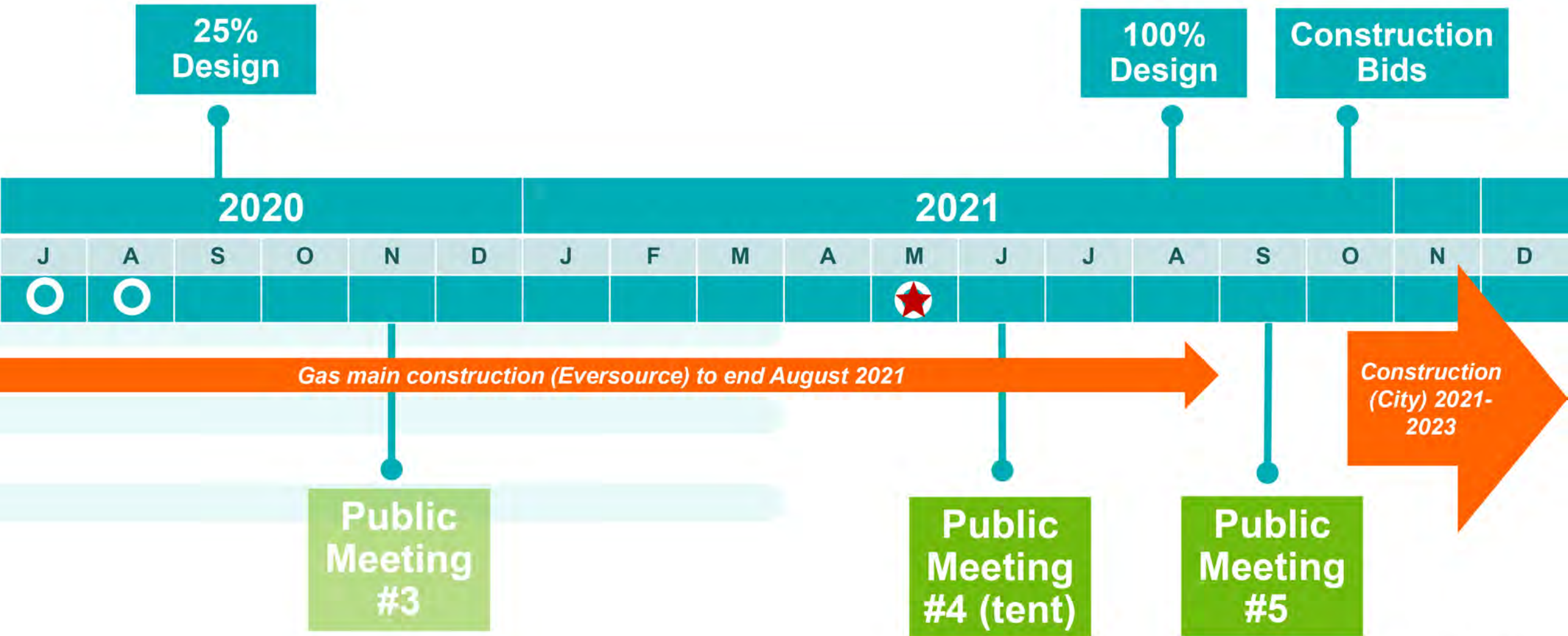
# Updated Expected Timeline

- Working Group
- Public Walks
- ★ Today



# Expected Timeline

-  Working Group
-  Public Walks
-  Today



# Upcoming Meetings

- **Public Meeting #4: June** (tentative)
  - Conceptual Design Plans for Carl Barron Plaza
  - Conceptual Tubman Square Design Update
- **Public Meeting #5: September**
  - Review of Final Corridor and Carl Barron Plaza Design

# Goals for Today's Meeting

- 1. Review key themes from virtual open house**
- 2. Provide update on corridor design refinements**
- 3. Review Tubman Square final design**
- 4. Present and discuss proposed design concepts for Carl Barron Plaza**

# Corridor Design Recap



# Virtual Open House

1,000+

Total Page views

~100

Total Comments

StoryMap Instructions

Watch later Share

## Welcome!

Welcome and thank you for participating in the City of Cambridge's River Street Reconstruction

Play (k) 0:04 / 2:54

### Navigating the Virtual Open House

We've created this interactive StoryMap site to share how we incorporated the shared community design goals to develop a new vision for the River Street Corridor and Carl Barron Plaza in Central Square.

Our goal is to provide you with the information you'd receive at an in person meeting, and to capture your thoughts on the proposed design for the River Street Corridor and Carl Barron Plaza.

The project information is split into the following sections:

- **Project Overview:** provides a summary of the project area, history and goals
- **Corridor Overview/Design:** provides a summary of the River Street corridor design from Memorial Drive to Auburn Street
- **Tubman Square:** provides a summary of potential design options for Norman Tubman Square at the intersection of River Street and...

# Virtual Open House

**Support for...**

**Separated Bike Lane**

**Improved Bus Stops**

**Creative Design**

**Dedicated Bus Lane**

**New Traffic Signals**

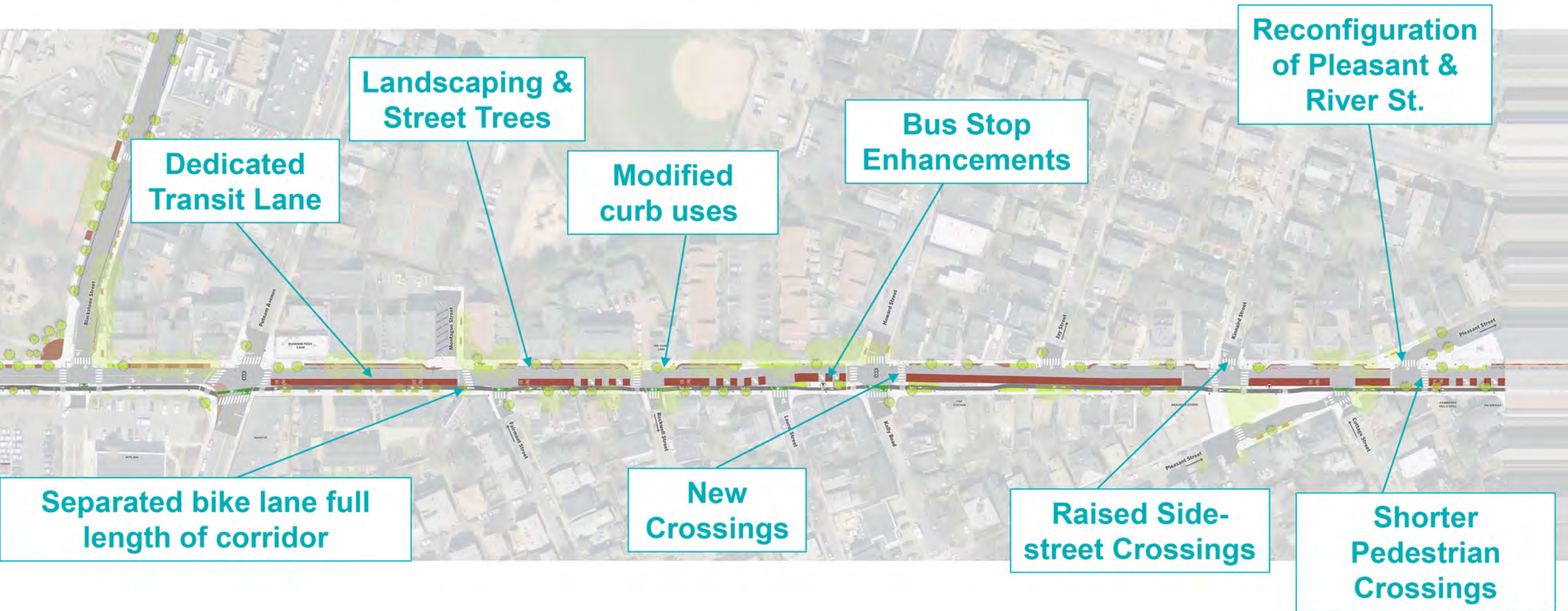
**New Crosswalks and Raised Crossings**

**Landscaping**

**Walkway through Tubman Square**

**Shorter Crossings**

# Key Themes & Locations



# Corridor Refinements Near Tubman Square

Rectangular Rapid-Flashing Beacon (RRFB)

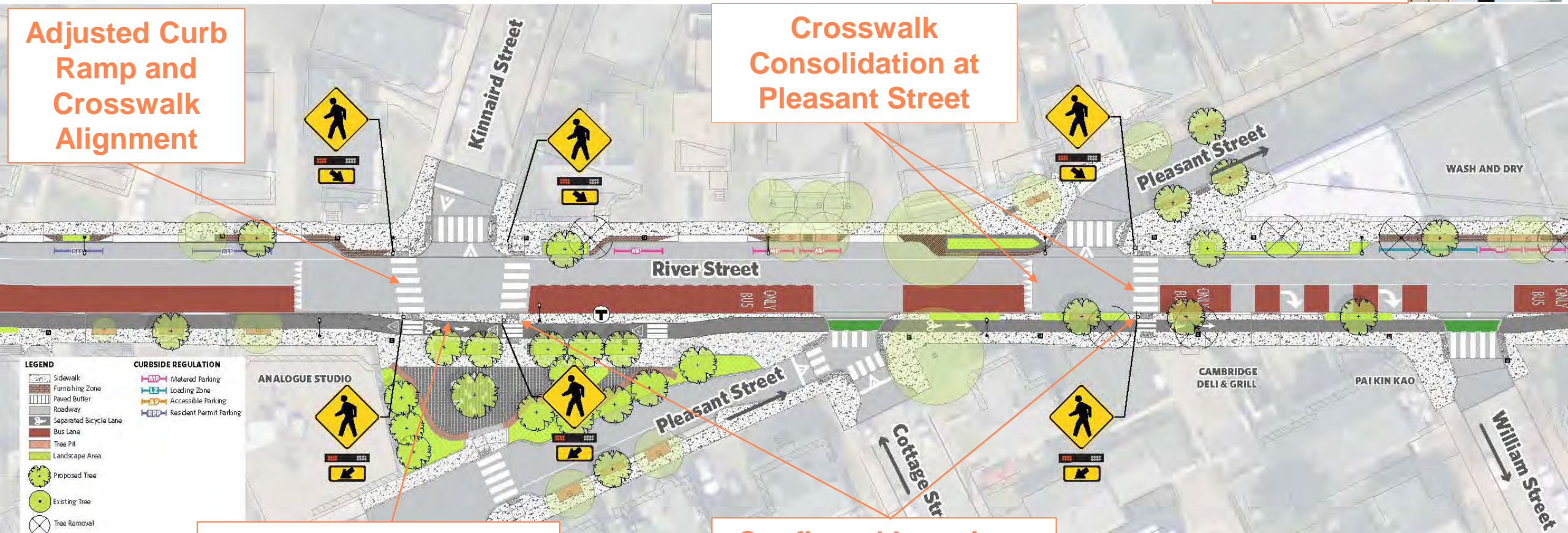


Adjusted Curb Ramp and Crosswalk Alignment

Crosswalk Consolidation at Pleasant Street

Adjusted Alignment of Bikeway at Entry into Tubman Square

Confirmed Locations of RRFB's Along the Corridor



- LEGEND**
- Sidewalk
  - Furnishing Zone
  - Paved Buffer
  - Roadway
  - Separated Bicycle Lane
  - Bus Lane
  - Tree Pit
  - Landscape Area
  - Proposed Tree
  - Existing Tree
  - Tree Removal
- CURBSIDE REGULATION**
- Metered Parking
  - Loading Zone
  - Accessible Parking
  - Resident Permit Parking

# Tubman Square Design

# Tubman Square Design Guidance

## Design Guidance

- Safe, separated bike lane
- Incorporate feature to unify elongated plaza
- Maximize planted area for enclosure/comfort
- Locate Ritsuko Tahoe art element and incorporate cherry trees
- Incorporate sculptural/playful elements



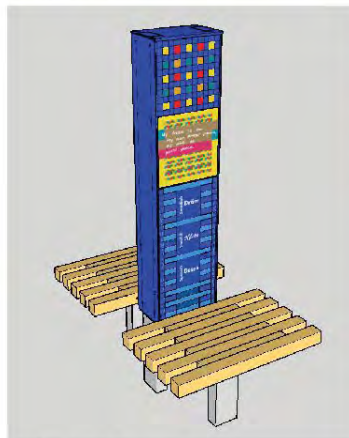
A sculptural bench with under lighting can serve to unify the elongated space while adding visual interest



A sculptural bench with under lighting can serve to unify the elongated space while adding visual interest



Sculptural/playful objects can captivate children while also serving as additional seating elements



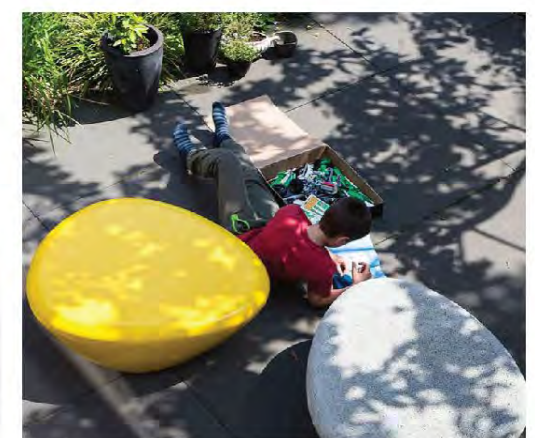
Ritsuko Tahoe art element



Lieut. Norman M Tubman monument



A sculptural bench with under lighting can serve to unify the elongated space while adding visual interest



Sculptural/playful objects can captivate children while also serving as additional seating elements

# Tubman Square Elements



# Tubman Square – Looking East





# Tubman Square – Looking East



# Tubman Square – Looking West



# Tubman Square – Looking West



# Tubman Square – Looking West



# Tubman Square – Looking West



# Questions?



# Carl Barron Plaza Design

# Shared Design Goals Review

<b>Inclusive</b>	Attract a wide range of users while preserving usability for the existing regulars
<b>Activated</b>	Create a vibrant space through everyday activities and special programming
<b>Safe</b>	Create a feeling of safety for everyone
<b>Flexible</b>	Allow for a wide range of uses and activities that can evolve over time
<b>Attractive</b>	Improve the perception of the space
<b>Comfortable</b>	Provide seating, lighting and amenities that promote short- and long-term lingering
<b>Multimodal</b>	Ensure pedestrian and bicyclist flow, and coordinate with transit users' needs
<b>Functional</b>	Provide materials and amenities that are functional and easily maintained
<b>All-Season</b>	Provide comfortable year-round use and reduce microclimate influence



# Design Givenes for all Options

- **Direct pedestrian routes** through and around plaza (8'-0" min.)
- Maximize **tree plantings** and green space
- Provide **flexible plaza areas** for a variety of activities
- **Transit Shelters** at all (3) transit stop areas
- **MBTA Operators' Booth** with visibility to all three bus stops and layover area
- **Bus boarding areas** (8'-0" min. clear zone)
- **Separated bicycle facility** (6'-6" min.)
- **Relocated Carl Barron Memorial** within the plaza



# Urban Design Guidance

**Developed Through Meetings with City's Internal Urban Design Team, Central Sq. BID & Stakeholders Over the Past Six Months:**

- Establish Carl Barron as a Focal Point
- Be Bold, Creative, Playful and Whimsical
- Provide enough height to be visible from a distance, but also a pedestrian scale
- Use repetition to strengthen the visual unity of the plaza
- Build in capacity for placemaking, functionality and programming where possible
- Apply lighting effects and color to enhance vibrancy



# Site Analysis & Constraints

- **Underground Utilities/Subway**
  - Major public and private utilities
  - Shallow utilities (electric, comms)
  - Sewer lines
  - Red Line Subway - Mass Ave.
  - Sanitary and drainage Lines
- **Eight (8) Existing Trees**
- **Relocate/Re-envision Art**
- **Solar Orientation**
  - Green St. edge: Sunny
  - Mass Ave: Shady



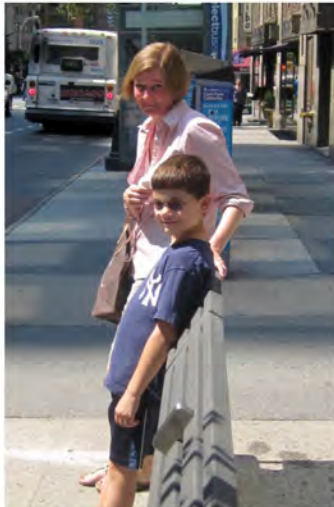
# Precedents



Repetitive, sculptural lighting and under lighting can serve as a ribbon of continuity throughout the space. Platform seating offers placemaking/performance opportunities.

Incorporating wood on metal or stone adds warmth and is a durable solution to longevity

Sculptural structure/installation could serve as a focal feature, unifying the Plaza. Ideally the forms are visually connected to the MBTA bus shelters.



Sculptural seating, in addition to flexible seating, will activate the space and make it more inviting.

Lean rails can be introduced at primary desire lines to separate bike and pedestrian circulation.

Provide spatial definition and shaded gathering opportunities with a pergola structure.

# Circulation



# Two Refined Options



**Option A: Sculptural Ribbon**



**Option B: Complementary Structures**



**Option A: Sculptural Ribbon**



**Option B: Complementary Structures**

# Option A: Sculptural Ribbon



# Option A: Sculptural Ribbon



A bold, sculptural feature serves as a ribbon of continuity throughout the space.

Introduce platform seating for placemaking/performance opportunities. Use under-lighting to enhance continuity within space.



# Option A: Sculptural Ribbon



A bold, sculptural ribbon draws visitors into the plaza.

Simple bus shelters frame the gateway.

# Option A: Sculptural Ribbon



A bold, sculptural feature serves as a ribbon of continuity throughout the space.

Lean rails separate bike and pedestrian circulation at primary desire lines.

# Option A: Sculptural Ribbon



Introduce platform seating for placemaking/performance opportunities.

# Option A: Sculptural Ribbon



“Ribbon of continuity” sculpture extends into primary plaza space adding color and whimsy

A combination of flexible and fixed seating offer numerous gathering opportunities and can accommodate larger programmed events.

# Option A: Sculptural Ribbon



Perforated metal with backlighting has been introduced to accentuate the ribbon structure. Underlighting touch down points provides the illusion the sculpture is floating.

# Option A: Sculptural Ribbon



Perforated metal with backlighting has been introduced to accentuate the ribbon structure. Underlighting touch down points provides the illusion the sculpture is floating.

# Option B: Complementary Structures



# Option B: Complementary Structures



A pergola and matching bus shelters anchor both ends of the plaza.

Repetitive light columns and lean rails serve as a ribbon of continuity throughout the site.



# Option B: Complementary Structures



Repetitive light columns, and lean rails serve as a ribbon of continuity throughout the site.

Bus shelters are designed in a similar vocabulary to a proposed pergola structure at the Mass Ave end.

# Option B: Complementary Structures



Repetitive light columns, and lean rails serve as a ribbon of continuity throughout the site.

Bus shelters are designed in a similar vocabulary to a proposed pergola structure at the Mass Ave end.

# Option B: Complementary Structures



A pergola structure provides a shaded respite on the plaza.

Introduce platform seating for performance opportunities.

# Option B: Complementary Structures



“Ribbon on continuity” light columns extend into primary plaza space and pergola structure

A combination of flexible and fixed seating offer numerous gathering opportunities and can accommodate larger programmed events.

# Option B: Complementary Structures



Light columns, bench and lean rail under lighting unify the design while emphasizing primary circulation routes.

# Option B: Complementary Structures



A combination of light columns and lighting integral with the pergola structure, will activate the plaza in the evening hours.

# Option B: Complementary Structures



Potential location for the Carl Barron Plaque, neighborhood information or sculptural art piece

# Two Refined Options

## Design Opportunities

- Introduce a robust tree canopy
- Incorporate repetitive lighting and/or sculptural elements to unify the design
- A richly textured ground plain will enhance plaza unification
- A combination of fixed and flexible furnishings for seating options and event programming
- Simple, elegantly designed bus shelters will complement the overall plaza design



**Option A: Sculptural Ribbon**



**Option B: Complementary Structures**



# Working Group Discussion

# Check in Questions

- How do these design options reflect the character of Central Square?
- What do you think of when you see these designs?
- Do these designs unify and connect both ends of plaza?
- Do these designs build in capacity for placemaking and programming?
- Do these designs meet the needs of plaza users?

# Public Comment

# Next Steps

# Upcoming Meetings

- **Public Meeting #4: June (tentative)**
  - Conceptual Design Plans for Carl Barron Plaza
  - Conceptual Tubman Square Design Update
- **Public Meeting #5: September**
  - Review of Final Corridor and Carl Barron Plaza Design

# Cambridgema.gov/RiverStreet



[Community Development Calendar](#) [Projects](#) [Publications](#) [Forms](#) [Contact Us](#) [cambridgema.gov](#)

Text Size: [A](#) [A](#) [A](#)

Enter keyword(s)

COMMUNITY DEVELOPMENT DEPARTMENT  
344 Broadway

CLIMATE  
& ENERGY

ECONOMIC  
DEVELOPMENT

FACTS  
& MAPS

HOUSING

PARKS &  
PLAYGROUNDS

PLANNING &  
URBAN DESIGN

TRANSPORTATION

ZONING &  
DEVELOPMENT

[CDD](#) > [Projects](#) > [River Street Reconstruction](#)

## River Street Reconstruction

Take our [survey](#) and tell us how River Street works for you today!

The River Street Reconstruction project will upgrade the sanitary sewer, stormwater and water subsurface infrastructure while developing a new surface design for River Street, the bus terminal area at River and Magazine Streets near Central Square, and Carl Barron Plaza. The project aims to create a streetscape design that meets the needs of all the various users and in a way that engages the local community, contributes to overall enhancement of the neighborhood, and meets the City's goals related to infrastructure, transportation, and urban design.

The concurrent design of Carl Barron Plaza, the significant open space at the heart of Central Square will include consideration of public art, fixed and/or unfixed furniture, access, plantings, and landscaping. The design must also consider the complexity of transportation needs related to the bus bays adjacent to the Plaza and people moving through the plaza.

The community outreach and design processes will occur throughout 2019 and into early 2020. Construction is anticipated to begin in Spring 2020.

[Click here to sign up for email updates on this project.](#)

[Click here to provide general comments and feedback.](#)

The **Public Input Map** is now closed, but you can still access it through the link to see what input was provided on issues and opportunities along River Street and in Carl Barron Plaza. Soon we will be posting a survey to understand how you use River Street today so that we can use that input in the design and also compare to a similar survey after the construction is complete.

### Quick Links

I'd like to learn more about...

Select a Topic

Neighborhood or Square

Select One

Current Projects...

Select One



[Click the Map to  
Explore Cambridge](#)

**A 5-STAR Community  
and National Leader in  
Sustainability**



[The Latest](#) [Schedule](#) [Description](#) [Community Process](#) [Documents](#) [Carl Barron Plaza](#)  
[Contact](#)

September 2019

THANK YOU!

[riverstreet@cambridgema.gov](mailto:riverstreet@cambridgema.gov)