



# CAMBRIDGE HISTORICAL COMMISSION

831 Massachusetts Avenue, 2<sup>nd</sup> Fl., Cambridge, Massachusetts 02139  
Telephone: 617 349 4683 TTY: 617 349 6112  
E-mail: histcomm@cambridgema.gov URL: www.cambridgema.gov/Historic

RECEIVED  
SEP 10 2021  
CAMBRIDGE HISTORICAL  
COMMISSION

## APPLICATION FOR CERTIFICATE

1. The undersigned hereby applies to the Cambridge Historical Commission for a Certificate of (check one box):  Appropriateness,  Nonapplicability, or  Hardship, in accordance with Chapter 40C of the Massachusetts General Laws and/or Chapter 2.78 of the Municipal Code.

2. Address of property:  , Cambridge, Massachusetts

3. Describe the proposed alteration(s), construction or demolition in the space provided below:  
(An additional page can be attached, if necessary).

I certify that the information contained herein is true and accurate to the best of my knowledge and belief. The undersigned also attests that he/she has read the statements printed on the reverse.

Name of Property Owner of Record:	<input type="text" value="Ledgemoor, LLC"/>		
Mailing Address:	<input type="text" value="50 Church Street P.O. Box 380212 Cambridge, MA 02238"/>		
Telephone/Fax:	<input type="text" value="617 354-0835"/>	E-mail:	<input type="text" value="pcunningham@trinityproperty.com"/>
Signature of Property Owner of Record:			
(Required field; application will not be considered complete without property owner's signature)			
Name of proponent, if not record owner:	<input type="text"/>		
Mailing Address:	<input type="text"/>		
Telephone/Fax:	<input type="text"/>	E-mail:	<input type="text"/>

<b>(for office use only):</b>			
Date Application Received:	<input type="text" value="9/10/21"/>	Case Number:	<input type="text" value="4671"/>
		Hearing Date:	<input type="text" value="10/7/21"/>
Type of Certificate Issued:	<input type="text"/>		Date Issued: <input type="text"/>

### **Instructions for Completing this Application:**

An application must be filed with the Cambridge Historical Commission (CHC) before work begins. Twelve (12) copies of the application should be attached to twelve (12) copies of supplementary material such as sketches, scale drawings, site plans, specifications, or photographs sufficient to enable the CHC to understand the details of the work proposed and to make a determination on the application. Plans no larger than 11" x 17" are preferred. Please submit reduced copies of plans if originals are of a larger dimension. Do not use spiral bindings, plastic covers, or heavy stock (these will be removed prior to mailing). Double sided copies are encouraged to save paper and postage. See our website or call for a list of meeting dates and deadlines.

The CHC staff welcomes advance inquiries for interpretations or advice. Please call 617/349-4683.

An application is considered incomplete without accompanying plans and drawings. The CHC reserves the right to determine an application incomplete at the time of hearing the application if it determines that the plans, drawings and other information submitted are not sufficient to enable it to determine whether to grant or deny a certificate.

Owners are urged to appear before the CHC in person or to designate an agent to act for them. The CHC will deem the agent to be authorized by the owner to make decisions regarding the extension or waiver of the period within which the CHC is otherwise required to make a determination on the application. All meetings are open to the public.

---

### **Administration of Historic Districts, Landmarks, and Protected Properties:**

The administration of historic districts and landmarks is guided by the provisions of Ch. 40C of the Mass. General Laws and by Ch. 2.78 of the Code of the City Of Cambridge. Other properties may also be subject to CHC jurisdiction including properties with conditional variances and properties governed by individual preservation restrictions.

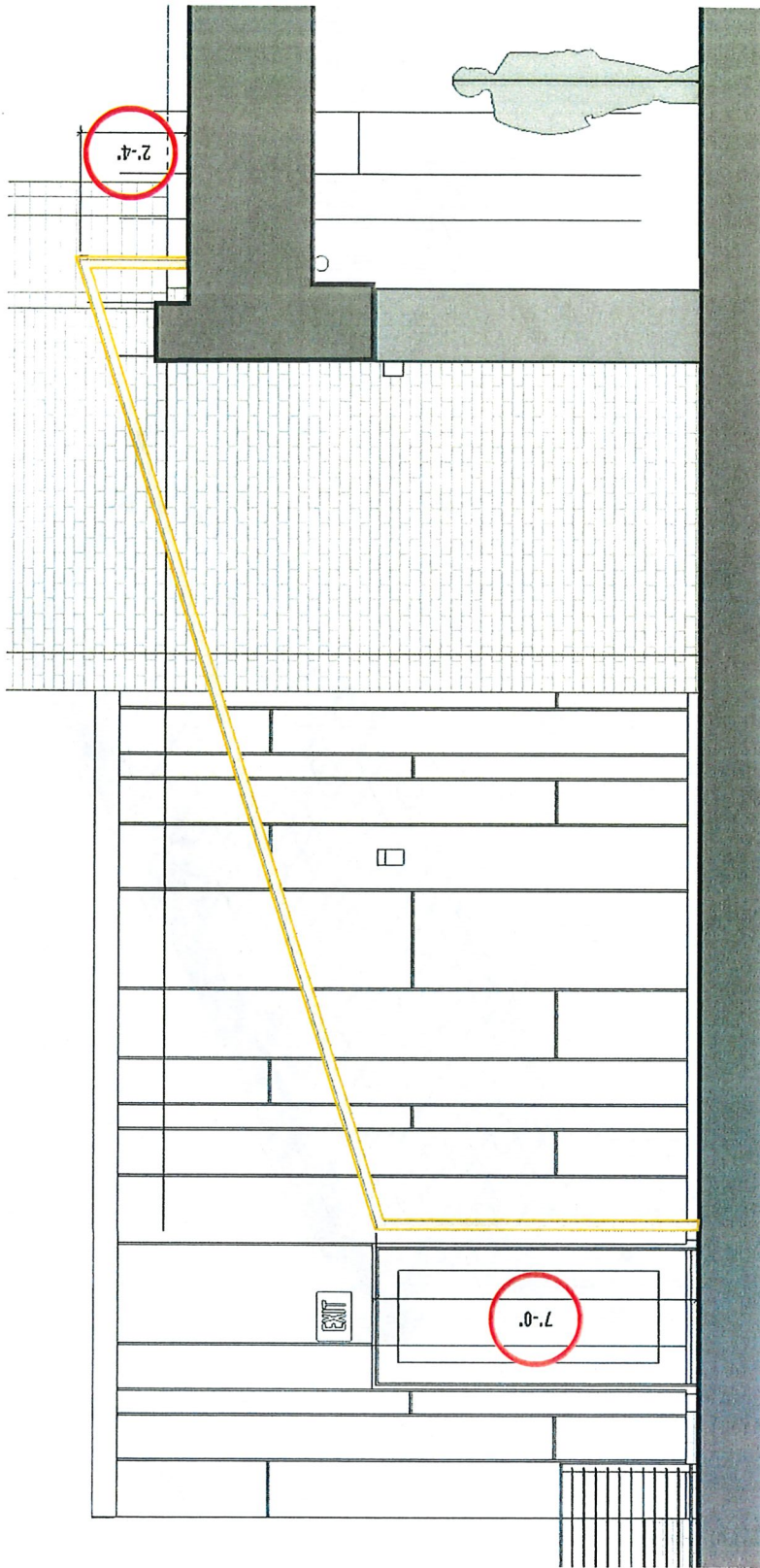
Any new construction, alteration of exterior architectural features, or demolition within a historic district or on the premises of a protected property or a designated landmark must be reviewed by the CHC. No building permit for such work on a protected property, designated landmark, or property within a historic district may be issued by the Inspectional Services Department until a certificate has been issued. The CHC must approve the alteration or construction of all structures, including signs, fences, walls, terraces, walks, driveways, light fixtures and the like, which are "open to view from a public street, public way, public park or public body of water," whether or not a building permit is required, and must approve changes in exterior color for properties within a historic district or as otherwise agreed.

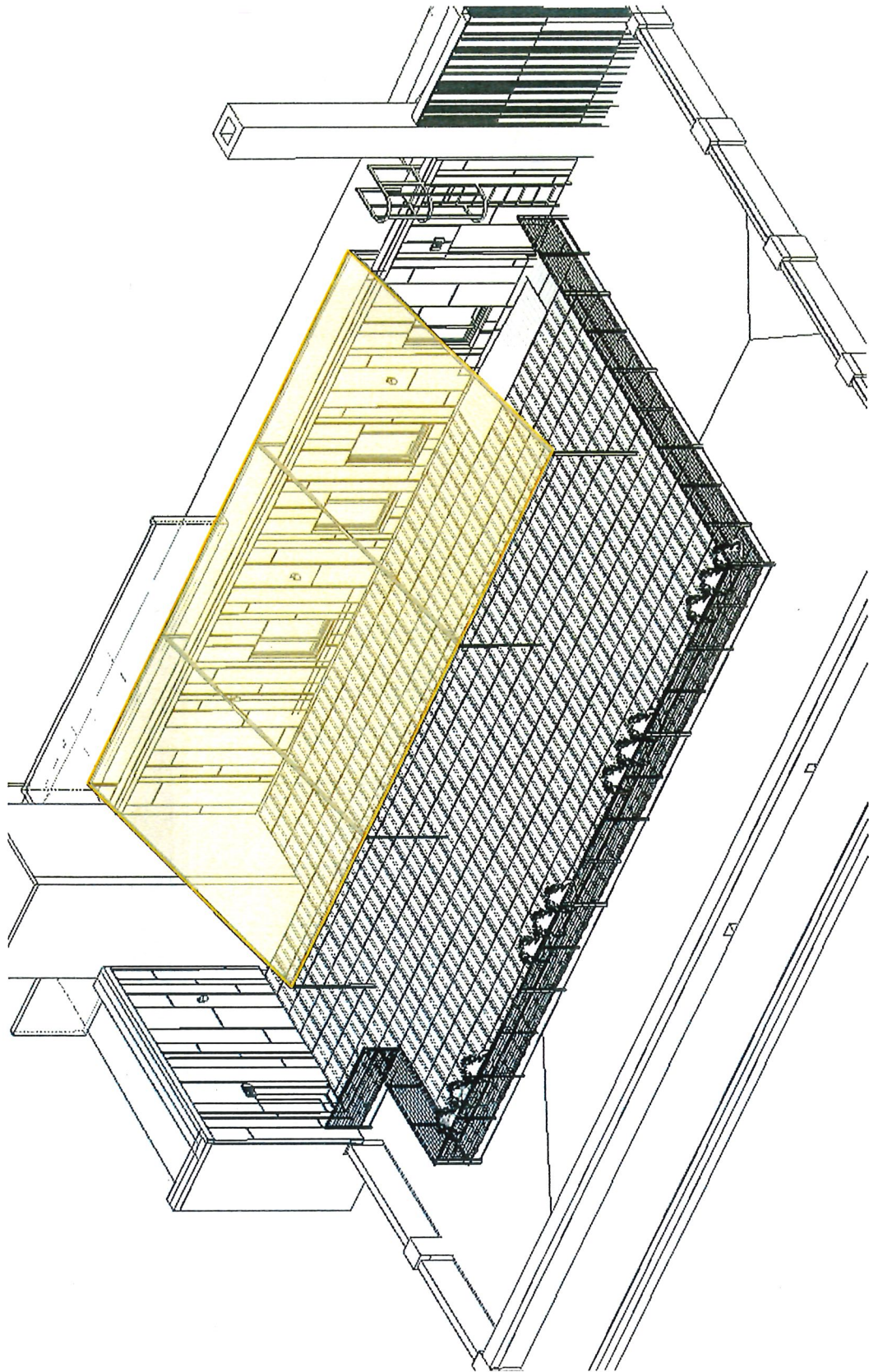
Prior to each hearing, the CHC staff will take slides or digital photographs of the subject property in daylight with ordinary camera equipment for the purpose of documenting the publicly visible conditions of buildings and exterior architectural features for the CHC and the public to view at the hearing. More information can be provided on request.

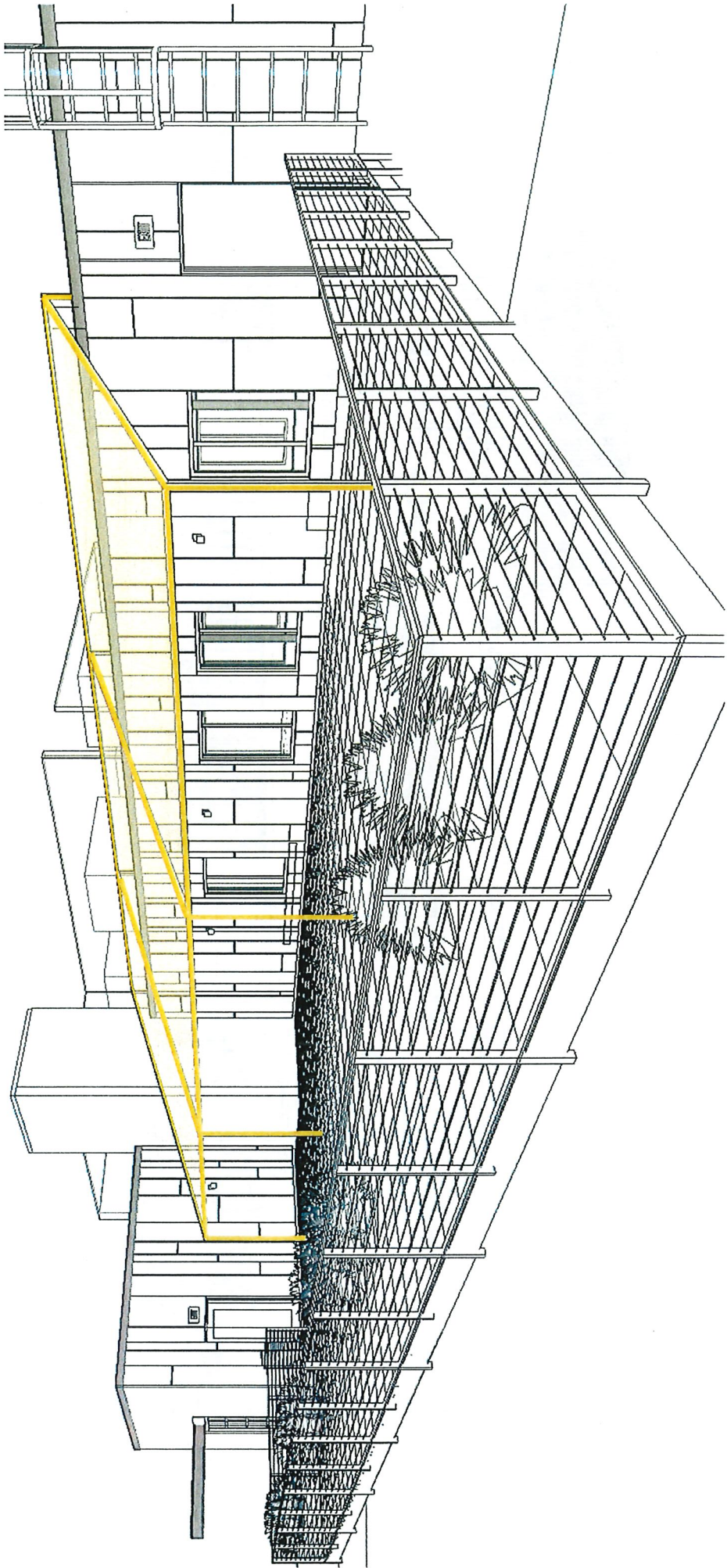
The CHC issues three types of certificates. A Certificate of Appropriateness will be issued when the CHC has determined that the construction or alteration will be appropriate for or compatible with the preservation or protection of the historic district, designated landmark, or other protected property. A Certificate of Nonapplicability may be issued when an application does not involve an exterior feature, or when the exterior feature is not then subject to CHC review. A Certificate of Hardship may be issued when failure to approve an otherwise inappropriate project would involve substantial hardship to the applicant and the CHC determines that the project can be accomplished without substantial detriment to the purposes of the district, preservation restriction, or landmark designation.

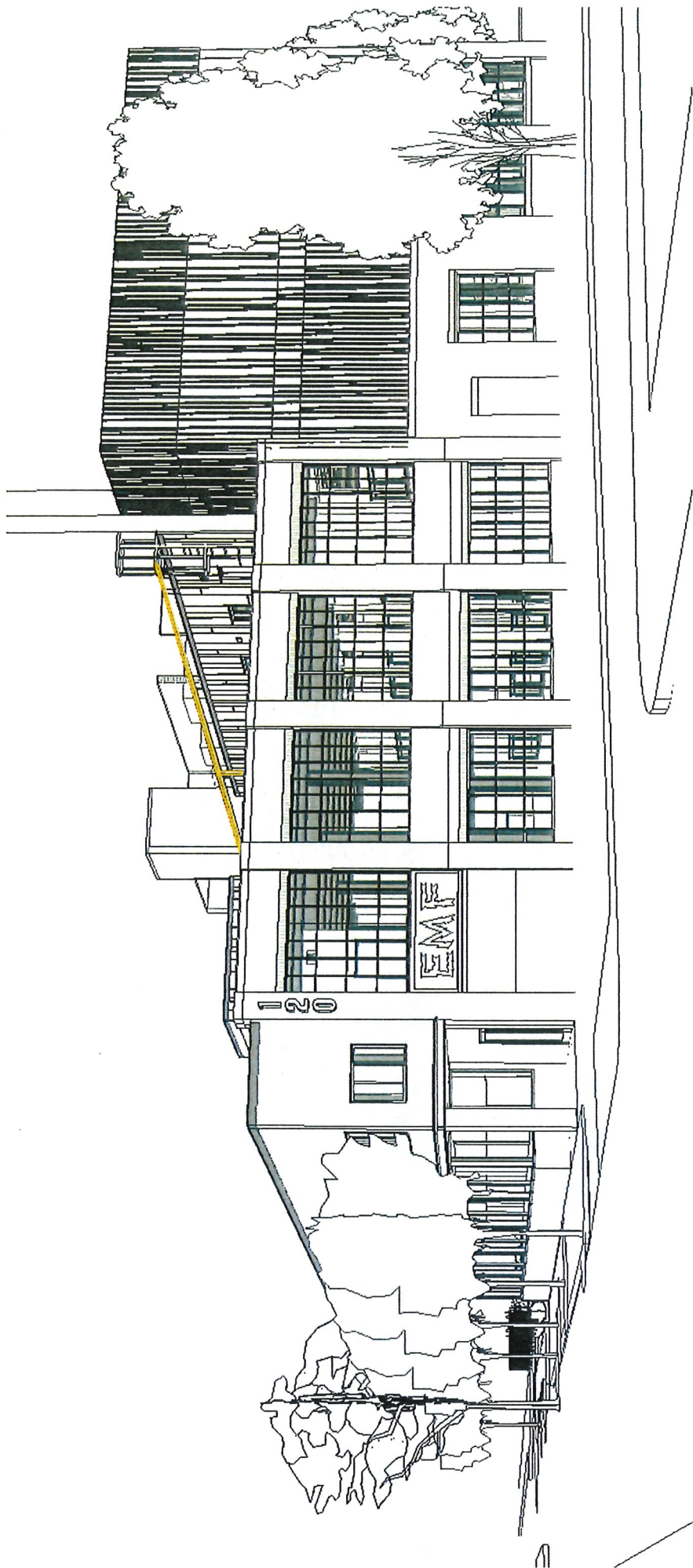
The CHC considers each application on its own merits, and does not apply specific architectural guidelines. Landscaping with plant materials is not subject to CHC review unless it is planned in conjunction with alterations or new construction. The CHC must approve projects that are not incongruous with the historic aspects or the architectural characteristics of the protected property, landmark, or historic district.

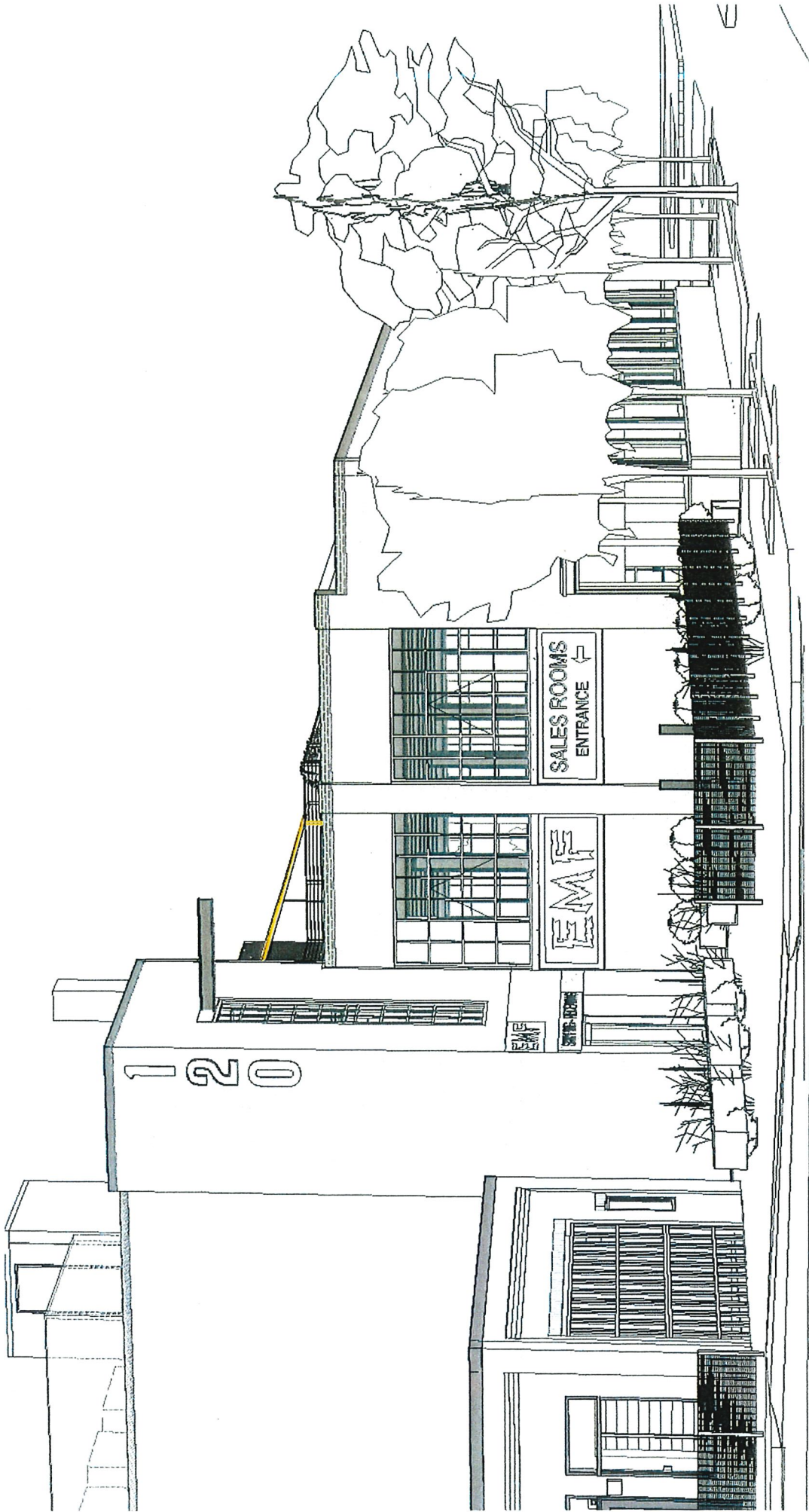
**Print Form**















### Awning Dimensions:

- Width 54'
- Length 20'
- Height at top 14' (heights taken from roof deck)
- Height at bottom 7' (heights taken from roof deck)



# The Sunplus™

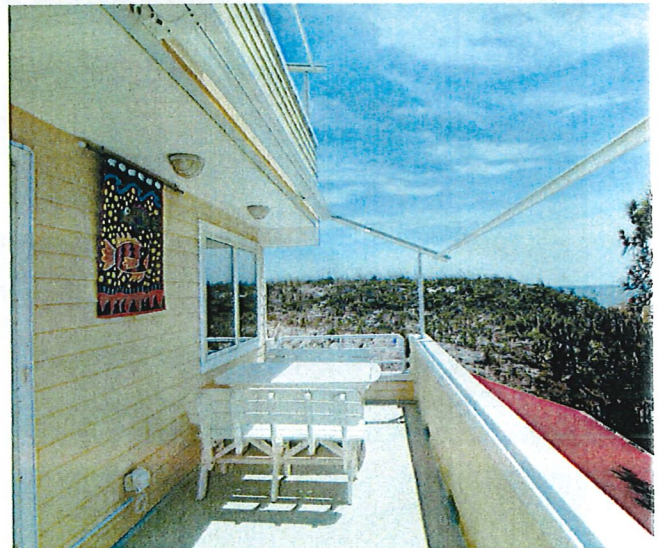
Retractable Shelter with Rain Gutters\*



**Sunesta®**  
AWNINGS & OUTDOOR COMFORT

## The Sunplus™ Retractable Shelter

This versatile retractable system offers basic sun protection up to complete rain and inclement weather protection. Systems can be standalone or mounted atop an existing structure such as a pergola, skylight or sunroom. With single unit projection widths up to 18 by 23 feet and the ability to join multiple units, the coverage is only limited to your space. The Sunplus offers a choice of hundreds of fabrics ranging from acrylic to decorative solar screen and waterproof fabrics. Like all Sunesta® retractable systems, Sunplus™ is custom made to fit your needs.





# The Sunplus™

Retractable Shelter with Rain Gutters\*



## For Open Areas or Existing Structures

The Sunplus provides shade and adds rain protection by way of built in gutters and the ability to be applied to open areas.





# The Sunplus™

Retractable Shelter with Rain Gutters\*

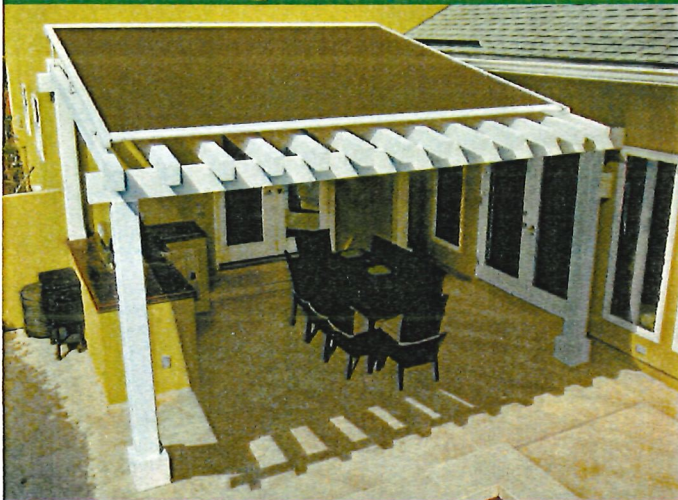


## For Open Areas or Existing Structures

The versatile Sunplus can project up to 23'. Multiple units can be joined together to create your ultimate outdoor oasis.

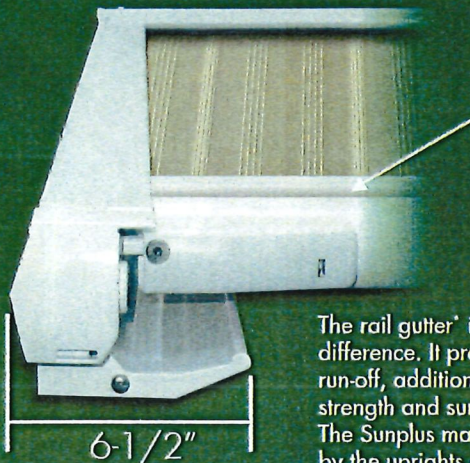


# The Sunplus™ Retractable Shelter with Rain Gutters\*



## General Information

Custom sizes up to 18'W x 23'P



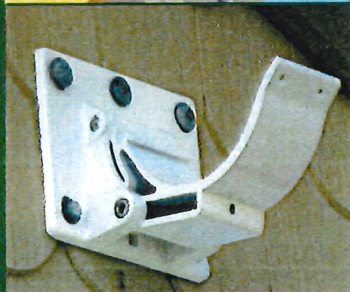
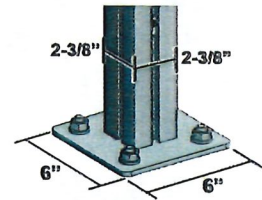
Front Bar Gutter

The rail gutter\* is the Sunplus™ difference. It provides rain run-off, additional mounting strength and sun protection. The Sunplus may be supported by the uprights at the front end only.

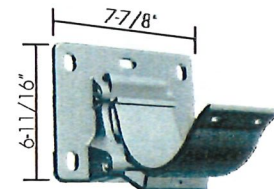
## Mounting Options



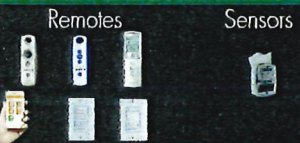
Upright Mounts available in 9'9" foot height & 19'6" foot height



Wall Mount



## Standard Features



wireless remote controls and auto sun & rain sensor



MODEL NO. 128035  
THE SUNPLUS  
164032-001  
WWW.SUNESTA.COM

unique product ID number



### Product Warranties

**5** YEARS FRAME **Up To 10** YEARS FABRIC **5** YEARS MOTOR



Frame Colors  
Armorcoated\* frame in white or brown.



Shade Fabric Styles

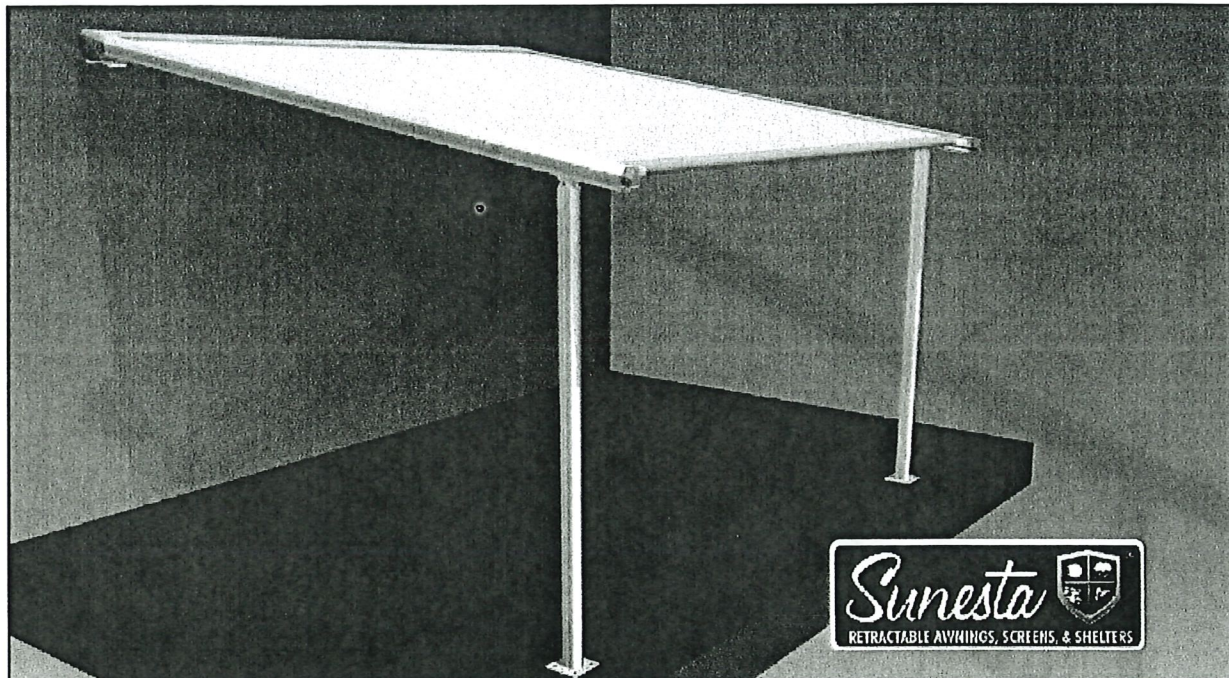


**Sunesta®**  
AWNINGS & OUTDOOR COMFORT

\* A minimum 15 degree pitch is required for unit to properly shed rain water when extended.

# The Sunplus Shelter

## Specification Sheet



The Sunplus Retractable Shelter to be used as a free standing shading and weather protection of residential and commercial patios, decks, outdoor seating areas, terraces, common areas, break areas, and smoking areas. Mounting to the wall is made by means of adjustable wall brackets. Ceiling mounting brackets are also available.

### FRAME

**Cassette:** Two piece extruded aluminum cassette. Wall thickness 1/16". Cassette 6-1/16" x 9-1/4"  
**Cassette End Caps:** Constructed of die-cast zinc, with connection tabs as connectors to the guiding rail  
**Fabric tube:** Constructed of galvanized steel,  $\varnothing$  85 mm with groove for the attachment of the fabric, mounted maintenance-free to the lateral parts  
**Front bar:** One piece extruded aluminum profile 3-9/16" x 1-9/16", wall thickness 1/8". End caps constructed of die-cast zinc with plastic roller gliders for a noise free use  
**Hardware:** A2 stainless steel

### FABRIC COVER

**Fabric:** The Sunplus can be equipped with any of the standard acrylic fabrics, fire retardant fabrics, or shade fabrics. Specific fabrics may be available upon request by specifier and approved by manufacturer.  
**Thread:** Thread to be PTFE GORE TENARA when using acrylic or fire retardant fabrics. Shade fabrics will be welded with maximum 1/2" visible seam.

### MOTOR

The Sunplus is equipped with a 50 Nm wired or wireless SOMFY motor. Motor can be mounted on left or right side of the cassette.  
**Wired motor:** SOMFY LT 50-550R2  
**Wireless motor:** SOMFY ALTUS RTS 550R2-ALTUS

### FRAME COLORS

The Sunplus frame is available in white or brown. Custom colors may be available upon request.

**White:** RAL 9016  
**Brown:** RAL 8019  
**Custom:** RAL number supplied by specification

### MOUNTING

**Guide Rails:** One piece extruded aluminum 4-5/16" x 3-9/16" with integrated rain gutters and tracks for front bar and tape drive travel. Lower mounting grooves for the upright top hinge and the fabric support tube.  
**Legs:** One piece extruded aluminum 2-3/8" x 2-3/8" x 3/16", attached to the guiding rail by top hinge and bottom plate.  
**Wall Bracket:** Aluminum wall bracket with an adjustable tilting range of 0-35 degrees.

### MAXIMUM DIMENSIONS

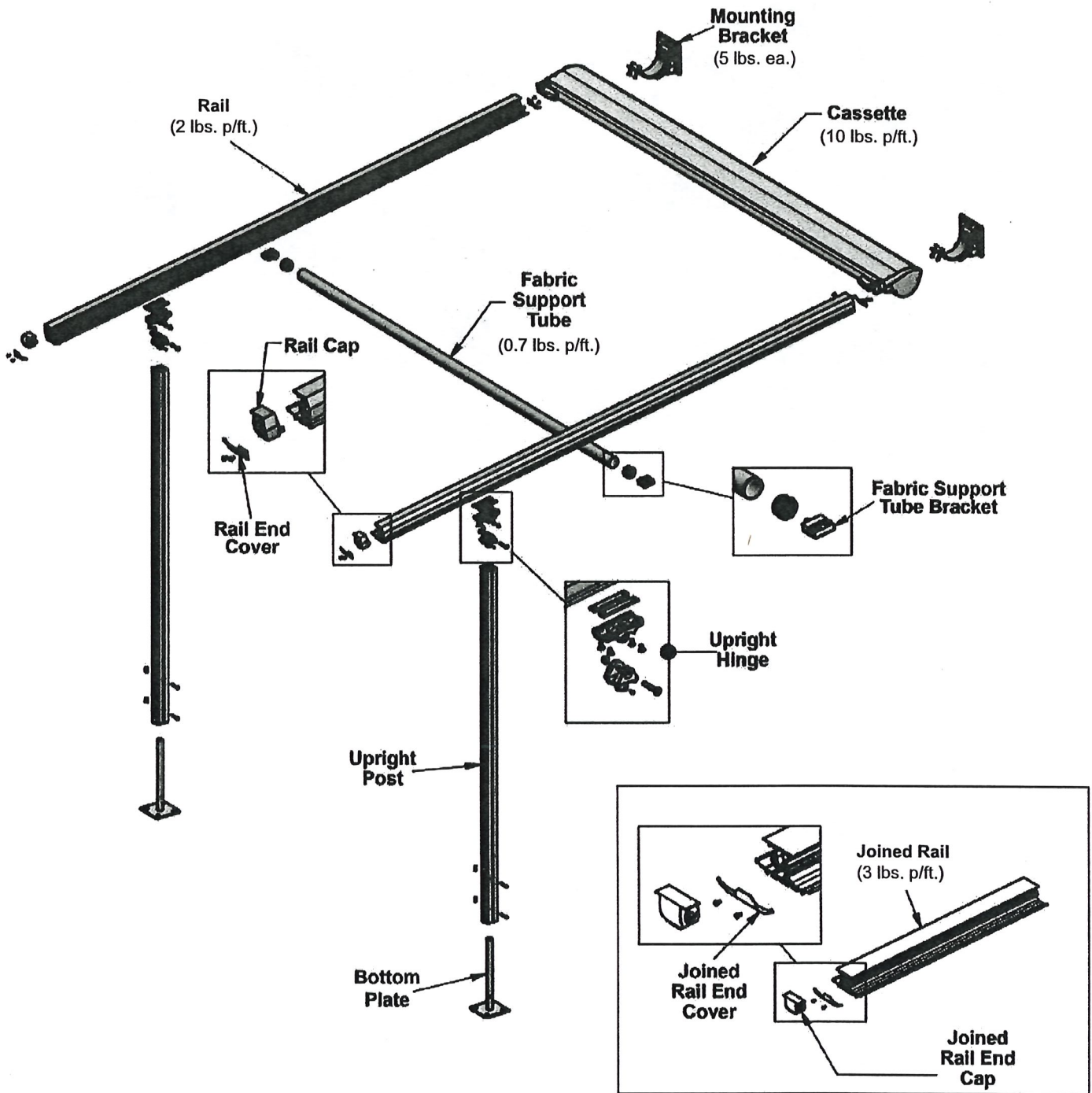
Maximum single unit width is 16'. Multiple units may be joined together to achieve widths wider than 16'. Maximum projection for any unit is 23'. When joining multiple units, projections are not required to be equal.

### FABRIC SUPPORT TUBES

Required fabric support tubes by projection: Up to 12' = 1 support tube. 12'-17' = 2 support tubes. 17'-23' = 3 support tubes. Additional support tubes are available upon request.

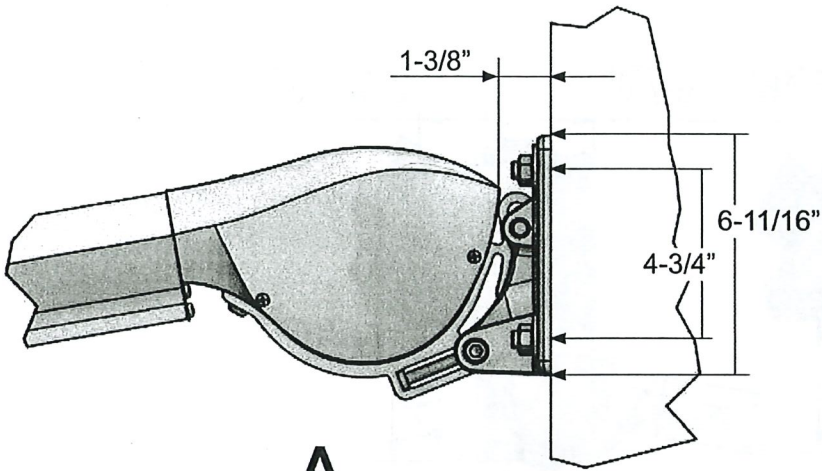
### WIND INFORMATION

The Sunplus is operational at wind speeds up to 30mph and can be used in a stationary position at wind speeds up to 40mph. We do not recommend the use of the Sunplus in winds greater than 40 mph. In these conditions the product should be fully retracted to ensure safety.  
© Copyright 2013 Sunesta Products, LLC • Specifications subject to change without notice.

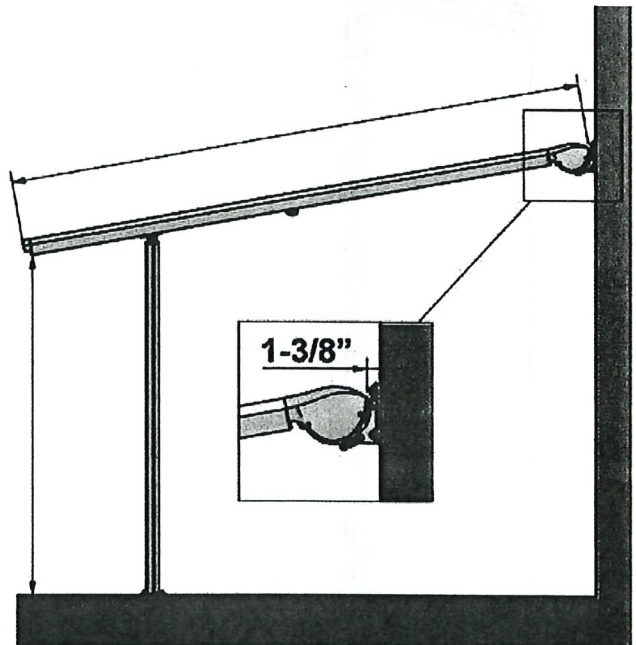
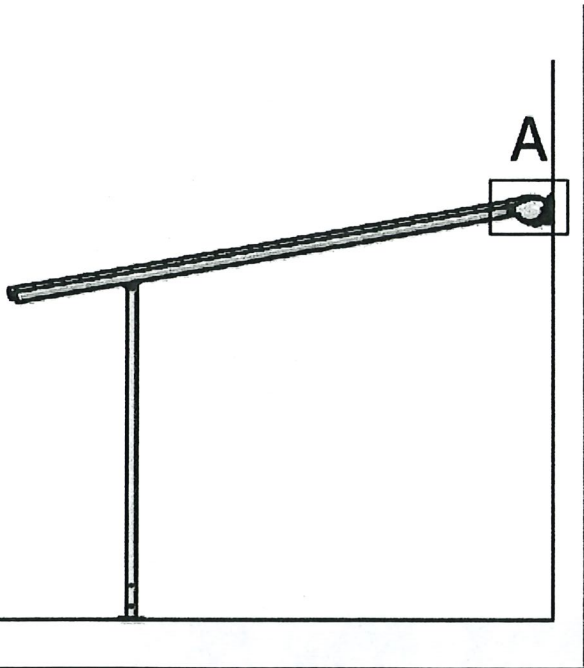
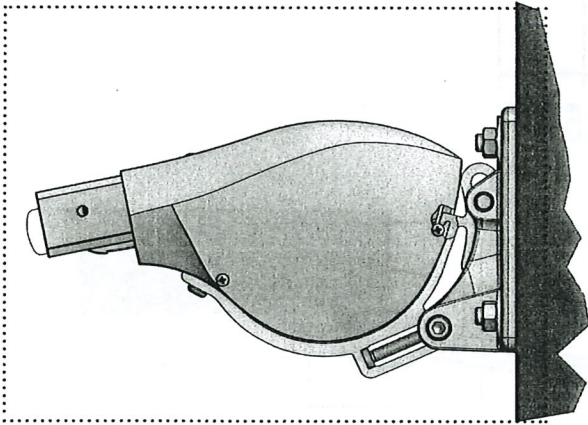
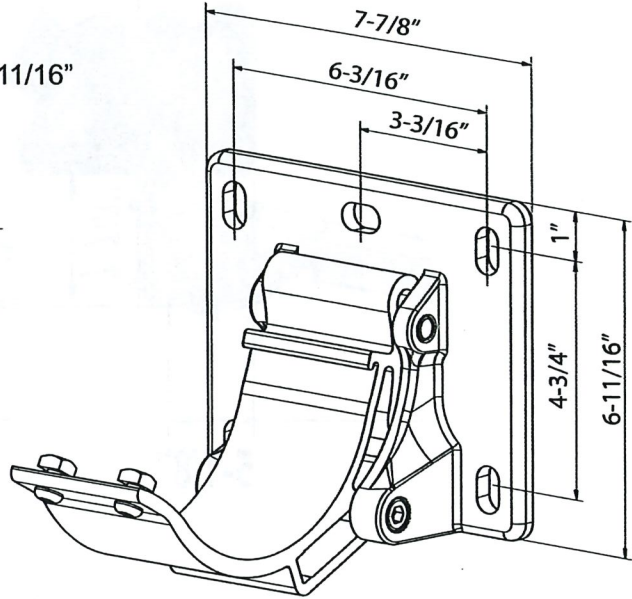




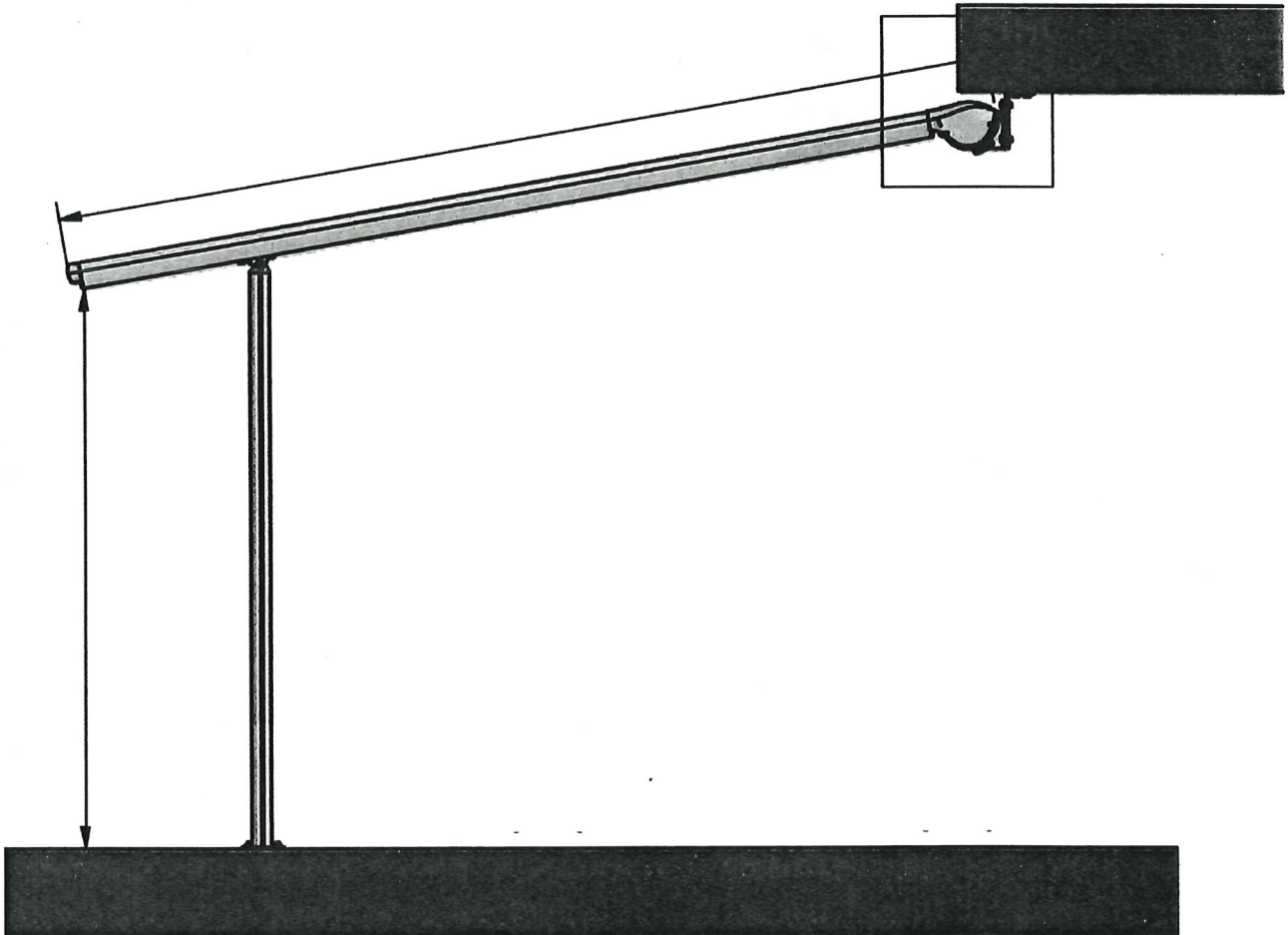
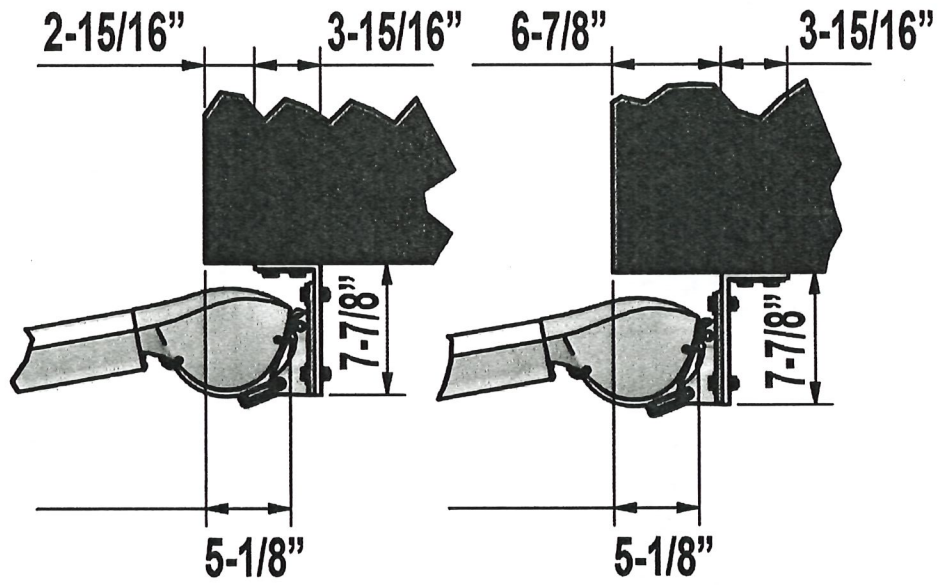
**WALL MOUNTING**



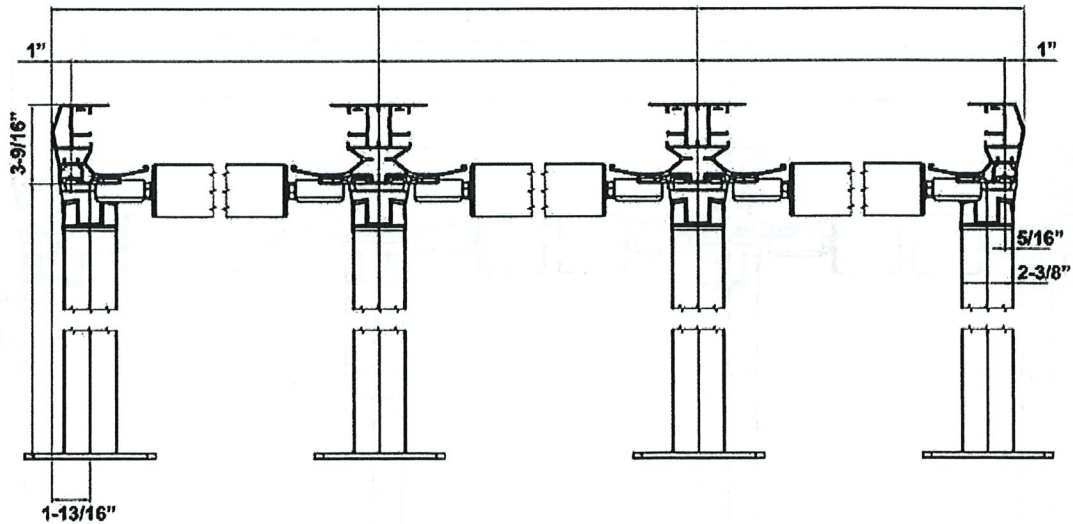
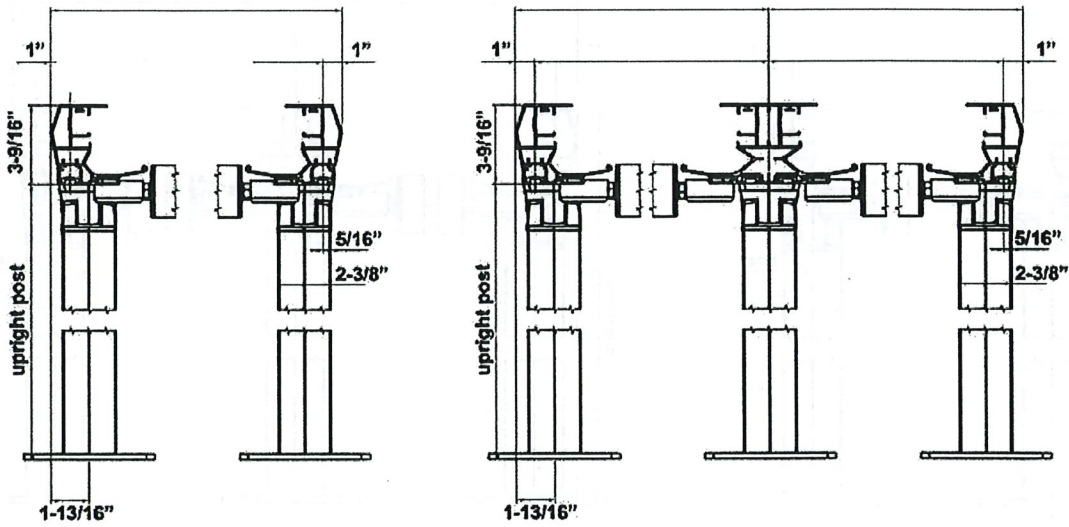
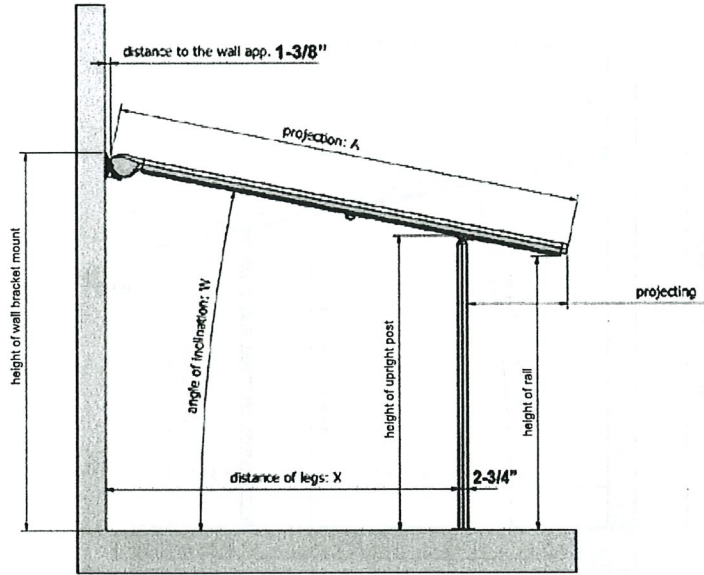
**A**



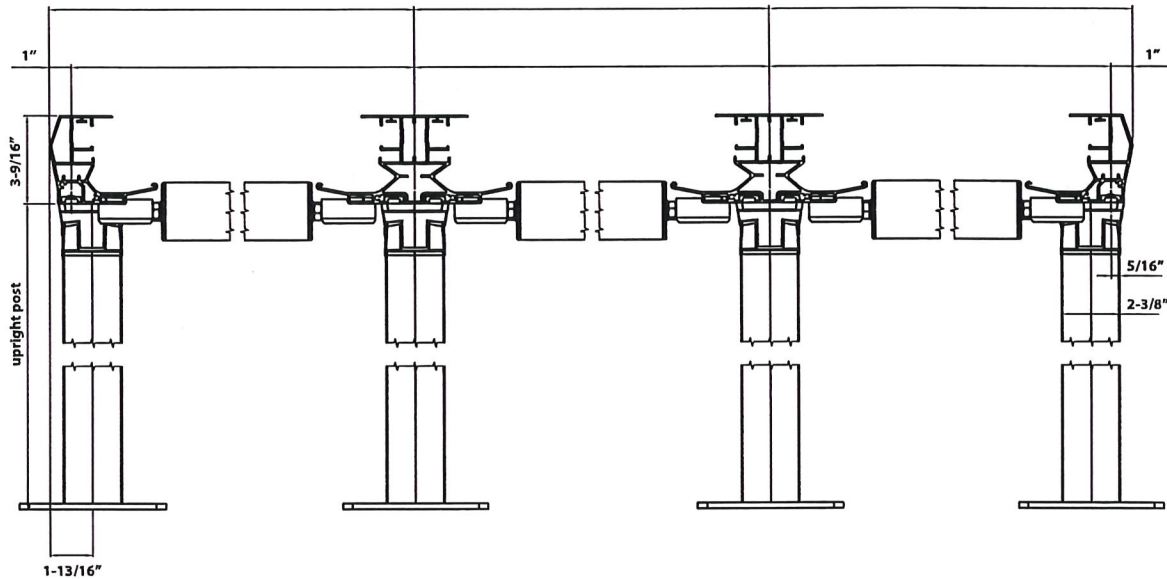
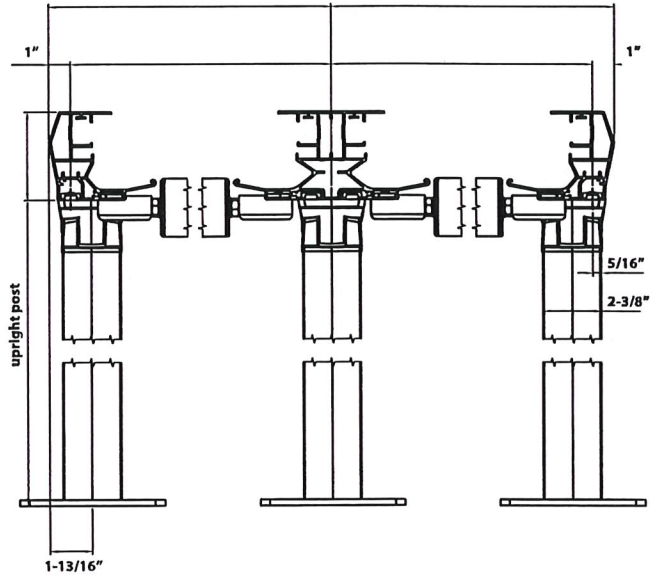
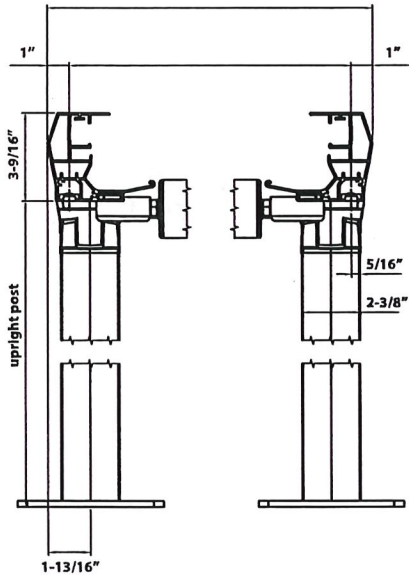
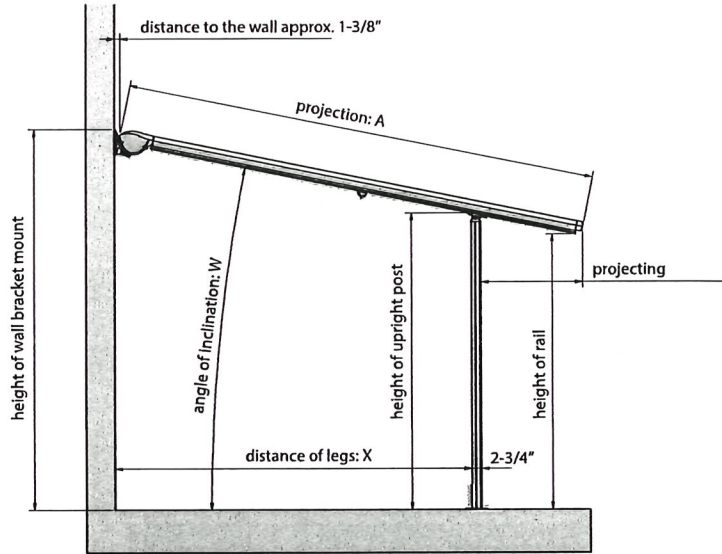
**CEILING MOUNTING**

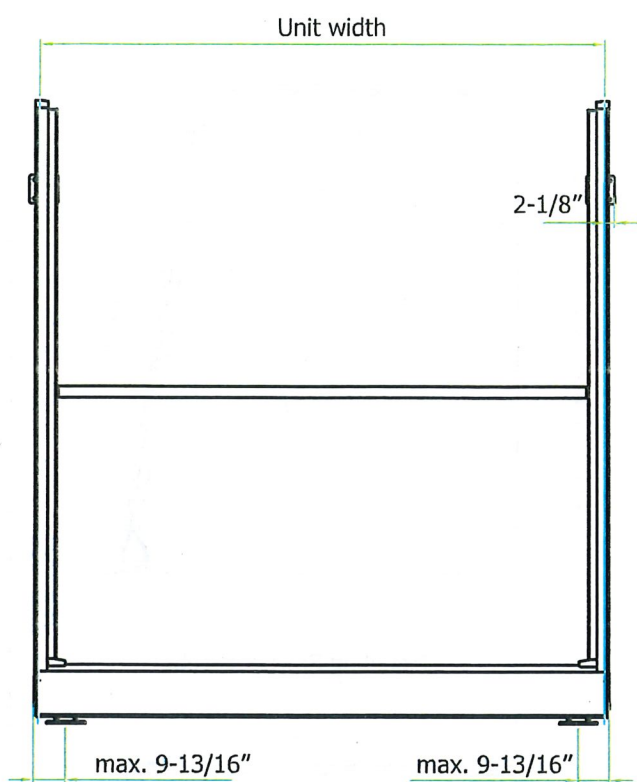
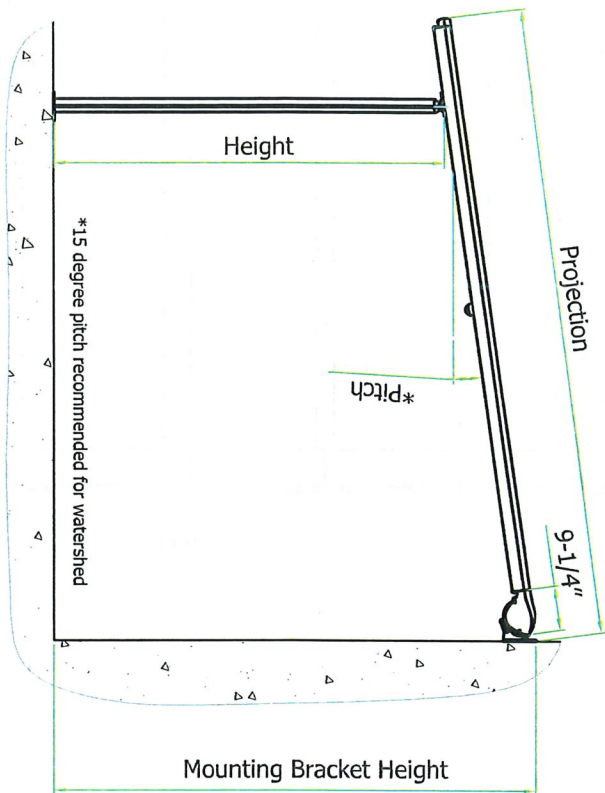


# SUNPLUS DIMENSIONS

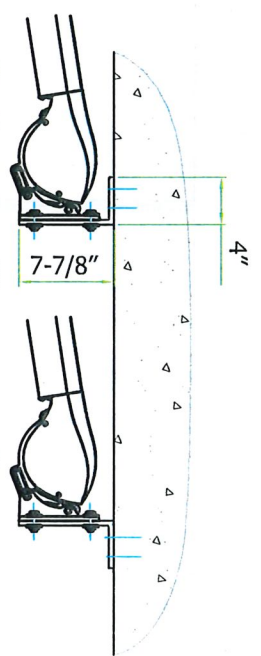
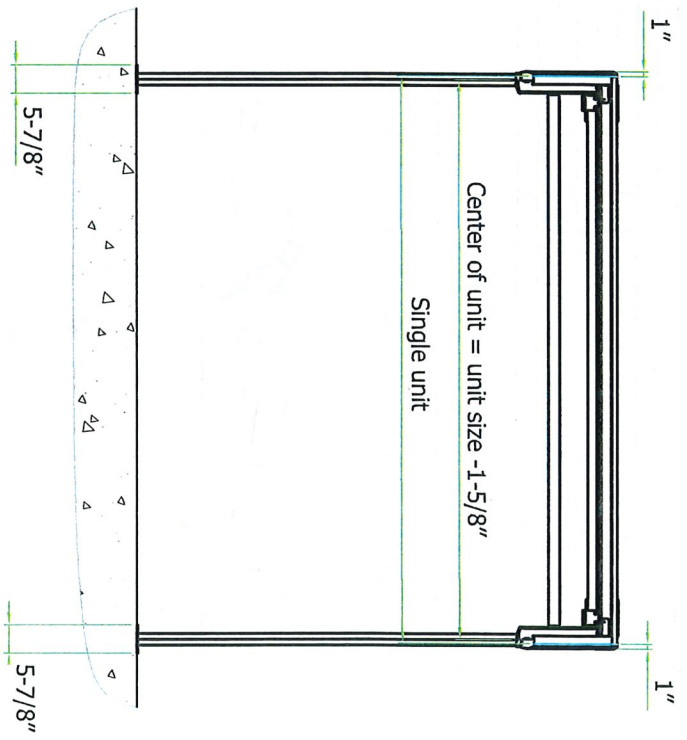


# RAIL & UPRIGHT DIMENSIONS





Mounting bracket position



Optional ceiling mounting

General tolerances to		Scale	Material:	Drawing Name <b>Sunplus</b>
Not To Scale		Surface:		
Date	Name			Drawing Number Single Unit Wall / Ceiling Mounting <b>Sunplus 02-10</b>
10-16-2012				
Copyright 2012 Sunesta Products, LLC Jacksonville, FL 32236		Model		





