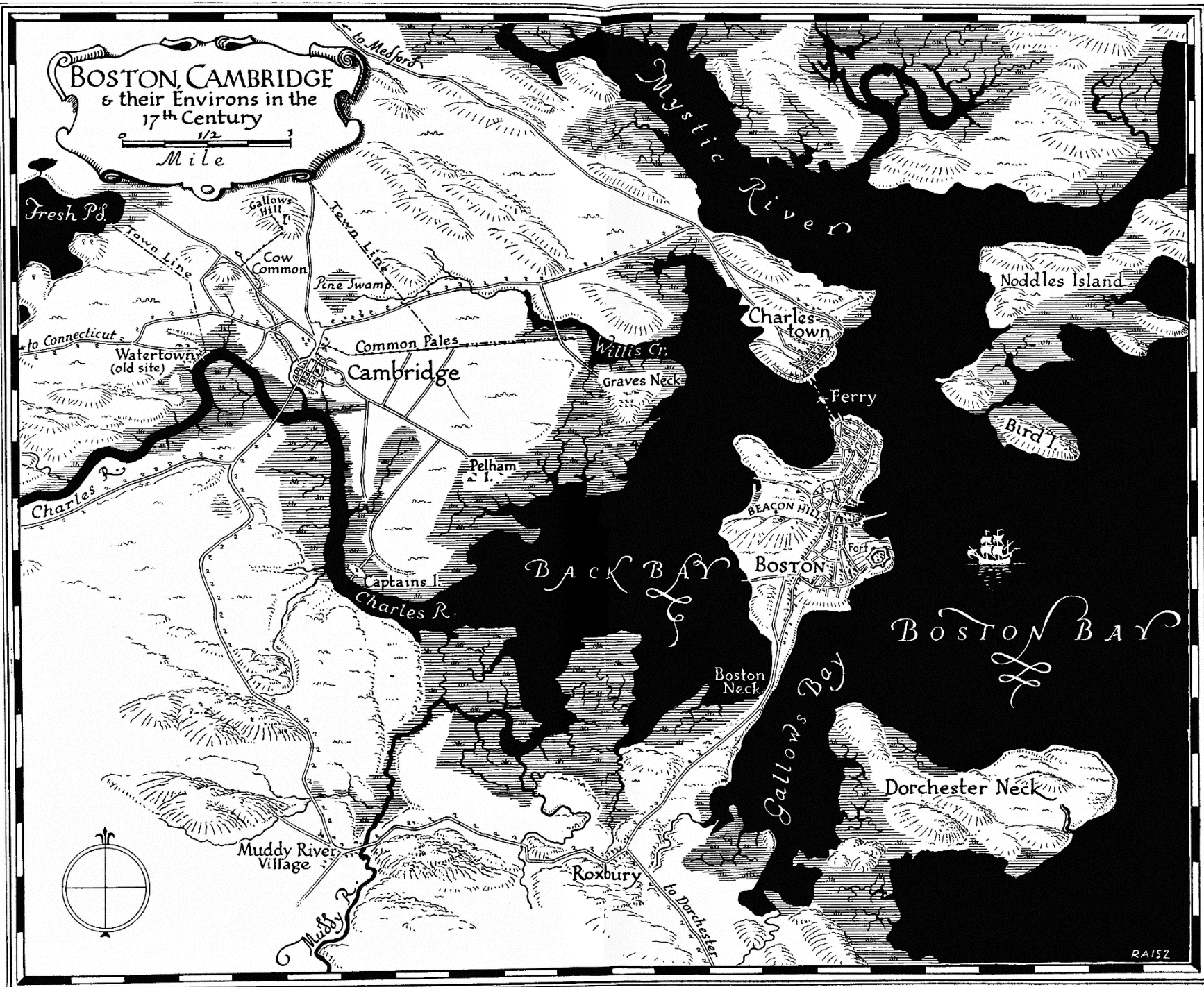


# Cambridge History & Housing Development

**Cambridge Historical Commission**

**January 28, 2016**



Reconstructed plan of Cambridge and environs in the 17th century

RA15Z



Loyalist Estates in 1775



The Village  
(Harvard Square)  
seen from the  
north in 1775



Tory Row in 1775,  
looking east

Lechmere estate  
in the foreground,  
the village in the  
distance



105 Brattle Street,  
1760



30 Elmwood Avenue,  
1757



64 J.F. Kennedy Street, ca. 1725; demolished 1900





Henry Pelham,  
Map of Boston,  
1777



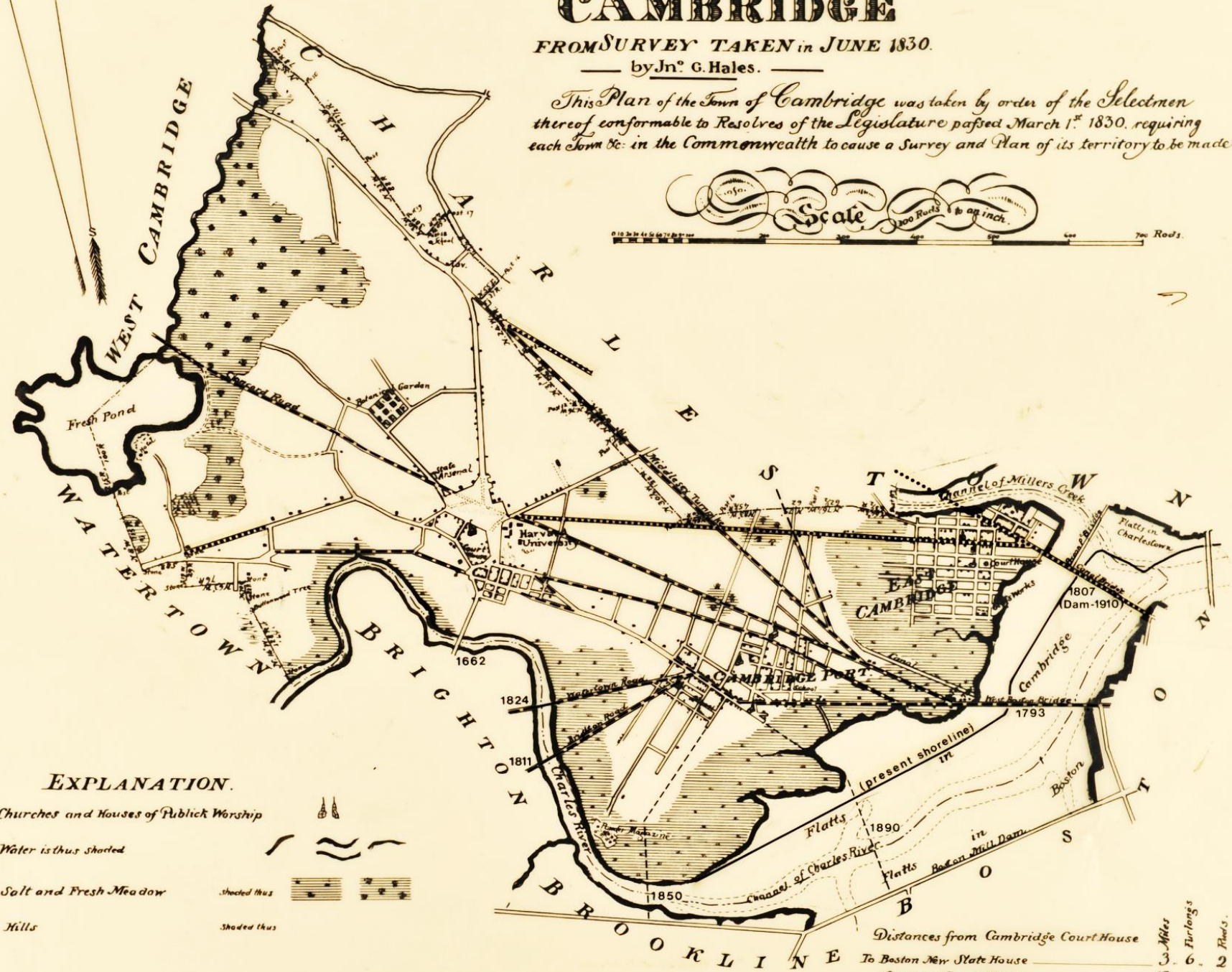
West Boston (Longfellow) Bridge, 1793

# CAMBRIDGE

FROM SURVEY TAKEN in JUNE 1830.

— by Jn<sup>o</sup>. G. Hales. —

*This Plan of the Town of Cambridge was taken by order of the Selectmen thereof conformable to Resolves of the Legislature passed March 1<sup>o</sup>. 1830. requiring each Town &c. in the Commonwealth to cause a Survey and Plan of its territory to be made.*



## EXPLANATION.

Churches and Houses of Publick Worship



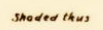
Water is thus shaded



Salt and Fresh Meadow



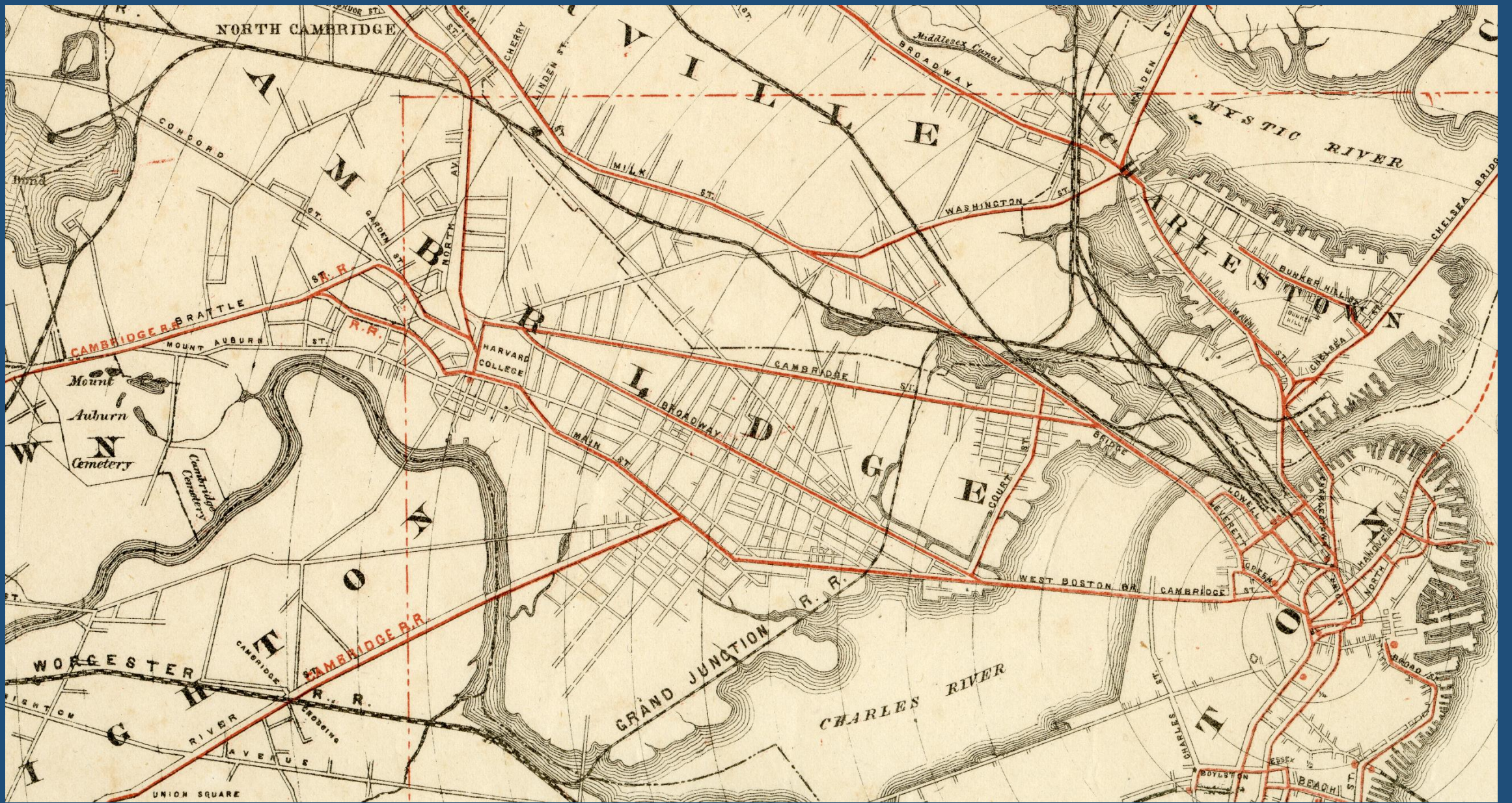
Hills



Distances from Cambridge Court House

	Miles	Furlongs	Rods.
To Boston New State House	3	6	2
" Concord Court House	13	4	28
" East Cambridge Court House	2	2	20

Bridges and turnpikes, 1830



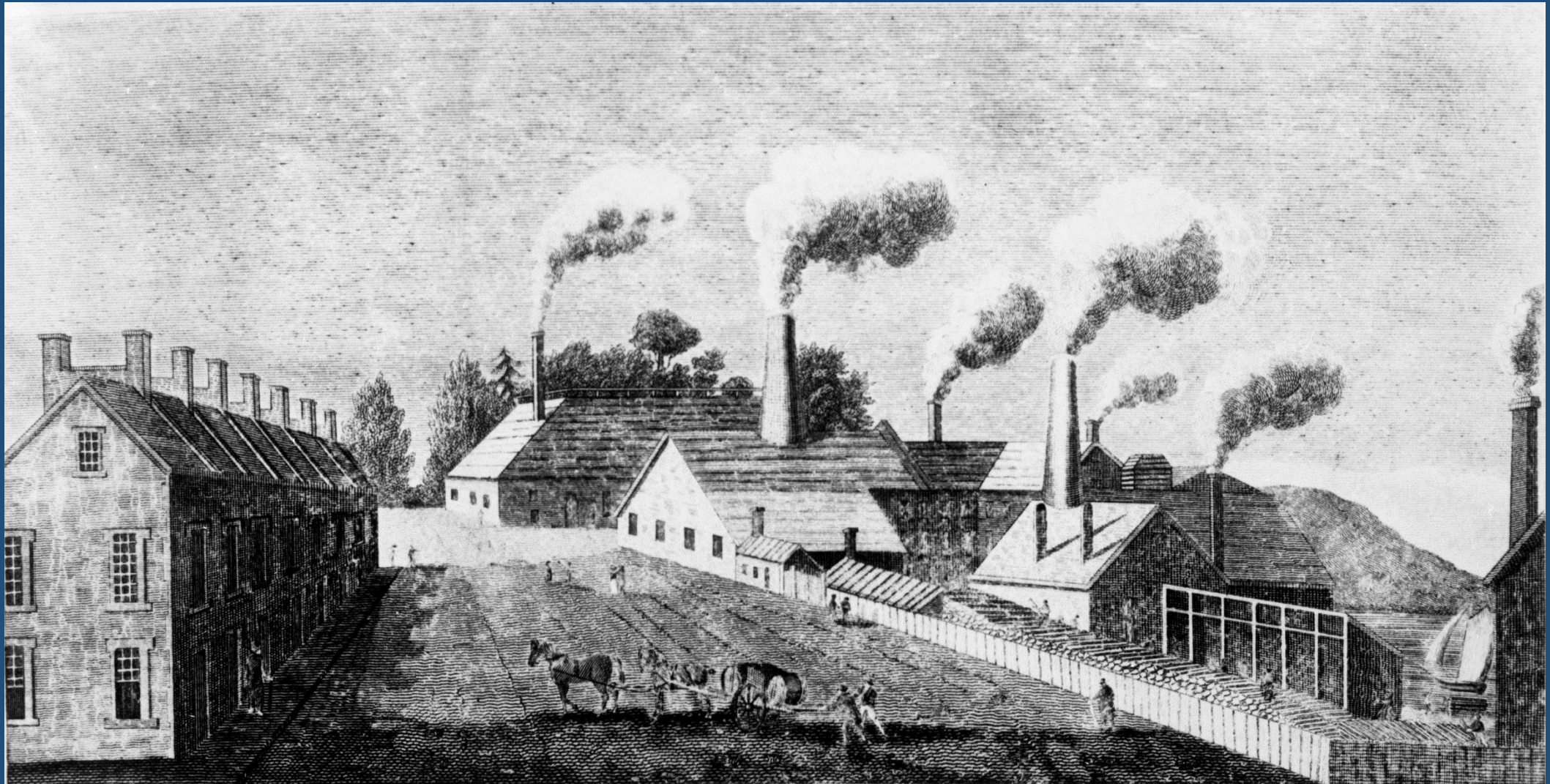
Horsecar routes through Cambridge in 1865



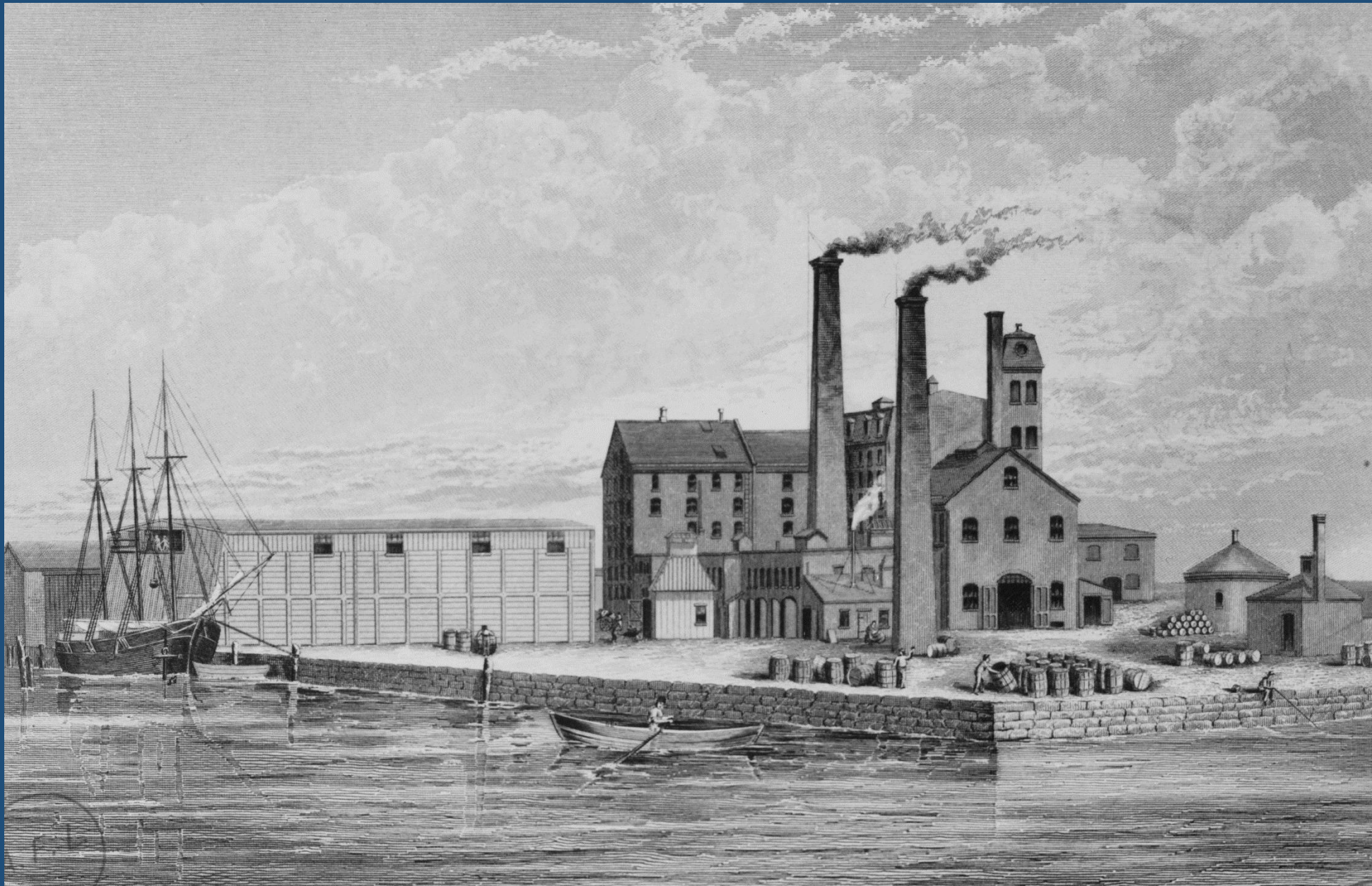
Horsecar traveling eastbound on Brattle Street passes the corner of Riedesel Avenue, ca. 1890.



East Cambridge  
from Beacon Hill,  
Boston, ca. 1860



New England Glass Works, East Cambridge, ca. 1825

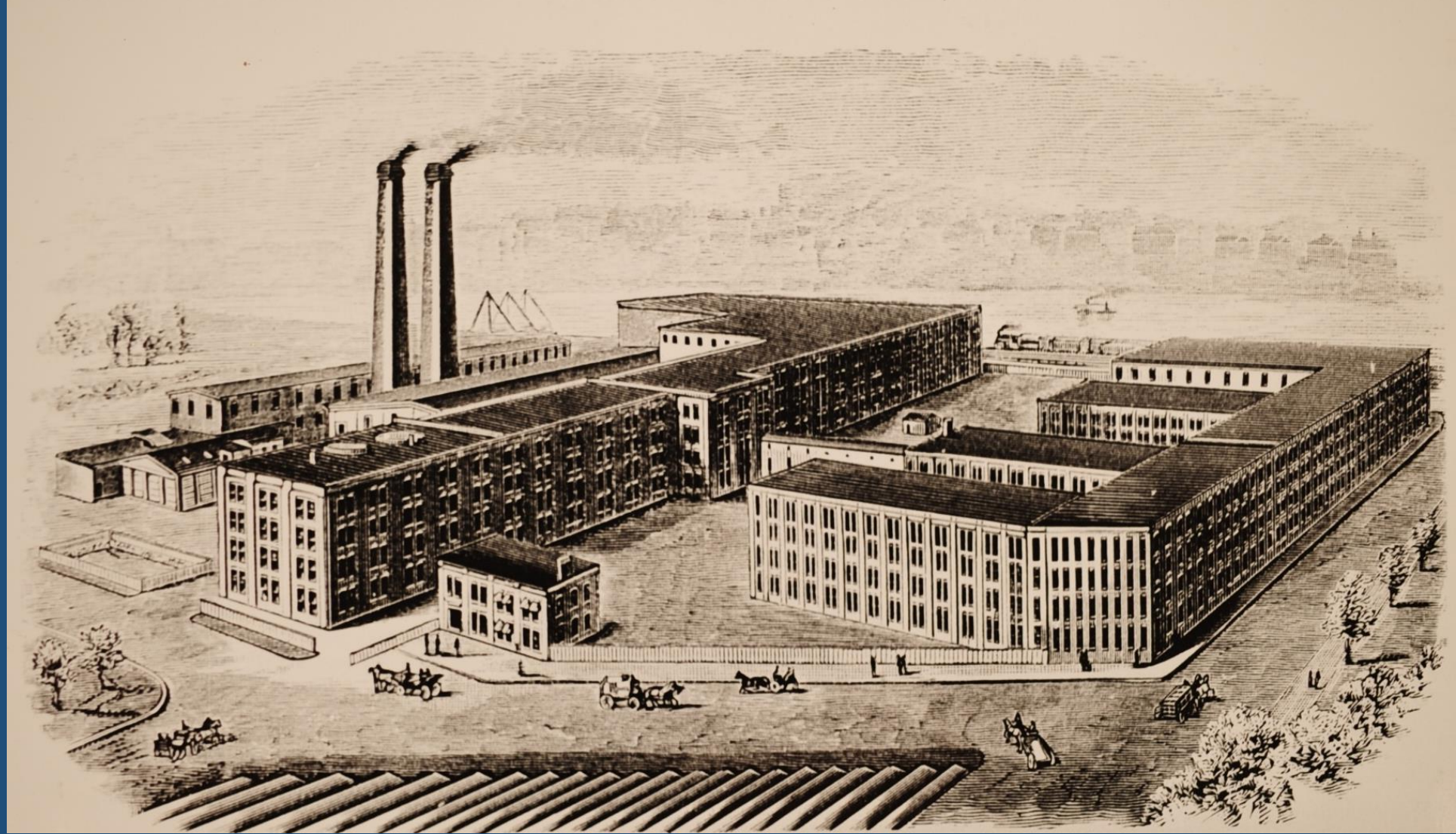


Revere Sugar  
Refinery,  
East Cambridge  
ca. 1870

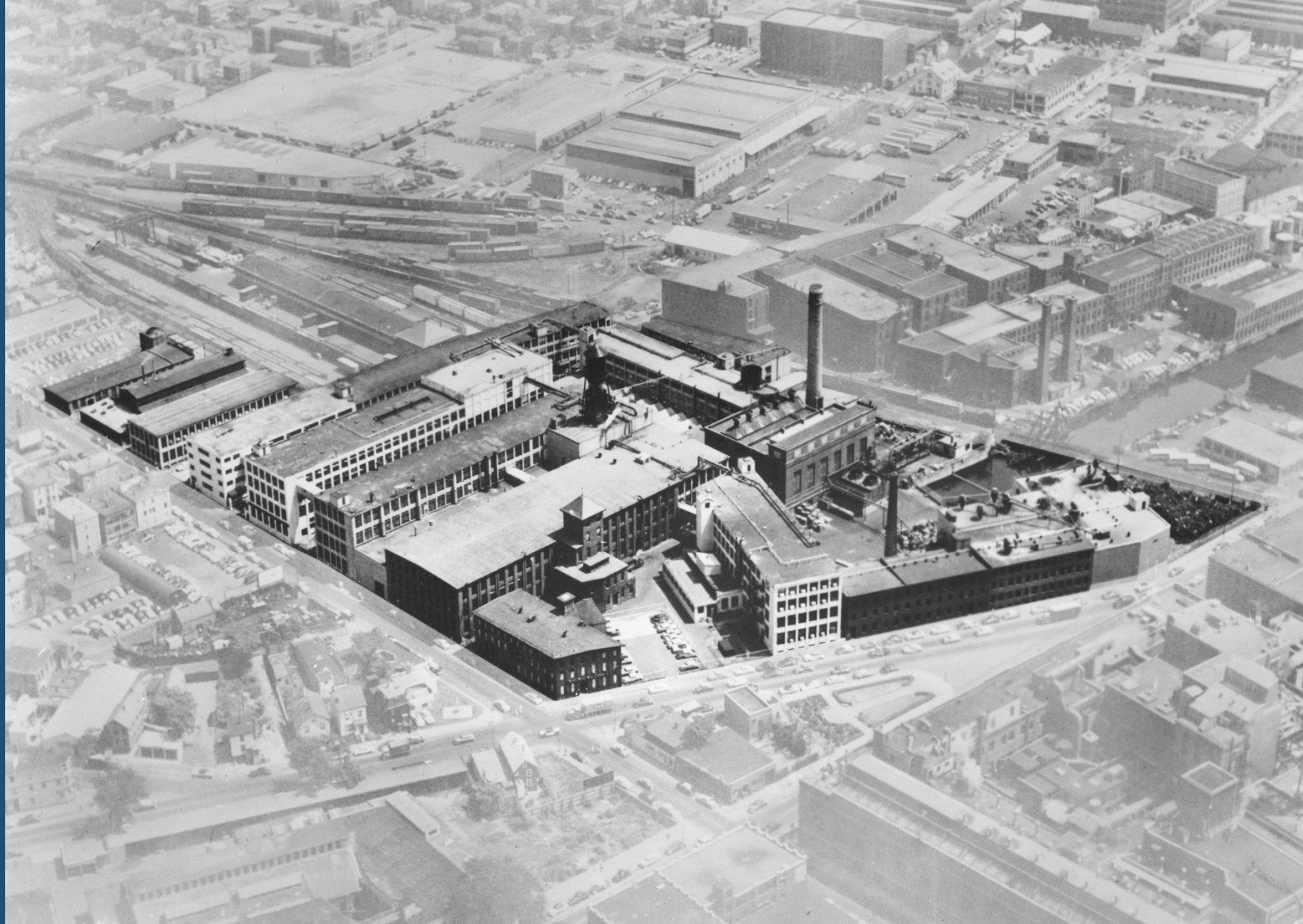




Lechmere Canal,  
ca. 1925



**American Rubber Co., Binney Street**



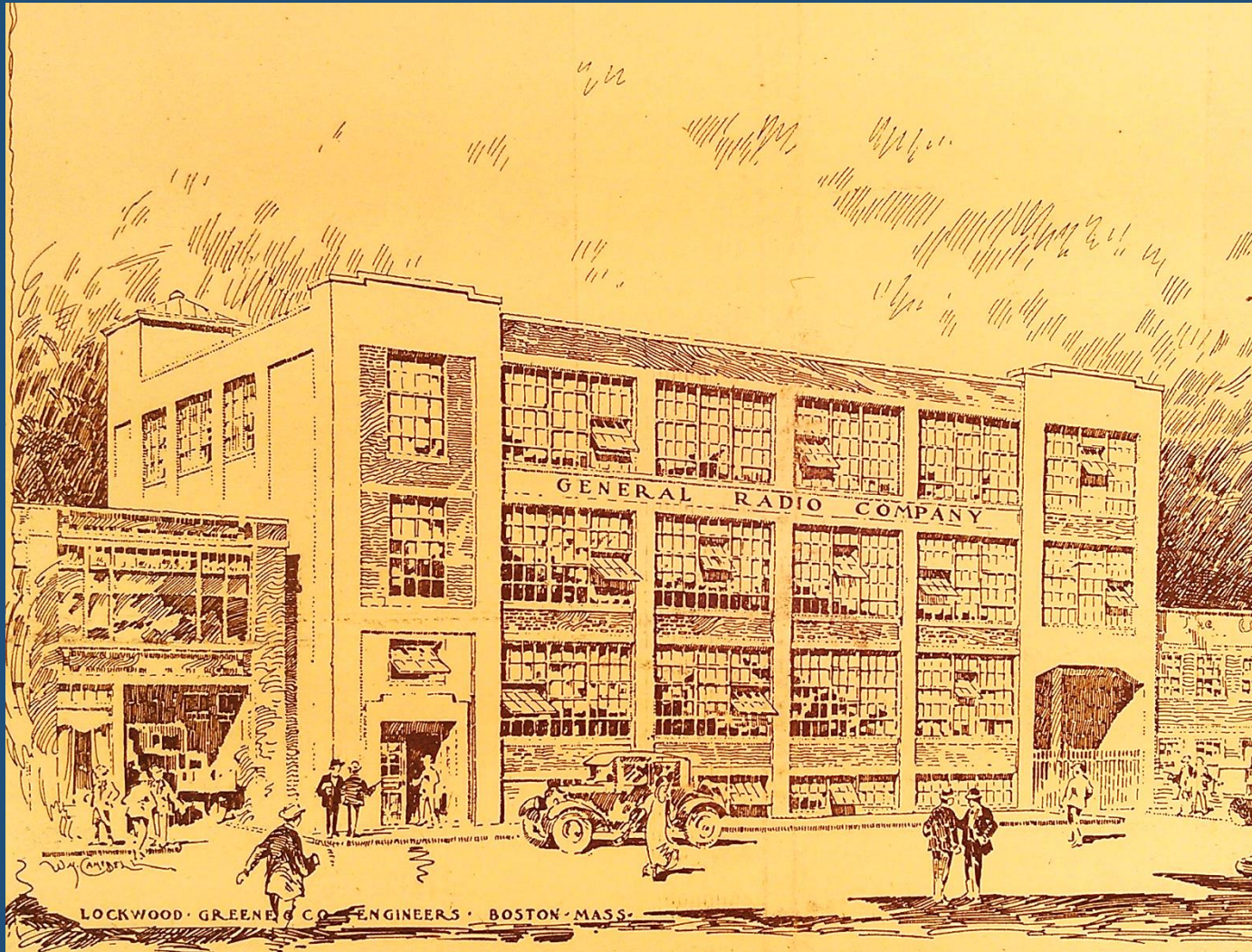
**Boston Woven Hose, Binney Street**



Ford Motor Co. Assembly Plant, 640 Memorial Drive



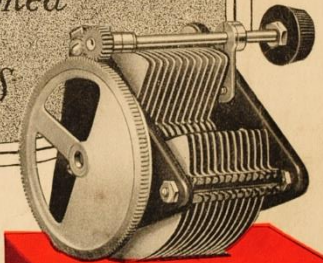
VIEW OF THE NEW GENERAL RADIO BUILDING



VIEW OF THE NEW GENERAL RADIO BUILDING

Catalog  
of  
**Quality  
Radio  
Apparatus**

*Scientifically Designed  
by  
Radio Engineers*



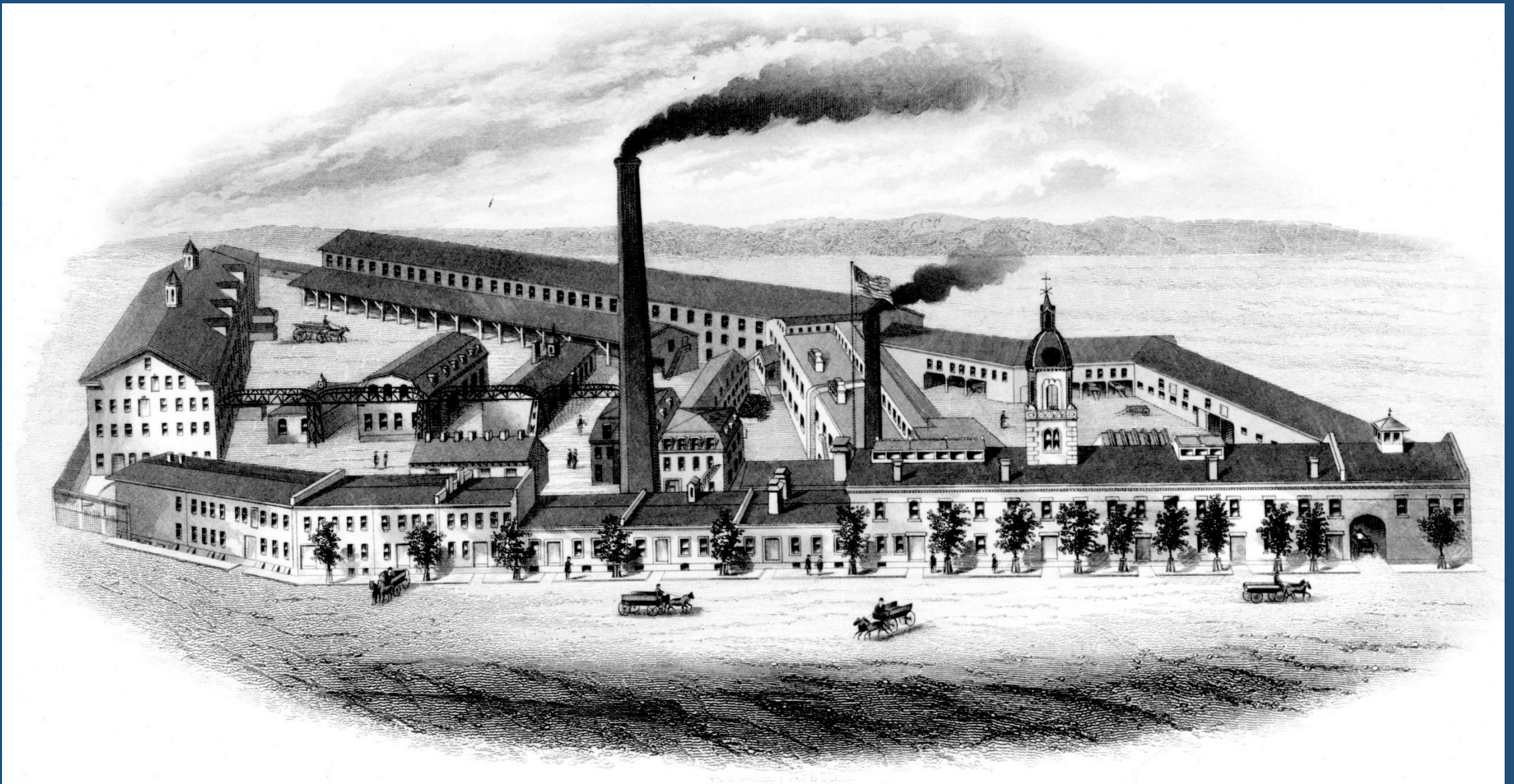
Manufactured by the

**GENERAL RADIO Co**  
Cambridge, Mass., U.S.A.





Athenaeum Press, 215 First Street, ca. 1925



John P. Squires Co., East Cambridge



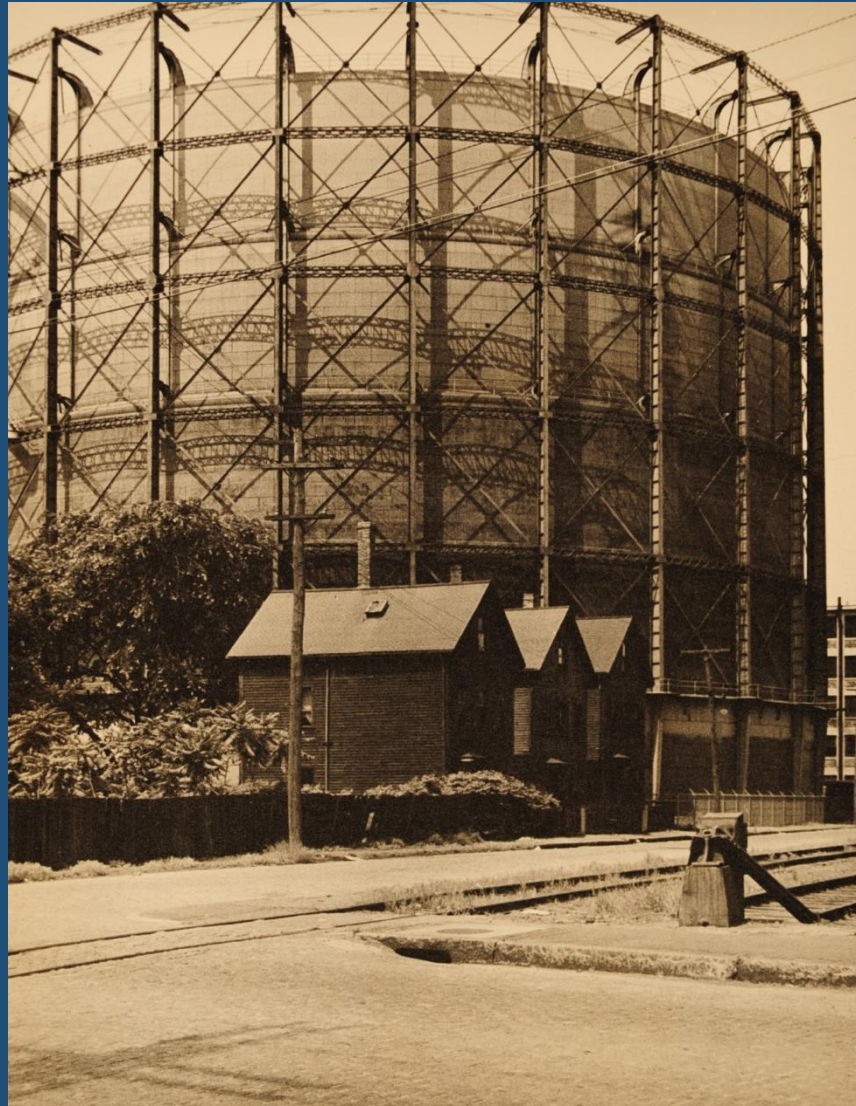




John P. Squires,  
1963



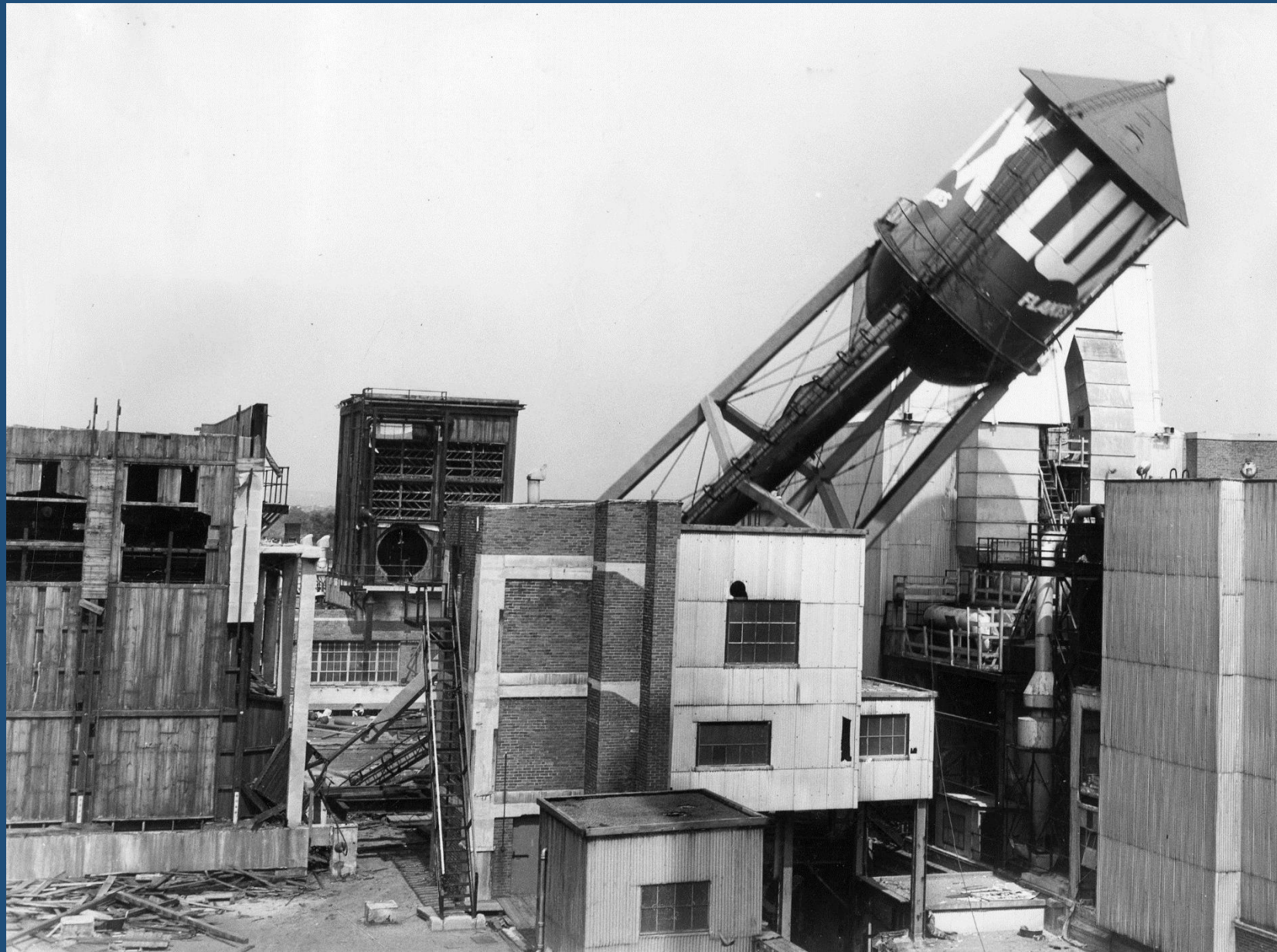
Kendall Square, 1964



**Gas holder, cor. Third and Rogers Streets.  
Photo ca. 1940**



Site of Tech Square  
and Draper Labs.  
Photo ca.1955





## Groundbreaking for Tech Square, 1961

Gov. Volpe, MIT President Killian, - Robinson, Gerald Blakely, Mayor Edward Crane



Tech Square, 1961-1965





Kendall Square, 2011



The Port in 1877

- 1 City Hall, Main Street
- 2 County Court House, Third St
- 3 First Church, (Episcopal), No
- 4 First Church, (Presbyterian), G
- 5 Church, (Episcopal), G
- 6 Cambridgeport Church, (Unit
- 7 First Baptist Church, Main
- 8 First Methodist Church, Ma
- 9 Second Methodist Church, G
- 10 Third Methodist Church, Co
- 11 Third Congregational Church,





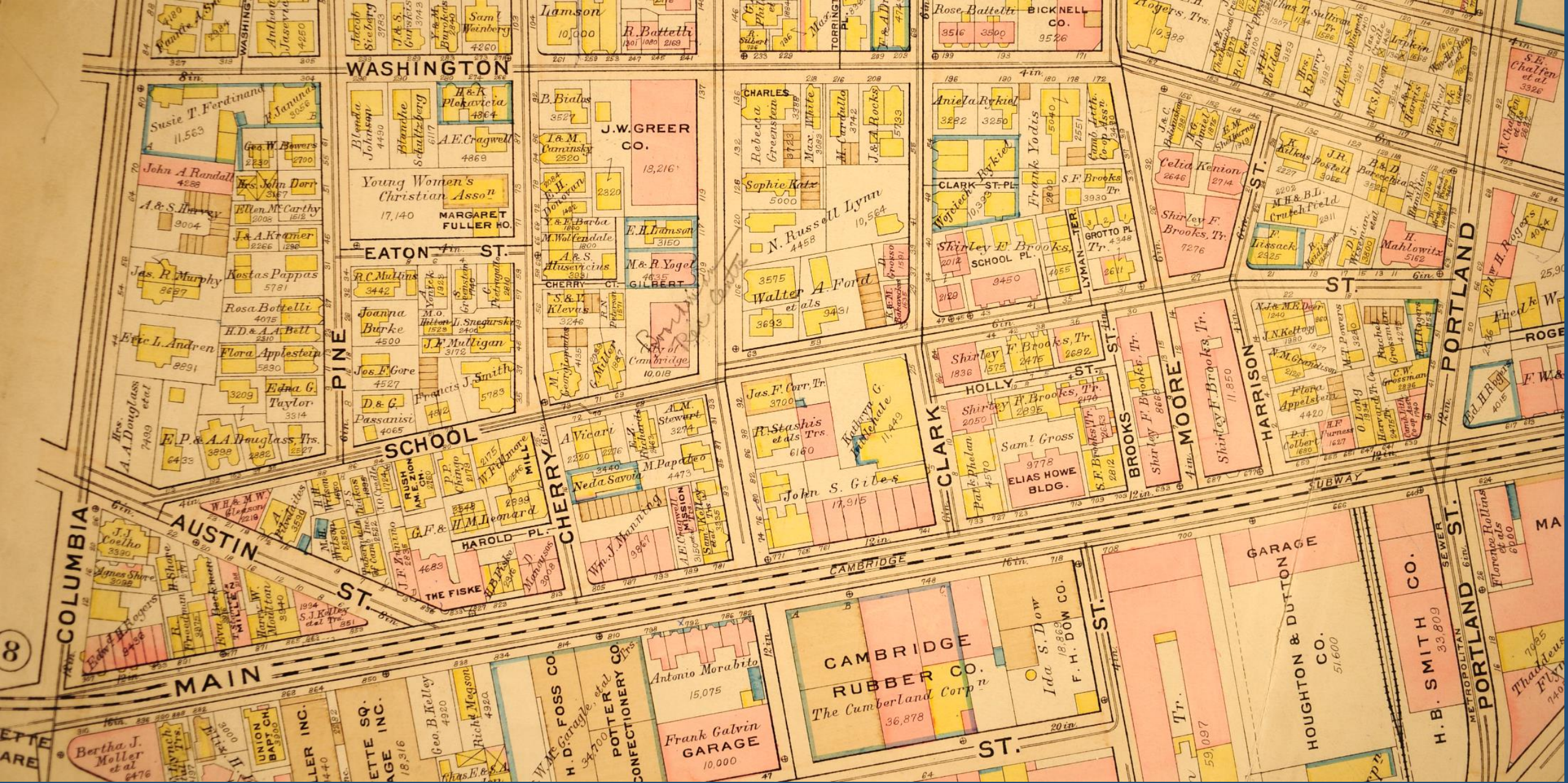
35, 37, and 41 Clark Street, 1901



Clark and School streets, looking east, 1901



Clark Street Place,  
1901



G.W. Bromley, Atlas of Cambridge, 1930



Newtowne Court  
Federally-funded  
public housing,  
1938





Newtowne Court, 1937



Move-in day, January 1938



U.S. H. A.-AIDED HOUSING PROJECT  
· NEWTOWNE COURT EXTENSION ·  
· CAMBRIDGE, MASSACHUSETTS ·  
· CAMBRIDGE HOUSING AUTHORITY ·  
· PERRY, SHAW & HEPBURN - McLAUGHLIN & BURR ·  
· ASSOCIATED ARCHITECTS ·



Newtowne Court Extension (Washington Elms), 1940



CAMBRIDGE HOUSING AUTHORITY  
CAMBRIDGE MASS.  
STATE AIDED HOUSING PROJECT  
FOR VETERANS No 200-4  
DESMOND & LORD ARCHITECTS

•USO DONGFIO•



Roosevelt Towers, 1952



Jefferson Park, 1949



Rindge Towers, 1969



## Jefferson Park

Cambridge, Massachusetts



### Project

*The reconfiguration and redevelopment of an existing 180 unit public housing development in Cambridge, Massachusetts*

### Client

*Winn Development, Boston Massachusetts & The Cambridge Housing Authority  
Cambridge, Massachusetts*

### Budget

*\$16,000,000*

### Design Challenge

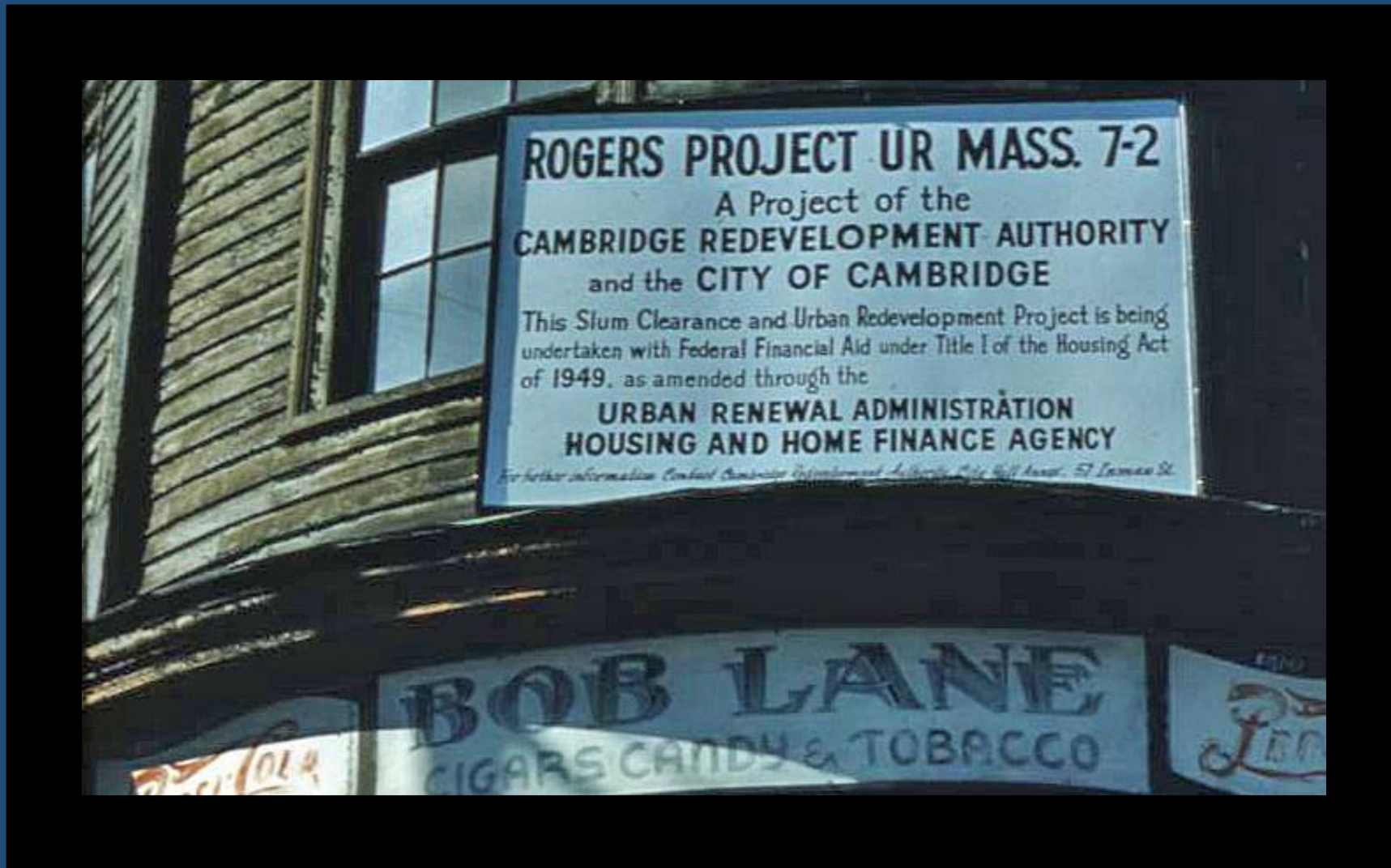
*To rehabilitate an existing failed public housing development with new building and unit configurations which promote a sense of security, ownership, and community pride among residents*



Jefferson Park rehabilitation, 1988



Rogers Block, corner Main and  
Harvard Streets. Photo ca. 1950



Rogers Block Urban  
Renewal Project. Photo ca. 1950



Demolition of the Rogers Block, 1957





24 Kelly Road  
Owner-occupied  
Home Improvement  
Project



11 and 13  
Seventh Street  
Owner-occupied  
Home Improvement  
Projects



26-34 Fulkerson St.  
Investor-owned





93-97 Pine Street,  
1903  
Agency-owned  
Rehabilitated 2010



Former Immaculate  
Conception Church,  
Windsor Street  
Agency owned



Chapman Arms  
2 University Rd  
(Harvard Square)  
Agency owned