



2021 Cambridge Watershed Site Monitoring Program Report

June 2022

Introduction

The Cambridge Watershed Site Monitoring Program Report is a summary of the site monitoring, outreach, and review efforts of the Cambridge Water Department (CWD)'s Watershed Management Division. Through the Site Monitoring Program, CWD identifies possible sources of contamination in the 24 square mile surface water supply watershed, seeks mitigation of impacts through the implementation of Best Management Practices (BMPs), and explores opportunities to realize improvements to watershed water quality. The Cambridge surface water supply watershed encompasses land and water bodies in the municipalities of Cambridge, Lexington, Lincoln, Waltham, and Weston.

This report contains status updates, as well as locational maps, for sites of interest throughout the watershed and surrounding areas in 2021. It also identifies sites of interest by watershed protection zone, project size, development type, and municipality. The watershed protection zones (A, B, and C) are defined in 310 CMR 22.00. Zone A is the most sensitive zone with the most restrictions on development. It encompasses all areas 400 feet from a reservoir or 200 feet from a tributary to a water supply. Zone B includes all areas within a half mile from a reservoir and Zone C contains all other areas within the drinking water watershed. CWD categorizes active projects into four size categories by square footage: Small (<5,000), Medium (5,000-43,599), Large (43,560-299,999), and Major (>=300,000).

Major development projects in close proximity to the Cambridge reservoirs and tributaries (Zone A) pose the greatest risk to water quality during construction. New Development projects that convert natural land cover (such as forests) to impervious surfaces with higher pollutant loads represent the greatest long-term threat to water resources. However, most New Development projects must meet stormwater management standards set by state and local regulatory agencies to minimize the impact on source water.

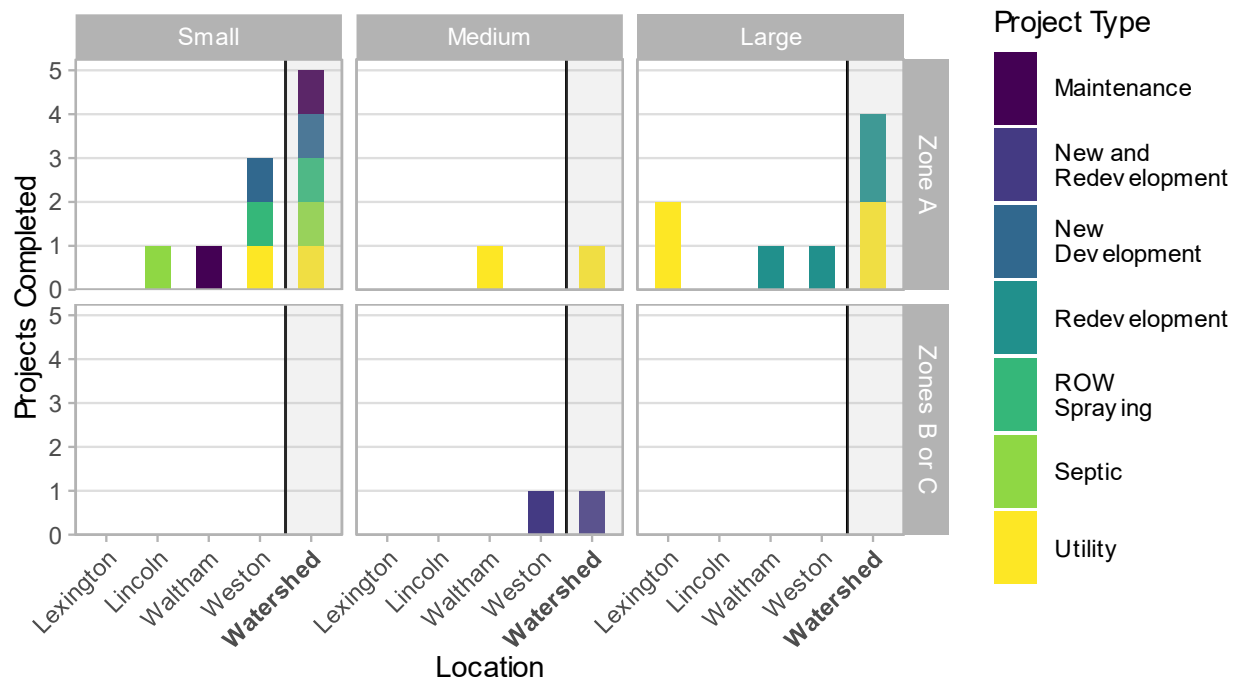
Completed Projects

Eleven (11) Maintenance, Redevelopment, Utility, New Development, New and Redevelopment, ROW Spraying, and Septic projects located within the Cambridge surface water supply watershed were completed during 2021. Utility projects were the most common type of project completed in 2021 (4 of 11), followed by Redevelopment (2 of 11). Weston and Waltham had the most sites where construction ended in 2021 (5 and 3 of 11, respectively). Of the 11 projects completed during 2021, 10 were in the Zone A. Projects completed in the Zone A were mostly

Small (5 projects) or Large (4 projects) in size but also included 1 Medium project. Zone A projects completed in 2021 consisted of Maintenance, Redevelopment, Utility, New Development, ROW Spraying, and Septic work.

See Figure 1 for a graphical summary of projects completed in the Cambridge watershed by size, watershed protection zone, municipality, and project type. Map 1 also displays approximate project locations by size and project type. View Appendix A for individual project descriptions and a summary of monitoring activities performed by CWD at each site.

Figure 1. Projects Completed in 2021
by Size, Watershed Protection Zone, Municipality, and Type

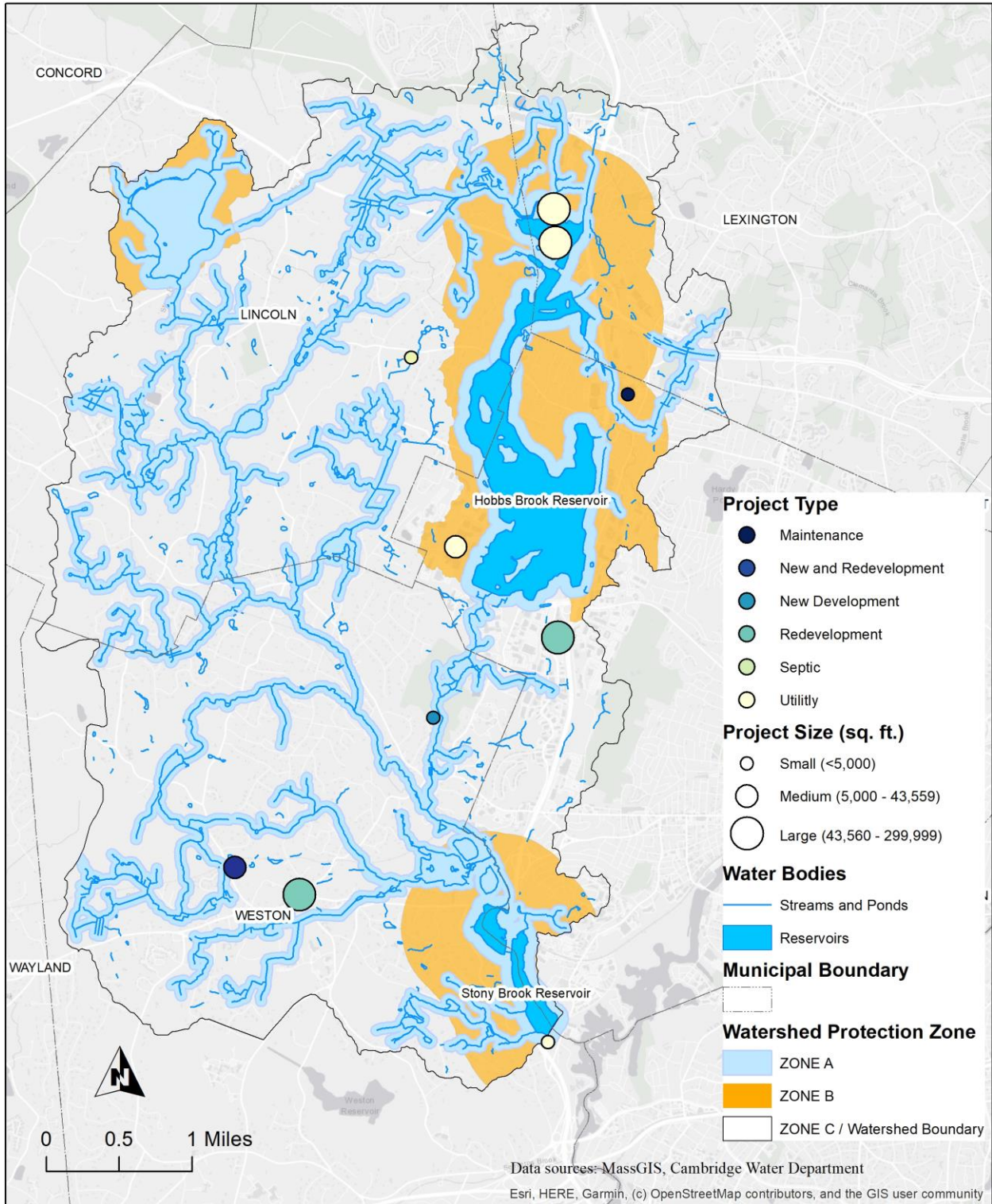


Project Size categories in sq.ft.: Small (<5000), Medium (5,000 – 43,559), Large (43,560 – 299,999), Major (>=300,000)

Zone A is 400 ft. from a reservoir or 200 ft. from a tributary to a drinking water supply. Zone B is 1/2 mile from a reservoir and Zone C encompasses all other areas in a drinking water supply watershed.



Map 1: Cambridge Watershed Projects Completed in 2021



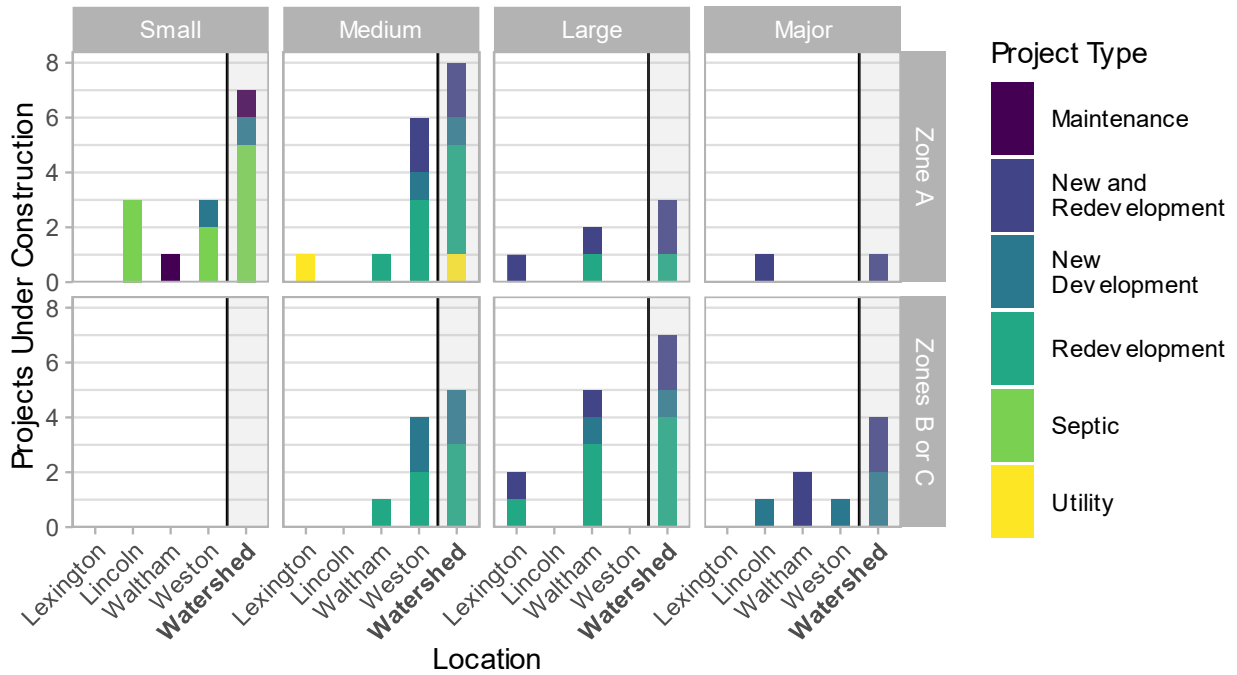
Projects Under Construction

Thirty-five (35) projects were under active construction as of December 31, 2021. Thirteen (13) of these were Medium sized projects, followed by Large, Small, and Major projects (10, 7, and 5, respectively). The types of projects under construction included Redevelopment (12), New and Redevelopment (9), New Development (7), Septic (5), Maintenance (1), and Utility (1). Weston (14) and Waltham (12) had the most projects under construction in the Cambridge watershed while Lincoln and Lexington had only 5 and 4 projects, respectively. In Weston, construction tended towards Medium (10) and Small (3) sized projects whereas projects in Waltham were predominately Large (7) and Major (2). The 5 largest construction projects (Major square footage category) in 2021 were underway in Waltham, Lincoln, and Weston.

The majority of construction sites were located within Zone A (19) with 16 sites in Zones B or C. Zone A construction projects were primarily Medium (8) and Small (7) in size, but also consisted of Large (3) and Major (1) projects. Within the Zone A, the most frequent types of projects under construction were New and Redevelopment (5) and Redevelopment (5), followed by Septic (5), New Development (2), Maintenance (1), and Utility (1).

See Figure 2 for a detailed graph of projects under construction in the Cambridge watershed by size, watershed protection zone, municipality, and project type. Map 2 also displays approximate construction project locations by size and project type. View Appendix B for individual project descriptions and a summary of monitoring activities performed by CWD at each site.

Figure 2. Projects Under Construction in 2021
by Size, Watershed Protection Zone, Municipality, and Type

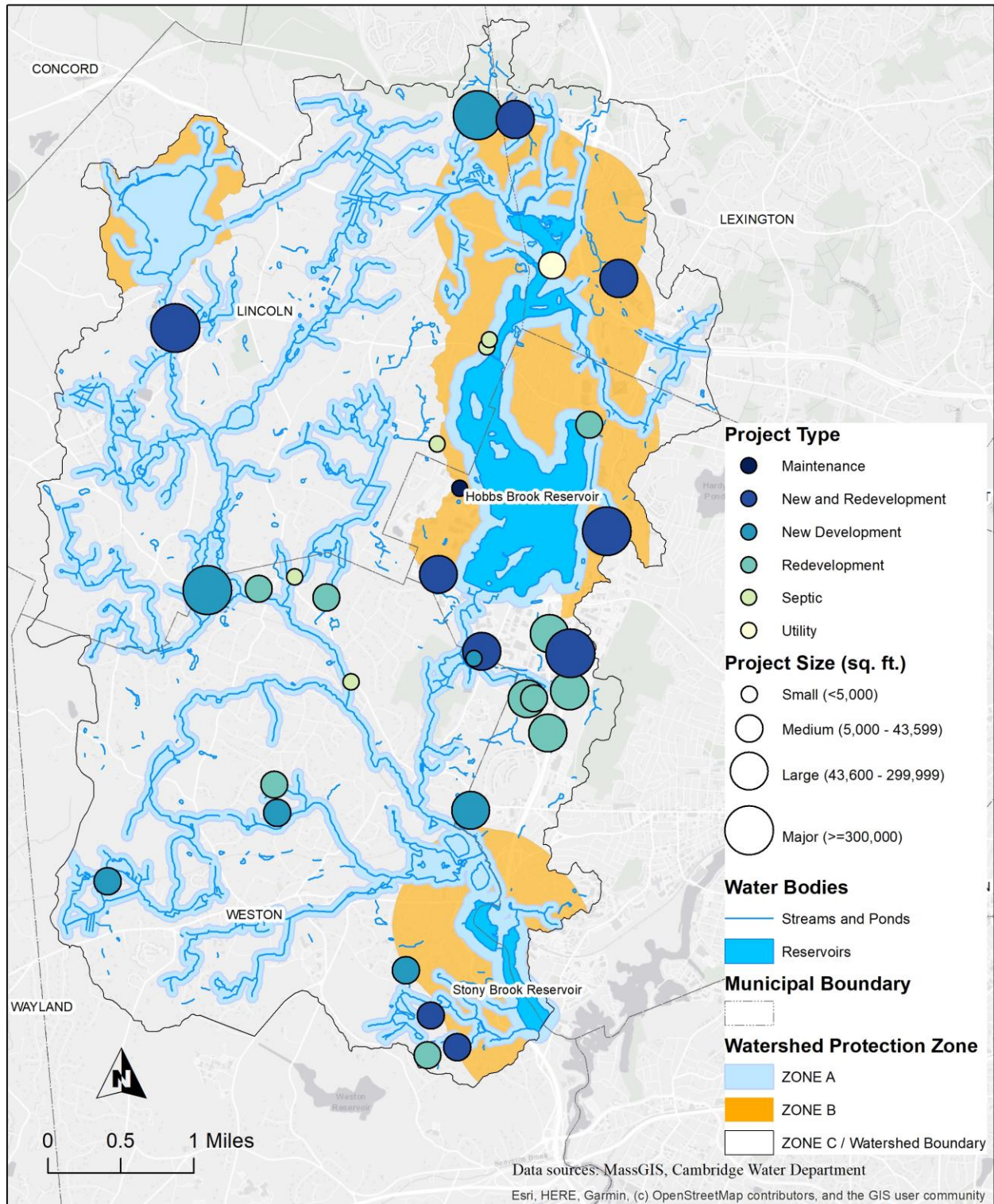


Project Size categories in sq.ft.: Small (<5000), Medium (5,000 – 43,559), Large (43,560 – 299,999), Major (>=300,000)

Zone A is 400 ft. from a reservoir or 200 ft. from a tributary to a drinking water supply. Zone B is 1/2 mile from a reservoir and Zone C encompasses all other areas in a drinking water supply watershed.



Map 2: Projects Under Construction in 2021

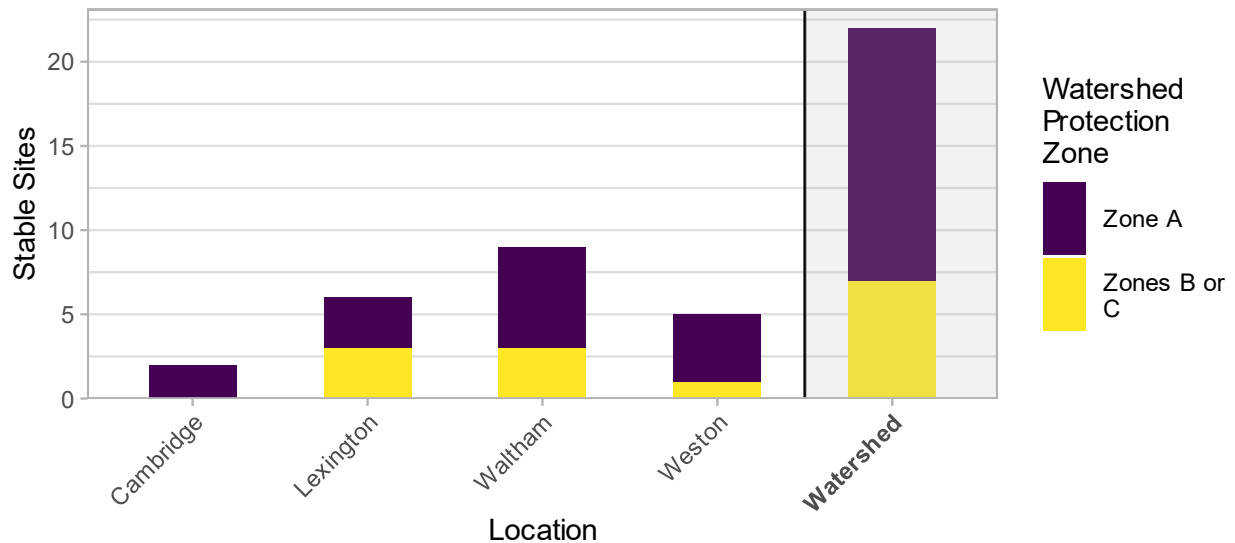


Stable Sites

In 2021, CWD performed monitoring activities for 22 sites that were categorized as stable as of December 31, 2021 and did not undergo construction in 2021. Examples of monitoring activities at these sites include inspections of projects completed in previous years to evaluate BMP performance and permit compliance, review of current or proposed maintenance activities, review of groundwater monitoring reports, and investigation of potential pollution sources. CWD's monitoring activities encompassed 15 sites in the Zone A and 7 sites in Zones B or C. The greatest number of stable site monitoring activities occurred in Waltham (9) followed by Lexington (6), Weston (5), and Cambridge (2).

See Figure 3 for a detailed summary of stable sites with monitoring activities by watershed protection zone and municipality. Map 3 displays approximate stable parcel locations for which CWD performed monitoring activities in 2021. View Appendix C for a list of stable properties for which CWD performed site monitoring activities in 2021.

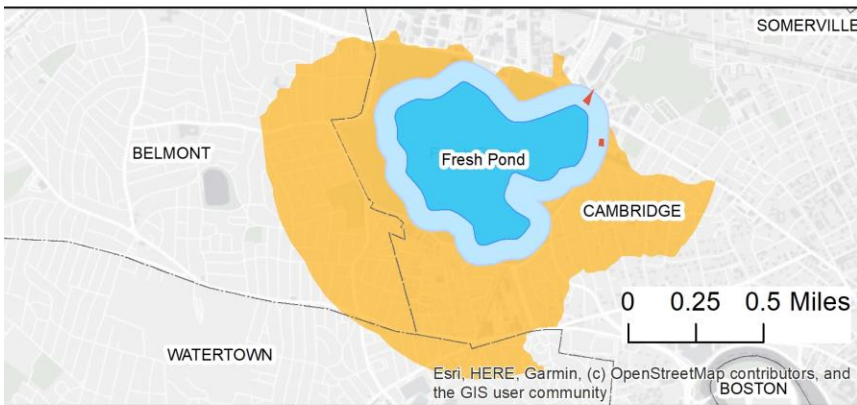
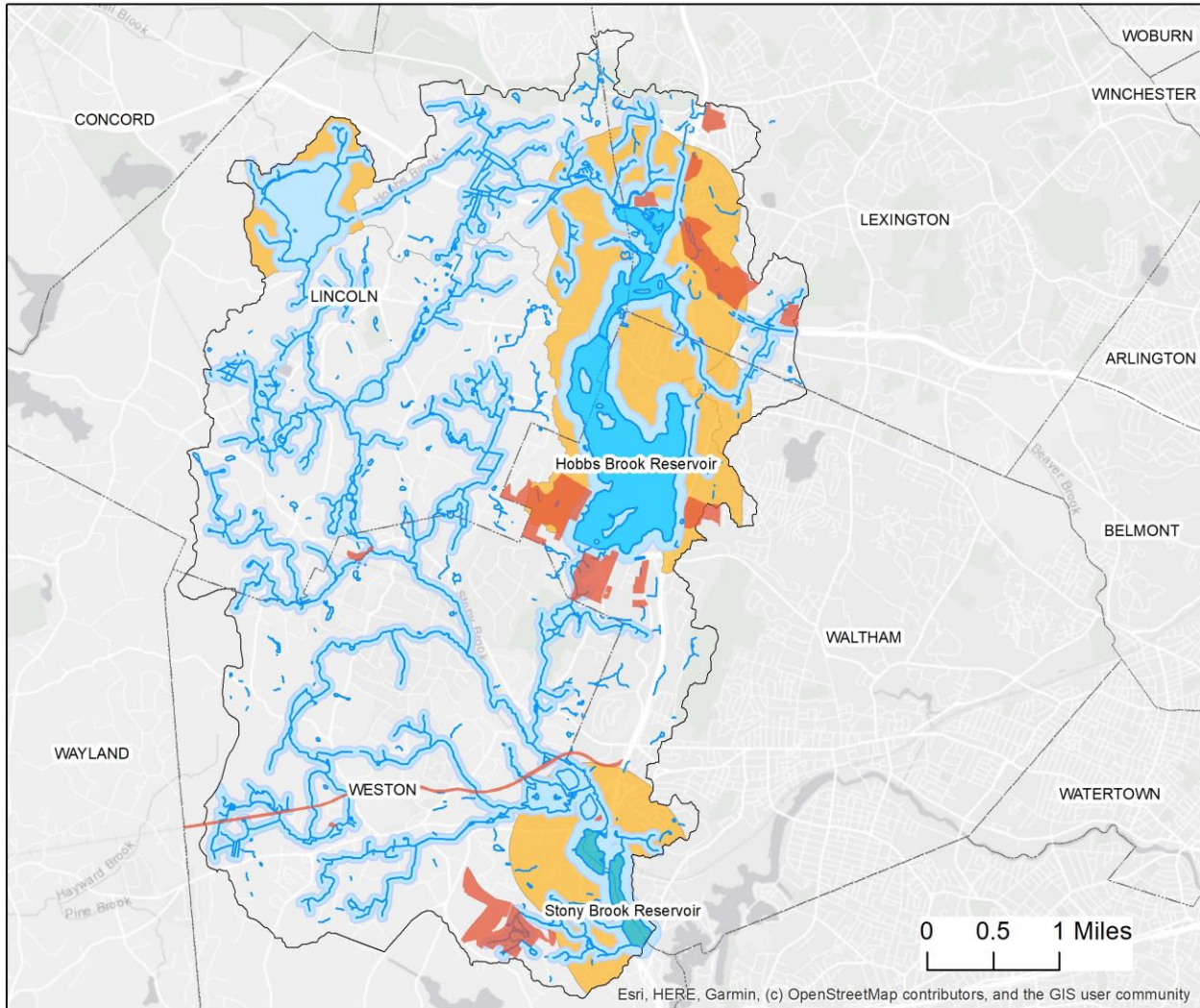
Figure 3. Stable Site Monitoring by CWD in 2021
by Watershed Protection Zone and Municipality



Zone A is 400 ft. from a reservoir or 200 ft. from a tributary to a drinking water supply. Zone B is 1/2 mile from a reservoir and Zone C encompasses all other areas in a drinking water supply watershed



Map 3: Stable Sites with Monitoring Activities in 2021



- Stable Parcels**
- Water Bodies**
 - Streams and Ponds
 - Reservoirs
- Municipal Boundary**
- Watershed Protection Zone**
 - ZONE A
 - ZONE B
 - ZONE C / Watershed Boundary

Data sources: MassGIS, Cambridge Water Department

Proposed Projects

Forty-eight (48) projects were in the planning or permitting stages of development as of December 31, 2021. Weston (21) and Waltham (13) had the most projects in planning or permitting. However, there were also 8, 4, and 2 project proposals under consideration in Lincoln, Lexington, and Cambridge, respectively. The most commonly proposed project types were New and Redevelopment (13), New Development (11), and Redevelopment (7). Other project types in the planning or permitting phases included: Septic (6), Utility (6), Restoration (2), Wastewater Treatment (2), and Aquatic Management (1). The size categories proposed for future development ranged from Small to Major, with 21 Small, 15 Medium, 7 Large, and 5 Major project proposals. See Table 1 for a breakout of proposed project types by size class.

Of the 48 potential future development projects, 31 are located within Zone A and 17 are within Zones B or C. The projects proposed within the Zone A were primarily Small (12) and Medium (10) in size, although there were 5 Large and 4 Major projects also proposed in the Zone A.

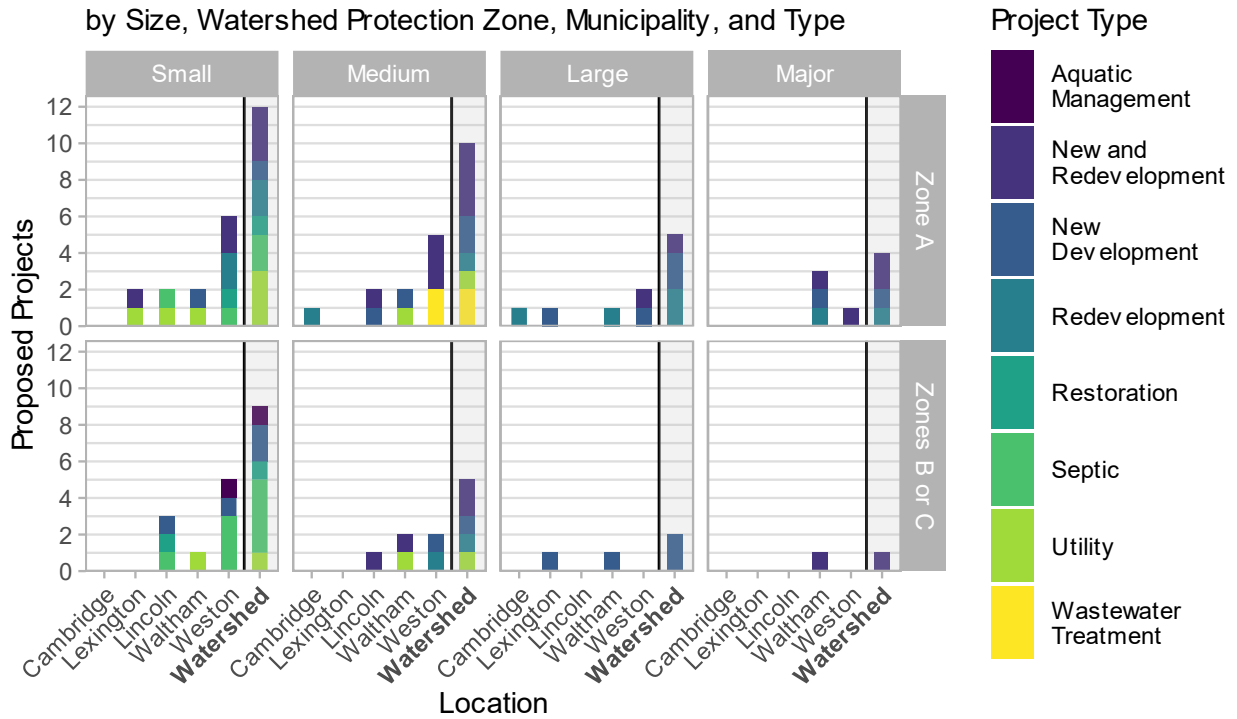
See Figure 4 for a detailed summary of proposed projects in the Cambridge watershed by size, watershed protection zone, municipality, and project type. Map 4 also displays the approximate locations by size and type for projects proposed for future development. View Appendix D for a list of project proposals which CWD reviewed or interacted with in 2021.

Table 1: Proposed Projects by Size and Type in 2021

Project Type	Size Category				Total
	Small	Medium	Large	Major	
Septic	6	0	0	0	6
Utility	4	2	0	0	6
New and Redevelopment	3	6	1	3	13
New Development	3	3	4	1	11
Redevelopment	2	2	2	1	7
Restoration	2	0	0	0	2
Aquatic Management	1	0	0	0	1
Wastewater Treatment	0	2	0	0	2
Total	21	15	7	5	48

Projects are categorized by square feet: Small (<5,000), Medium (5,000-43,599), Large (43,560-299,999), and Major (>=300,000)

Figure 4. Proposed Projects, 2021
by Size, Watershed Protection Zone, Municipality, and Type

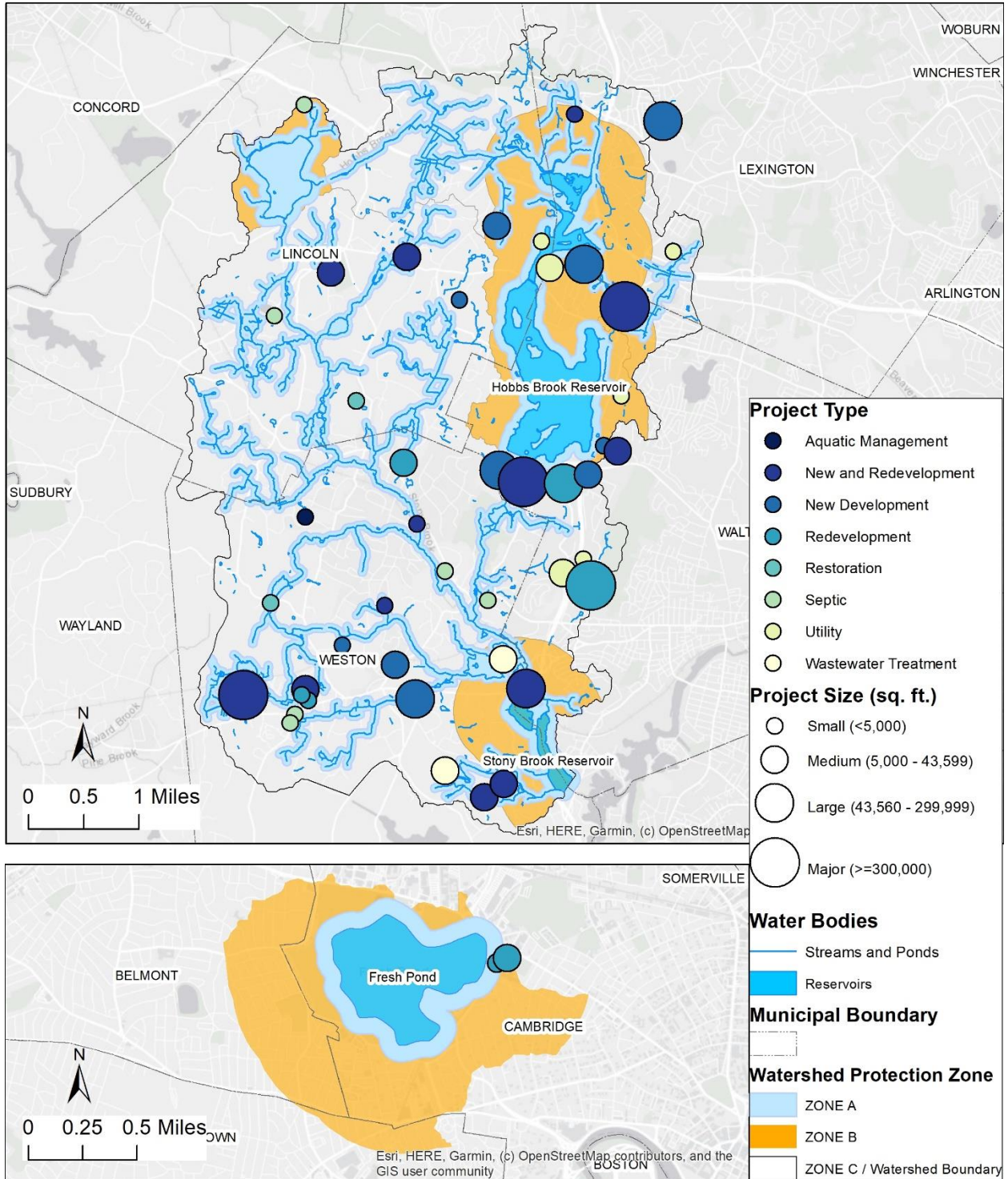


Project Size categories in sq.ft.: Small (<5000), Medium (5,000 – 43,559), Large (43,560 – 299,999), Major (>=300,000)

Zone A is 400 ft. from a reservoir or 200 ft. from a tributary to a drinking water supply. Zone B is 1/2 mile from a reservoir and Zone C encompasses all other areas in a drinking water supply watershed.



Map 4: Proposed Projects, 2021



Data sources: MassGIS, Cambridge Water Department

Project Review and Site Monitoring Communications Summary

In the course of reviewing proposed developments, CWD submitted 23 letters to state and local permitting authorities in 2021. These comment letters summarized the findings of CWD project reviews and were a mechanism by which CWD ensured that proposed development projects in the Cambridge watershed complied with regulations protecting the water supply. CWD submitted most of these letters (21) to local Conservation Commissions. Municipal Conservation Commissions are responsible for implementing the Wetlands Protection Act. As of 2019, comment letters are reviewed by the Cambridge Law Department before their submittal. In addition to submitting written letters, CWD staff attended 6 Conservation Commission hearings in 2021.

Table 2: Comment Letters Submitted by CWD in 2021 by Project Location and Regulatory Authority

Regulatory Authority	Location					Total
	Cambridge	Lexington	Lincoln	Waltham	Weston	
Conservation Commission	0	1	2	8	10	21
Town or City Council	0	0	0	1	0	1
MassDEP	0	0	0	0	1	1
Total	0	1	2	9	11	23

Table 3: Public Hearings Attended by CWD in 2021 by Project Location and Regulatory Authority

Regulatory Authority	Location					Total
	Cambridge	Lexington	Lincoln	Waltham	Weston	
Conservation Commission	0	3	0	2	1	6
Total	0	3	0	2	1	6

In 2021, CWD staff also engaged in 198 project communications to monitor development activities in the watershed (Table 4). These communications included review of project reports; in-person and virtual meetings with watershed stakeholders and property developers; and phone

and email correspondences with property managers, permit applicants, and municipal and state regulatory staff. The purpose of these communications was to:

- Discuss proposed development projects in the Cambridge watershed, deliver CWD feedback on project designs with respect to regulations pertaining to public water supplies, and discuss general watershed protection BMPs;
- Learn about updates to proposed and ongoing projects in the watershed;
- Follow-up on problems observed by or reported to CWD, such as erosion control failures or potential sources of pollution;
- Ensure that previously observed issues were resolved;
- Review monitoring reports generated by sites in the watershed, such as groundwater monitoring results from parcels regulated by the Massachusetts Contingency Plan (MCP), to check that restored and remediated areas continue to improve as expected and do not pose an immediate or significant threat to the water supply;
- Review annual site maintenance reports and Stormwater Pollution Prevention Plan (SWPPP) reports generated by sites to confirm that site management and construction practices did not imperil the water supply.

Table 4: CWD Site Monitoring Communications in 2021 by Location and Type

Communication Type	Location					Total
	Cambridge	Lexington	Lincoln	Waltham	Weston	
Phone/Email/Report	5	29	33	59	60	186
Meeting	0	6	0	4	2	12
Total	5	35	33	63	62	198

Site Inspections

CWD performed 83 site inspections in 2021, 46 of which were on active construction sites (Table 5). However, CWD also completed 37 inspections of stable sites to check that sites were being managed appropriately (Table 5). CWD identified 22 problems during 2021, 64% of which were fixed by the end of the year (Table 6). Most issues were minor erosion or sedimentation control failures at construction sites and were resolved quickly. The unresolved issues mostly involve long term efforts to implement low-chloride deicing strategies on parcels throughout the watershed. In addition to the inspections summarized below, CWD employs two full-time watershed caretakers who regularly patrol the watershed to identify activities that may require further CWD investigation.

Table 5: CWD Site Inspections in 2021 by Location and Type

Inspection Type	Location					Total
	Cambridge	Lexington	Lincoln	Waltham	Weston	
Construction	0	9	8	16	13	46
Stable	0	9	2	19	7	37
Total	0	18	10	35	20	83

Table 6: Issues Identified During Site Inspections in 2021 by Location

Town	Site Inspection Totals			
	Total	Issues Identified	Issues Resolved	% of Issues Resolved
Cambridge	0	0	0	--
Lexington	18	6	4	67%
Lincoln	10	1	1	100%
Waltham	35	15	9	60%
Weston	20	0	0	--
Total	83	22	14	64%

Appendix A

Table 1A. Projects Completed Between January 1, 2021 and December 31, 2021

Project Information						Number of Monitoring Activities by Type ^a		
Town	Address	Project Name	Zone ^b	Size ^c	Type	I ^d	H/C ^e	C ^f
Lexington	Eversource ROW 8-3 Lincoln St to Marrett Rd	New Conduit Installation with HDD	A	Large	Utility	0	0	3
Lexington	Eversource ROW 8-3 Tracer Ln to Marrett Rd	Vegetation Maintenance	A	Large	Utility	0	0	0
Lincoln	115 Trapelo Road	Replacement Septic System	A	Small	Septic	0	0	1
Waltham	200 Smith St	Beaver Dam Removal	A	Small	Maintenance	0	0	1
Waltham	80 Second Ave	Utility Upgrade and Pavement Sealing and Repainting	A	Large	Redevelopment	2	0	4
Waltham	900 Winter St	Eversource Duct Bank Installation	A	Medium	Utility	0	0	1
Weston	79 Drabbington Way	New Shed in Riverfront Area at Single Family Home	A	Small	New Development	0	0	0

Table 1A. Projects Completed Between January 1, 2021 and December 31, 2021

Project Information						Number of Monitoring Activities by Type ^a		
Town	Address	Project Name	Zone ^b	Size ^c	Type	I ^d	H/C ^e	C ^f
Weston	Boston Post Road (Fiske Lane to School St); Church St (Boston Post Road to Town House Road); Town House Road	Weston Town Center Improvement Project	A	Large	Redevelopment	1	0	0
Weston	Town of Weston	5 Year Vegetation Management Plan (VMP) (2017-2021)	A	Small	ROW Spraying	0	0	4
Weston	18 Gate House Lane	Well Installation	A	Small	Utility	0	0	0
Weston	71 Concord Road	New Garage and After-the-fact Septic System	C	Medium	New and Redevelopment	1	0	0

^aHearings for which CWD both attended and submitted written comments were tallied as a single count

^bZone A is 400 ft. from a reservoir or 200 ft. from a tributary to a drinking water supply. Zone B is 1/2 mile from a reservoir and Zone C encompasses all other areas in a drinking water supply watershed.

^cProject Size categories in sq.ft.: Small (<5000), Medium (5,000 – 43,559), Large (43,560 – 299,999), Major (>=300,000)

^dI = Inspections

^eH/C = Hearings attended and/or comments submitted to regulatory bodies

^fC = Project communications

Appendix B

Table 1B. Projects Under Construction Between January 1, 2021 and December 31, 2021

Project Information						Number of Monitoring Activities by Type ^a		
Town	Address	Project Name	Zone ^b	Size ^c	Type	I ^d	H/C ^e	C ^f
Lexington	758 Marrett Road	New sports complex	A	Large	New and Redevelopment	4	0	3
Lexington	Route 2 Eversource / MassDOT	New underground electric conduit	A	Medium	Utility	0	0	1
Lexington	200 - 500 Shire/Patriot Way	400 Shire Way Building Addition	B	Large	New and Redevelopment	3	0	9
Lexington	200 - 500 Shire/Patriot Way	500 Shireway Repave Parking Lot	B	Large	Redevelopment	2	2	6
Lincoln	1-8 Ballfield Road	Brooks and Smith Schools Renovation	A	Major	New and Redevelopment	4	0	12
Lincoln	176 Trapelo Rd	Replacement septic system	A	Small	Septic	0	0	1
Lincoln	73 Old County Road	Septic System Replacement	A	Small	Septic	1	0	2
Lincoln	99 Winter Street	Replacement Septic System	A	Small	Septic	0	0	3
Lincoln	758 Marrett Rd	Construction of New School and Athletic Complex	B	Major	New Development	3	0	7
Waltham	950-1100 Winter St	Removal of 6-8" of Water Quality Basin Berm	A	Small	Maintenance	0	0	1

Table 1B. Projects Under Construction Between January 1, 2021 and December 31, 2021

Project Information						Number of Monitoring Activities by Type ^a		
Town	Address	Project Name	Zone ^b	Size ^c	Type	I ^d	H/C ^e	C ^f
Waltham	195 West Street	Parking Expansion and Building Renovation	A	Large	New and Redevelopment	4	1	6
Waltham	1560 Trapelo Rd	Fitness Center and Café/Patio Update	A	Medium	Redevelopment	0	0	0
Waltham	80 Second Ave	Floor and Décor Former Coca Cola Plant Redevelopment	A	Large	Redevelopment	1	0	0
Waltham	225 Wyman St	Office park redevelopment and parking garage	B	Major	New and Redevelopment	0	0	0
Waltham	300 Third Ave	Office Building and Garage Redevelopment	B	Large	Redevelopment	1	0	1
Waltham	130/180 Third Ave	Office Park Redevelopment	C	Major	New and Redevelopment	6	0	6
Waltham	840 Winter Street	Repositioning Project	C	Large	New and Redevelopment	1	0	2
Waltham	1432 Main Street	Wetland Violation	C	Large	New Development	1	0	3
Waltham	341 Second Ave	Broadstone Watch City Condo Development	C	Large	Redevelopment	1	0	9
Waltham	305 Second Ave	MIM - Medical Marijuana Dispensary	C	Medium	Redevelopment	2	0	0

Table 1B. Projects Under Construction Between January 1, 2021 and December 31, 2021

Project Information						Number of Monitoring Activities by Type ^a		
Town	Address	Project Name	Zone ^b	Size ^c	Type	I ^d	H/C ^e	C ^f
Waltham	235 Bear Hill Road	Repave and Reconfigure Parking Lot	C	Large	Redevelopment	0	0	0
Weston	104 Meadowbrook Road	New Single-Family Home and Septic Replacement	A	Medium	New and Redevelopment	2	0	0
Weston	180 Meadowbrook Road	Single Family Home and Septic System Rebuild	A	Medium	New and Redevelopment	0	0	0
Weston	52 Gun Club Lane	New Single-Family Home and Driveway	A	Medium	New Development	0	0	1
Weston	200 Lexington Street	Single-Family Home Additions	A	Small	New Development	1	0	1
Weston	146 Conant Road	Replacement Single Family Home	A	Medium	Redevelopment	2	0	0
Weston	416 Conant Road	Septic System Upgrade	A	Medium	Redevelopment	0	0	0
Weston	506 North Ave	Rebuild Single Family Home	A	Medium	Redevelopment	1	1	1
Weston	449 Old North Ave	Septic System Repair	A	Small	Septic	1	1	3
Weston	266 North Ave	Septic System Replacement	A	Small	Septic	0	0	1
Weston	45 Hidden Rd	New Single-Family Home	B	Medium	New Development	0	0	0

Table 1B. Projects Under Construction Between January 1, 2021 and December 31, 2021

Project Information						Number of Monitoring Activities by Type ^a		
Town	Address	Project Name	Zone ^b	Size ^c	Type	I ^d	H/C ^e	C ^f
Weston	5 Colchester Road (0 Conant)	New Single-Family Home	C	Medium	New Development	1	0	0
Weston	576 North Ave	Flexible Subdivision	C	Major	New Development	3	1	1
Weston	40 Cart Path Road	Single-Family Home Rebuild and New Septic	C	Medium	Redevelopment	1	0	1
Weston	416 Conant Road	New Single-Family Home and Septic System	C	Medium	Redevelopment	1	1	0

^aHearings for which CWD both attended and submitted written comments were tallied as a single count

^bZone A is 400 ft. from a reservoir or 200 ft. from a tributary to a drinking water supply. Zone B is 1/2 mile from a reservoir and Zone C encompasses all other areas in a drinking water supply watershed.

^cProject Size categories in sq.ft.: Small (<5000), Medium (5,000 – 43,559), Large (43,560 – 299,999), Major (>=300,000)

^dI = Inspections

^eH/C = Hearings attended and/or comments submitted to regulatory bodies

^fC = Project communications

Appendix C

Table 1C. Stable Sites Monitored by CWD Between January 1, 2021 and December 31, 2021

Site Information			Number of Monitoring Activities by Type ^a		
Town	Address	Zone ^b	I ^c	H/C ^d	C ^e
Cambridge	515 Concord Ave	A	0	0	2
Cambridge	343 Fresh Pond Parkway	A	0	0	2
Lexington	443 Lincoln St	A	2	0	5
Lexington	435 and 439 Lincoln St	A	1	0	0
Lexington	65 Hayden Ave	A	1	0	0
Lexington	I-95 Rest Stop Northbound, near exit 30A	B	0	0	6
Lexington	7 Crosby Road	C	1	1	0
Lexington	200 - 500 Shire/Patriot Way	C	2	0	1
Waltham	900 Winter St	A	1	0	0
Waltham	71 Second Ave	A	1	0	0
Waltham	135 Second Ave	A	1	0	0
Waltham	City of Waltham	A	0	0	1
Waltham	175 Wyman St	A	0	0	2
Waltham	40, 44, 50, 60 Sylvan Road	A	0	0	1
Waltham	830 Winter St	B	1	0	0
Waltham	860 Winter Street	B	1	0	0
Waltham	124-132-144 West Street	C	1	0	0
Weston	275 Meadowbrook Road	A	0	0	1
Weston	Central Mass Rail Trail / Eversource ROW 8-2 Access Road (Weston)	A	0	0	3
Weston	84 Boston Post Road	A	0	0	2
Weston	15 Warren Place	A	1	0	0
Weston	560 North Ave	C	0	1	2

Table 1C. Stable Sites Monitored by CWD Between January 1, 2021 and December 31, 2021

Site Information			Number of Monitoring Activities by Type ^a		
Town	Address	Zone ^b	I ^c	H/C ^d	C ^e

^aHearings for which CWD both attended and submitted written comments were tallied as a single count

^bZone A is 400 ft. from a reservoir or 200 ft. from a tributary to a drinking water supply. Zone B is 1/2 mile from a reservoir and Zone C encompasses all other areas in a drinking water supply watershed.

^cI = Inspections

^dH/C = Hearings attended and/or comments submitted to regulatory bodies

^eC = Project communications

Appendix D

Table 1D. Projects in Planning or Permitting Between January 1, 2021 and December 31, 2021

Project Information						Number of Monitoring Activities by Type ^a		
Town	Address	Project Name	Zone ^b	Size ^c	Type	I ^d	H/C ^e	C ^f
Cambridge	343 Fresh Pond Parkway	Gas tank and dispenser replacements	A	Medium	Redevelopment	1	0	0
Cambridge	406 Concord Avenue	Parking Lot Rehabilitation and Building Modifications	A	Large	Redevelopment	0	0	1
Lexington	1 - 5 Forbes Road	Hobbs Brook Bridge and Trail Connector at 1 Cranberry Hill and 1,3, 5 Forbes Rd	A	Small	New and Redevelopment	0	0	1
Lexington	Tracer Ln	Solar Farm	A	Large	New Development	0	0	0
Lexington	95 Hayden Ave	Sewer Pumping Station Upgrade	A	Small	Utility	0	1	0
Lexington	15-17 Fairland St and 185 Lincoln St	14-unit Residential Subdivision	C	Large	New Development	1	0	0
Lincoln	58 Trapelo Rd	Lot subdivision	A	Medium	New and Redevelopment	0	0	0
Lincoln	69 Page Road	Pool, Pool House, and New Sewer/Septic	A	Medium	New Development	1	0	0

Table 1D. Projects in Planning or Permitting Between January 1, 2021 and December 31, 2021

Project Information						Number of Monitoring Activities by Type ^a		
Town	Address	Project Name	Zone ^b	Size ^c	Type	I ^d	H/C ^e	C ^f
Lincoln	10 Deer Haven Road	Replacement Septic System	A	Small	Septic	0	0	1
Lincoln	Old County Road J-3 Pipeline	J-3 Pipeline Cathodic Protection Project	A	Small	Utility	0	0	0
Lincoln	22 Lincoln Road	Single Family Home Addition, Deck, Septic Replacement, and Repaving	C	Medium	New and Redevelopment	0	0	3
Lincoln	15 Stratford Way	New Pool in Yard	C	Small	New Development	1	1	2
Lincoln	145 Weston Road	Invasive Species Removal Project	C	Small	Restoration	0	0	1
Lincoln	100 Lincoln Road	Septic System Replacement	C	Small	Septic	0	1	0
Waltham	200 Smith St	Building Expansion, Parking Expansion, and Parking Garage	A	Major	New and Redevelopment	1	2	2
Waltham	I-95 and Third Ave	Southbound On Ramp from Winter St to I-95 Widening	A	Medium	New Development	0	0	1

Table 1D. Projects in Planning or Permitting Between January 1, 2021 and December 31, 2021

Project Information						Number of Monitoring Activities by Type ^a		
Town	Address	Project Name	Zone ^b	Size ^c	Type	I ^d	H/C ^e	C ^f
Waltham	81 Wyman St	Tree Cutting in/near Water Quality Basins	A	Small	New Development	0	1	1
Waltham	40, 44, 50, 60 Sylvan Road	New Parking Garage and Office Buildings	A	Major	New Development	0	1	1
Waltham	71 Second Ave	Costco Fuel Station	A	Large	Redevelopment	0	0	1
Waltham	1265 Main Street	Phase II	A	Major	Redevelopment	1	0	3
Waltham	Tower Road, Bear Hill Road, and Second Ave Pump Station	Sewer Work	A	Medium	Utility	0	0	0
Waltham	303 Wyman Street	Tree Pruning	A	Small	Utility	0	1	1
Waltham	305 Winter St	Residential 40B Development	B	Medium	New and Redevelopment	1	0	1
Waltham	Tower Rd and Wyman St	Vinyl Tape Replacement	B	Small	Utility	0	0	3
Waltham	40, 44, 50, 60 Sylvan Road	New Parking Garage and Office Buildings	C	Major	New and Redevelopment	0	0	3
Waltham	35 Gatehouse Drive	New Parking Lot	C	Large	New Development	0	2	4

Table 1D. Projects in Planning or Permitting Between January 1, 2021 and December 31, 2021

Project Information						Number of Monitoring Activities by Type ^a		
Town	Address	Project Name	Zone ^b	Size ^c	Type	I ^d	H/C ^e	C ^f
Waltham	38 Wimbledon Circle	Pump station improvement project	C	Medium	Utility	1	1	2
Weston	751 - 761 Boston Post Road	Modera Weston - Friendly 40B development	A	Major	New and Redevelopment	0	0	1
Weston	104 Boston Post Road	40B Apartment Complex	A	Large	New and Redevelopment	0	0	0
Weston	100 Montvale Road	Single Family Home Addition and Driveway Expansion	A	Small	New and Redevelopment	1	1	1
Weston	15 Warren Place	New Garage and Master Suite	A	Medium	New and Redevelopment	0	0	4
Weston	272 North Ave	New Garage and Gravel Driveway	A	Small	New and Redevelopment	1	0	1
Weston	31 Green Lane	New Single-Family Home and Septic System	A	Medium	New and Redevelopment	0	1	6
Weston	51 Cedar Road	Single Family Home Addition, Landscaping, Septic Replacement	A	Medium	New and Redevelopment	0	0	5

Table 1D. Projects in Planning or Permitting Between January 1, 2021 and December 31, 2021

Project Information						Number of Monitoring Activities by Type ^a		
Town	Address	Project Name	Zone ^b	Size ^c	Type	I ^d	H/C ^e	C ^f
Weston	0 Wellesley Street	6-unit Affordable Housing Development	A	Large	New Development	0	1	2
Weston	661 Boston Post Road	Single Family Home Septic System Replacement	A	Small	Redevelopment	0	0	1
Weston	5 Warren Place	Addition to Single Family Home	A	Small	Redevelopment	0	0	1
Weston	Concord Rd at Cherry Brook	Concord Rd Culvert Replacement	A	Small	Restoration	0	0	1
Weston	694 Boston Post Road	Septic System Replacement	A	Small	Septic	0	0	2
Weston	133 Boston Post Road	Weston Corporate Campus WWTF	A	Medium	Wastewater Treatment	0	1	2
Weston	275 Meadowbrook Road	Construction of New Wastewater Treatment Facility	A	Medium	Wastewater Treatment	0	1	4
Weston	14 Pollywog Lane	Aquatic Management Plan	C	Small	Aquatic Management	0	0	2
Weston	36 Church St	New Residential Parcel	C	Medium	New Development	0	0	0

Table 1D. Projects in Planning or Permitting Between January 1, 2021 and December 31, 2021

Project Information						Number of Monitoring Activities by Type ^a		
Town	Address	Project Name	Zone ^b	Size ^c	Type	I ^d	H/C ^e	C ^f
Weston	33 Laxfield Road	Single-Family Home Addition and New Porch	C	Small	New Development	1	1	1
Weston	416 Conant Road	New Single-Family Home and Septic System	C	Medium	Redevelopment	1	1	0
Weston	176 North Ave	Septic System Replacement	C	Small	Septic	0	0	3
Weston	12 Highland Street	Septic System Replacement	C	Small	Septic	0	1	1
Weston	60 North Ave	Septic System Replacement	C	Small	Septic	0	0	2

^aHearings for which CWD both attended and submitted written comments were tallied as a single count

^bZone A is 400 ft. from a reservoir or 200 ft. from a tributary to a drinking water supply. Zone B is 1/2 mile from a reservoir and Zone C encompasses all other areas in a drinking water supply watershed.

^cProject Size categories in sq.ft.: Small (<5000), Medium (5,000 – 43,559), Large (43,560 – 299,999), Major (>=300,000)

^dI = Inspections

^eH/C = Hearings attended and/or comments submitted to regulatory bodies

^fC = Project communications