

Port Infrastructure Project Working Group

Meeting #6 | September 13, 2022



CAMBRIDGE
DEPARTMENT
OF PUBLIC
**THE
WORKS**

Welcome!

Remote Participation Instructions

Working Group Members

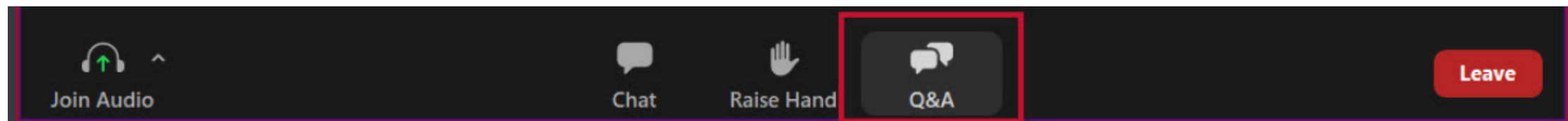
- Participants may speak and show webcam video
- Use “Raise Hand” button during discussion
- Mute your microphone when others are speaking

Members of the Public

- Attendees are muted and cannot show video
- Can write questions and ask for assistance in the Q&A window
- Questions can be submitted at any time and will be addressed, as time allows, after working group member discussion, as well as during public comment

Welcome
Working Group Members!

As you join, please test your mic/video and say hello.



Meeting Goals

1. Share project construction updates
2. Provide an update on the artist selection
3. Discuss Clement Morgan Park improvements and introduce landscape architecture team
4. Share updates and get feedback on fall community engagement activities
5. Review resources with Working Group members to share information and start conversations with neighbors



Working Group Members

Tabatha Danyow

Kessen Green

Rev. Dr. Ellis Washington

Marian Darlington-Hope

Ming-Tai Huh

Paul Weaver

Troy Ellerbee

Raghu Krishnan

Divya Errabelli

Idony Lisle

Colin Fleming

Jack O'Hearn

Randa Ghattas

James Pierre



Port Infrastructure Project | WORKING GROUP

Meeting #6 | September 13, 2022



Project Team

City of Cambridge

- **Jerry Friedman**
Project Manager/Supervising Engineer
- **Kathy Watkins**
City Engineer/Assistant Commissioner
- **Kate Riley**
Community Relations Manager
- **Gary Chan**
Neighborhood Planner
- **Matt Nelson**
Assistant to the City Manager
- **Lillian Hsu**, Director of Public Art
- **Hilary Zelson**, Public Art Administrator
- **Cambridge Community Corps**

Consultant Team

- Kleinfelder, Inc. - Project lead and engineering
- Consensus Building Institute (CBI) - Facilitation and community engagement
- Stantec – Landscape architecture

Agenda

- 11:00am Welcome
- 11:10am Project updates
- 11:20am Artist selection for public art project
- 11:30am Clement Morgan and Anthony Paolillo Tot Lot
- 11:55am Spring/Summer community engagement recap
- 12:05am Feedback on Fall engagement plans
- 12:30pm Public comment
- 12:40pm Upcoming events and next steps
- 1pm Adjourn

Project Construction Updates

- **Harvard Street Water Main Replacement**
 - Windsor to Portland – September 2022 to November 2022
 - Prospect to Windsor – April 2023 to Nov 2023
- **Harvard Street Sewer/Drain Rehabilitation**
 - Prospect to Portland – Nov 2022 to Nov 2023
- **Eversource Electric New Electrical Conduit**
 - Harvard Street (Prospect to Portland) – Fall 2022 to Winter 2023
- **Eversource Gas Main Replacement**
 - Columbia Street – to be completed Fall 2022
 - Windsor Street – Winter/Spring 2023

Port Project Artist Selection

- The Port Project public art selection committee has selected artist and educator **Marlon Forrester**.
- Marlon has had extensive experience working with youth and young adults including a decade with Boston Public Schools.
- He was born in Guyana and grew up in Dorchester.
- More information about Marlon can be found on his website: www.marlonforrester.com



Port Project Artist Selection

- Marlon will be commissioned under the percent-for-art program.
- The Community Art Center and Cambridge Arts are partnering to implement the project that will respond to, and be for, the Port neighborhood.
- Marlon Forrester will work closely with Jack O’Hearn and the Public Art Teen Program at CAC to develop a design proposal with the students and then carry the project through design development, fabrication, and installation phases.
- He will begin working with the students at the start of their program in September 2022.



Clement Morgan Park and Anthony Paolillo Tot Lot



Park Design Team and Process

Park process overview:

- Gathering community input
- Design process; community guidance and refinement
- Construction after streets work

Welcome Stantec Landscape Architecture team:

- Shane Lougee, RLA – Project Manger
- Josh Atkinson, Associate, Landscape Architect – Sports and Athletic Facilities
- Adam Fearing, Project Landscape Designer



What We've Heard about the Park So Far

Things People Love:

- Basketball courts
- Trees and green space
- Layout
- *Pole Climbers* sculpture



Suggested Improvements:

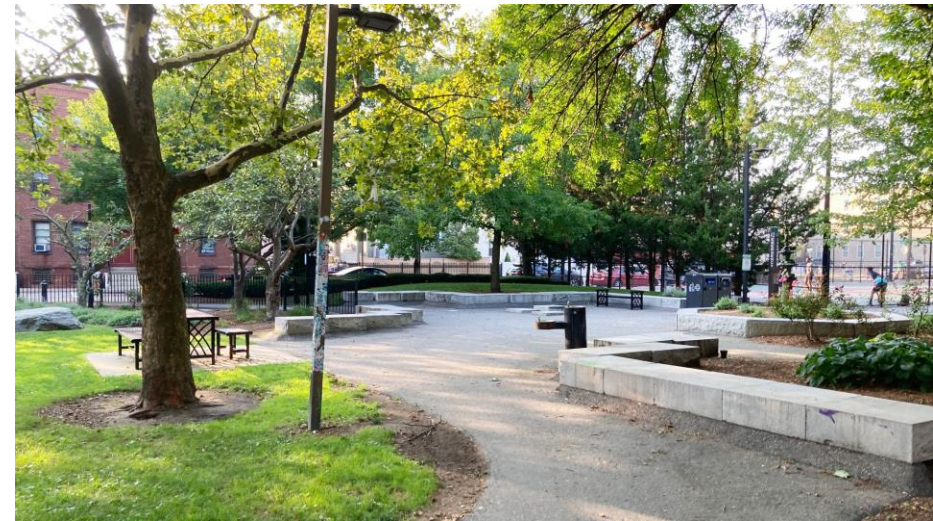
- Additional seating
- New playground equipment
- Public art that reflects history
- Landscaping
- Improved pedestrian lighting
- Re-aligned pathways
- Green infrastructure
- More things that attract adults like exercise equipment
- Public toilet

We Want to Hear From You About:

- What you're hearing from your neighbors about the Park
 - What's working well? What could be better?
- What areas of the Park are most important to maintain access to during construction?
 - Concerns regarding the basketball court being out of commission – timing and duration?
- Are there specific elements, such as trees, benches or others that are most important to preserve/protect?



Port Infrastructure Project | WORKING GROUP



Spring/Summer Community Engagement Recap



Outreach Events and Activities

April & May

Outdoor “Pop-Ups”:
Table discussions to get community feedback on surface infrastructure

Check-in meetings with community groups

Neighborhood Walk to identify issues and opportunities

June

Arts in the Park at Clement Morgan Park

July

Screen on the Green

September

Port Pride Day

Arts in the Park

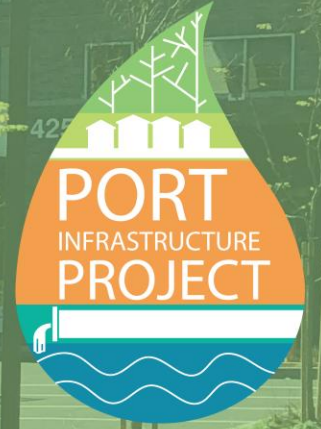


Questions for WG Members

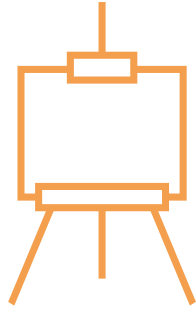
- How did these events go from your perspective?
 - Are we missing any key connection and outreach points?
- Were the resources we created to help support you in your role useful/used?
 - What other resources or communications would be helpful going forward?



Fall 2022 Outreach



Upcoming Events



Street Design & Open Space Open House

Tuesday, October 25, 2022 | 5:30-8pm
Cambridge Community Arts Center



Neighborhood Walk

Saturday, November 5, 2022 | 10:00am-12:00pm
Clement Morgan Park



Open House Goals and Format

Goals:

- Raise awareness and share project information with residents
- Discuss street design options in detail with community members
- Gather feedback on street designs and open space improvements
- Inform community members about additional input opportunities

Format:

- Open-house style with nine different "stations"
- Two 10-minute presentations at 6pm and 7pm
- Food and kids' activities provided

Open House Stations

TELL US YOUR PRIORITIES

Table 1
Shared Streets

Table 2
Clement Morgan
Park/Anthony Paolillo
Tot Lot

Table 3
Public Art

SHARE FEEDBACK ON STREETS

Table 4
Roll plans:
Harvard, Washington,
Worcester, Suffolk

Table 5
Roll plans:
Pine, Cherry,
Columbia, Windsor

Table 6
Roll plans:
Essex, Norfolk, Bishop
Allen

LEARN MORE

Table 7
Trees

Table 8
Stormwater*

Table 9
Project Info*

*Activities for Kids

Tables 1-3

TELL US YOUR PRIORITIES

Table 1 Shared Streets

- What is a shared street, what are their benefits, and why they are being considered
- *What about Shared Streets appeals to you or concerns you?*

Table 2 Clement Morgan Park/Anthony Paolillo Tot Lot

- Feedback we have heard so far
- *What improvements are most exciting or important to you?*

Table 3 Public Art

- Artist selection and public art process
- *What kinds of things you would like to see honored or celebrated with public art in the Port?*

Tables 4-6

SHARE FEEDBACK ON STREETS

Table 4
Roll plans:
Harvard, Washington,
Worcester, Suffolk

- Roll plans with proposed improvements
- *For general feedback, add a sticky*
- *For specific feedback write directly on the roll plan*

Table 5
Roll plans:
Pine, Cherry,
Columbia, Windsor

- Roll plans with proposed improvements
- *For general feedback, add a sticky*
- *For specific feedback write directly on the roll plan*

Table 6
Roll plans:
Essex, Norfolk,
Bishop Allen

- Roll plans with proposed improvements
- *For general feedback, add a sticky*
- *For specific feedback write directly on the roll plan*

Tables 6-9

LEARN MORE ABOUT THE PROJECT & GOALS

Table 7 Trees

- Why trees are important, importance of tree pits and their placement, plantings on private property, etc.

Table 8 Stormwater*

- Information board about flooding in the Port, stormwater and sewer separation
- Stormwater model



Table 9 Project Info*

- Survey QR code, email sign up, project timeline, upcoming construction
- Plastic pipe kids' activity

*Activities for Kids

Feedback on Open House

- What suggestions do you have for us about the structure?
- Can you invite folks in your network and help us advertise the meeting?
- Help us make the Open House a success!
 - Feedback today
 - Outreach
 - Food options?



Public Comment



For More Information:
www.cambridgema.gov/theport

Jerry Friedman, Supervising Engineer
jfriedman@cambridgema.gov | 617.349.9720

Kate Riley, Community Relations
kriley@cambridgema.gov | 617.349.4870

**COMMENTS &
QUESTIONS?**

