

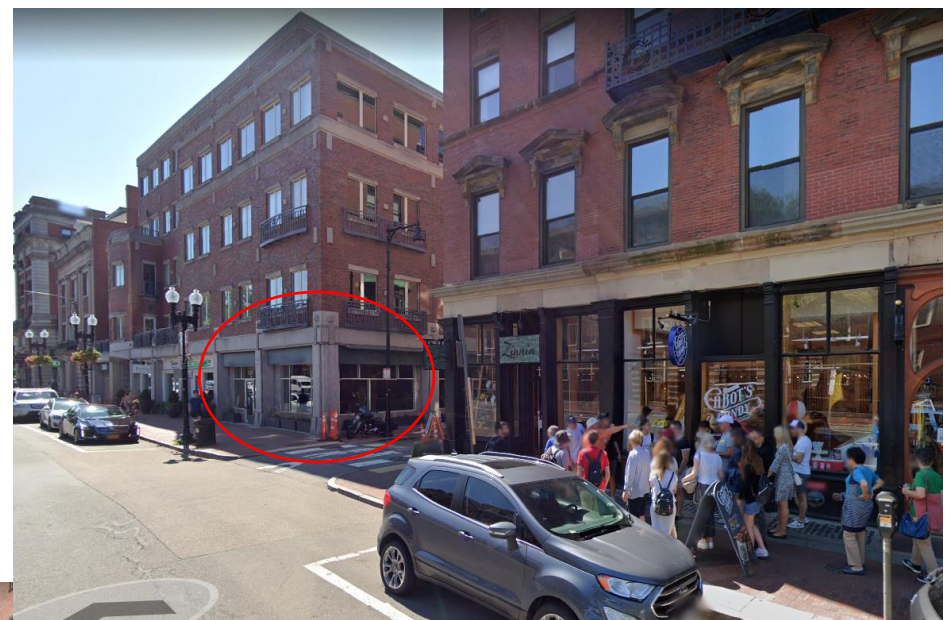
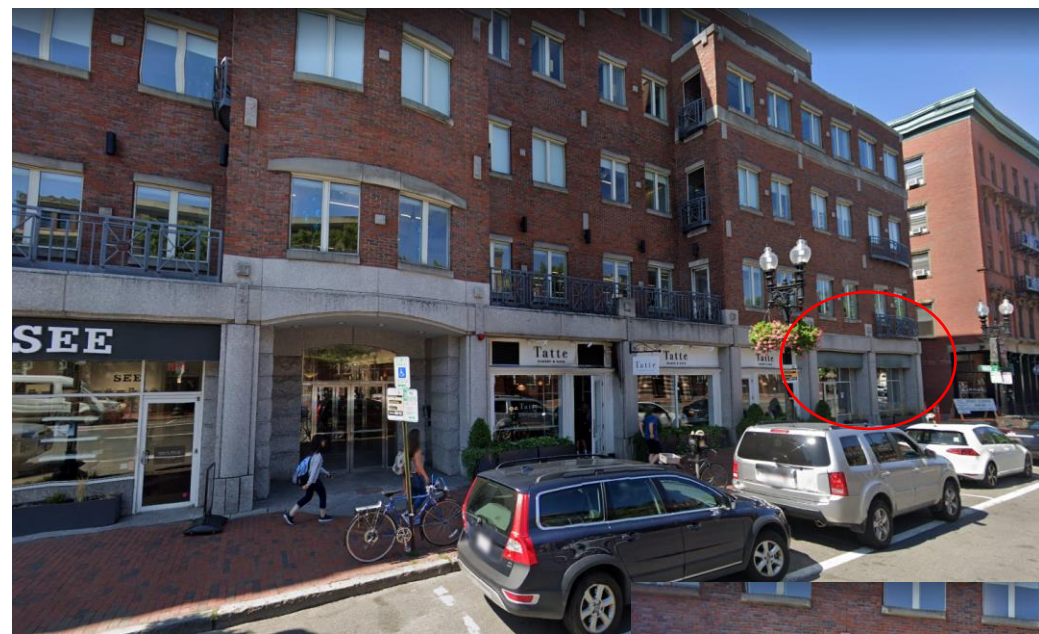


**1290 Massachusetts Avenue, Cambridge, MA  
Harvard Square Advisory Committee Meeting  
April 29, 2021**

# Proposed Location



# Neighborhood Context- Existing Condition



# Existing Conditions and Proposed Design

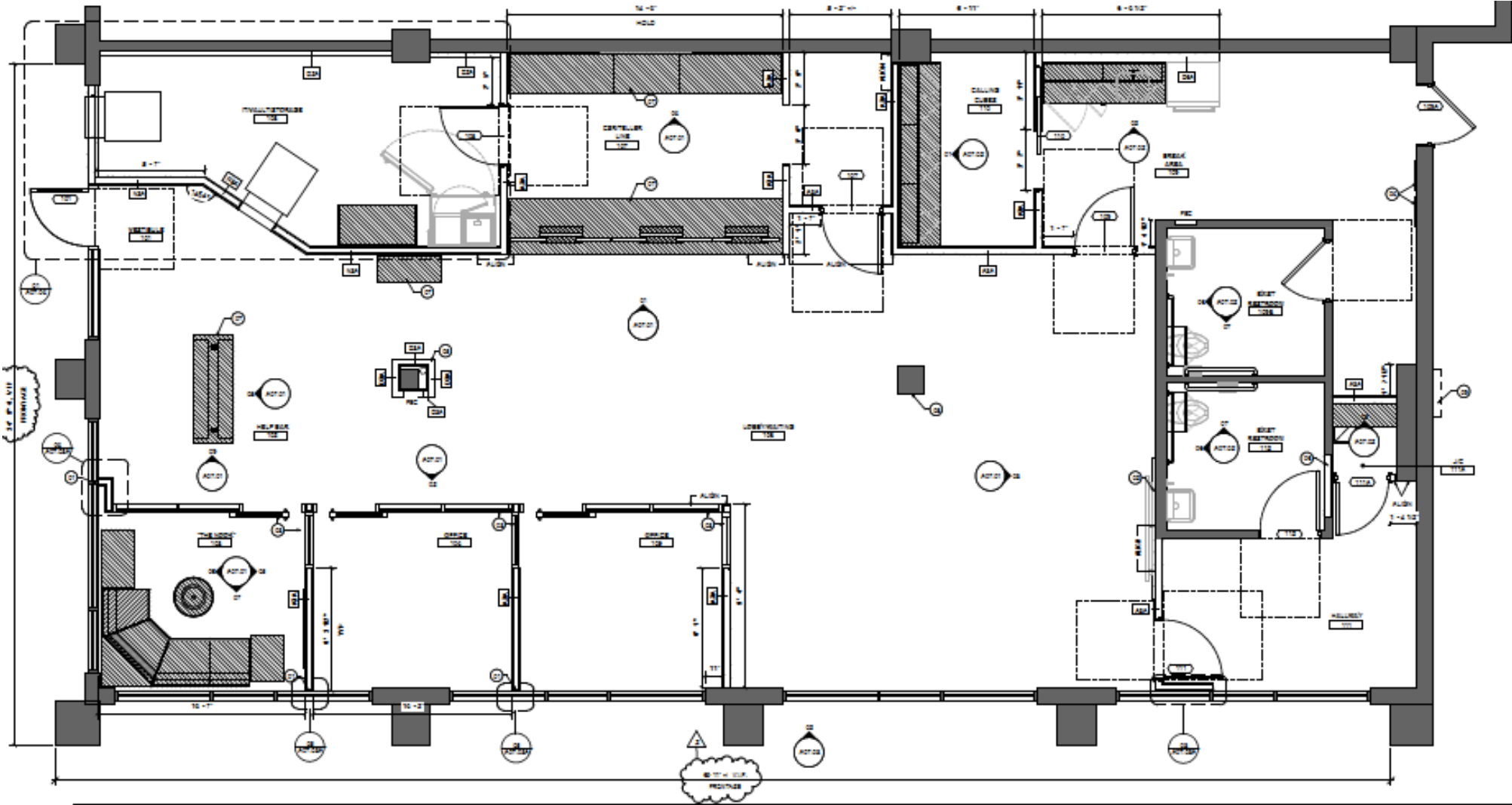


EXISTING CONDITION

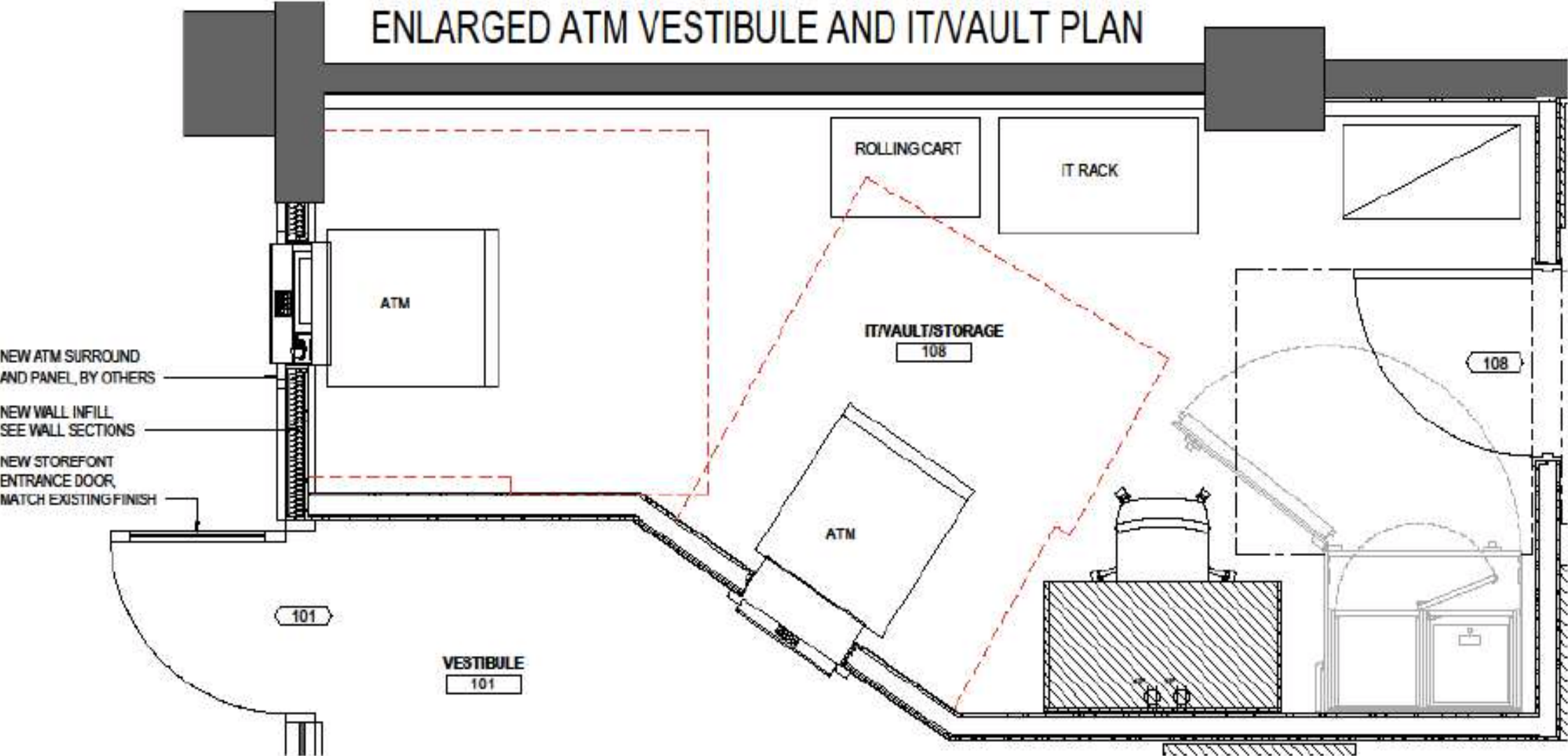


*Existing conditions photo taken prior to Qdoba signs being taken down.*

# Proposed Interior Design



# Proposed Interior Design, cont.



# Neighboring Businesses- Same Block



1270 Mass Ave



1288 Mass Ave



1276 Mass Ave

# Neighboring Businesses



1300 Mass Ave



1308-1312 Mass Ave



1336 Mass Ave



1256 Mass Ave