



# CAMBRIDGE HISTORICAL COMMISSION

831 Massachusetts Avenue, 2<sup>nd</sup> Fl., Cambridge, Massachusetts 02139  
Telephone: 617 349 4683 TTY: 617 349 6112  
E-mail: histcomm@cambridgema.gov URL: www.cambridgema.gov/Historic

## APPLICATION FOR CERTIFICATE

- The undersigned hereby applies to the Cambridge Historical Commission for a Certificate of (check one box):  Appropriateness,  Nonapplicability, or  Hardship, in accordance with Chapter 40C of the Massachusetts General Laws and/or Chapter 2.78 of the Municipal Code.
- Address of property: 101 Brattle Street, Cambridge, Massachusetts
- Describe the proposed alteration(s), construction or demolition in the space provided below:  
(An additional page can be attached, if necessary).

South Campus Phase 1 Landscape Improvements - Request for Certificates of Appropriateness:

Phase 1 of the proposed Lesley University landscape improvements includes the demolition of an existing parking lot and basketball court that are visible from Brattle Street, in between 101 Brattle and Lawrence Hall. This project will reorganize the parking lot to standardize the dimensions of the drive lanes and parking spaces, while also improving the orthogonal relationship with the existing buildings. A major driver of this project is to create more usable outdoor space for Lesley University students that live on campus, without impacting the historical character of South Campus. In doing so, we propose to enhance a "student life" quadrangle behind Kidder House, relocate the basketball court behind 101 Brattle Street so that it is out-of-view from Brattle Street, and reorganize the parking lot behind a robust planted area to screen the parked vehicles from view on Brattle Street. Additionally, new site lighting, cameras, and WiFi are proposed to improve campus safety and access. This 21st century infrastructure is intended to be concealed from view from Brattle Street. To enable these and future improvements at Lesley's South Campus, a substantial stormwater detention system will be constructed under the new parking lot to meet the City's progressive stormwater requirements for site redevelopment.

I certify that the information contained herein is true and accurate to the best of my knowledge and belief.  
The undersigned also attests that he/she has read the statements printed on the reverse.

Name of Property Owner of Record: Lesley University

Mailing Address: 29 Everett Street, Cambridge MA 02138

Telephone/Fax: 781-858-1701 E-mail: joanne.kossuth@lesley.edu

⇒ Signature of Property Owner of Record: Joanne Kossuth  
(Required field; the application will not be considered complete without the property owner's signature)

Name of proponent, if not record owner: \_\_\_\_\_

Mailing Address: \_\_\_\_\_

Telephone/Fax: \_\_\_\_\_ E-mail: \_\_\_\_\_

(for office use only):

Date Application Received: 11/8/22 Case Number: 4891 Hearing Date: 12/8/22

Type of Certificate Issued: \_\_\_\_\_ Date Issued: \_\_\_\_\_

**Instructions for Completing this Application:**

An application must be filed with the Cambridge Historical Commission (CHC) before work begins. Twelve (12) copies of the application should be attached to twelve (12) copies of supplementary material such as sketches, scale drawings, site plans, specifications, or photographs sufficient to enable the CHC to understand the details of the work proposed and to make a determination on the application. Plans no larger than 11" x 17" are preferred. Please submit reduced copies of plans if the originals are of a larger dimension. Do not use spiral bindings, plastic covers, or heavy stock (these will be removed prior to mailing). Double sided copies are encouraged to save paper and postage. See our website or call for a list of meeting dates and deadlines.

The CHC staff welcomes advance inquiries for interpretations or advice. Call 617/349-4683 for appointment. An application is considered incomplete without accompanying plans and drawings. The CHC reserves the right to determine an application incomplete at the time of hearing the application if it determines that the plans, drawings and other information submitted are not sufficient to enable it to determine whether to grant or deny a certificate.

Owners are urged to appear before the CHC in person or to designate an agent to act for them. The CHC will deem the agent to be authorized by the owner to make decisions regarding the extension or waiver of the period within which the CHC is otherwise required to make a determination on the application. All meetings are open to the public.

---

**Administration of Historic Districts, Landmarks, and Protected Properties:**

The administration of historic districts and landmarks is guided by the provisions of Ch. 40C of the Mass. General Laws and by Ch. 2.78 of the Code of the City Of Cambridge. Other properties may also be subject to CHC jurisdiction including properties with conditional variances and properties governed by individual preservation restrictions.

Any new construction, alteration of exterior architectural features, or demolition within an historic district or on the premises of a protected property or a designated landmark must be reviewed by the CHC. No building permit for such work on a protected property, designated landmark, or property within a historic district may be issued by the Inspectional Services Department until a certificate has been issued. The CHC must approve the alteration or construction of all structures, including signs, fences, walls, terraces, walks, driveways, light fixtures and the like, which are "open to view from a public street, public way, public park or public body of water," whether or not a building permit is required, and must approve changes in exterior color for properties within a historic district or as otherwise agreed.

Prior to each hearing, the CHC staff will take slides or digital photographs of the subject property in daylight with ordinary camera equipment for the purpose of documenting the publicly visible conditions of buildings and exterior architectural features for the CHC and the public to view at the hearing. More information can be provided on request.

The CHC issues three types of certificates. A Certificate of Appropriateness will be issued when the CHC has determined that the construction or alteration will be appropriate for or compatible with the preservation or protection of the historic district, designated landmark, or other protected property. A Certificate of Nonapplicability may be issued when an application does not involve an exterior feature, or when the exterior feature is not then subject to CHC review. A Certificate of Hardship may be issued when failure to approve an otherwise inappropriate project would involve substantial hardship to the applicant and the CHC determines that the project can be accomplished without substantial detriment to the purposes of the district, preservation restriction, or landmark designation.

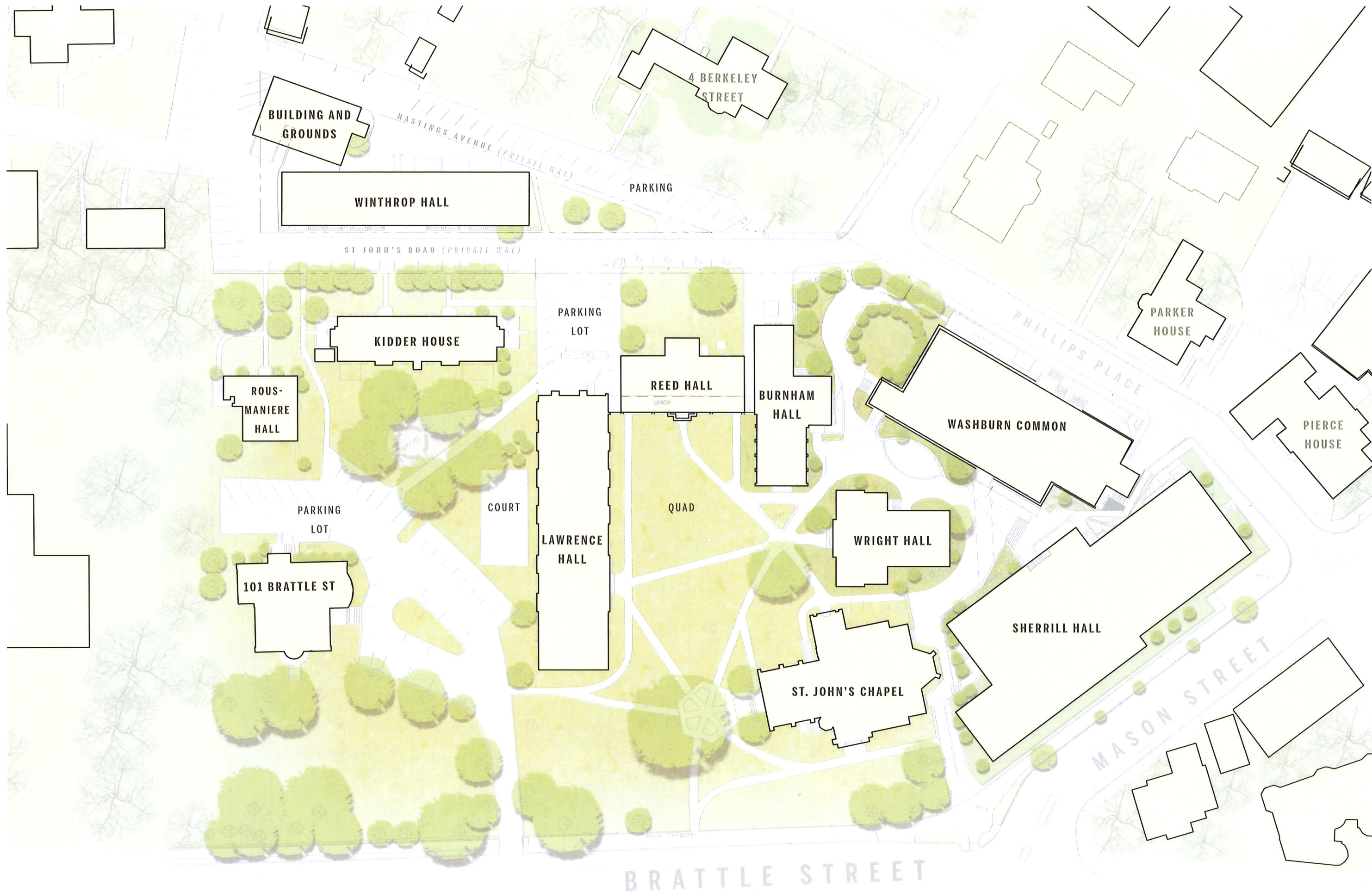
The CHC considers each application on its own merits, and does not apply specific architectural guidelines. Landscaping with plant materials is not subject to CHC review unless it is planned in conjunction with alterations or new construction. The CHC must approve projects that are not incongruous with the historic aspects or the architectural characteristics of the protected property, landmark, or historic district.

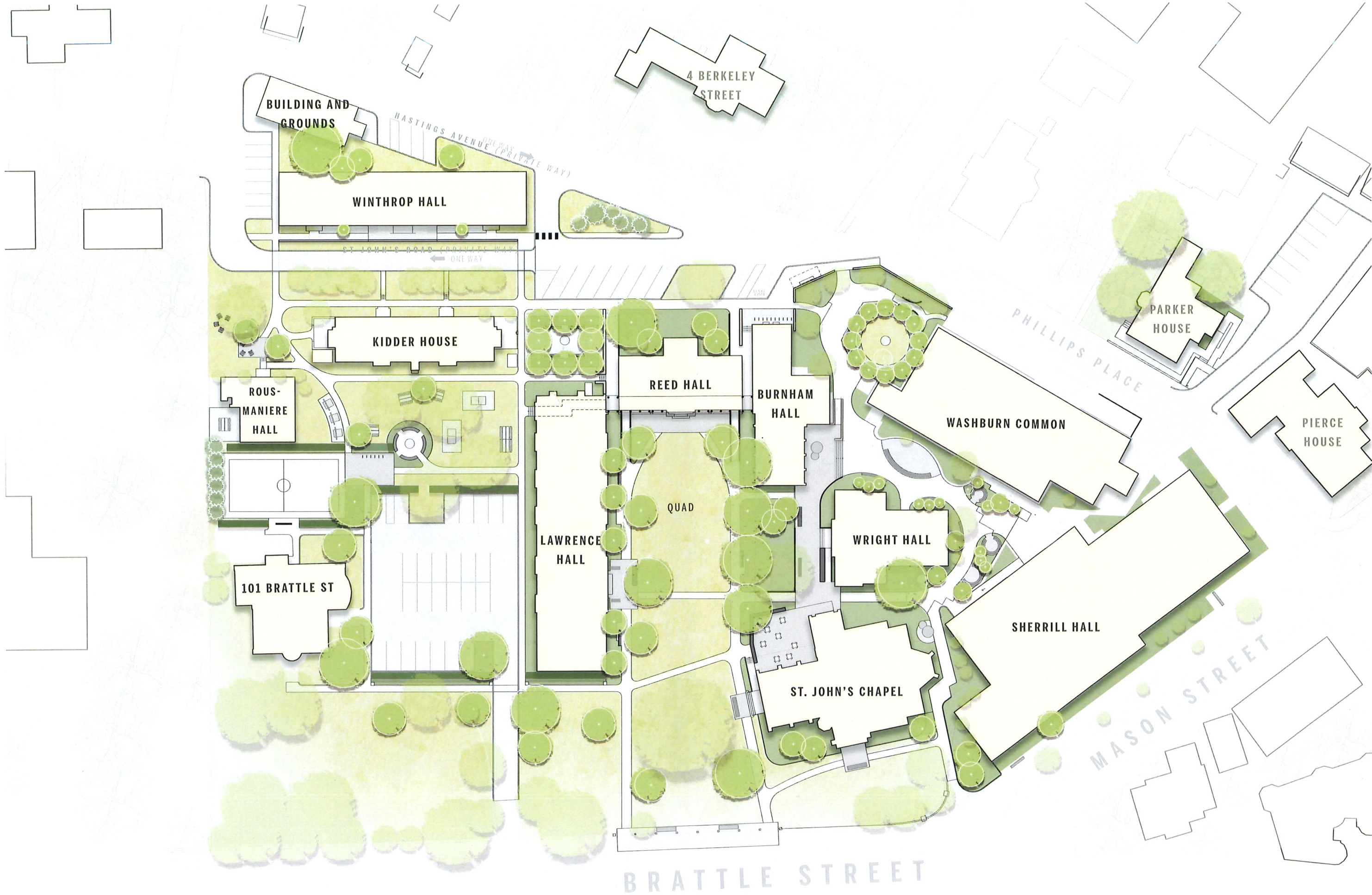


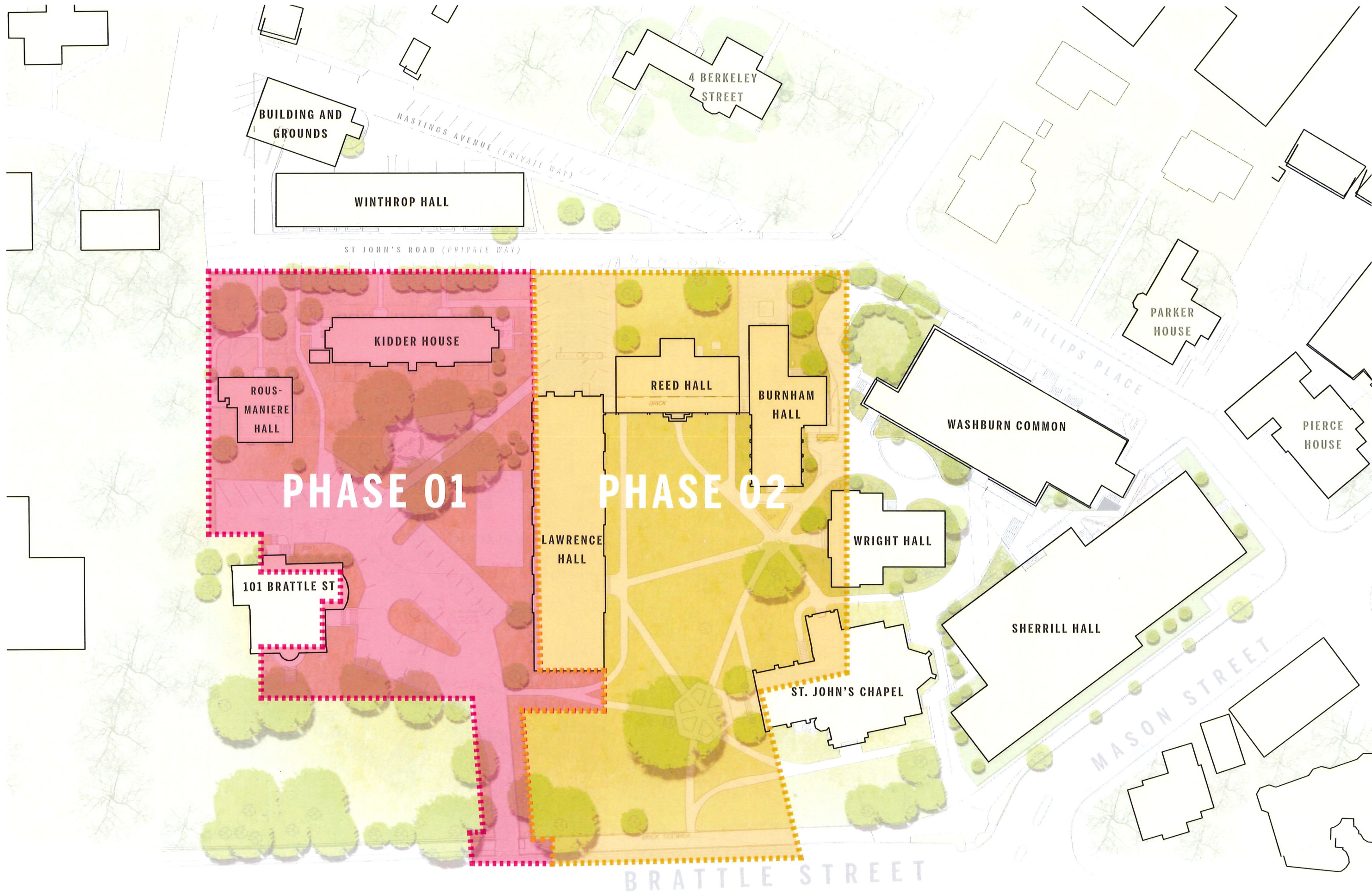
# LESLEY UNIVERSITY | SOUTH CAMPUS PHASE 1

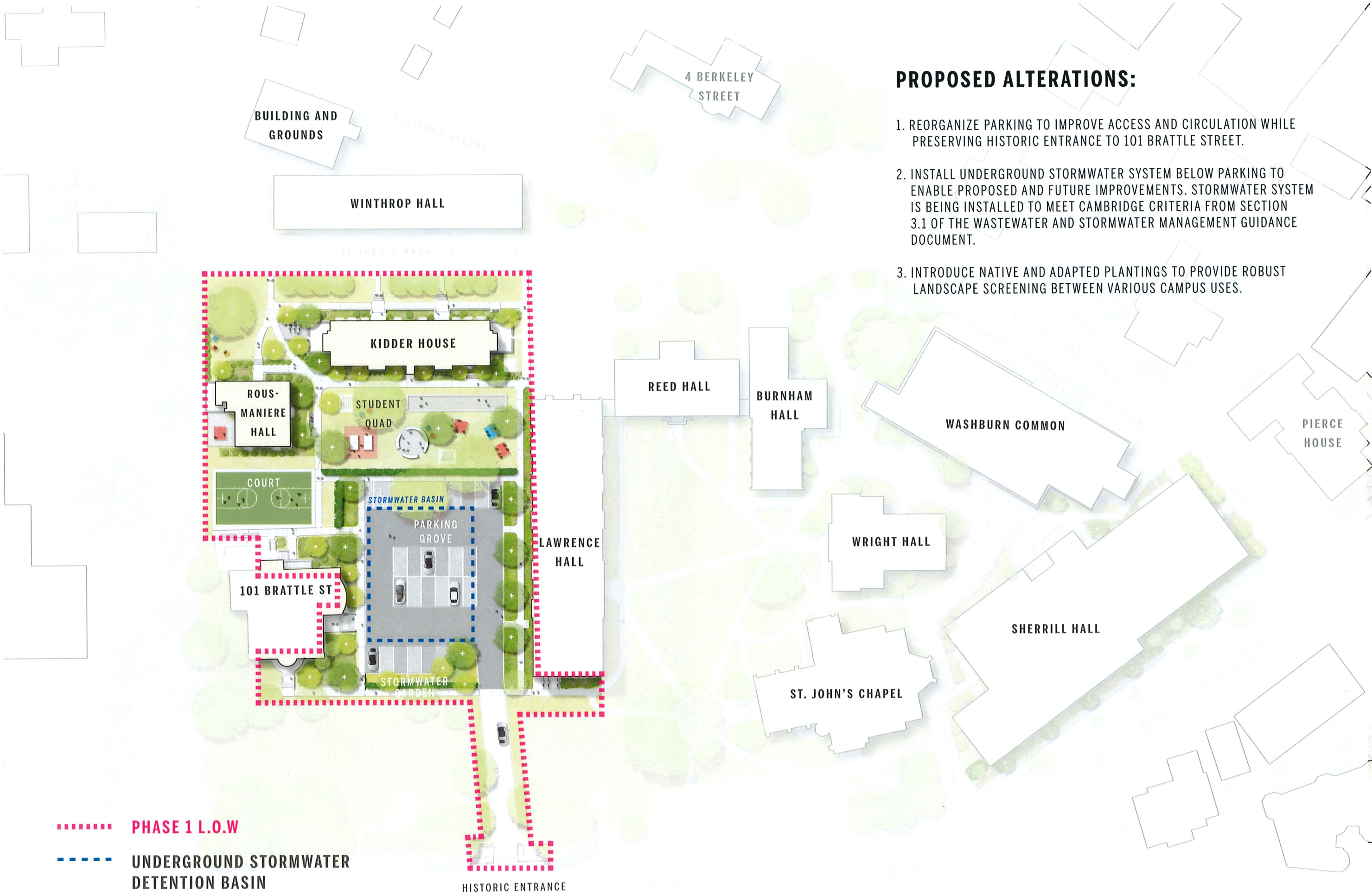
12-01-2022 Cambridge Historical Commission

1. South Campus Master Plan
2. Phase 1 Landscape Scope
3. Phase 1 Parking Grove Layout
4. Landscape Materials
5. Brattle Street Entrance
6. Details
7. Exterior Lighting







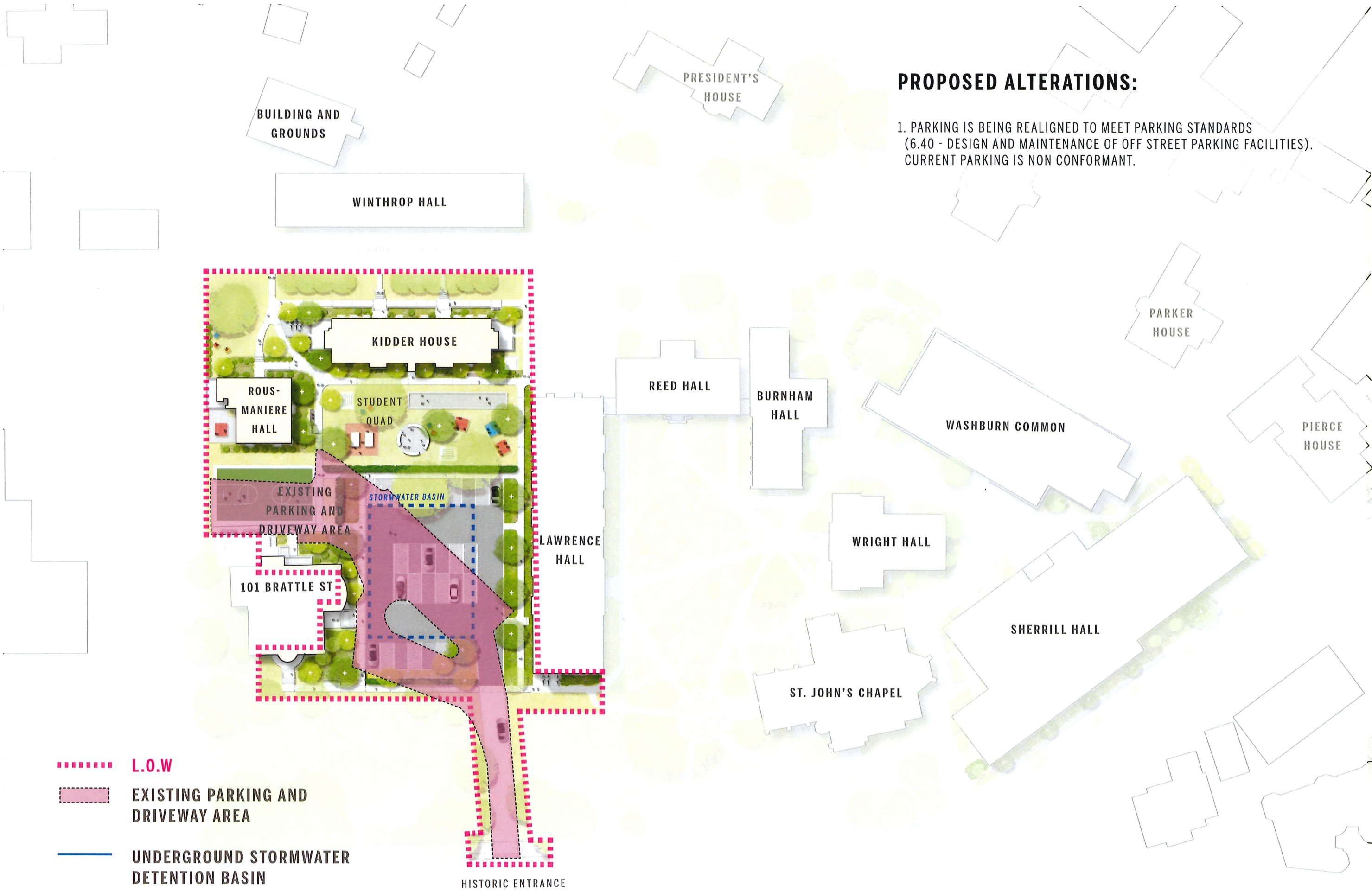


**PROPOSED ALTERATIONS:**

- 1. REORGANIZE PARKING TO IMPROVE ACCESS AND CIRCULATION WHILE PRESERVING HISTORIC ENTRANCE TO 101 BRATTLE STREET.
- 2. INSTALL UNDERGROUND STORMWATER SYSTEM BELOW PARKING TO ENABLE PROPOSED AND FUTURE IMPROVEMENTS. STORMWATER SYSTEM IS BEING INSTALLED TO MEET CAMBRIDGE CRITERIA FROM SECTION 3.1 OF THE WASTEWATER AND STORMWATER MANAGEMENT GUIDANCE DOCUMENT.
- 3. INTRODUCE NATIVE AND ADAPTED PLANTINGS TO PROVIDE ROBUST LANDSCAPE SCREENING BETWEEN VARIOUS CAMPUS USES.

..... **PHASE 1 L.O.W**  
 - - - - **UNDERGROUND STORMWATER DETENTION BASIN**

HISTORIC ENTRANCE

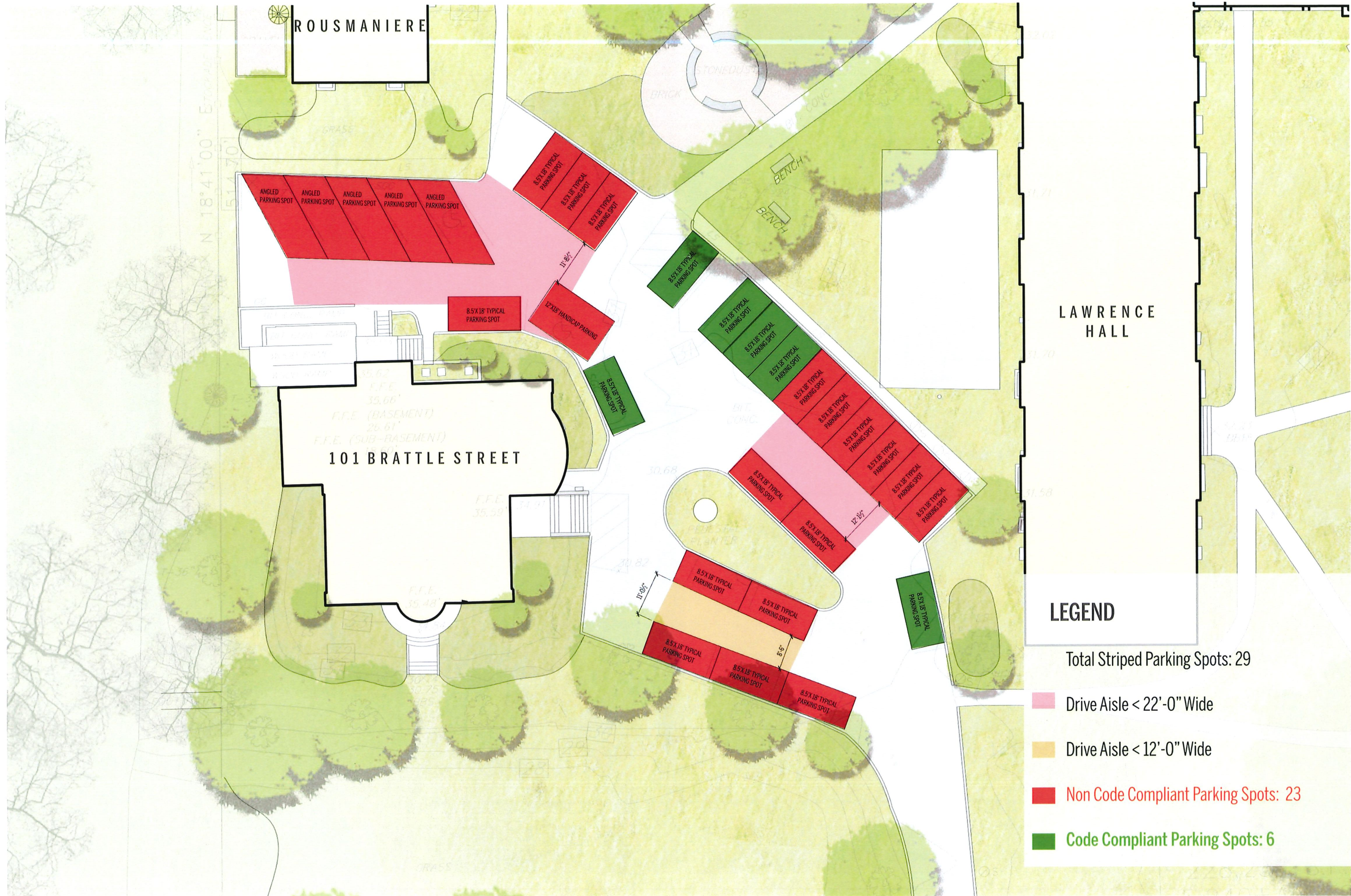


**PROPOSED ALTERATIONS:**

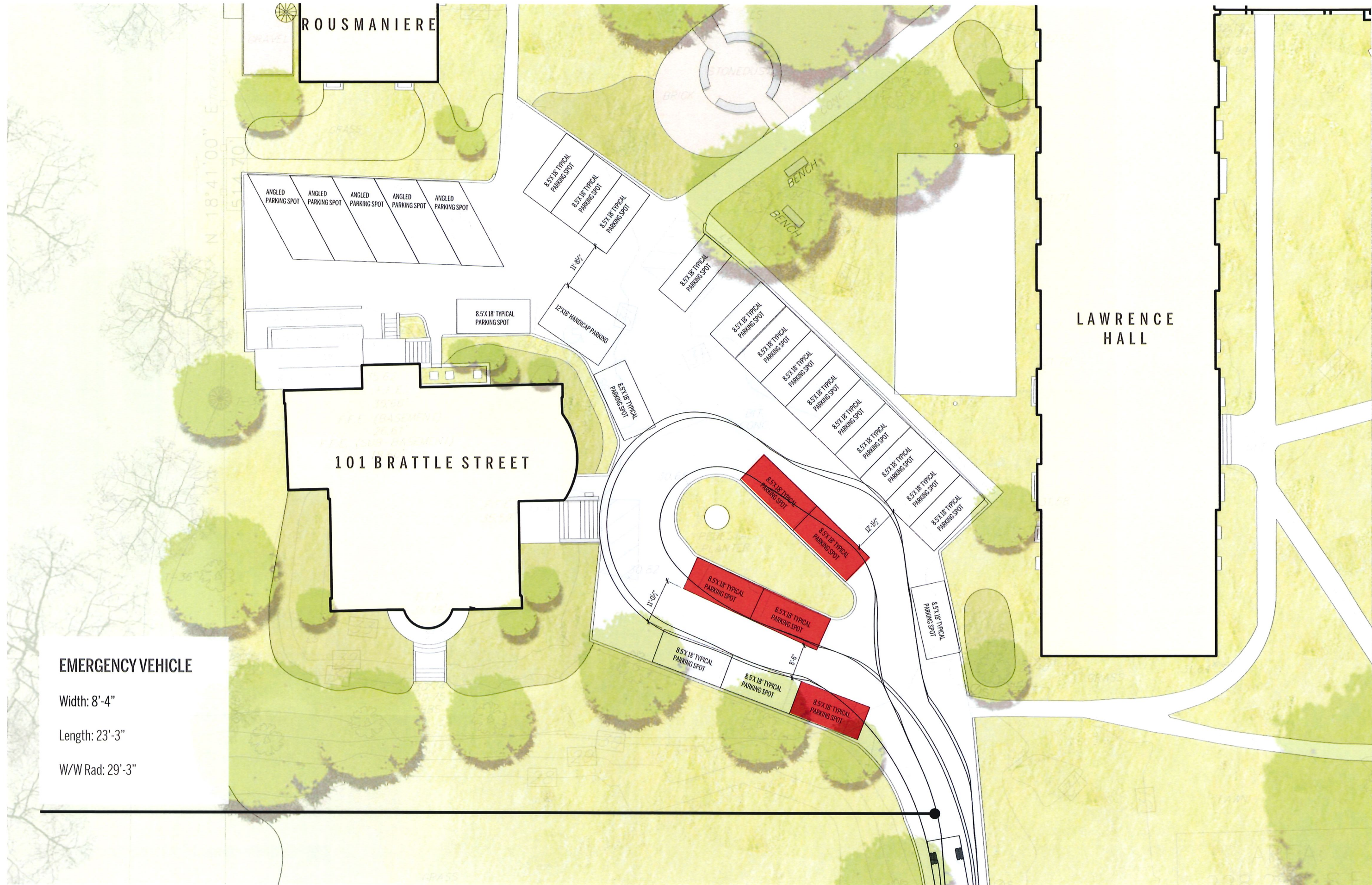
- 1. PARKING IS BEING REALIGNED TO MEET PARKING STANDARDS (6.40 - DESIGN AND MAINTENANCE OF OFF STREET PARKING FACILITIES). CURRENT PARKING IS NON CONFORMANT.

- ..... L.O.W
- EXISTING PARKING AND DRIVEWAY AREA
- UNDERGROUND STORMWATER DETENTION BASIN





**SOUTH CAMPUS | EXISTING PARKING LAYOUT**



**EMERGENCY VEHICLE**

- Width: 8'-4"
- Length: 23'-3"
- W/W Rad: 29'-3"





**EMERGENCY VEHICLE**

Width: 8'-4"

Length: 23'-3"

W/W Rad: 29'-3"

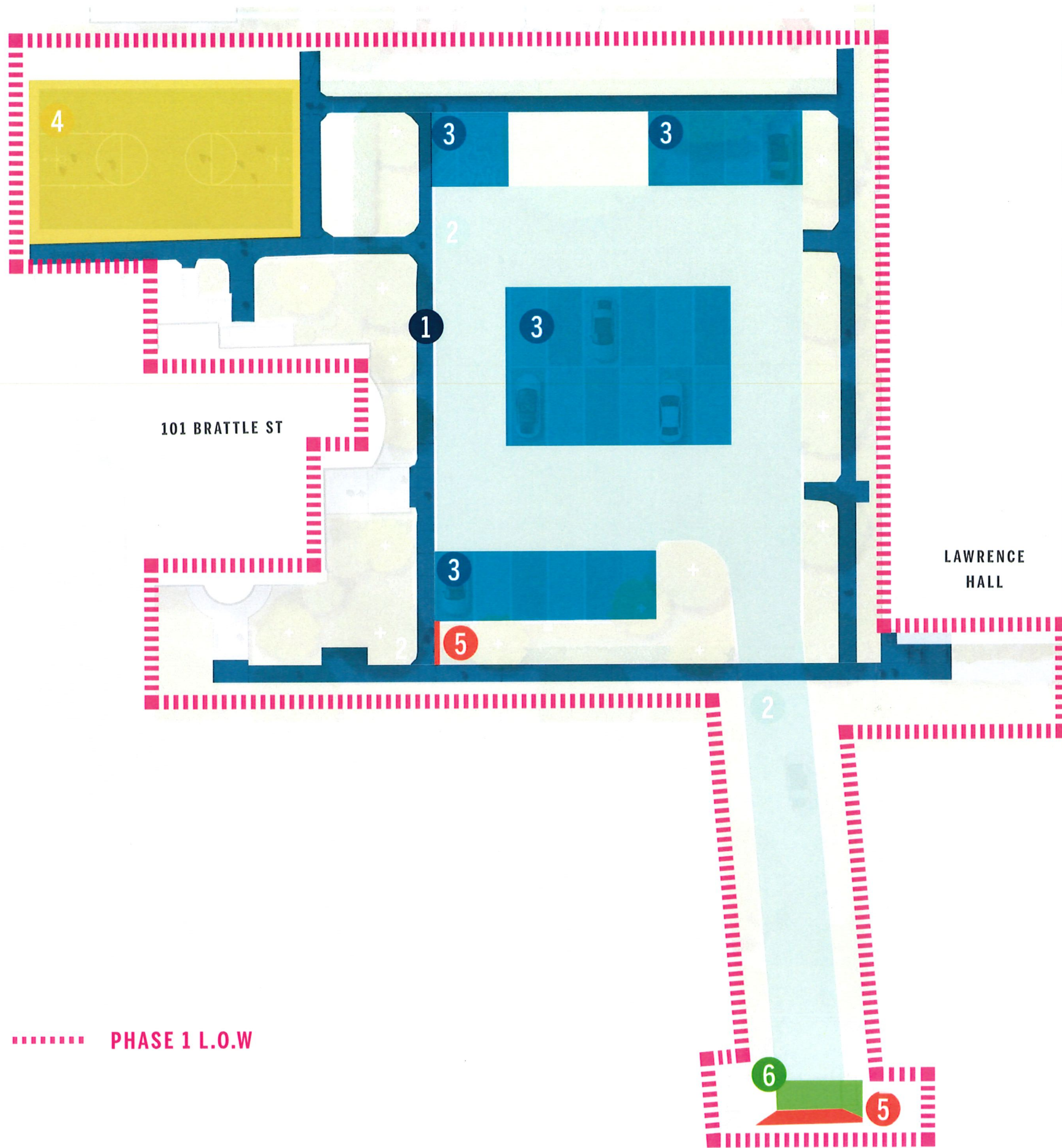
101 BRATTLE STREET

ROUSMANIERE

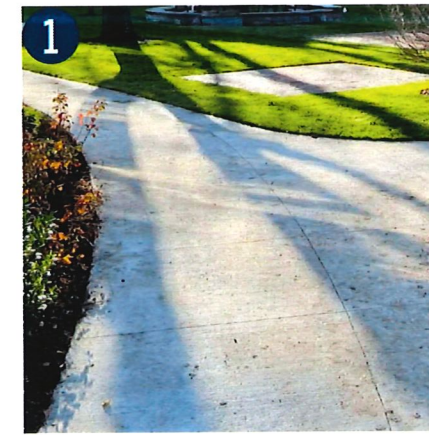
LAWRENCE HALL

EVEVEVEVEVEVEVEVE

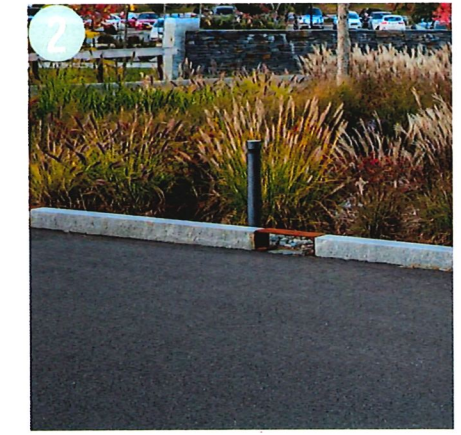
Wash State Public Safety Building



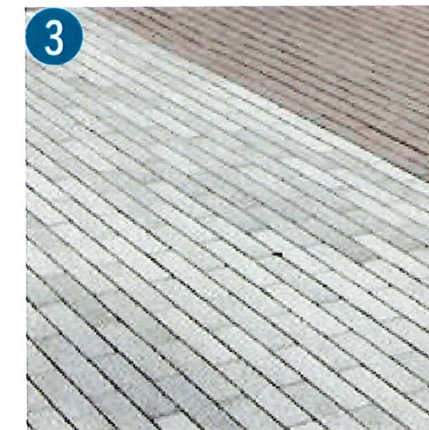
..... PHASE 1 L.O.W



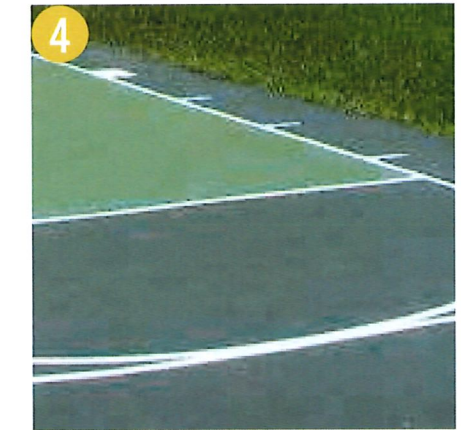
CONCRETE PAVING



BITUMINOUS CONCRETE PAVING



POROUS PAVING



BITUMINOUS CONCRETE WITH SPORT SURFACE COATING



GRANITE CURB/POST/HEADWALL



SALVAGED BRICK PAVING

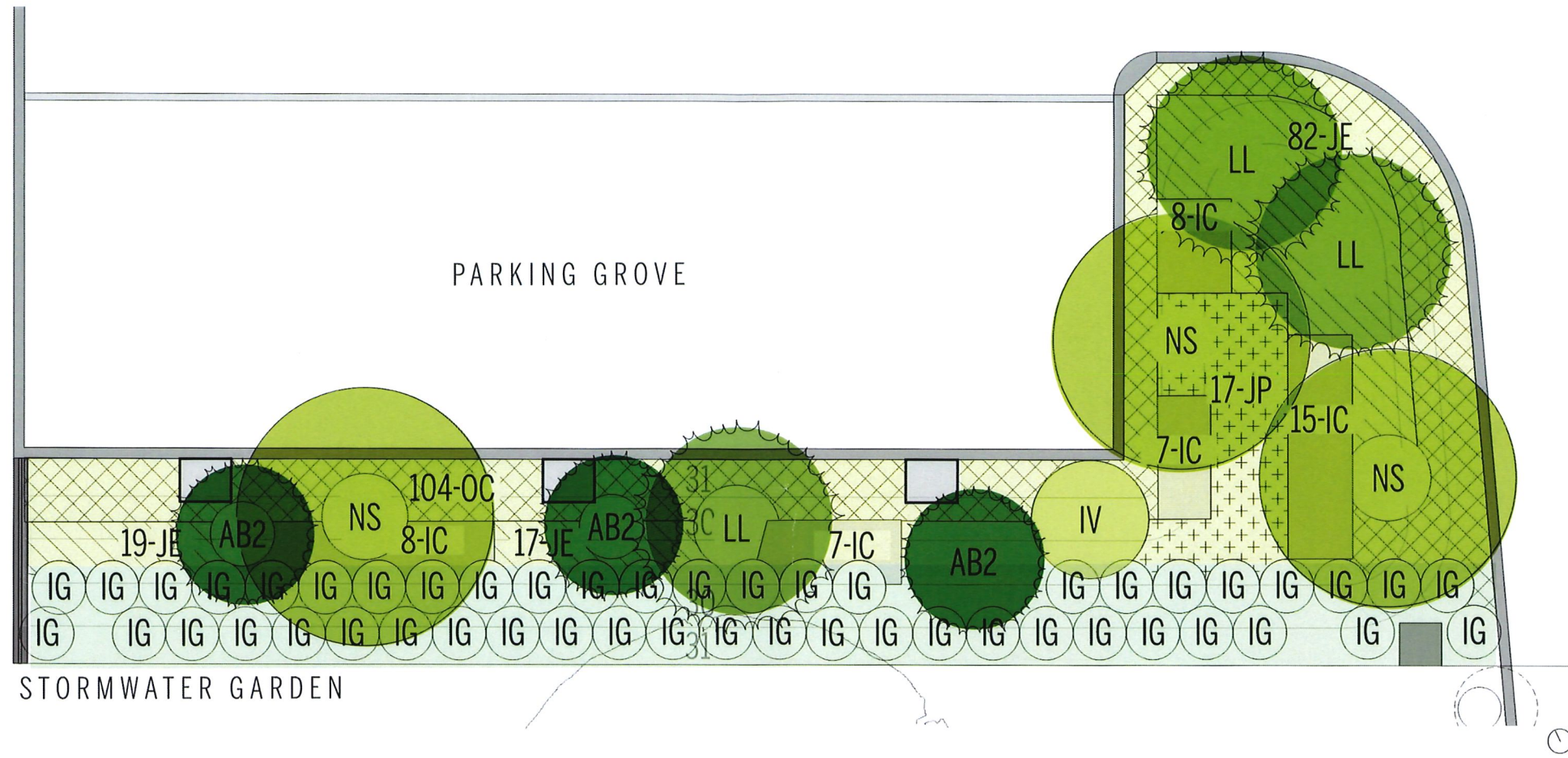


KEY PLAN



SOUTH CAMPUS | SECTION THROUGH 101 BRATTLE STREET PARKING GROVE

STIMSON





SOUTH CAMPUS | EXISTING ENTRANCE TO 101 BRATTLE FROM BRATTLE STREET

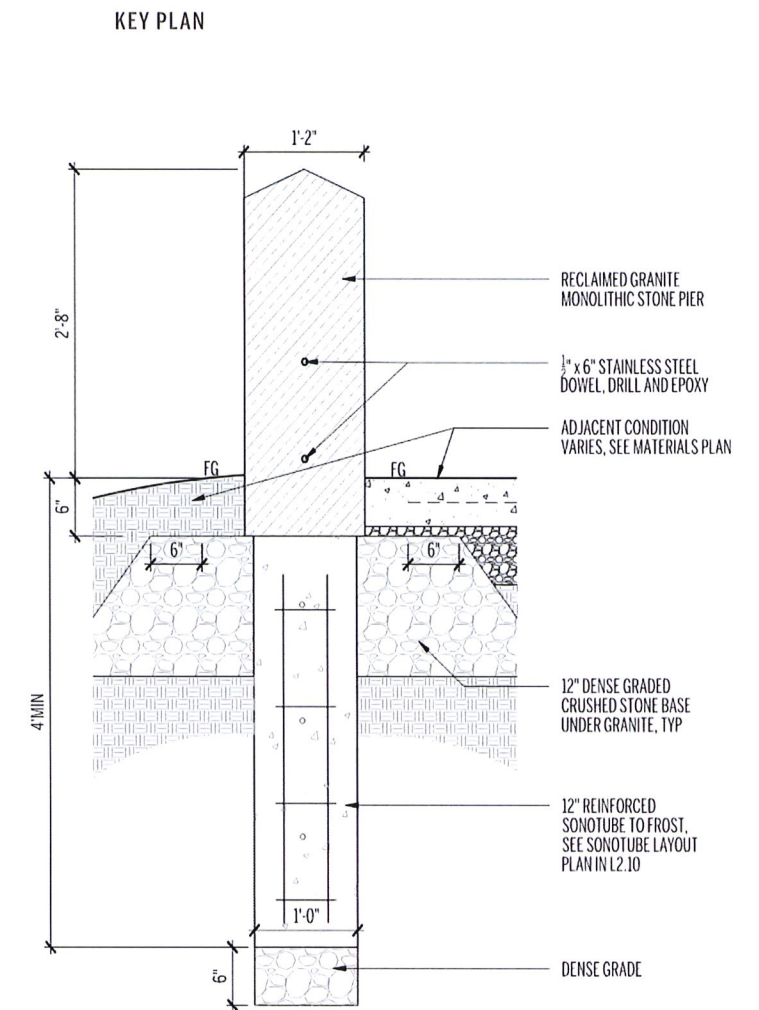
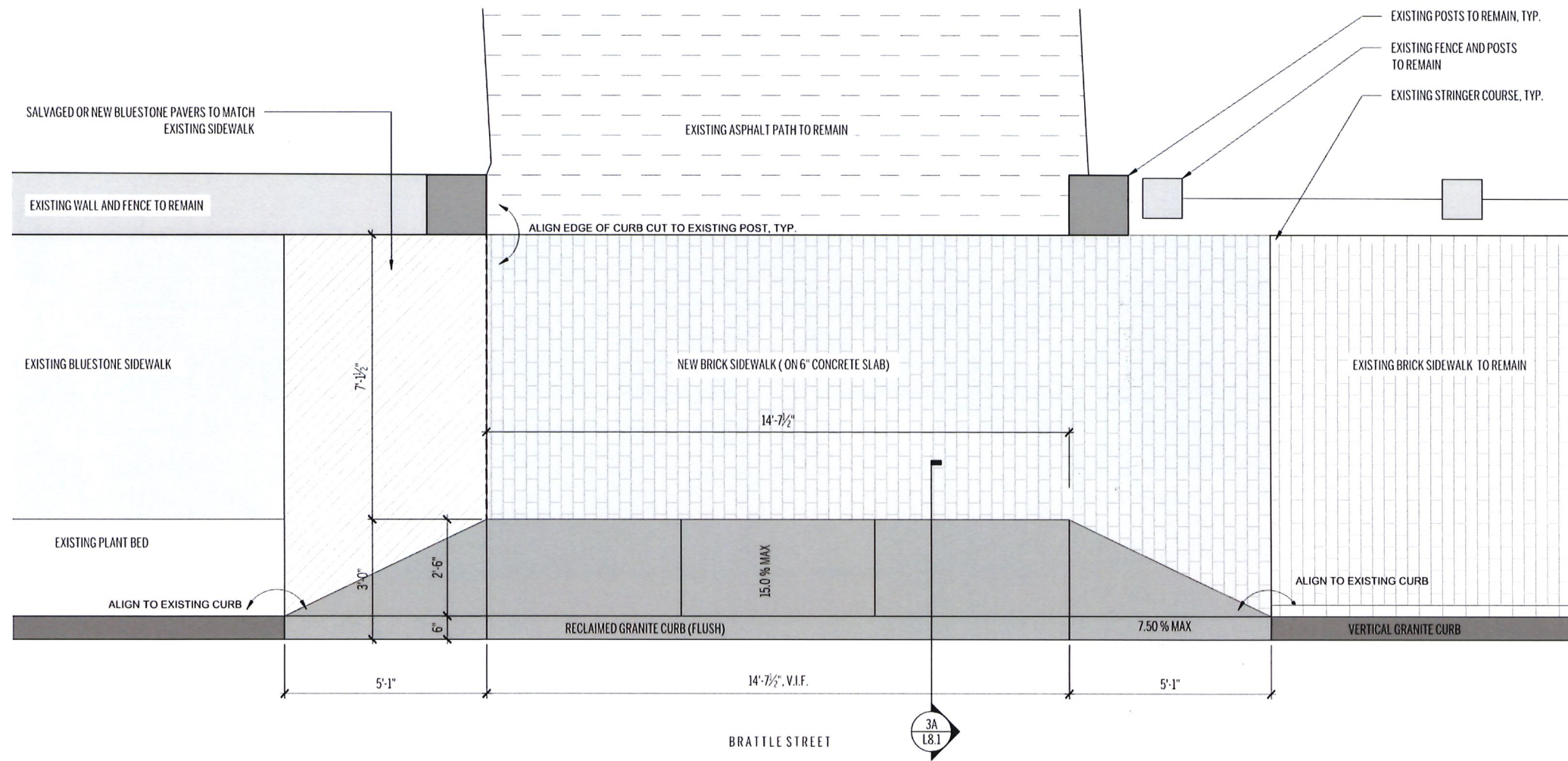
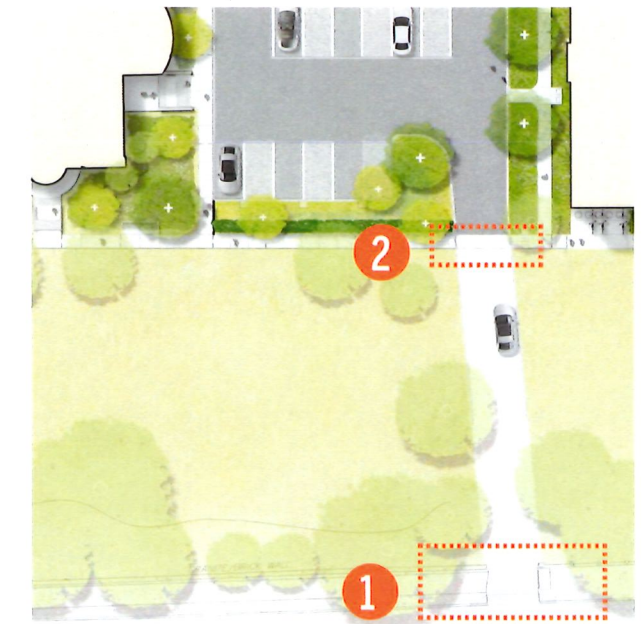
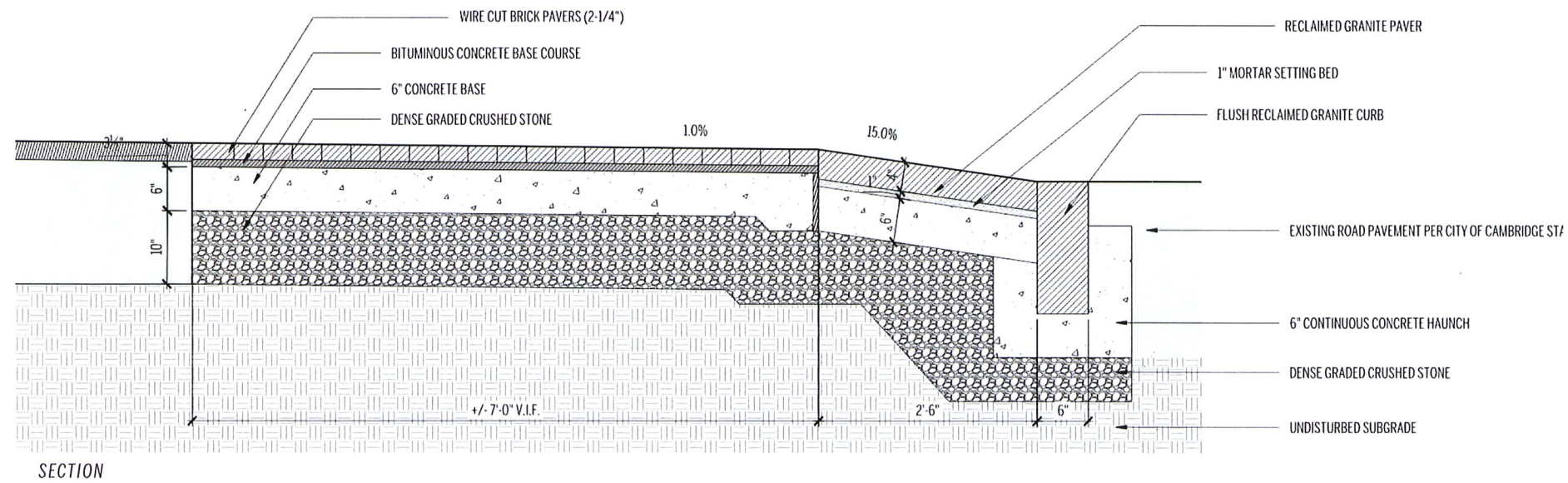


## PROPOSED ALTERATIONS:

1. REPLACE EXISTING CURB CUT AT BRATTLE STREET WITH BRICK SIDEWALK AND GRANITE APRON - PER CITY OF CAMBRIDGE STANDARDS.
2. INTRODUCE NATIVE AND ADAPTED PLANTINGS TO CONCEAL PARKING LOT AND RESIDENTIAL ACTIVITIES FROM BRATTLE STREET.
3. INSTALL RECLAIMED GRANITE PIERS TO MARK THE ENTRANCE TO THE NEW PARKING LOT BEYOND HISTORIC ENTRANCE.



SOUTH CAMPUS | ENTRANCE TO 101 BRATTLE FROM BRATTLE STREET



**1** BRICK AND GRANITE CURB CUT AT 101 BRATTLE STREET

**2** RECLAIMED GRANITE PIER

# SOUTH CAMPUS | BRICK CURB CUT + RECLAIMED GRANITE PIER DETAILS

Lesley University South Campus

Site Lighting for Connective Fabric - Cambridge Historical Commission



## Introduction

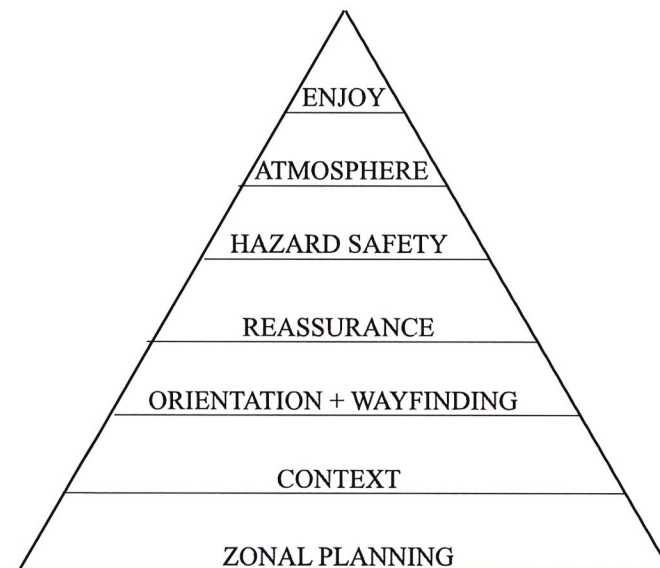
The new Connective Fabric aims to create a welcoming outdoor space in the heart of Lesley Campus, serving Students, Visitors and Local Inhabitants of the neighbours.

The Site Lighting must respond to, compliment and express the Architectural and Landscape design. Light creates ambience and feel of a place, as well as the expression of a structure.

We must consider the context of the buildings, the interaction with the surroundings and the historic value of the entire area of intervention.

The lighting for the site is required to achieve the following design criteria:

- Meet all necessary code requirements
- Be energy efficient
- Provide a safe nighttime environment
- Support moments of escape and enjoyment
- Enhance the historic value of Lesley Campus
- Be compatible with the preservation of the historic district



**Lesley Campus**  
View of the campus at nighttime



**Lesley Campus**  
View of the Campus during daytime

## Connective Fabric Site Lighting - Design Criteria

### Light Pollution

As defined by the International Dark Sky Association, together with the Illuminating Engineering Society, the site lighting design will take into consideration the Five Principles for Responsible Outdoor Lighting:

1. Useful - All light should have a clear purpose
2. Targeted - Light should be directed only to where needed
3. Low Light Levels - Light should be no brighter than necessary
4. Controlled - Light should be used only when it is useful
5. Color - Use warmer color lights where possible

The site lighting will not exceed the luminaire backlight and glare ratings BUG rating method, as defined in IES TM-15-11, to avoid light trespass to nearby properties and to avoid upward light into the night sky.

### Light CCT (Correlated Color Temperature)

The design intent for the CCT (Correlated Color Temperature) is to respect the light pollution principle “color” of using a warm color temperature, and to match interior lighting of the buildings, with exterior lighting. The Site Lighting all over the Campus will be 3000K.

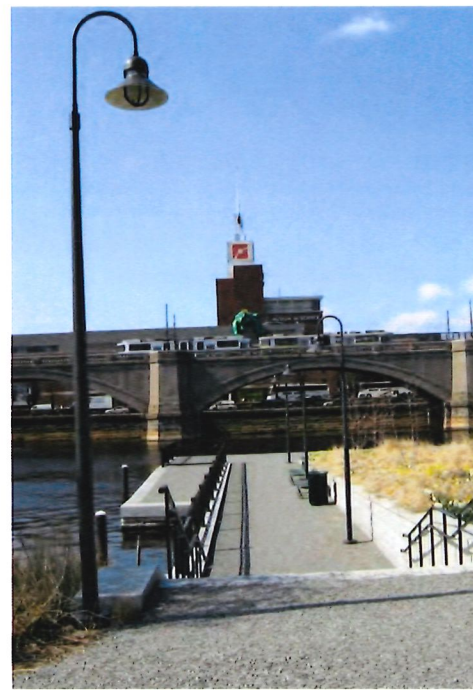
### Illuminance Levels

The design requirements for light illuminance levels, are based on the code references included here:

- IES RP-43-22 Lighting Exterior Applications
- IES RP-8-18 Roadway and Parking Facilities

## Design for Luminaires and Poles - Strategy

- Take into account the historic precedent in the Cambridge area of classic-style light fixtures.



**Sheperds Crook fixture used in Cambridge parks**  
Images from CAMBRIDGE LIGHTING STUDY REPORT

- Upgrade the existing situation of facade mounted security cameras, by integrating them into modern neutral-looking light poles



**Burnham Hall**  
Facade mounted security camera - wi-fi

- Upgrade the existing situation of facade mounted Wi-Fi elements, by integrating them into modern neutral-looking light poles



**Burnham Hall**  
Facade mounted security camera - wi-fi



**Proposed Light fixture - Sheperds style**  
Post-top Light fixture by Bega



**Proposed Light fixture - Modern pole light with Integrated modules**  
Integrated security cameras and wi-fi modules in light poles City Element by Hess



**Proposed Light fixture - Modern pole light with Integrated modules**  
Integrated security cameras and wi-fi modules in light poles City Element by Hess



**E01** Pole light with security cameras interated - wifi integrated - CITY ELEMENTS 230AR900 LVC



**E02** Post top luminaire with asymmetrical light distribution BEGA 77911



**E03** LED pole-top luminaire with asymmetrical light distribution for Parking area BEGA 99522



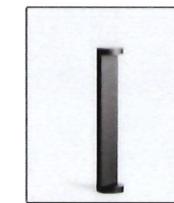
**E01** Pole light with security cameras interated - wifi integrated - CITY ELEMENTS 230AR900 LVC



**E02** Post top luminaire with asymmetrical light distribution BEGA 77911



**E03** LED pole-top luminaire with asymmetrical light distribution for Parking area BEGA 99522



**E04** LED bollard with shielded asymmetric light distribution BEGA 99058

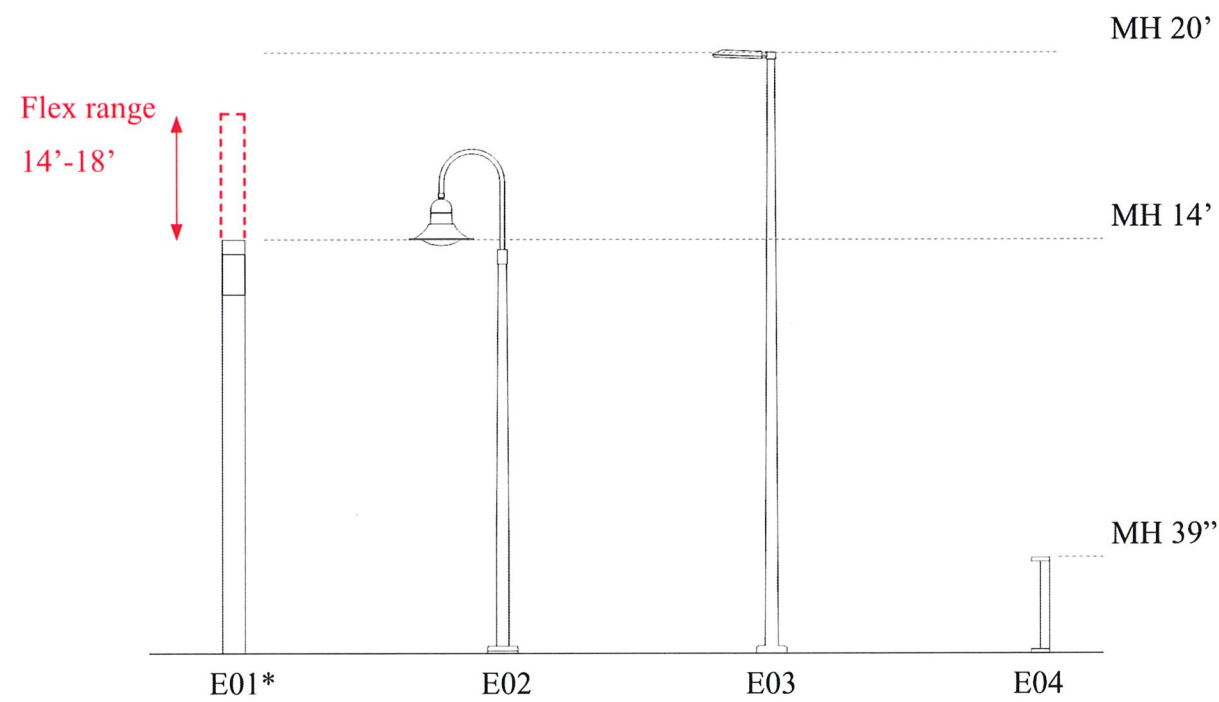


# Connective Fabric Site Lighting - Light Fixture Mounting Height

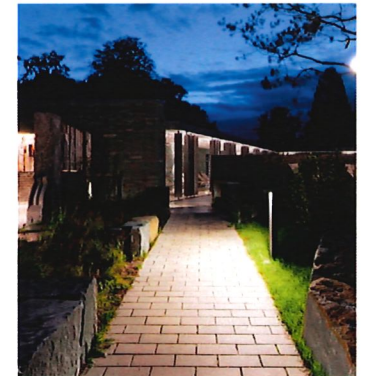
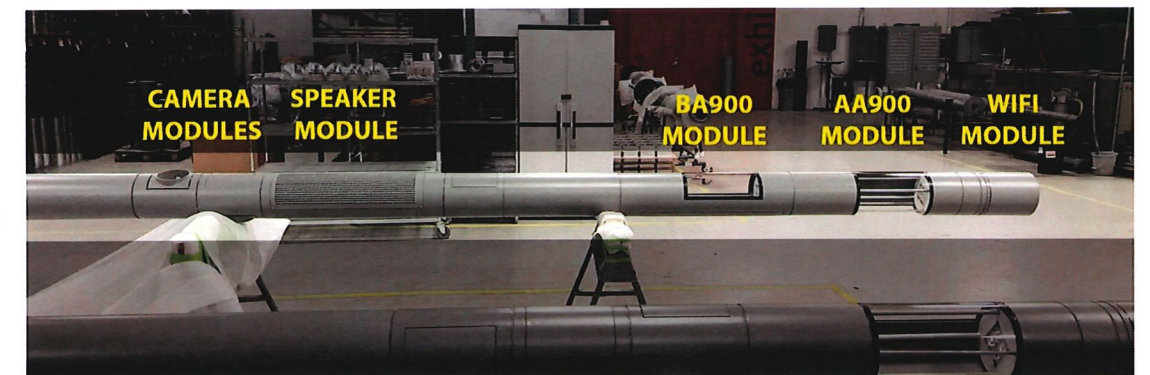
- Design considerations regarding the urban scale and appearance of the light fixture in the space.



2 SITE SECTION - 101 BRATTLE STREET  
3/16" = 1'-0"



\*E01 pole lamp will be available in different height variants, depending on the modules that will be integrated for security/IT.  
MH 14'-18' range



## Connective Fabric Site Lighting - Light Fixures images



**E02** Post top luminaire with asymmetrical light distribution  
BEGA 77911



**E01** Pole light with security cameras interated - wifi integrated - CITY ELEMENTS 230AR900 LVC



**E03** LED pole-top luminaire with asymmetrical light distribution for Parking area  
BEGA 99522



**E04** LED bollard with shielded asymmetric light distribution  
BEGA 99058

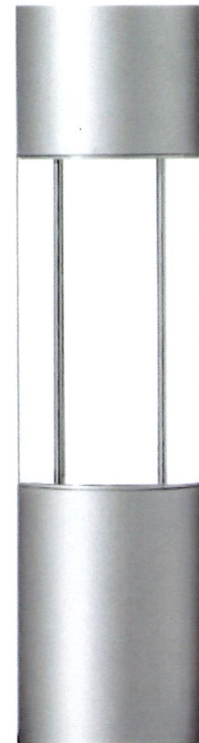
**CITY ELEMENTS 230 AR900 LVC**

Specification

.hess

City Elements 230 offers design professionals the flexibility of a multi-purpose lighting system in a single architectural structure. The modularity of the light column system allows each column to be customized for area lighting, accenting, waymarking, or pathway illumination or a combination of several different functions. Modules are factory set as needed and accent optics are adjustable internally for highlighting and aiming. Heights range from low level bollards to columns up to thirty feet tall. Base elements are available in flanged or flangeless models. Optional modules are also available to accommodate security cameras or convenience outlets with in-use covers for remote power. Luminaire housings and extruded aluminum shaft with flush hand hole are finished in finely textured paint. All hardware is stainless steel.

Consult on-line Configurator at [www.hessamerica.com](http://www.hessamerica.com) for detailed technical specifications and information on CE180 for smaller diameter columns . CSA Certified for Wet Locations.



Model	Color Temperature	Distribution	Volt	Finish	Option <b>TBD</b>
CE230/AR900/1LVC - 1 LEVO C Module	WW - 3000K	T2 - Type II	UNV - 120-277V	SG - Silver Grey	DIM - 0-10VDC Dimming
	NW - 4000K	T3 - Type III		DG - Dark Grey	N - None
		T4 - Type IV		GG - Graphite Grey	
		T5 - Type V		BL - Black	
				CC - Custom RAL Color	

**Ordering Information**

Specifications are subject to change without notification  
 HessAmerica > Products > Lighting Products > Illuminating Columns > CITY ELEMENTS 230  
[https://www.hessamerica.com/Products/Lighting/Illuminating\\_Columns/CITY\\_ELEMENTS\\_230/](https://www.hessamerica.com/Products/Lighting/Illuminating_Columns/CITY_ELEMENTS_230/)

**CITY ELEMENTS 230 AR900 LVC**

Specification

.hess

**DESCRIPTION**

Top element luminaire with 360 degree lens for City Elements 230 modular light column system.

**HOUSING**

Luminaire base and top housing are machined and fabricated from 6061 aluminum tubing with nominal diameter of 9.1" and thickness of 0.315". Clear acrylic cylindrical lens is bonded to base and top housing for a weather-tight seal. Top housing assembly includes removable cap for access to optical assembly and heat sink. Gore-tex filter prevents intrusion of moisture and particulate matter.

**OPTICS**

Optical assembly consists of one LEVO C LED module mounted within the cylindrical clear acrylic lens. The module consists of an aluminum core PCB with four high-power LEDs and a single piece lens molded from optical quality acrylic. Light distributions include a choice of Type II, III, IV, or V optics. LED circuit boards are equipped with electrical disconnects to allow for future technology upgrades. CRI is 80+.

**ELECTRICAL**

Electronic LED driver supplies 700mA drive current to the LED module with input voltage range from 120v through 277v at 50/60Hz. Power consumption is 37 watts. Optional 0-10v DC dimming is available on request.

**DELIVERED LUMEN OUTPUT / BUG RATING**

3000K  
 Type 2 = 3248 lumens / B1-U1-G1  
 Type 3 = 3356 lumens / B1-U2-G1  
 Type 4 = 3261 lumens / B1-U1-G1  
 Type 5 = 3542 lumens / B2-U1-G1

4000K  
 Type 2 = 3456 lumens / B1-U1-G1  
 Type 3 = 3571 lumens / B1-U2-G1  
 Type 4 = 3469 lumens / B1-U1-G1  
 Type 5 = 3768 lumens / B2-U1-G1

NOTE : Due to rapid and continuous advances in LED technology, LED luminaire data is subject to change without notice and at the discretion of HessAmerica. Consult factory for current technical data.

**MOUNTING MH 14'-18' depending on integration of modules**

Top element is factory installed to the modular column assembly and ships as a complete column.

**FINISH**

Housing is cleaned ultrasonically prior to painting. Standard finish is finely textured matte silver grey metallic, dark grey, or graphite grey. Special colors available on request.

**WARRANTY**

Limited product warranty period including LEDs is five years. Driver shall carry the manufacturer's limited warranty.

**CERTIFICATION**

CSA Certified for Wet Locations

Specifications are subject to change without notification  
 HessAmerica > Products > Lighting Products > Illuminating Columns > CITY ELEMENTS 230  
[https://www.hessamerica.com/Products/Lighting/Illuminating\\_Columns/CITY\\_ELEMENTS\\_230/](https://www.hessamerica.com/Products/Lighting/Illuminating_Columns/CITY_ELEMENTS_230/)

# Lighting Cut sheet - E02

## Pole top luminaires with asymmetrical light distribution

**Housing:** Two interlocking die-cast aluminum housings. Heavy gauge .080" spun aluminum shade with rolled edge, finished white inside. Die castings are marine grade, copper free (≤ 0.3% copper content) A360.0 aluminum alloy.

**Arm:** Fabricated from .125" wall aluminum extrusion formed into a continuous smooth radius, terminating and welded into a one piece die-cast aluminum fitter. Fitter slip fits a 3" O.D. pole top and is secured by six (6) socket head stainless steel set screws threaded into stainless steel inserts.

**Enclosure:** Lamp enclosure/optical system comprises an assembly of two pure anodized aluminum asymmetrical main beam reflectors with clear impact resistant acrylic lens with optical texture fixed to a heavy gauge .080" spun aluminum shade with rolled edge, finished white inside and rigidly fastened to the luminaire housing. Fasteners are stainless steel.

**Electrical:** 42.8W LED luminaire, 48 total system watts, -30°C start temperature. Integral 120V through 277V electronic LED driver located in luminaire head, 0-10V dimming. Standard LED color temperature is 4000K with a >80 CRI. Available in 3000K (>80 CRI); add suffix K3 to order.

**Note:** Due to the dynamic nature of LED technology, LED luminaire data on this sheet is subject to change at the discretion of BEGA-US. For the most current technical data, please refer to [www.bega-us.com](http://www.bega-us.com).

**Finish:** All BEGA standard finishes are polyester powder coat with minimum 3 mil thickness. Available in four standard BEGA colors: Black (BLK); White (WHT); Bronze (BRZ); Silver (SLV). To specify, add appropriate suffix to catalog number. Custom colors supplied on special order.

UL listed for US and Canadian Standards, suitable for wet locations. Protection class: IP65.

**Weight:** 27.6 lbs.

**EPA (Effective projection area):** 2.37 sq. ft.

**Luminaire Lumens:** 2548  
Tested in accordance with LM-79-08



### Single pole-top luminaires

Lamp	LEED	A	B	C		
77911	42.8W LED	LZ-2	26"	46 1/2"	40"	MH 14'

Recommended for use with 14" to 18" poles.

BEGA-US 1000 BEGA Way, Carpinteria, CA 93013 (805)684-0533 FAX (805)566-9474 [www.bega-us.com](http://www.bega-us.com)  
©copyright BEGA-US 2016 Updated 01/19

Type:  
BEGA Product:  
Project:  
Voltage:  
Color:  
Options:  
Modified:



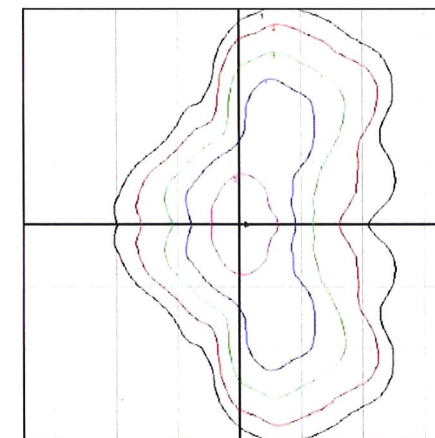
# BEGA

Photometric Filename: 77911.ies

TEST: BE3719  
TEST LAB: BEGA  
DATE: 5/6/2010  
LUMINAIRE: 77 911  
LAMP: 42.8W LED

### Characteristics

IES Classification	Type III
Longitudinal Classification	Medium
Lumens Per Lamp	N.A. (absolute)
Total Lamp Lumens	N.A. (absolute)
Luminaire Lumens	2548
Downward Total Efficiency	N.A.
Total Luminaire Efficiency	N.A.
Luminaire Efficacy Rating (LER)	51
Total Luminaire Watts	50
Ballast Factor	1.00
Upward Waste Light Ratio	0.00
Max. Cd.	2631.6 (75H, 67.5V)
Max. Cd. (<90 Vert.)	2631.6 (75H, 67.5V)
Max. Cd. (At 90 Deg. Vert.)	6.8 (0.3%Lum)
Max. Cd. (80 to <90 Deg. Vert.)	96.4 (3.8%Lum)
Cutoff Classification (deprecated)	N.A. (absolute)

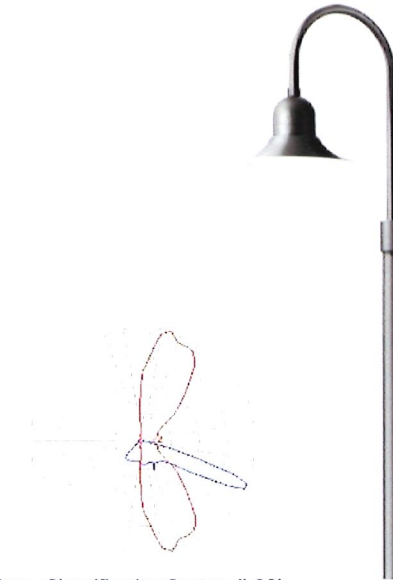


Mounting Height = 12 ft. Grid Spacing = 12 ft.

In the interest of product improvement, BEGA reserves the right to make technical changes without notice.

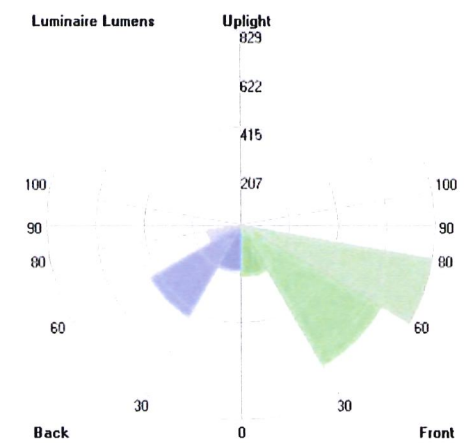
BEGA 1000 Bega Way, Carpinteria, CA 93013 (805)684-0533 Fax (805)566-9474 [www.bega-us.com](http://www.bega-us.com) © Copyright BEGA-US 2015

8/12/2015



### Lum. Classification System (LCS)

LCS Zone	Lumens	%Lamp	%Lum
FL (0-30)	220.0	N.A.	8.6
FM (30-60)	689.3	N.A.	27.1
FH (60-80)	829.0	N.A.	32.5
FVH(80-90)	10.6	N.A.	0.4
BL (0-30)	194.7	N.A.	7.6
BM (30-60)	448.0	N.A.	17.6
BH (60-80)	145.1	N.A.	5.7
BVH(80-90)	5.4	N.A.	0.2
UL (90-100)	1.8	N.A.	0.1
UH (100-180)	3.8	N.A.	0.2
Total	2547.7	N.A.	100.0
BUG Rating	B1-U1-G1		



# Lighting Cut sheet - E02

BEGA

## Aluminum pole - Round fixed tapered

### Application

A round, tapered, aluminum pole with a fixed base. Useful for mounting pole-top luminaires, floodlights, banners, or other accessories. Consult a licensed structural engineer when specifying. Poles must be unwrapped when delivered and should not be allowed to sit in their packaging.

### Materials & Specifications

Extruded aluminum pole shaft  
 A356 aluminum alloy anchor base heat-treated to T6 temper  
 Anchor bolts conform to ASTM F1554 Grade 55 with L bend on one end and galvanized minimum 12" on threaded end  
 Anchor bolts provided with (2) hex nuts and (2) flat washers  
 Aluminum nut covers  
 Covered handhole with hardware and grounding provisions provided  
 Wall thickness: 0.125"  
 Structural weight: 27 lbs

Maximum Luminaire Weight: 62 lbs

### Finish

All BEGA standard finishes are a matte, textured powder coat with a minimum 3 mil thickness. BEGA Unidure® finish, a fluoropolymer technology, provides superior fade protection in Black, Bronze, and Silver. BEGA standard White, as well as optionally available RAL and custom colors, are a polyester powder.

Available colors  Black (BLK)  White (WHT)  RAL:   
 Bronze (BRZ)  Silver (SLV)  CUS:

### Disclaimer

BEGA North America warrants the specific anchor bolts and pole combination according to the product number(s) and description(s) indicated on the submittal sheet. Structural changes to the pole requested by the customer, including changes to pole length, may affect the compatibility of the anchor bolts and corresponding poles. BEGA North America is not responsible for the incompatibility of the anchor bolts and poles resulting from such structural changes without review by the BEGA North America engineering department. This includes, but is not limited to, any labor charges, charges for replacement materials and shipping. For safety reasons, do not mount more than 50 lbs. to hinged poles and more than 62 lbs. to fixed poles. Pole capacities are based upon the provisions of AASHTO 2013 (LTS-6) and assume a max vertical eccentricity to the fixture of 2'-0" above the pole top. Adequate drainage must be provided in concrete foundation or grout. Do not seal the base of the pole. Due to structural reasons, do not install pole without fixture or other appropriate weight on the top.

Type:   
 BEGA Pole:   
 Location:   
 Quote or Sales Order:   
 Date:   
 Specifier:   
 Representative:   
 BEGA Luminaire:   
 Total Mounted EPA:   
 Total Mounted Weight:



### Aluminum pole - Round fixed tapered

	A	B	C	D	E	Anchorage
14 RFTS1	3"	14"	8 1/4"	4"	3"	B14RFTS1-AB

### Pole wind load rating

MPH	85	90	100	110	120	130	140	150
EPA"	4.3	3.6	2.6	1.9	1.3	0.9	0.6	0.4

Height is rounded to the nearest foot, for precise measurements see submittal drawing  
 Data above assumes grade level installation and a maximum luminaire weight of 62 lbs.

BEGA 1000 BEGA Way, Carpinteria, CA 93013 (805) 684-0533 info@bega-us.com

Due to the dynamic nature of lighting products and the associated technologies, data on this sheet is subject to change at the discretion of BEGA North America. For the most current technical data, please refer to bega-us.com  
 © copyright BEGA 2021 Updated 12/20/21



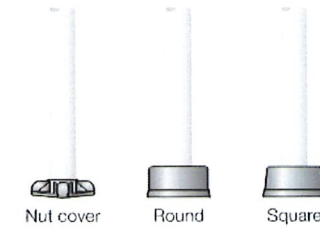
BEGA

## Accessories

### Base Cover

Standard pole is provided with nut covers.  
 See alternate base cover options below.

- Round
- Square

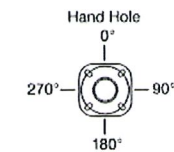


### Options

#### Power Receptacle - Standard Location

GFCI covers provided are intended for portable tools or other portable equipment connected to the outlet when attended. Wet location listed when cover is closed. Handhole must be 18" from GFCI.

- GFCI at default location  
 Orientation: 180°; Height: 36" A.F.G.  
 In-use cover



#### Modifications

Any changes or additions to BEGA North America's standard pole offering that are not listed as accessories or options are considered modifications. Should a modification be required, the below section is intended to help streamline the process during the initial design and specification. All modifications will need to be quoted and approved by BEGA North America prior to order placement.

#### Modified Pole Height:

#### Power Receptacle - Nonstandard Location

- GFCI at custom location  
 Orientation:   
 Height (min. 18" A.F.G.):   
 In-use cover

#### Handhole

Unless otherwise specified handhole will be located 18" A.F.G. between two anchor bolts.

- Handhole at custom location  
 Orientation:   
 Height:

#### Vibration Dampener

- Vibration dampener  
 Solution provided will vary depending on needs.

**Still not finding what you need?** Additional modifications may be available. Please contact your local BEGA representative to learn more about our modification capabilities.

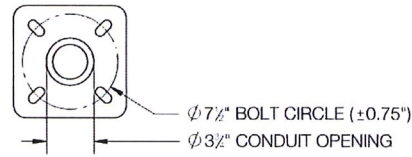
**Note:** Accessories, options, and modifications may require additional lead-time and increase cost. All details must be quoted and approved by BEGA North America prior to order placement.

BEGA 1000 BEGA Way, Carpinteria, CA 93013 (805) 684-0533 info@bega-us.com

Due to the dynamic nature of lighting products and the associated technologies, data on this sheet is subject to change at the discretion of BEGA North America. For the most current technical data, please refer to bega-us.com  
 © copyright BEGA 2021 Updated 12/20/21

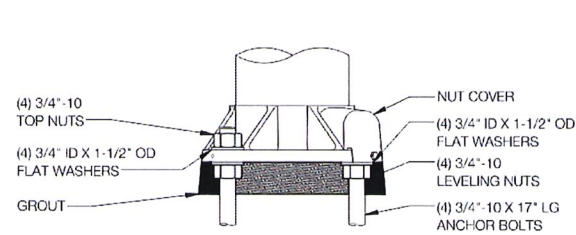
# Lighting Cut sheet - E02

REV	CHANGED BY	DESCRIPTION	DATE



**BASE DETAIL**

STANDARD 0.75 X 17.00 X 3.00  
ANCHOR BOLTS AND TEMPLATE  
SUPPLIED WITH POLE OR IN ADVANCE  
ANCHOR PART NUMBER: B14RFTS1-AB



**ANCHOR DETAIL**

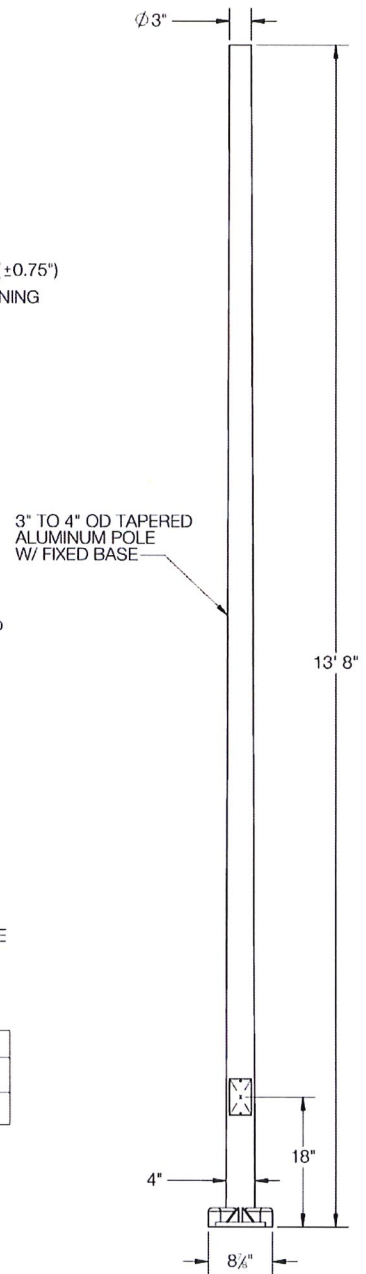
NOTE: ADEQUATE DRAINAGE  
MUST BE PROVIDED IN  
FOUNDATION OR GROUT. DO  
NOT SEAL THE BASE OF THE  
POLE.

CAUTION: RAISING OR LOWERING OF THE POLE REQUIRES ADEQUATE  
PREPARATION. DO NOT UNDERESTIMATE THE FORCE REQUIRED TO  
RAISE OR LOWER POLES WITH HEAVY LUMINAIRES AT THE TOP.

POLE WIND LOAD RATING, ALLOWS FOR 1.3 GUST FACTOR*								
MPH	85	90	100	110	120	130	140	150
EPA**	4.3	3.6	2.6	1.9	1.3	0.9	0.6	0.4

\*PER AASHTO 2013 WIND MAP  
\*\*DATA ABOVE ASSUMES GRADE LEVEL INSTALLATION  
AND A MAXIMUM LUMINAIRE WEIGHT OF 62 LBS.

**DISCLAIMER:**  
BEGA NORTH AMERICA WARRANTS THE SPECIFIC ANCHOR BOLTS & POLE  
COMBINATION ACCORDING TO THE PRODUCT NUMBER(S) AND DESCRIPTION(S)  
STRUCTURAL CHANGES TO THE POLE REQUESTED BY THE CUSTOMER INCLUDING  
CHANGES TO THE POLE LENGTH, MAY AFFECT THE COMPATIBILITY OF THE ANCHOR  
BOLTS AND CORRESPONDING POLES. BEGA NORTH AMERICA IS NOT RESPONSIBLE  
FOR THE INCOMPATIBILITY OF THE ANCHOR BOLTS AND POLES RESULTING FROM SUCH  
STRUCTURAL CHANGES WITHOUT REVIEW BY THE BEGA NORTH AMERICA ENGINEERS  
DEPARTMENT. THIS INCLUDES BUT IS NOT LIMITED TO; ANY LABOR CHARGES,  
CHARGES FOR REPLACEMENT MATERIALS, AND SHIPPING. FOR SAFETY REASONS, DO  
NOT MOUNT MORE THAN MORE THAN 50 LBS. TO HINGED POLES AND MORE THAN 62  
LBS. TO FIXED POLES. POLE CAPACITIES ARE BASED UPON THE PROVISIONS OF  
AASHTO 2013 (1.15-6) AND ASSUME A MAX VERTICAL ECCENTRICITY TO THE FIXTURE OF  
2'-0" ABOVE THE POLE TOP. ADEQUATE DRAINAGE MUST BE PROVIDED IN CONCRETE  
FOUNDATION OR GROUT. DO NOT SEAL THE BASE OF THE POLE. DUE TO STRUCTURAL  
REASONS, DO NOT INSTALL POLE WITHOUT FIXTURE OR OTHER APPROPRIATE WEIGHT  
ON THE TOP.



<b>BEGA</b>		1000 BEGA Way, Carpinteria, California 93013		P (805) 684 0533 - www.bega-us.com	
APPROVED:	DATE:	DESCRIPTION:	ALUMINUM POLE ROUND FIXED TAPERED		
TYPE:		SIZE	PART NO.	REV	
PROPRIETARY AND CONFIDENTIAL		B	14 RFTS1		
THE INFORMATION CONTAINED IN THIS DRAWING IS THE SOLE PROPERTY OF BEGA NORTH AMERICA, INC. ANY REPRODUCTION OR PARTIAL OR WHOLE WITHOUT THE WRITTEN PERMISSION OF BEGA NORTH AMERICA, INC. IS PROHIBITED.		NOT TO SCALE	12/5/2021	SHEET 1 OF 1	

# Lighting Cut sheet - E03

## LED pole-top luminaires - Asymmetrical light distribution

BEGA

### Application

LED pole-top luminaire with asymmetrical light distribution designed for the illumination of parking areas and roadways. Tool-less entry with hinged door for ease of maintenance. Provided with slip fitter to fit 3" O.D. poles.

### Materials

Luminaire housing and pole fitter constructed of die-cast marine grade, copper free (≤0.3% copper content) A360.0 aluminum alloy  
Clear safety glass with anti-reflective coating for increased transmission  
Reflector made of pure anodized aluminum  
Silicone applied robotically to casting, plasma treated for increased adhesion  
High temperature silicone gasket  
Mechanically captive stainless steel fasteners

**NRTL** listed to North American Standards, suitable for wet locations  
Protection class IP66

**Weight:** 19.0 lbs.

**EPA (Effective projection area):** 0.75 sq. ft.

### Electrical

Operating voltage	120-277VAC
Minimum start temperature	-30° C
LED module wattage	47.2W
System wattage	56.0W
Controllability	0-10V dimmable
Color rendering index	Ra > 80
Luminaire lumens	6,855 lumens (3000K)
Lifetime at Ta = 15° C	> 500,000 h (L70)
Lifetime at Ta = 50° C	192,000 h (L70)

### LED color temperature

- 4000K - Product number + **K4**
- 3500K - Product number + **K35**
- 3000K - Product number + K3**
- 2700K - Product number + **K27**

**BEGA** can supply you with suitable LED replacement modules for up to 20 years after the purchase of LED luminaires - see website for details

### Finish

All BEGA standard finishes are matte, textured polyester powder coat with minimum 3 mil thickness.

Available colors	Black (BLK)	White (WHT)	RAL:
	Bronze (BRZ)	Silver (SLV)	<b>CUS: Graphite Grey</b>

Type:

BEGA Product:

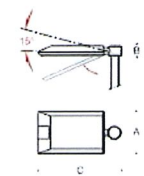
Project:

Modified:

### Available Accessories

- IMS-L2** Internal motion sensor - 8' mounting height
- IMS-L3** Internal motion sensor - 20' mounting height
- IMS-L4** Internal motion sensor - 40' mounting height
- narrow
- IMS-L7** Internal motion sensor - 40' mounting height
- wide
- FSIR-100** Configuration tool

See individual accessory spec sheet for details.



### Pole-top luminaire - Asymmetrical light distribution

LED	A	B	C
<b>99522</b>	<b>47.2W</b>	13%	3 28

Recommended for use with 2 1/2" to 3 1/2" poles

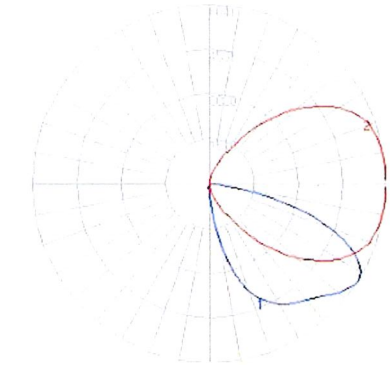
**BEGA** 1000 BEGA Way, Carpinteria, CA 93013 (805)684-0533 info@bega-us.com

Due to the dynamic nature of lighting products and the associated technologies, luminaire data on this sheet is subject to change at the discretion of BEGA North America. For the most current technical data, please refer to bega-us.com Updated 01/17/19

# BEGA

Photometric Filename: 99522K3.IES

TEST: BE\_99522  
TEST LAB: BEGA  
DATE: 11/30/2016  
LUMINAIRE: 99 522K3  
LAMP: 47.2W LED



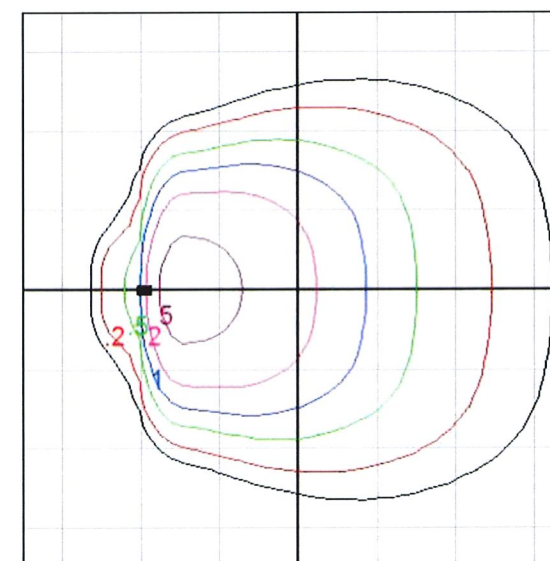
### Characteristics

IES Classification	<b>Type IV</b>
Longitudinal Classification	Very Short
Lumens Per Lamp	N.A. (absolute)
Total Lamp Lumens	N.A. (absolute)
Luminaire Lumens	6855
Downward Total Efficiency	N.A.
Total Luminaire Efficiency	N.A.
Luminaire Efficacy Rating (LER)	122
Total Luminaire Watts	56
Ballast Factor	1.00
Upward Waste Light Ratio	0.00
Max. Cd.	6040.8 (360H, 57.5V)
Max. Cd. (<90 Vert.)	6040.8 (360H, 57.5V)
Max. Cd. (At 90 Deg. Vert.)	0 (0.0%Lum)
Max. Cd. (80 to <90 Deg. Vert.)	1267.1 (18.5%Lum)
Cutoff Classification (deprecated)	N.A. (absolute)

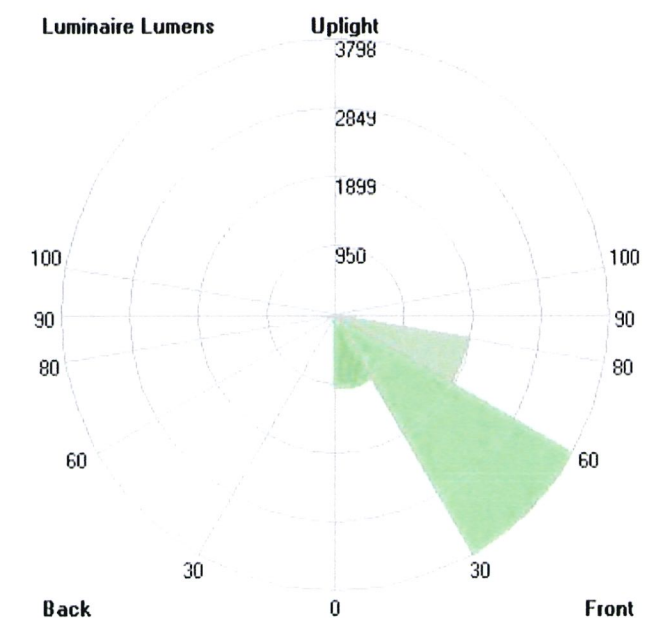
### Lum. Classification System (LCS)

LCS Zone	Lumens	%Lamp	%Lum
FL (0-30)	1009.9	N.A.	14.7
FM (30-60)	3798.1	N.A.	55.4
FH (60-80)	1858.0	N.A.	27.1
FVH (80-90)	77.0	N.A.	1.1
BL (0-30)	68.4	N.A.	1.0
BM (30-60)	35.8	N.A.	0.5
BH (60-80)	6.5	N.A.	0.1
BVH (80-90)	1.3	N.A.	0.0
UL (90-100)	0.0	N.A.	0.0
UH (100-180)	0.0	N.A.	0.0
Total	6855.0	N.A.	100.0

**BUG Rating** **B0-U0-G2**



Mounting Height = 19ft 8in (Pole 1908HR)  
Grid Spacing = 15 ft.



In the interest of product improvement, BEGA reserves the right to make technical changes without notice.

**BEGA** 1000 Bega Way, Carpinteria, CA 93013 (805)684-0533 Fax (805)566-9474 www.bega-us.com © Copyright BEGA-US 2019

8/30/2019

# Lighting Cut sheet - E03

BEGA

## Aluminum pole - Round fixed tapered

### Application

A round, tapered, aluminum pole with a fixed base. Useful for mounting pole-top luminaires, floodlights, banners, or other accessories. Consult a licensed structural engineer when specifying. Poles must be unwrapped when delivered and should not be allowed to sit in their packaging.

### Materials & Specifications

Extruded aluminum pole shaft  
 A356 aluminum alloy anchor base heat-treated to T6 temper  
 Anchor bolts conform to ASTM F1554 Grade 55 with L bend on one end and galvanized minimum 12" on threaded end  
 Anchor bolts provided with (2) hex nuts and (2) flat washers  
 Aluminum nut covers  
 Covered handhole with hardware and grounding provisions provided  
 Wall thickness: 0.125"  
 Structural weight: 42 lbs

Maximum Luminaire Weight: 62 lbs

### Finish

All BEGA standard finishes are a matte, textured powder coat with a minimum 3 mil thickness. BEGA Unidure® finish, a fluoropolymer technology, provides superior fade protection in Black, Bronze, and Silver. BEGA standard White, as well as optionally available RAL and custom colors, are a polyester powder.

Available colors  Black (BLK)  White (WHT)  RAL:  Bronze (BRZ)  Silver (SLV)  **CUS: Graphite Grey**

### Disclaimer

BEGA North America warrants the specific anchor bolts and pole combination according to the product number(s) and description(s) indicated on the submittal sheet. Structural changes to the pole requested by the customer, including changes to pole length, may affect the compatibility of the anchor bolts and corresponding poles. BEGA North America is not responsible for the incompatibility of the anchor bolts and poles resulting from such structural changes without review by the BEGA North America engineering department. This includes, but is not limited to, any labor charges, charges for replacement materials and shipping. For safety reasons, do not mount more than 50 lbs. to hinged poles and more than 62 lbs. to fixed poles. Pole capacities are based upon the provisions of AASHTO 2013 (LTS-6) and assume a max vertical eccentricity to the fixture of 2'-0" above the pole top. Adequate drainage must be provided in concrete foundation or grout. Do not seal the base of the pole. Due to structural reasons, do not install pole without fixture or other appropriate weight on the top.

Type:   
 BEGA Pole:   
 Location:   
 Quote or Sales Order:   
 Date:   
 Specifier:   
 Representative:   
 BEGA Luminaire:   
 Total Mounted EPA:   
 Total Mounted Weight:



### Aluminum pole - Round fixed tapered

	A	B	C	D	E	Anchorage
<b>20 RFTS1</b>	3'	<b>23"</b>	9 1/4"	5"	3'	<b>B20RFTS1-AB</b>

### Pole wind load rating

MPH	85	90	100	110	120	130	140	150
EPA"	4.5	3.7	2.5	1.7	1.1	0.7	0.4	0.2

Height is rounded to the nearest foot, for precise measurements see submittal drawing.  
 Data above assumes grade level installation and a maximum luminaire weight of 62 lbs.

BEGA 1000 BEGA Way, Carpinteria, CA 93013 (805) 684-0533 info@bega-us.com

Due to the dynamic nature of lighting products and the associated technologies, data on this sheet is subject to change at the discretion of BEGA North America. For the most current technical data, please refer to bega-us.com. Updated 12/20/21



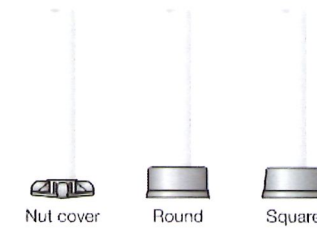
BEGA

## Accessories

### Base Cover

Standard pole is provided with nut covers. See alternate base cover options below.

- Round
- Square

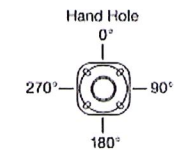


### Options

#### Power Receptacle - Standard Location

GFCI covers provided are intended for portable tools or other portable equipment connected to the outlet when attended. Wet location listed when cover is closed. Handhole must be 18" from GFCI.

- GFCI at default location
  - Orientation: 180°; Height: 36" A.F.G.
  - In-use cover



#### Modifications

Any changes or additions to BEGA North America's standard pole offering that are not listed as accessories or options are considered modifications. Should a modification be required, the below section is intended to help streamline the process during the initial design and specification. All modifications will need to be quoted and approved by BEGA North America prior to order placement.

#### Modified Pole Height:

#### Power Receptacle - Nonstandard Location

- GFCI at custom location
  - Orientation:
  - Height (min. 18" A.F.G.):
  - In-use cover

#### Handhole

Unless otherwise specified handhole will be located 18" A.F.G. between two anchor bolts.

- Handhole at custom location
  - Orientation:
  - Height:

#### Vibration Dampener

- Vibration dampener
  - Solution provided will vary depending on needs.

**Still not finding what you need?** Additional modifications may be available. Please contact your local BEGA representative to learn more about our modification capabilities.

**Note:** Accessories, options, and modifications may require additional lead-time and increase cost. All details must be quoted and approved by BEGA North America prior to order placement.

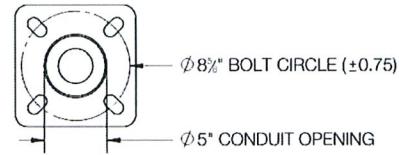
BEGA 1000 BEGA Way, Carpinteria, CA 93013 (805) 684-0533 info@bega-us.com

Due to the dynamic nature of lighting products and the associated technologies, data on this sheet is subject to change at the discretion of BEGA North America. For the most current technical data, please refer to bega-us.com. Updated 12/20/21



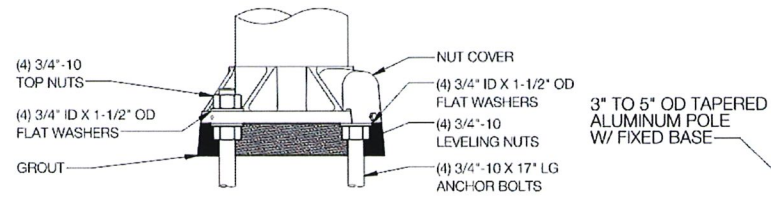
# Lighting Cut sheet - E03

REV	CHANGED BY	DESCRIPTION	DATE



BASE DETAIL

STANDARD 0.75 X 17.00 X 3.00  
ANCHOR BOLTS AND TEMPLATE  
SUPPLIED WITH POLE OR IN ADVANCE  
ANCHOR PART NUMBER: B20RFTS1-AB



ANCHOR DETAIL

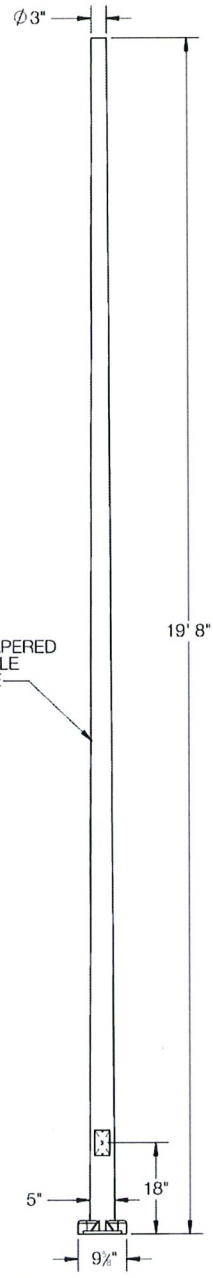
NOTE: ADEQUATE DRAINAGE  
MUST BE PROVIDED IN  
FOUNDATION OR GROUT. DO  
NOT SEAL THE BASE OF THE  
POLE.

CAUTION: RAISING OR LOWERING OF THE POLE REQUIRES ADEQUATE  
PREPERATION. DO NOT UNDERESTIMATE THE FORCE REQUIRED TO  
RAISE OR LOWER POLES WITH HEAVY LUMINAIRES AT THE TOP.

POLE WIND LOAD RATING, ALLOWS FOR 1.3 GUST FACTOR*								
MPH	85	90	100	110	120	130	140	150
EPA**	4.5	3.7	2.5	1.7	1.1	0.7	0.4	0.2

\*PER AASHTO 2013 WIND MAP  
\*\*DATA ABOVE ASSUMES GRADE LEVEL INSTALLATION  
AND A MAXIMUM LUMINAIRE WEIGHT OF 62 LBS.

DISCLAIMER:  
BEGA NORTH AMERICA WARRANTS THE SPECIFIC ANCHOR BOLTS & POLE  
COMBINATION ACCORDING TO THE PRODUCT NUMBERS AND DESCRIPTIONS.  
STRUCTURAL CHANGES TO THE POLE REQUESTED BY THE CUSTOMER INCLUDING  
CHANGES TO THE POLE LENGTH, MAY AFFECT THE COMPATIBILITY OF THE ANCHOR  
BOLTS AND CORRESPONDING POLES. BEGA NORTH AMERICA IS NOT RESPONSIBLE  
FOR THE INCOMPATIBILITY OF THE ANCHOR BOLTS AND POLES RESULTING FROM SUCH  
STRUCTURAL CHANGES WITHOUT REVIEW BY THE BEGA NORTH AMERICA ENGINEERS  
DEPARTMENT. THIS INCLUDES BUT IS NOT LIMITED TO; ANY LABOR CHARGES,  
CHARGES FOR REPLACEMENT MATERIALS, AND SHIPPING. FOR SAFETY REASONS, DO  
NOT MOUNT MORE THAN MORE THAN 60 LBS. TO HINGED POLES AND MORE THAN 62  
LBS. TO FIXED POLES. POLE CAPACITIES ARE BASED UPON THE PROVISIONS OF  
AASHTO 2013 (11.5-6) AND ASSUME A MAX VERTICAL ECCENTRICITY TO THE FIXTURE OF  
2'-0" ABOVE THE POLE TOP. ADEQUATE DRAINAGE MUST BE PROVIDED IN CONCRETE  
FOUNDATION OR GROUT. DO NOT SEAL THE BASE OF THE POLE. DUE TO STRUCTURAL  
REASONS, DO NOT INSTALL POLE WITHOUT FIXTURE OR OTHER APPROPRIATE WEIGHT  
ON THE TOP.



**BEGA**  
1000 BEGA Way, Carpinteria, California 93013 P (805) 694-0533 - www.bega-us.com

APPROVED: \_\_\_\_\_ DATE: \_\_\_\_\_ DESCRIPTION: ALUMINUM POLE  
TYPE: \_\_\_\_\_ ROUND FIXED TAPERED

PROPRIETARY AND CONFIDENTIAL  
THIS DRAWING OR ANY PART HEREOF IS THE SOLE PROPERTY  
OF BEGA NORTH AMERICA, INC.  
ANY REPRODUCTION IN WHOLE OR IN PART WITHOUT THE WRITTEN  
PERMISSION OF BEGA NORTH AMERICA, INC. IS PROHIBITED.

SIZE	PART NO.	REV
B	20 RFTS1	
NOT TO SCALE	12/5/2021	SHEET 1 OF 1

# Lighting Cut sheet - E04

## Shielded LED bollard - asymmetric

BEGA

### Application

An LED bollard with shielded asymmetric light distribution. Designed for effective lighting of landscapes, pathways, and open spaces. The fully shielded design provides visual comfort while illuminating ground surfaces. Provided with mounting system that allows the luminaire to be adjusted independent of anchor bolt orientation.

### Materials

Luminaire housing constructed of die-cast and extruded marine grade, copper free ( $\leq 0.3\%$  copper content) A360.0 aluminum alloy  
Clear safety glass  
Reflector made of pure anodized aluminum  
High temperature silicone gasket  
Mechanically captive stainless steel fasteners  
Mounting plate constructed of heavy cast aluminum

NRTL listed to North American Standards, suitable for wet locations  
Protection class IP65  
Weight: 14.5 lbs

### Electrical

Operating voltage	120-277V AC
Minimum start temperature	-30° C
Maximum ambient temperature	90° C
LED module wattage	11.6W
System wattage	14.5W
Controllability	0-10V
Color rendering index	Ra > 80
Luminaire lumens	1475 lumens (4000K)
LED service life (L70)	60,000 hours

### LED color temperature

- 4000K - Product number + **K4 (EXPRESS)**
- 3500K - Product number + **K35**
- 3000K - Product number + **K3 (EXPRESS)**
- 2700K - Product number + **K27**

### Wildlife friendly amber LED - Optional

Luminaire is optionally available with a narrow bandwidth, amber LED source (585-600nm) approved by the FWC. This light output is suggested for use within close proximity to sea turtle nesting and hatching habitats. Electrical and control information may vary from standard luminaire.

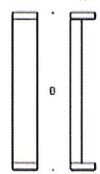
LED module wattage	17.6W (Amber)
System wattage	22.0W (Amber)
Luminaire lumens	574 lumens (Amber)

BEGA can supply you with suitable LED replacement modules for up to 20 years after the purchase of LED luminaires - see website for details

### Finish

All BEGA standard finishes are matte, textured polyester powder coat with minimum 3 mil thickness.

- Available colors
- Black (BLK)
  - White (WHT)
  - RAL:  Graphite Grey
  - Bronze (BRZ)
  - Silver (SLV)



### Shielded LED bollard - asymmetric

	LED	A	B	Anchorage
<b>99058</b>	11.6W	7 1/2"	39 1/2"	<b>79817</b>

BEGA 1000 BEGA Way, Carpinteria, CA 93013 (805)684-0533 info@bega-us.com

Due to the dynamic nature of lighting products and the associated technologies, luminaire data on this sheet is subject to change at the discretion of BEGA North America. For the most current technical data, please refer to bega-us.com. © copyright BEGA 2018 Updated 10/20/20

Type:

BEGA Product:

Project:

Modified:

### Mounting Accessories

- 79817** Anchorage Kit
- 70895** Direct burial anchorage

### Available options

- FSC** Fusing
- AMB** Amber LED
- FPRO** Factory Programmed Reduced output
- EMPK** Integral Emergency Battery Pack
- AWB** Asymmetric Wide Beam

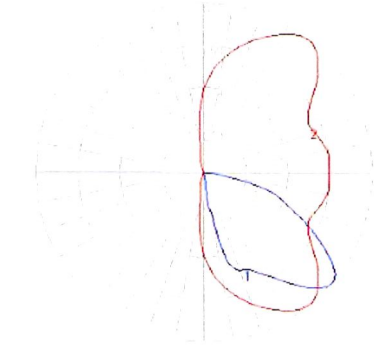
See individual accessory spec sheet for details.



# BEGA

Photometric Filename: 99058K3\_BEGA\_IES.IES

TEST: BE\_99058K4  
TEST LAB: BEGA  
DATE: 11/23/2016  
LUMINAIRE: 99 058K3  
LAMP: 11.6W LED



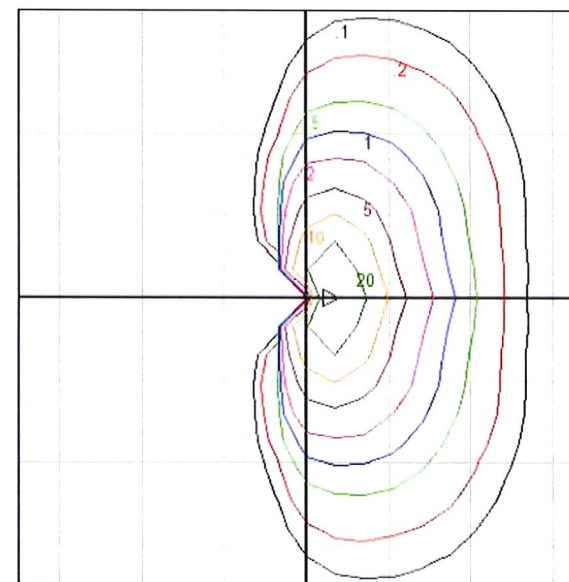
### Characteristics

IES Classification	Type III
Longitudinal Classification	Very Short
Lumens Per Lamp	N.A. (absolute)
Total Lamp Lumens	N.A. (absolute)
Luminaire Lumens	1414
Downward Total Efficiency	N.A.
Total Luminaire Efficiency	N.A.
Luminaire Efficacy Rating (LER)	102
Total Luminaire Watts	14.5
Ballast Factor	1.00
Upward Waste Light Ratio	0.00
Max. Cd.	877.171 (310H, 50V)
Max. Cd. (<90 Vert.)	877.171 (310H, 50V)
Max. Cd. (At 90 Deg. Vert.)	1.649 (0.1%Lum)
Max. Cd. (80 to <90 Deg. Vert.)	1586.65 (11.1%Lum)
Cutoff Classification (deprecated)	N.A. (absolute)

### Lum. Classification System (LCS)

LCS Zone	Lumens	%Lamp	%Lum
FL (0-30)	188.6	N.A.	13.3
FM (30-60)	767.0	N.A.	54.3
FH (60-80)	358.6	N.A.	25.4
FVH (80-90)	12.0	N.A.	0.8
BL (0-30)	12.6	N.A.	0.9
BM (30-60)	46.5	N.A.	3.3
BH (60-80)	27.3	N.A.	1.9
BVH (80-90)	0.9	N.A.	0.1
UL (90-100)	0.1	N.A.	0.0
UH (100-180)	0.0	N.A.	0.0
Total	1428.1	N.A.	100.0

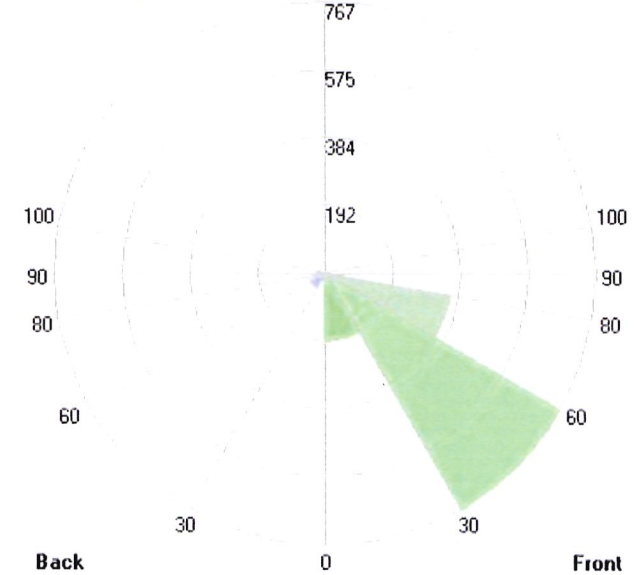
BUG Rating **B0-U1-G1**



Grid Spacing = 5 ft.

Luminaire Lumens

Uplight

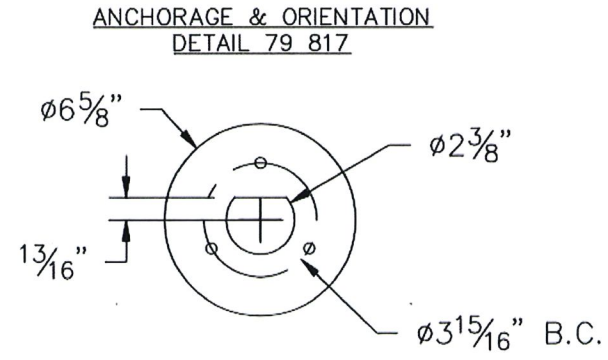
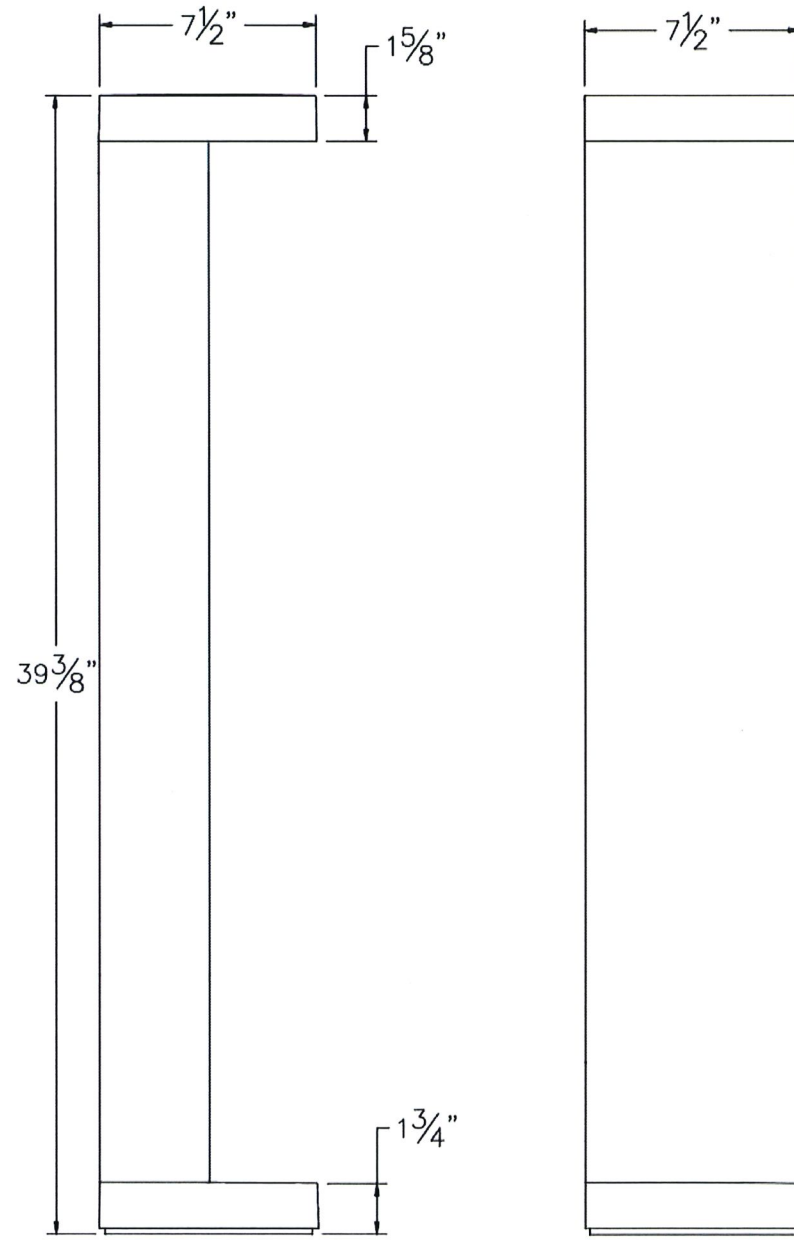


In the interest of product improvement, BEGA reserves the right to make technical changes without notice.

BEGA 1000 Bega Way, Carpinteria, CA 93013 (805)684-0533 Fax (805)566-9474 www.bega-us.com © Copyright BEGA-US 2020

10/20/2020

NOTE: LUMINAIRE 99 058 – SEE SPECIFICATIONS



TYPE: \_\_\_\_\_

**SUBMITTAL APPROVAL**

APPROVED BY: \_\_\_\_\_ DATE: \_\_\_\_\_

REV.	DATE	DESCRIPTION

CAT NO.: LUMINAIRE #99 058

PROJECT: \_\_\_\_\_

LOCATION: \_\_\_\_\_

DRAWN: PDM DATE: 09/05/19 File Name: 99\_058.dxf

**BEGA**

1000 Bega Way  
Carpinteria, Ca. 93013  
(805) 684-0533

This print contains confidential information which is the property of BEGA U.S. By acceptance this information, the borrower agrees that it will not be used for any other purpose other than that which is was loaned.

