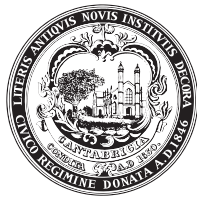


# CURBSIDE COMPOST PICKUP

It's easy. It's free.



Start Composting Today!



## Why Compost?

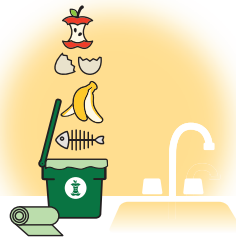
Composting helps reduce trash in landfills. Food scraps are processed into fertilizer and clean energy.



## It's Easy!

### FILL IT UP.

Line your kitchen bin with a compostable bag. Fill the bin with food scraps as you prepare meals and clean up.



### DROP IT IN. (AND LOCK IT)

Tie the bag and drop it in your curbside cart. Lock the cart to keep critters out.



### SET IT OUT.

Roll your cart to the curb for pickup with your trash and recycling.



## Composting Tips



### KEEP IT LOCKED.

Lock your curbside bin to keep critters out.



### KEEP IT CLEAN.

Bring food scraps out to your curbside cart every few days to minimize odors. Rinse bin and cart as needed and allow them to dry. Your kitchen bin is dishwasher safe.



### KEEP IT HANDY.

Store your bin on top of your counter, or under your kitchen sink.



more information: más información:  
mais informações: plis enfòmasyon :  
更多資訊: 十風叫乙 叫乙叫:  
[CambridgeMA.Gov/Compost](http://CambridgeMA.Gov/Compost)

Phone: 617.349.4800 Email: [Compost@CambridgeMA.Gov](mailto:Compost@CambridgeMA.Gov)

# What can you compost?

## FRUITS & VEGETABLES



## MEATS, BONES & SHELLS



## TEA BAGS, COFFEE GROUNDS & FILTERS



## DAIRY



## CUT FLOWERS



## BREADS & GRAINS



## NAPKINS & PAPER TOWELS



## What can **NOT** be composted?

- Pet Waste or Diapers
- Yard Waste

- Liquids
- Plastic Bags

## FAQs

(FREQUENTLY ASKED QUESTIONS)



### 1 WHY SHOULD I COMPOST?

Composting reduces the amount of trash in landfills. Because food scraps make up 40% of our trash, keeping them out helps the city reach our waste reduction goals.

### 2 SHOULD I BE CONCERNED ABOUT CRITTERS AND ODORS?

The curbside cart is made of thick plastic and has a locking lid to keep rodents out. The kitchen bin has a ventilated lid to allow moisture and heat to escape, minimizing odors.

### 3 WHY SHOULD I USE COMPOSTABLE BAGS?

Using compostable bags inside your kitchen bin helps keep both bins clean and dry. Most residents replace the bag every 3–4 days. For information on where to buy compostable bags, visit: [CambridgeMA.Gov/Compost](http://CambridgeMA.Gov/Compost)

### 4 I USE A GARBAGE DISPOSAL. SHOULD I COMPOST INSTEAD?

We strongly recommend residents compost instead to reduce the risk of costly sewer backups.

### 5 ARE OTHER COMMUNITIES COMPOSTING?

Yes! Many cities already compost, including Seattle, San Francisco and New York City. Cambridge is leading the way in New England to offer city-ide compost pickup!