

PETER
QUINN
ARCHI
TECTS

ARCHITECTURE
PLANNING
COMMUNITY DESIGN

PETER QUINN ARCHITECTS LLC
259 ELM STREET, SUITE 301
SOMERVILLE, MA 02144
PH 617-354-3989

SEAL

CONSULTANT

PROJECT

PROPOSED NEW
TENANT ENTRY &
2ND FLOOR
BALCONY

57 JFK STREET
CAMBRIDGE, MA

PREPARED FOR

CRIMSON GALERIA, LP

166 BEACON ST
BROOKLINE, MA 02446

DRAWING TITLE

TITLE SHEET

SCALE AS NOTED

REVISION	DATE
PB APPLIC	REV 9/26/23
PB APPLIC	REV 8/29/23
DRAWN BY LD	REVIEWED BY PQ

SHEET

A1

57 JFK STREET- CAMBRIDGE, MA

AMENDMENT TO APPROVED PB-390:

PROPOSED NEW ENTRY TO BASEMENT TENANT SPACE ON JFK STREET
PROPOSED EXTERIOR BALCONY AT SECOND FLOOR ON JFK STREET

8/11/23

REVISED 8/29/23

REVISION TWO 9/26/23

PROPOSED RETAIL ENTRANCE CANOPY REMOVAL

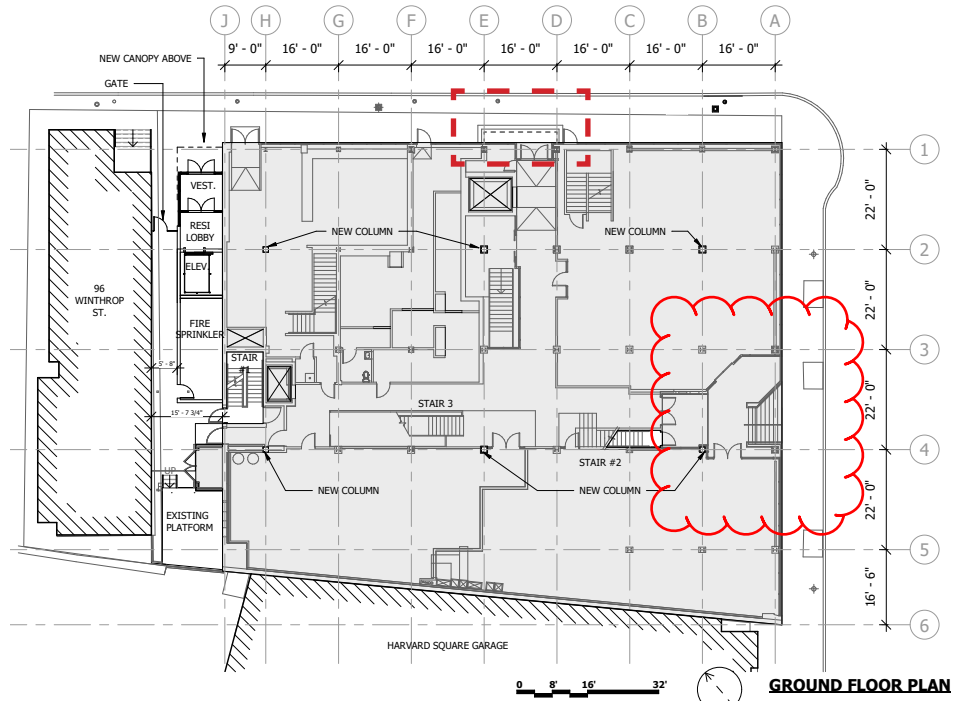


FIGURE 1

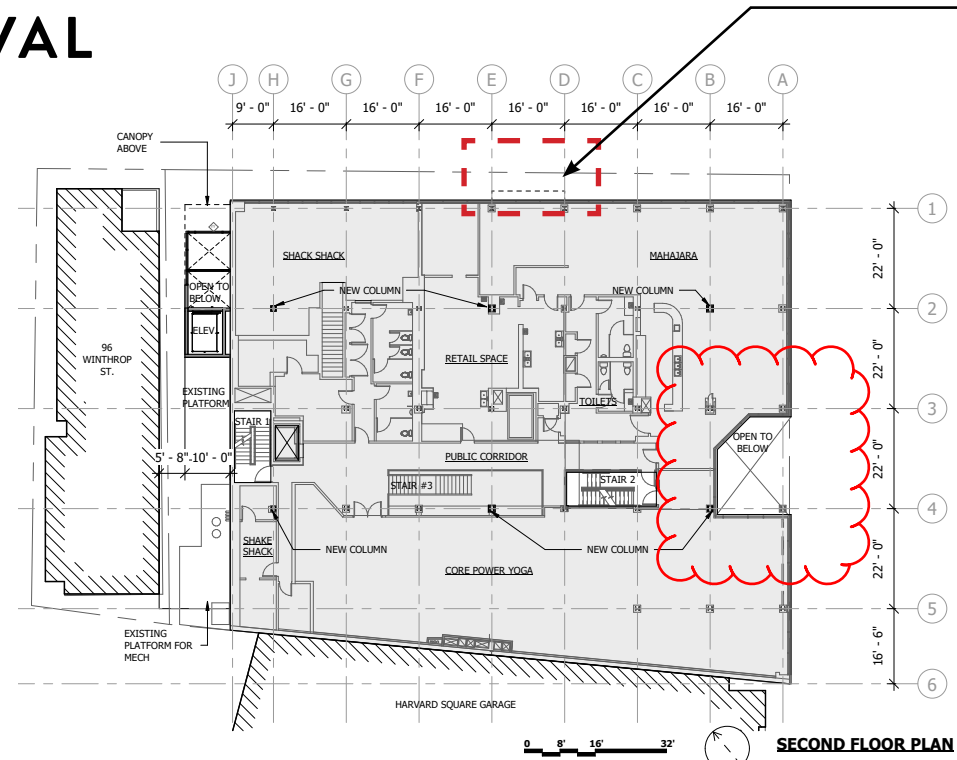


FIGURE 2

PB APPROVED PLANS

PROPOSED RETAIL ENTRY CANOPY TO BE REMOVED FROM PLAN AND . SECTION DRAWINGS TO COORDINATE WITH 3D MODEL VIEWS

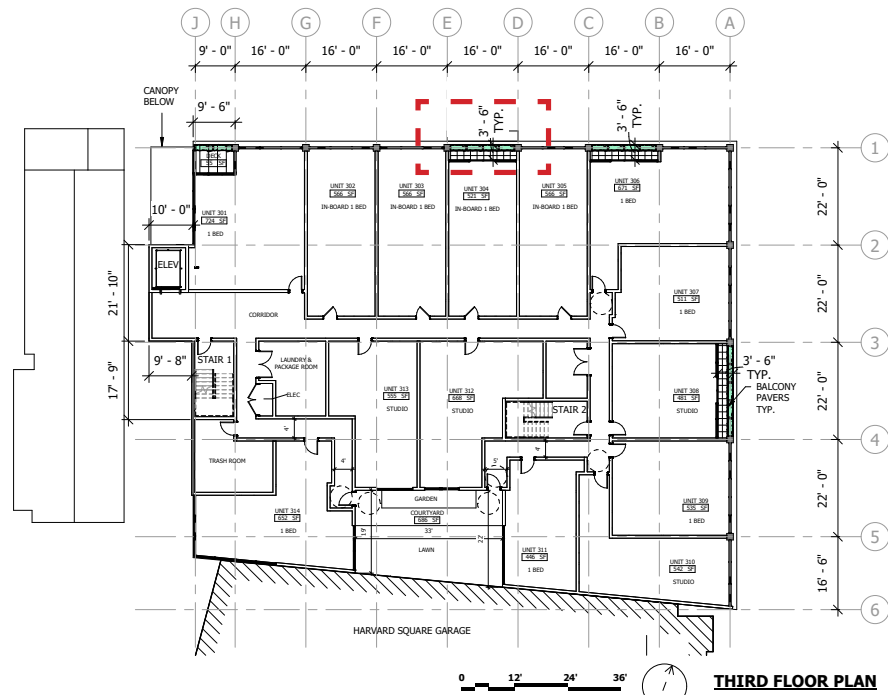


FIGURE 3

FLOOR AREA NET.		
Name	Type	Area
UNIT 301	1 BED	724
UNIT 302	IN-BOARD 1 BED	566
UNIT 303	IN-BOARD 1 BED	566
UNIT 304	IN-BOARD 1 BED	521
UNIT 305	IN-BOARD 1 BED	566
UNIT 306	1 BED	671
UNIT 307	1 BED	511
UNIT 308	STUDIO	481
UNIT 309	1 BED	535
UNIT 310	STUDIO	542
UNIT 311	1 BED	446
UNIT 312	STUDIO	668
UNIT 313	STUDIO	555
UNIT 314	1 BED	652
UNIT 401	1 BED	855
UNIT 402	IN-BOARD 1 BED	537
UNIT 403	IN-BOARD 1 BED	581
UNIT 404	IN-BOARD 1 BED	520
UNIT 405	STUDIO	475
UNIT 406	1 BED	726
UNIT 407	STUDIO	413
UNIT 408	STUDIO	362
UNIT 409	STUDIO	458
UNIT 410	1 BED	431
UNIT 411	1 BED	629
UNIT 412	STUDIO	520
UNIT 413	2 BED	1,047
UNIT 501	1 BED	724
UNIT 502	STUDIO	520
UNIT 503	STUDIO	475
UNIT 504	STUDIO	398
UNIT 505	1 BED	702
UNIT 506	STUDIO	435
UNIT 507	1 BED	580
UNIT 508	1 BED	505
UNIT 509	1 BED	629
UNIT 510	STUDIO	520
UNIT 511	2 BED	1,047
Grand total:	38	22,091

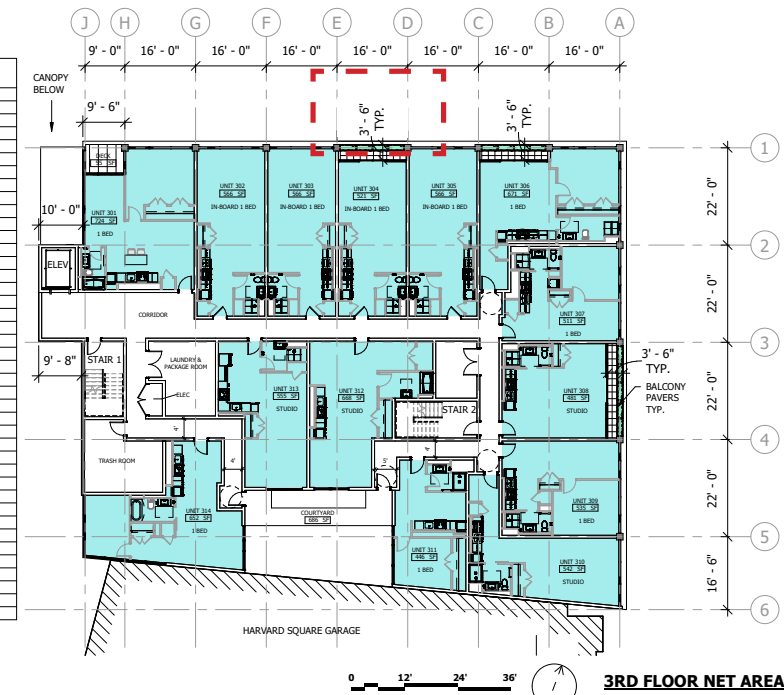
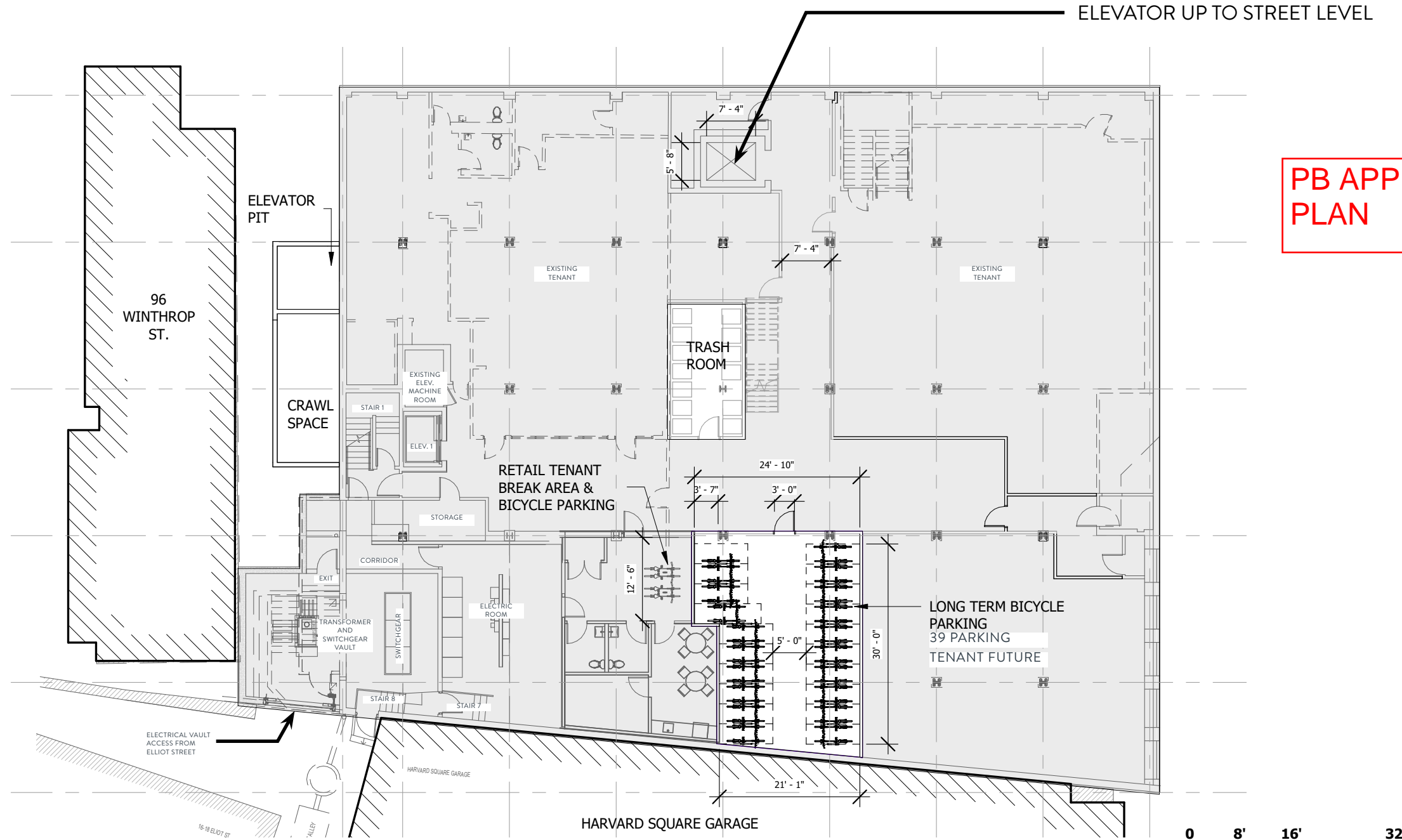
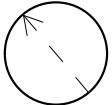


FIGURE 4

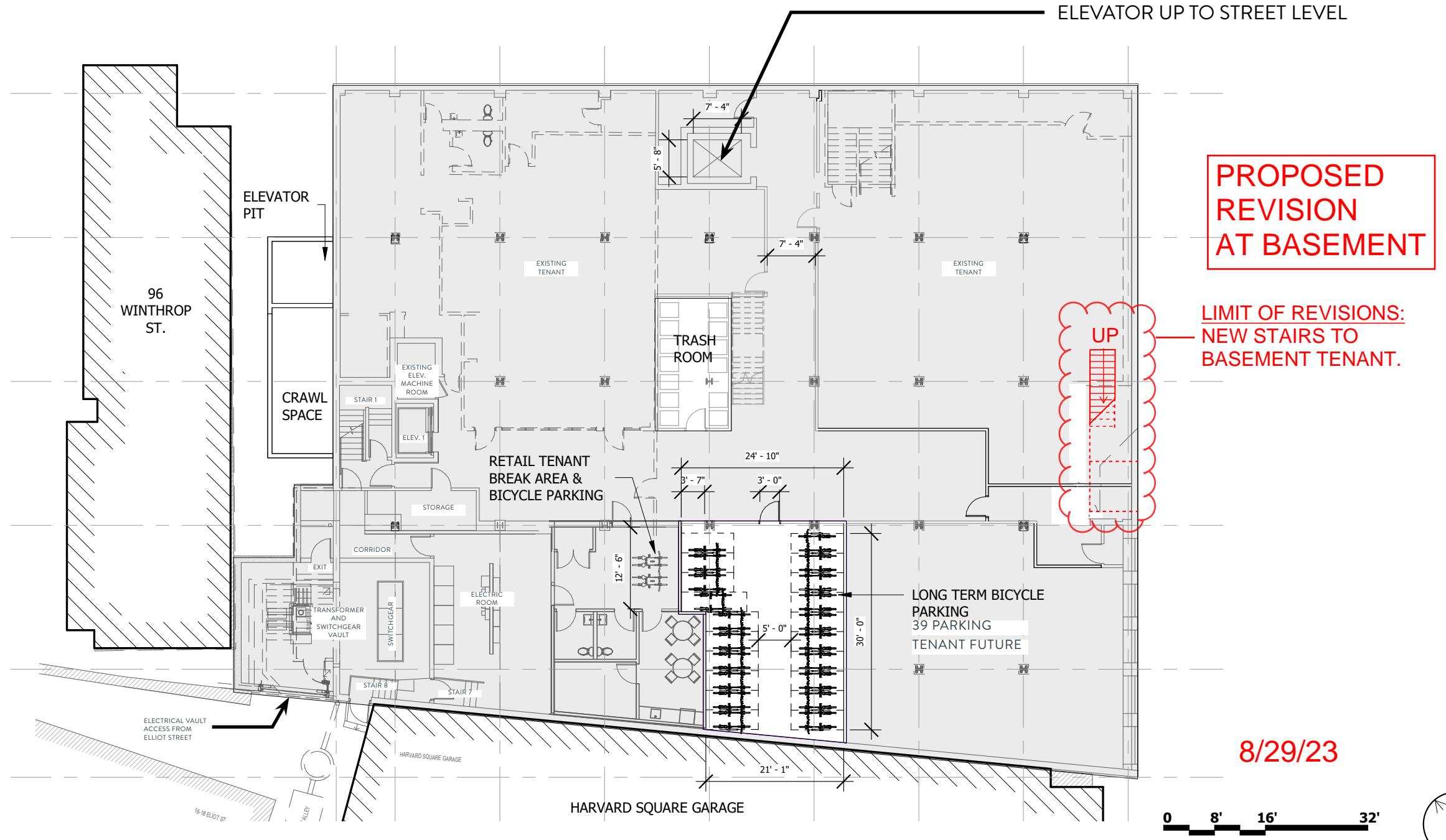
BASEMENT PLAN



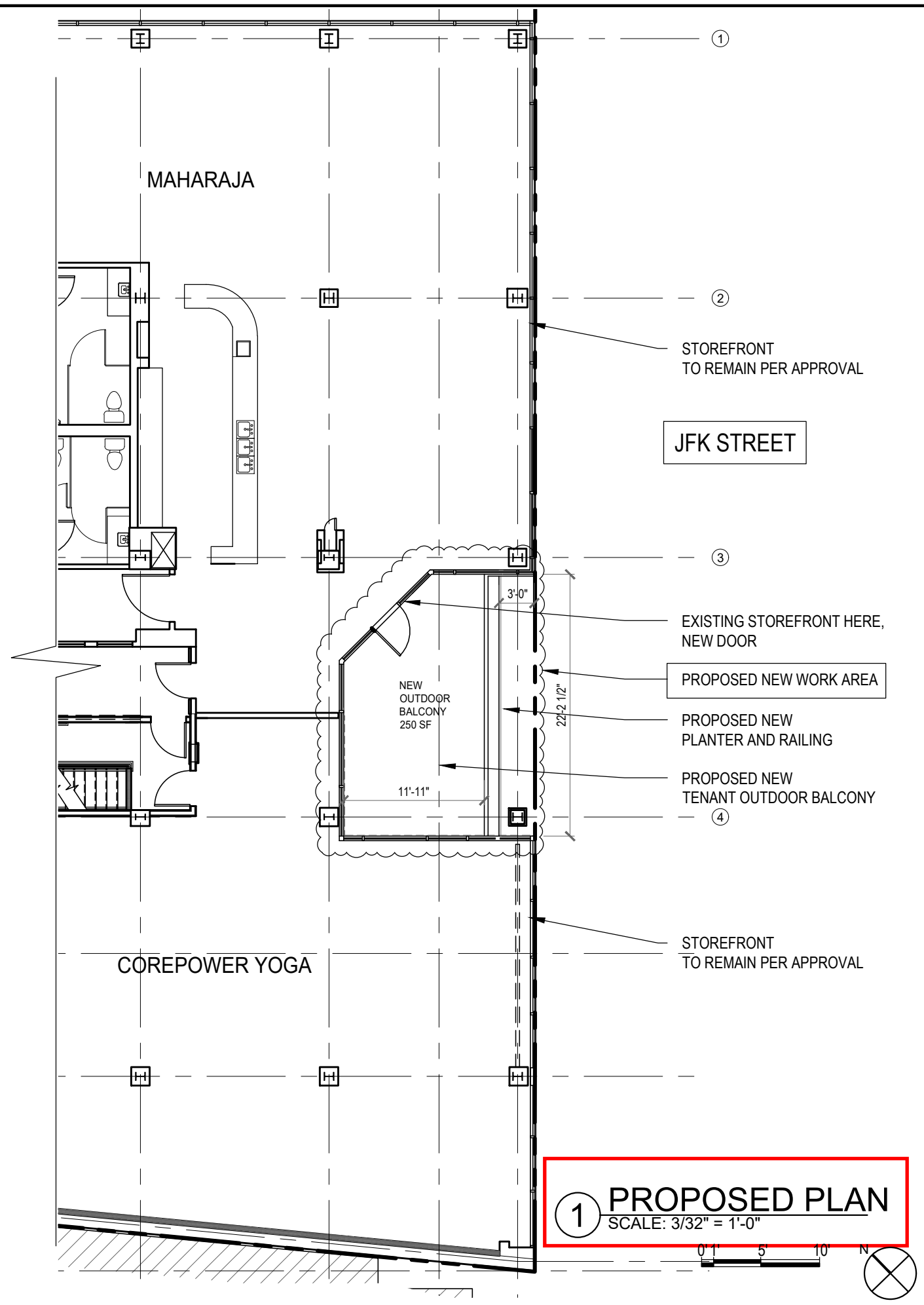
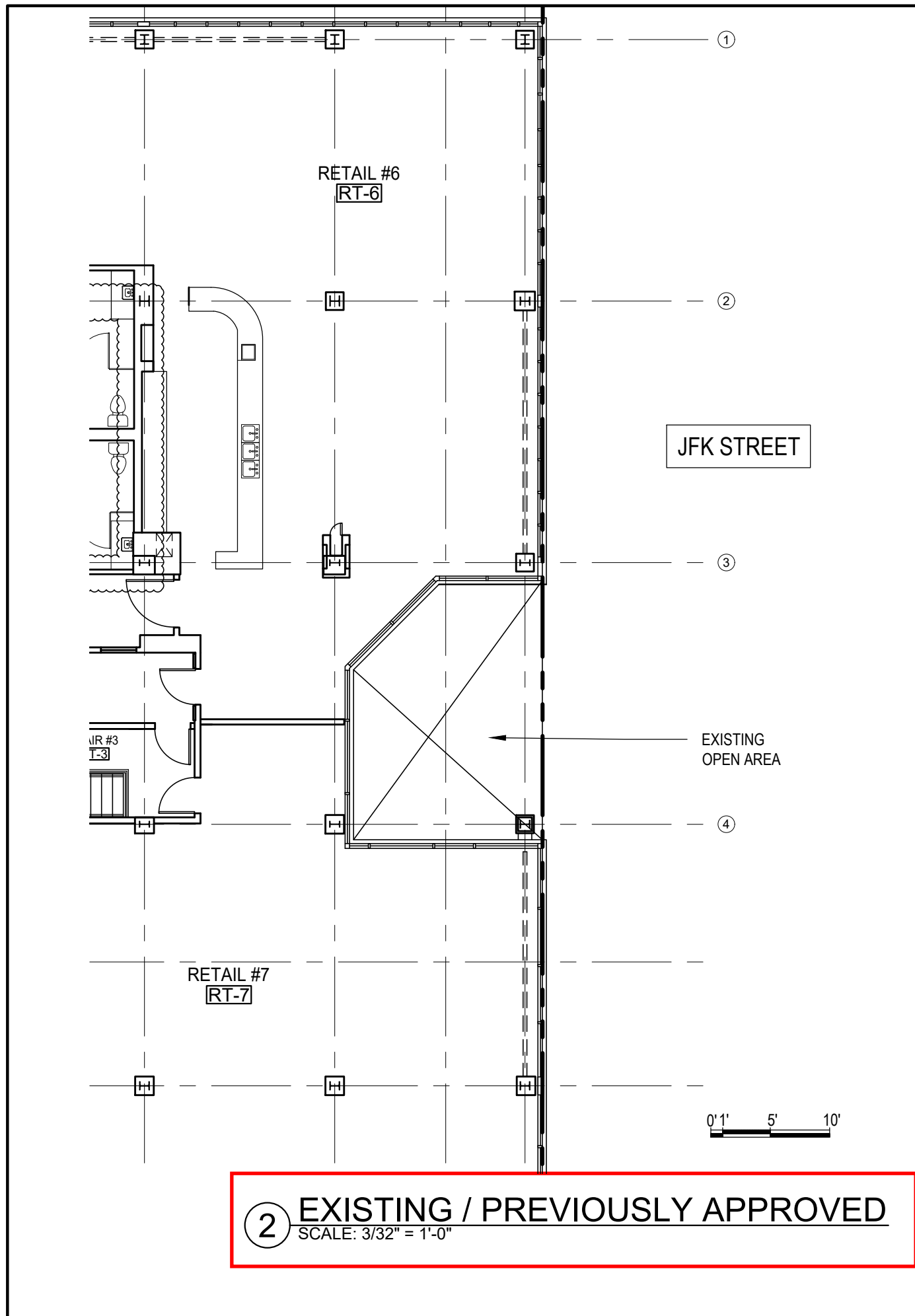
PB APPROVED PLAN



BASEMENT PLAN



8/29/23



2 EXISTING / PREVIOUSLY APPROVED
 SCALE: 3/32" = 1'-0"

1 PROPOSED PLAN
 SCALE: 3/32" = 1'-0"

SEAL

CONSULTANT

PROJECT
PROPOSED NEW
TENANT ENTRY &
2ND FLOOR
BALCONY

57 JFK STREET
CAMBRIDGE, MA

PREPARED FOR
CRIMSON GALERIA, LP

166 BEACON ST
BROOKLINE, MA 02446

DRAWING TITLE

ENLARGED
PROPOSED
PLANS

SCALE AS NOTED

REVISION DATE

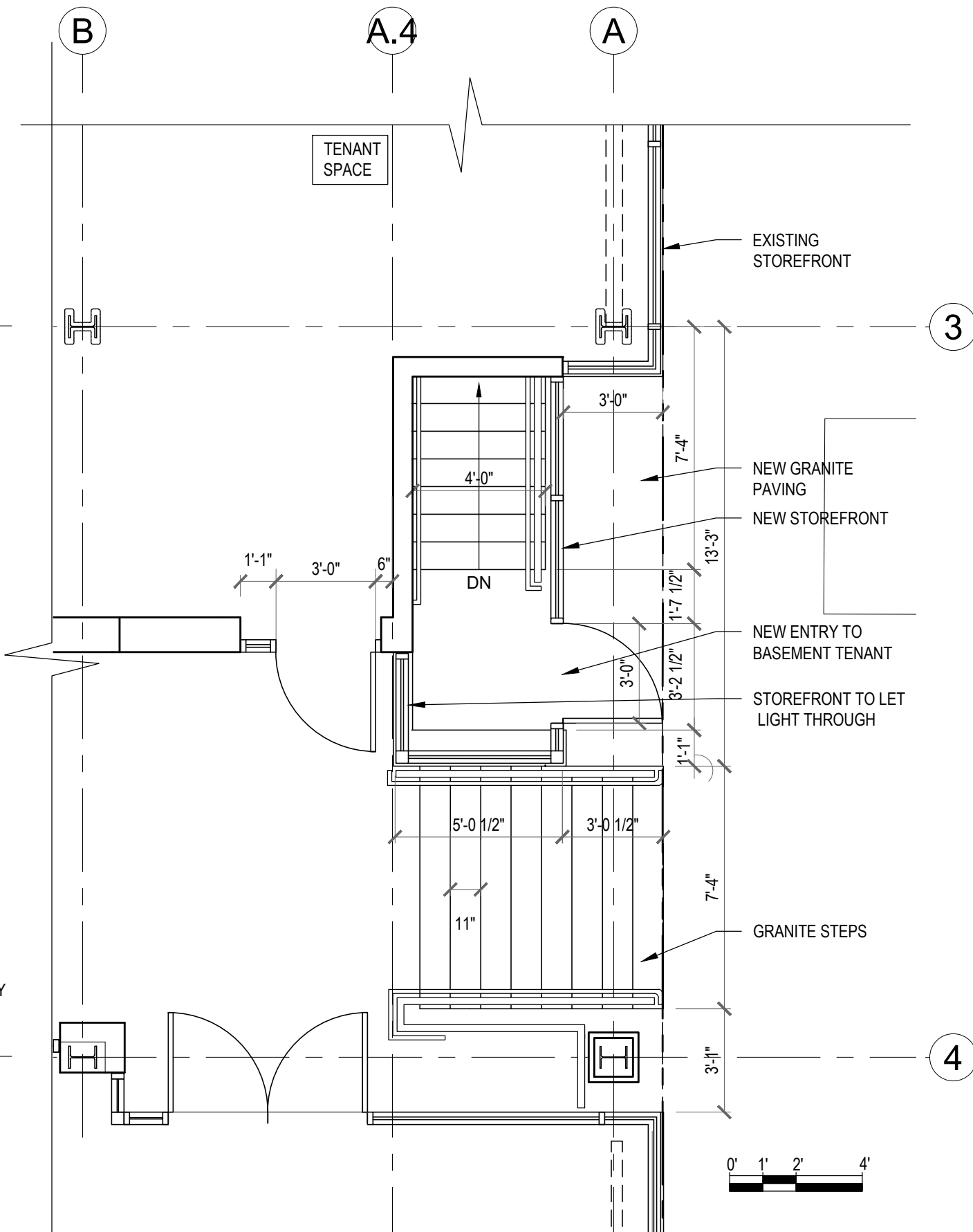
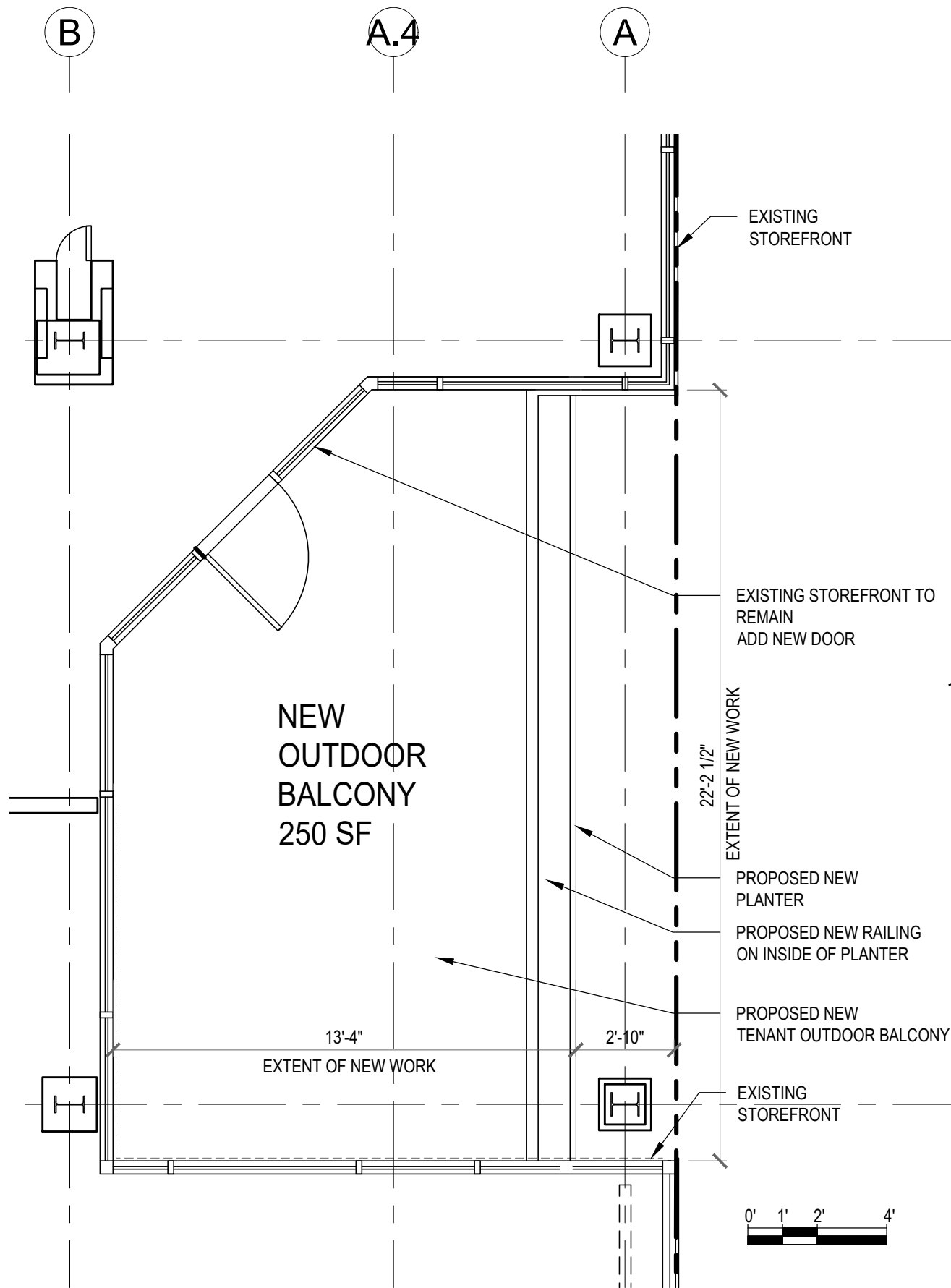
PB APPLIC REV 9/26/23

PB APPLIC REV 8/29/23

DRAWN BY LD REVIEWED BY PQ

SHEET

A2.1



2 SECOND FLOOR ENLARGED PLAN
SCALE: 1/4" = 1'-0"

1 FIRST FLOOR ENLARGED PLAN
SCALE: 1/4" = 1'-0"

SEAL

CONSULTANT

PROJECT

PROPOSED NEW
TENANT ENTRY &
2ND FLOOR
BALCONY

57 JFK STREET
CAMBRIDGE, MA

PREPARED FOR

CRIMSON GALERIA, LP

166 BEACON ST
BROOKLINE, MA 02446

DRAWING TITLE

PROPOSED
SECTION

SCALE AS NOTED

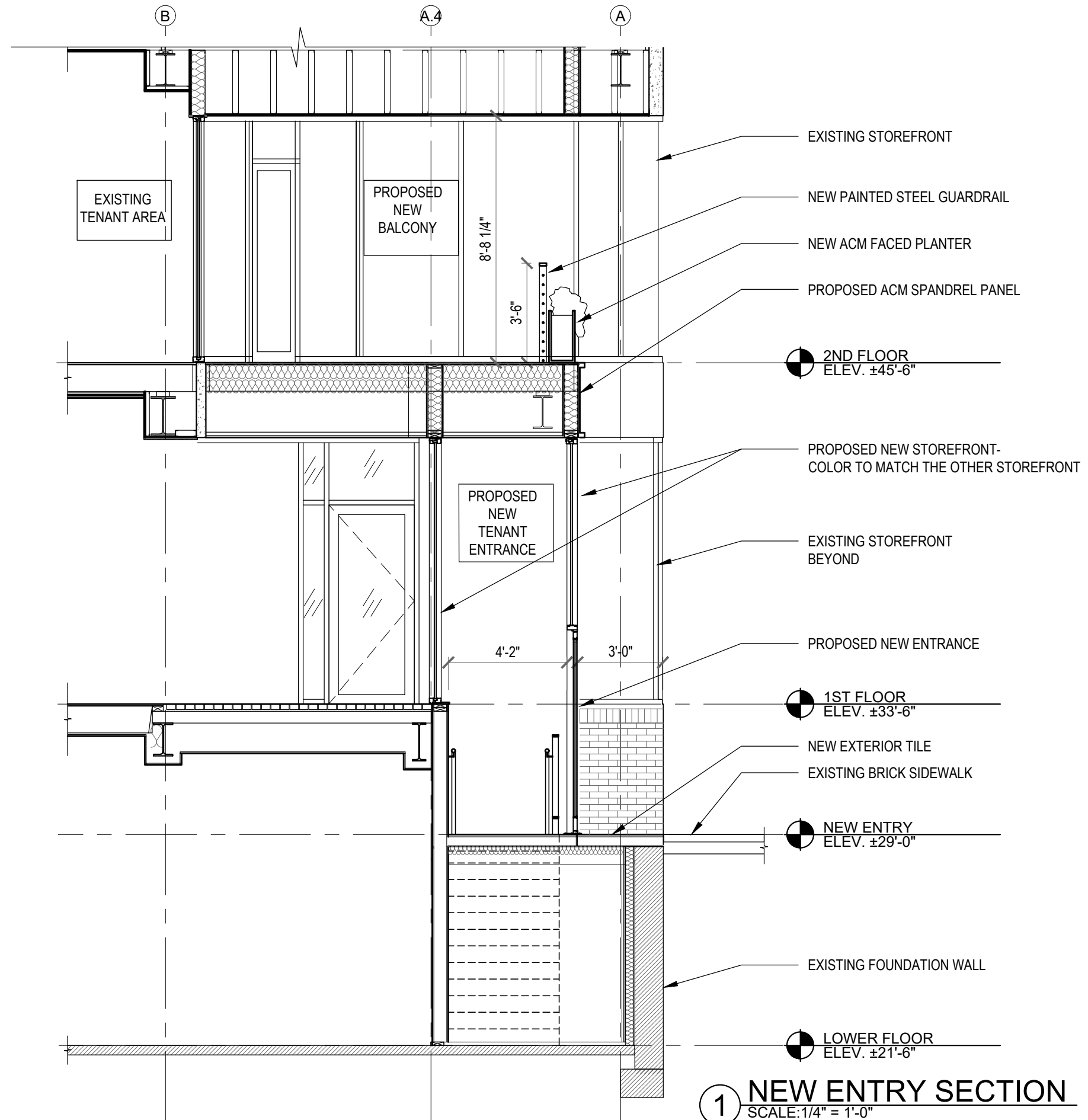
REVISION	DATE

PB APPLIC	REV 9/26/23
PB APPLIC	REV 8/29/23

DRAWN BY LD	REVIEWED BY PQ
----------------	-------------------

SHEET	
-------	--

A6





EXTERIOR BALCONY AT SECOND FLOOR
DARK BRONZE COLORED ACM SPANDRELS AND COLUMN ENCLOSURE
MOSAIC PANEL ON REAR WALL OF NEW ENTRY TO BASEMENT TENANT



PROJECTING SIGN ON DARK BRONZE CLAD COLUMN
LED LIT LETTERS AT NIGHT

WHITE ROOF

HIGH ALBEDO ROOFING MEMBRANE



AS APPROVED



BIRDSEYE VIEW FROM JFK STREET

FACADE DETAIL

AS APPROVED



WINTHROP ST ENTRANCE



ALUMINUM PROFILE

PANEL JOINTS

WOOD SOFFIT & MULLION DETAIL

AS APPROVED

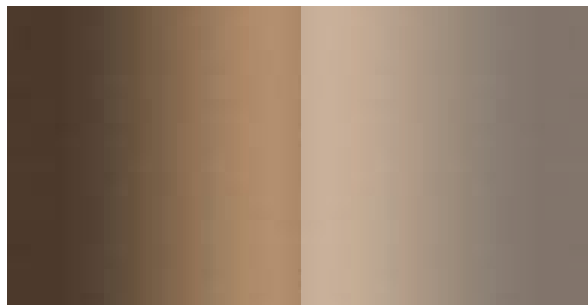
“STURDISTRICT”
ROOFTOP SCREEN FRAMING
& HORIZONTAL “SITE PROOF”
ALUMINUM, LOUVER HORIZONTAL.
BY ARCHITECTURAL
LOUVERS INC.
COLOR “A”



ALUMINUM FACED BALCONY
PLANTER BOX, COLOR “B”



ALUCOBOND - ALUMINUM
COMPOSITE PANEL
1/8” RAINSCREEN SYSTEM
COLOR “A” TYPICAL
COLOR “B” AT ENTRY PORTAL



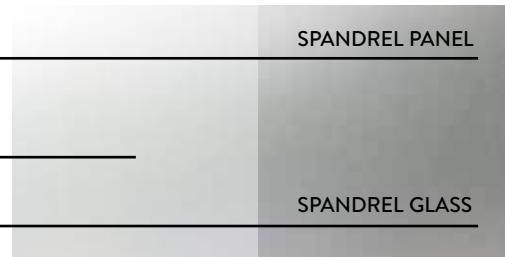
JET MIST GRANITE BASE “A”



MFR: KNOTWOOD WOOD TONE
ALUMINUM SOFFIT PANEL
SYSTEM

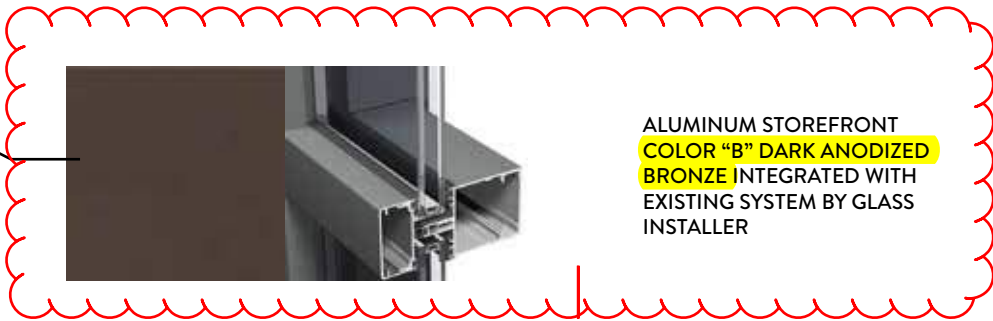


ALUMINUM WINDOW SYSTEM
COLOR “C” LIGHT ANODIZED
BRONZE



EXTERIOR LITE: 6MM HS CLEAR
SOLARBAN 70 (2) VISION GLASS
W/ LOW-E COATING SURFACE #2

6MM FT CLEAR VISION GLASS
W/ OPACIFIER ON SURFACE #3



ALUMINUM STOREFRONT
COLOR “B” DARK ANODIZED
BRONZE INTEGRATED WITH
EXISTING SYSTEM BY GLASS
INSTALLER

COLOR OF NEW STOREFRONT AND PANELS AT
NEW RECESSED ENTRY



BUILDING SIGNAGE - PIN
ALUMINUM FACE MOUNT OVER
ARCYLIC LED BACKING