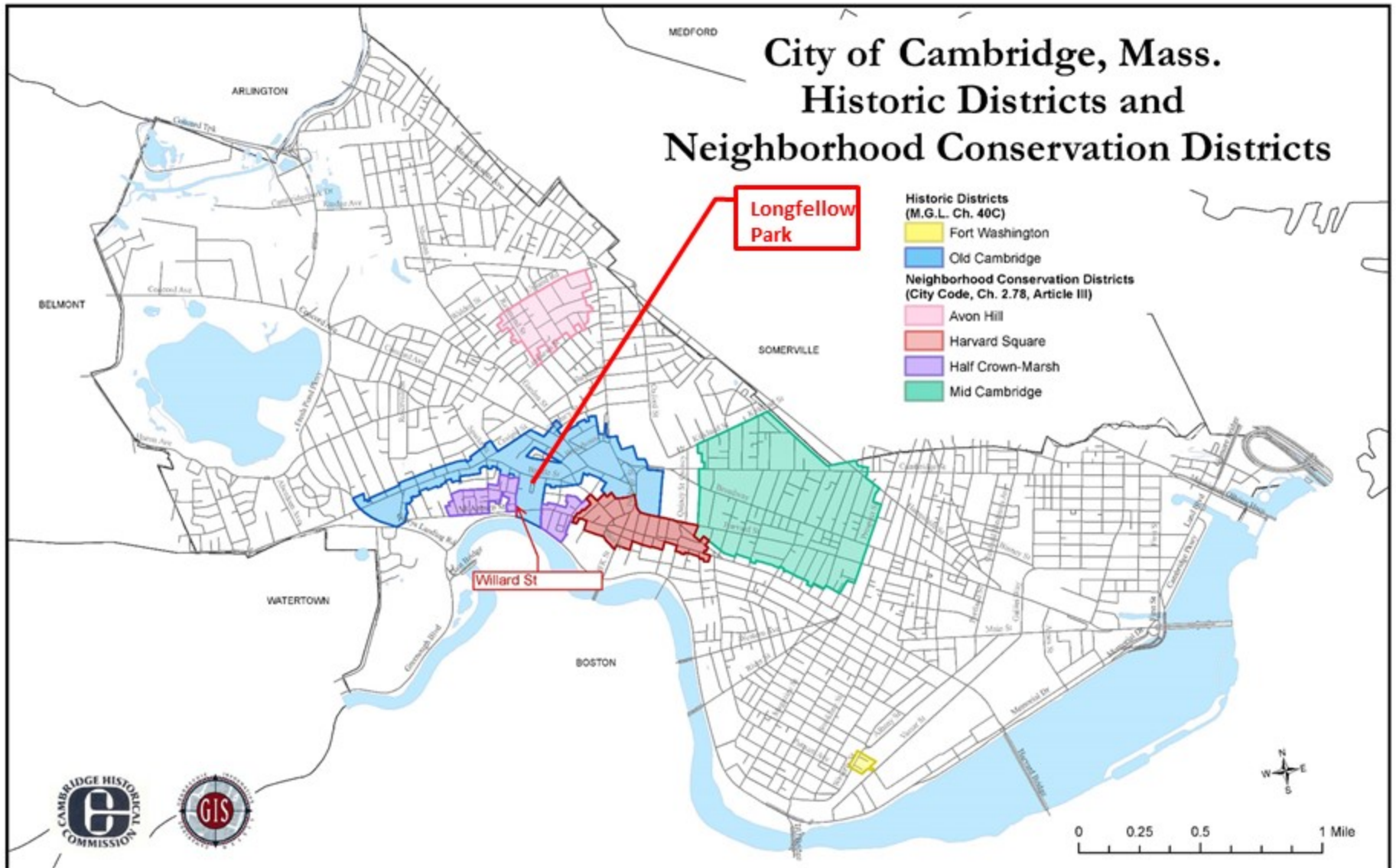


Longfellow Park Improvements

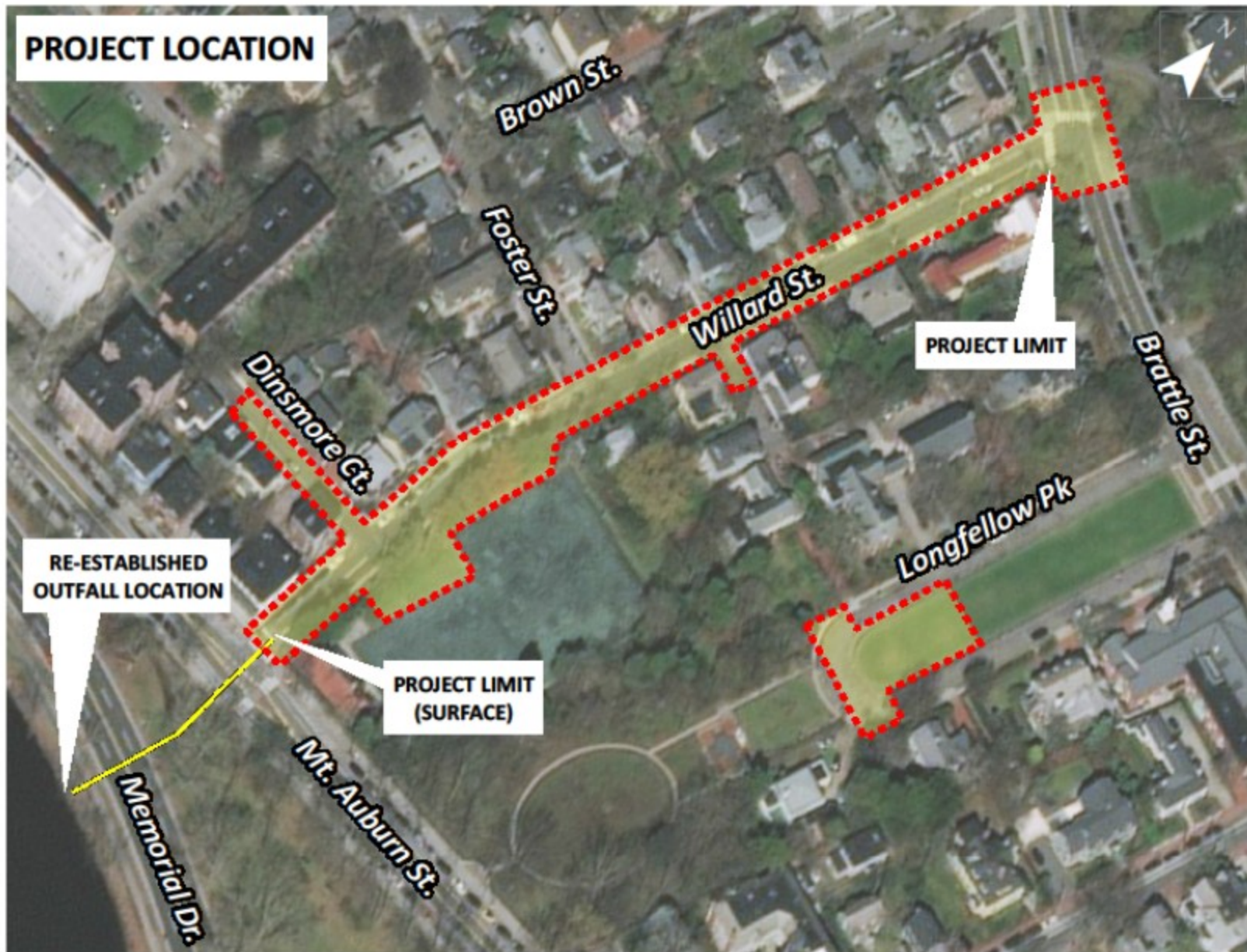
Cambridge Historic Commission Hearing

July 12, 2018

CAMBRIDGE HISTORIC COMMISSION BOUNDARY MAP



Project Location



Reasons for Project

1. Stormwater Deficiencies

Reduce periodic flooding in Willard Street neighborhood

- Large “off-site” drainage area tributary to Willard Street combined sewer system
- Contributes to overloading of system and occasional overflows to Charles River



Reasons for Project

2. Surface Deficiencies

Improve Streetscape Conditions

- Roadway surface is deteriorated
- Granite pavers at Brattle Street sidewalk do not meet accessibility requirements



Proposed Improvements



See detail sheet for Infiltration System

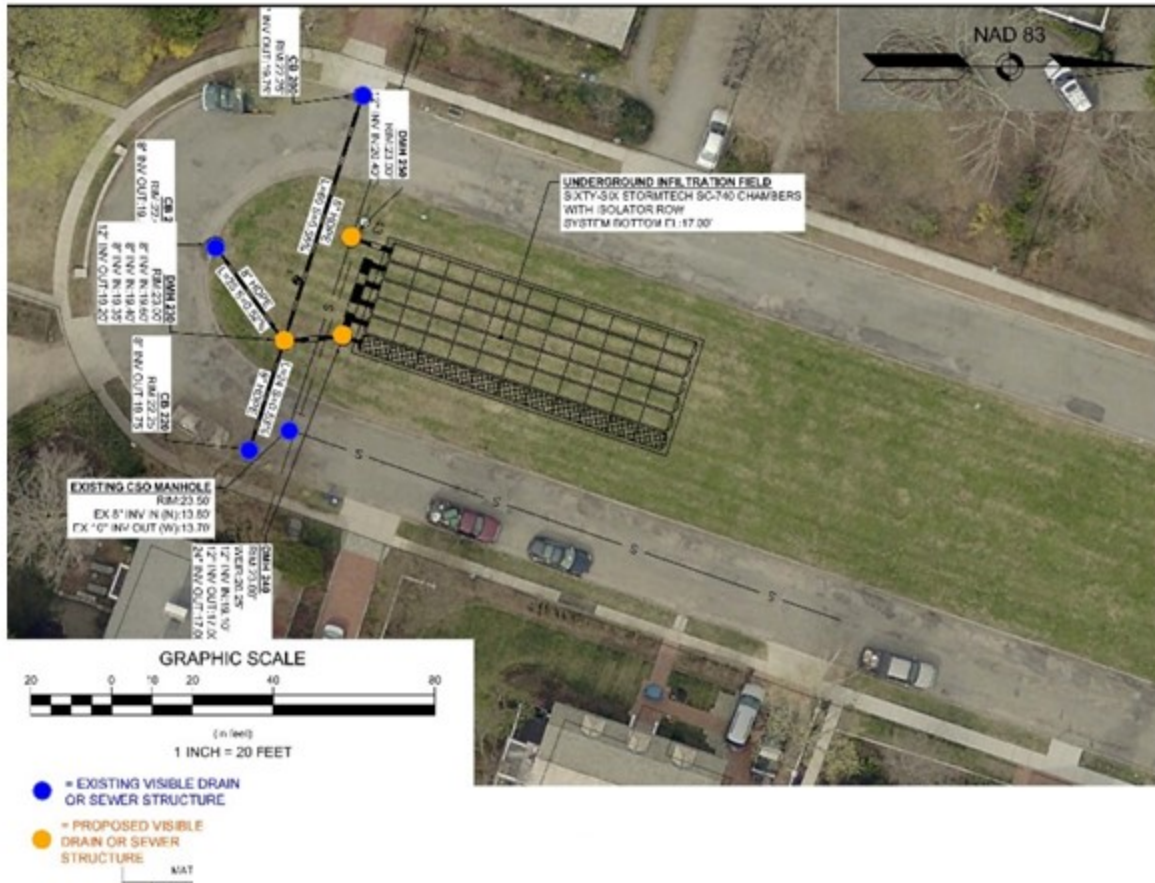
Existing example of accessible granite pavers (See photos)

Replace existing sidewalk/roadway crossings (non-accessible granite pavers) with new accessible granite pavers (See photos)

Cambridge DPW - Longfellow Park Infiltration System and Related Sidewalk Improvements

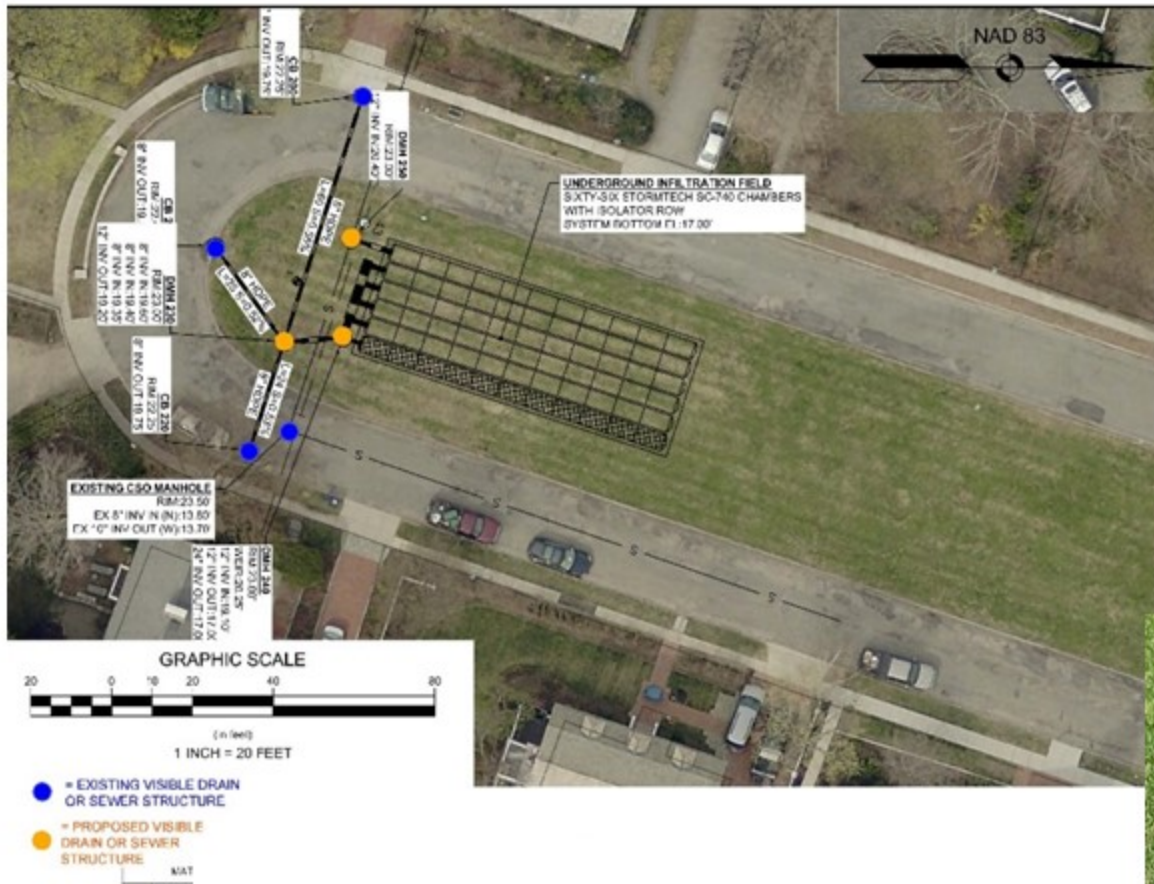
Proposed Improvements

Infiltration System



Proposed Improvements

Infiltration System



Proposed Improvements



Existing example of accessible granite pavers (See photos)

See detail sheet for Infiltration System

Replace existing sidewalk/roadway crossings (non-accessible granite pavers) with new accessible granite pavers (See photos)

Cambridge DPW - Longfellow Park Infiltration System and Related Sidewalk Improvements

Proposed Improvements

Accessible Pavers



Existing Pavers at Longfellow Park



Accessible Pavers at Longfellow House

Proposed Improvements

Accessible Pavers



Existing Pavers at Longfellow Park



Accessible Pavers at Longfellow House

Questions and Discussion