

“Original” Kiosk



Harvard Square Kiosk - estimated 1977



Harvard Square Kiosk - estimated 1960's

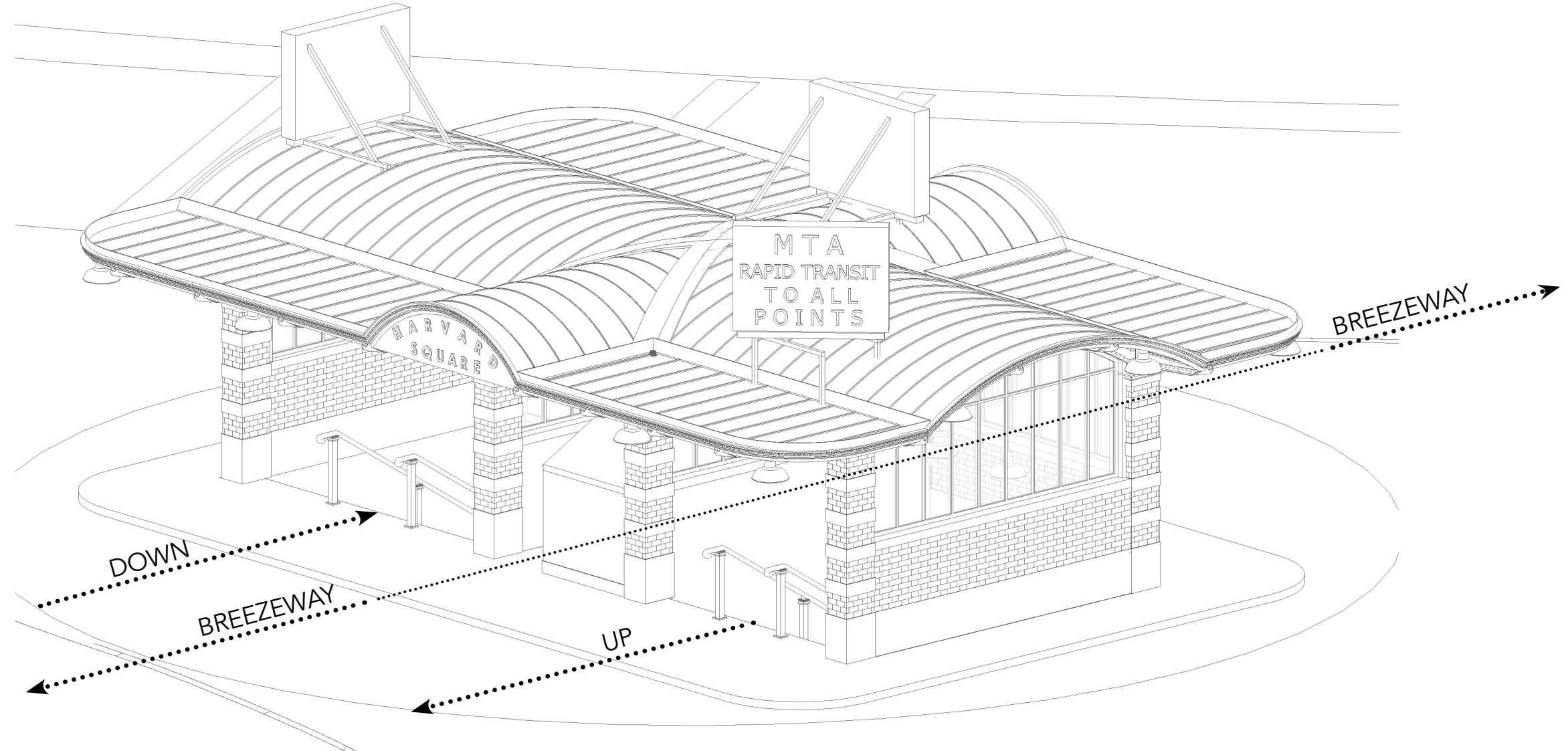


Harvard Square Kiosk - today

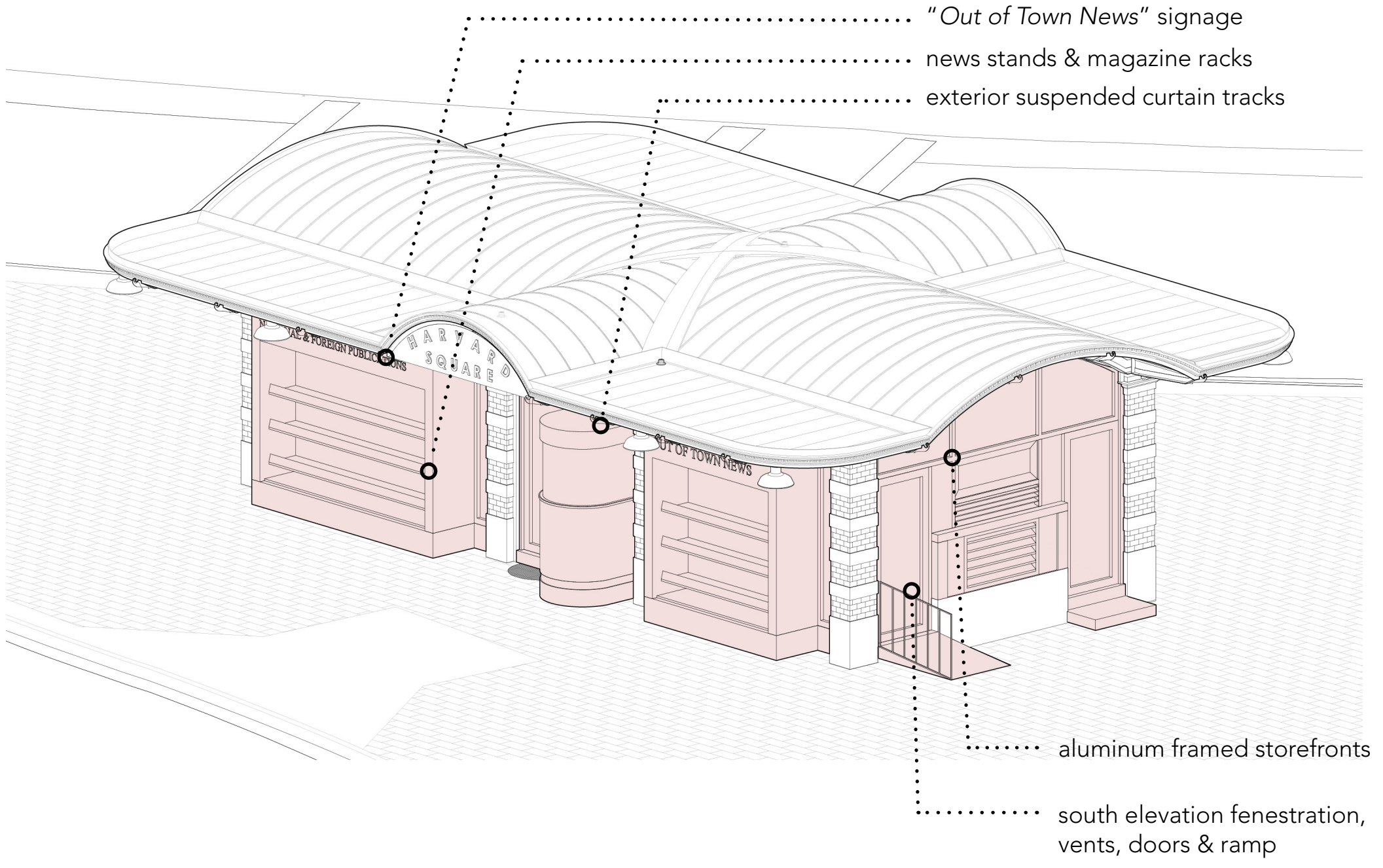


# Kiosk Diagrams

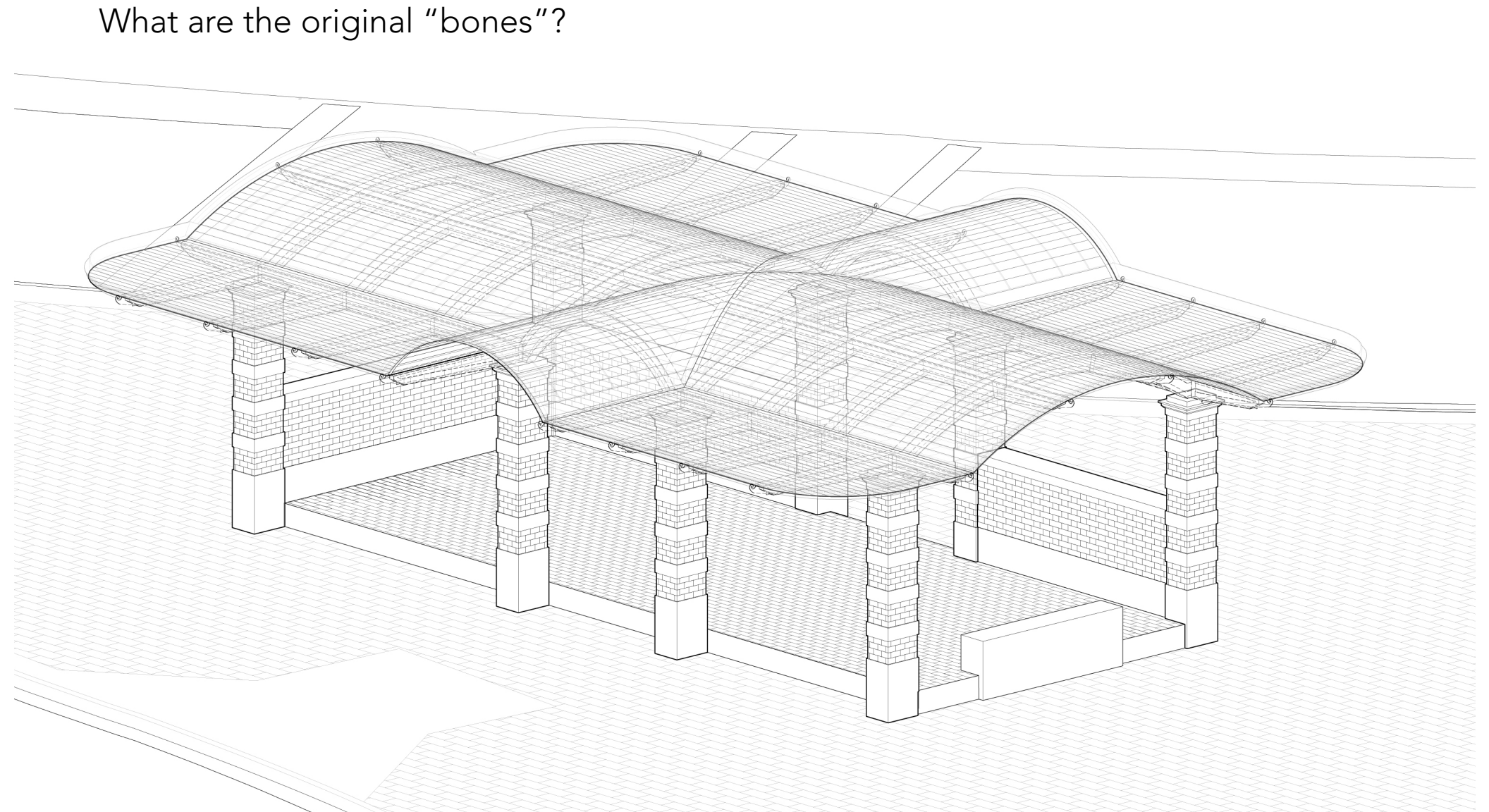
## 1 "Original" Kiosk



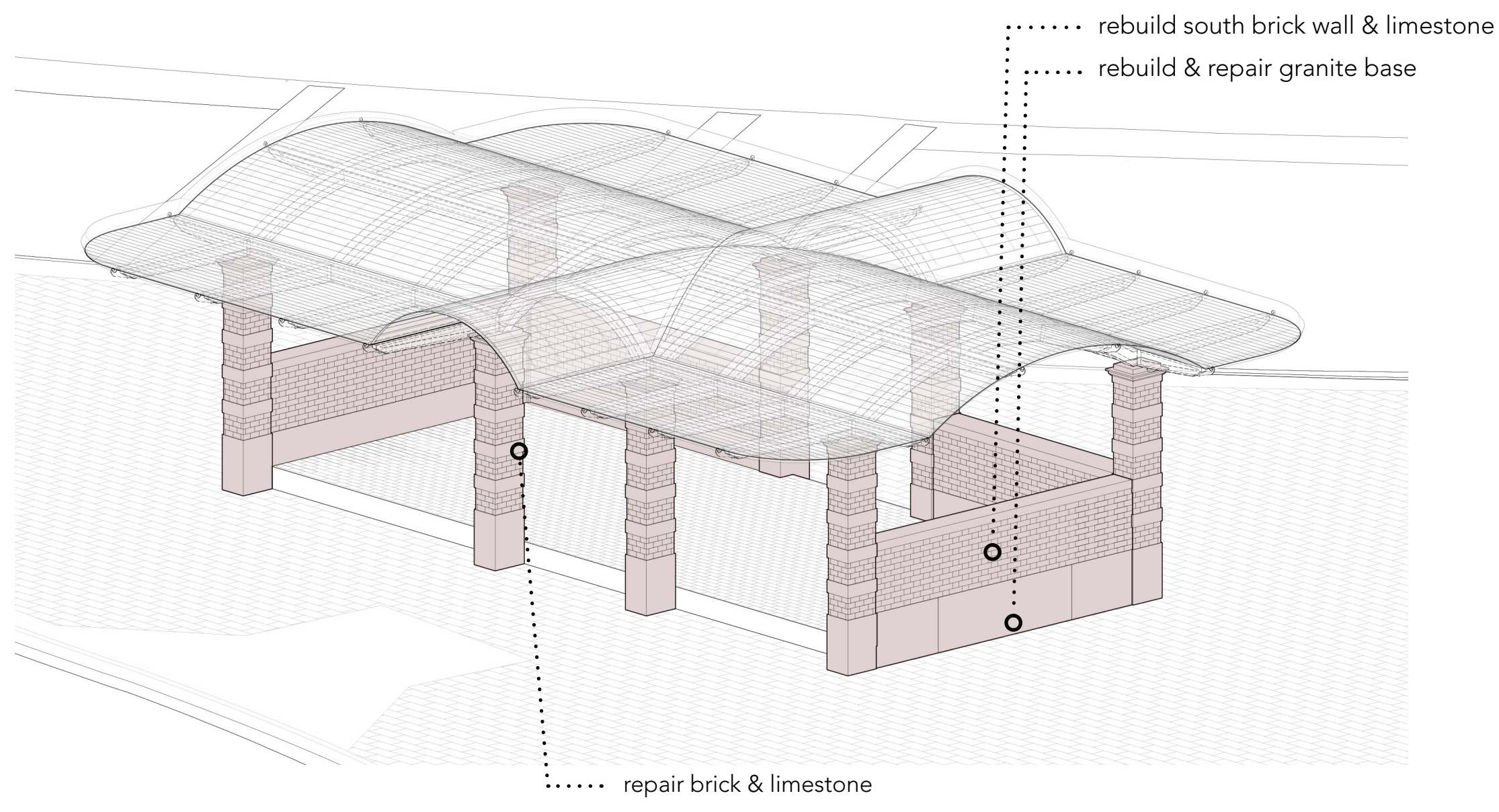
## 2 Existing Kiosk Today



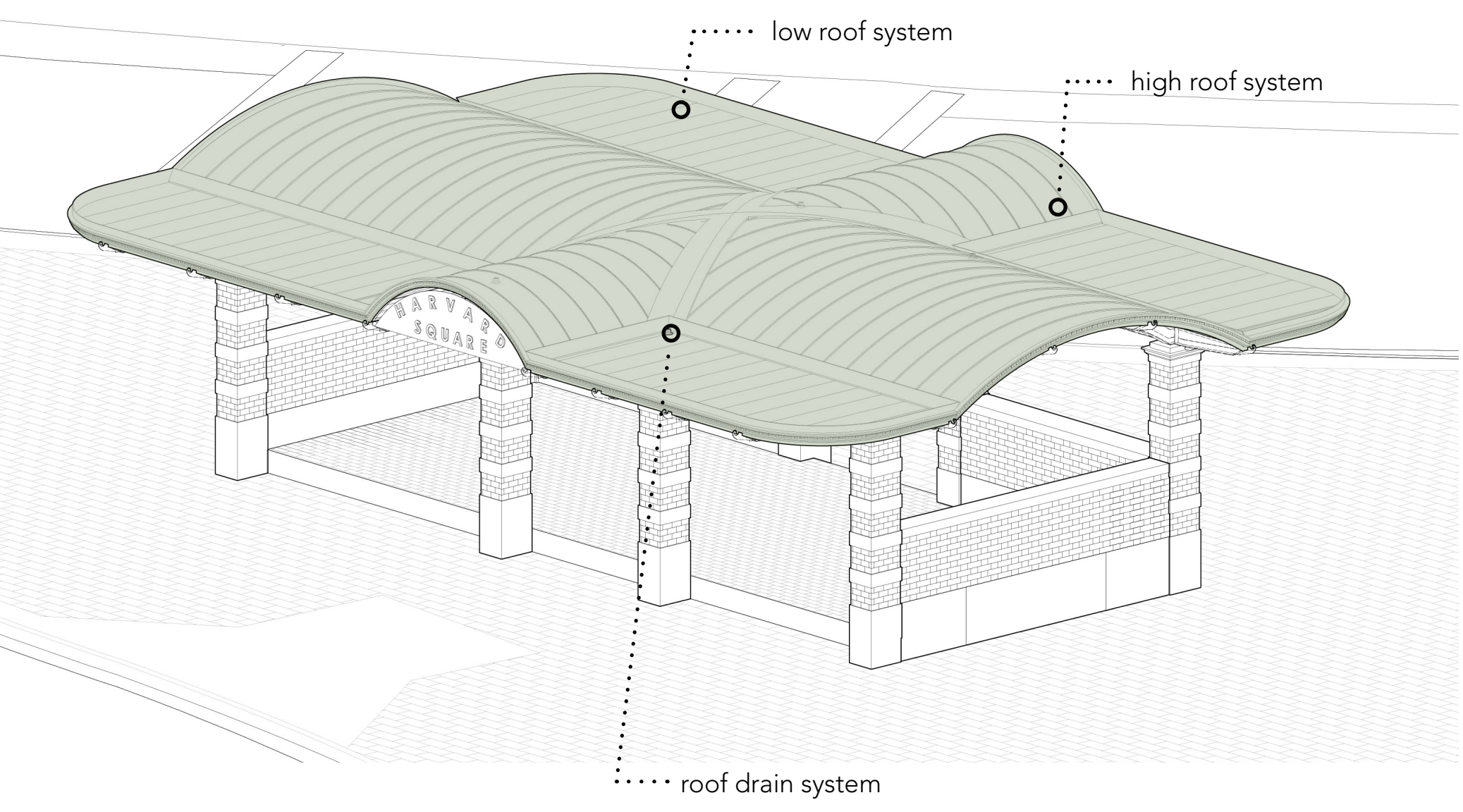
## 3 1983 Relocated Kiosk



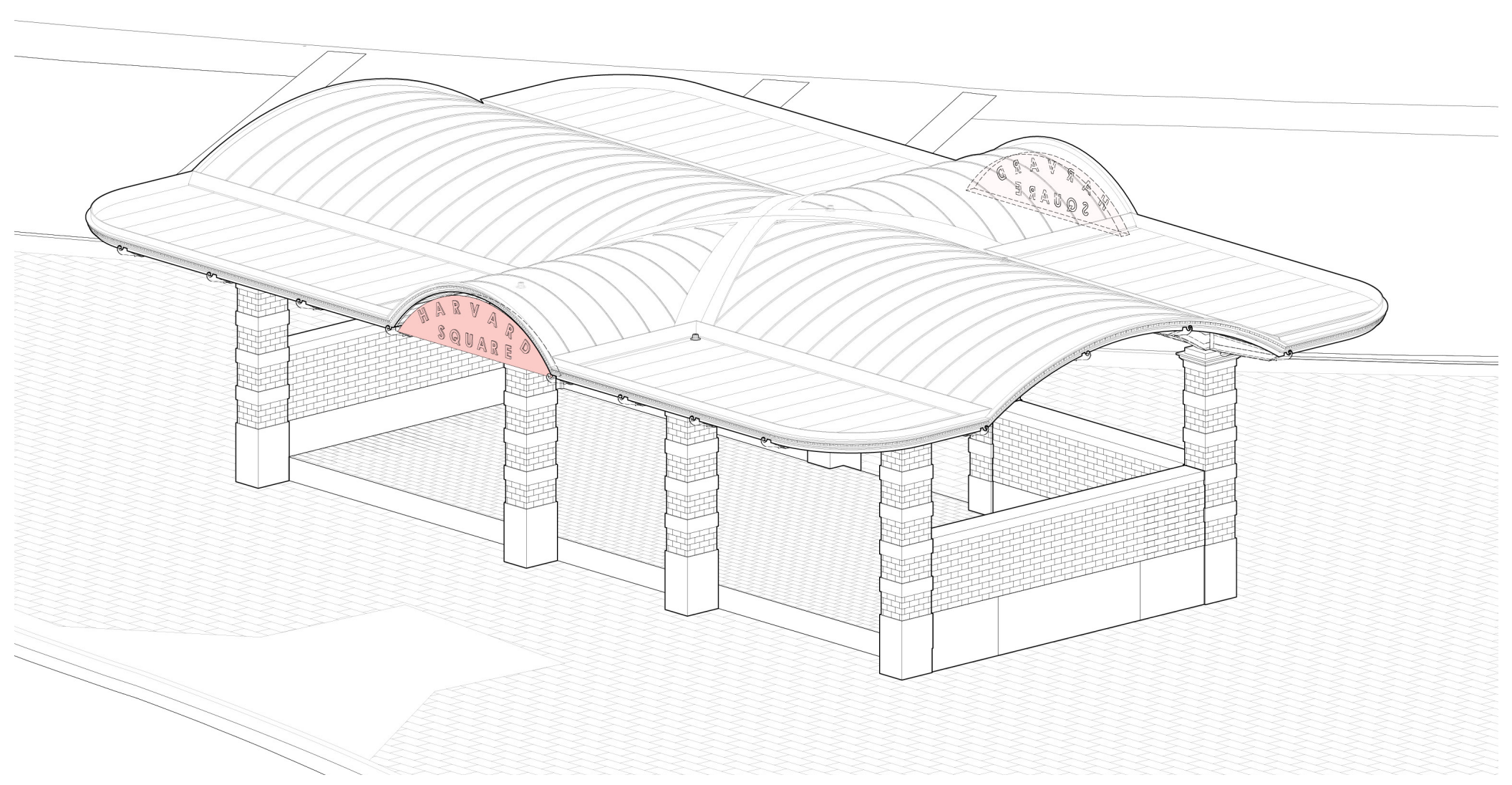
## 4 Masonry - Brick, Limestone & Granite



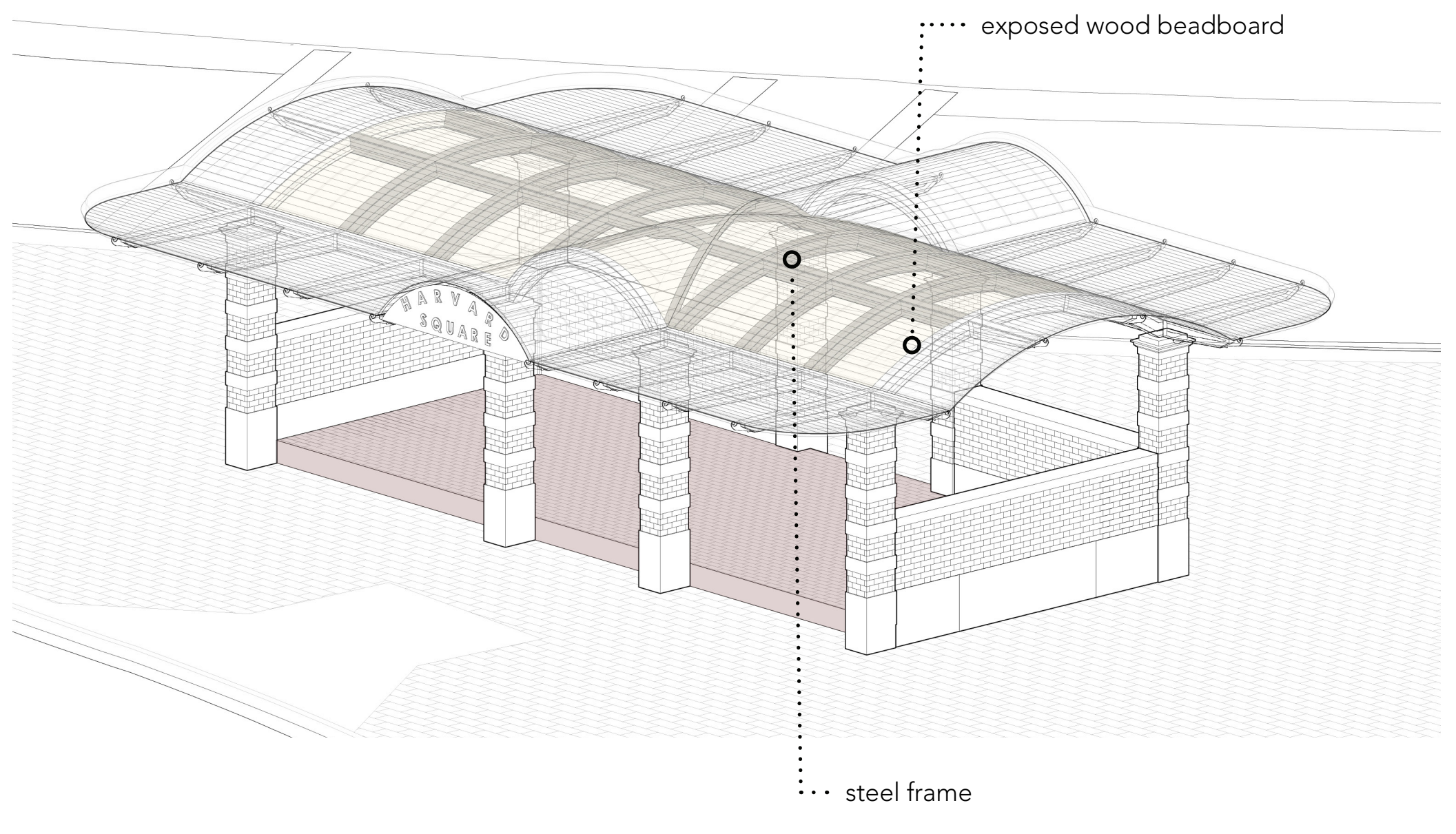
## 5 Roof



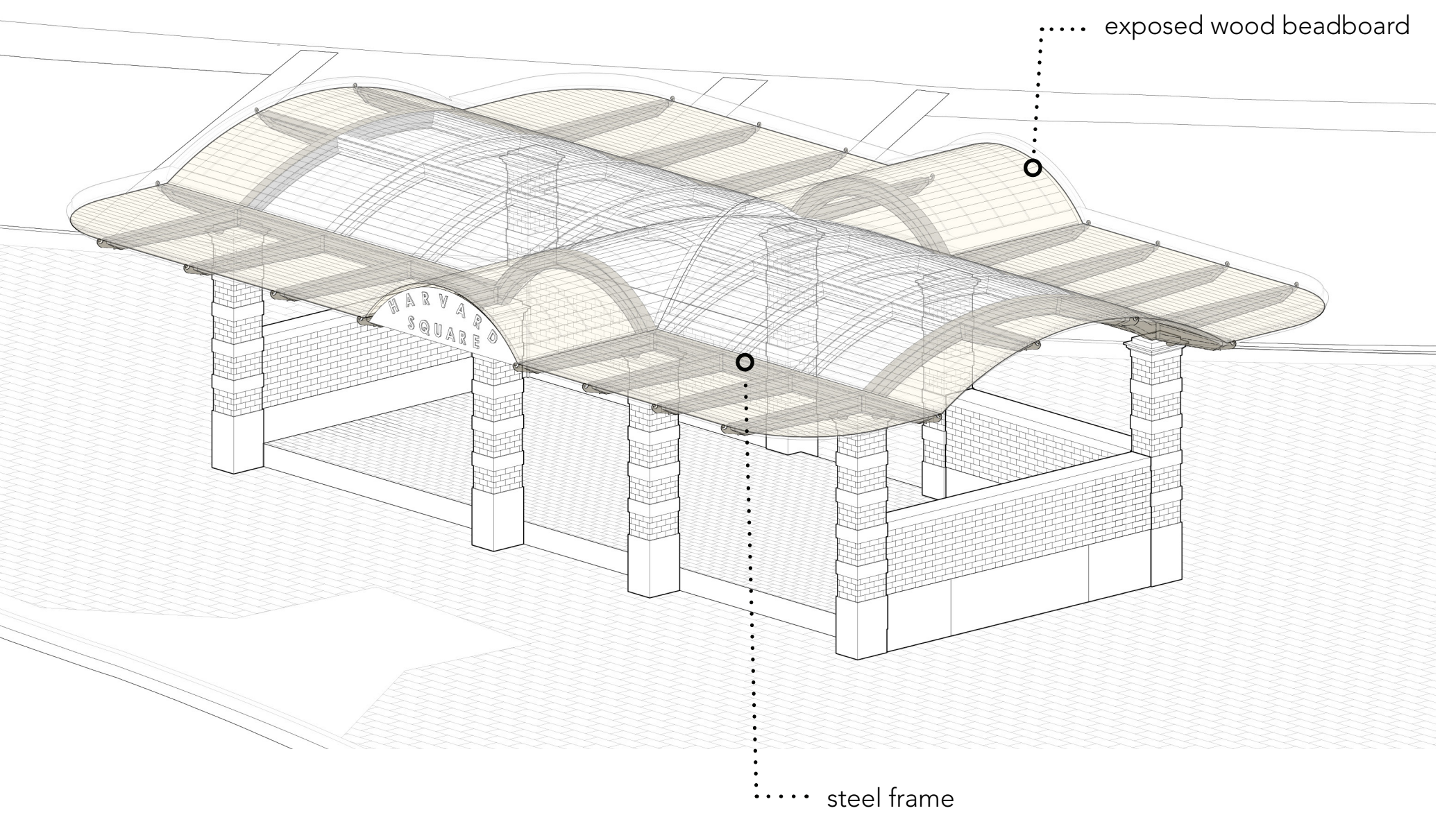
## 6 Signage



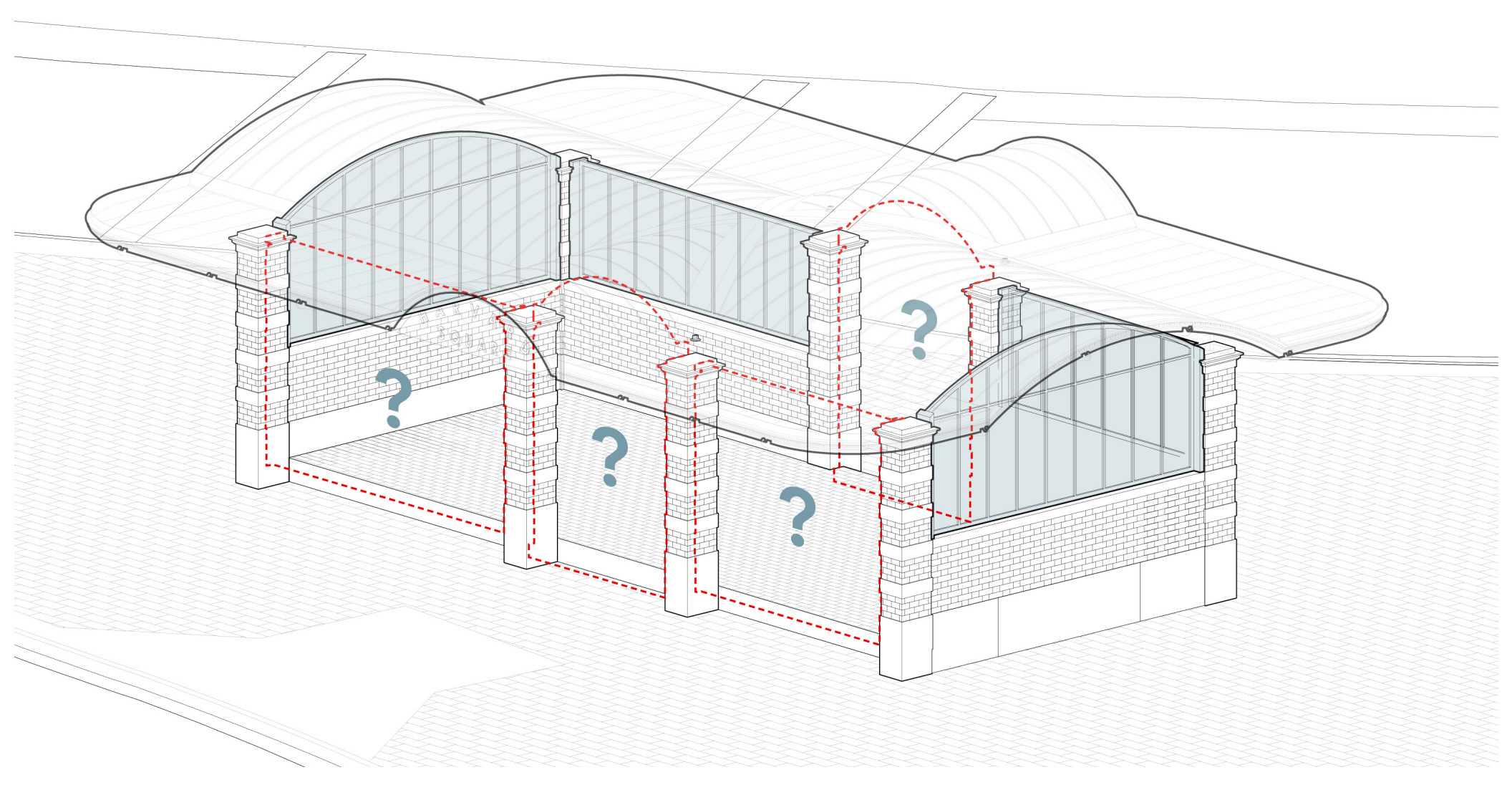
## 7 Interior Features



## 8 Steel Support & Wood Sheathing

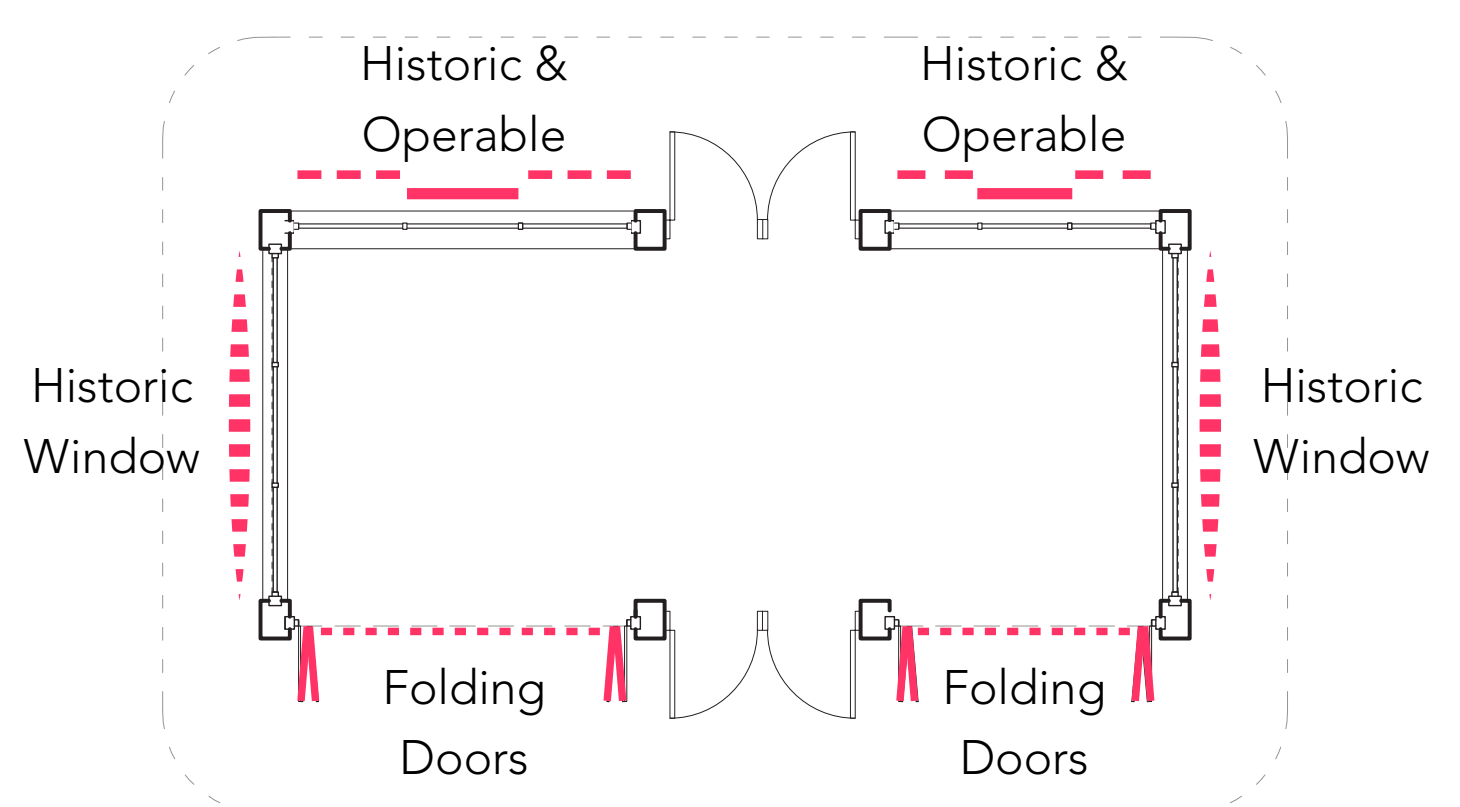


## 9 Fenestrations



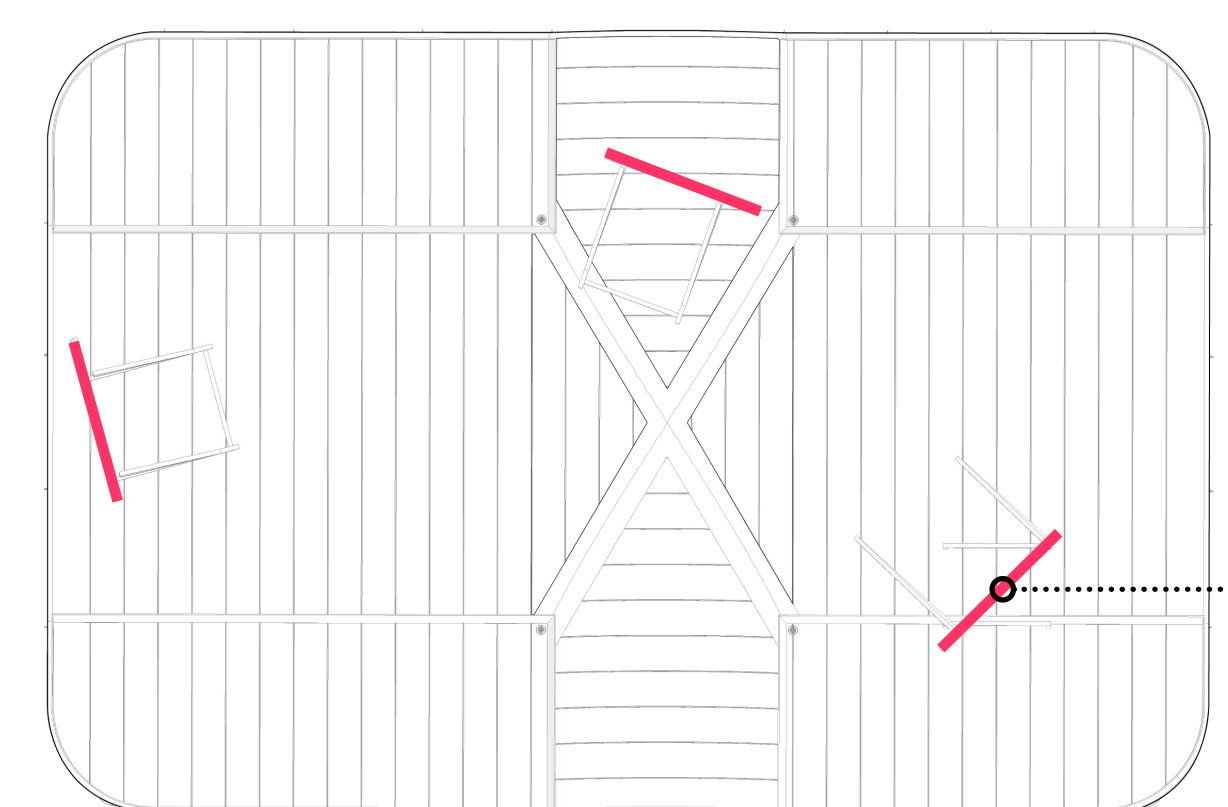


# Proposed Kiosk



Key Floor Plan

Signage Panels: 4'-0" tall x 6'-0" wide (approx.)



Key Roof Plan

8 digital signage



View looking Southwest



View looking Northeast

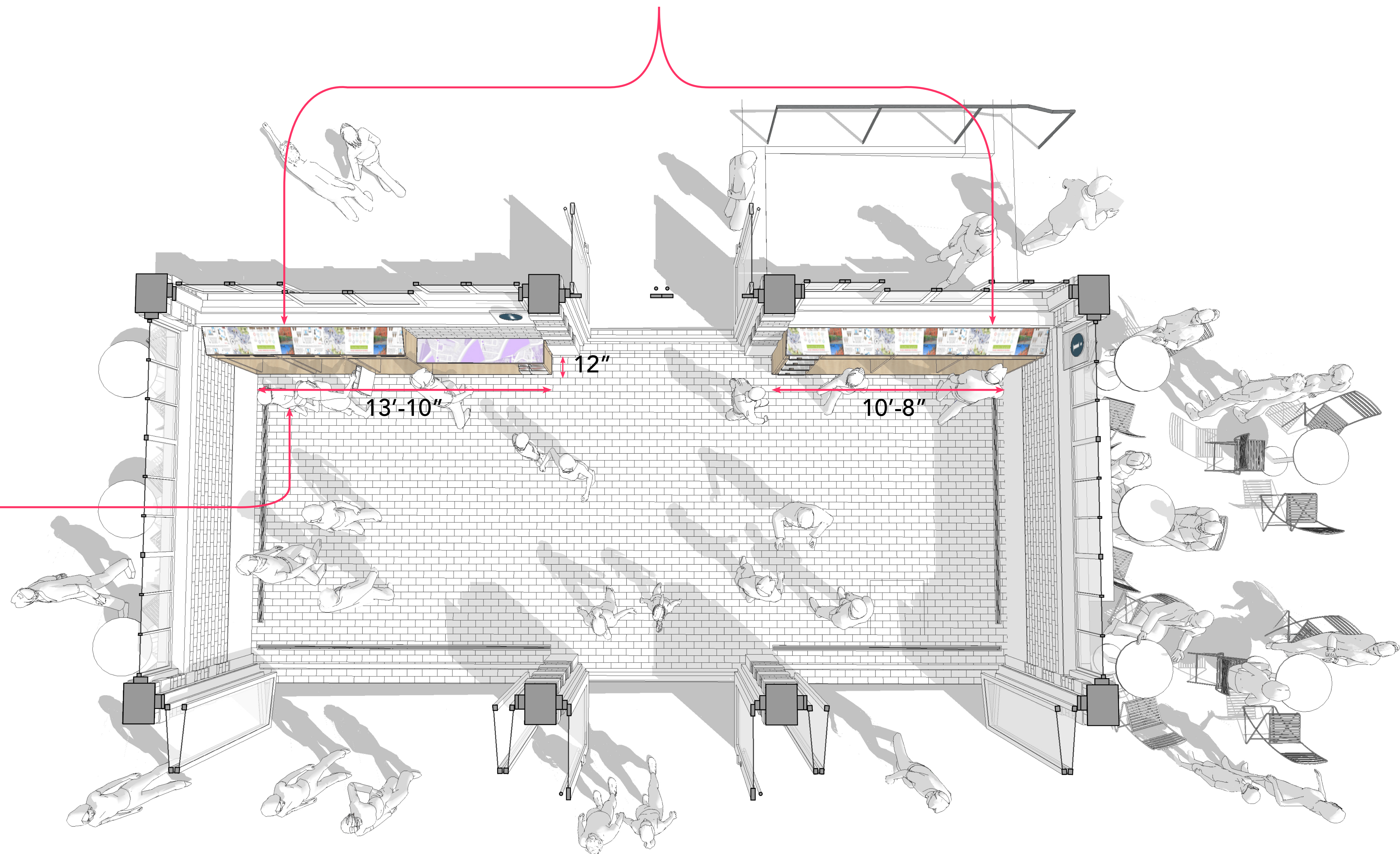
- 1 historic lights
- 2 restored vacuum formed signage
- 3 accessible entry doors
- 4 folding glass doors
- 5 indoor / outdoor brick flooring
- 6 historic windows
- 7 restored south facade with signage



Daily Uses



Visitor Information



Flexible Storage with foldable tables and stackable chairs

← NORTH

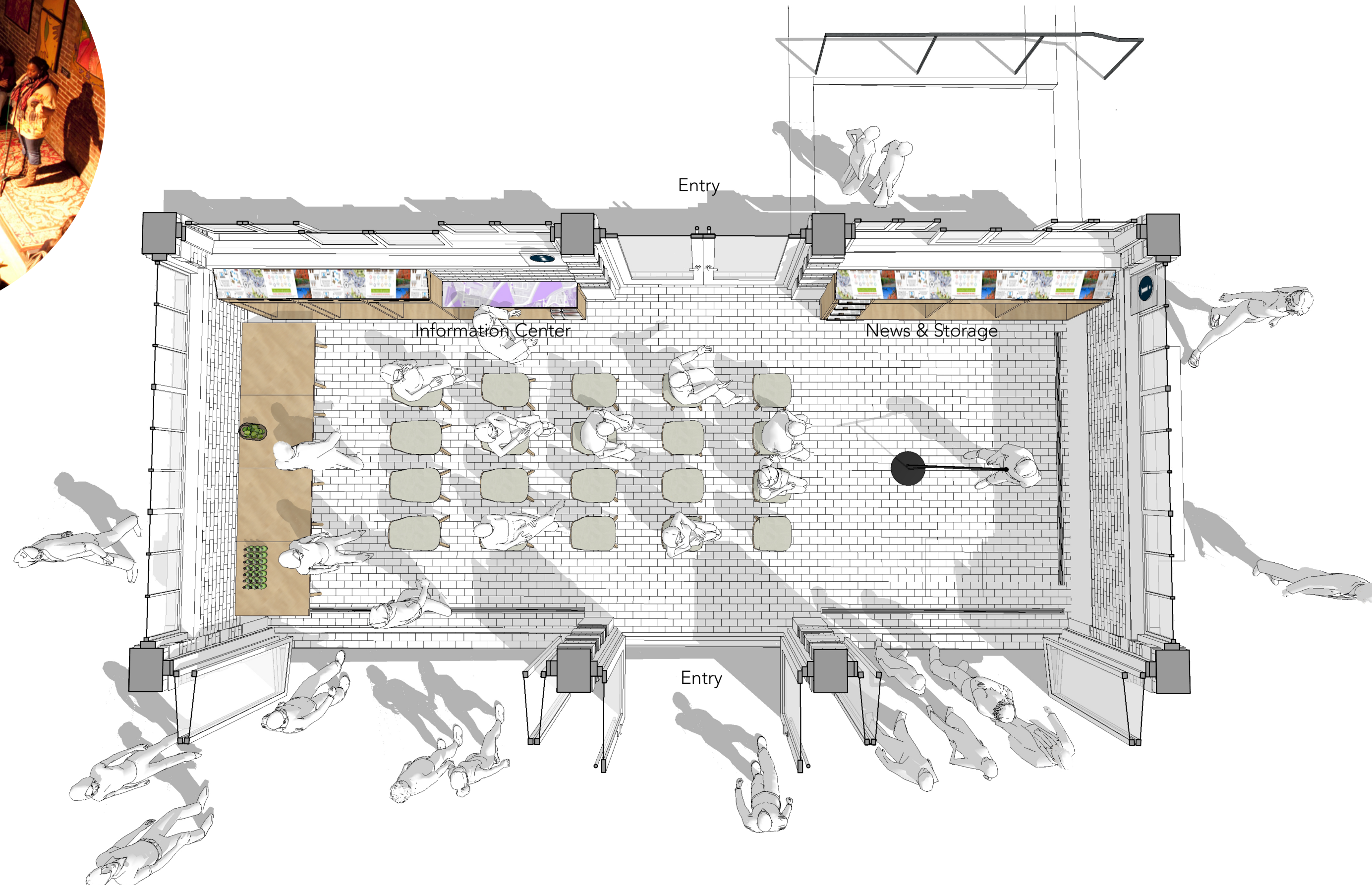




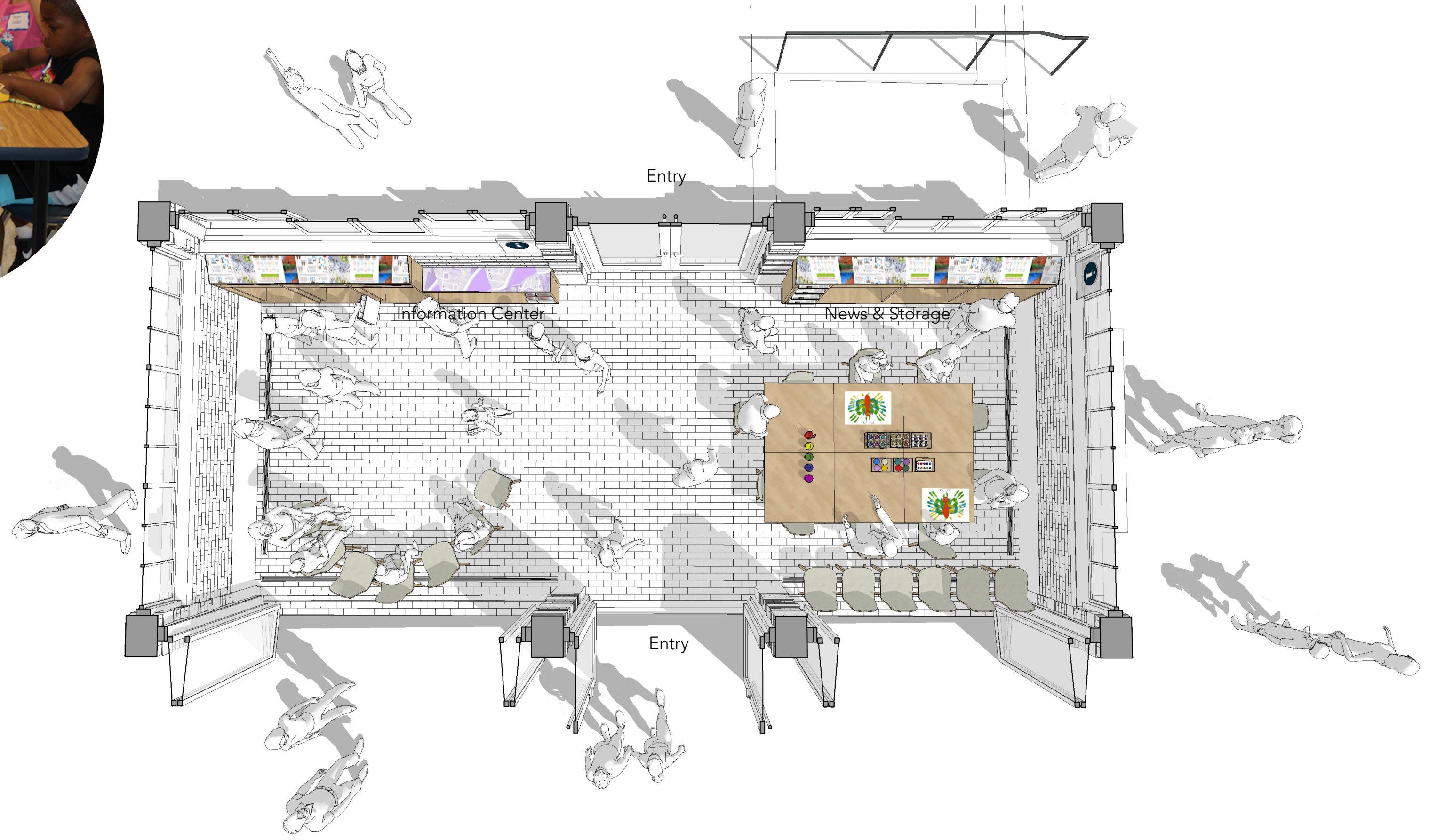
# Kiosk Sample Days



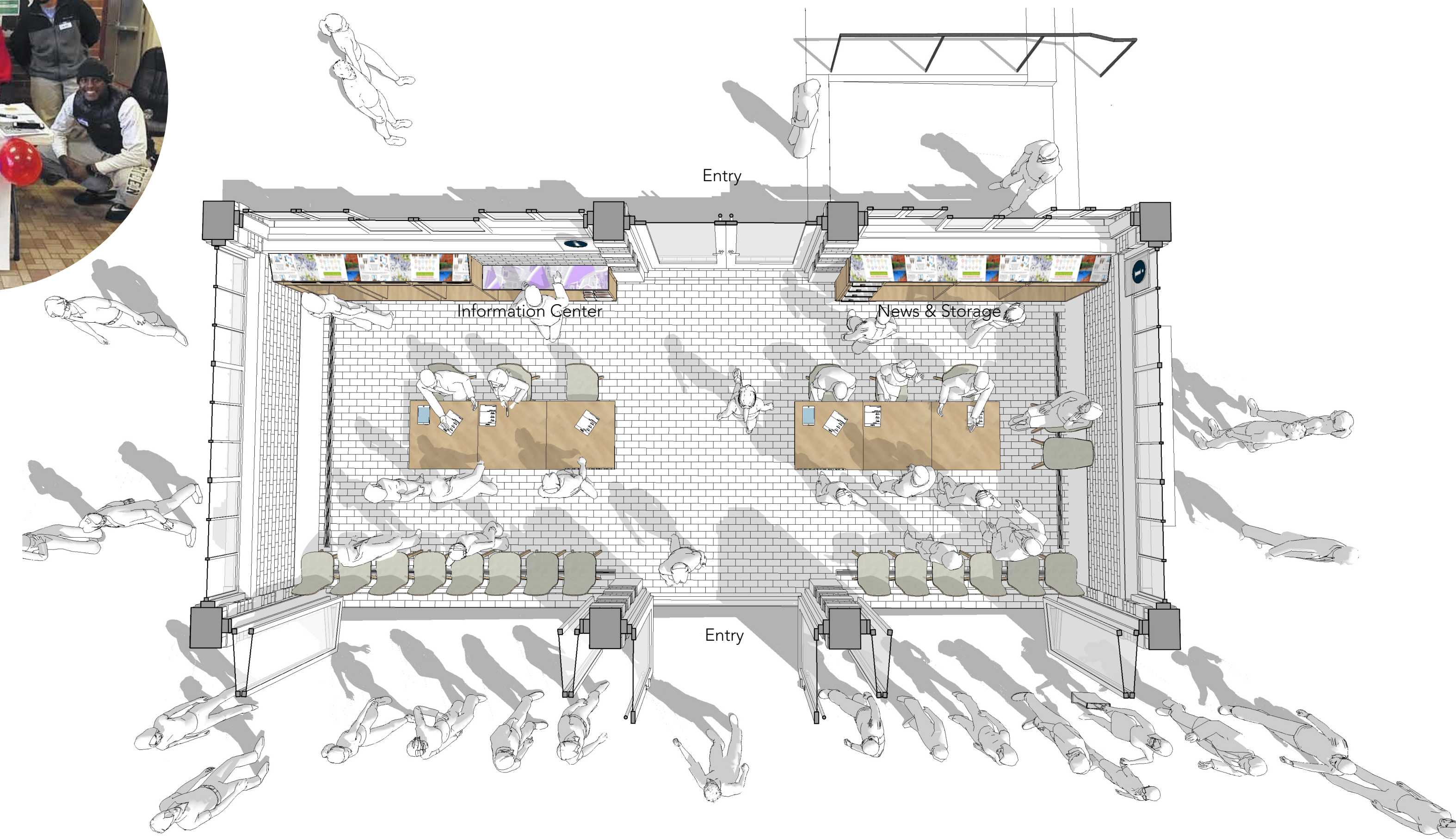
Performance Venue



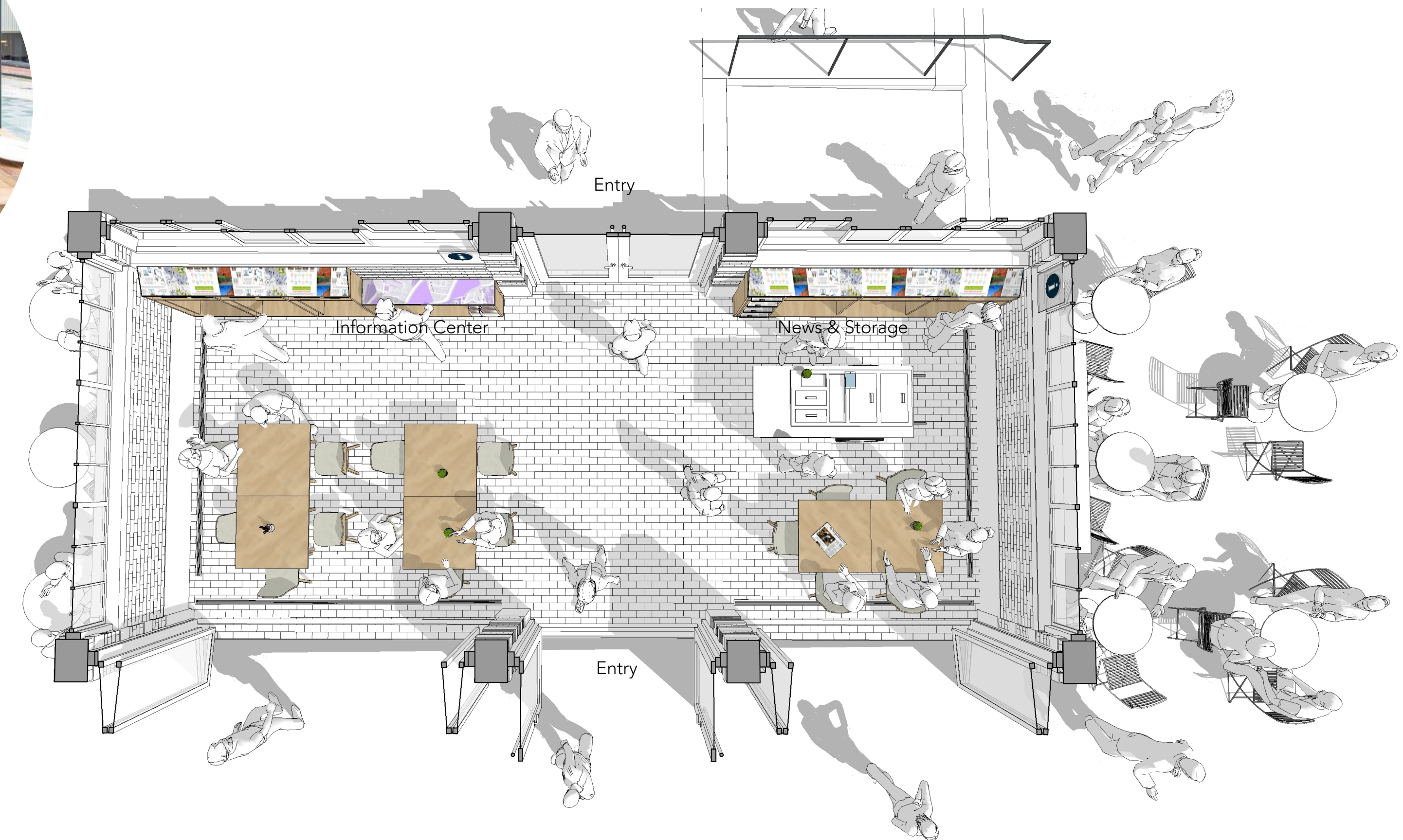
Family Activities



Civic Functions



Social Seating

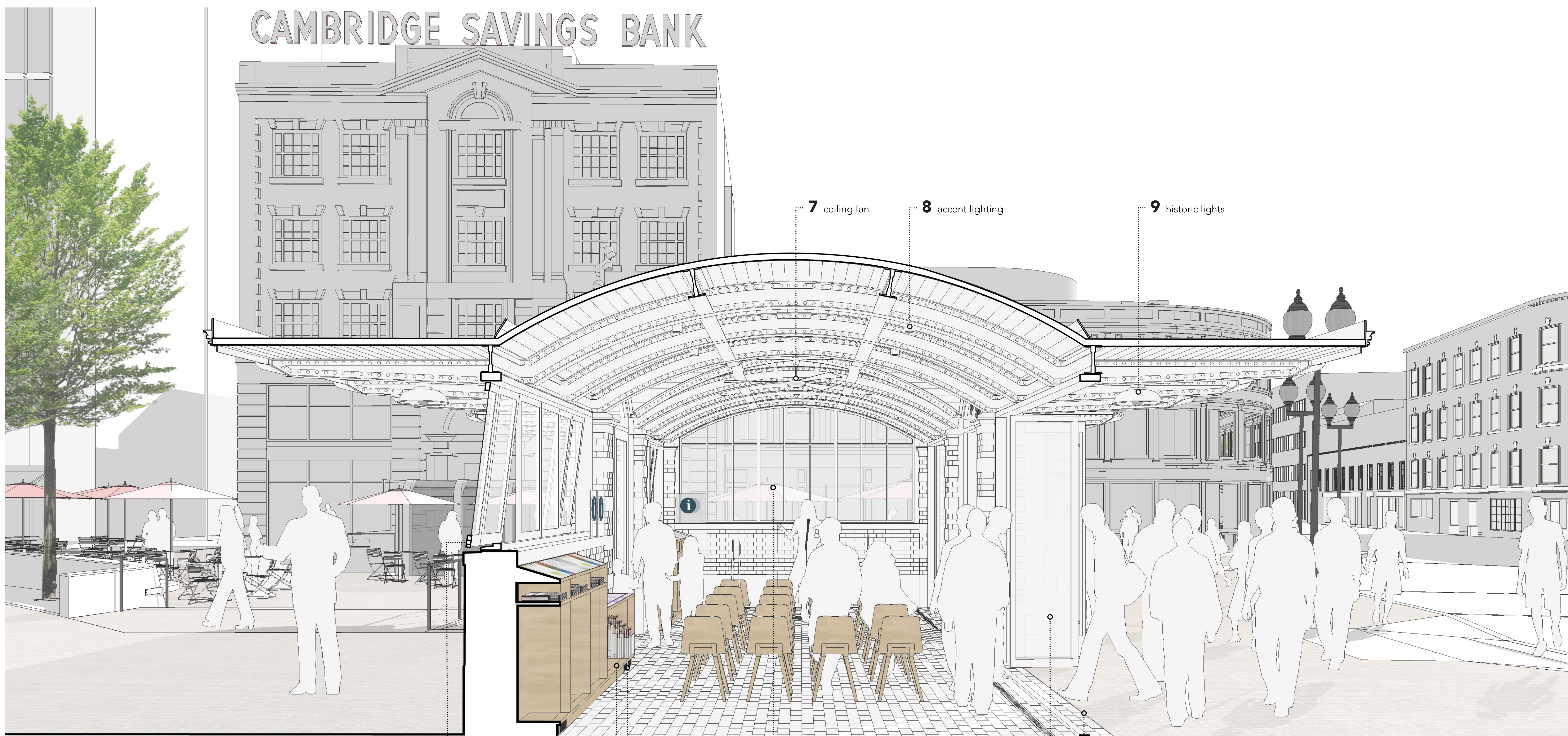


Plans (500 Sq.Ft.) - Diagrams

← NORTH



# Folding Glass Doors with Operable & Historic Windows



Section - East/West