

City of Cambridge  
Community Development Department

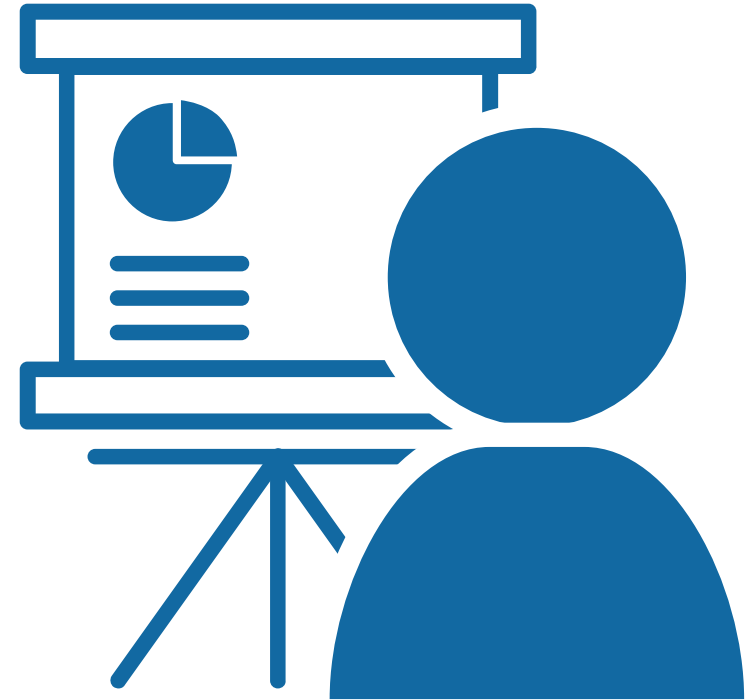
# Pedestrian Committee Meeting

January 28, 2021



# Meeting Agenda

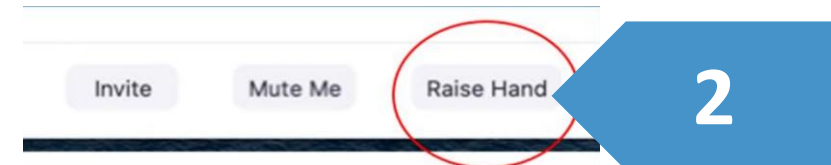
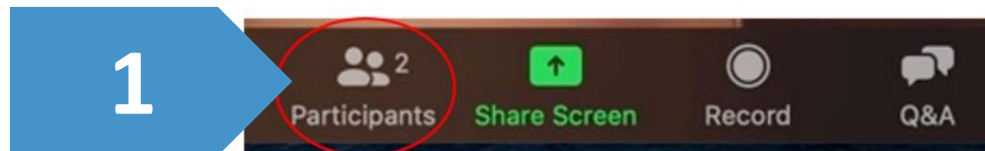
1. Zoom meeting protocols, minutes
2. City Updates
3. Development Project Updates
4. Public Comment
5. Committee Work
  1. Subcommittee Work
  2. Getting Around Cambridge Magazine
  3. 2021 Work Plan
6. Public Comment
7. Other Announcements



Minute taker: Jenny Turner-Trauring

# Committee Member Instructions

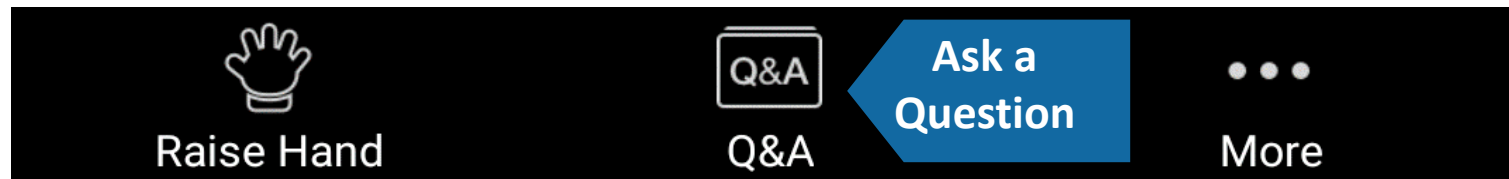
- Committee members may speak and show webcam video
  - Use "Raise Hand" button to help manage discussion
  - *New location* for "Raise Hand" for some users in "Reactions" button
  - \*9 to Raise Hand by phone
- Please stay muted unless speaking
  - \*6 to mute/unmute by phone



# Public Comment Instructions

- Members of the public are muted and cannot show webcam video
- Public can write questions or ask for assistance in Q&A window at any time
  - Questions may be submitted at any time and will be addressed as time allows, during discussion/comment periods
- During the Public Comment period, use the "Raise Hand" button to signal you have a question/comment. A staff member will then enable you to unmute yourself.
  - \*9 to Raise Hand by phone
  - \*6 to Mute/Unmute by phone
- Please be respectful! Participants will be removed for inappropriate behavior

Bottom Panel of  
Zoom Screen





**Minutes**



# Huron Ave/Glacken Field





N

GLACKEN  
FIELD

FRESH POND

PROP. MBTA BUS STOP  
EXIST. TOT LOT

PROP. LIMITS OF  
MULTI-USE PATH

CUSHING ST

HOL WORTHY ST

HURON AVE

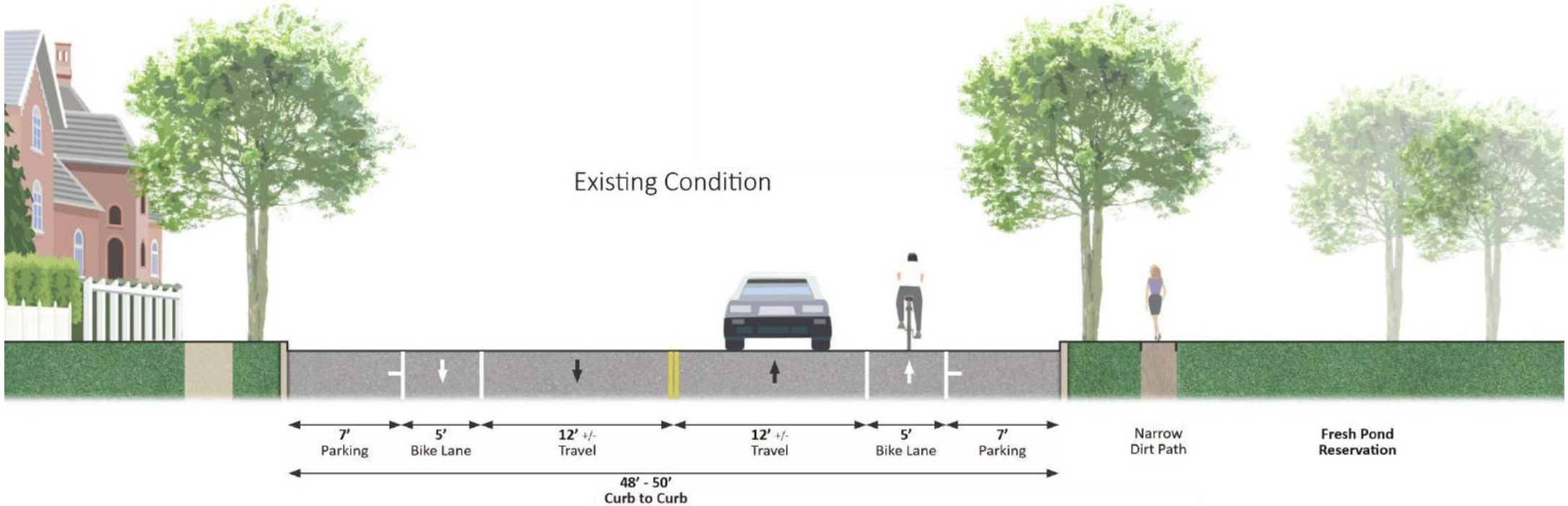
PARK AVE

ABERDEEN AVE

HURON AVE

FRESH POND PKWY













**DRAFT**



# Existing Crosswalks & New Crosswalks





# Redundant sidewalk opposite Sunoco







# Other City Updates



# Development Project Updates



# Alewife Park









- LEGEND:**
- Proposed New Street
  - Alewife Linear Path
  - - - Connection
  - Footprints of existing parking spaces and buildings
  - Existing Building
  - Proposed New Building
  - Natural Area





Alewife Linear Path

Russell Field

Jerry's Pond

Views

Views

Rindge Ave

Alewife Station

Alewife Brook Pkwy

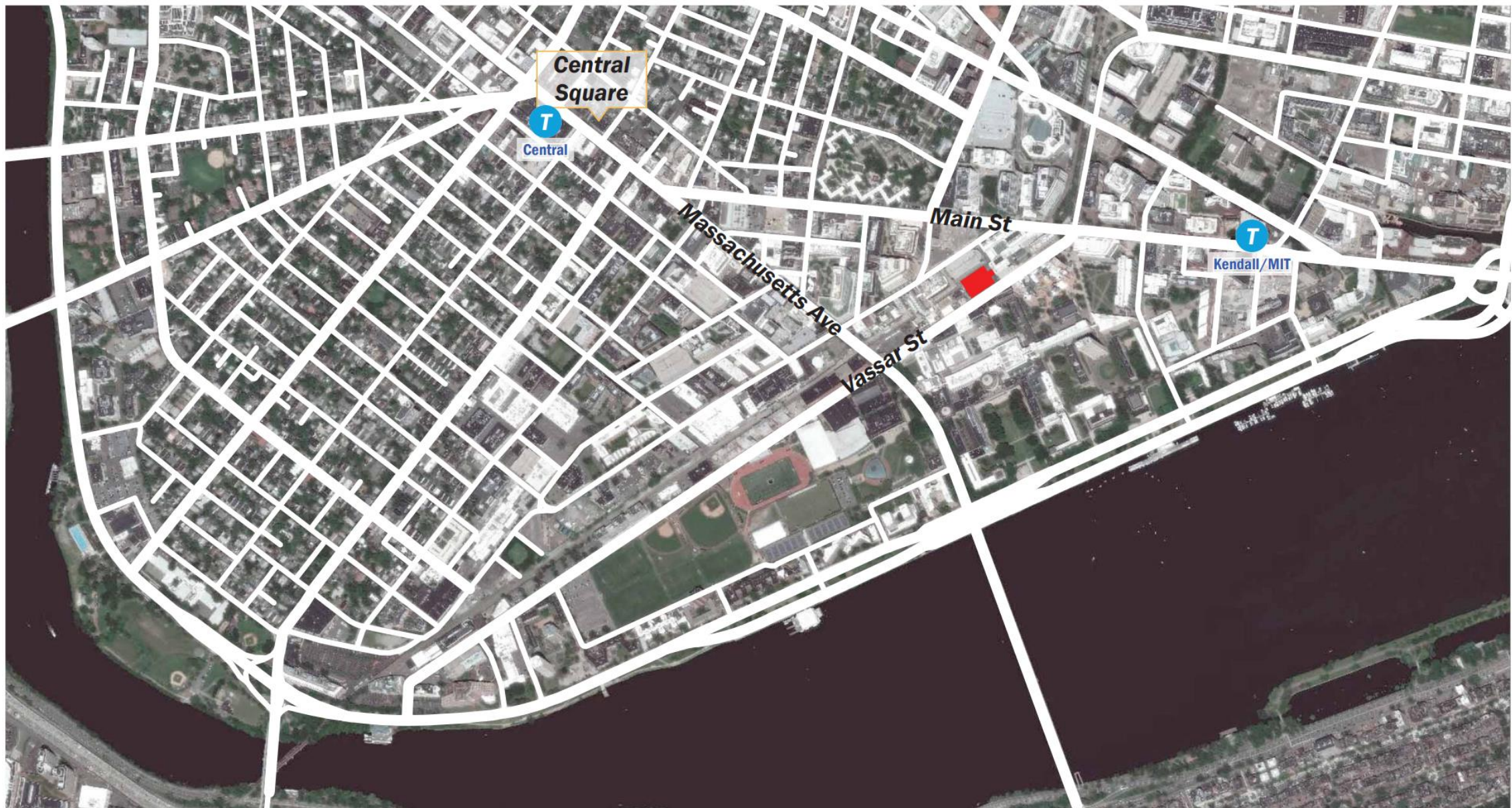
**LEGEND**

- Existing Alewife Linear Path
- Existing Pedestrian Path
- Proposed Pedestrian Path



**51 Vassar St**





Source Info: SOM

 Project Site

 Transit Station

Figure #1.1  
Site Context

SOM

MIT Stephen A. Schwarzman  
College of Computing  
Cambridge, Massachusetts



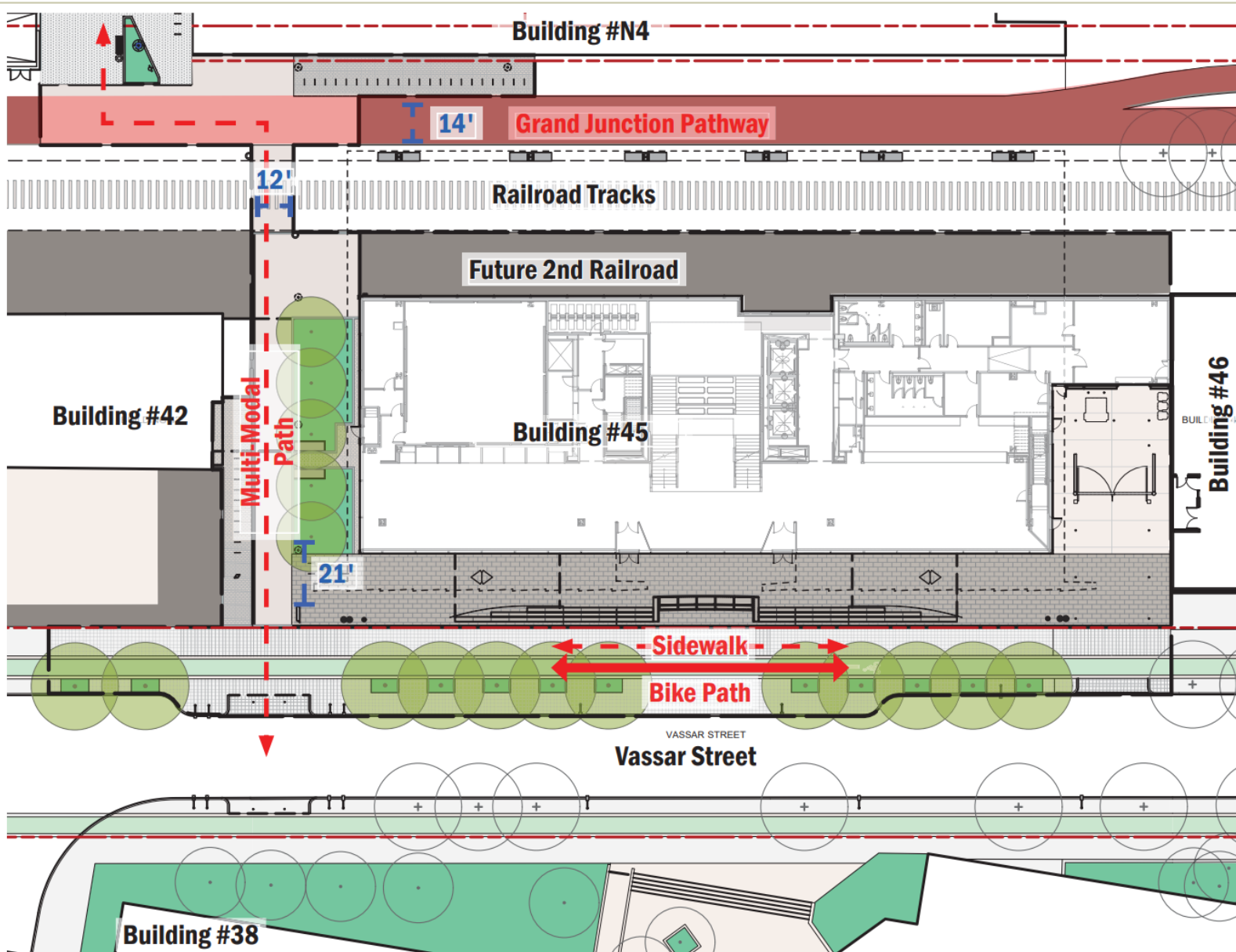


Figure #1.13  
Site Circulation Plan



Source Info: SOM

Figure #1.10c  
Project Renderings & Perspectives  
West Approach  
**MIT Stephen A. Schwarzman  
College of Computing  
Cambridge, Massachusetts**

SOM





Source Info: SOM

Figure #1.10d  
Project Renderings & Perspectives  
Grand Junction Pathway  
**MIT Stephen A. Schwarzman  
College of Computing  
Cambridge, Massachusetts**

SOM



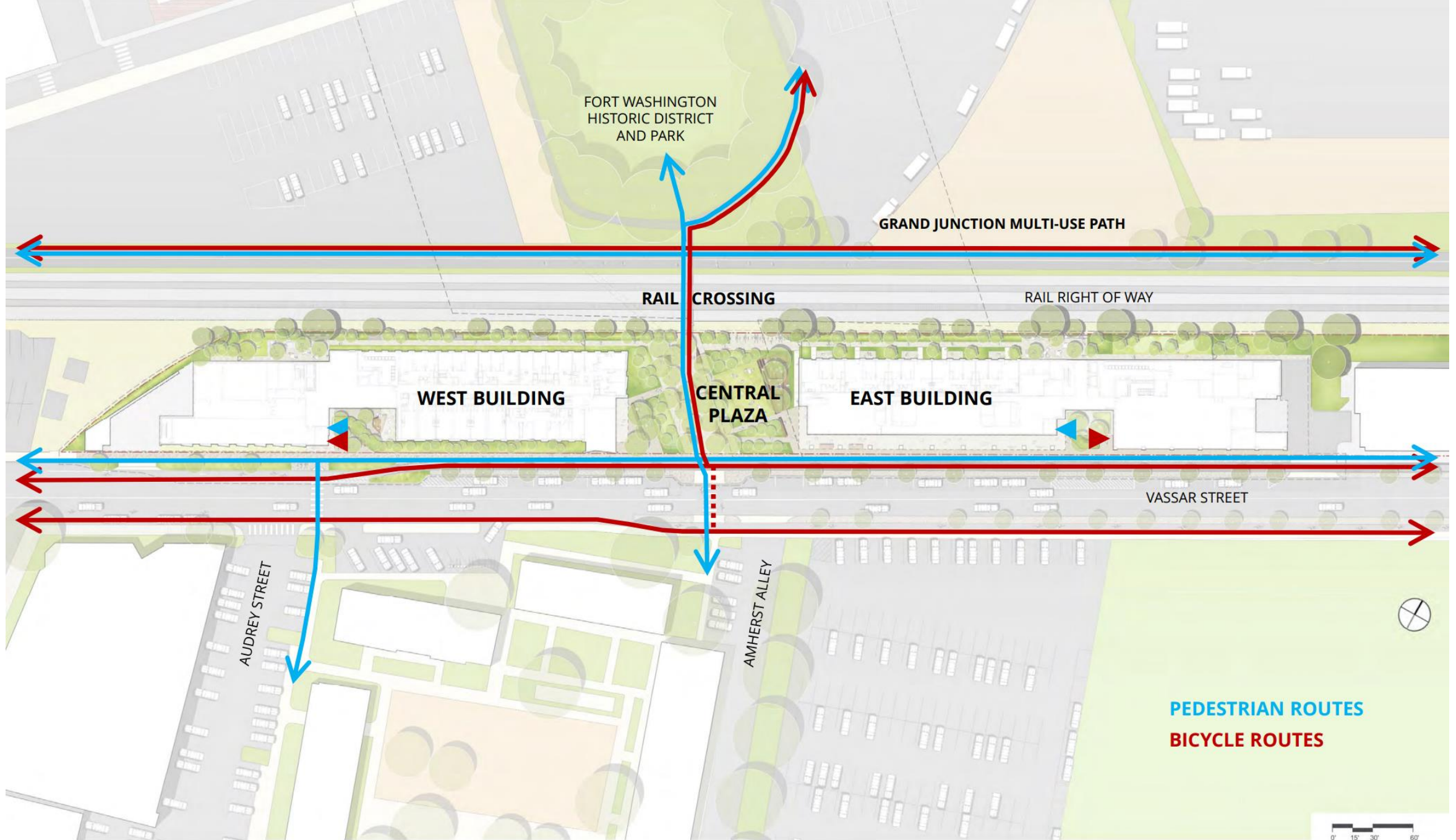
**269-301 Vassar St**





**1.3 EXISTING CONDITIONS** SITE CONTEXT MAP  
MIT WEST CAMPUS GRADUATE DORMITORY PROJECT



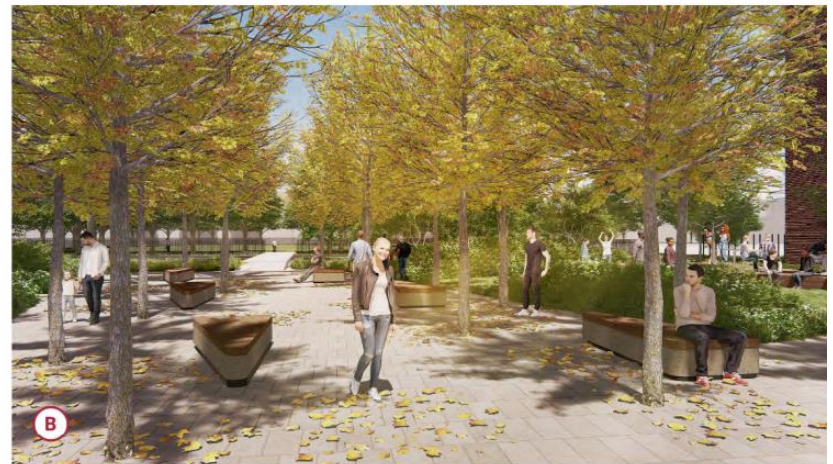






\*ALL TREES WITHIN PAVEMENT TO BE PLANTED WITHIN CONTINUOUS AREA OF STRUCTURAL SOIL BELOW

**2.5 PROPOSED DESIGN** CENTRAL PLAZA  
MIT WEST CAMPUS GRADUATE DORMITORY PROJECT



- ① PLAZA PATH
- ② URBAN GROVE
- ③ SEATING GROVE
- ④ LAWN
- ⑤ RAISED PLATFORM
- ⑥ PLANTED MOUND
- ⑦ ENTRY PLAZA





**3.9 RENDERING** CENTRAL PLAZA AERIAL  
MIT WEST CAMPUS GRADUATE DORMITORY PROJECT





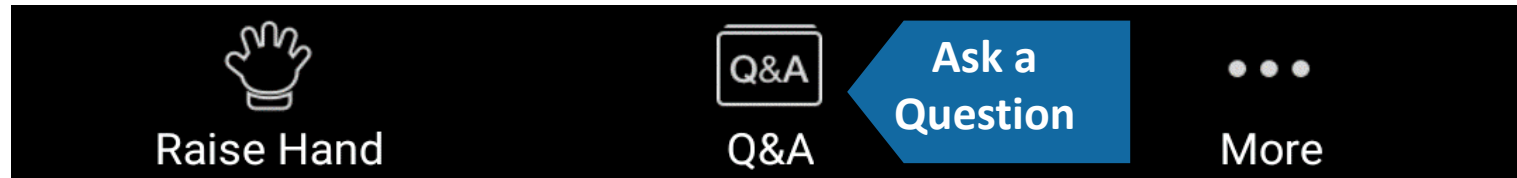


# Public comment

# Public Comment Instructions

- Use the "Raise Hand" button to signal you have a question/comment. A staff member will then enable you to unmute yourself.
  - \*9 to Raise Hand by phone
- Questions can also be submitted using the Q&A button.
- Questions and Comments should be directed specifically to the meeting's agenda items.

Bottom Panel of  
Zoom Screen

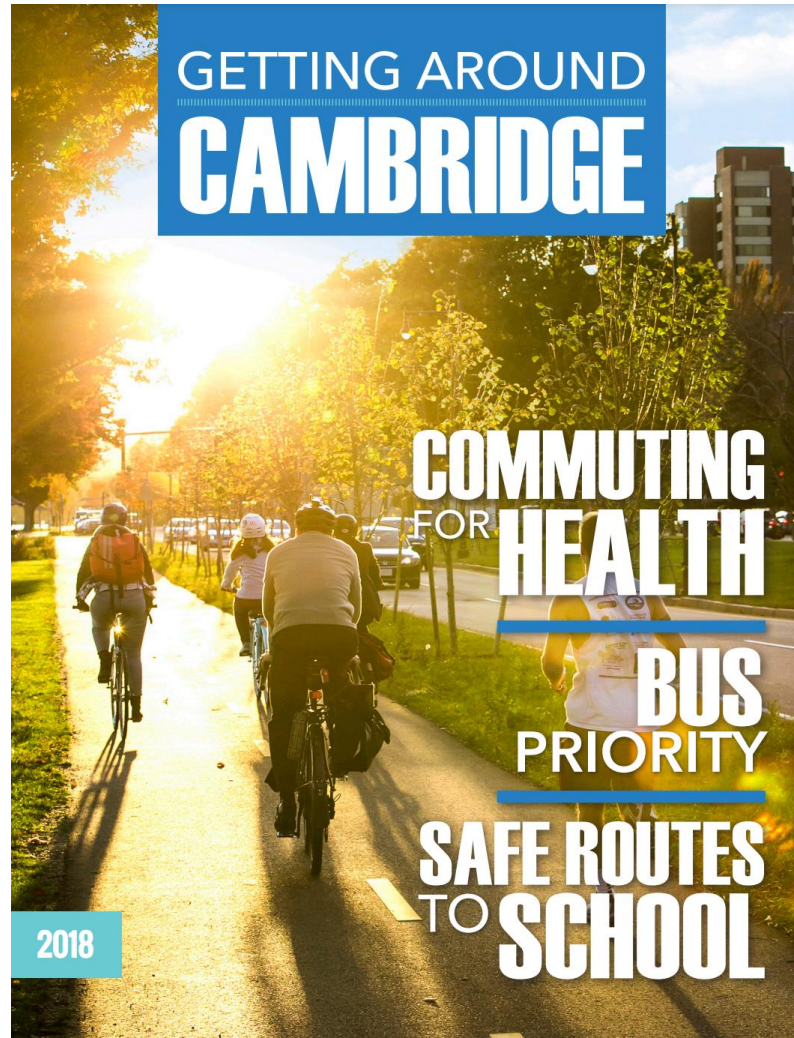






# Subcommittee Work

# Getting Around Cambridge Magazine







# 2021 Committee Work Plan

- Development Projects
- City Infrastructure Projects
- Outreach
  - Public Events (PARK(ing) Day, etc.)
  - Outreach to schools
  - Pop-up events
  - GirlTrek/Healthy walking
  - ???
- Communications
  - Getting Around Cambridge Mag
  - Social Media
  - ???
- Infrastructure/Safety
  - Intersections and Signals
  - Lighting
  - Sidewalk conditions
  - ???
- Community Walks
  - Nice walks in Cambridge
  - Pedestrian Committee “best hits”
  - ???
- Data Analysis and Visualization
  - Presentation by staff
  - ???



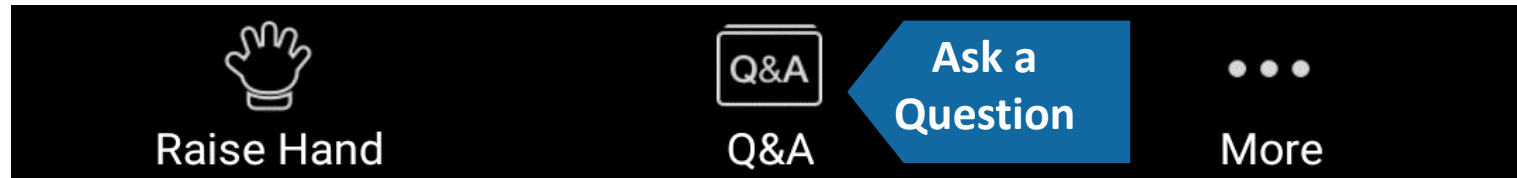
# Public comment



# Public Comment Instructions

- Use the "Raise Hand" button to signal you have a question/comment. A staff member will then enable you to unmute yourself.
  - \*9 to Raise Hand by phone
- Questions can also be submitted using the Q&A button.
- Questions and Comments should be directed specifically to the meeting's agenda items.

Bottom Panel of  
Zoom Screen





# Other Announcements





**Thank You**