

SITE COMPARISON - Carl Barron Plaza

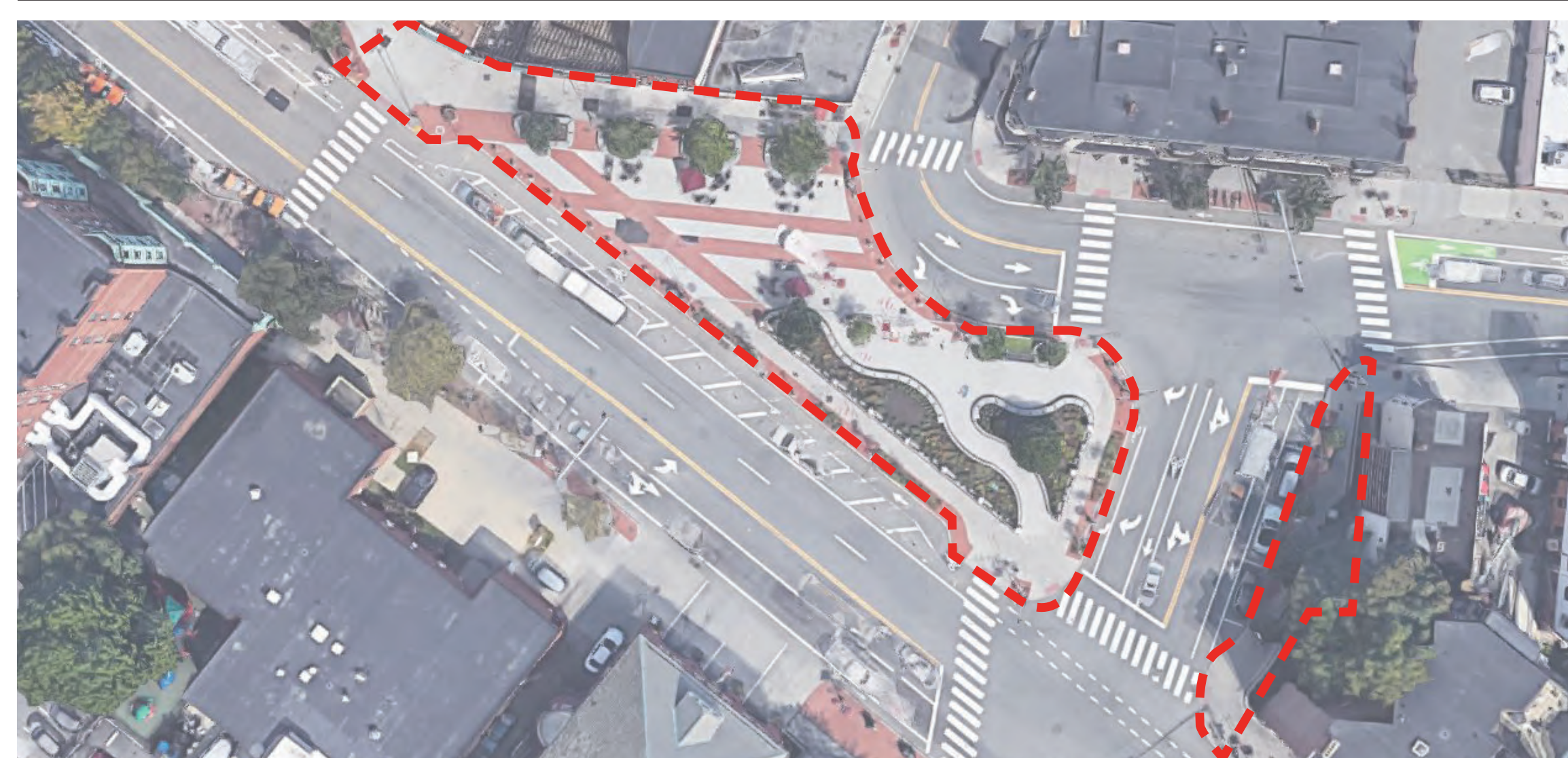
Plan View



CARL BARRON PLAZA

OVERALL: 7,352 ft² (0.17 ac) (---)
HARDSCAPE: 6,631 ft² (0.15 ac), 88%
SOFTSCAPE: 721 ft² (0.02 ac), 12%
TRANSIT HUB: 5,878 ft² (0.13 ac) (---)
PROGRAM / SITE USES

- Seating
- Circulation
- Public Transportation Hub
- Passive Recreation
- Adjacent Retail
- Adjacent Restaurant
- Art: Ritsuko Talio Sculptures



LAFAYETTE SQUARE

OVERALL: 18,845 ft² (0.43 ac) (---)
HARDSCAPE: 14,761 ft² (0.34 ac), 80%
SOFTSCAPE: 4,084 ft² (0.09 ac), 20%
PROGRAM / SITE USES

- Seating
- Circulation
- Passive Recreation
- Performance / Programmed Space
- Adjacent Restaurant / Outdoor Eating
- Art: Tile Sculpture



HARVARD SQUARE

OVERALL: 13,790 ft² (0.32 ac) (---)
HARDSCAPE: 13,684 ft² (0.31 ac), 97%
SOFTSCAPE: 106 ft² (0.01 ac), 3%
PROGRAM / SITE USES

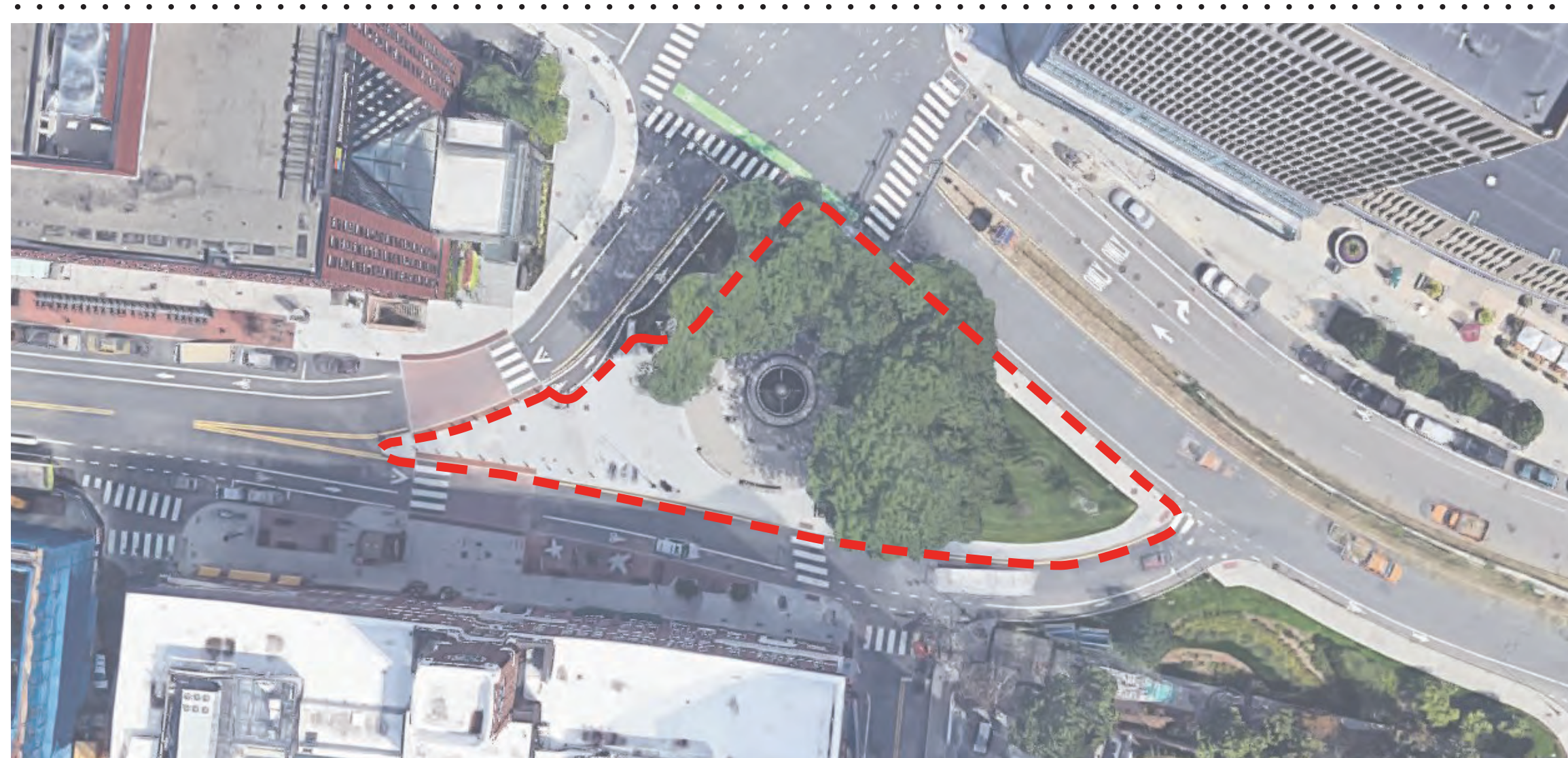
- Seating
- Circulation
- Public Transportation Access
- Passive Recreation
- Performance / Programmed Space
- Adjacent Restaurant
- On Site Retail



QUINCY SQUARE

OVERALL: 12,608 ft² (0.29 ac) (---)
HARDSCAPE: 5,953 ft² (0.14 ac), 48%
SOFTSCAPE: 6,655 ft² (0.15 ac), 52%
PROGRAM / SITE USES

- Seating
- Circulation
- Passive Recreation
- Adjacent Restaurant
- Adjacent Retail
- Art: D. Philips Bronze Spiral Sculpture w/Boulders



GALAXY PARK

OVERALL: 16,964 ft² (0.39 ac) (---)
HARDSCAPE: 10,604 ft² (0.24 ac), 62%
SOFTSCAPE: 6,360 ft² (0.15 ac), 38%
PROGRAM / SITE USES

- Seating
- Circulation
- Public Transportation Access
- Art: Sculpture w/ Fountain & Steam
- Passive Recreation
- Adjacent Restaurant
- Adjacent Retail

Site Character

