

# TORREY ARCHITECTURE

75 Kneeland Street  
Boston, MA 02111  
617-227-1477  
www.torreyarchitecture.com

**STRUCTURAL ENGINEER**  
Structures North Consulting Engineers, Inc.  
60 Washington Street, Suite 401  
Salem, MA 01970  
978-745-6817

**STEEPLEJACK/ CONTRACTOR**  
American Steeple & Tower  
373 Essex Street  
Salem, MA 01970  
978-744-7194

**LANDSCAPE ARCHITECT**  
Weinmayr/Jay Assoc. Inc.  
760 Main Street  
Waltham, MA 02451

**LIGHTING CONSULTANT**  
WSP USA  
75 Arlington Street, 9th Fl  
Boston, MA 02116

**COST CONSULTANT**  
Eljana Construction Consultants  
98 North Washington Street, Suite 109  
Boston, MA 02114

**EXTERIOR ELEVATIONS SURVEY**  
Existing Conditions Surveys, Inc.  
3398 Columbus Ave, #334  
Boston, MA 02116

No.	Description	Date
	MASS AVE WALL AND	
	TOWER PROJECT ESTIMATE SET	02/20/20
	REVISIONS	05/05/20
	REPORT	06/12/20
	CHC APPLICATION	09/08/20

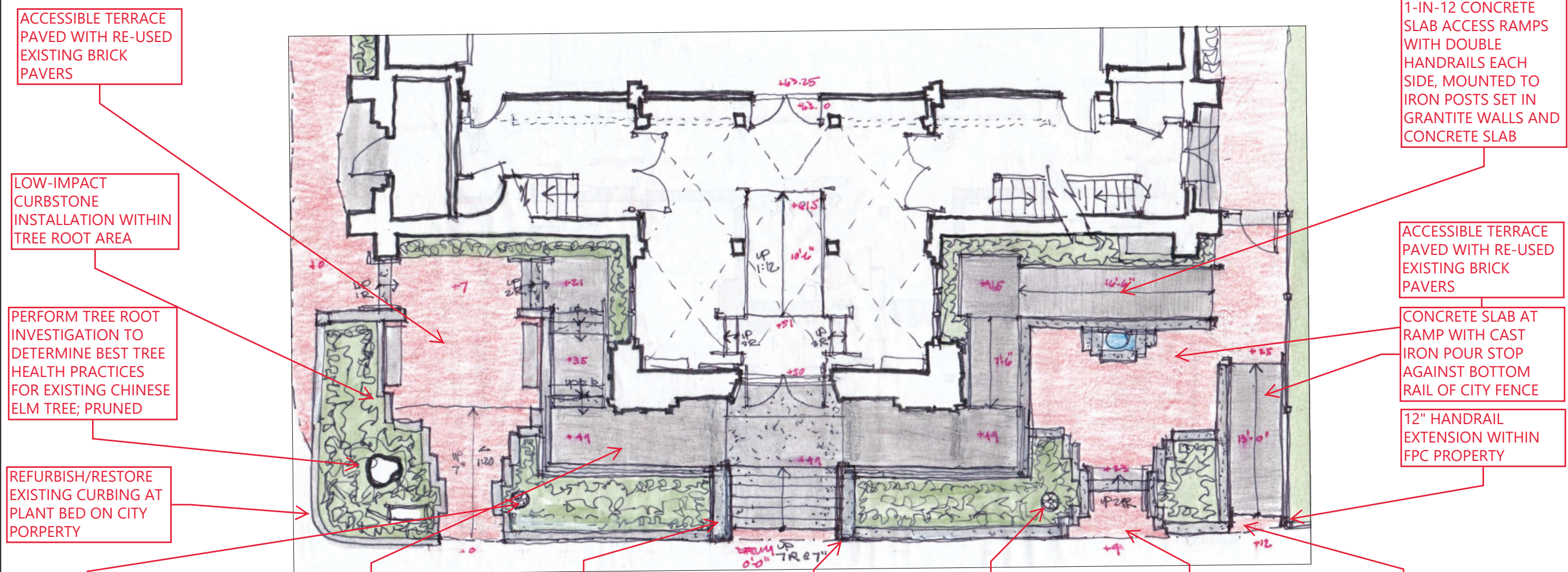
**FIRST PARISH  
CAMBRIDGE, MA**

**SITE PLAN/  
SITE DETAILS**

Project number	1802
Date	09-08-2020
Drawn by	DM
Checked by	DT

**CHC-27**

Scale AS NOTED



**ACCESSIBLE TERRACE PAVED WITH RE-USED EXISTING BRICK PAVERS**

**LOW-IMPACT CURBSTONE INSTALLATION WITHIN TREE ROOT AREA**

**PERFORM TREE ROOT INVESTIGATION TO DETERMINE BEST TREE HEALTH PRACTICES FOR EXISTING CHINESE ELM TREE; PRUNED**

**REFURBISH/RESTORE EXISTING CURBING AT PLANT BED ON CITY PORPERTY**

**LIGHT POLE ON CONCRETE FOUNDATION WITHIN PLANT BED**

**LEVEL CONCRETE LANDING PLATFORM AT NEW ENTRY DOOR ELEVATION**

**EXISTING GRANITE SLABS, STEPS AND CHEEKWALLS RECONFIGURED AT NEW LOCATION**

**12" HANDRAIL EXTENSION WITHIN FPC PROPERTY**

**LIGHT POLE ON CONCRETE FOUNDATION WITHIN PLANT BED**

**BRICK PAVERS BUTTED FLUSH WITH WITH CITY SIDEWALK PAVERS, TYP**

**1:50 CROSS-SLOPE TRANSITION FROM CITY SIDEWALK TO ACCESS RAMP**



**EXISTING EXPOSED FOUNDATION WALLS, TYP**

**APPROXIMATE HEIGHT OF PROPOSED FLAMED GRANITE BASE AT LANDING SLAB ELEVATION**

**GRANITE STEPS, SLABS AND CHEEKWALLS TO BE RELOCATED AND RECONFIGURED**

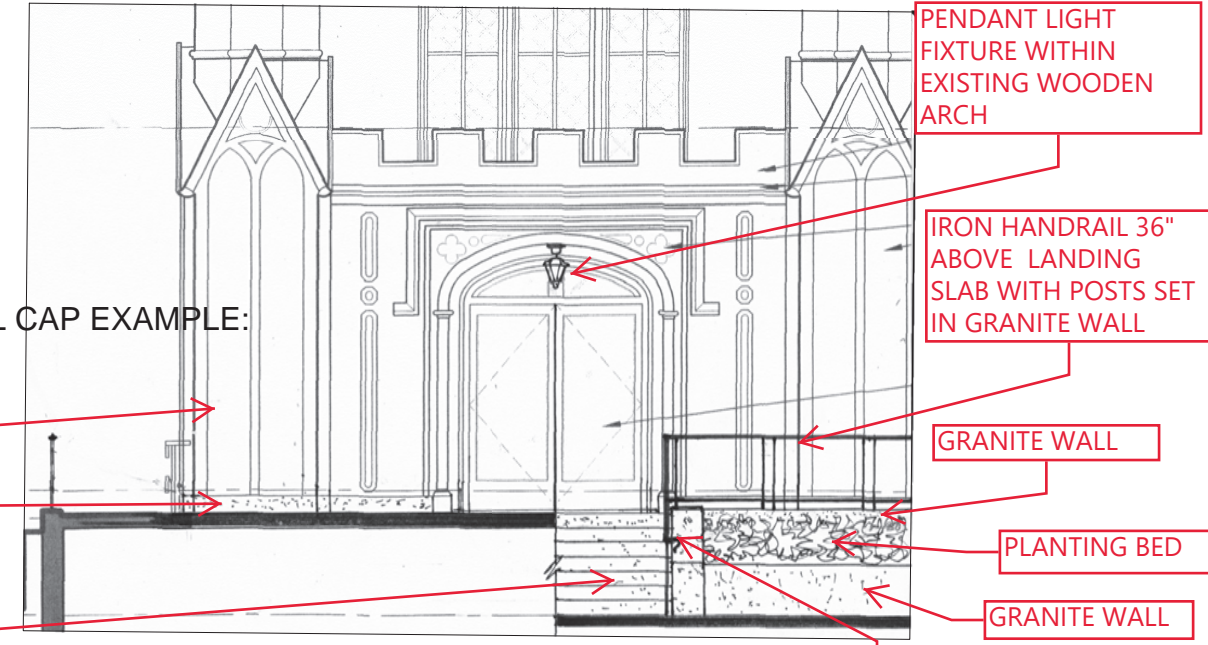


**MALLEABLE IRON HANDRAIL CAP EXAMPLE:  
JULIUS BLUM # 4429**

**EXISTING WOOD SIDING AND TRIM, RESTORED**

**FLAMED GRANITE BASE WITH CHAMFERED TOP**

**GRANITE STEPS, SLABS AND CHEEKWALLS TO BE RELOCATED AND RECONFIGURED**



**ELEVATION DETAIL AND SECTION**

**PENDANT LIGHT FIXTURE WITHIN EXISTING WOODEN ARCH**

**IRON HANDRAIL 36" ABOVE LANDING SLAB WITH POSTS SET IN GRANITE WALL**

**GRANITE WALL**

**PLANTING BED**

**GRANITE WALL**

**12" HANDRAIL EXTENSION WITHIN FPC PROPERTY**



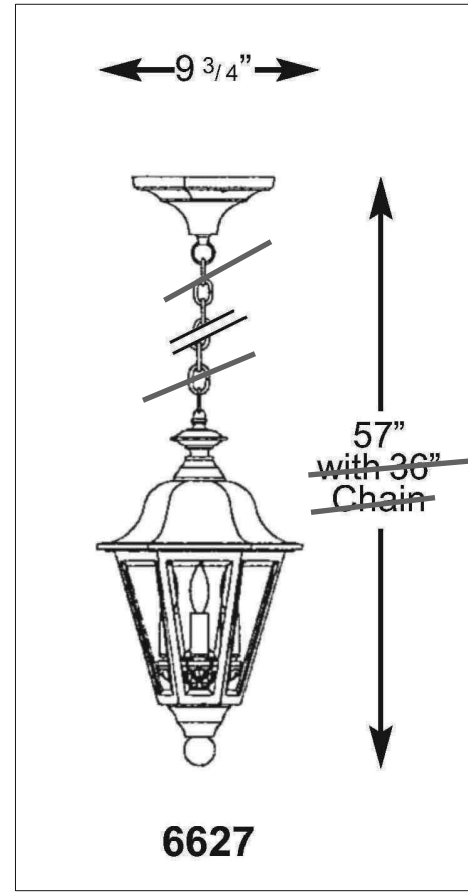
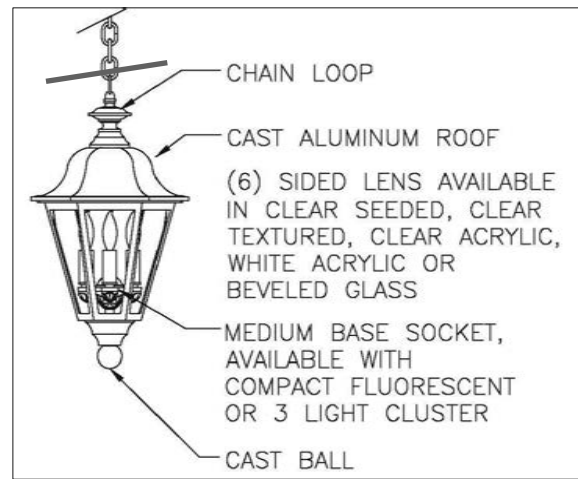
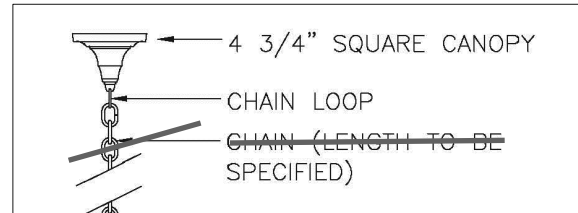












**SternbergLighting**  
ESTABLISHED 1923 / EMPLOYEE OWNED

166 Lawrence Avenue | Roslindale, MA 02126 | (617) 267-0882 | www.sternberglighting.com

**ARM NUMBER OF ARMS: 2**  
Number of Arms: Two Arms at 180 degrees (2)

**ARM FIXTURE: MS805ALED**  
The MS805ALED lantern is a modern replica of a popular styled octagonal lantern, with spikes. The cast aluminum hinged roof is equipped with a spike finial. The lantern has LED light sources with cool mounted, clear lighting optics. The lantern shall be UL listed in US and Canada.

**ARM LIGHT SOURCE: 16L30T5-MDL014**  
Number of LEDs: 16 LEDs, 10W for MDL19 (19L)  
Color Temp: 3000K (S)  
Distribution: Type 5 (T)  
Driver: Multi-Tap Dimmable Low-Voltage Driver - 130-277V, 140mA (MDL014)

**ARM OPTIONS: CSA**  
Lens: Clear Seeded Acrylic (CSA)

**ARM: 80LFPM**  
1/2" x 1/2"

**POLE: 931ZTO**  
The 12" tall decorative post shall be aluminum, one-piece cast construction. The 18 1/4" wide octagonal cast 2024 aluminum alloy base shall have the holes with eight recessed points in the base. The Model shall be Sternberg Lighting Number #930510 or #930510R for canopy base pole. The pole shall be U.L.C.T.L. listed in U.S. (Canadians, All pole heights to have a tolerance of ± 2"

Model: 9300 Champagne (S)  
Height: 12 Ft. (12)  
Shank Type: Tapered Octagon 12 Ft. (12)

**POLE CAP: PCG**  
The option tops the pole with a flat cap.

**FINISH: BK**  
The finish shall be powder coated to Black Smooth Finish. Prior to coating the assembly shall be chemically cleaned and etched in a 5-stage anodizing system which includes alkaline cleaning, rinsing, phosphoric anodizing, neutral sodium water rinsing, and non-chrome sealing to ensure corrosion resistance.

**Wind Load Evaluation**  
Consult Factory for wind-loading calculations for square or octagonal poles.  
Wind Speed: 80 mph  
Gust Factor: 1.14

10 3/4" x 1 1/2" Anchor Bolts, 1/2" Bolt Circle, Diamond pattern  
Access Door Orientation: 0°  
Street Side Orientation: 180°

**SternbergLighting**  
ESTABLISHED 1923 / EMPLOYEE OWNED

166 Lawrence Avenue | Roslindale, MA 02126 | (617) 267-0882 | www.sternberglighting.com

12' 4 1/2"  
12' 4 1/2"  
12' 4 1/2"  
1" x 4 1/2"

**MS805ALED-3**

To light spire: Floodlights concealed behind parapets; Insight 9-spot 100w, 3000K

To light belfry chamber, visible through tracery; internal globe fixture within open belfry; Sternberg XR-LED acorn pendant mounted.

To light narthex lobby and exterior through windows and glazed door and transom; indirect/luminous pendant bowl fixtures (6): Beta-Calco Arella, 23" 3000K

To light tower from all sides: Floodlights concealed behind parapets (2) and mounted at roof ridge behind tower (1); Insight 9-spot 100w, 3000K

To light lancet window internally, visible through tracery and window muntins; Celestial Cassiopeia low profile LED strip lights concealed behind muntins.

to light entry archway: Sternberg #6627 pendant with no chain

To light site and flood facades: post-top pole-mounted lantern pairs with arms, Sternberg #MS805 ALED-3 Type 5 3500K, with double flood lights atop pole Insight # 9-spot with glare shields

**SternbergLighting**  
ESTABLISHED 1923 / EMPLOYEE OWNED

**TORREY ARCHITECTURE**

75 Kneeland Street  
Boston, MA 02111  
617-227-1477  
www.torreyarchitecture.com

**STRUCTURAL ENGINEER**  
Structures North Consulting Engineers, Inc.  
60 Washington Street, Suite 401  
Salem, MA 01970  
978-745-6817

**STEEPLEJACK/ CONTRACTOR**  
American Steeple & Tower  
373 Essex Street  
Salem, MA 01970  
978-744-7194

**LANDSCAPE ARCHITECT**  
Weinmayr/Jay Assoc. Inc.  
760 Main Street  
Waltham, MA 02451

**LIGHTING CONSULTANT**  
WSP USA  
75 Arlington Street, 9th Fl  
Boston, MA 02116

**COST CONSULTANT**  
Eliana Construction Consultants  
98 North Washington Street, Suite 109  
Boston, MA 02114

**EXTERIOR ELEVATIONS SURVEY**  
Existing Conditions Surveys, Inc.  
3398 Columbus Ave, #334  
Boston, MA 02116

No.	Description	Date
	MASS AVE WALL AND TOWER PROJECT ESTIMATE SET	02/20/20
	REVISIONS	05/05/20
	REPORT	06/12/20
	CHC APPLICATION	09/08/20

**FIRST PARISH CAMBRIDGE, MA**

**LIGHTING**

Project number: 1802  
Date: 09-08-2020  
Drawn by: DM  
Checked by: DT

**CHC-31**  
Scale: AS NOTED