

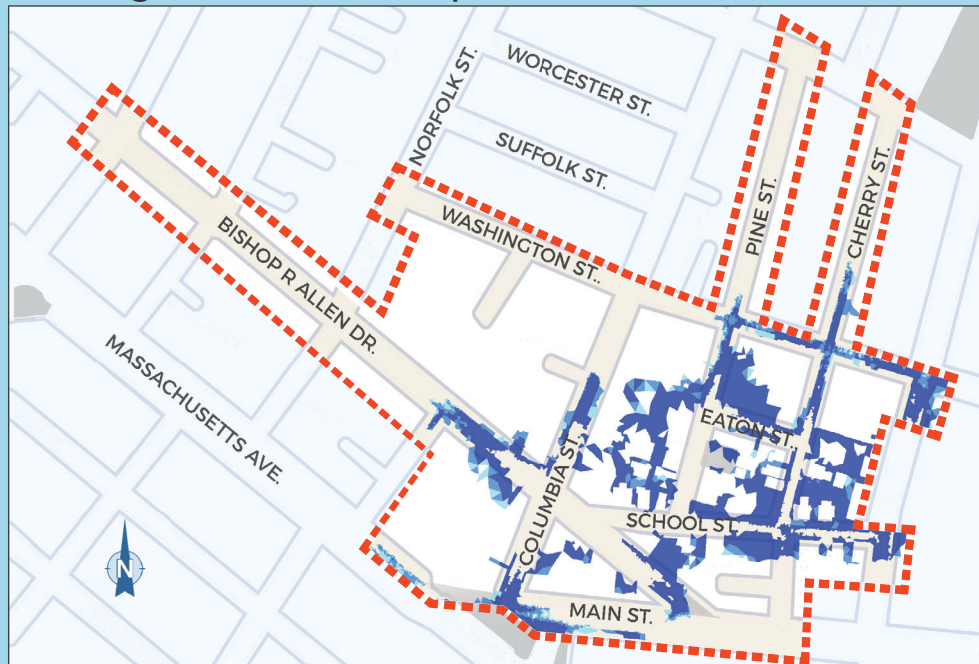
Many neighborhoods in the Cambridge area are susceptible to the impacts of flooding. Particularly at risk are those properties with basement spaces and first levels at a lower elevation. The City's assessment on climate change vulnerability has shown the risk of flooding is increasing over time, as the impacts of climate change lead to more frequent and intense rainfall events.

The Port has experienced significant flooding in the past. The City is focusing on this area in the coming years via **The Port Project** to improve these conditions.

The maps below highlight areas of flooding if nothing is done ("**Existing Conditions**") and the potential areas of flooding once this project is complete ("**Storage Tanks Installed**").

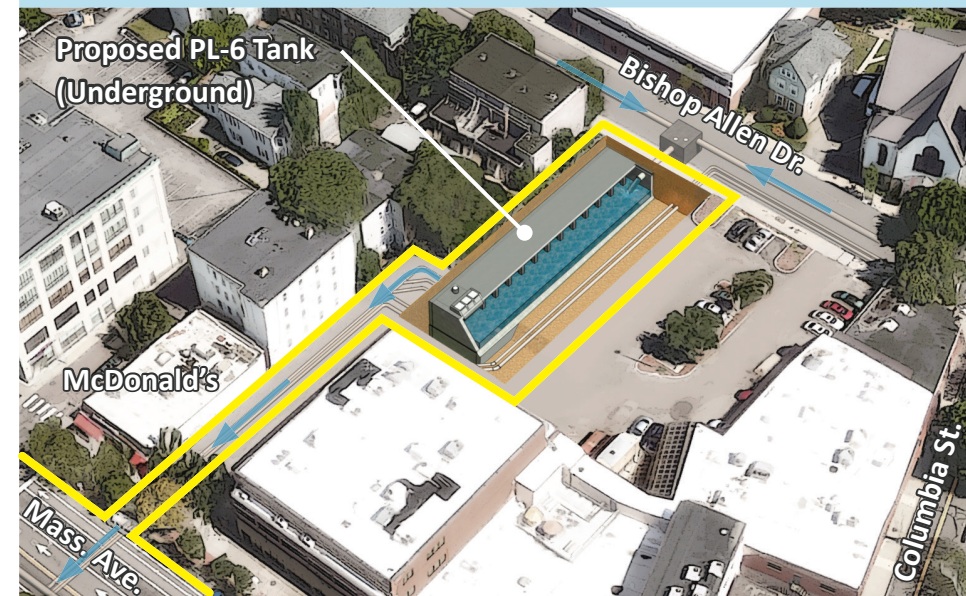
While change remains an inevitable process, infrastructure projects like these will decrease future flooding risks.

**Existing Conditions - Frequent / Smaller Storms**



Anticipated flooding for a 2030, 10 year / 24 hour storm

**Proposed PL-6 Storage Tank Section**



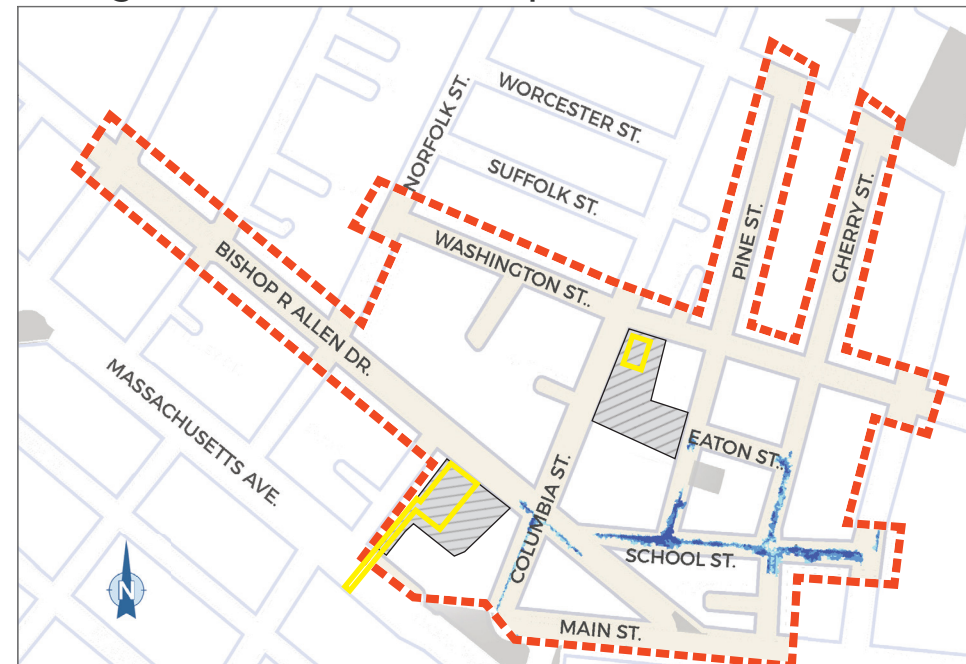
By building two underground storage tanks, stormwater during rain events will be captured and pumped to systems that can carry the water away from The Port to the Charles River, via a Mass. Ave. storm pipe.

**Phase 1** includes building a stormwater tank in Parking Lot 6 (PL-6) across from St. Paul's AME Church, highlighted in yellow above, likely to begin construction in Summer 2017.

**Phase 2** includes installation of a second stormwater storage tank, along with other roadway and sidewalk improvements.

Residents and business owners in the project area will be notified before the start of the community process.

**Storage Tanks Installed - Frequent / Smaller Storms**



Anticipated flooding for a 2030, 10 year / 24 hour storm

**Example of Storage Tank Construction**



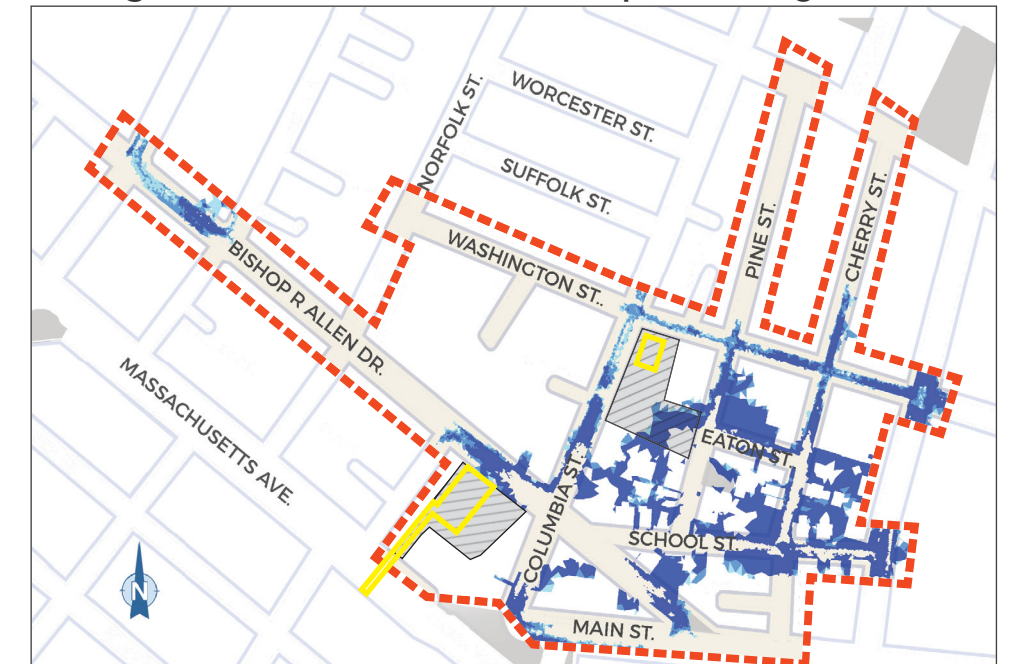
**What is a 10 Year Storm ?**

A 10 year storm is a frequent / smaller storm that can have drastic effects on the community. The 10 year storm has a 10% chance of happening in any year, making the average time between storms of this size 10 years.

**Map Key**

- Project Limits
- Flooding Areas
- Stormwater Storage Tanks
- Project Parcels

**Storage Tanks Installed - Less Frequent / Larger Storms**



Anticipated flooding for a 2030, 25 year / 24 hour storm



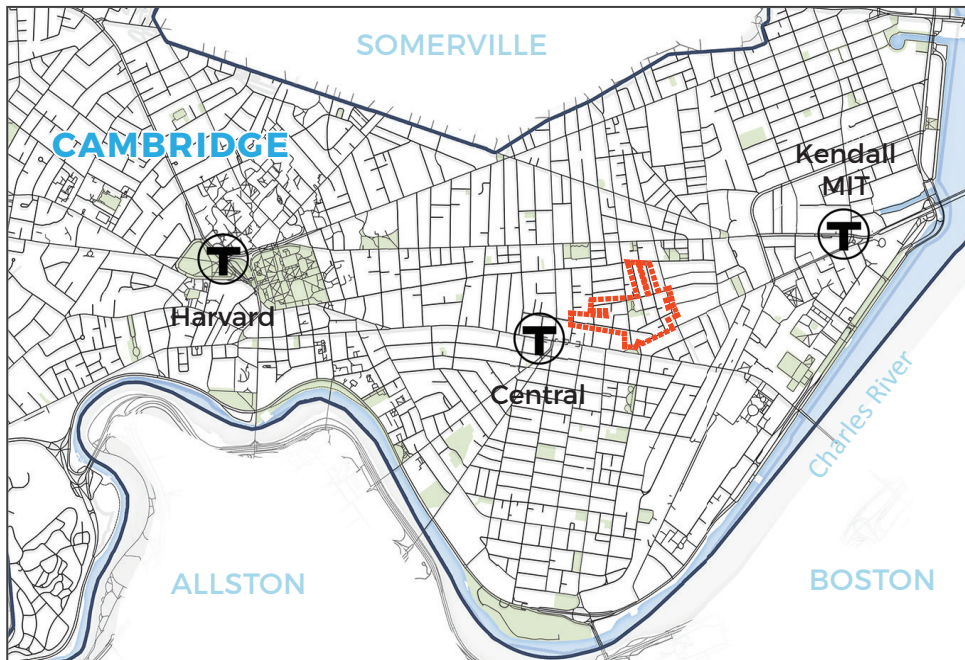
Flooding on Bishop Allen Drive, 2010



## DID YOU KNOW?

### THE PORT PROJECT

In the next five years, the City will spend over \$35M on sewer, drainage, water, street and sidewalk improvements in The Port. This work will include constructing two underground stormwater storage tanks. These stormwater tanks will significantly reduce the frequency of flooding, but the area will still be vulnerable to flooding during less frequent / larger storms.



The Port Project – Location Map

## FLOW: A Grant Program for The Port CAMBRIDGE ARTS



Cambridge Arts, the official arts agency for the City of Cambridge, invites artists, collaborative groups, entrepreneurs, organizations, businesses, or schools to submit applications to a one-time grant program designed to inspire and support the creation of new artistic and cultural projects that reveal and respond to The Port neighborhood.

Applicants must be artists or an organization, individual, or other group who will partner with an artist. All forms of artistic practice are welcome. Multiple projects will be selected to be implemented between 2017 and 2021. Projects may be indoor or outdoor, temporary or long-term, programmatic or structural.

**FLOW: A Grant Program for The Port** is funded by percent for-art funds attached to The Port Project construction work. Grant guidelines and applications will be released Fall 2016. Please stay tuned for schedule of public information sessions.

For more information please contact:

CAMBRIDGE | ARTS  
partnering with

### FLOW: A Grant Program for The Port

Lillian Hsu, Director of Public Art and Exhibitions, Cambridge Arts  
lhu@cambridgema.gov 617.349.4389  
[www.cambridgeartscouncil.org](http://www.cambridgeartscouncil.org)



### The Port Project

Kathy Watkins, City Engineer, Cambridge DPW  
kwatkins@cambridgema.gov 617.349.4751

KyAnn Anderson, Community Relations Manager  
community.cambridge@kleinfelder.com 617.498.4708

[www.cambridgema.gov/theworks/theport](http://www.cambridgema.gov/theworks/theport)

partnering with



# THE PORT PROJECT CITY OF CAMBRIDGE OVERVIEW

FLOODING

STREETS & SIDEWALKS

PUBLIC ART

NOVEMBER 2016