

**River Street
Reconstruction**

Purpose of this Presentation

- **See the primary and alternate design concepts: Sculptural Ribbon and Complementary Structures**
- **Ask your questions or clarify design concepts**
- **Tell us your comments on the Carl Barron Plaza design concept**

Shared Design Goals Review

Inclusive	Attract a wide range of users while preserving usability for the existing regulars
Activated	Create a vibrant space through everyday activities and special programming
Safe	Create a feeling of safety for everyone
Flexible	Allow for a wide range of uses and activities that can evolve over time
Attractive	Improve the perception of the space
Comfortable	Provide seating, lighting and amenities that promote short- and long-term lingering
Multimodal	Ensure pedestrian and bicyclist flow, and coordinate with transit users' needs
Functional	Provide materials and amenities that are functional and easily maintained
All-Season	Provide comfortable year-round use and reduce microclimate influence

Design Givenes for Concepts

- Provide **direct pedestrian routes** through and around plaza (8-foot minimum width)
- Maximize **tree plantings** and green space
- Provide **flexible plaza areas** for a variety of activities
- Site **transit shelters** at all 3 bus stop areas
- Identify a place for **MBTA operators booth** with visibility to all three bus stops and layover area
- Establish **bus boarding areas** (8-foot minimum widths)
- Create a **separated bicycle facility** (6-foot-6-inch minimum width)
- Relocated **Carl Barron Memorial** within the plaza



Site Constrained by Utilities + Subway

- Major public and private utilities
- Shallow utilities (electric, telecommunications)
- Sewer lines
- Red Line subway under Massachusetts Avenue
- Sanitary and drainage lines



Urban Design Guidance

Developed with City's Design staff,
Central Sq. Business Improvement
District (BID) & Stakeholders Over the
Past Six Months:

- Establish Carl Barron plaza as a Focal Point
- Be Bold, Creative, Playful and Whimsical
- Provide enough height to be visible from a distance, but also a pedestrian scale
- Use repetition to strengthen the visual unity of the plaza
- Build in capacity for placemaking, functionality and programming
- Apply lighting effects and color to enhance vibrancy
- Represent the diversity and artistic culture of the Central Square Community



Design Inspiration



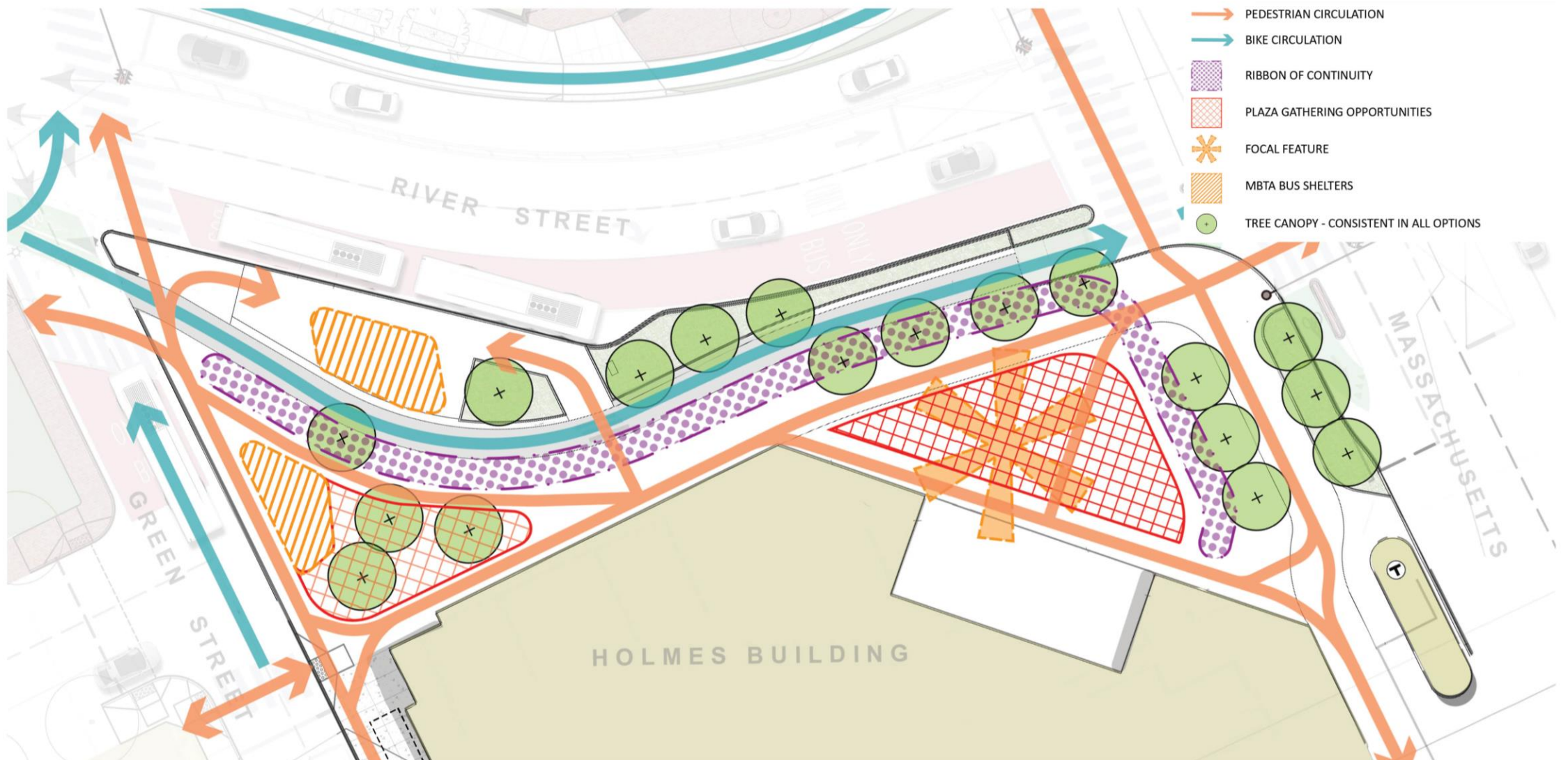
Design Inspiration



Fundamental Elements



Conceptual Diagram



Two Refined Concepts

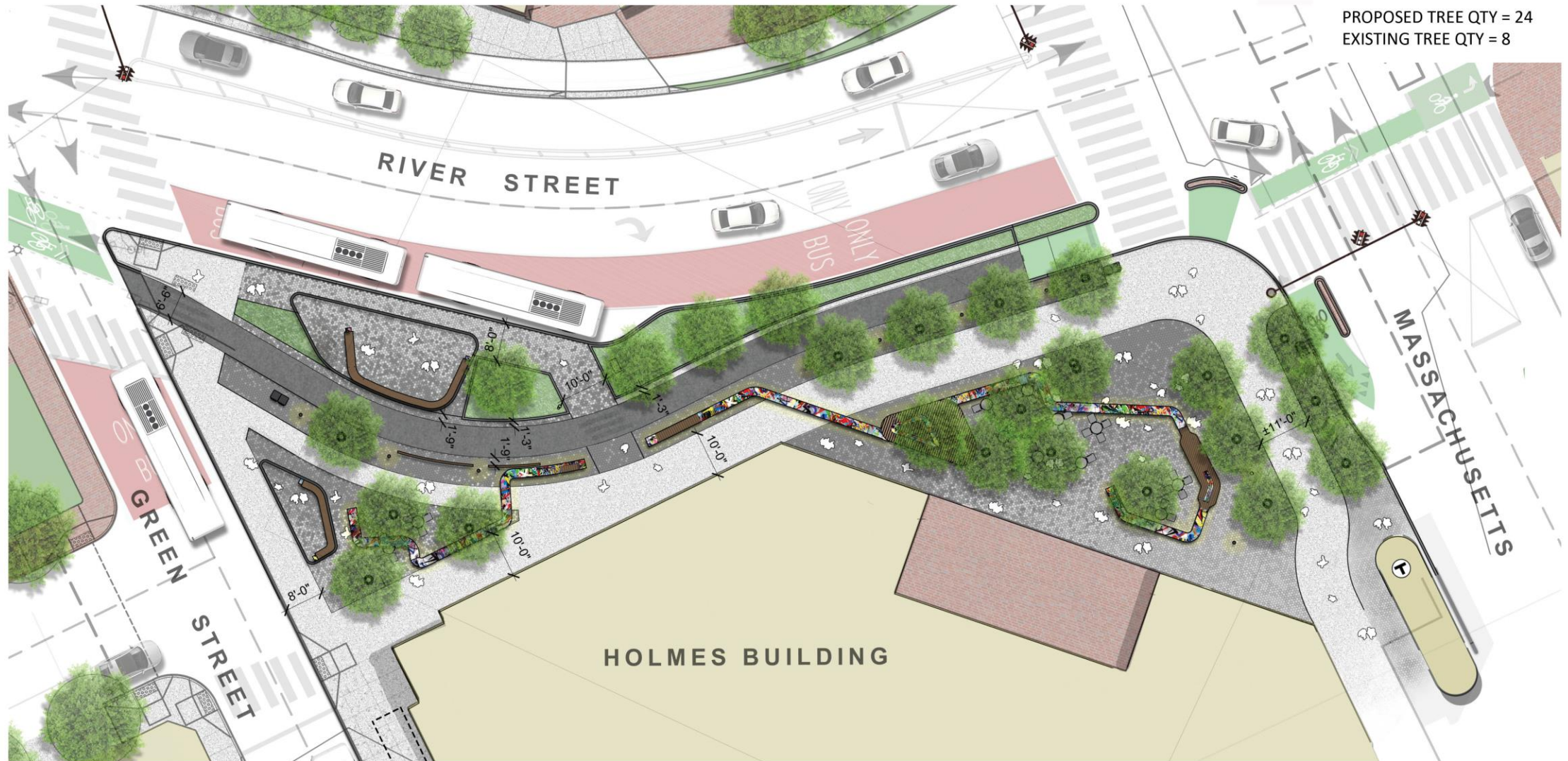


Sculptural Ribbon



Complementary Structures

Sculptural Ribbon



Sculptural Ribbon



Sculptural Ribbon



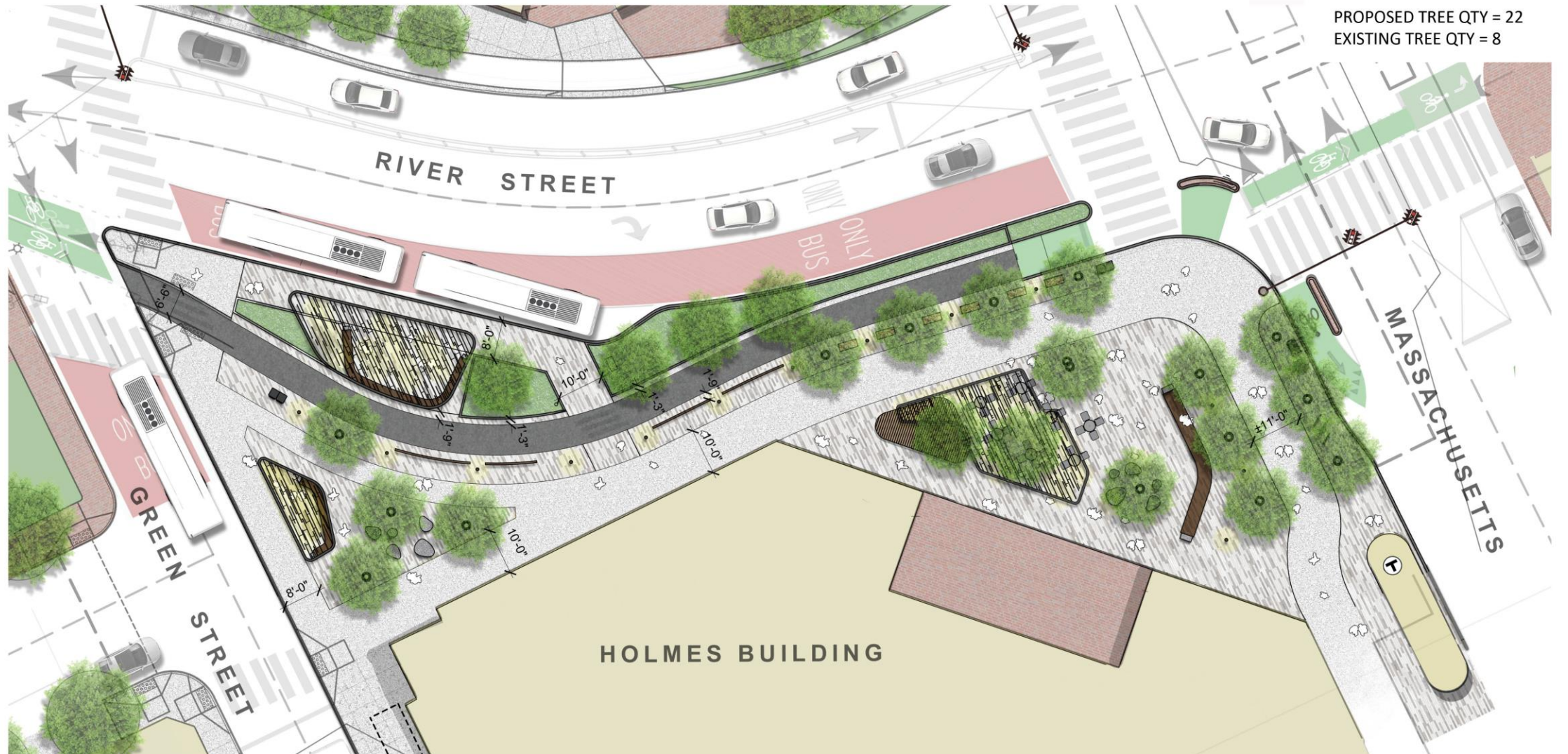
Sculptural Ribbon



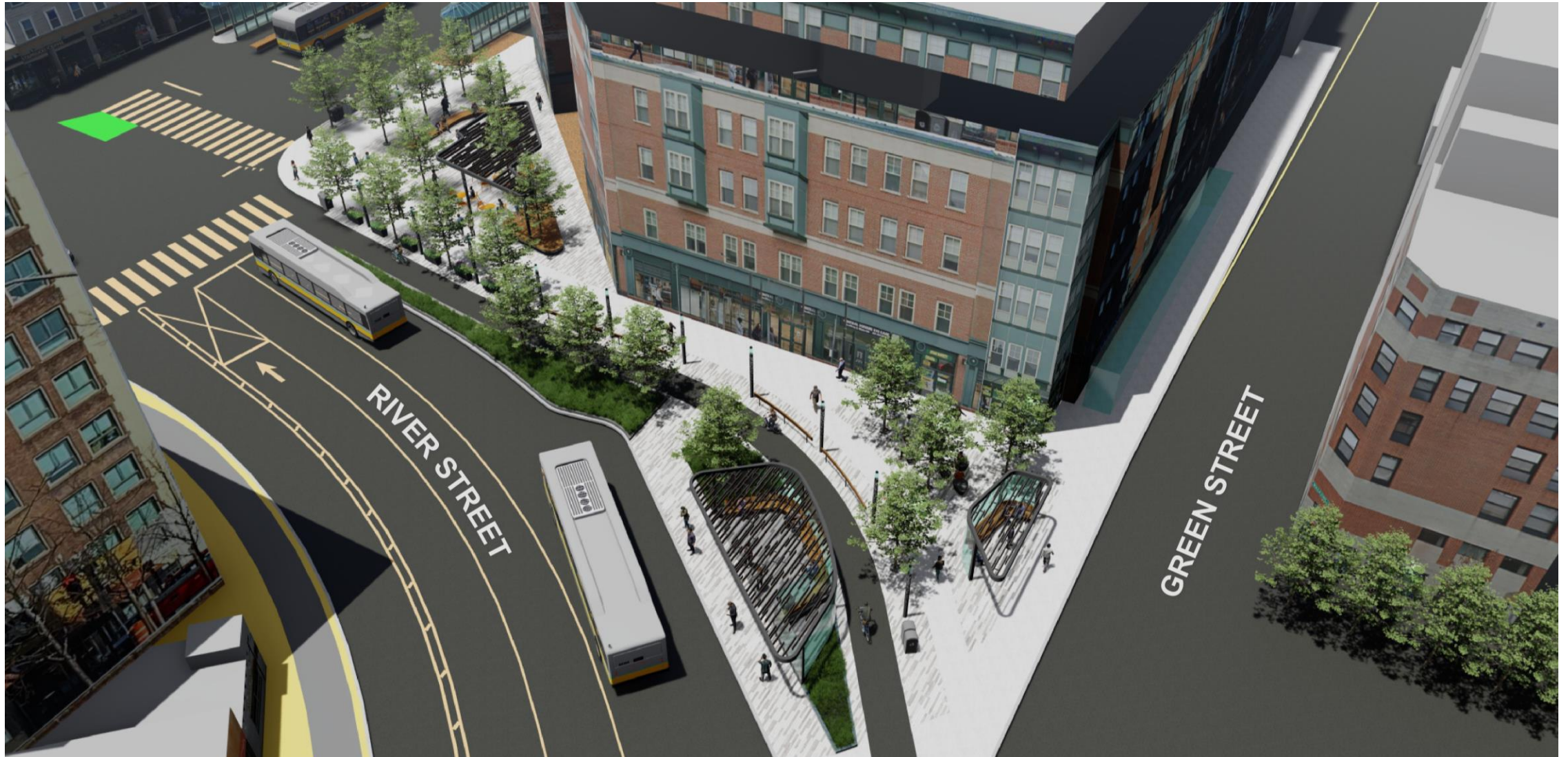
Sculptural Ribbon



Complementary Structures



Complementary Structures



Complementary Structures



Complementary Structures



Complementary Structures



Tell us what you think!

What plaza characteristics do you want to see in Carl Barron Plaza?

What seating features are most important?

What informational features are most important?

**Thank you
for adding
more trees!**

**Love the
design!**

Next Steps

CambridgeMA.gov/RiverStreet



[Community Development Calendar](#) [Projects](#) [Publications](#) [Forms](#) [Contact Us](#) [cambridgema.gov](#)

Text Size: [A](#) [A](#) [A](#)

COMMUNITY DEVELOPMENT DEPARTMENT
344 Broadway

CLIMATE & ENERGY

ECONOMIC DEVELOPMENT

FACTS & MAPS

HOUSING

PARKS & PLAYGROUNDS

PLANNING & URBAN DESIGN

TRANSPORTATION

ZONING & DEVELOPMENT

[CDD](#) > [Projects](#) > [River Street Reconstruction](#)

River Street Reconstruction

Take our [survey](#) and tell us how River Street works for you today!

The River Street Reconstruction project will upgrade the sanitary sewer, stormwater and water subsurface infrastructure while developing a new surface design for River Street, the bus terminal area at River and Magazine Streets near Central Square, and Carl Barron Plaza. The project aims to create a streetscape design that meets the needs of all the various users and in a way that engages the local community, contributes to overall enhancement of the neighborhood, and meets the City's goals related to infrastructure, transportation, and urban design.

The concurrent design of Carl Barron Plaza, the significant open space at the heart of Central Square will include consideration of public art, fixed and/or unfixed furniture, access, plantings, and landscaping. The design must also consider the complexity of transportation needs related to the bus bays adjacent to the Plaza and people moving through the plaza.

The community outreach and design processes will occur throughout 2019 and into early 2020. Construction is anticipated to begin in Spring 2020.

[Click here to sign up for email updates on this project.](#)

[Click here to provide general comments and feedback.](#)

The **Public Input Map** is now closed, but you can still access it through the link to see what input was provided on issues and opportunities along River Street and in Carl Barron Plaza. Soon we will be posting a survey to understand how you use River Street today so that we can use that input in the design and also compare to a similar survey after the construction is complete.

Quick Links

I'd like to learn more about...

Neighborhood or Square

Current Projects...



[Click the Map to Explore Cambridge](#)

A 5-STAR Community and National Leader in Sustainability



- [The Latest](#)
- [Schedule](#)
- [Description](#)
- [Community Process](#)
- [Documents](#)
- [Carl Barron Plaza](#)
- [Contact](#)

September 2019

The sixth Working Group meeting will be held on **Tuesday, September 24, from 6:00-8:00PM at the Manning**

Video Presentation

[Click here to visit video presentation](#)

URL:

<https://www.youtube.com/watch?v=e2vJcIngaWs>



THANK YOU!

riverstreet@cambridgema.gov

Additional Slides

Design Inspiration



Design Inspiration



Design Inspiration



Activation



Activation



Activation

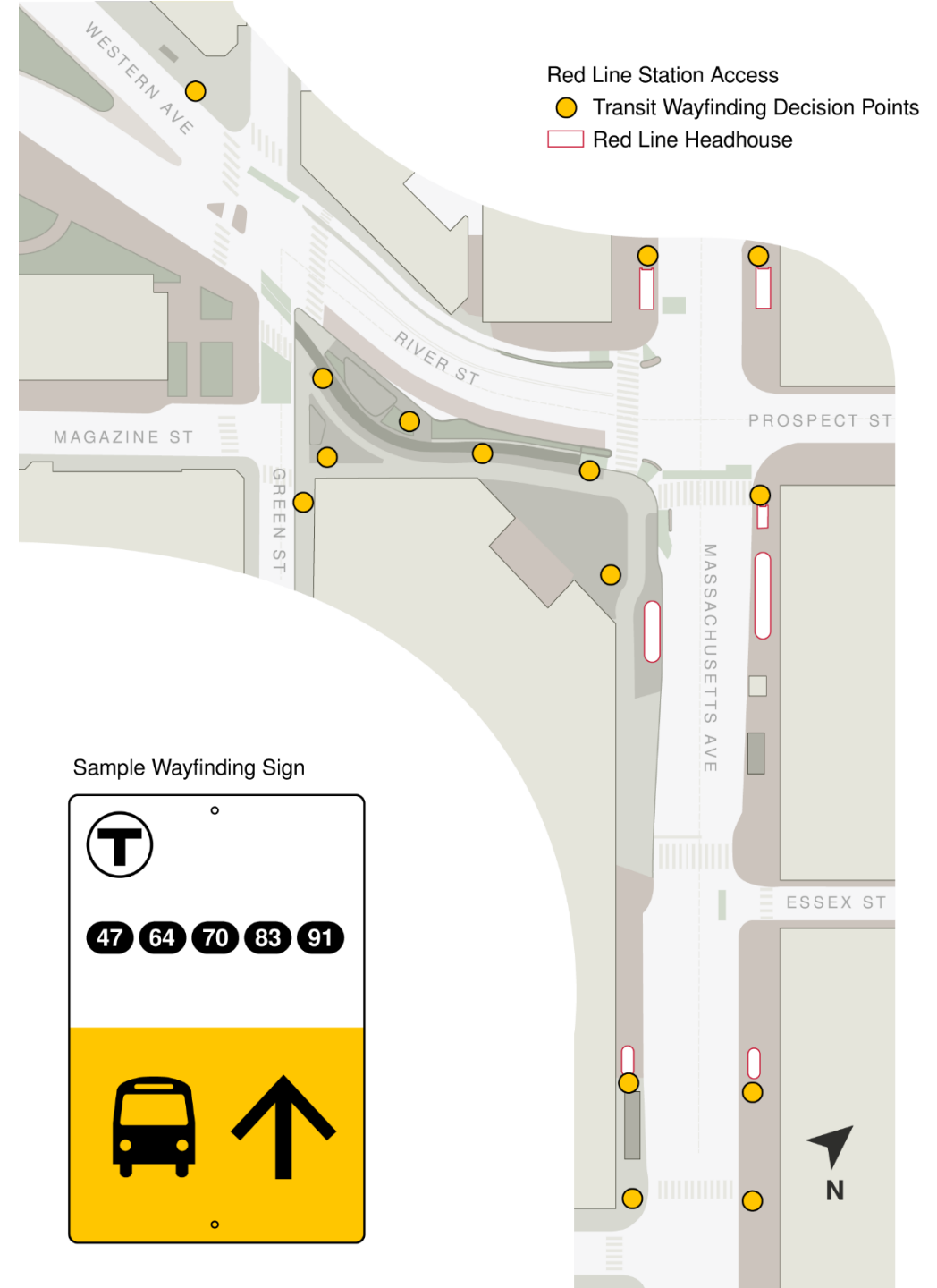


Culture



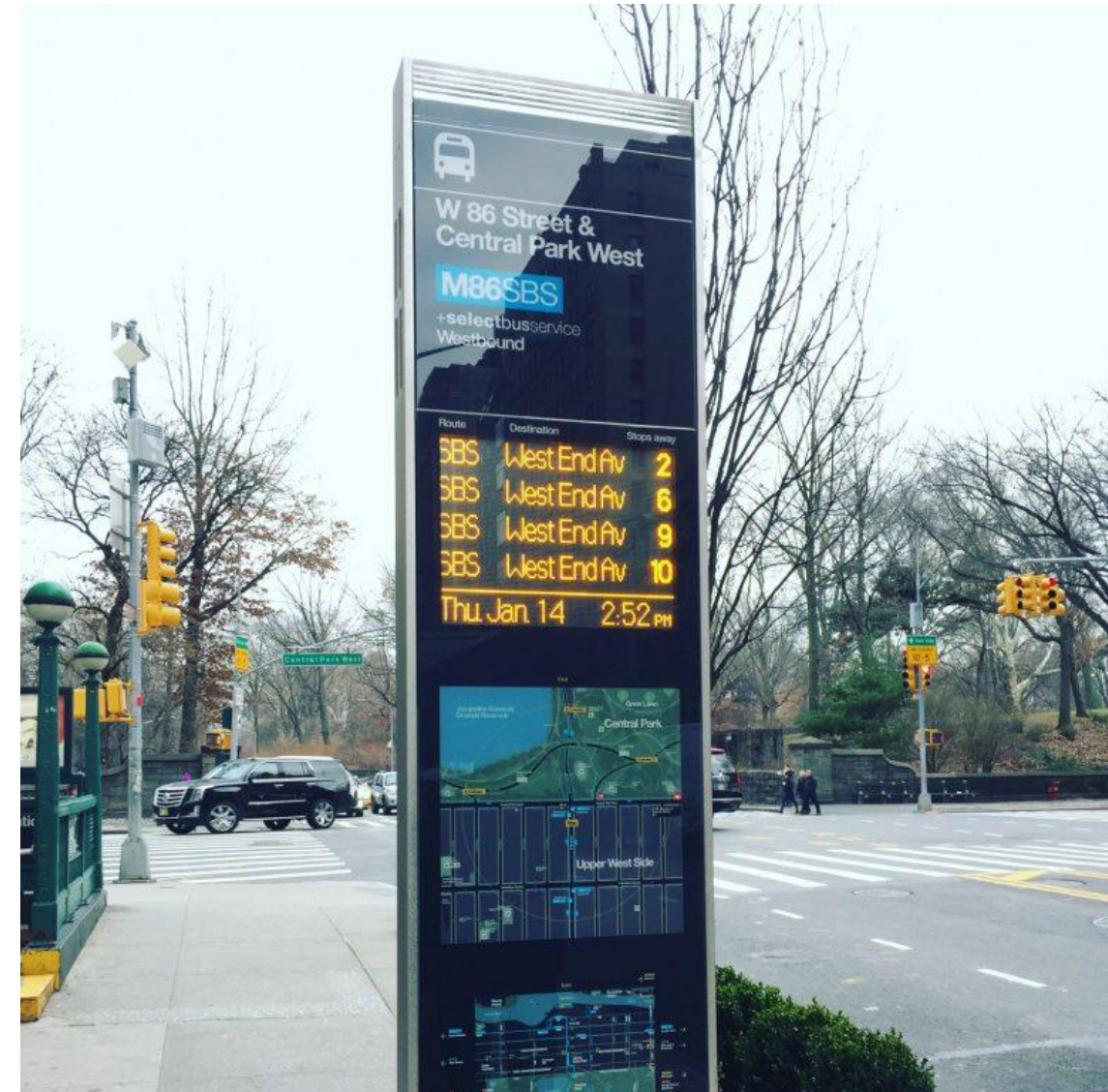
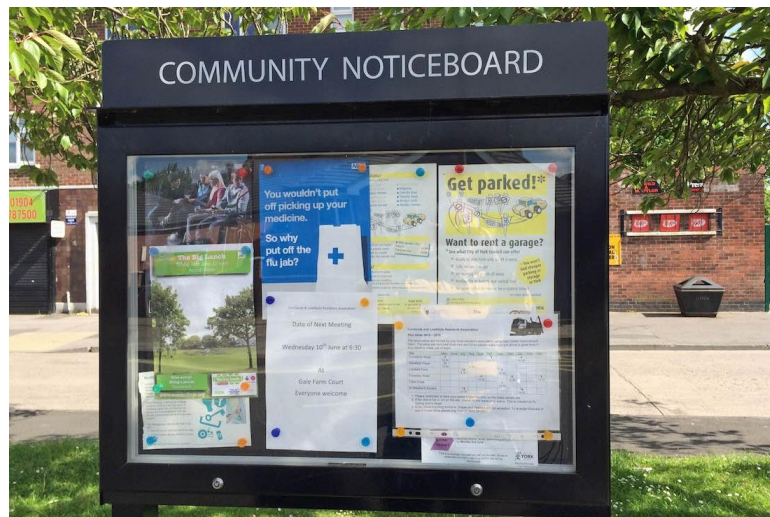
Transit Wayfinding

- Orient people taking buses or the subway to find bus stops and Red Line station entrances
- Work with the MBTA to identify key locations to install transit wayfinding signs
- Broader Central Square wayfinding system done separately



Public Information Kiosk

- Kiosk could display community news and events, cultural destinations, transit and social service information
- Project team is evaluating potential location and feasibility
- Requires continuous programming, operating and maintenance responsibilities



Sculptural Ribbon



Sculptural Ribbon



Sculptural Ribbon



Sculptural Ribbon



Complementary Structures



Complementary Structures



Complementary Structures



Design Summary

- A robust tree canopy
- Repetitive lighting and/or sculptural elements to unify the design
- Richly textured ground plain to enhance plaza unification
- Combination of fixed and flexible furnishings to accommodate event programming
- Simple, elegant bus shelters that complement the overall plaza design
- Captured the spirit and vibrancy of the Central Square community with a bold expression

