

Port Infrastructure Project WORKING GROUP

Meeting #5 | March 18, 2022



CAMBRIDGE
DEPARTMENT
OF PUBLIC
**THE
WORKS**

Welcome!

Remote Participation Instructions

Working Group Members

- Participants may speak and show webcam video
- Use “Raise Hand” button during discussion
- Mute your microphone when others are speaking

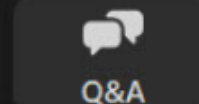
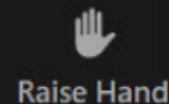
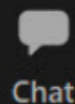
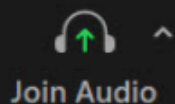
Members of the Public

- Attendees are muted and cannot show video
- Can write questions and ask for assistance in the Q&A window
- Questions can be submitted at any time and will be addressed, as time allows, after working group member discussion, as well as during public comment

Welcome Working Group Members!

As you arrive, please test your mic/video and say hello. Please share verbally or in chat:

What is something either particularly old or new that you love about The Port?



Leave

Meeting Goals

1. Share updates on community engagement approach and upcoming events
2. Share resources with Working Group members to share information and start conversations with neighbors
3. Learn about the history of The Port



Working Group Members

Tabatha Danyow

Kessen Green

Rev. Dr. Ellis Washington

Marian Darlington-Hope

Ming-Tai Huh

Paul Weaver

Troy Ellerbee

Raghu Krishnan

Divya Errabelli

Idony Lisle

Colin Fleming

Jack O'Hearn

Randa Ghattas

James Pierre



Port Infrastructure Project | WORKING GROUP

Meeting #5 | March 18, 2022



Project Team

City of Cambridge

- **Jerry Friedman**
Project Manager/Supervising Engineer
- **Kathy Watkins**
City Engineer/Assistant Commissioner
- **Kate Riley**
Community Relations Manager
- **Gary Chan**
Neighborhood Planner
- **Matt Nelson**
Assistant to the City Manager
- **Lillian Hsu**, Director of Public Art
- **Hilary Zelson**, Public Art Administrator
- **Cambridge Community Corps**



Port Infrastructure Project | WORKING GROUP

Consultant Team

- Kleinfelder, Inc.
- Consensus Building Institute (CBI)

Meeting #5 | March 18, 2022



Agenda

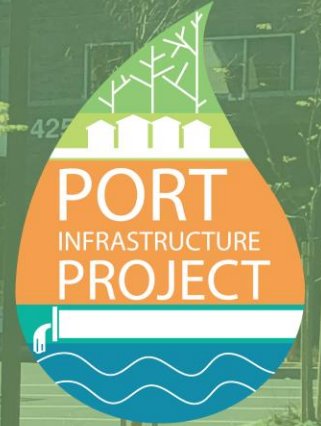
- 9:00 AM Welcome
- 9:10 Project updates
- 9:20 Updates on spring community engagement approach
 - *Resources to support WG member outreach*
- 9:50 Overview of proposed Public Meeting content
- 10:05 History of The Port
- 10:45 Public comment
- 10:50 Upcoming events and next steps
- 11:00 Adjourn

Project Updates

- Exploratory Test Pits – Various Streets – March 21-April 1
- Eversource Gas Main Replacement
 - Columbia Street – continues through April 2022
 - Windsor Street – work in first half of 2023 (tentative)
- Harvard Street (Prospect to Portland)
 - Water main replacement in Summer/Fall 2022 (moved up in schedule to facilitate Eversource Electric work on this street)
 - Eversource Electric work in Fall/Winter 2022/2023
- Clarification of scope questions
 - Changes in street directions (require strong neighborhood consensus)



Community Engagement





Refining our community engagement approach

- Avoid relying on outdoor outreach in winter months
- Emphasize building relationships and inviting partnership on the process before jumping into project updates
 - Meet with community groups to discuss process and substance
- Covid challenges – will ensure multiple modes of engagement, including in-person, virtual, as well as “asynchronous,” i.e., surveys and other opportunities for written comment
- Provide more support to WG members to start conversations and conduct outreach

Upcoming events and next steps

March

Check-in meetings with community groups

virtual public meeting

April-May

Outdoor “Pop-Ups”:
Table discussions to get community feedback on surface infrastructure

Check-in meetings with community groups

Neighborhood Walk to identify issues and opportunities

Community survey

June

Community Event at Clement Morgan Park to build connections and refine design options

September

Community Meeting to provide updates on streets design and discuss parks design options

Working Group Members

Role:

- To help guide project with input
- To serve as liaisons between the community and City
- To help inform neighbors/community of project and opportunities for input



Port Infrastructure Project | WORKING GROUP

Support and materials:

- “Key points” notes/FAQ for you to adapt as you see fit
- Brochures
- Social media flyers to share
- Water bottles, bubbles, etc., to share with folks
- Regular updates by email to share

Questions or requests?

- WG social media channel?

Meeting #5 | March 18, 2022



Overview of Public Meeting (March 31, 2022)



Public Meeting Agenda

- 6PM | Welcome
- 6:05 | Video Presentation (narrated slideshow)
 - *Why We are Here: Flooding in The Port*
 - *Project Overview*
 - *Planning for Street and Sidewalk Improvements*
 - *Examples of Street Design Options*
- 6:25 | Community Input and Q&A
- 7:20 | Next Steps
- 7:30 | Adjourn



Port Infrastructure Project | PUBLIC MEETING

March 31, 2022



Public Meeting Overview

Goals:

1. Share purpose and status of the infrastructure work in The Port neighborhood
2. Outline process moving forward
3. Discuss street design options with community members



Port Infrastructure Project | WORKING GROUP

Content:

- A distillation and **simplification** of content shared with the Working Group over the last year
- Based on WG feedback, using more images to tell the story of “before” and “after” for potential improvements
 - New renderings of street design options
- Preview other engagement opportunities this spring

Meeting #5 | March 18, 2022

CAMBRIDGE
DEPARTMENT
OF PUBLIC
**THE
WORKS**

Public Meeting Format

- Pre-recording of presentation available ahead of time. Will be replayed at beginning of meeting
- Participants have option to watch and submit questions before the meeting
- Webinar-style meeting with Q&A function
- Participants can pose questions at any time in meeting, plus opportunity for verbal questions and discussion



Suffolk Street: Existing Conditions



Tree constrains accessible route

Tree constrains accessible route

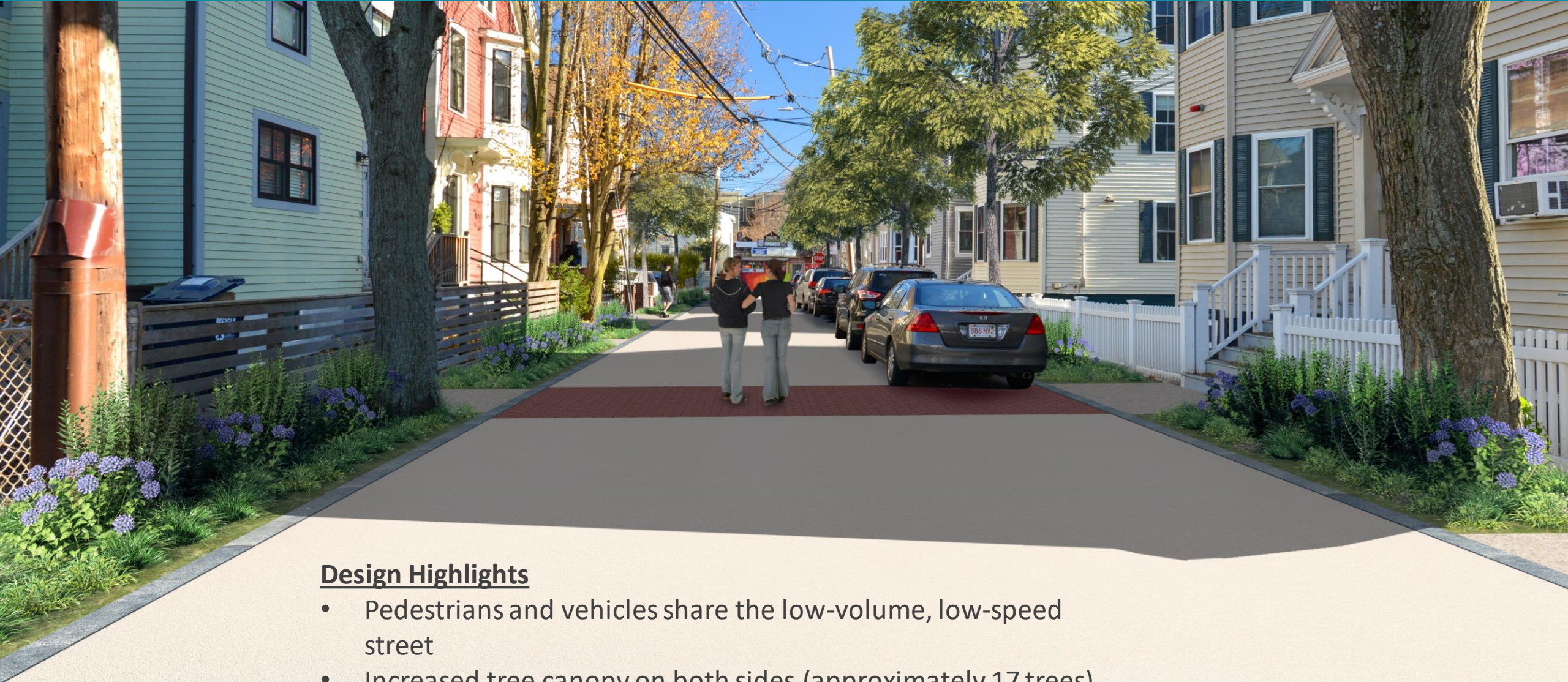
Suffolk Street: Standard Street Design (Example A)



Design Highlights

- Accessible sidewalk on one side
- Increased tree canopy on one side (approximately 4 trees)
- Parking reduced by 2 spaces

Suffolk Street: Shared Street (Example B)



Design Highlights

- Pedestrians and vehicles share the low-volume, low-speed street
- Increased tree canopy on both sides (approximately 17 trees)
- Provides reclamation of sidewalk for green space
- Parking reduced by 7 spaces

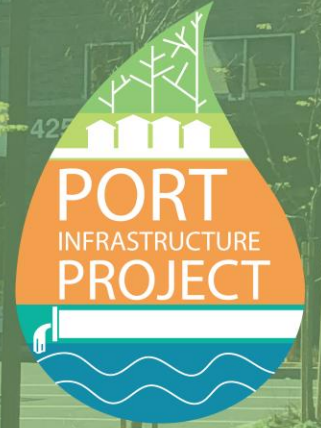
Open-Ended Questions and Opportunity for Preliminary Feedback

- What questions do you have? Want to know more about?
- What did we miss?
 - Other concerns about streets and sidewalks?
- What are you most excited about?
- What are you most concerned about?

... anything else we should ask at this point?



History of The Port



For More Information:
www.cambridgema.gov/theport

Jerry Friedman, Supervising Engineer
jfriedman@cambridgema.gov | 617.349.9720

Kate Riley, Community Relations
kriley@cambridgema.gov | 617.349.4870

**COMMENTS &
QUESTIONS?**

