

# RAFFERTY PARK

RENOVATION PROJECT



**COMMUNITY MEETING #2 - JUNE 11, 2024**

# MEETING OVERVIEW

**5 Minutes**

**Introduction: Team + Process**

**15 Minutes**

**Community Engagement Updates**

**10 Minutes**

**Design Concepts - "The Cube"**

**10 Minutes**

**Design Concepts - "The Wave"**

**40 Minutes**

**Breakout Group Discussions**

**10 Minutes**

**Recap + Next Steps**

# PROJECT TEAM

CITY OF CAMBRIDGE



DESIGN TEAM - PRIME CONSULTANT



DESIGN SUB-CONSULTANTS



PLAYGROUND CONSULTANT

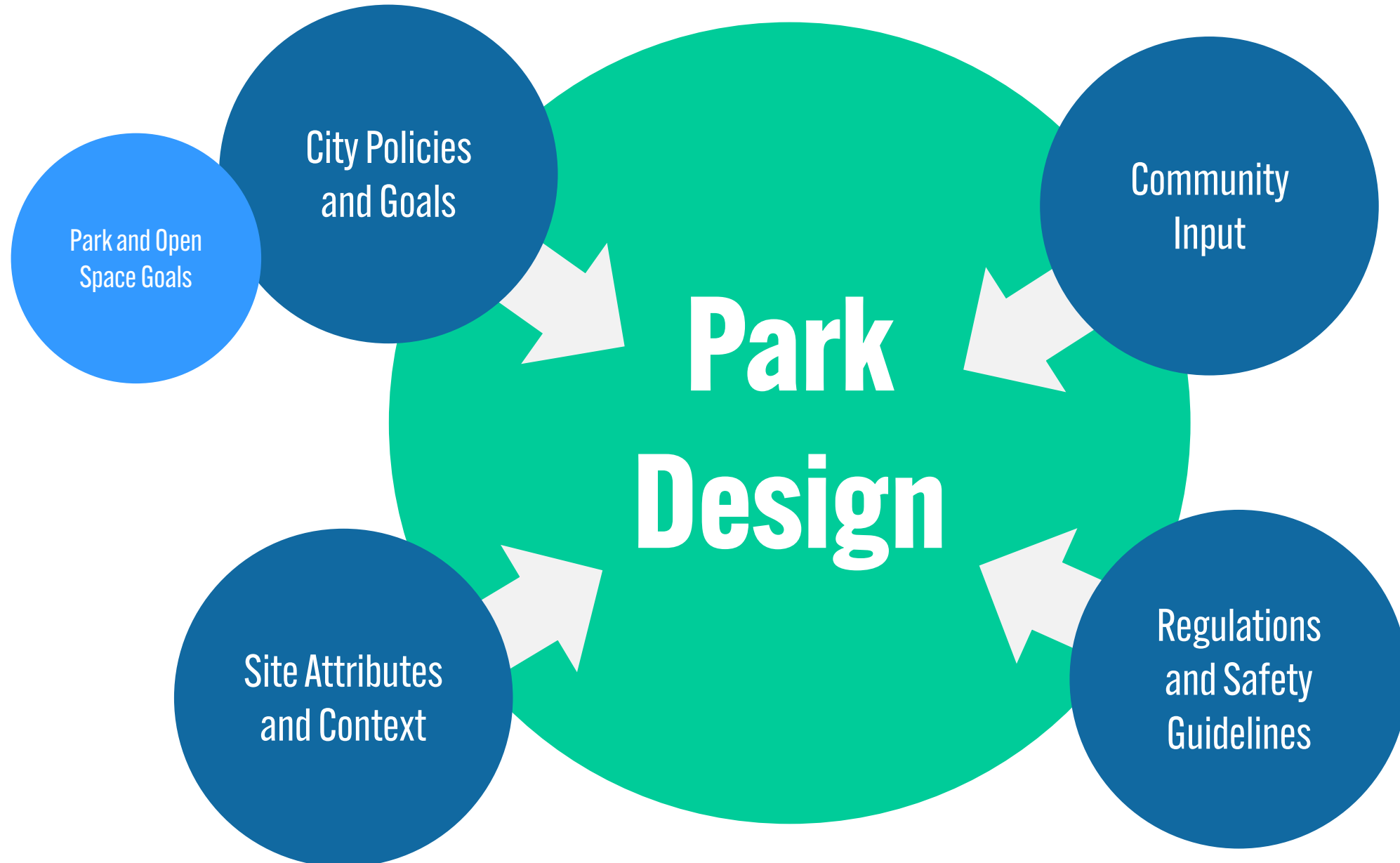


CIVIL ENGINEER

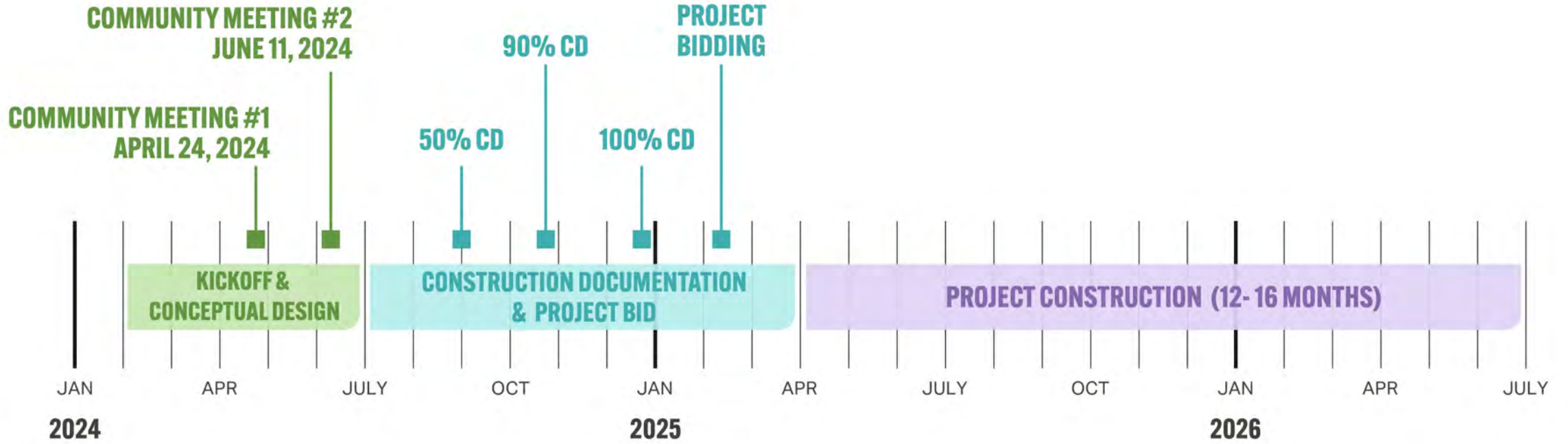


ENGAGEMENT CONSULTANT

# PARK DESIGN PROCESS



# ANTICIPATED PROJECT TIMELINE



## What we'll be focusing on:

Working with you and our team to set a vision and design direction

Figuring out all the details, and developing the technical documents to get the project bid

Getting the project built!

## Let's work together!

Let us know what's important to you, and help us set the direction for what's next!

Let's check in to make sure we get the details right!

Let's keep each other updated: we'll keep you updated on progress, and you should keep us posted about construction impacts. **And let's get ready to celebrate a renovated park!**



# SITE LOCATION





# COMMUNITY ENGAGEMENT: OUTREACH STRATEGY

## What we are doing:

- Community Mailers / Flyers
- Community Meetings
- On-line Surveys
- On-site Tabling and Pop-ups
- Virtual Office Hours
  
- Reach out to us!!



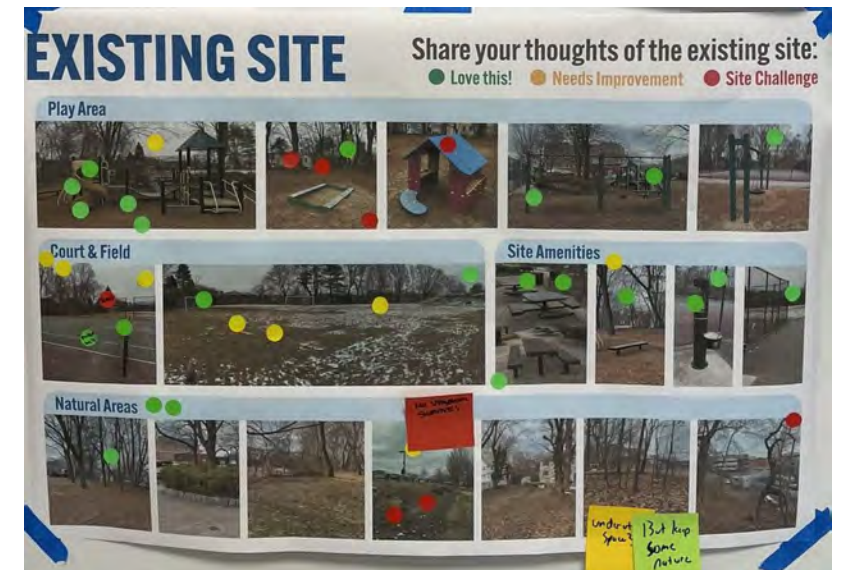
# WHAT WE HEARD ABOUT THE SITE

## What We Asked

- What are your current impressions of Rafferty Park?
- What do you Like and Not Like?
- What would you like to see at Rafferty in the future?

## What You Told Us

- More programming within the fenced boundary.
- Minimal lighting, if any.
- Make the park safe for all.
- Add a gaga pit.
- Tennis court is not often used for tennis.
- Field and hardcourt need improvements.
- Generally, you like the current park but feel it needs a major refresh!





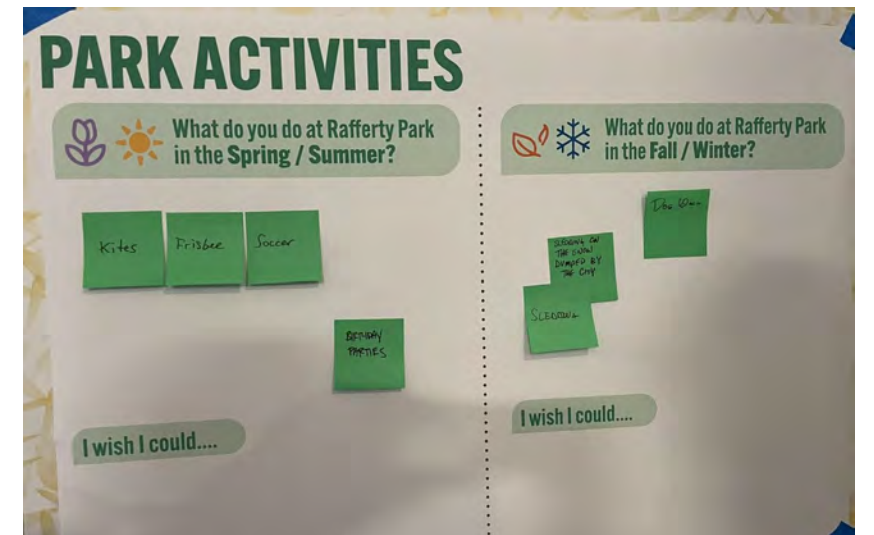
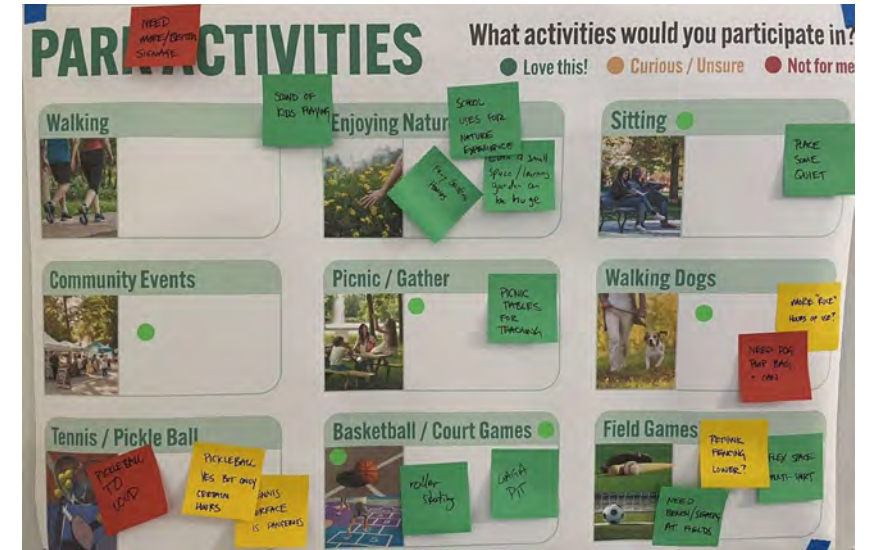
# WHAT WE HEARD ABOUT PARK ACTIVITIES

## What We Asked

- What do you like to do at Rafferty Park today?
- What do you wish you could do at Rafferty Park?

## What You Told Us

- Love the sound of kids playing.
- Wish there were larger tables for group activities.
- Naturalistic setting is valued.
- Appreciate the quiet and secluded feel of the park.
- Add learning/interactive garden spaces.
- Roller skating and a gaga pit would be awesome.
- Need seating options at the field.
- Need poop bags and can for dog waste.
- Provide flex/multi-sport spaces.



# WHAT WE HEARD ABOUT PLAY

## What We Asked

- What are your favorite play elements at the park today?
- What play equipment do you think is missing?
- What types of play experiences would you like to see?

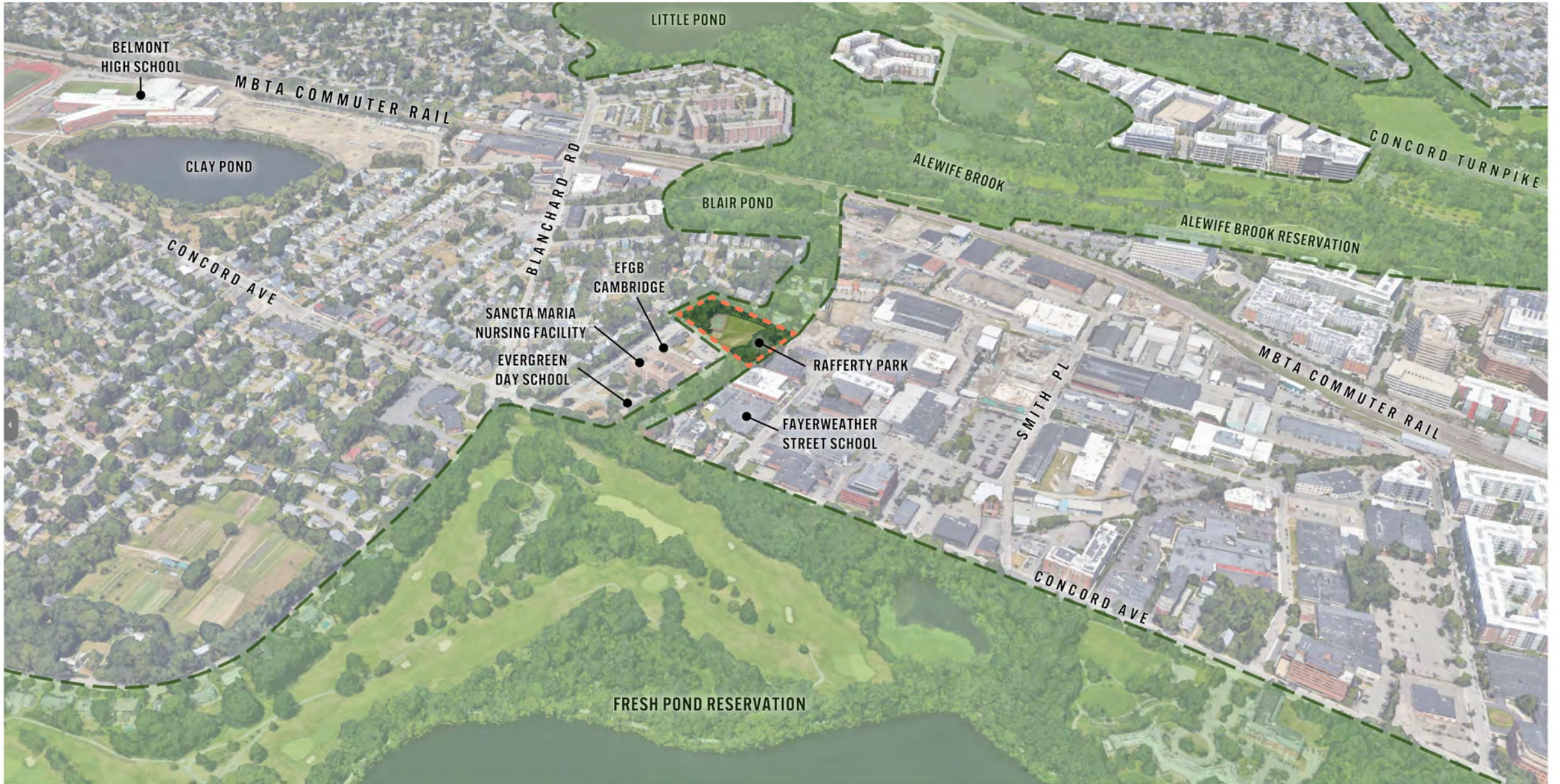
## What You Told Us

- Nature based play paired with sustainability.
- Open ended and themed play.
- Provide play opportunities for a wide range of ages.
- The tire swing is popular.
- Simple is good!
- Provide a water element.
- Integrate and celebrate the existing trees into the play design.
- Provide varying levels of challenges.
- Playground elements should be durable and low maintenance.





# LOCAL CONTEXT - ECOLOGY





# CURRENT USAGE + PROGRAMMING



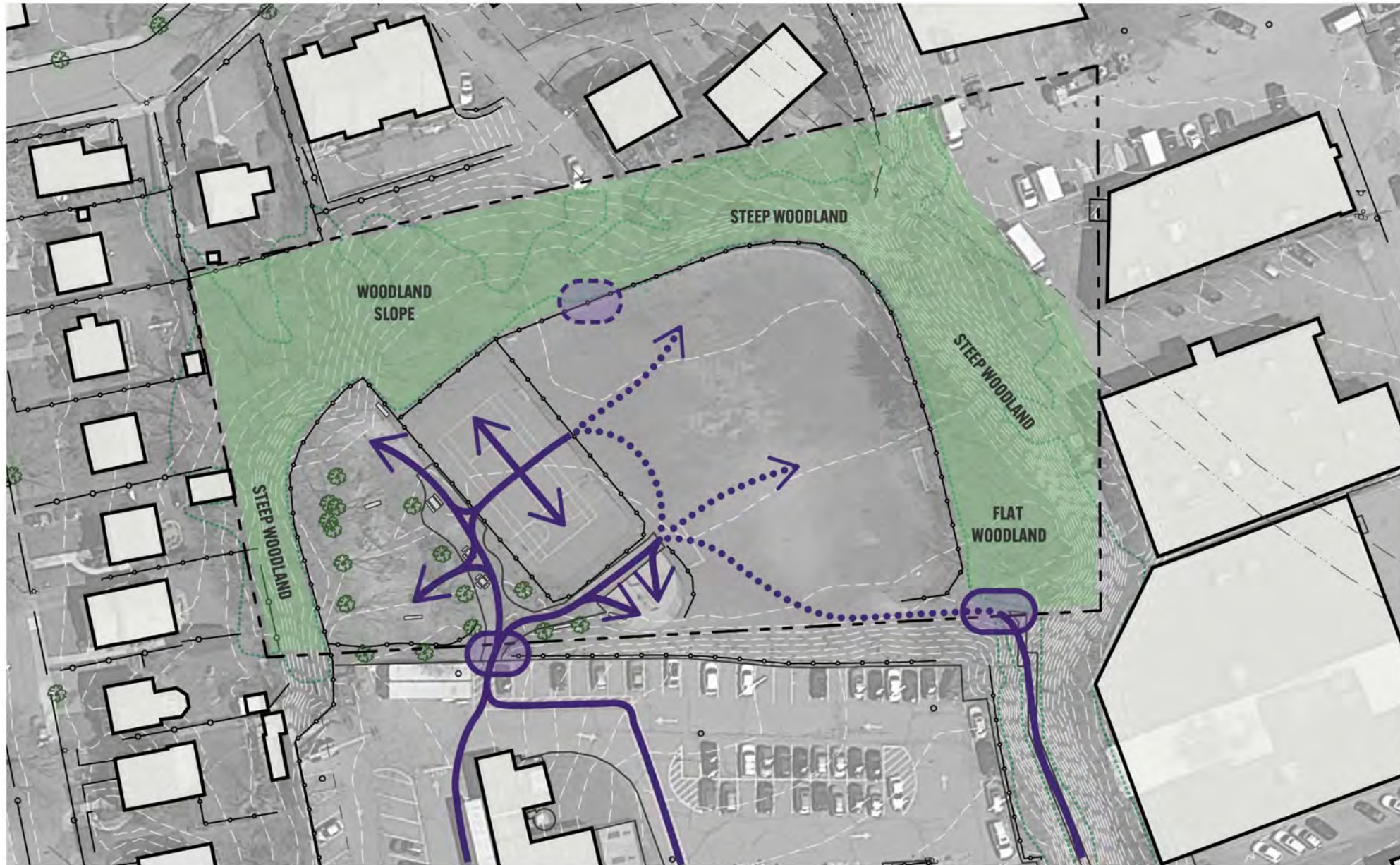
## LEGEND

- PROPERTY LINE
- - - EASEMENT
- 1' ELEVATION CONTOUR
- TREE LINE
- FENCE
- BUILDING
- 🌳 EXISTING TREE
- ⊞ BENCH / PICNIC TABLE
- ⊙ UTILITY POLE
- DRAIN INLET
- ⚡ FIRE HYDRANT
- ⋆ LIGHT FIXTURE
- ▬ USE / PROGRAM AREA
- WOODLAND





# CURRENT CIRCULATION + ACCESS



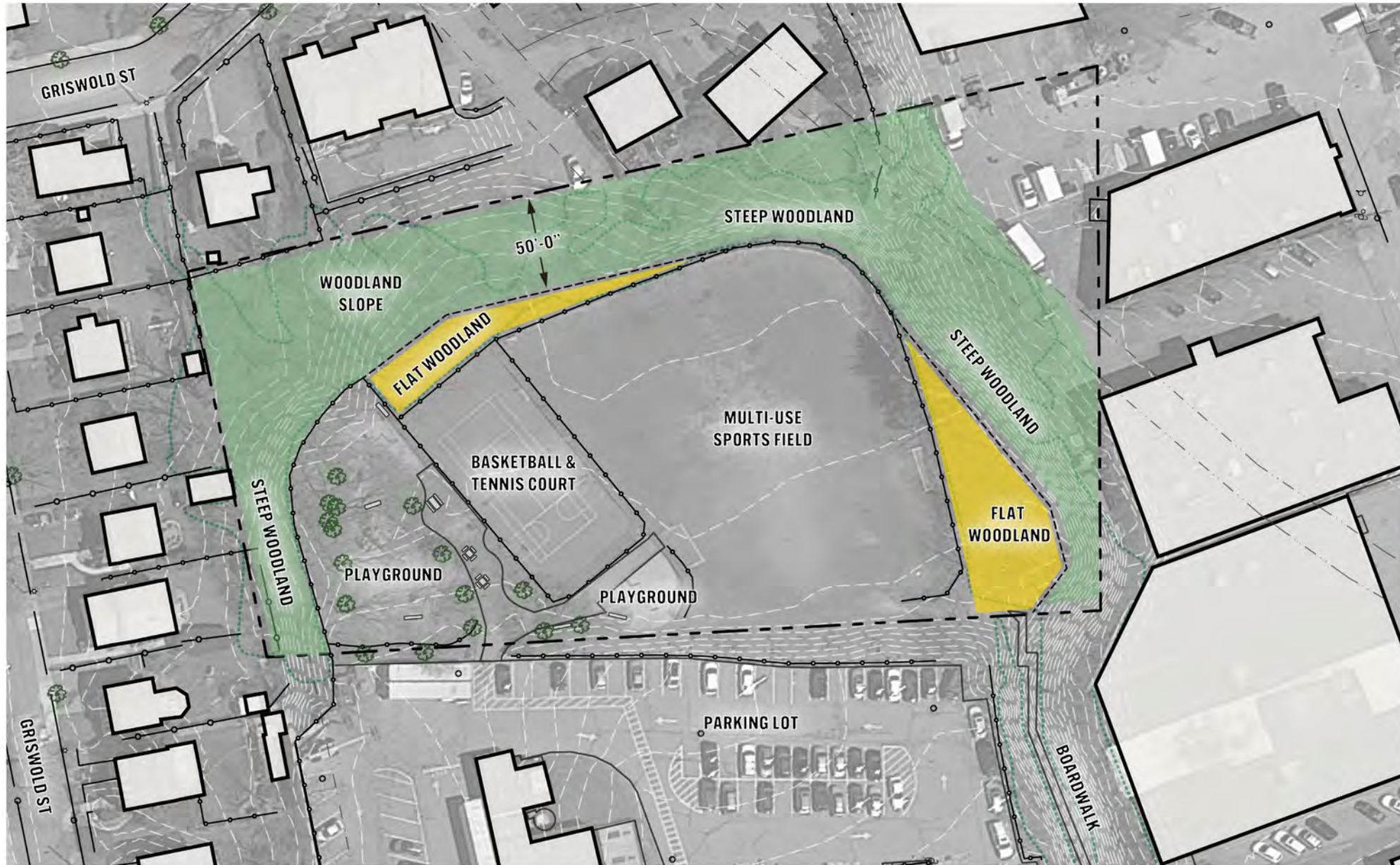
## LEGEND

- PROPERTY LINE
- ... EASEMENT
- 1' ELEVATION CONTOUR
- TREE LINE
- FENCE
- BUILDING
- EXISTING TREE
- BENCH / PICNIC TABLE
- UTILITY POLE
- DRAIN INLET
- △ FIRE HYDRANT
- ★ LIGHT FIXTURE
- EXISTING ENTRYWAY
- INFORMAL ENTRYWAY
- ← CIRCULATION (ADA ACCESSIBLE)
- ⋯ CIRCULATION (NOT ADA ACCESSIBLE)





# ACTIVATING THE WOODLAND



## LEGEND

- PROPERTY LINE
- - - EASEMENT
- 1' ELEVATION CONTOUR
- TREE LINE
- FENCE
- BUILDING
- 🌳 EXISTING TREE
- ⊕ BENCH / PICNIC TABLE
- ⊕ UTILITY POLE
- DRAIN INLET
- ⊕ FIRE HYDRANT
- ⊕ LIGHT FIXTURE
- NEW FENCE LINE
- ACTIVATED WOODLAND





# **GUIDING DESIGN PRINCIPLES**

- **Sustainability**
- **Stormwater management**
- **Urban heat island effect**
- **Climate change**
- **Native plantings**
- **Ecological connections**
- **Future neighborhood development**
- **Current and future usage patterns**
- **Existing canopy preservation**

# THE CUBE



WOODLAND  
BUFFER

WOODLAND  
BUFFER

LAWN

WOODLAND  
PLAY AREA

LANDFORMS  
PLAY AREA

COMMUNAL  
SEATING

FITNESS  
STATION

BOULDER  
FIELD + MISTERS

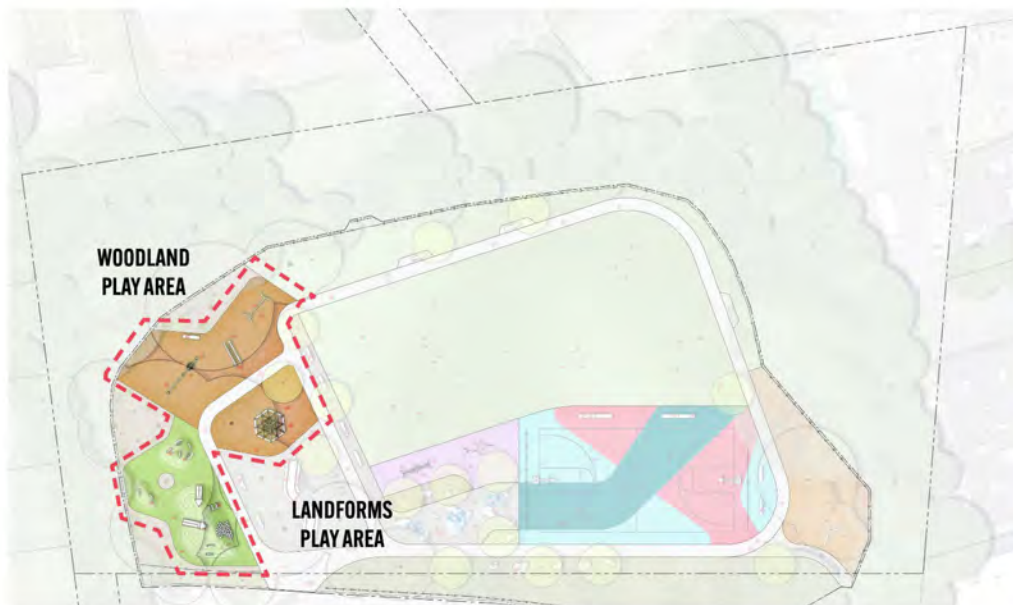
HARDCOURT

WOODLAND  
NOOK

SANCTA MARIA  
PARKING AREA



# THE CUBE - PRIMARY PLAY AREA



## Landforms Play Area

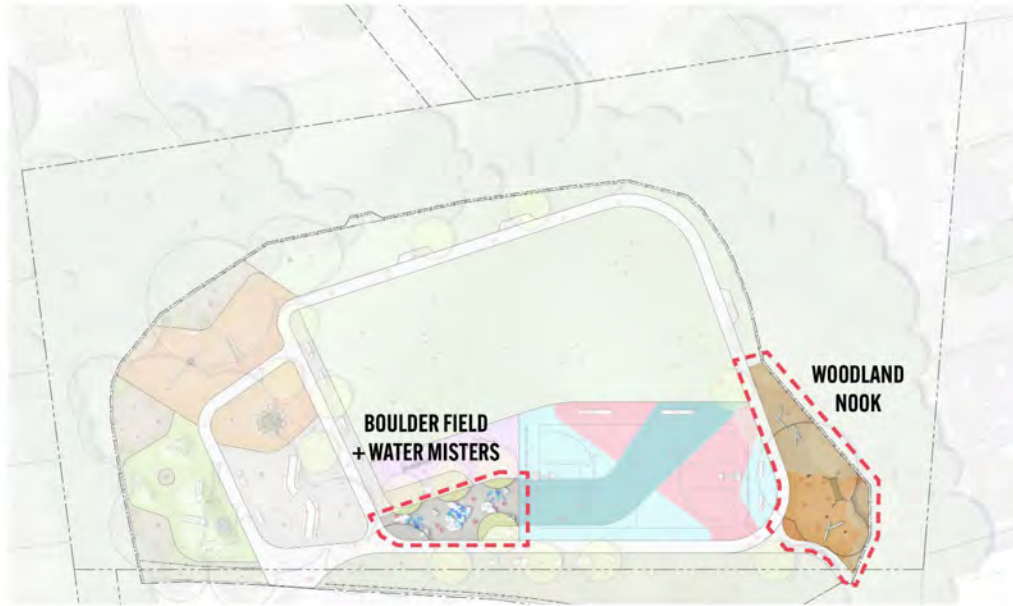


## Woodland Play Area





# THE CUBE - SECONDARY PLAY AREAS



## Water Play

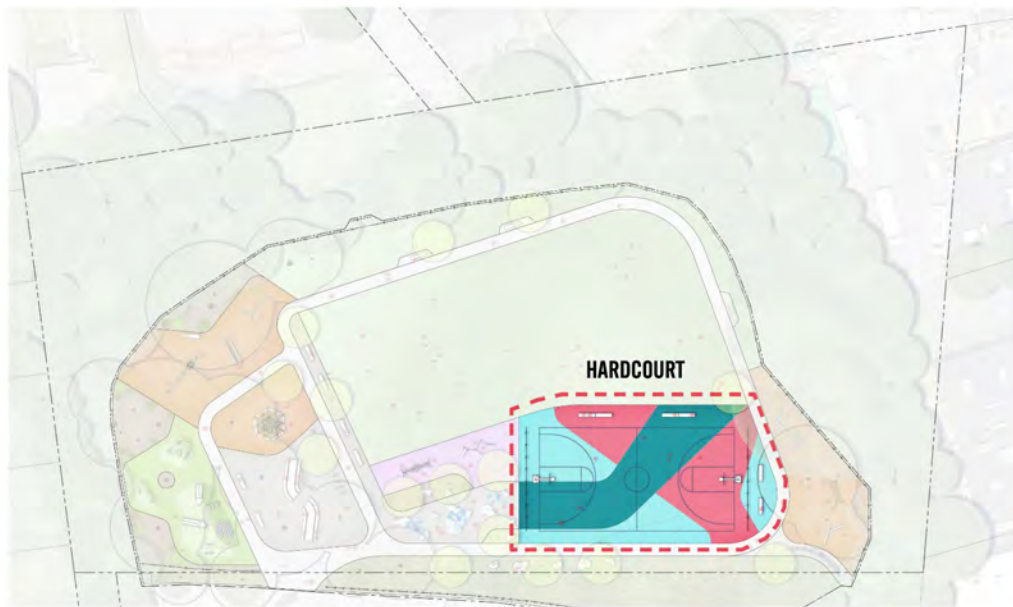


## Woodland Nook





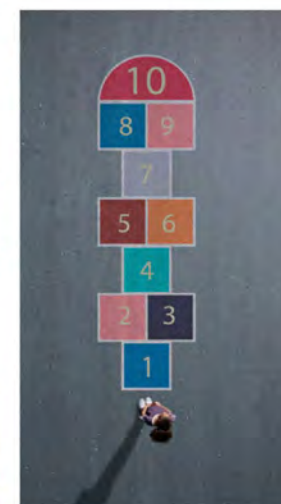
# THE CUBE - HARDCOURT SPORTS + ACTIVITIES



## Hardcourt Activities



## Hardcourt Sports





# THE CUBE - FIELD SPORTS + ACTIVITIES



## Field Sports



## Field Activities



## Fitness Station





# THE CUBE - SITE AMENITIES



## Seating / Lounging



## Large Communal Tables

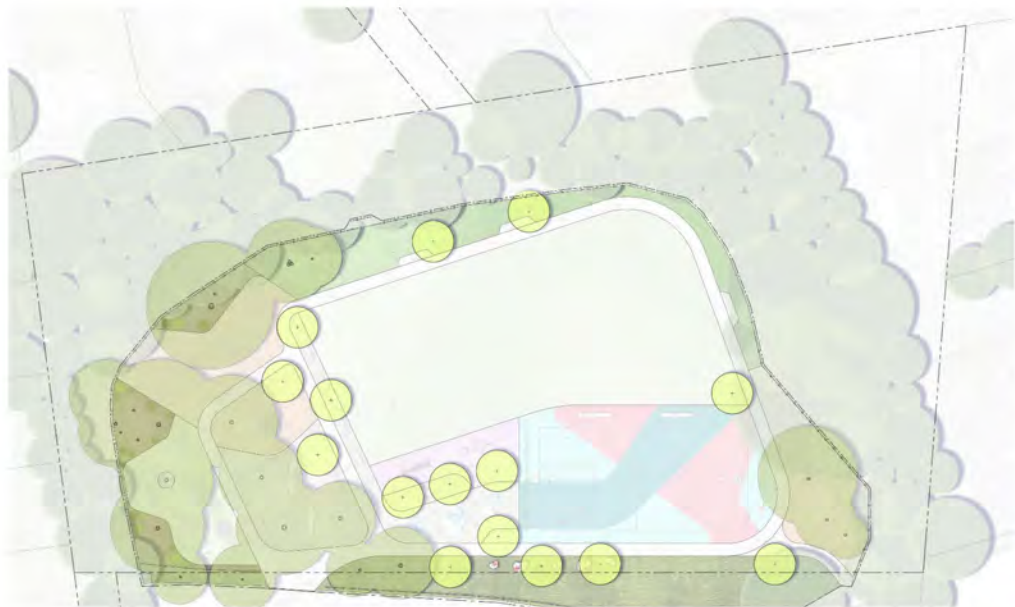


## Bike Racks





# THE CUBE - SITE ECOLOGY



## Active Nature



## Exploration and Sensory Nature



## Planting Character





# THE WAVE



WOODLAND  
BUFFER

WOODLAND  
BUFFER

GAGA

HARD COURT  
& KNOLLS

LAWN

PRIMARY  
PLAY AREA

COMMUNAL  
SEATING

SAND & WATER  
PLAY AREA

LOUNGING AREA

WOODLAND  
NOOK

SANCTA MARIA  
PARKING AREA



# THE WAVE - PRIMARY PLAY AREA



## Sand Play / Water Play



## Primary Play Area





# THE WAVE - SECONDARY PLAY AREA



## Woodland Nook



Kit of Parts / Free Play



Log Steppers / Free Play

## Woodland Nook



Tepee



Tree House / Refuge



Tree House / Refuge



Woodland Deck



# THE WAVE - HARDCOURT SPORTS + ACTIVITIES



## Hardcourt Sports



## Hardcourt Activities





# THE WAVE - FIELD SPORTS + ACTIVITIES



## Field Sports



## Field Activities





# THE WAVE - SITE AMENITIES



## Site Furnishings



## Landscape Seating

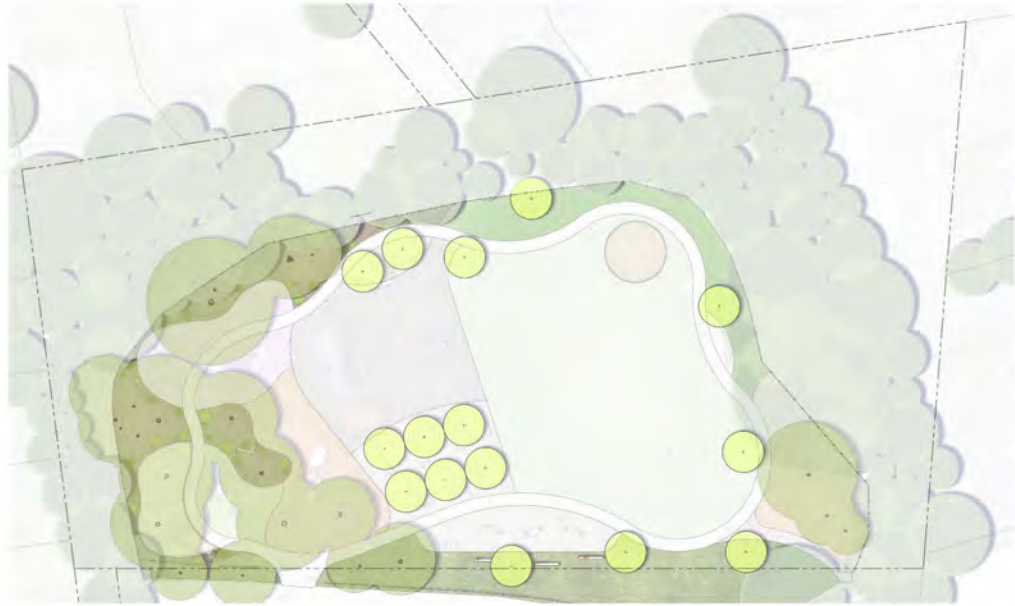


## Lounging and Events





# THE WAVE - SITE ECOLOGY



## Active Nature



## Exploration and Sensory Nature



## Planting Character

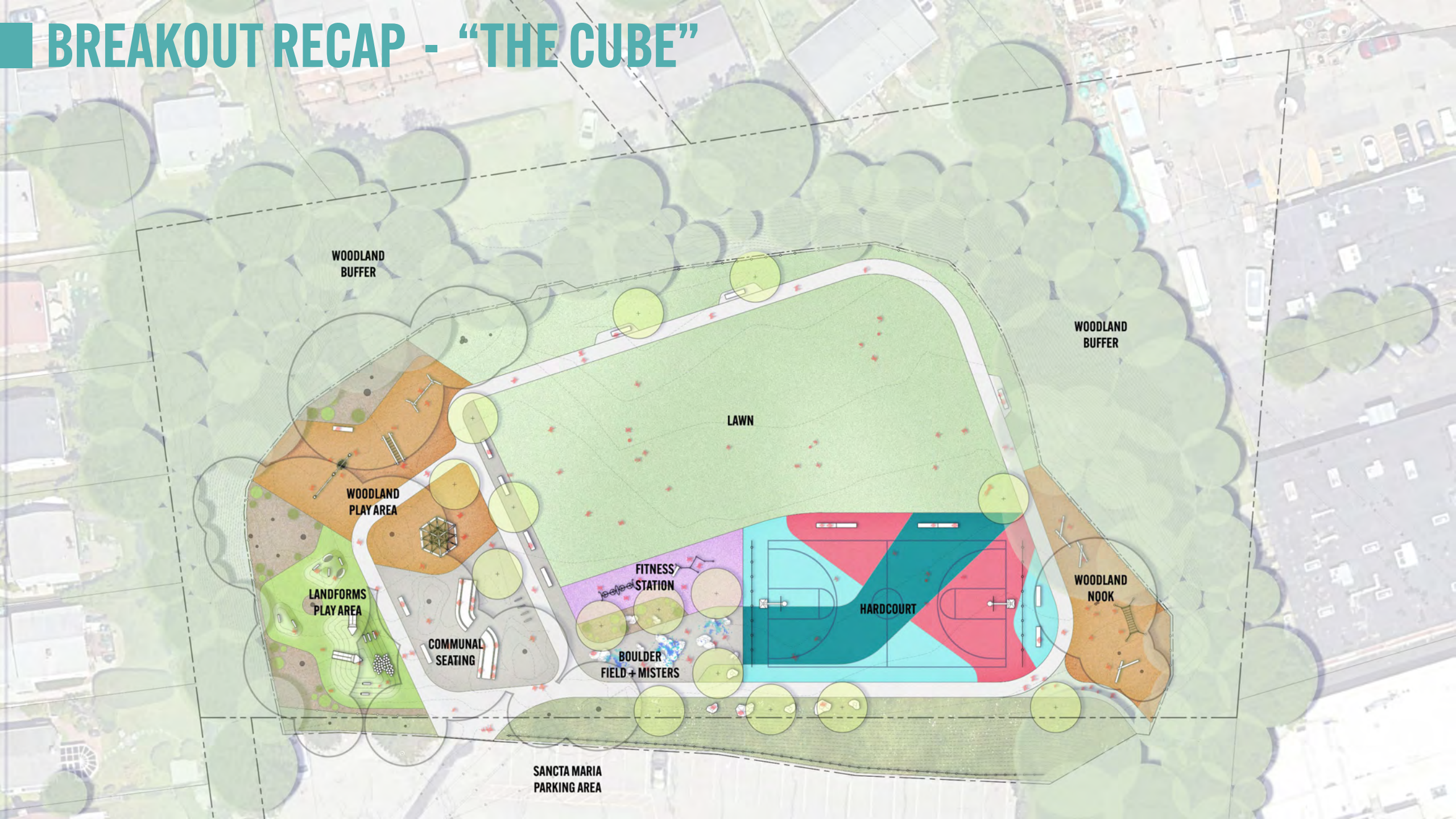




# **BREAKOUT DISCUSSIONS**

**ENVISION A SUCCESSFUL PROJECT - WHAT DOES IT LOOK LIKE?**





# BREAKOUT RECAP - "THE CUBE"

WOODLAND  
BUFFER

WOODLAND  
BUFFER

LAWN

WOODLAND  
PLAY AREA

LANDFORMS  
PLAY AREA

COMMUNAL  
SEATING

FITNESS  
STATION

BOULDER  
FIELD + MISTERS

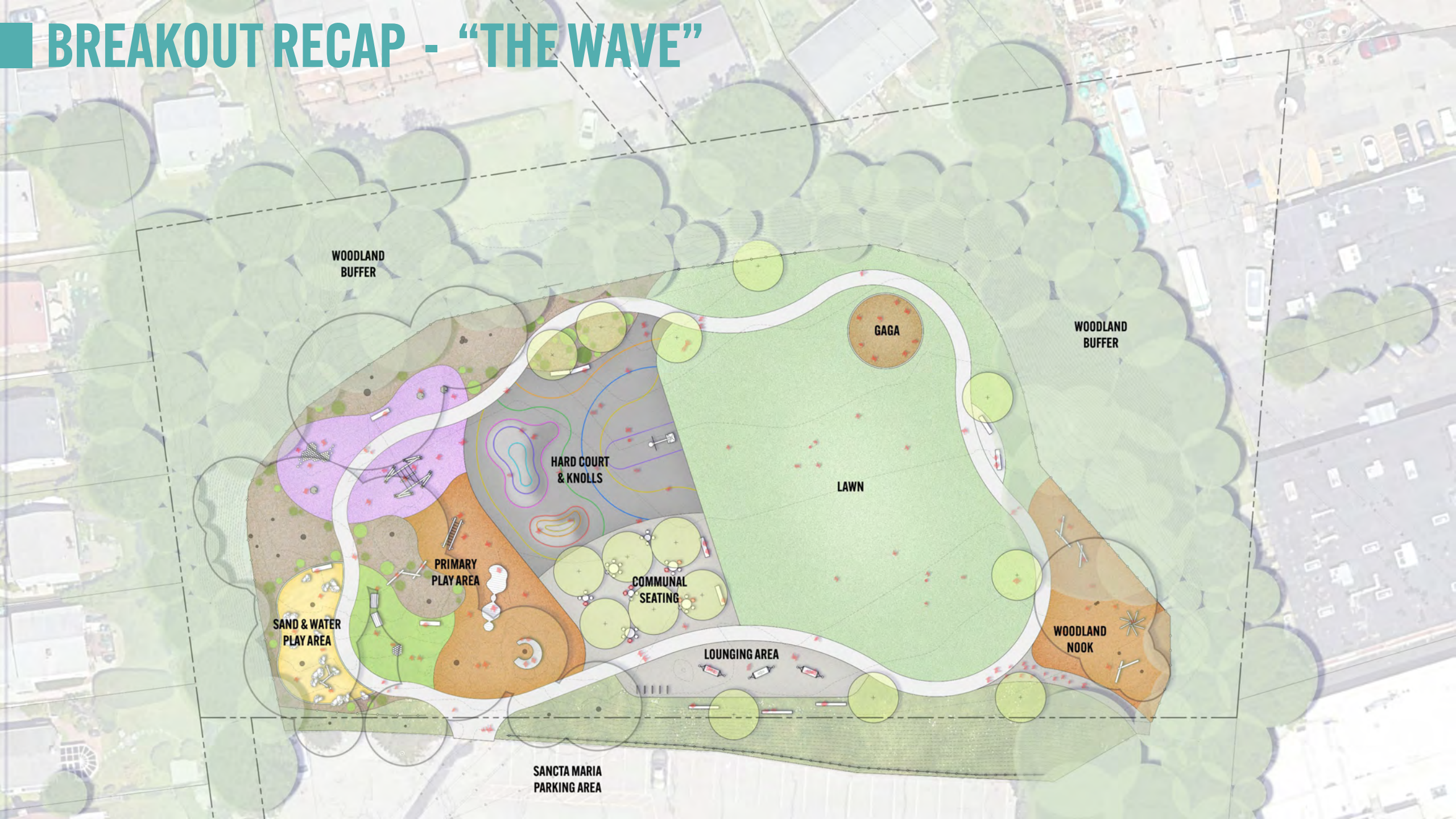
HARDCOURT

WOODLAND  
NOOK

SANCTA MARIA  
PARKING AREA



# BREAKOUT RECAP - "THE WAVE"



WOODLAND  
BUFFER

WOODLAND  
BUFFER

GAGA

HARD COURT  
& KNOLLS

LAWN

PRIMARY  
PLAY AREA

COMMUNAL  
SEATING

SAND & WATER  
PLAY AREA

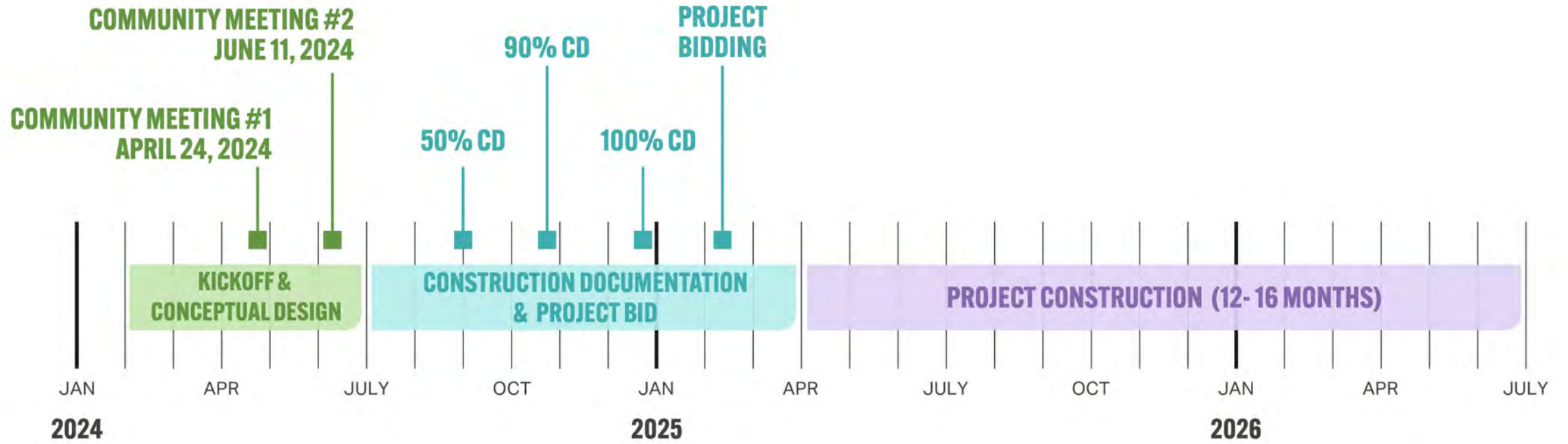
LOUNGING AREA

WOODLAND  
NOOK

SANCTA MARIA  
PARKING AREA



# NEXT STEPS



## What we'll be focusing on:

Working with you and our team to set a vision and design direction

Figuring out all the details, and developing the technical documents to get the project bid

Getting the project built!

## Let's work together!

Let us know what's important to you, and help us set the direction for what's next!

Let's check in to make sure we get the details right!

Let's keep each other updated: we'll keep you updated on progress, and you should keep us posted about construction impacts. **And let's get ready to celebrate a renovated park!**



# ■ NEXT STEPS

## Upcoming Weeks

- Continue to collect feedback re:concepts.
- Public art: seeking 2-3 community members to participate in artist selection process.
- Review feedback, refine concepts, **share out refined concept direction**

## Upcoming Months

- Design development based on refined concept direction.
- Ongoing engagement and coordination.



# ■ NEXT STEPS

## **Project Webpage:**

[camb.ma/raffertyparkproject](http://camb.ma/raffertyparkproject)



## **Project Contact:**

Gary Chan, AICP

Neighborhood Planner

[gchan@cambridgema.gov](mailto:gchan@cambridgema.gov)





**THANK YOU**