

# RAFFERTY PARK

RENOVATION PROJECT



COMMUNITY MEETING #1 - APRIL 24, 2024

# MEETING OVERVIEW

10 Minutes

**Introduction: Team & Process & Goals**

10 Minutes

**Site Overview & Analysis**

Site History

Local Context

Existing Conditions

Current Usage / Programming

Circulation

Ecology / Vegetation

15 Minutes

**Community Engagement Conversation**

45 Minutes

**Breakout Group Activities**

10 Minutes

**Recap & Next Steps**

# PROJECT TEAM

CITY OF CAMBRIDGE



DESIGN TEAM - PRIME CONSULTANT



DESIGN SUB-CONSULTANTS



PLAYGROUND CONSULTANT



CIVIL ENGINEER



ENGAGEMENT CONSULTANT

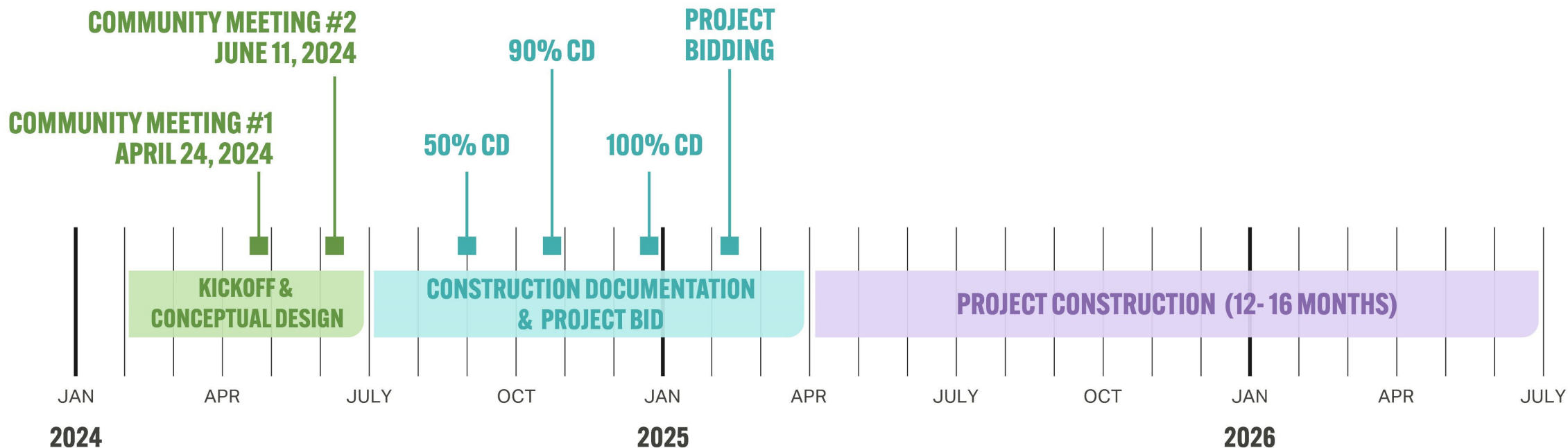


# PROJECT LOCATION





# ANTICIPATED PROJECT TIMELINE



**What we'll be focusing on:**

Working with you and our team to set a vision and design direction

Figuring out all the details, and developing the technical documents to get the project bid

Getting the project built!

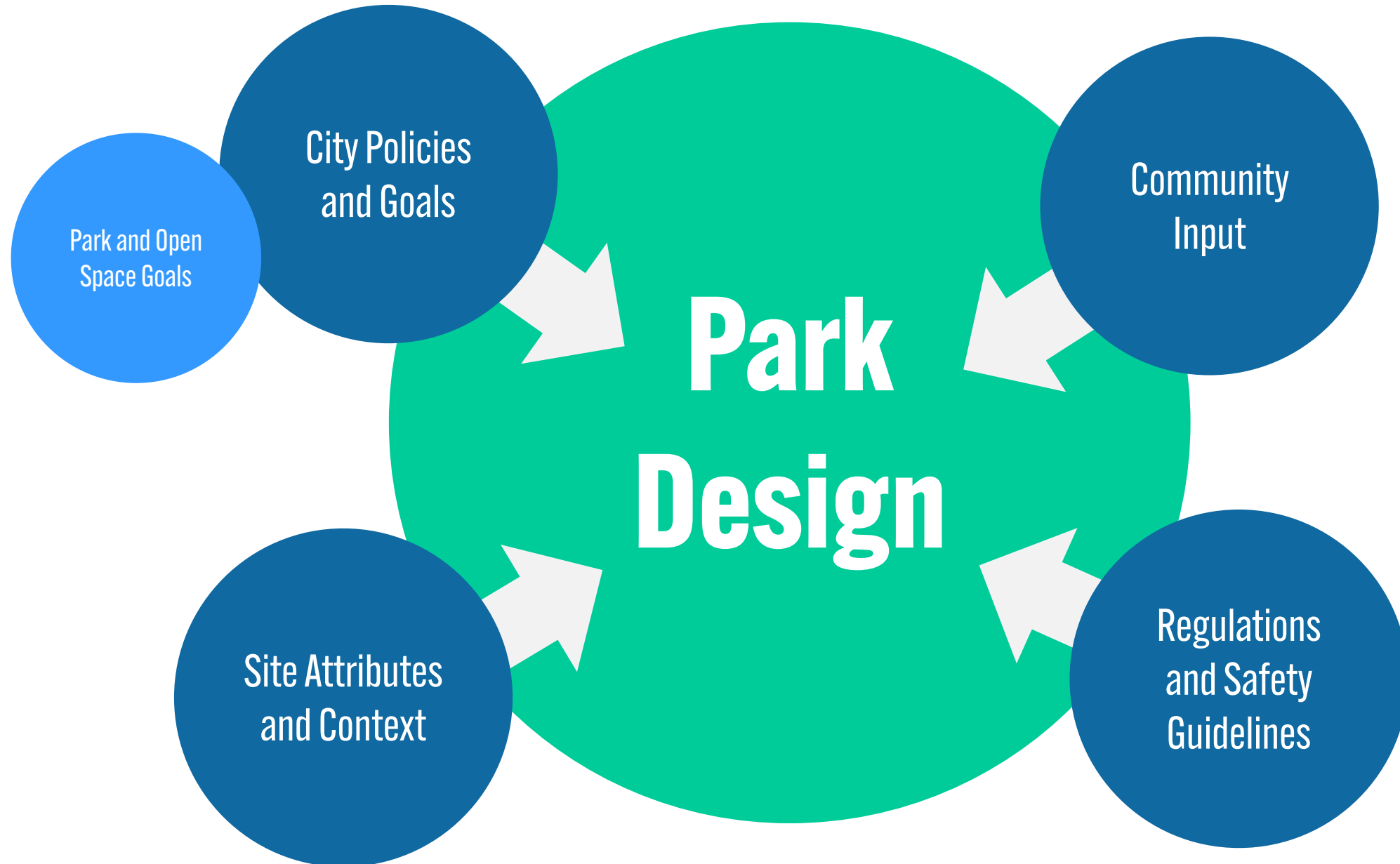
**Let's work together!**

Let us know what's important to you, and help us set the direction for what's next!

Let's check in to make sure we get the details right!

Let's keep each other updated: we'll keep you updated on progress, and you should keep us posted about construction impacts. **And let's get ready to celebrate a renovated park!**

# PARK DESIGN PROCESS





# WHAT WE HAVE HEARD!

## What Works Well

- The variety of park activities
- Shade
- Size and location

## What Would Improve the Experience

- Improved field
- Court repairs
- Updated/age-expansive play

## What We Need to Study

- Access and Awareness



# PARKS AND OPEN SPACE GOALS

## Expand & Enhance Park Access for All

- *Make parks and park programs welcoming for all.*
- *Improve access to open space, with an emphasis in areas of high open space need.*
- *Make it easier for people to get to and travel through our parks and open spaces in ways that are active and sustainable.*



Consider access and awareness of the park, and what that looks like in light of future changes in the Alewife Quadrangle area.

*What barriers (known and unknown) exist to the park being a welcoming space? How can we address those through design?*



# PARKS AND OPEN SPACE GOALS

## Provide Environmental Benefits in our Urban Context

- *Protect and enhance natural areas.*
- *Use our parks and open spaces to make Cambridge more resilient to climate change.*

The site's existing tree canopy is a design asset, both for its intrinsic value, but also because of what it provides functionally (shade).

*How else can we leverage the park to support ecology and climate resilience?*



# PARKS AND OPEN SPACE GOALS

## Activate & Enhance Spaces

- Promote healthy play and active recreation for people of all ages, abilities, genders, and backgrounds.
- Increase active and passive activity in public spaces.
- Make comfortable spaces where people can gather and connect.
- Bring creativity, arts, and culture to parks and public spaces.

The park's mix of uses is one of the things that is greatly appreciated about the park.

How can we retain, and even amplify, the comfort of the space and how well it serves park visitors? How do we support its role as a center of neighborhood life?





# PARKS AND OPEN SPACE GOALS

## Enhance & Improve Design, Operations, and Management

- *Build high-quality parks that embody our community's priorities and wide range of interests.*
- *Aim to keep parks clean and keep equipment in working order.*
- *Improve how we share information about parks and open spaces. Highlight opportunities for learning and community building.*



This renovation will address the physical condition of the park and aim to build a park that stands up to the level of use the park enjoys.

How do we ensure the park stands up to the level of use it gets? What can we do through design, and how can we make it easier to support the park? How can the park be an avenue for community involvement?

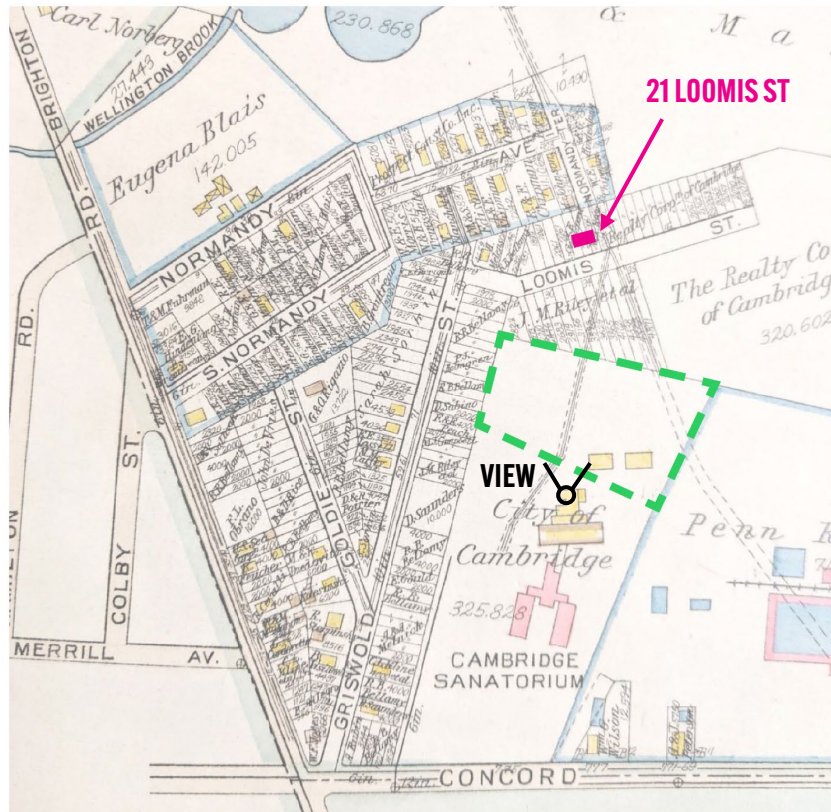


# SITE OVERVIEW & ANALYSIS

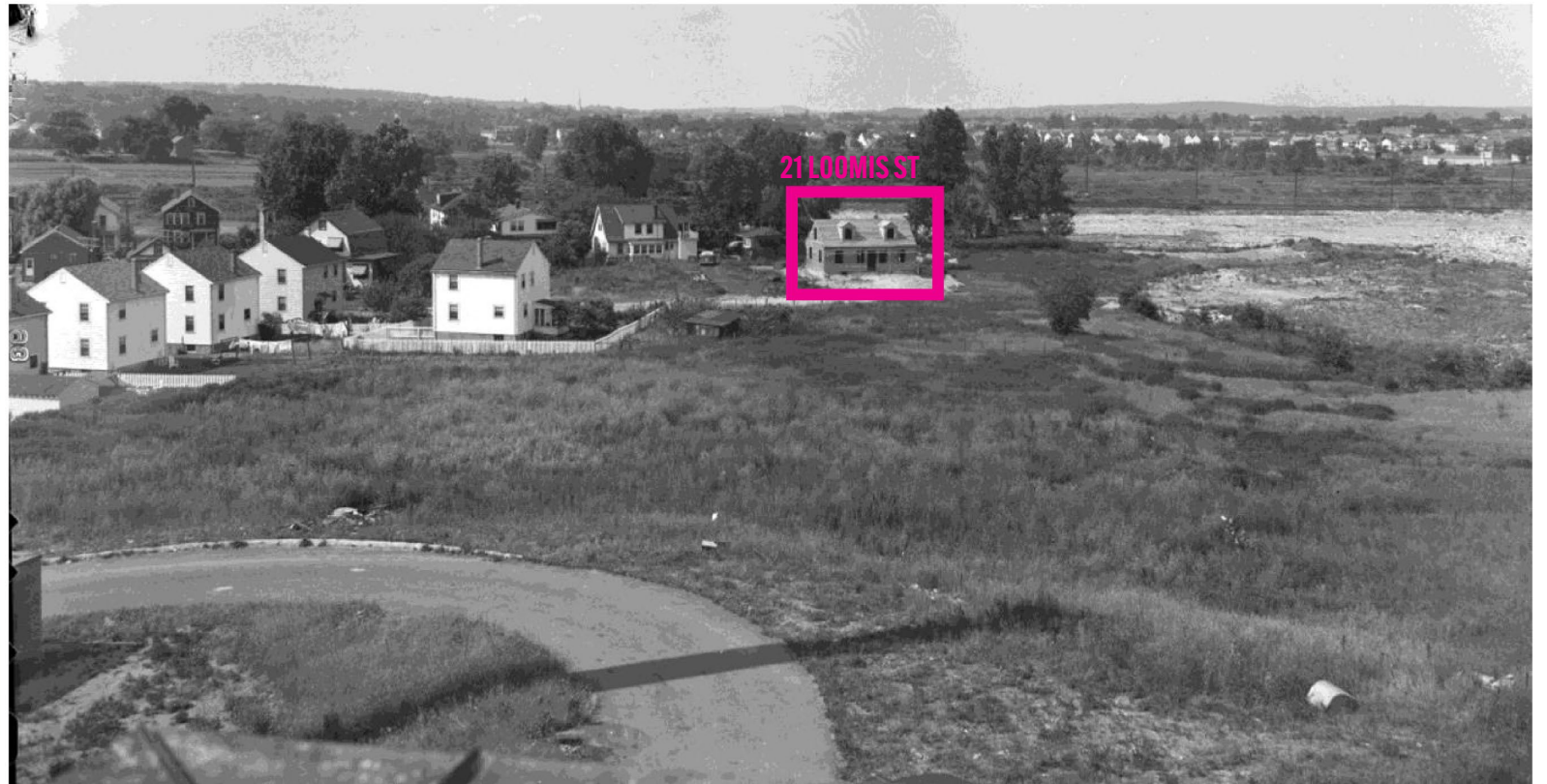




# SITE HISTORY



1930 - CAMBRIDGE HIGHLANDS MAP  
( SITE MARKED FOR REFERENCE )



1949 - RAFFERTY PARK SITE  
( 21 LOOMIS ST MARKED FOR REFERENCE )



# LOCAL CONTEXT



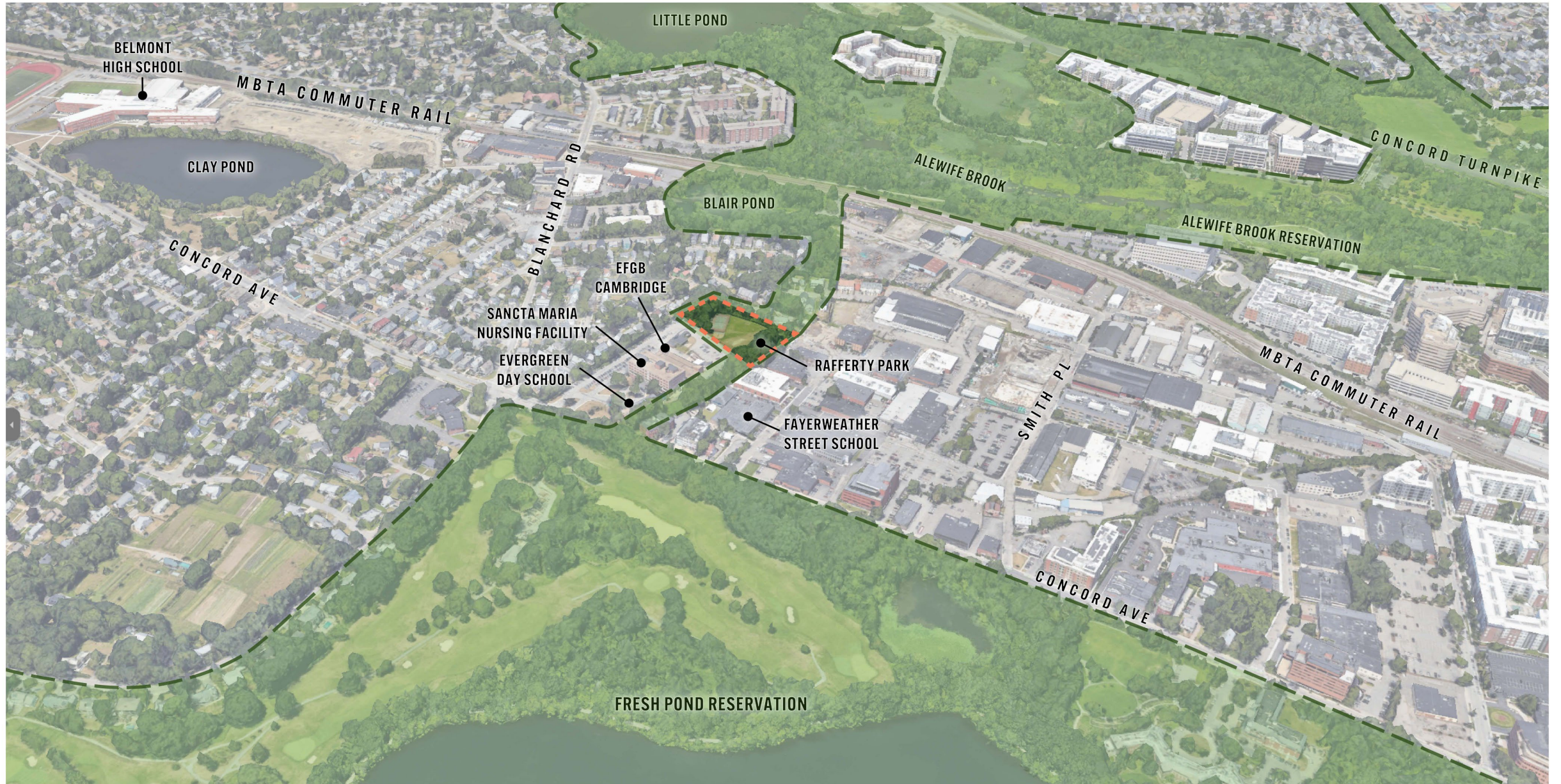


# LOCAL CONTEXT - SITE



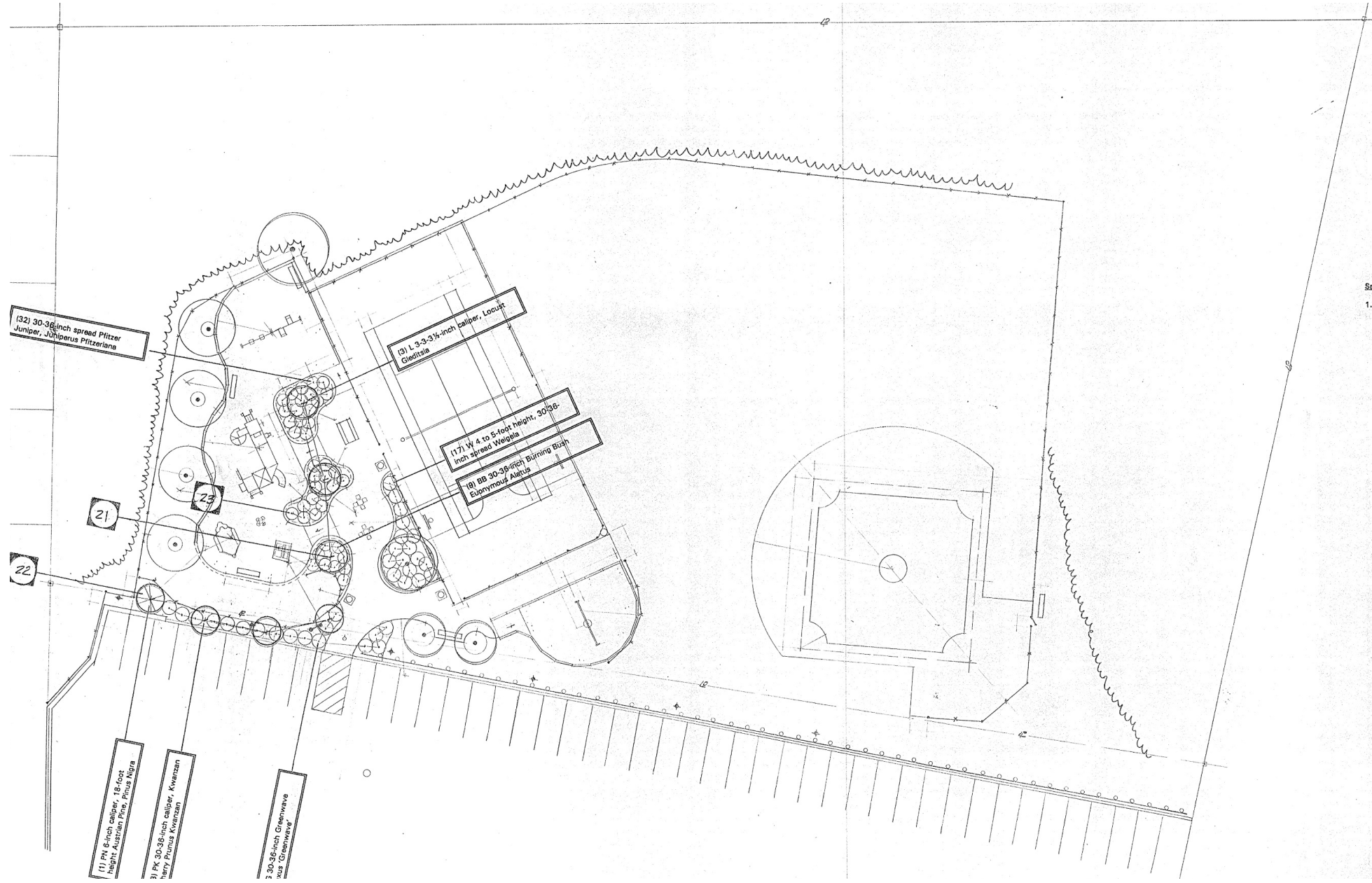


# LOCAL CONTEXT - ECOLOGY





# EXISTING CONDITIONS - 1994 DESIGN





# EXISTING CONDITIONS



## LEGEND

- PROPERTY LINE
- - - EASEMENT
- - - 1' ELEVATION CONTOUR
- TREE LINE
- FENCE
- BUILDING
- 🌳 EXISTING TREE
- ⊞ BENCH / PICNIC TABLE
- ⊝ UTILITY POLE
- DRAIN INLET
- ⚡ FIRE HYDRANT
- ☆ LIGHT FIXTURE





# CURRENT USAGE + PROGRAMMING



## LEGEND

- PROPERTY LINE
- - - EASEMENT
- - - 1' ELEVATION CONTOUR
- TREE LINE
- FENCE
- BUILDING
- 🌳 EXISTING TREE
- ⊞ BENCH / PICNIC TABLE
- ⊗ UTILITY POLE
- DRAIN INLET
- ⚡ FIRE HYDRANT
- ★ LIGHT FIXTURE
- USE / PROGRAM AREA
- WOODLAND





# EXISTING CONDITIONS - PLAY



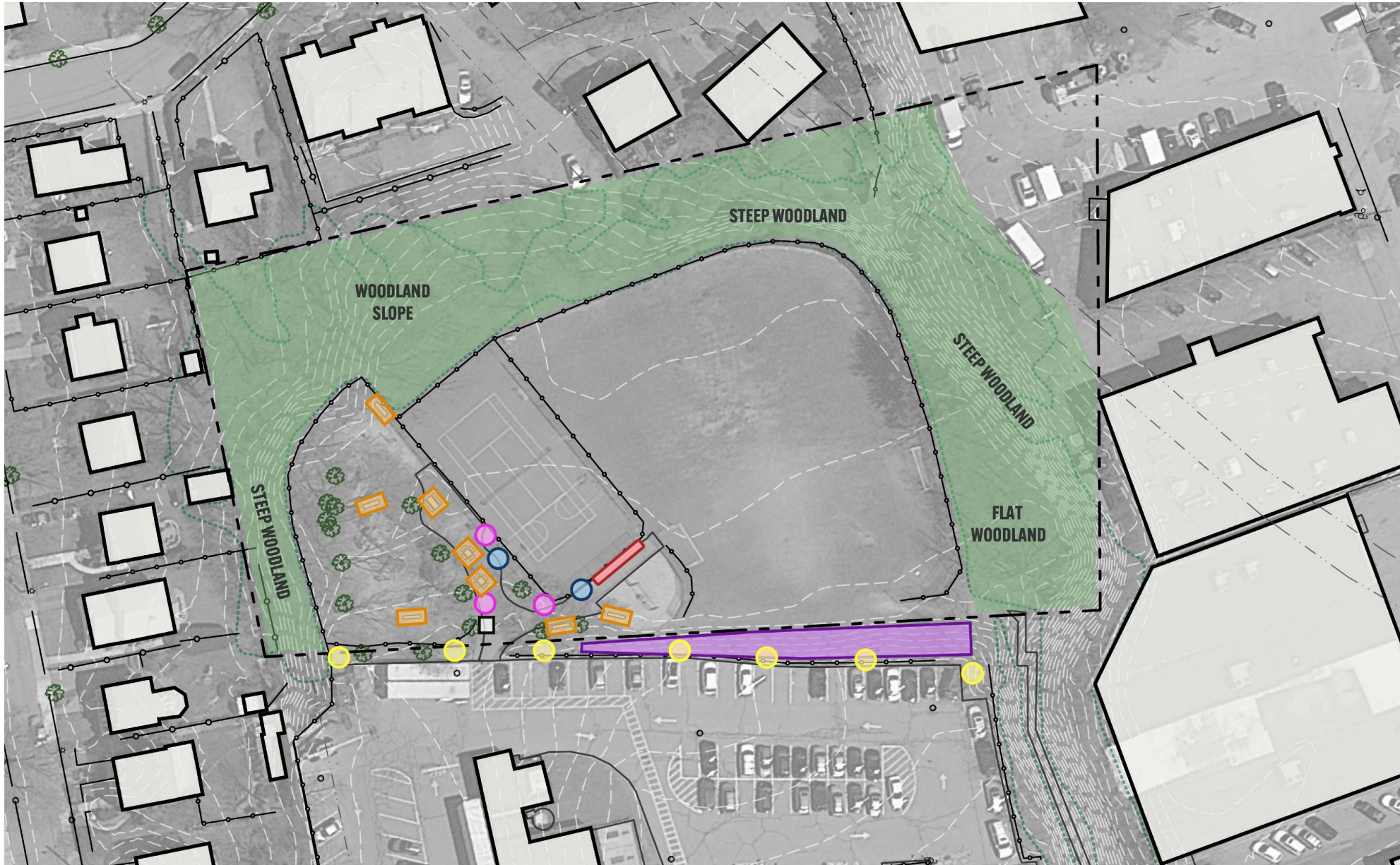


# EXISTING CONDITIONS - SITE





# EXISTING CONDITIONS - SITE FEATURES



## LEGEND

- PROPERTY LINE
- - - EASEMENT
- - - 1' ELEVATION CONTOUR
- TREE LINE
- FENCE
- BUILDING
- 🌳 EXISTING TREE
- ☒ BENCH / PICNIC TABLE
- ⚡ UTILITY POLE
- DRAIN INLET
- ⚡ FIRE HYDRANT
- ★ LIGHT FIXTURE
- LIGHTING FIXTURE
- DRINKING FOUNTAIN
- TRASH RECEPTACLE
- ▭ SEATING
- ▭ BIKE RACKS (3 TOTAL)
- TRANSFORMER
- ▭ SNOW STORAGE AREA
- WOODLAND





# CIRCULATION



## LEGEND

- PROPERTY LINE
- - - EASEMENT
- - - 1' ELEVATION CONTOUR
- TREE LINE
- FENCE
- BUILDING
- 🌳 EXISTING TREE
- ⊞ BENCH / PICNIC TABLE
- ⊕ UTILITY POLE
- DRAIN INLET
- ⚡ FIRE HYDRANT
- ★ LIGHT FIXTURE
- ▭ EXISTING ENTRYWAY
- - - INFORMAL ENTRYWAY
- ➔ CIRCULATION (ADA ACCESSIBLE)
- ⋯➔ CIRCULATION (NOT ADA ACCESSIBLE)





# ECOLOGY & VEGETATION



## LEGEND

- PROPERTY LINE
- - - EASEMENT
- - - 1' ELEVATION CONTOUR
- TREE LINE
- FENCE
- BUILDING
- 🌳 EXISTING TREE
- ⊞ BENCH / PICNIC TABLE
- ⊕ UTILITY POLE
- ⊙ DRAIN INLET
- ⊖ FIRE HYDRANT
- ★ LIGHT FIXTURE
- LAWN
- PLANTED SLOPE
- WOODLAND
- STEEP WOODLAND
- CANOPY TREES
- NATIVE CANOPY
- RED MAPLE
- CRAB APPLE
- BRADFORD PEAR
- HONEY LOCUST





# COMMUNITY ENGAGEMENT

- 1. Purpose and Objectives**
- 2. Stakeholder Analysis**
- 3. Engagement Methods and Tools**
- 4. Engagement Plan and Timeline**
- 5. Evaluation and Reporting**
- 6. Continuous Listening and Learning**



# COMMUNITY ENGAGEMENT





**WHY?**

**A PERSON WHO KNOWS THEIR WHY  
CAN SOLVE ALMOST ANY HOW!**



# HOW?

**THE MIRACLE QUESTION: HOW WILL WE KNOW  
OUR PROJECT HAS SUCCEEDED?**



# GROUP ACTIVITIES

**STATION #1: EXISTING CONDITIONS**

**STATION #2: PARK ACTIVITIES**

**STATION #3: TYPES OF PLAY**

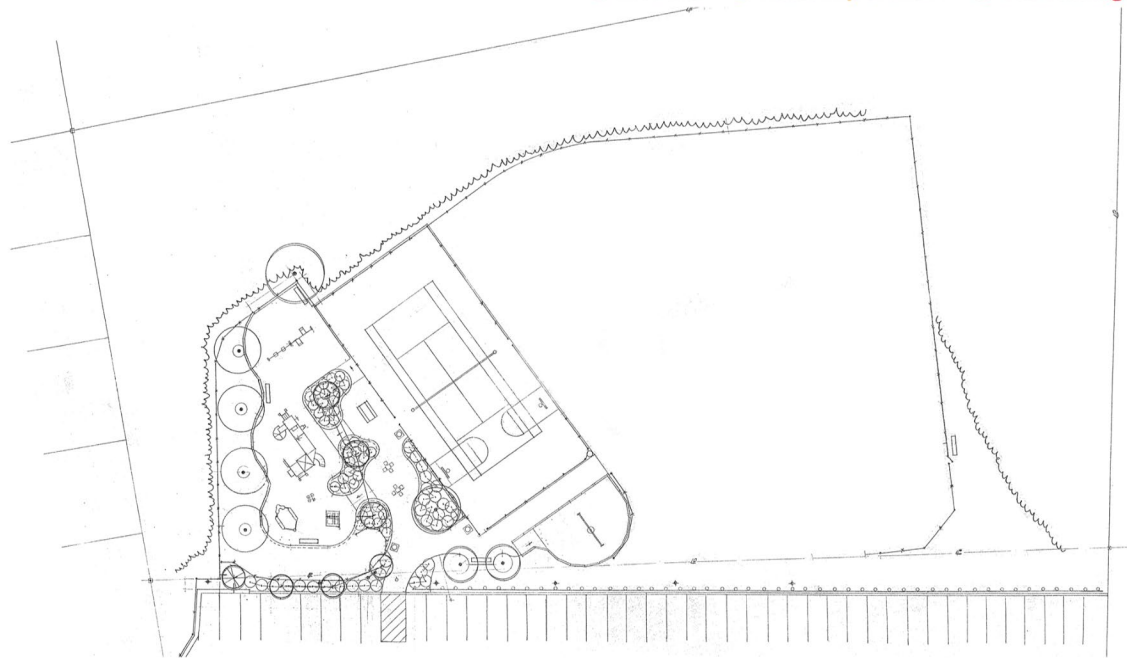


# STATION #1

## EXISTING SITE

Share your thoughts of the existing site:

● Love this! ● Needs Improvement ● Site Challenge



## EXISTING SITE

Share your thoughts of the existing site:

● Love this! ● Needs Improvement ● Site Challenge

### Play Area



### Court & Field



### Site Amenities



### Natural Areas





# STATION #2

## PARK ACTIVITIES

What activities would you participate in?

● Love this! ● Curious / Unsure ● Not for me

### Walking



### Enjoying Nature



### Sitting



### Community Events



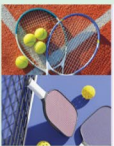
### Picnic / Gather



### Walking Dogs



### Tennis / Pickle Ball



### Basketball / Court Games



### Field Games



## PARK ACTIVITIES



What do you do at Rafferty Park in the **Spring / Summer?**



What do you do at Rafferty Park in the **Fall / Winter?**

I wish I could....

I wish I could....



# STATION #3

## TYPES OF PLAY

What type of play should be at Rafferty Park?

● Love this! ● Curious / Unsure ● Not for me

### Intergenerational / Social



- Play elements for all ages to enjoy + interact with
- Participatory play elements



- Play elements for passive participation



- Playful elements encouraging interaction

### Themed / Art Play



- Design around a theme
- e.g. birds / nature themed play



- Playable art sculptures

### Active Play Park



- Play incorporated throughout the park
- Fitness trails



- Movement

## TYPES OF PLAY

What type of play should be at Rafferty Park?

● Love this! ● Curious / Unsure ● Not for me

### Nature-Based Play Experiences



- Exploring nature through play
- Play hills



- Tree houses
- Discovering nature - butterflies, birds, hummingbirds, insects



- Stone boulders
- Natural logs

### Open-Ended Play



- Play opportunities to build + create
- Building with natural materials



- Explore materials - sand + water

### Sustainability / Learning



- Stationary bikes that generate electricity



- Rain gardens
- Educating about local wildlife



# ACTIVITIES RECAP

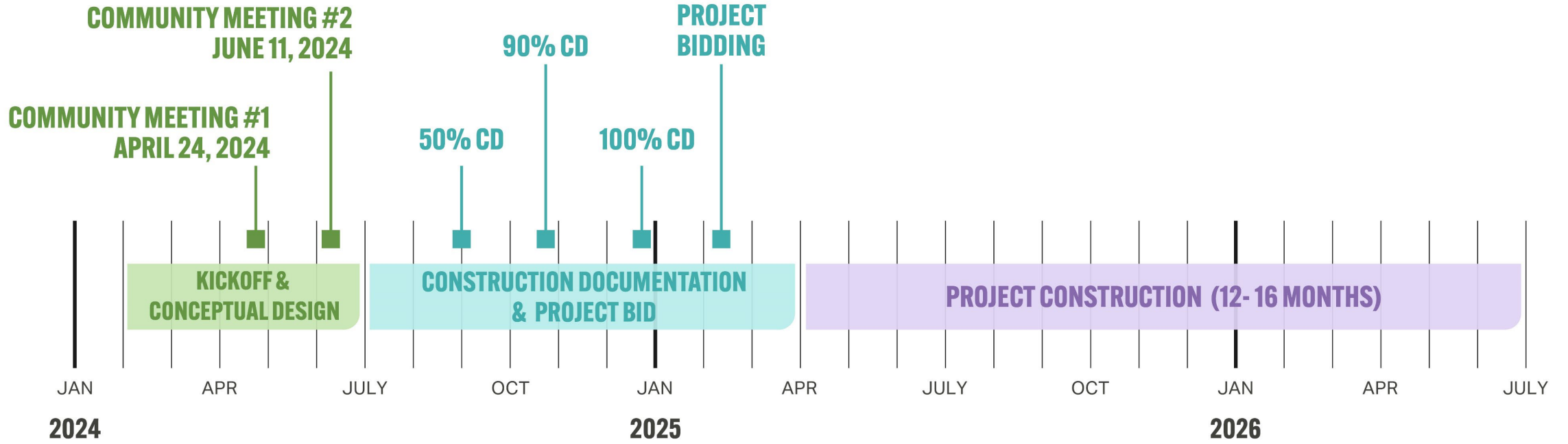
**STATION #1: EXISTING CONDITIONS**

**STATION #2: PARK ACTIVITIES**

**STATION #3: TYPES OF PLAY**



# NEXT STEPS



## What we'll be focusing on:

Working with you and our team to set a vision and design direction

Figuring out all the details, and developing the technical documents to get the project bid

Getting the project built!

## Let's work together!

Let us know what's important to you, and help us set the direction for what's next!

Let's check in to make sure we get the details right!

Let's keep each other updated: we'll keep you updated on progress, and you should keep us posted about construction impacts. **And let's get ready to celebrate a renovated park!**

# NEXT STEPS

## **Project Webpage:**

[camb.ma/raffertyparkproject](http://camb.ma/raffertyparkproject)



## **Project Contact:**

Gary Chan, AICP

Neighborhood Planner

[gchan@cambridgema.gov](mailto:gchan@cambridgema.gov)



