

# **RAFFERTY PARK**

**RENOVATION PROJECT**

**RENOVATION PLAN ▪ SEPTEMBER 10, 2024**

# RENOVATION PLAN

## We heard a strong preference for the general layout shown in “the Cube” scheme.

People liked the sizing and location of the different parts of the park. People did appreciate the more organic and creative feeling of the Wave scheme. We think these are reflected in this combined scheme.

## People liked using natural materials in play equipment.

Kids were especially interested in climbing and other more exciting play.

The loop pathway will provide an accessible path around the park and connect to new seating around the park. We also heard interest in planting areas along the edges of the park to bring a softer character to the site.

As the Alewife Quadrangle area redevelops over time, a future connection will make it easier to connect with future neighbors. As part of our current design process, we are looking at where a future connection would most likely meet the site.

Although we will not be building it as a part of this renovation project, we will be making sure a new connection will work well with and connect seamlessly to our proposed design. We expect that this connection will be part of the consideration as the area undergoes redevelopment over time.

## We heard different opinions and helpful questions about the field & court space.

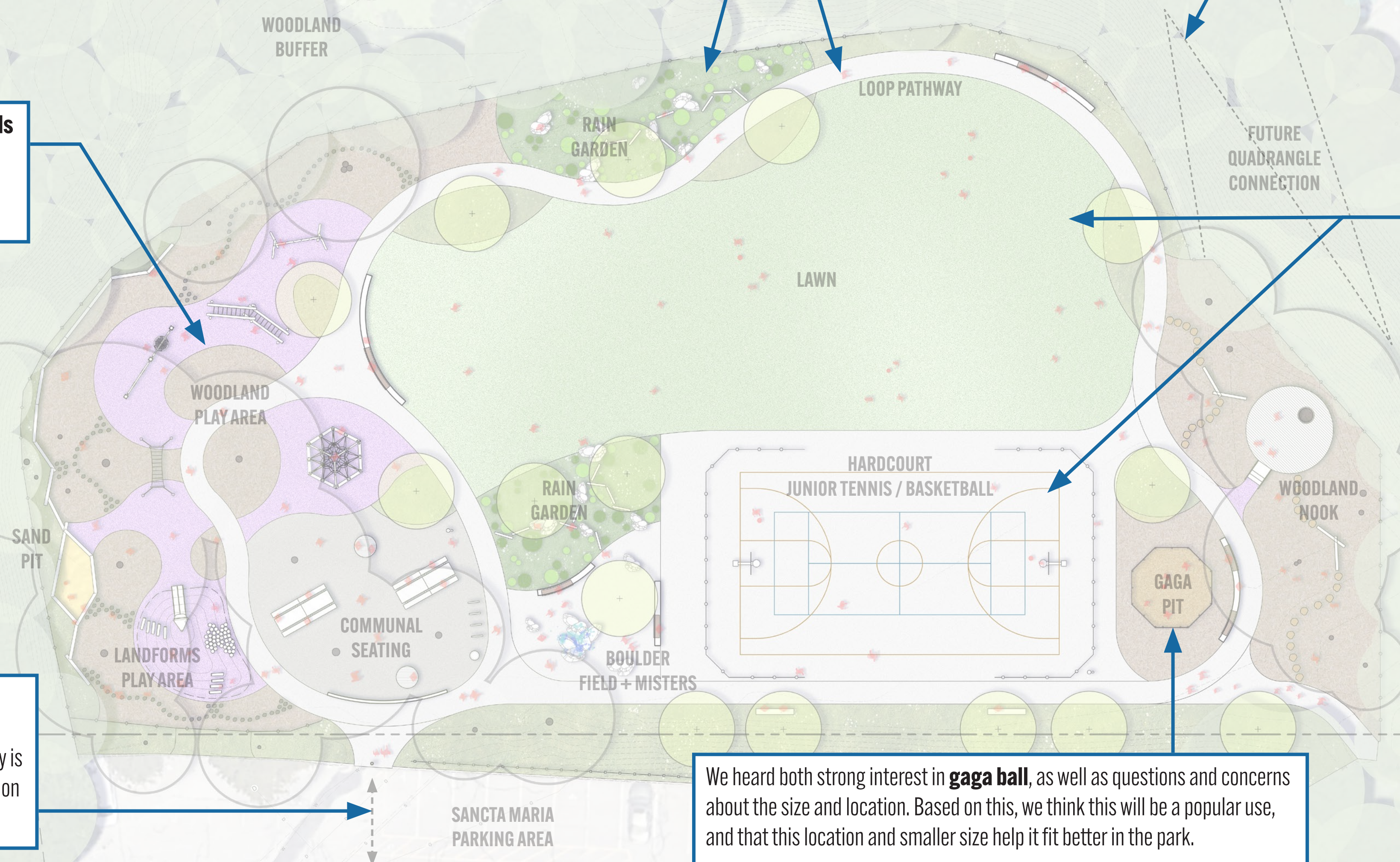
We heard some interest in a more open court space, and some interest as well in retaining a tennis court. We also heard feedback about making sure there is still ample field space.

As we did more outreach around this, we heard that much of the tennis use is more likely to be informal and casual (as opposed to competition-level play).

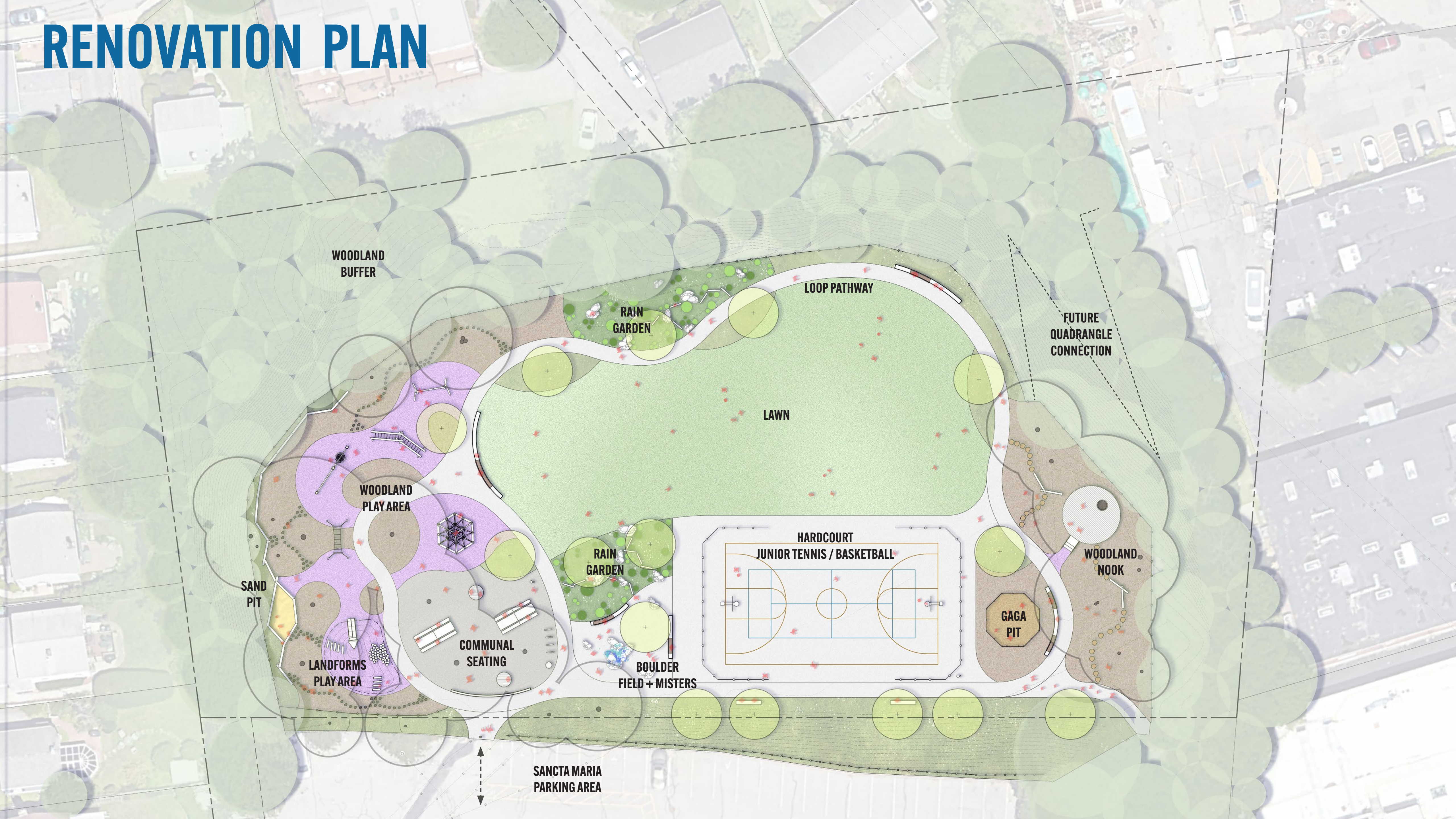
We think a good balance for a neighborhood park like this is a flexible court space based on the sizing of a junior-size tennis court, which works well for casual play, while also retaining field space. We heard that the different multi-court tennis complexes in the area are more attractive destinations for players interested in competitive play.

We heard both strong interest in gaga ball, as well as questions and concerns about the size and location. Based on this, we think this will be a popular use, and that this location and smaller size help it fit better in the park.

We heard feedback about improving the entry to the park from Concord Ave. The City is working with the Sancta Maria on looking at access to the park.



# RENOVATION PLAN



WOODLAND  
BUFFER

LOOP PATHWAY

FUTURE  
QUADRANGLE  
CONNECTION

RAIN  
GARDEN

LAWN

WOODLAND  
PLAY AREA

RAIN  
GARDEN

HARDCOURT  
JUNIOR TENNIS / BASKETBALL

WOODLAND  
NOOK

SAND  
PIT

COMMUNAL  
SEATING

BOULDER  
FIELD + MISTERS

GAGA  
PIT

LANDFORMS  
PLAY AREA

SANCTA MARIA  
PARKING AREA





## Landform Play Area



Slides

## Sand Play



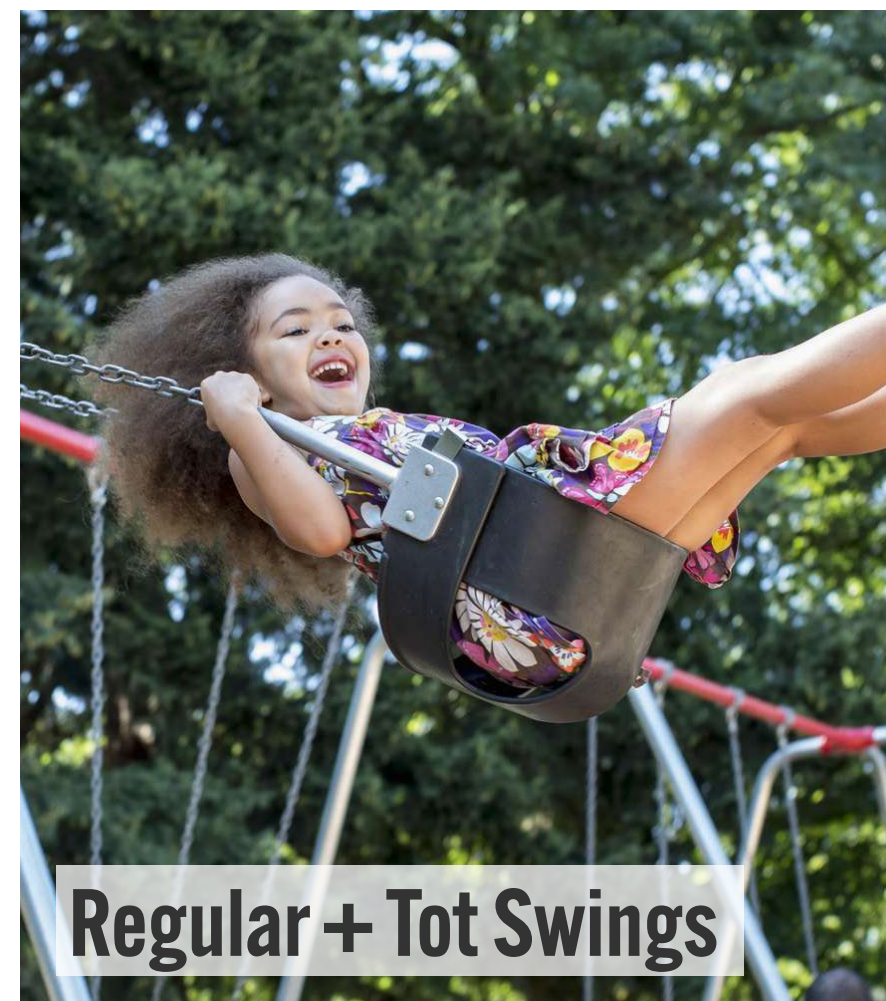
## Woodland Play Area



Cube Climber



Monkey Bars



Regular + Tot Swings



Basket Swing



Net Tunnel



## Water Play



**Boulder Field + Water Mist**

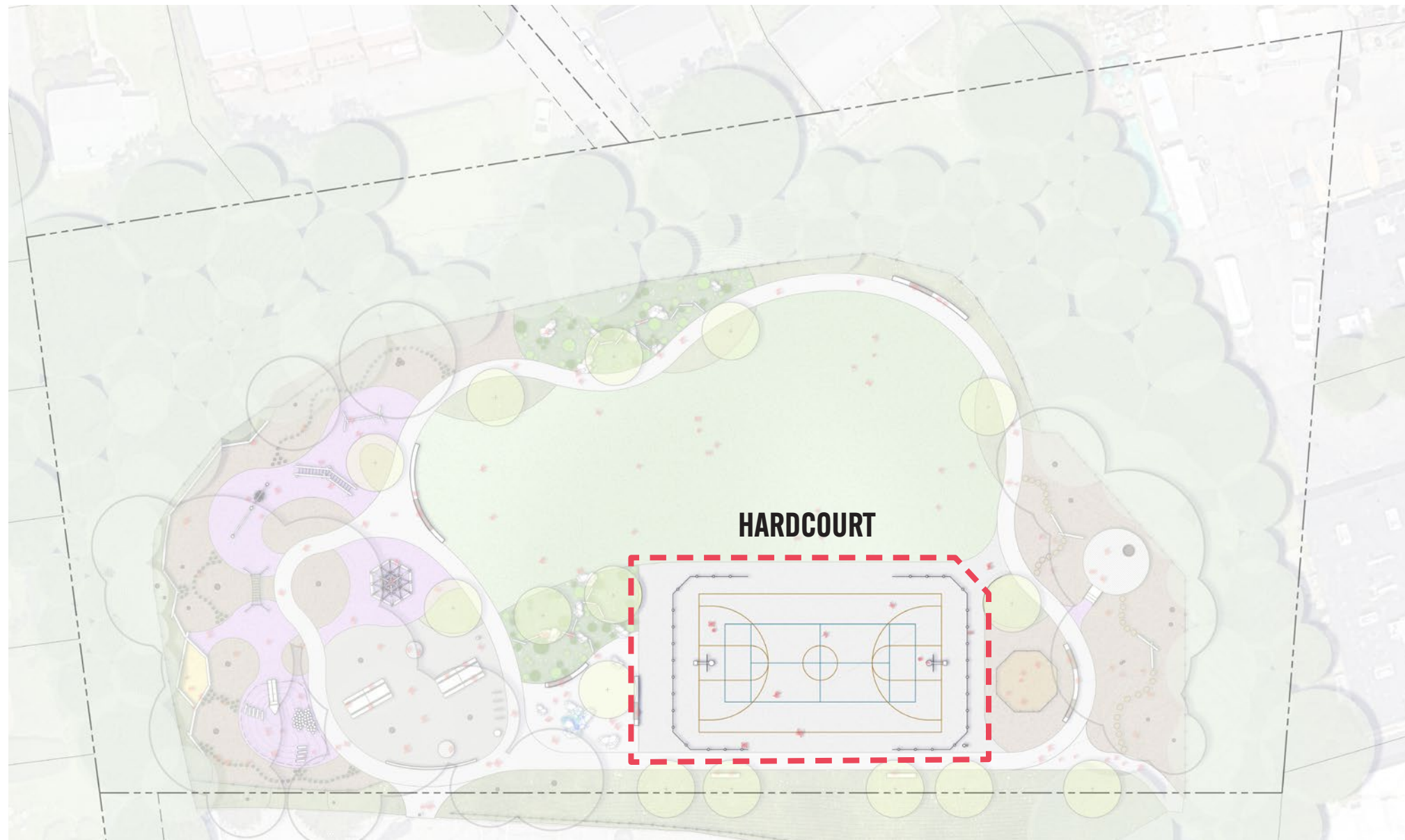


## Rain Gardens

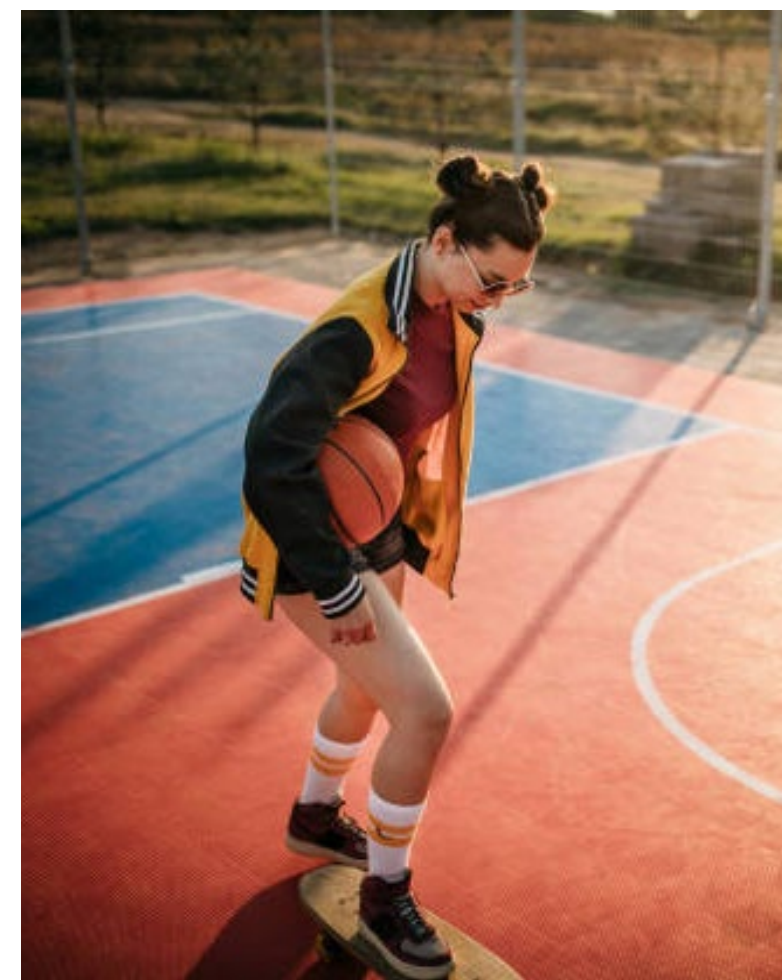


**Interactive Path Through Garden**





# Hardcourt Activities



# Hardcourt Sports





# Gaga Pit



# Woodland Nook



**Kit of Parts / Free Play**



**Log Steppers / Free Play**



**Tree Deck**



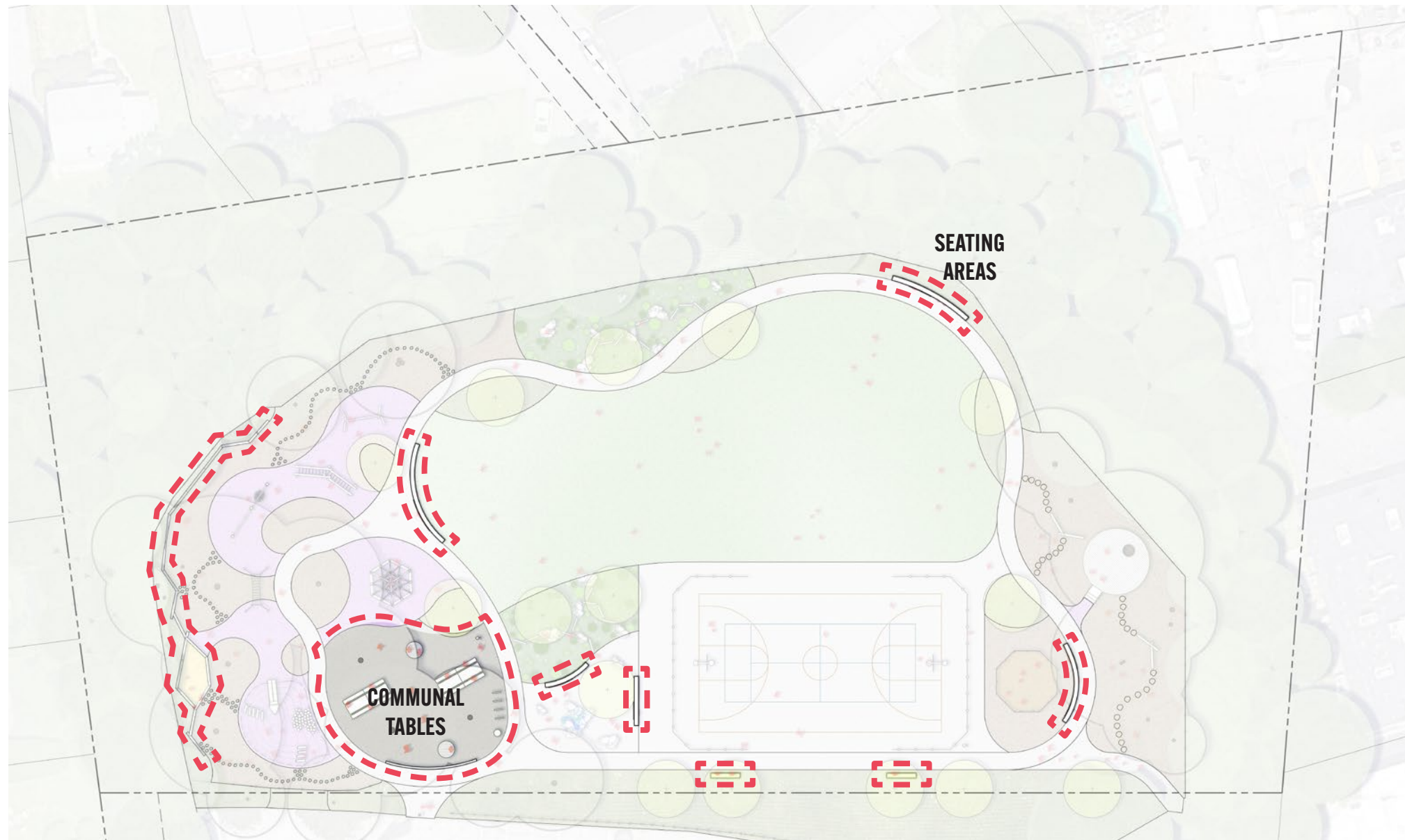


# Field Sports



# Field Activities

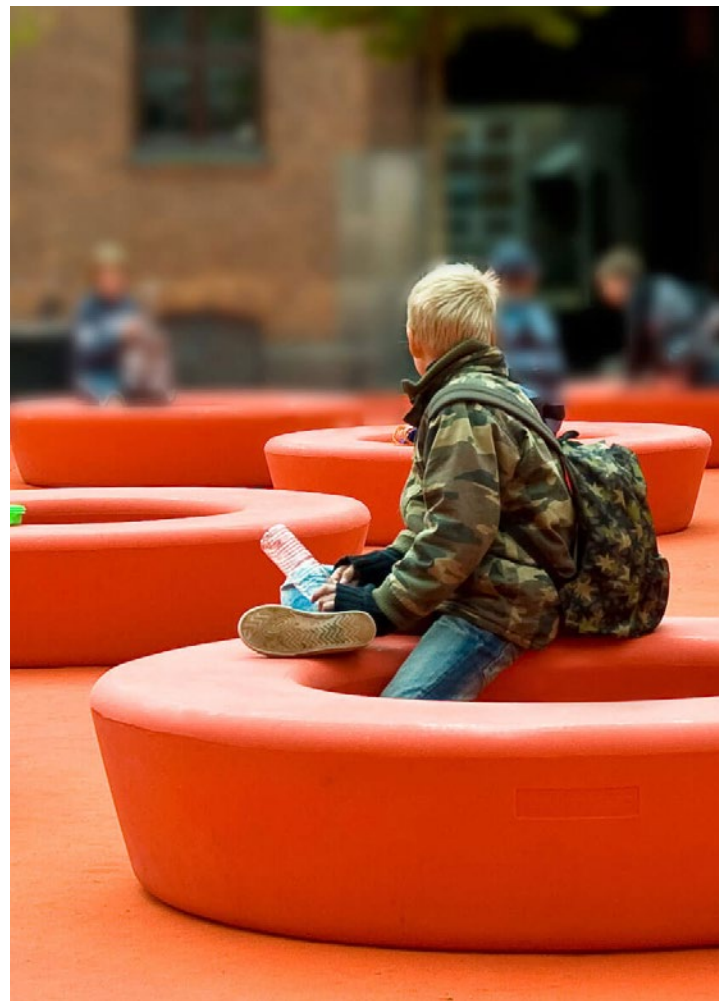




# Communal Tables

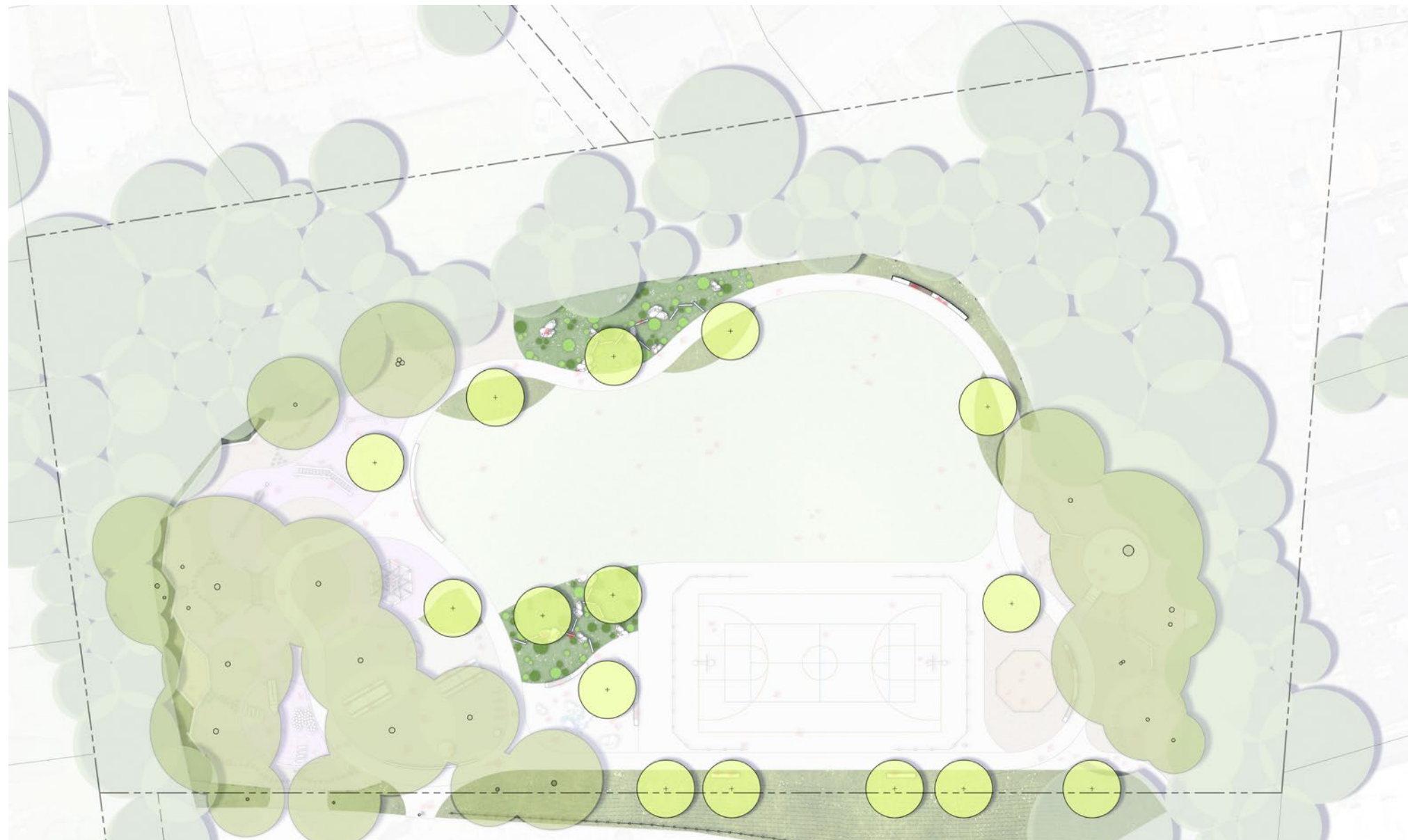


# Seating / Lounging

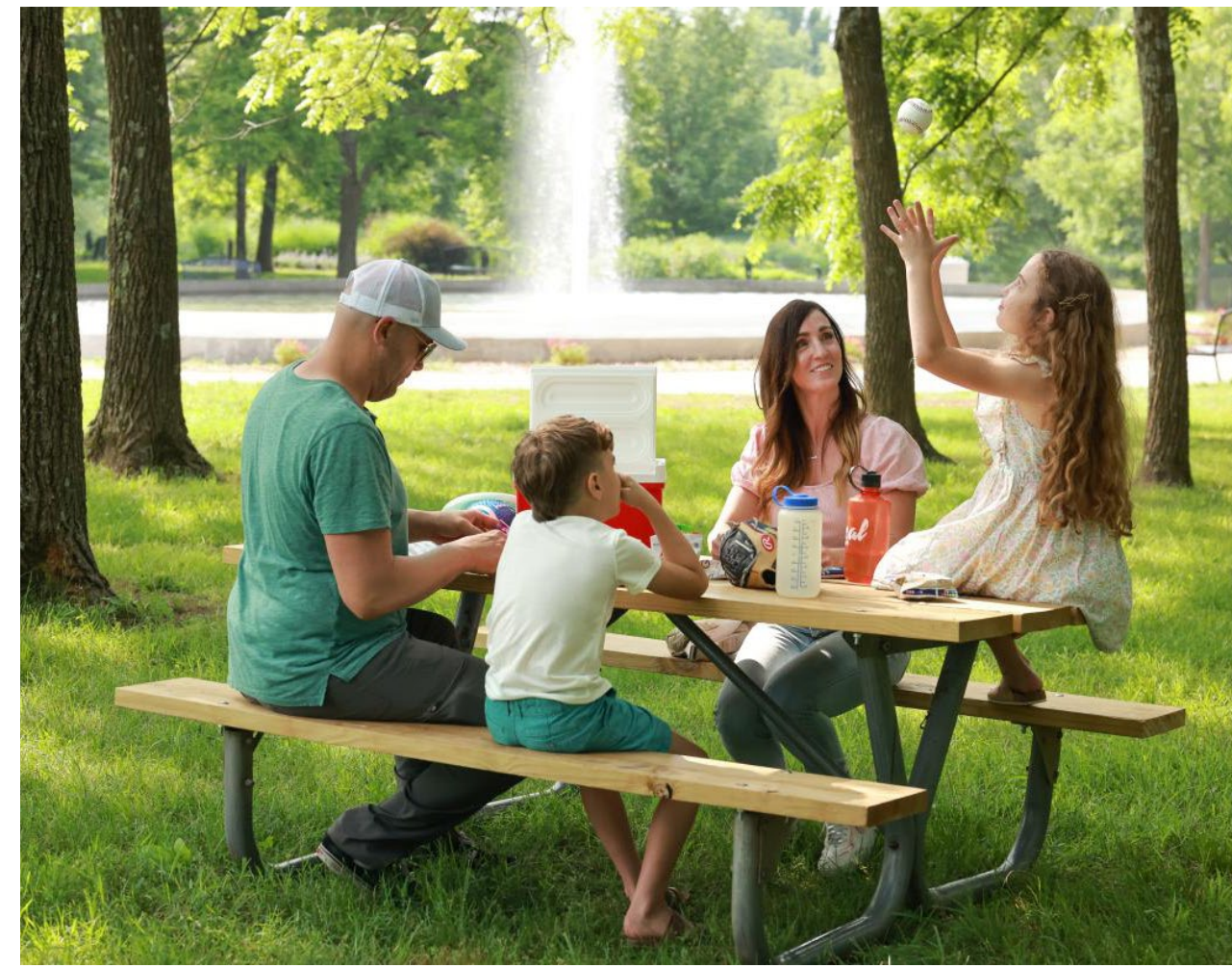


# Bike Racks





## Active Nature



## Exploration and Sensory Nature



## Planting Character

