

We're Renovating Raymond Park

Tell us what you think!

Our Guiding Principles

Raymond is a beloved community gathering spot where neighbors meet up regularly and form bonds, particularly over their children and dogs. There's a desire to improve the park but not lose what makes it special!

Respectfully Renew

As a baseline, Raymond Park will continue to:

1. Serve as a neighborhood destination for **play & recreation**.
2. Provide **ecosystem services** to the neighborhood & city.
3. Offer diverse spaces for **community connection & gathering**.

Amplify & Elevate

The park renovation can also:

1. Advance and diversify **play & recreation** opportunities
2. Be a model for ecosystem services & **environmental stewardship**
3. Uniquely showcase **neighborhood character & city cultural expression!**

Take a look at the three design concepts and tell us which ideas you like best!

It can be a mix-and-match. Your opinions will help the design team develop a draft plan for Raymond Park in the next phase of the renovation project.

Our Expected Project Timeline

Spring 2024

Community Engagement Wave #1
Let's hear your thoughts!

We are here!

Community Engagement Wave #2
Let's imagine the park!

Fall 2024

Community Engagement Wave #3
Let's refine the details!

Summer 2025

Envision

Gather community input to imagine the future of Raymond Park together!

Design

Develop and share design concepts and incorporate community feedback.

Build

Let's build a park! The construction phase begins.

Community Engagement Wave #1

Thank you for sharing your thoughts with us!

291
survey responses!



39
scavenger hunt participants!

"It's a community hub. All our children's friends gather there to play after school and on the weekends."

"It is the cross roads of the neighborhood drawing folks from all directions. I meet so many people there."



Visit our website for more information!

www.cambridgema.gov/RaymondPark



CITY OF CAMBRIDGE
Community Development
Department

Agency
Landscape + Planning

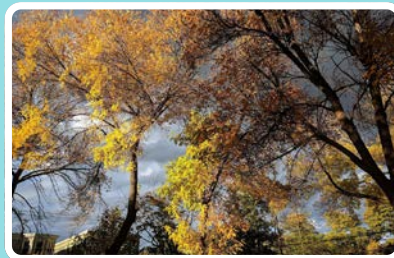
Raymond Park Existing Conditions



Respectfully Renew: The Renovation Will Make Several Critical Improvements as a Baseline



Address the persistent drainage issues in the field



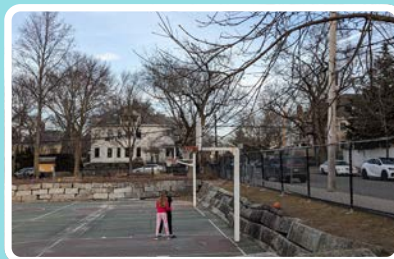
Seek to ensure the health and longevity of the tree canopy



Ensure the park meets ADA accessibility standards, at minimum



Maintain off-leash dog hours



Stabilize the slope along Upland Road



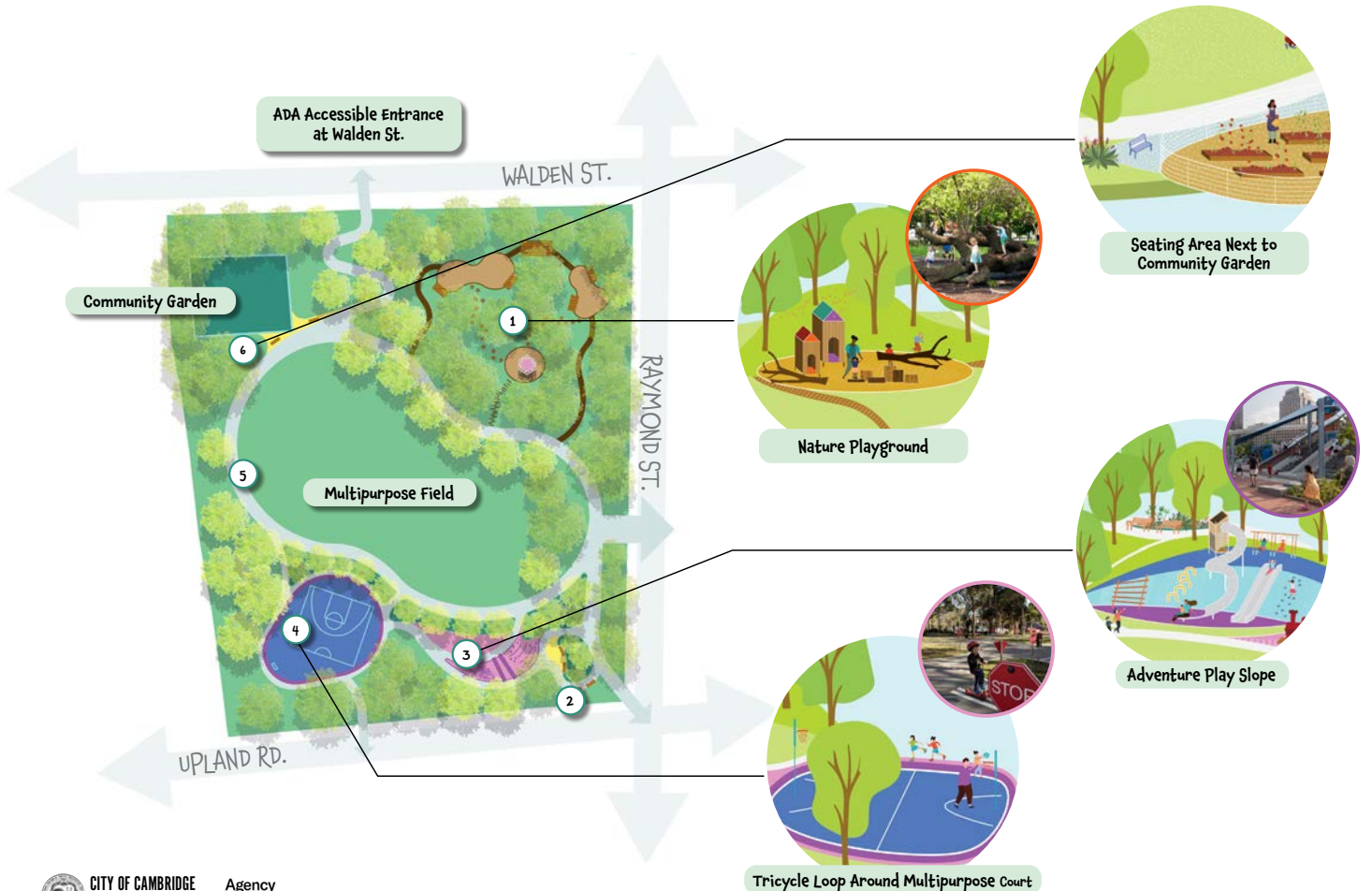
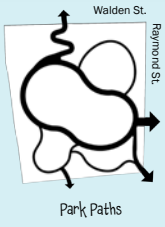
Repave all paths and resurface pavement

A

The Ramble

Tread Lightly, Play Hard

This concept amplifies play and natural elements by relocating the playground to the hill along Upland Road. This strategy protects the grove of mature trees at the corner of Raymond St. and Walden St. and creates a small, nature play zone beneath the trees.

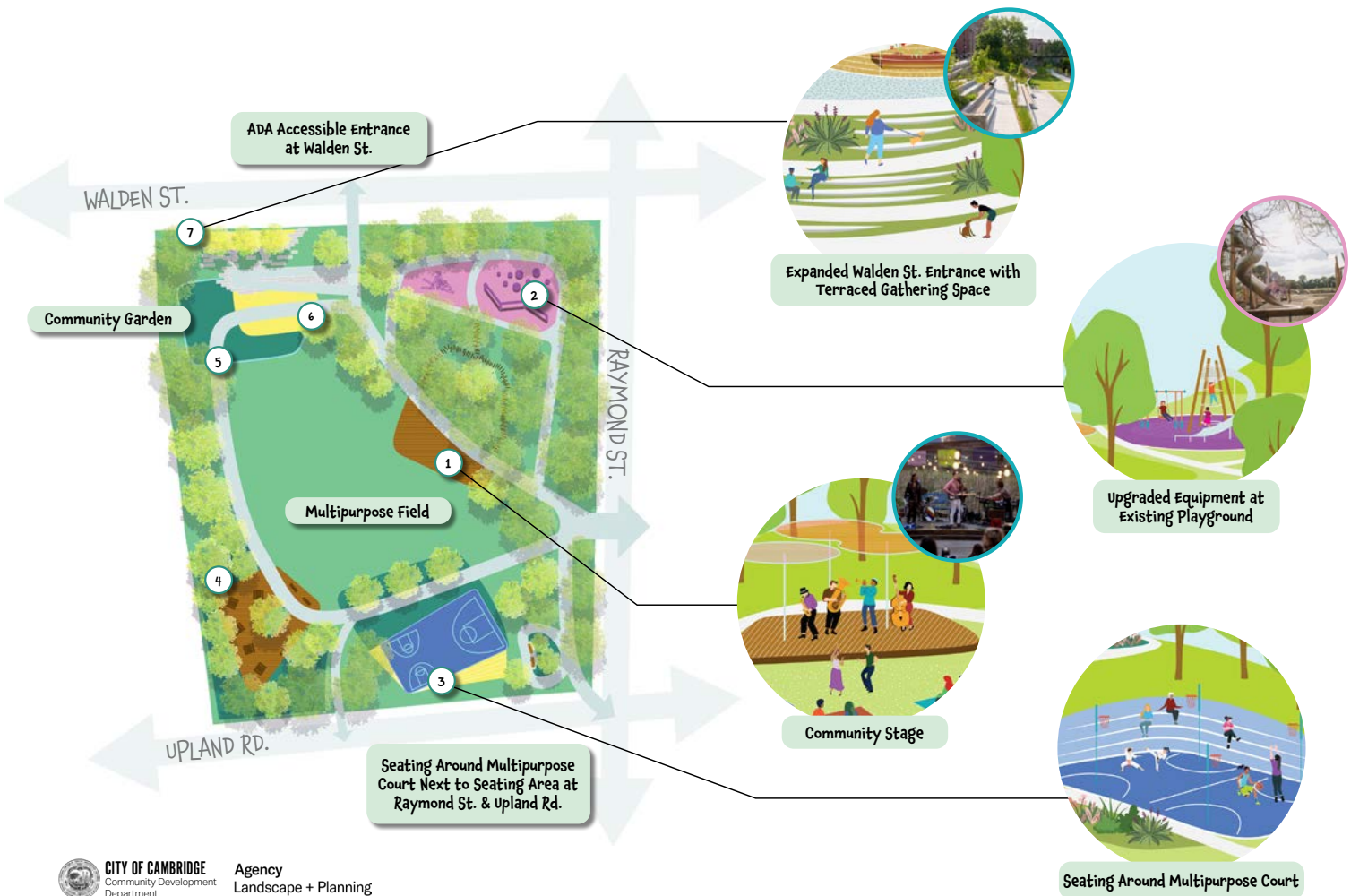


B

The Groves

Gather 'Round, Make Memories

This concept amplifies gathering spaces and play. A loop path through the park connects the community garden, playground, and multipurpose court. A community stage, picnic area surrounded by trees, and welcoming entrance on Walden St. adds several new areas for community gathering.



C The Terraces

Step Up, Look Out

This concept amplifies gathering spaces and natural elements. An elevated boardwalk in the grove of mature trees where the playground currently is gives visitors the opportunity to walk amongst the trees. The playground and multipurpose sports court are relocated to the southeast corner of the park, making room for an amphitheater-style gathering space in the slope along Upland Road.

