



Massachusetts  
Institute of  
Technology

2024

# Town Gown Presentation to the City of Cambridge

February 4, 2025



# Introduction

## Glen Shor

Executive Vice President and Treasurer

Stephen A.  
Schwarzma  
College of  
Computing

# The Climate Project at MIT Leadership

---



- Dr. Evelyn Wang will rejoin MIT as Vice President for Climate beginning in April 2025.
- Dr. Wang has just concluded her service as Director of the U.S. Department of Energy's Advanced Research Projects Agency-Energy (ARPA-E).
- Prior to leading ARPA-E, Dr. Wang served as Professor of Engineering and Head of the Department of Mechanical Engineering at MIT.
- Her research has focused on applying nanotechnology to heat transfer resulting in high efficiency, clean energy, and clean water solutions.

# Climate Mission Leads


## Climate Missions

- Decarbonizing energy and industry
- Restoring the atmosphere, protecting the land and oceans
- Empowering frontline communities
- Building and adapting healthy, resilient cities
- Inventing new policy approaches
- Wild cards (unconventional solutions)



# MIT's Mission

---

A photograph of the Massachusetts Institute of Technology (MIT) dome building, a large neoclassical structure with a prominent dome and a portico supported by columns. The building is surrounded by green lawns and trees with autumn foliage. The sky is clear and blue.

The mission of MIT is to advance knowledge and educate students in science, technology, and other areas of scholarship that will best serve the nation and the world in the 21st century.



# Academic Projects

**Joe Higgins**

Vice President for Campus Services and  
Stewardship



# Student Life

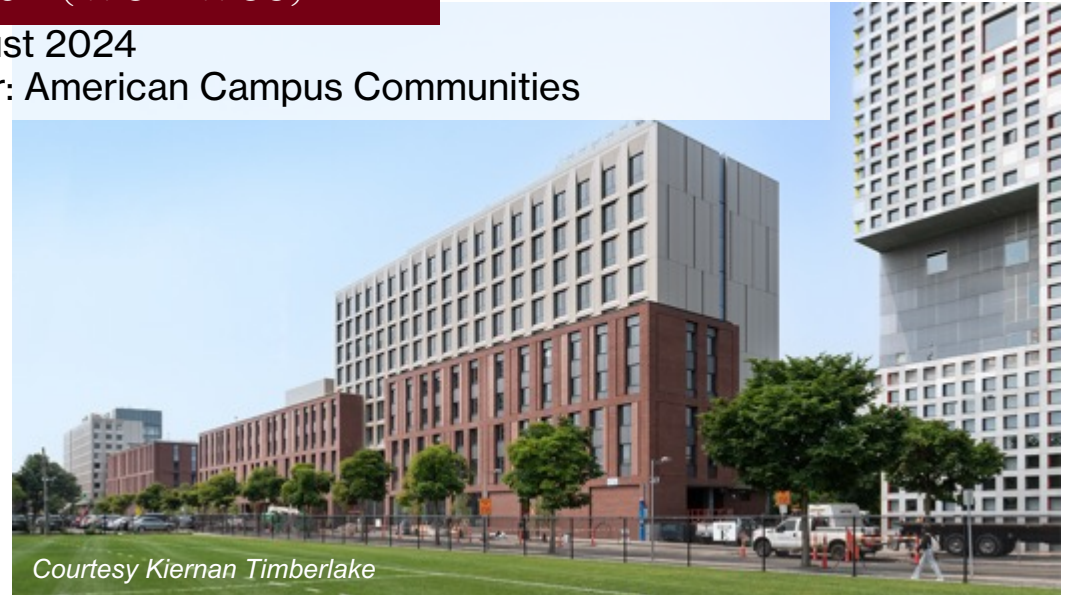
## Graduate Junction (W87-W88)

Opened August 2024

Architect: Kieran Timberlake; Developer: American Campus Communities



Courtesy Kiernan Timberlake

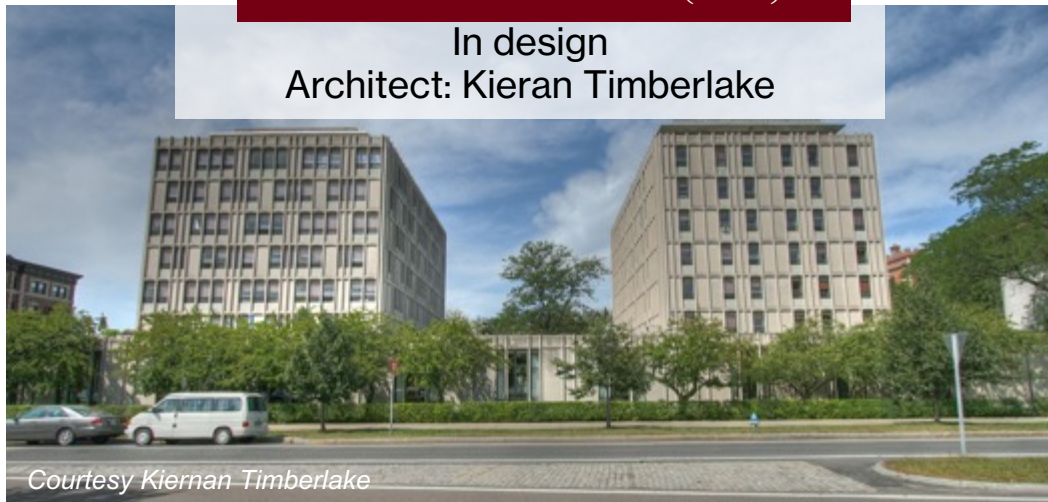


Courtesy Kiernan Timberlake

## McCormick Hall (W4)

In design

Architect: Kieran Timberlake



Courtesy Kiernan Timberlake

## East Campus Undergraduate Residence (62 & 64)

In construction, target 2025

Architect: William Rawn Associates

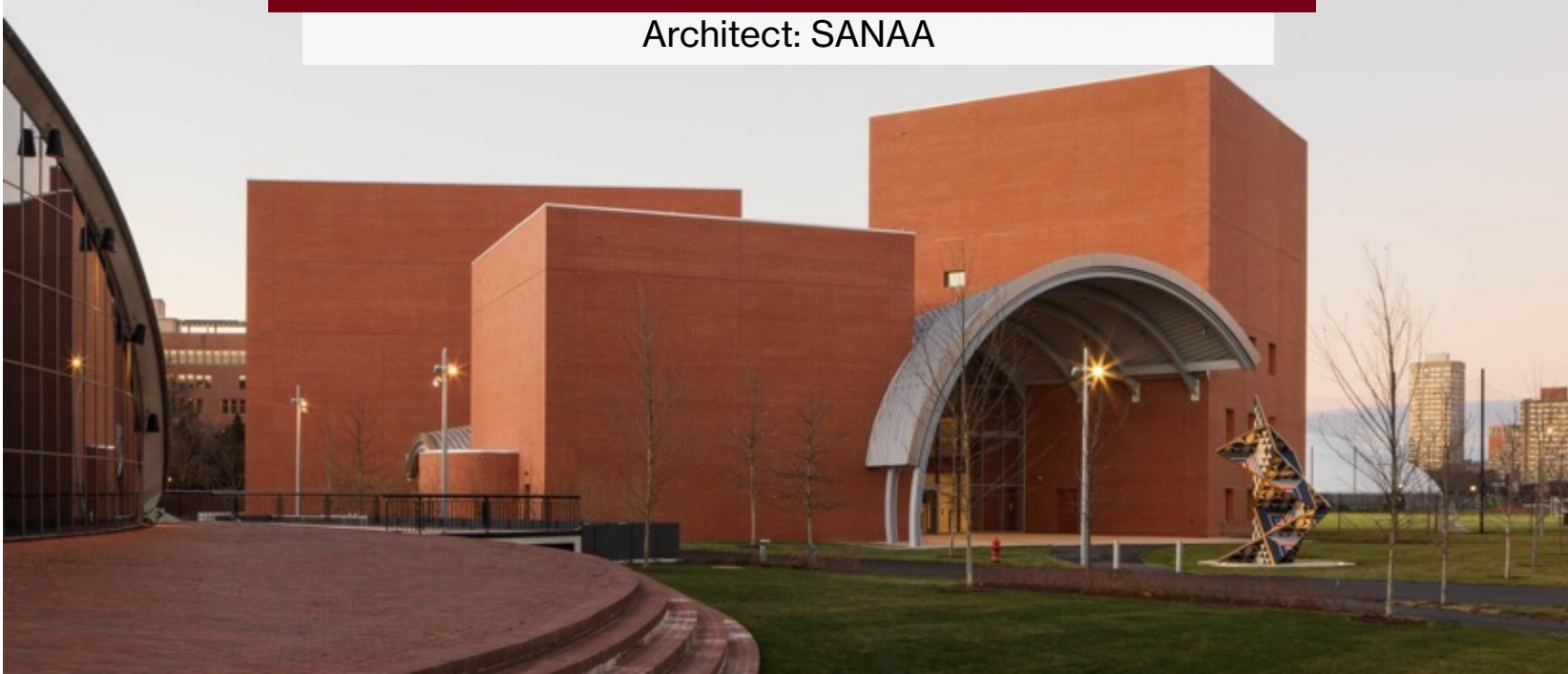


Courtesy William Rawn Associates

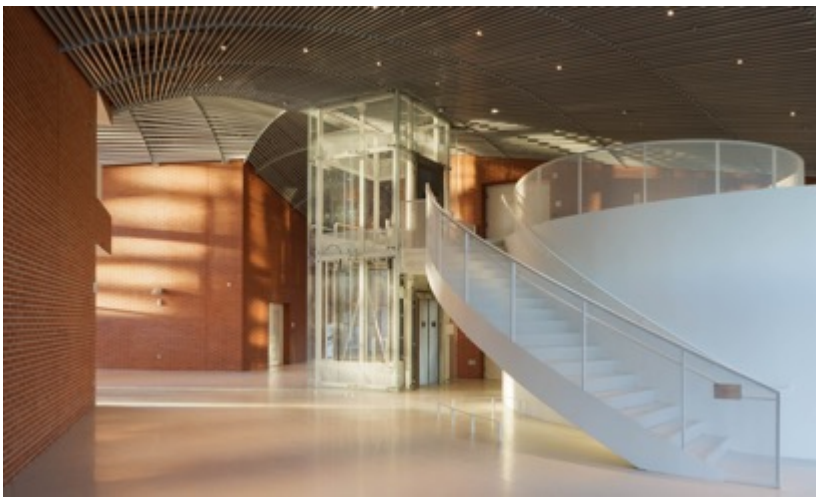
# Academic (complete)

Edward and Joyce Linde Music Building (W18)

Architect: SANAA



Credit: Ken'ichi Suzuki



Tina and Hamid Moghadam Building (55)

Anmahian Winton Architects



Credit: Paige Brown

MIT Schwarzman College of Computing (45)

Skidmore, Owings & Merrill



Courtesy SOM



# Academic (in construction)



Metropolitan Warehouse (W41)

Target 2026

Architect: Diller Scofidio + Renfro



# Open Space Stewardship

Eastman and McDermott Courts

(In design)



Tree Canopy Stewardship



# Sustainability, Resiliency, and Decarbonization

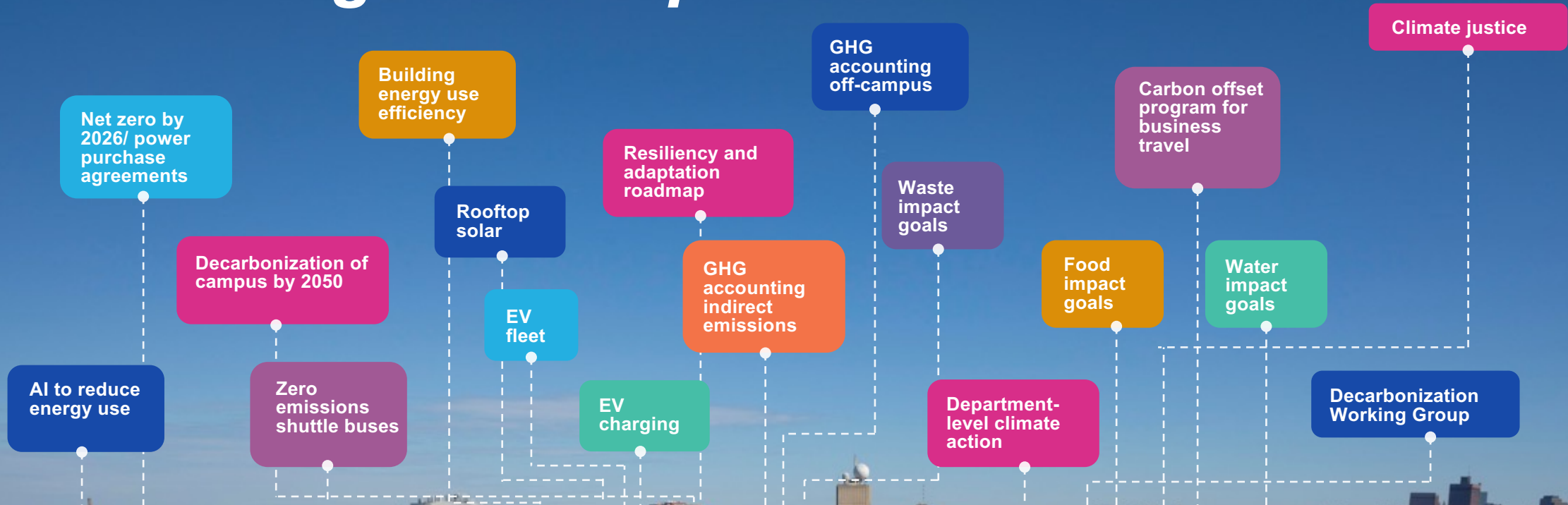
---

**Julie Newman, PhD**

Director of Sustainability



# Campus Climate Commitments: *Activating the campus*



# Accelerating the decarbonization of regional grids



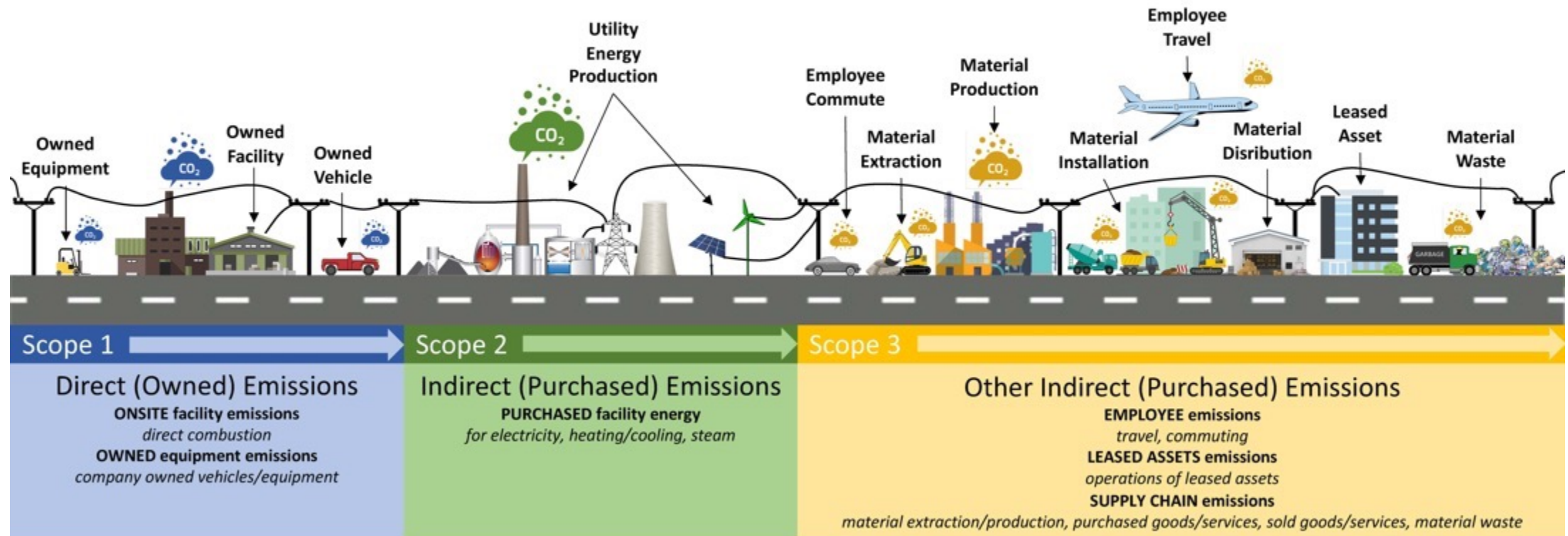
Enabling large-scale renewable energy projects through partnerships achieves immediate, significant impact in reducing emissions and are key to achieving MIT's net-zero goal

# Accounting for Scope 3 emissions



MIT has committed to net-zero Scope 1, 2, and select Scope 3 emissions by 2026

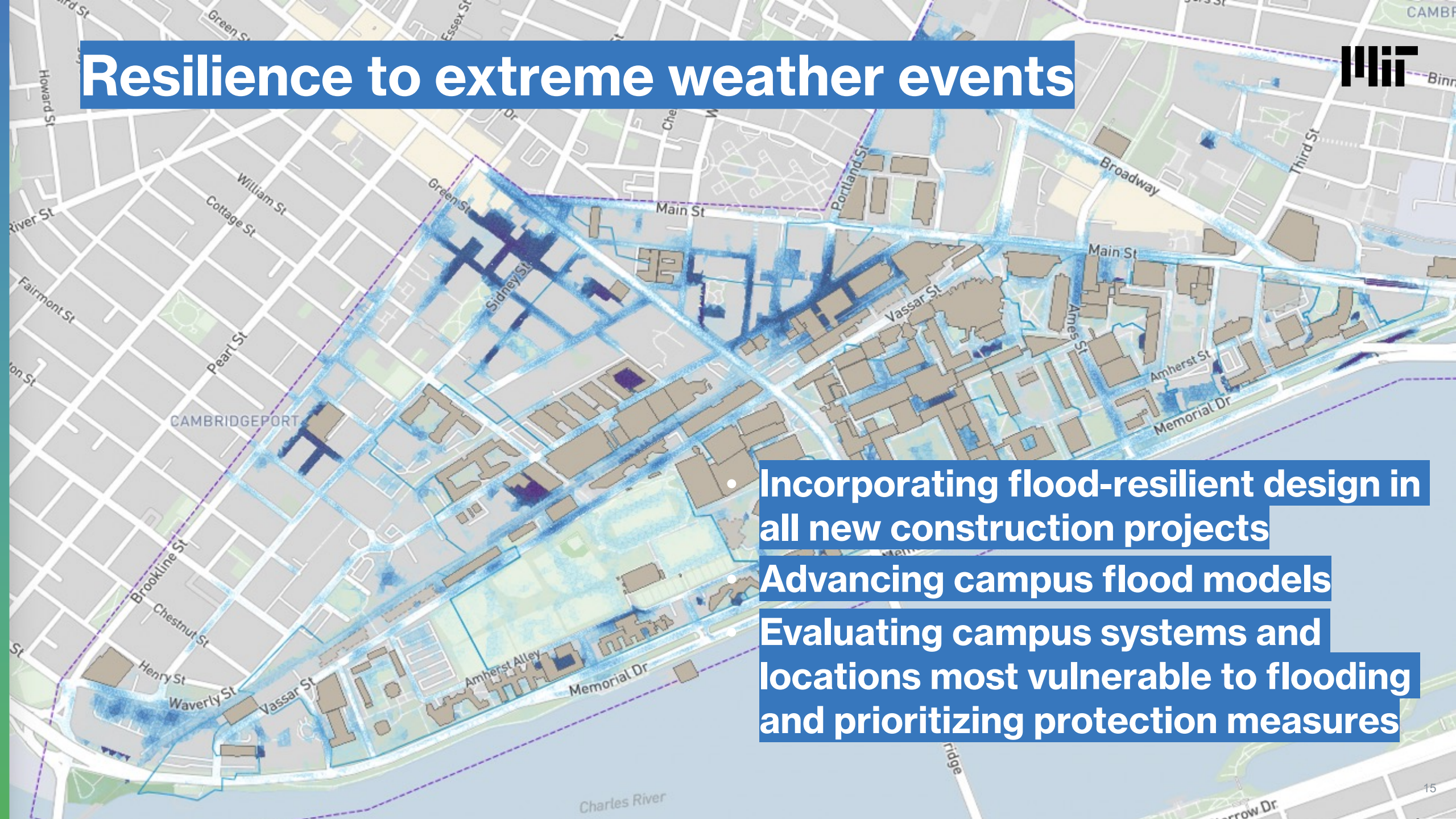
Scope 3 emissions are a key part of MIT's new climate action plan



Graphic by Stacy Smedley, 2021



# Resilience to extreme weather events



• Incorporating flood-resilient design in all new construction projects

• Advancing campus flood models

• Evaluating campus systems and locations most vulnerable to flooding and prioritizing protection measures

# Cool Spots on Campus

New in 2024  
Open to the public



BROAD DISCOVERY CENTER (NE30)

MIT MUSEUM (E28)

KOCH INSTITUTE PUBLIC GALLERIES (76)

MIT WELCOME CENTER (E38)



# Commercial Projects

**Michael Owu**

Vice President, Real Estate



*Credit: Isenberg Projects*

# 75 Broadway & 200 Main Street

75 Broadway



*Credit: Elkus Manfredi Architects*



*Credit: Design Distill*

200 Main Street



*Credit: Design Distill*

# Infrastructure Update at Kendall Common

---



# Rollerama



Credit:  
Isenberg Projects

# Retail Update



238 Main Street - PingPod - Credit: Steve Dunwell Photography



238 Main Street - Flat Top Johnny's - Credit: Aram Boghosian



314 Main Street - Ripple Café - Credit: Steve Dunwell Photography



238 Main Street - Bakey - Credit: Bakey



290 Main Street Food Hall - Credit: Eimer Design



460 Mass Ave - Darling - Credit: JJ Welch

# MIT in the Community

## Sarah Gallop

Director, Office of Government and  
Community Relations



# Supporting Cambridge K-12 Students

---



*Credit: Michael J. Clarke Photography*



*Courtesy of CCSC*

# Cambridge Community Events



*Credit: Isenberg Projects*



*Credit: Michael J. Clarke Photography*



# The Job Connector by MIT



