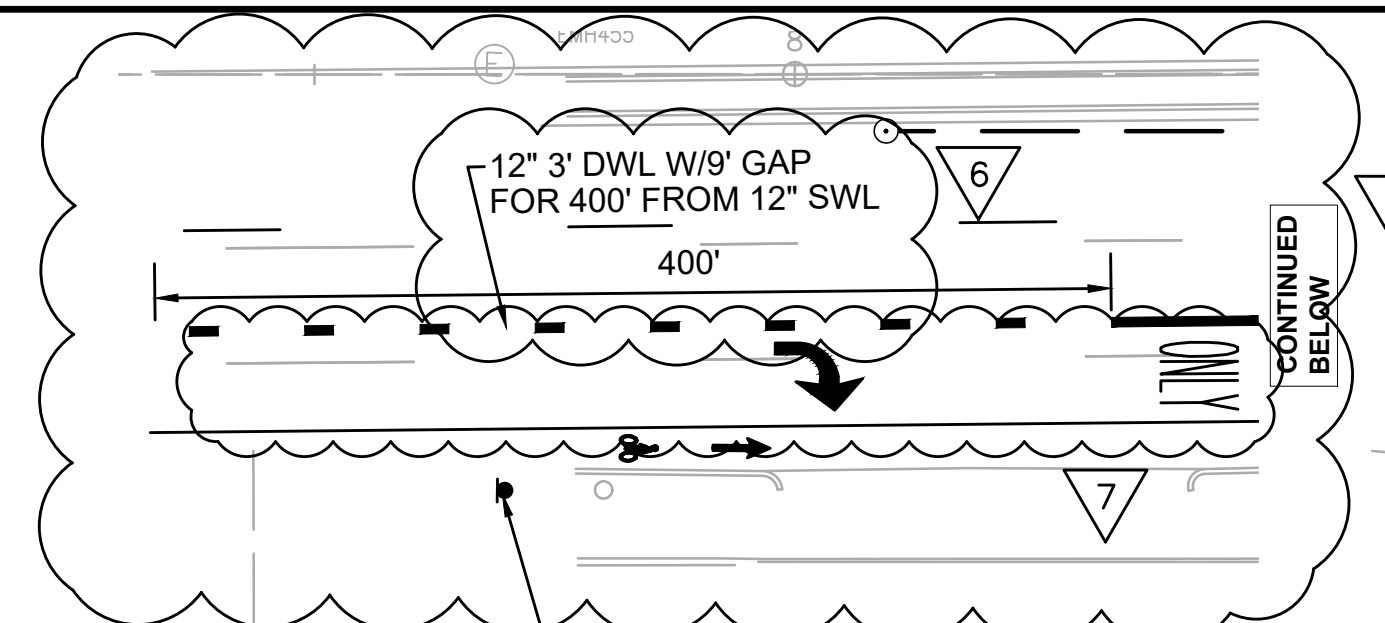
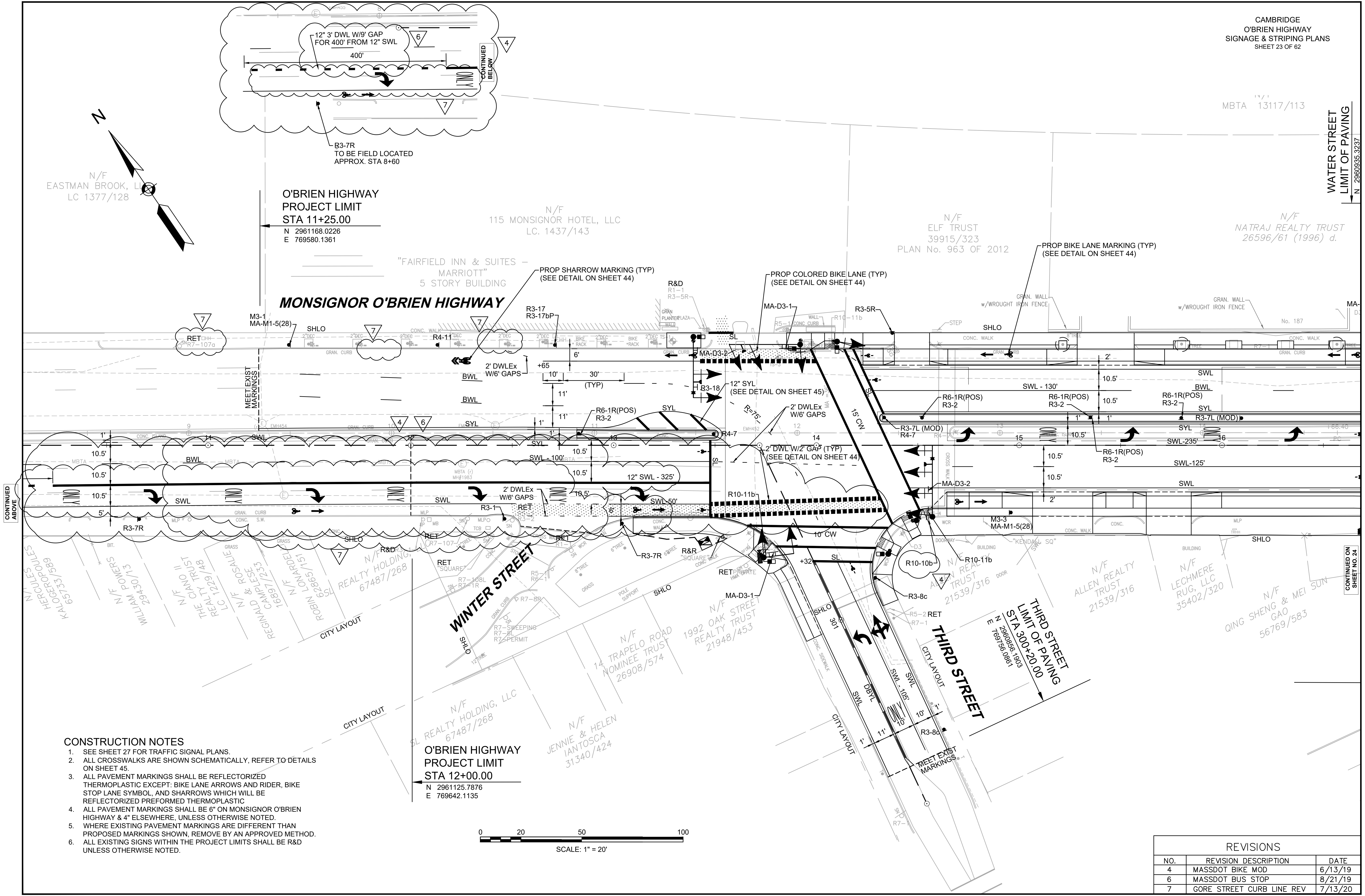


MBTA 13117/113

WATER STREET
LIMIT OF PAVING

11554-PH1-TSIG-REV.DWG
Plotted on: 27-Aug-2020 1:12 PM
N 2960935.5237



O'BRIEN HIGHWAY
PROJECT LIMIT
STA 11+25.00
N 2961168.0226
E 769580.1361

N/F
115 MONSIGNOR HOTEL, LLC
LC. 1437/143

N/F
ELF TRUST
39915/323
PLAN No. 963 OF 2012

N/F
NATRAJ REALTY TRUST
26596/61 (1996) d.

"FAIRFIELD INN & SUITES -
MARRIOTT"
5 STORY BUILDING
MONSIGNOR O'BRIEN HIGHWAY

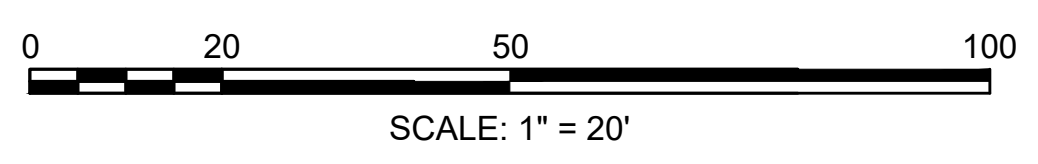
WINTER STREET

THIRD STREET

O'BRIEN HIGHWAY
PROJECT LIMIT
STA 12+00.00
N 2961125.7876
E 769642.1135

THIRD STREET
LIMIT OF PAVING
STA 300+20.00
N 2960856.1903
E 769736.0961

- CONSTRUCTION NOTES**
1. SEE SHEET 27 FOR TRAFFIC SIGNAL PLANS.
 2. ALL CROSSWALKS ARE SHOWN SCHEMATICALLY, REFER TO DETAILS ON SHEET 45.
 3. ALL PAVEMENT MARKINGS SHALL BE REFLECTORIZED THERMOPLASTIC EXCEPT: BIKE LANE ARROWS AND RIDER, BIKE STOP LANE SYMBOL, AND SHARROWS WHICH WILL BE REFLECTORIZED PREFORMED THERMOPLASTIC
 4. ALL PAVEMENT MARKINGS SHALL BE 6" ON MONSIGNOR O'BRIEN HIGHWAY & 4" ELSEWHERE, UNLESS OTHERWISE NOTED.
 5. WHERE EXISTING PAVEMENT MARKINGS ARE DIFFERENT THAN PROPOSED MARKINGS SHOWN, REMOVE BY AN APPROVED METHOD.
 6. ALL EXISTING SIGNS WITHIN THE PROJECT LIMITS SHALL BE R&D UNLESS OTHERWISE NOTED.



REVISIONS		
NO.	REVISION DESCRIPTION	DATE
4	MASSDOT BIKE MOD	6/13/19
6	MASSDOT BUS STOP	8/21/19
7	GORE STREET CURB LINE REV	7/13/20

CONTINUED ABOVE

CONTINUED ON SHEET NO. 24

N/F MBTA
13117/113
13156/34
19402/34
(PLAN No. 1358 OF 1961)
PARCEL MBTA-1
(PLAN No. 577 OF 2017)

N/F
DW NP Q, R, V PROPERTY, LLC
69489/200
(PLAN No. 577 OF 2017)
(PLAN No. 644 OF 2017)
PARCEL Q-3

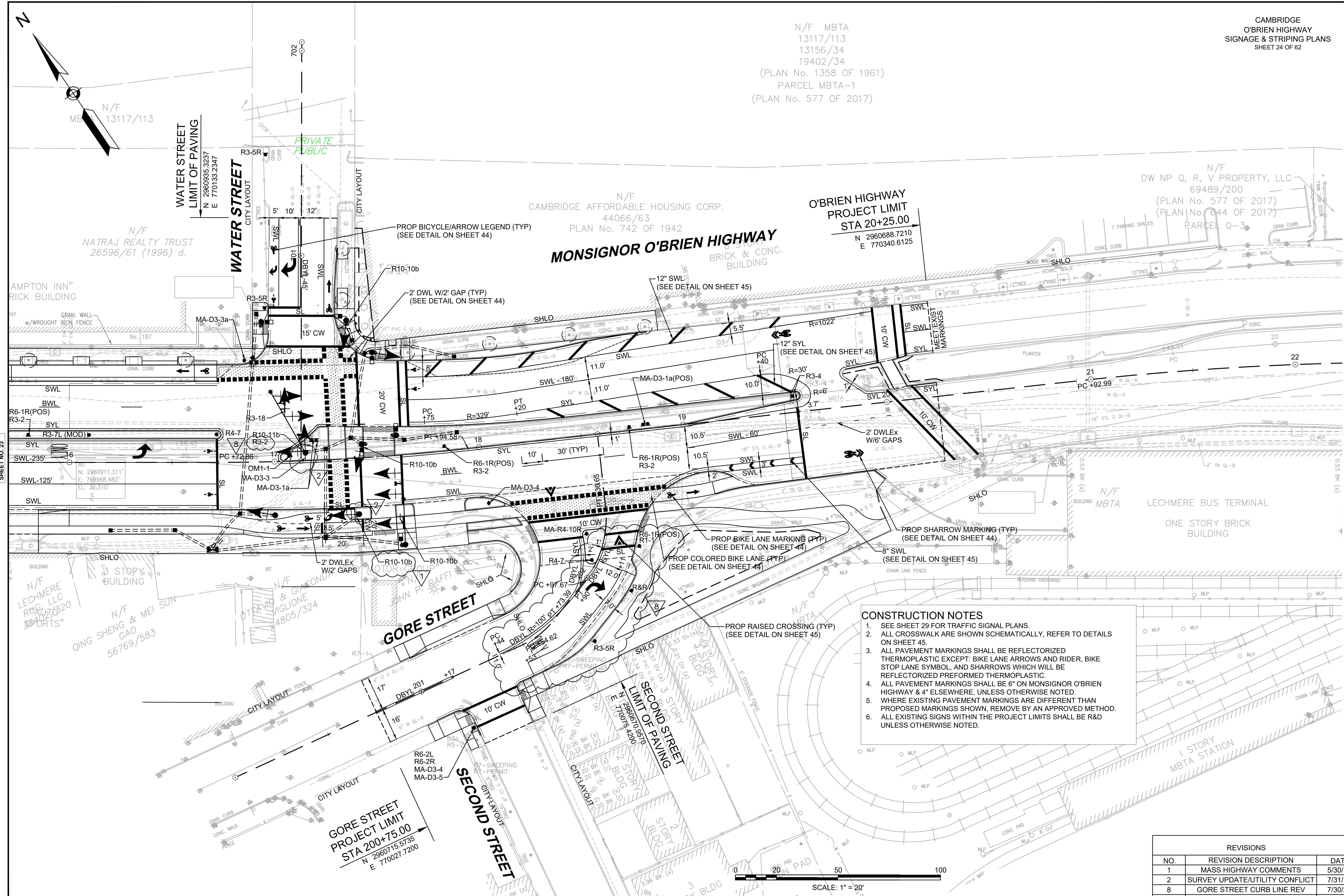
N/F
CAMBRIDGE AFFORDABLE HOUSING CORP.
44066/63
PLAN No. 742 OF 1942

O'BRIEN HIGHWAY
PROJECT LIMIT
STA 20+25.00
N 2960688.7210
E 770340.6125

N/F
NATRAJ REALTY TRUST
26596/61 (1996) d.

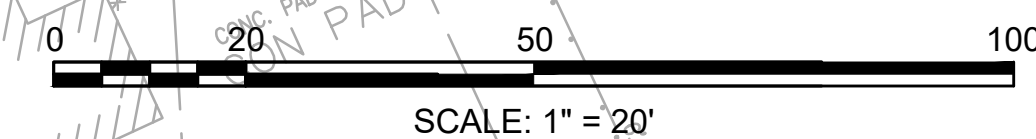
MONSIGNOR O'BRIEN HIGHWAY
BRICK & CONC. BUILDING

N/F MBTA
LECHMERE BUS TERMINAL
ONE STORY BRICK BUILDING



- CONSTRUCTION NOTES**
- SEE SHEET 29 FOR TRAFFIC SIGNAL PLANS.
 - ALL CROSSWALK ARE SHOWN SCHEMATICALLY, REFER TO DETAILS ON SHEET 45.
 - ALL PAVEMENT MARKINGS SHALL BE REFLECTORIZED THERMOPLASTIC EXCEPT: BIKE LANE ARROWS AND RIDER, BIKE STOP LANE SYMBOL, AND SHARROWS WHICH WILL BE REFLECTORIZED PREFORMED THERMOPLASTIC.
 - ALL PAVEMENT MARKINGS SHALL BE 6" ON MONSIGNOR O'BRIEN HIGHWAY & 4" ELSEWHERE, UNLESS OTHERWISE NOTED.
 - WHERE EXISTING PAVEMENT MARKINGS ARE DIFFERENT THAN PROPOSED MARKINGS SHOWN, REMOVE BY AN APPROVED METHOD.
 - ALL EXISTING SIGNS WITHIN THE PROJECT LIMITS SHALL BE R&D UNLESS OTHERWISE NOTED.

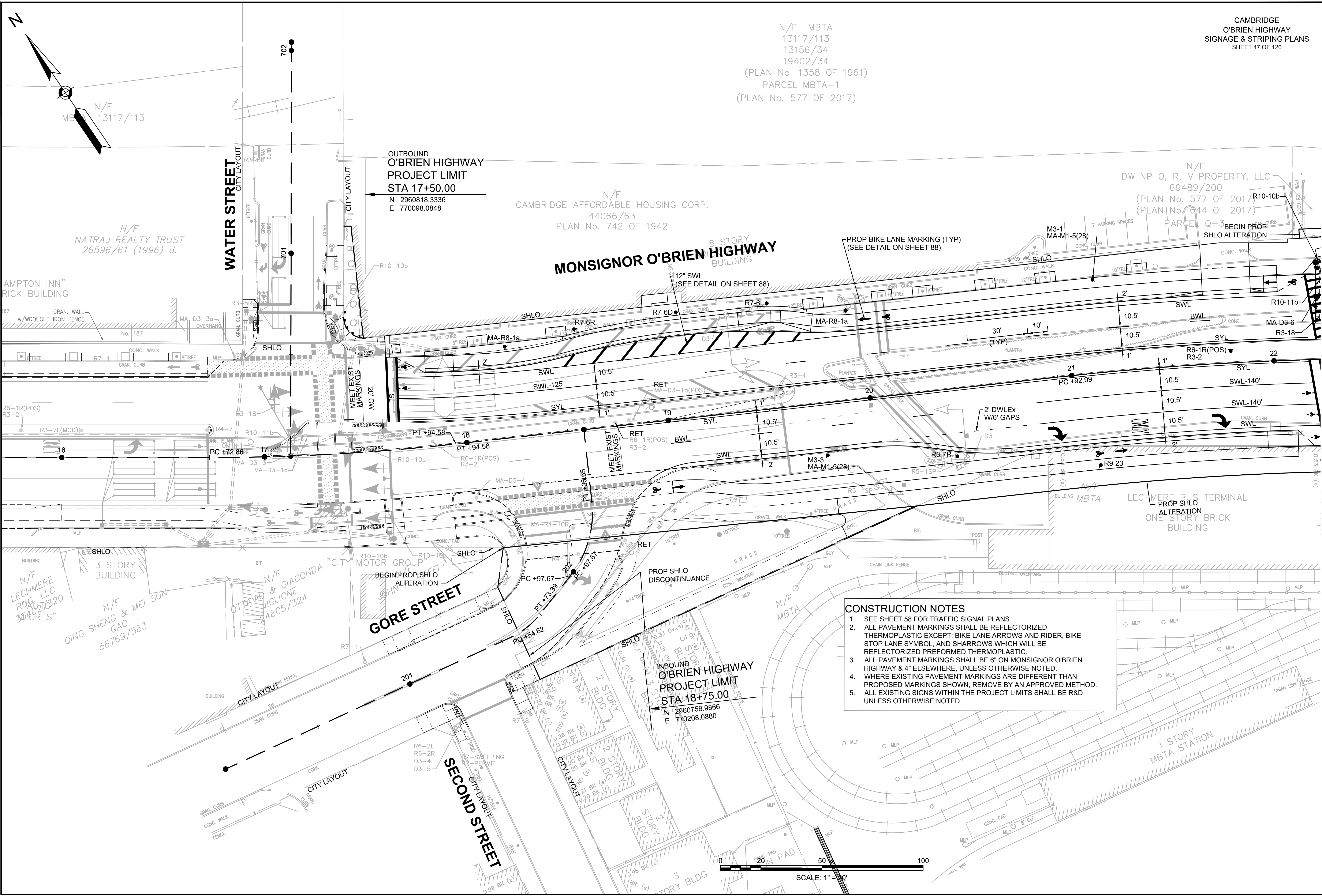
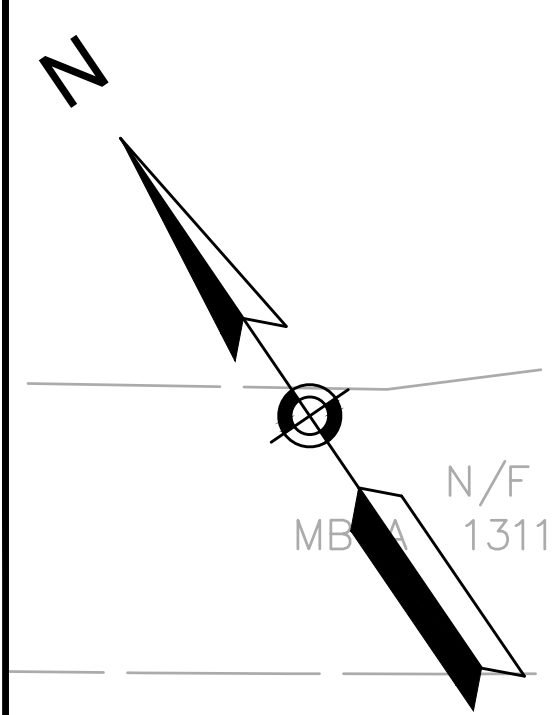
REVISIONS		
NO.	REVISION DESCRIPTION	DATE
1	MASS HIGHWAY COMMENTS	5/30/18
2	SURVEY UPDATE/UTILITY CONFLICT	7/31/18
8	GORE STREET CURB LINE REV	7/30/20



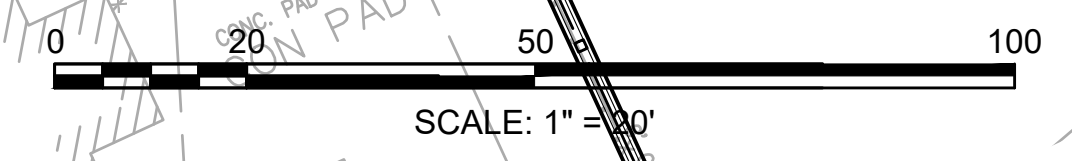
CONTINUED ON SHEET NO. 23

11554-PH-TSIG-REV/DWG Ploited on 31-Jul-2020 9:45 AM

N/F MBTA
13117/113
13156/34
19402/34
(PLAN No. 1358 OF 1961)
PARCEL MBTA-1
(PLAN No. 577 OF 2017)

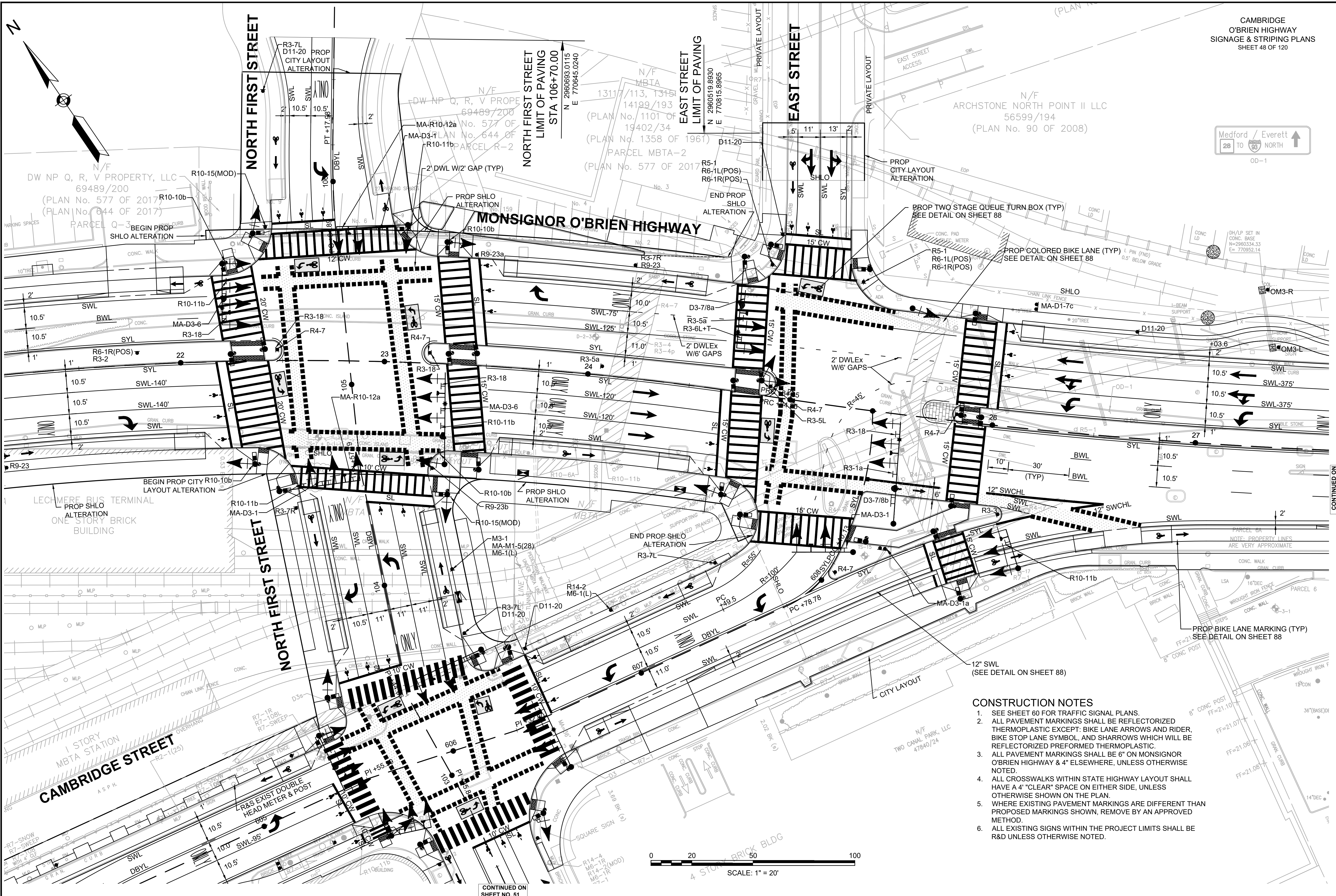


- CONSTRUCTION NOTES**
1. SEE SHEET 58 FOR TRAFFIC SIGNAL PLANS.
 2. ALL PAVEMENT MARKINGS SHALL BE REFLECTORIZED THERMOPLASTIC EXCEPT: BIKE LANE ARROWS AND RIDER, BIKE STOP LANE SYMBOL, AND SHARROWS WHICH WILL BE REFLECTORIZED PREFORMED THERMOPLASTIC.
 3. ALL PAVEMENT MARKINGS SHALL BE 6" ON MONSIGNOR O'BRIEN HIGHWAY & 4" ELSEWHERE, UNLESS OTHERWISE NOTED.
 4. WHERE EXISTING PAVEMENT MARKINGS ARE DIFFERENT THAN PROPOSED MARKINGS SHOWN, REMOVE BY AN APPROVED METHOD.
 5. ALL EXISTING SIGNS WITHIN THE PROJECT LIMITS SHALL BE R&D UNLESS OTHERWISE NOTED.



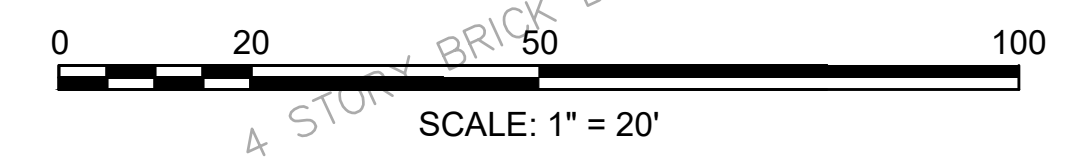
11554-TSIG.DWG
Plotted on 13-Jul-2021 12:05 PM

CONTINUED ON
SHEET NO. 48



CONSTRUCTION NOTES

1. SEE SHEET 60 FOR TRAFFIC SIGNAL PLANS.
2. ALL PAVEMENT MARKINGS SHALL BE REFLECTORIZED THERMOPLASTIC EXCEPT: BIKE LANE ARROWS AND RIDER, BIKE STOP LANE SYMBOL, AND SHARROWS WHICH WILL BE REFLECTORIZED PREFORMED THERMOPLASTIC.
3. ALL PAVEMENT MARKINGS SHALL BE 6" ON MONSIGNOR O'BRIEN HIGHWAY & 4" ELSEWHERE, UNLESS OTHERWISE NOTED.
4. ALL CROSSWALKS WITHIN STATE HIGHWAY LAYOUT SHALL HAVE A 4' "CLEAR" SPACE ON EITHER SIDE, UNLESS OTHERWISE SHOWN ON THE PLAN.
5. WHERE EXISTING PAVEMENT MARKINGS ARE DIFFERENT THAN PROPOSED MARKINGS SHOWN, REMOVE BY AN APPROVED METHOD.
6. ALL EXISTING SIGNS WITHIN THE PROJECT LIMITS SHALL BE R&D UNLESS OTHERWISE NOTED.

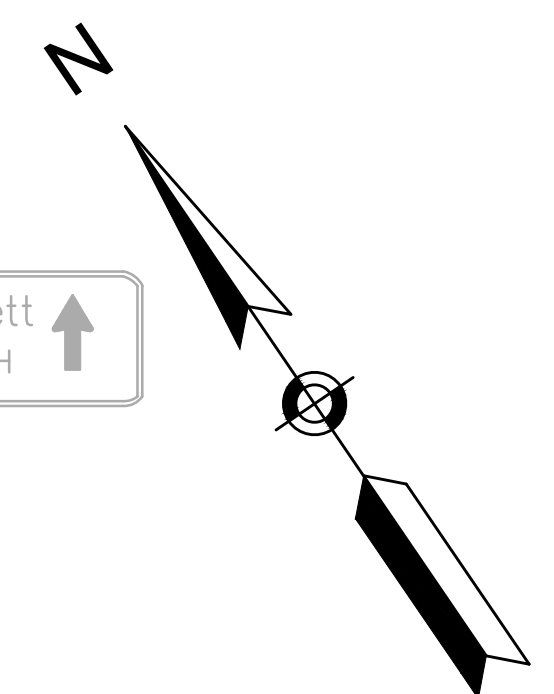
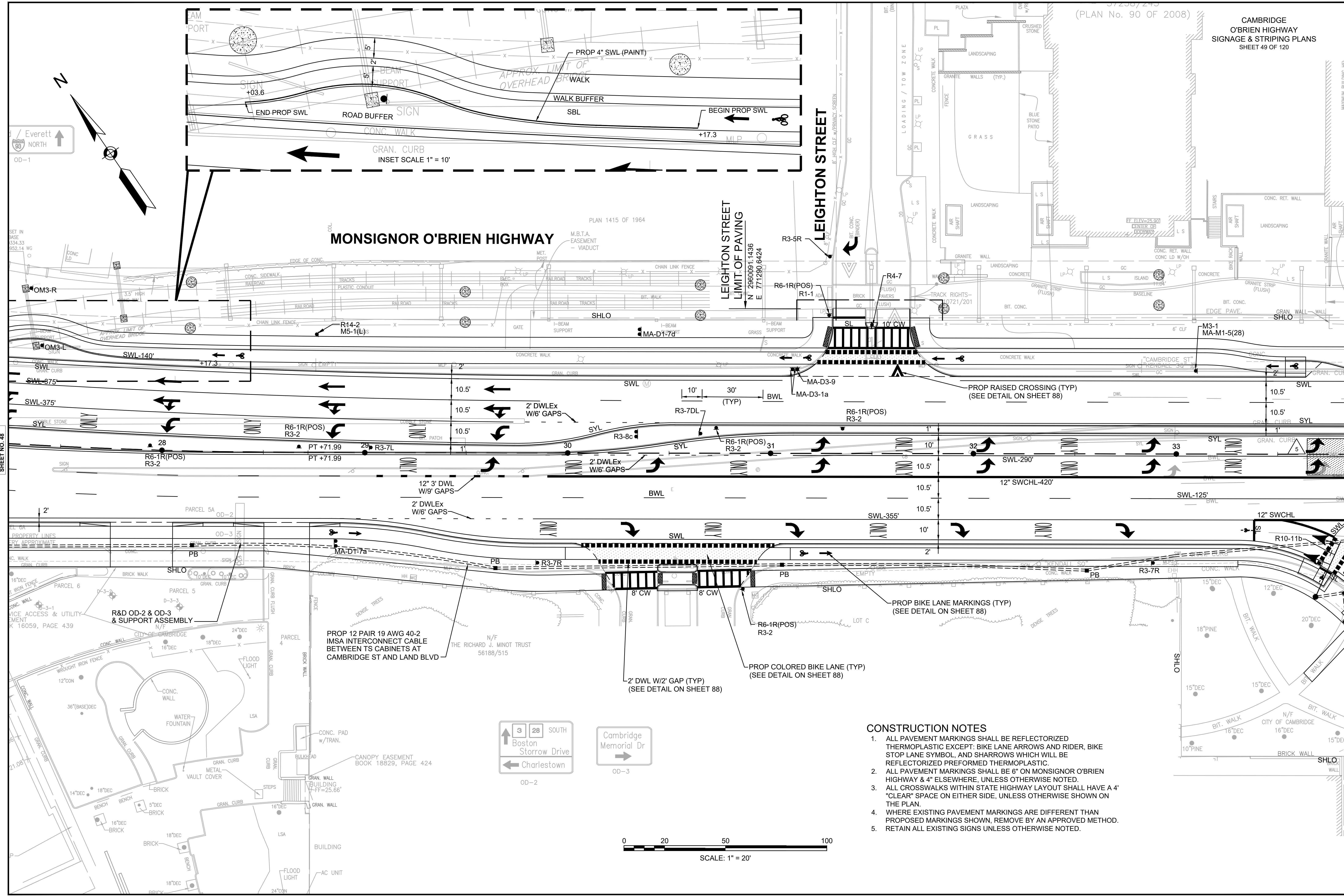


CONTINUED ON SHEET NO. 47

CONTINUED ON SHEET NO. 49

CONTINUED ON SHEET NO. 51

372307243
(PLAN No. 90 OF 2008)



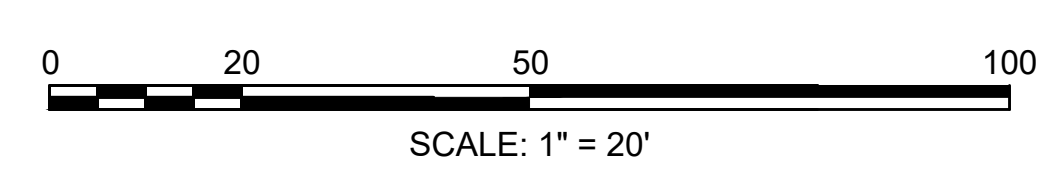
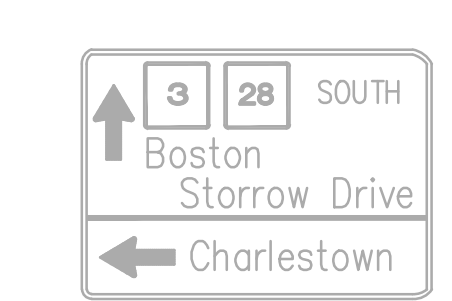
Everett
NORTH
↑
OD-1

MONSIGNOR O'BRIEN HIGHWAY

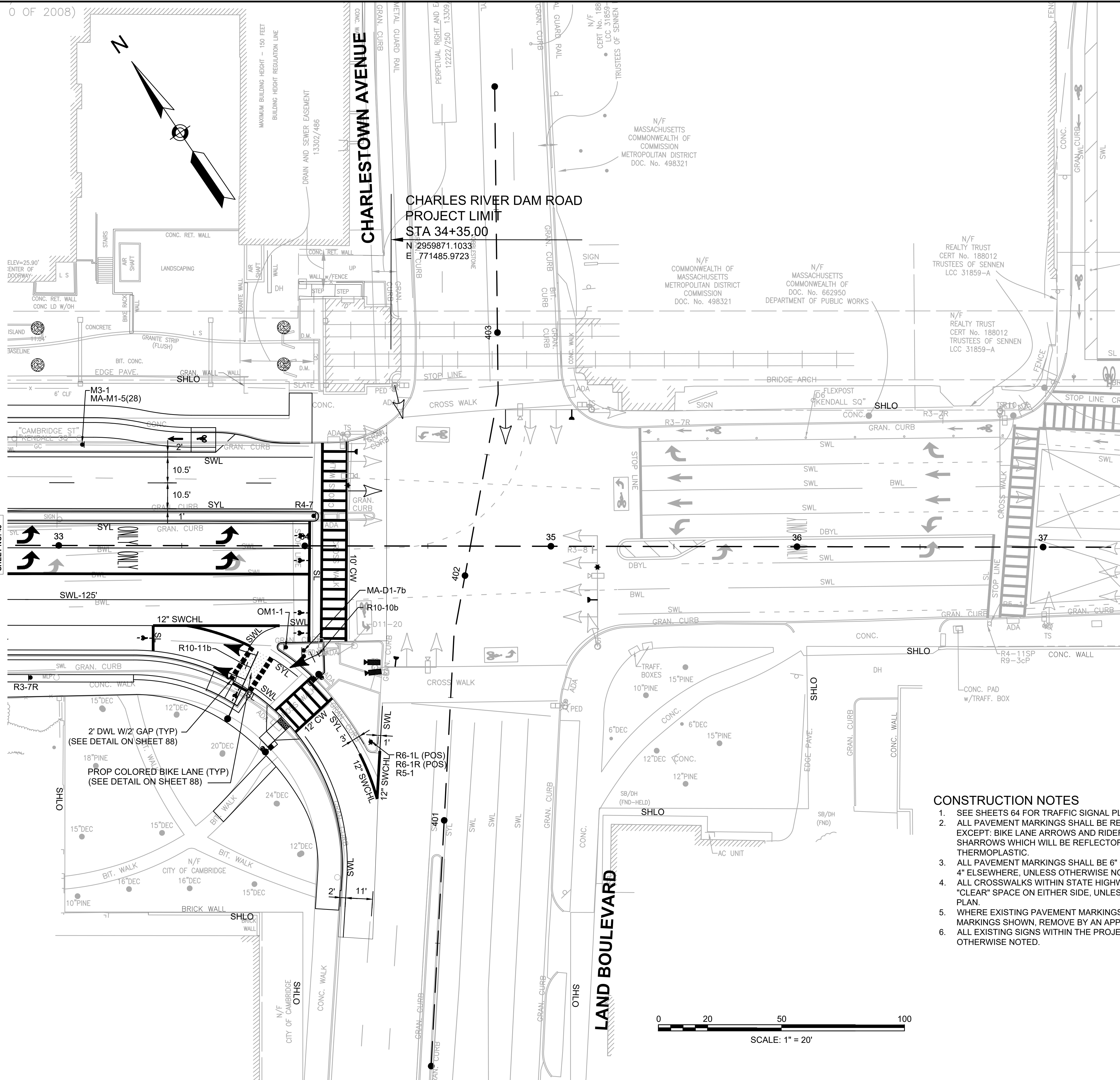
LEIGHTON STREET
LIMIT OF PAVING
N 2960891.1436
E 771290.6424

CONTINUED ON
SHEET NO. 48

CONTINUED ON
SHEET NO. 50



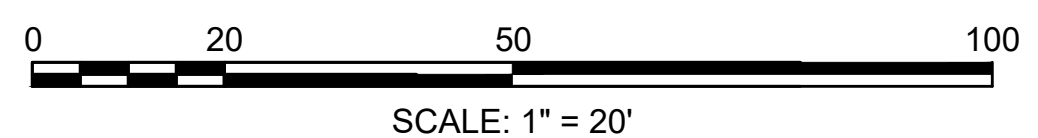
- CONSTRUCTION NOTES**
1. ALL PAVEMENT MARKINGS SHALL BE REFLECTORIZED THERMOPLASTIC EXCEPT: BIKE LANE ARROWS AND RIDER, BIKE STOP LANE SYMBOL, AND SHARROWS WHICH WILL BE REFLECTORIZED PREFORMED THERMOPLASTIC.
 2. ALL PAVEMENT MARKINGS SHALL BE 6" ON MONSIGNOR O'BRIEN HIGHWAY & 4" ELSEWHERE, UNLESS OTHERWISE NOTED.
 3. ALL CROSSWALKS WITHIN STATE HIGHWAY LAYOUT SHALL HAVE A 4" "CLEAR" SPACE ON EITHER SIDE, UNLESS OTHERWISE SHOWN ON THE PLAN.
 4. WHERE EXISTING PAVEMENT MARKINGS ARE DIFFERENT THAN PROPOSED MARKINGS SHOWN, REMOVE BY AN APPROVED METHOD.
 5. RETAIN ALL EXISTING SIGNS UNLESS OTHERWISE NOTED.

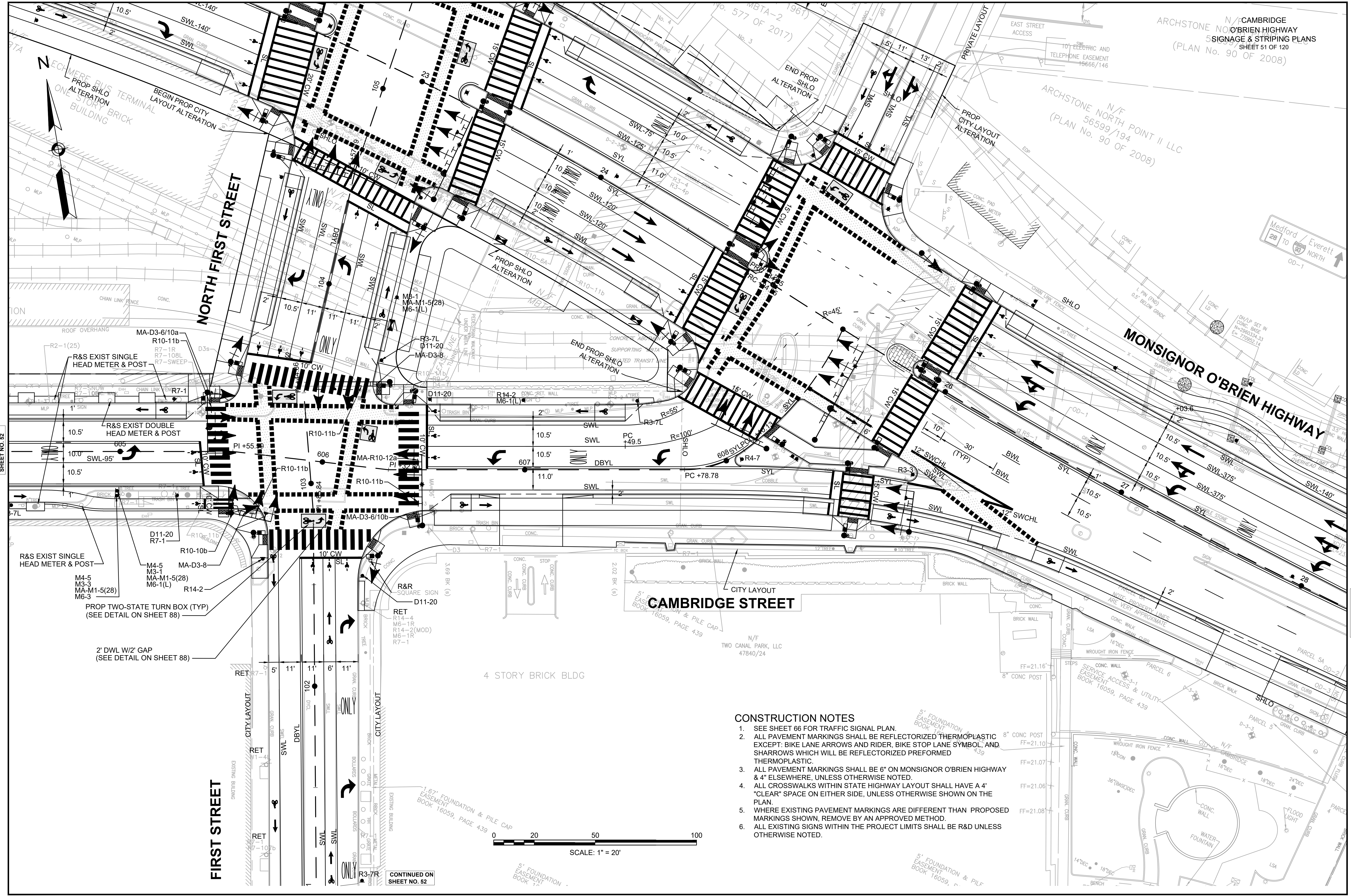


CHARLES RIVER DAM ROAD
PROJECT LIMIT
STA 34+35.00

CONTINUED ON
SHEET NO. 49

- CONSTRUCTION NOTES**
- SEE SHEETS 64 FOR TRAFFIC SIGNAL PLANS.
 - ALL PAVEMENT MARKINGS SHALL BE REFLECTORIZED THERMOPLASTIC EXCEPT: BIKE LANE ARROWS AND RIDER, BIKE STOP LANE SYMBOL, AND SHARROWS WHICH WILL BE REFLECTORIZED PREFORMED THERMOPLASTIC.
 - ALL PAVEMENT MARKINGS SHALL BE 6" ON MONSIGNOR O'BRIEN HIGHWAY & 4" ELSEWHERE, UNLESS OTHERWISE NOTED.
 - ALL CROSSWALKS WITHIN STATE HIGHWAY LAYOUT SHALL HAVE A 4' "CLEAR" SPACE ON EITHER SIDE, UNLESS OTHERWISE SHOWN ON THE PLAN.
 - WHERE EXISTING PAVEMENT MARKINGS ARE DIFFERENT THAN PROPOSED MARKINGS SHOWN, REMOVE BY AN APPROVED METHOD.
 - ALL EXISTING SIGNS WITHIN THE PROJECT LIMITS SHALL BE R&D UNLESS OTHERWISE NOTED.



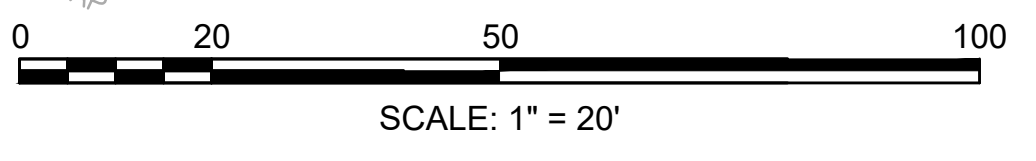


CONTINUED ON SHEET NO. 52

CONTINUED ON SHEET NO. 49

CONSTRUCTION NOTES

1. SEE SHEET 66 FOR TRAFFIC SIGNAL PLAN.
2. ALL PAVEMENT MARKINGS SHALL BE REFLECTORIZED THERMOPLASTIC EXCEPT: BIKE LANE ARROWS AND RIDER, BIKE STOP LANE SYMBOL, AND SHARROWS WHICH WILL BE REFLECTORIZED PREFORMED THERMOPLASTIC.
3. ALL PAVEMENT MARKINGS SHALL BE 6" ON MONSIGNOR O'BRIEN HIGHWAY & 4" ELSEWHERE, UNLESS OTHERWISE NOTED.
4. ALL CROSSWALKS WITHIN STATE HIGHWAY LAYOUT SHALL HAVE A 4" "CLEAR" SPACE ON EITHER SIDE, UNLESS OTHERWISE SHOWN ON THE PLAN.
5. WHERE EXISTING PAVEMENT MARKINGS ARE DIFFERENT THAN PROPOSED MARKINGS SHOWN, REMOVE BY AN APPROVED METHOD.
6. ALL EXISTING SIGNS WITHIN THE PROJECT LIMITS SHALL BE R&D UNLESS OTHERWISE NOTED.



FIRST STREET

CAMBRIDGE STREET

MONSIGNOR O'BRIEN HIGHWAY

4 STORY BRICK BLDG

N/F TWO CANAL PARK, LLC
 47840/24

CONTINUED ON SHEET NO. 52

5' FOUNDATION & PILE CAP EASEMENT BOOK 16059, PAGE 439

1.67' FOUNDATION & PILE CAP EASEMENT BOOK 16059, PAGE 439

5' FOUNDATION & PILE CAP EASEMENT BOOK 16059, PAGE 439

5' FOUNDATION & PILE CAP EASEMENT BOOK 16059, PAGE 439

5' FOUNDATION & PILE CAP EASEMENT BOOK 16059, PAGE 439

5' FOUNDATION & PILE CAP EASEMENT BOOK 16059, PAGE 439

5' FOUNDATION & PILE CAP EASEMENT BOOK 16059, PAGE 439

5' FOUNDATION & PILE CAP EASEMENT BOOK 16059, PAGE 439

5' FOUNDATION & PILE CAP EASEMENT BOOK 16059, PAGE 439

5' FOUNDATION & PILE CAP EASEMENT BOOK 16059, PAGE 439

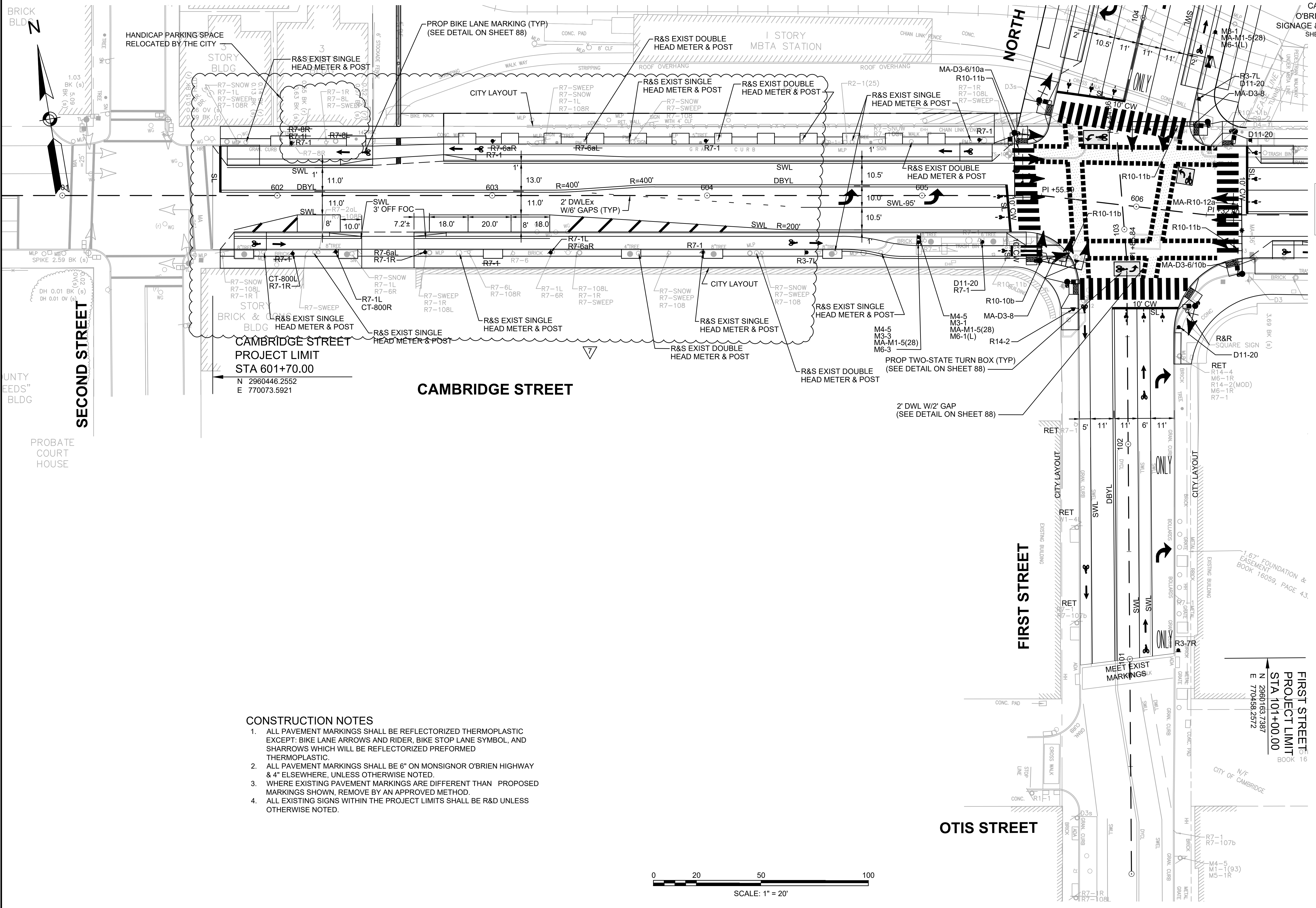
5' FOUNDATION & PILE CAP EASEMENT BOOK 16059, PAGE 439

5' FOUNDATION & PILE CAP EASEMENT BOOK 16059, PAGE 439

5' FOUNDATION & PILE CAP EASEMENT BOOK 16059, PAGE 439

5' FOUNDATION & PILE CAP EASEMENT BOOK 16059, PAGE 439

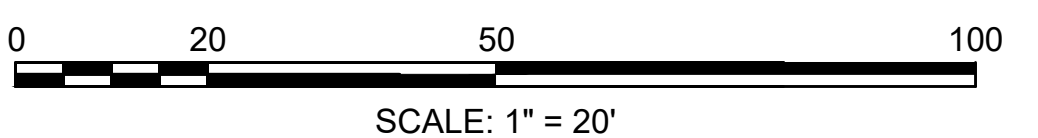
5' FOUNDATION & PILE CAP EASEMENT BOOK 16059, PAGE 439



CONTINUED ON
SHEET NO. 51

CONSTRUCTION NOTES

1. ALL PAVEMENT MARKINGS SHALL BE REFLECTORIZED THERMOPLASTIC EXCEPT: BIKE LANE ARROWS AND RIDER, BIKE STOP LANE SYMBOL, AND SHARROWS WHICH WILL BE REFLECTORIZED PREFORMED THERMOPLASTIC.
2. ALL PAVEMENT MARKINGS SHALL BE 6" ON MONSIGNOR O'BRIEN HIGHWAY & 4" ELSEWHERE, UNLESS OTHERWISE NOTED.
3. WHERE EXISTING PAVEMENT MARKINGS ARE DIFFERENT THAN PROPOSED MARKINGS SHOWN, REMOVE BY AN APPROVED METHOD.
4. ALL EXISTING SIGNS WITHIN THE PROJECT LIMITS SHALL BE R&D UNLESS OTHERWISE NOTED.



FIRST STREET
PROJECT LIMIT
STA 101+00.00
BOOK 16
N 2960163.7387
E 770458.2572

1.67' FOUNDATION & EASEMENT BOOK 16059, PAGE 43.

N/F
CITY OF CAMBRIDGE

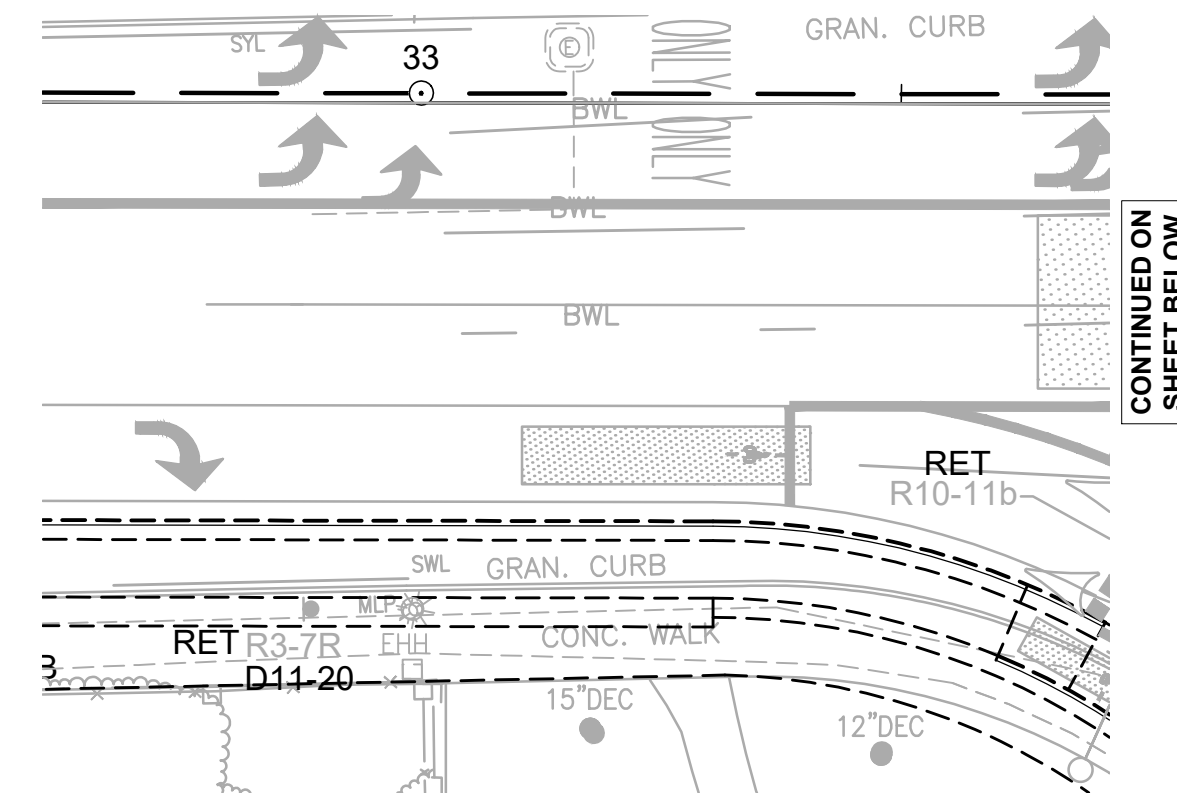
MONSIGNOR O'BRIEN HWY
PROJECT LIMIT
STA 34+15
N 2959882.3938
E 771469.4640

CHARLESTOWN AVENUE

FLEXPOST DATA TABLE	
LOCATION	
STA. 35+31.89, 30.64 RT Align - O'Brien Hwy	STA. 500+59.28, 15.64 LT Align - Museum Way
STA. 35+43.88, 43.90 LT Align - O'Brien Hwy	STA. 500+69.78, 15.50 LT Align - Museum Way
STA. 36+81.36, 27.48 RT Align - O'Brien Hwy	STA. 500+74.53, 15.50 LT Align - Museum Way
STA. 36+81.99, 46.69 RT Align - O'Brien Hwy	STA. 500+81.84, 14.50 RT Align - Museum Way
STA. 37+01.53, 27.09 RT Align - O'Brien Hwy	STA. 500+96.05, 14.50 LT Align - Museum Way
STA. 37+13.92, 51.14 LT Align - O'Brien Hwy	STA. 404+38.65, 30.89 LT Align - Land Blvd
STA. 37+60.44, 23.29 RT Align - O'Brien Hwy	
STA. 37+90.25, 19.81 RT Align - O'Brien Hwy	
STA. 38+01.97, 35.84 LT Align - O'Brien Hwy	

12" SWL
SEE DETAIL ON SHEET 25

MUSEUM WAY
PROJECT LIMIT
STA 502+00
N 2959866.8560
E 771846.4591



CHARLES RIVER DAM ROAD
PROJECT LIMIT
STA 38+55
N 2959634.0028
E 771832.6471

CHARLES RIVER DAM ROAD

PROP BIKE BOX
SEE DETAIL ON SHEET 25

PROP FLEXPOST (TYP)
SEE DETAIL ON SHEET 25

PROP COLORED BIKE LANE (TYP)
SEE DETAIL ON SHEET 25

2' WIDE DASHED WHITE LINE -
2' WITH 2' GAP (TYP)
(SEE DETAIL ON SHEET 26)

PROP REFLECTORIZED
DELINEATORS POSTS 20' O.C. (TYP)

CONC. WALK
w/CHAIN LINK FENCE

CONC. CURB

SWL

BWL

12" DWL-65'

10.5'

10.5'

10.5'

10.5'

6.5'

CONC. WALK

CONC. CURB

SWL

BWL

12" DWL-65'

10.5'

10.5'

10.5'

6.5'

CONC. WALK

CONC. CURB

SWL

BWL

12" DWL-65'

10.5'

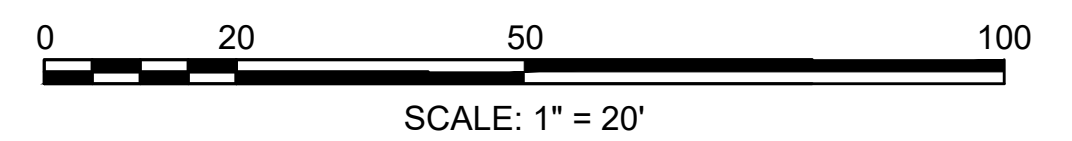
10.5'

6.5'

CONC. WALK

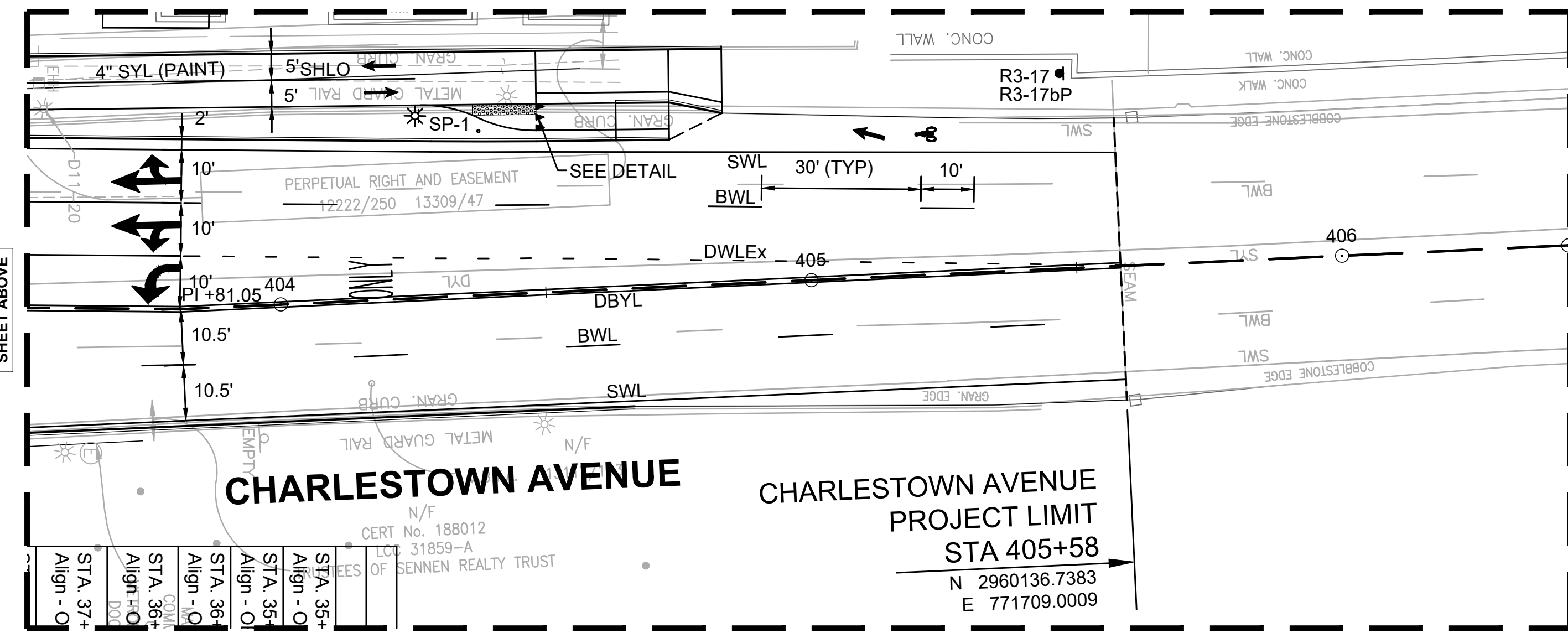
CONC. CURB

SWL



CONSTRUCTION NOTES

- SEE SHEET 11 FOR TRAFFIC SIGNAL PLANS.
- ALL CROSSWALKS WITHIN STATE HIGHWAY LAYOUT SHALL HAVE A 4" "CLEAR" SPACE ON EITHER SIDE, UNLESS OTHERWISE SHOWN ON THE PLAN.
- ALL PAVEMENT MARKINGS SHALL BE REFLECTORIZED THERMOPLASTIC EXCEPT: BIKE LANE ARROWS AND RIDER, BIKE STOP LANE SYMBOL, AND SHARROWS WHICH WILL BE REFLECTORIZED PREFORMED THERMOPLASTIC.
- ALL PAVEMENT MARKINGS SHALL BE 6", UNLESS OTHERWISE NOTED.
- WHERE EXISTING PAVEMENT MARKINGS ARE DIFFERENT THAN PROPOSED MARKINGS SHOWN, REMOVE BY AN APPROVED METHOD.
- ALL EXISTING SIGNS WITHIN THE PROJECT LIMITS SHALL BE R&D UNLESS OTHERWISE NOTED.



CHARLESTOWN AVENUE

CHARLESTOWN AVENUE
PROJECT LIMIT
STA 405+58
N 2960136.7383
E 771709.0009

STA. 37+4	Align - O
STA. 38+6	Align - O
STA. 39+0	Align - O
STA. 39+4	Align - O
STA. 39+8	Align - O
STA. 40+2	Align - O
STA. 40+6	Align - O
STA. 41+0	Align - O
STA. 41+4	Align - O
STA. 41+8	Align - O
STA. 42+2	Align - O
STA. 42+6	Align - O
STA. 43+0	Align - O
STA. 43+4	Align - O
STA. 43+8	Align - O
STA. 44+2	Align - O
STA. 44+6	Align - O
STA. 45+0	Align - O
STA. 45+4	Align - O
STA. 45+8	Align - O
STA. 46+2	Align - O
STA. 46+6	Align - O
STA. 47+0	Align - O
STA. 47+4	Align - O
STA. 47+8	Align - O
STA. 48+2	Align - O
STA. 48+6	Align - O
STA. 49+0	Align - O
STA. 49+4	Align - O
STA. 49+8	Align - O
STA. 50+2	Align - O
STA. 50+6	Align - O
STA. 51+0	Align - O
STA. 51+4	Align - O
STA. 51+8	Align - O
STA. 52+2	Align - O
STA. 52+6	Align - O
STA. 53+0	Align - O
STA. 53+4	Align - O
STA. 53+8	Align - O
STA. 54+2	Align - O
STA. 54+6	Align - O
STA. 55+0	Align - O
STA. 55+4	Align - O
STA. 55+8	Align - O
STA. 56+2	Align - O
STA. 56+6	Align - O
STA. 57+0	Align - O
STA. 57+4	Align - O
STA. 57+8	Align - O
STA. 58+2	Align - O
STA. 58+6	Align - O
STA. 59+0	Align - O
STA. 59+4	Align - O
STA. 59+8	Align - O
STA. 60+2	Align - O
STA. 60+6	Align - O
STA. 61+0	Align - O
STA. 61+4	Align - O
STA. 61+8	Align - O
STA. 62+2	Align - O
STA. 62+6	Align - O
STA. 63+0	Align - O
STA. 63+4	Align - O
STA. 63+8	Align - O
STA. 64+2	Align - O
STA. 64+6	Align - O
STA. 65+0	Align - O
STA. 65+4	Align - O
STA. 65+8	Align - O
STA. 66+2	Align - O
STA. 66+6	Align - O
STA. 67+0	Align - O
STA. 67+4	Align - O
STA. 67+8	Align - O
STA. 68+2	Align - O
STA. 68+6	Align - O
STA. 69+0	Align - O
STA. 69+4	Align - O
STA. 69+8	Align - O
STA. 70+2	Align - O
STA. 70+6	Align - O
STA. 71+0	Align - O
STA. 71+4	Align - O
STA. 71+8	Align - O
STA. 72+2	Align - O
STA. 72+6	Align - O
STA. 73+0	Align - O
STA. 73+4	Align - O
STA. 73+8	Align - O
STA. 74+2	Align - O
STA. 74+6	Align - O
STA. 75+0	Align - O
STA. 75+4	Align - O
STA. 75+8	Align - O
STA. 76+2	Align - O
STA. 76+6	Align - O
STA. 77+0	Align - O
STA. 77+4	Align - O
STA. 77+8	Align - O
STA. 78+2	Align - O
STA. 78+6	Align - O
STA. 79+0	Align - O
STA. 79+4	Align - O
STA. 79+8	Align - O
STA. 80+2	Align - O
STA. 80+6	Align - O
STA. 81+0	Align - O
STA. 81+4	Align - O
STA. 81+8	Align - O
STA. 82+2	Align - O
STA. 82+6	Align - O
STA. 83+0	Align - O
STA. 83+4	Align - O
STA. 83+8	Align - O
STA. 84+2	Align - O
STA. 84+6	Align - O
STA. 85+0	Align - O
STA. 85+4	Align - O
STA. 85+8	Align - O
STA. 86+2	Align - O
STA. 86+6	Align - O
STA. 87+0	Align - O
STA. 87+4	Align - O
STA. 87+8	Align - O
STA. 88+2	Align - O
STA. 88+6	Align - O
STA. 89+0	Align - O
STA. 89+4	Align - O
STA. 89+8	Align - O
STA. 90+2	Align - O
STA. 90+6	Align - O
STA. 91+0	Align - O
STA. 91+4	Align - O
STA. 91+8	Align - O
STA. 92+2	Align - O
STA. 92+6	Align - O
STA. 93+0	Align - O
STA. 93+4	Align - O
STA. 93+8	Align - O
STA. 94+2	Align - O
STA. 94+6	Align - O
STA. 95+0	Align - O
STA. 95+4	Align - O
STA. 95+8	Align - O
STA. 96+2	Align - O
STA. 96+6	Align - O
STA. 97+0	Align - O
STA. 97+4	Align - O
STA. 97+8	Align - O
STA. 98+2	Align - O
STA. 98+6	Align - O
STA. 99+0	Align - O
STA. 99+4	Align - O
STA. 99+8	Align - O
STA. 100+2	Align - O
STA. 100+6	Align - O
STA. 101+0	Align - O
STA. 101+4	Align - O
STA. 101+8	Align - O
STA. 102+2	Align - O
STA. 102+6	Align - O
STA. 103+0	Align - O
STA. 103+4	Align - O
STA. 103+8	Align - O
STA. 104+2	Align - O
STA. 104+6	Align - O
STA. 105+0	Align - O
STA. 105+4	Align - O
STA. 105+8	Align - O
STA. 106+2	Align - O
STA. 106+6	Align - O
STA. 107+0	Align - O
STA. 107+4	Align - O
STA. 107+8	Align - O
STA. 108+2	Align - O
STA. 108+6	Align - O
STA. 109+0	Align - O
STA. 109+4	Align - O
STA. 109+8	Align - O
STA. 110+2	Align - O
STA. 110+6	Align - O
STA. 111+0	Align - O
STA. 111+4	Align - O
STA. 111+8	Align - O
STA. 112+2	Align - O
STA. 112+6	Align - O
STA. 113+0	Align - O
STA. 113+4	Align - O
STA. 113+8	Align - O
STA. 114+2	Align - O
STA. 114+6	Align - O
STA. 115+0	Align - O
STA. 115+4	Align - O
STA. 115+8	Align - O
STA. 116+2	Align - O
STA. 116+6	Align - O
STA. 117+0	Align - O
STA. 117+4	Align - O
STA. 117+8	Align - O
STA. 118+2	Align - O
STA. 118+6	Align - O
STA. 119+0	Align - O
STA. 119+4	Align - O
STA. 119+8	Align - O
STA. 120+2	Align - O
STA. 120+6	Align - O
STA. 121+0	Align - O
STA. 121+4	Align - O
STA. 121+8	Align - O
STA. 122+2	Align - O
STA. 122+6	Align - O
STA. 123+0	Align - O
STA. 123+4	Align - O
STA. 123+8	Align - O
STA. 124+2	Align - O
STA. 124+6	Align - O
STA. 125+0	Align - O
STA. 125+4	Align - O
STA. 125+8	Align - O
STA. 126+2	Align - O
STA. 126+6	Align - O
STA. 127+0	Align - O
STA. 127+4	Align - O
STA. 127+8	Align - O
STA. 128+2	Align - O
STA. 128+6	Align - O
STA. 129+0	Align - O
STA. 129+4	Align - O
STA. 129+8	Align - O
STA. 130+2	Align - O
STA. 130+6	Align - O
STA. 131+0	Align - O
STA. 131+4	Align - O
STA. 131+8	Align - O
STA. 132+2	Align - O
STA. 132+6	Align - O
STA. 133+0	Align - O
STA. 133+4	Align - O
STA. 133+8	Align - O
STA. 134+2	Align - O
STA. 134+6	Align - O
STA. 135+0	Align - O
STA. 135+4	Align - O
STA. 135+8	Align - O
STA. 136+2	Align - O
STA. 136+6	Align - O
STA. 137+0	Align - O
STA. 137+4	Align - O
STA. 137+8	Align - O
STA. 138+2	Align - O
STA. 138+6	Align - O
STA. 139+0	Align - O
STA. 139+4	Align - O
STA. 139+8	Align - O
STA. 140+2	Align - O
STA. 140+6	Align - O
STA. 141+0	Align - O
STA. 141+4	Align - O
STA. 141+8	Align - O
STA. 142+2	Align - O
STA. 142+6	Align - O
STA. 143+0	Align - O
STA. 143+4	Align - O
STA. 143+8	Align - O
STA. 144+2	Align - O
STA. 144+6	Align - O
STA. 145+0	Align - O
STA. 145+4	Align - O
STA. 145+8	Align - O
STA. 146+2	Align - O
STA. 146+6	Align - O
STA. 147+0	Align - O
STA. 147+4	Align - O
STA. 147+8	Align - O
STA. 148+2	Align - O
STA. 148+6	Align - O
STA. 149+0	Align - O
STA. 149+4	Align - O
STA. 149+8	Align - O
STA. 150+2	Align - O
STA. 150+6	Align - O
STA. 151+0	Align - O
STA. 151+4	Align - O
STA. 151+8	Align - O
STA. 152+2	Align - O
STA. 152+6	Align - O
STA. 153+0	Align - O
STA. 153+4	Align - O
STA. 153+8	Align - O
STA. 154+2	Align - O
STA. 154+6	Align - O
STA. 155+0	Align - O
STA. 155+4	Align - O
STA. 155+8	Align - O
STA. 156+2	Align - O
STA. 156+6	Align - O
STA. 157+0	Align - O
STA. 157+4	Align - O
STA. 157+8	Align - O
STA. 158+2	Align - O
STA. 158+6	Align - O
STA. 159+0	Align - O
STA. 159+4	Align - O
STA. 159+8	Align - O
STA	