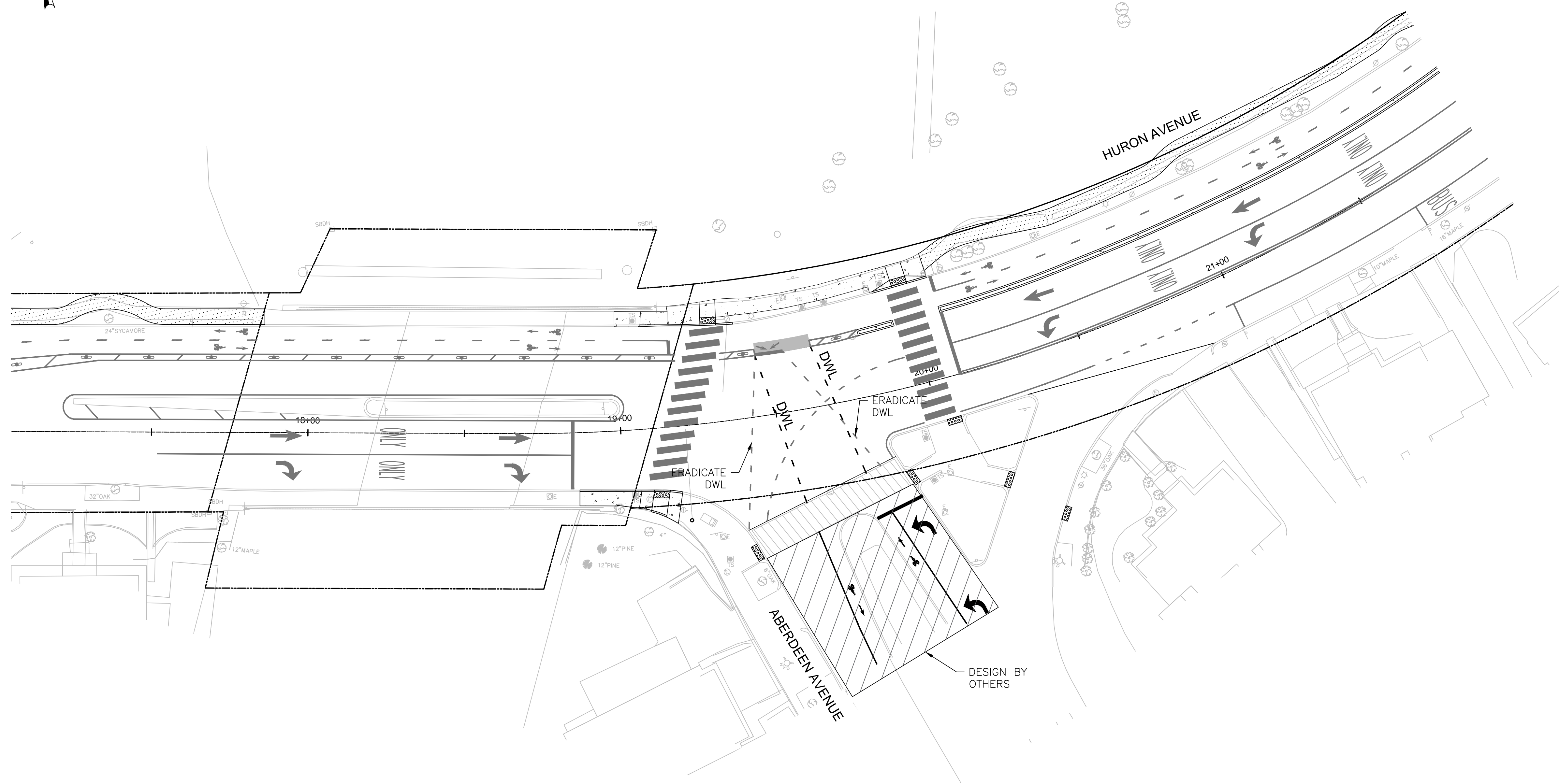


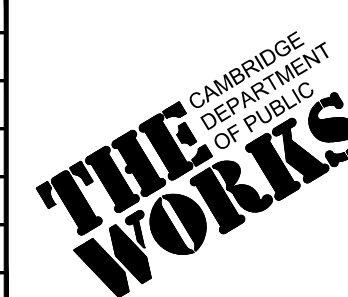
0 20 40  
SCALE: 1" = 20' SCALE IN FEET



**HATCH**  
27 Congress Street, Salem, MA 01970  
tel. 978-740-0096 www.hatch.com

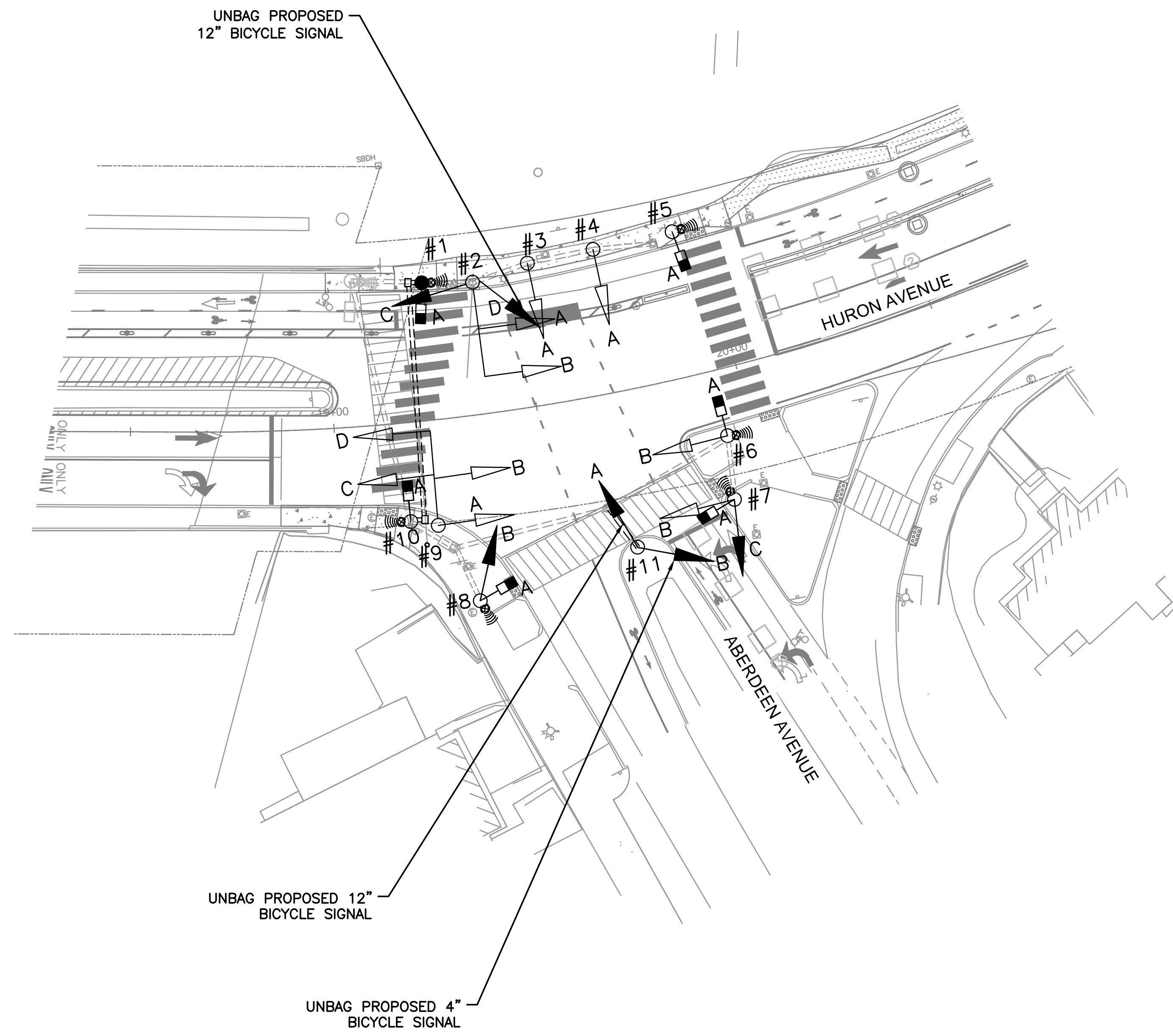
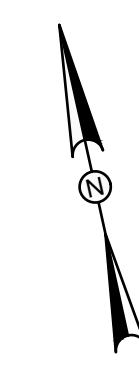
**TOOLE  
DESIGN**

Scale	AS NOTED			
Date	SEPTEMBER 2023			
Job No.	20170208.037A			
Designed by	SA			
Drawn by	SA			
Checked by	MLD	No.	Description	Date
Approved by	MLD		REVISIONS	

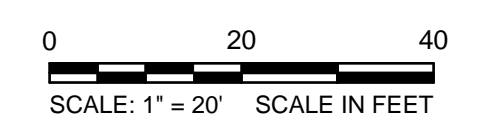


Client	CITY OF CAMBRIDGE, MASSACHUSETTS
Project	CHAPTER 90 CONTRACT 24 ROADWAY IMPROVEMENT PROJECT
Drawing	HURON AVE AT ABERDEEN

Sheet	-
File No.	7113



- LEGEND:**
- PROPOSED SIGNAL EQUIPMENT
  - EXISTING SIGNAL EQUIPMENT
  - PROPOSED APS PUSH BUTTON
  - EXISTING APS PUSH BUTTON
  - PROPOSED PEDESTRIAN INDICATION
  - EXISTING PEDESTRIAN INDICATION
  - EXISTING VEHICLE DETECTION



- NOTE:**
1. LOOP DETECTORS WILL BE ABANDONED.
  2. EXISTING CONDUIT LOCATION SHOWN IS APPROXIMATE.

				Scale	AS NOTED		Client	CITY OF CAMBRIDGE, MASSACHUSETTS	Sheet	-
				Date	SEPTEMBER 2023		Project	CHAPTER 90 CONTRACT 24 ROADWAY IMPROVEMENT PROJECT	File No.	7113
				Job No.	20170208.037A		Drawing	TRAFFIC SIGNAL PLANS - FUTURE CONCEPT		
				Designed by	SA					
				Drawn by	SA					
				Checked by	MLD		No.	Description	Date	
				Approved by	MLD					
								REVISIONS		

