

The Cambridge

2013-2014 EDITION

Life

Official Magazine
and Resource Guide

Brought to You by the City of Cambridge

AWARD-WINNING CITY



**RWJF ROADMAPS
TO HEALTH
PRIZE WINNER**



Also in this issue:

CDD Update: Vibrant and Sustainable Cambridge
Central Square Cultural District | Mobile Cambridge
Public Works Projects Update | Healthy City
Promoting Kindness in Our Preschools
AND Lending Veterans a Helping Hand



MESSAGE FROM THE CITY MANAGER

Since our last issue, a few noteworthy milestones have occurred. Cambridge was one of six winners nationwide to receive an inaugural *Robert Wood Johnson Foundation (RWJF) Roadmaps to Health Prize* earlier this year. The prize honors outstanding community partnerships across the U.S. that are helping residents lead better and healthier lives. Cambridge was honored for its achievements in the areas of promoting healthy eating and physical activity, strengthening families, progressive urban planning and integration of public health within the Cambridge Health Alliance health care model. Learn more in our cover story.

The Cambridge Commission for Persons with Disabilities received an Organization of the Year Award from Cambridge Community Television for making the best use of their services to create public service announcements that bring awareness to disability-related issues.

In January, the City of Cambridge received an award from Massachusetts Municipal Association for best Municipal Website in Massachusetts in its population category. In this issue, learn more about our new mobile website (scheduled to launch in late May), city social media efforts and other services to keep you informed and connected on the go.

In Oct. 2012, Central Square was selected by Massachusetts Cultural Council as one of 17 state-designated Cultural Districts. Read more in this issue. Cambridge was also recently listed in ArtPlace's Top 44 Metropolitan Areas Where Arts Play a Key Role.

Cambridge was again named one of the 100 Best Communities for Young People for the sixth time by America's Promise Alliance and ING U.S. Read about skills Cambridge Preschoolers learn in one of our stories in this issue.

In 2013, the City of Cambridge won an Excellence in Commuter Options Award for its innovation in reaching out to employees in advocating for sustainable commuting. The National Arbor Day Foundation recognized Cambridge with its Tree City USA award for the 20th consecutive year, as well as its more prestigious Growth Award for the fifth consecutive year.



NortonPhotography.com

Robert W. Healy
City Manager

This issue of *The Cambridge Life* features project updates and initiatives from our Community Development and Public Works departments, as well as ways in which our Veterans' Services Department lends a helping hand.

I will be retiring at the end of the FY13 Fiscal Year and it has been my greatest honor and pleasure serving the citizens of this incredible city for these past 39 years.

Sincerely,

A handwritten signature in blue ink, which appears to read "Robert W. Healy". The signature is fluid and cursive.

Robert W. Healy
City Manager



Editor's Note: On July 1, 2013 Deputy City Manager Richard C. Rossi will take over as City Manager and Public Works Commissioner Lisa Peterson will take over as Deputy City Manager.

2013 - 2014 EDITION



Photos above: Arts organizations like Central Square Theater contribute to the designation of Central Square as one of 17 state-designated Cultural Districts; Developments such as Cambridge Research Park re-energize eastern Cambridge; King Open preschoolers prepare to visit the Food for Free pantry.

Cover: The hard work under way to make Cambridge a healthy city has gained national attention, including a Robert Wood Johnson Foundation Roadmaps to Health Prize. Learn more on page 8.

2 Message from the City Manager

3 Table of Contents

FEATURES

4 Central Square Cultural District Where art, science, technology, education and community meet

5 Veterans' Services Lending a helping hand

6 CDD Update Vibrant and sustainable Cambridge

8 Cambridge's Work to Create a Healthy City Gaining national attention

10 Promoting Kindness Preschoolers learn social and emotional skills and help their community

12 Mobile Cambridge Keeping you connected

13 Public Works City projects update

REFERENCE

14 For New City Residents At-a-glance info. on moving van permits, voter registration and more

14 Utilities Cable, Electricity/Gas, Sewer, Telephone and Water

15 Cambridge City Government Contact Info. for City Hall, City Manager, City Council and the Mayor

15 Useful Phone Numbers City Info. Lines and Departments

16 Cambridge Structure Organizational Chart, Political System, City Ordinances

17 Voting

17 Rights and Resources

18 Certificates, Licenses, Permits & Taxes

19 Traffic, Parking, and Transportation Resident Parking Permits, Snow Emergencies and Moving Van Permits

19 Public Works Street Cleaning, Trash Collection and Recycling

20 Community Development Neighborhood Planning, Environment, Economic Development and Housing

20 Business Resources

21 Human Services

22 Children, Youth and Family Services

23 Schools

24 Health Hospitals, Cambridge Health Alliance Services

25 Public Safety

25 Parks, Recreation and Conservation

26 Libraries

27 Public Transportation

27 Registry of Motor Vehicles

27 Transportation Resources

27 Post Office

28 Cambridge Culture

Arts and History, Museums, Galleries, Theaters and Community TV

29 Community Organizations

Services, Volunteer Opportunities

30-31 Cambridge Events

Editor

Ini Tomeu
Public Information Officer,
City of Cambridge
617-349-4339
itomeu@cambridgema.gov

Publisher

Lucie Stites, Avrio Publishing
lucie@avriopublishing.com

The Cambridge Life
is published for the
City of Cambridge
by Avrio Publishing
www.avriopublishing.com

The Cambridge Life is a free publication brought to you by the Office of the City Manager. It is published annually in May. Avrio Publishing verifies the accuracy of the information provided to the best of the publisher's ability. Avrio Publishing and the City of Cambridge assume no liability for loss or damage, errors or omissions. No part of this publication may be reprinted without written permission. © 2013 Avrio Publishing

WELCOME to the CENTRAL SQUARE CULTURAL DISTRICT

where art, science, technology, education and community meet | www.c2culture.com

CENTRAL SQUARE CULTURAL DISTRICT

In late 2012, Central Square, Cambridge was selected by Massachusetts Cultural Council as one of 17 state-designated Cultural Districts.

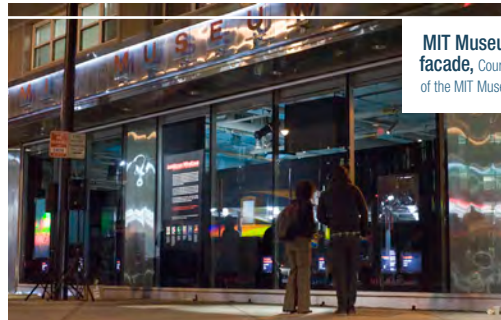
Home to a mix of small, funky independently-owned shops, creative start-ups and larger, well-established businesses and corporations, Central Square has long been a dynamic and exciting place where arts and culture thrive. Residents and visitors to the Central Square Cultural District experience world-class public art, resident working artists and artists' open studios, anchor arts organizations like Central Square Theater, CCTV, the MIT Museum and Dance Complex as well as ethnic cafes, restaurants and leading educational institutions like Cambridge College and MIT.

Each year, Central Square hosts a number of large cultural events that reflect the diversity of the District, including Cambridge Science Festival, Cambridge River Festival, Together Festival, Central Square World's Fair, Cambridge Carnival and City Dance Party. Together, these events attract annual audience visitation to Central Square in excess of 500,000.

In describing the program and designated Cultural Districts, Massachusetts Cultural Council (MCC) Executive Director, Anita Walker, explains that "Each community is rich with remarkable cultural treasures unique to its location, history and residents, with great potential for further cultural and economic growth." MCC is dedicated to working with Central Square and the other state Cultural Districts to build brand recognition and increased visitation and economic vitality through the development of physical district signage and online profiles for each district on both the MCC and MA Office of Travel and Tourism websites. Walker goes on to say that, "The Initiative builds upon one of the great strengths of Massachusetts: the distinctiveness and authenticity of its communities. Cultural Districts help cities and towns identify, support and promote their unique identity and sense of place."

In keeping with this idea, the Central Square Cultural District amplifies an authentic, urban neighborhood in the heart of Cambridge that constantly evolves while maintaining a core identity as a unique and eclectic place to live, work and play. So, get involved, visit Central Square and experience a place and Cultural District like no other!

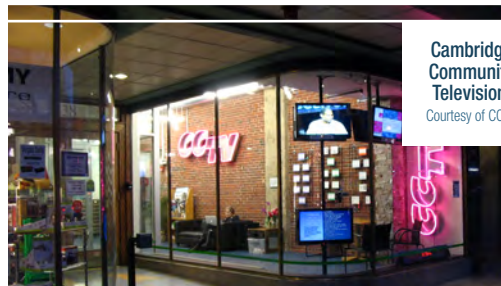
For more information, call the Cambridge Arts Council at 617-349-4380 or visit: www.facebook.com/c2culture. ■



MIT Museum facade, Courtesy of the MIT Museum



Central Square Theater at night, Courtesy of Central Square Theater



Cambridge Community Television, Courtesy of CCTV

Cambridge Veterans' Services: LENDING A *helping* HAND



The City of Cambridge has long been committed to honoring and supporting our veterans and their families. The Department of Veterans' Services (DVS) serves as an advocate for all Cambridge veterans and their dependents, and advises clients on the availability of benefits and services. It also provides financial assistance to veterans and family members in need.

FINANCIAL ASSISTANCE

The department's primary function is to administer a state financial assistance program to needy veterans and/or their families. This program provides cash assistance to help cover monthly living expenses. Veterans or their surviving spouses with a monthly income of \$1,915 or less, who meet asset guidelines are eligible for the program. For many elderly veterans, medical expenses are the largest expense they face. DVS also provides reimbursement for medical insurance premiums, Medicare Part B & D expenses as well as 100% out-of-pocket medical expenses. DVS signs them up for Mass. Health and then covers anything that Mass. Health doesn't pay.

HELP APPLYING FOR FEDERAL VA BENEFITS

In addition to providing direct assistance, DVS helps veterans in applying for federal service-connected compensation, including increases. DVS also helps veterans apply for non-service connected disability pensions, pension benefits for surviving spouses, medical, educational, housing and death benefits. The department can also represent veterans or their surviving spouses before the VA on appeal cases.

WELCOME HOME BONUS

The department assists recently discharged veterans in applying for the Welcome Home Bonus. Veterans of the war in Iraq and Afghanistan are eligible to receive a \$1,000 cash bonus and those who have served since 9/11/2001 will receive \$500. Also, veterans who served in Iraq or Afghanistan, and had subsequent deployments there are eligible for an additional \$500 bonus. Veterans who served in Iraq or Afghanistan, and had subsequent deployments to other areas are eligible for an additional \$250 bonus.

ANNUITIES

The department assists veterans and surviving spouses in applying for an annuity of \$2,000 to veterans who have suffered permanent disabilities due to enemy action, illness or accident that occurred while on active duty.

TAX EXEMPTIONS FOR HOMEOWNERS

A disabled veteran and/or their surviving spouse is eligible for certain tax exemptions for their owner occupied dwelling. The amount is determined by the veteran's disability or if they died as a result of a service connected injury or disease. The exemptions range from \$400 up to a full tax exemption – providing significant financial relief.

CEREMONIAL AND CIVIC EVENTS

In conjunction with the Cambridge Veterans' Organization (CVO), DVS coordinates public events on Patriots', Veterans' and Memorial days, including the Memorial Day Parade. For Memorial Day, DVS works with Boy Scouts and Little Leaguers to place over 9,000 flags on the graves of veterans interred in the Cambridge cemeteries. For more information, vcall 617-349-4761, TTY 617-349-0235 or E-mail: veterans@cambridgema.gov.

Cambridge Veterans' Services is located at 51 Inman St., 2nd Floor. Visit their website at: www.cambridgema.gov/vet. ■

innovation economy

AT THE HEART OF INNOVATION

During a time when construction starts stagnated nationally, Cambridge, in 2012, had 2.7 million square feet of major housing and commercial development projects break ground. This construction created a total investment of \$520 million and will produce 904 housing units. Projects moved forward throughout the city, but Kendall Square saw the most growth in lab, office and residential development. Amazon.com, Biogen, Google, Microsoft, Novartis and Pfizer are just a few of the high tech and life science companies that expanded or moved into Kendall Square last year. The trend continues



Cambridge's rich street-focused environment feeds and is fueled by its innovation economy.

with the projected spring 2013 opening of the new Johnson & Johnson Innovation Center, expansion of the Cambridge Innovation Center in Kendall Square, and arrival of the Center for Human Genetics and Nuance, a high tech company, in Cambridge. In addition, venture capital firms have moved here from the suburbs, demonstrating the high level of interest in funding local endeavors.

This significant investment will further grow the innovation economy and sustain the high quality of life and diverse community in Cambridge. The City's longstanding financial and policy commitment to providing a neighborhood-focused, healthy and vibrant urban environment has paid off, making it a place where culture, creativity, education and business can thrive in close proximity.

CAMBRIDGE'S TOP 25 EMPLOYERS: THE BIGGER PICTURE

Since the mid-1980s, the Community Development Department (CDD) has collected employment data from Cambridge employers to assemble a list of the 25 largest providers of jobs. The information is updated annually and published online at www.cambridgema.gov/top25 with links to the career web pages of the listed organizations.

The Top 25 list merits a closer look, as it provides insight into the overall economic climate in Cambridge. Some employers annually appear on the list; Harvard University and MIT have shared the first two positions every year since 1986. Lesley University regularly appears further down in the ranking. The City of Cambridge generally ranks third, and Mt. Auburn Hospital and Draper Laboratories appear on every list since 1986.

Looking beyond longtime regulars, the Top 25 reveals more. Over the years, 54 different employers have shared the other 20 positions on the list. Today, six of the eight largest private companies listed are in the biotechnology and pharmaceutical industry. Among them are Cambridge stalwarts such as Biogen Idec, Genzyme (now owned by Sanofi), and Millennium Pharmaceuticals. Adding employers who support the biotechnology cluster—researchers at MIT, the Broad Institute and start-ups at the Cambridge Innovation Center (CIC)—nine of the Top 25 employers are involved in life sciences.

While Cambridge is known as a hotbed of Internet and software innovation, much of that work occurs at smaller firms. Still, four of the Top 25 operate in this sector: Microsoft, Google, Akamai and Pegasystems, along with many Internet startups at CIC.

Finally, the remaining group in the Top 25 is diverse, ranging from health care (Cambridge Health Alliance, Spaulding Hospital Cambridge) to consultants (Forrester Research, Camp Dresser & McKee, Raytheon BBN Technologies) and encompassing the educational services firm EF International, Whole Foods and the Federal Government. The Top 25 list demonstrates the range, strength and capacity for economic growth in the city, explaining the high level of confidence in Cambridge's future.



The strength and diversity of the local economy is reflected in development throughout the city and has re-energized eastern Cambridge.

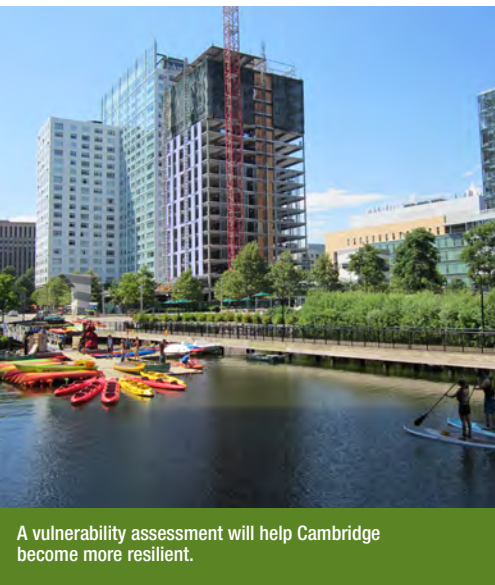
climate change & housing

CLIMATE CHANGE PREPAREDNESS PLANNING

To better prepare Cambridge for climate change, we must first understand how it is likely to impact our community. The City's Climate Change Vulnerability Assessment, which began in fall 2012 and continues through 2013, will examine potential impacts and guide the development of a preparedness plan.

The process is coordinated by an interdepartmental staff committee and consultant team, with a Technical Advisory Committee of community stakeholders and Expert Advisory Panel of leading climate authorities to help guide the assessment, provide critical information and give technical feedback. Public workshops and outreach will be integrated throughout the process to engage the community in this planning effort.

The project will provide a technical view of the Cambridge population, infrastructure, public health and local economy, focusing on our vulnerability to increased temperatures, more intense storms and flooding associated with sea level rise. The City will then develop, through a robust public process, a resilience and adaptation strategy. More information: www.cambridgema.gov/climateprep.



A vulnerability assessment will help Cambridge become more resilient.

RENEWABLE ENERGY: SOLAR TAKES FLIGHT

Solar energy systems are now feasible for many Cambridge property owners, thanks to financial incentives and cutting edge resources that provide critical information. Last year, Cambridge Energy Alliance's (CEA) solar hot water rebate program helped nine residential owners convert their systems.

One of these was a Cambridgeport family that had already renovated their historic wood-frame home to incorporate energy saving improvements including double-paned windows, full insulation, low-flow plumbing fixtures, energy efficient appliances and a high-efficiency gas heating system. Seeking additional savings, their first step toward solar was an energy assessment and analysis of the roof. Their installer then took the lead on applications and permitting, completing actual installation in one day.

Savings: The \$6,200 cost for equipment and installation was reduced by tax credits and grants to approximately \$1,925. The system is expected to save enough natural gas to pay for itself after approximately five years.

Pointers:

- Work with qualified installer in advance to achieve best balance of function and aesthetics for new plumbing.
- An architect or engineer must verify structural capacity of the roof and sign off on the project.
- Paperwork can take a long time, so start early to meet deadlines.

Get started by using Cambridge's Interactive Solar Map Tool to evaluate your solar potential: www.cambridgema.gov/solar. More details on financial incentives: www.dsireusa.org.

INCLUSIONARY HOUSING: MAINTAINING AFFORDABILITY

To maintain a livable, diverse community, the City of Cambridge works in many ways to create and preserve affordable housing.

The Inclusionary Housing Program, administered by CDD, enables the City to add both rental and homeownership units to its affordable housing stock. Cambridge's ordinance requires new market rate residential developments of 10 or more units to include affordable units. Over 460 units in privately-owned mixed-income developments throughout the city have been created this way, with an additional 170 in the pipeline.

Now is a good time to apply for inclusionary housing, with many new affordable rental units coming online this year and next. Applicants must meet program guidelines, including income and asset limits. CDD works with owners to make units available to eligible households and facilitates access to affordable rental housing at 20 privately-owned buildings through a single application. More information: www.cambridgema.gov/CDD.



New developments throughout Cambridge include affordable units.

Cambridge's Work to Create a **HEALTHY CITY** Gains National Attention

By Suzy Feinberg, Cambridge Public Health Department



Achieving good health means more than having a doctor and insurance – it is also about having opportunities for education and employment, feeling safe, having a network of friends and family, and living in a community that supports healthy choices.

While many people in Cambridge are affluent and highly educated, 15% of the city's population lives at or below the federal poverty line, 17% of adults have a high school education or less, and 6% of working-age residents report having a disability.

These residents are at greater risk for sickness and early death than their more advantaged neighbors.

“Cambridge is really a two-city city. We're a city of the rich and the poor,” said Ellen Semonoff, assistant city manager, Department of Human Service Programs. “We have Harvard and MIT, and yet nearly half the children in our public school system are growing up in low-income families.”

CREATING A HEALTHY CITY

When rent control ended in the 1990s, Cambridge made a deliberate effort not to become an enclave for the wealthy through the expansion of affordable housing.

Civic leaders wanted to preserve the rich social fabric of Cambridge – a place where people of different socioeconomic, ethnic, and cultural backgrounds live, work and thrive together.

With this vision has come a substantial commitment by the city and community organizations to ensure that less advantaged residents not only have their basic needs met—food, shelter, medical care—but also are afforded opportunities, such as adult education and job training, to change the circumstances of their lives.

“If you want to reduce illness and early death, you should examine the true drivers of health,” said Claude Jacob, Chief Public Health Officer and director of the Cambridge Public Health Department. “Income and education are two of the biggest predictors of lifelong health and well-being.”

Mr. Jacob added that Cambridge has a culture of collaboration in which non-profit agencies like the Margaret Fuller Neighborhood



Cambridge was one of six U.S. communities to receive an inaugural Roadmaps to Health Prize from the Robert Wood Johnson Foundation. Cambridge was honored this year for its outstanding community partnerships and achievements in the areas of healthy eating and physical activity, strengthening families, progressive urban planning, and integration of public health and clinical care.

House, local coalitions, businesses and residents work with city government to improve the health of the community. This year, the Health Department will be engaging a broad coalition of community stakeholders to create a vision for a healthy Cambridge and develop a multi-year health improvement plan to achieve this vision.

INVESTING IN YOUNG CHILDREN

Early life experiences have an enormous impact on health, academic achievement, and future earnings.





“Our goal is to level the playing field so that children growing up in the city’s housing developments have access to the same opportunities to lead a healthy, successful life as children from more affluent families,” said Semonoff.

Cambridge offers parenting classes, playgroups, an early literacy program and other services that focus on a child’s first three years of life – a time of rapid brain development. Many programs do special outreach to low-income and immigrant families of young children.

These varied initiatives help parents build strong, nurturing relationships with their youngsters and empower them to be their child’s first and most important teacher.

MAKING THE HEALTHY CHOICE THE EASY CHOICE

Changing behaviors like overeating or smoking often require more than will power.

“Local government can have a significant impact on health,” said City Manager Robert W. Healy. At the city level, Cambridge is tackling health issues through policy, regulation, and changing the urban landscape.

The Cambridge Food and Fitness Policy Council was established in 2011 to explore policy, systems and practices for making healthy foods and fitness opportunities available to more residents. The policy council expands on the success in the Cambridge Public Schools to address childhood obesity.

For over a decade, City, school and community partners have worked together to improve the school environment so that kids eat healthier and are more active. These improvements include healthier and tastier school lunches; cycling, ballroom dancing and other appealing P.E. activities; outdoor gardens in all elementary schools; student health and fitness report cards sent home annually; and adoption of model nutrition and wellness policies.

Meanwhile, the City’s urban planners have

created safer streets for pedestrians and cyclists, implemented commuting polices that encourage walking and biking to work, launched a bike share program, and are redesigning City parks and playgrounds to serve people of all ages and abilities.

A PUBLIC HEALTH APPROACH TO HEALTH CARE

Cambridge Health Alliance (CHA), which operates three hospitals and numerous primary care sites, has a long-standing commitment to public health.

CHA runs both the Cambridge Public Health Department and a large community health program that provide traditional public health services like free immunizations, cancer screenings and family planning, as well as programs that address underlying causes of poor health.

To meet the needs of its diverse patient population, CHA provides culturally and linguistically accessible services and focuses on chronic disease management and prevention to improve the health of patients with complex issues like obesity, substance abuse, heart disease, diabetes, depression and asthma.

“To see meaningful improvements in health outcomes, health care systems need to focus on prevention and care for patients in the context of their real lives and the communities where they live,” said Patrick Wardell, CEO of Cambridge Health Alliance and the city’s Commissioner of Public Health. ■



INTERESTING FACTS

- **Cambridge is reversing the city’s childhood obesity epidemic. Based on student height and weight data, obesity among Cambridge public school children in grades K-8 declined from 21% in 2004 to 16% in 2012.** Source: Cambridge Public Schools
- **Cambridge teens are exercising more and eating more fruits and vegetables compared to 10 years ago.** Source: Cambridge Teen Health Survey, 2002-2012
- **Cambridge has tripled its cycling population in 10 years.** Source: Cambridge Community Development Department
- **Nearly a third of Cambridge residents either walk or bicycle to work.** Source: American Community Survey, 2008-2010

Preschoolers **LEARN** Social and Emotional Skills and **HELP** Out in their Community



Martin, age three, is running in the playground and falls down. He scrapes his knee and is crying. Four year old Keisha kneels down beside him and puts her arm around his shoulders to comfort him. Keisha is demonstrating the skill called empathy – caring for another. Observing this show of sympathy, teachers note that Keisha has acquired yet another social emotional skill. They know that this, and others she has developed, will help her be successful in Kindergarten in the fall.

Why will this skill help Keisha be successful in Kindergarten? Good social and emotional skills help children pay attention, remember information on purpose and function socially in school. In fact, Kindergarten teachers rate social and emotional skills as more important than the ability to hold a pencil or know the alphabet.

At the Department of Human Service Preschool Programs, teachers focus on helping children learn to identify and understand their own emotions as well as “read” those of others. They assist children in managing – shaking off – their sometimes overwhelming emotions. Empathy and developing and maintaining relationships, both with adults and other children, are modeled by teachers and encouraged in children.

One way City preschools develop these social emotional skills is through curriculum units. East Cambridge Preschool children and families were asked to tell teachers about examples of kindness and thoughtfulness that happened at home. These examples are shared at morning Circle Time. Children are then asked to think about ways to be kind and nice to each other. In December 2012, children and teachers began to think about ways to expand acts of kindness to their community – the East Cambridge neighborhood.

Children went to the Millers River Senior Center one morning to sing songs to the residents and share their morning snack. While the goal was to spread kindness, children and teachers received as much kindness and generosity from the residents as they hoped to bring to them.

The Haggerty Preschool took a more literate approach to helping children learn about kindness and helping others. After creating a kindness board, children were introduced to



Top: King Open preschoolers visit the Food for Free pantry. **Immediately above:** East Cambridge preschoolers visited Millers River seniors to sing songs and share snacks with the residents.



Top: Children celebrate with staff at Food for Free pantry. **Immediately Above:** Children making “Stone Soup.”

opment of these skills can be built into any curriculum. Children at the King Open Preschool were learning about the different “helper” roles that people have within a community, such as those at a food pantry. After learning about this helper role, children began collecting food to donate to a local pantry. Before delivering the food, the teachers conducted a math activity by asking the children to count and sort the cans and other food items families donated. Then, children took a field trip to the Food for Free pantry to deliver the food. While there, they learned how the food is sorted, stored and made available to families. Thus, while learning about community helpers, children also had an opportunity to engage in an act of kindness and develop a sense of responsibility for others in the community.

The development of solid social and emotional skills is a central part of the Department of Human Service Preschools Program. It is not only important for children to be able to know their ABCs in order to succeed in Kindergarten, but also to be ready for school by being able to pay attention, remember information and function socially in school.

For more information about Department of Human Service Preschools Program for children ages 2.9 to age 5, please call 617-349-6200 or visit the DHSP website at www.cambridgema.gov/DHSP.aspx. ■

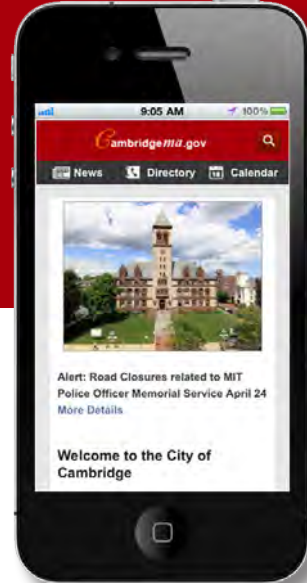
the old folk tale retold in the book *Stone Soup* by Marcia Brown. In this book, the village people come together to feed soldiers who had no food. Inspired by the story, children and teachers decided it would be kind to bring soup on a pre-arranged field trip to the Salvation Army’s Our Place Preschool. Children and teachers made a list of soup ingredients. Families bought them and came to the classroom to cut and chop up ingredients. During the field trip to Our Place Preschool, children from both preschools sang songs and danced together before sharing a snack of granola bars and carrots. The Haggerty children left their “stone soup” and a special chocolate cake for the other preschool’s children to enjoy later. Building on this experience of making soup, the preschool’s dramatic play area was turned into a market where the children could “buy” ingredients needed to cook soup. Children also made “ingredient books” (recipe books) in the writing center. But best of all, teachers have noticed more children talking about ways they can be helpful to one another.

A kindness curriculum is just one way to develop children’s social emotional skills. Indeed, as this example will show, the devel-



Top: A King Open preschooler drops off collected cans at the Food Pantry. **Immediately Above:** A Preschool Director leads children through identifying, counting and sorting food collected for the Food for Free pantry.

Mobile Cambridge: KEEPING YOU CONNECTED



NEW CAMBRIDGE MOBILE WEBSITE

The City expects to launch a mobile version of its website by the end of May. Just enter “City of Cambridge MA” or “cambridgema.gov” in your smartphone or tablet browser and the City of Cambridge mobile website will appear. The new mobile website features a scaled down version of the website with easy access to popular links such as City Calendar, Important Phone Numbers and Pay Online. The City and three departments, Library, Police and Public Works have customized designs. No more scrolling or swiping the screen on your phone to try to navigate the full website. However, if users still prefer viewing the full site, that option is also available from a link at the bottom of the mobile website.



OFFICIAL CITY SOCIAL MEDIA PAGES

Many City departments have social media pages that are meant to supplement other forms of communications currently utilized by the City and its departments. The City’s website, www.cambridgema.gov, still serves as a primary source for City information. To access official City department social media pages, visit the City’s website and click on the Facebook logo.



REAL-TIME CRIME TWEETS

In February, Cambridge Police began sending followers automated tweets of high profile incidents in real time. These tweets include type of incident, location to the 100 block and the language “report of possible” at the beginning of each tweet to indicate that the call that came in to dispatchers was reporting a possible crime which may or may not be confirmed upon officers’ arrival. Social media is not to be used to report crimes or emergencies to the police; those requiring an immediate response to a public safety issue should always dial 9-1-1. Follow @CambridgePolice on Twitter to see their real-time crime tweets.

CAMBRIDGE IREPORT: LET US KNOW!

Ride past a pothole every morning on your way to work? Walk past a burned-out streetlight on your way home every night? Want to report an unshoveled or icy sidewalk? Notice unsightly graffiti in your neighborhood? Help the City fix these and other problems by reporting them through Cambridge iReport. Cambridge iReport is your direct connection for commonly requested City services. By using Cambridge iReport, your request is automatically assigned to the responsible department, and you are given a tracking number and contact information in order to be able to follow up on your request if needed. Reporting an issue takes only a minute and helps make our city a better place to live, work and visit! Cambridge iReport is also available on your mobile device from the iTunes App Store and the Android Marketplace.



TOWED VEHICLE LOOK-UP

The City recently launched a new online service to look up a towed vehicle. Visit the City’s Website, www.cambridgema.gov, and click on Towed Vehicle Search under Online Services. You may look up a recently towed vehicle by typing at least 3 characters of the license plate number in the Plate Number field, OR you may search for a vehicle by selecting a Make and Model. Then click on the Search Button. If your vehicle has been towed, it will give you the name, address and phone of towing company. If you are unable to locate your vehicle, you may call the Police Department at 617-349-3300.

CITY PROJECTS UPDATE

The City of Cambridge is committed to improving the roadways, sidewalks and utilities for residents and business owners and also keeping them informed of progress on major projects.

Before any major City construction projects begin, the Department of Public Works will notify residents and businesses within the immediate area about the work to be done, what to expect during construction and where to access updates. Public Works also has a community process for significant street and roadway reconstruction. We highly value the input of residents and business owners and working with the community to improve roadways, sidewalks and utilities around the city. Below is a brief overview on two longer-term projects under way in Cambridge.

CAMBRIDGE
DEPARTMENT
OF PUBLIC
**THE
WORKS**

WESTERN AVE. RECONSTRUCTION PROJECT

The reconstruction of Western Avenue between Green Street and Memorial Drive will include a new storm water outfall to the Charles River, new sewer/drain lines and catch basins, new water main and services, newly constructed sidewalks and pedestrian ramps, reconstruction of the roadway, a separated bicycle lane, new street trees, landscaping and irrigation, and an enlarged Cronin Park. Construction is scheduled to be completed in 2014.

ALEWIFE SEWER SEPARATION PROJECT

The Alewife Sewer Separation Project is a key element of the Massachusetts Water Resources Authority's (MWRA) Long Term Combined Sewer Overflow (CSO) Control Plan for the Alewife Brook. Construction in the neighborhoods east of Fresh Pond –

Huron A, Huron B and Concord Avenue areas – will separate existing combined sewers and provide dedicated sanitary sewers and stormwater drains. In addition to this utility work, the project will provide an opportunity to reconstruct streets and sidewalks, and plant trees. Separated stormwater from these areas will discharge to the stormwater wetland that is under construction in the Alewife Reservation. Scheduled for completion in September 2013, the wetland will have significant ecological, recreational and educational amenities for the community. ■

MORE INFO

To view City project updates, schedules and more, visit www.cambridgema.gov/theworks and click on City Projects. Residents can also sign up to receive project updates via email for various City construction projects. Community Relations Managers associated with City projects can be reached at 617-349-4870 or 617-349-4825.

Email: theworks@cambridgema.gov

Facebook:
www.facebook.com/CambridgeDPW

Twitter: www.twitter.com/CambridgeDPW

Left Photo: Aerial view of crews working on the stormwater wetland in the Alewife Reservation. **Right Photo:** Construction crews installing a new sewer main at the corner of Putnam Ave. and Western Ave.



REFERENCE & RESOURCES

SETTLING IN - FOR NEW CITY RESIDENTS

- ▶ **22-CityView (Municipal Channel)** For calendar information, community programs and City Council meetings, Mondays at 5:30 p.m.
- ▶ **Adult Education and Employment Programs** See Department of Human Service Programs, pg. 21.
- ▶ **County** The City of Cambridge is in Middlesex County.
- ▶ **Families, Youth and Seniors** The Department of Human Service Programs provides a wide range of services. See page 21.
- ▶ **Hubway** Regional Bike share program with multiple stations in Cambridge and connecting stations in neighboring communities. Call 1-855-4HUBWAY or visit www.thehubway.com
- ▶ **Libraries** Call 617-349-4040 or visit www.cambridgepubliclibrary.org
- ▶ **Moving Van Permits** Call 617-349-4721 or visit www.cambridgema.gov/Traffic
- ▶ **Pay City Bills Online** Parking tickets, Excise Tax (automobile tax), Property Tax and Water bills can be paid online for a small convenience charge. Visit www.cambridgema.gov, then Online Services.
- ▶ **Pet Registration** Dogs must be registered with the Cambridge Animal Commission. Call 617-349-4376.
- ▶ **Postal Service** Call 800-275-8777 or visit www.usps.com
- ▶ **Property Tax** Bills are issued twice annually. Call the Finance Department at 617-349-4220.
- ▶ **Public Transportation** MBTA, 800-392-6100 or www.mbta.com. Red and Green Lines of Subway (known as the T) and many buses serve Cambridge. Commuter Rail (Fitchburg Line) connects at Porter Square.
- ▶ **Vehicle Registration** 857-368-8000 or www.mass.gov/rmv
- ▶ **Recreation** The Department of Human Service Programs provides a wide range of services. See page 21.
- ▶ **Recycling/Trash Pick-up** Cambridge has a mandatory recycling ordinance. See page 19.
- ▶ **Resident/Visitor Parking Permits** Permits are required for on-street parking in posted residential neighborhoods. See page 19.
- ▶ **School Information / Registration** See page 23.
- ▶ **School Closings and Information** Call the CPS Link Line for recorded information, 617-349-6513.
- ▶ **Snow Emergency Parking Ban** If the City declares a snow emergency, parking is prohibited on certain streets. See page 19.
- ▶ **Snow Clearance Ordinance** Property owners are required to remove snow/ice from sidewalks and curb ramps next to their home/business.
- ▶ **Street Cleaning** Streets are cleaned once a month from April through December. During designated street cleaning days, cars must be moved or they will be ticketed and towed. See page 19.
- ▶ **Voter Registration** Call the Cambridge Election Commission, 617-349-4361 or visit www.cambridgema.gov/Election. See page 17.

UTILITIES

- ▶ **Electricity/Gas**
NSTAR 800-592-2000 TTY 800-322-8242
www.nstar.com Dig Safe 888-344-7233
- ▶ **Sewer** 617-349-4851
www.cambridgema.gov/TheWorks
- ▶ **Telephone**
Cambridge area codes are 617 and 857.
Dial 1 plus the area code for long distance calls.
- ▶ **Local & Long Distance Service**
AT&T 800-205-6268 www.att.com
Comcast 800-COMCAST www.comcast.com
Verizon 800-837-4966 www.verizon.com
- ▶ **Water** 617-349-4770
www.cambridgema.gov/CWD
www.twitter.com/CambWaterDept
Cambridge operates its own water utility. Bills are issued quarterly. Visit the Website to pay online.

SIGN UP FOR CAMBRIDGE ALERT NETWORK AT www.cambridgema.gov

**CAMBRIDGE
ALERT
NETWORK**

CodeRED • CitizenObserver • Cambridge E-Line

- **CodeRed** alerts residents via phone, text, e-mail about Snow and other City emergencies, evacuations, major water outages or service disruptions.
- **Citizen Observer** is used by police to send neighborhood crime alerts via emails and text.
- **Cambridge E-LINE** is used to send email and text reminders about Street Cleaning & Trash/Recycling pickup and certain City news.

► **Important Numbers**

Emergency 911
 Police (non-emergency) 617-349-3300
 Fire (non-emergency) 617-349-4900
 Public Health Dept. 617-665-3800
 Public Schools 617-349-6400
 Public Works 617-349-4800
 Water Department 617-349-4770

► **Cambridge City Hall**

795 Massachusetts Avenue
 Cambridge, MA 02139*
 617-349-4000 TTY 617-349-4242**
www.cambridgema.gov
www.facebook.com/CambridgeMA.gov

* Address for all departments in City Hall
 ** TTY number for all departments in City Hall
 Mon., 8:30 a.m. - 8 p.m., Tues. - Thurs.,
 8:30 a.m. - 5 p.m., Fri., 8:30 a.m. - 12 p.m.

► **City Manager's Office**

617-349-4300
www.cambridgema.gov/cmanager.aspx
 Robert W. Healy, City Manager
 Richard C. Rossi, Deputy City Mgr.
 The City Manager is appointed by the City
 Council as the City's Chief Executive Officer.
 E-mail: citymanager@cambridgema.gov

► **City Council Office**

617-349-4280
www.cambridgema.gov/ccouncil.aspx
 The City Council is Cambridge's elected
 legislature and meets on Mondays at 5:30 p.m.
 at Cambridge City Hall. View meetings live
 via webcast at www.cambridgema.gov.
 Meetings are rebroadcast on 22-CityView
 Wednesday at 5:30 p.m., Friday at 10 a.m.
 Email: council@cambridgema.gov

► **Mayor's Office**

617-349-4321
www.cambridgema.gov/mayor.aspx
 Henrietta Davis, Mayor
 The Mayor chairs City Council and School
 Committee meetings and serves as the City's
 political leader. E-mail: mayor@cambridgema.gov

Check out the City's Website for more
 resources and helpful information:

- Sign up for Cambridge Alert Network
- View City Council meetings via Webcast
- Pay Bills Online
- City Permits
- Like Cambridge on Facebook



www.cambridgema.gov

► **City Information Lines**

Construction Information 617-349-4870
 Graffiti Hotline 617-349-6955
 Library Reference Desk (open until 9 p.m.) 617-349-4044
 Potholes/Sidewalk/Street Repairs 617-349-4854
 Public Works (24 hr. emergency service) 617-349-4800
 Rodent Control 617-349-4899
 School Closings/Information Line 617-349-6513
 Snow Emergency Parking Bans 617-349-4700
 Snow Hotline (unshoveled/icy sidewalks) 617-349-4903

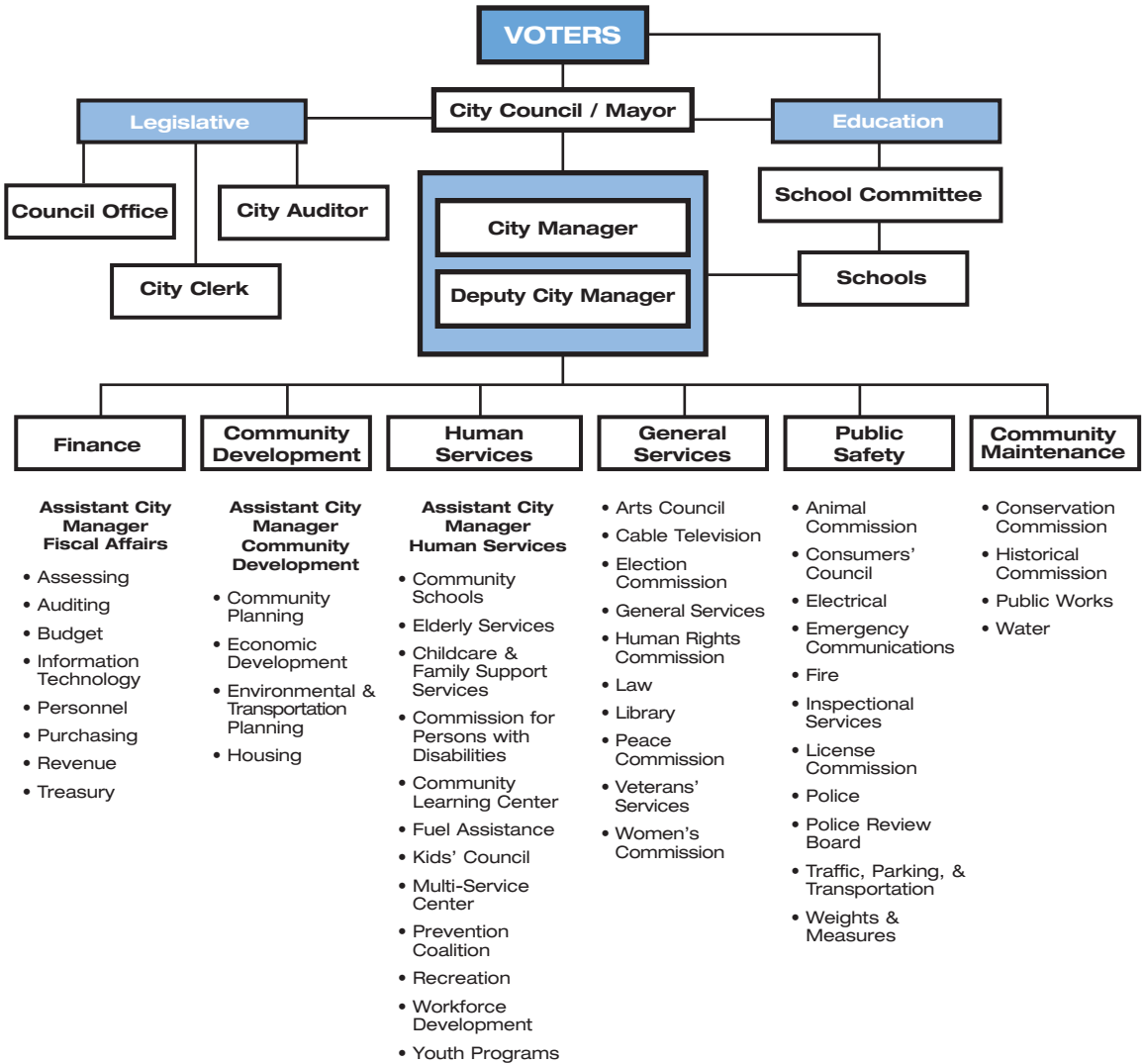
► **City Departments**

22-CityView (Municipal Channel pg. 28) 617-349-4296
 Affirmative Action (pg. 17) 617-349-4331
 Animal Commission (pg. 18) 617-349-4376
 Arts Council (pg. 28) 617-349-4380
 Assessing (pg. 18) 617-349-4343
 Auditing 617-349-4240
 Budget 617-349-4270
 City Clerk (pg. 18) 617-349-4260
 City Council Office (pg. 15) 617-349-4280
 City Manager's Office (pg. 15) 617-349-4300
 Community Development (pg. 20) 617-349-4600
 Commission for Persons w/ Disabilities (pg. 21) 617-349-4692
 TTY 617-492-0235
 Conservation Commission (pg. 25) 617-349-4680
 Consumers' Council (pg. 17) 617-349-6150
 Election Commission (pg. 17) 617-349-4361
 Electrical 617-349-4925
 Emergency Communications (pg. 25) 617-349-6911
 Finance (pg. 18) 617-349-4220
 Fire (non-emergency) (pg. 25) 617-349-4900
 GLBT (pg. 17) 617-440-4329
 Historical Commission (pg. 28) 617-349-4683
 Human Rights Commission (pg. 17) 617-349-4396
 Human Services (pg. 21) 617-349-6200
 Information Technology (IT) 617-349-4140
 Inspectional Services (pg. 18) 617-349-6100
 Law 617-349-4121
 Library (pg. 27) 617-349-4040
 License Commission (pg. 18) 617-349-6140
 Mayor's Office (pg. 15) 617-349-4321
 Peace Commission (pg. 17) 617-349-4694
 Personnel (pg. 17) 617-349-4332
 Police (non-emergency) (pg. 25) 617-349-3300
 Police Review & Advisory Board (pg. 17) 617-349-6155
 Public Health Department (pg. 24) 617-665-3800
 Public Works (pg. 19) 617-349-4800
 Purchasing (pg. 20) 617-349-4310
 Schools (pg. 23) 617-349-6400
 Traffic, Parking and Transportation (pg. 19) 617-349-4700
 Veterans' Services (pg. 17) 617-349-4761
 Water (pg. 14) 617-349-4770
 Weights & Measures (pg. 17) 617-349-6133
 Women's Commission (pg. 17) 617-349-4697

► **Other Helpful Numbers**

Cambridge District Court (Medford) 781-306-2710
 Cambridge Housing Authority 617-864-3020
 Mass. Dept. of Conservation & Recreation 617-626-1250
 Middlesex Probate Court 617-768-5800
 Middlesex South Registry of Deeds 617-679-6300
 Middlesex Superior Court (Woburn) 781-939-2700

ORGANIZATIONAL CHART



CAMBRIDGE POLITICAL SYSTEM

► Cambridge Political System Plan E Form of Government – Proportional Representation

The City of Cambridge is governed by the Plan E form of Government. Nine City Councillors and six School Committee members are elected at large every two years under the Proportional Representation (PR) system, which allows voters to vote for as many candidates as they wish, but they must indicate their order of preference among those candidates by numbering each choice. Once elected, the City Council then elects a Mayor and a Vice Mayor.

The Mayor chairs the City Council and School Committee and serves as the City’s political leader. The City Council appoints a City Manager to serve as the City’s Chief Executive Officer.

For more information on voting and the election process, call the Cambridge Election Commission at 617-349-4361 or visit their Website, www.cambridgema.gov/Election.

CITY ORDINANCES

► Cambridge Municipal Code City Clerk’s Office 617-349-4260

Cambridge Municipal Code, organized by subject matter and updated biannually, can be viewed online. Visit the City’s Website, www.cambridgema.gov, and click on “City Ordinances” under Quick Links section. The most recent and official version of the Code is on file at the City Clerk’s Office.

VOTING

- ▶ **Cambridge Election Commission**
51 Inman Street, 1st Floor 617-349-4361
www.cambridgema.gov/Election
- ▶ **Upcoming Elections**
Special State Primary: Tuesday, May 28, 2013
Special State Election: Tuesday, June 25, 2013
Municipal Election: Tuesday, November 5, 2013
- ▶ **Voter Registration**
Call or visit the Cambridge Election Commission for registration,

RIGHTS AND RESOURCES

- ▶ **Affirmative Action Office** 617-349-4331
www.cambridgema.gov/aff.aspx
Works to ensure compliance of equal employment opportunity and affirmative action in accordance with the intent of the regulations and guidelines of federal and state agencies.
- ▶ **Commission for Persons with Disabilities**
617-349-4692 (TTY) 617-492-0235
www.cambridgema.gov/ccpd
Addresses disability and access issues. See full listing on page 21.
- ▶ **Consumers' Council** 617-349-6150
www.cambridgema.gov/consumercouncil.aspx
Information on consumer rights and free mediation service for resolving consumer disputes including retail & internet sales; auto sales & repair; banking, credit & debt collection; home improvement; cable TV & telephone; and landlord/tenant issues.
- ▶ **GLBT Commission**
617-440-4329 www.cambridgema.gov/glbt.aspx
Advocates for a culture of respect and monitors progress toward equality of all persons with regard to sexual orientation and gender identity.



In fall 2012, Cambridge kicked off the domestic violence awareness campaign 21 Days of Questions, 365 Days of Action that continues through 2013. The campaign encouraged community discussion on domestic violence, asking important questions and generating follow-up meetings with participants to help prioritize issues Cambridge should focus on. Together, community members and City leaders will examine existing resources to implement new strategies to address domestic violence in Cambridge.

polling locations and absentee ballots. Alternatively, you can register to vote when you make a transaction at a Registry of Motor Vehicles branch or License Express location. You must be a U.S. citizen, a Massachusetts resident and 18 years old on or before election day to register. Mail-In Voter Registration forms are available at all Cambridge post offices, public libraries, firehouses, and at the City Clerk's office.

- ▶ **Human Rights Commission**
617-349-4396
www.cambridgema.gov/hrc.aspx
Investigates and resolves complaints of discrimination in Cambridge in housing, employment, education and public accommodations.
- ▶ **Peace Commission** 617-349-4694
www.cambridgema.gov/peace.aspx
Promotes peacemaking within Cambridge at the personal, neighborhood and citywide levels.
- ▶ **Personnel Department**
617-349-4332
www.cambridgema.gov/personnel.aspx
City job openings are posted in City Hall, in libraries and on the Website. Cambridge is an Affirmative Action/Equal Opportunity employer.
- ▶ **Police Review & Advisory Board**
617-349-6155
www.cambridgema.gov/prab.aspx
Hears and decides citizen complaints of misconduct filed against Cambridge Police Officers.
- ▶ **Veterans' Services Department**
617-349-4761
www.cambridgema.gov/vet.aspx
Provides financial assistance to needy veterans and/or their dependents. Assists veterans and their families in applying for federal VA benefits, as well as state and local veterans' programs and services.
- ▶ **Weights & Measures**
617-349-6133
www.cambridgema.gov/weight.aspx
Provides equity in the marketplace for consumers and businesses by providing quality inspections of weight, measure or pricing issues.
- ▶ **Women's Commission**
617-349-4697
www.cambridgewomenscommission.org
Advocates on behalf of all women and girls with other City departments and officials, local organizations, and state government to increase their opportunities through program development, policy recommendations, and public education on key issues.

- ▶ **Animal Commission** 617-349-4376
www.cambridgema.gov/animal.aspx
 Annual dog registration/licensing, rabies vaccination clinics and animal-related issues.
- ▶ **Arts Council** 617-349-4380
www.cambridgeartscouncil.org
 Issues Street Performer Permits.
- ▶ **Assessing Dept.** 617-349-4343
www.cambridgema.gov/assess.aspx
 Manages commercial and residential property values and the property database, including changes of title and subdivisions, and personal property (business) tax. Administers residential exemption tax relief programs. Grants abatements/personal exemptions of real estate, personal property, and motor vehicle excise tax.
- ▶ **City Clerk's Office** 617-349-4260
www.cambridgema.gov/cityclerk.aspx
 Official record keeper for the City. Issues: Birth, Death, Marriage Certificates; Domestic Partnership Registration and Termination; and assorted Business Certificates.
- ▶ **Community Development Department** 617-349-4600
www.cambridgema.gov/cdd
 Planning Board special permits and sign certificates as may be required by zoning. Administers Riverfront Mobile Food Program.
- ▶ **Conservation Commission** 617-349-4680
www.cambridgema.gov/cc.aspx
 Issues Wetlands Protection Act Permits.
- ▶ **Finance Dept.** 617-349-4220
www.cambridgema.gov/finance.aspx
 Real estate, personal property and motor vehicle excise taxes; water and sewer charges; municipal lien certificates.
- ▶ **Fire Dept.** 617-349-4918
www.cambridgefire.org Permits for smoke detectors, fire alarm and sprinkler systems, welding and torch use, fuel storage and use.
- ▶ **Health Dept.** 617-665-3800
www.cambridgepublichealth.org
 Enforces regulations pertaining to biosafety, laboratory animals, asbestos in soil, tobacco, body art, body work therapy, tanning salons, and indoor ice rinks.
- ▶ **Historical Commission** 617-349-4683
www.cambridgema.gov/Historic
 Permits to alter a designated building or to demolish a building over 50 years old.

- ▶ **Inspectional Services** 617-349-6100 www.cambridgema.gov/inspection.aspx
 Administers state building codes; building, demolition, asbestos removal, and sign permits; electrical, gas, plumbing and sprinkler permits; certificates of occupancy/inspection; curb cut applications; sanitary code inspections; permitting for restaurants/day camps/pools/tobacco sale; enforcement of zoning ordinance. Call for construction-related noise complaints. More permits now online on our new website.
- ▶ **License Commission** 617-349-6140 www.cambridgema.gov/license.aspx
 Administers licenses and enforces regulations governing: alcohol, antique stores, auctions, entertainment, festivals, garage and gasoline, hackney, innholder, jitney, livery/limousine, lodging, open air parking, package goods, palm readers, peddlers/vendors, and restaurants. Call for repetitive noise complaints.
- ▶ **Police Department** 617-349-3337
www.cambridgepolice.org Permits to carry firearms.
- ▶ **Public Works** 617-349-4800
www.cambridgema.gov/TheWorks
 Issues permits for:
 - Special events and using parks for non-athletic use 617-349-4846
 - Filming or photographing on City property 617-349-4846
 - Newsrack vendors 617-349-4869
 - Construction-related permits (sidewalk obstruction and excavation, boom/concrete trucks, cranes) 617-349-4833
- ▶ **Recreation Division** 617-349-6200
www.cambridgema.gov/DHSP2/recreation.cfm
 To reserve a field for athletic use, call 617-349-6238.
- ▶ **Traffic & Parking** 617-349-4721 www.cambridgema.gov/Traffic
 Permits for residential street parking, visitor parking, street obstruction/closure, construction truck/traffic clearance, moving vans, moving containers or crates, media vans, dumpsters, military personnel parking, traffic special permit (VIP reserved areas, parades, road races), and changes in quantity, use, or location of off-street parking spaces. Available forms include those for parking ticket and tow disputes, traffic sign and signal inquiries and complaints.
- ▶ **Water Department** 617-349-4770 www.cambridgema.gov/CWD
Email: cwd@cambridgema.gov
 Permits: water-related construction, hydrant use and events at Fresh Pond.

Issues and Concerns

- Consumer disputes 617-349-6150
- Discrimination in housing, employment, other 617-349-4396
- Graffiti hotline 617-349-6955
- Noise complaints (construction-related) 617-349-6100
- Noise complaints (both repetitive and immediate) 617-349-3300
- Parking ticket issues 617-349-4700
- Potholes / sidewalks / street repairs 617-349-4854
- Public Works (24 hr. emergency service) 617-349-4800
- Public Works (svc. requests) theworks@cambridgema.gov
- Recycling/Yard Waste recycle@cambridgema.gov
- Rodent control 617-349-4899 or rodents@cambridgema.gov
- Snow hotline (report unshoveled/icy sidewalks) 617-349-4903
www.cambridgema.gov/snow
- Street light repair 617-349-4925
- Water Dept. 24-hr emergency service 617-349-4770
- **Cambridge iReport:** report it online www.cambridgema.gov

FACILITIES & PUBLIC WORKS

▶ **Department of Public Works (DPW)**

147 Hampshire Street 617-349-4800
www.cambridgema.gov/TheWorks
www.facebook.com/CambridgeDPW
www.twitter.com/CambridgeDPW
E-mail: theworks@cambridgema.gov
Cambridge Cemetery 617-349-4890
Engineering 617-349-4845
Parks/Forestry 617-349-4880
Service Requests 617-349-4846
Sewer Maintenance 617-349-4851
Street Maintenance 617-349-4851
24-Hour Emergency 617-349-4800

▶ **Street Cleaning 617-349-4800**

On designated street cleaning days, cars must be moved or they will be ticketed and towed. Check neighborhood signs for schedules or visit the DPW Website and click on Services > Street Cleaning.

▶ **Trash Collection 617-349-4800**

Weekly curbside pickup and pre-arranged pickup of large appliances. Trash placed at the curb the night before collection must be in rodent-resistant barrels with tight-fitting lids, no earlier than 6 p.m. For exemptions, call 617-349-4692. Trash in plastic bags can only be placed at the curb on collection day, no later than 7 a.m. Only heavy duty plastic bags will be collected. Hazardous waste drop-off is held 3 times per year. For a full schedule, visit the DPW Website.

▶ **Curbside Recycling 617-349-4800**

A mandatory recycling ordinance requires residents, businesses and institutions to recycle. Recycling containers and weekly curbside pickup (on the same day as trash collection) are provided free to residents, K-12 schools and non-profits with fewer than 50 employees. Visit the DPW website or email Recycle@cambridgema.gov for more information and to receive the monthly email newsletter.

▶ **Traffic Parking & Transportation Department**

344 Broadway 617-349-4700
www.cambridgema.gov/Traffic

For information on resident and disability parking, parking tickets, off-street parking, moving vans, street signs, traffic signals and more.

▶ **Resident/Visitor Parking Permits 617-349-4700**

Resident permits are required to park on residential streets. Your vehicle must be principally garaged in Cambridge and you must have proof of your residency (a utility bill dated within the last 30 days, indicating your Cambridge residence and in the same name as the vehicle registration). Visitor passes are also available and restricted to one per household. Visitors to a residential household should use the visitor pass.

▶ **Parking Ticket Payment/Disputes 617-349-4700**

Tickets can be paid online at www.cambridgema.gov/traffic; by phone at 617-491-7277; by mail at P.O. Box 399113, Cambridge, MA 02139; and in person at 344 Broadway, Cambridge. Tickets can be disputed by using the online dispute form on the department's Website. You will be notified of your hearing date by mail.

▶ **Snow Emergency Parking Ban 617-349-4700**

When a snow emergency is declared, parking is prohibited on major streets and on one side of smaller streets. Check posted signs carefully. To find out if a ban is in effect, call, visit www.cambridgema.gov or check 22-CityView. For a list and map of parking restrictions, or information on available off-street parking, visit www.cambridgema.gov/traffic/snow.cfm.

▶ **Recycling Center**

147 Hampshire Street 617-349-4800
Tuesday & Thursday, 4 - 7:30 p.m.
Saturday, 9 a.m. - 4 p.m.

Accepts a range of materials not picked up at curbside including food waste, mercury items, non-alkaline batteries, plastic bags. Open to Cambridge residents and businesses with fewer than 50 employees. Visit the Website for a full list of items accepted.

▶ **Yard Waste 617-349-4800**

Separate yard waste is collected from the first full week in April through the second week in December 2012; collection dates are April 2 - December 14. Place yard waste in paper refuse bags or loose in barrels with City stickers. Call 617-349-4800 for stickers.

▶ **Snow Clearance 617-349-4800** cambridgema.gov/snow

Property owners are required to remove snow and ice from sidewalks next to their property within 12 hrs after snowfall ends in the daytime and before 1 p.m. if it has fallen during the night. Treat ice with a melting substance within 6 hours of the time it forms. For exemptions, call the Council on Aging at 617-349-6220.

▶ **Street Lights 617-349-4925**

To report a streetlight that is not working, call the electrical dept. at the number listed above (24 hrs.) or e-mail streetlightrepair@cambridgema.gov.

TRAFFIC & PARKING

▶ **Moving Van Permits**

617-349-4721

Residents can reserve a space in front of their buildings for moving vans. The online permit application must be submitted 4 days prior to the move date.

▶ **Permits 617-349-4721**

The Traffic Parking & Transportation Department issues permits for: block parties, street obstruction, moving vans, dumpsters and contractor parking. All applications are available online.

▶ **Towed Vehicles 617-349-3300**

Call number above with your license plate or check directly with these towing companies:
B&B 617-492-5781
Pat's 617-354-4000
Phil's 617-547-3701

▶ **Signed Disability Parking Space 617-349-4700 (TTY) 617-349-4621**

If you have a disability plate or placard, you may file an application for a residential disability parking space. Requirements are stated on the application, which is available on the Traffic Parking & Transportation Website or at the department.

▶ **Community Development Department (CDD)**

344 Broadway 617-349-4600
www.cambridgema.gov/cdd
www.facebook.com/CDDat344
www.twitter.com/CDDat344

CDD's mission is to enhance the character and diversity of the city's neighborhoods and support sustainable economic growth that expands opportunities for residents, enables a high quality of life within the community, and contributes to a healthy environment.

▶ **Community Planning (Division of CDD) 617-349-4650**

www.cambridgema.gov/cdd/cpdiv
 Information and technical assistance on zoning, land use, urban design, demographic and geographic analysis, neighborhood planning, and development and renovation of parks and open space. Staffs Planning Board.

▶ **Economic Development (Division of CDD)**

617-349-4637
www.cambridgema.gov/business
 Offers assistance to businesses, works to promote an environment for business growth and helps

maintain thriving commercial districts. Programs include business counseling, site search, façade improvement and best retail practices programs, and workforce support. Publishes quarterly development log.

▶ **Environmental & Transportation Planning (Division of CDD)**

617-349-4604 www.cambridgema.gov/cdd/etdiv
 Provides information and planning/implementation for streetscape improvements, traffic calming, pedestrian/bicycle programs, vehicle trip reduction and climate protection initiatives.

Cambridge Energy Alliance 617-349-5323
www.CambridgeEnergyAlliance.org

Provides outreach and education to residents and businesses regarding energy efficiency and renewable energy.

▶ **Housing (Division of CDD)**

617-349-4622 www.cambridgema.gov/housing
 Provides information and access to affordable rental and homeownership opportunities and support for affordable housing preservation and creation, home improvement loans, homeowner support, and education and financial assistance for first time homebuyers.

▶ **Cambridge Housing Authority**

617-864-3020 www.cambridge-housing.org
 Develops and manages affordable housing for low-income individuals and families. Call for information on public housing or rental assistance through the Housing Choice Voucher (Section 8) Program.

BUSINESS RESOURCES

▶ **Biotech Resources**

www.cambridgebiotech.org
 Administered by the Economic Development Division (CDD), this website provides listings helpful to the biotech industry.

▶ **Business Certificates**

City Clerk's Office 617-349-4260
www.cambridgema.gov/CityClrk
 A person, partnership or corporation conducting business in Cambridge under a name other than their own or corporate name must file a business certificate with the City Clerk's Office.

▶ **Economic Development Division 617-349-4637**

www.cambridgema.gov/business
 Programs to revitalize commercial districts, support entrepreneurship and preserve a strong employment base. Offers business development workshops and counseling, commercial façade and interior/operational improvement assistance (matching grants available), and site selection assistance.

▶ **Cambridge Chamber of Commerce 617-876-4100**

www.cambridgechamber.org

▶ **Cambridge Local First**

www.cambridgelocalfirst.org

▶ **Central Square Business Association 617-867-3211** www.centralsquarecambridge.com

▶ **East Cambridge Business Association** www.eastcambridgeba.com

▶ **Harvard Square Business Association 617-491-3434** www.harvardsquare.com

▶ **Huron Village Business Association** www.facebook.com/huronvillage

▶ **Inman Square Business Association** www.inmansquare.com

▶ **Kendall Square Association** www.kendallsq.org

▶ **Observatory Hill Neighborhood** www.observatoryhill.com

▶ **Porter Square Neighbors Association** www.portersquare.net

▶ **Office of Workforce Development 617-349-6234** www.cambridgema.gov/dhsp
 Helps employers meet their hiring needs by connecting them to adult and teen Cambridge residents looking for jobs.

▶ **Purchasing Department 617-349-4310** www.cambridgema.gov/purchasing.aspx
 Visit the Website for a list of open bids, solicitation documents and information on doing business with the City.

▶ **Dept. of Human Service Programs (DHSP)**

51 Inman Street 617-349-6200

www.cambridgema.gov/dhsp

www.facebook.com/cambridgedhsp

Provides a wide range of services that enhance the quality of life of Cambridge residents.

▶ **Adult Basic Education**

Community Learning Center

5 Western Ave

www.cambridgema.gov/dhsp/clc

617-349-6363

Provides basic literacy instruction, GED preparation, and English for speakers of other languages. Special programs include computer classes for Cambridge Housing Authority residents and homeless adults, a transition to college program, family literacy, citizenship preparation, and workplace education for local businesses.

▶ **Children, Youth & Families**

Assists with advocacy/policy, afterschool programs, community schools, family and senior events, literacy support, preschool childcare, youth programs, youth centers, teams, organizations and professional development.

Baby University

617-349-7706

Center for Families

617-349-6385

Child-Care and Family Support Services

617-349-6200

Community Schools

617-349-6200

Kids' Council

617-349-6239

Youth and Teen Programs

617-349-6200

Agenda for Children

Out of School Time Initiative

617-349-4099

Literacy Initiative

617-665-3812

Cambridge Prevention Coalition

617-349-6283

The mission of the coalition is substance abuse prevention.

▶ **Commission for Persons with Disabilities**

www.cambridgema.gov/ccpd

(Voice) 617-349-4692 (TTY) 617-492-0235

Provides information on disability and access issues, promotes equal opportunity for people with physical, mental or sensory disabilities, ensures compliance with the Americans with Disabilities Act (ADA). Publishes *AccessLetter*, a free bimonthly newsletter. Runs an occasional film series called *Disability Reframed: A Community Film Series*. Call for information on:

Temporary Disability Parking Permits

617-349-4692

Taxi Discount Coupons

617-349-4692

Trash Exemptions

617-349-4692

▶ **Employment Assistance**

Provides job search assistance to adults, including resume preparation, career counseling, interview skills training and job-readiness workshops. Services for teens include career exploration and work opportunities, including the Mayor's Summer Youth Employment Program.

Mayor's Summer Youth Employment Program 617-349-6234

Office of Workforce Development

617-349-6234

Cambridge Employment Program

617-349-6166

▶ **Housing Assistance, Homelessness & Hunger**

Multi-Service Center 617-349-6340

362 Green St.

The Multi-Service Center provides services to homeless and at-risk families and individuals, counseling as appropriate, referrals to shelter and to food programs.

Fuel Assistance Program 617-349-6252

The Fuel Assistance Program provides winter heating assistance to residents based on need.

▶ **Recreation**

Provides year-round affordable and accessible recreation opportunities for residents of all ages. The Recreation Division also manages City-wide and neighborhood-based programs and facilities. See more on page 25.

Recreation

617-349-6200

▶ **Seniors**

The Senior Centers offer enrichment, recreational and social activities, social services, meals programs, food pantry, counseling, support groups, transportation services and volunteer opportunities. Referral to home-based services and taxi coupons and other discounts are available for seniors age 60 and up.

Council on Aging

617-349-6220

Citywide Senior Ctr.

617-349-6060

806 Massachusetts Ave.

No. Cambridge Senior Ctr. 617-349-6320

2050 Massachusetts Ave.

▶ **www.CambridgeSomerville**

ResourceGuide.org 617-349-6966

An online guide to health and human service resources including 26 different service areas such as legal services, food pantries, family support, employment services, and immigration services.



The Community Learning Center helps adults improve their lives and increase their community participation through free educational programs and services.

▶ **Childcare Programs (DHSP)**
617-349-6200

Licensed preschool and after-school childcare programs offer appropriate curriculum for children 2 years and 9 months to 10 years old.

Preschool Programs (ages 2.9 - 5 years) 617-349-6254

www.cambridgema.gov/dhsp/preschools

East Cambridge Preschool

(at Kennedy/Longfellow)

Haggerty Preschool

King Open Preschool

MLK Jr. Preschool (at 359 Broadway)

Morse Preschool

Peabody Preschool

After-school Childcare Programs (K- 5th grade) 617-349-6254

www.cambridgema.gov/dhsp/afterschool

Fletcher/Maynard Afterschool

King Afterschool

Morse Afterschool

Peabody Afterschool

King Open Extended Day Program (K - 5th grade)

850 Cambridge St. 617-349-6078

Jointly sponsored by the Cambridge School Department and the Department of Human Services serving 120 children enrolled in the King Open School.

▶ **Community Schools and Neighborhood Councils**
617-349-6200

www.cambridgema.gov/dhsp/communityschools

Provides a network of neighborhood services, offering educational, cultural, social and recreational opportunities for all ages, including individuals with special needs. Community School Directors work with their Neighborhood Councils to assess community needs and design quality, cost effective Out of School Time programs, including after school enrichment classes, two extended day partnerships with the School Department, full-day summer and vacation camps, and two preschool camp programs.

Agassiz (at Baldwin School) 617-349-6287

Amigos 617-349-6315

Cambridgeport 617-349-6307

Fitzgerald (at Peabody School) 617-349-6302

Fletcher/Maynard 617-349-6295

Haggerty 617-349-6264

Harrington (at King Open) 617-349-6305

Kennedy 617-349-6308

Linnaean (at Graham & Parks) 617-349-6267

Longfellow 617-349-6260

King (at 359 Broadway) 617-349-6269

Morse 617-349-6291

Tobin 617-349-6300

▶ **Programs for Individuals with Special Needs**
617-349-6829

Weekend and summer recreation programs for children and youth with special needs. Summer programs are located in the Morse School, 14 Granite St., Cambridge. All other programs are located at the Russell Youth & Community Center, 680 Huron Avenue.

▶ **Youth Centers** 617-349-6200

www.cambridgema.gov/dhsp/youthcenters

Serves youth ages 9 - 19, developing social, recreational, leadership and academic skills at five City youth centers throughout the city. Four centers have licensed afterschool programs with separate specialized middle school programs for 9 - 13 years olds, while five centers offer teen programs with work-based learning and enrichment activities, plus sports and leisure activities for teens, 14 - 19 years old.

Area IV 243 Harvard Street 617-349-6262

Frisoli 61 Willow Street 617-349-6312

Gately 70R Rindge Avenue 617-349-6277

Moore (Teens Only) 12 Gilmore Street 617-349-6273

Russell 680 Huron Avenue 617-349-6314

▶ **Center for Families**

617-349-6385 70R Rindge Ave

www.cambridgema.gov/dhsp/cff

City-wide parent/child activities and family education/support programs.

▶ **Baby University** 617-349-7706

Parenting education and support program for families expecting a baby to children age 3.

▶ **Cambridge Prevention Coalition** 617-349-6283
www.cambridgema.gov/cpc

The mission of the coalition is substance abuse prevention.

▶ **Kids' Council** 617-349-6239

www.cambridgema.gov/kidsCouncil.aspx

Advocates for the well-being of children, youth and families; makes policy recommendations concerning programs and services.

▶ **Summer Food Program** 617-349-6252

Provides nutritious meals to any child under 19 in the summer.

▶ **City Scholarship Fund** 617-349-4220

www.cambridgema.gov/dept/finance.aspx

Provides financial assistance opportunities for eligible Cambridge residents.



The Center for Families offers families with children birth to age 8 parenting education and support programs throughout the city.

▶ **Cambridge Public Schools (CPSD)**
159 Thorndike Street 617-349-6400 www.cpsd.us
Link Line (School Closings) 617-349-6513

Cambridge has 11, K-5 elementary schools, one K-8 school, four Upper Schools (Grades 6-8), one comprehensive high school (Grades 9-12), including a career and technical education program (RSTA) and one alternative high school (HSEP).

▶ **School Registration**
CPS Family Resource Center

459 Broadway (inside Cambridge Rindge and Latin School)
617-349-6551 www3.cpsd.us/department/FRC/FRC
 Age eligibility for Kindergarten is to be 4 years old by March 31 or 5 years old by August 31. Children who are 3 by August 31 may apply for the limited number of seats available at the Tobin Montessori school. Children who are 3 years old by August 30 may apply to the Special Start program.

▶ **School Committee 617-349-6620 www.cpsd.us**

Six members of the committee are elected at large, while the Mayor serves as Chair. The committee determines overall School Department policy and budget. Meetings are held at 6 p.m. on the first and third Tuesday of each month (except July and August). They are open to the public and are telecast and rebroadcast on Cable Ch. 99.

▶ **Public Elementary Schools**

Amigos School (Grades K - 8)
 15 Upton Street 617-349-6567

Maria L. Baldwin School (Grades K - 5)
 28 Sacramento Street 617-349-6525

Cambridgeport School (Grades K - 5)
 89 Elm Street 617-349-6587

Fletcher / Maynard Academy (Grades K - 5)
 225 Windsor Street 617-349-6588

Graham & Parks (Grades K - 5)
 44 Linnaean Street 617-349-6577

Haggerty School (Grades K - 5)
 110 Cushing Street 617-349-6555

Kennedy / Longfellow School (Grades K - 5)
 158 Spring Street 617-349-6841

Dr. Martin Luther King Jr. School (Grades K - 5)
 359 Broadway 617-349-6562

King Open School (Grades K - 5)
 850 Cambridge Street 617-349-6540

Morse School (Grades K - 5)
 40 Granite Street 617-349-6575

Peabody School (Grades K - 5)
 70 Rindge Avenue 617-349-6530

Tobin Montessori School (Grades K - 5)
 197 Vassal Lane 617-349-6600

▶ **Upper Schools (Grades 6-8)**

www3.cpsd.us/ia2/ia
 Visit the website to learn more.

Cambridge Street Upper School <http://CambridgeStreet.cpsd.us>
 850 Cambridge Street (King Open School) 617-349-3050

Putnam Avenue Upper School <http://PutnamAvenue.cpsd.us>
 158 Spring Street (Kennedy-Longfellow School) 617-349-7780

Rindge Avenue Upper School
<http://RindgeAvenue.cpsd.us>
 70 Rindge Avenue (Peabody School)
 617-349-4060

Vassal Lane Upper School
<http://VassalLane.cpsd.us>
 197 Vassal Lane (Tobin School) 617-349-6550

▶ **Public High School & Special Programs**
Cambridge Rindge and Latin School (CRLS)
 459 Broadway (Grades 9 - 12)
<http://crls.cpsd.us> 617-349-6630

Rindge School of Technical Arts
<http://www.cpsd.us/RST> 617-349-RSTA

High School Extension Program
 359 Broadway
<http://www.cpsd.us/HSEP> 617-349-6880

▶ **Volunteering**
Cambridge School Volunteers
www.csvinc.org 617-349-6794

▶ **Charter Schools**
Benjamin Banneker Charter School (K-6)
 21 Notre Dame Avenue 617-497-7771

Community Charter School (Grades 7 - 12)
 245 Bent Street 617-354-0047

Prospect Hill Academy (Grades 7 - 12)
 50 Essex Street 617-284-7800

▶ **Special Education Schools**
Farr Academy
 71 Pearl Street 617-492-4922
Threshold Program Lesley Univ
 29 Everett Street 617-349-8181

▶ **Private Schools**
Boston Archdiocesan Choir (Grades 5 - 8)
 29 Mt Auburn Street 617-868-8658

Buckingham, Browne & Nichols (PK - 12)
 80 Gerrys Landing Rd 617-547-6100

Cambridge Friends School (Grades PK - 8)
 5 Cadbury Road 617-354-3880

Cambridge Montessori (Age 2 - Grade 9)
 161 Garden Street 617-492-3410

Fayerweather Street School (Grades PK - 8)
 765 Concord Avenue 617-876-4746

International School of Boston (Grades 1 - 12)
 45 Matignon Road 617-499-1451

Matignon High School (Grades 9-12)
 1 Matignon Road 617-876-1212

Shady Hill School (Grades PK - 8)
 178 Coolidge Hill 617-868-1260

St Peter Elementary School (Grades PK - 8)
 96 Concord Avenue 617-547-0101

▶ **Hospitals****Cambridge Hospital Campus**

1493 Cambridge Street 617-665-1000

Mount Auburn Hospital

330 Mount Auburn Street 617-492-3500

Spaulding Hospital (Acute & Rehabilitative Care)

1575 Cambridge Street 617-876-4344

▶ **Cambridge Health Alliance****1493 Cambridge Street 617-665-1000****www.challiance.org**

This innovative system provides high quality care throughout Cambridge. Services are available at 3 hospital campuses and many community locations - including primary care, 24-hour emergency care, surgery, medical specialties and mental health services. It is a Harvard Medical School affiliate and it operates the Cambridge Public Health Department.

CHA Doctor Finder Service 617-665-1305**Primary Care Appointment Line 617-665-1305****Mental Health Referral Line 617-591-6033**▶ **Cambridge Facilities of Cambridge Health Alliance:****Cambridge Hospital Campus**

1493 Cambridge Street 617-665-1000

Cambridge Pediatrics

1493 Cambridge Street 617-665-1264

Primary Care Center

1493 Cambridge Street 617-665-1068

Cambridge Women's Health Center

1493 Cambridge Street 617-665-2800

Cambridge Birth Center

10 Camelia Avenue 617-665-2229

Cambridge Breast Center

1493 Cambridge Street 617-665-2001

Windsor Street Health Center

119 Windsor Street 617-665-3600

Cambridge Family Health

237 Hampshire Street 617-575-5570

East Cambridge Health Center

163 Gore Street 617-665-3000

Cambridge Family Health North

2067 Massachusetts Avenue 617-575-5570

Teen Health Center

Cambridge Rindge & Latin, 459 Broadway 617-665-1548

▶ **Cambridge Public Health Department (CPHD) 119 Windsor Street 617-665-3800****www.cambridgepublichealth.org**

Responsible for protecting the health of Cambridge residents, workers and visitors. Services include communicable disease prevention and control, school health, indoor air quality inspections, hazardous waste site review, emergency preparedness, violence prevention, West Nile virus response, childhood asthma prevention, tobacco control, children's dental health, data analysis, health advocacy, and regulatory enforcement (see City Licensing). CPHD is part of the Cambridge Health Alliance.

Some Cambridge Public Health Department Programs:▶ **Environmental Health****617-665-3838**

Offers air quality investigations for residents, workers and businesses. Also addresses concerns about potential toxic exposures. Asthma counseling and home assessments are available to families of children (age 12 or younger) with asthma. Lead poisoning prevention information and home assessments are available to families with children under age 6.

▶ **Public Health Nursing****617-665-3800**

Offers free flu clinics, a tuberculosis program, vaccine distribution and health education for individuals and businesses.

▶ **Community Health & Wellness****617-665-3852**

Oversees an early literacy initiative, a men's health program, and a dental education and screening program in the elementary schools. The division also coordinates a citywide domestic violence prevention program.

▶ **CambridgeSomerville ResourceGuide.org****www.CambridgeSomervilleResourceGuide.org 617-349-6966**

An online guide to health and human service resources made possible by the Cities of Cambridge and Somerville, the Cambridge Health Alliance, the Agenda for Children, and the Somerville Community Health Foundation. Covers services including legal services, food pantries, family support, employment and immigration.

▶ **Boston Area Rape Crisis Center****99 Bishop Allen Drive
24 hour hotline 800-841-8371
www.barcc.org**

Comprehensive sexual assault services.

▶ **RESPOND, Inc.****P.O. Box 555, Somerville
617-623-5900 www.respondinc.org
Domestic violence services, including shelter.**▶ **Transition House 617-868-1650
Crisis: 617-661-7203****1035 Cambridge St., Ste. B-10
www.transitionhouse.org**

Domestic violence outreach and intervention.

- ▶ **Cambridge Police Department Emergency 9-1-1**
Non-Emergency 617-349-3300
125 Sixth St. www.CambridgePolice.org
 Committed to the enforcement of laws and preservation of order that protect the rights and property of every person within the City of Cambridge. Provides police service to impact crime through the use of new and proven crime prevention strategies and partnerships with the community.
- ▶ **Crime/Drug Tip Hotline**
617-349-3359
 A 24-hour Hotline enabling citizens to provide CPD with confidential tips about illicit drug use and distribution or any other criminal activity.
- ▶ **Community Relations Unit**
617-349-3236
 Implements basic goals of Community Policing by actively engaging the community in identifying problems and solutions, and by establishing liaisons with community groups and formal organizations.
- ▶ **Neighborhood Sergeants Program** 617-349-9339
www.CambridgePolice.org/NeighborhoodSergeants
 Neighborhood Sergeants assigned to each Cambridge neighborhood coordinate outreach and problem-solving activities within their areas.
- ▶ **Youth & Family Services Unit** 617-349-3008
 Offers support for youth and families through early intervention and by working with families to resolve issues that may lead to negative acts or crime. School Resource Officers also act as liaisons between CPD, schools, youth centers and other service providers in Cambridge.
- ▶ **Social Media / MyPD Smartphone App Available**
 Visit CPD on Facebook (www.facebook.com/CambridgePolice), Twitter (www.twitter.com/CambridgePolice) and YouTube (www.YouTube.com/CambridgePolice). “MyPD” enables users to see department news & submit crime tips from the palm of their hand. Search for “MyPD” in the iTunes Store, Android Marketplace or visit www.CambridgePolice.org/MyPD.
- ▶ **Fire Department (CFD) Emergency 9-1-1**
Non-emergency 617-349-4900 www.cambridgefire.org
 CFD has a Class I rating by the Insurance Services Office, recognizing the highest level of fire protection. Provides fire suppression, emergency medical services, heavy rescue service, hazardous materials response, water and dive rescue services, confined space rescue, etc. Call for fire prevention and safety information. CFD issues permits for smoke detectors, fire alarms, sprinklers, flammable storage, welding and torch use.
- ▶ **Emergency Communications Department**
Emergency 911 Administration 617-349-6911
www.cambridge911.org
 Operates the City’s combined Emergency Communications and 911 Center (ECC), linking residents with police, fire and emergency medical personnel responding to emergencies and other public safety concerns.

PARKS, RECREATION & CONSERVATION

- ▶ **Parks / Playgrounds / Off Leash Dog Areas** 617-349-4880
www.cambridgema.gov/TheWorks
 Cambridge has about 80 parks, playgrounds, tot-lots, and two fenced in Off Leash Dog areas at Danehy Park and Pacific St. Park. For more information, visit www.cambridgema.gov, click on Living Page under Cambridge Resources, then see Parks and Playgrounds. For maintenance requests, call the number listed above.
- ▶ **Recreation Division of DHSP**
617-349-6200
www.cambridgema.gov/dhsp/recreation
Reserve a field (athletic use) 617-349-6238
Reserve a park (non-athletic) 617-349-4846
 The City of Cambridge also maintains basketball courts, tennis courts, softball, soccer and other athletic fields. Call for information on adult softball and basketball leagues, youth and family recreational programs, pools, special needs camps, afterschool programs, and a summer program.
- ▶ **Gold Star Pool**
Berkshire & Cambridge Streets
617-349-6310
 Open July through August.
- ▶ **War Memorial Recreation Center** 617-349-6237
1640 Cambridge Street
 Offers year-round swimming and recreational opportunities.
- ▶ **Danehy Park 99 Sherman Street** 617-349-6238
 This 55-acre park includes tot lots, water play feature, picnic areas, soccer and softball fields. In September, the City hosts Danehy Park Family Day, a free event with children’s amusement rides, crafts, performers, free hot dogs and soda. Permits are required for use of athletic fields and barbeque pits.
- ▶ **Fresh Pond Reservation** 617-349-4762
 Made up of a 155-acre pond and 162 acres of surrounding land, Fresh Pond is part of the reservoir system for the City of Cambridge. Water from Fresh Pond is purified at the City’s Water Treatment Plant, providing drinking water to residents and businesses in Cambridge. Fresh Pond is a favorite gathering place for people who enjoy walking, running, bike riding, rollerblading and bird watching.
- ▶ **Fresh Pond Municipal Golf Course**
617-349-6282 www.cambridgema.gov/dhsp/golfcourse/recreation.cfm A nine-hole course located at 691 Huron Avenue.
- ▶ **Conservation Commission**
344 Broadway 617-349-4680
www.cambridgema.gov/CCC
 Protects and enhances the City’s natural resources through regulatory review, planning, advocacy and education. Also administers Wetlands Protection Act Permits and the Community Garden Program.

▶ Main Library

449 Broadway

www.cambridgepubliclibrary.org 617-349-4040

Mon - Thur. 9 a.m. - 9 p.m., Fri. and Sat. 9 a.m. - 5 p.m.

Sun. 1 - 5 p.m. (Oct. through May)

The Cambridge Public Library (CPL) holds over 100 programs each month. From children's singalongs and storytimes to author readings and special events in the Main Library's magnificent new lecture hall, there's something for everyone. Check out our calendar of events to find what you're looking for.

▶ Book Groups

From our Great Books group that reads the classics to our Chick Lit group, there's a group for everyone. They're enjoyable, informative and a fantastic way to meet individuals from our community.

▶ Library Card Benefits

A library card is easy to obtain and gives you access to over 6 million books, CDs, DVDs, magazines and online resources. You just need an ID and proof of your Massachusetts address to obtain one.

Your Cambridge Public Library card:

- Puts all the resources of the Minuteman Library Network, including 42 public and six academic libraries, at your fingertips;
- Allows you to reserve and renew items in person, by phone or online;
- Lets you borrow most books, audio books and CDs for 3 weeks and magazines and DVDs for one week with the option to renew;
- Gives you access to public computers at any Cambridge Public Library location.

▶ Museum Passes

Your library card also entitles you to reserve passes that offer discounts or free admission to museums and institutions including:

- Children's Museum
- Griffin Museum of Photography
- Harvard Natural History Museums
- Isabella Stewart Gardner Museum
- Museum of Fine Arts
- MIT Museums
- New England Zoos (Franklin Park, Stone Zoo)
- The Sports Museum
- Discovery Museums
- Harvard Art Museum
- Institute of Contemporary Art
- JFK Museum/Library
- Museum of Science
- Peabody Essex Museum
- U.S.S. Constitution Museum

The Friends of the Public Library fund many of these pass programs.

▶ Children's Collection

The children's collection includes books, music, movies, audio books, magazines, traditional and online games and multicultural resources. All children's programs are free and open to all. They feature music and storytimes for babies, toddlers and preschoolers, activities and book discussions for school-aged children, performances and events for families, and special programs for parents and caregivers.

▶ eLibrary

The Cambridge Public Library was the first library in the world to offer free, high speed internet access (beginning in 1994). This commitment to digital resources has not wavered. Each year, CPL hosts over 200,000 hours of free access to the Internet.

eLibrary services:

- Nearly 150 public access computers

- Free wireless access at all of our locations
- 24/7 access to the library catalog and your library account to reserve or renew materials
- Access to more than 30 electronic research databases
- On-site access to databases such as Ancestry.com
- Online reference assistance
- Desktop publishing and scanners (Main Library)
- Downloadable audio books and ebooks
- Mango language instruction online
- State-of-the-art computer classrooms (Main and Central Square)
- Blog for Cambridge READS, Teen Room, and Cambridge Room
- Express Lane self-checkout (Main Library only)
- Circulating preloaded Nooks
- Downloadable books for ereaders

▶ Returns

You may return library materials to any Cambridge Public Library location or other Minuteman member library. All locations have after hour return boxes.

▶ Library Branch Locations: (See Website for hours)

Boudreau Branch

245 Concord Avenue 617-349-4017

Central Square Branch

45 Pearl Street 617-349-4010

Collins Branch

64 Aberdeen Avenue 617-349-4021

O'Connell Branch

48 Sixth Street 617-349-4021

O'Neill Branch

70 Rindge Avenue 617-349-4023

Valente Branch

826 Cambridge Street 617-349-4015



A group in the Teen Room filming a video of the "Harlem Shake" while the teen librarians attempt to shush them.

PUBLIC TRANSPORTATION

▶ **Massachusetts Bay Transportation Authority (MBTA)**
800-392-6100, 617-222-3200
www.mbta.com

▶ **Bus Routes**

Fare is typically \$1.50 with CharlieCard. Includes free transfer to local bus, discounted transfer to subway or express bus. Some “zoned local” routes or longer rides cost more. Ticket/Cash Fare is \$2.

▶ **Subway (the “T”)**

Cambridge is served by the red and green lines. Cambridge stations are: Alewife, Porter, Harvard, Central and Kendall on the red line, and Lechmere on the green line. With some exceptions, the fare is

\$2.00 with CharlieCard (includes free transfer to local bus, discounted transfer to express bus). Ticket/Cash Fare is \$2.50.

▶ **Commuter Rail**

Beginning at North Station, the Fitchburg Line connects Porter Square with stops including Belmont, Concord, and Ayer, ending in Fitchburg.

▶ **Cambridge-North Station EZRide Shuttle**

617-8EZ-Info 617-517-9740 www.EZRide.info
A service of the Charles River Transportation Management Association (CRTMA). EZRide connects with the MBTA at North Station, Lechmere and Kendall Square, and with several Cambridge destinations such as the Galleria and University Park. It operates every 10 minutes during peak hours, Monday-Friday, except holidays. Cash fare is \$2.

▶ **Hubway 1-855-4HUBWAY**

www.cambridgema.gov/hubway www.thehubway.com
Regional Bike share program with multiple stations in Cambridge and connecting stations in neighboring communities.

REGISTRY OF MOTOR VEHICLES

▶ **Massachusetts Registry of Motor Vehicles (RMV)** 617-351-4500 www.massrmv.com

Boston RMV (full service) 630 Washington Street, Boston
Details such as hours of operation and services available at various branches, as well as current wait times, are available at the Website listed above by clicking on the “Branch Info” tab.

▶ **Driver’s License**

If you have moved to Cambridge from out of state, you must obtain a Massachusetts driver’s license. Visit the RMV Website and click on “Converting an Out-of-State License” to obtain an application and a list of the documents you will need to bring to an RMV office. If you have moved to Cambridge from elsewhere in the state, notify the Registry of your address change within 30 days.

▶ **Vehicle Registration**

You must register your vehicle in Massachusetts as soon as you become a Massachusetts resident. A full description of the registration process is provided at www.massrmv.com/rmv/regs.

▶ **Vehicle Inspection**

Your vehicle must undergo a safety and emissions inspection within 7 days of registration. For information or to find a nearby inspection station, visit www.massvehiclecheck.state.ma.us, then click on “Mass Vehicle Check Inspection Station Locator.”

POST OFFICE

Post Office
800-275-8777 www.usps.com

**Main Branch: Central Square,
770 Massachusetts Avenue**

Branch Offices: Harvard Square, Porter Square, Kendall Square, Inman Square, East Cambridge and MIT

TRANSPORTATION RESOURCES

▶ **Accessible Cambridge Taxi (ACT)**
866-654-1003
www.checkercabcambridge.com

The City’s License Commission works with a dispatch service company that provides wheelchair-accessible taxicab service 24 hours a day, seven days a week. Various Cambridge-based taxicab companies participate in the ACT program.

▶ **Cambridge Taxicab Companies**

Ambassador Brattle	617-492-1100
Cambridge Cab Company	617-252-3333
Checker Cab	617-497-9000
Classic Cab	617-492-0555
Star Taxi	617-876-8888
UTS Cab	617-661-2500
Yellow Cab	617-547-3000

▶ **Taxi Discount Coupons**

Taxi coupons are available for Cambridge residents who are elderly or have disabilities. Residents who are 60+ should call the Council on Aging at 617-349-6220 (voice) or 617-349-6050 (TTY). Residents with disabilities should call the Commission for Persons with Disabilities at 617-349-4692 (voice) or 617-492-0235 (TTY).

▶ **Car Sharing & Bicycle Delivery**

While not managed by the City of Cambridge, car sharing, hourly car rental and bicycle delivery businesses help keep Cambridge a walkable city, benefiting all of us. Some options include:

Connect by Hertz	www.connectbyhertz.com
Metro Pedal Power	www.metropedalpower.com
Enterprise Car Share	www.enterprise-carshare.com
Relay Rides	www.relayrides.com
Zipcar	www.zipcar.com

▶ **Arts, Historical, Music, Tourism Organizations**

Cambridge Art Association
617-876-0246 www.cambridgeart.org

Cambridge Arts Council (CAC)
617-349-4380 www.cambridgeartscouncil.org
For Street Performer permits, artist grants, public art commissions, cultural events and artist/performer resources.

Cambridge Artists Coop
617-868-4434 www.cambridgeartistscoop.com

Cambridge Center for Adult Education
617-547-6789 www.ccae.org

Cambridge Historical Commission
617-349-4683 www.cambridgema.gov/Historic
Administers historic districts and landmarks; provides technical assistance on historic preservation; and maintains an archive of the City's architectural and social history (researchers should call for an appointment). Grants are available for eligible low/moderate income homeowners and non-profit agencies with historic properties.

Cambridge Historical Society
617-547-4252 www.cambridgehistory.org

Cambridge Multicultural Arts Center
617-577-1400 www.cmacusa.org

Cambridge Office for Tourism
617-441-2884 www.cambridge-usa.org
Call for information on dining, entertainment, lodging, shopping, special events and more.

New School of Music
617-492-8105 www.cambridgemusic.org

Longy School of Music of Bard College
617-876-0956 www.longy.edu

Passim School of Music
www.passim.org

▶ **Museums**

Gray Herbarium, Harvard
617-495-2365 www.huh.harvard.edu

Harvard University Art Museums
617-495-9400 www.artmuseums.harvard.edu
During the renovations, selected works from the Fogg, Busch-Reisinger, and Sackler collections are on display at the Arthur M. Sackler Museum.

Harvard Museum of Natural History
617-495-3045 www.hmn.harvard.edu

Longfellow National Historic Site
617-876-4491 www.nps.gov/long

MIT-List Visual Arts Center
617-253-4680 web.mit.edu/lvac

MIT Museum
617-253-9607 web.mit.edu/museum

Peabody Museum of Archaeology & Ethnology
617-496-1027 www.peabody.harvard.edu

▶ **Galleries**

AIB Gallery @ University Hall 617.585.6600
www.lesley.edu/aib/portfolio/index.html

Cambridge Arts Council Gallery
617-349-4380 344 Broadway
www.cambridgeartscouncil.org

Cambridge Multicultural Arts Center
617-577-1400 www.cmacusa.org

Chandler Gallery
617-349-6287

Gallery 263
www.gallery263.com

Mobius
617-945-9481 www.mobius.org

Out of the Blue Art Gallery
617-354-5287 www.outoftheblueartgallery.com

▶ **Theaters**

Actors' Shakespeare Project
617-776-2200 www.actorsshakespeareproject.org

American Repertory Theatre
617-547-8300 www.amrep.org

Brattle Theatre
617-876-6837 www.brattlefilm.org

Central Square Theater
617-576-9278 www.centralsquaretheater.org

ImprovBoston Theater
617-576-1253 www.improvboston.com

Sanders Theatre
Harvard Box Office: 617-496-2222

▶ **Community Television***

Cambridge Community Television (CCTV) Channels 8, 9 and 96
617-661-6900 www.cctvcambridge.org
Offering three community access cable channels, CCTV is a public forum for Cambridge residents, businesses and organizations.

Cambridge Educational Access Channels 98 and 99
www.cpsd.us/ceatv/channels.htm
Programming for Cambridge Public Schools. SMART TV98 cablecasts educational programs, original work from students, school events and more. CPS TV 99 offers school news and more.

22-CityView (Municipal Channel)
Channel 22 617-349-4296
www.cambridgema.gov/dept/cable.html
Provides both original and acquired programming drawn from and relating to the City of Cambridge. City Council meetings are broadcast live on Mondays and repeated during the week.

* Reflects Channel Changes.

To view more Cambridge arts and culture organizations, please visit www.cambridgeartscouncil.org

▶ **Cambridge is full of various resources and volunteer opportunities. See a sampling of organizations below.**

American Friends Service Committee

2161 Massachusetts Avenue 617-661-6130 www.afsc.org

Breakthrough Cambridge

158 Spring Street 617-349-6647 www.breakthroughcambridge.org

Cambridge Camping Association

99 Bishop Richard Allen Dr. 617-864-0960 www.cambridgecamping.org

Cambridge Cares About AIDS

17 Sellers Street 617-661-3040 www.ccaa.org

Cambridge Community Center

5 Callender Street 617-547-6811 www.cambridgecommunitycenter.org

Cambridge Community Services 99 Bishop Allen Drive

617-876-5214 www.cambridgecommunity.org

Cambridge Economic Opportunity Committee

11 Inman Street 617-868-2900 www.ceoccambridge.org

Cambridge Family & Children's Service

60 Gore Street 617-876-4210 www.helpfamilies.org

Cambridge Family YMCA

820 Massachusetts Avenue 617-661-9622 www.cambymca.org

Cambridge School Volunteers

459 Broadway 617-349-6794 www.csvinc.org

Cambridge Senior Volunteer Clearinghouse

42 Brattle Street 617-864-6688

Charles River Conservancy

4 Brattle Street 617-608-1410 www.charlesriverconservancy.org

Child Care Resource Center, Inc.

130 Bishop Allen Drive 617-547-1063 www.cccinc.org

City Sprouts

678 Mass. Ave. 617-876-2436 www.citysprouts.org

Community Dispute Settlement Center

60 Gore Street 617-876-5376 www.communitydispute.org

Community Learning Center 5 Western Avenue

617-349-6363 www.cambridgema.gov/dhsp/clc

East End House 105 Spring Street

617-876-4444 www.eastendhouse.org

Friends of Fresh Pond Reservation

250 Fresh Pond Parkway 617-349-6391 www.friendsoffreshpond.org

Food For Free 11 Inman St.

617-868-2900 www.foodforfree.org

HomeStart, Inc.

678 Massachusetts Avenue, Suite 502 617-234-5340 www.homestart.org



Friends of Fresh Pond Reservation is a volunteer citizens' group that works with the Cambridge Water Department and Cambridge Public Schools and offers a number of activity-based programs designed to develop nature observation skills and build community at Fresh Pond Reservation, one of Cambridge's largest outdoor open space areas.

Margaret Fuller House 71 Cherry St.
617-547-4680 www.margaretfullerhouse.org

Massachusetts Alliance of Portuguese Speakers 1046 Cambridge Street
617-864-7600 www.maps-inc.org

On the Rise 341 Broadway
617-497-7968 www.ontherise.org

St. James' Episcopal Church Food Pantry and Meal Program
1991 Massachusetts Avenue 617-876-4381

Salvation Army Shelter and Meals Program
402 Massachusetts Avenue 617-547-3400

Somerville-Cambridge Elder Services
61 Medford Street, Somerville
617-628-2601 www.eldercare.org

Tutoring Plus 225 Windsor St.
617-349-6588 x422 www.tutoringplus.org

Wellmet Project
130 Bishop Allen Drive 617-491-2377
www.wellmetproject.com

The Women's Center
46 Pleasant Street 617-354-6394
www.cambridgewomenscenter.org

YWCA Cambridge
7 Temple Street 617-491-6050
www.ywcacam.org

▶ Here is a sampling of upcoming events in Cambridge. For additional information, visit www.cambridgema.gov.

June

Cambridge/Mass. Farmers Markets Seasonal

www.massfarmersmarkets.org

Enjoy fresh local produce year-round at several farmers market locations throughout Cambridge.

Cambridge River Festival 6/1

www.cambridgeartscouncil.org

Featuring live music, visual arts, theatrical and dance performances, family entertainment, art-making activities and workshops, crafts, international food and more! Free. Memorial Drive, along the Charles River. Noon to 6 p.m. Rain Date 6/2.

Fresh Pond Day 6/8

www.cambridgema.gov/CWD

The culmination of water week is Fresh Pond Day at 250 Fresh Pond Parkway. Enjoy activities for all ages, including nature walks, water facility tours, demonstrations and displays. 11 a.m. – 3 p.m.

Household Hazardous Waste Collection 6/8

Cambridge Public Works www.cambridgema.gov/TheWorks

Parking Lot at Danehy Park at the intersection of Field and Fern Streets. Cambridge residents only; proof of residency required. 9 a.m. – 1 p.m.

Dance for World Community 6/8

www.danceforworldcommunity.org

617-354-7467

Free indoor/outdoor event for everyone to gather and “celebrate the power of dance to create social change.” Cambridge Common. Noon-10 p.m.

Dragon Boat Festival 6/8 – 6/9

www.bostondragonboat.org

Event on the Charles River featuring dragon boat races, crafts demonstrations, music, dance, martial arts and Asian foods. Free. 10 a.m. – 6 p.m.

Taste of Cambridge 6/13

www.tasteofcambridge.com

The annual food extravaganza on Sidney St. in Central Square. 5:30 – 8:30 p.m. Rain Date 6/18.

Hoops ‘N’ Health 6/15

Cambridge Public Health Dept.

617-665-3769

Basketball/flag football tournament and health fair at Hoyt Field (1-5 p.m.).

Free food, music and children’s games. Free, open to the public. 10 a.m. – 6 p.m.

Make Music Central Square 6/21

www.cac.org

Carl Barron Plaza, City Hall Lawn & Jill Brown-Rhone Park. Organized by Central Sq. Bus. Assoc. & Cambridge Arts Council. 11 a.m. – 10 p.m.

Make Music Harvard Square 6/22

www.harvardsquare.com

Harvard Sq. Bus. Assoc. Noon – 10 p.m.

Special State Election 6/25

www.cambridgema.gov/election

617-349-4361

Call for voter registration information or polling locations.

City of Cambridge Dance Party 6/28

www.cambridgema.com

617-349-4301

Dance in the street in front of City Hall at this Friday night dance party for the entire Cambridge community. 7 – 11 p.m.

Library Summer Reading Programs

www.cambridgema.gov/cpl

617-349-4409

Programs for children and teens.

SEE MORE CALENDAR LISTINGS AT WWW.CAMBRIDGEMA.GOV

Find City sponsored programs, classes and events in the City Calendar of the website. On this calendar, you can view listings by category for a particular date, such as only public meetings. Look for additional city and community events on the Community Events Calendar managed by the Cambridge Office for Tourism. This link can be found in the Community Resources section toward the bottom of the City’s website.



CAMBRIDGE PUBLIC LIBRARY HAS SOMETHING FOR EVERYONE!

www.cambridgepubliclibrary.org

The Main Library and the six branch libraries offer over 100 programs/month. From story times and book groups to major author appearances and special events, there is something for everyone. Visit our website to see what’s happening and learn about our many resources and services, including ebooks, databases, free museum passes and Oscar winning films. At the Main library, borrow a pre-loaded Nook, visit the new Cambridge Room archive or use the new Braille printer.



CAMBRIDGE ALERT NETWORK

www.CambridgeMA.gov/AlertNetwork

Cambridge Alert Network communicates City information through three notification services. **CodeRED** notifies subscribers via land line/cell phones, text messages and emails in the event of City emergencies, including snow emergencies and major service disruptions. All Cambridge land lines are automatically registered with **CodeRED**. **Citizen Observer** is used by Cambridge Police Dept. to send email and text alerts to subscribers about emerging crime patterns, neighborhood meetings, crime-prevention, etc. **Cambridge E-Line** sends routine

reminders via email and text message, such as trash/recycling pick-up, street cleaning and other City information. To register, visit the website or call 617-349-9490.

CAMBRIDGE
ALERT
NETWORK

July

Friends of Fresh Pond

www.friendsoffreshpond.org

Enjoy nature events at Cambridge's largest open space area.

Boston's Fourth of July 7/4

www.july4th.org/2013_Program/Event_Schedule

Fireworks spectacular over the Charles River can be viewed from Cambridge side.

Summer in the City

www.cambridgearts council.org 617-349-4380

An array of multicultural and interactive performances throughout the City's public spaces featuring dance, music, storytellers, theater and puppetry for children ages 4 – 11. Free and open to the public.

Family Nights in the Park Every Weds

www.cambridgema.gov/dhsp 617-349-6200

Movies and more in Cambridge parks.

Household Hazardous Waste Collection 7/13

www.cambridgema.gov/TheWorks

See June listing for details. 9 a.m. -1 p.m.

Cambridge Discovery Days:

Revolutionary Cambridge 7/13- 7/14

www.cambridgema.gov/historic 617-876-4491 x12

Explore all kinds of Cambridge revolutions, from scientific innovations and modern architecture, to the Revolutionary War. 7/14: Revolutionary War Encampment in Longfellow Park with special guest, General George Washington.

August

Summer in the City

www.cambridgearts council.org 617-349-4380

An array of performances. See July listing.

Family Nights in the Park Every Weds

Dept. of Human Services 617-349-6200

www.cambridgema.gov/dhsp

Movies and more in Cambridge parks.

Inman Funch Every Thursday in Aug

www.inmansquare.com

Bring your lunch and enjoy free music and wellness activities at Vellucci Plaza, Inman Square (corner of Hampshire & Cambridge St.).

Central Swings - Thursday nights in Aug.

www.centralsquare.com

An outdoor celebration of music, dance, theater and street performances featuring Central Square cultural institutions and talent every Thursday, at Jill Rhone-Brown Plaza. 5 - 7 p.m.

Night Out Against Crime 8/6

Annual crime and drug prevention event. Riverside Press Park. 5 - 8 p.m

September

Cambridge Carnival 9/8

A festive celebration rooted in African traditions and featuring a dazzling costume parade, music, dancing, food and more in Kendall Square. Noon - 7 p.m.

Cambridge Reads 2013

9/18

Author Program featuring Edwidge Danticat, author of *Claire of the Sea Light*. Sanders Theater. 7 p.m.

PARK(ing) Day

9/20

www.cambridgema.gov/cdd

An annual worldwide event encouraging citizens to transform metered parking spots into temporary public parks.

Danehy Park Family Day

9/21

www.cambridgema.gov

Enjoy a fun-filled day of children's amusement rides, arts and crafts, music and roving performers, plus free hot dogs, chips, sodas and T-shirts while supplies last! Amusement rides, roving performers, Children's stage. Free hot dogs, chips, soda. Free and open to the public from 11 a.m. - 4 p.m.

Fall Bike Ride

9/29

www.cambridgebikes.org

Discover new places on themed bike tours organized by the Cambridge Bicycle Committee.

October

Cambridgeport History Day

10/5

www.cambridgehistory.org

617-547-4252

Tours, exhibits, demos on Working in Cambridgeport, 1913.

Oktoberfest and Honk Festival

10/13

www.harvardsquare.com

Featuring six stages of live entertainment, food, art, jewelry, vintage clothing. Cambridge Common & Winthrop Park, Harvard Square. Noon - 6 p.m.

Household Hazardous Waste Collection

10/19

Cambridge Public Works

www.cambridgema.gov/TheWorks

See June listing for details. 9 a.m. - 1 p.m.

Head of the Charles Regatta

10/19

www.hocr.org

617-868-6200

World's largest 2-day regatta attracts more than 8,000 racers from around the world. The races take place along the Charles River. 8 a.m - 4:30 p.m.

November

Children's Book Drive

11/1 - 12/31

www.cambridgema.gov/cpl

Donate new children's books (ages birth through 18) at the Main Library for children living in family shelters. Books will be delivered during the holidays.

Family Literacy Fun Day

11/2

www.cambridgema.gov/dhsp/cff

617-349-6200

Fun activities for families, including: face painting, literacy games, sing-alongs, giveaways, and a magician., plus a light lunch. City Hall. 10:30 a.m. - 2:30 p.m.

Municipal Election

11/5

www.cambridgema.gov/election

617-349-4361

Call Election Commission for voter registration info or polling locations.

Veterans' Day Observance

11/11

Cambridge Veteran's Services

www.cambridgema.gov/VET

Join us in the Cambridge Cemetery at 11 a.m. as we gather to honor our veterans, past and present, for their service to our country.

December

SparkleFest

events all month long

www.harvardsquare.com

617-491-3434

Month-long celebration of the holidays. Many events in Harvard Square.

Shop Inman by Moonlight

12/12

www.inmansquare.com

Events and activities at Inman Square. 6 p.m.- Midnight.



CITY OF CAMBRIDGE

795 Massachusetts Avenue, Cambridge, MA 02139
www.cambridgema.gov | 617-349-4300 | 617-349-4242 TTY

City Manager Robert W. Healy
Deputy City Manager Richard C. Rossi

City Council

Mayor Henrietta Davis
Vice Mayor E. Denise Simmons
Councillor Leland Cheung
Councillor Marjorie C. Decker
Councillor Craig A. Kelley

Councillor David P. Maher
Councillor Kenneth E. Reeves
Councillor Timothy J. Toomey, Jr.
Councillor Minka vanBeuzekom



JOIN US IN THE CITY

COME TO EAT, COME TO DANCE, COME TO PLAY

34th CAMBRIDGE RIVER FESTIVAL

A celebration of the arts and summertime fun along the Charles River
June 1, 2013 Noon – 6 p.m.
www.cambridgeartscouncil.org
(617) 349-4380

CITY OF CAMBRIDGE DANCE PARTY

Dance in the street in front of City Hall at this Friday night dance party for all of Cambridge.
June 28, 2013 7 – 11 p.m.
www.cambridgema.gov
(617) 349-4301

SUMMER IN THE CITY

A mix of dance, song, storytelling, theater and puppetry presented in City parks and public spaces.
July and August, 2013
www.cambridgeartscouncil.org
(617) 349-4380

DANEHY PARK FAMILY DAY

Enjoy crafts, amusement rides, free hot dogs and sodas, music, performers and more!
September 21, 2013 11 a.m. – 4 p.m.
www.cambridgema.gov
(617) 349-4301

