



# Cambridge Police Department BridgeStat

July 2014

Produced by the Crime Analysis Unit



# Part I Total Crime

With nearly 300 fewer Part One Index incidents reported in Cambridge over the first seven months of 2014, serious crime has tumbled down 17% when compared with the same time frame in 2013. When measured against the 5-year weighted average, a substantial 24% decrease in serious crime has also been registered.

The property crimes of larceny & burglary continue to be the key indicators and the driving forces behind the overall downward spiral of crime. **The index crime of larceny has dropped 18% and a 28% reduction in burglary has been reported.** Housebreaks (-33%), larceny from motor vehicles (-27%), and larceny from the person (-46%) were the categories of incident types fueling the declining crime numbers.

All of the positive news regarding crime in July was marred by the commission of the second homicide of 2014 in Cambridge. A 22-year-old Cambridge man was found on Windsor Street on July 3<sup>rd</sup> with a gunshot wound to his head. Kensley David died one day later at Mass General Hospital. David's death remains under investigation.

	4 Week Snapshot			Year to Date			Five Year	
	06/03-06/30	07/01-07/28	Change	2013	2014	Change	Avg	Change
Total Violent Crime	30	18	-40%	194	162	-16%	220	-26%
Total Property Crime	212	191	-10%	1522	1256	-17%	1645	-24%
<b>Total Part I Crime</b>	<b>242</b>	<b>209</b>	<b>-14%</b>	<b>1716</b>	<b>1418</b>	<b>-17%</b>	<b>1864</b>	<b>-24%</b>



# Part I Property Crime

Property crime is exhibiting a 17% decrease below the number reported for the first seven months of 2013 and recorded a considerable 24% decline below the five-year average. The only property categories to register increases so far this year are small increases in auto theft, larcenies from residence, and larcenies of license plates. Eleven of the fifteen indexes associated with property crime are in the green (on the decline) so far in 2014. The rise in auto theft can be attributed to the historically low total associated with 2013 for this crime type.

Cambridge Police BridgeStat

July 2014

	4 Week Snapshot			Year to Date			Five Year	
	06/03-06/30	07/01-07/28	Change	2013	2014	Change	Avg	Change
<b>Burglary</b>	<b>22</b>	<b>23</b>	<b>5%</b>	<b>202</b>	<b>146</b>	<b>-28%</b>	<b>248</b>	<b>-41%</b>
Commercial Break	2	3	50%	31	31	0%	42	-26%
Housebreak	20	20	0%	171	115	-33%	205	-44%
<b>Larceny</b>	<b>174</b>	<b>156</b>	<b>-10%</b>	<b>1262</b>	<b>1041</b>	<b>-18%</b>	<b>1320</b>	<b>-21%</b>
Larceny (Misc)	6	3	-50%	15	17	13%	18	-6%
Larceny from Building	20	22	10%	226	195	-14%	221	-12%
Larceny from MV	36	24	-33%	309	226	-27%	358	-37%
Larceny from Person	16	12	-25%	204	111	-46%	196	-43%
Larceny from Residence	10	19	90%	86	101	17%	106	-5%
Larceny of Bicycle	61	50	-18%	184	173	-6%	182	-5%
Larceny of Plate	2	1	-50%	13	19	46%	21	-10%
Larceny of Services	0	0	IN-CALC	12	6	-50%	12	-50%
Shoplifting	23	25	9%	213	193	-9%	207	-7%
<b>Auto Theft</b>	<b>16</b>	<b>12</b>	<b>-25%</b>	<b>58</b>	<b>69</b>	<b>19%</b>	<b>77</b>	<b>-10%</b>
<b>Total Property Crime</b>	<b>212</b>	<b>191</b>	<b>-10%</b>	<b>1522</b>	<b>1256</b>	<b>-17%</b>	<b>1645</b>	<b>-24%</b>



# Part I Violent Crime

The five-year weighted average for violent crime in Cambridge for the first seven months of the year is 220 incidents. For the first seven months of 2014, there were 162 violent crimes recorded in the City, 32 incidents below last year (-16%) and 58 violent crimes under the total forecasted for this period (-26%).

Street robbery dropped an unfathomable 55% when compared with 2013 and an astounding 60% when measured against the 5-year weighted average with no spatial or temporal patterns identified so far in 2014. There has not been a street robbery on a weekend night this entire summer in Cambridge. Aggravated assaults have declined 9% with 10 fewer incidents counted for the first seven months of the year.

Cambridge Police BridgeStat

July  
2014

	<u>4 Week Snapshot</u>			<u>Year to Date</u>			<u>Five Year</u>	
	06/03-06/30	07/01-07/28	Change	2013	<b>2014</b>	Change	Avg	Change
Homicide	0	1	IN-CALC	2	2	0%	1	100%
Rape	3	3	0%	13	18	38%	16	13%
Robbery	6	3	-50%	65	38	-42%	72	-47%
Commercial Robbery	2	1	-50%	14	15	7%	14	7%
Street Robbery	4	2	-50%	51	23	-55%	58	-60%
Aggravated Assault	21	11	-48%	114	104	-9%	131	-21%
<b>Total Violent Crime</b>	<b>30</b>	<b>18</b>	<b>-40%</b>	<b>194</b>	<b>162</b>	<b>-16%</b>	<b>220</b>	<b>-26%</b>



# MURDER

No Patterns

- Kensley David, 22, suffered a single gunshot wound to the head after a shooting on Windsor Street in Cambridge around 10 p.m. on July 3<sup>rd</sup>. It was the second homicide of 2014 in Cambridge. Investigators believe that the incident was not random. Cambridge police, State Police, and the District Attorney's office urge anyone with information about the shooting to contact authorities.
- The first murder of 2014 involved Malia Gomez, 40, of 396 Putnam Ave, who has been charged in the death of Dana Robinson. Gomez admitted to stabbing Robinson following an argument on February 2<sup>nd</sup>. Robinson died at Beth Israel Hospital and Gomez was charged with armed assault with the intent to murder, assault and battery with a dangerous weapon, and assault and battery with a dangerous weapon causing serious bodily injury. On April 1<sup>st</sup>, 2014, Malia Gomez was indicted on First Degree Murder.
- 30 of the 37 murders in Cambridge since 1995 have been cleared by arrest or by the suicide of the perpetrator, which translates to an 81% clearance rate.

## Percent Change\*

Last 4 Weeks

In-calc

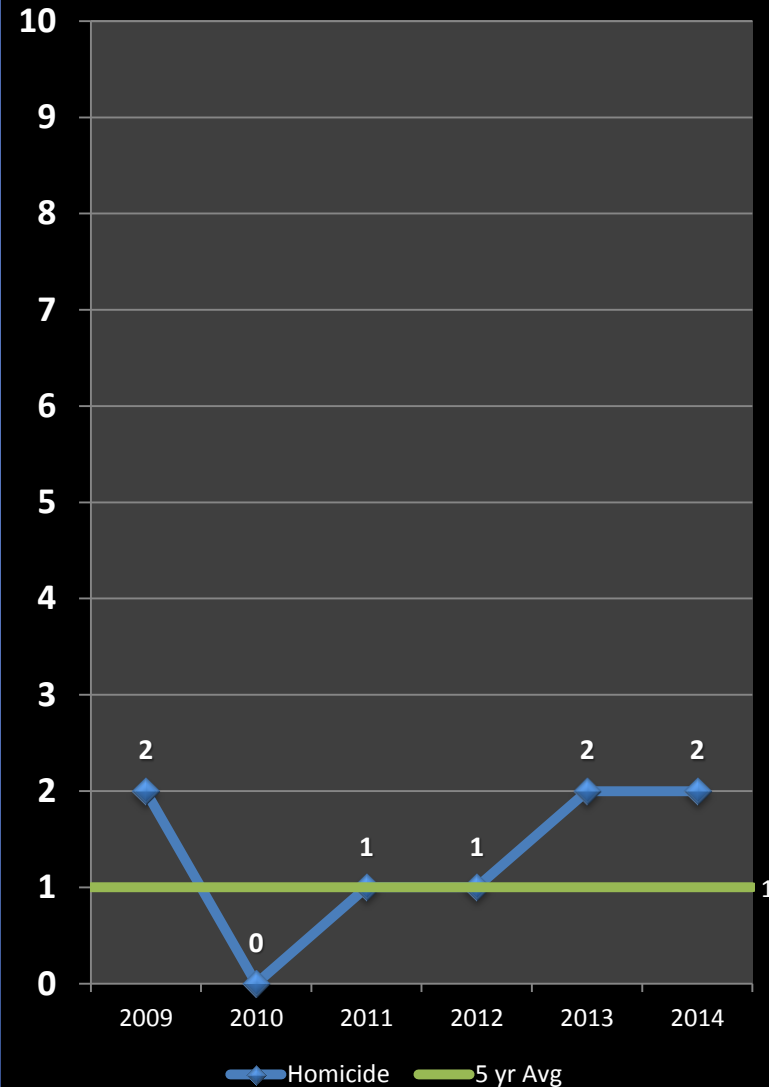
Previous Year

0%

5 Year Average

In-calc

\*IN -CAL: Percentages are not calculated for numbers so small as to present a statistically misleading percentage.







# Unsolved Murders: 1999 to 2013

**Colin Burton**, 30, of Dorchester, was shot and killed outside of Hi - Fi Pizza on Mass Ave in Central Square on September 18<sup>th</sup>, 1999. Burton was talking with the occupants of a Ford Explorer when the subject in the passenger seat fired through the window. Two suspects fled the scene. The case remains under active investigation.



September 18, 1999, Mass Ave



April 5, 2002, Mass Ave

**Ian Gray**, 19, of Mattapan, was in an argument outside of the Rhythm & Spice restaurant that spilled out onto Mass Ave. A suspect that had left the scene returned with a group of people and a fight ensued. A knife was produced during the altercation and four gunshots were fired, fatally wounding Gray. This case remains open.

On June 17<sup>th</sup>, 2002 at 7:00PM, **Ricardo Williams**, 27, of Malden, was found in the driver's seat of a motor vehicle suffering from a gunshot wound to his face. Williams was taken to CCH where he was pronounced dead. This case remains open.



June 17, 2002, Windsor St.

**\*Anyone with information about these crimes is asked to contact CPD at 617-349-3370.\***



# Unsolved Murders: 1999 to 2013

**Jason Ellcock**, 33, of Malden, formerly of Cambridge and father of three, was found with multiple gunshot wounds in front of the driveway to 364 Rindge Ave at 3:05 AM on the night of June 16<sup>th</sup>, 2009. He was pronounced dead at the scene. This incident remains under investigation.



June 16, 2009, Rindge Ave



March 12, 2011, Brookline St.

**James Lauture**, 30, of Cambridge, was sitting in a vehicle near Brookline and Watson Streets just after midnight on Saturday, March 12<sup>th</sup>, 2011, when an unknown gunman opened fire. The occupants in the car were able to drive to Central Square. Lauture died from multiple gunshot wounds. The other man in the vehicle survived. This case remains open.

On June 3<sup>rd</sup>, 2012, **Charlene Holmes**, 16, of Cambridge was shot while sitting on a porch on Willow Street. She later succumbed to her wounds at the hospital. The investigation into this incident remains active, but no arrests have been made to date.



June 3, 2012, Willow St

**\*Anyone with information about these crimes is asked to contact CPD at 617-349-3370.\***



# RAPE

No Patterns

### Percent Change\*

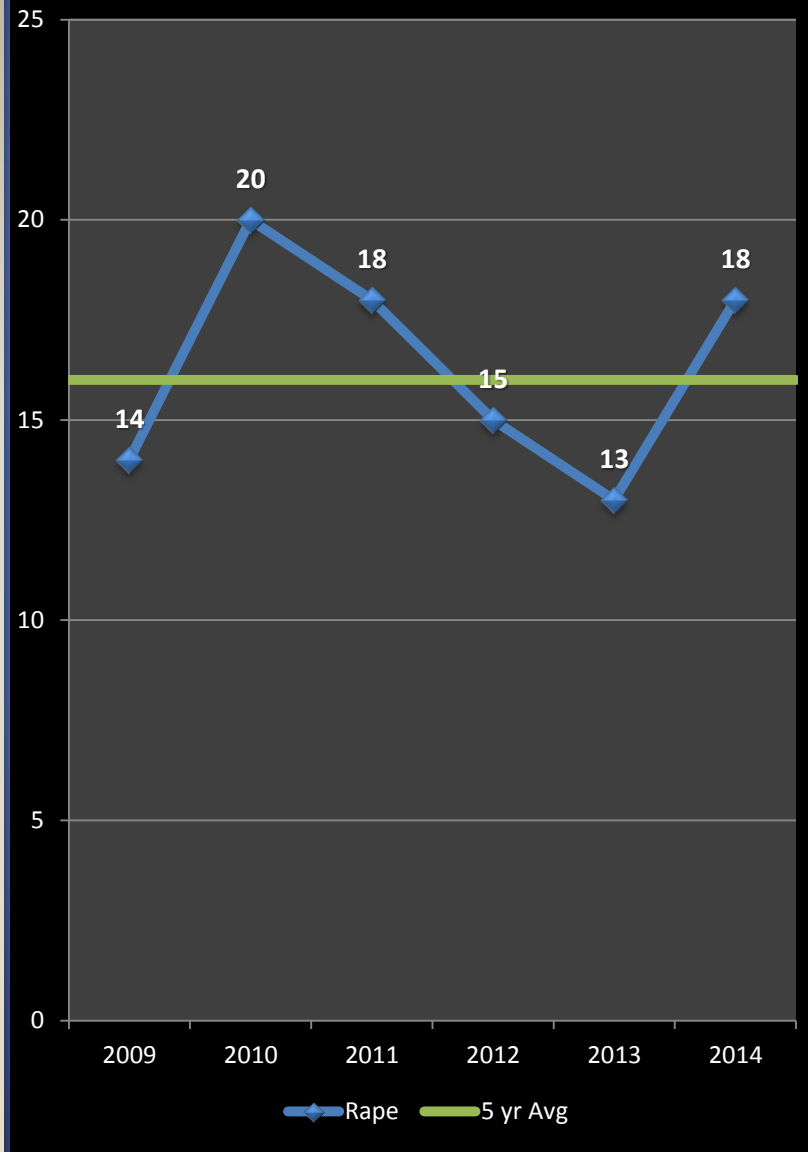
Last 4 Weeks  
**0%**

Previous Year  
**+38%**

5 Year Average  
**+13%**

\*IN -CAL: Percentages are not calculated for numbers so small as to present a statistically misleading percentage.

- The violent index crime of Rape has increased from 13 incidents in the first seven months of 2013 to 18 reported crimes over the same time frame for 2014.
- In January of 2014, three rapes were recorded in Cambridge. Three more non-stranger rapes were reported in March. The first attempted stranger rape of the year occurred on Richdale Ave on April 16<sup>th</sup>. The other rapes during April included two acquaintance incidents, a domestic scenario, and one yet to be classified. The lone rape reported in Cambridge in May was classified as a contact-related incident. There were three rapes reported in Cambridge during June: two acquaintance scenarios and a domestic.
- The three rapes that were recorded in Cambridge during July of 2014 were categorized as a contact scenario, a domestic incident, and a crime involving an acquaintance.
- The following is the breakdown of Rape classifications in Cambridge so far in 2014: one stranger to stranger, seven involving acquaintances; three contact situations; three domestic sexual assaults; and four incidents that are still under investigation and have yet to be classified.







# ROBBERY

*No Patterns*

## Percent Change

Last 4 Weeks

**-50%**

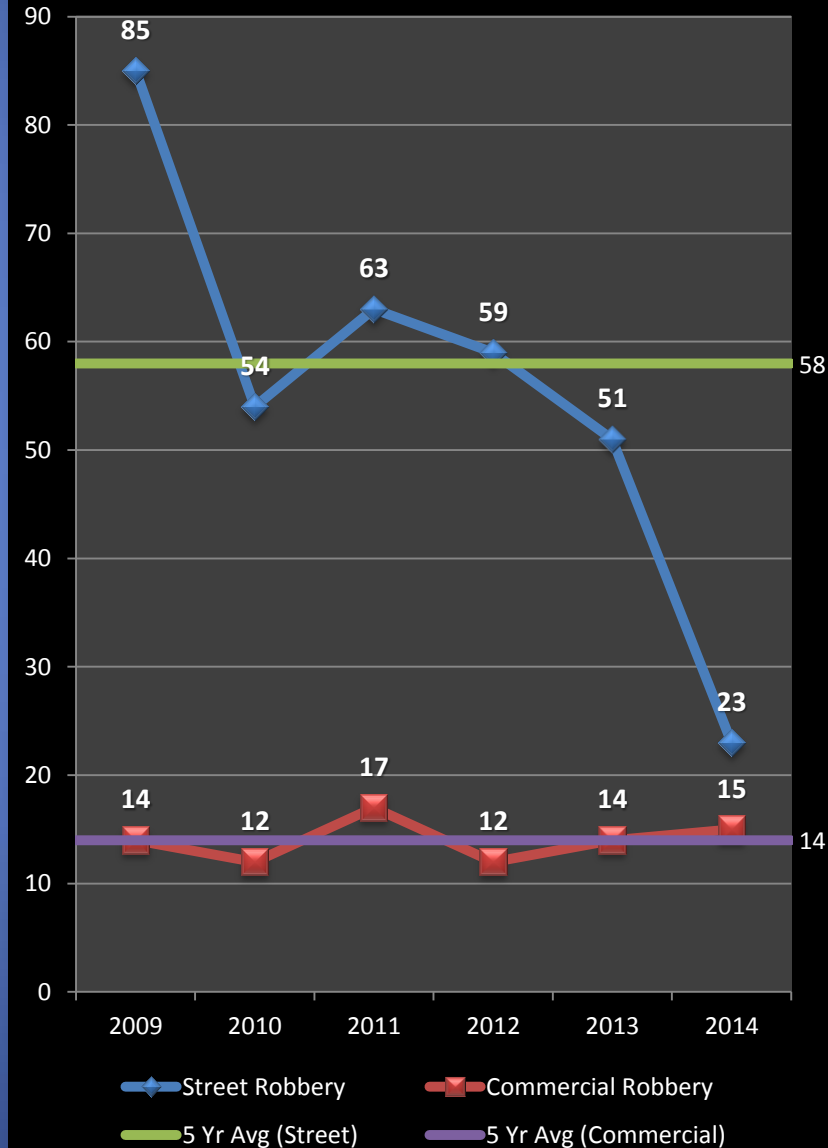
Previous Year

**-42%**

5 Year Average

**-47%**

- The five-year average for overall robbery in Cambridge for the seven months of the year is 72 incidents. Between January and July of 2014, 38 robberies were reported, which translates to a 47% decline below the projected total.
- There were six commercial robberies in the first five weeks of 2014. That spree stopped on February 8<sup>th</sup>, with only nine incidents recorded over the next six months. Arrests have been made in 8 of the 15 robberies. The only commercial robbery during July in Cambridge was at a Cambridge Street bar at closing time when an inebriated customer pulled a knife, grabbed a stack of lottery tickets, and fled. This case is still under investigation.
- Street robberies declined 21% in Cambridge in 2013 to the lowest total in 40 years and that consistent drop has continued over the first seven months of 2014 with an unfathomable decline of 55% registered when compared with last year's total for the same time period. The total of 23 street robberies for the first seven months of this year is a remarkably low number for Cambridge. Reference the chart on the left and compare this year with 2009 when there were 85 robberies in Cambridge between January and the end of July.

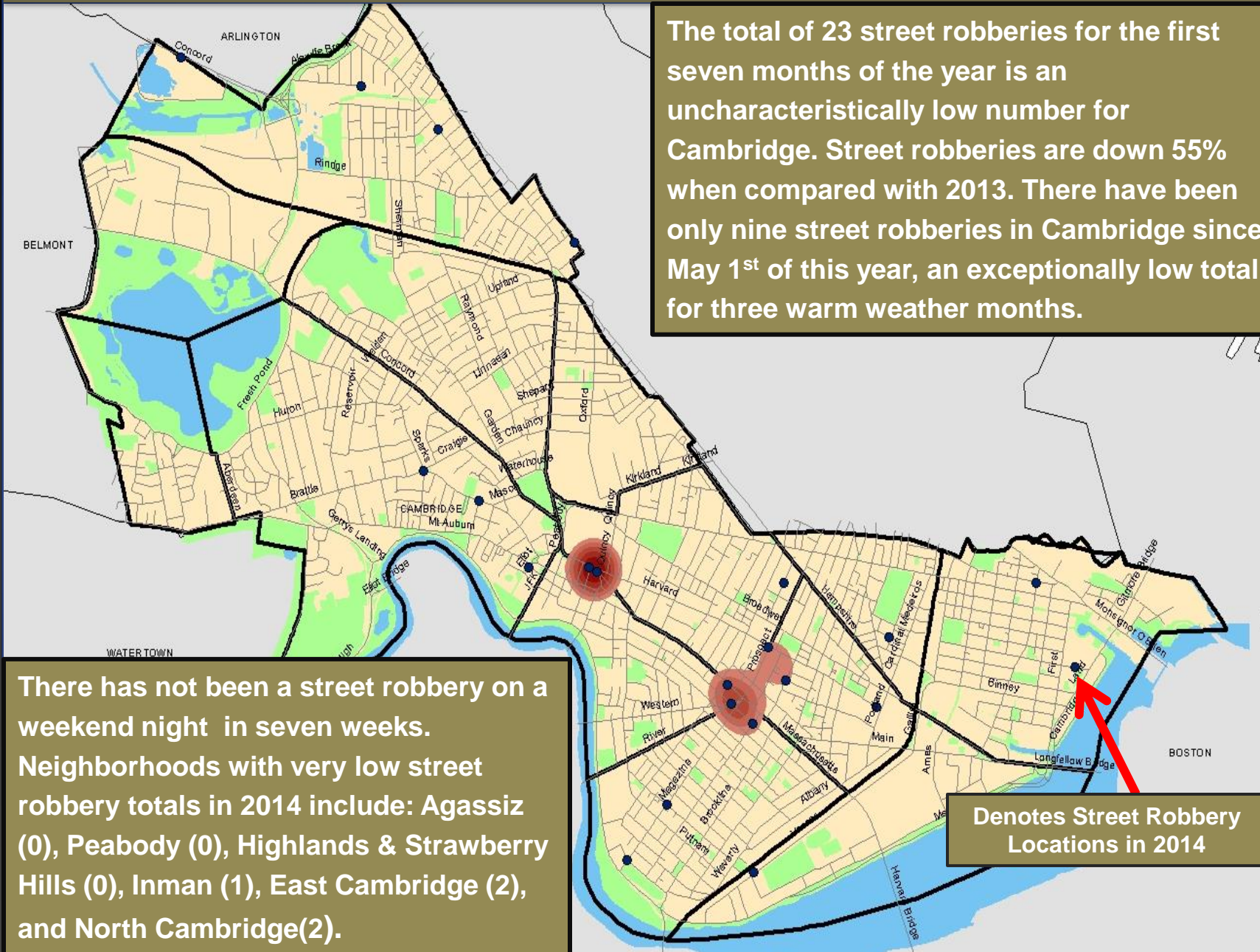




# Street Robberies: 1.1.14 to 7.28.14

Cambridge Police BridgeStat

July 2014



The total of 23 street robberies for the first seven months of the year is an uncharacteristically low number for Cambridge. Street robberies are down 55% when compared with 2013. There have been only nine street robberies in Cambridge since May 1<sup>st</sup> of this year, an exceptionally low total for three warm weather months.

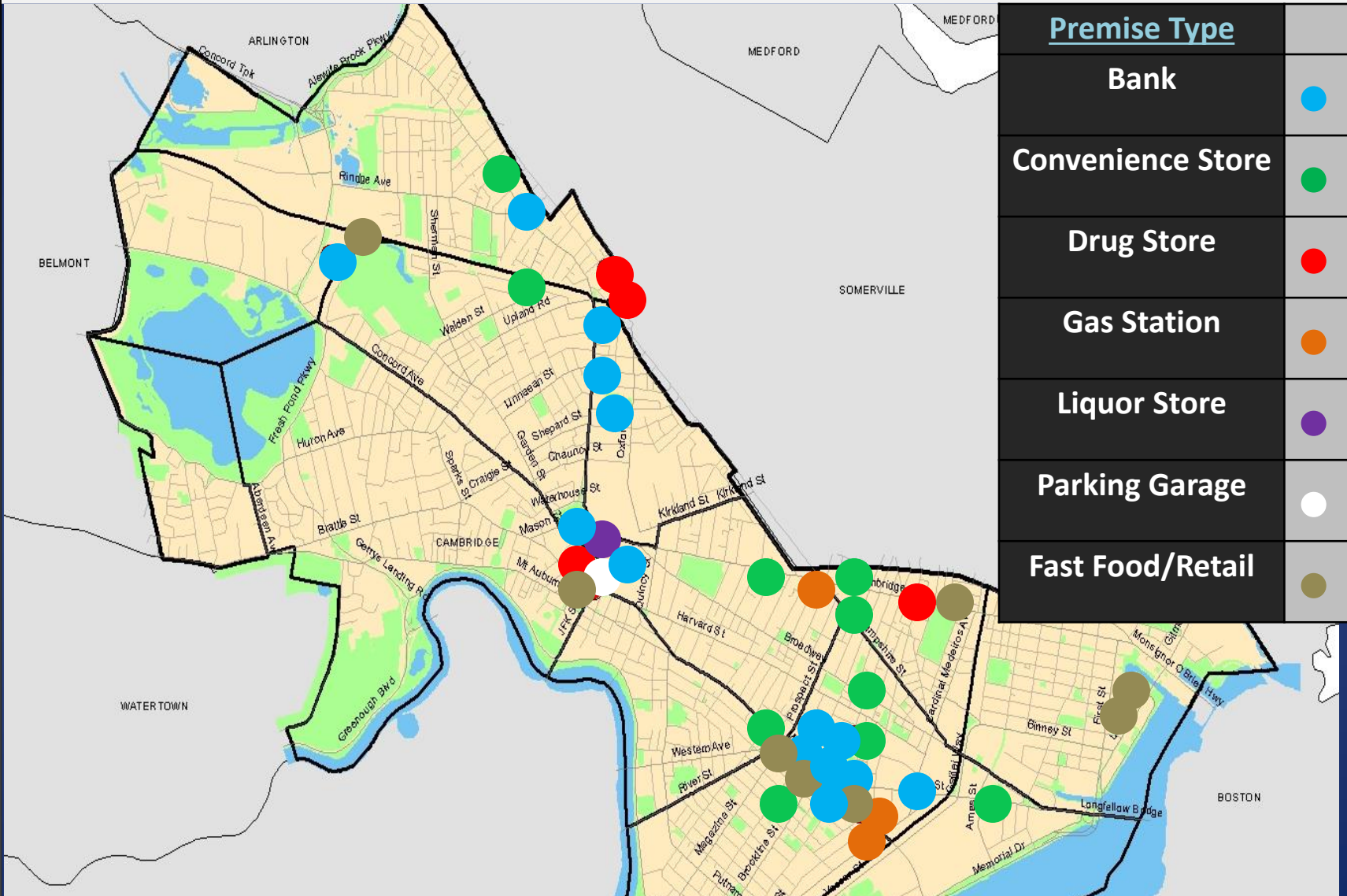
There has not been a street robbery on a weekend night in seven weeks. Neighborhoods with very low street robbery totals in 2014 include: Agassiz (0), Peabody (0), Highlands & Strawberry Hills (0), Inman (1), East Cambridge (2), and North Cambridge(2).

Denotes Street Robbery Locations in 2014





# Commercial Robberies by Premise Type: 1.1.13 to 7.28.14

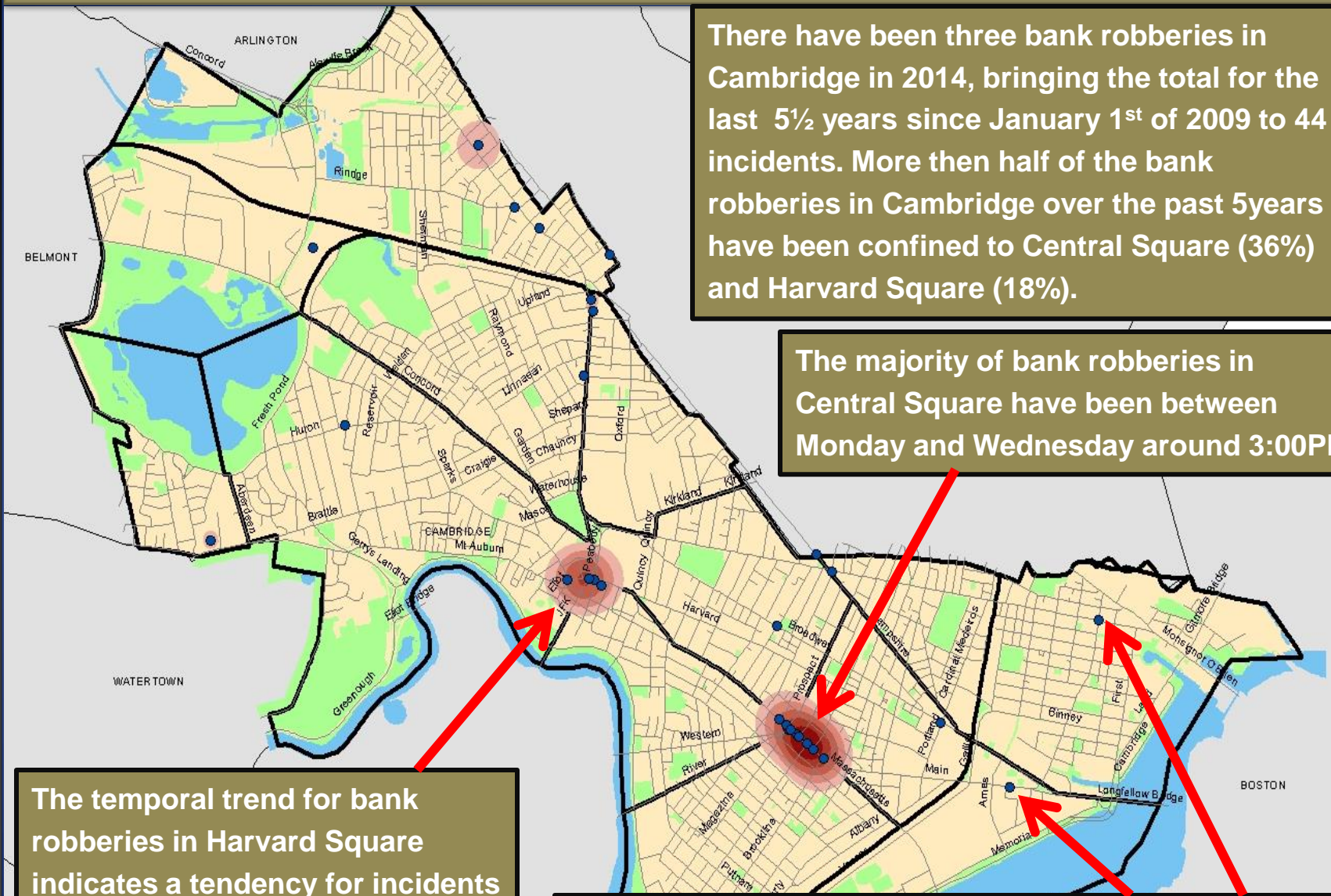


There have been 45 commercial robberies at: (14) banks, (11) convenience stores, (4) drug stores, (3) gas stations, (2) fast food chains, a liquor store, a parking garage, and (9) misc. retail locations.



# Bank Robberies in Cambridge: 1.1.09 to 7.28.14

Cambridge Police BridgeStat



There have been three bank robberies in Cambridge in 2014, bringing the total for the last 5½ years since January 1<sup>st</sup> of 2009 to 44 incidents. More than half of the bank robberies in Cambridge over the past 5 years have been confined to Central Square (36%) and Harvard Square (18%).

The majority of bank robberies in Central Square have been between Monday and Wednesday around 3:00PM

The temporal trend for bank robberies in Harvard Square indicates a tendency for incidents to occur around noon or 4:00PM on Wednesday or Thursday.

There has been only one bank robbery in Kendall Square and one in East Cambridge since 2009.





# AGGRAVATED ASSAULT

*No Patterns*

## Percent Change

Last 4 Weeks

**-48%**

Previous Year

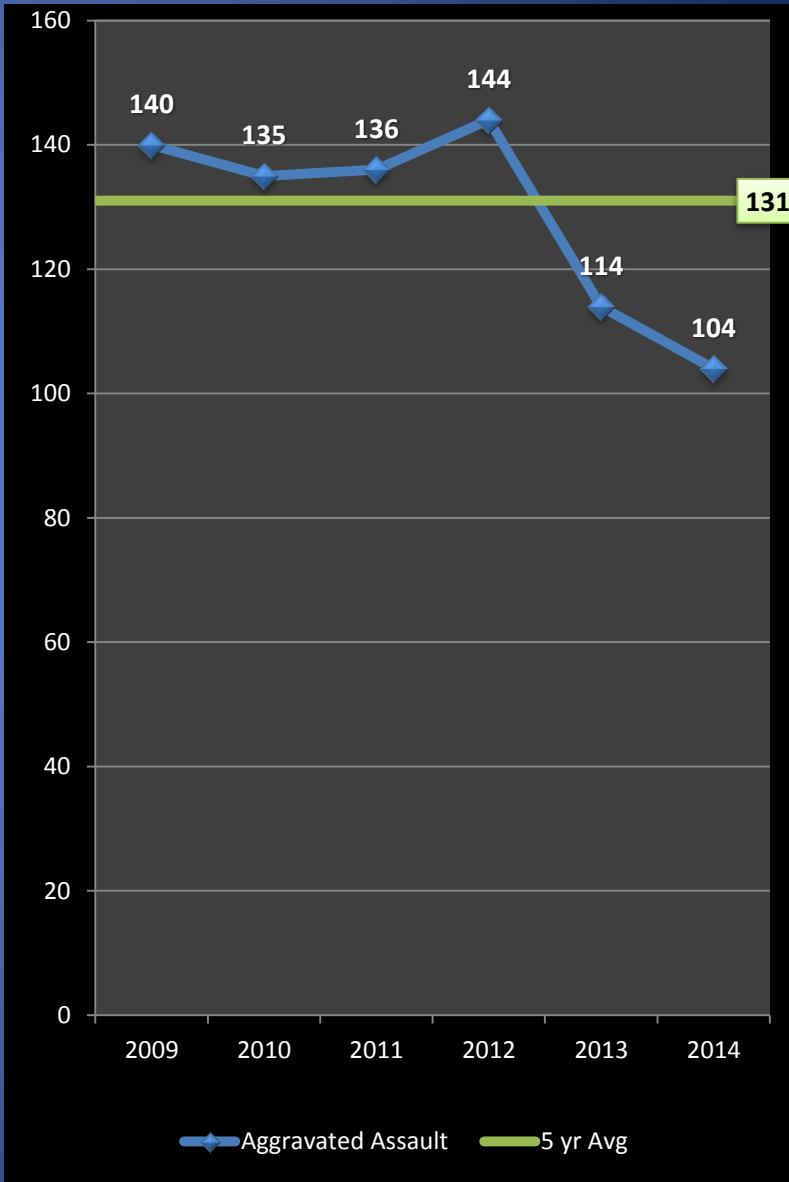
**-9%**

5 Year Average

**-21%**

- When compared to the first seven months of 2013, the total of aggravated assaults indicated a decline of 9% with 10 fewer incidents counted for the same time period in 2014. When measuring this violent index crime against the five-year average for the time period between January and the end of July, there has been a decrease of 21%, with 27 fewer crimes below the projected average of 131 aggravated assaults.
- Aggravated Assaults fell from 21 incidents in June down to 11 reported crimes (-48%) in the month of July. The majority of this decline can be attributed to a decrease in domestic assaults across the city.
- **Classification Breakdown for 2014**

Type	Number	% of Total
Domestic	46	44%
Unprovoked	15	14%
Road Rage	10	10%
Workplace	9	9%
Alcohol/Bar	9	9%
Shop Owner /Patron	8	8%

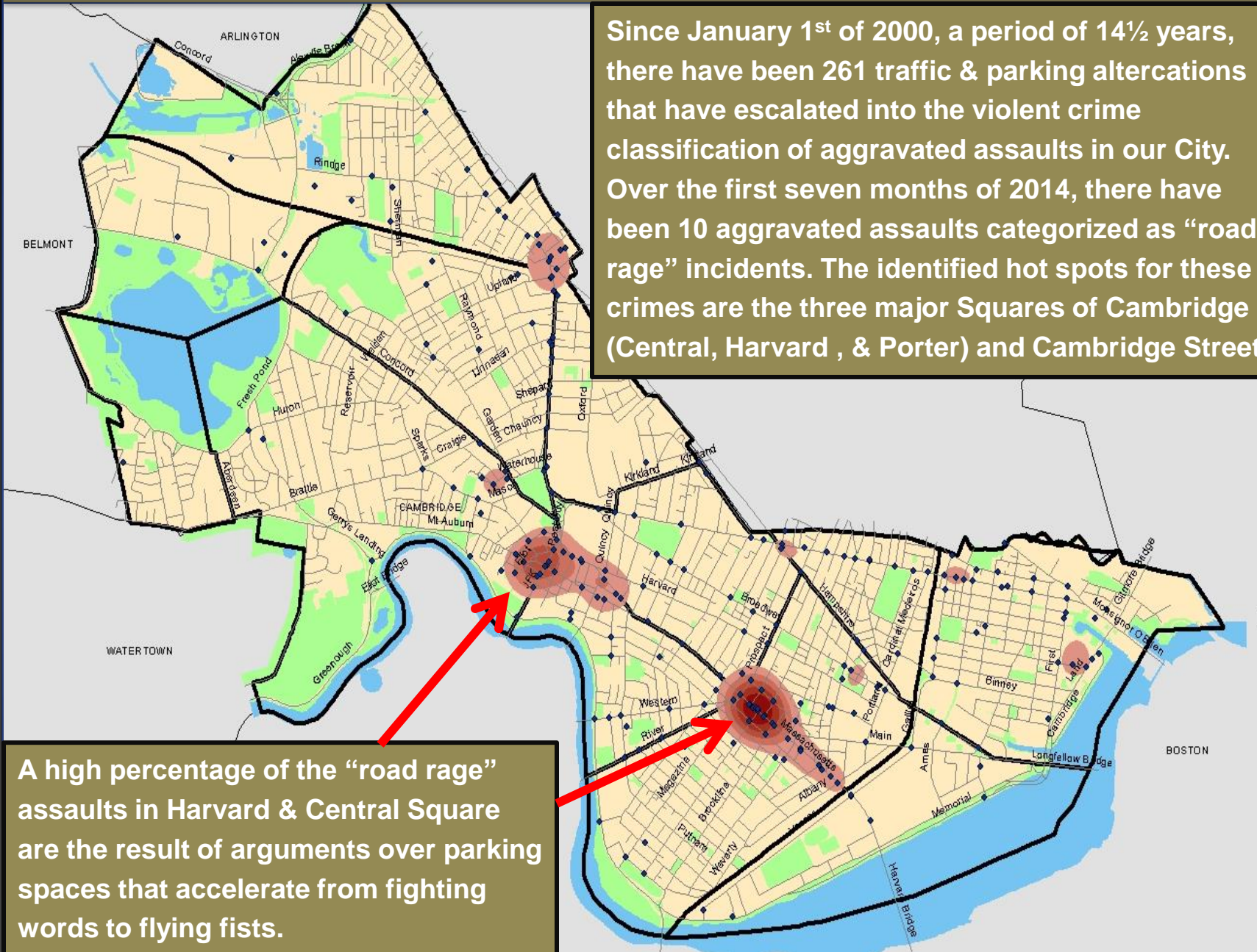




# Road Rage Aggravated Assaults: 1.1.00 to 7.28.14

Cambridge Police BridgeStat

July 2014



Since January 1<sup>st</sup> of 2000, a period of 14½ years, there have been 261 traffic & parking altercations that have escalated into the violent crime classification of aggravated assaults in our City. Over the first seven months of 2014, there have been 10 aggravated assaults categorized as “road rage” incidents. The identified hot spots for these crimes are the three major Squares of Cambridge (Central, Harvard , & Porter) and Cambridge Street.

A high percentage of the “road rage” assaults in Harvard & Central Square are the result of arguments over parking spaces that accelerate from fighting words to flying fists.



# Burglary

*No Patterns*

## Percent Change

Last 4 Weeks

Previous Year

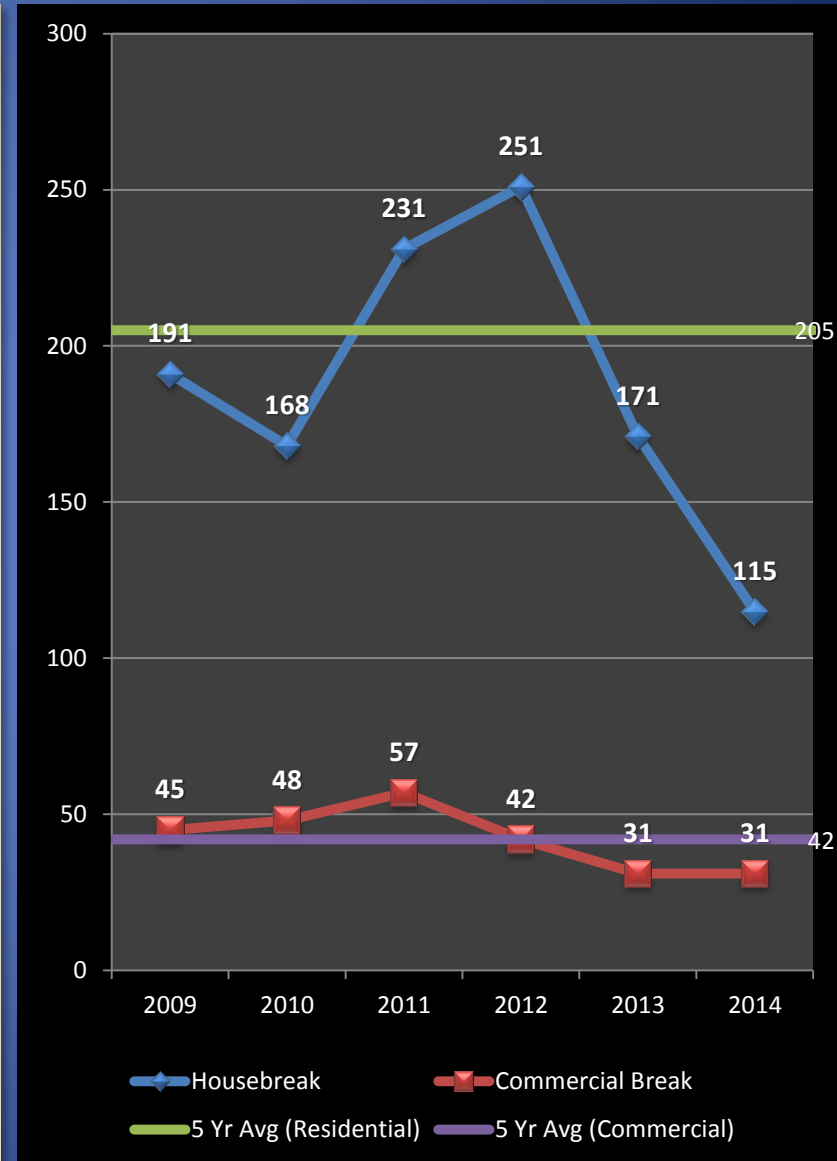
5 Year Average

**+5%**

**-28%**

**-41%**

- The property index crime of burglary, the combination of residential and commercial breaks, is down an extraordinary 41% when compared to the five-year average, with 102 fewer incidents than the projected total of 248 crimes, and down 28% when compared with last year's total for the first seven months of the year, with 56 fewer burglaries reported.
- The commercial burglary total so far in 2014, 31 incidents, is exactly the same as in the first seven months of 2013. When measured against the five-year average, a 26% reduction is revealed with 11 fewer crimes than the 42 projected for the first seven months of the year. There has not been a commercial burglary pattern identified yet in 2014.
- Analysis of housebreak activity in Cambridge for the first seven months of 2014 indicates a surprising 33% reduction (56 fewer breaks) than in 2013 and a 44% decline below the five-year projected average of 205 housebeaks.



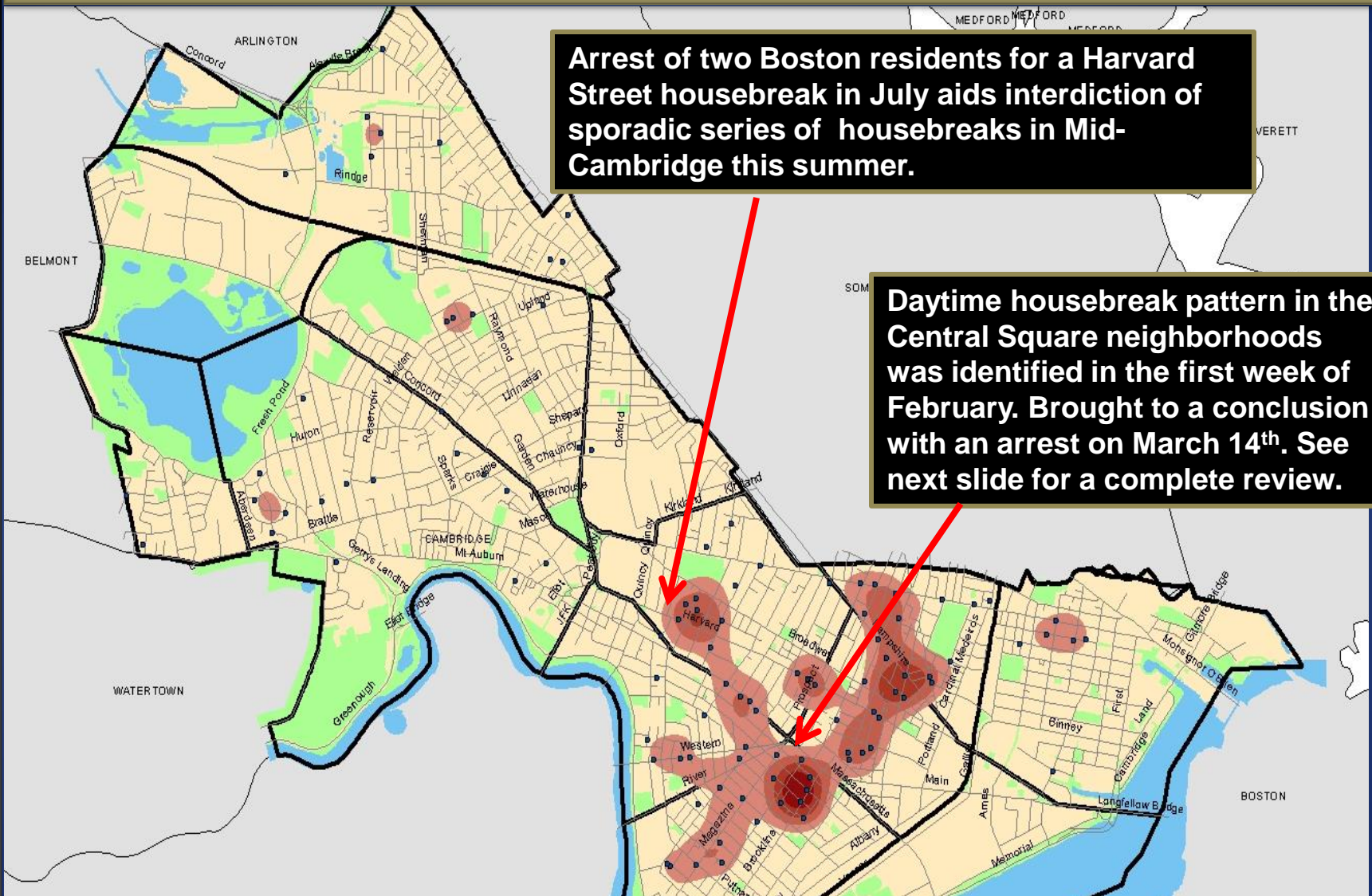




# Housebreaks: 1.1.14 to 7.28.14

Cambridge Police BridgeStat

July 2014



**Neighborhoods with uncharacteristically low housebreak activity over the first seven months of 2014 include: East Cambridge (6); Peabody (6); Agassiz (1); Strawberry Hills (2), and Highlands (0).**





# Major Housebreak Pattern of 2014: Central Square Neighborhoods

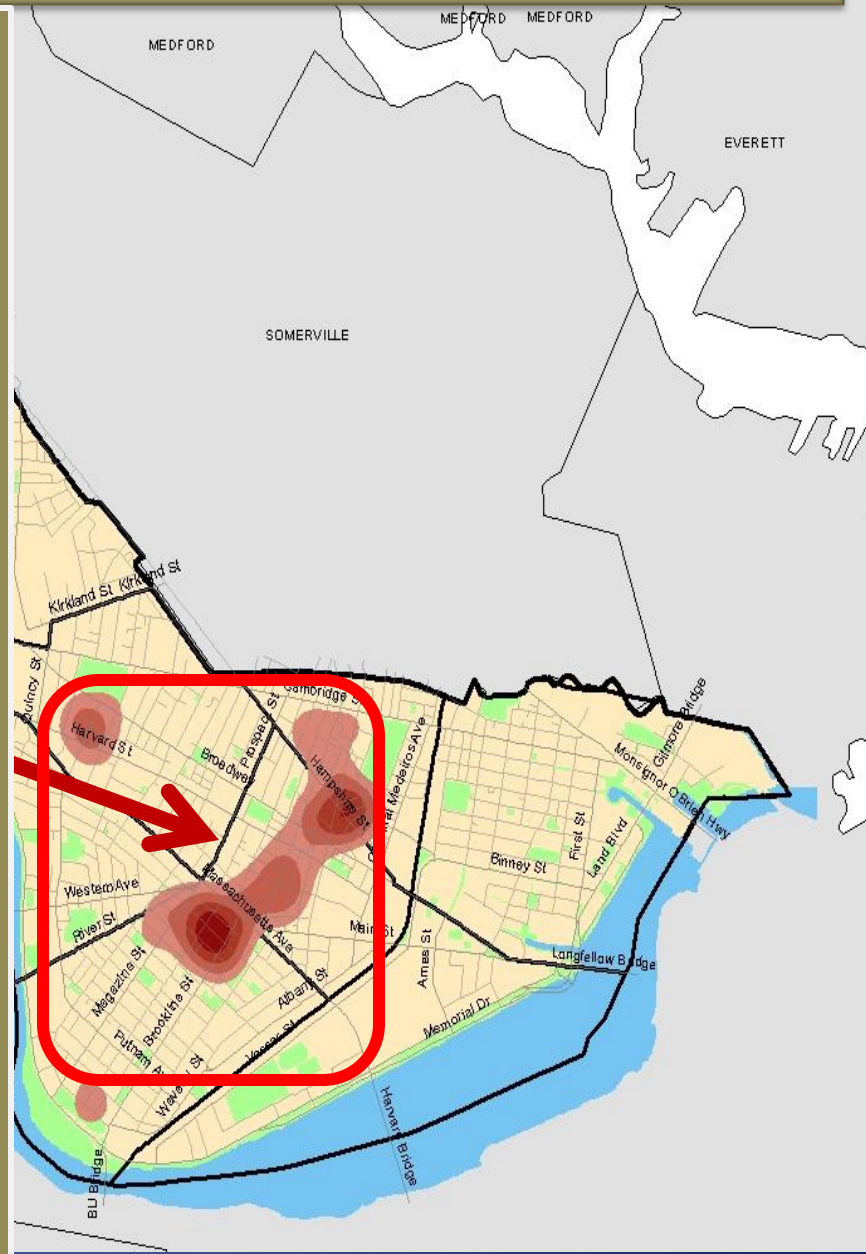
Cambridge Police BridgeStat

This daytime housebreak pattern in the Central Square neighborhoods was identified in the first week of February. Breaks were concentrated in the Windsor / Willow Street area and along upper Magazine and Brookline Streets in Cambridgeport.

Incidents were between the hours of noon and 6:00PM with front doors being forced and laptops and jewelry identified as the targets.

On 3.12.14, an alert for a pattern of housebreaks in this area was sent to the local media. That same day, it was ascertained that Jonathan Thomson of Cambridge, who had been recently arrested in Boston for housebreaks, was a suspect in this series.

On 3.13.14, Thomson was arrested on warrants at his residence. There have only been four housebreaks in Area 4 over the past four months.





# LARCENY

*No Patterns*

- Overall, **larceny through the first seven months of 2014 has decreased by 18%** when compared with the same time frame in 2013 and is also 21% below the five-year weighted average with 279 fewer crimes.
- **Larcenies from motor vehicles have dropped off again over the past month, now registering 27% below the first seven months of last year.** The large difference at the beginning of 2014 could be attributed to the rough winter weather this year, but there is little explanation for the continued reduction during the warm months.
- **Larcenies from persons continue to decrease, now registering 46% below the level reported during this time frame in 2013,** with 93 fewer incidents than last year and 85 below the five-year average. Both Harvard Sq and Central Sq remain quiet for this crime type, with only a few sporadic incidents reported over the past two months.
- **There have been 195 larcenies from buildings reported citywide through July of 2014.** This is 14% below the number reported in 2013 and 12% below the five-year average. There are currently no patterns of this activity.
- **Larcenies from residences are one of the few crimes to see an increase this year. This crime type has risen 17%** when compared to last year, due largely to an increase in package thefts from residences in Mid-Cambridge, Peabody, and North Cambridge in May. These incidents dropped nearly 50% in June and remained low in July with only four reported citywide this month.
- Thus far in 2014, there have been **173 bike thefts reported citywide,** which is 6% below the total reported during this time frame in 2013 and 5% below the five-year average. Bike thefts dropped 18% from 61 in June to 50 in July. Recent hotspots include Harvard & Central Squares and residential areas in Mid-Cambridge.

## Percent Change

Last 4 Weeks

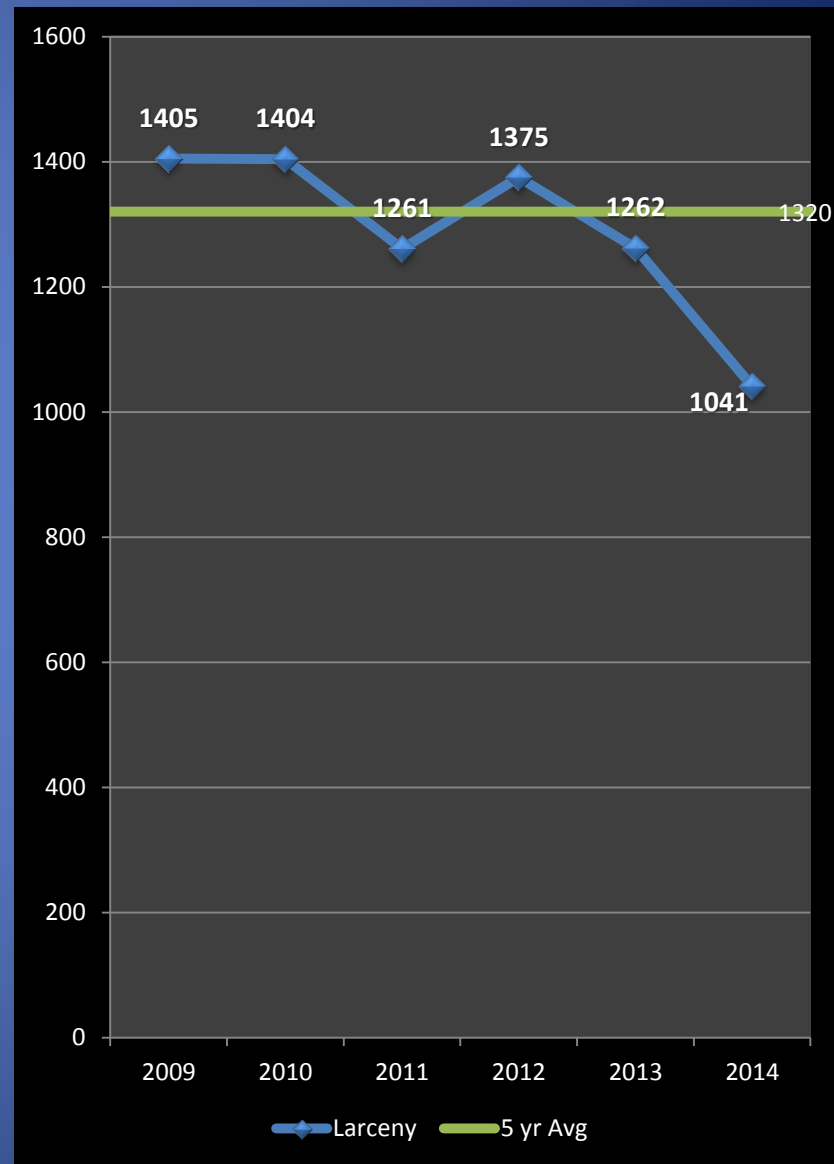
**-10%**

Previous Year

**-18%**

5 Year Average

**-21%**





# LARCENY: *From MVs*

*No Patterns*

- Larcenies from MVs are **down 27% year-to-date through the first seven months of 2014** when compared with the same time frame in 2013. There have been 83 fewer thefts reported so far this year. This crime has also **slipped 37%** when measured against the five-year average, with **132 fewer incidents** than the projected total of 358 thefts.
- When comparing the last four weeks to the previous four weeks, this property index crime plunged downward by 12 incidents (-33%).
- The border between Area 4 and Inman / Harrington had been the major hot spot for larceny from motor vehicles during February & March. The majority of these incidents were on weekend nights with unlocked vehicles as the target. Over the past two months, this area has been quiet.
- Over the weekend of May 20<sup>th</sup>, there were nine LMVs in West Cambridge and over the border into Peabody. The most likely time frame was from 1am - 3 am. Unknown suspects were targeting unlocked doors and taking change or backpacks. Extra patrols appear to have eradicated this series with few incidents reported over the past two months.

## Percent Change

Last 4 Weeks

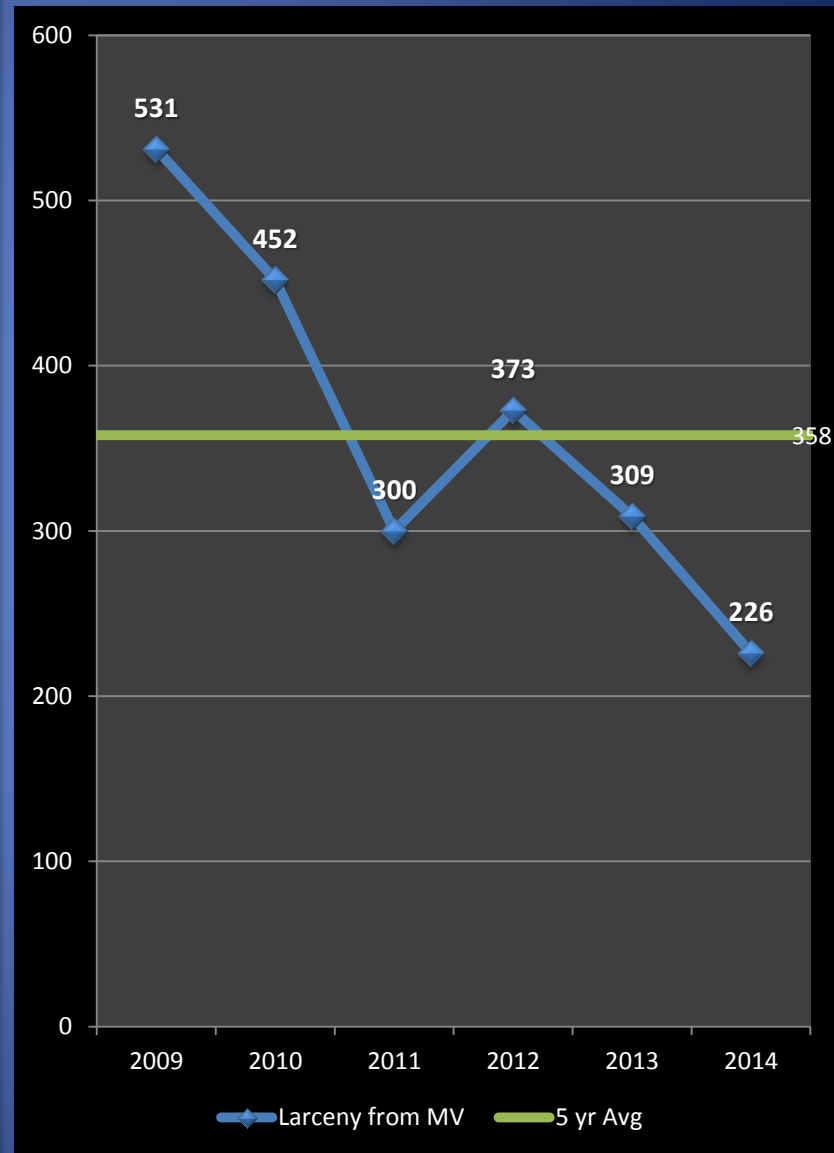
**-33%**

Previous Year

**-27%**

5 Year Average

**-37%**



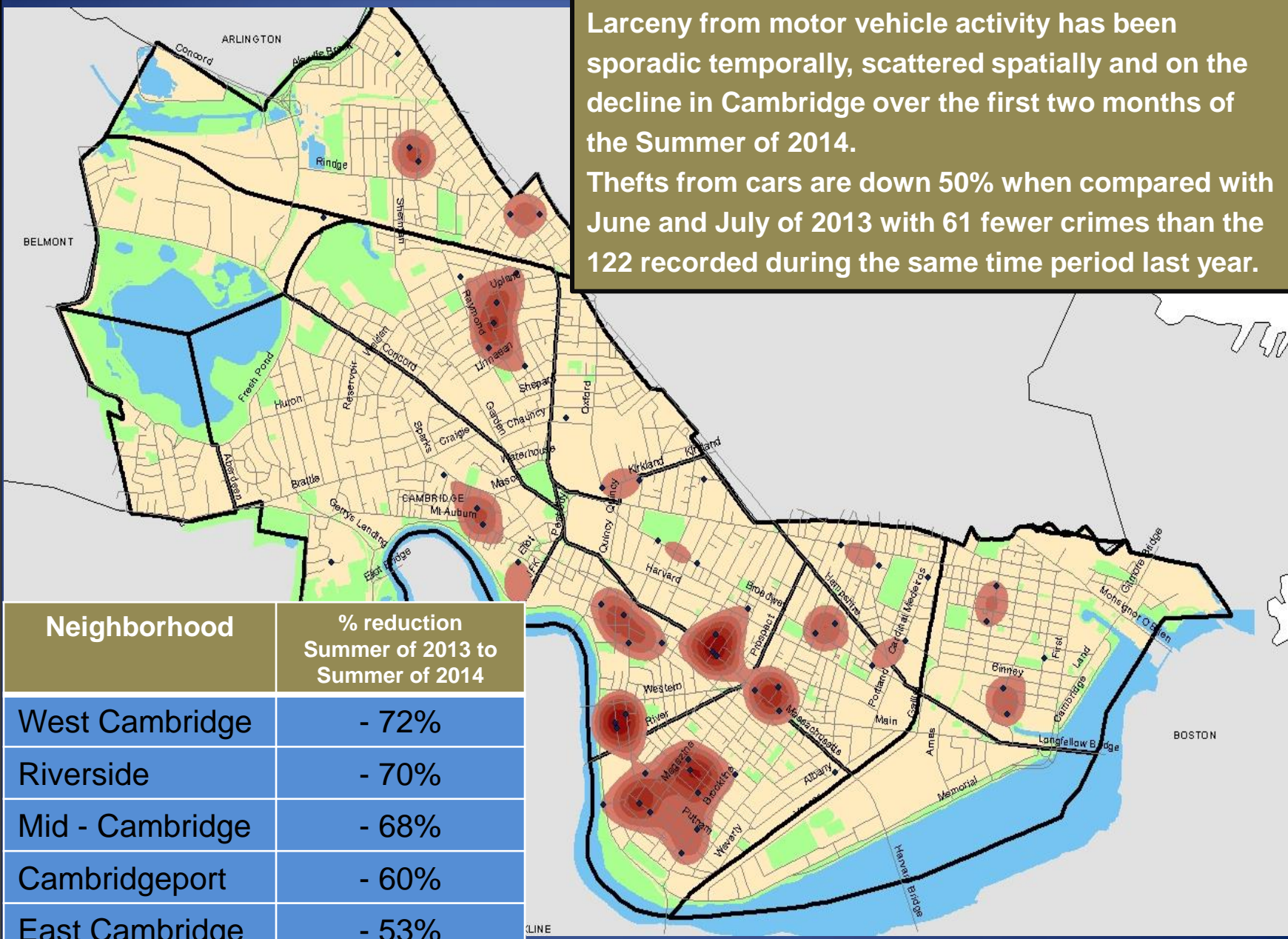




# Larceny from MVs: 6.1.14 to 7.28.14

Cambridge Police BridgeStat

Larceny from motor vehicle activity has been sporadic temporally, scattered spatially and on the decline in Cambridge over the first two months of the Summer of 2014. Thefts from cars are down 50% when compared with June and July of 2013 with 61 fewer crimes than the 122 recorded during the same time period last year.



Neighborhood	% reduction Summer of 2013 to Summer of 2014
West Cambridge	- 72%
Riverside	- 70%
Mid - Cambridge	- 68%
Cambridgeport	- 60%
East Cambridge	- 53%

July 2014





# Larceny from Motor Vehicles

## What can we do?

### Police Response Strategy:

- Cambridge Police are focused on prevention of these crimes by increasing officer visibility in targeted areas.
- Citizens are encouraged to take the proper precautions to protect their vehicles and their belongings by doing everything possible to not make their vehicles easy targets.

### Citizen Response Strategy:

- Citizens are asked to take the following precautions to protect themselves, their vehicles, and their belongings from theft:
  - **Make sure all of your car doors are locked when you leave your vehicle.**
  - **Take extra care when out doing your shopping.**
  - **If you are approached by a suspicious person while you are in your vehicle, sound your horn to attract attention.**
  - **NEVER LEAVE VALUABLES EXPOSED IN YOUR CAR.**
    - If you must leave packages or valuables in your car, **place them in the trunk or under a blanket to conceal them**
- Visit our website for more tips to keep your vehicles and belongings at [www.CambridgePolice.org/SafetyTips](http://www.CambridgePolice.org/SafetyTips)





# LARCENY: *from Person* *No Patterns*

- **Larcenies from the person have fallen an amazing 93 incidents (46%) through July** when compared with the same timeframe in 2013. The total of 111 incidents reported thus far in 2014 is also 85 incidents below the five-year average of 196. There are no patterns of this crime type anywhere in the city at the present time.
- Often, much of the larceny from person activity is reported at the many bars and restaurants in Harvard Square (known as "dipper" activity). In July, there was only one incident of this nature reported in Harvard Sq, which is exceptionally low. In fact, one café in the Square that tends to be a hotspot for this activity has not seen a single dipper incident in 2014. In previous years, this same coffee shop would typically average eight larcenies from persons through the end of July.
- Part of the explanation for the large reduction may be that a number of the more prolific thieves, particularly ones that that tend to target the Harvard Square area, are currently incarcerated.
- Harvard Square, Central Square, and the Galleria Mall have seen the largest reductions in overall larcenies from persons this year, reporting anywhere from 35%-51% fewer incidents than last year.

## Percent Change

Last 4 Weeks

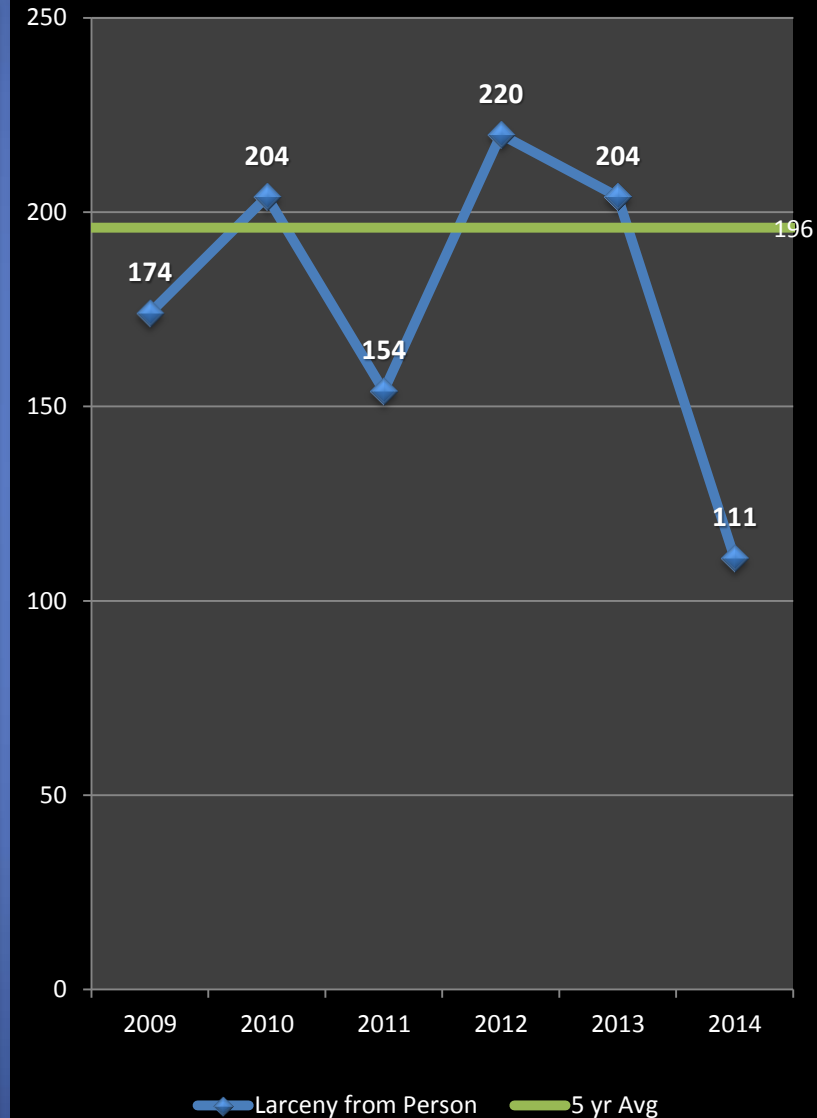
**-25%**

Previous Year

**-46%**

5 Year Average

**-43%**





# LARCENY: of Bicycle

No Patterns

- There have been 173 bikes reported stolen through the first seven months of 2014. This total is 6% (11 incidents) below the number reported during this time frame in 2013 and 5% (9 incidents) below the five-year average.
- With the warmer weather over the past two months, bike thefts have remained at a relatively higher level that is typical for this time of year. Incidents dropped from 61 in June to 50 in July but remain well above the 26 reported in May.
- Mid-Cambridge had the most bike thefts in June with nine, followed by Peabody and West Cambridge with seven each.
- 64% of the thefts reported this year have involved bikes that were locked but left out in the open (locked to public bike racks, for example). Recent hotspots include bike racks in Harvard & Central Squares and porches/yards/sidewalks in Mid-Cambridge and Peabody.
- **Breakdown by Neighborhood, year-to-date:**

Neighborhood	Total	% Citywide
Mid-Cambridge	34	20%
Riverside	18	10%
Peabody	18	10%
Inman/Harrington	18	10%

## Percent Change

Last 4 Weeks

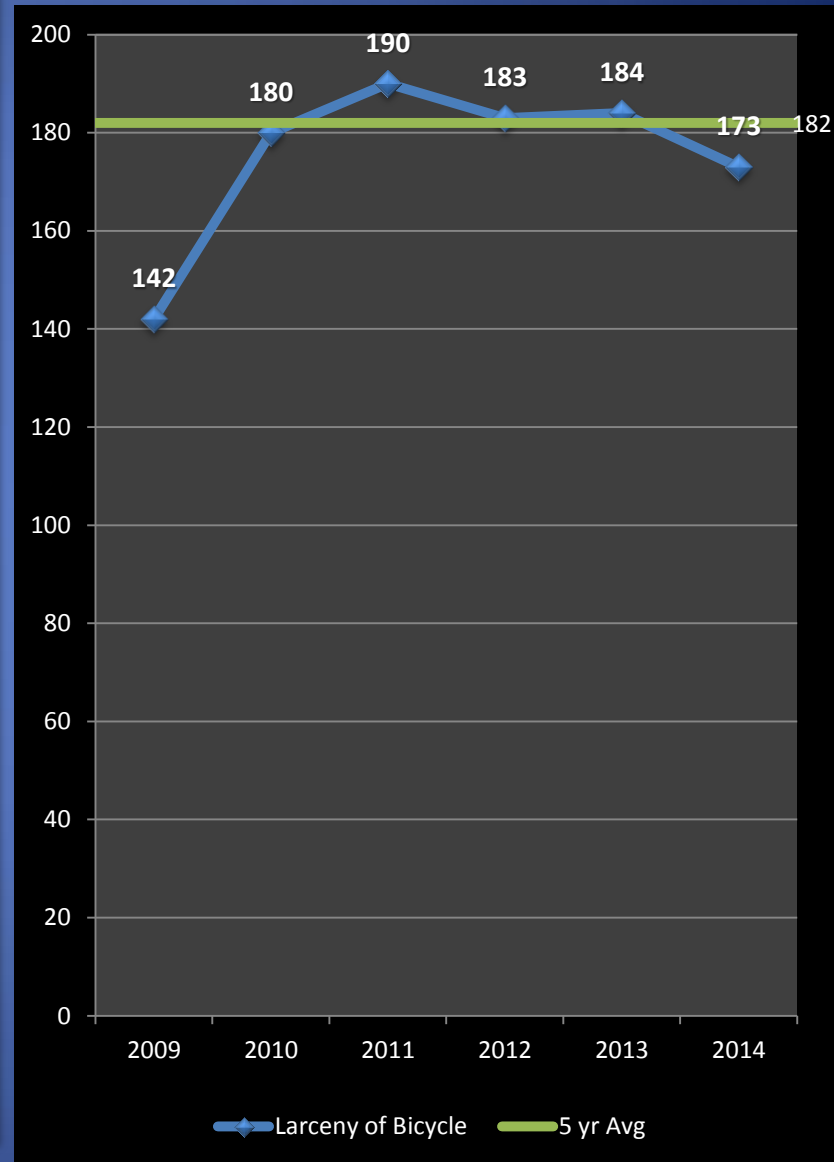
**-18%**

Previous Year

**-6%**

5 Year Average

**-5%**







# Larceny of Bicycles: 4.1.14 to 7.28.14

Cambridge Police BridgeStat



North Cambridge has been relatively quiet this year, aside from a grouping of bike thefts in mid-June on Rindge Ave, possibly involving a group of juveniles.

Harvard Sq was a hotspot for bike theft activity during the second half of July, with six thefts reported along Brattle St, Dunster St, Bennett St, and Mass Ave. All were locked to bike racks or poles at the time, and all but one occurred on a weekday. Time frames varied.

Much of the recent bike theft activity reported in the residential areas of Inman, Mid-Cambridge, and Peabody has involved bikes stolen from yards, porches, driveways, and sidewalks.

Mid-Cambridge, along with neighboring Riverside, have seen the most reported bike thefts thus far in 2014 with a combined 30% of the activity citywide year-to-date. These two neighborhoods also make up a large portion of the hotspot in Central Sq. A number of arrests related to bike thefts have been made in the Central Sq area; many of these involved homeless individuals.





# Larceny of Bicycles:

## *What Can We Do?*

### Police Response Strategy:

- Bicyclists stopped for infractions will be reminded to use lights when biking at night, wear helmets under the age of 16, and other safety tips to promote safer biking in the city.



### Citizen Response Strategy:

- Bicyclist are encouraged to record their bike's serial number as well as take a picture of their bike to provide to police in the event that it is lost or stolen.
- For information on bicycle safety, visit: [www.CambridgePolice.org/CommunityRecources](http://www.CambridgePolice.org/CommunityRecources).
  - Click on the "Bicycle Safety and Registration" link.
- Stores should be vigilant in recording serial numbers and customer information on sales.
- Universities should encourage students to register their bikes and distribute information on the correct locking procedures.



# AUTO THEFT

*No Patterns*

## Percent Change

Last 4 Weeks

**-25%**

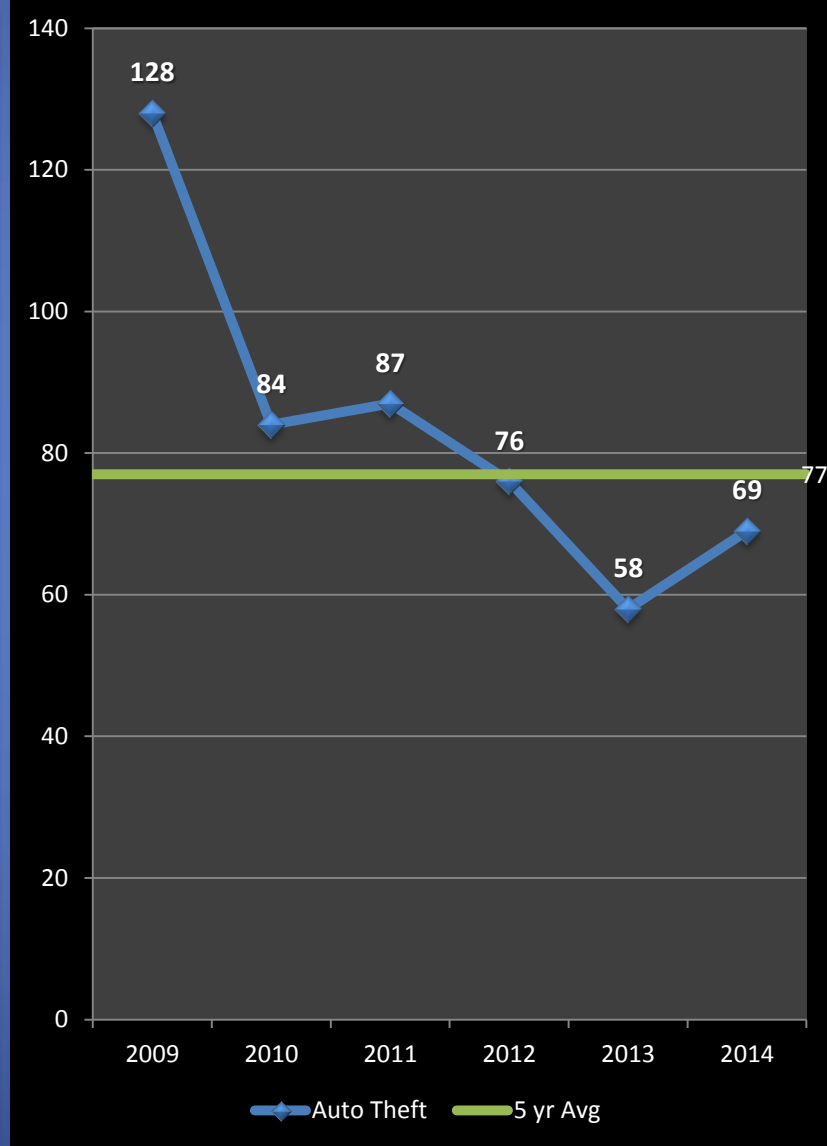
Previous Year

**19%**

5 Year Average

**-10%**

- The projected five-year weighted average for auto thefts after the first seven months of 2014 is 77; thus far, we are 8 incidents below the average. However, with 69 thefts year-to-date, we are seeing an increase over 2013 of 19% or 11 incidents.
- There were 12 auto thefts reported in the past four weeks, which resulted in a 25% decrease from June. Only 5 of the 12 were of moped or motorcycles. We are not seeing a large increase of thefts involving these types of vehicles like we have in past summer months.
- In the past 4 weeks, three autos thefts have taken place in each of the following neighborhoods: Area 4, Cambridgeport, and Inman/Harrington. However, there are no patterns anywhere in the City at the present time.
- Year-to-date, 33 (or 48%) of the stolen motor vehicles have been recovered.





# Help Prevent Crime

*And keep yourself informed!*

## To receive information from the CPD:

- Sign up with for the **Cambridge Alert Network**, to receive alerts about emerging crime patterns, neighborhood meetings, and crime prevention tips, by visiting [www.CambridgeMa.gov/AlertNetwork](http://www.CambridgeMa.gov/AlertNetwork).
- “Like” the Cambridge Police Department on Facebook at [www.facebook.com/CambridgePolice](http://www.facebook.com/CambridgePolice)
- Follow [@CambridgePolice](https://twitter.com/CambridgePolice) on Twitter.
- Visit our website at [www.CambridgePolice.org](http://www.CambridgePolice.org) for valuable information and reports including the Daily Log and BridgeStat, which is published on the first Friday of every month.
- Download our new “MyPD” smartphone app at [www.CambridgePolice.org/MyPD](http://www.CambridgePolice.org/MyPD).

## To Share Information with the CPD:

- Call our Non-Emergency Telephone Number at **617-349-3300**.
  - Every call for service generates a police response, so help drive our resources by reporting things that seem suspicious or out of the ordinary.
- Send an Anonymous TEXT-A-TIP:
  - Send an ANONYMOUS text message to **Tip411 (847411)**. Begin your message with Tip650 and then type your message. You will receive a response from the Cambridge Police with the option to continue communicating. Please remember that this is not a replacement for 9-1-1. **If you witness an emergency situation, please call 9-1-1 immediately.**
- Send an Anonymous Crime Tip E-Mail at [www.CambridgePolice.org/Tips](http://www.CambridgePolice.org/Tips)





# Questions?

- The complete 2013 Cambridge Police Annual Crime Report is available on our website at [www.CambridgePolice.org](http://www.CambridgePolice.org).
- We welcome all questions, comments, and suggestions.
- Please direct your feedback to: [BridgeStat@CambridgePolice.org](mailto:BridgeStat@CambridgePolice.org).
- To review previous editions of BridgeStat, visit our website at [www.CambridgePolice.org/BridgeStat](http://www.CambridgePolice.org/BridgeStat).