

# DANEHY PARK IMPROVEMENT PLAN

Community Meeting #1

June 27, 2024



**CITY OF  
CAMBRIDGE**

Weston & Sampson<sup>SM</sup>  
design studio



# AGENDA

01

**Project Team**

02

**Project Introduction**

03

**Project Schedule**

04

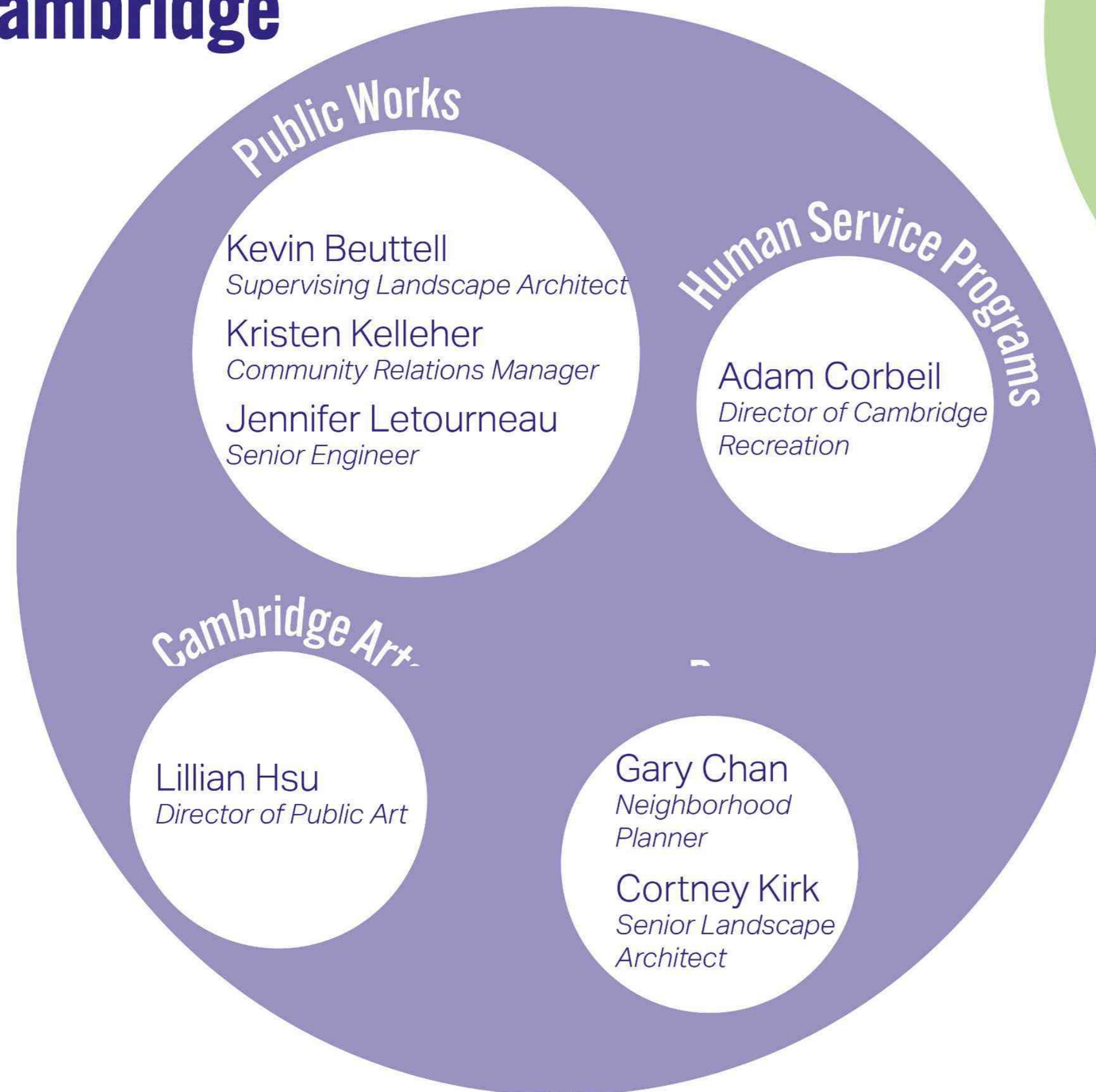
**Community Involvement**

05

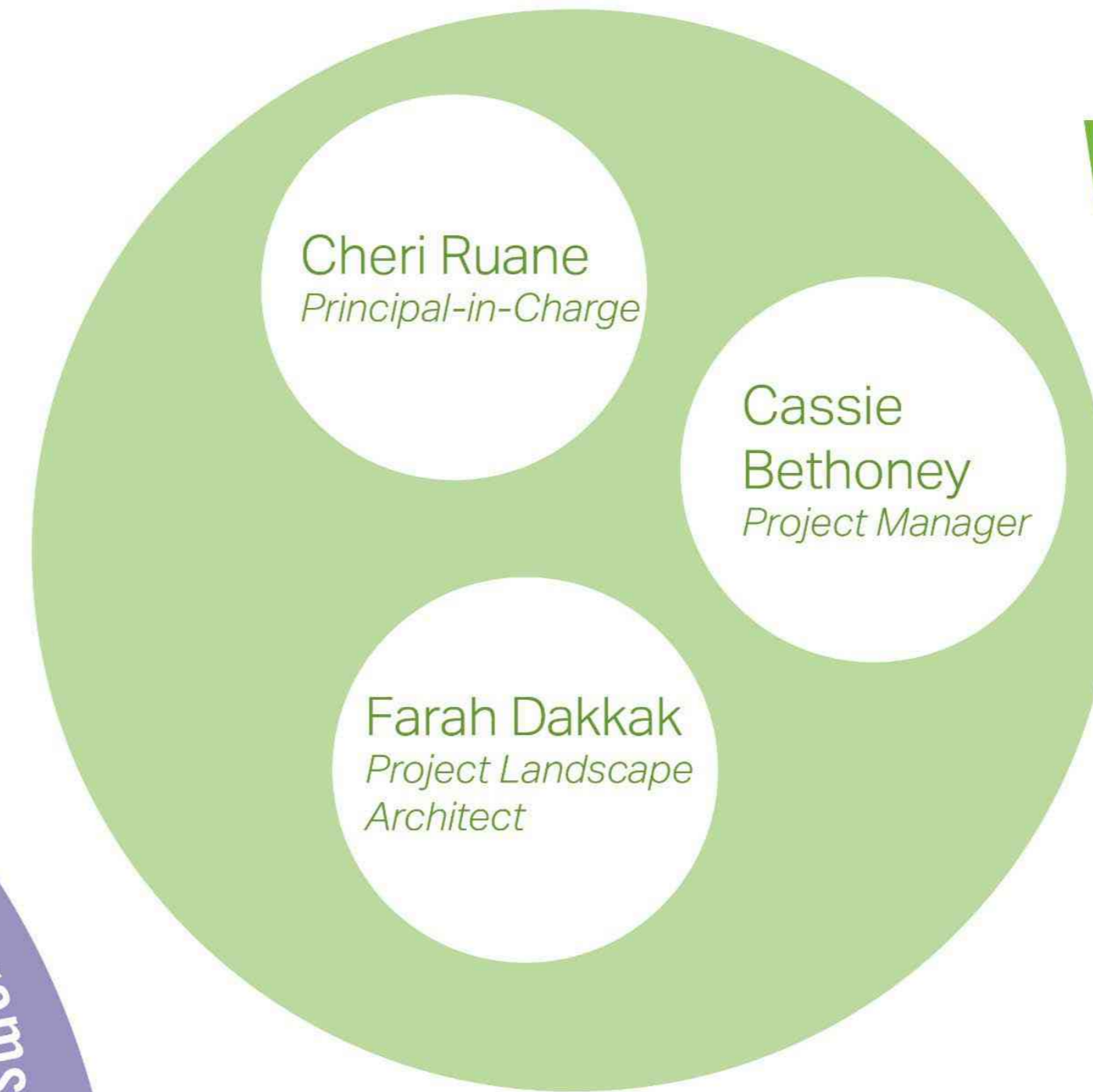
**Project Themes and How You Can Help!**

# PROJECT TEAM

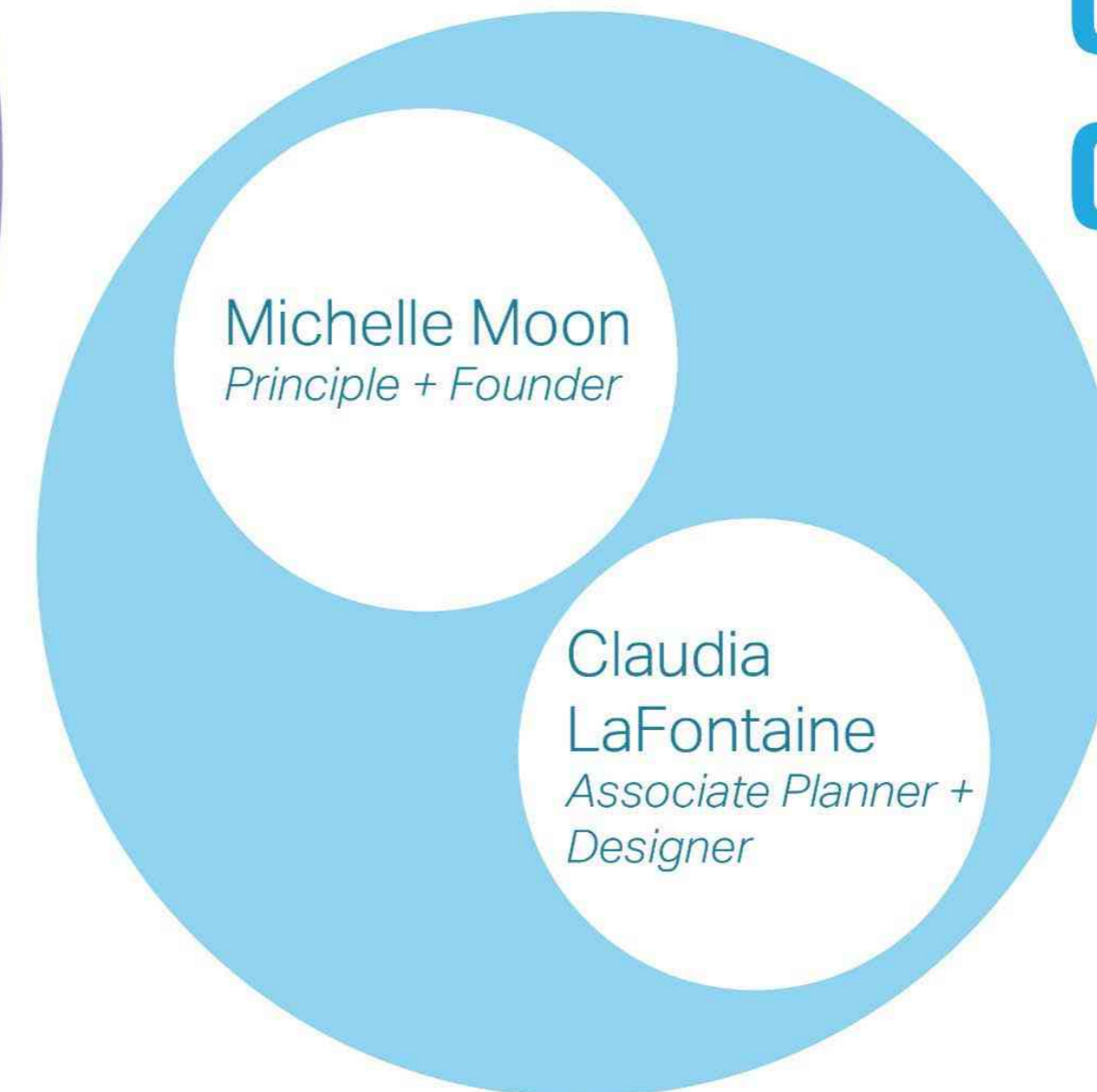
## City of Cambridge



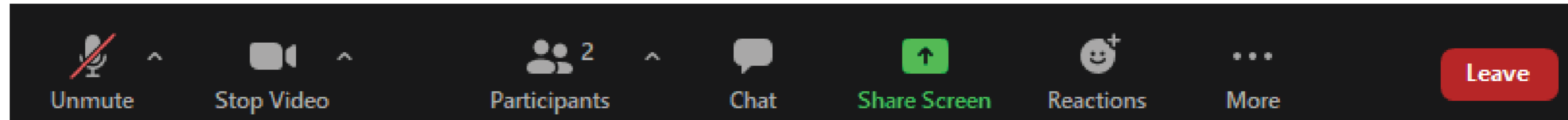
## Weston & Sampson



## Civic Space Collaborative

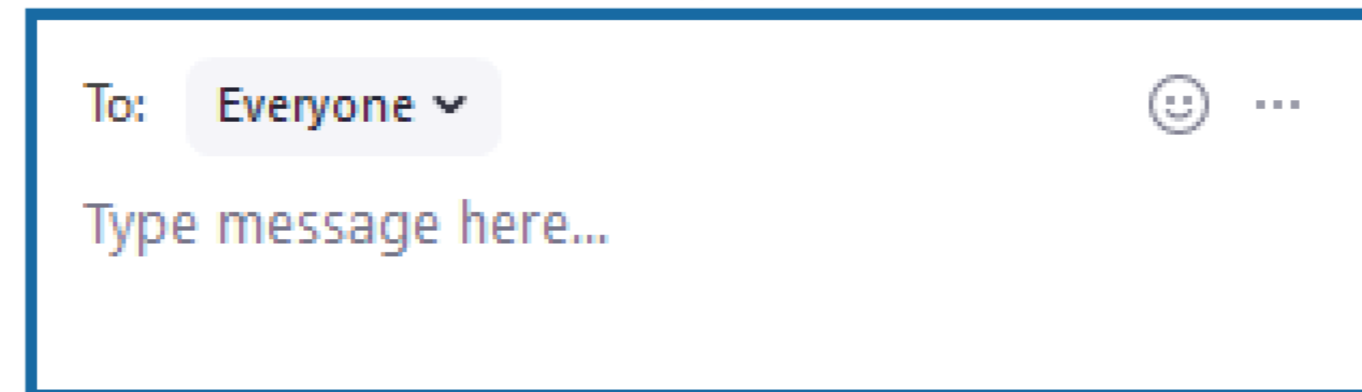


# USING ZOOM

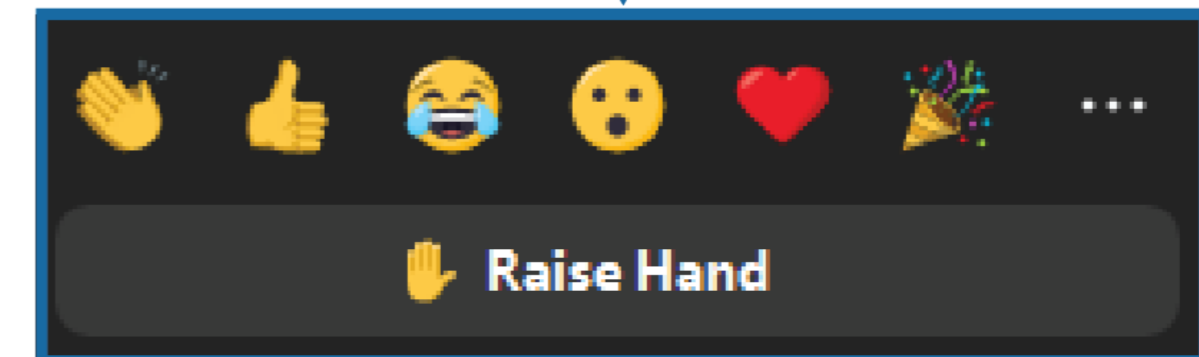


↑ ↑  
Please leave your **audio muted** and video on (if comfortable)

↑  
Click to open the **Chat** box. This will allow you to chat with the Hosts and Participants.



↑  
Click to open the **Reactions** box. This will allow you to give nonverbal feedback.



For Zoom-related questions reach out to Kevin Beuttell via chat or email [kbeuttell@cambridgema.gov](mailto:kbeuttell@cambridgema.gov)



If you're having connectivity issues, call in at  
Phone Number: (929) 436-2866  
Meeting ID: 863 8419 0141



We're recording!

# PROJECT INTRODUCTION

## DANEHY PARK IS A...

Neighborhood park for “everyday” needs, as well as a venue for “big day” annual events.











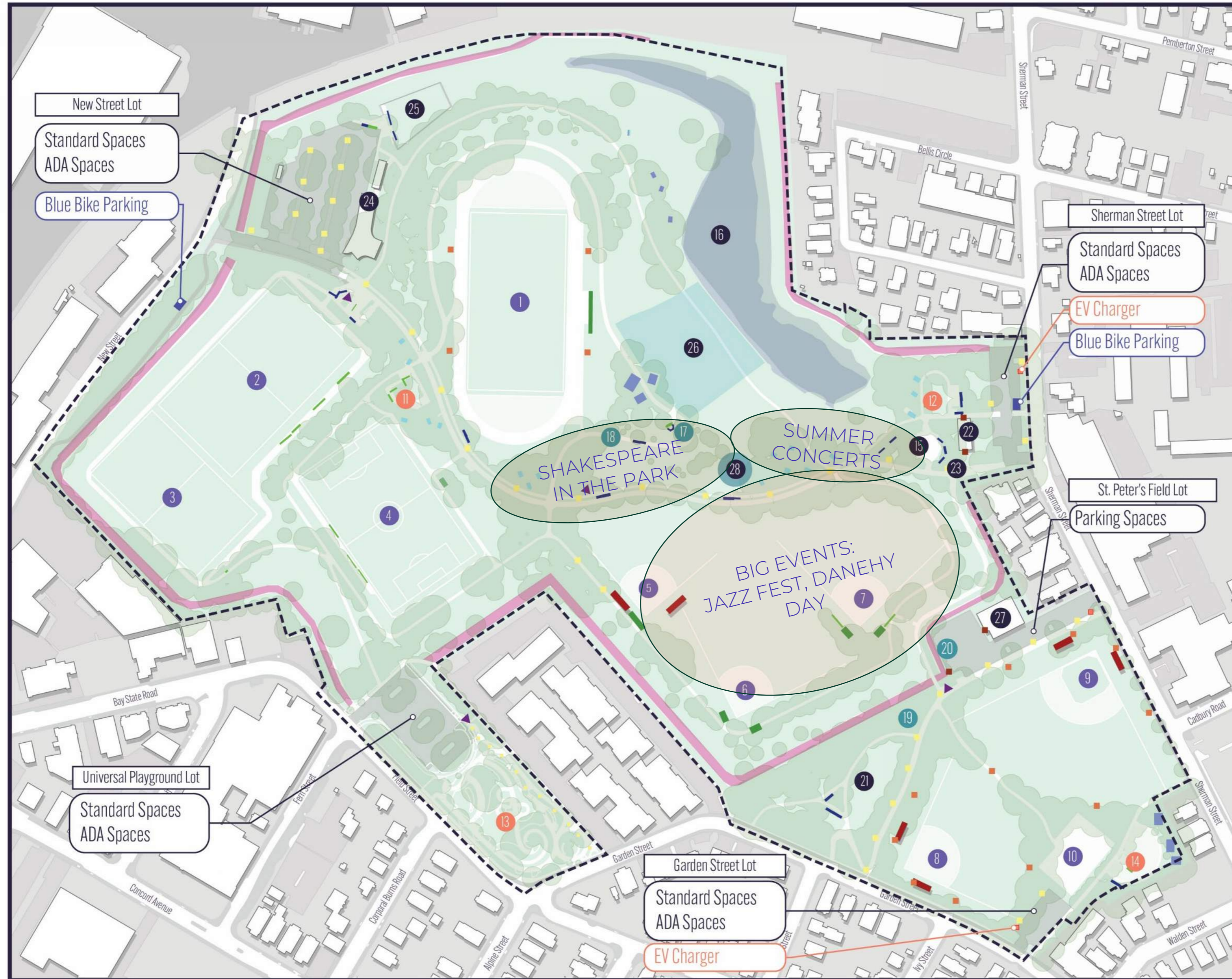






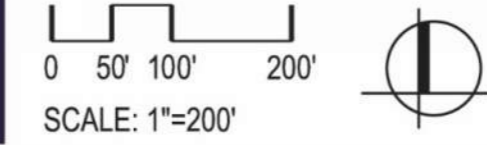


# DANEHY PARK AMENITIES AND EVENT AREAS

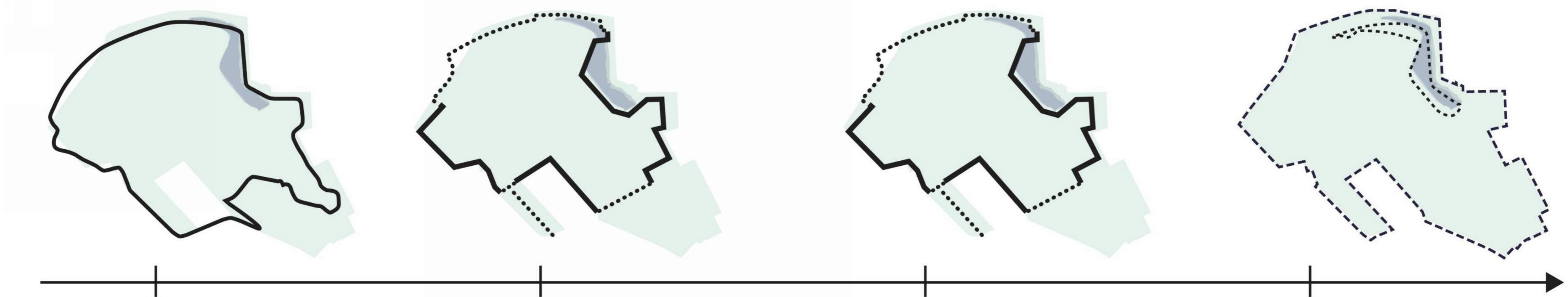


## LEGEND

- |  |  |  |                    |
|--|--|--|--------------------|
|  | Sports Lighting                                    |  | Park Benches       |
|  | Pedestrian Lighting                                |  | Seating areas      |
|  | Building Lights                                    |  | Picnic Tables      |
|  | Sports Benches                                     |  | Port-O-Johns       |
|  | Bleachers  |  | Vent Trench        |
|  | Duggouts   |  | EV Charging        |
|  | 1 Turf Field 4                                     |  | Blue Bikes         |
|  | 2 Field 1  |  |                    |
|  | 3 Field 2  |  |                    |
|  | 4 Field 3  |  |                    |
|  | 5 Softball Field #3                                |  |                    |
|  | 6 Softball Field #2                                |  |                    |
|  | 7 Softball Field #1                                |  |                    |
|  | 8 St. Peter's Softball                             |  |                    |
|  | 9 St Peter's Hardball                              |  |                    |
|  | 10 Danehy Basket Ball Courts                       |  |                    |
|  | 11 Danehy 3-6 Playground                           |  |                    |
|  | 12 Regina Antoine Tot Lot                          |  |                    |
|  | 13 Cambridge Universal Playground                  |  |                    |
|  | 14 Dinosaur Playground                             |  |                    |
|  | 15 Wheeler Water Garden w/ Mural by John Devaney   |  |                    |
|  | 16 Jurisdictional Wetland                          |  |                    |
|  | 17 Galaxy Exploration by Mierle Ladreman Ukeles    |  |                    |
|  | 18 Glassphalt Path by Mierle Ladreman Ukeles       |  |                    |
|  | 19 Floating Stones by Edward Levine                |  |                    |
|  | 20 Brine Tanks Mural by Monique Aimee              |  |                    |
|  | 21 Roethlisberger Memorial Park                    |  |                    |
|  | 22 Sherman St. Restroom w/ Murla by Holly Alderman |  |                    |
|  | 23 Shawn Megan Memorial Garden                     |  |                    |
|  | 24 Future Gateway Pavillion                        |  |                    |
|  | 25 Dog Park  |  | 28 Miyawaki Forest |
|  | 26 Sledding Hill Extents                           |  |                    |
|  | 27 Salt Shed                                       |  |                    |



# SITE HISTORY

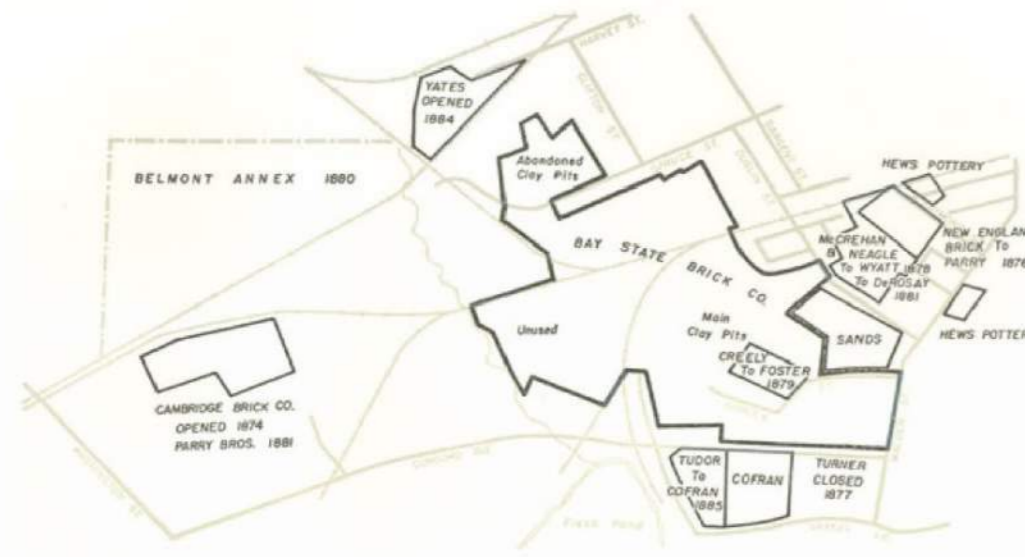


**1847-1952** Brick Making

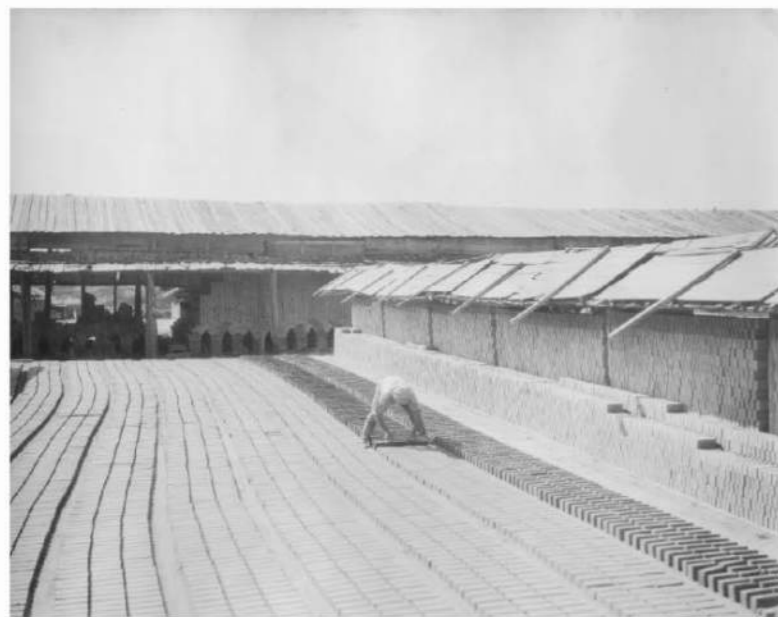
**1952-1971** Landfill

**1970s - 1980s** MBTA Red-line  
Soils Disposal

**1990- Present**



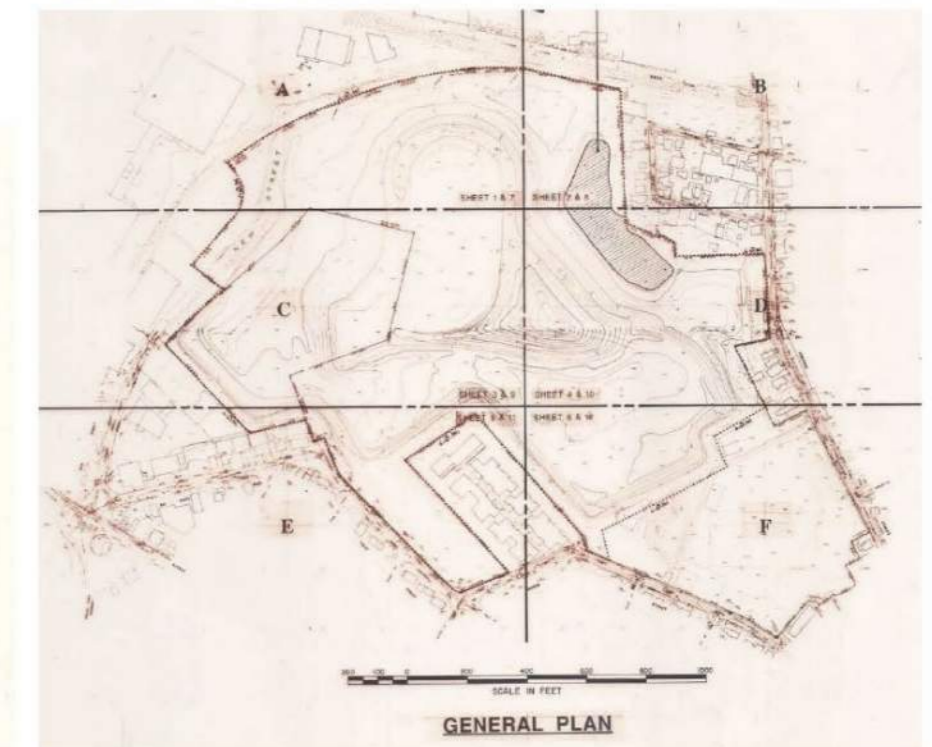
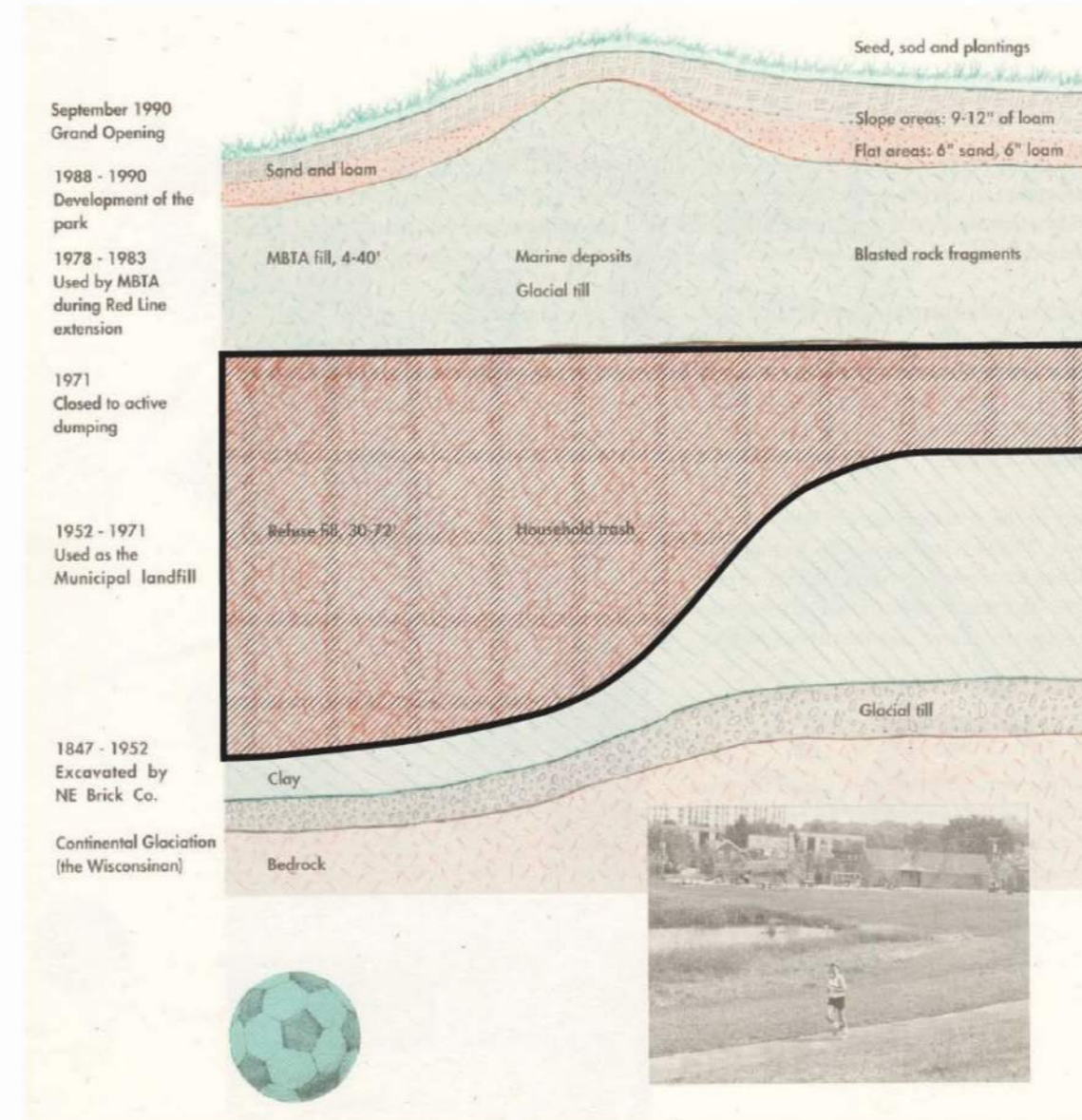
CAMBRIDGE BRICKYARDS AND CLAY PITS, 1854-1916  
Compiled from maps of the Cambridge Historical Commission  
by Charles W. Eliot, and (1971)



New England Brick Company, Cambridge, MA (source:  
<https://historycambridge.org/articles/the-romance-of-brick/>)



Former Cambridge City Dump, MA (source: <https://historycambridge.org/articles/the-downside-of-progress/>)



Danehy Park Improvements - September 1987

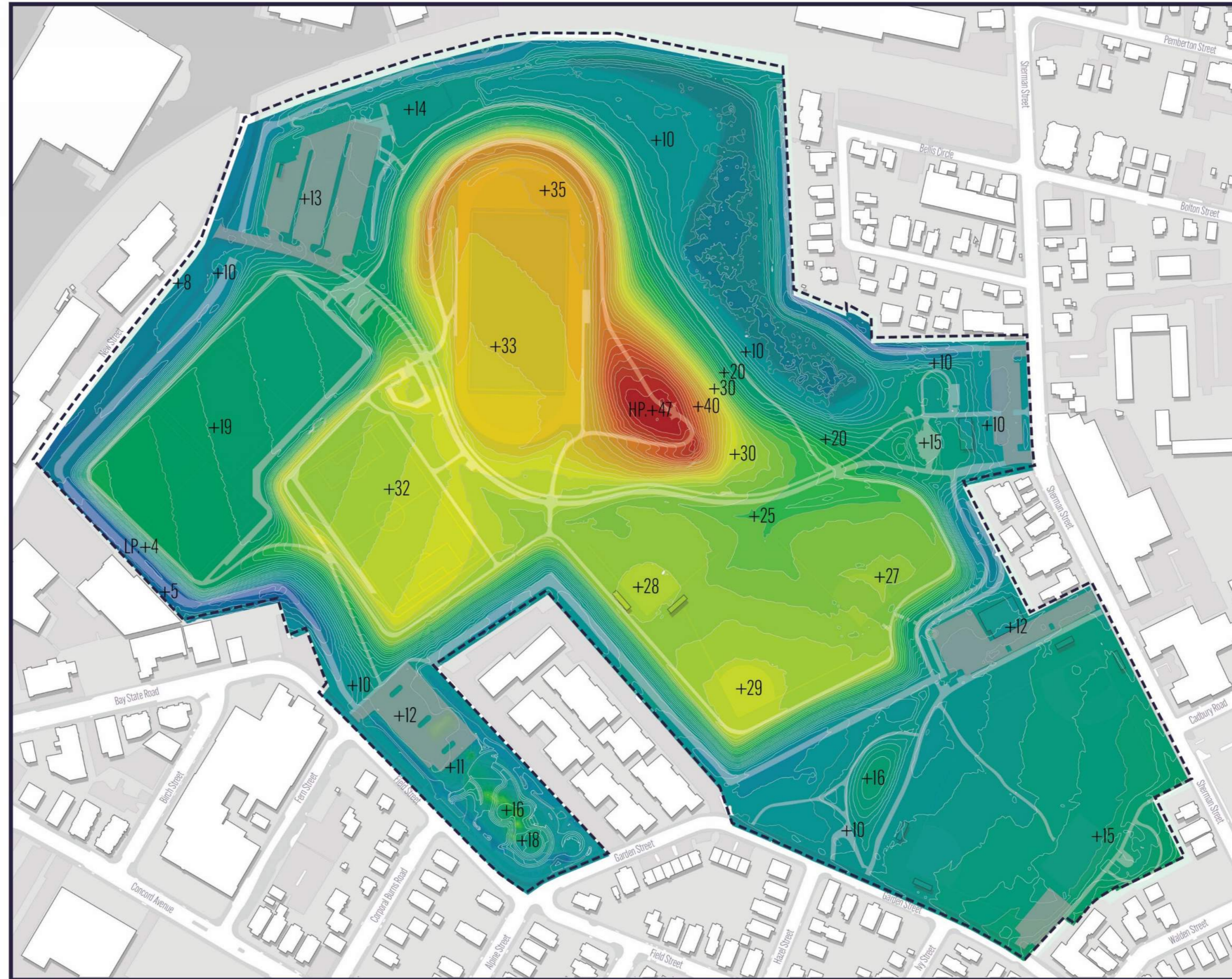


Overlooking Danehy's Jurisdictional Wetland (source:  
<https://topbrunchspots.com/wp-content/uploads/2022/05/AF1QipM-sYZ2P4HL3oAetwpgtIm1DN-FCFXMeSsVGkRw1600-h1000-k-no-1024x576.jpeg>)



# SITE TOPOGRAPHY

The land on which Danehy Park sits today was a clay excavation from 1847 until 1952, a landfill until the early 1970s, then a construction staging area for the Red Line extension to Alewife, until in 1990 Danehy Park was opened to the public as a 50-acre park with sports fields, wetlands, and landscapes.



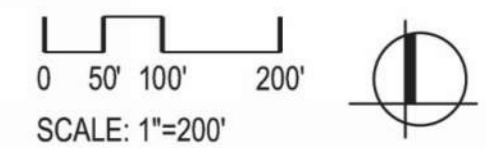
## LEGEND

Topographic elevations in ft.



## Sources:

Topography information from Cambridge GIS accessed October 2023.



**+41'**  
Above  
sea level

**+16'**  
Above  
sea level

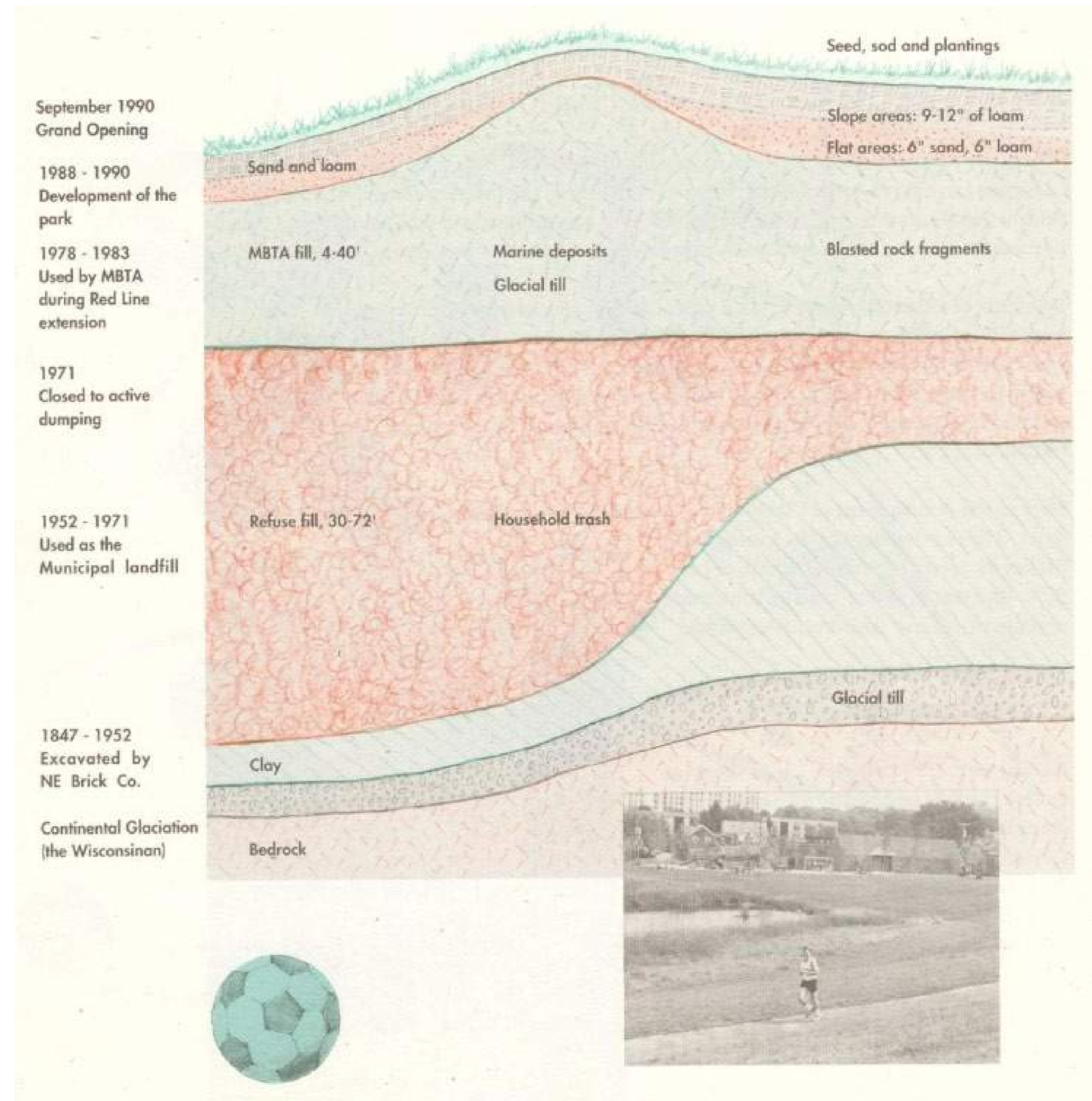
**+10'**  
Above  
sea level

# CONSTRUCTION CHALLENGES

Building on a landfill has its complexities because a landfill settles (or sinks) over time as weight is added to the top of the trash and as the trash decomposes.

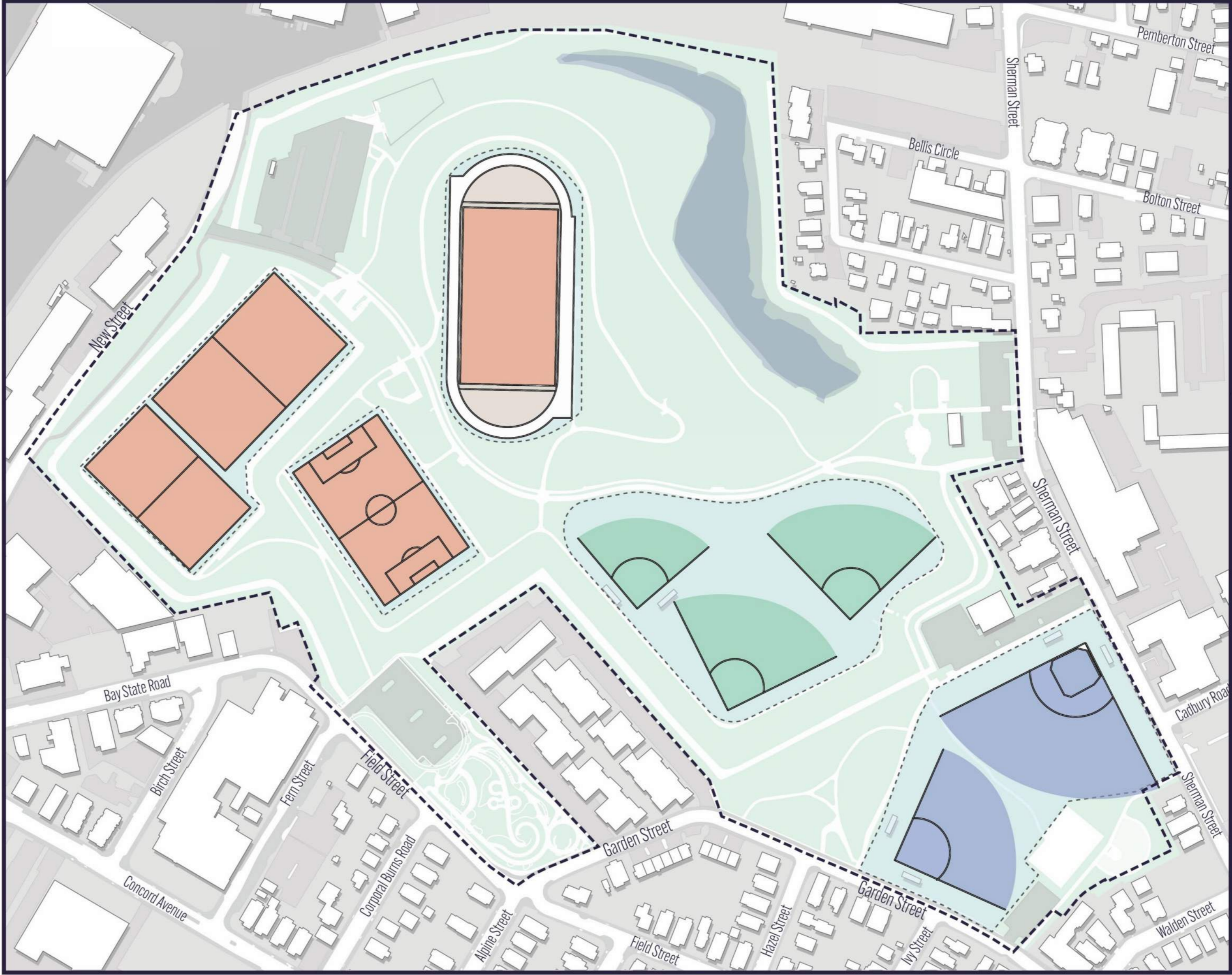
The City consistently monitors the methane on the site.

The landfill is covered with clean soil of varying depths.



# SITE DESIGN CONSIDERATIONS- SPORTS FIELDS

Athletic fields to remain in current locations.



# SITE DESIGN CONSIDERATIONS – TREE CANOPY AND WETLANDS

Impact to the wetland, and removal of trees to be kept to an absolute minimum.



# SITE DESIGN CONSIDERATIONS – PUBLIC ART

Public art program to remain and be strengthened.



**3**  
Galaxy Dance Floor and  
17 Art Blocks  
  
Artist: Mierle Ladreman Ukeles  
Year: 2001  
Material: Recycled rubber



**4**  
Throne Room for the King and  
Queen of the Hill  
  
Artist: Mierle Ladreman Ukeles  
Year: 2004  
Material: Cast aluminum sculpture



**7**  
Floating Stones  
  
Artist: Edward Levine  
Year: 1992  
Material: Granite block with steel  
inlay



**1**  
Hockney by Holly  
  
Artist: Holly Alderman  
Year: 2001  
Material: Mural



**5**  
Wavers and Smellers  
  
Artist: Mierle Ladreman Ukeles  
Year: 1993  
Material: Plantings



**8**  
Brine Tanks Mural  
  
Artist: Monique Aimee  
Year: 2020  
Material: Mural



**2**  
Wheeler Water Garden Mural  
  
Artist: Dawn Evans Scaltreto  
Year: 2001  
Material: Mural



**6**  
Glassphalt Path  
  
Artist: Mierle Ladreman Ukeles  
Year: 1993  
Material: Recycled glass in asphalt

## Image Sources:

- <https://www.waymarking.com/gallery/image.aspx?f=1&guid=adf08d56-0c2f-4819-b2dd-92266993a02f>
- [https://www2.cambridgema.gov/cac\\_5\\_4\\_2009/public\\_progress\\_1.html](https://www2.cambridgema.gov/cac_5_4_2009/public_progress_1.html)
- City of Cambridge, Cambridge Arts Council
- City of Cambridge, Cambridge Arts Council
- [https://www.cambridgema.gov/-/media/Images/artscouncil/publicartwebsite/2021publicartmap/CAC\\_99\\_10\\_5\\_Ukeles.JPG](https://www.cambridgema.gov/-/media/Images/artscouncil/publicartwebsite/2021publicartmap/CAC_99_10_5_Ukeles.JPG)
- City of Cambridge, Cambridge Arts Council
- <http://www.edlevineartist.com/works/floatingstones/>
- <https://moniqueaimee.com/brine-tank-mural>

# SITE DESIGN CONSIDERATIONS – PUBLIC ART

Public art program to remain and be strengthened.



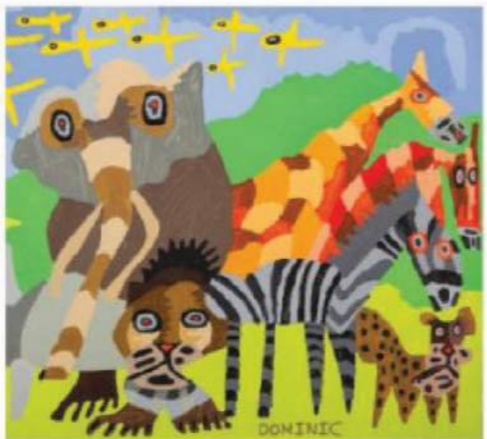
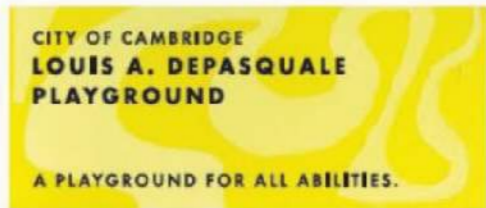
**7**  
Sensory Hilltop  
Artist: Mitch Ryerson  
Year: 2021  
Material: Black Locust, Ipe, Accoya, Stone, and Copper



**1**  
A collection of 12 artworks by Dominic Killiany installed as part of the Louis A. Despasquale Playground  
Year: 2021  
Original Artwork Year: 2013-2015  
Material: Color pigments printed onto aluminum panel and shade sail

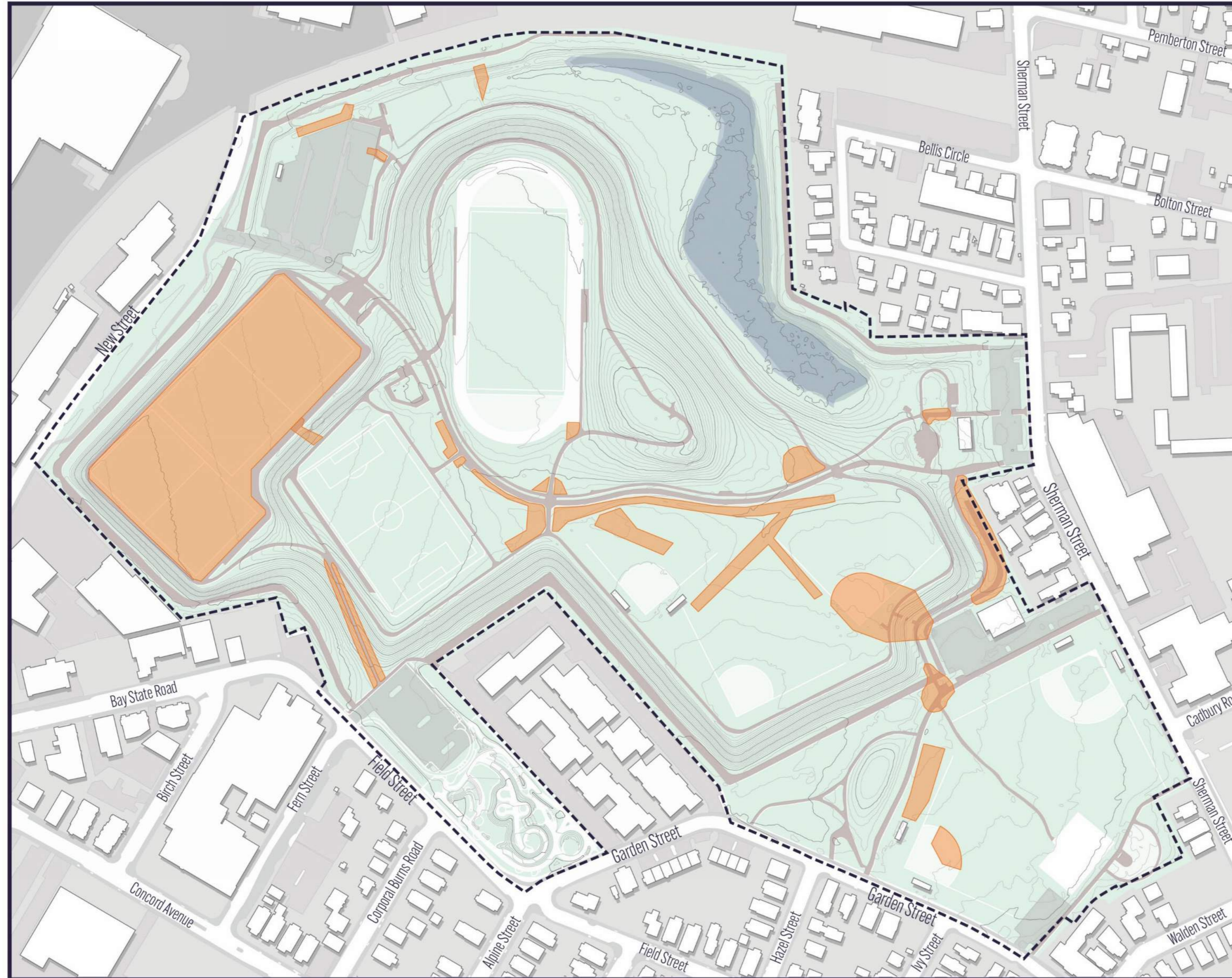


**8**  
Pipe Dreams  
Artist: NuVu Studio  
Year: 2021  
Material: Accoya Wood



- Image Sources:
1. [www.dominiccreations.com/](http://www.dominiccreations.com/)
  2. Weston & Sampson Archives.
  3. [www.dominiccreations.com/](http://www.dominiccreations.com/)
  4. [www.dominiccreations.com/](http://www.dominiccreations.com/)
  5. Weston & Sampson Archives.
  6. [www.dominiccreations.com/](http://www.dominiccreations.com/)
  7. Cambridge Arts Council Facebook Page.
  8. Cambridge Arts Council Facebook Page.

# OVERALL SITE NEEDS - DRAINAGE



LEGEND:

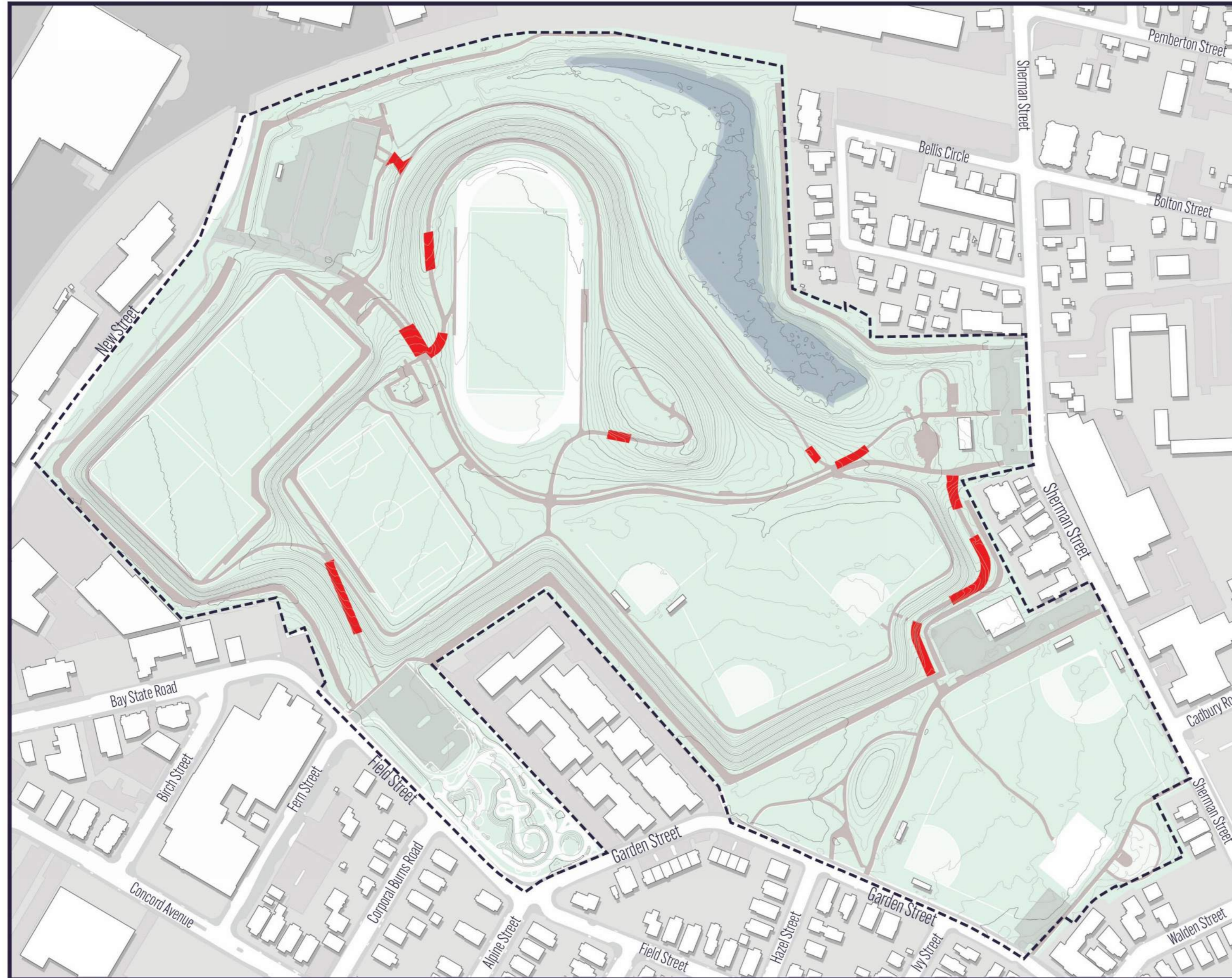


Drainage Issues





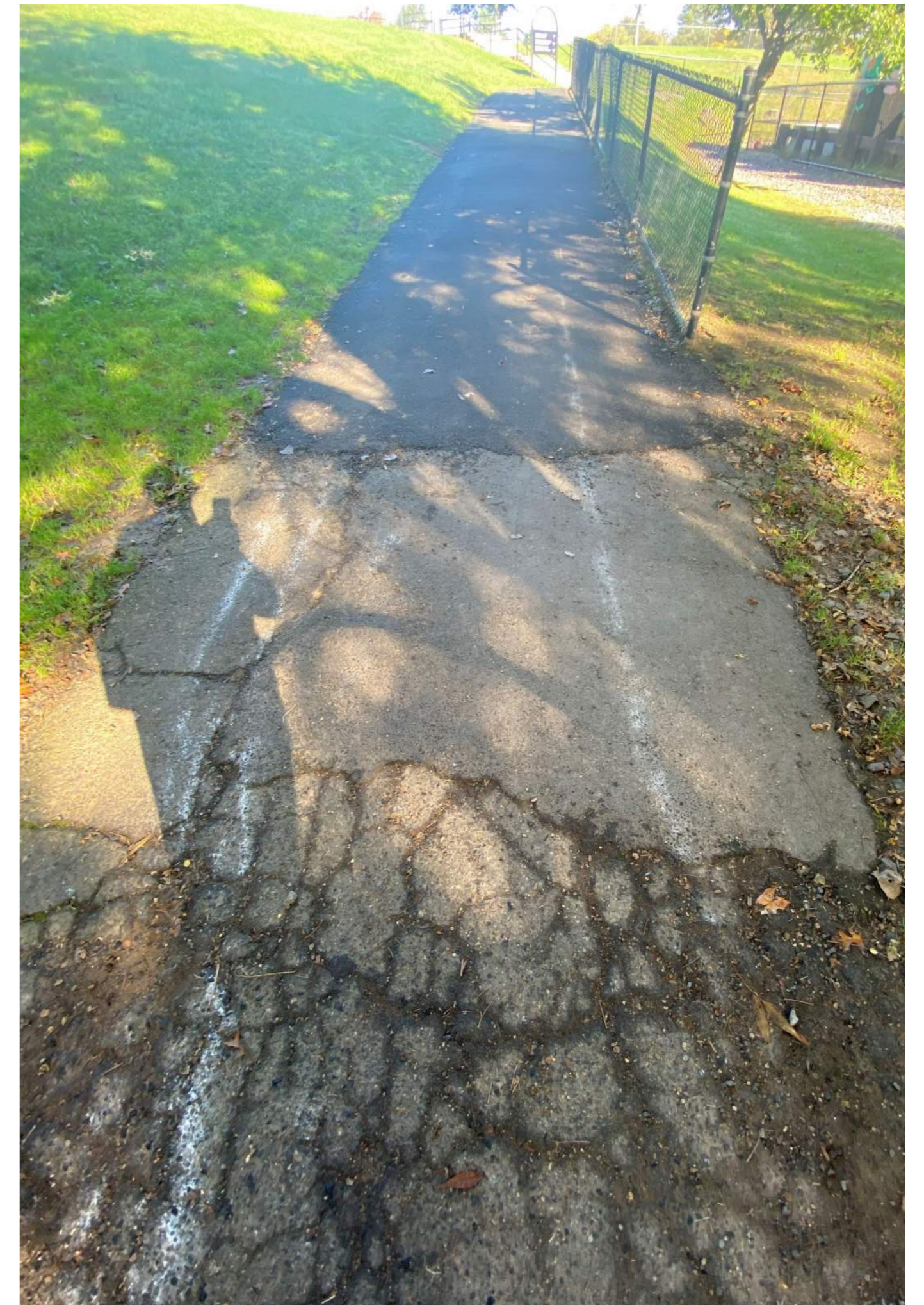
# OVERALL SITE NEEDS – ACCESSIBILITY



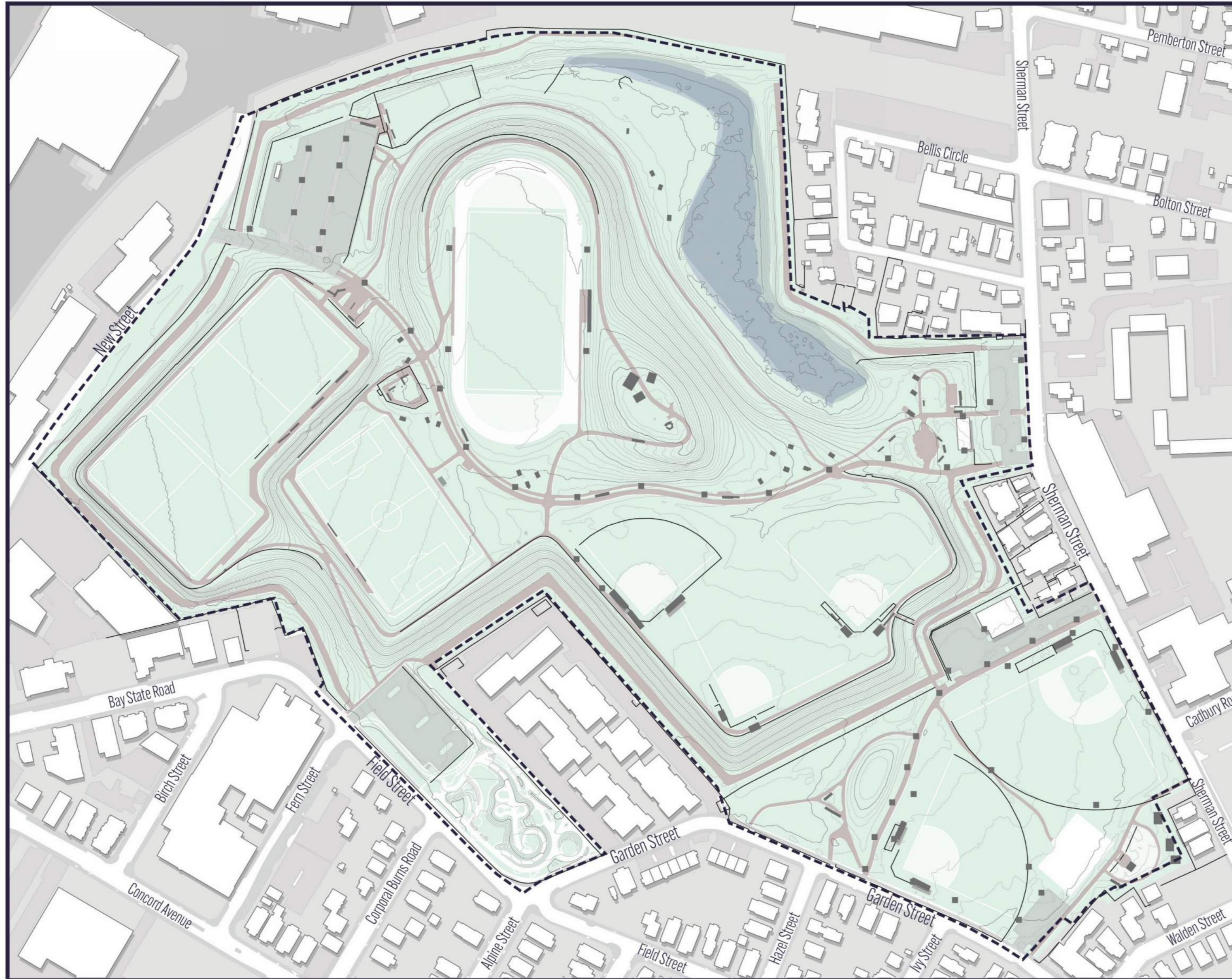
LEGEND:



In-accessible path  
(ada/maab)



# OVERALL SITE NEEDS – PARK OVERALL



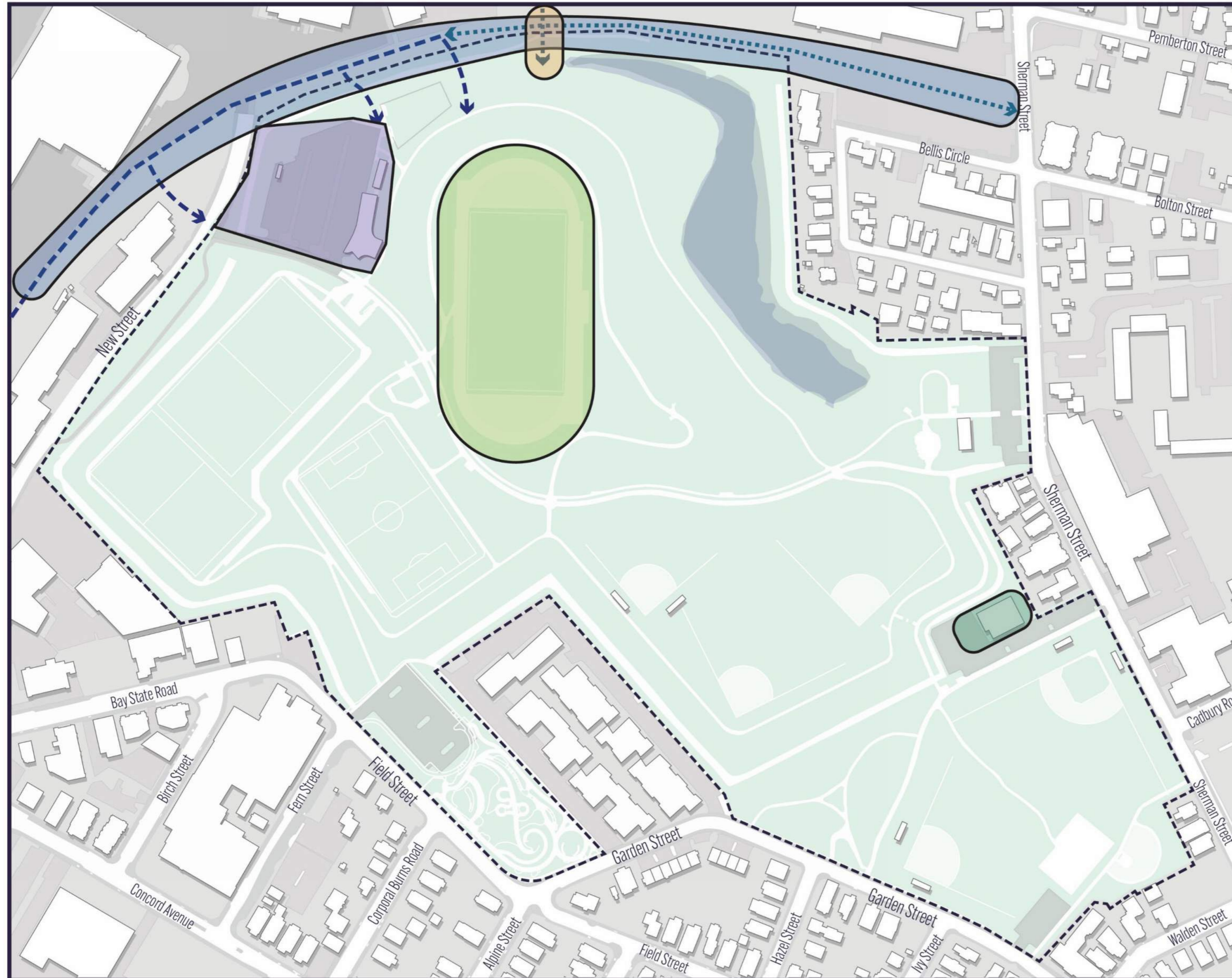
LEGEND:








PARK AMENITIES



# PROJECT CURRENTLY UNDERWAY



## LEGEND:

-  Track and turf field replacement
-  Pavilion building and parking lot
-  Salt shed improvements.
-  Danehy/New street multiuse path
-  Pedestrian/Bike bridge over the Fitchburg line tracks



<https://www.cambridgema.gov/Departments/PublicWorks/CityProjects/2023/DanehyGatewayPavilionProject>

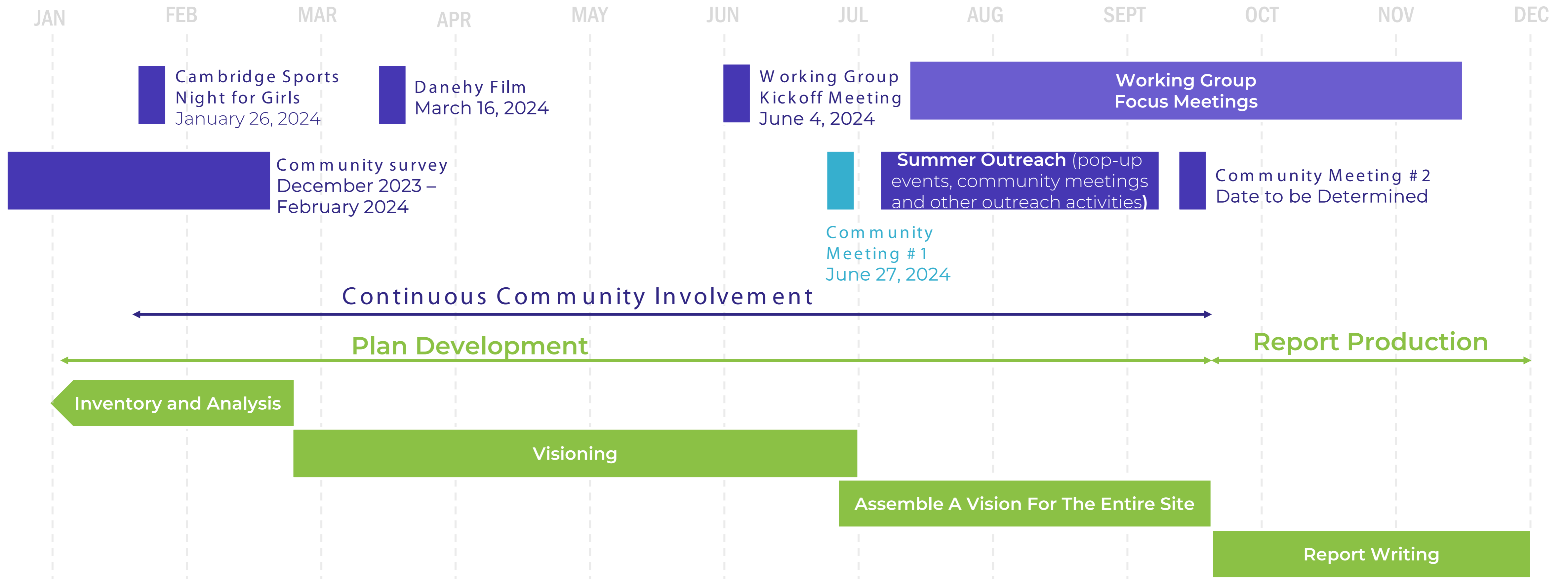
# PROJECT CURRENTLY UNDERWAY

For more information, refer to the City websites listed below:

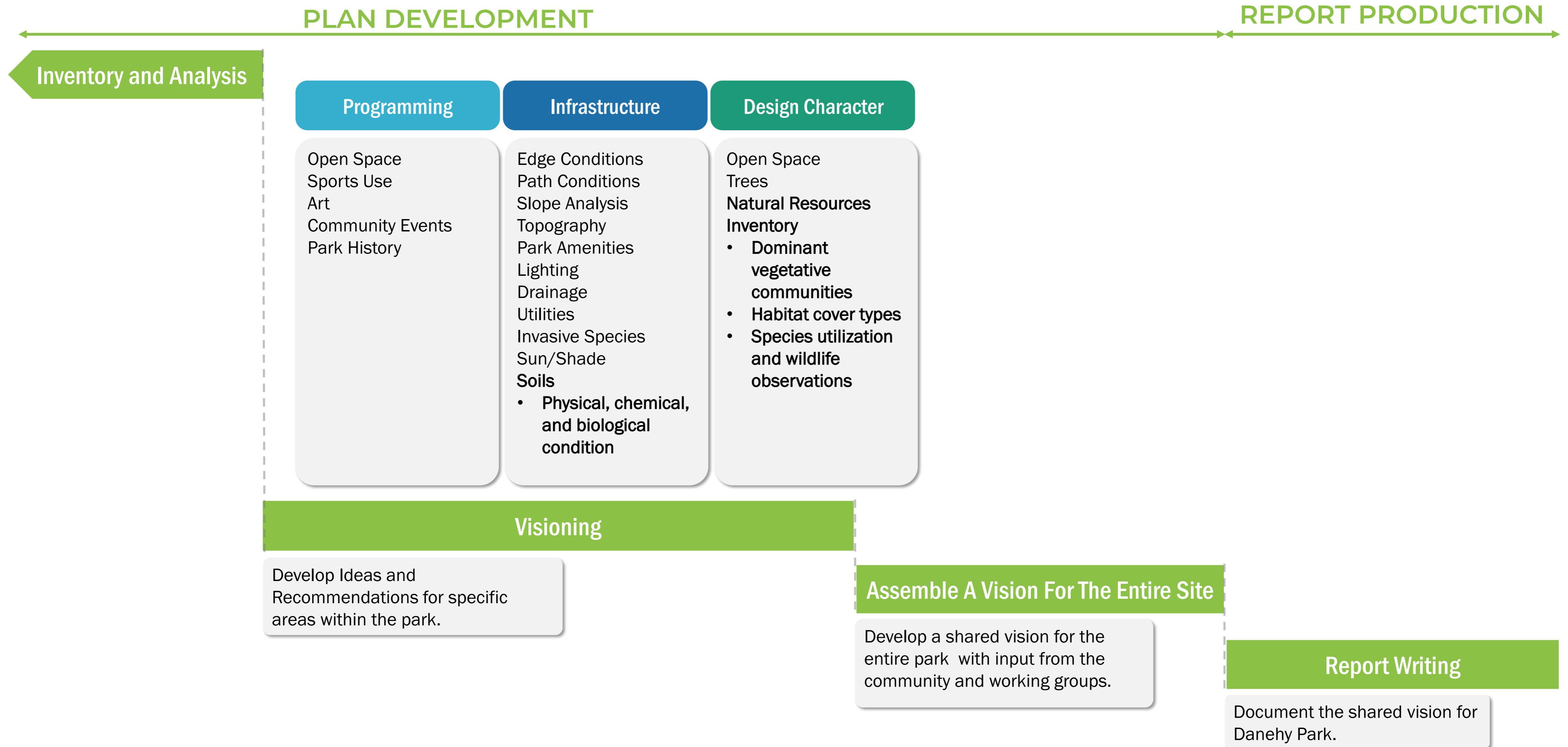
- Track and turf field replacement.
- Pavilion building and parking lot:  
<https://www.cambridgema.gov/Departments/PublicWorks/CityProjects/2023/DanehyGatewayPavilionProject>
- Salt shed improvements.
- Danehy/New street multiuse path:  
<https://www.cambridgema.gov/Departments/communitydevelopment/danehyParkconnector>
- Pedestrian/Bike bridge over the Fitchburg line tracks:  
<https://www.cambridgema.gov/Departments/communitydevelopment/fitchburgcommuterrailincrossingstudy>

# COMMUNITY INVOLVEMENT

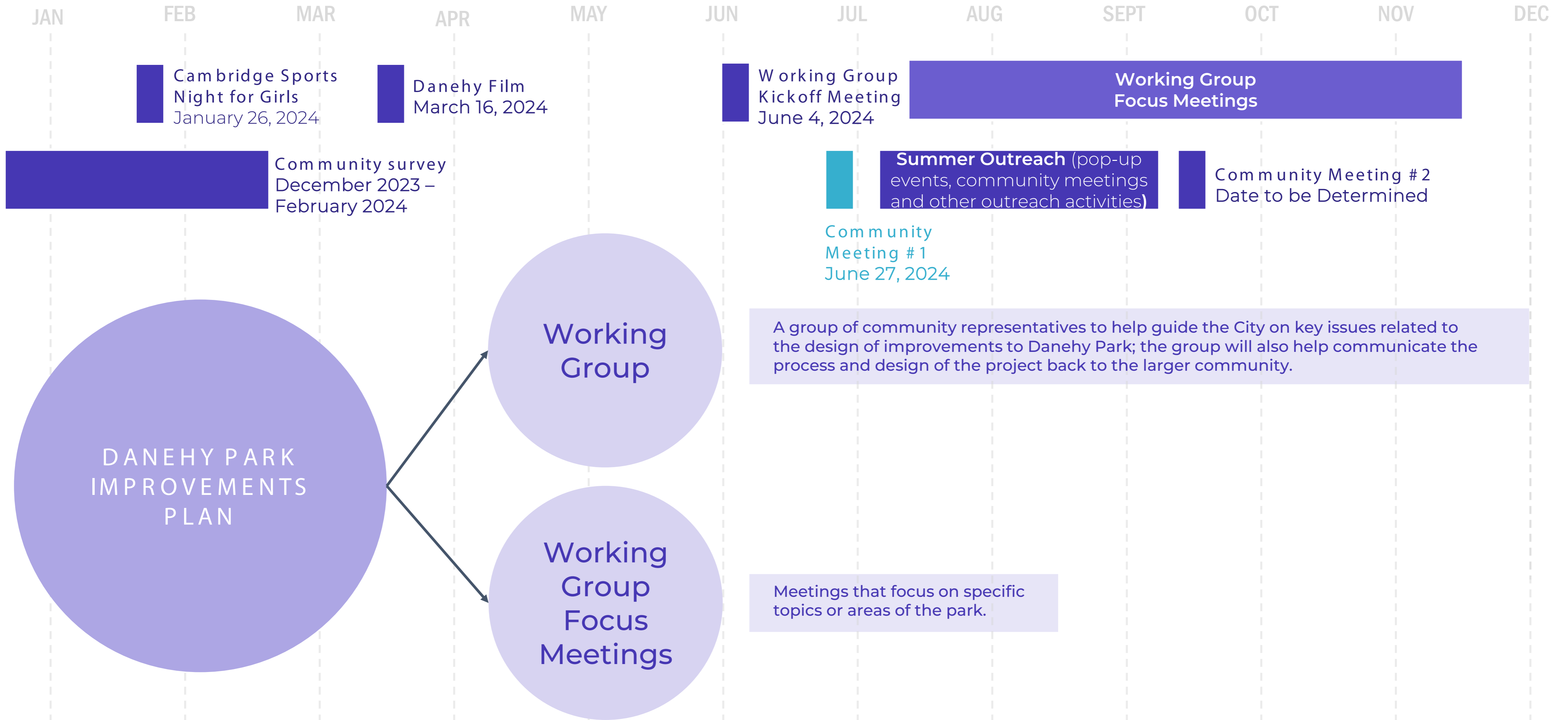
# PROJECT SCHEDULE



# PROJECT SCHEDULE – PLAN DEVELOPMENT



# PROJECT SCHEDULE – COMMUNITY ENGAGEMENT





# WHAT WE'VE HEARD SO FAR – ONLINE SURVEY

 **955** Online Survey Responses

**9** Languages Survey open from December 2023 - February 2024

### What people like the most about Danehy Park

-  Open space and access to nature
-  Organized and pick-up sports
-  Walking/biking paths
-  Connecting with community members
-  Size and location
-  The diversity of spaces and users

### What people want added or improved in Danehy Park

-  Upgrading sports and play infrastructure
-  Adding an indoor sports/community center
-  More trees, natural areas, and seating
-  More permanent bathrooms and water fountains
-  Improved lighting
-  Improved drainage
-  Improved signage
-  More events and gathering spaces

**68%** of survey respondents live in North Cambridge, Neighborhood Nine, or West Cambridge

**47%** of survey respondents are between the ages of 35 and 54

*"I love that the community comes together for Soccer Saturdays!"*

*"Danehy Park is an accessible outdoor space with multiple uses for my family: playgrounds, fields, and water features."*

# WHAT WE'VE HEARD SO FAR – IN PERSON ENGAGEMENT

Cambridge Sports Night for Girls – January 2024  
 Open Space Film Showing – March 2024

“Plant trees in the dog park and put in a dog friendly surface”

“It is great as is”

“More native plantings”

“re-wild portions of the park”

“Add a parkour park”

“There seem to be drainage issues”

“Add benches and/or places for spectators in inclement weather.”

“improve the track”

“would be awesome to not sled into the reeds”

“take better care of the walk that hugs the fence”

“More signage to show a map of the paths and the distance of each”



# PROJECT THEMES

# CREATE HIGH QUALITY SOCIAL SPACES



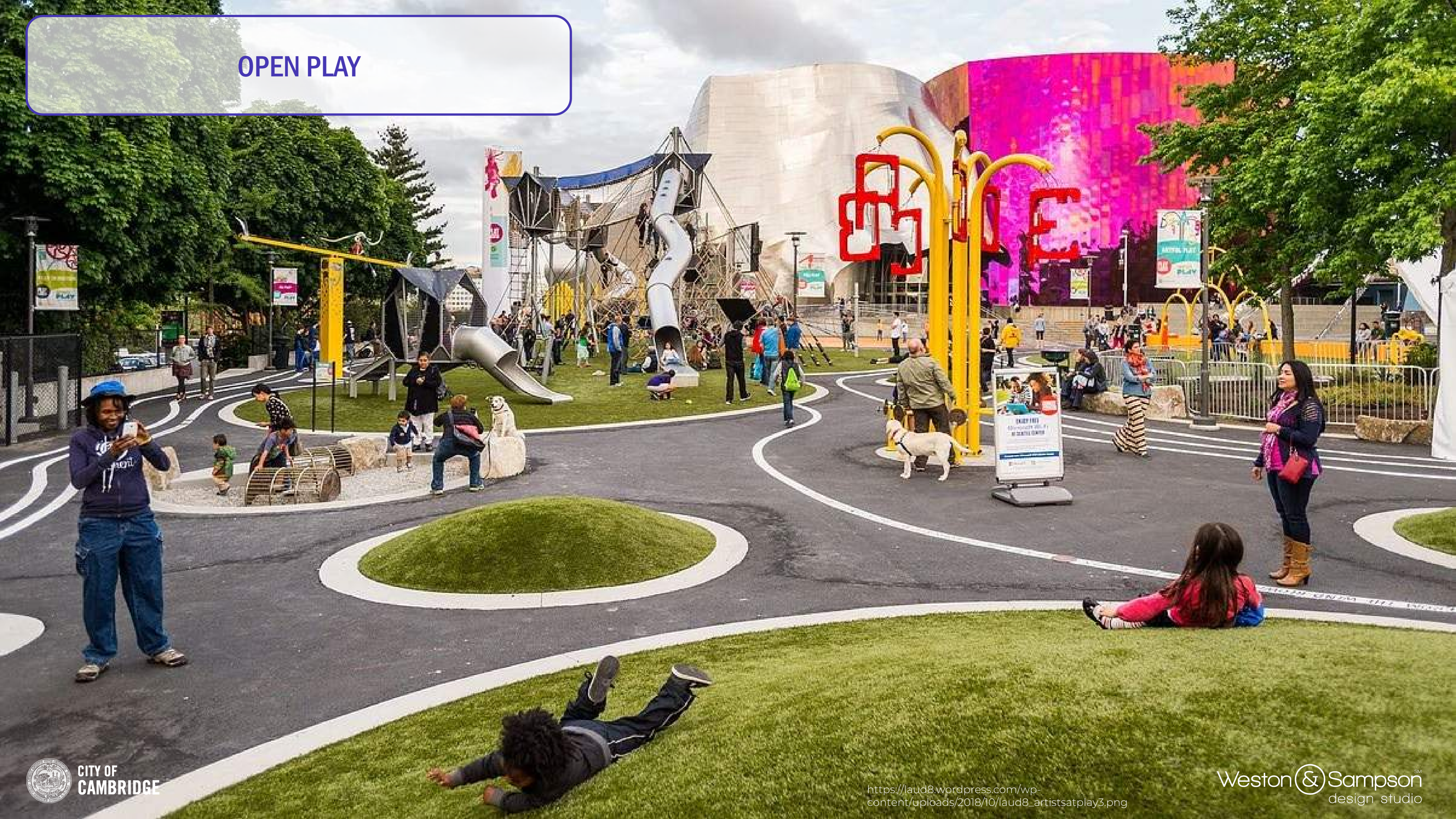
# SPACE FOR CASUAL PLAY



# SPORTS AND ORGANIZED PLAY



OPEN PLAY



# MITIGATE HEAT ISLAND



# ENHANCE ECOLOGY



# PRELIMINARY PROJECT THEMES

## WHAT ARE WE MISSING?

CREATE HIGH  
QUALITY SOCIAL  
SPACES

SPORTS

ENTRANCES AND  
CIRCULATION

NATURAL  
CHARACTER

PROVIDE BETTER  
DRAINAGE

ARTISTRY AND  
WHIMSY

PLAYGROUNDS  
(OPEN/CASUAL/  
ORGANIZED PLAY)

ENHANCE ECOLOGY

MITIGATE HEAT  
ISLAND



# How You Can Help!

1

Share your ideas tonight:  
What is your vision for Danehy Park?  
Where do you think improvements  
can be made?

2

Share your input on what voices  
should be brought into focus group  
conversations?

3

Spread the word about upcoming  
community events!