

DANEHY PARK

Working Group Kickoff Meeting

June 4, 2024



**CITY OF
CAMBRIDGE**

Weston & SampsonSM
design studio



AGENDA

01

Project Team

02

Project Introduction

03

Project Schedule

04

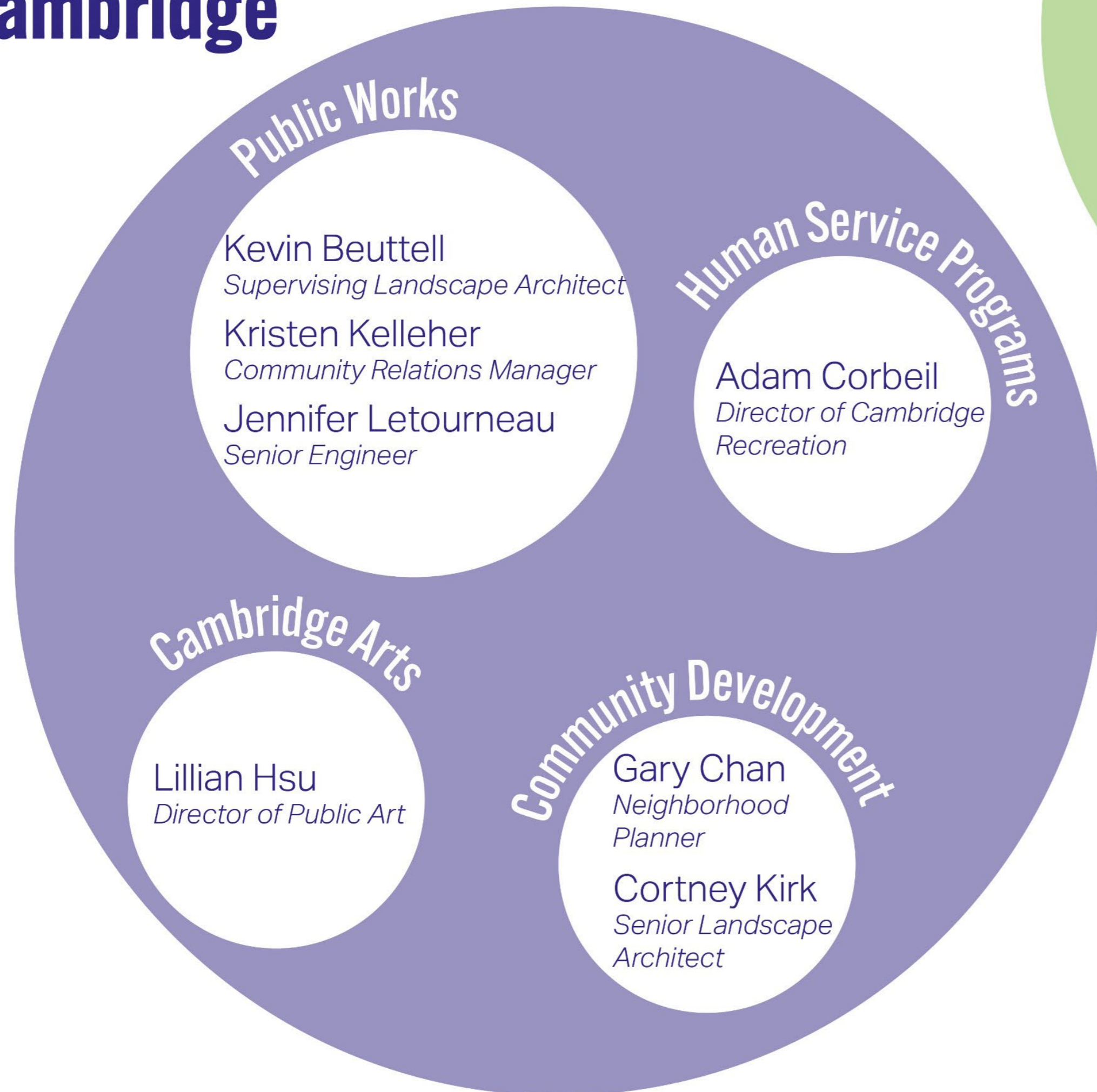
Community Involvement

05

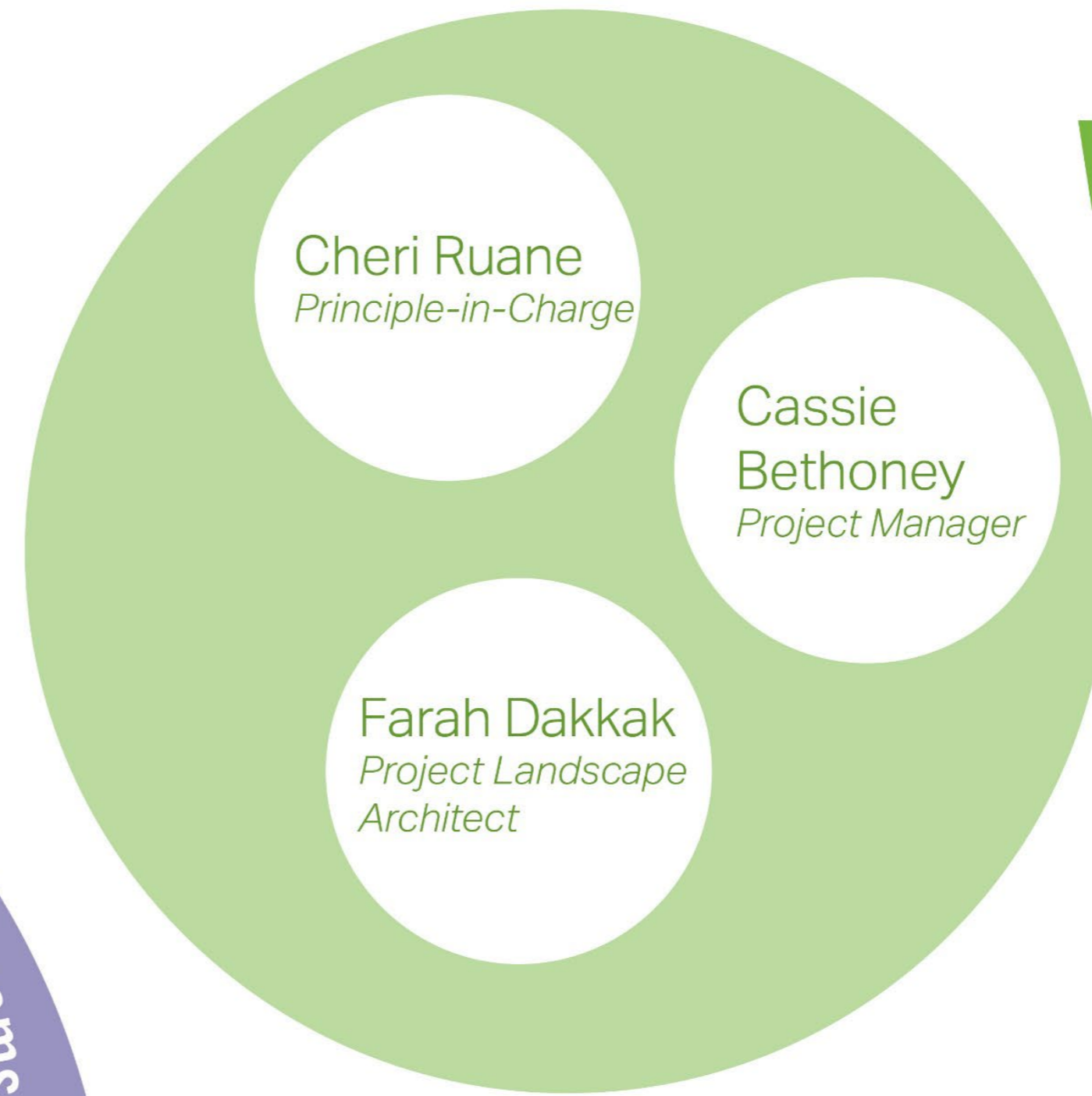
Project Themes and How You Can Help!

PROJECT TEAM

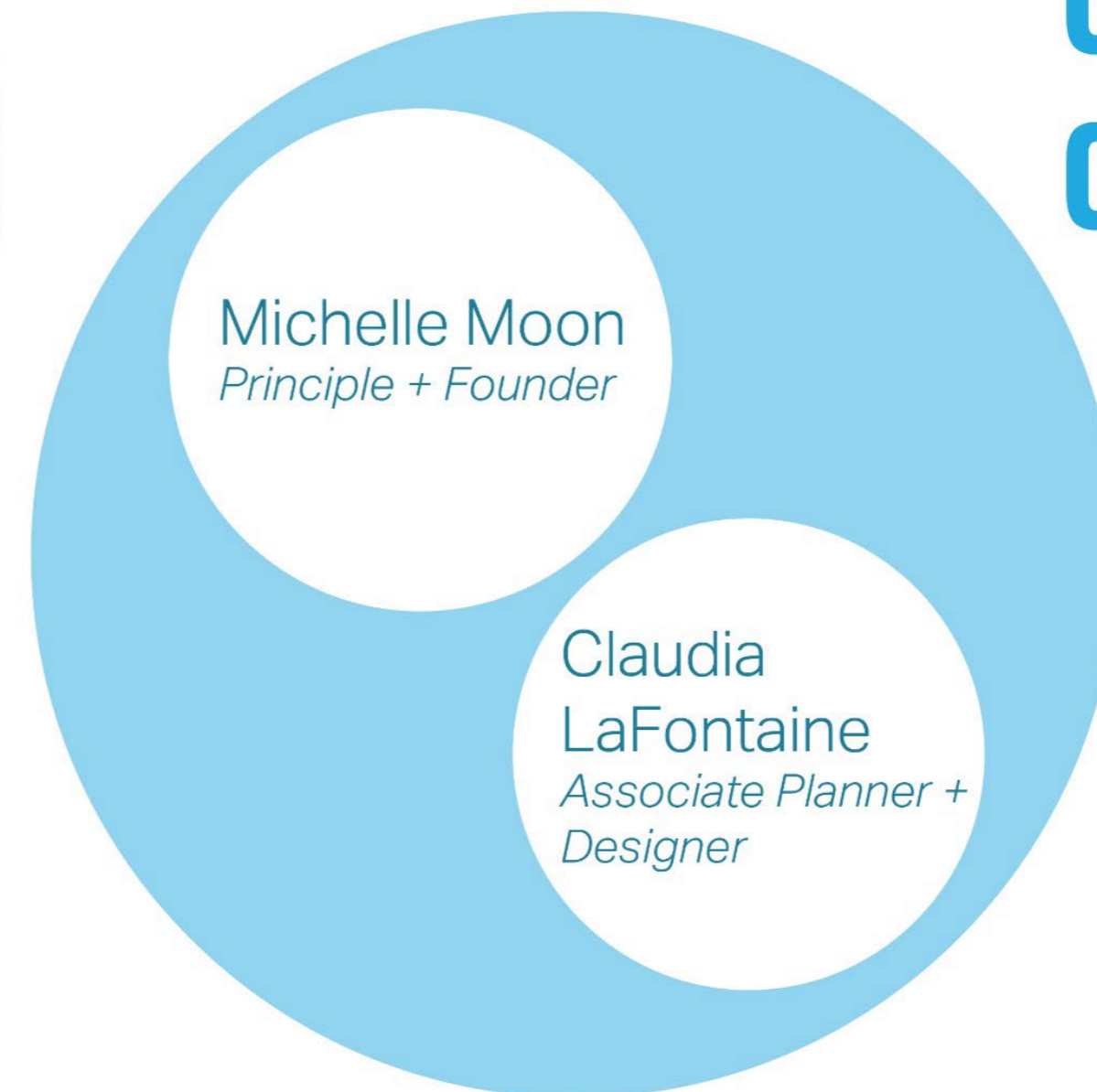
City of Cambridge



Weston & Sampson



Civic Space Collaborative



PROJECT INTRODUCTION

DANEHY PARK IS A...

Neighborhood park for “everyday” needs, as well as a venue for “big day” annual events.









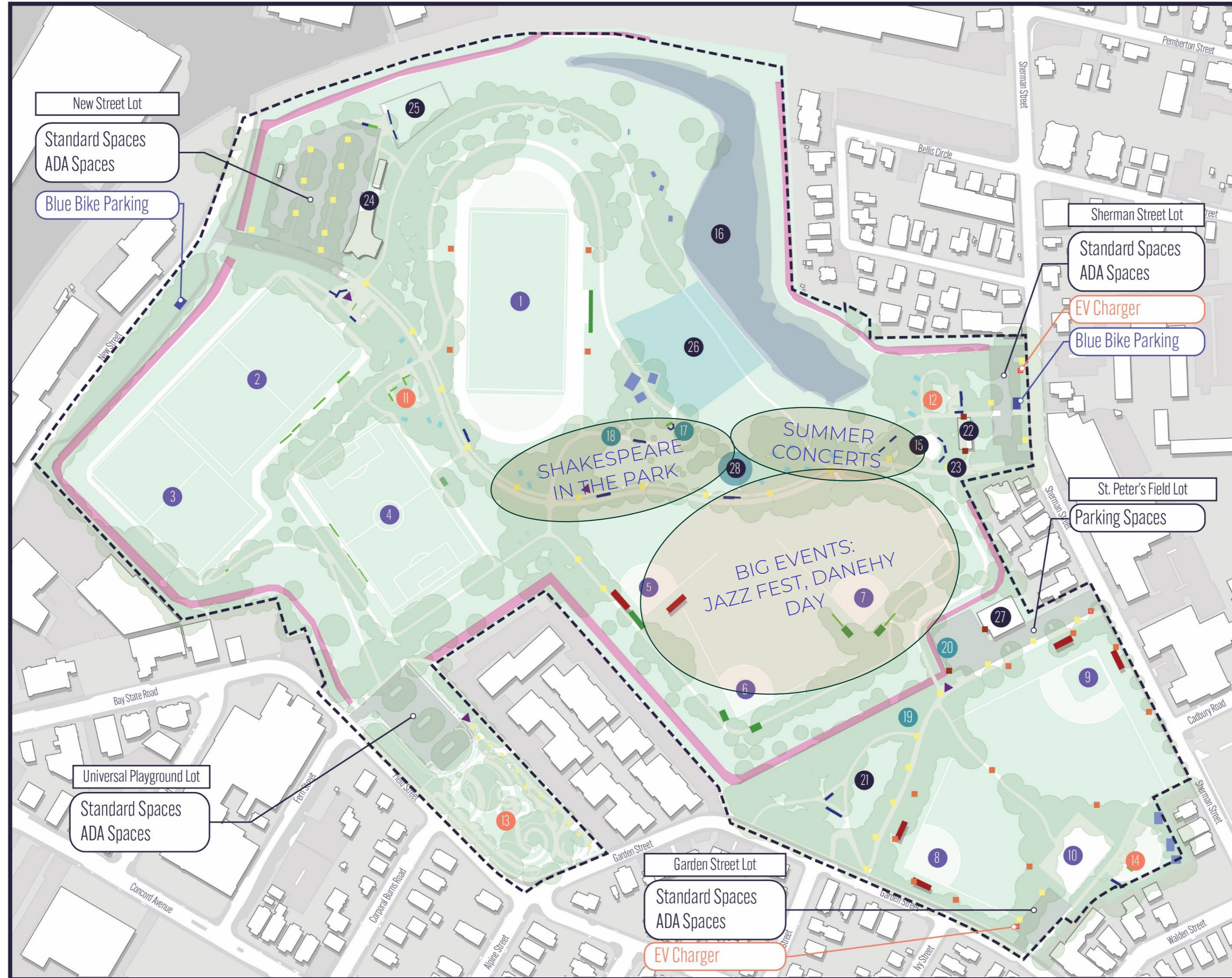






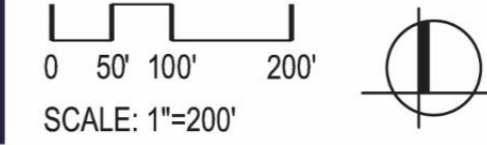


DANEHY PARK AMENITIES AND EVENT AREAS

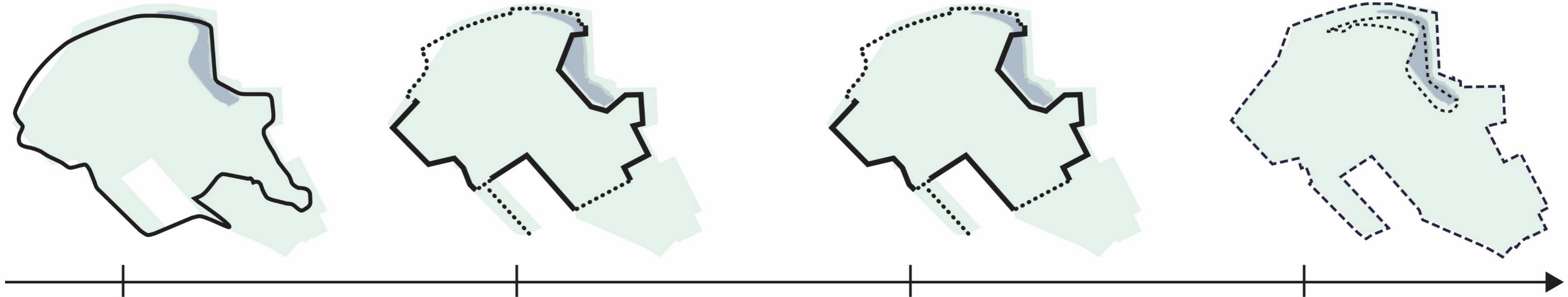


LEGEND

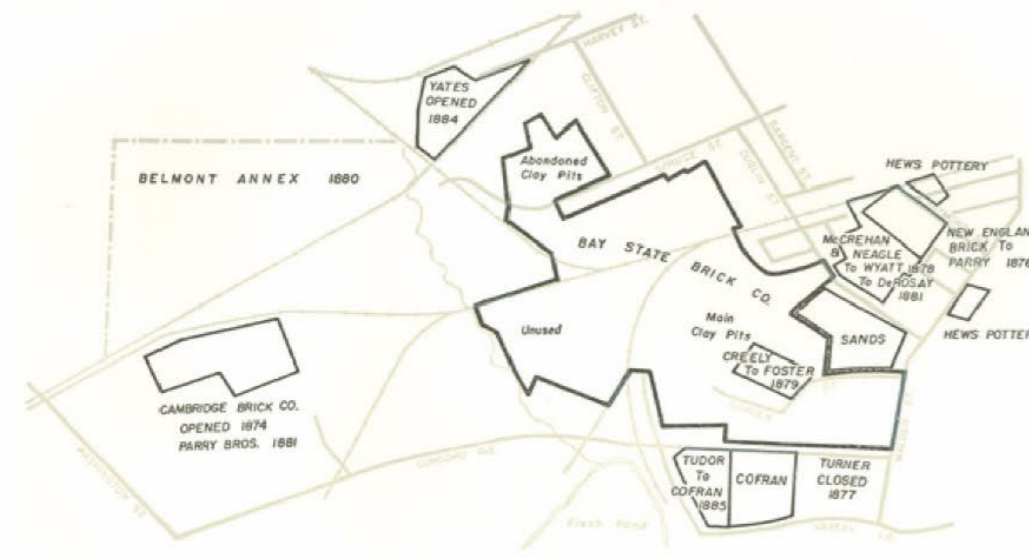
- | | |
|--|--------------------|
| Sports Lighting | Park Benches |
| Pedestrian Lighting | Seating areas |
| Building Lights | Picnic Tables |
| Sports Benches | Port-O-Johns |
| Bleachers | Vent Trench |
| Duggouts | EV Charging |
| 1 Turf Field 4 | Blue Bikes |
| 2 Field 1 | |
| 3 Field 2 | |
| 4 Field 3 | |
| 5 Softball Field #3 | |
| 6 Softball Field #2 | |
| 7 Softball Field #1 | |
| 8 St. Peter's Softball | |
| 9 St Peter's Hardball | |
| 10 Danehy Basket Ball Courts | |
| 11 Danehy 3-6 Playground | |
| 12 Regina Antoine Tot Lot | |
| 13 Cambridge Universal Playground | |
| 14 Dinosaur Playground | |
| 15 Wheeler Water Garden w/ Mural by John Devaney | |
| 16 Jurisdictional Wetland | |
| 17 Galaxy Exploration by Mierle Ladreman Ukeles | |
| 18 Glassphalt Path by Mierle Ladreman Ukeles | |
| 19 Floating Stones by Edward Levine | |
| 20 Brine Tanks Mural by Monique Aimee | |
| 21 Roethlisberger Memorial Park | |
| 22 Sherman St. Restroom w/ Murla by Holly Alderman | |
| 23 Shawn Megan Memorial Garden | |
| 24 Future Gateway Pavillion | |
| 25 Dog Park | 28 Miyawaki Forest |
| 26 Sledding Hill Extents | |
| 27 Salt Shed | |



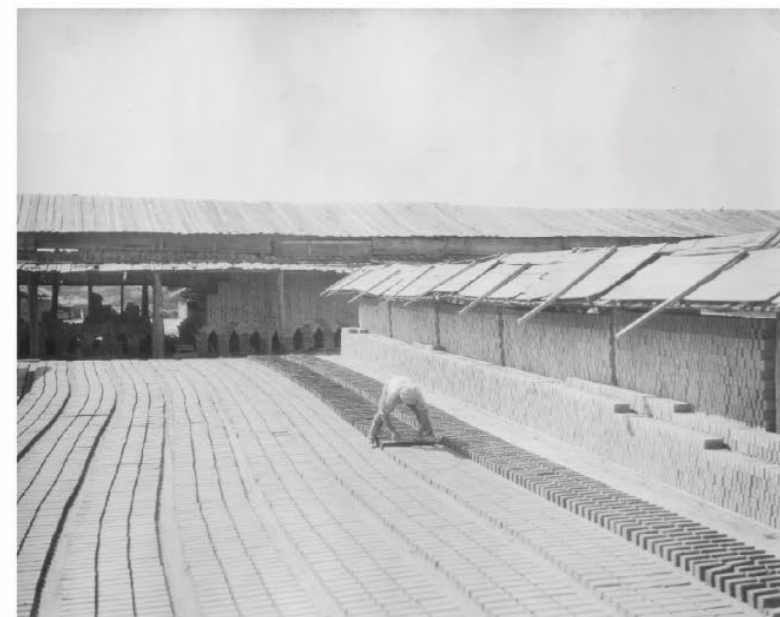
SITE HISTORY



1847-1952 Brick Making



CAMBRIDGE BRICKYARDS AND CLAY PITS, 1854-1916
Compiled from maps of the Cambridge Historical Commission
by Charles W. Eliot, and (1971)



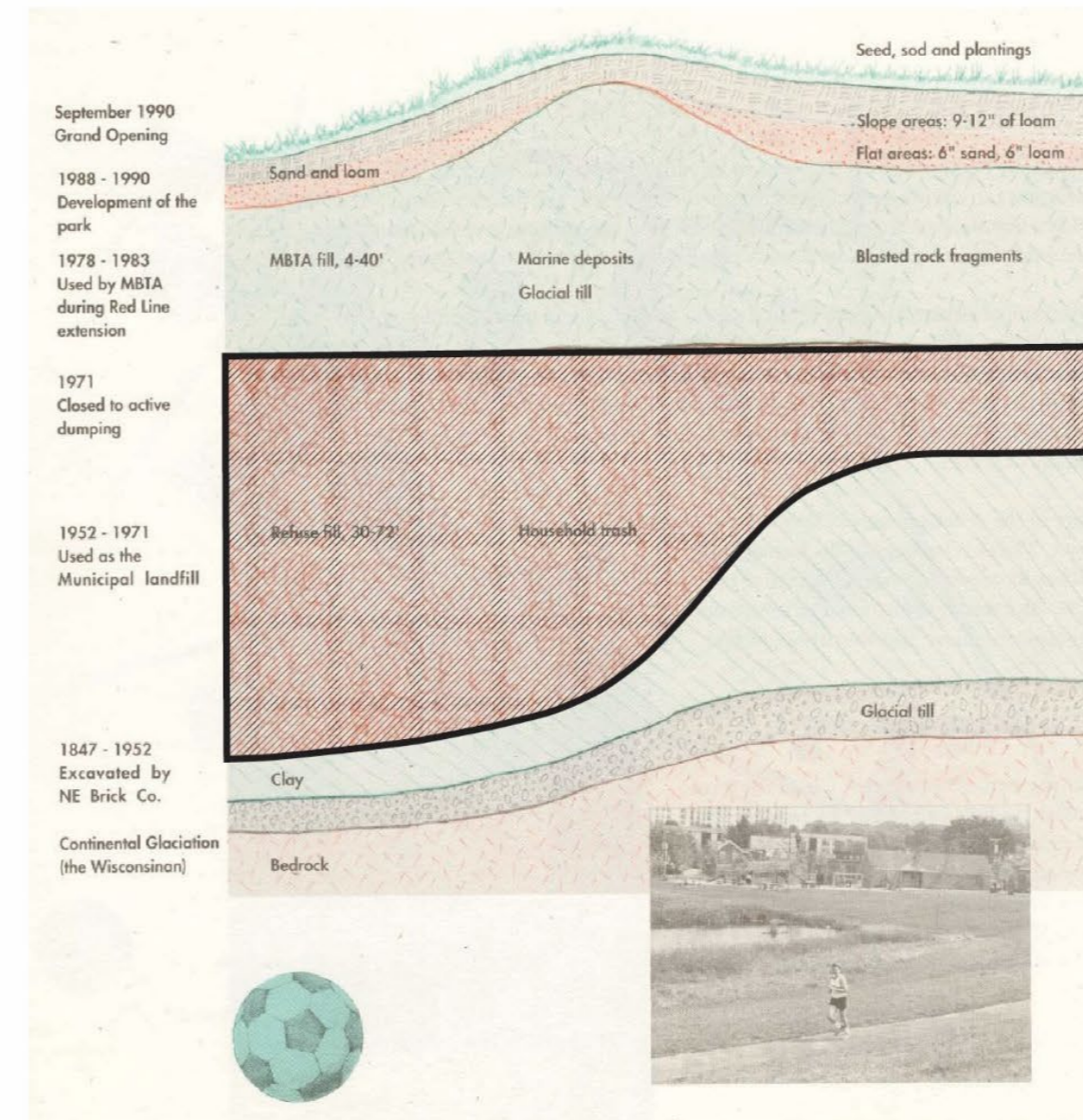
New England Brick Company, Cambridge, MA (source:
<https://historycambridge.org/articles/the-romance-of-brick/>)

1952-1971 Landfill

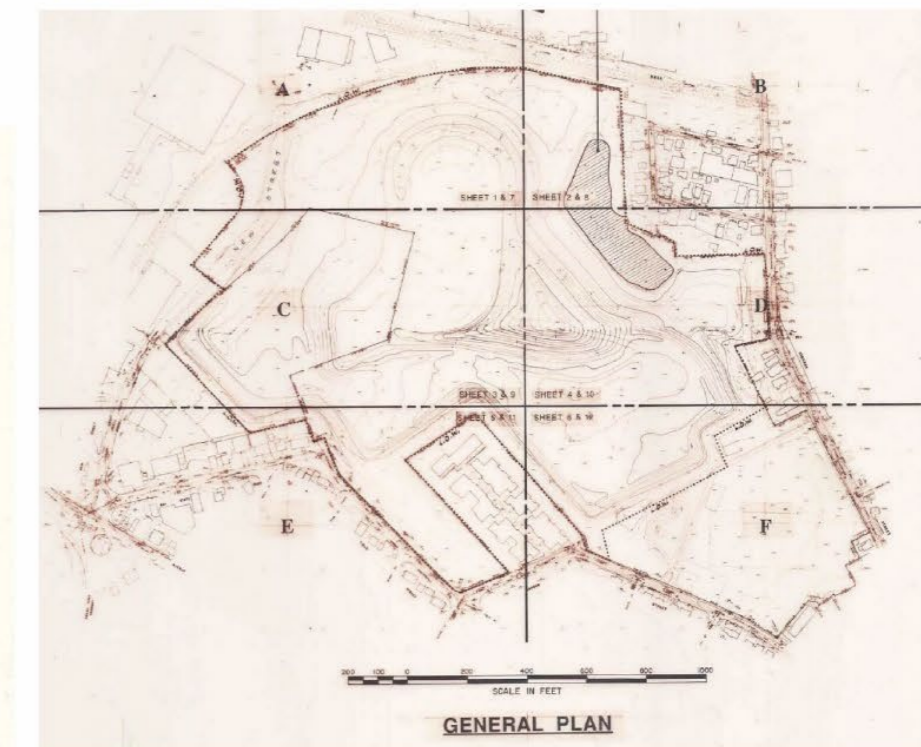


Former Cambridge City Dump, MA (source: <https://historycambridge.org/articles/the-downside-of-progress/>)

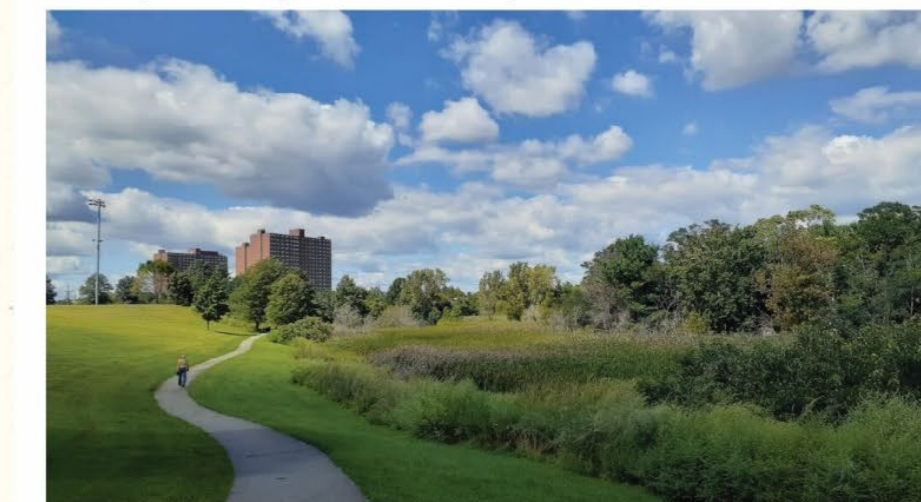
1970s - 1980s MBTA Red-line Soils Disposal



1990- Present



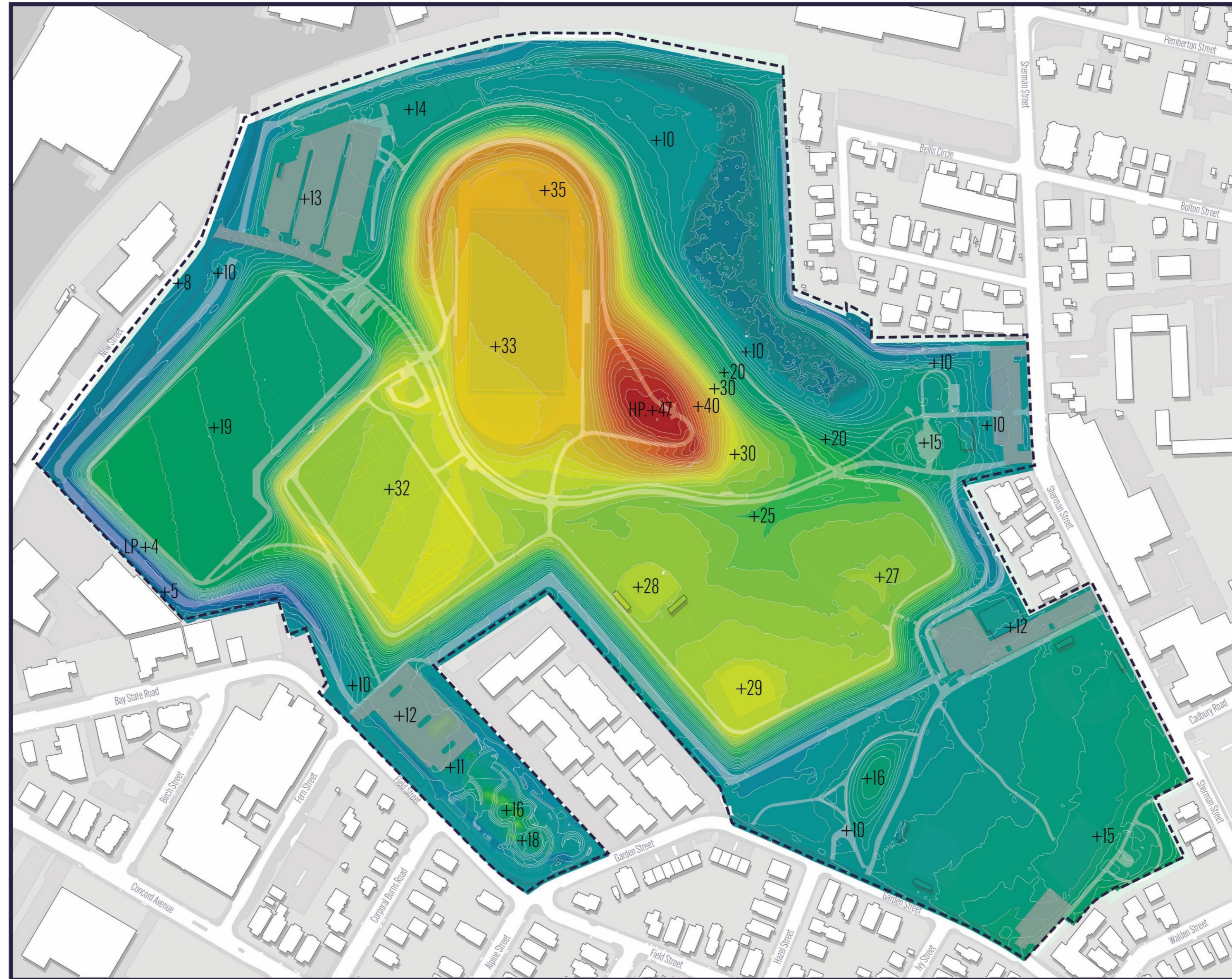
Daney Park Improvements - September 1987



Overlooking Daney's Jurisdictional Wetland (source:
<https://topbrunchspots.com/wp-content/uploads/2022/05/AF1QipM-sYZ2P4HL3oAetwvgtlm1DN-FCFXMeSsVGkRw1600-h1000-k-no-1024x576.jpeg>)

SITE TOPOGRAPHY

The land on which Danehy Park sits today was a clay excavation from 1847 until 1952, a landfill until the early 1970s, then a construction staging area for the Red Line extension to Alewife, until in 1990 Danehy Park was opened to the public as a 50-acre park with sports fields, wetlands, and landscapes.



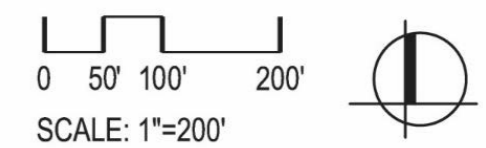
LEGEND

Topographic elevations in ft.



Sources:

Topography information from Cambridge GIS accessed October 2023.



+41'
Above
sea level

+16'
Above
sea level

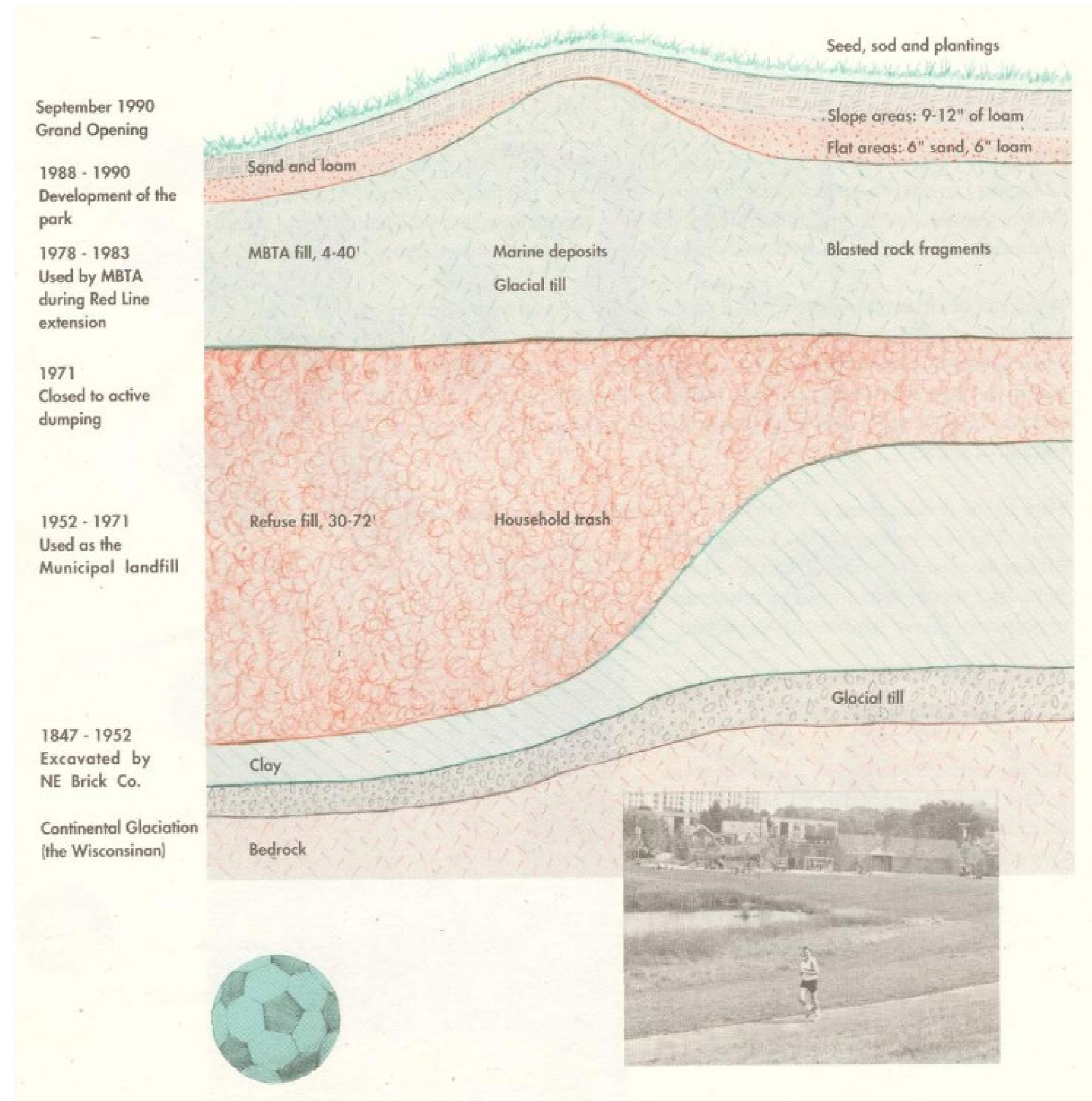
+10'
Above
sea level

CONSTRUCTION CHALLENGES

Building on a landfill has its complexities because a landfill settles (or sinks) over time as weight is added to the top of the trash and as the trash decomposes.

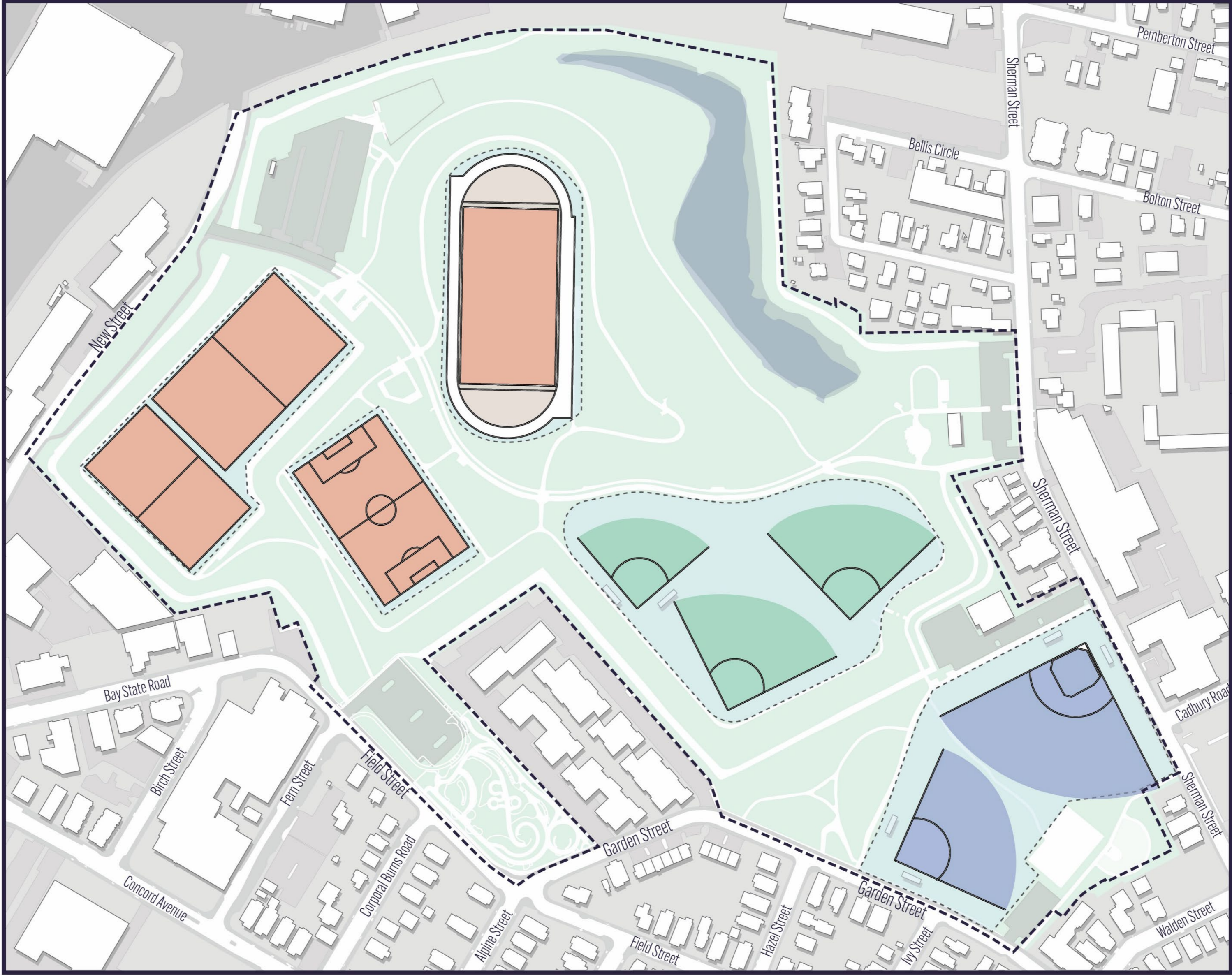
The City consistently monitors the methane on the site.

The landfill is covered with clean soil of varying depths.



SITE DESIGN CONSIDERATIONS- SPORTS FIELDS

Athletic fields to remain in current locations.



SITE DESIGN CONSIDERATIONS – TREE CANOPY AND WETLANDS

Impact to the wetland, and removal of trees to be kept to an absolute minimum.



SITE DESIGN CONSIDERATIONS – PUBLIC ART

Public art program to remain and be strengthened.



3
Galaxy Dance Floor and 17 Art Blocks
Artist: Mierle Ladreman Ukeles
Year: 2001
Material: Recycled rubber



4
Throne Room for the King and Queen of the Hill
Artist: Mierle Ladreman Ukeles
Year: 2004
Material: Cast aluminum sculpture



7
Floating Stones
Artist: Edward Levine
Year: 1992
Material: Granite block with steel inlay



1
Hockney by Holly
Artist: Holly Alderman
Year: 2001
Material: Mural



5
Wavers and Smellers
Artist: Mierle Ladreman Ukeles
Year: 1993
Material: Plantings



8
Brine Tanks Mural
Artist: Monique Aimee
Year: 2020
Material: Mural



2
Wheeler Water Garden Mural
Artist: Dawn Evans Scaltreto
Year: 2001
Material: Mural



6
Glassphalt Path
Artist: Mierle Ladreman Ukeles
Year: 1993
Material: Recycled glass in asphalt

Image Sources:

- <https://www.waymarking.com/gallery/image.aspx?f=1&guid=adf08d56-0c2f-4819-b2dd-92266993a02f>
- https://www2.cambridgema.gov/cac_5_4_2009/public_progress_1.html
- City of Cambridge, Cambridge Arts Council
- City of Cambridge, Cambridge Arts Council
- https://www.cambridgema.gov/-/media/Images/artscouncil/publicartwebsite/2021publicartmap/CAC_99_10_5_Ukeles.JPG
- City of Cambridge, Cambridge Arts Council
- <http://www.edlevineartist.com/works/floatingstones/>
- <https://moniqueaimee.com/brine-tank-mural>

SITE DESIGN CONSIDERATIONS – PUBLIC ART

Public art program to remain and be strengthened.



7
Sensory Hilltop

Artist: Mitch Ryerson
Year: 2021
Material: Black Locust, Ipe, Accoya, Stone, and Copper



1
A collection of 12 artworks by Dominic Killiany installed as part of the Louis A. Despasquale Playground

Year: 2021
Original Artwork Year: 2013-2015
Material: Color pigments printed onto aluminum panel and shade sail



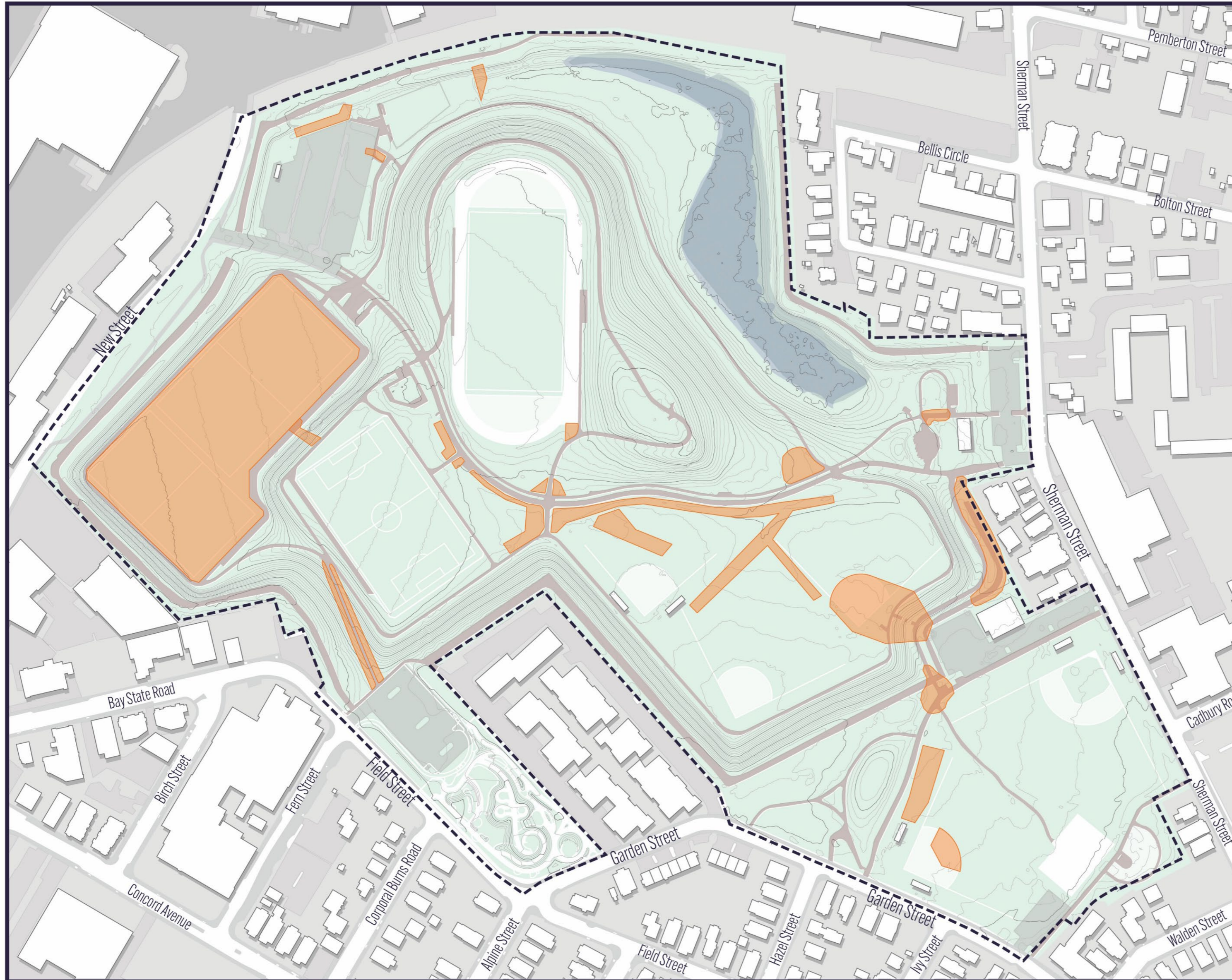
8
Pipe Dreams

Artist: NuVu Studio
Year: 2021
Material: Accoya Wood



- Image Sources:**
1. www.dominiccreations.com/
 2. Weston & Sampson Archives.
 3. www.dominiccreations.com/
 4. www.dominiccreations.com/
 5. Weston & Sampson Archives.
 6. www.dominiccreations.com/
 7. Cambridge Arts Council Facebook Page.
 8. Cambridge Arts Council Facebook Page.

OVERALL SITE NEEDS - DRAINAGE



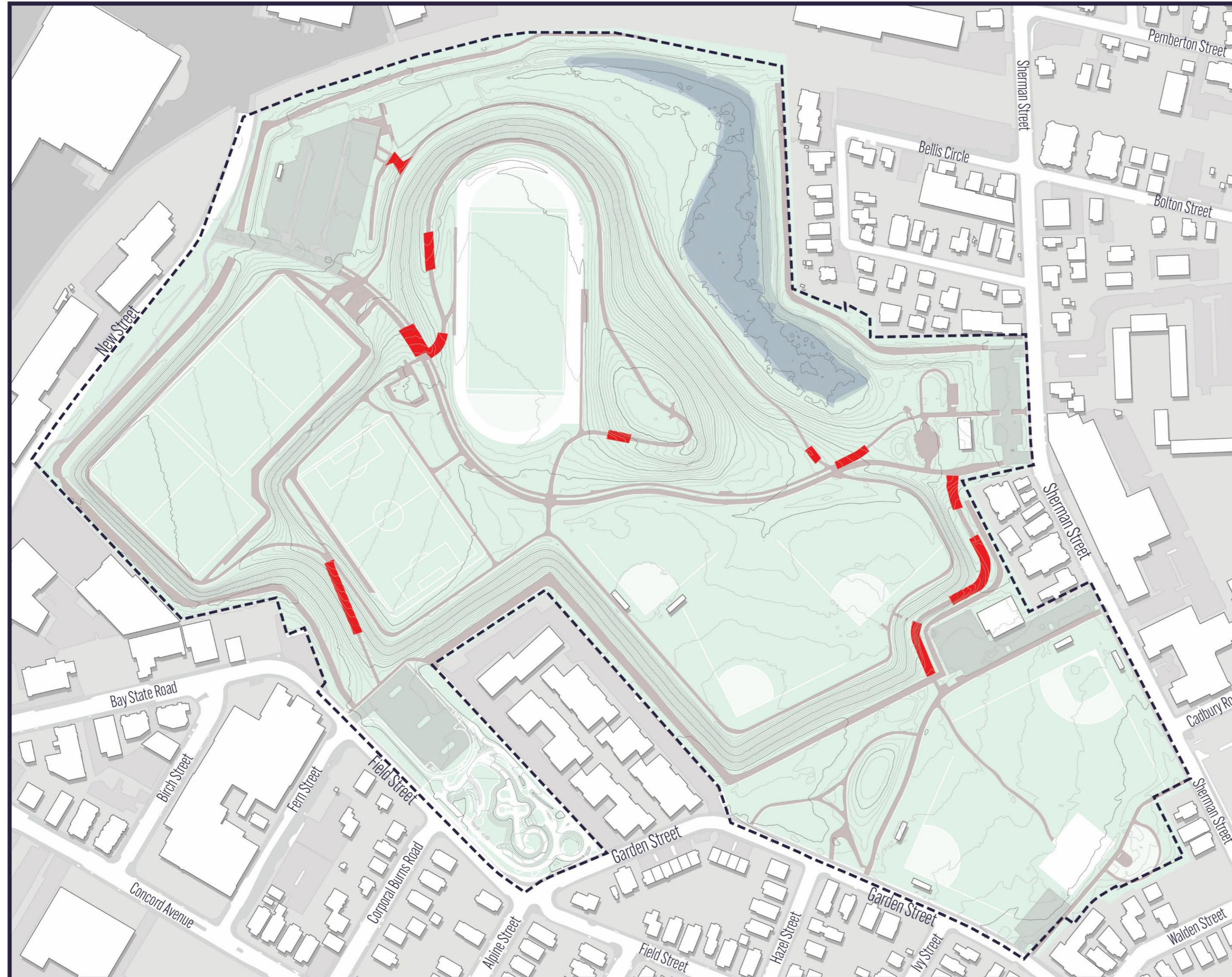
LEGEND:



Drainage Issues



OVERALL SITE NEEDS – ACCESSIBILITY



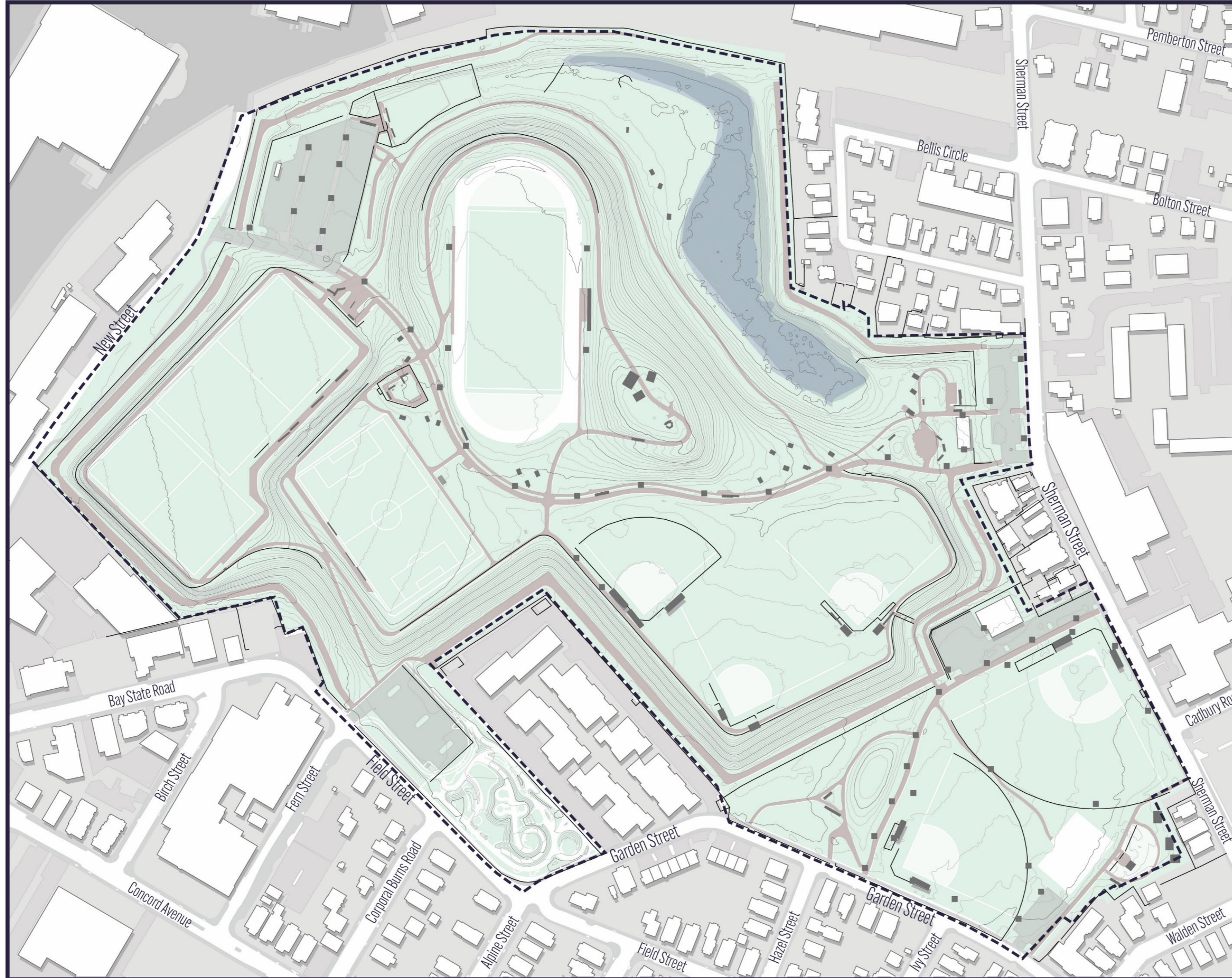
LEGEND:



In-accessible path
(ada/maab)



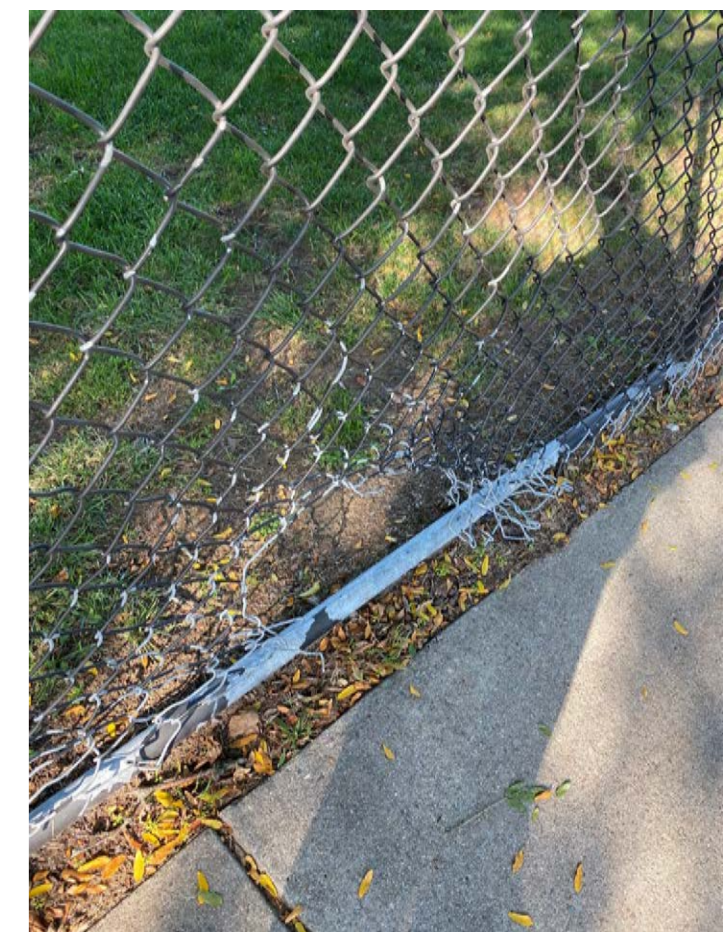
OVERALL SITE NEEDS – PARK OVERALL



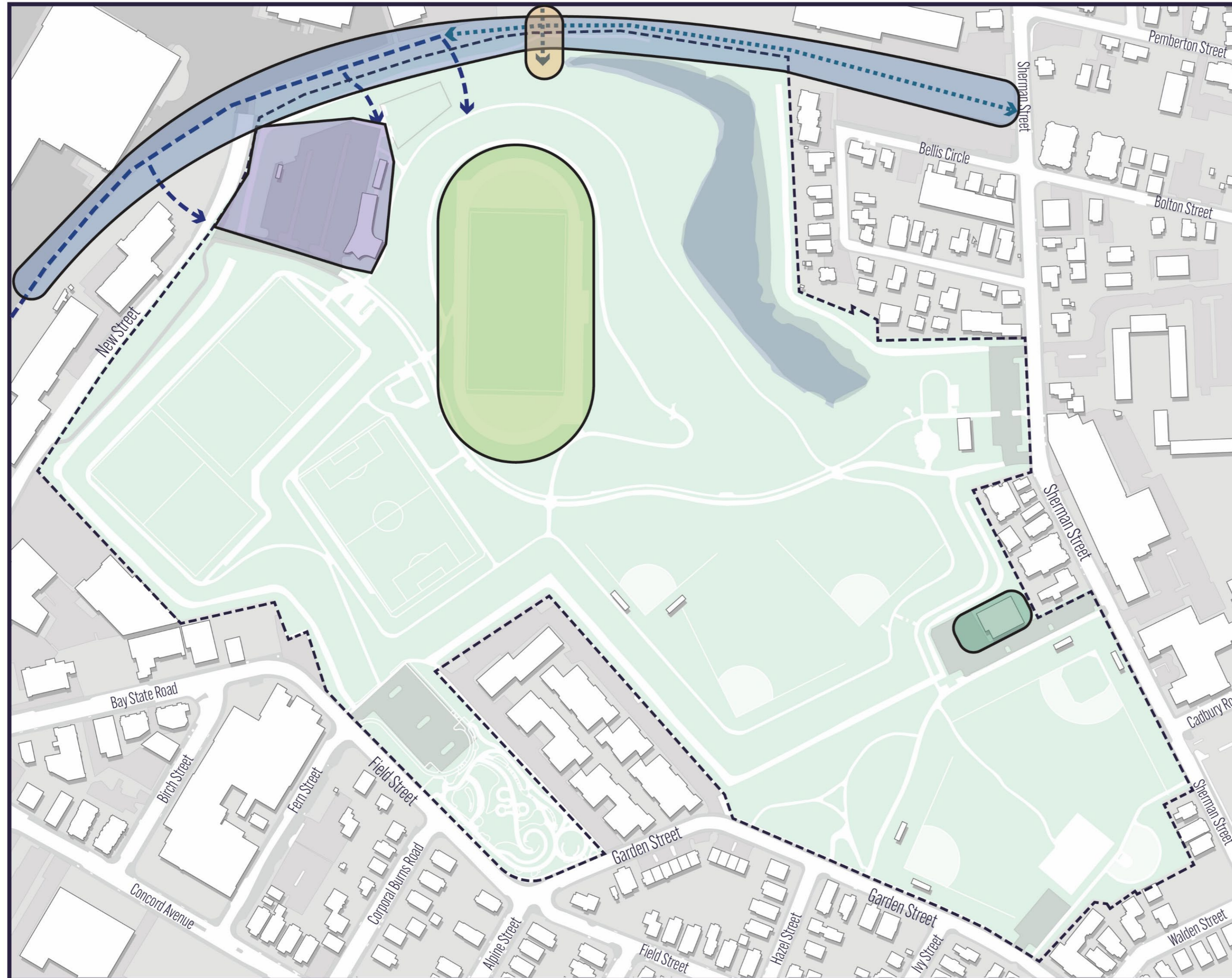
LEGEND:








PARK AMENITIES



PROJECT CURRENTLY UNDERWAY



LEGEND:

-  Track and turf field replacement
-  Pavilion building and parking lot
-  Salt shed improvements.
-  Danehy/New street multiuse path
-  Pedestrian/Bike bridge over the Fitchburg line tracks



<https://www.cambridgema.gov/Departments/PublicWorks/CityProjects/2023/DanehyGatewayPavilionProject>

PROJECT CURRENTLY UNDERWAY

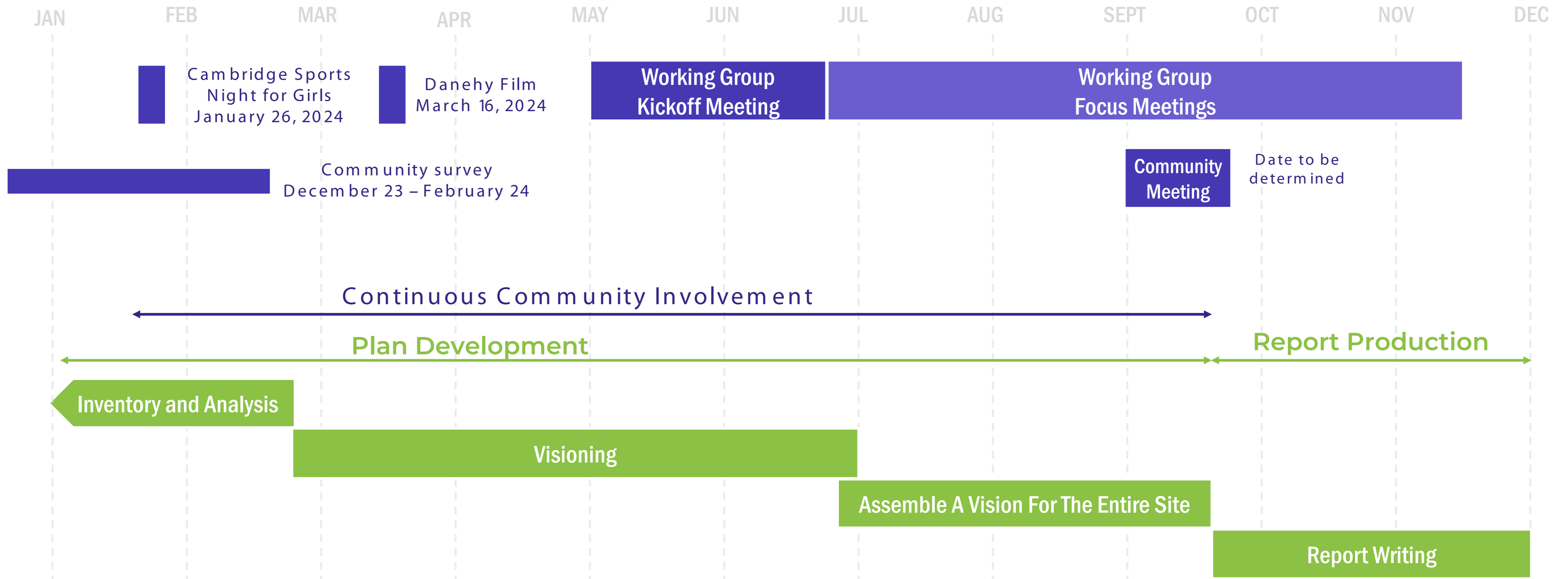
For more information, refer to the City websites listed below:

- Track and turf field replacement.
- Pavilion building and parking lot:
<https://www.cambridgema.gov/Departments/PublicWorks/CityProjects/2023/DanehyGatewayPavilionProject>
- Salt shed improvements.
- Danehy/New street multiuse path:
<https://www.cambridgema.gov/Departments/communitydevelopment/danehyParkconnector>
- Pedestrian/Bike bridge over the Fitchburg line tracks:
<https://www.cambridgema.gov/Departments/communitydevelopment/fitchburgcommuterrailincrossingstudy>

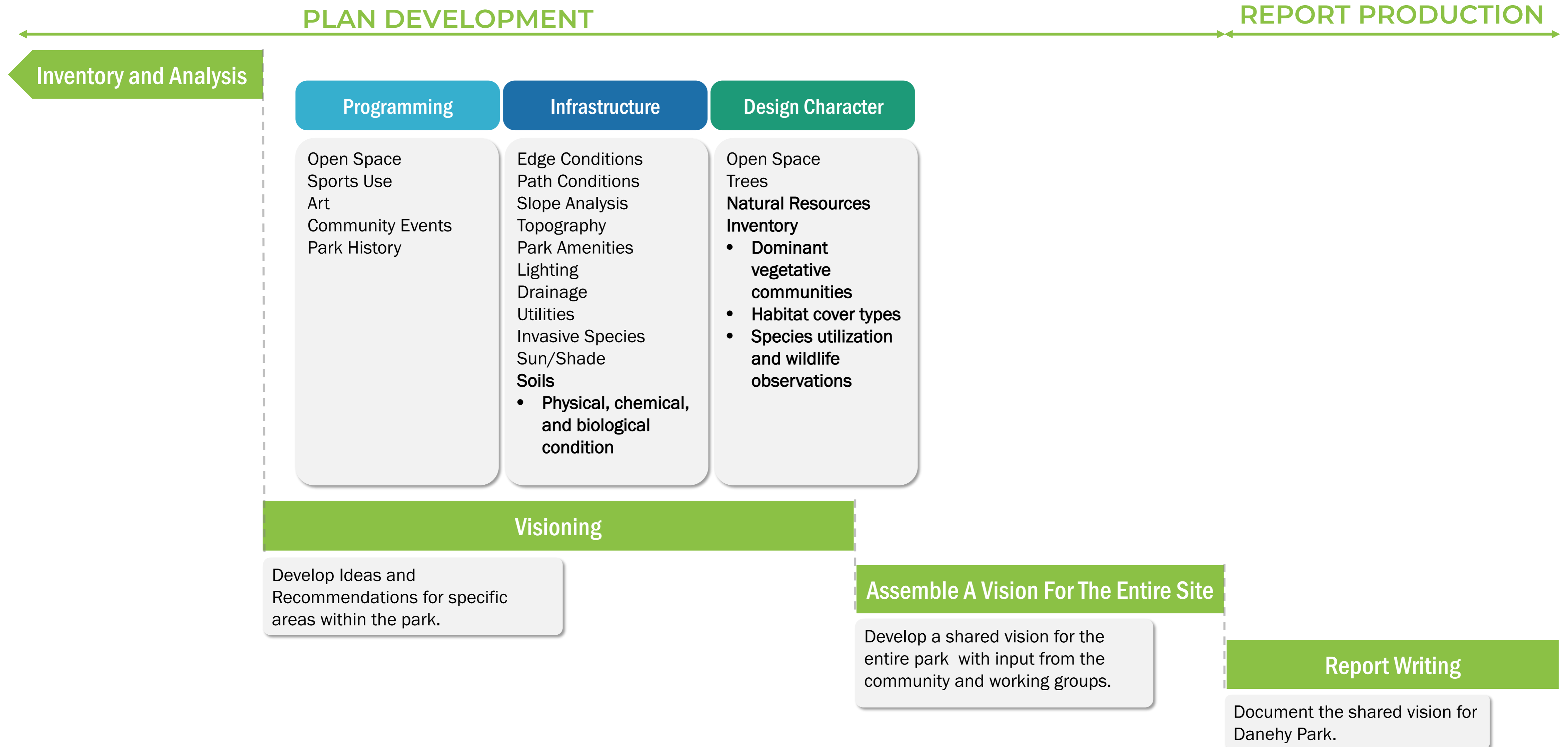
COMMUNITY INVOLVEMENT



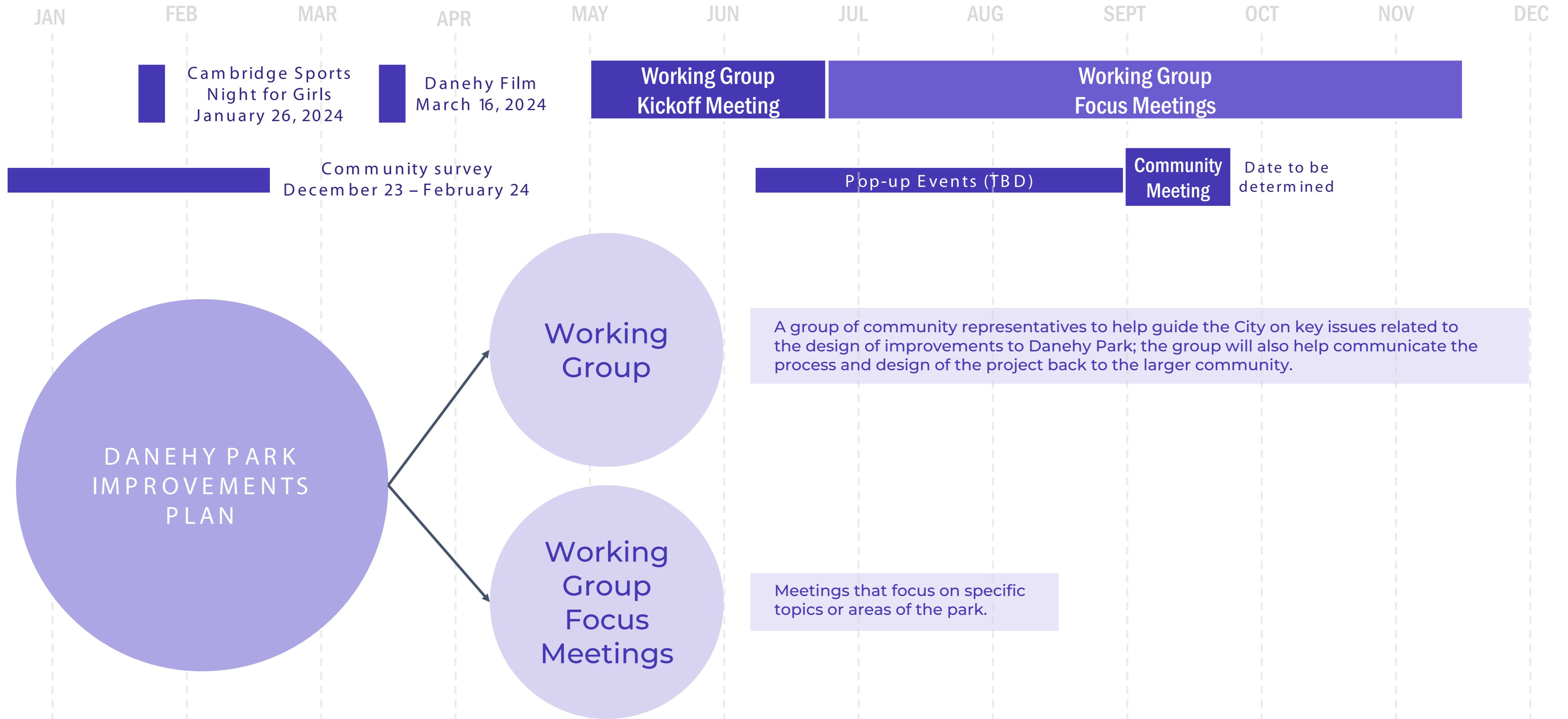
PROJECT SCHEDULE



PROJECT SCHEDULE – PLAN DEVELOPMENT



PROJECT SCHEDULE – COMMUNITY ENGAGEMENT



WHAT WE'VE HEARD SO FAR – ONLINE SURVEY

 **955** Online Survey Responses

9 Languages Survey open from December 2023 - February 2024

What people like the most about Danehy Park

-  Open space and access to nature
-  Organized and pick-up sports
-  Walking/biking paths
-  Connecting with community members
-  Size and location
-  The diversity of spaces and users

What people want added or improved in Danehy Park

-  Upgrading sports and play infrastructure
-  Adding an indoor sports/community center
-  More trees, natural areas, and seating
-  More permanent bathrooms and water fountains
-  Improved lighting
-  Improved drainage
-  Improved signage
-  More events and gathering spaces

68% of survey respondents live in North Cambridge, Neighborhood Nine, or West Cambridge

47% of survey respondents are between the ages of 35 and 54

"I love that the community comes together for Soccer Saturdays!"

"Danehy Park is an accessible outdoor space with multiple uses for my family: playgrounds, fields, and water features."

WHAT WE'VE HEARD SO FAR – IN PERSON ENGAGEMENT

Cambridge Sports Night for Girls – January 2024
Open Space Film Showing – March 2024

“Plant trees in the dog park and put in a dog friendly surface”

“It is great as is”

“More native plantings”

“re-wild portions of the park”

“Add a parkour park”

“There seem to be drainage issues”

“Add benches and/or places for spectators in inclement weather.”

“improve the track”

“would be awesome to not sled into the reeds”

“take better care of the walk that hugs the fence”

“More signage to show a map of the paths and the distance of each”



PROJECT THEMES



CREATE HIGH QUALITY SOCIAL SPACES



SPACE FOR CASUAL PLAY



SPORTS AND ORGANIZED PLAY



OPEN PLAY



MITIGATE HEAT ISLAND

ENHANCE ECOLOGY



PRELIMINARY PROJECT THEMES

WHAT ARE WE MISSING?

CREATE HIGH
QUALITY SOCIAL
SPACES

SPORTS

ENTRANCES AND
CIRCULATION

NATURAL
CHARACTER

PROVIDE BETTER
DRAINAGE

ARTISTRY AND
WHIMSY

PLAYGROUNDS
(OPEN/CASUAL/
ORGANIZED PLAY)

ENHANCE ECOLOGY

MITIGATE HEAT
ISLAND



How You Can Help!

1

Share your ideas tonight:
What is your vision for Danehy Park?
Where do you think improvements
can be made?

2

Share your input on what voices
should be brought into focus group
conversations?

3

Spread the word about upcoming
community events!