



2024 Landscape Report Fresh Pond Golf Course

A photograph of a golf course at sunset. The sun is low on the horizon, casting a warm orange and yellow glow across the sky and the trees in the background. The sky is filled with soft, wispy clouds. In the foreground, a large, well-maintained green is visible, with a flag on a pole to the right. The text is overlaid in the center of the image.

Welcome Jo-Anna
2023 Usage
Soil Program
Trees
Path Improvement

Welcome
Jo-Anna Krupa




Lead Assistant Golf Professional at
Belmont

Lead Assistant Golf Professional at
Charles River Country Club

NEPGA Assistant in the Year, Teacher of
the Year, and Professional Development
Awardee

Edinburgh College of Art MSc in Golf
Course Architecture, Edinburgh
Scotland.

Owner of a lovely dog named Ace



In 2023 over **50,000** rounds
of golf were played at the Fresh Pond Golf
Course.

Which is more than average for the area. . .

Belmont Country Club (Belmont) 15,000 rounds
Charles River (Newton) 32,000 rounds
Franklin Park (Boston) 50,000 rounds
Vineyard Club (Martha's Vineyard) 12,000 rounds
George Wright (Boston) 50,000 rounds
Robert T. Lynch (Brookline) 32,000 rounds

A photograph of a golf course at sunset. The sky is a mix of purple, blue, and orange. In the foreground, there's a green with a white flag on a pole. The background shows trees and a building. The text is overlaid on a semi-transparent white box.

In addition to daily rounds by visitors and season pass holders, Fresh Pond also accommodates:

- Youth Programs
- MSYEP Participants
- Women's Leagues
- Jr. PGA Golf Program
- Learn to Golf Program
 - High School Teams
- Veteran's Golf Program
 - Off Season Use
- Charity Tournaments
 - Wildlife

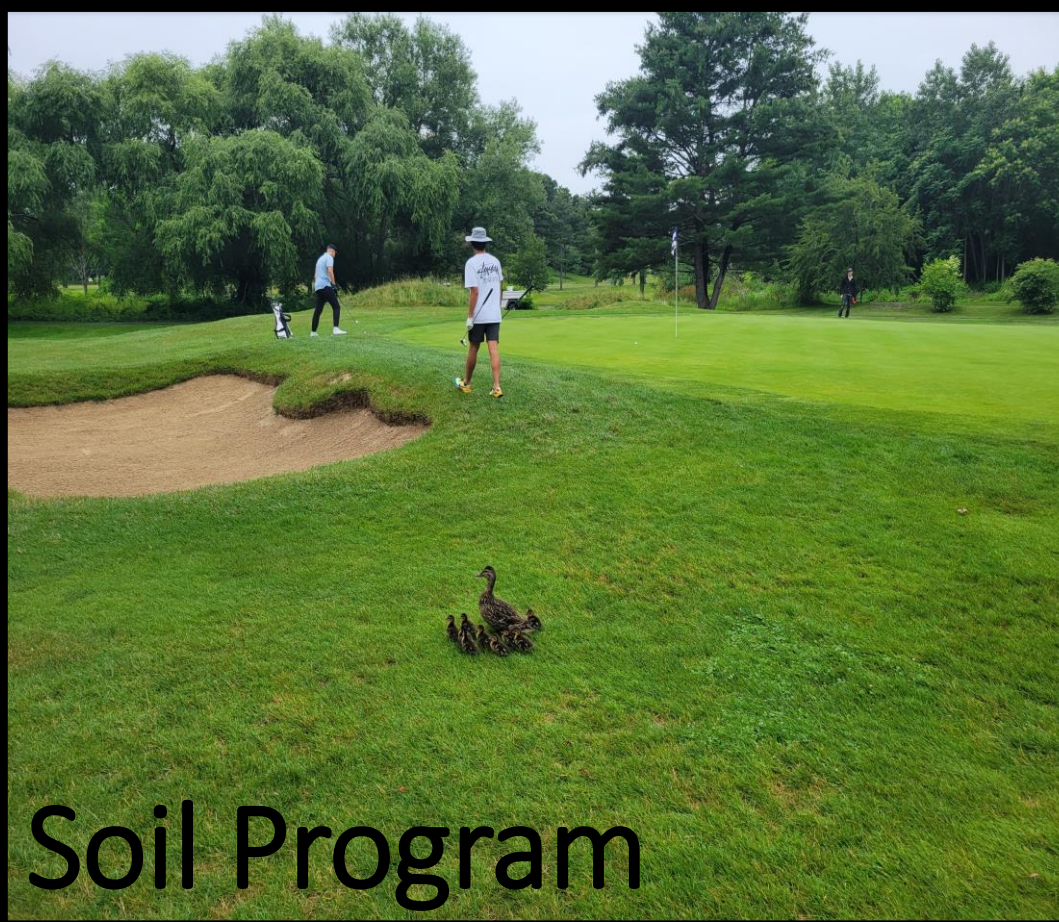
Golf, as a sport, impacts how we care for the course.

Like other Sports and Playing Fields. . .

- Golf requires a variety of consistent playing surfaces.
- Consistent playing surfaces need to be maintained to hold up through a multitude of weather conditions in spring, summer and fall.

Unlike other Sports and Playing Fields. . .

- Golf is a pivot sport that involves players striking through the turf and causing damage on most shots.
- Fresh Pond, the only site to play golf in the city, needs to be maintained to accommodate all levels of play.
 - Invasives, pests, and root depth deeply impact play
- More than 11 acres of turf at fresh pond need be cut lower than 3" for play.



Soil Program

To properly maintain the golf course our goal is to build the soil biology to:

- Promote Environmental Health
- Maintain a Dense Turf Stand
 - Outgrow Disease
- Maintain Course Playability

Our staff go about achieving our goals through:

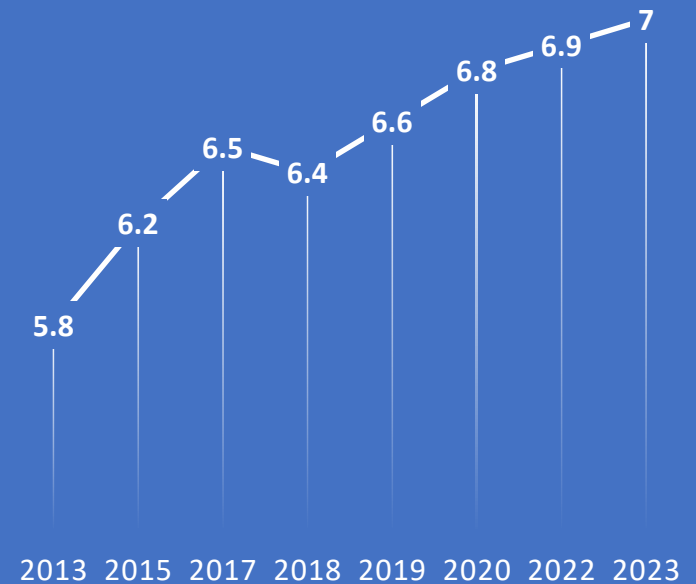
- Nutrition
- Cultural Practices
- Approved Applications
- Collaboration, Standards, and Tools

Nutrition

Soil nutrition is a keystone of our maintenance practices. The following illustrates how we currently feed our turf. This has enhanced the growing conditions on the course, including on the 9th green where we've been able to increase the PH from 5.8 in 2013 to 7.0 in 2023

- 17 essential nutrients for turf growth
- Macronutrients – N,P,K,C,H,O,Ca,Mg,S
- Micronutrients – Fe,Mn,Zn,B,Mo,Cu,Cl,Ni
- Soil testing
- MA State fertilizer guidelines
- SeaBlend fertilizer
- Building soil biology
- Outgrow of disease

SOIL PH 9 GREEN



Cultural Practices

The best way to limit applications & inputs is a solid overseeding program

- Aerating
- Topdressing
- Overseeding new grass types
- Higher heights of cut
- Closed course Monday mornings
- Deep and infrequent irrigation
- Scouting



An aerial photograph of a golf course. In the top left, a body of water is visible. The course is surrounded by dense green trees. A path or fairway winds through the landscape. The overall scene is lush and green.

We are expanding our program on putting greens to include soil testing and nutrition on fairways and tee boxes.

This spring we retained the services of Pine and Swallow to review our methods, materials, and soil sample results.

Highlights....

- Core sampling on all putting greens, tee box complexes, fairways (spring & fall).
- We took 10 soil cores at a 4” depth from problem areas throughout the course.
- Results are being reviewed by City staff and Pine and Swallow and will be used to inform how we continue to build the soil profile.
- We will continue to review our methods and materials throughout the season and use Cornell’s Environmental Impact Quotient (EIQ) to ensure we are using sound methods for care.

Winter wind was not kind to some of our mature trees. Several were lost on the course and abutting properties.



Trees



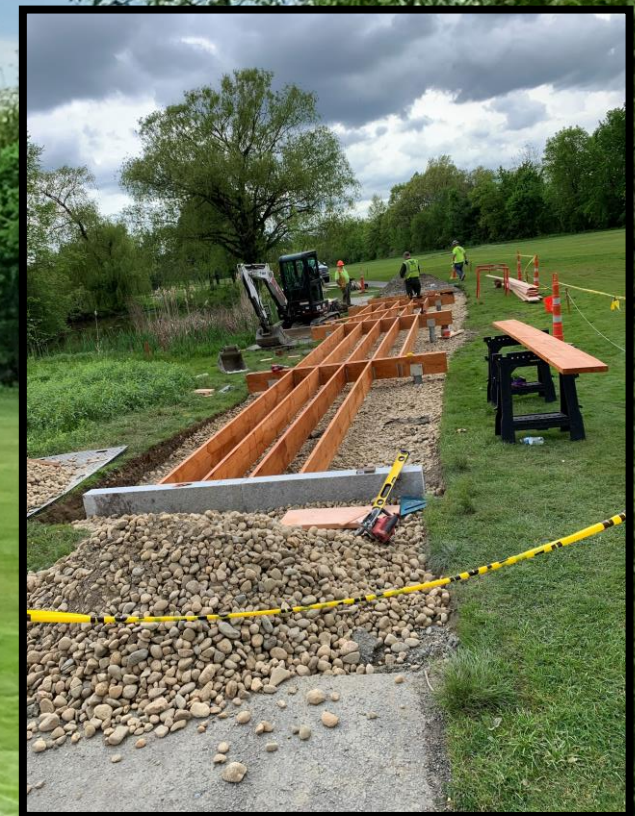
- Carya cordiformis ●
- Carya ovata ●
- Ostrya virginiana ●
- Acer rubrum ●

Little Fresh Pond Dog Beach

Fresh Pond Golf Course

We intend to plant 20 new trees behind the 2nd green. With mor to follow...

Trees



The new bridge between the 1st and 9th Fairway will improve accessibility, especially during the off-season.



Questions ?

