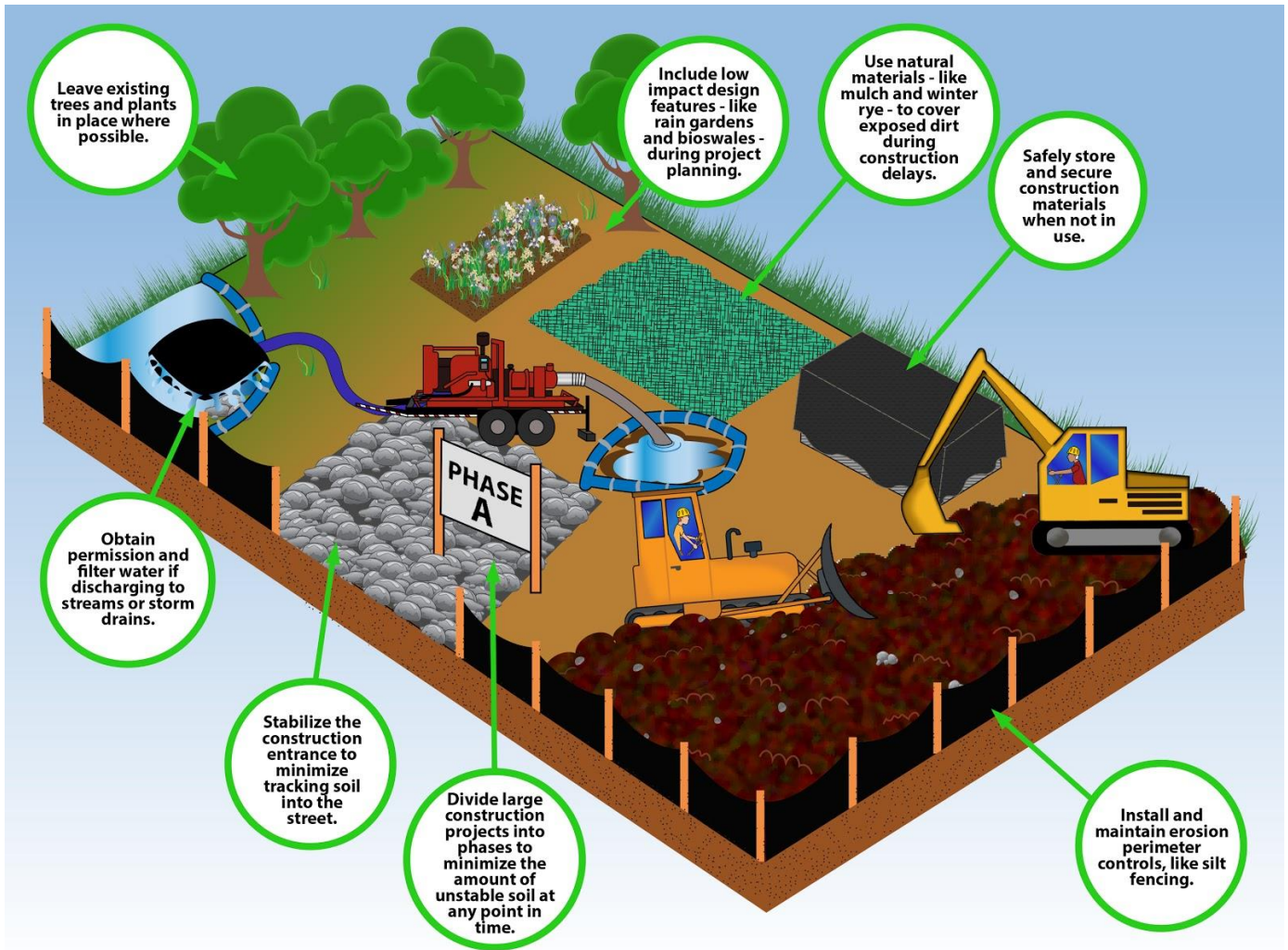




Plan Ahead to Prevent Pollution: Tips to Reduce Stormwater Runoff During Construction



Contact EPA and Cambridge DPW to make sure you have the proper permits before beginning construction.

Find our more at www.cambridgema.gov/Departments/publicworks/Services/engineeringservices



Construction companies can do their part to keep Massachusetts' waterways clean.

Find more tips like these at www.ThinkBlueMassachusetts.org.

