



**Elizabeth Unger**  
Purchasing Agent

# City of Cambridge

PURCHASING DEPARTMENT

**SHUO WANG**  
Assistant Purchasing Agent for  
Goods & Services

**NATALIE SULLIVAN**  
Assistant Purchasing Agent for  
Design & Construction

**TO: All Bidders**

**FROM: City of Cambridge**

**DATE: July 09, 2024**

**RE: File No. 11606 – 689 Massachusetts Avenue Limited Renovations- Addendum No. 3**

---

**This addendum is comprised of the following:**

- 1. Filed Sub bid tab sheet (attached)**
- 2. Questions and Answers**

**The following questions were asked and answered:**

**Question 1: Addendum #2 Question 4 confirms that the painting owns removal of vinyl sign graphics. Please confirm that painting filed sub bid scope also includes New Vinyl Wall Graphic.**

**Response: New Vinyl Wall Graphics should be carried by the General Contractor. The painting filed sub bid does not include this scope.**

**Question 2: Specifications for the Vinyl Wall graphic were not provided with the project manual. Please provide Vinyl Wall Graphic Specification Section.**

**Response: Signage specification is attached.**

**Question 3: Could you please provide specifications for Div 8 Section Window Type 106" x 52" on Sheet A6.0. It appears that it is missing.**

**Response: Specifications for window type 106" x 52" on sheet A6.0 below:**

**Basis of Design :**

**CRL Custom Powder Coated DW Series Manual Deluxe Sliding Service Window  
XOX without Screen**

- Product Number: DW5000P**
- Panel Designation: XOX (O = Fixed, X = Sliding)**
- 106"W x 52"H**
- Glazing ¼"-1/2" Laminated**
- RAL Powder Coated**





**Elizabeth Unger**  
Purchasing Agent

# City of Cambridge

## PURCHASING DEPARTMENT

**SHUO WANG**  
Assistant Purchasing Agent for  
Goods & Services

**NATALIE SULLIVAN**  
Assistant Purchasing Agent for  
Design & Construction

- **2 panel sliders with fixed center panel**
- **Provide with Keyed Lock and laminated shelf**

**All other details remain the same.**

**Elizabeth Unger**  
Purchasing Agent

**Addendum No. 3**



**00011606 - 689 Massachusetts Avenue LIMITED RENOVATIONS 07/11/2024****PAINTING**

Name of Bidder	Base Value	Alt No. 1	Alt No. 2	Alt No. 3	Alt No. 4
Top Quality Painting Company 235 Granite Street Quincy, MA 02169 Addendums: Comments:	\$19,000.00	\$0.00	\$0.00	\$0.00	\$0.00
New Chapter Home Improvement, LLC 168 River Street Cambridge, ma 02139 Addendums: Comments:	\$38,886.00	\$0.00	\$0.00	\$0.00	\$0.00
Select Paint and Finishes LLC 40Lowell Rd, Suite 2 Salem, NH 03079 Addendums: Comments:	\$48,200.00	\$0.00	\$0.00	\$0.00	\$0.00
G.V.W. Inc. 38 Bennett Street Lynn, Ma 01905 Addendums: Comments:	\$62,750.00	\$0.00	\$0.00	\$0.00	\$0.00
			Restricted To: G.V.W. Inc		
Keltic Painting LLC 189 Hill Road Thompson, CT 06277 Addendums: Comments:	\$69,700.00	\$0.00	\$0.00	\$0.00	\$0.00

**00011606 - 689 Massachusetts Avenue LIMITED RENOVATIONS 07/11/2024**

**HVAC**

Name of Bidder	Base Value	Alt No. 1	Alt No. 2	Alt No. 3	Alt No. 4
Davison Company, Inc. 90 Clarendon Avenue Somerville, MA 02144 Addendums: Comments:	\$636,600.00	\$0.00	\$0.00	\$0.00	\$0.00

**00011606 - 689 Massachusetts Avenue LIMITED RENOVATIONS 07/11/2024**

**ELECTRICAL WORK**

Name of Bidder	Base Value	Alt No. 1	Alt No. 2	Alt No. 3	Alt No. 4
Brothers Electrical Corporation 18 Graf Road Unit 31 Newburyport, MA 01950 Addendums: Comments:	\$304,000.00	\$0.00	\$0.00	\$0.00	\$0.00
Except: Boston Building and Bridge					
Hub Electric 10 Draper St Unit 19 Woburn, MA 01801 Addendums: Comments:	\$320,335.00	\$0.00	\$0.00	\$0.00	\$0.00

SECTION 101400

SIGNAGE

PART 1 - GENERAL

1.1 GENERAL PROVISIONS

- A. Attention is directed to the CONTRACT AND GENERAL CONDITIONS and all Sections within DIVISION 01 - GENERAL REQUIREMENTS which are hereby made a part of this Section of the Specifications.

1.2 DESCRIPTION OF WORK

- A. Work Included: Provide labor, materials and equipment necessary to complete the work of this Section, including but not limited to the following:

1. Code-required interior panel signage, including but not limited to, accessibility signage, toilet room signage and mechanical and electrical room signage.
2. Wayfinding signage.
3. Custom interior signage.
4. Signage above fire extinguishers.

- B. Sustainable Design Intent: Comply with project requirements intended to achieve sustainable design, measured and documented according to the LEED Green Building Rating System, of the US Green Building Council. Refer to Section 018110, SUSTAINABLE DESIGN REQUIREMENTS for certification level and certification requirements.

- C. Related Work: The following items are not included in this Section and are specified under the designated Sections:

1. Division 26 - ELECTRICAL for illuminated exit signs.

1.3 SUBMITTALS

- A. Product Data: Include construction details, material descriptions, dimensions of individual components and profiles, and finishes for each type of sign.

- B. Shop Drawings: Include plans and elevations of typical members and other components. Show mounting methods, grounds, mounting heights, layout, spacing, reinforcement, accessories, and installation details.

1. Provide message list for each sign, including large-scale details of wording, lettering, artwork, and braille layout.

- C. Samples for Verification: For each type of sign, include the following Samples to verify color selected:

1. Wayfinding/Specialty Signage : 12"x12"
2. Panel Signs: Full-size Samples of each type of sign required.
3. Approved samples will not be returned for installation into Project.

D. Maintenance Data: For signage cleaning and maintenance requirements to include in maintenance manuals.

#### 1.4 QUALITY ASSURANCE

- A. Source Limitations: Obtain each sign type through one source from a single manufacturer.
- B. Regulatory Requirements: Comply with the Massachusetts Architectural Access Board, Americans with Disabilities Act (ADA) and with code provisions as adopted by authorities having jurisdiction.

#### 1.5 PROJECT CONDITIONS

- A. Field Measurements: Where sizes of signs are determined by dimensions of surfaces on which they are installed, verify dimensions by field measurement before fabrication and indicate measurements on Shop Drawings.

#### 1.6 COORDINATION

- A. For signs supported by or anchored to permanent construction, advise installers of anchorage devices about specific requirements for placement of anchorage devices and similar items to be used for attaching signs.

### PART 2 - PRODUCTS

#### 2.1 PANEL SIGNS

- A. Preferred Fabricators:
  1. MetroSign, Tewksbury, MA.
  2. Whitney Veigas, Needham, MA.
  3. ARTFx, Bloomfield, CT.
- B. General: Provide signs that comply with requirements indicated for materials, thicknesses, finishes, colors, designs, shapes, sizes, and details of construction as indicated. Produce smooth panel sign surfaces constructed to remain flat under installed conditions within tolerance of plus or minus 1/16 inch measured diagonally. Provide the following:
  1. Panel signs:
    - a. Type: Photopolymer on acrylic or printed acrylic
    - b. Color Backing: White
    - c. Type Color : Black
    - d. Type Size: To be coordinated with City standards
    - e. Typeface: To be coordinated with City standards
  2. Specialty Signs: As indicated on drawings

- a. 3M Scotchcal ElectroCut Graphic Film
  - b. Type: 2-mil cast vinyl opaque film designed for electronic cutting, screen printing, and thermal transfer printing applications
  - c. Color Backing: Opaque
  - d. Adhesive Type: Solvent Acrylic, Pressure-sensitive
  - e. Type Color : To be coordinated with City standards
  - f. Type Size: To be coordinated with City standards
  - g. Typeface: To be coordinated with City standards
  - h. Class A rating per ASTM E-84
- C. Tactile and Braille Copy: Manufacturer's standard process for producing copy complying with ADA Accessibility Guidelines and ICC/ANSI A117.1. Text shall be accompanied by Grade 2 braille. Produce precisely formed characters with square cut edges free from burrs and cut marks.
- 1. Raised-Copy Thickness: Not less than 1/32 inch
- D. Symbols of Accessibility: Provide 6-inch- high symbol fabricated from opaque nonreflective vinyl film, 0.0035-inch nominal thickness, with pressure-sensitive adhesive backing suitable for both exterior and interior applications.
- E. Designer will provide vector files for use of fabricator. Fabricator shall provide final layout of all room and directional signs.

## 2.2 ACCESSORIES

- A. Mounting Methods: Use double-sided vinyl tape fabricated from materials that are not corrosive to sign material and mounting surface.
- B. Anchors and Inserts: Provide nonferrous-metal or hot-dip galvanized anchors and inserts for exterior installations and elsewhere as required for corrosion resistance. Use toothed steel or lead expansion-bolt devices for drilled-in-place anchors. Furnish inserts, as required, to be set into concrete or masonry work.

## PART 3 - EXECUTION

### 3.1 EXAMINATION

- A. Examine substrates, areas, and conditions, with Installer present, for compliance with requirements for installation tolerances and other conditions affecting performance of work.
- B. Verify that items provided under other sections of Work are sized and located to accommodate signs.
- C. Examine supporting members to ensure that surfaces are at elevations indicated or required to comply with authorities having jurisdiction and are free from dirt and other deleterious matter.
- D. Proceed with installation only after unsatisfactory conditions have been corrected.

### 3.2 INSTALLATION



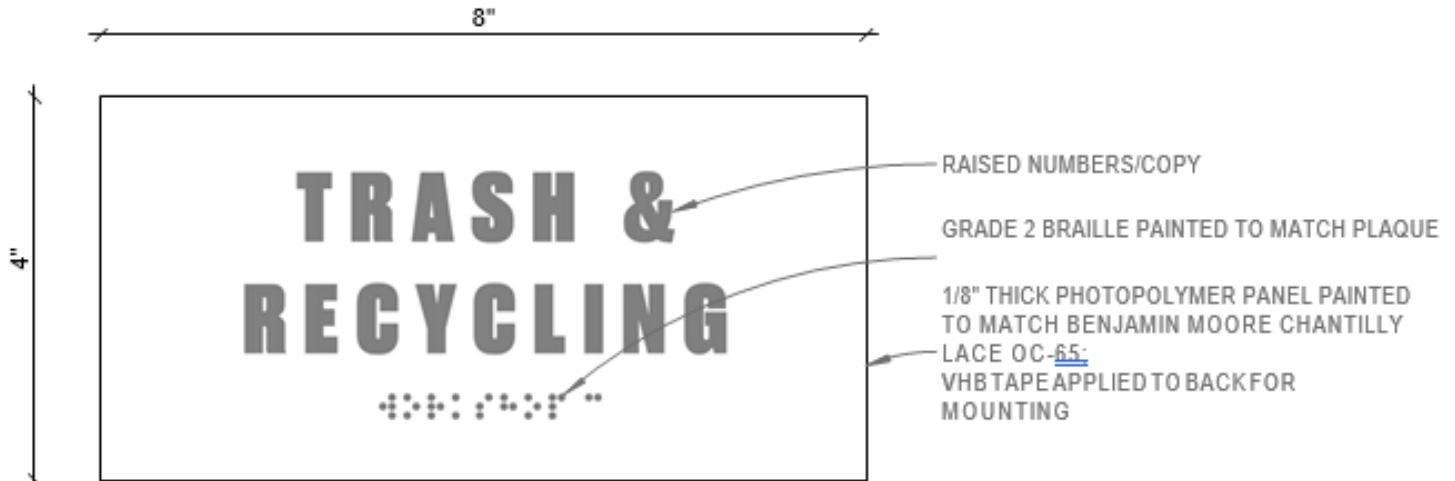
- A. General: Locate signs and accessories where indicated, using mounting methods of types described and in compliance with manufacturer's written instructions.
  - 1. Install signs level, plumb, and at heights indicated, with sign surfaces free from distortion and other defects in appearance.
  - 2. Interior Wall Signs: Install signs on walls adjacent to latch side of door where applicable. Where not indicated or possible, such as double doors, install signs on nearest adjacent walls. Locate to allow approach within 3 inches of sign without encountering protruding objects or standing within swing of door.
  
- B. Wall-Mounted Panel Signs: Attach panel signs to wall surfaces using methods indicated below:
  - 1. Vinyl-Tape Mounting: Use double-sided foam tape to mount signs to smooth, nonporous surfaces. Do not use this method for vinyl-covered or rough surfaces.

### 3.3 CLEANING AND PROTECTION

- A. After installation, clean soiled sign surfaces according to manufacturer's written instructions. Protect signs from damage until acceptance by the Architect.

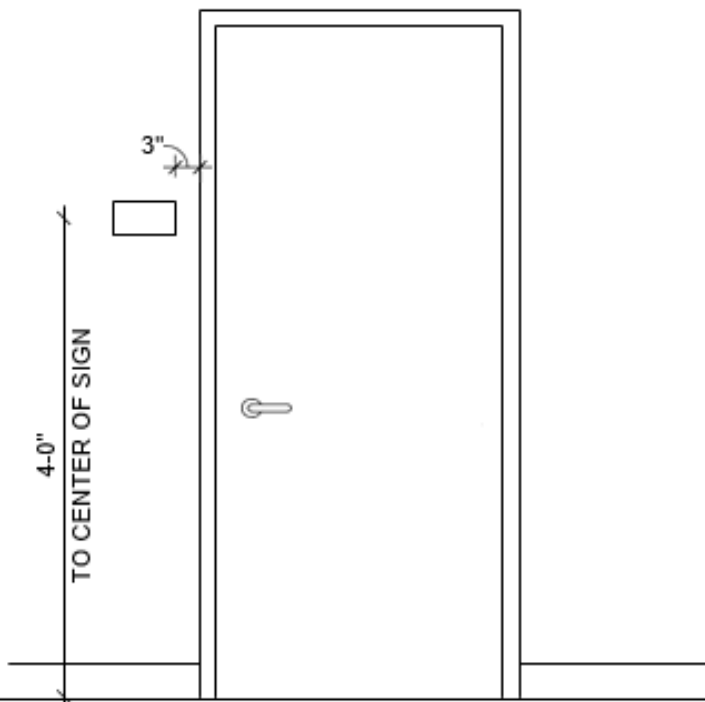
END OF SECTION

### Sign Type A - White Room Sign



Sign Type A

6" = 1'-0"



#### SIGNAGE GENERAL NOTES:

1) ARCHITECT WILL PROVIDE VECTOR-BASED DIGITAL ARTWORK TEMPLATE FOR EACH SIGN TYPE

2) FABRICATOR TO PRODUCE UNIQUE ARTWORK FOR EACH INDIVIDUAL SIGN

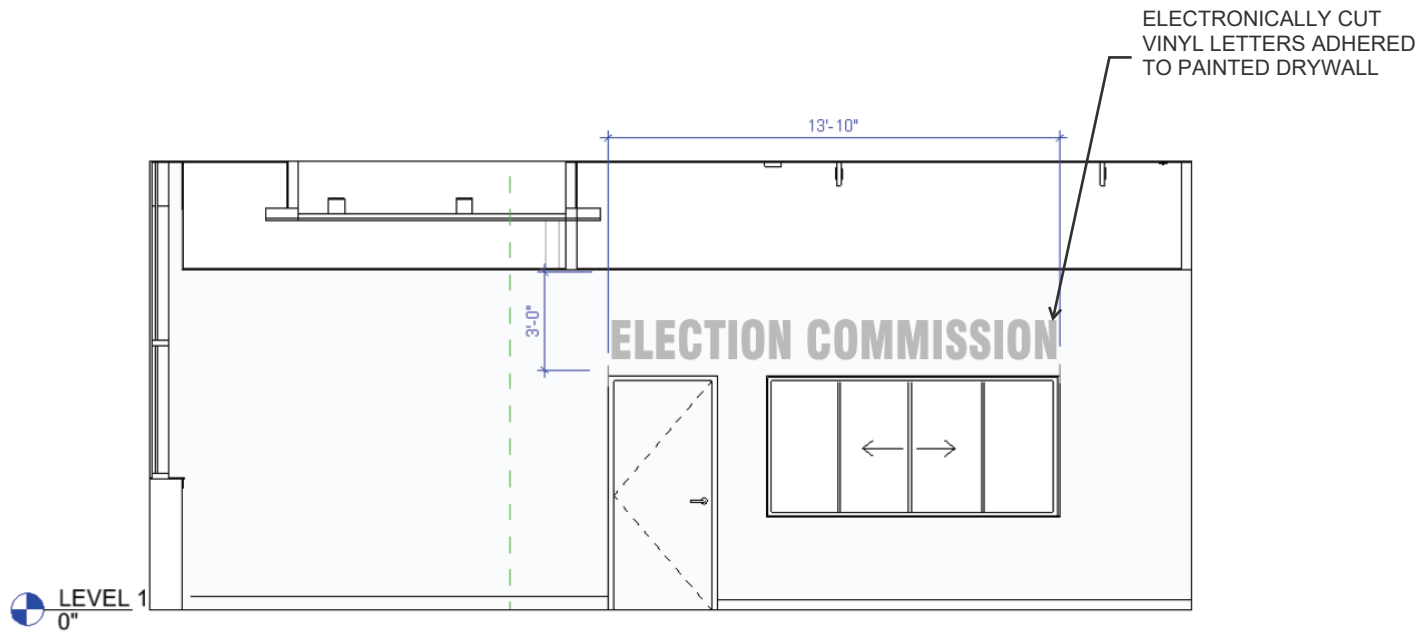
3) TO BE LOCATED AT THE FOLLOWING ROOMS:

- IDF/ELECTRICAL ROOMS
- TOILET ROOMS NOT PREVIOUSLY INSTALLED
- DEPARTMENT SIGNAGE AS REQUIRED BY CITY

Sign Type A - Location

1/2" = 1'-0"

## Sign Type B Election Commission Vinyl Wayfinding Signage



Sign Type B - Location

## List of Samples

1. Sign Type A
  - one (1) full-scale sign painted
2. Sign Type B
  - 12"x12" sample of adhesive vinyl including three (3) colors: white, red and gray