

**FREE**

# The Cambridge Life

Fall 2005 - Winter 2006

Brought to you by  
the City of Cambridge

## **FOCUS ON HOUSING**

*KEEPING CAMBRIDGE  
AFFORDABLE FOR ALL*

## **Cambridge Preschools**

*Meeting the Needs of  
Children and Families*

## **Employment for All**

*The Office of Workforce Development  
is Here to Help*

Living Healthy in Cambridge | Recycling Tips

**Plus:** Resources for Cambridge Newcomers & Residents

# MESSAGE FROM THE CITY MANAGER

On behalf of the Mayor, the City Council and the employees of the City of Cambridge, I am pleased to present residents, workers and visitors of our fine city with the fall/winter issue of *The Cambridge Life*. This biannual magazine includes regular features on City departments, programs and services, a City resource section (including a newcomers' page) and a calendar sampling of upcoming events.

In its most recent goal setting process, the Cambridge City Council continued to place a high emphasis on creating and preserving affordable housing. Learn more about some of our innovative housing initiatives, partnerships and projects on page 12.

The City Council also places a high priority on education. Find out how our City preschools help meet the needs of Cambridge children and families on page 8.

Each year, we help nearly 1,000 Cambridge residents and businesses with employment resources and programs. Learn more about these on page 10.

Adopting environmentally sound and energy efficient practices was a new goal for the City Council. Last year Cambridge residents recycled over 6,000 tons of paper and cardboard. Turn to page 4 for tips on what else we can do to Reduce, Reuse and Recycle to sustain our environment.

Cambridge works hard throughout the year to promote a safe and healthy environment for our residents. Earlier this year we launched a *Healthy Living Cambridge* initiative. Find out more on page 6.

We are very proud of what we do to foster community in Cambridge and utilize several tools to regularly communicate information to our residents. The *CityView* newsletter is mailed



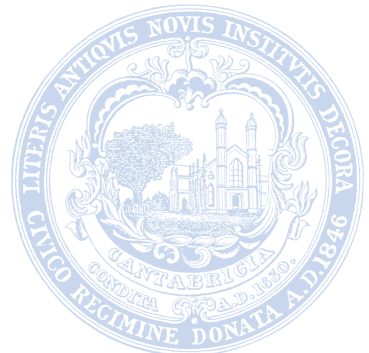
**Robert W. Healy**  
City Manager

directly to Cambridge households twice a year, in May and November. We also utilize the City's Web site at [www.cambridgema.gov](http://www.cambridgema.gov) as a key communications tool and recently launched *Cambridge E-Line*, a weekly E-mail newsletter and on-demand City information service.

We hope you find this latest issue of *The Cambridge Life* enlightening and interesting!

Sincerely,

Robert W. Healy  
City Manager



# FALL 2005 - WINTER 2006



**Cover photo:** Scouting Way: 13 affordable rental units completed by Just A Start. **This page, from top:** Produce from a local farmers' market; Enjoying the "imaginary frog pond" at the Morse Preschool; Older teens participate in the YouthWorks Summer Jobs Program; Trolley Square: 40 affordable rental and homeownership units currently under construction.

- 2 Welcome Letter**
- 3 Table of Contents**

**FEATURES**

- 4 Recycling Tips**  
Tips for recycling and waste disposal that every resident should know
- 6 Living Healthy in Cambridge**  
The 5-2-1 plan for healthy living
- 8 City Preschools**  
Meeting the needs of children and families
- 10 Employment for All**  
The Office of Workforce Development is here to help
- 12 Cambridge Housing**  
Keeping Cambridge affordable for all

**REFERENCE**

- 14 For New City Residents**  
At-a-glance info. on moving van permits, voter registration, and more
- 14 Utilities**  
Electricity/Gas, Telephone, Internet Access, Water/Sewer, Cable
- 15 Cambridge City Government**  
Contact Info. for City Hall, City Manager, City Council, and the Mayor
- 15 Useful Phone Numbers**  
City Info. Lines and Departments
- 16 Public Transportation**
- 17 Registry of Motor Vehicles**
- 18 Business Resources**
- 18 City Licenses and Taxes**
- 19 Public Works**  
Street Cleaning, Trash Collection, Recycling
- 19 Traffic, Parking, and Transportation**  
Resident Parking Permits, Snow Emergencies, Moving Van Permits
- 20 Organizational Chart**

- 21 Voter Registration**
- 21 Cambridge Political System**
- 22 Human Services**
- 22 Rights and Resources**
- 23 Community Development**
- 23 Public Safety**
- 24 Children, Youth, and Family Services**
- 25 Schools**
- 26 Health**  
Hospitals, Cambridge Health Alliance Services
- 27 Public Facilities**  
Parks & Recreation, Libraries, Post Office
- 28 Cambridge Culture**  
Arts and History, Museums, Galleries, Theaters, Dance, Music
- 29 Community Organizations**  
Services, Volunteer Opportunities
- 30-31 Cambridge Events**

**Editor**  
Ini Tomeu  
Public Information Officer,  
City of Cambridge  
itomeu@cambridgema.gov  
617.349.4339

**Publisher**  
Lucie Stites  
Inside the Box Publishing

**The Cambridge Life**  
is published for the  
**City of Cambridge**  
by Inside the Box Publishing  
lucie@itbpub.com  
617.629.0002

The Cambridge Life is a free publication published twice a year, in March and September. Inside the Box Publishing verifies the accuracy of the information provided to the best of the publisher's ability. ITB Publishing and The City of Cambridge assume no liability for loss or damage, errors or omissions. No part of this publication may be reprinted without the written permission of the publisher. © 2005 Inside the Box Publishing

# IF IT RIPS, RECYCLE IT - RECYCLING PAPER IS EASY!

In 2004, Cambridge residents recycled 6,460 tons of paper and cardboard, but threw out up to 1,500 tons more! Remember, "if it rips, recycle it." Just keep it free from food and plastic wrapping.

## BY RECYCLING 6,460 TONS OF PAPER AND CARDBOARD, WE SAVED:

- 19,380 cubic yards of landfill space
- 12,920 barrels of oil (enough for over 1,000 round trips between Cambridge and San Francisco!)
- 26,486,000 kilowatts of energy (enough to power over 500 average homes for 6 years!)
- 387,600 pounds of air pollution
- 45,220,000 gallons of water
- 109,820 trees

## CARDBOARD: IT'S NOT THAAAT HARD!

You have a few options...

- Flatten & cut to 3 feet X 3 feet
- Fold, flatten & stuff in a paper bag or a paper recycling toter on wheels
- Flatten & bring to Drop-Off Center during open hours



## Are You a Homeowner who Recycles a lot of Paper?

You may be eligible for a large recycling bin on wheels just for paper. E-mail: [rmail@cambridgema.gov](mailto:rmail@cambridgema.gov) or call 617-349-4866 to find out.



## Check Out Our Donate & Recycle Listings!

An A-Z list of materials with information on where to donate unwanted items such as furniture, building materials and electronics. Also answers your recycling questions about odd materials.



## HOUSEHOLD HAZARDOUS WASTE

Materials accepted include: adhesives, car tires (limit 4), chemicals, fluorescent bulbs, fuels, hobby & art supplies, cleaners & spot removers, car batteries, paints (oil & latex), poison & weed killers and propane tanks (20lbs or less).

The next collection is October 22 at 450 Concord Ave. For a comprehensive list of the materials accepted and not accepted, call or visit our Web site, [www.cambridgema.gov/theworks](http://www.cambridgema.gov/theworks).

## MOTOR OIL

State law requires retailers to accept and recycle it for free, so bring it back with your receipt. Oil from residential use only can also be brought to DPW during business and Drop-Off hours.

## COMPUTERS, TVS & APPLIANCES

DPW will pick up one TV or monitor per week per household on collection day with a diagonal screen length of 20 inches or less. Hard drives, keyboards, mice and printers 40 lbs or less are accepted.

For large TVs, monitors, printers and copiers, call to purchase a sticker and schedule a pickup for \$20 (\$15 for seniors). Stickers also must be purchased for appliances and bulky metal. Call or visit our Web site for a detailed list.

# what to Recycle

## CO-MINGLE CONTAINERS LOOSE IN YOUR BIN

### ALUMINUM

(PIE PLATES, FOIL,  
TRAYS)

### GLASS BOTTLES

(ANY COLOR)

### METAL CANS

(EMPTY AEROSOL  
CANS TOO!)

### PLASTIC

### CONTAINERS (#1-7)

(NO STYROFOAM OR  
PLASTIC BAGS)



## MIXED PAPER IN A BAG

### MAGAZINES & NEWSPAPERS

### JUNK MAIL & PHONEBOOKS

(NO CDs OR  
PLASTIC WRAP)

### OFFICE PAPER & ENVELOPES

(ANY COLOR. PLASTIC  
WINDOWS, STAPLES,  
PAPER CLIPS, SPIRALS OK)

### PAPERBOARD

(CEREAL & TISSUE BOXES,  
PAPER TOWEL ROLLS,  
MILK & JUICE CARTONS)

### SOFT COVER BOOKS

### CARDBOARD

(FLATTENED & CUT TO  
3 FEET X 3 FEET)

No plastic bags\*, styrofoam packaging, foam peanuts\*, hard cover books\*, toys, clothing hangers, light bulbs, paint cans, or window glass.

\* Items with asterisk accepted at Drop-Off Center at 147 Hampshire Street.  
Open Tues/Thur 4 – 7:30 p.m. and Sat 9 a.m. – 4 p.m.

## RECYCLING TIPS EVERYONE SHOULD KNOW!

### 1. PAPERBOARD IS ACCEPTED

Cereal & tissue boxes, paper towel rolls and milk & juice cartons with the plastic spout

### 2. GLOSSY PAPER AND JUNK MAIL ARE

ACCEPTED “If it rips, recycle it!” Just remove plastic wrapping. Recycle phonebooks too!

### 3. PLASTIC WINDOWS ON TISSUE BOXES OR

ENVELOPES ARE OK And, there’s no need to remove staples, paper clips, or spiral bindings!

4. **NO PLASTIC BAGS** Place co-mingled containers loose in your bin, mixed paper in a paper bag and yard waste in paper bags or labeled barrels. Bring plastic bags to the Drop-Off Center during open hours.



## Yard Waste

- Accepted: Leaves, grass & plants and shrub prunings & twigs thinner than your thumb and shorter than your arm
- Not accepted: stumps, rocks, soil, food, trash
- **NO PLASTIC BAGS.** Place in a barrel with City stickers facing the street or in paper bags. Don't staple or tape bags.

CAMBRIDGE  
DEPARTMENT  
OF PUBLIC  
**THE  
WORKS**

[www.cambridgema.gov/theworks](http://www.cambridgema.gov/theworks) 617-349-4800

Business Hours: Mon 8:30 a.m. – 8 p.m., Tues – Thur 8:30 a.m. – 5 p.m., Fri 8:30 a.m. – Noon

Recycling Drop-Off Hours: Tues & Thur 4 – 7:30 p.m. and Sat 9 a.m. – 4 p.m.

# Living Healthy in Cambridge

## THE CAMBRIDGE PUBLIC HEALTH DEPARTMENT'S 5-2-1 PLAN FOR HEALTHY LIVING

by Suzy Feinberg



**A walking group for seniors and new mothers organized by Cambridge Walks**

Cambridge is a city that works hard to promote a safe and healthy urban environment. Abundant sidewalks and bike lanes, as well as a vast public transportation system, make it easy to get around Cambridge without a car. The City offers an array of recreational activities and its

78 parks and playgrounds are well-maintained and extremely popular.

So that residents have access to affordable healthy foods, the City supports neighborhood food pantries and weekly farmers' markets. In the public schools, a team of nutritionists, nurses and physical education experts are helping kids eat better and exercise more by serving healthier (and tastier) school meals, cultivating vegetable gardens, improving P.E. classes and educating families about nutrition and healthy lifestyles.

In 2005, the Public Health Department launched *Healthy Living Cambridge*, a citywide campaign to encourage Cantabrigians to eat more fruits and vegetables, watch less television and be more physically active. These recommendations came about after nutrition experts in Cambridge waded through piles of scientific papers and national reports on the obesity epidemic. Based on this research, they came up with a simple strategy called 5-2-1:

- eat **5** or more fruits and vegetables daily
- limit screen activities (TV, computer games, home videos) to less than **2** hours daily
- get at least **1** hour of physical activity daily

For adults and kids who want to eat healthier, stay in shape and have some fun, here are some ideas from *Healthy Living Cambridge*.

### ALL IN THE FAMILY

Kids learn many of their eating and television habits from their parents. Some ideas for keeping your family healthy:

- Walk, bike, or play outdoors as a family
- Cook or garden with your children
- Stock the fridge and cupboards with healthy foods

- Give your kids low-fat milk or water instead of sugary sodas and sweetened fruit drinks
- Serve smaller portions to discourage overeating
- Don't allow a TV in your child's bedroom
- Set a schedule for watching specific TV shows as a family and turn off the set when the shows are over
- Don't allow eating or snacking in front of the TV

### TASTE OF CAMBRIDGE

Eating healthy doesn't have to dull the taste buds. If you enjoy cooking, then you should visit Central Square's natural foods markets and vibrant ethnic groceries. **Harvest Co-op Market** (581 Mass. Ave.) has an impressive selection of bulk products including teas, spices, oatmeal and 23 varieties of rice. Some healthy choices for kids: low-sugar cereals, peanut butter, applesauce and natural juices. Next door to Harvest is **Shalimar** (571 Mass. Ave.), an Indian grocery with exotic breads,



**Produce from a local farmers' market**



Walking group and golden shoe photos by Jeff Walker; Farmers' market photo by Mimi Katz.

# “BEST BROCCOLI I EVER HAD.”

- FIRST GRADER AT VEGETABLE TASTING IN THE  
PEABODY SCHOOL CAFETERIA

inexpensive spices, dried beans, coconuts, mangos and enormous sacks of flour and rice. **RR Foods Market** (121 Hampshire St.) and **El Coloso Market** (102 Columbia St.) carry Latin American favorites like fresh tortillas, plantains, yuca roots, coconuts, dried hot peppers, spices, sauces and rice. **Yoshinoya** (36 Prospect St.), a Japanese market, sells sushi-grade seafood, dried shitake mushrooms, tofu, miso and seaweed.

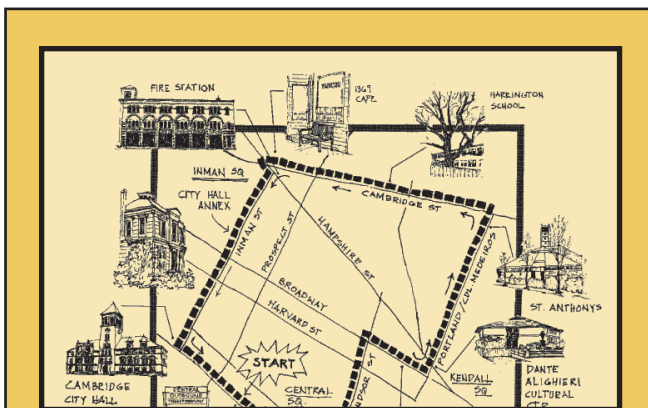


**Golden shoes in front of Cambridge City Hall**

## WALK IT!

Walking and bicycling are great ways to improve your health and reduce automobile traffic. Nearly all Cambridge streets have sidewalks and a network of bike lanes crisscross the city. To ensure the safety of pedestrians and cyclists, the City has implemented a number of measures to slow traffic and make it easier to cross busy intersections. Cambridge also enforces regulations to keep sidewalks clear of snow, ice, parked cars and vegetation.

The annual *Hunt for Golden Shoes* is a beloved rite of spring in Cambridge. Every May, 100 gold-painted shoes are placed around the city in parks, playgrounds and on walking paths. Pedestrians who find a “golden shoe” win a free pair of walking shoes. The event is part of the *Cambridge Walks* campaign, which also produces walking maps and sponsors a summer walking club for mothers and children. Visit [www.cambridgepublichealth.org](http://www.cambridgepublichealth.org) to learn more about *Cambridge Walks*. ■



**Cambridge Flavors, a pocket-sized map detailing a 2.5 mile walk planned by Cambridge Walks**

## MORE INFO

### RECREATION GUIDES

For information about Cambridge playgrounds, pools, skating rinks, sports leagues, exercise classes and other recreational activities, call 617-349-6200 or go to the City's Web site, [www.cambridgema.gov/dhsp2](http://www.cambridgema.gov/dhsp2). Also check out the 2005 edition of *Cambridge Moves*, an activity guide for children and families. For a free copy, call 617-665-3899 or visit the publications section of [www.cambridgepublichealth.org](http://www.cambridgepublichealth.org).

### FUN WALKS IN CAMBRIDGE

For pocket-sized maps of popular walks, visit [www.cambridgepublichealth.org](http://www.cambridgepublichealth.org) or call 617-665-3800.

### URBAN BICYCLE MAPS

Available at local bike shops, bookstores, and [www.bikemaps.com](http://www.bikemaps.com).

### FARMERS' MARKETS

This fall, shop for tomatoes, root vegetables, squash, greens and fresh herbs at weekly farmers' markets. For more info, call 781-893-8222 or visit [www.massfarmersmarkets.com](http://www.massfarmersmarkets.com). Recipes online: For meals and snacks your whole family will love, try <http://kid.allrecipes.com>.

### BUSES, SUBWAYS AND TRAINS

For maps and schedules, call 617-222-3200 or go to [www.mbta.com](http://www.mbta.com).

### CAR-SHARING

Rent autos by the hour from Zipcar, a Cambridge-based company with national aspirations. Call 866-494-7227 or visit [www.zipcar.com](http://www.zipcar.com).

# CITY PRESCHOOLS



## MEETING THE NEEDS OF CHILDREN AND FAMILIES

Cambridge youngsters have many opportunities for child-centered growth, learning and lots of fun! The community boasts a rich array of preschool choices, including those operated directly by the City as well as programs operated by local not-for-profit and for-profit organizations and businesses.

### A CITY TRADITION

Unusual among municipal governments, the City of Cambridge offers an excellent preschool experience to over 100 children ages 2.9-5 years. Operated by the Child Care and Family Support Services Division within the Department of Human Service Programs (DHSP), the seven preschool classrooms are conveniently located in public school buildings. The M.L. King, King Open, Morse, East Cambridge and Peabody Preschools are year-round, full-day programs, while the Haggerty Preschool offers a school-year, half-day format. Children from many backgrounds benefit from teachers with diverse heritages, as well as from student interns from area colleges and the involvement of grandparents through the national Foster Grandparents Program. All seven programs are licensed through the Massachusetts Department of Early Education and Care (formerly the Office of Child Care Services) and are accredited by the National Association for the Education of Young Children.

### CREATIVE FUN

Emergent curriculum, which builds upon the ideas and expressed interests of children, offers many opportunities for creative learning. This approach allows teachers to extend students' thinking and learning through resources and activities. Applying this education philosophy, the

East Cambridge Preschool recently hosted a "Dinosaur Lunch." Several parents joined in for circle time, songs and hands-on activities. They sang and read, "Dig a, dig a, dig a, dig a dinosaur," and prepared a dinosaur lunch – hot dogs for the meat eaters and salad for the plant eaters. Morse Preschoolers invited parents to participate in a "Pet Show" curriculum and to enjoy a movement, dancing and singing activity. Singing a rhyming song, preschoolers recently gathered around the Morse's water table which had been transformed into a home for all sorts of imaginary aquatic life. The experience provided an excellent opportunity for the children to explore animal behavior. At the King Open Preschool, the children recently staged the story of The Three Bears, sampling porridge, making their own costumes, creating biographies for the characters and acting out all of the roles.

### EARLY SKILL-BUILDING

Other programs within the preschools also help to build skills for a lifetime. A visitor might see children handling and even lying on Big Books that are sometimes larger than the children. The Literacy Connection program (offered

**They sang and read, "Dig a, dig a, dig a, dig a dinosaur," and prepared a dinosaur lunch - hot dogs for the meat eaters and salad for the plant eaters.**



through the Cambridge Public Schools and supported by Massachusetts Department of Education funds) uses such approaches to increase young children's comfort with books, developing their pre-reading and pre-writing skills. At several preschools, including the King Open, preschoolers are paired with reading buddies from kindergarten as another literacy stimulus. Inclusion initiatives throughout the system seek to make the preschools welcoming places for all children, including those with a spectrum of special needs. Another initiative, supported by staff from Suffolk University, involves a peaceful child-to-child conflict resolution program in all the preschools, fostering non-violent conflict resolution skills.

### LINKAGES TO FAMILIES

Family involvement is another important component at the preschools. In addition to parent-teacher conferences held three times a year, family events are scheduled every six weeks. These include field trips, plays, sing-alongs, potluck suppers, cookouts and

**Photos (left to right, from opposite page):** "Imaginary Frog Pond" at the Morse Preschool; "Dinosaur Lunch" at the East Cambridge Preschool; "Dancing in the Middle" at the Morse Preschool.



educational events on a variety of topics, such as developing healthy eating habits. An open door policy provides parents with opportunities to come in and present information on their own cultures to the children in a classroom; these presentations often involve food, music, dance and activities featuring the language a family speaks at home. In such a setting, it is not surprising that families often develop a long-term relationship with a preschool, sending each of their children there and enrolling them in DHSP After School Programs at the same locations as they move into elementary school.

### TUITION ASSISTANCE

Massachusetts Department of Early Education and Care subsidized slots are available in full-year preschool classes. A limited number of City-funded program scholarships and Community Partnership slots are also available (eligibility based on income and family size). The preschools accept Child Care vouchers. The Child Care Resource Center Scholarship is another source of financial support. Call 617-547-1063.

### MORE INFORMATION

To learn more about the City's preschools, please contact the Preschool Manager, Just Holm, at 617-349-6200, stop by the offices at 51 Inman Street, Cambridge, or visit the Web page at [www.cambridgema.gov/DHSP2/childcare.cfm](http://www.cambridgema.gov/DHSP2/childcare.cfm) ■

### PRESTIGIOUS ACCREDITATION

Each of the City's preschool programs is licensed through the Massachusetts Department of Early Education and Care and is accredited by the National Association for the

Education of Young Children. "The heart of NAEYC accreditation focuses on the child's experience," said Jackie Neel, Director of the City's Child Care and Family Support Services Division. "The process carefully considers all aspects of a program, including health and safety, staffing, staff qualifications and physical environment. The greatest emphasis is on the children's relationships with the staff and how the program helps each child grow and learn intellectually, physically, socially and emotionally." According to Ms. Neel, research supports the increased quality of services obtained by completing the process of self-study and achieving accreditation. Children's language and social skills especially benefit from the better quality found in NAEYC-accredited programs. Adds Ms. Neel, "these are critical areas for children's success in school as well as in life."

# employmentforall



The Department of Human Service Programs, through its Office of Workforce Development (OWD), helps hundreds of Cambridge youth and adult residents prepare for work and find jobs. OWD programs and services reach nearly 1,000 residents and businesses each year.

## THE CAMBRIDGE EMPLOYMENT PROGRAM

The **Cambridge Employment Program (CEP)** offers free job search assistance to Cambridge residents 18 and over. CEP staff help residents identify their skills, prepare resumes and cover letters and learn strategies to find job openings using traditional sources and the Internet. Job seekers have access to computers, phones and a fax machine to aid them in their job search. Residents come from a range of backgrounds: some may be re-entering the workforce or are in search of a better job; others may be recent immigrants who need coaching to better understand the American work culture. CEP career counselors help people assess their employment options, identify employers and prepare for interviews. For those who need additional training or education to achieve their career goals, CEP staff help them identify options.

CEP staff are committed to helping people find jobs and will continue to work with someone for as long as it takes. Christine Williams described her relationship with her career counselor in this way, "It is definitely a partnership. It was about me showing up and her being there for me." Christine followed up on the leads generated by her counselor, but it was knowing that she had someone to encourage her that made the strongest impression. One day Christine's counselor told her that she had been in contact with a hiring manager from Tufts University Dining Services. Christine went over that day for an interview. She was asked back for a second and third interview and offered a full-time position. "I love this job," Christine said. She has been in her position since September 2004.

Searching for a job is never easy, but the CEP team helps people stay motivated and focused so that they can achieve the goals they set for themselves. CEP is unusual in its ability to provide individualized service, but program staff also connect residents to other agencies, such as Career Source, to supplement CEP's one-on-one counseling with workshops and other resources available through the One Stop Career Center.

For more information about the Cambridge Employment Program, call Fred Berman at 617-349-6209.

## SUMMER YOUTH EMPLOYMENT REVIEW

Last summer was a busy one for teens in the city. Through the **Mayor's Summer Youth Employment Program (MSYEP)**, 750 young people worked in City offices and non-profit organizations, gaining employment skills on the job and through a series of workshops. MSYEP offers a "first work" experience, serving mostly 14- and 15-year olds. Teens work 20 hours per week for six weeks, with wages paid by the City. During July and August, they also participated in Field Day, college tours and an end-of-program dance to celebrate a successful summer.

With a grant from the state, OWD ran a new program last summer, **YouthWorks**, which focused on older, income-eligible teens. Forty teens, ages 16 to 18, applied to the program. Each applicant went through a competitive interview process with representatives from eight non-profit organizations. Twenty-two teens were selected for employment at one of the agencies. Participants also attended weekly seminars to discuss their goals, explore their career interests and reflect on new skills.

## FALL AND WINTER YOUTH EMPLOYMENT

The **Fall Youth Employment Program (FYEP)** is a small-scale version of MSYEP. In fact, only 14- or 15-year olds who participated in last summer's MSYEP are eligible to apply. Twenty-five young people will be selected for this nine-week program which employs them for 10 hours a week after school. In some instances, the teens will return to the same jobs they held over the summer, but most will be assigned to new sites, such as child care centers, City offices and afterschool programs. FYEP, now in its fifth year, provides a supported work experience, complete with advanced job-readiness workshops and an end-of-program celebration. For more information, contact George Hinds at 617-349-6268 or [ghinds@cambridgema.gov](mailto:ghinds@cambridgema.gov).

resume writing, skills identification, interviewing and workplace expectations. They also meet local employers in mock interviews sessions and conduct informational interviews on visits to companies such as BBN Technologies, Gentle Giant and Kirkland Construction. For more information, contact Jeannette Herrmann Sheahan at 617-349-6272 or [jherrmann@cambridgema.gov](mailto:jherrmann@cambridgema.gov).

The **Neighborhood Service Project (NSP)** is a paid community-based service-learning program that introduces young people, ages 14-15, to the world of work by engaging them in the development of a project that affects their neighborhood. Run by OWD and based at the City's Youth Centers, NSP teens identify a need in their community, design a project to address the need, and showcase their work to the community at large. The program begins in February and ends in May. For more information, contact George Hinds at [ghinds@cambridgema.gov](mailto:ghinds@cambridgema.gov) or 617-349-6268. ■



### EMPLOYMENT RESOURCES

Cambridge Employment Program  
617-349-6166  
[www.cambridgema.gov/DHSP2/cep](http://www.cambridgema.gov/DHSP2/cep)

Career Source  
617-661-7867  
[www.yourcareersource.com](http://www.yourcareersource.com)

The Career Place  
781-932-5500  
[www.careerplacejobs.com](http://www.careerplacejobs.com)

Just A Start  
617-494-0444  
[www.justastart.org/training](http://www.justastart.org/training)

For a copy of *Cambridge Works and Learns*, a directory of local employment, training and education programs, contact OWD at 617-349-6234.

**PACE (Personal And Career Exploration)** is a job-readiness training that meets once a week for six weeks during the school year at Cambridge Rindge and Latin School (CRLS). Sessions are held in the fall, winter and spring. The PACE curriculum is designed to help CRLS students ages 16+ learn skills to succeed in the workplace while learning more about a career of interest to them. Students receive training on

**Photos (left to right, from opposite page):** Participants in the MSYEP enjoy Field Day on Cambridge Common; CEP Resource Room Assistant, Winifred Jackson, helps a client look for jobs on the Internet; Teens enjoy the MSYEP Field Day; Older teens participate in the YouthWorks Summer Jobs Program, working at non-profit organizations and attending seminars to enhance their skills.

# KEEPING CAMBRIDGE

# AFFORDABLE FOR ALL



THE CAMBRIDGE COMMUNITY DEVELOPMENT DEPARTMENT'S HOUSING DIVISION



**D**uring a time of skyrocketing housing costs, while sources for the construction of new affordable housing are shrinking, the City of Cambridge is committed to the preservation and creation of quality affordable housing. The substantial local, state and federal resources that are dedicated to affordable housing initiatives throughout Cambridge demonstrate this commitment. Adopted by Cambridge voters in 2001, the Community Preservation Act (CPA) provides an important additional source of funds for housing production. CPA funds dedicated to affordable housing are administered by the Cambridge Affordable Housing Trust, which has used this funding in combination with other public and private sources to create 328 affordable housing units throughout the City. In addition to working with the Trust to preserve and create affordable rental and ownership units, the City offers a broad range of housing programs designed to keep Cambridge families in the community and to maintain the diversity of the city.

## WHAT WE DO

The Community Development Department's (CDD) Housing Division administers a variety of programs to assist low and moderate-income Cambridge residents and to preserve and create permanent affordable rental and homeownership opportunities across the City. Strategies to create more affordable housing include: new construction, acquisition and rehabilitation of existing residential buildings, condominium acquisition, financial assistance and education for first-time homebuyers, conversion of non-residential buildings to affordable housing and planning and zoning initiatives designed to produce new affordable units. Cambridge ensures the long term affordability of its affordable units through a deed restriction on each property. The City also offers home improvement assistance

programs for owners of single and multi-family properties.

## PARTNERSHIPS

Strong partnerships are essential to carrying out the many affordable housing programs and policies CDD oversees. The City Council, City Manager, Cambridge Affordable Housing Trust and the Community Preservation Act Committee are all key partners. The Cambridge Housing Authority, CASCAP, Inc., Homeowner's Rehab, Inc. and Just A Start Corporation are responsible for much of the on-the-ground work. The federal and state governments provide additional financial support for housing through CDBG, HOME and other programs.

## RECENT PROJECTS

**Trolley Square** – Under construction since May 2005, the Trolley Square development is

the result of a three-year planning process. Homeowner's Rehab, Inc. was designated as the developer of this City-owned land in January 2004 and is now under way with the 40-unit development which includes 32 rental units and 8 homeownership units with community, retail and public open space. Trolley Square will serve a range of incomes with units targeted for low, moderate and middle-income households and is anticipated to be complete by the summer of 2006.

**Bolton Street Condominiums –**

The Bolton Street Condominium project at the corner of Bolton and Blair Streets was just completed. Developed by Just A Start, the six-unit affordable homeownership project includes a combination of renovation and new construction. Six first-time homebuyers moved into the units at the end of the summer.

**Scouting Way –** Just A Start's Scouting Way development on Prospect Street was completed in January 2005. The 13-unit affordable rental development includes both two and three-bedroom units. Scouting Way

**Photos (left to right, from opposite page):** *Scouting Way*: 13 affordable rental units completed by Just A Start in 2005; *Trolley Square*: 40 affordable rental and homeownership units currently under construction and sponsored by Homeowner's Rehab, Inc.; *Auburn Street Apartments*: 7 affordable rental units developed by CASCAP in 2003; *Bolton Street Condominiums*: 6 affordable rental units recently completed by Just A Start.



combined historic preservation and new construction and recently won a Preservation Award from the Cambridge Historical Commission.

**Auburn Street Apartments –**

CASCAP's Auburn

Street development was completed in 2003 under the City's Affordable Small Apartment Preservation initiative. The initiative seeks to preserve and develop affordable rental units for individuals of low and moderate income, with a specific focus on preserving Cambridge's few remaining lodging houses. The Auburn Street site was a former dilapidated lodging house which was renovated to create seven new studio and one-bedroom apartments for low and moderate-income individuals. ■



**CITY HOUSING PROGRAMS AND SERVICES**

**First Time Homebuyer Classes**

CDD offers free education and counseling for first-time homebuyers. The First Time Homebuyer Workshop is offered regularly throughout the year and consists of four 2-hour sessions designed to assist potential homebuyers in understanding the home buying process. Individual homebuying counseling is available to class graduates.

**First-time Homebuyer Financial Assistance Program**

The City offers need-based financial assistance to eligible first-time homebuyers. Funding includes deferred loans and grants for downpayment and closing costs assistance in purchasing condominium units.

**Home Improvement Assistance Programs**

The City offers zero and low-interest home improvement loans to income-eligible owner occupants of one to four-family buildings and provides low-interest loans to owners of multi-family properties in return for rental units with long-term affordability restrictions.

**For More Information**

For more information about affordable housing opportunities or programs in Cambridge, or to be added to the mailing list of residents who want to be notified when affordable rental and ownership units are available, please call the Housing Information Line at 617-349-4622 or visit the Housing Division's Web site at [www.cambridgema.gov/~CDD/hsg](http://www.cambridgema.gov/~CDD/hsg).

# REFERENCE & RESOURCES

## SETTLING IN

### FOR NEW CITY RESIDENTS

- ▶ **County** The City of Cambridge is in Middlesex County.
- ▶ **Driver's License/Vehicle Registration** Massachusetts Registry of Motor Vehicles, 866-627-7768 [www.mass.gov/rmv](http://www.mass.gov/rmv)
- ▶ **Excise Tax (automobile tax)** Bills are issued annually. Call the Finance Dept. 617-349-4220. To pay online: [www.cambridgema.gov](http://www.cambridgema.gov)
- ▶ **Libraries** Call 617-349-4040 or visit [www.cambridgema.gov/~CPL](http://www.cambridgema.gov/~CPL)
- ▶ **Moving Van Permits** Call 617-349-4721 or visit [www.cambridgema.gov/Traffic](http://www.cambridgema.gov/Traffic)
- ▶ **Municipal Channel (City TV-8)** For calendar information, community programs, and City Council meetings on Mondays at 5:30 p.m.
- ▶ **Postal Service** Call 800-275-8777 or visit [www.usps.com](http://www.usps.com)
- ▶ **Pet Registration** Dogs must be registered with the Cambridge Animal Commission. Call 617-349-4376 or visit [www.cambridgema.gov/dept/animal.html](http://www.cambridgema.gov/dept/animal.html)
- ▶ **Public Transportation**  
Massachusetts Bay Transportation Authority (MBTA), 800-392-6100 or visit [www.mbtta.com](http://www.mbtta.com). The Red and Green Lines of the Subway (known as the T) and numerous buses serve Cambridge.
- ▶ **Real Estate Tax** Bills are issued twice annually. Call the Finance Dept. 617-349-4220.
- ▶ **Recreation, Families, Youth Centers, Seniors, Adult Education** The Department of Human Service Programs provides a wide range of services. See page 22.
- ▶ **Recycling/Trash Pick-up** Cambridge has a mandatory recycling ordinance. See page 19.
- ▶ **Resident Parking Permits**  
Permits are required for on-street parking in posted residential neighborhoods. See page 19.
- ▶ **School Information and Registration** See page 25.
- ▶ **School Closings and Information**  
Call the CPS Link Line for recorded information, 617-349-6513.
- ▶ **Snow Emergency Parking Ban**  
When the City declares a snow emergency, parking is prohibited on major streets and on one side of smaller streets as indicated by signs. See page 19.
- ▶ **Snow Removal Ordinance** Property owners are required to remove snow and/or ice from all sidewalks next to their home or business within a limited number of hours once snow stops falling. See page 19.
- ▶ **Street Cleaning** Streets are cleaned once a month. During designated street cleaning days, from April through December, cars must be moved or they will be ticketed and towed. See page 19.
- ▶ **Voter Registration** Call the Cambridge Election Commission, 617-349-4361 or visit [www.cambridgema.gov/~Election](http://www.cambridgema.gov/~Election). See page 21.

### UTILITIES

- ▶ **Electricity/Gas**  
**NSTAR** 800-592-2000 TTY 800-322-8242 [www.nstaronline.com](http://www.nstaronline.com) **Dig Safe** 888-344-7233  
Provides electric and gas service in Cambridge.
  - ▶ **Telephone** The area code for Cambridge is 617. It is necessary to dial the area code plus the number for all calls, local or long distance. For long distance calls, dial 1 plus the area code and phone number.  
**Local and Long Distance Service**  
Call each vendor for details.  
**AT&T** 800-501-3045 [www.att.com](http://www.att.com)  
**Comcast** 888-COMCAST [www.comcast-ne.com](http://www.comcast-ne.com)  
**Verizon** 800-870-9999 [www.verizon.com](http://www.verizon.com)
  - ▶ **Internet Access** For AT&T dial-up or DSL service, call 800-967-5363. For cable internet access, call Comcast at 888-COMCAST. For Verizon DSL Internet Services, call 877-483-5898.
  - ▶ **Water/Sewer** 617-349-4770 [www.cambridgema.gov/~water](http://www.cambridgema.gov/~water)  
The City of Cambridge owns and operates its own water utility. Bills are issued quarterly. Visit the Web site to pay online.
  - ▶ **Cable Television**  
**Comcast**  
888-COMCAST [www.comcast-ne.com](http://www.comcast-ne.com)  
Offers analog or digital cable television, high-speed internet access, and local and long distance digital telephone services.
- ▶ Check out the City's Web site for more resources and helpful information.  
**[www.cambridgema.gov](http://www.cambridgema.gov)**

► **Important Numbers**

Emergency: Police, Fire and Ambulance 911  
 Police (non-emergency) 617-349-3300  
 Fire (non-emergency) 617-349-4900  
 Public Health Dept. 617-665-3800  
 Public Schools 617-349-6400  
 Public Works 617-349-4800

► **Cambridge City Hall**

795 Massachusetts Avenue  
 Cambridge, MA 02139\*  
 617-349-4000 TTY 617-349-4242\*\*  
[www.cambridgema.gov](http://www.cambridgema.gov)

\* Address for all departments in City Hall  
 \*\*TTY number for all departments in City Hall  
 Mon., 8 a.m. - 8 p.m., Tues. - Thurs., 8:30 a.m. - 5 p.m., Fri., 8:30 a.m. - 12 p.m.

► **City Manager's Office**

617-349-4300  
[www.cambridgema.gov/cmanager.cfm](http://www.cambridgema.gov/cmanager.cfm)  
 Robert W. Healy, City Manager  
 Richard C. Rossi, Deputy City Mgr.  
 The City Manager is appointed by the City Council as the City's Chief Executive Officer.  
 E-mail: [citymanager@cambridgema.gov](mailto:citymanager@cambridgema.gov)

► **City Council Office**

617-349-4280  
[www.cambridgema.gov/dept/ccouncil.cfm](http://www.cambridgema.gov/dept/ccouncil.cfm)  
 The City Council is the City's elected legislature. City Council meetings are held Mondays at 5:30 p.m. in the Sullivan Chamber of City Hall. Meetings are broadcast live on City TV-8.  
 E-mail: [council@cambridgema.gov](mailto:council@cambridgema.gov)

► **Mayor's Office**

617-349-4321  
[www.cambridgema.gov/mayor.cfm](http://www.cambridgema.gov/mayor.cfm)  
 Michael A. Sullivan, Mayor  
 The Mayor chairs City Council and School Committee meetings and serves as the City's political leader. E-mail: [mayor@cambridgema.gov](mailto:mayor@cambridgema.gov)



► **City Information Lines**

Graffiti Hotline 617-349-6955  
 Parks and Urban Forestry 617-349-6434  
 Public Construction Updates 617-349-4863  
 Potholes/Sidewalk/Street Repairs 617-349-4854  
 Recycling 617-349-4005  
 Rodent Control 617-349-4899  
 School Closings/Information Line 617-349-6513  
 Snow Emergency Parking Bans 617-349-4700  
 Snow Hotline (unshoveled/icy sidewalks) 617-349-4903

► **City Departments**

Affirmative Action 617-349-4331  
 Animal Commission 617-349-4376  
 Arts Council 617-349-4380  
 Assessing 617-349-4343  
 Auditing 617-349-4240  
 Budget 617-349-4270  
 Cable TV 617-349-4296  
 City Clerk 617-349-4260  
 City Council Office 617-349-4280  
 City Manager's Office 617-349-4300  
 Community Development 617-349-4600  
 Commission for Persons With Disabilities 617-349-4692  
 TTY 617-492-0235

Conservation Commission 617-349-4680  
 Consumers' Council 617-349-6150  
 Election Commission 617-349-4361  
 Electrical 617-349-4925  
 Emergency Communications 617-349-6911  
 Emergency Management 617-349-4842  
 Finance 617-349-4220  
 Fire (non-emergency) 617-349-4900  
 Health Department 617-665-3800  
 Historical Commission 617-349-4683  
 Human Rights Commission 617-349-4396  
 Human Services 617-349-6200  
 Inspectional Services 617-349-6100  
 Law 617-349-4121  
 Library 617-349-4040  
 License Commission 617-349-6140  
 Management Info. Systems (MIS) 617-349-4140  
 Mayor's Office 617-349-4321  
 Peace Commission 617-349-4694  
 Personnel 617-349-4332  
 Police (non-emergency) 617-349-3300  
 Police Review & Advisory Board 617-349-6155  
 Public Works 617-349-4800  
 Purchasing 617-349-4310  
 Schools 617-349-6400  
 Traffic, Parking and Transportation 617-349-4700  
 Veterans' Services 617-349-4761  
 Water 617-349-4770  
 Weights & Measures 617-349-6133  
 Women's Commission 617-349-4697

► **Other Helpful Numbers**

Cambridge Housing Authority 617-864-3020  
 Massachusetts Department of Conservation and Recreation (formerly the MDC) 617-626-1250  
 Middlesex County Courthouse 617-494-4000

▶ **Massachusetts Bay Transportation Authority (MBTA)**  
 800-392-6100, 617-222-3200  
[www.mbta.com](http://www.mbta.com)

▶ **Bus Routes 617-222-3200**  
 Local routes are just 90¢, but a few “zoned local” routes and longer bus rides cost more. For schedules and PDFs of bus routes, go to [www.mbta.com](http://www.mbta.com).

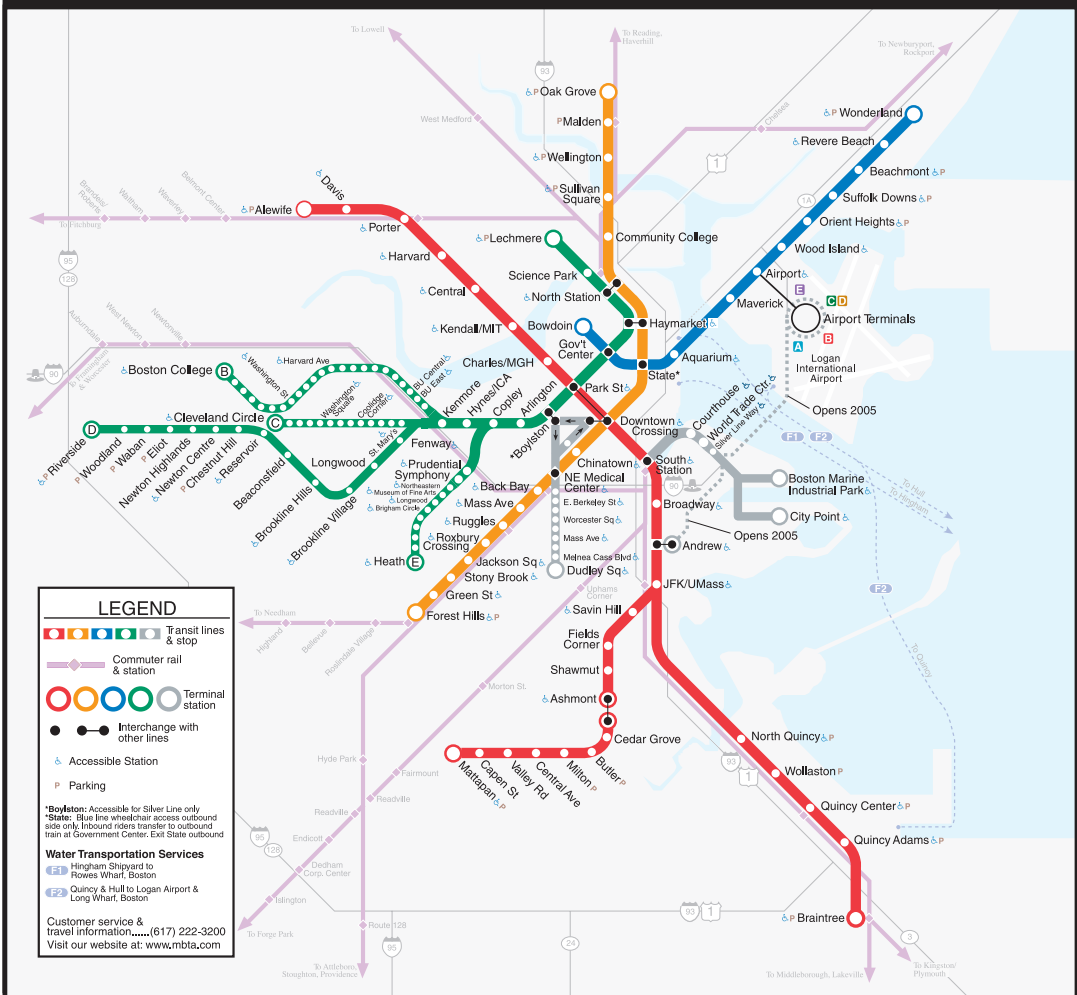
▶ **Subway (the “T”) 617-222-3200**  
[www.mbta.com/subway](http://www.mbta.com/subway)  
 Cambridge is served by the red and green lines. Cambridge stations are: Alewife, Porter, Harvard, Central, and Kendall on the red line, and Lechmere on the green line. With some exceptions, most rides are \$1.25.

▶ **T Passes**  
 For information on passes and fares for the subway, bus, commuter rail, and boat go to [www.mbta.com/traveling\\_t/passes\\_index.asp](http://www.mbta.com/traveling_t/passes_index.asp) Passes can be purchased at 12 locations in Cambridge, including the Alewife, Harvard Square, and Lechmere stations. All locations accept cash only, except Harvard Square, which also accepts Visa and Mastercard. Visit [www.mbta.com/traveling\\_t/passes\\_typespassesfares.asp](http://www.mbta.com/traveling_t/passes_typespassesfares.asp) for a complete listing of sales locations.

▶ **Commuter Rail 617-222-3200**  
 Beginning at North Station, the Fitchburg Line connects Porter Square with stops including Belmont, Concord, and Ayer, ending in Fitchburg.

▶ **Cambridge-North Station EZRide Shuttle 617-8EZ-Info** [www.EZRide.info](http://www.EZRide.info)  
 A service of the Charles River Transportation Management Association (CRTMA). EZRide connects with the MBTA at North Station, Lechmere, and Kendall Square, and with several Cambridge destinations such as the Galleria and University Park. It operates every 12 minutes during peak hours, Monday-Friday, except holidays. The fare is \$1.

**Subway & Commuter Rail Map, printed courtesy of the MBTA**





Once you have established residency in Cambridge, you must obtain a Massachusetts driver's license to retain driving privileges. If you currently carry a valid license from another state, a U.S. territory, Canada, or Mexico, you may be eligible to submit your license for conversion. If you have moved to Cambridge from elsewhere within the state of Massachusetts, you must notify the Registry of your address change within 30 days of your move, in writing, on the RMV Web site, or by calling the RMV.

▶ **Massachusetts Registry of Motor Vehicles**  
1-866-627-7768      [www.mass.gov/rmv](http://www.mass.gov/rmv)

▶ **Closest Full Service Branches**

<b>Boston RMV</b>	<b>Watertown RMV</b>
630 Washington Street	550 Arsenal Street
Boston, MA	Watertown, MA

**Services provided:** all license, registration & title transactions, license plate returns, learner's permit testing, and road tests.

Monday - Wednesday, Friday 8:30 a.m. - 5 p.m.,  
Thursday 8:30 a.m. - 7 p.m.

**Payment accepted:** Cash, Check, Money Order  
(MasterCard, Visa and Discover accepted only for license transactions)

**Wait times:** Call 866-627-7768 to hear approximate wait times at local branch offices.

▶ **Out-of-State License Conversions**

A typical out-of-state conversion costs \$90. Visit [www.mass.gov/rmv](http://www.mass.gov/rmv) for a detailed fee schedule. You must bring appropriate identification with you, including:

- Social Security Card or valid US Passport **PLUS** 3 additional forms of ID, including at least one from the primary list.
- Current photo ID from the Primary Document list.  
Visit [www.mass.gov/rmv/license/3id.htm](http://www.mass.gov/rmv/license/3id.htm) to download a PDF listing acceptable identification documents.
- Proof of MA residency from the Secondary Document list.  
Visit [www.mass.gov/rmv/license/3id.htm](http://www.mass.gov/rmv/license/3id.htm) to download a PDF listing acceptable proof of MA residency.

▶ **Registering Your Vehicle**

You must register your vehicle in Massachusetts as soon as you become a Massachusetts resident. There is no grace period. (For a full description of the registration process, visit [www.mass.gov/rmv/regs/index.htm](http://www.mass.gov/rmv/regs/index.htm)).

1. First, obtain an active insurance policy from a licensed MA insurance agent and an RMV-1 form. Have the agent complete, stamp, and sign the RMV-1. If you have a car loan, you will be required to surrender your out-of-state registration rather than your title, and your RMV-1 must list the lienholder information as well as the title number.
2. Verify the information on the RMV-1 and sign it.
3. If your vehicle is exempt from MA sales tax, fill out an Affidavit in Support for Exemption from Sales or Use Tax (MVU-29).
4. Take these documents to a full-service RMV office to get a registration certificate, new plates, and a year of expiration decal. The title will be processed and mailed to you (or if you have a loan, the title will be mailed directly to the lienholder).
5. You may be required to pay a 5% sales tax, and a registration and title fee if applicable.

▶ **Vehicle Inspection**

Within **seven days** of registering your vehicle, it must undergo a safety and emissions inspection. If it passes the inspection, you will receive a sticker that is valid for one year.

To find an inspection station in your area, check the yellow pages, call the hotline at 877-387-8234, or go to the Enhanced Emissions and Safety Test Web site by visiting [www.mass.gov/rmv/stations/index.htm](http://www.mass.gov/rmv/stations/index.htm) and clicking on "Vehicle Inspection Stations."



## BUSINESS RESOURCES

- ▶ **Cambridge Chamber of Commerce** 617-876-4100  
[www.cambridgechamber.org](http://www.cambridgechamber.org)
- ▶ **Center for Women & Enterprise**  
617-536-0700 [www.cweonline.org](http://www.cweonline.org)
- ▶ **Central Square Business Assoc.**  
617-864-3211  
[www.centralsquarecambridge.com](http://www.centralsquarecambridge.com)
- ▶ **Harvard Square Business Assoc.**  
617-491-3434 [www.harvardsquare.com](http://www.harvardsquare.com)
- ▶ **Economic Development Division**  
617-349-4637 [www.cambridgema.gov/~CDD/ed](http://www.cambridgema.gov/~CDD/ed)  
Offers assistance, information and resources for businesses, including counseling, façade improvement, retail best practices, and site search.
- ▶ **Office of Workforce Development**  
617-349-6234 [www.cambridgema.gov/DHSP2/owd.cfm](http://www.cambridgema.gov/DHSP2/owd.cfm)  
Builds partnerships between schools, community organizations and businesses to expand employment and training opportunities for Cambridge residents.
- ▶ **State Office of Minority and Women Business Assistance** 617-973-8692 [www.somwba.state.ma.us](http://www.somwba.state.ma.us)

## CERTIFICATES, LICENSES, PERMITS & TAXES

- ▶ **Animal Commission** 617-349-4376  
[www.cambridgema.gov/dept/animal.html](http://www.cambridgema.gov/dept/animal.html)  
Dogs must be registered with the Cambridge Animal Commission, which is also responsible for dog licenses, rabies vaccination, and stray animals. For emergencies, call 617-349-3300.
- ▶ **Assessing Department**  
617-349-4343  
[www.cambridgema.gov/~Assessor](http://www.cambridgema.gov/~Assessor)  
Manages commercial and residential property values and the property database, including changes of title and subdivisions, and personal property (business) tax. Administers residential exemption tax relief programs, including community outreach for taxpayer assistance. Processes commitments of motor vehicle excise tax. Grants abatements/personal exemptions of real estate, personal property, and motor vehicle excise tax.
- ▶ **Arts Council** 617-349-4380  
[www.cambridgema.gov/cac](http://www.cambridgema.gov/cac)  
Issues street performer's permits.
- ▶ **City Clerk's Office** 617-349-4260  
[www.cambridgema.gov/~CityClrk](http://www.cambridgema.gov/~CityClrk)  
The City Clerk is the City's official record keeper. The following certificates can be obtained through the City Clerk's Office: Birth, Death, Marriage, and Business Certificates.
- ▶ **Conservation Commission**  
617-349-4680  
[www.cambridgema.gov/~CCC](http://www.cambridgema.gov/~CCC)  
Issues Wetlands Protection Act Permits.
- ▶ **Finance Department**  
617-349-4220 [www.cambridgema.gov/dept/finance.html](http://www.cambridgema.gov/dept/finance.html)  
Billing and collecting real estate and personal property taxes, water & sewer charges, and motor vehicle excise taxes. Issues municipal lien certificates.
- ▶ **Fire Department**  
617-349-4918 [www.cambridgefire.org](http://www.cambridgefire.org)  
Permits for smoke detectors, fire alarm and sprinkler systems, welding and torch use, and flammable storage.
- ▶ **Health Department**  
617-665-3800 [www.cambridgepublichealth.org](http://www.cambridgepublichealth.org)  
Regulates massage therapists, body art establishments, indoor ice rinks, and tanning salons. Oversees care and use of laboratory research animals.
- ▶ **Historical Commission**  
617-349-4683 [www.cambridgema.gov/~Historic](http://www.cambridgema.gov/~Historic)  
Renovation/demolition of historic buildings.
- ▶ **Inspectional Services**  
617-349-6100 [www.cambridgema.gov/~Inspect](http://www.cambridgema.gov/~Inspect)  
Administers state building codes; building, demolition, asbestos removal, and sign permits; electrical, gas, plumbing, and sprinkler permits; certificates of occupancy/inspection; curb cut applications; sanitary code inspections; permitting for restaurants/day camps/pools/tobacco sale; enforcement of zoning ordinance. Call for construction-related noise complaints.
- ▶ **License Commission**  
617-349-6140 [www.cambridgema.gov/~License](http://www.cambridgema.gov/~License)  
Administers licenses and enforces regulations governing: alcohol, antique stores, auctions, entertainment, festivals, garage and gasoline, hackney, innholder, jitney, livery/limousine, lodging, open air parking, package goods, palm readers, peddlers/vendors, and restaurants. Call for repetitive noise complaints.
- ▶ **Police Department** 617-349-3337  
[www.cambridgepolice.org](http://www.cambridgepolice.org) Permits to carry firearms.
- ▶ **Public Works** 617-349-4846  
[www.cambridgema.gov/TheWorks](http://www.cambridgema.gov/TheWorks)  
Permits for special events, reserving a park for non-athletic use, sidewalk obstruction, excavation, and newsrack vendors.
- ▶ **Recreation Division**  
617-349-6238 [www.cambridgema.gov/~DHSP/rec](http://www.cambridgema.gov/~DHSP/rec)  
Reserving a field for athletic use.
- ▶ **Traffic, Parking & Transportation**  
617-349-4721 [www.cambridgema.gov/Traffic](http://www.cambridgema.gov/Traffic)  
Permits for street obstruction/closure, moving vans, and dumpsters.

▶ **Department of Public Works (DPW)**

147 Hampshire Street 617-349-4800  
[www.cambridgema.gov/TheWorks](http://www.cambridgema.gov/TheWorks)  
 Cambridge Cemetery 617-349-4890  
 Engineering 617-349-4845  
 Service Requests 617-349-4846  
 Sewer Maintenance 617-349-6426  
 Street Maintenance 617-349-4851

▶ **Street Cleaning 617-349-4847**

On designated street cleaning days, once a month from April through December, cars must be moved for street cleaning or they will be ticketed and towed. Check neighborhood signs for schedules or visit the DPW Web site and click on Services > Street Cleaning.

▶ **Trash Collection 617-349-4849**

The DPW's Sanitation Division provides weekly curbside pickup of solid waste and pre-arranged pick-up of white goods (large appliances). Hazardous waste drop-off is held three times per year. (Next date: October 22, 2005). For a trash collection schedule, visit the DPW Web site and click on Services > Rubbish Disposal.

▶ **Curbside Recycling 617-349-4866**

The City has a mandatory recycling ordinance requiring residents, businesses and institutions to recycle. Recycling containers and weekly curbside pick-up (on the same day that trash is collected) are provided free. For a list of how and what to recycle, call 617-349-4005, then dial 1 twice for a recorded description in English, or visit the DPW Web site and click on Services > Recycling.

▶ **Drop-Off Center Recycling**

147 Hampshire Street  
 Tuesday & Thursday, 4 p.m. - 7:30 p.m.  
 Saturday, 9 a.m. - 4 p.m.  
 Accepts a range of materials not picked up at curbside. For a list of accepted materials, visit the DPW Web site and select Divisions > Recycling > Drop-Off Center, or call 617-349-4879.

▶ **Yard Waste Recycling**

Separate yard waste is collected from April through December. Call or visit DPW Web site for schedule.

▶ **Snow Removal Ordinance**

Property owners are required to remove snow and/or ice from all sidewalks next to their property within 12 hours after snow stops falling in the daytime and before 1 p.m. if it has fallen during the night. Treat ice with an ice melting substance within six hours of the time it forms. For exemptions to elderly and disabled residents (who meet eligibility requirements) call 617-349-6220.

▶ **Permits 617-349-4846**

DPW administers permits for special events, filming or photographing on City property, reserving a park for non-athletic use, sidewalk obstruction, excavation, and newsrack vendors.

## TRAFFIC PARKING &amp; TRANSPORTATION

▶ **Traffic Parking & Transportation Department**

344 Broadway 617-349-4700  
[www.cambridgema.gov/Traffic](http://www.cambridgema.gov/Traffic)  
 For information on resident and disability parking, parking tickets, off-street parking, moving vans, street signs, traffic signals, and more.

▶ **Resident/Visitor Parking Permits**

Resident permits are required to park on residential streets. Your vehicle must be principally garaged in Cambridge and you must have proof of your residency (a utility bill dated within the last 30 days, indicating your Cambridge residence and in the same name as the vehicle registration). Visitor passes are also available and restricted to one per household. Visitors to a residential household should use the visitor pass.

▶ **Parking Ticket Payments/Disputes**

Tickets can be paid online at [www.cambridgema.gov/traffic](http://www.cambridgema.gov/traffic); by phone at 617-491-7277; by mail at P.O. Box 399113, Cambridge, MA 02139; and in person at 344 Broadway, Cambridge. To dispute a ticket, provide a written request that includes the ticket number, registration number, name and address, the reason for the dispute and a daytime phone number or e-mail address. You will be notified of your hearing date by mail.

▶ **Snow Emergency Parking Ban**

When a snow emergency is declared, parking is prohibited on major streets and on one side of smaller streets. Check posted signage carefully. To find out if a ban is in effect, visit [www.cambridgema.gov](http://www.cambridgema.gov), call 617-349-4700, or check City TV-8. Several garages provide limited free parking during a declared snow emergency (more info on the Web site).

▶ **Moving Van Permits**

Residents can reserve a space in front of their buildings for moving vans. A permit application, indicating the date, time, and truck footage of the moving van must be submitted 4 days prior to the move date. Call the Traffic Parking & Transportation Department or visit them online to obtain an application.

▶ **Assorted Permits 617-349-4721**

The Traffic Parking & Transportation Department issues permits for: block parties, street obstruction, moving vans, dumpsters, and contractor parking.

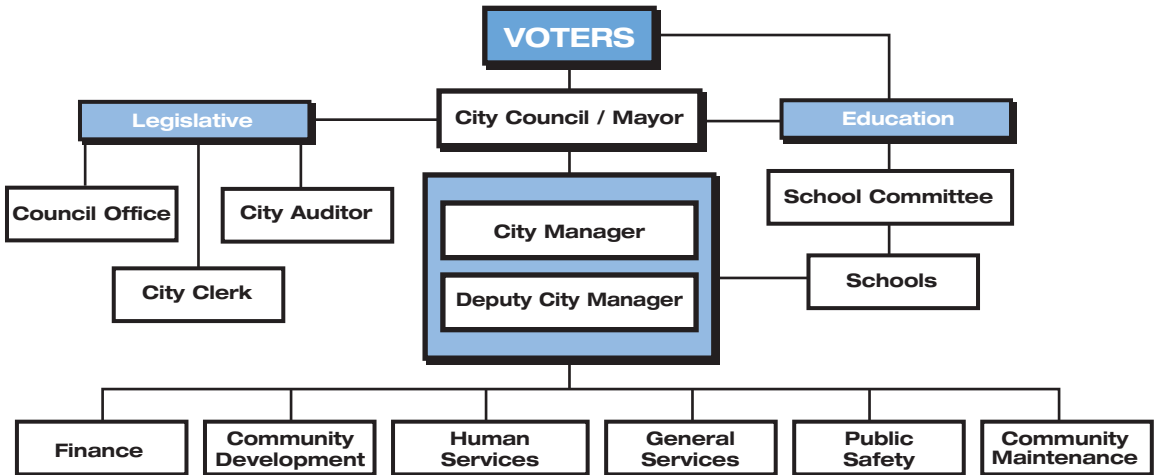
▶ **Towed Vehicles 617-349-3300**

If your car has been towed, call the Cambridge Police at the number listed above.

▶ **Signed Disability Parking Space**

If you have a handicapped plate or placard, you may file an application for a handicapped space. Requirements are stated on the application, which is available on the Traffic Parking & Transportation Web site or at the department.

# ORGANIZATIONAL CHART



Assistant City Manager  
Fiscal Affairs

- Assessing
- Auditing
- Budget
- Management Info. Systems
- Personnel
- Purchasing
- Revenue
- Treasury

Assistant City Manager  
Comm. Development

- Community Planning
- Economic Development
- Environmental & Transportation Planning
- Housing
- Lead-Safe Cambridge

Assistant City Manager  
Human Services

- Community Schools
- Elderly Services
- Childcare & Family Support Services
- Commission for Persons with Disabilities
- Community Learning Center
- Fuel Assistance
- Kids' Council
- Multi-Service Center
- Prevention Coalition
- Recreation
- Workforce Development
- Youth Programs

- Animal Commission
- Arts Council
- Cable Television
- Election Commission
- General Services
- Human Rights Commission
- Law
- Library
- Peace Commission
- Veterans' Services
- Women's Commission

- Electrical
- Emergency Communications
- Emergency Management
- Fire
- Inspectional Services
- License Commission
- Consumers' Council
- Police
- Police Review Board
- Traffic, Parking, & Transportation
- Weights & Measures

- Conservation Commission
- Historical Commission
- Public Works
- Water

## VOTING

### ► **Cambridge Election Commission**

51 Inman Street, 1st Floor 617-349-4361  
[www.cambridgema.gov/~Election](http://www.cambridgema.gov/~Election)

### ► **Voter Registration**

Call or visit the Cambridge Election Commission for registration, polling locations, and absentee ballots. Alternatively, you can now register to vote when you make a transaction at a Registry of Motor Vehicles branch or License Express location. You must be a U.S. citizen, a Cambridge resident, and at least 18 years old by election day to register. Mail-in forms are available at all Cambridge post offices, public libraries, schools, firehouses, and at the City Clerk's office.

### ► **2005 Election**

Municipal Elections will be held on Tuesday, November 8, 2005. The deadline to register to vote is Wednesday, October 19, 2005.



## CAMBRIDGE POLITICAL SYSTEM

### ► **Cambridge Political System Plan E Form of Government and Proportional Representation**

The City of Cambridge is governed by the Plan E form of Government. Nine City Councillors and six School Committee members are elected at large every two years under the Proportional Representation (PR) system, which allows voters to vote for as many candidates as they wish, but they must indicate their order of preference among those candidates by numbering each choice. Once elected, the City Council then elects a Mayor and a Vice Mayor. The Mayor chairs the City Council and School Committee and serves as the City's political leader. The City Council appoints a City Manager to serve as the City's Chief Executive Officer.

For more information on voting and the election process, call the Cambridge Election Commission at 617-349-4361 or visit their Web site, [www.cambridgema.gov/~Election](http://www.cambridgema.gov/~Election).



## HUMAN SERVICES

### ▶ **Dept. of Human Service Programs (DHSP)**

51 Inman Street 617-349-6200

[www.cambridgema.gov/DHSP2](http://www.cambridgema.gov/DHSP2)

Provides a wide range of services that enhance the quality of life of Cambridge residents.

### ▶ **Children, Youth & Families**

Assists with: advocacy/policy, afterschool programs, community schools, family events, literacy, support and classes, preschool childcare, resources for elderly relatives, seasonal youth programs, and youth centers, employment, service programs, teams and organizations.

**Cambridge Prevention Coalition** 617-349-6200

**Center for Families of North Cambridge** 617-349-6385

**Child-Care and Family Support Services** 617-349-6200

**Community Schools** 617-349-6200

**Kids' Council** 617-349-6239

**Youth and Teen Programs** 617-349-6200

### ▶ **Employment & Adult Education**

Provides assistance with adult basic education, career counseling, job searches, high school diploma/GED and college preparation programs, computer skills, job opportunities in the City, opportunities for employers, English for speakers of other languages, volunteer opportunities, and youth employment (including the Mayor's Summer Youth Employment Program).

**Cambridge Employment Program** 617-349-6166

**Community Learning Center** 617-349-6363

**Office of Workforce Development** 617-349-6234

### ▶ **Housing Assistance, Homelessness & Hunger**

Provides services to homeless and near homeless families and individuals, including food programs, housing search assistance, mental health and substance abuse counseling, counseling and advocacy for elders and persons with disabilities, and services to the Haitian population. The Fuel Assistance Program administers fuel assistance – a seasonal, needs-based program providing winter heating assistance to residents.

**Fuel Assistance Program** 617-349-6252

**Multi-Service Center for the Homeless** 617-349-6340

### ▶ **Commission for Persons with Disabilities**

Provides information on disability issues to Cambridge residents, employers, City departments, businesses and non-profits. CCPD promotes equal opportunity for people with all types of disabilities (physical, mental and sensory), ensures compliance with the Americans with Disabilities Act, and issues temporary disability parking permits and taxi discount coupons.

**CPD** 617-349-4692

**TTY** 617-492-0235

### ▶ **Seniors**

Services for seniors include: support services, classes, social services, meal programs, food pantry, transportation services, home based services, volunteer opportunities, taxi coupons, and other discounts.

**Citywide Senior Center** 617-349-6060

**Council on Aging / Senior Services**

617-349-6220

**North Cambridge Senior Center**

617-349-6320

### ▶ **Recreation and Enrichment**

Administers adult leagues and youth teams, classes, exercise programs, indoor and outdoor recreation sites, races, competitions, seasonal programs for youth, and special needs recreation.

**Recreation** 617-349-6200

### ▶ **www.CambridgeSomerville ResourceGuide.org** 617-349-6966

An online guide to health and human service resources, including 26 different service areas such as legal services, family support, employment services, and immigration services.

## RIGHTS AND RESOURCES

### ▶ **Affirmative Action Office** 617-349-4331

Works to increase the City's employment of minorities and women in proportion to their representation in the City's labor market.

### ▶ **Consumers' Council** 617-349-6150

[www.cambridgema.gov/consumer](http://www.cambridgema.gov/consumer)

For information on consumer rights and assistance in resolution of the full range of consumer disputes, from auto sales, home repair, and debt collection, to landlord/tenant issues.

### ▶ **Human Rights Commission** 617-349-4396

Investigates and resolves – by mediation or adjudication – complaints of discrimination that occur in Cambridge, in housing, employment, education, and public accommodations.

### ▶ **Personnel Department** 617-349-4332

City job openings are posted in City Hall, in Libraries, and on the Web site. Cambridge is an Affirmative Action/Equal Opportunity employer.

### ▶ **Peace Commission** 617-349-4694

[www.cambridgema.gov/dept/peace.html](http://www.cambridgema.gov/dept/peace.html)

Promotes peacemaking within Cambridge at the personal, neighborhood, and citywide level.

### ▶ **Police Review & Advisory Board**

617-349-6155

Hears and decides citizen complaints of misconduct filed against Cambridge Police Officers.

### ▶ **Women's Commission**

617-349-4697

[www.cambridgema.gov/Women](http://www.cambridgema.gov/Women)

Resources and assistance for women and girls.

### ▶ **Veterans' Services Department**

617-349-4761

[www.cambridgema.gov/~Veterans](http://www.cambridgema.gov/~Veterans)

Services for veterans and/or their dependents.

▶ **Community Development Department (CDD)**

**344 Broadway 617-349-4600**  
[www.cambridgema.gov/~CDD](http://www.cambridgema.gov/~CDD)

The mission of the Community Development Department is to enhance the physical environment and quality of life for Cambridge's highly diverse population. This is accomplished by planning and managing physical change and encouraging economic growth to strengthen the City's tax base, produce affordable housing and employment opportunities, and provide services to residents.

▶ **Community Planning Division (CDD) 617-349-4651**

[www.cambridgema.gov/~CDD/complan](http://www.cambridgema.gov/~CDD/complan)

Provides information and technical assistance on zoning, land use, urban design, demographic and geographic analysis, neighborhood planning, and development and renovation of parks and open space.

▶ **Economic Development (CDD) 617-349-4637**

[www.cambridgema.gov/~CDD/econdev/index](http://www.cambridgema.gov/~CDD/econdev/index)

Offers assistance to businesses, works to promote an environment for business growth and helps

maintain thriving commercial districts. Programs include business counseling, façade improvement and retail best practices programs, real estate site search, support for job training, and production of a development log.

▶ **Environmental & Transportation Planning (CDD) 617-349-4604**

[www.cambridgema.gov/~CDD/envirotrans](http://www.cambridgema.gov/~CDD/envirotrans)

Provides information and assistance on streetscape improvements, traffic calming, pedestrian/bicycle programs, vehicle trip reduction, climate protection, and preventing childhood lead poisoning.

▶ **Housing Division (CDD)**

**617-349-4622** [www.cambridgema.gov/~CDD/housing](http://www.cambridgema.gov/~CDD/housing)

Provides information and support for affordable rental housing production, homeownership opportunities, home improvement loans, and education and financial assistance for first time homebuyers.

▶ **Lead Safe Cambridge (CDD)**

**617-349-5323**

[www.cambridgema.gov/~LeadSafe](http://www.cambridgema.gov/~LeadSafe)

Provides information and support to prevent childhood lead poisoning and financial assistance for deleading.

▶ **Cambridge Housing Authority**

**617-864-3020** [www.cambridge-housing.org](http://www.cambridge-housing.org)

Develops and manages affordable housing for low-income individuals and families. Call for information on public housing or Section 8.

**PUBLIC SAFETY**

▶ **Police Department**

**Emergency 911**

**Non-emergency 617-349-3300**

[www.cambridgepolice.org](http://www.cambridgepolice.org)

CPD uses modern approaches and techniques to decrease crime and improve delivery of services to the community. The department also issues permits to carry firearms. Call the non-emergency line for immediate noise disturbances, including car or house alarms.

▶ **Police Neighborhood Meetings / Crime Prevention 617-349-3236**

[www.cambridgema.gov/~CPD/prevention](http://www.cambridgema.gov/~CPD/prevention)

Provides crime prevention tips, neighborhood meetings (scheduled as needed), block parties (and a limited number of funding grants), residential security surveys, rape aggression defense classes, bicycle safety, and school resource officers. A Sergeant is assigned to each neighborhood.

**Domestic Violence Community**

**Liaison 617-349-3371**

**Drug Tip Hotline 617-349-3359**

▶ **North Cambridge Crime Task Force**

**617-349-4293** [www.ncctf.nhfind.com](http://www.ncctf.nhfind.com)

A neighborhood coalition working together to reduce crime.

▶ **Fire Department (CFD)**

**Emergency 911**

**Non-emergency 617-349-4900** [www.cambridgefire.org](http://www.cambridgefire.org)

CFD has a Class I rating by the Insurance Services Office, recognizing the highest level of fire protection. Provides fire suppression, emergency medical services, heavy rescue service, hazardous materials response, water and dive rescue services, confined space rescue, etc. Call for smoke detector permits, fire prevention, and safety. The CFD also issues permits for smoke detectors, fire alarms, and sprinkler systems, welding and torch use, and flammable storage.

▶ **Emergency Communications Department**

**Emergency 911 Non-emergency 617-349-6911**

[www.cambridge911.org](http://www.cambridge911.org)

Operates the City's combined Emergency Communications and 911 Center (ECC), providing a link between residents and police and first responders in the case of emergencies and non-emergency public safety concerns.

▶ **Emergency Management Department**

**617-349-4842** [www.cambridgema.gov/~EM](http://www.cambridgema.gov/~EM)

Develops and coordinates the City's emergency plans. Provides the public with disaster preparedness information.

▶ **Childcare Programs (DHSP)**

617-349-6200

[www.cambridgema.gov/~DHSP/childcare](http://www.cambridgema.gov/~DHSP/childcare)

Licensed pre-school and afterschool childcare programs offer appropriate curriculum, for children 2 years and 9 months to 10 years.

**Preschool Programs**

East Cambridge Preschool

(Kennedy School) 617-349-4484

Peabody Preschool 617-349-6275

Martin Luther King Preschool  
617-349-6270

King Open Preschool 617-349-6261

Morse Preschool 617-349-4485

Haggerty Preschool 617-349-6265

**Afterschool Childcare Programs**

Peabody Afterschool 617-349-6276

King Afterschool 617-349-6271

Fletcher/Maynard Afterschool  
617-349-6296

Morse Afterschool 617-349-6039

King Open Extended Day 617-349-6078

▶ **Neighborhood Councils and Community Schools** 617-349-6200

[www.cambridgema.gov/~DHSP/cs](http://www.cambridgema.gov/~DHSP/cs)

Neighborhood Councils and Community Schools offer educational, recreational, and social programs for all ages, including afterschool enrichment classes, school vacation programs, and summer camps.

Agassiz (at Baldwin School) 617-349-6287

Cambridgeport 617-349-6307

Fitzgerald

(at Peabody School) 617-349-6302

Fletcher/Maynard 617-349-6295

Haggerty 617-349-6264

Harrington

(at King Open School) 617-349-6305

Kennedy 617-349-6308

Linnaean

(at Graham & Parks School) 617-349-6267

Longfellow 617-349-6260

Martin Luther King 617-349-6269

Morse 617-349-6291

Tobin 617-349-6300

▶ **Special Needs Programs**

617-349-6200

Afterschool, weekend and summer recreation programs for children and youth with special needs. Sites for summer programs may vary. All other programs are located at Gately Youth Center, 70R Rindge Ave., Cambridge.

▶ **Youth Centers** 617-349-6200

[www.cambridgema.gov/~DHSP/youth](http://www.cambridgema.gov/~DHSP/youth)

Serves youth ages 9 - 19, developing social, recreational, leadership, and intellectual skills at five different youth centers throughout the city. Programs include employment assistance, homework help, literacy program, life skills workshops, guest speakers, community service projects, drug and alcohol prevention, sport leagues, trips and special events.

Area 4 617-349-6262

Frisoli 617-349-6312

Gately 617-349-6277

Moore 617-349-6273

West Cambridge 617-349-4489

▶ **Center for Families of North Cambridge**

617-349-6385 70R Rindge Ave

[www.cambridgema.gov/~DHSP/center](http://www.cambridgema.gov/~DHSP/center)

Neighborhood-based, school-linked family support program.

▶ **Kids' Council** 617-349-6239

[www.cambridgema.gov/~DHSP/kids](http://www.cambridgema.gov/~DHSP/kids)

Advocates for the well-being of children, youth, and families.

▶ **Summer Food Program** 617-349-6252

Provides nutritious meals to any child under 19 in the summer.

▶ **Cambridge Family & Children's Services**

617.876.4210 [www.helpfamilies.org](http://www.helpfamilies.org)

Promotes conditions that provide children and adolescents with stable home environments. CFCS secures adoptive and foster families for children of all ages, provides transitional homes for adolescents aging out of state care, offers services to families caring for a developmentally disabled child, and operates a mentor program for at-risk students.

▶ **Child Care Resource Center, Inc.**

617-547-1063 [www.ccrinc.org](http://www.ccrinc.org)

Serves parents and children through referral programs that provide access to child care, literacy and technology. Serves early care and education professionals with workshops, career counseling, and small business startup support.

▶ **CitySprouts.org** 617-491-0258 [www.citysprouts.org](http://www.citysprouts.org)

A year-round garden program in Cambridge public schools that partners with teachers to develop outdoor classrooms and garden-based learning.

▶ **The Guidance Center, Inc.**

617.354-2275 [www.guidancecenterinc.org](http://www.guidancecenterinc.org)

Provides developmental and mental health services to Cambridge children.



**Three Drummers Drumming**

Courtesy of Cambridge Arts Council



▶ **Cambridge Public Schools**

159 Thorndike Street 617-349-6400 [www.cpsd.us](http://www.cpsd.us)  
**School Closings & Events:** 617-349-6513  
**Office of Public Information:** 617-349-6516

Cambridge has 12 elementary schools (most of which are K-8), and one comprehensive high school (9-12). The Schools at a Glance booklet and the Family Resource Map of Cambridge are available through the Office of Public Information, the Family Resource Center, and online.

▶ **School Registration**

**Cambridge Family Resource Center**

459 Broadway (at the Cambridge Rindge & Latin School)  
 617-349-6551 [www.cpsd.us/frc/CambFamRes.cfm](http://www.cpsd.us/frc/CambFamRes.cfm)

**Kindergarten:** children must be 4 years old by March 31, 2005

**First Grade:** children must be 6 years old by August 31, 2005

The Family Resource Center, open year-round, registers students for school and connects families with local services, including pre-school and afterschool programs. Call schools to arrange tours.

▶ **School Committee** 617-349-6620 [www.cpsd.us](http://www.cpsd.us)

Six members of the board are elected at large, while the Mayor serves as Chair. The committee determines overall School Department policy and budget. Meetings are held at 6 p.m. on the first and third Tuesday of each month (except July and August). They are open to the public and are telecast and rebroadcast on Cable Ch. 95.

▶ **Public Elementary Schools**

**Amigos School** (Grades K - 8)  
 100 Putnam Avenue 617-349-6567

**Maria L. Baldwin School** (Grades K - 8)  
 28 Sacramento Street 617-349-6525

**Cambridgeport School** (Grades K - 8)  
 89 Elm Street 617-349-6587

**Fletcher / Maynard Academy** (Grades K - 8)  
 225 Windsor Street 617-349-6588

**Graham & Parks Alternative School** (Grades K - 8)  
 44 Linnaean Street 617-349-6577

**Haggerty School** (Grades K - 6)  
 110 Cushing Street 617-349-6555

**Kennedy / Longfellow School** (Grades K - 8)  
 158 Spring Street 617-349-6841

**Dr. Martin Luther King Jr. School** (Grades K - 8)  
 100 Putnam Avenue 617-349-6562

**King Open School** (Grades K - 8)  
 850 Cambridge Street 617-349-6540

**Morse School** (Grades K - 8)  
 40 Granite Street 617-349-6575

**Peabody School** (Grades K - 8)  
 70 Rindge Avenue 617-349-6530

**Tobin School** (Grades K - 8)  
 197 Vassal Lane 617-349-6600

▶ **Public High School**

**Cambridge Rindge and Latin School**

459 Broadway (Grades 9 - 12)  
[www.cpsd.us/crls](http://www.cpsd.us/crls) 617-349-6630

**Rindge School of Technical Arts**

[www.rindgetech.com](http://www.rindgetech.com) 617-349-7782

**High School Extension Program**

359 Broadway 617-349-6880  
[www.cpsd.us/hsep](http://www.cpsd.us/hsep)

▶ **Charter Schools**

**Benjamin Banneker Charter School (K-8)**  
 21 Notre Dame Avenue 617-497-7771

**Prospect Hill Academy** (Grades K - 12)  
 50 Essex Street 617-284-7800

▶ **Special Education Schools**

**Castle School** 617-354-5410  
 298 Harvard Street

**Farr Academy** 617-492-4922  
 71 Pearl Street

▶ **Private Schools**

**Boston Archdiocesan Choir School**  
 (Grades 5 - 8, Boys)  
 29 Mt Auburn Street 617-868-8658

**Buckingham, Browne & Nichols School**  
 (Grades PK - 12)  
 Gerrys Landing Road 617-547-6100

**Cambridge Friends School** (Grades PK - 8)  
 5 Cadbury Road 617-354-3880

**Cambridge Montessori School**  
 (Toddler - Grade 6)  
 161 Garden Street 617-492-3410

**Ecole Bilingue** (Grades PK - 12)  
 45 Matignon Road 617-499-1451

**Fayerweather Street School** (Grades PK - 8)  
 765 Concord Avenue 617-876-4746

**German School Boston** (Grades PK - 5)  
 54 Essex Street 617-497-8454

**Matignon High School** (Grades 9-12)  
 1 Matignon Road 617-876-1212

**North Cambridge Catholic High School**  
 (Grades 9 - 12)  
 40 Norris Street 617-876-6068

**Shady Hill School** (Grades PK - 8)  
 178 Coolidge Hill 617-868-1260

**St Peter Elementary School** (Grades PK - 8)  
 96 Concord Avenue 617-547-0101

▶ **Volunteering**

**Cambridge School Volunteers**  
[www.csvinc.org](http://www.csvinc.org) 617-349-6794

▶ **Hospitals****The Cambridge Hospital**

1493 Cambridge Street 617-665-1000

**Mount Auburn Hospital**

330 Mount Auburn Street 617-492-3500

**Youville Hospital & Rehabilitation Center**

1575 Cambridge Street 617-876-4344

▶ **Cambridge Health Alliance**

1493 Cambridge Street 617-665-2300

[www.challiance.org](http://www.challiance.org)

Cambridge Health Alliance is an innovative, award-winning healthcare system that provides high quality care in Cambridge and throughout Boston's Metro-North region. It includes three hospitals, more than 20 primary care practices, the Cambridge Public Health Department, and the Network Health plan. Through The Cambridge Hospital, which is a teaching affiliate of Harvard Medical School, and its 10 Cambridge-based primary care practices, the Alliance offers comprehensive health services - including 24-hour emergency care, surgery, medical specialties, mental health, and primary care. It accepts most health insurance.

▶ **Cambridge-Based Facilities of Cambridge Health Alliance:****The Cambridge Hospital**

1493 Cambridge Street 617-665-1000

**Riverside Health Center**

205 Western Avenue 617-575-5620

**Cambridge Birth Center**

10 Camelia Avenue 617-665-2229

**Windsor Street Health Center**

119 Windsor Street 617-665-3600

**Cambridge Family Health**

237 Hampshire Street 617-575-5550

**Senior Health Center**

806 Massachusetts Avenue 617-595-5630

**East Cambridge Health Center**

163 Gore Street 617-665-3000

**Cambridge Family Health North**

2067 Massachusetts Avenue 617-575-5570

**Teen Health Center**Cambridge Rindge & Latin  
459 Broadway 617-665-1548**North Cambridge Health Center**

266 Rindge Avenue 617-665-3340

▶ **Cambridge Public Health Department (CPHD)**

119 Windsor Street 617-665-3800

[www.cambridgepublichealth.org](http://www.cambridgepublichealth.org)

Responsible for protecting the health of Cambridge residents, workers and visitors. Services include communicable disease prevention and

control, school nursing, indoor air quality inspections, hazardous waste site review, disaster planning, violence prevention, West Nile virus response, childhood asthma prevention, tobacco control, children's dental health, data analysis, health advocacy, and regulatory enforcement (see City Licensing). CPHD is part of the Cambridge Health Alliance.

▶ **Some CPHD Programs:****Environmental Health Unit**

617-665-3838

Offers air quality investigations to residents, workers and businesses; and addresses concerns about potential toxic exposures. Asthma counseling and home assessments are available to families of children (age 12 or younger) with asthma. Lead poisoning prevention information and home assessments are available to families with children under age 6.

**Public Health Nursing**

617-665-3800

Implements TB clinics, flu clinics, the newborn home visiting program, vaccine distribution, and health education for individuals and businesses.

**Community Health Programs**

617-665-3655

Oversees an early literacy initiative, a walking campaign, and dental screenings in the elementary schools. The division also coordinates a citywide domestic violence prevention program.

▶ **CambridgeSomerville****ResourceGuide.org**[www.CambridgeSomerville](http://www.CambridgeSomerville)**ResourceGuide.org 617-349-6966**

An online guide to health and human service resources. Built through the cooperation of Cambridge Health Alliance, the City of Cambridge, the City of Somerville, and The Agenda for Children, the database covers 26 different service areas, such as legal services, family support, employment services, and immigration services.

▶ **Boston Area Rape Crisis Center**

99 Bishop Allen Drive

617-492-8306 [www.barcc.org](http://www.barcc.org)

The center provides comprehensive sexual assault crisis and prevention services.

▶ **RESPOND, Inc.**

P.O.Box 555, Somerville MA 02143

617-623-5900 [www.respondinc.org](http://www.respondinc.org)

Free domestic violence services, including 24-hr hotline, children's service, and emergency shelter.

▶ **Parks and Forestry Division of Public Works**

617-349-4880

[www.cambridgema.gov/TheWorks](http://www.cambridgema.gov/TheWorks)

Public Works maintains approximately 80 parks, playgrounds and tot lots throughout the city. To download a terrific listing of Cambridge parks and playgrounds, visit: [www.cambridgema.gov/~CDD/cp/parks/osmap.pdf](http://www.cambridgema.gov/~CDD/cp/parks/osmap.pdf)

▶ **Recreation Division of DHSP**

617-349-6200

[www.cambridgema.gov/~DHSP/rec](http://www.cambridgema.gov/~DHSP/rec)

**Reserve a field (athletic use) 617-349-6238**

**Reserve a park (non-athletic) 617-349-4846**

The City of Cambridge also maintains basketball courts, tennis courts, softball, soccer and other athletic fields. Call for information on adult softball and basketball leagues, youth and family recreational programs, pools, special needs camps, afterschool programs, and a summer program.

▶ **Gold Star Pool**

**Berkshire & Cambridge Streets**

617-349-6310

Open July through August.

▶ **War Memorial Pool and Fieldhouse**

Rindge & Latin School, 1640 Cambridge St. 617-349-6237

Offers year-round swimming and recreational opportunities.

▶ **Danehy Park**

99 Sherman Street

617-349-6238

This 55-acre park includes tot lots, water play fountain, picnic areas, soccer and softball fields. Special events include a family and children's concert series, arts & crafts festivals and a kite festival. Permits are required for use of athletic fields.

▶ **Fresh Pond Reservation**

617-349-4793

327 acres located on the western boundary of Cambridge, bordered by Fresh Pond Parkway, Huron Avenue, and Concord Avenue. Fresh Pond has provided drinking water to the City since 1852.

▶ **Thomas P. O'Neill, Jr. Municipal Golf Course**

617-349-6282

[www.cambridgema.gov/~DHSP/rec/golf.html](http://www.cambridgema.gov/~DHSP/rec/golf.html)

A nine-hole course located at 691 Huron Avenue.

▶ **Conservation Commission**

344 Broadway 617-349-4680

[www.cambridgema.gov/~CCC](http://www.cambridgema.gov/~CCC)

The Commission protects and enhances the City's natural resources through regulatory review, planning, advocacy, and education. Also administers Wetlands Protection Act Permits.

**LIBRARIES**

▶ **Libraries 617-349-4040**

[www.cambridgema.gov/~CPL](http://www.cambridgema.gov/~CPL)

Provides access to books, CDs, DVDs, magazines, reference help, children's and adult programs. To obtain a library card, present two pieces of identification, one of which shows your name and local address. In addition to the Cambridge locations, your library card provides borrowing privileges at member libraries of the Minuteman Library Network. Visit [www.mln.lib.ma.us/info/index.htm](http://www.mln.lib.ma.us/info/index.htm) for a listing of member libraries. Internet services provide free access to the World Wide Web.

**Main Library**

359 Broadway 617-349-4040

Call or check the website to confirm location and hours. Mon.-Thurs., 9 a.m. - 9 p.m., Fri. and Sat., 9 a.m. - 5 p.m.

**Library Branch Locations:**

- Boudreau, 245 Concord Avenue 617-349-4017
- Central Square, 45 Pearl Street 617-349-4010
- Collins, 64 Aberdeen Avenue 617-349-4021
- O'Neill, 70 Rindge Avenue 617-349-4023
- O'Connell, 48 Sixth Street 617-349-4019
- Valente, 826 Cambridge Street 617-349-4015

**POST OFFICE**

▶ **Post Office 800-275-8777 [www.usps.com](http://www.usps.com)**

**Main Branch: Central Square, 770 Massachusetts Avenue**

Monday - Friday, 7:30 a.m. - 6:45 p.m., Saturday, 7:30 a.m. - 2 p.m.

**Branch Offices:** Harvard Square, Porter Square, Kendall Square, Inman Square, East Cambridge, and MIT.



**Water Feature in Kendall Square**

▶ **Arts & Historical & Tourism Organizations**

**Cambridge Art Association**  
617-876-0246 [www.cambridgeart.org](http://www.cambridgeart.org)

**Cambridge Arts Council (CAC)**  
617-349-4380 [www.cambridgeartscouncil.org](http://www.cambridgeartscouncil.org)  
For street performer permits, artist grants, exhibition opportunities, public art commissions, and cultural events.

**Cambridge Artists Coop**  
617-868-4434 [www.cambridgeartistscoop.com](http://www.cambridgeartistscoop.com)

**Cambridge Historical Commission**  
617-349-4683 [www.cambridgema.gov/~Historic](http://www.cambridgema.gov/~Historic)  
Administers historic districts and sites, provides technical assistance on historic preservation and maintains a public archive of the City's architectural and social history. Permits are required for renovation/demolition of historic buildings. Financial assistance for rehabilitation is available for eligible low/moderate income homeowners.

**Cambridge Historical Society**  
617-547-4252 [www.cambridgehistory.org](http://www.cambridgehistory.org)

**Cambridge Multicultural Arts Center**  
617-577-1400 [www.cmacusa.org](http://www.cmacusa.org)

**Cambridge Office for Tourism**  
617-441-2884 [www.cambridge-usa.org](http://www.cambridge-usa.org)  
Call for information on dining, entertainment, lodging, shopping, special events, and more.

**New School of Music**  
617-492-8105 [www.cambridgemusic.org](http://www.cambridgemusic.org)

▶ **Museums**

**Arthur M. Sackler Museum, Harvard**  
617-495-9400 [www.artmuseums.harvard.edu/sackler](http://www.artmuseums.harvard.edu/sackler)

**Busch-Reisinger Museum, Harvard**  
617-495-9400 [www.artmuseums.harvard.edu/busch](http://www.artmuseums.harvard.edu/busch)

**Fogg Art Museum, Harvard**  
617-495-9400 [www.artmuseums.harvard.edu/fogg](http://www.artmuseums.harvard.edu/fogg)

**Gray Herbarium, Harvard**  
617-495-2365 [www.huh.harvard.edu](http://www.huh.harvard.edu)

**Harvard Museum of Natural History**  
617-495-3045 [www.hmn.harvard.edu](http://www.hmn.harvard.edu)

**Longfellow National Historic Site**  
617-876-4491 [www.nps.gov/long](http://www.nps.gov/long)

**MIT-List Visual Arts Center**  
617-253-4680 [web.mit.edu/lvac](http://web.mit.edu/lvac)

**MIT Museum**  
617-253-4444 [web.mit.edu/museum](http://web.mit.edu/museum)

**Museum of Comparative Zoology**  
617-495-3045 [www.mcz.harvard.edu](http://www.mcz.harvard.edu)

**Peabody Museum of Archaeology & Ethnology**  
617-496-1027 [www.peabody.harvard.edu](http://www.peabody.harvard.edu)

▶ **Galleries**

**Out of the Blue Art Gallery**  
617-354-5287 [www.outoftheblueartgallery.com](http://www.outoftheblueartgallery.com)  
**Margaret Hutchison Compton Gallery**  
617-253-4444

**Stebbins Gallery** 617-576-0131

**Zeitgeist Gallery**  
617-876-6060 [www.zeitgeist-gallery.org](http://www.zeitgeist-gallery.org)

▶ **Theaters**

**American Repertory Theatre**  
617-547-8300 [www.amrep.org](http://www.amrep.org)

**Brattle Theatre**  
617-876-6837 [www.brattlefilm.org](http://www.brattlefilm.org)

**Hasty Pudding Theatricals**  
617-495-5205 [www.hastypudding.org/new](http://www.hastypudding.org/new)

**Sanders Theatre**  
617-496-2222 [www.fas.harvard.edu/~memhall/sanders.html](http://www.fas.harvard.edu/~memhall/sanders.html)

▶ **Dance Troupes**

**Dance Complex**  
617-547-9363 [www.dancecomplex.org](http://www.dancecomplex.org)

**Snappy Dance Theater**  
617-718-2497 [www.snappydance.com](http://www.snappydance.com)

**Jam'nastics**  
617-354-5780 [www.jamnastics.org](http://www.jamnastics.org)

**José Mateo's Ballet Theatre**  
617-354-7467 [www.ballettheatre.org](http://www.ballettheatre.org)

▶ **Music Venues**

**Passim Folk Music and Cultural Center**  
617-492-7679 [www.passimcenter.org](http://www.passimcenter.org)

**Middle East Club**  
617-864-EAST [www.mideastclub.com](http://www.mideastclub.com)

**Regattabar**  
617-661-5000 [www.regattabarjazz.com](http://www.regattabarjazz.com)

**Scullers Jazz Club**  
617-562-4111 [www.scullersjazz.com](http://www.scullersjazz.com)



Water Feature at Danehy Park

► Cambridge is full of wonderful resources that allow its citizens to help one another. Opportunities abound to volunteer or to receive services offered by this sampling of organizations. As you settle in, consider making volunteering part of your regular routine right from the beginning.

**American Friends Service Committee**

2161 Massachusetts Avenue 617-661-6130 [www.afsc.org](http://www.afsc.org)

**Boston Urban Youth Foundation**

530 Warren, Boston 617-445-3380 [www.buyf.org](http://www.buyf.org)

**Boy Scouts of America**

891 Center Street, Boston 617-723-0007 [www.scouting.org](http://www.scouting.org)

**Bread and Jams Day Shelter**

50 Quincy Street 617-441-3831 [www.breadandjams.org](http://www.breadandjams.org)

**Cambridge Camping Association**

99 Bishop Richard Allen Drive 617-864-0960

**Cambridge Cares About AIDS**

17 Sellers Street 617-661-3040 [www.ccaa.org](http://www.ccaa.org)

**Cambridge Community Center**

5 Callender Street 617-547-6811 [www.cambridgecommunitycenter.org](http://www.cambridgecommunitycenter.org)

**Cambridge Community Services** 99 Bishop Allen Drive

617-876-5214 [www.cambridgecommunity.org](http://www.cambridgecommunity.org)

**Cambridge Economic Opportunity Committee**

11 Inman Street 617-868-2900

**Cambridge Family & Children's Service**

60 Gore Street 617-876-4210 [www.helpfamilies.org](http://www.helpfamilies.org)

**Cambridge Family YMCA**

820 Massachusetts Avenue 617-661-9622 [www.cambymca.org](http://www.cambymca.org)

**Cambridge Senior Volunteer Clearinghouse**

56 Brattle Street 617-864-6688

**Cambridge Visiting Nurse Association** 186 Alewife Brook

Parkway, Suite 300 617-547-2620 [www.vnacarenetwork.org](http://www.vnacarenetwork.org)

**Centro Presente**

54 Essex Street 617-497-9080 [www.cpresente.org](http://www.cpresente.org)

**Charles River Conservancy**

1 Education Street 617-619-2850 [www.charlesriverconservancy.org](http://www.charlesriverconservancy.org)

**Child Care Resource Center, Inc.**

130 Bishop Allen Drive 617-547-1063 [www.ccrinc.org](http://www.ccrinc.org)

**Community Dispute Settlement Center**

60 Gore Street 617-876-5376 [www.communitydispute.org](http://www.communitydispute.org)

**Community Learning Center** 19 Brookline Street

617-349-6363 [www.cambridgema.gov/DHSP2/clc.cfm](http://www.cambridgema.gov/DHSP2/clc.cfm)

**Dante Alighieri Italian Cultural Society**

41 Hampshire Street 617-876-5160

**Educators for Social Responsibility**

23 Garden Street 617-492-1764

[www.esrnational.org](http://www.esrnational.org)

**Friends of Fresh Pond Reservation**

250 Fresh Pond Parkway 617-349-4793

[www.friendsoffreshpond.org](http://www.friendsoffreshpond.org)

**HomeStart, Inc.**

678 Massachusetts Avenue, Suite 502

617-234-5340 [www.homestart.org](http://www.homestart.org)

**Just-A-Start Landlord Service**

432 Columbia Street 617-494-0444

**Massachusetts Alliance of Portuguese Speakers** 1046 Cambridge Street

617-864-7600 [www.maps-inc.org](http://www.maps-inc.org)

**Mount Auburn Hospital Volunteer Svcs.**

330 Mount Auburn Street 617-499-5016

**On the Rise** 341 Broadway

617-497-7968 [www.ontherise.org](http://www.ontherise.org)

**Physicians for Social Responsibility**

11 Garden Street 617-497-7440 [psr.igc.org](http://psr.igc.org)

**St. James' Episcopal Church Food Pantry and Meal Program**

1991 Massachusetts Avenue 617-876-4381

**Salvation Army Shelter and Meals Program**

402 Massachusetts Avenue 617-547-3400

**Somerville-Cambridge Elder Services**

61 Medford Street, Somerville

617-628-2601 [www.eldercare.org](http://www.eldercare.org)

**Spare Change** 1151 Massachusetts Avenue

617-497-1595 [www.homelessempowerment.org](http://www.homelessempowerment.org)

**Summerbridge Cambridge**

225 Windsor Street 617-349-6647

[www.summerbridgecambridge.org](http://www.summerbridgecambridge.org)

**Wellmet Project**

675 Massachusetts Avenue 617-491-2377

[www.wellmetproject.com](http://www.wellmetproject.com)

**Willis Moore Youth Center**

12 Gilmore Street 617-349-6273

[www.cambridgema.gov/dhsp2/moore.cfm](http://www.cambridgema.gov/dhsp2/moore.cfm)

**YouthBuild USA**

58 Day Street, Somerville 617-623-9900

[www.youthbuild.org](http://www.youthbuild.org)

▶ Cambridge is city full of vitality and flair, and that is never more evident than in our many events. Here is a sampling of some upcoming Cambridge happenings.

## September

**ArtsCentral in Central Square** 9/18  
Central Square Business Association 617-864-3211

www.centralsquarecambridge.com/artscentral  
An art-infused weekend with over 100 local artists and performers. Supported by area businesses, musicians, dancers, artists, chefs, tour guides, and theatrical groups will join together to celebrate Central Square's vibrant and diverse artistic community.

**Museums Community Day** 9/18  
Harvard University www.community.harvard.edu  
Harvard University offers free admittance to all six museums and provides special offers, events, and tours from 1 – 5 p.m. See page 28 for a listing of the museums and contact information for each.

**Riversing** 9/22  
The Charles River Conservancy crc@thecharles.org  
Revels info@revels.org

Celebrate the first day of fall by gathering on the banks of the Charles River (upriver from the Weeks Footbridge). At 6:30 p.m., the communities of Boston and Cambridge are invited to gather along the riverbanks and sing across the water to each other as the sun sets.

**CCTV's 8th Annual Backstage Barbecue** 9/22  
Cambridge Community Television 617-661-6900  
www.cctvcambridge.org

A night of food, music, and fun to support CCTV's outreach programs and to honor Susan Flannery, the Director of the Cambridge Public Library. The event will be held at CCTV, 675 Massachusetts Avenue: 5:30 – 8:30 p.m.

**10th Annual Danehy Park Family Day** 9/24  
City of Cambridge (Maryellen Carvello) 617-349-4301

A free day of amusement rides, crafts, music, food, and more! See the sidebar for more information on this day of fun for the whole family. Danehy Park (North Cambridge at Sherman, Garden, and New Streets): 11 a.m. – 4 p.m.

## October

**City Sprouts Harvest Festival** 10/1  
City Sprouts 617-491-0258  
www.citysprouts.org

Celebrate children's gardening, good food, and environmental awareness at the King Open School from 11 a.m. – 3 p.m.

**Cambridgeport Artists Open Studios** 10/1 – 10/2  
CAOS 617-547-5513  
www.caosonline.org

Annual open studios event features artists and performers throughout Cambridgeport from 12 – 6 p.m. A self-guided map is available for pickup at various Central Square locations.

**Oktoberfest** 10/2  
Harvard Square Business Association 617-491-3434  
www.harvardsquare.com

Offering live music, entertainment, and a variety of ethnic food and crafts from around the world. Harvard Square: 12 – 6 p.m.

### 10<sup>TH</sup> ANNUAL DANEHY PARK FAMILY DAY 9/24

This 10th annual celebration will be packed to the brim with family fun and entertainment including roving performers, amusement rides, music, kites galore, arts & crafts, prize giveaways, free food & drink (while supplies last), and a children's stage. Featured events include a street theater performance and an energy adventure tent. For more information, contact Maryellen Carvello at 617-349-4301.



### HEAD OF THE CHARLES REGATTA 10/22 – 10/23

Come see the world's largest 2-day regatta and watch racers from all over the world compete. The race takes place along the Charles River, beginning at the Boston University Bridge and ending at the Elliot Bridge. In addition to the racing, attractions include the Rowing & Fitness Expo tent, the Row-a-Palooza concert on the Cambridge side of the Weeks footbridge, and a wide array of food courtesy of vendors clustered near the Weld Boathouse.



### HOLLY FAIR 12/10 – 12/11

Holly Fair in Harvard Square is the oldest craft fair in Cambridge.

Among the crafts offered by local artists are glittering ornaments, handmade cards and clothing, finely crafted jewelry, stocking stuffers, and much more. Hosted at the Cambridge Center for Adult Education at 42 and 56 Brattle Street, Holly Fair benefits the CCAE's scholarship fund. Call 617-547-6789 for more information.



Subscribe today...

[www.cambridgema.gov/eline](http://www.cambridgema.gov/eline)

- **Weekly City Newsletter**  
links to news including construction updates, job openings, and events
- **Alerts**  
including street cleaning, school closings, public safety alerts, and snow emergency parking bans
- **City Publications**  
including newsletters, brochures, and class catalogs

*Connect  
to  
Cambridge*

*e* **Cambridge** *ma.gov*

Living Working Visiting

## Head of the Charles Regatta

[www.hocr.org](http://www.hocr.org)

10/22 – 10/23

617-868-6200

Come see the world's largest 2-day regatta and watch racers from all over the world compete. The race takes place along the Charles River, beginning at the Boston University Bridge and ending at the Elliot Bridge.

## November

### Annual Peace and Justice Awards Evening

11/1

Cambridge Peace Commission

617-349-4694

[peace@cambridgema.gov](mailto:peace@cambridgema.gov)

An awards evening (6 – 9 p.m.) featuring Jimmy Tingle, honoring more than 14 individuals who make Cambridge a more peaceable city and paying tribute to Mark Levine, Gene Michaud, and Peggy Schirmer.

### 2005 Municipal Election

11/8

Cambridge Election Commission

617-349-4361

[www.cambridgema.gov/~Election](http://www.cambridgema.gov/~Election)

Municipal Elections will be held on Tuesday, November 8. The deadline to register to vote is Wednesday, October 19. Call or visit the Election Commission for registration, polling locations, and absentee ballots.

### Veterans' Day Observance

11/11

Veterans' Services

617-349-4764

[www.cambridgema.gov/veterans](http://www.cambridgema.gov/veterans)

Join us in the Cambridge Cemetery at 11 a.m. as we gather to honor our veterans, past and present, for their service to our country.

## December

### Holly Fair

12/10 – 12/11

Cambridge Center for Adult Education

617-547-6789

[www.ccae.org](http://www.ccae.org)

Annual craft fair showcasing the work of local artists and benefitting the Cambridge Center for Adult Education's scholarship fund.

### Sparklefest

December, various dates

Harvard Square Business Association

617-491-3434

[www.harvardsquare.com](http://www.harvardsquare.com)

Holiday lights, carolers, Santa appearances, and store events bring Harvard Square alive with the spirit of the holidays. Visit the Harvard Square Business Association Web site for specific dates and events.

## Additional Events

### Cambridge Office for Tourism

[www.cambridge-usa.org](http://www.cambridge-usa.org)

617-441-2884

For detailed information on Cambridge events, contact the Cambridge Office for Tourism or visit their Web site.

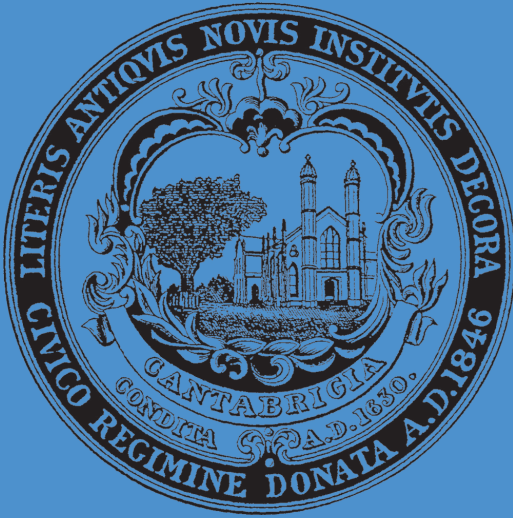
## CITY SCHOLARSHIP FUND

The City Scholarship Fund, administered by the City of Cambridge Finance Department, provides financial assistance opportunities for eligible Cambridge residents wishing to pursue post secondary education. Each year, the City awards 20-30 scholarships of approximately \$2,500 each, supported by donations from Cambridge residents and businesses.

To learn more about this opportunity,  
call 617-349-4220 or visit

[www.cambridgema.gov/dept/finance.html](http://www.cambridgema.gov/dept/finance.html)

# The Cambridge Life



■ City of Cambridge  
795 Massachusetts Avenue  
Cambridge, MA 02139  
[www.cambridgema.gov](http://www.cambridgema.gov)  
617.349.4000  
617.349.4242 TTY

*City Manager* **Robert W. Healy**

*Deputy City Manager* **Richard C. Rossi**

## City Council

Mayor Michael A. Sullivan

Vice Mayor Marjorie C. Decker

Councillor Henrietta Davis

Councillor Anthony D. Galluccio

Councillor David P. Maher

Councillor Brian Murphy

Councillor Kenneth E. Reeves

Councillor E. Denise Simmons

Councillor Timothy J. Toomey, Jr.