

FREE

The Cambridge

SPRING 2011 - SPRING 2012

Life

Annual Magazine
& Resource Guide

Brought to you by the City of Cambridge

celebrate

CRLS



Also in this issue: Award Winning City Buildings
Cambridge Police & You | Falls Prevention | Happier, Healthier Kids
40 Years with the CLC | Public Works: What's New
The CDD: Building Vitality in Cambridge

MESSAGE FROM THE CITY MANAGER

We hope you will enjoy the 2011–2012 edition of *The Cambridge Life Magazine & City Resource Guide*.

This latest issue highlights four award winning City buildings, all of which have earned LEED® Silver certification by the U.S. Green Building Council and verified by the Green Building Certification Institute. LEED is the nation's preeminent program for the design, construction and operation of high performance green buildings. Our cover story features the Celebrate CRLS Committee, which will launch a yearlong celebration in September to mark the completion of the Cambridge Rindge & Latin School campus renovation.

The Public Works Department recently launched a newly redesigned, more user-friendly Website filled with information and resources regarding a variety of basic and important City services. In this issue, you will also learn more about the various citywide improvements made by our Community Development Department and the various ways citizens can stay connected to the Cambridge Police Department. This year, the Community Learning Center is celebrating its 40th anniversary of providing adult basic education programming, college prep and citizenship classes in Cambridge. Because falls are the leading cause of injury-related deaths among older adults, the Council on Aging has included a helpful article on Falls Prevention in this issue. And finally, the Cambridge Public Health Department addresses the issue of childhood obesity and highlights the important local initiatives aimed at alleviating the problem.



NortonPhotography.com

Robert W. Healy
City Manager

The Cambridge Life also serves as an A to Z resource guide of City programs and services, including numbers and Websites for more information. As always, we encourage you to visit our Website, www.cambridgema.gov for the latest City news and information.

Sincerely,

A handwritten signature in blue ink, which appears to read "Robert W. Healy". The signature is fluid and cursive.

Robert W. Healy
City Manager



SPRING 2011 - SPRING 2012



4



5



7



9



12

Photos above: Celebrate CRLS Logo by Desmun Velez; Mayor Sheila Doyle Russell West Cambridge Youth and Community Center (Arthur Kwesi); Run 'N' Ride kids' duathlon at the CambridgeSide Galleria (Mark Thomson); Building computer skills at the Community Learning Center; The Lechmere Canal offers a beautiful water view.

Cover photos: Cover collage features CRLS students in action. Top center image: Dr. Phillip Allen Sharp, Noble Laureate and Co-Founder of Biogen Idec, visits CRLS as a guest lecturer. Cover photos by Larry Aaronson.

2 Message from the City Manager

3 Table of Contents

FEATURES

4 Celebrate CRLS

Commemorating the past while celebrating the present and future of Cambridge Rindge and Latin School (CRLS)

5 Award-Winning Buildings

4 City Buildings earn LEED® awards

6 Cambridge Police and You

CPD's newest communication tools

7 Happier, Healthier Kids

Cambridge Public School kids are eating - and liking! - broccoli

8 Falls Prevention

A coalition of agencies help seniors avoid potentially dangerous falls

9 Community Learning Ctr

Celebrating 40 years of service

10 Public Works

Learn what's new at The Works

12 Community Development

Building vitality in Cambridge

REFERENCE

14 For New City Residents

At-a-glance info. on moving van permits, voter registration and more

14 Utilities Cable, Electricity/Gas, Sewer, Telephone and Water

15 Cambridge City Government

Contact Info. for City Hall, City Manager, City Council and the Mayor

15 Useful Phone Numbers

City Info. Lines and Departments

16 Cambridge Structure

Organizational Chart, Political System, City Ordinances

17 Voting

17 Rights and Resources

18 Certificates, Licenses, Permits & Taxes

19 Traffic, Parking, and Transportation

Resident Parking Permits, Snow Emergencies and Moving Van Permits

19 Public Works Street Cleaning, Trash Collection and Recycling

20 Community Development

Neighborhood Planning, Environment and Housing

20 Business Resources

21 Human Services

22 Children, Youth and Family Services

23 Schools

24 Health

25 Public Safety Hospitals, Cambridge Health Alliance Services

25 Parks, Recreation and Conservation

26 Libraries

27 Public Transportation

27 Registry of Motor Vehicles

27 Transportation Resources

27 Post Office

28 Cambridge Culture

Arts and History, Museums, Galleries, Theaters and Community TV

29 Community Organizations

Services, Volunteer Opportunities

30-31 Cambridge Event

Editor

Ini Tomeu

Public Information Officer,

City of Cambridge

617-349-4339

itomeu@cambridgema.gov

Publisher

Lucie Stites, Avrio Publishing

lucie@avriopublishing.com

The Cambridge Life

is published for the

City of Cambridge

by Avrio Publishing

www.avriopublishing.com

The Cambridge Life is a free publication brought to you by the Office of the City Manager. It is published annually in May. Avrio Publishing verifies the accuracy of the information provided to the best of the publisher's ability. Avrio Publishing and the City of Cambridge assume no liability for loss or damage, errors or omissions. No part of this publication may be reprinted without written permission. © 2011 Avrio Publishing

Celebrate CRLS!

Opportunity, Diversity, Respect



CRLS Digital Photography students utilizing state-of-the-art technology. (Larry Aaronson)

charged with commemorating the past, present and future of Cambridge Rindge and Latin School (CRLS). In September 2011, the group will launch a yearlong celebration to mark the completion of the CRLS campus renovation, which also included the completed and renovated Cambridge War Memorial Recreation Center and Cambridge Public Library, both award winning green, municipal buildings.

COMING TOGETHER

Celebrate CRLS is an initiative designed to involve and engage the support of all constituencies—parents, students, staff, alumni, science and biotech and other local institutions, as well as the general community, in an extended and dynamic celebration of the school and its achievements.

“This celebration is not just about the building or about the creation of a sensational campus,” said former Mayor and City Councillor Frank H. Duehay, who chairs the 50-member committee. “It’s about the people... the people who learn in, teach at, went to and come to Cambridge Rindge and Latin School.”

STELLAR STATS

CRLS is the second oldest public high school in the U.S. and was ranked 16th in 2009 of 161 schools profiled by *Boston Magazine* and Babson College. It was ranked first in that year for its arts programs. The graduation rate is over 97%, with a college acceptance rate of 89%.

CRLS offers an outstanding occupational curriculum in the Rindge School of Technical Arts, as well as a broad range of Advanced Placement, college preparatory and honors classes. It also supports over 30 clubs and extracurricular activities. Opportunity, Diversity, Respect is a major part of the School’s Mission.

STELLAR STATS

The *Celebrate CRLS* committee feels that Cambridge is in a unique position (at a time when many communities face reductions in educational funding) to demonstrate its commitment to a diverse, dynamic and high performing public high school.

“This is a once in a generation opportunity to connect the many aspects of Cambridge’s only public high school to both its past and to the school’s place in the future of our city,” said Duehay.

Celebrate CRLS!

That is the overriding goal of a new citywide committee

THE CRLS COMMUNITY

The year-long event to celebrate the school intends to support and enhance the perception of CRLS by alumni, parents, local institutions and the community. The committee believes that this experience can alter and enhance these groups’ long-term relationship with the school.

Activities will honor current and former students and staff, welcome alumni for both social and supportive events, recognize the critical role that parents play in school life, and invite the Cambridge community into the school for an “up close and personal” introduction to CRLS.

EXPANDING THE COMMUNITY

The committee hopes that the process will “energize the entire Cambridge community,” including the business, academic and non-profit sectors, to support the high school.

LEARN MORE

For more information, including volunteer opportunities and an event calendar, visit www.celebratecrls.org. Also visit them on Facebook. The group can be reached at celebratecrls@celebratecrls.org, or by calling Ruby Pierce Donohue at 617-492-4712. ■



RSTA (Rindge School of Technical Arts) Culinary Arts student Angel De Jesus baking cookies. (Ini Tomeu)

AWARD WINNING CITY BUILDINGS



Photo Credits (l to r): Robert W. Healy Public Safety Facility and Cambridge Public Library by Bob Coe; Cambridge War Memorial Recreation Center by Anton Grasso-Esto; Mayor Sheila Doyle Russell West Cambridge Youth and Community Center by Arthur Kwesi.

The City of Cambridge is proud to announce that four recently renovated or reconstructed municipal buildings have earned LEED® Silver certification by the U.S. Green Building Council and verified by the Green Building Certification Institute. LEED® is the nation's preeminent program for the design, construction and operation of high performance green

buildings. The award winning buildings include the Mayor Sheila Doyle Russell West Cambridge Youth and Community Center (bottom right), the Cambridge War Memorial Recreation Center (bottom left), the Robert W. Healy Public Safety Facility (top left) and the Cambridge Public Library (top right). As of January 2011, Cambridge Public Library had received 11 awards, the most recent being a Citation from the 2010 Sustainable Buildings Industry Council's Beyond Green High-Performance Building Awards program. The project was recognized specifically for its "Innovative Envelope System." The Library also received the 2010 Harleston Parker Medal for the "Single Most Beautiful Building" built in the metropolitan Boston area in the past 10 years, from the Boston Society of Architects. ■

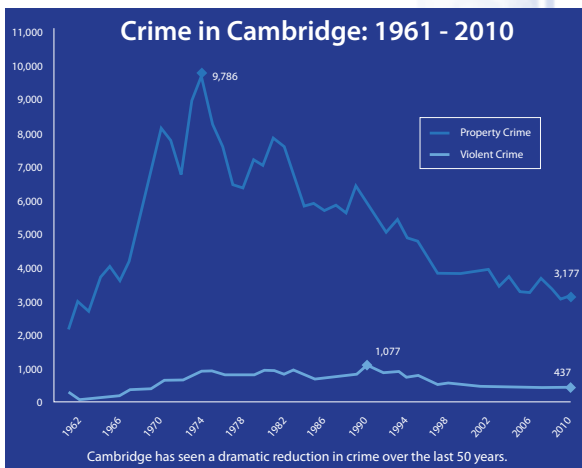
The Cambridge Police Department Wants to COMMUNICATE WITH YOU

One of the greatest challenges any public safety organization faces is communicating timely, accurate and relevant information to citizens while also being responsive to feedback and receptive to concerns.

The Cambridge Police Department (CPD) recognizes this need and has been working to institute new communications tools for citizens to receive information from, as well as share information with, police.

MONTHLY UPDATES FROM BRIDGESTAT

In an effort to better communicate crime data and trends to Cambridge residents, CPD has developed a program known as **BridgeStat**. BridgeStat is released monthly on the first Friday of every month and contains information about crime in Cambridge as well as what police are doing to combat that crime and what citizens can do to help avoid becoming victims of crime. BridgeStat can be accessed at www.CambridgePolice.org/publications/BridgeStat.cfm.



CITIZEN OBSERVER - A TOOL FOR TIPS AND ALERTS

One very important tool that Cambridge Police Department uses to communicate information to residents in a timely manner is **Citizen Observer**. Citizen Observer is a web-based service that allows public safety organizations to send alerts to residents who have subscribed to the service. **Citizen Alerts** are sent from CPD whenever a noteworthy event occurs in a neighborhood and/or when an incident occurs in the community that police feel poses an ongoing threat to public safety.

Residents are encouraged to sign up to receive Citizen Alerts via the CITYWIDE option as well as for their respective neighborhood by visiting www.citizenobserver.com and clicking on "Sign Up For Alerts." You can choose to receive alerts via e-mail, text message or both.

Another service offered through Citizen Observer is **Anonymous**

Text-a-Tip, which allows residents to communicate information directly to Cambridge Police from their cell phones if they witness a crime or suspicious activity occurring. To do this, send an anonymous text message to Tip411 (847411). Begin your message with Tip650 and then type your message. You will receive a response from Cambridge Police with the option to continue communicating.

SOCIAL MEDIA

CPD also recognizes the importance of social media and recently launched a presence on Twitter and Facebook as another means of communicating information to the public.

To get daily updates, follow CPD on Twitter at www.twitter.com/CambridgePolice as well as "Like" CPD on Facebook at www.facebook.com/CambridgePolice.



9-1-1 & OTHER IMPORTANT INFORMATION

While these new methods of communication are great for sharing information and engaging citizens, CPD would like to remind residents that these tools are no substitute for the traditional ways of reporting crimes.

If you need immediate police assistance, or if you witness a crime or emergency situation, please dial 9-1-1 immediately.

As always, please visit the Cambridge Police Department's Website at www.CambridgePolice.org for other news, information and resources for citizens. ■

ON OUR WAY TO HAPPIER, HEALTHIER KIDS

Contrary to popular belief, school kids *do* like broccoli. It turns out they just like to be asked! Since 2006, Cambridge Public School (CPS) students have gotten to “vote” on new cafeteria fare—like broccoli slaw and vegetarian chili—that are made from fresh and often locally grown ingredients.

“Before we put something new on the menu, we always ask kids for their approval,” said Cambridge Public Health Department school nutritionist Dawn Olcott, who works closely with the CPS Food Service Department and a local chef to make healthy foods a staple on cafeteria menus.

ADDRESSING A NATIONAL AND LOCAL PROBLEM

Today, about 34% of Cambridge school children (age 5 to 14) are either overweight or obese, reflecting a national problem: nearly one in three children in America is overweight or obese. As they get older, these children are at greater risk for developing type 2 diabetes, heart disease and other serious conditions.

Getting kids excited about fruits and vegetables through taste tests, cooking classes and school gardens is among the many lessons learned during a decade-long citywide effort to curb the childhood obesity epidemic in Cambridge.

THE GOOD NEWS

The good news is that the slow, steady rise in obesity among the city’s public school children started to improve in the mid-2000s. Based on data collected between 2004 and 2007, the proportion of Cambridge public school children in grades K–8 who were healthy weight increased by 11% overall, and 40% of children who were obese moved down into the overweight category.

TAKING A LEAD ROLE

Cambridge is one of the first U.S. cities to collect and analyze height, weight and fitness data on its public school students. School nurses and PE teachers are at the forefront of the effort, ensuring that families receive an annual “health and fitness progress report” on their child.

While the “Cambridge approach” to healthy weight is grounded in science, it has a distinct grassroots appeal. The inspiration and leadership for

by Suzy Feinberg,
Cambridge Public Health Department

the City’s programs and policies around healthy weight have come from many corners of the community, including parents and teachers.

Meanwhile, City leaders have increased the number of farmers’ markets and created safer streets for pedestrians and cyclists. A recently convened Food and Fitness Policy Council is providing input into how Cambridge can improve residents’ access to affordable, healthy foods and fitness opportunities.



Run ‘N’ Ride kids’ duathlon at the CambridgeSide Galleria (Mark Thomson).



Appetizing fare in the Cambridge Rindge and Latin School cafeteria includes locally grown seasonal ingredients (Dawn Olcott).

KEEP IT MOVING

In February 2011, Cambridge officially signed on to First Lady Michelle Obama’s Let’s Move campaign to solve the problem of childhood obesity within a generation.

In a national news release celebrating the first anniversary of Let’s Move, Mrs. Obama stated: “Communities across the country, like Cambridge, are implementing creative solutions to ending childhood obesity. Together, we’re making a real difference in the lives of children and today

there’s a real sense of hope that we can end childhood obesity.” ■

Falls Prevention

Work in the Cambridge Senior Community

The National Safety Council reports that in 2007, more than 21,700 Americans died as a result of falls and more than 7.9 million were injured by a fall, including over 1.8 million older adults who had a fall-related injury that resulted in an emergency room visit. Falls are the leading cause of injury-related deaths among older adults 73 and older and the second leading cause of death from ages 60-72.

Partnering with the Cambridge Health Alliance, Somerville Cambridge Elder Services and the Visiting Nurse Association of Eastern Massachusetts, the Cambridge Council on Aging is working with seniors in the community to create greater awareness about steps they can take to help prevent falls.

FALLS PREVENTION GOALS

- Increase awareness of some of the common causes of falls
- Highlight ways to make one's home environment safer
- Remind seniors that if they've fallen, they should report it to their primary care provider.

In addition to hazards in the home (scatter rugs, electrical cords that may trip you up), falls also can be a medication-related problem. If someone is taking several medications (including prescription and over-the-counter drugs), those drugs can interfere with one another and this may change the intended effect of the drug on one's body. The interaction of some foods and alcohol can have the same effect. These physical changes may result in a fall.

Changes in vision are also a factor, so regular eye check-ups are important if falls are occurring.

FALL PREVENTION SESSIONS

Community sessions include presentations on a variety of important fall prevention topics by a physician who specializes in geriatric services and a pharmacist. Staff also works individually with each senior to do a quick assessment - called "Get Up and Go"- to determine the individual's potential risk for falling.

WHAT SUPPORTS ARE AVAILABLE TO HELP?

A Matter of Balance is an award-winning program designed to manage falls and increase activity levels. This program, which meets once a week for 8 weeks in various community settings, is free of charge. Transportation to the class is available.

Who Should Sign Up for A Matter of Balance? Anyone who:

- has fallen in the past
- has not fallen but is concerned about falls, and also may be restricting activity due to this fear
- is interested in improving balance, flexibility and strength

EXERCISE, STRETCH, MOVEMENT AND RELAXATION

A variety of classes are offered at the City's Senior Centers for age 60-plus. These include traditional Yoga, Chair Yoga, Tai Chi and a simplified Yoga class with attention to Breathing. Classes meet weekly and have a nominal fee (\$2-\$3 per session).

For more information about the Senior Center classes, contact the Cambridge Citywide Senior Center, 806 Mass. Ave. 617-349-6060 and the North Cambridge Senior Center, 2050 Mass Ave. 617-349-6320.

For information about A Matter of Balance or other sessions on Falls Prevention, contact Eliza Wiesner, Somerville-Cambridge Elder Services at 617-628-2601, ext. 3108. ■



Community Learning Center Celebrates 40th Anniversary

The Community Learning Center (CLC), the adult basic education program of the City of Cambridge, celebrates its 40th anniversary this year. When the CLC opened in 1971, it was a small neighborhood program with federal Model Cities funding. The full-time staff of three and 10 part-time teachers provided around 10 adult basic education classes. In the early years, most of the immigrant students were from Portugal or Italy.

RAPID GROWTH

The CLC grew rapidly and in 1981 became a division of the City's Department of Human Service Programs. Today, there are 22 full-time and 44 part-time staff, plus 45 volunteers. Approximately 1,000 students enroll each year with the goals of earning a high school diploma, learning English, helping their children succeed in school, becoming a citizen, going to college, or getting a job or a promotion. Reflecting the changing Cambridge demographics, CLC students currently represent 70 different countries with Haitian, Ethiopian, Latin American, Brazilian and Chinese students topping the list. The need for English classes for immigrants has dramatically increased, with waiting lists exceeding 550. In addition to the core classes, CLC provides a transition to college program for students who have earned a high school diploma, workplace education at three Cambridge hospitals, citizenship classes,

"I am moving towards having a better life, getting an education, having dreams and pursuing them."

A CLC Student

computer classes, job readiness services and family literacy activities.

AT THE CORE

The mission and core values of the CLC have always remained consistent, with an emphasis on collaboration and group decision making among staff and with other community agencies, respect for students' voices in the program, and development of intercultural understanding. The CLC is known for its student leadership programs which train adult students and community members to work as community outreach workers, literacy ambassadors or job mentors.

CAUSE FOR CELEBRATION

To celebrate its 40th anniversary, the CLC is engaging in a number of activities this year. These include an exhibit of CLC staff and student art work at Cambridge Open Studios; an essay contest; creation of an alumni association; involvement in the Story Trade project; a garden party fundraiser for the Bridge to College program in June; and a culminating cultural event in October. Currently located at 19 Brookline Street, the CLC looks forward to eventually moving into its future home at the site of the former police station in Central Square.

LEARN MORE

For more information, visit www.cambridgema.gov, then click City Departments > Human Service Programs > Community Learning Center. For stories of CLC students and graduates, plus news about upcoming events, visit www.friendsofclc.org. If you are interested in volunteering as a tutor or classroom aide, call 617-349-6363. ■



Learning English, civics and computer skills at the Community Learning Center.

WHAT'S NEW IN THE DEPARTMENT OF PUBLIC WORKS

A NEW, MORE USER-FRIENDLY WEBSITE

Find Information

In late 2010, the Cambridge Department of Public Works launched a new and improved Website featuring more (and better organized) information and resources. Find out all you need to know about:

- Trash and Recycling
- Green Living
- City Projects
- Street Cleaning
- News and Events
- and more
- Urban Forestry
- Permits and Documents

Report an Issue / Make a Request

A new sidebar feature called “How can we help you” makes it easier to report an issue (such as a pothole or graffiti) or to request a service or information.

Stay Up to Date

The “City Projects” Web page is another improved feature that provides details on public construction projects ranging from large-scale sewer

separation projects to smaller surface enhancement projects. The City Projects page lists current and future construction, and includes background information, recent updates, contract documents and specifications, photos and schedules. Interested in public hearings or community meetings and events? Check the City Calendar on the main City Web page for an up to date listing of events.

Keep in Touch

The new Website makes it easier than ever to contact Public Works, and we want to hear from you! Please spend a few moments on our new site, then give us your feedback on how to serve you better. We hope you'll take advantage of this easy-to-use and information-packed resource.

www.cambridgema.gov/theworks

WWW.CAMBRIDGEMA.GOV/THEWORKS TAKE A TOUR



CALLING ALL YOUNG TREE LOVERS!

Do you know a budding tree enthusiast who might be interested in improving the life of a young tree near their home or school? If so, Public Works' new Junior Forester Program needs their help.

The City owns over 15,000 trees, and trees help make Cambridge a beautiful and healthy place to live. The first few years of a newly planted tree are the most important. Here's how the Junior Foresters will help:

- Weed: Pull weeds and remove trash in the tree well
- Water: Fill a gator bag, which will be provided, when the bag is empty (about once per week)
- Mulch: Around the base of the tree to help keep the soil cool

This program is open to all interested local youth ages 5-13. Participants will receive:

- A Gator bag (with watering instructions)
- Hanger to put on the tree with an official Junior Forester seal
- Certificate of completion and an official badge

If you or someone you know is interested in this new program, please contact Ellen Coppinger at Public Works at 617-349-6949 or ecoppinger@cambridgema.gov, or visit www.cambridgema.gov/theworks and click on "Urban Forestry."



SINGLE STREAM RECYCLING STARTS STRONG

In October 2010, the City transitioned to single stream recycling, where paper and different types of containers are collected from the same toter. In just the first 6 months of the program, the impact has been fantastic – residents have increased their tons recycled by 10% and decreased the tons disposed by 6%.

You can also recycle empty pizza boxes, empty paper cups, frozen food boxes, potato chip/nut cans, and large plastic items such as buckets, laundry baskets and toys. To help ensure high quality, please keep the following materials out of your recycling: no trash, no plastic bags, no Styrofoam and no food waste.

To request toters, posters, stickers or brochures (available in 6 languages) please email recycle@cambridgema.gov or call Public Works at 617-349-4800. If you have extra blue recycling bins you no longer use, drop them off at Public Works during business hours or when the Recycling Center is open (Tues/Thurs 4 - 7:30 p.m. and Sat 9 a.m. - 4 p.m.).

Recycling and waste prevention reduces disposal costs, creates jobs, protects the environment and curbs climate change.

Please visit us at www.cambridgema.gov/theworks for additional information on single stream and other recycling programs.

As always, we thank you for recycling. ■



Photos: Left: Newly planted tree that could use your help; Right: A single stream toter emptying into a new recycling truck.

Community Development

PUBLIC/PRIVATE PARTNERSHIP TO REDUCE CONGESTION

One way that the City of Cambridge both supports local business and enhances livability is to help employers make it convenient for employees to leave their cars at home. People who work in Cambridge often find walking, biking, carpooling or using public transit to be more desirable choices than driving alone to work. Many employers subsidize MBTA passes, provide secure, weather-protected bicycle parking, or offer financial benefits for walkers and cyclists. The City staff assists employers with development of effective transportation programs.

Cambridge makes walking, biking and transit easy and safe; traffic calming, bicycle facilities, and bike- and pedestrian-friendly intersection design and signal timing are part of the City's transportation planning. As a result, about 65% of our residents commute by means other than driving, significantly reducing traffic congestion and air pollution.

Varied options for getting to work are a strong selling point for employee recruitment and help maintain Cambridge's leadership position in the innovation business sector as well as in environmental sustainability. Non-auto commuting is generally less stressful and provides exercise, leading to a healthier workforce and to better public health for the entire city.

WALKING TOWARD GOOD HEALTH

With growing evidence that regular walking yields multiple health benefits, Cambridge is ahead of the curve. Residents of all ages have made walking part of their daily life, giving us the second highest walk-to-work rate in the country. Cambridge's transportation and land use planning practices improve conditions for pedestrians. City policies encourage a



Covered bicycle parking at Harvard Law School (left); Cambridge's human-scale streets encourage walking.

Building Vitality

mix of uses, and streetscape improvements provide amenities that make walking pleasant—curb extensions that slow traffic and facilitate crossing; traffic signals that minimize pedestrians' wait at the curb; an aggressive sidewalk snow clearance policy; and thriving street trees and plantings throughout the city. Named recently as America's most walkable city by *Prevention* magazine, Cambridge provides a path to good health.

AFFORDABLE HOUSING FOR RENTERS & FIRST TIME BUYERS

The Community Development Department's Housing Division offers easy access to City-assisted affordable rental and first-time homebuyer units.

The Division works with private owners to make available affordable rental units developed under the City's Inclusionary Zoning Ordinance. With more than 460 inclusionary units created in mixed-income buildings throughout the city, these units are an important component of Cambridge's affordable housing stock. Residents can apply to the

Inclusionary Rental Applicant Pool at any time to be matched with units as they become available.

The Housing Division also manages the City's stock of affordable homeownership units, operating a similar pool for potential first-time buyers. Through the Homeownership Resale Pool, applicants are matched with available units located citywide, including those built recently by both non-profit and private developers that feature renewable energy and other sustainable design



components. **For more information:** www.cambridgema.gov/cdd/hsg.

CITY SUPPORTS SMALL BUSINESS DEVELOPMENT AND FINANCIAL LITERACY

Small businesses are critical to the character of Cambridge. They foster community, support neighborhood vitality, and diversify the local economy.

The Community Development Department's Economic Development Division (EDD) offers a range of services to help locally owned businesses and aspiring entrepreneurs start or grow their retail- and service-based businesses. The Business Development program includes workshops such as "Steps to Starting a Business" and "E-Commerce – Building a Web Presence." Offered throughout the year, workshops address all aspects of small business operation.

The City also offers a Financial Literacy program to help residents manage their

personal budgets and credit to start a business, buy a first home or save for a large investment. Since 2007, over 400 residents and business owners participated in Financial Literacy and Business Development workshops.

EDD provides one-on-one counseling to those needing help with business plans, marketing, or other elements of running a business. With support targeted to their needs, EDD clients attained their goals: residents bought homes, new businesses opened and existing businesses strengthened operations. **For more information:** www.cambridgema.gov/business.

RECONNECTING TO THE CHARLES RIVER

The Charles River provides one of the most significant and cherished open spaces in Cambridge, and the Community Development Department (CDD) has been studying ways to enhance its use. The evolution of the riverfront from tidal swamp to its current urban form brought city residents closer to the water, providing a dramatic panorama and opportunities for recreation. The CDD study looks at the Charles from the perspective of a wide variety of people (residential neighbors, students, office workers, visitors, etc.) who want to move easily from locations throughout Cambridge to the river. Whether reading at the water's edge, walking with friends, or enjoying a family picnic, people like to savor the many pleasures of the open riverfront vistas.

The design of Cambridge's built environment – university buildings, hotels, offices, housing, retail – influences how people get to the river and how they use it. While much of the land along the Charles is not directly controlled by the City of Cambridge, the study articulates a vision for the riverfront that will serve as a planning guide. With a focus on implementing change as opportunities arise, the underlying goal is to expand access to the riverfront through improved streetscape connections to the rest of the city and abundant recreational options. ■



The Charles River study explores recreational opportunities along the water's edge.

REFERENCE & RESOURCES

SETTLING IN - FOR NEW CITY RESIDENTS

▶ **Adult Education and Employment Programs**

The Department of Human Service Programs provides a wide range of services. See page 21.

▶ **CITY TV-8 (Municipal Channel)** For calendar information, community programs and City Council meetings on Mondays at 5:30 p.m.

▶ **County** The City of Cambridge is in Middlesex County.

▶ **Driver's License/Vehicle Registration** Massachusetts Registry of Motor Vehicles, 866-627-7768 www.mass.gov/rmv

▶ **Excise Tax (automobile tax)** Bills are issued annually. Call the Finance Dept. 617-349-4220. To pay online: www.cambridgema.gov

▶ **Families, Youth and Seniors** The Department of Human Service Programs provides a wide range of services. See page 21.

▶ **Libraries** Call 617-349-4040 or visit www.cambridgepubliclibrary.org

▶ **Moving Van Permits** Call 617-349-4721 or visit www.cambridgema.gov/Traffic

▶ **Postal Service** Call 800-275-8777 or visit www.usps.com

▶ **Pet Registration** Dogs must be registered with the Cambridge Animal Commission. Call 617-349-4376 or visit www.cambridgema.gov/dept/animal.html

▶ **Property Tax** Bills are issued twice annually. Call the Finance Department at 617-349-4220.

▶ **Public Transportation**

Massachusetts Bay Transportation Authority (MBTA), 800-392-6100 or visit www.mbta.com. The Red and Green Lines of the Subway (known as the T) and numerous buses serve Cambridge.

▶ **Recreation**

The Department of Human Service Programs provides a wide range of services. See page 21.

▶ **Recycling/Trash Pick-up** Cambridge has a mandatory recycling ordinance. See page 19.

▶ **Resident/Visitor Parking Permits** Permits are required for on-street parking in posted residential neighborhoods. See page 19.

▶ **School Information / Registration** See page 23.

▶ **School Closings and Information** Call the CPS Link Line for recorded information, 617-349-6513.

▶ **Snow Emergency Parking Ban**

If the City declares a snow emergency, parking is prohibited on certain streets. See page 19.

▶ **Snow Clearance Ordinance**

Property owners are required to remove snow/ice from sidewalks next to their home/business. See page 19.

▶ **Street Cleaning** Streets are cleaned once a month from April through December. During designated street cleaning days, cars must be moved or they will be ticketed and towed. See page 19.

▶ **Voter Registration** Call the Cambridge Election Commission, 617-349-4361 or visit www.cambridgema.gov/Election. See page 17.

UTILITIES

▶ **Electricity/Gas**

NSTAR 800-592-2000 TTY 800-322-8242
www.nstar.com Dig Safe 888-344-7233
Provides electric and gas service in Cambridge.

▶ **Sewer** 617-349-4851

www.cambridgema.gov/TheWorks

The Sewer Division of the Dept of Public Works maintains the Cambridge sewer collection system.

▶ **Telephone**

Cambridge area codes are 617 and 857.
Dial 1 plus the area code for long distance calls.

▶ **Local & Long Distance Service**
AT&T 800-205-6268 www.att.com
Comcast 800-COMCAST
www.comcast.com
Verizon 800-837-4966
www.verizon.com

▶ **Water** 617-349-4770
www.cambridgema.gov/CWD

Cambridge operates its own water utility. Bills are issued quarterly. Visit the Website to pay online.

SIGN UP FOR CAMBRIDGE E-LINE AT www.cambridgema.gov

- Snapshot of News from City's Home Page
- Receive E-mail or Text Alerts if City Declares a Snow Emergency
- Optional Public Safety Alerts & Street Cleaning Reminders
- Various Department Newsletters

▶ **Important Numbers**

Emergency: Police, Fire and Ambulance (including TTY) 911
 Police (non-emergency) 617-349-3300
 Fire (non-emergency) 617-349-4900
 Public Health Dept. 617-665-3800
 Public Schools 617-349-6400
 Public Works 617-349-4800

▶ **Cambridge City Hall**

795 Massachusetts Avenue
 Cambridge, MA 02139*
 617-349-4000 TTY 617-349-4242**
www.cambridgema.gov

* Address for all departments in City Hall
 **TTY number for all departments in City Hall
 Mon., 8:30 a.m. - 8 p.m., Tues.- Thurs.,
 8:30 a.m. - 5 p.m., Fri., 8:30 a.m. - 12 p.m.

▶ **City Manager's Office**

617-349-4300
www.cambridgema.gov/cmanager.cfm
 Robert W. Healy, City Manager
 Richard C. Rossi, Deputy City Mgr.
 The City Manager is appointed by the City Council as the City's Chief Executive Officer.
 E-mail: citymanager@cambridgema.gov

▶ **City Council Office**

617-349-4280
www.cambridgema.gov/ccouncil.cfm
 The City Council is the City's elected legislature. City Council meetings are held Mondays at 5:30 p.m. in the Sullivan Chamber of City Hall. Meetings are broadcast live on CITY TV-8 and via Webcast at www.cambridgema.gov
 E-mail: council@cambridgema.gov

▶ **Mayor's Office**

617-349-4321
www.cambridgema.gov/mayor.cfm
 David P. Maher, Mayor
 The Mayor chairs City Council and School Committee meetings and serves as the City's political leader. E-mail: mayor@cambridgema.gov

▶ **City Information Lines**

Construction Information 617-349-4870
 Graffiti Hotline 617-349-6955
 Library Reference Desk (open until 9 p.m.) 617-349-4044
 Potholes/Sidewalk/Street Repairs 617-349-4854
 Public Works (24 hr. emergency service) 617-349-4860
 Recycling/Hazardous Waste 617-349-4005
 Rodent Control 617-349-4899
 School Closings/Information Line 617-349-6513
 Snow Emergency Parking Bans 617-349-4700
 Snow Hotline (unshoveled/icy sidewalks) 617-349-4903

▶ **City Departments**

Affirmative Action (pg. 17) 617-349-4331
 Animal Commission (pg. 18) 617-349-4376
 Arts Council (pg. 28) 617-349-4380
 Assessing (pg. 18) 617-349-4343
 Auditing 617-349-4240
 Budget 617-349-4270
 City Clerk (pg. 18) 617-349-4260
 City Council Office (pg. 15) 617-349-4280
 City Manager's Office (pg. 15) 617-349-4300
 CITY TV-8 (pg. 28) 617-349-4296
 Community Development (pg. 20) 617-349-4600
 Commission for Persons w/ Disabilities (pg. 21) 617-349-4692
 TTY 617-492-0235

Conservation Commission (pg. 25) 617-349-4680
 Consumers' Council (pg. 17) 617-349-6150
 Election Commission (pg. 17) 617-349-4361
 Electrical 617-349-4925
 Emergency Communications (pg. 25) 617-349-6911
 Emergency Management (pg. 25) 617-349-4842
 Finance (pg. 18) 617-349-4220
 Fire (non-emergency) (pg. 25) 617-349-4900
 GLBT (pg. 17) 617-440-4329
 Historical Commission (pg. 28) 617-349-4683
 Human Rights Commission (pg. 17) 617-349-4396
 Human Services (pg. 21) 617-349-6200
 Information Technology (IT) 617-349-4140
 Inspectional Services (pg. 18) 617-349-6100
 Law 617-349-4121
 Library (pg. 27) 617-349-4040
 License Commission (pg. 18) 617-349-6140
 Mayor's Office (pg. 15) 617-349-4321
 Peace Commission (pg. 17) 617-349-4694
 Personnel (pg. 17) 617-349-4332
 Police (non-emergency) (pg. 25) 617-349-3300
 Police Review & Advisory Board (pg. 17) 617-349-6155
 Public Health Department (pg. 24) 617-665-3800
 Public Works (pg. 19) 617-349-4800
 Purchasing (pg. 20) 617-349-4310
 Schools (pg. 23) 617-349-6400
 Traffic, Parking and Transportation (pg. 19) 617-349-4700
 Veterans' Services (pg. 17) 617-349-4761
 Water (pg. 14) 617-349-4770
 Weights & Measures (pg. 17) 617-349-6133
 Women's Commission (pg. 17) 617-349-4697

▶ **Other Helpful Numbers**

Cambridge District Court 781-306-2710
 Cambridge Housing Authority 617-864-3020
 Cambridge Superior Court (Middlesex) 781-939-2700
 Mass. Dept. of Conservation & Recreation 617-626-1250
 Middlesex Probate Court 617-768-5850
 Middlesex South Registry of Deeds 617-679-6300

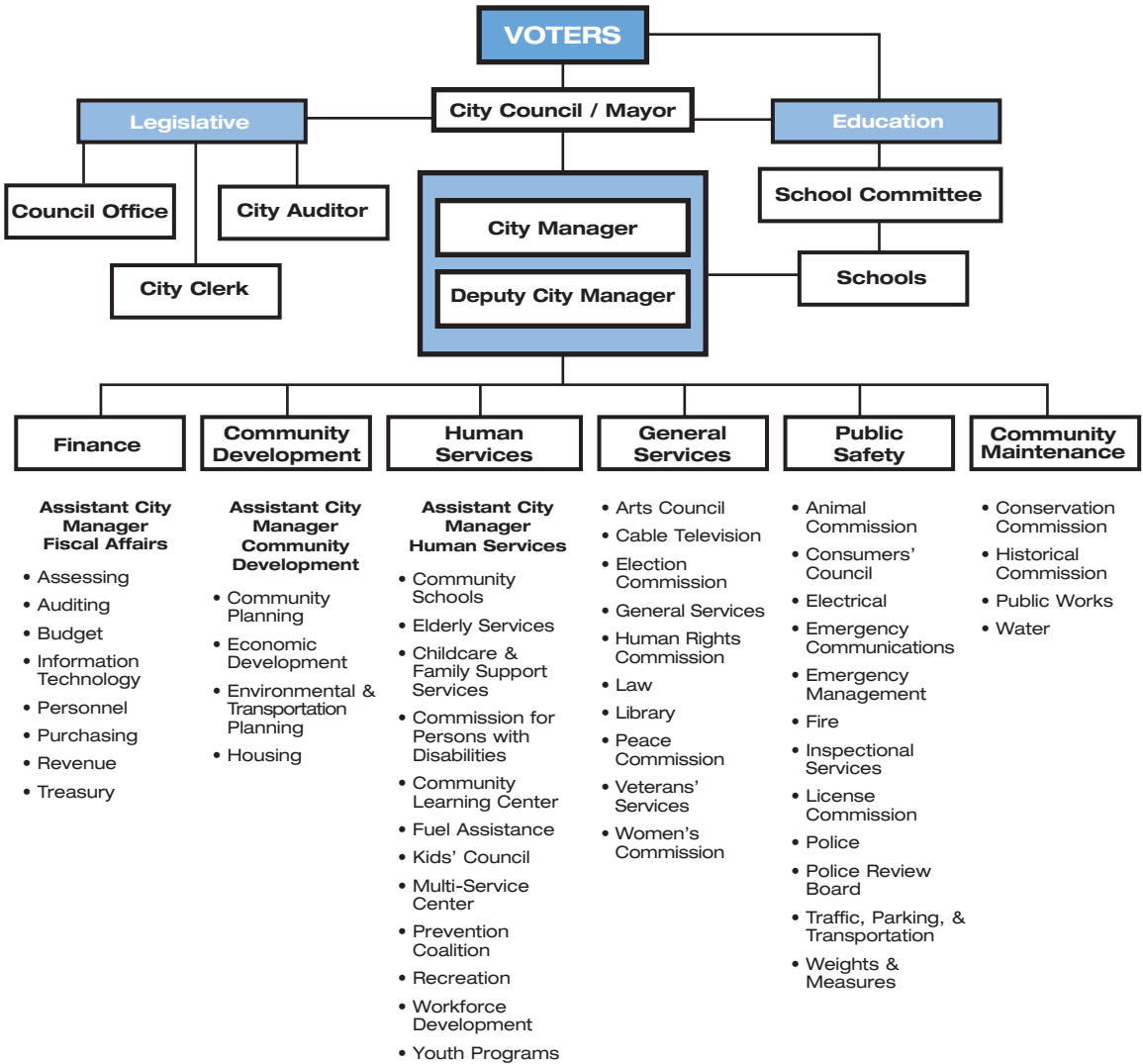
Check out the City's Website for more resources and helpful information:



- Sign up for Cambridge E-Line
- View City Council meetings via Webcast
- Pay Bills Online
- Download Permit Applications

www.cambridgema.gov

ORGANIZATIONAL CHART



CAMBRIDGE POLITICAL SYSTEM

► Cambridge Political System Plan E Form of Government – Proportional Representation

The City of Cambridge is governed by the Plan E form of Government. Nine City Councillors and six School Committee members are elected at large every two years under the Proportional Representation (PR) system, which allows voters to vote for as many candidates as they wish, but they must indicate their order of preference among those candidates by numbering each choice. Once elected, the City Council then elects a Mayor and a Vice Mayor.

The Mayor chairs the City Council and School Committee and serves as the City's political leader. The City Council appoints a City Manager to serve as the City's Chief Executive Officer.

For more information on voting and the election process, call the Cambridge Election Commission at 617-349-4361 or visit their Website, www.cambridgema.gov/Election.

CITY ORDINANCES

► Cambridge Municipal Code City Clerk's Office 617-349-4260

Cambridge Municipal Code, organized by subject matter and updated biannually, can be viewed online. Visit the City's Website, www.cambridgema.gov, and click on "Cambridge Municipal Code" located in the lower left corner. The most recent and official version of the Code is on file at the City Clerk's Office.

VOTING

- ▶ **Cambridge Election Commission**
51 Inman Street, 1st Floor 617-349-4361
www.cambridgema.gov/Election
- ▶ **Upcoming Election**
Municipal election: November 8
- ▶ **Voter Registration**
Call or visit the Cambridge Election Commission for registration, polling locations and absentee ballots. Alternatively, you can register to vote

when you make a transaction at a Registry of Motor Vehicles branch or License Express location. You must be a U.S. citizen, a Massachusetts resident and at least 18 years old by election day to register. Mail-In Voter Registration forms are available at all Cambridge post offices, public libraries, firehouses, and at the City Clerk's office.

RIGHTS AND RESOURCES

- ▶ **Affirmative Action Office** 617-349-4331
www.cambridgema.gov/dept/aff
Works to ensure compliance of equal employment opportunity and affirmative action in accordance with the intent of the regulations and guidelines of federal and state agencies.
- ▶ **Commission for Persons with Disabilities**
617-349-4692 (TTY) 617-492-0235
www.cambridgema.gov/DHSP2/disabilities.cfm
Addresses disability and access issues. See full listing on page 21.
- ▶ **Consumers' Council** 617-349-6150
www.cambridgema.gov/consumercouncil.aspx
For information on consumer rights and assistance in resolution of the full range of consumer disputes, including auto sales, home repair, debt collection and landlord/tenant issues.
- ▶ **GLBT Commission**
617-440-4329 www.cambridgema.gov/GLBT
Advocates for a culture of respect and monitors progress toward equality of all persons with regard to sexual orientation and gender identity.
- ▶ **Human Rights Commission**
617-349-4396 www.cambridgema.gov/HRC
Investigates and resolves complaints of discrimination in Cambridge in housing, employment, education and public accommodations.

- ▶ **Personnel Department**
617-349-4332
www.cambridgema.gov/dept/personnel.html
City job openings are posted in City Hall, in libraries and on the Website. Cambridge is an Affirmative Action/Equal Opportunity employer.
- ▶ **Peace Commission**
617-349-4694
www.cambridgema.gov/peace
Promotes peacemaking within Cambridge at the personal, neighborhood and citywide level.
- ▶ **Police Review & Advisory Board**
617-349-6155
www.cambridgema.gov/PRAB
Hears and decides citizen complaints of misconduct filed against Cambridge Police Officers.
- ▶ **Weights & Measures**
617-349-6133
www.cambridgema.gov/weight
Provides equity in the marketplace for consumers and businesses by providing quality inspections of weight, measure or pricing issues.
- ▶ **Women's Commission**
617-349-4697
www.cambridgewomenscommission.org
Advocates on behalf of all women and girls with other City departments and officials, local organizations, and state government to increase their opportunities through program development, policy recommendations, and public education on key issues.
- ▶ **Veterans' Services Department**
617-349-4761
www.cambridgema.gov/vet
Provides financial assistance to needy veterans and/or their dependents. Assists veterans and their families in applying for federal VA benefits, as well as state and local veterans' programs and services.



Memorial Day Parade and Observance

Middlesex County Sheriff's Department Color Guard marching at the City of Cambridge Memorial Day Parade and Observance.

▶ **Animal Commission** 617-349-4376
www.cambridgema.gov/dept/animal.html
 Annual dog registration/licensing, rabies vaccination clinics and animal-related issues.

▶ **Arts Council** 617-349-4380
www.cambridgeartscouncil.org
 Issues Street Performer Permits.

▶ **Assessing Dept** 617-349-4343
www.cambridgema.gov/Assessor
 Manages commercial and residential property values and the property database, including changes of title and subdivisions, and personal property (business) tax. Administers residential exemption tax relief programs, including community outreach for taxpayer assistance. Processes commitments of motor vehicle excise tax. Grants abatements/personal exemptions of real estate, personal property, and motor vehicle excise tax.

▶ **City Clerk's Office** 617-349-4260
www.cambridgema.gov/CityClrk
 Official record keeper for the City. Issues: Birth, Death, Marriage Certificates; Domestic Partnership Registration and Termination; and assorted Business Certificates.

▶ **Community Development Department** 617-349-4600
www.cambridgema.gov/cdd
 Planning Board special permits and sign certificates as may be required by zoning.

▶ **Conservation Commission** 617-349-4680
www.cambridgema.gov/CCC
 Issues Wetlands Protection Act Permits.

▶ **Finance Dept** 617-349-4220
www.cambridgema.gov/dept/finance.html Real estate, personal property and motor vehicle excise taxes; water and sewer charges; municipal lien certificates.

▶ **Fire Dept** 617-349-4918
www.cambridgefire.org Permits for smoke detectors, fire alarm and sprinkler systems, welding and torch use, fuel storage and use.

▶ **Health Dept** 617-665-3800
www.cambridgepublichealth.org
 Enforces regulations pertaining to biosafety, laboratory animals, asbestos in soil, tobacco, body art, body work therapy, tanning salons, and indoor ice rinks.

▶ **Historical Commission** 617-349-4683
www.cambridgema.gov/Historic
 Permits to alter a designated building or to demolish a building over 50 years old.

▶ **Inspectional Services** 617-349-6100 www.cambridgema.gov/Inspection
 Administers state building codes; building, demolition, asbestos removal, and sign permits; electrical, gas, plumbing and sprinkler permits; certificates of occupancy/inspection; curb cut applications; sanitary code inspections; permitting for restaurants/day camps/pools/tobacco sale; enforcement of zoning ordinance. Call for construction-related noise complaints.

▶ **License Commission** 617-349-6140 www.cambridgema.gov/License
 Administers licenses and enforces regulations governing: alcohol, antique stores, auctions, entertainment, festivals, garage and gasoline, hackney, innholder, jitney, livery/limousine, lodging, open air parking, package goods, palm readers, peddlers/vendors, and restaurants. Call for repetitive noise complaints.

▶ **Police Department** 617-349-3337
www.cambridgepolice.org Permits to carry firearms.

▶ **Public Works** 617-349-4800
www.cambridgema.gov/TheWorks
 Issues permits for:
 • Special events and using parks for non-athletic use 617-349-4846
 • Filming or photographing on City property 617-349-4846
 • Newsrack vendors 617-349-4869
 • Construction-related permits (sidewalk obstruction and excavation, boom/concrete trucks, cranes) 617-349-4833

▶ **Recreation Division** 617-349-6200
www.cambridgema.gov/DHSP2/recreation.cfm
 To reserve a field for athletic use, call 617-349-6238.

▶ **Traffic & Parking** 617-349-4721 www.cambridgema.gov/Traffic
 Permits for residential street parking, visitor parking, street obstruction/closure, construction truck/traffic clearance, moving vans, moving containers or crates, media vans, dumpsters, military personnel parking, traffic special permit (VIP reserved areas, parades, road races), and changes in quantity, use, or location of off-street parking spaces. Available forms include those for parking ticket and tow disputes, traffic sign and signal inquiries and complaints.

▶ **Water Department** 617-349-4770 www.cambridgema.gov/CWD
 Permits for: water-related construction, hydrant use and special events at Fresh Pond Reservation.

Issues and Concerns

- Consumer disputes 617-349-6152
- Discrimination in housing, employment, other 617-349-4396
- Graffiti hotline 617-349-6955
- Noise complaints (construction-related) 617-349-6100
- Noise complaints (both repetitive and immediate) 617-349-3300
- Parking ticket issues 617-349-4700
- Potholes / sidewalks / street repairs 617-349-4854
- Public Works (24 hr. emergency service) 617-349-4860
- Public Works (svc. requests) theworks@cambridgema.gov
- Rodent control 617-349-4899 or rodents@cambridgema.gov
- Snow hotline (report unshoveled/icy sidewalks) 617-349-4903
www.cambridgema.gov/snow
- Street light repair 617-349-4925

FACILITIES & PUBLIC WORKS

▶ **Department of Public Works (DPW)**

147 Hampshire Street 617-349-4800
www.cambridgema.gov/TheWorks
E-mail: theworks@cambridgema.gov
Cambridge Cemetery 617-349-4890
Engineering 617-349-4845
Service Requests 617-349-4846
Sewer Maintenance 617-349-4851
Street Maintenance 617-349-4851
24-Hour Emergency 617-349-4860

▶ **Street Cleaning 617-349-4800**

On designated street cleaning days, cars must be moved or they will be ticketed and towed. Check neighborhood signs for schedules or visit the DPW Website and click on Services > Street Cleaning.

▶ **Trash Collection 617-349-4800**

Weekly curbside pickup and pre-arranged pickup of large appliances. Trash placed at the curb the night before collection must be in rodent-resistant barrels with tight-fitting lids, no earlier than 6 p.m. For exemptions, call 617-349-4692. Trash in plastic bags can only be placed at the curb on collection day, no later than 7 a.m. Only heavy duty plastic bags will be collected. Hazardous waste drop-off is held 3 times per year. For a full schedule, visit the DPW Website.

▶ **Curbside Recycling 617-349-4800**

A mandatory recycling ordinance requires residents, businesses and institutions to recycle. Recycling containers and weekly curbside pickup (on the same day as trash collection) are provided free to residents, K-12 schools and non-profits with fewer than 50 employees. For a list of how and what to recycle, call 617-349-4005 or visit the DPW Website and click on Our Services > Recycling. Businesses curbside recycling service available with Save That Stuff; call (617) 241-9998.

▶ **Traffic Parking & Transportation Department**

344 Broadway 617-349-4700
www.cambridgema.gov/Traffic

For information on resident and disability parking, parking tickets, off-street parking, moving vans, street signs, traffic signals and more.

▶ **Resident/Visitor Parking Permits 617-349-4700**

Resident permits are required to park on residential streets. Your vehicle must be principally garaged in Cambridge and you must have proof of your residency (a utility bill dated within the last 30 days, indicating your Cambridge residence and in the same name as the vehicle registration). Visitor passes are also available and restricted to one per household. Visitors to a residential household should use the visitor pass.

▶ **Parking Ticket Payment/Disputes 617-349-4700**

Tickets can be paid online at www.cambridgema.gov/traffic; by phone at 617-491-7277; by mail at P.O. Box 399113, Cambridge, MA 02139; and in person at 344 Broadway, Cambridge. Tickets can be disputed by using the online dispute form on the department's Website. You will be notified of your hearing date by mail.

▶ **Snow Emergency Parking Ban 617-349-4700**

When a snow emergency is declared, parking is prohibited on major streets and on one side of smaller streets. Check posted signs carefully. To find out if a ban is in effect, call, visit www.cambridgema.gov or check CITY TV-8. For a list and map of parking restrictions, or information on available off-street parking, visit www.cambridgema.gov/traffic/snow.cfm.

▶ **Drop-Off Center Recycling**

147 Hampshire Street 617-349-4800
Tuesday & Thursday, 4 - 7:30 p.m.
Saturday, 9 a.m. - 4 p.m.

Accepts a range of materials not picked up at curbside including food waste, mercury items, non-alkaline batteries, plastic bags. Open to Cambridge residents and businesses with fewer than 50 employees. Visit the Website for a full list of items accepted.

▶ **Yard Waste 617-349-4800**

Separate yard waste is collected from the first full week in April through the second week in December 2011; collection dates are April 4 - December 16. Place yard waste in paper refuse bags or loose in barrels with City stickers. Call (617) 349-4800 for stickers.

▶ **Snow Clearance 617-349-4800** cambridgema.gov/snow

Property owners are required to remove snow and ice from sidewalks next to their property within 12 hrs after snowfall ends in the daytime and before 1 p.m. if it has fallen during the night. Treat ice with a melting substance within 6 hours of the time it forms. For exemptions, call the Council on Aging at 617-349-6220.

▶ **Street Lights 617-349-4925**

To report a streetlight that is not working, call the electrical dept. at the number listed above (24 hrs.) or e-mail streetlightrepair@cambridgema.gov.

TRAFFIC & PARKING

▶ **Moving Van Permits**

617-349-4721

Residents can reserve a space in front of their buildings for moving vans. The online permit application must be submitted 4 days prior to the move date.

▶ **Permits 617-349-4721**

The Traffic Parking & Transportation Department issues permits for: block parties, street obstruction, moving vans, dumpsters and contractor parking. All applications are available online.

▶ **Towed Vehicles 617-349-3300**

Call number above with your license plate or check directly with these towing companies:
B&B 617-492-5781
Pat's 617-354-4000
Phil's 617-547-3701

▶ **Signed Disability Parking Space 617-349-4700 (TTY) 617-349-4621**

If you have a disability plate or placard, you may file an application for a residential disability parking space. Requirements are stated on the application, which is available on the Traffic Parking & Transportation Website or at the department.

▶ **Community Development Department (CDD)**

344 Broadway 617-349-4600
www.cambridgema.gov/CDD

The mission of the Community Development Department is to enhance the physical environment and quality of life for Cambridge's highly diverse population. This is accomplished by planning and managing physical change and encouraging economic growth to strengthen the City's tax base, produce affordable housing and employment opportunities, and provide services to residents.

▶ **Community Planning Division (CDD) 617-349-4651**

www.cambridgema.gov/CDD/cp

Information and technical assistance on zoning, land use, urban design, demographic and geographic analysis, neighborhood planning, and development and renovation of parks and open space.

▶ **Economic Development (CDD)**

617-349-4637 www.cambridgema.gov/CDD/ed

Offers assistance to businesses, works to promote an environment for business growth and helps maintain thriving commercial districts. Programs include business counseling, façade improvement and retail best practices programs, real estate site search and support for job training. Produces quarterly development log.

▶ **Environmental & Transportation Planning (CDD)**

617-349-4604 www.cambridgema.gov/CDD/et

Provides information and assistance on streetscape improvements, traffic calming, pedestrian/bicycle programs, vehicle trip reduction, and climate protection initiatives.

▶ **Housing Division (CDD)**

617-349-4622 www.cambridgema.gov/CDD/hsg

Provides information about affordable rental and homeownership opportunities and support for affordable housing production, home improvement loans, and education and financial assistance for first time homebuyers.

▶ **Cambridge Housing Authority**

617-864-3020 www.cambridge-housing.org

Develops and manages affordable housing for low-income individuals and families. Call for information on public housing or Section 8.

BUSINESS RESOURCES

▶ **Biotech Resources**

www.cambridgebiotech.org

Administered by the Economic Development Division, this Website provides listings helpful to the biotech industry, including business resources, academic and research institutes, City agencies and resources, and commercial real estate ventures.

▶ **Business Certificates**

City Clerk's Office 617-349-4260
www.cambridgema.gov/CityClrk

A person, partnership or corporation conducting business in Cambridge under a name other than their own or corporate name must file a business certificate with the City Clerk's Office.

▶ **Cambridge Chamber of Commerce 617-876-4100**

www.cambridgechamber.org

▶ **Central Square Business Assoc. 617-864-3211**

www.centralsquarecambridge.com

▶ **East Cambridge Business Association**

www.eastcambridgeba.com

▶ **Economic Development Division 617-349-4637**

www.cambridgema.gov/CDD/ed

Programs aimed at revitalizing commercial

districts, supporting entrepreneurship and preserving a strong employment base. Offers business development workshops and counseling, commercial façade and interior improvement assistance (matching grants available), site selection assistance, and training for entry level biotech/life sciences employment.

▶ **Harvard Square Business Association**

617-491-3434 www.harvardsquare.com

▶ **Inman Square Business Association**

www.inmansquare.com

▶ **Kendall Square Business Association**

www.kendallsq.com

▶ **Office of Workforce Development**

617-349-6234 www.cambridgema.gov/DHSP2/owd.cfm

Helps employers meet their hiring needs by connecting them to adult and teen Cambridge residents looking for jobs. Businesses interested in hosting site visits for teens, or in conducting mock interviews to help adults and teens improve their interview skills, are encouraged to call.

▶ **Purchasing Department**

617-349-4310 www.cambridgema.gov/purchasing

Administers purchasing for the City, ensuring that purchases are made in accordance with the law, are fair and competitive, and are obtained at the lowest possible cost. Visit the Website for a list of open bids, solicitation documents and information on doing business with the City.

▶ **Women in Business Connection**

617-661-WIBC www.wibconnection.org

▶ **Dept. of Human Service Programs (DHSP)**

51 Inman Street 617-349-6200
www.cambridgema.gov/DHSP2

Provides a wide range of services that enhance the quality of life of Cambridge residents.

▶ **Adult Basic Education**

Provides basic literacy instruction, high school diploma and GED preparation, and English for speakers of other languages. Special programs include computer classes for Cambridge Housing Authority residents and homeless adults, a transition to college program, family literacy, citizenship preparation, and workplace education for local businesses.

Community Learning Center 617-349-6363
www.cambridgema.gov/DHSP2/clc.cfm

▶ **Children, Youth & Families**

Assists with advocacy/policy, afterschool programs, community schools, family and senior events, literacy support, preschool childcare, youth programs, youth centers, teams, organizations and professional development.

Cambridge Prevention Coalition 617-349-6283
 The mission of the coalition is substance abuse prevention.

Center for Families 617-349-6385

Child-Care and Family Support Services 617-349-6200

Community Schools 617-349-6200

Kids' Council 617-349-6239

Youth and Teen Programs 617-349-6200

Agenda for Children

Out of School Time Initiative 617-349-4099

Literacy Initiative 617-665-3812

▶ **Commission for Persons with Disabilities**

www.cambridgema.gov/DHSP2/disabilities.cfm
 617-349-4692 (TTY) 617-492-0235

Provides information on disability and access issues, promotes equal opportunity for people with physical, mental or sensory disabilities, ensures compliance with the Americans with Disabilities Act. Publishes *AccessLetter*, a free bimonthly newsletter. Call for information on:

Temporary Disability Parking Permits 617-349-4692

Taxi Discount Coupons 617-349-4692

Trash Exemptions 617-349-4692

▶ **Employment Assistance**

Provides job search assistance to adults, including resume preparation, career counseling, interview skills training and job-readiness workshops. Services for teens include career exploration and work opportunities, including the Mayor's Summer Youth Employment Program.

Office of Workforce Development
 617-349-6234
Cambridge Employment Program
 617-349-6166

▶ **Housing Assistance, Homelessness & Hunger**

The Multi-Service center provides services to homeless and at-risk families and individuals, including housing search assistance, counseling as appropriate, advocacy for elders and persons with disabilities, and referral to food programs. Services are available to the Haitian population regardless of homeless status. The Fuel Assistance Program provides winter heating assistance to residents based on need.

Fuel Assistance Program 617-349-6252
Multi-Service Center 617-349-6340

▶ **Recreation**

Provides year-round affordable and accessible recreation opportunities for residents of all ages. The Recreation Division also manages City-wide and neighborhood-based programs and facilities.

Recreation 617-349-6200

▶ **Seniors**

The Senior Centers offer enrichment, recreational and social activities, social services, meals programs, food pantry, counseling, support groups, transportation services and volunteer opportunities. Referral to home-based services and taxi coupons and other discounts are available for seniors age 60 and up.

Council on Aging 617-349-6220

Citywide Senior Ctr. 617-349-6060

806 Massachusetts Ave.

No. Cambridge Senior Ctr. 617-349-6320

2050 Massachusetts Ave.

▶ **www.CambridgeSomerville ResourceGuide.org** 617-349-6966

An online guide to health and human service resources including 26 different service areas such as legal services, food pantries, family support, employment services, and immigration services.



Community Learning Center (CLC) Celebrates 40th Anniversary

The CLC is celebrating 40 years of offering free services to Cambridge residents who need basic education, English language and employment skills. The CLC serves over 1,000 people annually.

▶ **Childcare Programs (DHSP)**
617-349-6200 www.cambridgema.gov/DHSP2/childcare.cfm

Licensed pre-school and afterschool childcare programs offer appropriate curriculum, for children 2 years and 9 months to 10 years.

Preschool Programs (ages 2.9 - 5 years)
617-349-6200

- East Cambridge Preschool
(at Kennedy/Longfellow)
- Haggerty Preschool
- King Open Preschool
- Martin Luther King Preschool
- Morse Preschool
- Peabody Preschool

Afterschool Childcare Programs (K- 5th grade)
617-349-6200

- Fletcher/Maynard Afterschool
- King Afterschool
- Morse Afterschool
- Peabody Afterschool

King Open Extended Day Program (K - 6th grade)
617-349-6078

Jointly sponsored by the Cambridge School Department and the Department of Human Services serving 120 children enrolled in the King Open School.

▶ **Neighborhood Councils and Community Schools** 617-349-6200
www.cambridgema.gov/DHSP2/commschools.cfm

Provides a network of neighborhood services, offering educational, cultural, social and recreational opportunities for all ages, including individuals with special needs. Community School Directors work with their Neighborhood Councils to assess community needs and design quality, cost effective Out of School Time programs, including after school enrichment classes, two extended day partnerships with the School Department, full-day summer and vacation camps, and two preschool camp programs.

- Agassiz** (at Baldwin School) 617-349-6287
- Cambridgeport** 617-349-6307
- Fitzgerald** (at Peabody School) 617-349-6302
- Fletcher/Maynard** 617-349-6295
- Haggerty** 617-349-6264
- Harrington** (at King Open) 617-349-6305
- Kennedy** 617-349-6308
- Linnaean** (at Graham & Parks) 617-349-6267
- Longfellow** 617-349-6260
- King** (at MLK School) 617-349-6269
- Morse** 617-349-6291
- Tobin** 617-349-6300

▶ **Programs for Individuals with Special Needs**
617-349-6200

Afterschool, weekend and summer recreation programs for children and youth with special needs. Summer programs are located in the Morse School, 14 Granite St., Cambridge. All other programs are located at the W. Cambridge Youth & Community Center, 680 Huron Avenue.

▶ **Youth Centers** 617-349-6200
www.cambridgema.gov/DHSP2/youthprograms.cfm

Serves youth ages 9 - 19, developing social, recreational, leadership, and academic skills at five City youth centers throughout the city. Four licensed afterschool programs and two specialized middle school programs for 9-13 years olds, while five teen programs offer work-based learning and enrichment activities, plus sports and leisure activities for teens, 14-19 years old.

- Area IV** 243 Harvard Street 617-349-6262
- Frisoli & Middle School Program** 61 Willow Street 617-349-6312
- Gately*** 70R Rindge Avenue 617-349-6277
- Moore** 12 Gilmore Street 617-349-6273
- West Cambridge** 680 Huron Avenue 617-349-6314

* Middle School Partnership at Gately 617-349-3004

▶ **Center for Families**
617-349-6385 70R Rindge Ave
www.cambridgema.gov/DHSP2/families.cfm

City-wide parent/child activities and family education/support programs.

▶ **Kids' Council** 617-349-6239
www.cambridgema.gov/DHSP2/kidscouncil.cfm

Advocates for the well-being of children, youth and families; makes policy recommendations concerning programs and services.

▶ **Summer Food Program** 617-349-6252
Provides nutritious meals to any child under 19 in the summer.

▶ **City Scholarship Fund** 617-349-4220
www.cambridgema.gov/dept/finance.html
Provides financial assistance opportunities for eligible Cambridge residents wishing to pursue post secondary education. Each year, the City awards 20-30 scholarships of approximately \$2,500 each, supported by donations from Cambridge residents and businesses.



"One of the Nation's Best Communities for Young People"

Cambridge was honored with this distinction for the 4th time in 2010 by America's Promise Alliance and ING. Cambridge earned the honor for its efforts to provide children and youth with opportunities to become successful contributors to society. Among those efforts is the "Baby University" program, that begins with very young children to address the achievement gap.

▶ **Cambridge Public Schools (CPSD)**
 159 Thorndike Street 617-349-6400 www.cpsd.us
School Closings & Events 617-349-6513

Cambridge has 12 elementary schools (most of which are K-8), and one comprehensive high school (9-12). The Schools at a Glance booklet and the Family Resource Map of Cambridge are available through the Family Resource Center and the CPSD Website.

▶ **School Registration**
Cambridge Family Resource Center
 15 Upton Street
 617-349-6551 www.cpsd.us/frc/CambFamRes.cfm

Kindergarten entry age Sept. 2011 must be 4 years old by March 31, 2011
 Kindergarten entry for Sept. 2012 must be 4 years old by March 31, 2012
 The Family Resource Center, open year-round, registers students for school and connects families with local services, including pre-school and afterschool programs. Call schools to arrange tours.

▶ **School Committee 617-349-6620 www.cpsd.us**

Six members of the board are elected at large, while the Mayor serves as Chair. The committee determines overall School Department policy and budget. Meetings are held at 6 p.m. on the first and third Tuesday of each month (except July and August). They are open to the public and are telecast and rebroadcast on Cable Ch. 99.

▶ **Public Elementary Schools**

- Amigos School** (Grades K - 8)
101 Kinnard Street 617-349-6567
- Maria L. Baldwin School** (Grades K - 8)
28 Sacramento Street 617-349-6525
- Cambridgeport School** (Grades K - 8)
89 Elm Street 617-349-6587
- Fletcher / Maynard Academy** (Grades K - 8)
225 Windsor Street 617-349-6588
- Graham & Parks** (Grades K - 8)
44 Linnaean Street 617-349-6577
- Haggerty School** (Grades K - 6)
110 Cushing Street 617-349-6555
- Kennedy / Longfellow School** (Grades K - 8)
158 Spring Street 617-349-6841
- Dr. Martin Luther King Jr. School** (Grades K - 8)
100 Putnam Avenue 617-349-6562
- King Open School** (Grades K - 8)
850 Cambridge Street 617-349-6540
- Morse School** (Grades K - 8)
40 Granite Street 617-349-6575
- Peabody School** (Grades K - 8)
70 Rindge Avenue 617-349-6530
- Tobin School*** (Grades K - 8)
197 Vassal Lane 617-349-6600

*The Montessori Program is available to children between the ages of 3 and 8.

▶ **Public High School**
Cambridge Rindge and Latin School
 459 Broadway (Grades 9 - 12)
www.cpsd.us/crls 617-349-6630

Rindge School of Technical Arts
www.cpsd.us/rst 617-349-RSTA

High School Extension Program
 15 Upton Street
www.cpsd.us/hsep 617-349-6880

▶ **Charter Schools**
Benjamin Banneker Charter School (K-6)
 21 Notre Dame Avenue 617-497-7771

Community Charter School (Grades 7 - 12)
 245 Bent Street 617-354-0047

▶ **Special Education Schools**
Farr Academy
 71 Pearl Street 617-492-4922

Threshold Program Lesley Univ
 29 Everett Street 617-349-8181

▶ **Private Schools**
Boston Archdiocesan Choir (Grades 5 - 8)
 29 Mt Auburn Street 617-868-8658

Buckingham, Browne & Nichols (PK - 12)
 80 Gerrys Landing Rd 617-547-6100

Cambridge Friends School (Grades PK - 8)
 5 Cadbury Road 617-354-3880

Cambridge Montessori (Age 2 - Grade 9)
 161 Garden Street 617-492-3410

Fayerweather Street School (Grades PK - 8)
 765 Concord Avenue 617-876-4746

International School of Boston (Grades 1 - 12)
 45 Matignon Road 617-499-1451

Matignon High School (Grades 9-12)
 1 Matignon Road 617-876-1212

Shady Hill School (Grades PK - 8)
 178 Coolidge Hill 617-868-1260

St Peter Elementary School (Grades PK - 8)
 96 Concord Avenue 617-547-0101

▶ **Volunteering**
Cambridge School Volunteers
www.csvinc.org 617-349-6794

▶ **Hospitals****Cambridge Hospital Campus**

1493 Cambridge Street 617-665-1000

Mount Auburn Hospital

330 Mount Auburn Street 617-492-3500

Spaulding Hospital (Acute & Rehabilitative Care)

1575 Cambridge Street 617-876-4344

▶ **Cambridge Health Alliance****1493 Cambridge Street 617-665-1000****www.challiance.org**

This innovative healthcare system provides high quality care throughout Cambridge. It includes three hospitals, 15 primary care practices, the Cambridge Public Health Department and Network Health. The Alliance offers comprehensive health services including 24-hour emergency care, surgery, medical specialties, mental health and primary care.

Primary Care Appointment Line 617-665-1305**Mental Health Referral Line 617-591-6033**▶ **Cambridge Facilities of Cambridge Health Alliance:****Cambridge Hospital Campus**

1493 Cambridge Street 617-665-1000

Cambridge Pediatrics

1493 Cambridge Street 617-665-1264

Primary Care Center

1493 Cambridge Street 617-665-1068

Cambridge Women's Health Center

1493 Cambridge Street 617-665-2800

Cambridge Birth Center

10 Camelia Avenue 617-665-2229

Cambridge Breast Center

1493 Cambridge Street 617-665-2001

Windsor Street Health Center

119 Windsor Street 617-665-3600

Cambridge Family Health

237 Hampshire Street 617-575-5570

East Cambridge Health Center

163 Gore Street 617-665-3000

Cambridge Family Health North

2067 Massachusetts Avenue 617-575-5570

Teen Health Center

Cambridge Rindge & Latin, 459 Broadway 617-665-1548

▶ **Cambridge Public Health Department (CPHD) 119 Windsor Street 617-665-3800****www.cambridgepublichealth.org**

Responsible for protecting the health of Cambridge residents, workers and visitors. Services include communicable disease prevention and control, school health, indoor air quality inspections, hazardous waste site review, emergency preparedness, violence prevention, West Nile virus response, childhood asthma prevention, tobacco control, children's dental health, data analysis, health advocacy, and regulatory enforcement (see City Licensing). CPHD is part of the Cambridge Health Alliance.

Some Cambridge Public Health Department Programs:▶ **Environmental Health****617-665-3838**

Offers air quality investigations for residents, workers and businesses. Also addresses concerns about potential toxic exposures. Asthma counseling and home assessments are available to families of children (age 12 or younger) with asthma. Lead poisoning prevention information and home assessments are available to families with children under age 6.

▶ **Public Health Nursing****617-665-3800**

Offers free flu clinics, a tuberculosis program, vaccine distribution and health education for individuals and businesses.

▶ **Community Health****617-665-3655**

Oversees an early literacy initiative, a men's health program, and a dental education and screening program in the elementary schools. The division also coordinates a citywide domestic violence prevention program.

▶ **CambridgeSomerville ResourceGuide.org****www.CambridgeSomervilleResourceGuide.org****617-349-6966**

An online guide to health and human service resources made possible by the Cities of Cambridge and Somerville, the Cambridge Health Alliance, the Agenda for Children, and the Somerville Community Health Foundation. Covers services including legal services, food pantries, family support, employment and immigration.

▶ **Boston Area Rape Crisis Center 99 Bishop Allen Drive****24 hour hotline 800-841-8371****www.barcc.org**

Comprehensive sexual assault services.

▶ **RESPOND, Inc.****P.O. Box 555, Somerville****617-623-5900 www.respondinc.org**

Domestic violence services, including shelter.

▶ **Transition House 617-868-1650****Crisis: 617-661-7203 649 Mass. Ave.****www.transitionhouse.org**

Domestic violence outreach and intervention.

▶ **Cambridge Police Department
Emergency 9-1-1
Non-Emergency 617-349-3300
125 Sixth St.**

www.CambridgePolice.org

Committed to the enforcement of laws and preservation of order that protect the rights and property of every person within the City of Cambridge. Provides police service to impact crime through the use of new and proven crime prevention strategies and partnerships with the community.

▶ **Crime/Drug Tip Hotline
617-349-3359**

A 24-hour Hotline enabling citizens to provide CPD with confidential tips about illicit drug use and distribution or any other criminal activity.

▶ **Community Relations Unit
617-349-3236**

Implements basic goals of Community Policing by actively engaging the community in identifying problems and solutions, and by establishing liaisons with community groups and formal organizations.

▶ **Neighborhood Sergeants
Program 617-349-9339**

Neighbor Sergeants assigned to each Cambridge neighborhood and Sector Lieutenants assigned to each sector coordinate outreach and

problem-solving activities within their areas. Visit the CPD Website and click on “Neighborhood Sergeants Program” for details.

▶ **Youth & Family Services Unit 617-349-3008**

Goes beyond the role of traditional juvenile units. Offers support for youth and families, such as intervening early, interacting with youth and their family, and working with them to resolve issue(s) that may have led to a negative act or crime. School Resource Officers also act liaisons between CPD, schools, youth centers and other resources in Cambridge.

▶ **Social Media**

CPD has a social media presence at www.facebook.com/CambridgePolice and at www.twitter.com/CambridgePolice.

▶ **Fire Department (CFD) Emergency 9-1-1
Non-emergency 617-349-4900 www.cambridgefire.org**

CFD has a Class I rating by the Insurance Services Office, recognizing the highest level of fire protection. Provides fire suppression, emergency medical services, heavy rescue service, hazardous materials response, water and dive rescue services, confined space rescue, etc. Call for fire prevention and safety information. The CFD also issues permits for smoke detectors, fire alarms, sprinkler systems, welding and torch use, and flammable storage.

▶ **Emergency Communications Department
Emergency 911 Administration 617-349-6911
www.cambridge911.org**

Operates the City’s combined Emergency Communications and 911 Center (ECC), linking residents with police, fire and emergency medical personnel responding to emergencies and other public safety concerns.

PARKS, RECREATION & CONSERVATION

▶ **Parks / Playgrounds / Off Leash
Dog Areas 617-349-4880
www.cambridgema.gov/TheWorks**

Cambridge has about 80 parks, playgrounds, tot-lots, and two fenced in Off Leash Dog areas at Danehy Park and Pacific St. Park. For more information, visit www.cambridgema.gov, click on Living Page under Cambridge Resources, then see Parks and Playgrounds. For maintenance requests, call the number listed above.

▶ **Recreation Division of DHSP
617-349-6200 www.cambridgema.gov/DHSP2/recreation.cfm**

Reserve a field (athletic use) 617-349-6238
Reserve a park (non-athletic) 617-349-4846
The City of Cambridge also maintains basketball courts, tennis courts, softball, soccer and other athletic fields. Call for information on adult softball and basketball leagues, youth and family recreational programs, pools, special needs camps, afterschool programs, and a summer program.

▶ **Gold Star Pool
Berkshire & Cambridge Streets
617-349-6310**

Open July through August.

▶ **War Memorial Recreation Center 617-349-6237
1640 Cambridge Street**

Offers year-round swimming and recreational opportunities.

▶ **Danehy Park 99 Sherman Street 617-349-4895**

This 55-acre park includes tot lots, water play feature, picnic areas, soccer and softball fields. In September, the City hosts Danehy Park Family Day, a free event with children’s amusement rides, crafts, performers, free hot dogs and soda. Permits are required for use of athletic fields.

▶ **Fresh Pond Reservation 617-349-4762**

Made up of a 155-acre pond and 162 acres of surrounding land, Fresh Pond is part of the reservoir system for the City of Cambridge. Water from Fresh Pond is purified at the City’s Water Treatment Plant, providing drinking water to residents and businesses in Cambridge. Fresh Pond is a favorite gathering place for people who enjoy walking, running, bike riding, rollerblading and bird watching.

▶ **Fresh Pond Municipal Golf Course
617-349-6282 www.cambridgema.gov/DHSP2/recreation.cfm**

A nine-hole course located at 691 Huron Avenue.

▶ **Conservation Commission
344 Broadway 617-349-4680
www.cambridgema.gov/CCC**

Protects and enhances the City’s natural resources through regulatory review, planning, advocacy and education. Also administers Wetlands Protection Act Permits and the Community Garden Program.

► **Main Library**

449 Broadway

www.cambridgepubliclibrary.org 617-349-4040

Mon - Thur. 9 a.m. - 9 p.m., Fri. and Sat. 9 a.m. - 5 p.m.

Sun. 1 - 5 p.m. (Oct. through Apr.)

The Cambridge Public Library (CPL) holds over 100 programs each month. From children's singalongs and storytimes to author readings and special events in the Main Library's magnificent new lecture hall, there's something for everyone. Check out our Calendar of Events to find what you're looking for.

► **Book Groups**

From our Great Books group that reads the classics to our Chick Lit group, there's a group for everyone. They're enjoyable, informative and a fantastic way to meet individuals from our community.

► **Library Card Benefits**

A library card is quick and easy to get and gives you access to over 6 million books, CDs, DVDs, magazines and online resources. You just need an ID and proof of your Massachusetts address to obtain one.

Your Cambridge Public Library card:

- Puts all the resources of the Minuteman Library Network, including 42 public and six academic libraries, at your fingertips;
- Allows you to reserve and renew items in person, by phone or online;
- Lets you borrow most books, audio books and CDs for 3 weeks and magazines and DVDs for one week with the option to renew;
- Gives you access to public computers at any Cambridge Public Library location.

► **Museum Passes**

Your library card also entitles you to reserve passes that offer discounts or free admission to museums and institutions including:

- Children's Museum
- Griffin Museum of Photography
- Harvard Natural History Museums
- Isabella Stewart Gardner Museum
- New England Wild Flower Society
- Museum of Science
- New England Zoos (Franklin Park, Stone Zoo)
- Peabody Essex Museum
- The Sports Museum
- Discovery Museums
- Harvard Art Museum
- Institute of Contemporary Art
- JFK Museum/Library
- Museum of Fine Arts
- MIT Museums
- Rose Art Museum of Brandeis
- Wheelock Family Theatre

The Friends of the Public Library fund many of these pass programs.

► **Children's Collection**

The children's collection includes books, music, movies, audio books, magazines, traditional and online games and multicultural resources. All children's programs are free and open to all. They feature music and story times for babies, toddlers and preschoolers, activities and book discussions for school-aged children, performances and events for families, and special programs for parents and caregivers.

► **eLibrary**

The Cambridge Public Library was the first library in the world to offer free, high speed internet access (beginning in 1994). This commitment to digital resources has not wavered. Each year, CPL hosts over 100,000 hours of free access to the Internet.

eLibrary services:

- Nearly 150 public access computers
- Free wireless access at all of our locations
- 24/7 access to the library catalog and your library account to reserve or renew materials
- Access to more than 30 electronic research databases
- On-site access to databases such as Ancestry.com
- Online reference assistance
- Desktop publishing and scanners (Main Library)
- Downloadable audio books
- Mango language instruction online
- State-of-the-art computer classrooms (Main and Central Square)
- Blog for Cambridge READS, Teen Room, and Cambridge Room
- Express Lane self-checkout (Main Library only)

► **Returns**

You may return library materials to any Cambridge Public Library location or other Minuteman member library. All locations have after hour return boxes.

► **Library Branch Locations:**
(See Website for hours)

Boudreau Branch

245 Concord Avenue

617-349-4017

Central Square Branch

(Temporarily closed for renovation)

45 Pearl Street

617-349-4010

Collins Branch

64 Aberdeen Avenue

617-349-4021

O'Connell Branch

48 Sixth Street

617-349-4021

O'Neill Branch

70 Rindge Avenue

617-349-4023

Valente Branch

826 Cambridge Street

617-349-4015



Your Cambridge Public Library card opens up a world of resources - from borrowing books and CDs to free admission at area museums.

PUBLIC TRANSPORTATION

▶ **Massachusetts Bay Transportation Authority (MBTA)**
800-392-6100, 617-222-3200
www.mbta.com

The Website includes tools for trip planning and access to real-time transit tracking applications, such as NextBus.

▶ **Bus Routes**

Fare is typically \$1.25 with CharlieCard. Includes free transfer to local bus, discounted transfer to subway & express bus. Some “zoned local” routes or longer rides cost more. Fare is \$1.50 with CharlieTicket or on-board. Includes free transfer to local bus.

▶ **Subway (the “T”)**

Cambridge is served by the red and green lines. Cambridge stations are: Alewife, Porter, Harvard, Central and Kendall on the red line, and Lechmere on the green line. With some exceptions, the fare is \$1.70 with CharlieCard (includes free transfer to local bus, discounted transfer to express bus). Fare is \$2 with CharlieTicket or cash.

▶ **Commuter Rail**

Beginning at North Station, the Fitchburg Line connects Porter Square with stops including Belmont, Concord, and Ayer, ending in Fitchburg.

▶ **Cambridge-North Station EZRide Shuttle**
617-8EZ-Info 617-517-9740 www.EZRide.info

A service of the Charles River Transportation Management Association (CRTMA). EZRide connects with the MBTA at North Station, Lechmere and Kendall Square, and with several Cambridge destinations such as the Galleria and University Park. It operates every 10 minutes during peak hours, Monday-Friday, except holidays. The fare is \$1.

REGISTRY OF MOTOR VEHICLES

▶ **Massachusetts Registry of Motor Vehicles (RMV)** 617-351-4500
www.massdot.state.ma.us/rmv

Boston RMV (full service) 630 Washington Street, Boston
Details such as hours of operation and services available at various branches, as well as current wait times, are available at the Website listed above by clicking on the “Quick Links” tab, followed by “Branch Info.”

▶ **Driver’s License**

If you have moved to Cambridge from out of state, you must obtain a Massachusetts driver’s license. Visit the RMV Website and click on “Convert my Out-of-State Driver’s License” to obtain an application and a list of the documents you will need to bring to an RMV office. If you have moved to Cambridge from elsewhere in the state, notify the Registry of your address change within 30 days.

▶ **Vehicle Registration**

You must register your vehicle in Massachusetts as soon as you become a Massachusetts resident. A full description of the registration process is provided at www.mass.gov/rmv/regs.

▶ **Vehicle Inspection**

Your vehicle must undergo a safety and emissions inspection within 7 days of registration. To find an inspection station in your area, visit www.mass.gov/rmv/stations, then click on “Mass Vehicle Check Inspection Station Locator.”

POST OFFICE

Post Office
800-275-8777 www.usps.com

Main Branch: Central Square,
770 Massachusetts Avenue

Branch Offices: Harvard Square, Porter Square, Kendall Square, Inman Square, East Cambridge and MIT

TRANSPORTATION RESOURCES

▶ **Accessible Cambridge Taxi (ACT)**
888-872-6721 www.brattlecourier.com

The City’s License Commission works with a dispatch service company that provides wheelchair-accessible taxicab service 24 hours a day, seven days a week. All Cambridge-based taxicab companies participate in the ACT program.

▶ **Cambridge Taxicab Companies**

Ambassador Brattle	617-492-1100
Cambridge Cab Company	617-776-5000
Checker Cab	617-497-9000
Classic Cab	617-492-0555
Star Taxi	617-876-8888
UTS Cab	617-661-2500
Yellow Cab	617-547-3000

▶ **Taxi Discount Coupons**

Taxi coupons are available for Cambridge residents who are elderly or have disabilities. Residents who are 60+ should call the Council on Aging at 617-349-6220 (voice) or 617-349-6050 (TTY). Residents with disabilities should call the Commission for Persons with Disabilities at 617-349-4692 (voice) or 617-492-0235 (TTY).

▶ **Car Sharing & Bicycle Delivery**

While not managed by the City of Cambridge, car sharing, hourly car rental and bicycle delivery businesses help keep Cambridge a walkable city, benefitting all of us. Some options include:

Connect by Hertz	www.connectbyhertz.com
eRideShare	www.erideshare.com
Metro Pedal Power	www.metrodpower.com
Relay Rides	www.relayrides.com
Zipcar	www.zipcar.com

▶ **Arts, Historical and Tourism Organizations**

Cambridge Art Association
617-876-0246 www.cambridgeart.org

Cambridge Arts Council (CAC)
617-349-4380 www.cambridgeartscouncil.org
For Street Performer permits, artist grants, public art commissions, cultural events and artist/performer resources.

Cambridge Artists Coop
617-868-4434 www.cambridgeartistscoop.com

Cambridge Center for Adult Education
617-547-6789 www.ccae.org

Cambridge Historical Commission
617-349-4683 www.cambridge.ma.gov/Historic
Administers historic districts and landmarks; provides technical assistance on historic preservation; and maintains an archive of the City's architectural and social history (researchers should call for an appointment). Grants are available for eligible low/moderate income homeowners and non-profit agencies with historic properties.

Cambridge Historical Society
617-547-4252 www.cambridgehistory.org

Cambridge Multicultural Arts Center
617-577-1400 www.cmacusa.org

Cambridge Office for Tourism
617-441-2884 www.cambridge-usa.org
Call for information on dining, entertainment, lodging, shopping, special events and more.

New School of Music
617-492-8105 www.cambridgemusic.org

▶ **Museums**

Gray Herbarium, Harvard
617-495-2365 www.huh.harvard.edu

Harvard University Art Museums
617-495-9400 www.artmuseums.harvard.edu
During the renovations, selected works from the Fogg, Busch-Reisinger, and Sackler collections are on display at the Arthur M. Sackler Museum.

Harvard Museum of Natural History
617-495-3045 www.hmn.harvard.edu

Longfellow National Historic Site
617-876-4491 www.nps.gov/long

MIT-List Visual Arts Center
617-253-4680 web.mit.edu/lvac

MIT Museum
617-253-9607 web.mit.edu/museum

Peabody Museum of Archaeology & Ethnology
617-496-1027 www.peabody.harvard.edu

▶ **Galleries**

AIB Gallery @ University Hall 617.585.6600
www.lesley.edu/aib/portfolio/index.html

Cambridge Arts Council Gallery
617-349-4380 344 Broadway
www.cambridgeartscouncil.org

Cambridge Multicultural Arts Center
617-577-1400 www.cmacusa.org

Chandler Gallery
617-349-6287

From Russia with Art Gallery
www.fromrussiawithart.org

Gallery 263
781-393-0000 www.gallery263.com

Out of the Blue Art Gallery
617-354-5287 www.outoftheblueartgallery.com

▶ **Theaters**

Actors' Shakespeare Project
617-547-1982 www.actorsshakespeareproject.org

American Repertory Theatre
617-547-8300 www.amrep.org

Brattle Theatre
617-876-6837 www.brattlefilm.org

Central Square Theater
617-576-9278 www.centralsquaretheater.org

ImprovBoston Theater
617-576-1253 www.improvboston.com

Sanders Theatre
Harvard Box Office: 617-496-2222

▶ **Community Television**

Cambridge Community Television (CCTV) Channels 9, 10, and 22
617-661-6900 www.cctvcambridge.org
Offering three community access cable channels, CCTV is a public forum for Cambridge residents, businesses and organizations.

Cambridge Educational Access Channels 98 and 99
www.cpsd.us/ceatv/channels.htm

Programming for Cambridge Public Schools. SMART TV98 cablecasts educational programs, original work from students, school events and more. CPS TV 99 offers school news and more.

CITY TV-8 (Municipal Channel) Channel 8 617-349-4296
www.cambridge.ma.gov/dept/cable.html
Provides both original and acquired programming drawn from and relating to the City of Cambridge. City Council meetings are broadcast live on Mondays and repeated during the week.

▶ Cambridge is full of wonderful resources that allow its citizens to help one another. Opportunities abound to volunteer or to receive services offered by this sampling of organizations. Consider making volunteering part of your regular routine.

American Friends Service Committee

2161 Massachusetts Avenue 617-661-6130 www.afsc.org

Breakthrough Cambridge

158 Spring Street 617-349-6647 www.breakthroughcambridge.org

Cambridge At Home

1770 Massachusetts Avenue 617-864-1715
www.cambridgeathome.org

Cambridge Camping Association

99 Bishop Richard Allen Dr. 617-864-0960 www.cambridgecamping.org

Cambridge Cares About AIDS

17 Sellers Street 617-661-3040 www.ccaa.org

Cambridge Community Center

5 Callender Street 617-547-6811 www.cambridgecommunitycenter.org

Cambridge Community Services 99 Bishop Allen Drive

617-876-5214 www.cambridgecommunity.org

Cambridge Economic Opportunity Committee

11 Inman Street 617-868-2900 www.ceoccambridge.org

Cambridge Family & Children's Service

60 Gore Street 617-876-4210 www.helpfamilies.org

Cambridge Family YMCA

820 Massachusetts Avenue 617-661-9622 www.cambymca.org

Cambridge Senior Volunteer Clearinghouse

42 Brattle Street 617-864-6688

Charles River Conservancy

4 Brattle Street 617-608-1410 www.charlesriverconservancy.org

Child Care Resource Center, Inc.

130 Bishop Allen Drive 617-547-1063 www.cccrcinc.org

Community Dispute Settlement Center

60 Gore Street 617-876-5376 www.communitydispute.org

Community Learning Center 19 Brookline Street

617-349-6363 www.cambridgema.gov/DHSP2/clc.cfm

Friends of Fresh Pond Reservation

250 Fresh Pond Parkway 617-349-6391 www.friendsoffreshpond.org

Homeowners Rehab Inc.

280 Franklin Street 617-868-4858 www.homeownersrehab.org

HomeStart, Inc.

678 Massachusetts Avenue, Suite 502 617-234-5340 www.homestart.org



The Friends of Fresh Pond organize public programs to support and enhance local education about the local environment. These women are participants in the Fern identification and drawing workshop.

Just-A-Start Corporation

1035 Cambridge Street #12
617-494-0444 www.justastart.org

Massachusetts Alliance of Portuguese Speakers

1046 Cambridge Street
617-864-7600 www.maps-inc.org

On the Rise 341 Broadway

617-497-7968 www.ontherise.org

St. James' Episcopal Church Food Pantry and Meal Program

1991 Massachusetts Avenue 617-876-4381

Salvation Army Shelter and Meals Program

402 Massachusetts Avenue 617-547-3400

Somerville-Cambridge Elder Services

61 Medford Street, Somerville
617-628-2601 www.eldercare.org

Wellmet Project

130 Bishop Allen Drive 617-491-2377
www.wellmetproject.com

The Women's Center

46 Pleasant Street 617-354-6394
www.cambridgewomenscenter.org

YWCA Cambridge

7 Temple Street 617-491-6050
www.ywcacam.org

► Here is a sampling of upcoming events in Cambridge. For additional information, visit www.cambridgema.gov.

May

- Water Week** 5/1 – 5/7
www.cambridgema.gov/CWD
 A week of tours and demonstrations by the Cambridge Water Department.
- MayFair in Harvard Square** 5/1
www.harvardsquare.com
 Noon – 6 p.m.
- Cambridge Holocaust Commemoration** 5/4
 Peace Commission 617-349-4694
www.cambridgema.gov/peace
 An interfaith evening of remembrance, readings, music and candle lighting. 7 – 9 p.m. at Temple Beth Shalom.
- Cambridge Science Festival Carnival** 5/7
www.cambridgesciencefestival.org
 Hands-on science exploration events for the whole family, including the Mini Maker Faire, NuVu Studio's Galactic Carnival, and Ocean FEST! Free. Cambridge Public Library, 449 Broadway. Noon – 4 p.m.
- Fresh Pond Day** 5/7
www.cambridgema.gov/CWD
 The culmination of water week is Fresh Pond Day at 250 Fresh Pond Parkway. Enjoy activities for all ages, including nature walks, water facility tours, demonstrations and displays. 10 a.m. – 2 p.m.
- Cambridge Open Studios**
- Open Studios East** 5/7 – 5/8
- Open Studios Central** 5/14 – 5/15
- Open Studios Northwest** 5/21 – 5/22
 Cambridge Arts Council www.cambridgeartscouncil.org
 Meet artists throughout Cambridge working in a range of mediums and purchase work directly from them. Free event. Noon to 6 p.m.
- National Public Works Week** 5/15 – 5/21
www.cambridgema.gov/TheWorks 617-349-4800
- Memorial Day Parade and Observance** 5/30
 Veterans' Services Department www.cambridgema.gov/vet
 Parade at 9:30 a.m. from Cambridge Common to Cambridge Cemetery. Observance at 11 a.m.

GoGreen Month www.cambridgema.gov/gogreen
 May is a month-long celebration of transportation options, recycling, and energy conservation. Events include Bike Week activities, commuter appreciation days, transportation fairs and presentation of the GoGreen Business awards for outstanding environmental efforts.

June

- Cambridge River Festival** 6/4
www.cambridgeartscouncil.org
 Featuring live music, visual arts, theatrical and dance performances, family entertainment, art-making activities and workshops, crafts, international food and more! Free. Memorial Drive, along the Charles River. Noon to 6 p.m.
- Household Hazardous Waste Collection** 6/4
 Cambridge Public Works www.cambridgema.gov/TheWorks
 NEW LOCATION: Parking Lot on Field St. at Fern St. by Danehy Park. Cambridge residents only; proof of residency required. 9 a.m. – 1 p.m.
- Dragon Boat Festival** 6/11 – 6/12
www.bostondragonboat.org
 A cultural event on the Charles River featuring dragon boat races, arts and crafts demonstrations, music, dance, martial arts and Asian foods. Free.

CAMBRIDGE OFFICE FOR TOURISM LAUNCHES NEW ONLINE EVENTS CALENDAR

www.cambridge-usa.org

The Cambridge Office for Tourism recently launched TRUMBA, a new calendar system on their Website. Bookmark the page to stay abreast of wonderful events in Cambridge throughout the year. You can also submit your own public events directly to the calendar by completing the simple online form; all submissions will be reviewed prior to posting).



CAMBRIDGE E-LINE

www.cambridgema.gov, see E-Line registration at top right

The City of Cambridge urges people who live or work in the city to sign up for Cambridge E-Line, a web-based subscription service that will send you an e-mail or text alert if a Snow Emergency Parking Ban is declared. Subscribers can also sign up to receive a weekly e-mail with the latest from the City's Website, as well as other alerts, such as street cleaning reminders and City publications.



FAMILY NIGHTS IN THE PARK – Featuring Screen on the Green July – Aug (Wednesday evenings)

Enjoy a family movie on a theater size screen. Also featuring jugglers, clowns and magicians. Movies begin at 7 p.m. For more information, call 617-349-6200.

7/13	Hoyt Field
7/20	Glacken Field
7/27	Rindge Field
8/3	Donnelly Field
8/10	Sennott Park
TBA	Greene•Rose Heritage Park

Dance for World Community 6/11
www.ballettheatre.org 617-354-7467
Showcase of ballet, hip hop, square dance and more. A free all-day, celebration of dance as a force for social change. Performances and classes: noon – 7 p.m.; dancing in the street: 7 p.m. – 10 p.m.

Hoops ‘N’ Health 6/18
Cambridge Health Alliance 617-665-3769
Annual basketball and flag football tournament and health fair. Free and open to the public. Hoyt Field (near corner of Western Ave. and Putnam Ave.). Rain date is Saturday, June 25.

Taste of Cambridge 6/23
www.tasteofcambridge.com
This food tasting extravaganza in the Charles Hotel courtyards features samples of food and drink from restaurants throughout the city. Tickets: \$50. 5:30 p.m.–8:30 p.m.

City of Cambridge Dance Party 6/24
www.cambridgema.com 617-349-4301
Dance in the street in front of City Hall at this Friday night dance party for the entire Cambridge community. 7 – 11 p.m.

Library Summer Reading Programs
www.cambridgema.gov/cpl 617-349-4409
Programs for all ages.

July

Summer in the City
www.cambridgearts council.org 617-349-4380
An array of multicultural and interactive performances throughout the City’s public spaces featuring dance, music, storytellers, theater and puppetry for children ages 4 – 11. Free and open to the public.

Family Nights in the Park Every Weds
Dept. of Human Services 617-349-6200
Movies and more in Cambridge parks. See box.

August

Summer in the City
www.cambridgearts council.org 617-349-4380
An array of performances. See July listing.

Cambridge Discovery Days 8/6 & 8/13
www.cambridgema.gov/historic/walks.html
617-349-4683
Explore historic and architectural Cambridge on informative walks and at events throughout Cambridge. Special events will mark the 150th anniversary of the start of the Civil War.

Family Nights in the Park Every Weds
Dept. of Human Services 617-349-6200
Movies and more in Cambridge parks. See box.

September

Cambridge Carnival TBA
A festive celebration rooted in African traditions and featuring a dazzling costume parade, music, dancing, food and more in Kendall Square.

Riversing 9/18
Charles River Conservancy and Revels www.revels.org
Thousands gather for a public sing celebrating the first day of fall along the Charles River at the Weeks Footbridge, 6 p.m.

Danehy Park Family Day 9/24
www.cambridgema.gov
Enjoy a fun-filled day of children’s amusement rides, arts and crafts, music and roving performers, plus free hot dogs, chips, sodas and T-shirts while supplies last! Free and open to the public from 11 a.m. – 4 p.m. Amusement rides, roving performers, Children’s stage. Free hot dogs, chips, soda, 11 a.m. – 4 p.m.

October

Household Hazardous Waste Collection 10/1
Cambridge Public Works www.cambridgema.gov/TheWorks
NEW LOCATION: Parking Lot on Field St. at Fern St. by Danehy Park. Cambridge residents only; proof of residency required. 9 a.m. – 1 p.m.

Oktoberfest 10/2
Harvard Square. Bus. Assoc. www.harvardsquare.com
Featuring live music, international food, a traditional beer garden, and excellent people watching. Held in Harvard Square from 12 – 6 p.m.

Candlelight Vigil for Domestic Violence Awareness Month 10/5
City of Cambridge 617-349-4697
Sponsored by the Women’s Commission, Cambridge Public Health, and Cambridge Police Department, this candlelight vigil on the steps of City Hall will commemorate and mourn those lost to domestic violence in 2011. Vigil begins at 6 p.m.

Head of the Charles Regatta 10/22 – 10/23
www.hocr.org 617-868-6200
The world’s largest 2-day regatta attracts more than 8,000 racers from around the world. The races take place along the Charles River, from 8 a.m. – 4:30 p.m. beginning at the BU Bridge.

November

Family Literacy Fun Day 11/5
Dept. of Human Services 617-349-6200
A day of fun activities for families, including: book making, face painting, literacy games, puppet making, sing-alongs, story tellers, giveaways, and a magician. From 10:30 a.m. – 2:30 p.m. at City Hall.

Municipal Election 11/8
www.cambridgema.gov/election 617-349-4361
Call or visit the Election Commission for registration information and polling locations.

Veterans’ Day Observance 11/11
Cambridge Veteran’s Services www.cambridgema.gov/VET
Join us in the Cambridge Cemetery at 11 a.m. as we gather to honor our veterans, past and present, for their service to our country.

December

SparkleFest 11/26 – 12/31
www.harvardsquare.com 617-491-3434
A month-long celebration of the holiday season with various events in Harvard Square.

Holly Fair 2010 12/10 – 12/11
www.ccae.org/hollyfair.html 617-547-6789
Celebrate the holiday season at Cambridge’s oldest crafts fair – held at Cambridge Center for Adult Education, 42 Brattle Street, Harvard Square. Sat. 10 a.m. – 5:30 p.m.; Sun. Noon – 5 p.m.



CITY OF CAMBRIDGE

795 Massachusetts Avenue, Cambridge, MA 02139
www.cambridgema.gov | 617.349.4000 | 617.349.4242 TTY

City Manager **Robert W. Healy**
Deputy City Manager **Richard C. Rossi**

City Council

Mayor **David P. Maher** Councillor **Kenneth E. Reeves**
Vice Mayor **Henrietta Davis** Councillor **Sam Seidel**
Councillor **Leland Cheung** Councillor **E. Denise Simmons**
Councillor **Marjorie C. Decker** Councillor **Timothy J. Toomey, Jr.**
Councillor **Craig A. Kelley**



Fuller



CharlesDanielsPhotography

JOIN US IN THE CITY

COME TO EAT, COME TO DANCE, COME TO PLAY

32nd CAMBRIDGE RIVER FESTIVAL

A celebration of the arts and summertime fun
along the Charles River
June 4, 2011 Noon – 6 p.m.
www.cambridgeartscouncil.org
(617) 349-4380

CITY OF CAMBRIDGE DANCE PARTY

Dance in the street in front of City Hall at this
Friday night dance party for all of Cambridge.
June 24, 2011 7 – 11 p.m.
www.cambridgema.gov
(617) 349-4301

SUMMER IN THE CITY

A mix of dance, song, storytelling, theater and
puppetry presented in City parks and public spaces.
July and August, 2011
www.cambridgeartscouncil.org
(617) 349-4380

DANEHY PARK FAMILY DAY

Enjoy crafts, amusement rides, free hot dogs
and sodas, music, performers and more!
September 24, 2011 11 a.m. – 4 p.m.
www.cambridgema.gov
(617) 349-4301



Ines Hidalgo



Iní Tomeu