

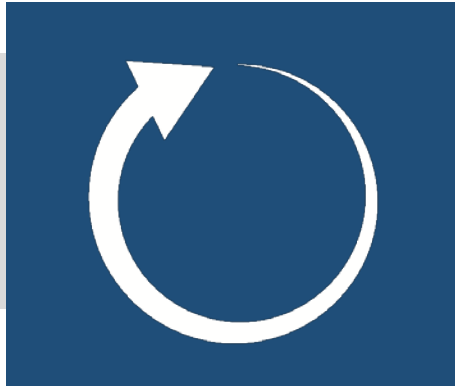
INMAN SQUARE INTERSECTION IMPROVEMENTS PROJECT



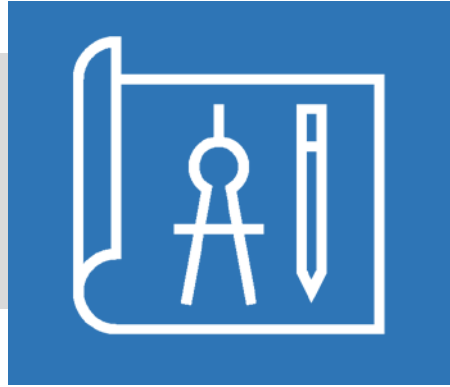
Community Meeting #6 | October 24, 2018



Meeting Agenda



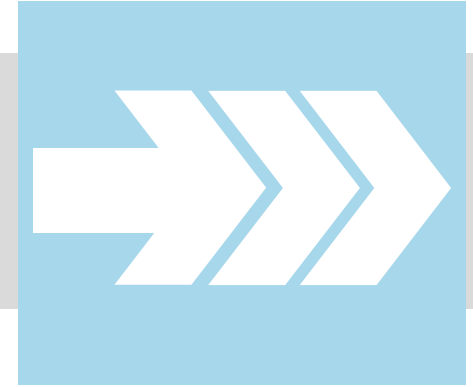
**Project
Background /
Timeline**



**Plaza Design
Update**



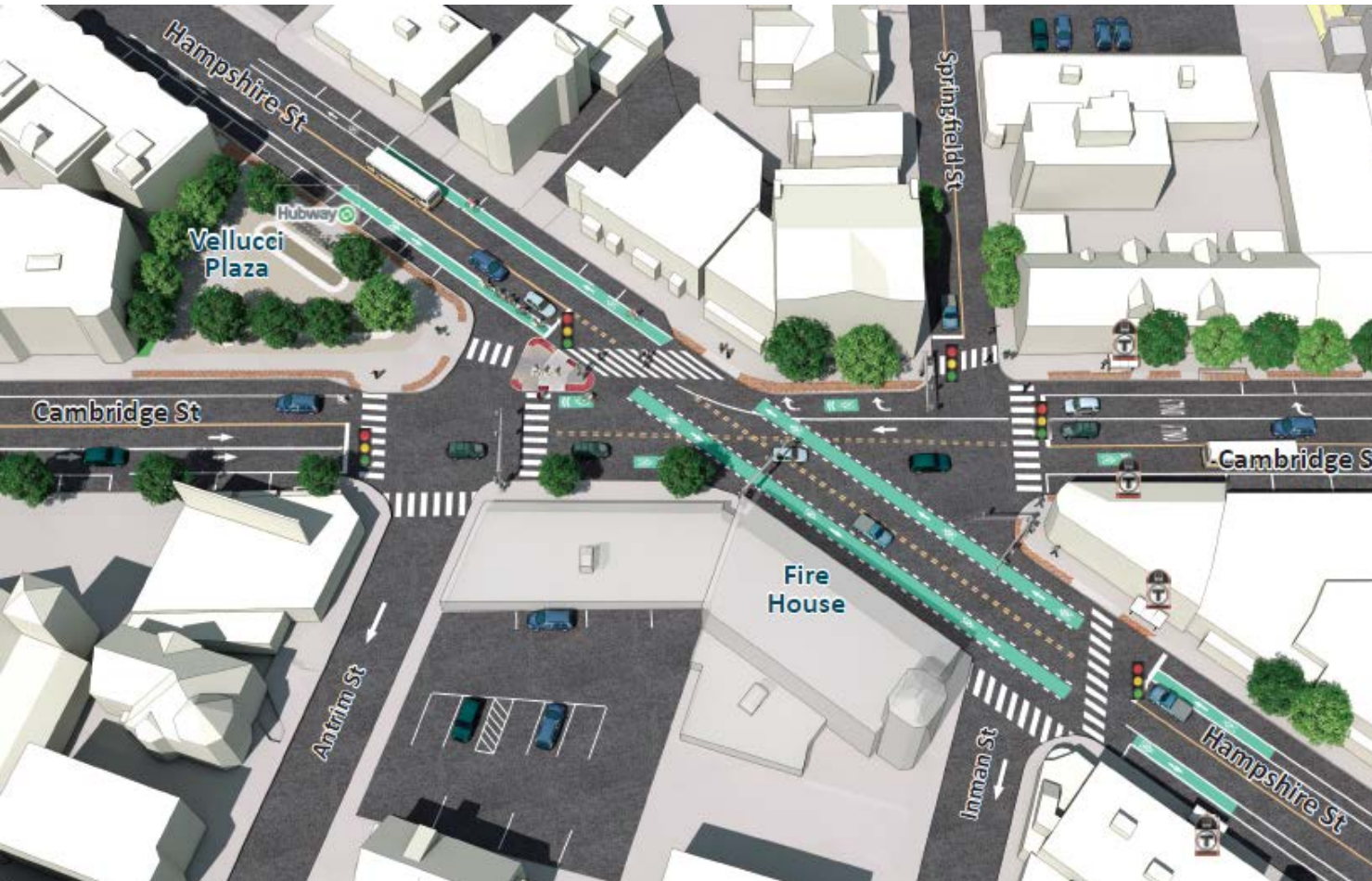
**Public Artwork
Update**



**Next Steps &
Group Feedback**



Existing Conditions



1. High crash location. 2008 – 2012, 69 total crashes in 5 years (exceeds MassDOT avg. statewide crash rate). 15 bicycle involved; 5 pedestrian involved.
2. Crosswalks outside of desire lines and some not signal controlled
3. Long distance for pedestrians and bikes to travel
4. No signal control for Hampshire Street Southbound turn to Antrim Street
5. Issues with clearance time for all users

Project Goals

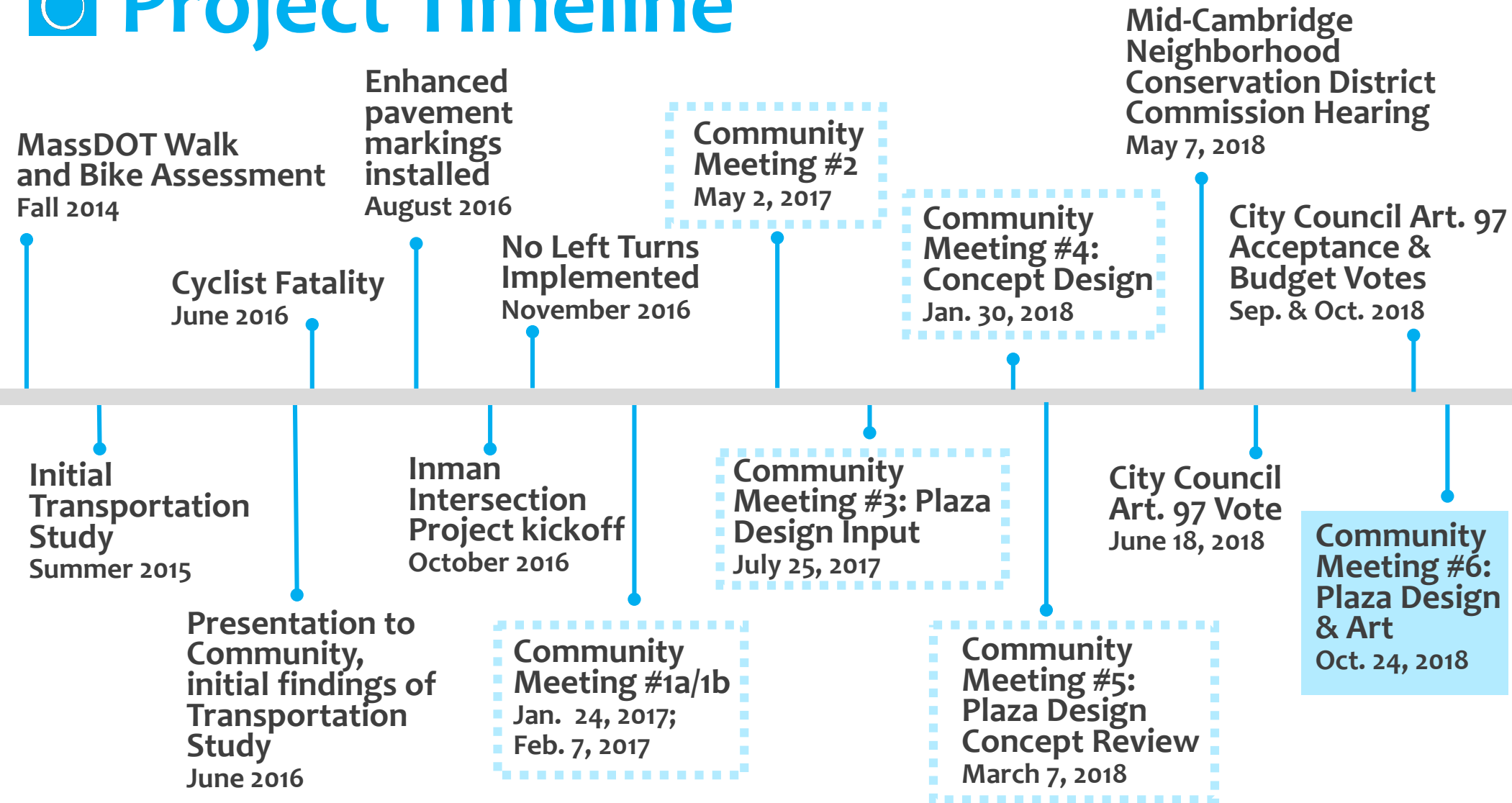


Primary Goal: Improve safety for all users in line with City's commitment to Vision Zero.

Opportunity to also improve plaza, support local businesses, maintain truck & Fire Dept. access.



Project Timeline



Note: Separate from the above noted community meetings, the City has met with various stakeholder groups and held various open houses for the community

Plan



Plaza Concepts



Concept 1: Eddy



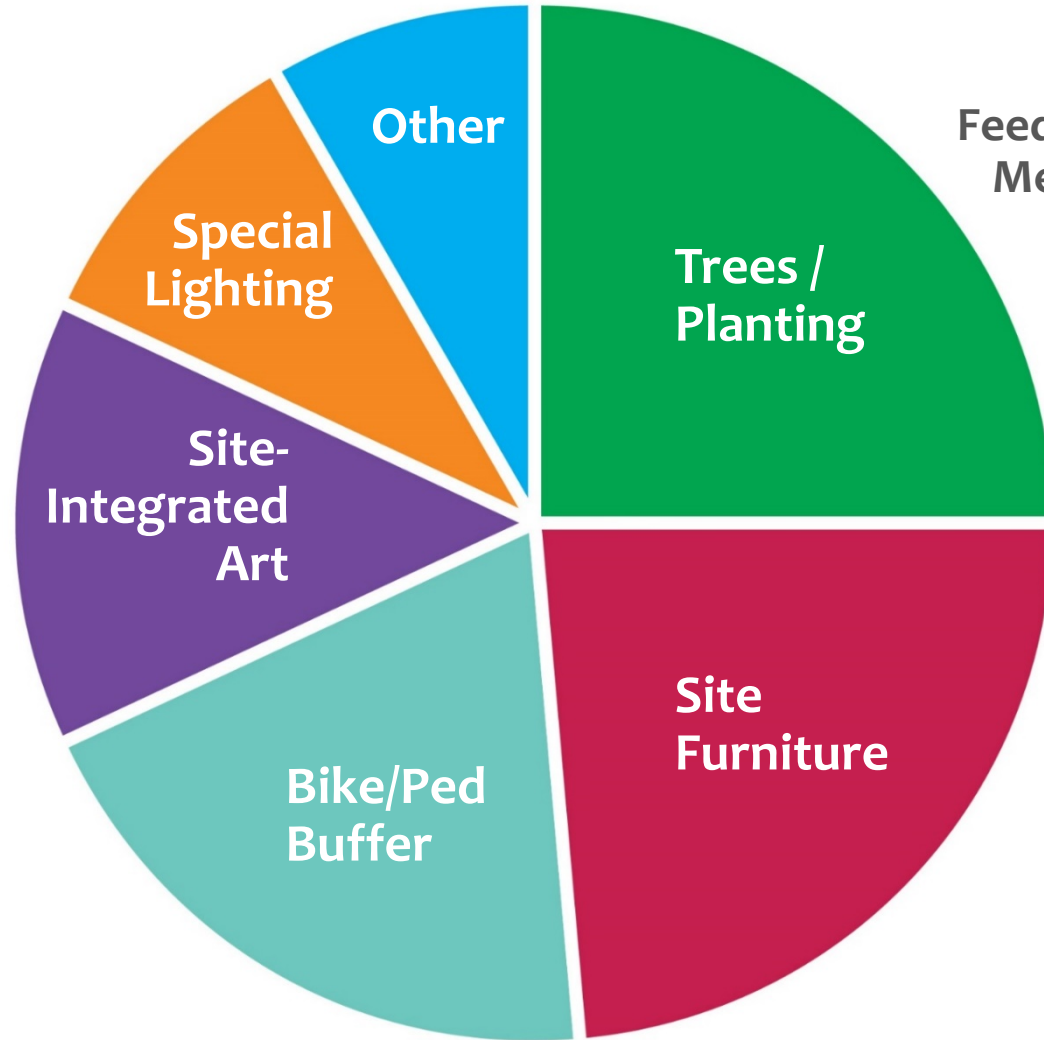
Concept 2: Puzzle



Concept 3: Wedge

Community Feedback

**Preferred Plaza
Design Features**
Feedback from Community
Meeting #3 – July 25, 2017





Plaza Design





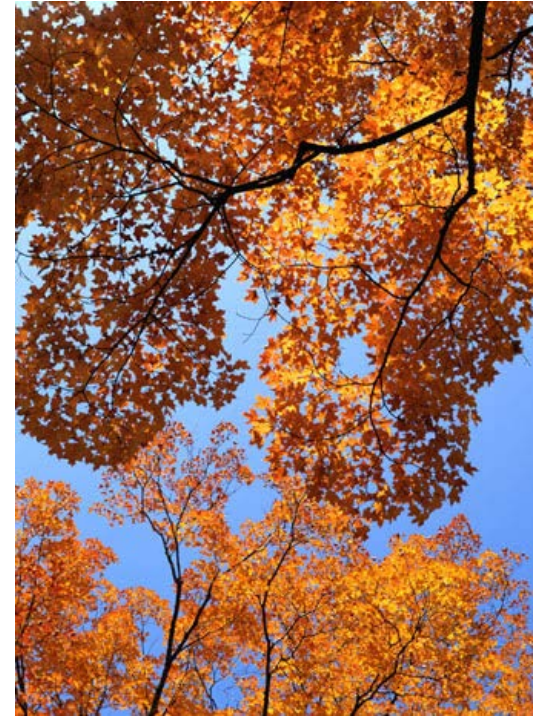
Cambridge Street - Inman Square



Character & Identity



Plaza Character





Public Art

www.markreigelman.com



Blue Birds, Cleveland



Grand Picnic, Case Western



Up River, Down River, Louisville



Stair Squares, NY



The Meeting House, Boston



Memorialization



- Bust to remain on west side per Family Request
- Additional signage on east side

Recognition of Mayor Vellucci

Memorialization



Recognition of Mayor Vellucci

Memorialization



Alfred E. Vellucci - Bust →

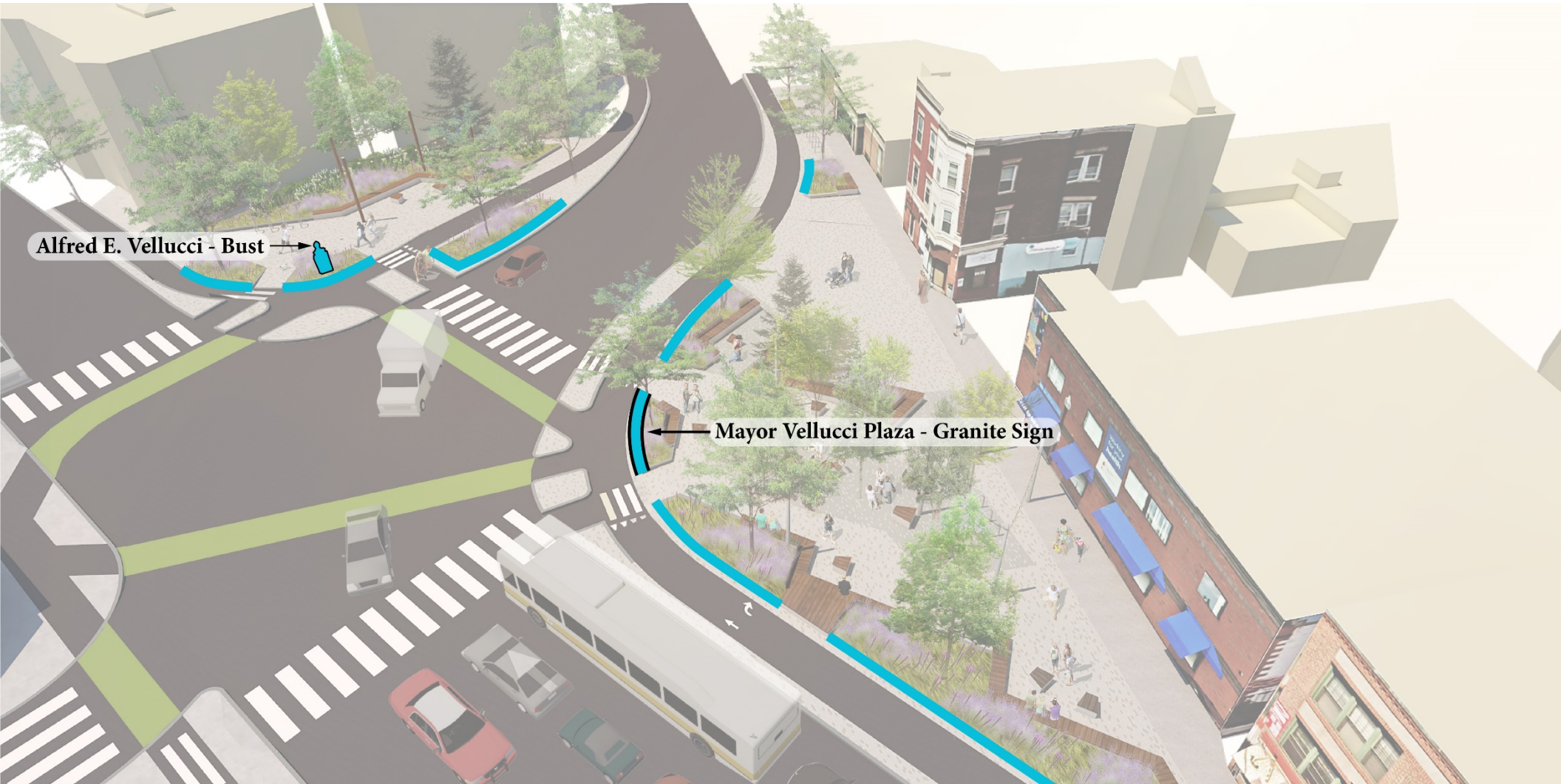
Recognition of Mayor Vellucci

Memorialization



Recognition of Mayor Vellucci

Memorialization



Recognition of Mayor Vellucci

Memorialization



Recognition of Mayor Vellucci



Plaza Design



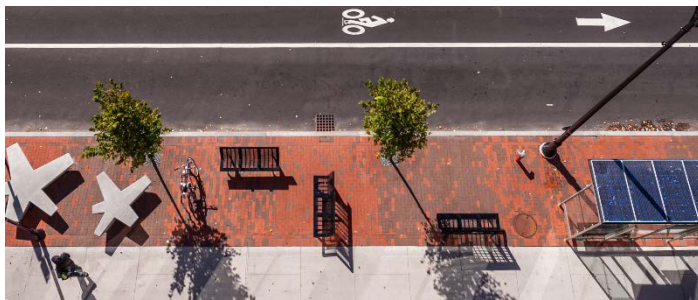


Plaza Design



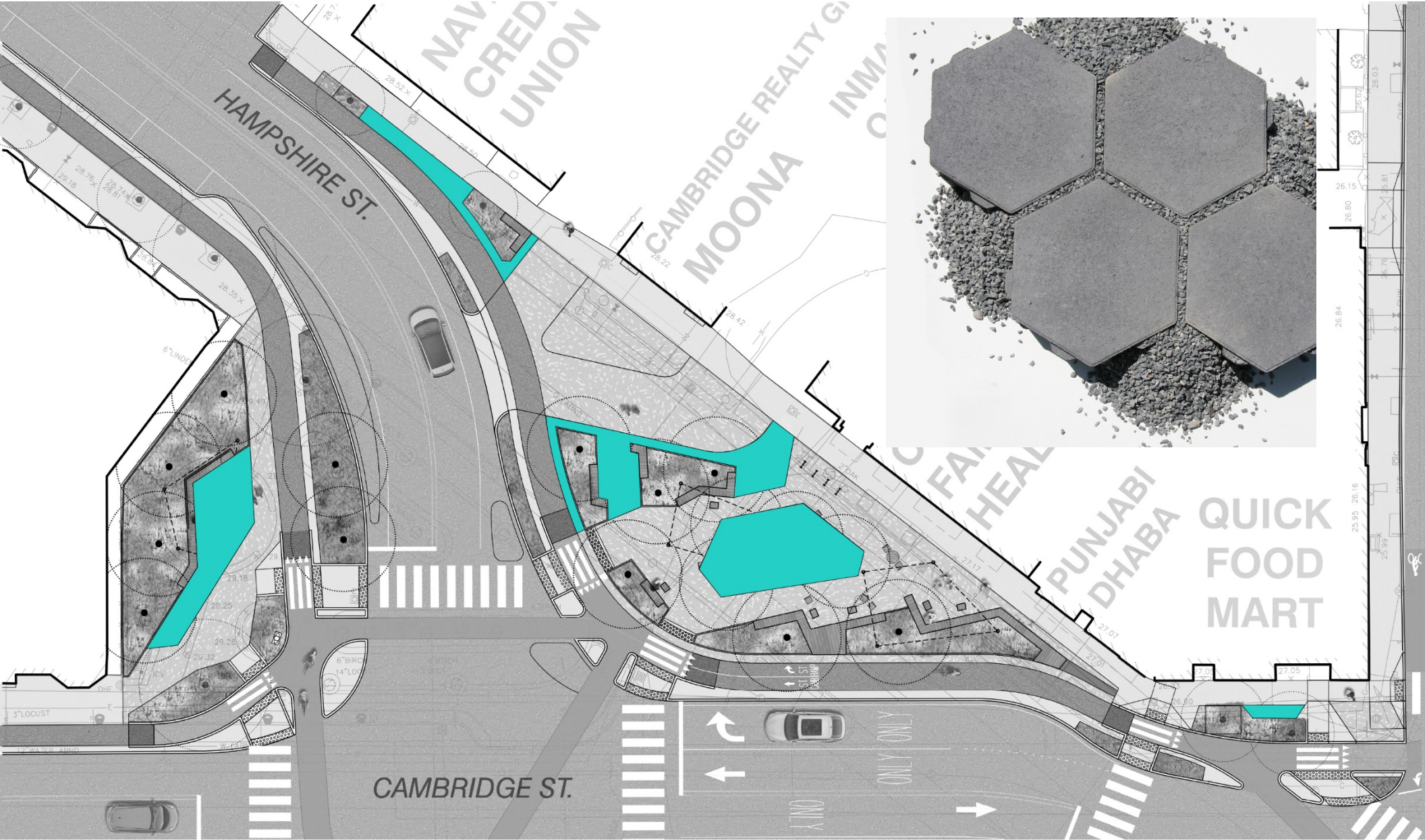
1. Bike Rack
2. Permeable Unit Pavers
3. Non-Permeable Unit Pavers
4. Drivable Unit Pavers
5. Curbed Planter
6. Movable Cafe Tables/Chairs
7. Wood Ottoman
8. Wood Bench
9. Festoon Lighting
10. Bust of Mayor Vellucci
11. Buffer Planting

Patterned Pavement



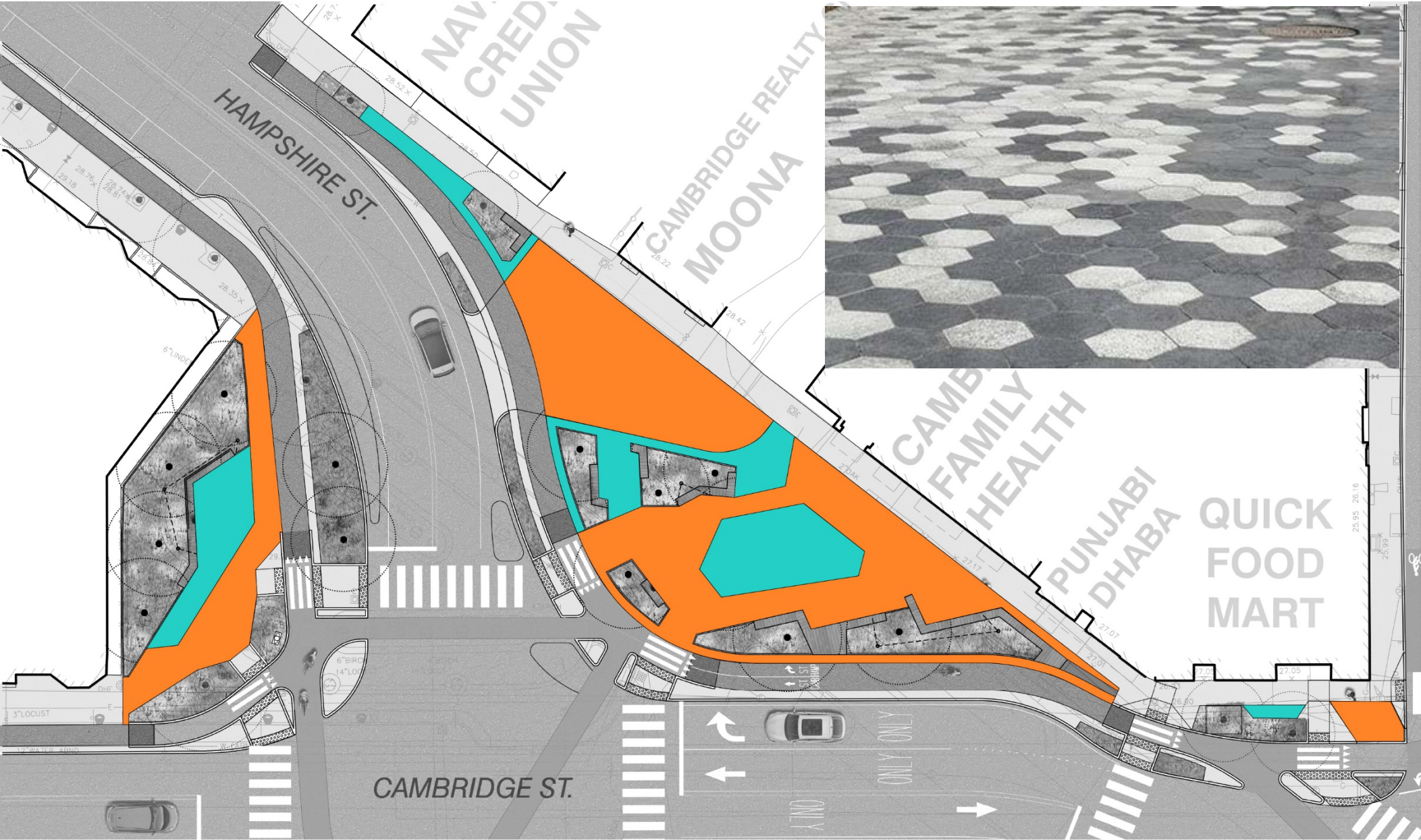


Plaza Pavers – Permeable Pavers





Plaza Pavers – Non-Perm Pavers

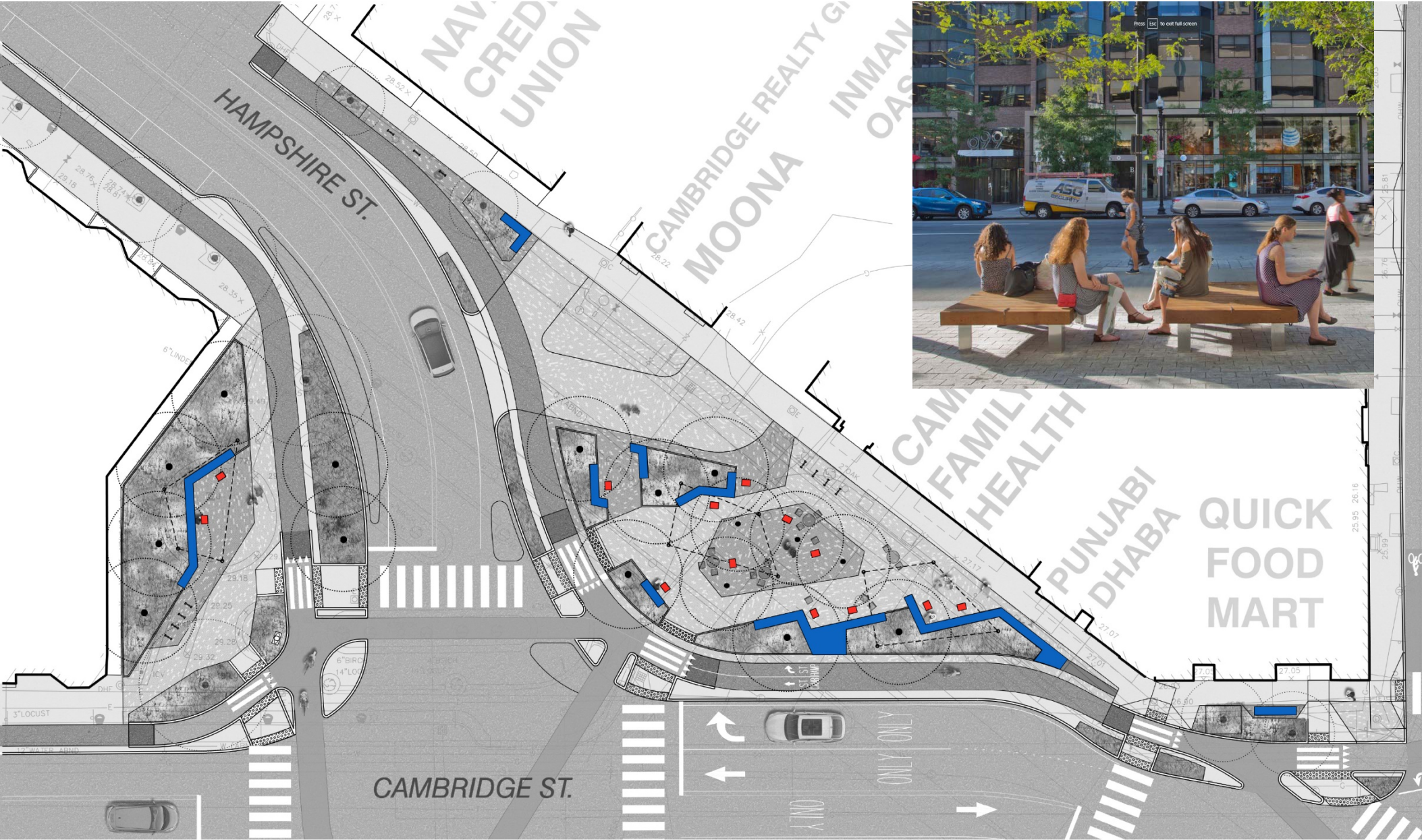




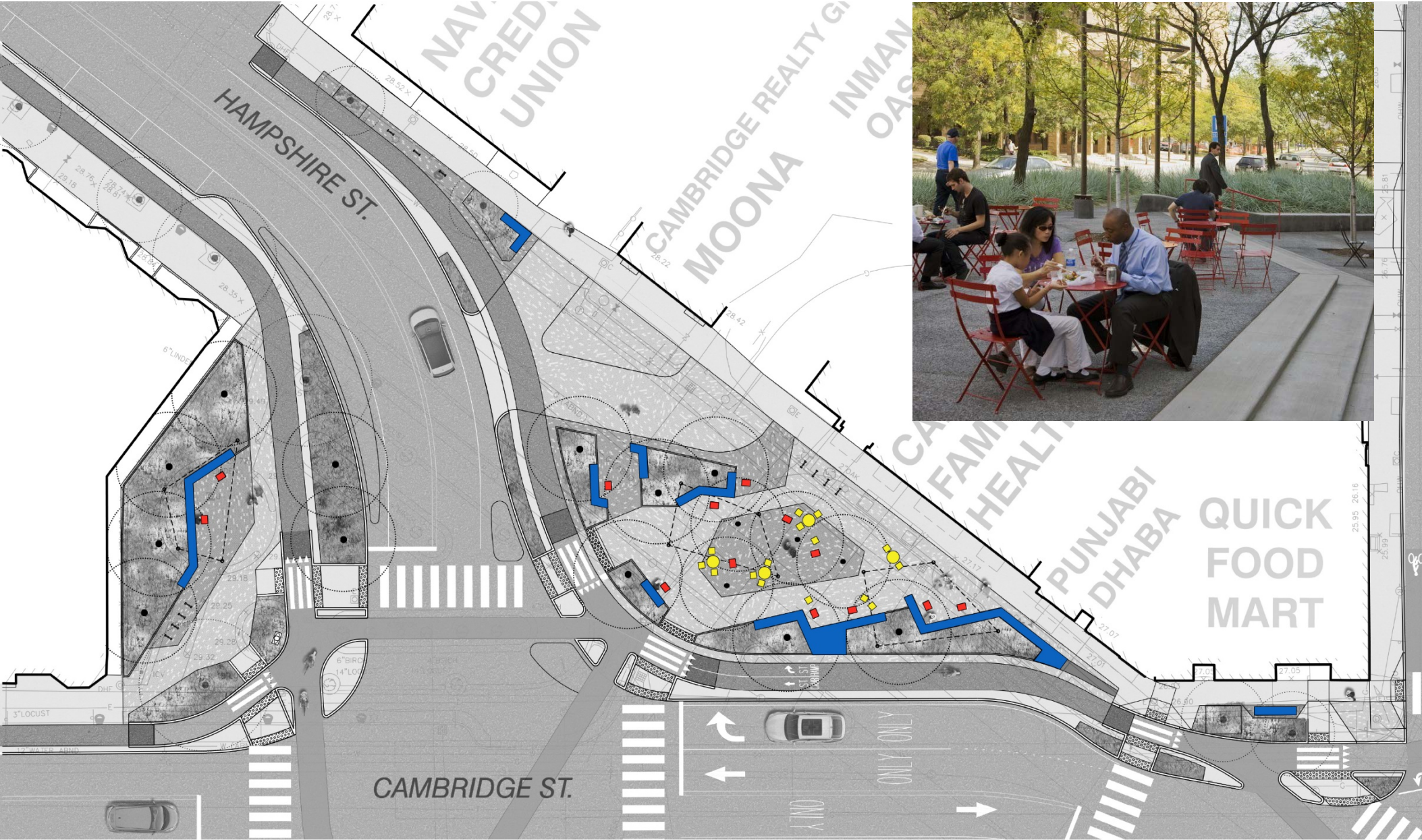
Plaza Furniture – Fixed Bench



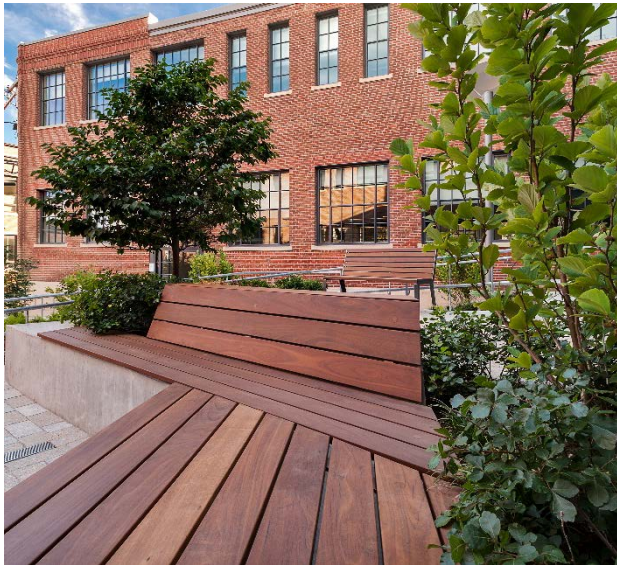
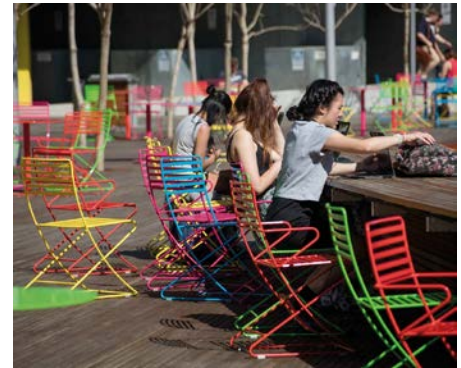
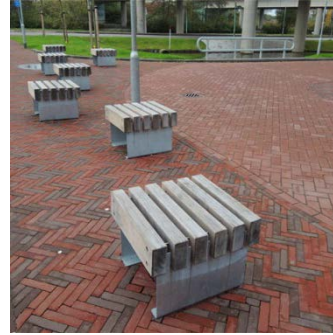
Plaza Furniture – Ottomans



Plaza Furniture – Movable



Furniture



Plaza Lighting – Festoon

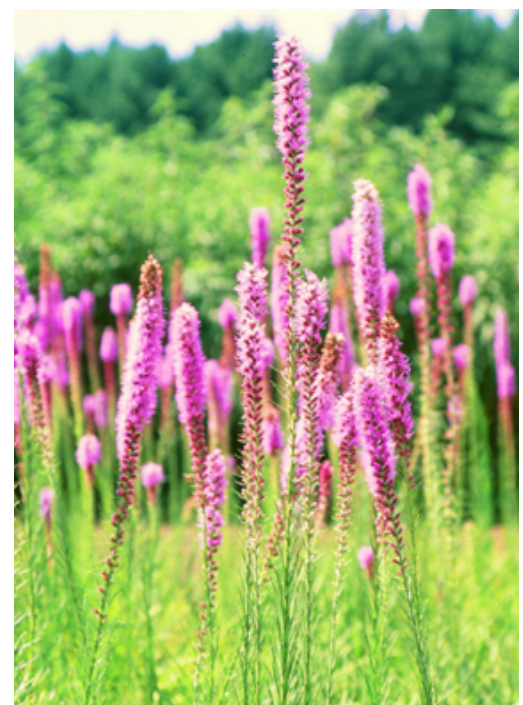
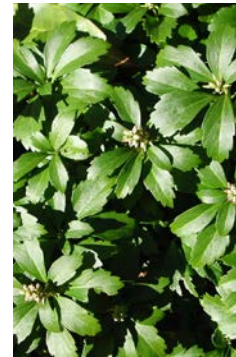




Plaza Planting – Perennials



Plantings – Perennials





Plaza Planting – New Trees





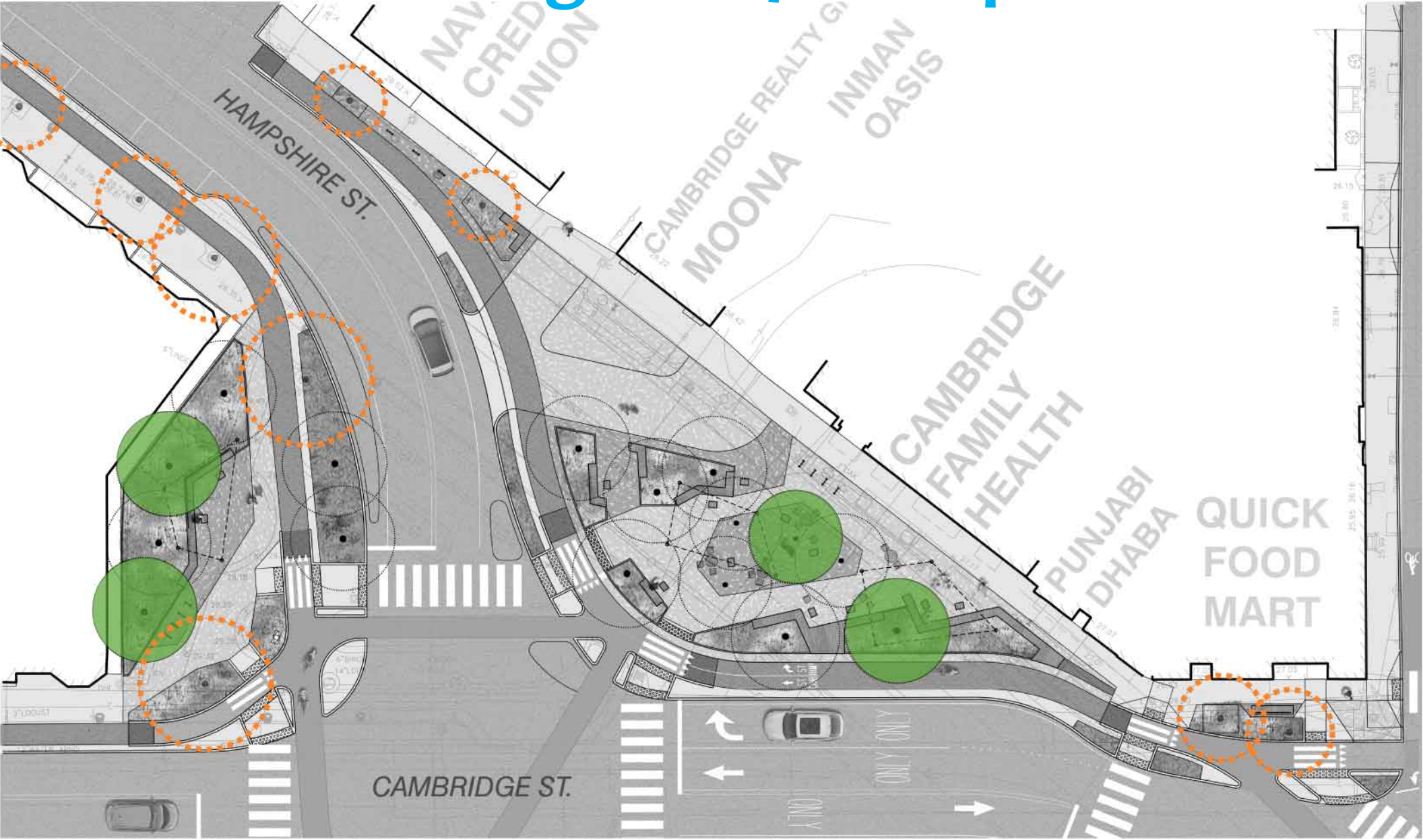
Plaza Planting – Existing Trees



Plaza Planting – New Trees



Plaza Planting – 6”-7” Caliper Trees



Plaza Planting – 4”- 5 1/2” Caliper Trees



Plaza Planting – 2”- 3 1/2” Caliper Trees

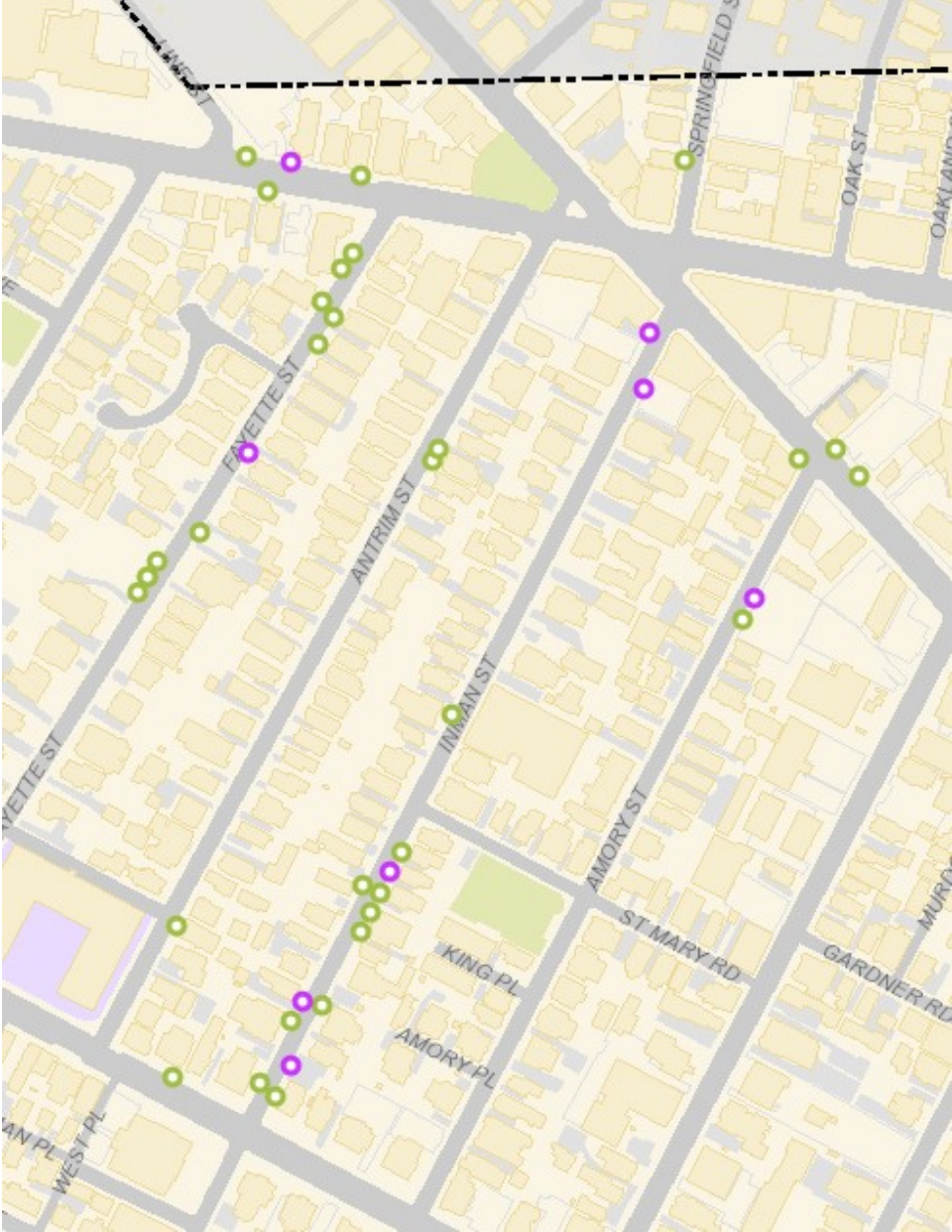


Plantings – Trees





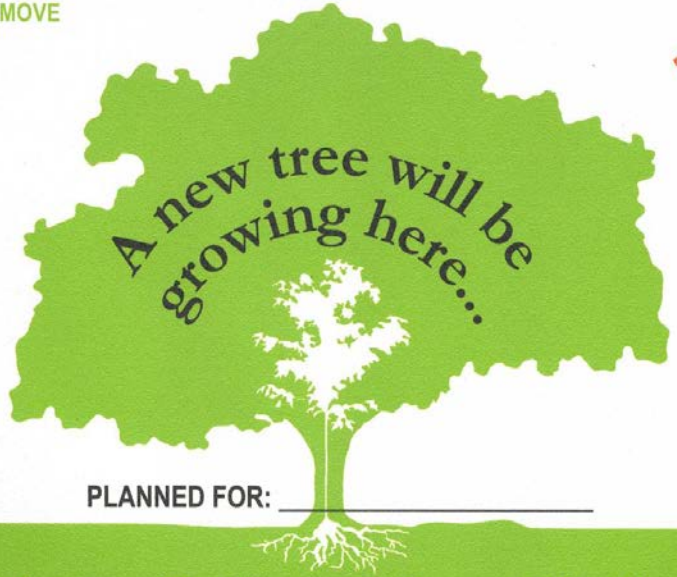
Additional Trees – Inman Area



Map of potential tree locations

DO NOT REMOVE

THE WORKS
CAMBRIDGE DEPARTMENT OF PUBLIC WORKS



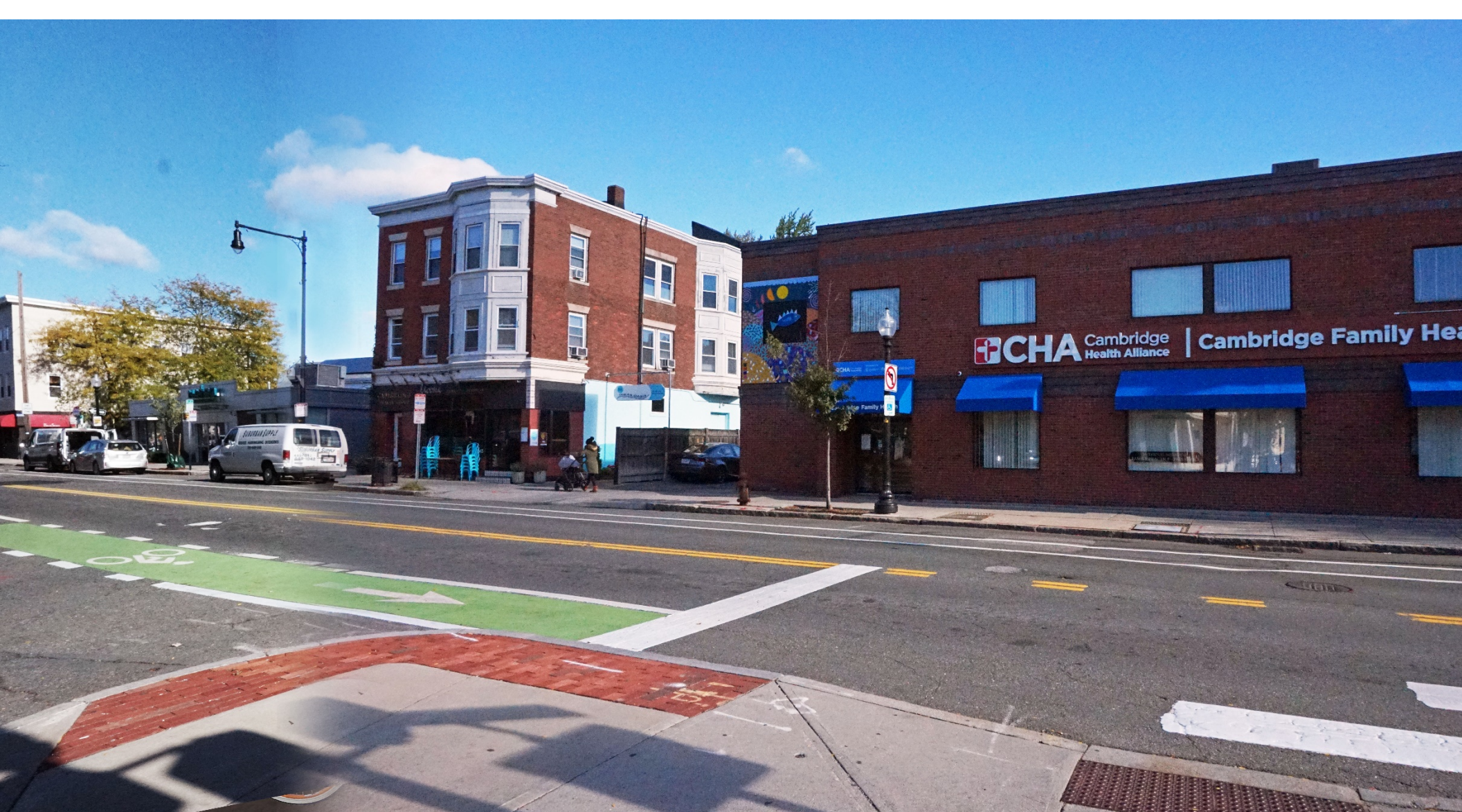
PLANNED FOR: _____

...And once it's planted, it won't be leaving!
QUESTIONS OR CONCERNS PRIOR TO PLANTING? CONTACT PUBLIC WORKS

W: www.cambridgema.gov/tree P: 617.349.4885 E: cambridgetree@cambridgema.gov

Plaza Design





CHA Cambridge Health Alliance | Cambridge Family Health

COMMUNITY SERVICES
100 WASHINGTON STREET
CAMBRIDGE, MA 02139
617.452.1234



CHA
Cambridge Family Health















Public Art

www.markreigelman.com



Blue Birds, Cleveland



Grand Picnic, Case Western



Up River, Down River, Louisville



Stair Squares, NY



The Meeting House, Boston

A historical black and white photograph of Cambridge, Massachusetts, showing Inman Square. The square is a wide, open area with a cobblestone or brick-paved surface. In the background, a large, multi-story brick building with a prominent steeple is visible. The steeple is tall and has a small arched opening near the top. To the left, there are several smaller buildings, some with awnings. In the foreground, there are some structures that appear to be part of a market or a public square, possibly a covered walkway or a series of stalls. The overall scene is a busy urban square from a past era.

CAMBRIDGE

INMAN SQUARE

RESEARCH & SCHEMATIC ARTWORK PROPOSAL / MARK REIGEL MARCH

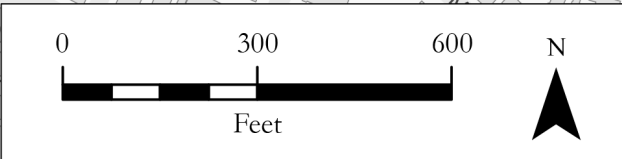
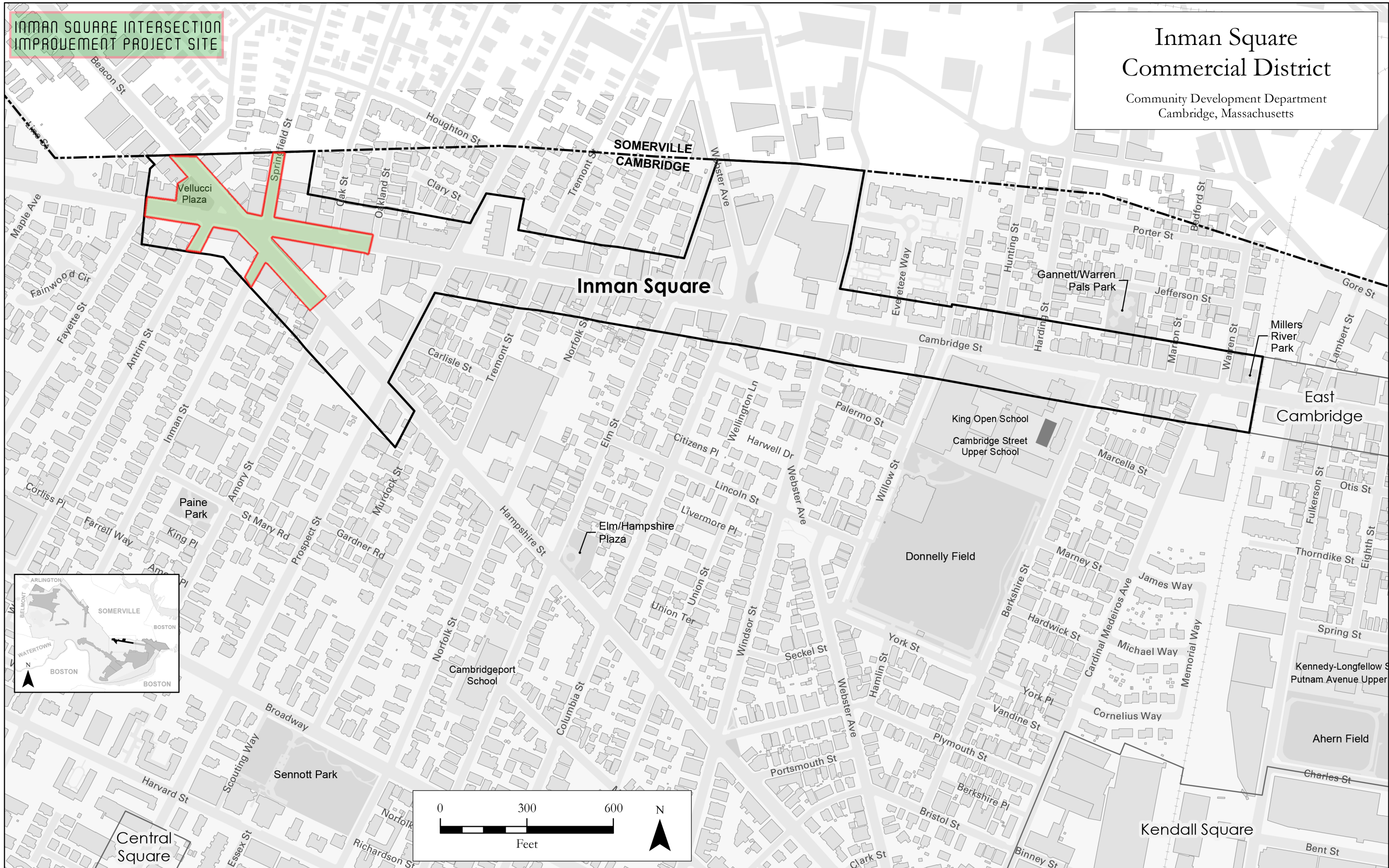
SITE OVERVIEW

INMAN SQUARE AREA

**INMAN SQUARE INTERSECTION
IMPROVEMENT PROJECT SITE**

Inman Square Commercial District

Community Development Department
Cambridge, Massachusetts







EXISTING PUBLIC ART

LANDSCAPE ARCHITECTURE PROPOSAL

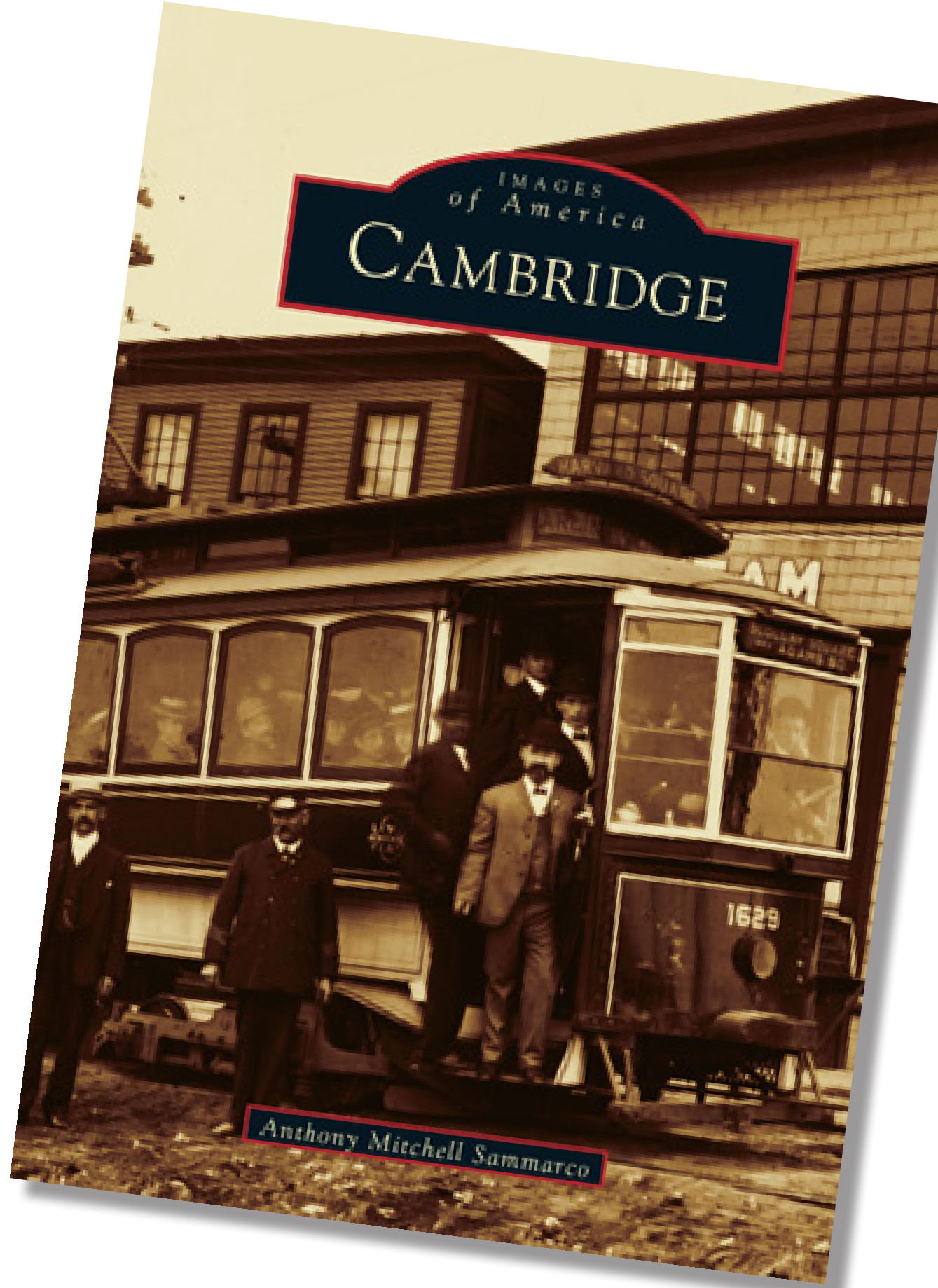
INMAN SQUARE AREA



SITE RESEARCH

INMAN SQUARE AREA

IMAGES
of America
CAMBRIDGE



Anthony Mitchell Sammarco

CITY OF CAMBRIDGE

MIDDLESEX COUNTY, MASSACHUSETTS

BY H.F. WALLING.

Civil Engineer.

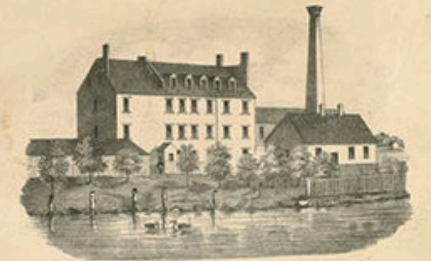
1854

Engraved on stone by Friend & Aul, 80, Walnut St. Philad.

PUBLISHED BY GEO. L. DIN, 15, JOY'S BUILDING, BOSTON



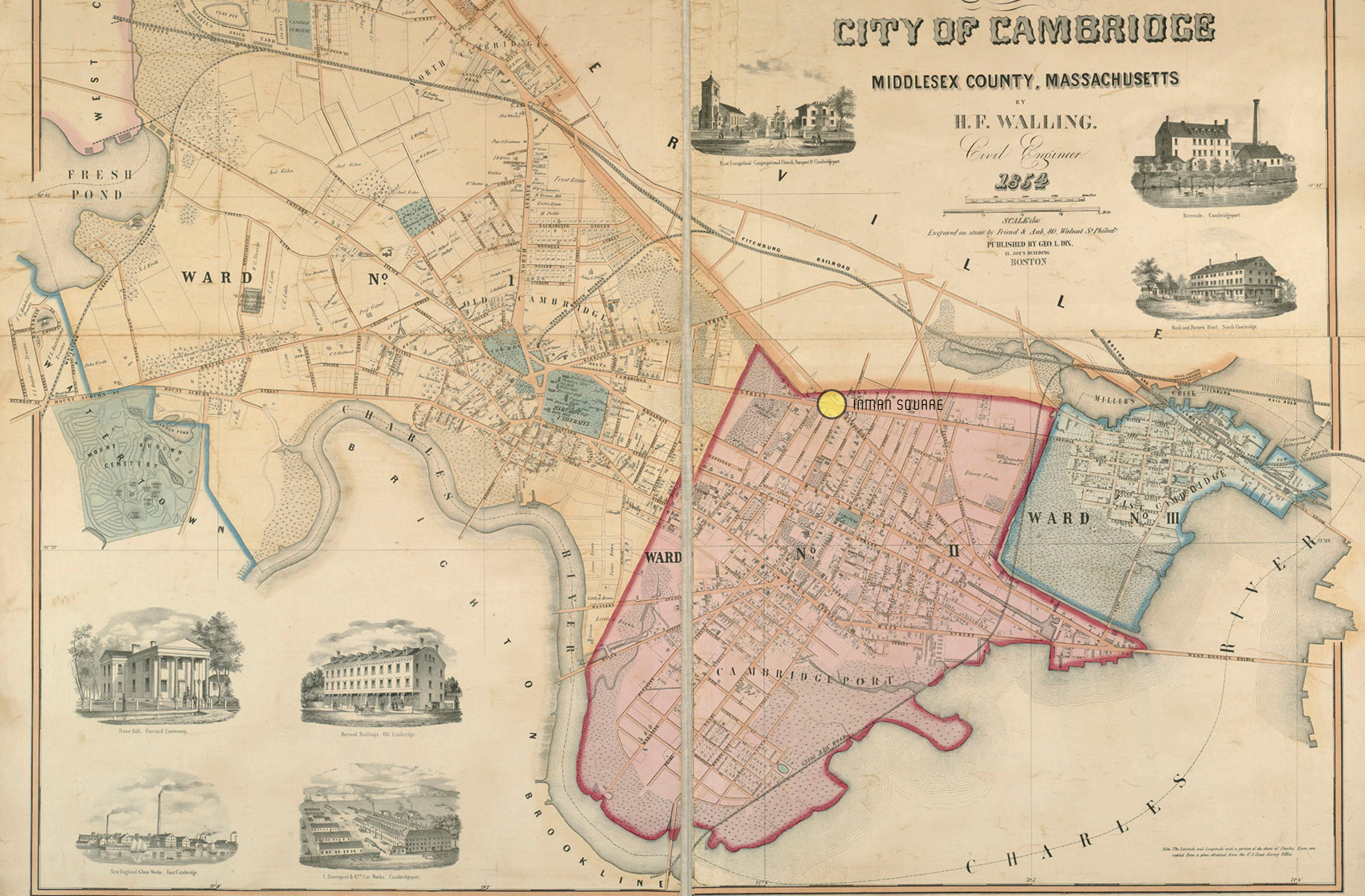
First Evangelical Congregational Church, Prospect St. Cambridgeport



Riverside, Cambridgeport



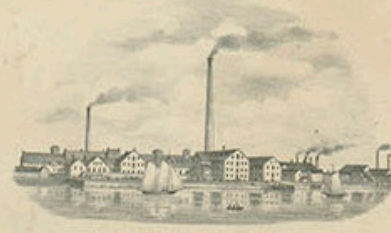
Bank and Porter's Hotel, North Cambridge



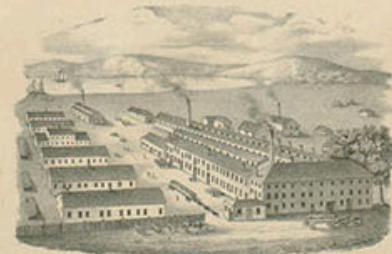
Dane Hall, Harvard University



Harvard Buildings, Old Cambridge



New England Glass Works, East Cambridge



C. Deavenport & Co's Car Works, Cambridgeport

Also The Latitude and Longitude with a portion of the shore of Charles River are copied from a plan obtained from the U.S. Coast Survey Office

Entered according to Act of Congress, by H. F. Walling in the Clerk's Office of the District of Massachusetts

HARVARD SQUARE; 1856



INMAN SQUARE; 1890



CRAIGE BRIDGE; 1910



HARVARD SQUARE; 1912





NEW ENGLAND GLASS COMPANY



CAMBRIDGE INDUSTRIAL LABOR



CARTER'S INK COMPANY

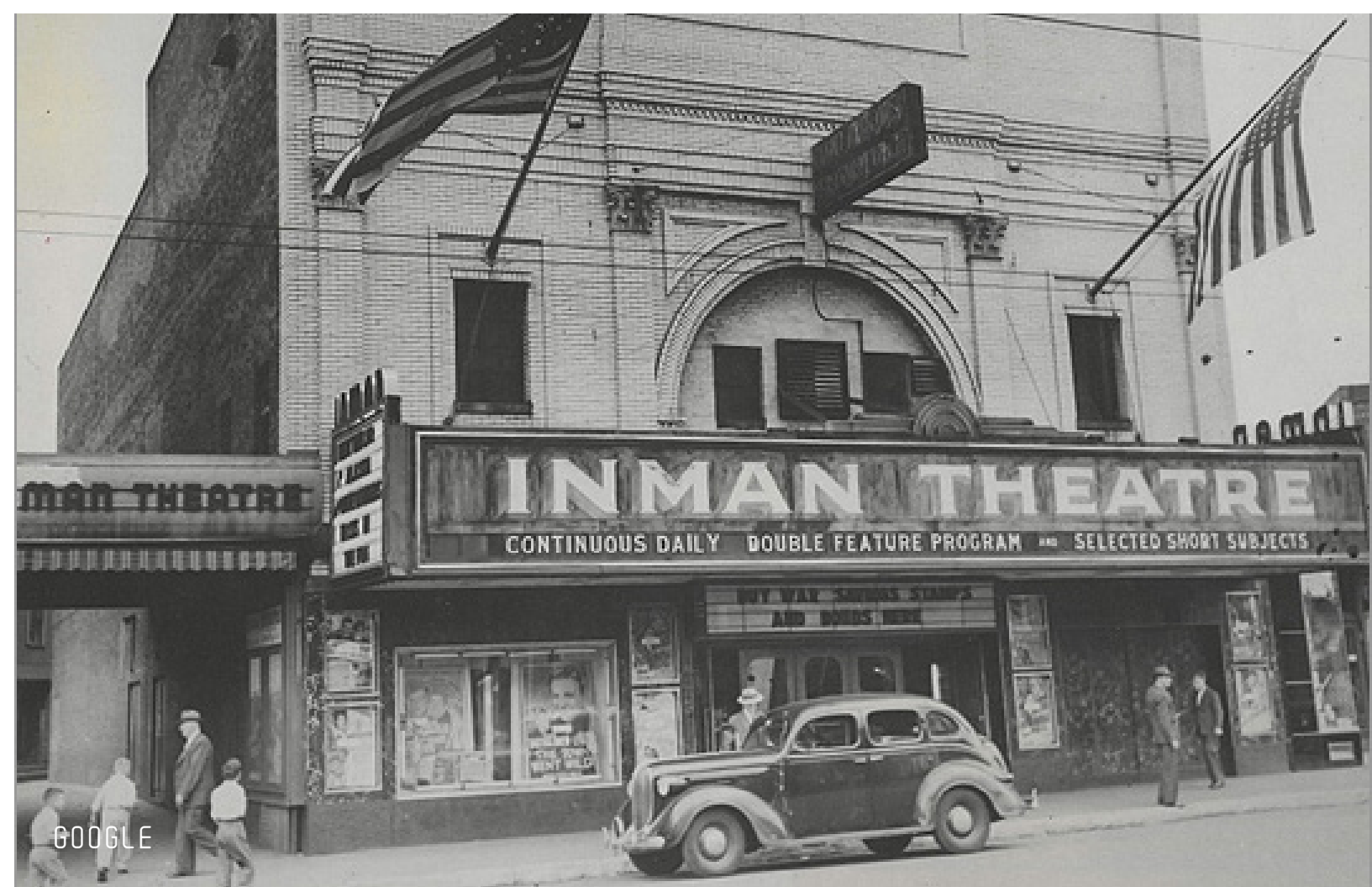
Home Office and Factory of
The Carter's Ink Company
Cambridge C. Boston, Mass.
INDUSTRY IN CAMBRIDGE



HOOD'S ICE CREAM COMPANY



INMAN SQUARE; CULTURE AND COMMERCE



GOOGLE

MAYFLOWER



PIPING PLOVER



BIGLEAF PERIWINKLE



WHITETAIL DEER



NATURE AND INDUSTRY

"EDGE OF WILDERNESS"

VARIOUS MODES OF TRANSPORTATION

"A LITTLE OUT OF THE WAY"

ATWOODS CORNER / AT THE WOOD

INTERSECTION / TRANSPORT

GATEWAY TO AREA

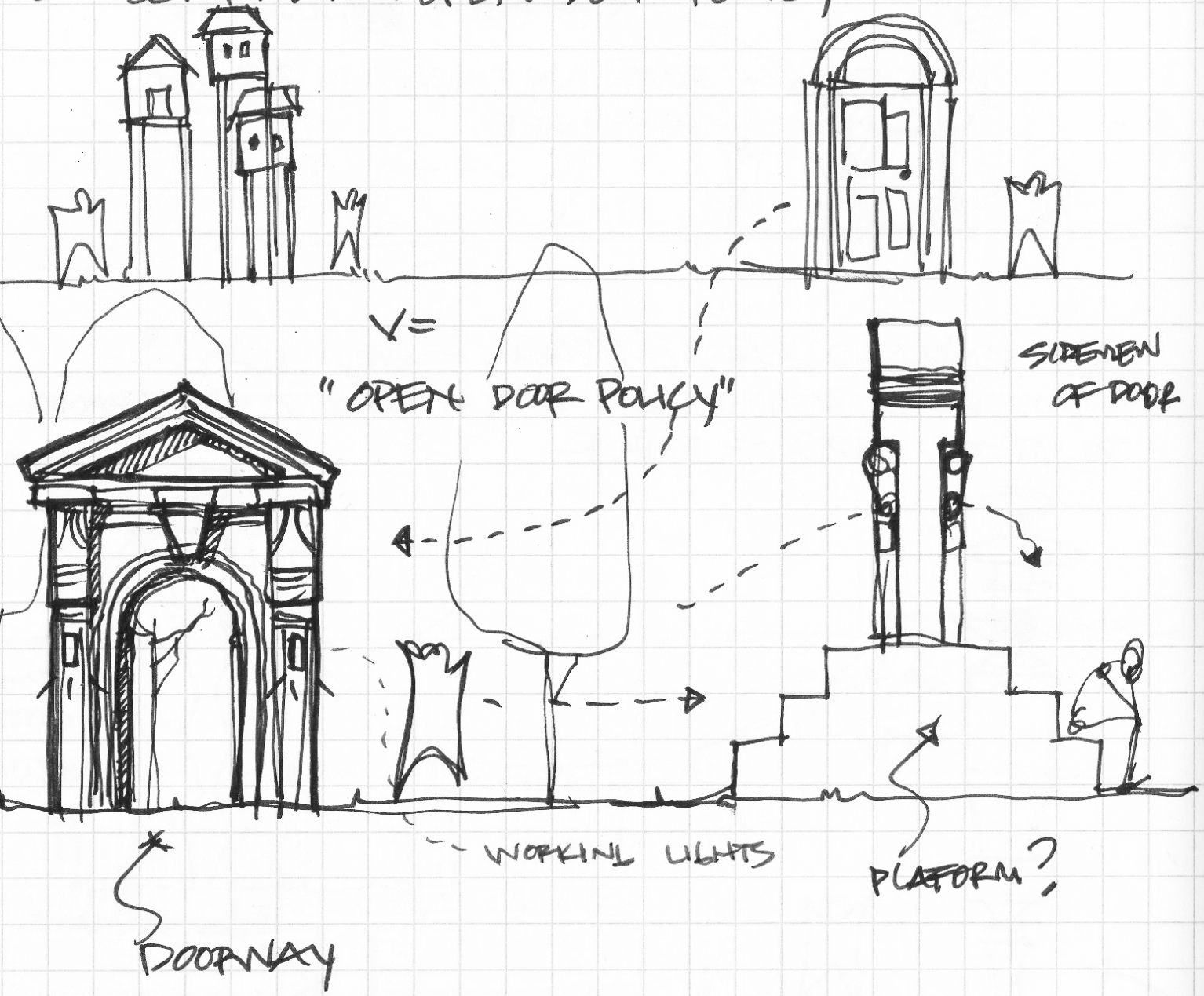
PROGRESSIVE IDEALS

MEMORABLE EXPERIENCE

URBAN CENTER

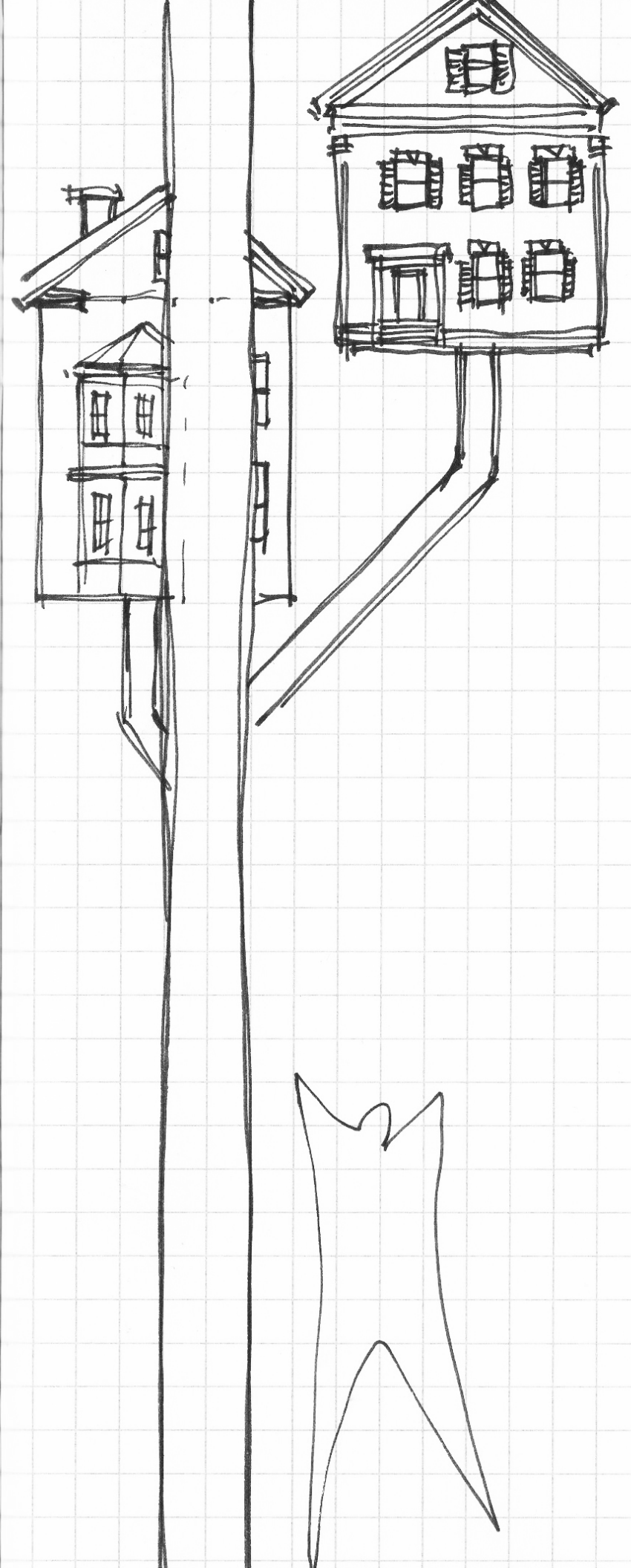
CONCEPT SKETCHES

VELLUCI HAD AN OPEN DOOR POLICY

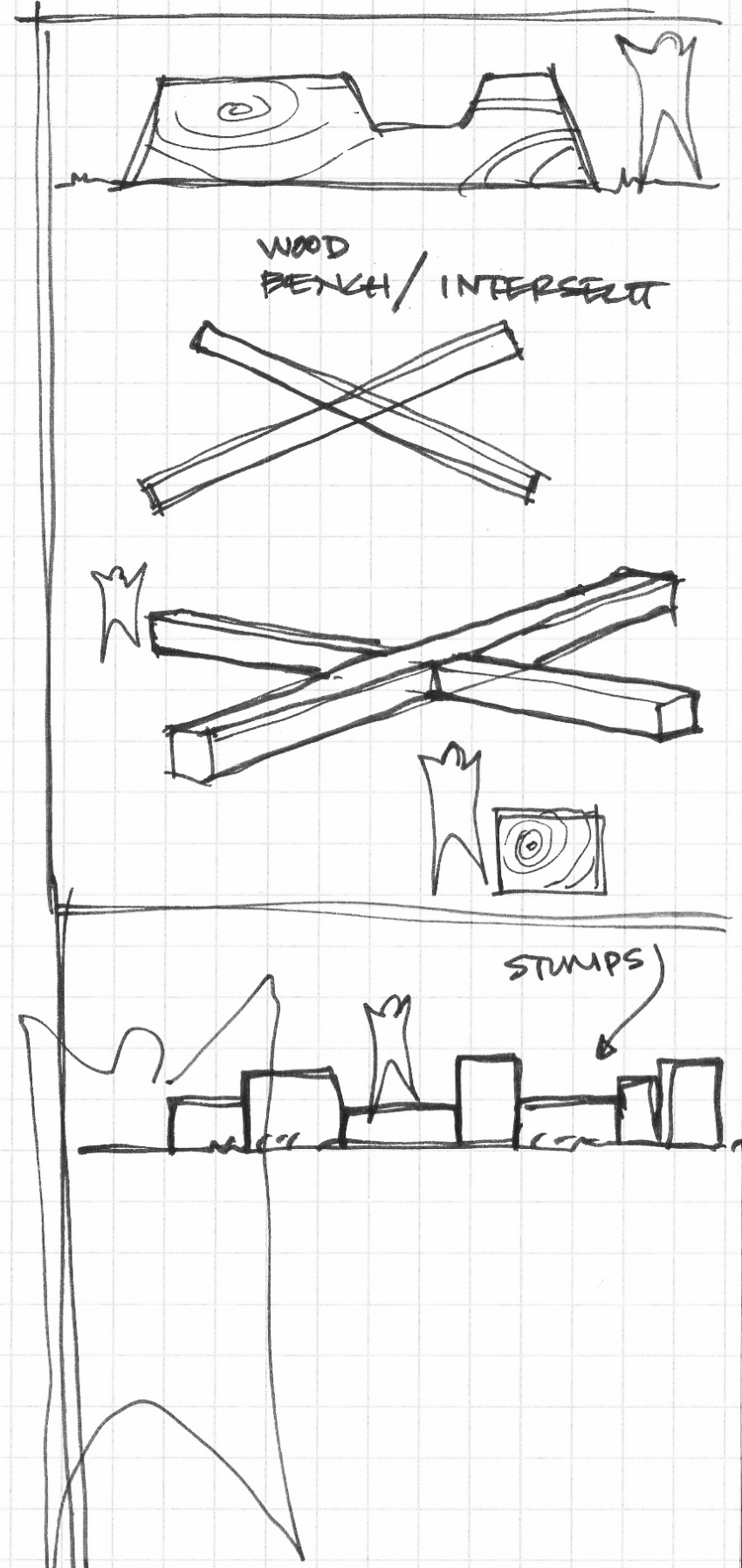


"NOBODY SIMPLY EXISTS IN CAMBRIDGE; EVERYBODY LIVES NEXT TO HIS NEIGHBOR AND CLOSE TO HIS FAMILY"

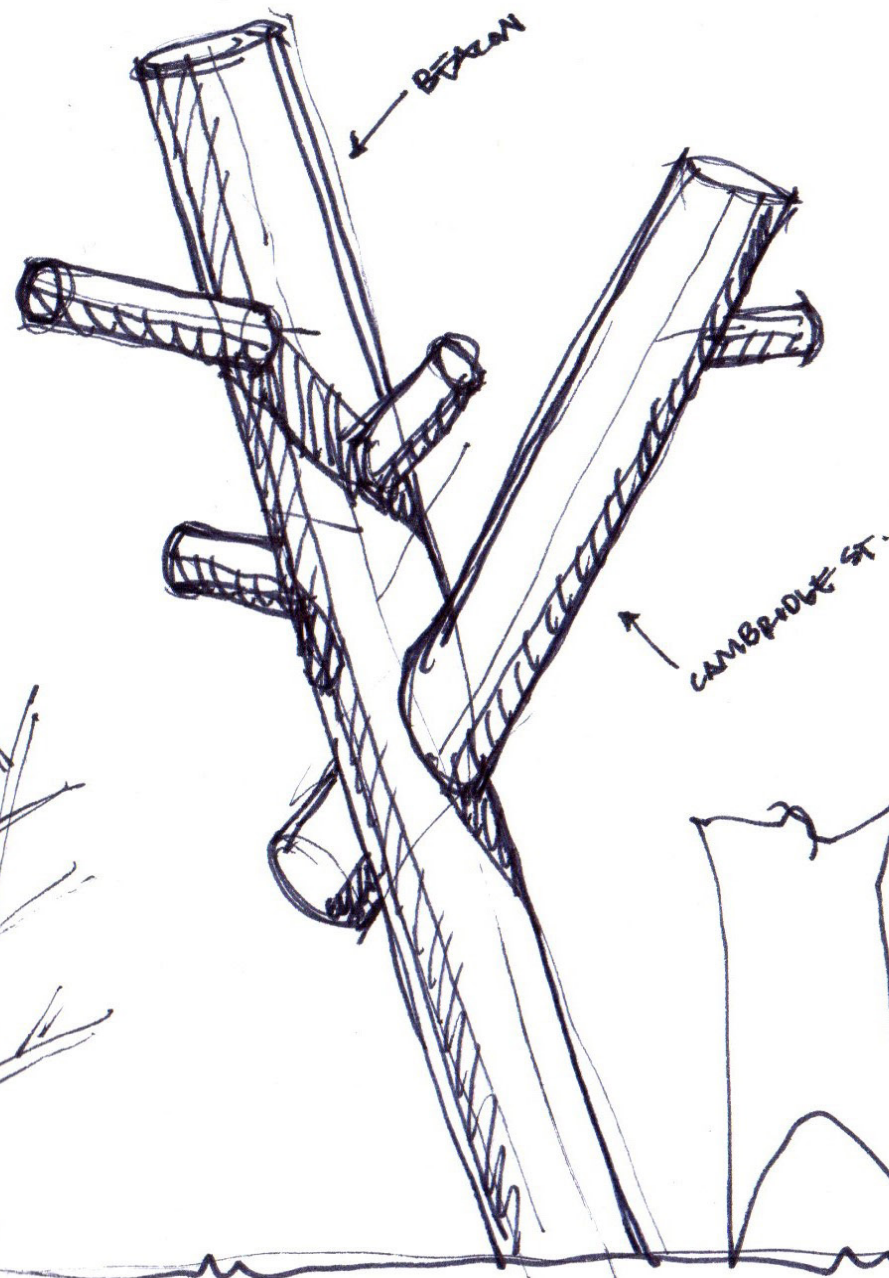
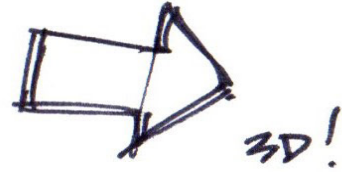
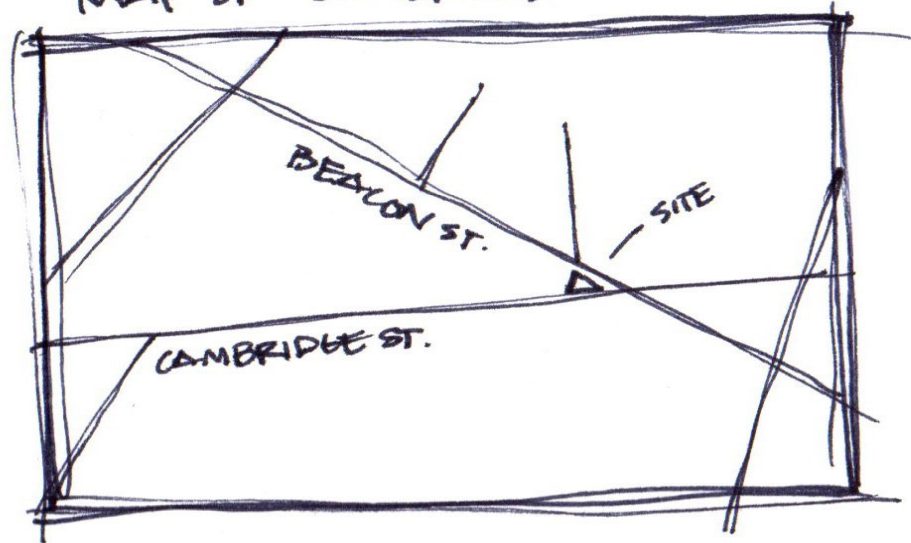
ELEVATE NATURE



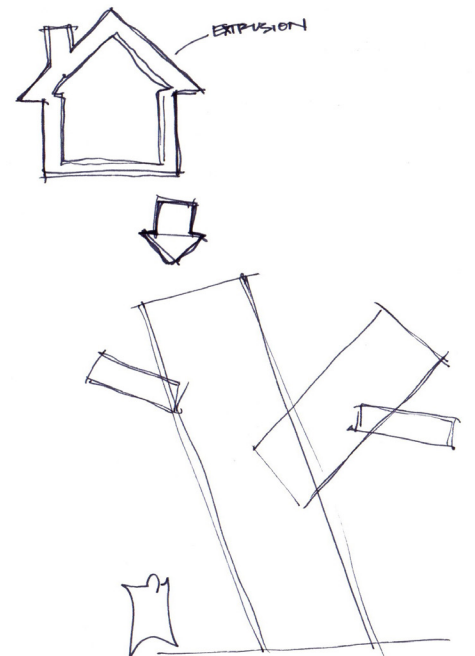
VICTORIAN BIRD HOUSE
ELEVATE COMMUNITY
(ACTUAL CAMBRIDGE HOUSE)



MAP OF CAMBRIDGE



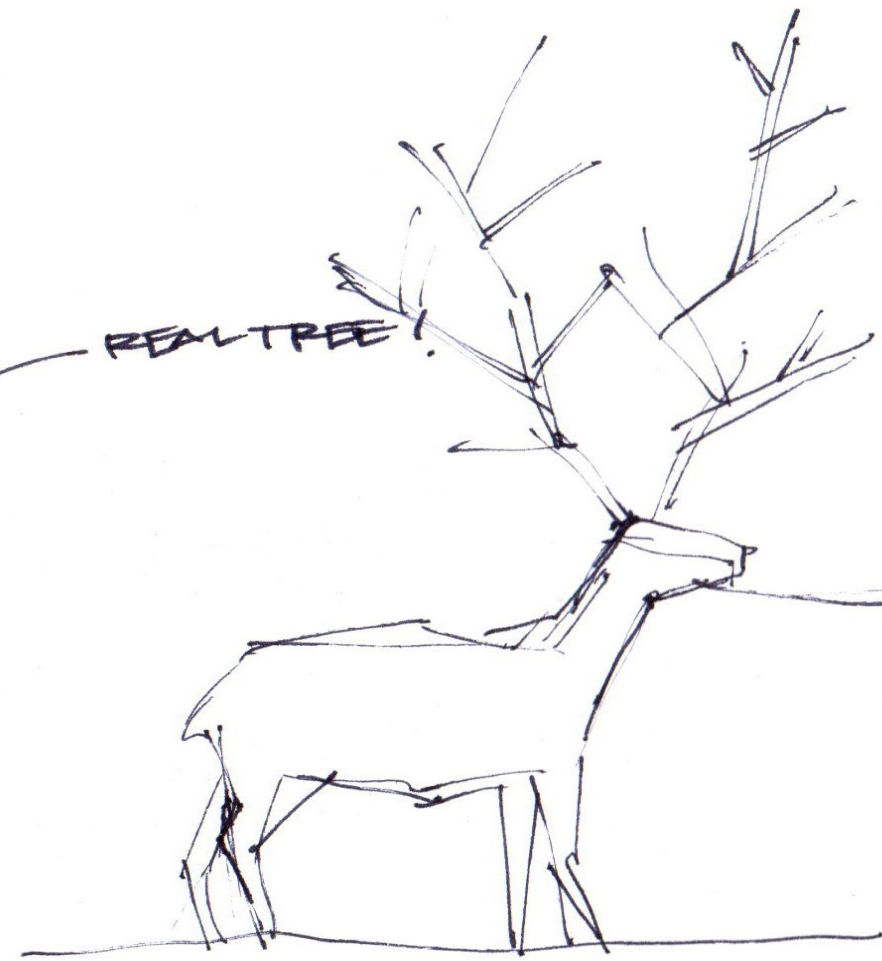
3D DIMENSIONALIZE MAPS
"INTERSECT @ WOOD"



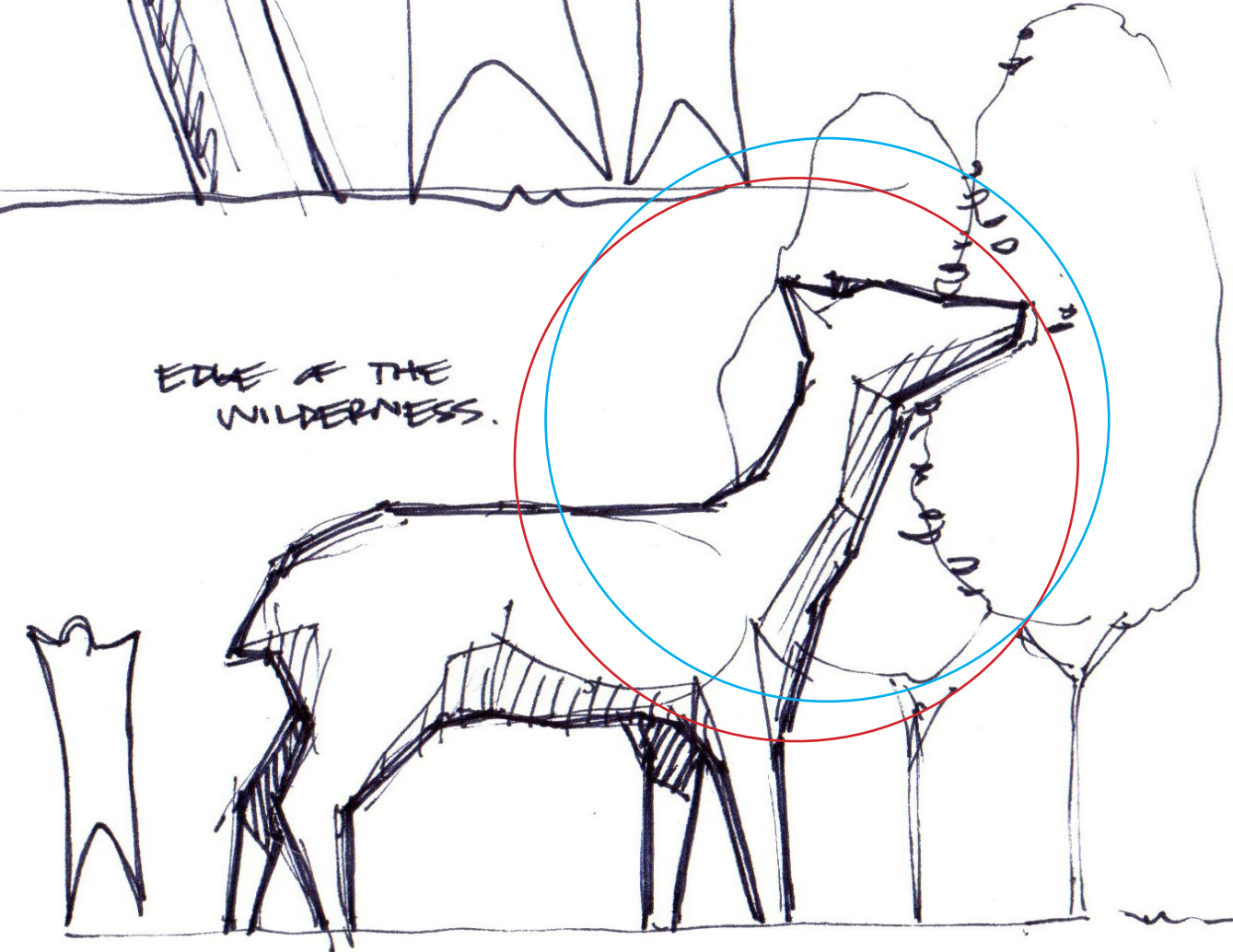
REAL TREE!



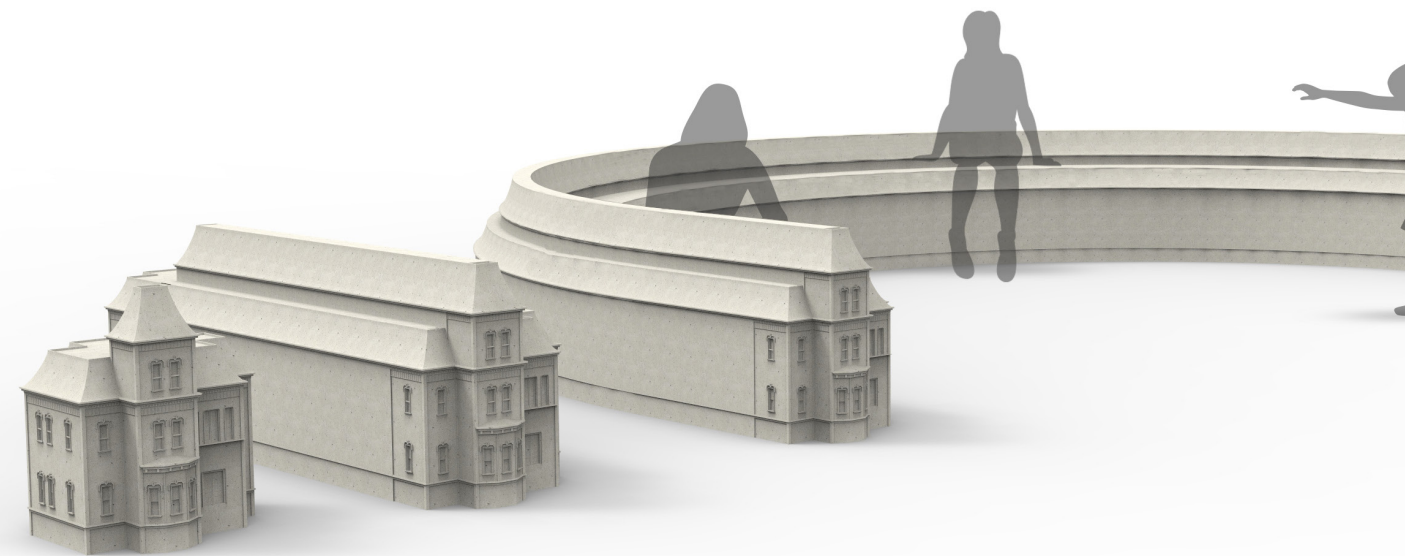
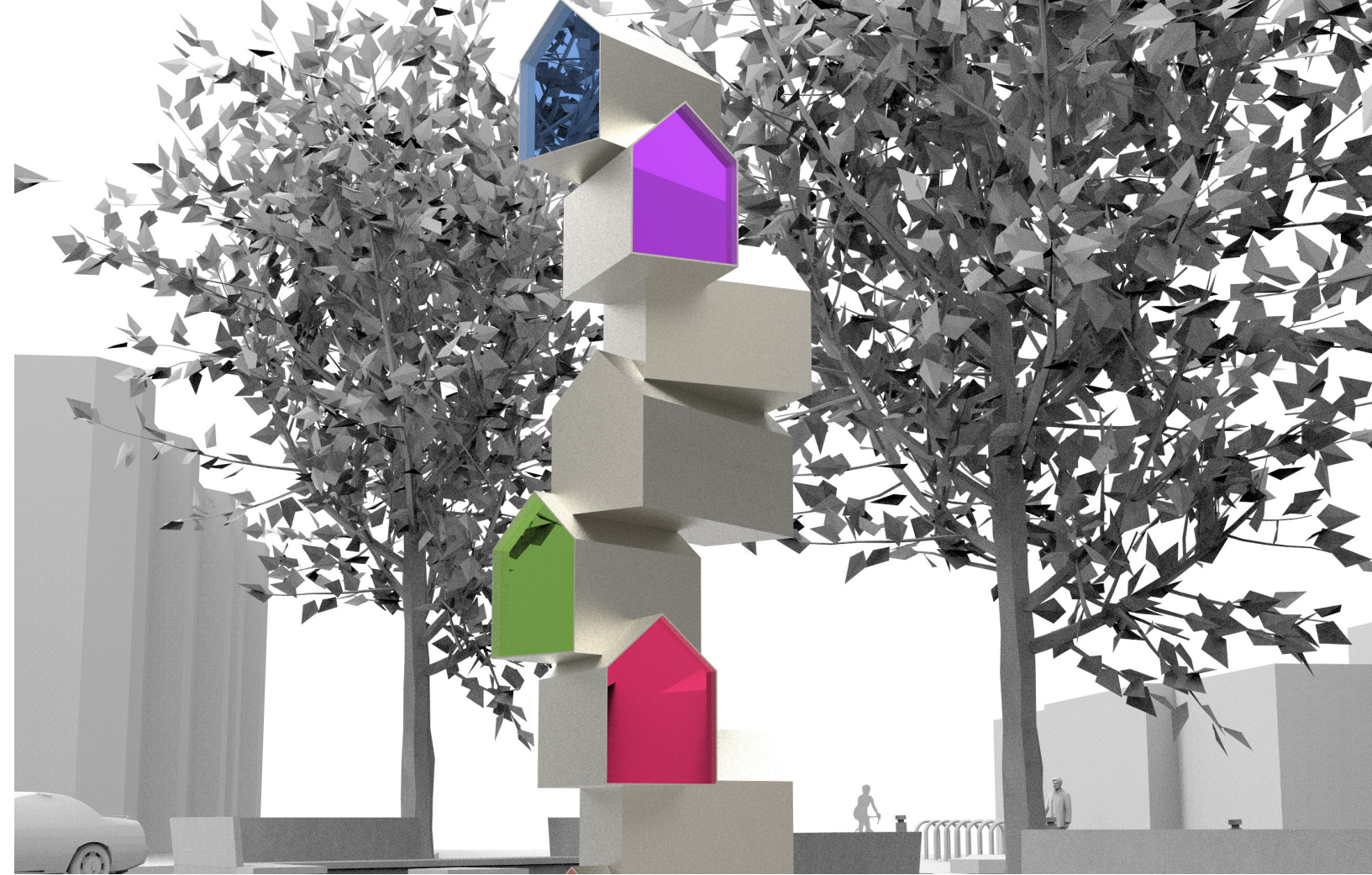
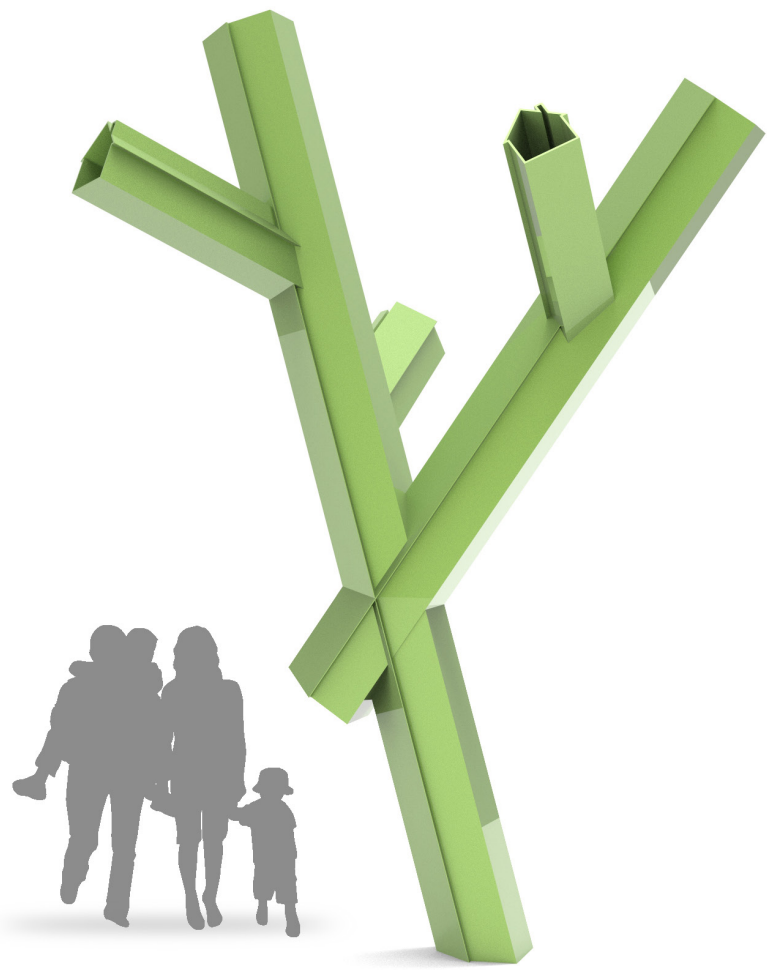
CONCRETE

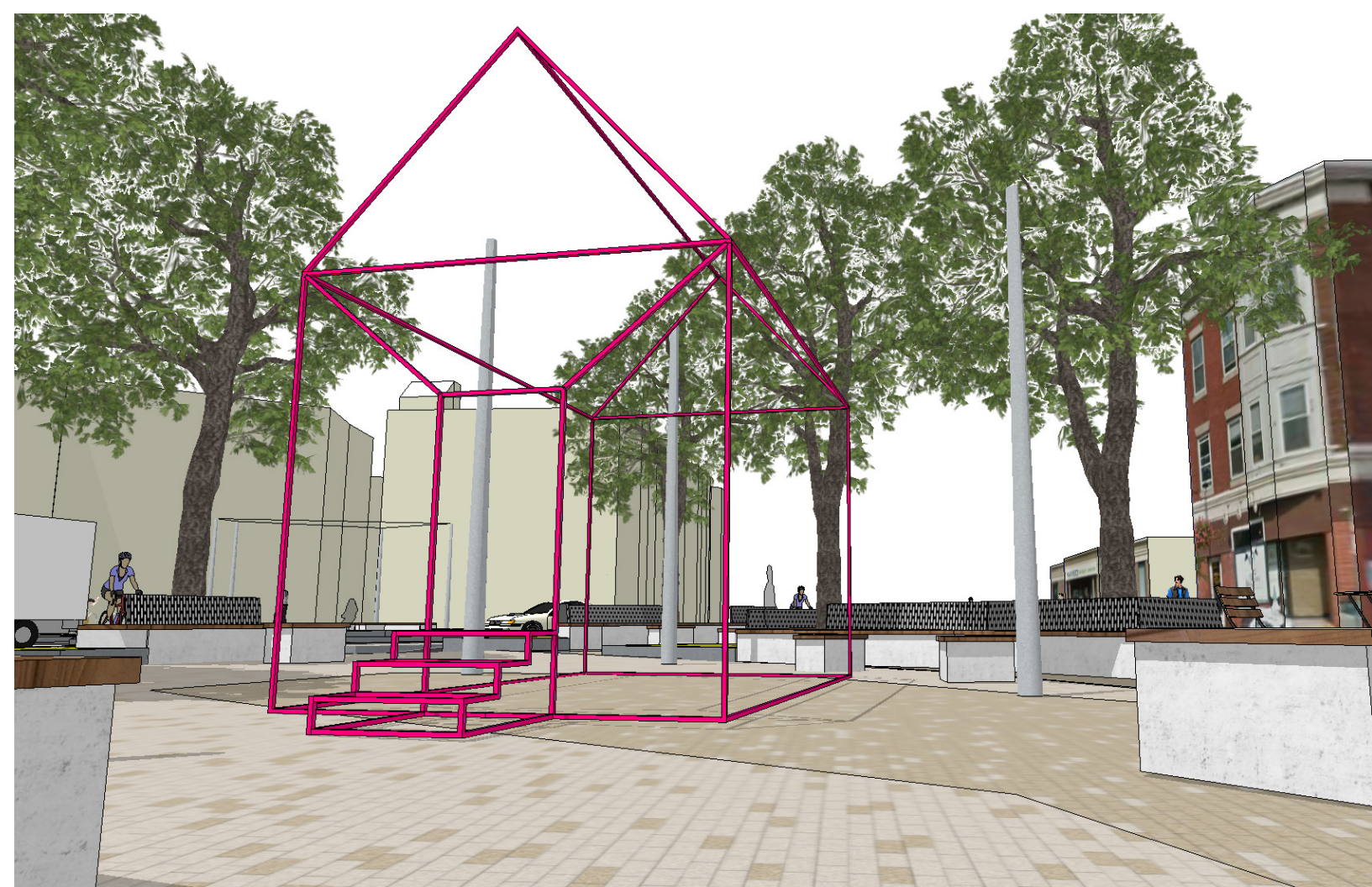
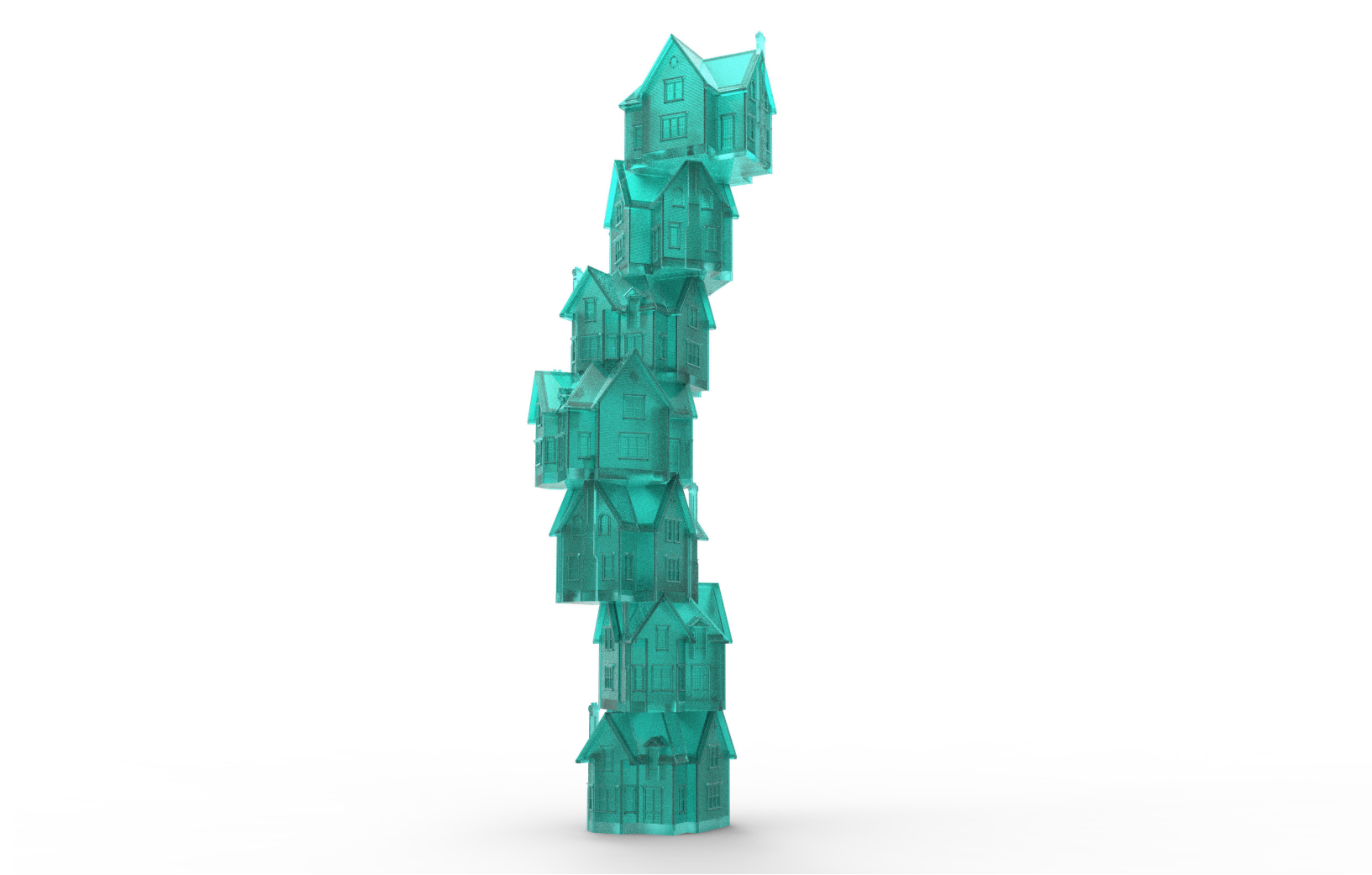


EDGE OF THE WILDERNESS.



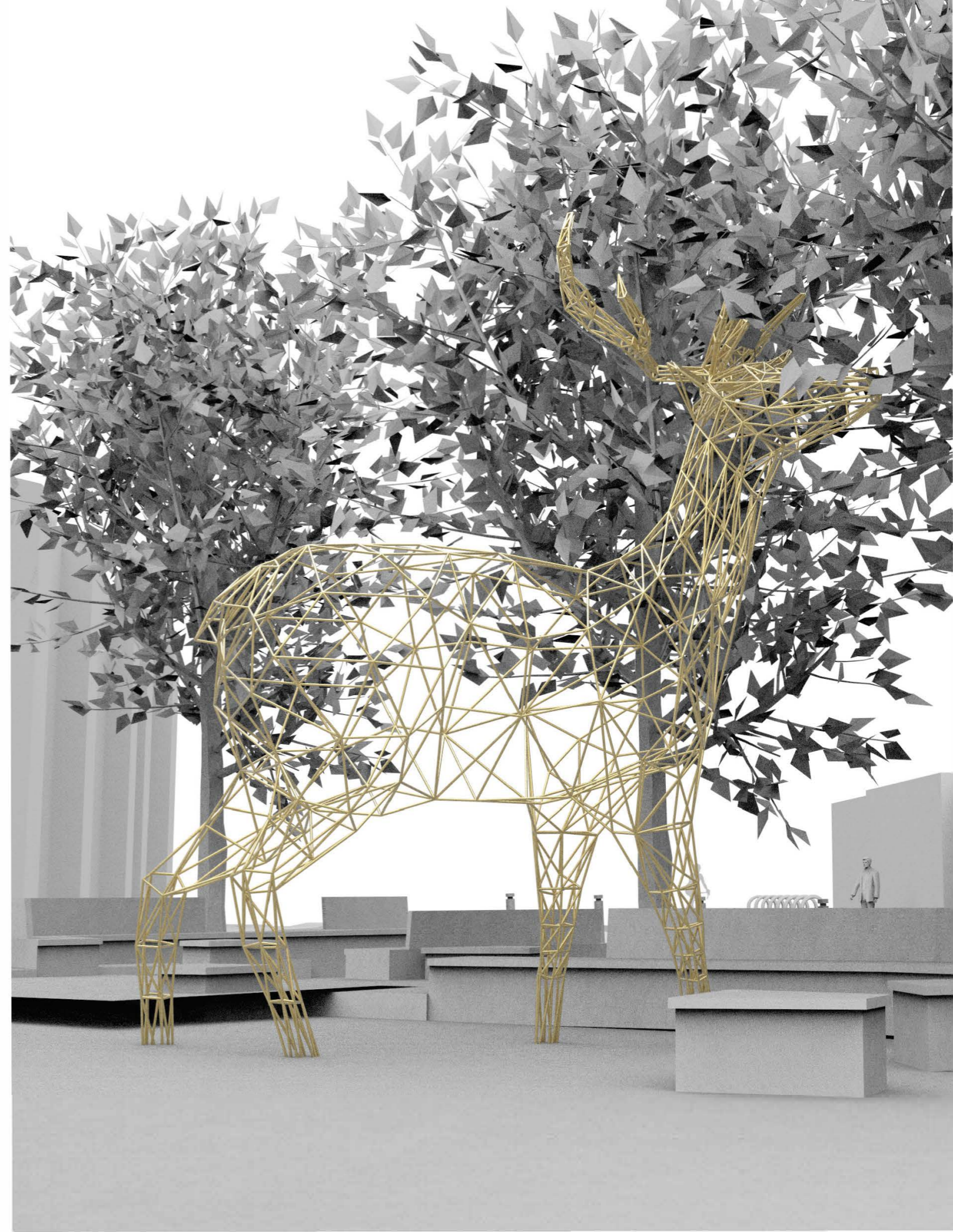
DEVELOPED SKETCHES





DEVELOPED CONCEPTS

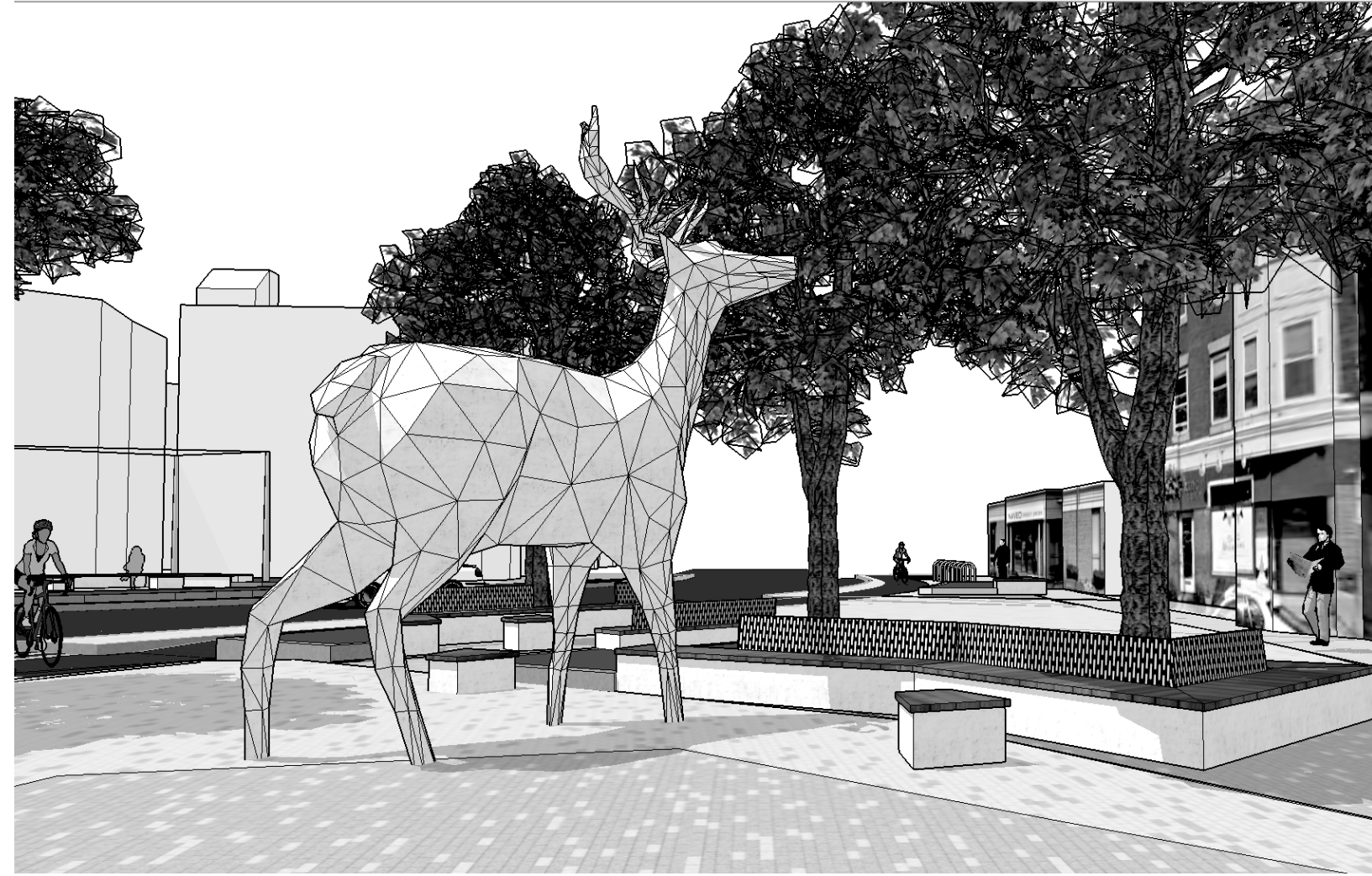
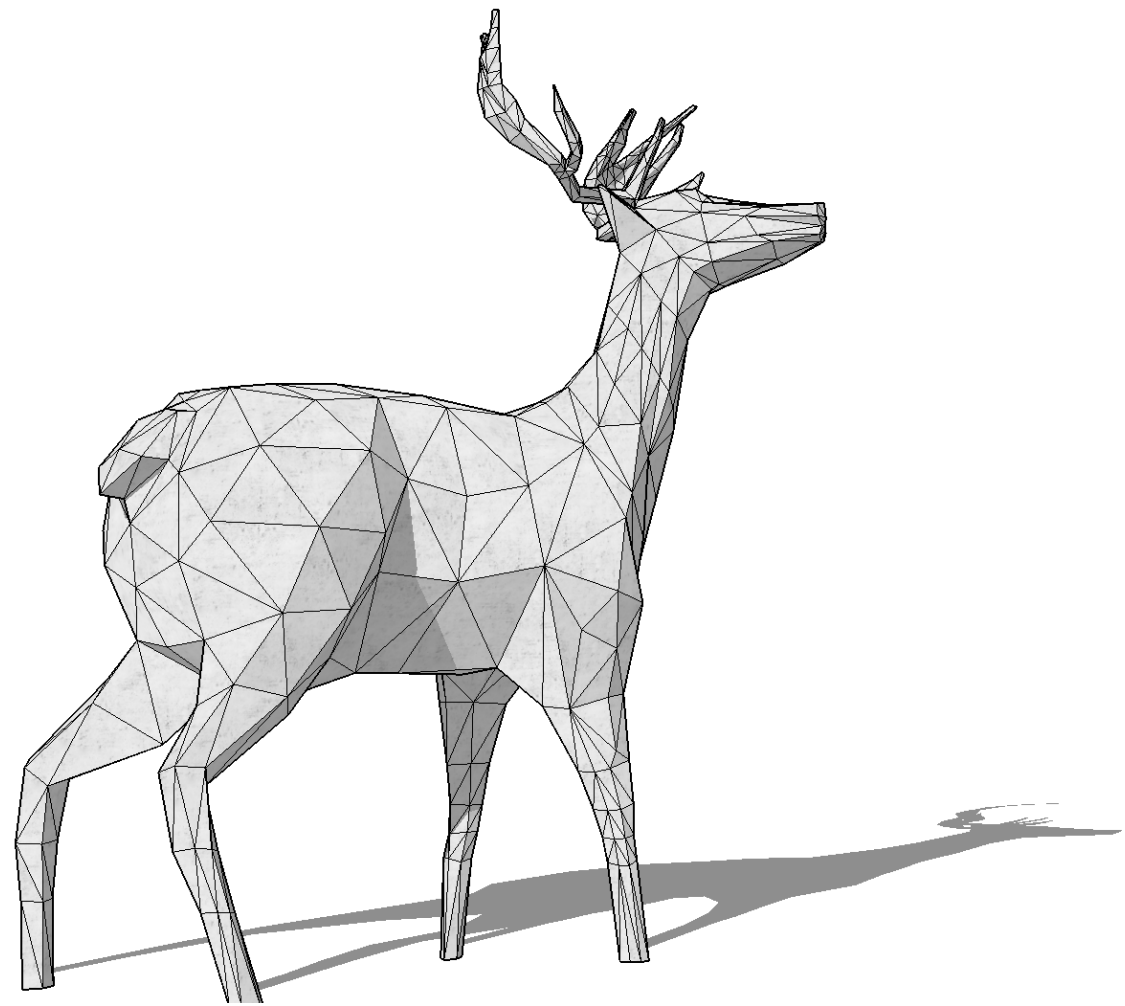
EDGE OF THE FOREST



EDGE OF THE FOREST



ARTWORK HEIGHT APPROXIMATELY: 10- 15'







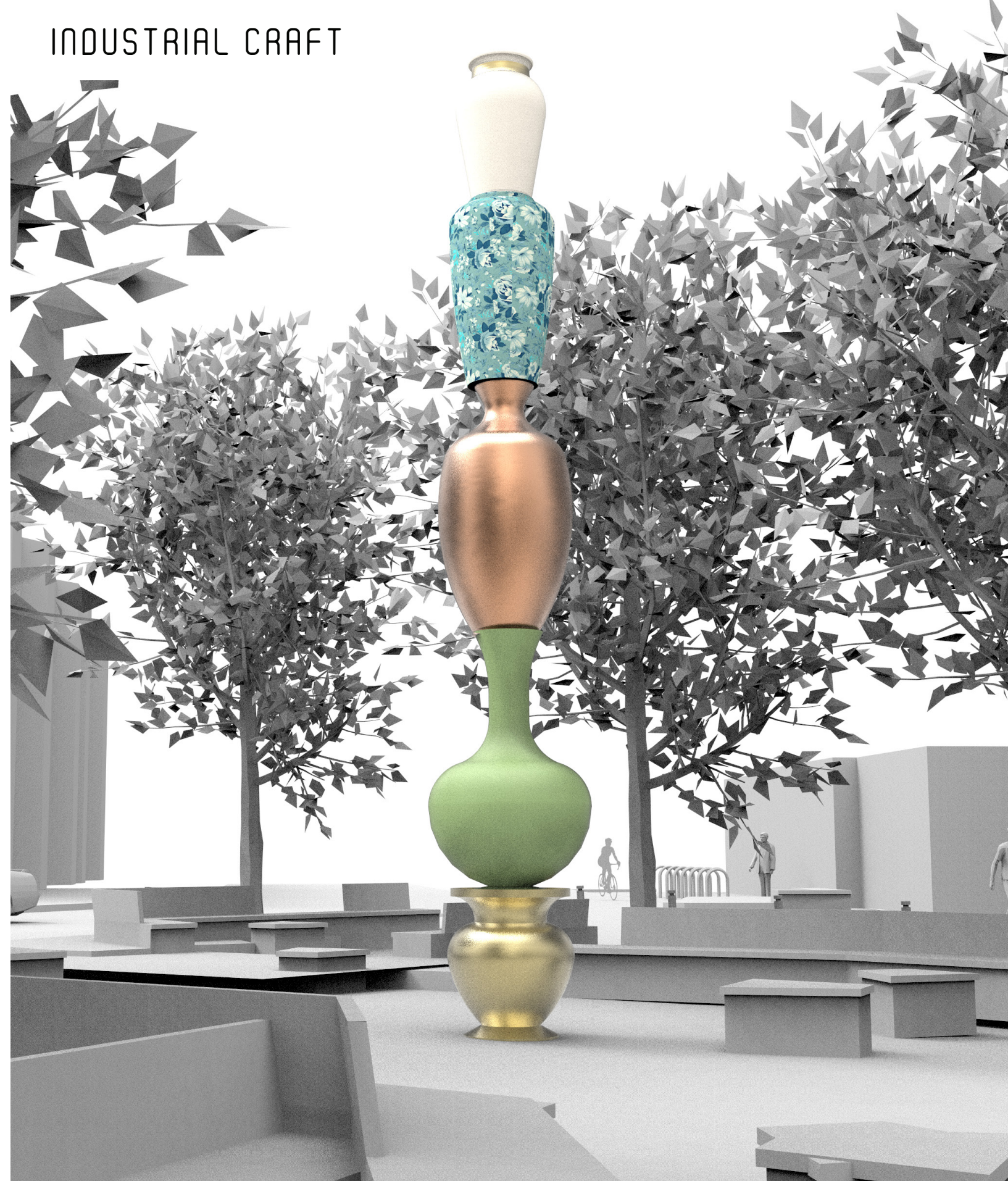




EDGE OF THE FOREST

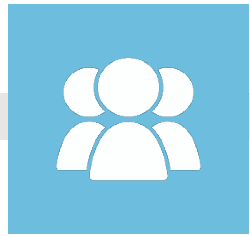


INDUSTRIAL CRAFT



Next Steps

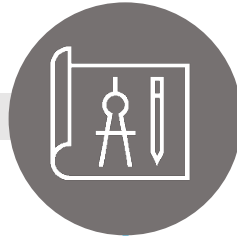
**Construction
Mitigation Planning
(Began September 2018
and ongoing)**



**Review Community
Feedback Received at
Community Meeting #6**



**Finalize Design and
Advertise for Bidding
Winter, 2018/2019**



**Eversource Gas
Main Upgrades
Winter, 2018/2019**



**Construction Kick-Off
Open House**



**Construction Start
Spring, 2019**



➡➡➡ Group Feedback

BREAKOUT TO LEARN MORE, VIEW AND DISCUSS:

- Landscape (Trees, Plants, etc.)
- Urban Design (Seating, Pavers, Lighting, Furniture)
- Public Art Concepts
- Other Project Elements

CONTACT INFORMATION:

kriley@cambridgema.gov

www.cambridgema.gov/theworks/inmansquare

