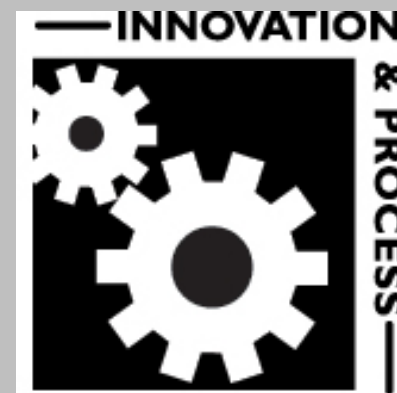
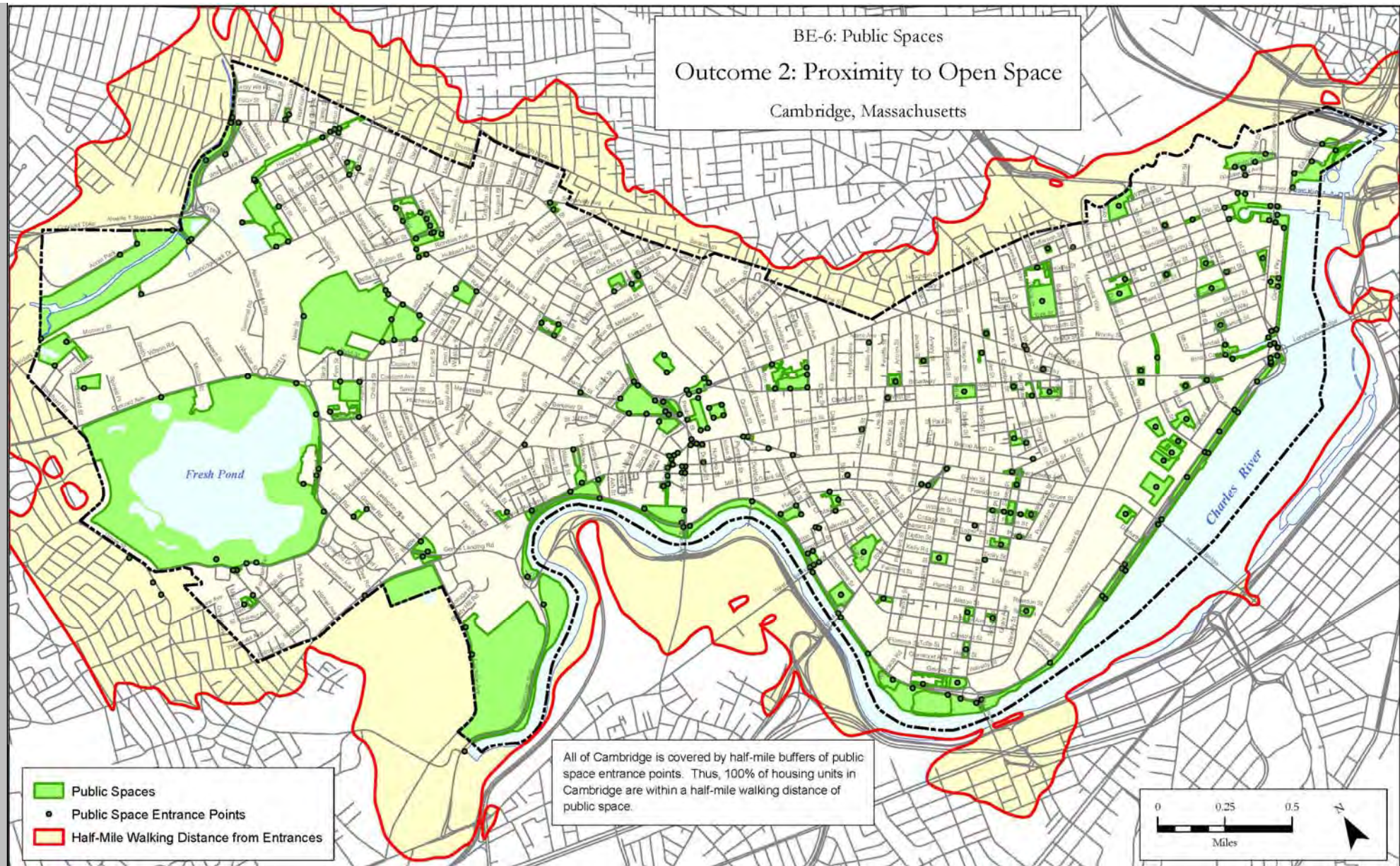


# Cambridge STAR Inventory: MAPS



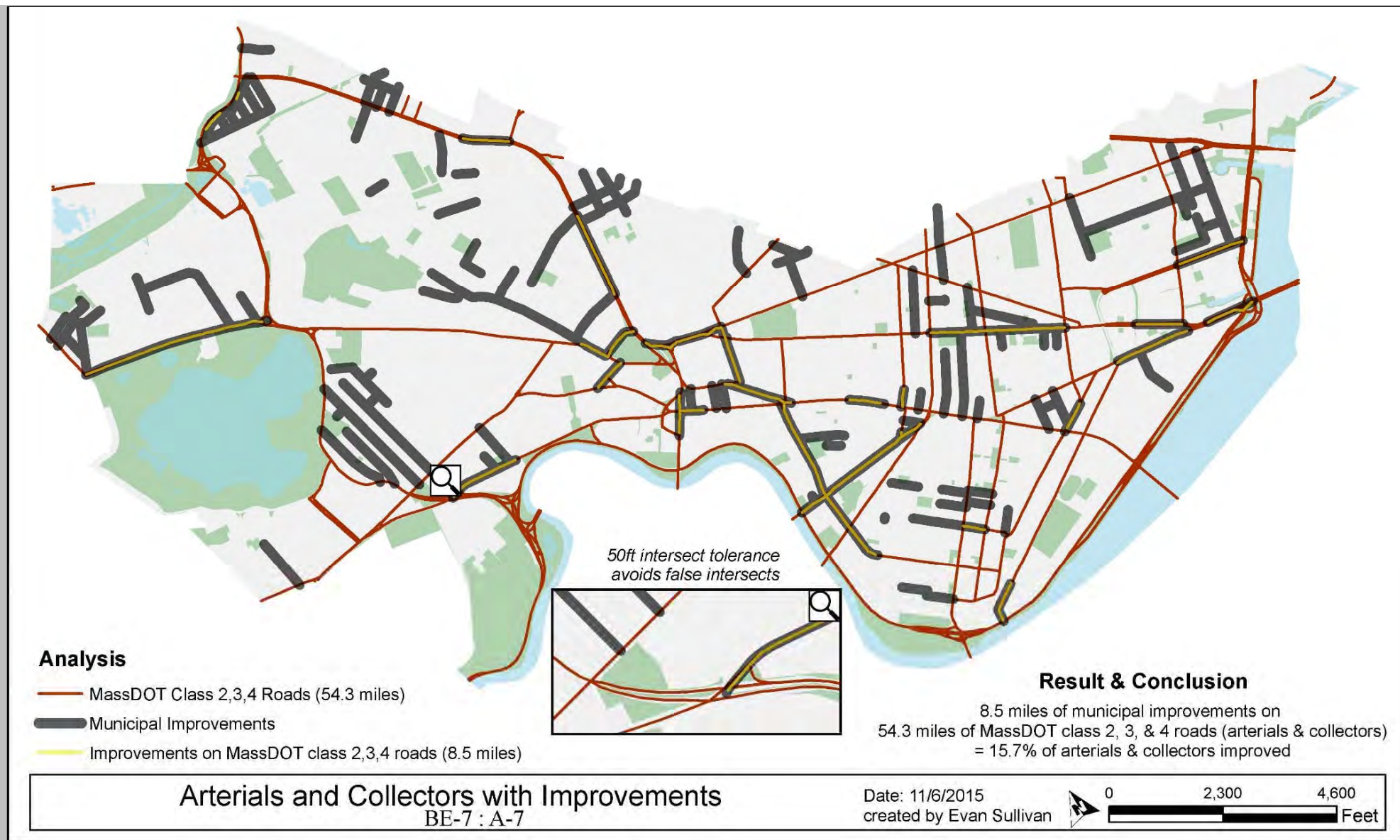


**Proximity to Open Space:**  
Determined planning and robust investment has resulted in 100% of all Cambridge residents living within a ¼ mile walk to the entrance of public open space or parkland, far exceeding the STAR standard of 85% for high-density cities.



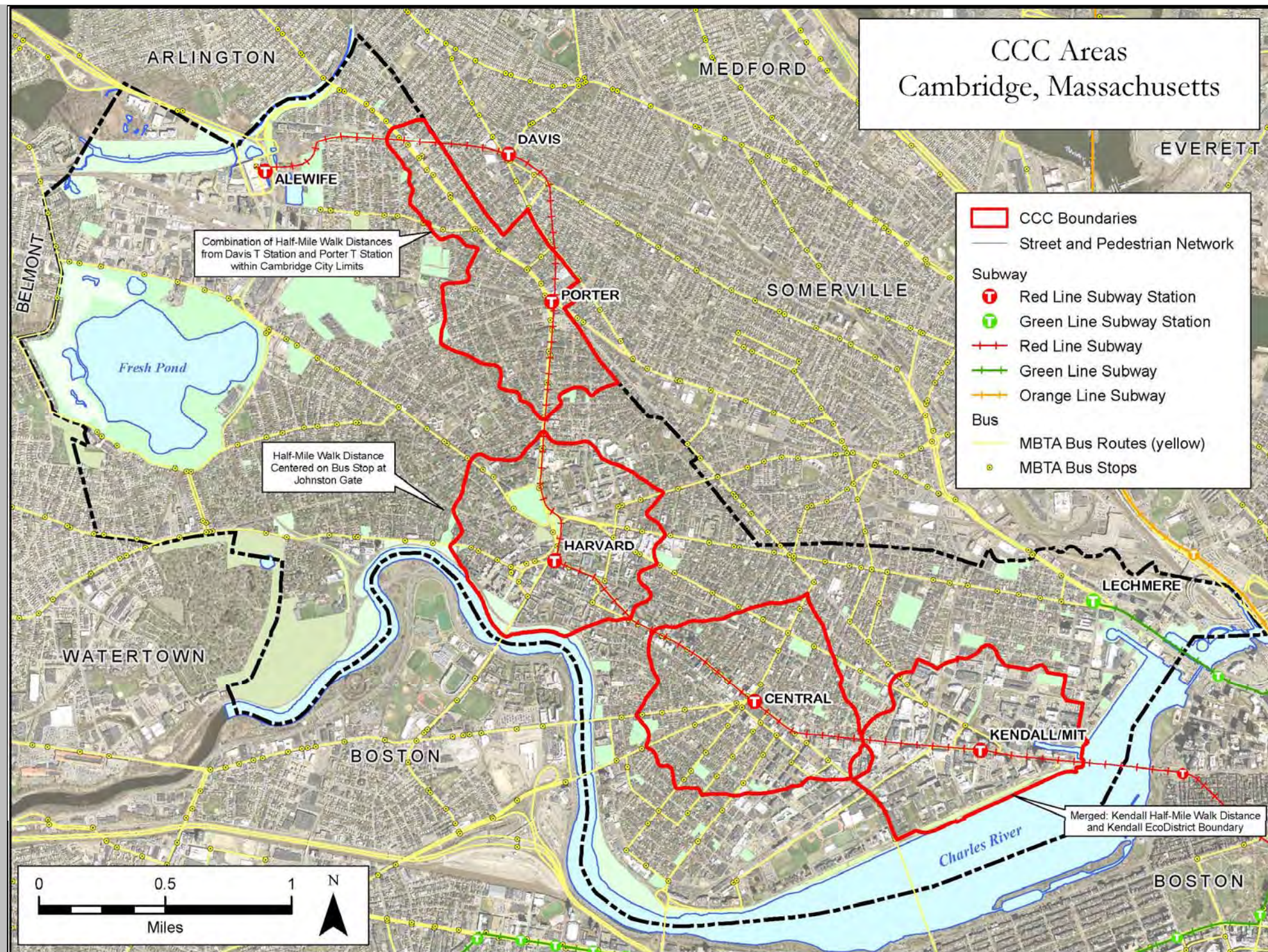


An essential component of providing transportation choices and alternatives is creating, maintaining and enhancing and supporting infrastructure. A central goal of Cambridge's Complete Streets plan is **expanding and improving the city's sidewalks** to increase connectivity and accessibility, thereby making the city a more welcoming place for pedestrians.





**Compact & Complete Communities** are walkable ½-mile areas around a central point that represent the community's strongest mix of uses, transit availability, density, and walkability while maintaining geographic diversity.

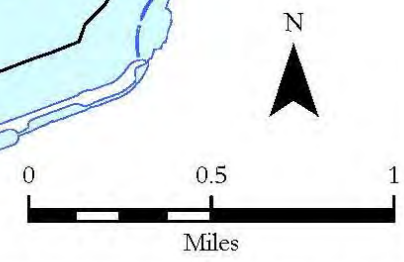
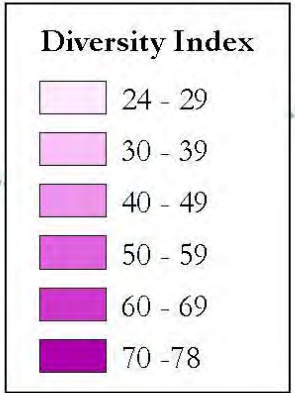
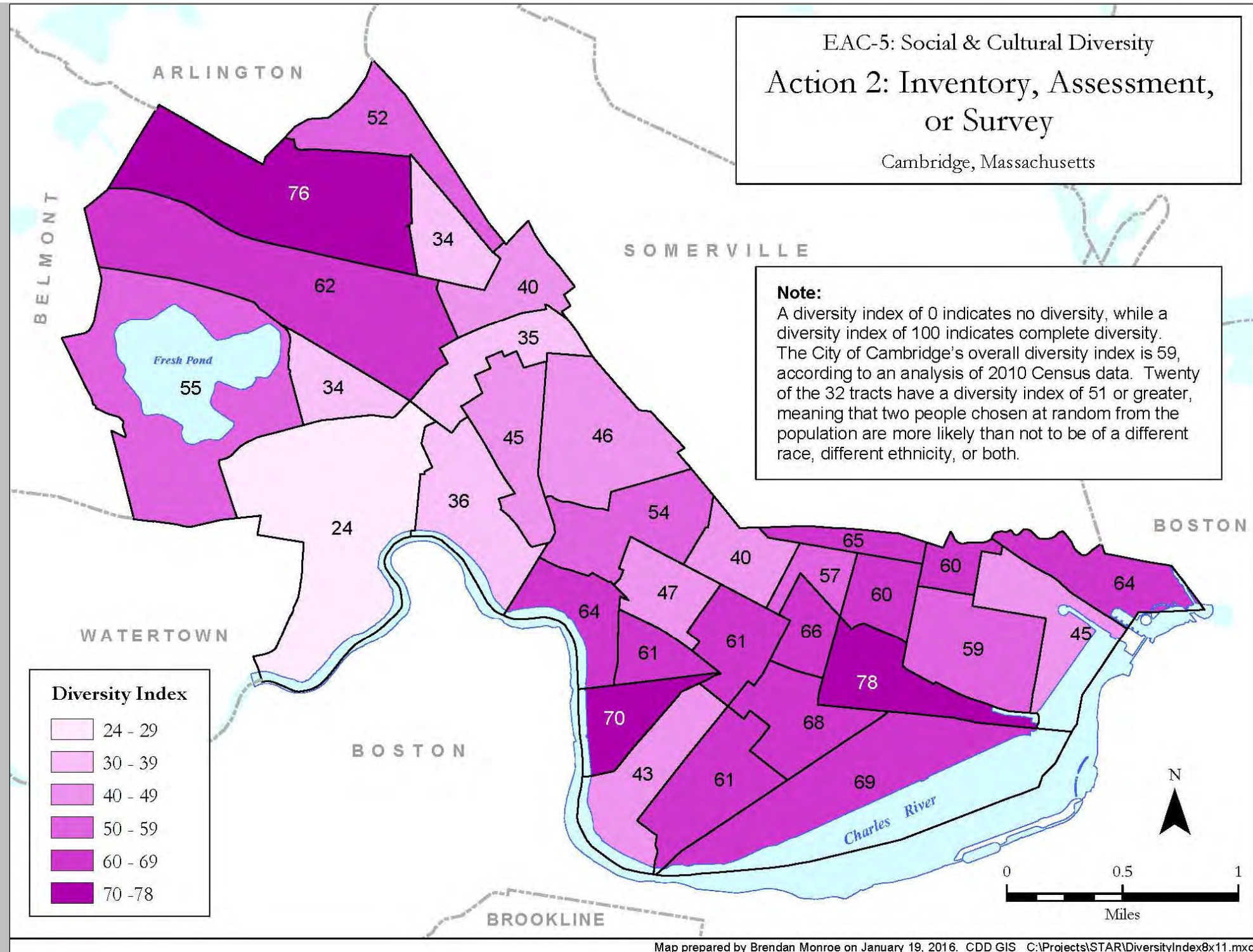




The Diversity Index is used to analyze the effectiveness of policies, programs, service delivery, and infrastructure investments

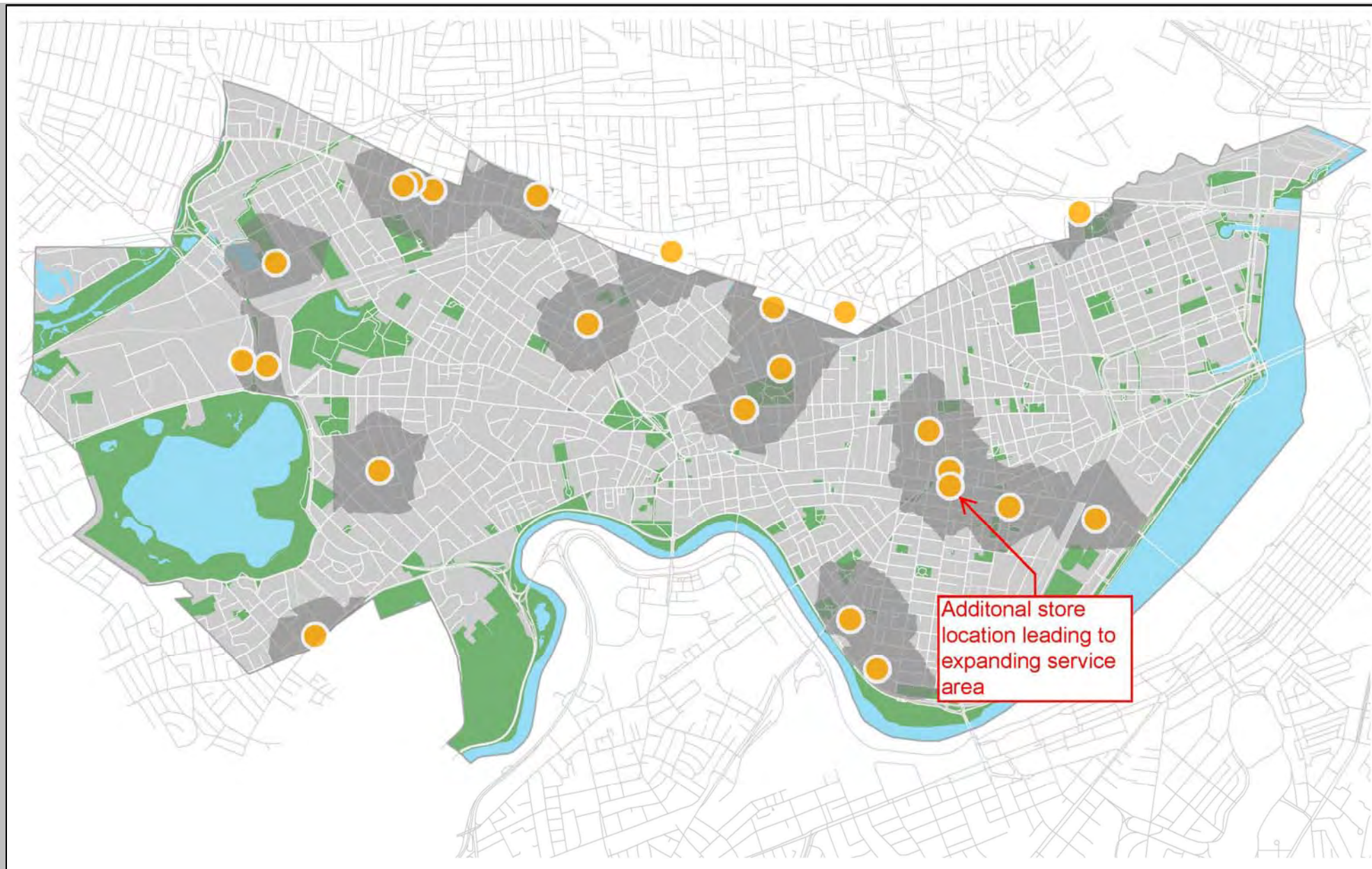
EAC-5: Social & Cultural Diversity  
 Action 2: Inventory, Assessment, or Survey  
 Cambridge, Massachusetts

**Note:**  
 A diversity index of 0 indicates no diversity, while a diversity index of 100 indicates complete diversity. The City of Cambridge's overall diversity index is 59, according to an analysis of 2010 Census data. Twenty of the 32 tracts have a diversity index of 51 or greater, meaning that two people chosen at random from the population are more likely than not to be of a different race, different ethnicity, or both.





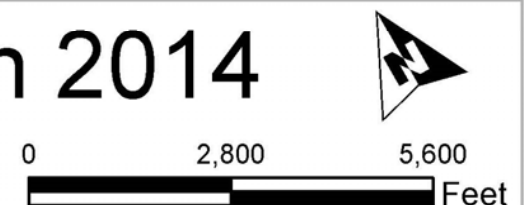
Cambridge residents with walkable access to **Healthy Food Options** increased by 10% from 2011 to 2014. Healthy Food Options mean retail outlets with a diverse offering of produce, dairy and other fresh and healthful foods.



# Access to Healthful Food in 2014

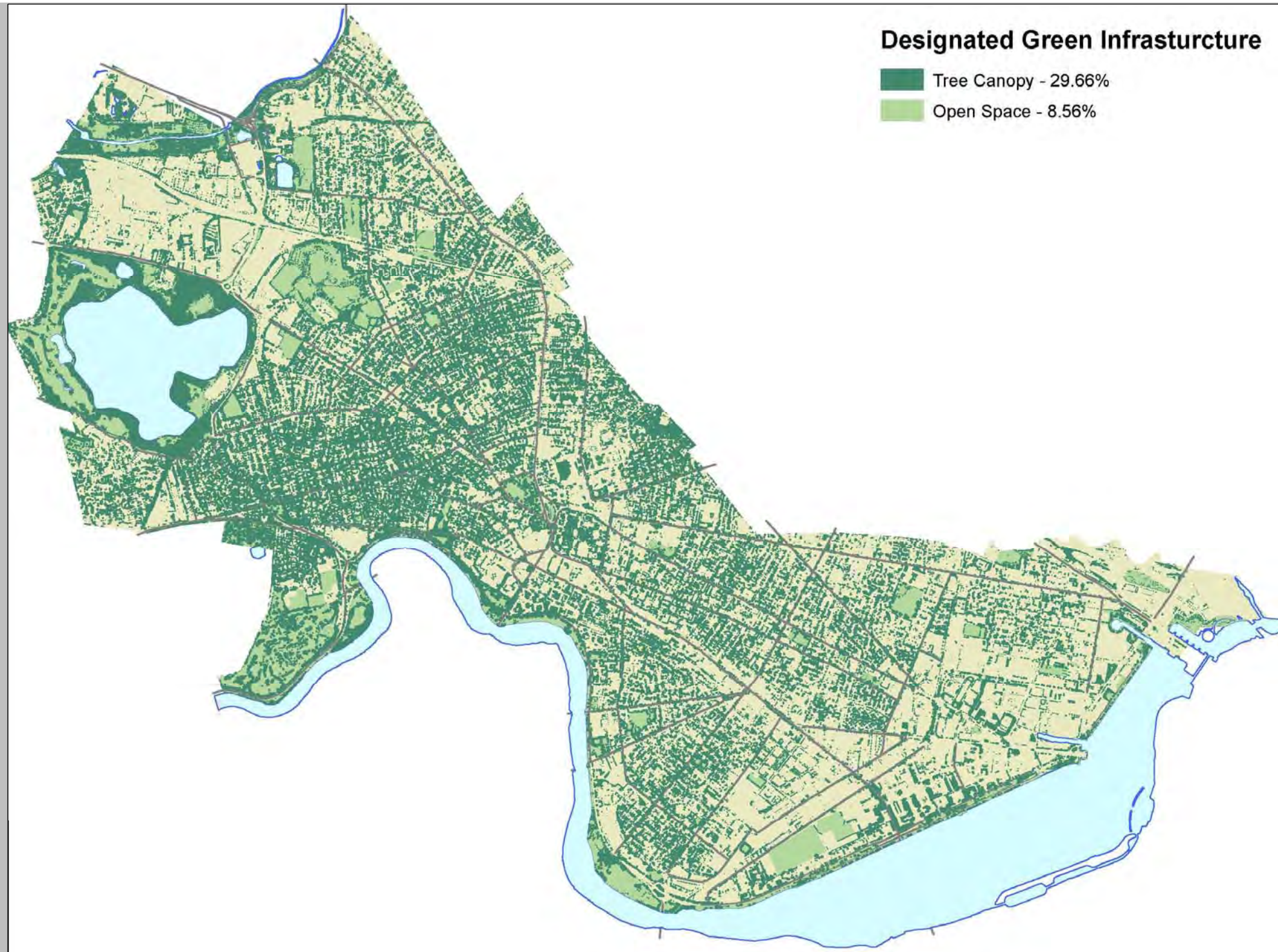
Date: 11/2/2015  
Prepared by Erin Coutts & Evan Sullivan  
Data: City of Cambridge & U.S. Census Bureau

HS-4 Outcome 3

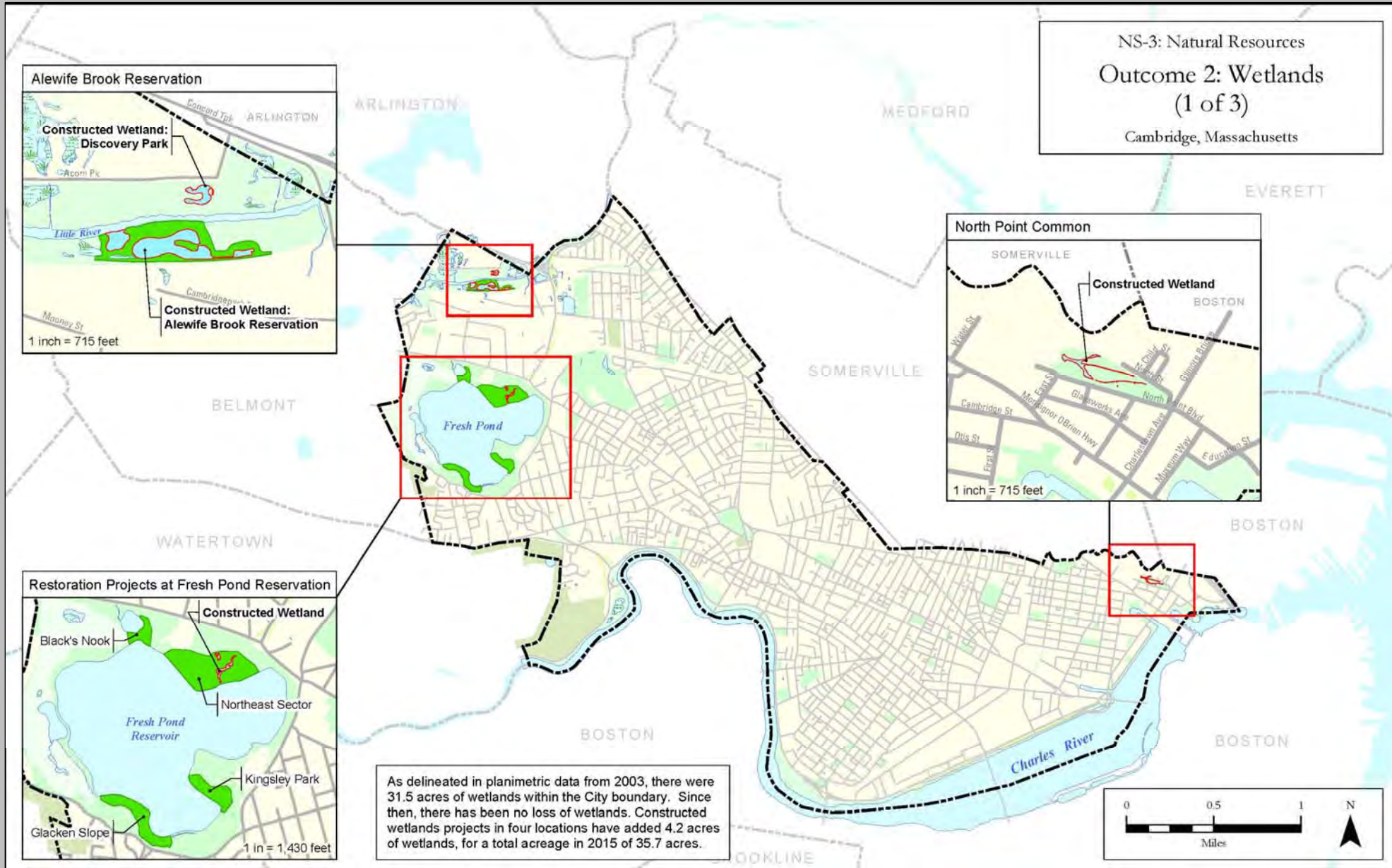




**Green Infrastructure** is the network of protected vegetated surfaces and tree canopy in a community that serves to mitigate heat, help manage water in the community and provide recreational opportunities for residents. Cambridge exceeded the STAR standard of 35% coverage, with over 38% of the city's surface area being covered by some form of green infrastructure.







Cambridge excels at **Natural Resource Protection**. Since 2003 the city has protected or restored all existing wetlands, and has even increased wetland areas by over four acres with constructed wetland projects at North Point, Discovery Park, Alewife Brook and Fresh Pond Reservation.